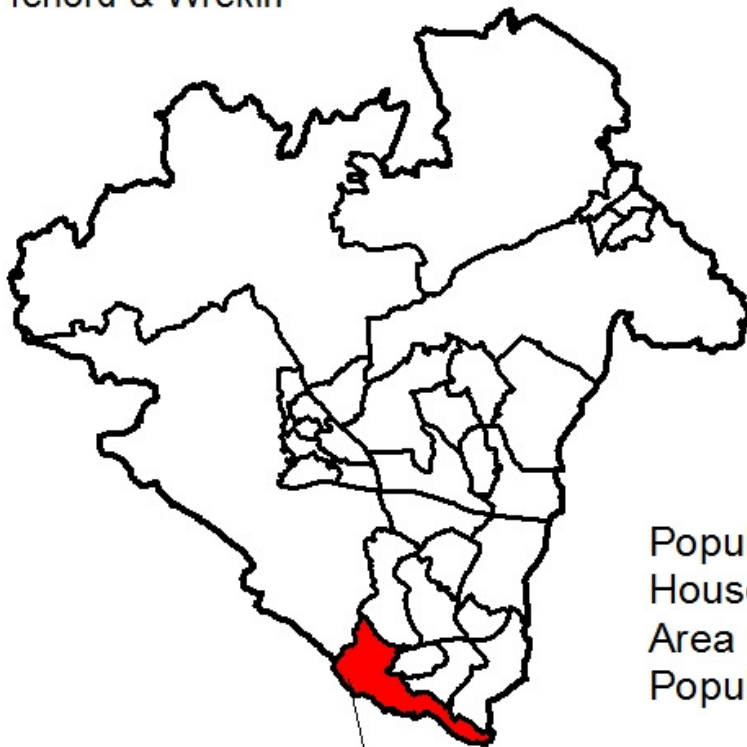
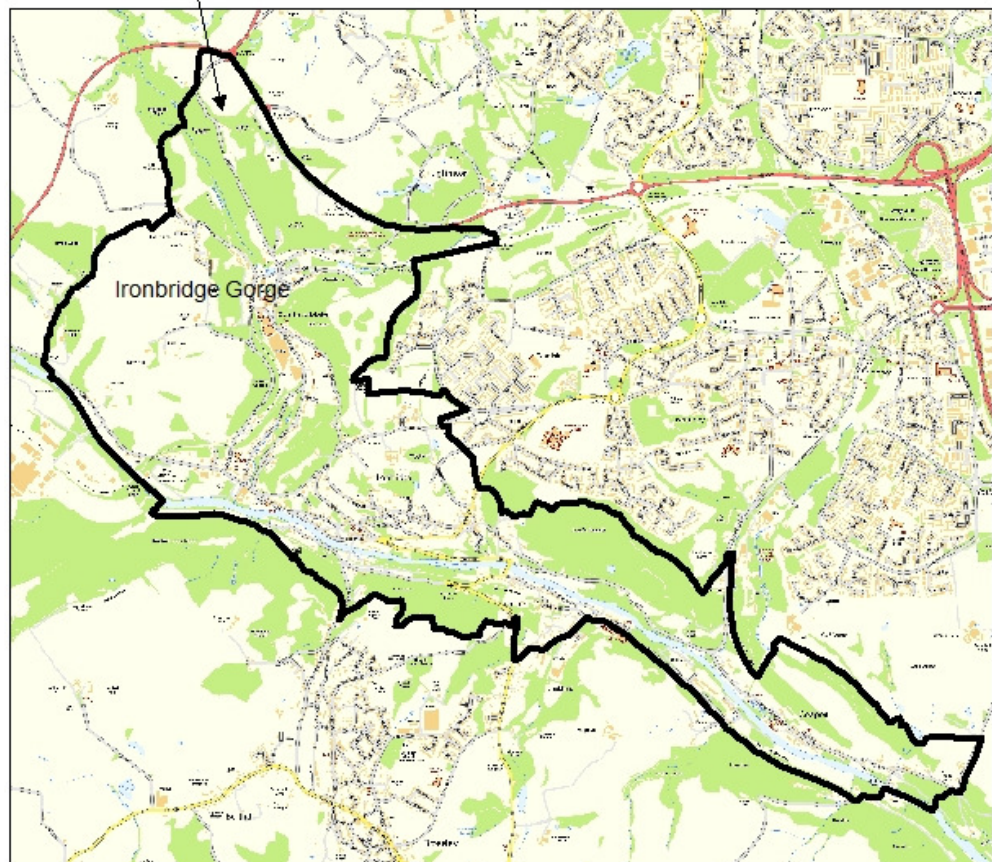


Ironbridge Gorge – 2011 Census Profile

Telford & Wrekin



Population: 2,582
Households: 1,135
Area (hectares): 575.5
Population Density: 4.5



©Crown copyright. All rights reserved. Borough of Telford & Wrekin Licence No. 100019694. Date. 2013

Ironbridge Gorge – 2011 Census Profile

1 Population Characteristics

Summary:

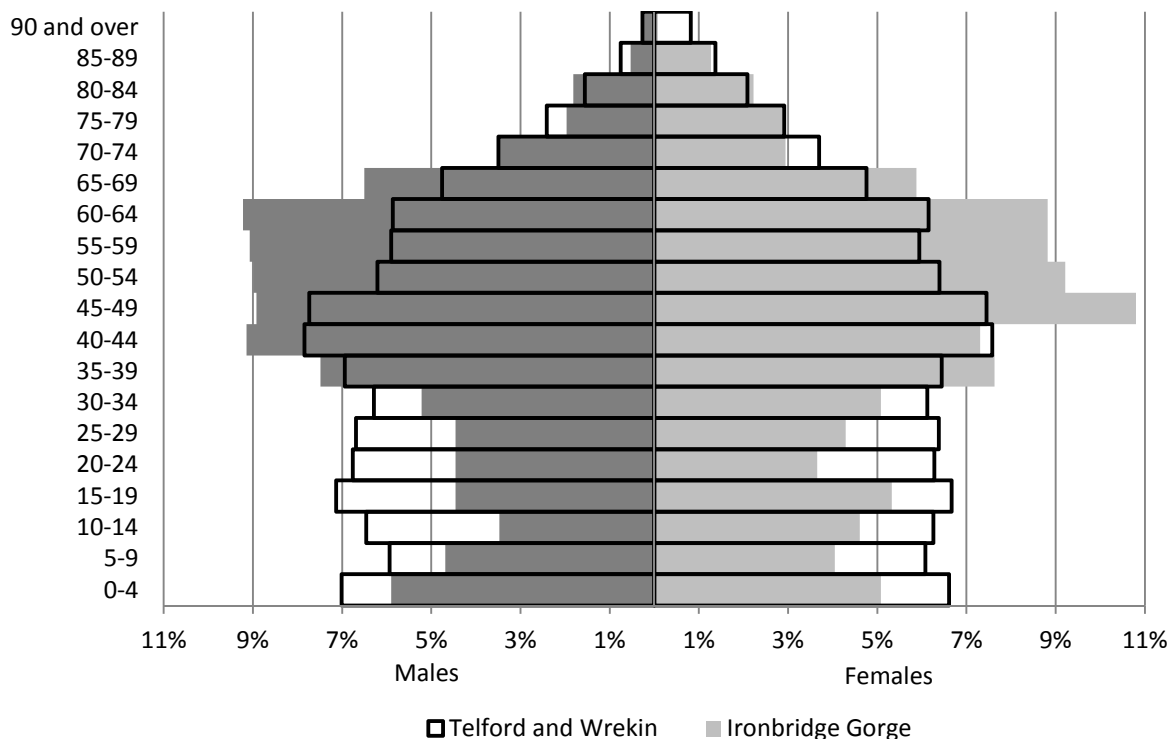
- Ironbridge Gorge’s population increased by 7.4% between 2001 and 2011.
- In the ten years prior to the 2011 Census, the 0-15 age group increased by 2.5%, with those aged 16-24 decreasing slightly from 8.6% to 8.4%.
- The 25-44 cohort decreased by 12.8%, with the population aged 45 and over increasing; 45-64 by 21.9% and 65+ by 27.5%.
- Ironbridge Gorge’s population is dominated by the 40-64 age group, with higher proportions than Borough wide.

Table 1: Age structure

	Ironbridge Gorge				Telford and Wrekin 2011 %
	2011		2001		
	People	%	People	%	
0-4	142	5.5%	100	4.2%	6.8%
5-9	113	4.4%	118	4.9%	6.0%
10-15	118	4.6%	146	6.1%	7.7%
16-24	217	8.4%	206	8.6%	12.1%
25-44	654	25.3%	750	31.2%	27.1%
45-64	953	36.9%	782	32.5%	25.8%
65-84	358	13.9%	283	11.8%	12.8%
85+	27	1.0%	19	0.8%	1.6%
<i>All usual residents</i>	<i>2,582</i>	<i>100.0%</i>	<i>2,404</i>	<i>100.0%</i>	<i>100.0%</i>

Source: Office for National Statistics 2001 and 2011 Census (KS102)

Figure 1: Population pyramid



Source: Office for National Statistics 2011 Census (PP05 and PP06)

Ironbridge Gorge – 2011 Census Profile

2 Diversity

Summary:

- The BME population of Ironbridge Gorge grew by 46.9% between 2001 and 2011, accounting for 4.7% of the ward's total population, less than half the Borough-wide (10.6%).
- The 'Other White' population increased by half and at 3.1%, just below the Borough figure, remains the largest BME group in the ward.
- The 2011 Census reported a decrease in the number of Christian's within Ironbridge Gorge from 68.4% to 58.5%, lower than the Borough (61.7%). Nearly one third of residents have no religion, an increase from 21.3% to 32.0%, above the Borough rate of 27.4%.
- For the first time in a census, people were asked for their main language. Out of the 1.5% of the population whose main language is not English, only very few people can not speak English well or can not speak English at all.

Table 2: Ethnic background

	Ironbridge Gorge				Telford and Wrekin 2011 %
	2011		2001		
	People	%	People	%	
White British	2,460	95.3%	2,326	96.6%	89.5%
Other White	79	3.1%	51	2.1%	3.2%
Mixed/multiple	25	1.0%	12	0.5%	1.8%
Asian/Asian British	14	0.5%	17	0.7%	4.2%
Black/African/Caribbean/Black British	4	0.2%	3	0.1%	1.1%
Other ethnic group	0	0.0%	0	0.0%	0.3%
All BME	122	4.7%	83	3.4%	10.6%
<i>All usual residents</i>	<i>2,582</i>	<i>100.0%</i>	<i>2,409</i>	<i>100.0%</i>	<i>100.0%</i>

Source: Office for National Statistics 2001 and 2011 Census (KS201)

Table 3: Religion

	Ironbridge Gorge				Telford and Wrekin 2011 %
	2011		2001		
	People	%	People	%	
Buddhist	8	0.3%	6	0.2%	0.2%
Christian	1,511	58.5%	1,652	68.4%	61.7%
Hindu	3	0.1%	3	0.1%	0.5%
Jewish	2	0.1%	0	0.0%	0.0%
Muslim	2	0.1%	5	0.2%	1.8%
Sikh	1	0.0%	9	0.4%	1.3%
Other religion	20	0.8%	10	0.4%	0.4%
No religion	825	32.0%	515	21.3%	27.4%
Religion not stated	210	8.1%	216	8.9%	6.6%
Total with religion	1,547	59.9%	1,686	69.8%	66.1%
<i>All usual residents</i>	<i>2,582</i>	<i>100.0%</i>	<i>2,416</i>	<i>100.0%</i>	<i>100.0%</i>

Source: Office for National Statistics 2001 Census (KS007) and 2011 Census (KS209)

Ironbridge Gorge – 2011 Census Profile

Table 4: English language proficiency

		Ironbridge Gorge		Telford and Wrekin
		2011		2011
		People	%	%
Main language is English		2,485	99.0%	95.9%
Main language is not English	Speaks English very well	15	0.6%	1.4%
	Speaks English well	7	0.3%	1.7%
	Does not speak English well	1	0.0%	0.9%
	Does not speak English at all	1	0.0%	0.2%
<i>All people aged 3 and over</i>		<i>2,509</i>	<i>100.0%</i>	<i>100.0%</i>

Source: Office for National Statistics 2011 Census (QS205)

3 Household and family characteristics

Summary:

- The 2011 Census found 1,135 occupied household spaces in Ironbridge Gorge accommodating 2,508 people, an average household size of 2.21.
- The proportion of married couple households with no children and cohabiting couple households with no children increased by 30.4% and 20.2% respectively, with higher proportions than Borough wide (13.8% and 5.7%).
- Some 7.3% of households do not have access to car, down from 11.5% in 2001. The average number of cars per households is 1.63 compared to 1.27 Borough wide.
- Some 45.5% of households in Ironbridge Gorge are deprived in at least one dimension, a decrease from 56.2%, below the Borough (58.3%).

Table 5: Household structure

		Ironbridge Gorge				Telford and Wrekin	
		2011		2001		2011	
		H Holds	%	H Holds	%	%	
One person	Aged 65 and over	104	9.2%	103	9.7%	10.7%	
	Other	217	19.1%	211	19.9%	14.5%	
One family and no others	All aged 65 and over		74	6.5%	69	6.5%	7.6%
	Married couple households (including same-sex civil partnership couple households)	No children	236	20.8%	181	17.0%	13.8%
		With dependent children	155	13.7%	165	15.5%	16.4%
		All children non-dependent	54	4.8%	70	6.6%	6.1%
	Cohabiting couple households (including same-sex cohabiting couple households)	No children	107	9.4%	89	8.4%	5.7%
		With dependent children	37	3.3%	37	3.5%	5.6%
		All children non-dependent	5	0.4%	6	0.6%	0.6%
	Lone parent households	With dependent children	46	4.1%	34	3.2%	8.1%
All children non-dependent		31	2.7%	34	3.2%	3.6%	
Other households	With dependent children	20	1.8%	16	1.5%	2.9%	
	All full-time student	1	0.1%	0	0.0%	0.3%	
	All aged 65 and over	6	0.5%	9	0.8%	0.2%	
	Other	42	3.7%	38	3.6%	%	
<i>All households</i>		<i>1,135</i>	<i>100.0%</i>	<i>1,062</i>	<i>100.0%</i>	<i>100.0%</i>	

Source: Office for National Statistics 2001 Census (S053) and 2011 Census (QS113)

Ironbridge Gorge – 2011 Census Profile

Table 6: Households access to cars or vans

	Ironbridge Gorge				Telford and Wrekin 2011 %
	2011		2001		
	HHolds	%	HHolds	%	
No car or van	114	7.3%	122	11.5%	20.6%
1 car or van	610	39.1%	438	41.4%	43.1%
2 cars or vans	654	41.9%	380	35.9%	27.9%
3 cars or vans	139	8.9%	91	8.6%	6.3%
4 or more cars or vans	42	2.7%	27	2.6%	2.1%
<i>All households</i>	<i>1,559</i>	<i>100.0%</i>	<i>1,058</i>	<i>100.0%</i>	<i>100.0%</i>
Sum of all cars or vans in the area	2,534	n/a	1,588	n/a	84,671
Average cars or vans per household	1.63	n/a	1.50	n/a	1.27

Source: Office for National Statistics 2001 Census (UV62) and 2011 Census (KS404)

Table 7: Household deprivation

	Ironbridge Gorge				Telford and Wrekin 2011 %
	2011		2001		
	HHolds	%	HHolds	%	
Household not deprived in any dimension	619	54.5%	463	43.8%	41.7%
Household is deprived in 1 dimension	339	29.9%	331	31.3%	32.1%
Household is deprived in 2 dimensions	141	12.4%	190	18.0%	20.3%
Household is deprived in 3 dimensions	34	3.0%	68	6.4%	5.5%
Household is deprived in 4 dimensions	2	0.2%	4	0.4%	0.4%
Total deprived in at least one dimension	516	45.5%	593	56.2%	58.3%
<i>All households</i>	<i>1,135</i>	<i>100.0%</i>	<i>1,056</i>	<i>100.0%</i>	<i>100.0%</i>

Source: Office for National Statistics 2001 Census (UV67) and 2011 Census (QS119)

4 Housing

Summary:

- The number of household spaces in Ironbridge Gorge has increased by 97 since 2001 accounting for just 3.0% of the 3,181 growth seen Borough wide.
- Nearly two fifths of households in Ironbridge Gorge (39.6%) live in a detached house or bungalow, above the Borough rate of 30.8%.
- More than a third of households in Ironbridge Gorge (35.8%) own their home outright (27.2% Borough wide) with a further 38.7% of households owning their home through a loan or mortgage, higher than the 36.5% in this position Borough wide.
- The proportion of households in Ironbridge Gorge renting their home from a private landlord or letting agency has increased from 9.7% to 15.9% since 2001.

Table 8: Housing stock

	Ironbridge Gorge				Telford and Wrekin 2011 %
	2011		2001		
	HHold spaces	%	HHold spaces	%	
Occupied household space	1,135	91.8%	1,056	92.6%	96.9%
Unoccupied household space	102	8.2%	84	7.4%	3.1%
<i>All household spaces</i>	<i>1,237</i>	<i>100.0%</i>	<i>1,140</i>	<i>100.0%</i>	<i>100.0%</i>

Source: Office for National Statistics 2001 Census (UV53) and 2011 Census (QS417)

Ironbridge Gorge – 2011 Census Profile

Table 9: Accommodation type

		Ironbridge Gorge				Telford and Wrekin 2011 %
		2011		2001		
		H Holds	%	H Holds	%	
House or bungalow	Detached	449	39.6%	426	37.3%	30.8%
	Semi-detached	333	29.3%	327	28.7%	36.7%
	Terrace (including end terrace)	241	21.2%	248	21.7%	22.2%
Flat, maisonette or apartment	Purpose built	52	4.6%	60	5.3%	8.6%
	Part of a converted or shared house (includes bed-sits)	29	2.6%	35	3.1%	0.8%
	In a commercial building	27	2.4%	42	3.7%	0.5%
Caravan or other mobile or temporary structure		4	0.4%	3	0.3%	0.4%
In a shared dwelling		0	0.0%	0	0.0%	0.0%
<i>All households</i>		<i>1,135</i>	<i>100.0%</i>	<i>1,141</i>	<i>100.0%</i>	<i>100.0%</i>

Source: Office for National Statistics 2001 Census (UV056) and 2011 Census (QS402)

Table 10: Tenure

		Ironbridge Gorge				Telford and Wrekin 2011 %
		2011		2001		
		H Holds	%	H Holds	%	
Owned	Owns outright	406	35.8%	319	30.2%	27.2%
	Owns with a mortgage or loan	439	38.7%	496	46.9%	36.5%
Shared ownership		2	0.2%	3	0.3%	0.4%
Social rented	Rented from Council (Local Authority)	35	3.1%	48	4.5%	8.1%
	Other social rented	45	4.0%	58	5.5%	11.6%
Private rented	Private landlord or letting agency	180	15.9%	103	9.7%	13.6%
	Employer of a household member	3	0.3%	4	0.4%	0.2%
	Relative or friend of household member	10	0.9%	7	0.7%	0.9%
	Other	5	0.4%	3	0.3%	0.2%
Lives rent free		10	0.9%	16	1.5%	1.2%
<i>All households</i>		<i>1,135</i>	<i>100.0%</i>	<i>1,057</i>	<i>1057</i>	<i>100.0%</i>

Source: Office for National Statistics 2001 Census (UV63) and 2011 Census (QS405)

5 Employment and economy

Summary:

- Between 2001 and 2011 the economically active population in Ironbridge Gorge decreased slightly from 73.0% to 72.2%, but remains above the Borough rate (69.4%).
- The unemployment rate in the ward increased from 2.6% in 2001 to 3.3% in 2011.
- A total of 6.1% of Ironbridge Gorge residents aged 16-74 have never worked, below the Borough rate of 7.2%.
- The proportion of 'managers, directors and senior officials' in Ironbridge Gorge has fallen since 2001, from 22.7% to 17.6% with a corresponding increase in those employed in 'professional occupations'. Both of these occupational classes have greater proportions in the ward than Borough wide.
- More than a third of Household Reference Persons in Ironbridge Gorge (38.6%) are classed as social grade AB - higher and intermediate managerial/administrative/professional, more than double the Borough rate of 18.0%.
- The proportion of people in the ward who drive a car or van to work increased from 69.1% to 73.1%, above the Borough figure (70.0%).
- Some 39.8% of Ironbridge Gorge residents aged 16+ have level 4 and above qualifications, considerably higher than the 20.9% Borough wide.

Ironbridge Gorge - 2011 Census Profile

Table 11: Economic Activity

		Ironbridge Gorge				Telford and Wrekin
		2011		2001		2011
		People	%	People	%	%
Economically active	Full time employees	859	41.6%	891	46.3%	41.4%
	Part time employees	249	12.0%	185	9.6%	13.5%
	Self employed	289	14.0%	250	13.0%	7.0%
	Unemployed	68	3.3%	50	2.6%	4.7%
	Full time students	27	1.3%	30	1.6%	2.8%
	Total economically active	1,492	72.2%	1,406	73.0%	69.4%
Economically inactive	Retired	319	15.4%	240	12.5%	13.7%
	Students	74	3.6%	54	2.8%	5.1%
	Looking after home or family	63	3.0%	98	5.1%	4.8%
	Long term sick or disabled	87	4.2%	82	4.3%	4.9%
	Other	32	1.5%	45	2.3%	2.0%
	Total economically inactive	575	27.8%	519	27.0%	30.5%
<i>All usual residents aged 16-74</i>		<i>2,067</i>	<i>100.0%</i>	<i>1,925</i>	<i>100.0%</i>	<i>100.0%</i>

Source: Office for National Statistics 2001 Census (S021) and 2011 Census (QS601)

Table 12: Year last worked

	Ironbridge Gorge				Telford and Wrekin	
	2011		2001		2011	
	People	%	People	%	%	
In employment	1,417	68.6%	1,349	70.2%	64.1%	
Last worked in 2011 (2001)	32	1.5%	56	2.9%	1.3%	
Last worked in 2010 (2000)	80	3.9%	68	3.5%	4.7%	
Last worked in 2009 (1999)	59	2.9%	40	2.1%	2.9%	
Last worked in 2008 (1998)	50	2.4%	41	2.1%	2.2%	
Last worked in 2007 (1997)	34	1.6%	32	1.7%	1.6%	
Last worked in 2006 (1996)	28	1.4%	23	1.2%	1.5%	
Last worked in 2001 – 2005 (1991-1995)	88	4.3%	109	5.7%	5.8%	
Last worked before 2001 (1991)	152	7.4%	132	6.9%	8.6%	
Never worked	127	6.1%	73	3.8%	7.2%	
Total not in employment	650	31.4%	574	29.8%	35.9%	
<i>All usual residents aged 16-74</i>		<i>2,067</i>	<i>100.0%</i>	<i>1,923</i>	<i>100.0%</i>	<i>100.0%</i>

Source: Office for National Statistics 2001 Census (UV027) and 2011 Census (QS612)

Table 13: Occupation

	Ironbridge Gorge				Telford and Wrekin	
	2011		2001		2011	
	People	%	People	%	%	
1. Managers, directors and senior officials	249	17.6%	306	22.7%	9.5%	
2. Professional occupations	345	24.3%	264	19.6%	13.9%	
3. Associate professional and technical occupations	235	16.6%	205	15.2%	11.3%	
4. Administrative and secretarial occupations	139	9.8%	119	8.8%	11.5%	
5. Skilled trades occupations	151	10.7%	142	10.5%	11.9%	
6. Caring, leisure and other service occupations	82	5.8%	75	5.6%	9.3%	
7. Sales and customer service occupations	71	5.0%	62	4.6%	8.6%	
8. Process, plant and machine operatives	61	4.3%	82	6.1%	10.8%	
9. Elementary occupations	84	5.9%	94	7.0%	13.1%	
<i>All usual residents aged 16-74 in employment</i>		<i>1,417</i>	<i>100.0%</i>	<i>1,349</i>	<i>100.0%</i>	<i>100.0%</i>

Source: Office for National Statistics 2001 Census (UV030) and 2011 Census (QS606)

Ironbridge Gorge – 2011 Census Profile

Table 14: Approximated social grade

	Ironbridge Gorge		Telford and Wrekin
	2011		2011
	People	%	%
AB. Higher and intermediate managerial/administrative/professional	338	38.6%	18.0%
C1. Supervisory, clerical, junior managerial/administrative/professional	271	30.9%	28.3%
C2. Skilled manual workers	162	18.5%	22.9%
DE Semi-skilled and unskilled manual workers / On state benefit, unemployed, lowest grade workers	105	12.0%	30.8%
<i>All Household Reference Persons aged 16 – 64</i>	<i>876</i>	<i>100.0%</i>	<i>100.0%</i>

Source: Office for National Statistics 2011 Census (QS611)

Table 15: Means of Travel to Work

	Ironbridge Gorge				Telford and Wrekin
	2011		2001		2011
	People	%	People	%	%
Working at or from home	138	9.7%	175	12.8%	4.0%
Train, Underground, metro, light rail, tram	36	2.5%	22	1.6%	1.5%
Bus, minibus or coach	25	1.8%	41	3.0%	4.0%
Taxi	4	0.3%	6	0.4%	1.1%
Motorcycle, scooter or moped	6	0.4%	12	0.9%	0.7%
Driving a car or van	1,036	73.1%	942	69.1%	70.0%
Passenger in a car or van	75	5.3%	74	5.4%	8.0%
Bicycle	16	1.1%	25	1.8%	2.1%
On foot	75	5.3%	64	4.7%	8.0%
Other	6	0.4%	3	0.2%	0.5%
<i>All usual residents aged 16-74 in employment</i>	<i>1,417</i>	<i>100.0%</i>	<i>1,364</i>	<i>100.0%</i>	<i>100.0%</i>

Source: Office for National Statistics 2001 Census (S119) and 2011 Census (QS701)

Table 16: Highest level of qualifications

	Ironbridge Gorge				Telford and Wrekin
	2011		2001*		2011
	People	%	People	%	%
No qualifications	365	16.5%	443	23.0%	24.6%
Level 1	255	11.5%	260	13.5%	15.1%
Level 2	336	15.2%	374	19.4%	17.9%
Apprenticeship	65	2.9%			3.3%
Level 3	251	11.4%	152	7.9%	13.0%
Level 4 and above	880	39.8%	592	30.7%	20.9%
Other: Vocational/work-related qualifications, foreign qualifications (level unknown)	57	2.6%	106	5.5%	5.1%
<i>All people aged 16 and over*</i>	<i>2,209</i>	<i>100.0%</i>	<i>1,927</i>	<i>100.0%</i>	<i>100.0%</i>

*Data for 2001 is for aged 16-74 only so is not directly comparable to 2011.

Source: Office for National Statistics 2001 Census (UV024) and 2011 Census (KS501)

6 Health and care

Summary:

- Some 83.0% of people in Ironbridge Gorge reported good or very good health, compared with 80.2% Borough-wide. Just 22 people, 0.9% reported very bad health.
- A total of 17.0% of Ironbridge Gorge residents felt their day-to-day activities were limited by a long term health problem or disability, an increase since 2001, but still lower than the 18.6% seen across the Borough.
- Some 12.8% of residents in Ironbridge Gorge provided unpaid care, higher than the 10.8% seen Borough-wide.

Table 17: General health

	Ironbridge Gorge 2011		Telford and Wrekin 2011
	People	%	%
Very good health	1,247	48.3%	45.9%
Good health	895	34.7%	34.3%
Fair health	304	11.8%	13.6%
Bad health	114	4.4%	4.8%
Very bad health	22	0.9%	1.4%
<i>All usual residents</i>	<i>2,582</i>	<i>100.0%</i>	<i>100.0%</i>

Source: Office for National Statistics 2011 Census (KS301)

Table 18: Long-term health problem or disability

	Ironbridge Gorge				Telford and Wrekin 2011
	2011		2001		%
	People	%	People	%	
Day-to-day activities limited a lot	210	8.1%	374	15.5%	9.0%
Day-to-day activities limited a little	229	8.9%			9.6%
Day-to-day activities not limited	2,143	83.0%	2,043	84.5%	81.4%
<i>All usual residents</i>	<i>2,582</i>	<i>100.0%</i>	<i>2,417</i>	<i>100.0%</i>	<i>100.0%</i>

Source: Office for National Statistics 2001 Census (UV022) and 2011 Census (KS301)

Table 19: Provision of care

	Ironbridge Gorge				Telford and Wrekin 2011	
	2011		2001		%	
	People	%	People	%		
Provides no care	2,251	87.2%	2,101	89.0%	89.2%	
Unpaid care	1-19 hours a week	227	8.8%	194	8.2%	6.2%
	20-49 hours a week	34	1.3%	15	0.6%	1.6%
	50 or more hours a week	70	2.7%	52	2.2%	3.0%
Total providing care	331	12.8%	261	11.0%	10.8%	
<i>All usual residents</i>	<i>2,582</i>	<i>100.0%</i>	<i>2,362</i>	<i>100.0%</i>	<i>100.0%</i>	

Source: Office for National Statistics 2001 Census (UV021) and 2011 Census (KS301)

Notes and definitions

Household deprivation

The 2011 Census categorises households on their deprivation across four dimensions

- Employment – Any member of the household aged 16-74 who is not a full-time student is either unemployed or permanently sick
- Education – No member of the household aged 16 to pensionable age has at least 5 GCSEs (grade A-C) or equivalent AND no member of the household aged 16-18 is in full-time education
- Health and disability – Any member of the household has general health 'not good' in the year before census or has a limiting long term illness
- Housing – The household's accommodation is either overcrowded (occupancy indicator is -1 or less) OR is in a shared dwelling OR does not have sole use of bath/shower and toilet OR has no central heating.

Household Reference Persons

HRPs provide an individual person within a household to act as a reference point for producing further derived statistics and for characterising a whole household according to characteristics of the chosen reference person.

- For a person living alone, it follows that this person is the HRP.
- If a household contains only one family, then the HRP is the same as the Family Reference Person (FRP).
- If there is more than one family in a household, the HRP is chosen from among the FRPs using the same criteria used to choose the FRP i.e selected on the basis of their economic activity, in the priority order.
 - Economically active, employed, full-time, non-student
 - Economically active, employed, full-time student
 - Economically active, employed, part-time, non-student
 - Economically active, employed, part-time, student
 - Economically active, unemployed, non-student
 - Economically active, unemployed, student
 - Economically inactive, retired
 - Economically inactive, other
- If some are all FRPs have the same economic activity, the HRP is the eldest of the FRPs, if some or all are the same age, the HRP is the first of the FRPs from the order in which they were listed on the questionnaire.
- If a household is made up entirely of any combination of ungrouped individuals and other related families, the HRP is chosen from among all people in the household, using the same criteria used to choose between FRPs.
- Students at their non term-time address and short-term migrants cannot be HRP.

Dependent children

A dependent child is a person aged 0-15 in a household (whether or not in a family) or aged 16-18 in full-time education and living in a family with his or her parent(s). It does not include any children who have a spouse, partner or child living in the household.