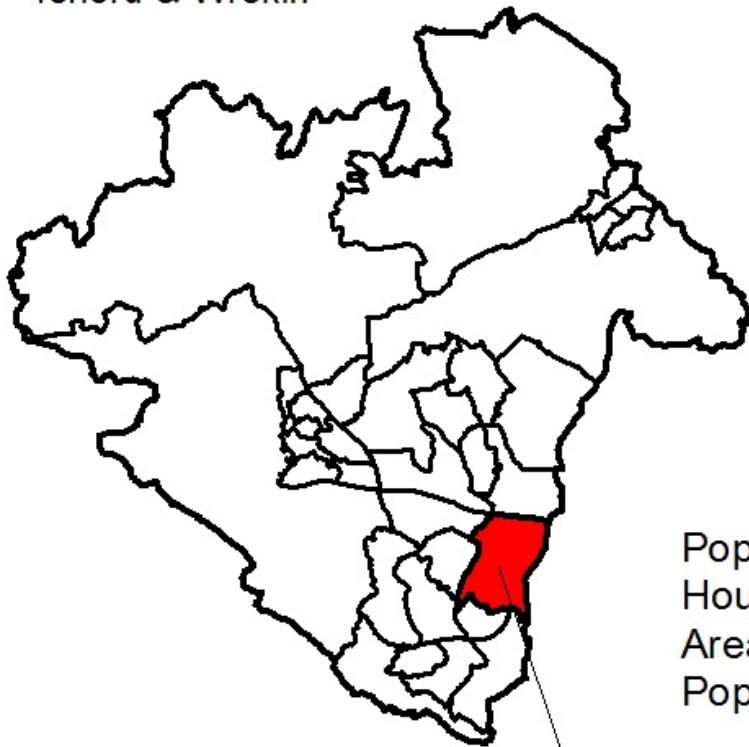
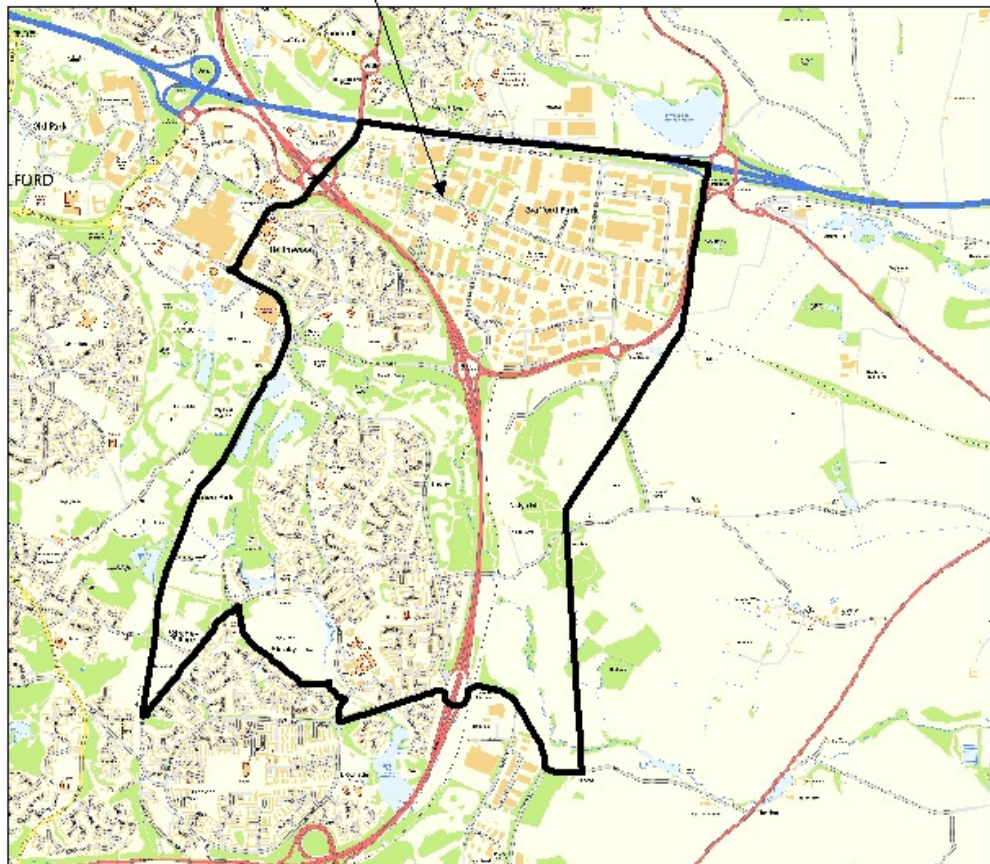


The Nedge - 2011 Census Profile

Telford & Wrekin



Population: 9,381
Households: 3,588
Area (hectares): 632.3
Population Density: 14.8



©Crown copyright. All rights reserved. Borough of Telford & Wrekin Licence No. 100019694. Date. 2013

The Nedge - 2011 Census Profile

1 Population Characteristics

Summary:

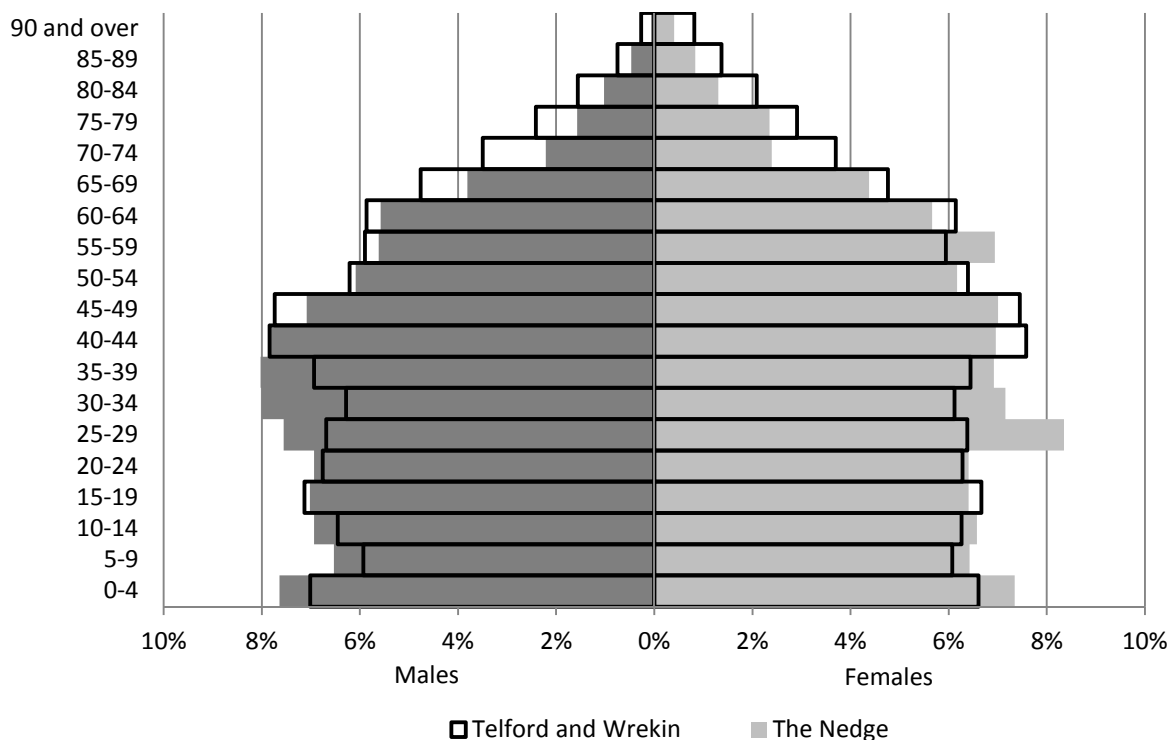
- The Nedge's population decreased by 2.4% between 2001 and 2011. Currently with 9,381 people living in the ward's 632 hectares the population density of the ward is 14.8, higher than the density of 5.7 Borough wide.
- In the ten years prior to the 2011 Census, the 0-15 age group of the ward decreased by 13.0%.
- The Nedge has a smaller proportion of 65+ population than Borough wide.

Table 1: Age structure

	The Nedge				Telford and Wrekin 2011 %
	2011		2001		
	People	%	People	%	
0-4	703	7.5%	649	6.8%	6.8%
5-9	608	6.5%	720	7.5%	6.0%
10-15	742	7.9%	992	10.3%	7.7%
16-24	1,148	12.2%	1,372	14.3%	12.1%
25-44	2,852	30.4%	2,872	29.9%	27.1%
45-64	2,352	25.1%	2,202	22.9%	25.8%
65-84	893	9.5%	730	7.6%	12.8%
85+	83	0.9%	71	0.7%	1.6%
<i>All usual residents</i>	<i>9,381</i>	<i>100.0%</i>	<i>9,608</i>	<i>100.0%</i>	<i>100.0%</i>

Source: Office for National Statistics 2001 and 2011 Census (KS102)

Figure 1: Population pyramid



Source: Office for National Statistics 2011 Census (PP05 and PP06)

2 Diversity

Summary:

- The BME population of The Nedge grew by 87.0% between 2001 and 2011, accounting for 14.9% of the ward's total population, higher than Borough-wide (10.6%).
- The Black/African/Caribbean/Black British population of the ward has more than doubled and at 3.0% is nearly three times the Borough figure.
- Although the proportion of Christians decreased from 70.5% to 54.9%, it still remained the largest religious group in the ward, but lower than the Borough-wide figure (61.7%). Muslim, Hindu and Sikh groups have doubled in the ward since 2001.
- For the first time in a census, people were asked for their main language. Some 6.0% of the ward population had a main language other than English, higher than the 4.1% Borough wide.

Table 2: Ethnic background

	The Nedge				Telford and Wrekin 2011 %
	2011		2001		
	People	%	People	%	
White British	7,982	85.1%	884	92.2%	89.5%
Other White	358	3.8%	165	1.7%	3.2%
Mixed/multiple	210	2.2%	146	1.5%	1.8%
Asian/Asian British	522	5.6%	277	2.9%	4.2%
Black/African/Caribbean/Black British	279	3.0%	107	1.1%	1.1%
Other ethnic group	30	0.3%	53	0.6%	0.3%
All BME	1,399	14.9%	748	7.8%	10.6%
<i>All usual residents</i>	<i>9,381</i>	<i>100.0%</i>	<i>9,592</i>	<i>100.0%</i>	<i>100.0%</i>

Source: Office for National Statistics 2001 and 2011 Census (KS201)

Table 3: Religion

	The Nedge				Telford and Wrekin 2011 %
	2011		2001		
	People	%	People	%	
Buddhist	23	0.2%	37	0.4%	0.2%
Christian	5,152	54.9%	6,768	70.5%	61.7%
Hindu	203	2.2%	88	0.9%	0.5%
Jewish	3	0.0%	8	0.1%	0.0%
Muslim	101	1.1%	59	0.6%	1.8%
Sikh	118	1.3%	54	0.6%	1.3%
Other religion	65	0.7%	52	0.5%	0.4%
No religion	3,035	32.4%	1,927	20.1%	27.4%
Religion not stated	681	7.3%	601	6.3%	6.6%
Total with religion	5,665	60.4%	7,067	73.7%	66.1%
<i>All usual residents</i>	<i>9,381</i>	<i>100.0%</i>	<i>9,594</i>	<i>100.0%</i>	<i>100.0%</i>

Source: Office for National Statistics 2001 Census (KS007) and 2011 Census (KS209)

The Nedge – 2011 Census Profile

Table 4: English language proficiency

		The Nedge		Telford and Wrekin
		2011		2011
		People	%	%
Main language is English		8,419	94.0%	95.9%
Main language is not English	Speaks English very well	185	2.1%	1.4%
	Speaks English well	228	2.5%	1.7%
	Does not speak English well	112	1.3%	0.9%
	Does not speak English at all	10	0.1%	0.2%
<i>All people aged 3 and over</i>		<i>8,954</i>	<i>100.0%</i>	<i>100.0%</i>

Source: Office for National Statistics 2011 Census (QS205)

3 Household and family characteristics

Summary:

- The 2011 Census found 3,680 occupied household spaces in The Nedge accommodating 9,357 people, giving an average household size of 2.65 slightly higher than the Borough wide household size of 2.54.
- Just over a fifth (22.6%) of households in The Nedge are one person households, slightly lower than the Borough figure of 25.2%
- The predominant household type in the ward, at 15.4%, is married couples with dependent children, although this household type has decreased considerably from 21.6% since 2001.
- More than a quarter of households (26.6%) do not have access to car, up from 23.3% in 2001 and above the Borough rate (20.6%). The average number of cars per household is 1.09 compared to 1.27 Borough wide.
- A total of 250 households in The Nedge were deprived across three or four dimensions, some 7.0%, higher than the 5.9% of households Borough wide deprived in three or more dimensions.

Table 5: Household structure

		The Nedge				Telford and Wrekin	
		2011		2001		2011	
		HHolds	%	HHolds	%	%	
One person	Aged 65 and over	297	8.3%	298	8.2%	10.7%	
	Other	515	14.4%	518	14.3%	14.5%	
One family and no others	All aged 65 and over		177	4.9%	186	5.1%	7.6%
	Married couple households (including same-sex civil partnership couple households)	No children	482	13.4%	473	13.1%	13.8%
		With dependent children	552	15.4%	782	21.6%	16.4%
		All children non-dependent	262	7.3%	272	7.5%	6.1%
	Cohabiting couple households (including same-sex cohabiting couple households)	No children	166	4.6%	185	5.1%	5.7%
		With dependent children	237	6.6%	187	5.2%	5.6%
		All children non-dependent	24	0.7%	13	0.4%	0.6%
	Lone parent households	With dependent children	389	10.8%	345	9.5%	8.1%
All children non-dependent		136	3.8%	126	3.5%	3.6%	
Other households	With dependent children	148	4.1%	106	2.9%	2.9%	
	All full-time student	1	0.0%	13	0.4%	0.3%	
	All aged 65 and over	6	0.2%	6	0.2%	0.2%	
	Other	196	5.5%	112	3.1%	%	
<i>All households</i>		<i>3,588</i>	<i>100.0%</i>	<i>3,622</i>	<i>100.0%</i>	<i>100.0%</i>	

Source: Office for National Statistics 2001 Census (S053) and 2011 Census (QS113)

The Nedge – 2011 Census Profile

Table 6: Households access to cars or vans

	The Nedge				Telford and Wrekin 2011 %
	2011		2001		
	HHolds	%	HHolds	%	
No car or van	954	26.6%	842	23.3%	20.6%
1 car or van	1,617	45.1%	1,812	50.1%	43.1%
2 cars or vans	805	22.4%	782	21.6%	27.9%
3 cars or vans	162	4.5%	150	4.1%	6.3%
4 or more cars or vans	50	1.4%	32	0.9%	2.1%
<i>All households</i>	<i>3,588</i>	<i>100.0%</i>	<i>3,618</i>	<i>100.0%</i>	<i>100.0%</i>
Sum of all cars or vans in the area	3,928	n/a	3,960	n/a	84,671
Average cars or vans per household	1.09	n/a	1.09	n/a	1.27

Source: Office for National Statistics 2001 Census (UV62) and 2011 Census (KS404)

Table 7: Household deprivation

	The Nedge				Telford and Wrekin 2011 %
	2011		2001		
	HHolds	%	HHolds	%	
Household not deprived in any dimension	1,325	36.9%	1,110	30.6%	41.7%
Household is deprived in 1 dimension	1,222	34.1%	1,305	36.0%	32.1%
Household is deprived in 2 dimensions	791	22.0%	832	23.0%	20.3%
Household is deprived in 3 dimensions	235	6.5%	354	9.8%	5.5%
Household is deprived in 4 dimensions	15	0.4%	21	0.6%	0.4%
Total deprived in at least one dimension	2,264	63.1%	2,512	69.4%	58.3%
<i>All households</i>	<i>3,588</i>	<i>100.0%</i>	<i>3,622</i>	<i>100.0%</i>	<i>100.0%</i>

Source: Office for National Statistics 2001 Census (UV67) and 2011 Census (QS119)

4 Housing

Summary:

- The number of household spaces in Apley Castle has decreased by 19 since 2001 with the proportion of unoccupied household spaces increasing slightly from 2.1% to 2.5%.
- More than two in five households in The Nedge (42.3%) live in a terraced house or bungalow, almost twice the Borough figure of 22.2%.
- More than a third of households in The Nedge (38.4%) own their home with a mortgage or loan (26.5% Borough wide) with a further 19.6% of households owning their home outright, lower than the 27.2% in this position Borough wide.
- A total of 309 households in The Nedge mistakenly believe they rent their home from the Council, a slight decrease on 336 in 2001.
- The number of households in The Nedge privately renting their home has doubled since 2001 as seen Borough wide.

Table 8: Housing stock

	The Nedge				Telford and Wrekin 2011 %
	2011		2001		
	HHold spaces	%	HHold spaces	%	
Occupied household space	3,588	97.5%	3,622	97.9%	96.9%
Unoccupied household space	92	2.5%	77	2.1%	3.1%
<i>All household spaces</i>	<i>3,680</i>	<i>100.0%</i>	<i>3,699</i>	<i>100.0%</i>	<i>100.0%</i>

Source: Office for National Statistics 2001 Census (UV53) and 2011 Census (QS417)

The Nedge – 2011 Census Profile

Table 9: Accommodation type

		The Nedge				Telford and Wrekin 2011 %
		2011		2001		
		H Holds	%	H Holds	%	
House or bungalow	Detached	650	18.1%	652	17.6%	30.8%
	Semi-detached	954	26.6%	963	26.0%	36.7%
	Terrace (including end terrace)	1,517	42.3%	1,613	43.6%	22.2%
Flat, maisonette or apartment	Purpose built	434	12.1%	456	12.3%	8.6%
	Part of a converted or shared house (includes bed-sits)	27	0.8%	4	0.1%	0.8%
	In a commercial building	5	0.1%	8	0.2%	0.5%
Caravan or other mobile or temporary structure		1	0.0%	3	0.1%	0.4%
In a shared dwelling		0	0.0%	3	0.1%	0.0%
<i>All households</i>		<i>3,588</i>	<i>100.0%</i>	<i>3,702</i>	<i>100.0%</i>	<i>100.0%</i>

Source: Office for National Statistics 2001 Census (UV056) and 2011 Census (QS402)

Table 10: Tenure

		The Nedge				Telford and Wrekin 2011 %
		2011		2001		
		H Holds	%	H Holds	%	
Owned	Owns outright	705	19.6%	419	11.6%	27.2%
	Owns with a mortgage or loan	1,376	38.4%	1,926	53.2%	36.5%
Shared ownership		7	0.2%	14	0.4%	0.4%
Social rented	Rented from Council (Local Authority)	309	8.6%	336	9.3%	8.1%
	Other social rented	547	15.2%	580	16.0%	11.6%
Private rented	Private landlord or letting agency	567	15.8%	279	7.7%	13.6%
	Employer of a household member	1	0.0%	0	0.0%	0.2%
	Relative or friend of household member	40	1.1%	19	0.5%	0.9%
	Other	2	0.1%	3	0.1%	0.2%
Lives rent free		34	0.9%	47	1.3%	1.2%
<i>All households</i>		<i>3,588</i>	<i>100.0%</i>	<i>3,623</i>	<i>100.0%</i>	<i>100.0%</i>

Source: Office for National Statistics 2001 Census (UV63) and 2011 Census (QS405)

5 Employment and economy

Summary:

- Between 2001 and 2011 the economically active population in The Nedge changed very little from 71.6% to 71.7%, above the Borough rate (69.4%).
- Unemployment rate in the ward increased from 4.5% in 2001 to 6.3% in 2011.
- A total of 7.7% of residents of The Nedge aged 16-74 have never worked, slightly above the Borough rate of 7.2%.
- The proportion of 'managers, directors and senior officials' in The Nedge has fallen since 2001 from 11.1% to 7.3% in 2011, and is now lower than the Borough average.
- More than a third of Household Reference Persons in The Nedge (37.4%) are classed as social grade DE – Semi-skilled and unskilled manual workers / on state benefit, unemployed, lowest grade workers, higher than the Borough rate of 30.8%.
- At 7.1% the proportion of people in The Nedge who travel to work via 'bus, minibus or coach' is almost twice the Borough rate (4.0%).
- Just over a quarter (25.4%) of The Nedge residents aged 16+ have no qualifications, similar to the Borough figure of 24.6%.

The Nedge - 2011 Census Profile

Table 11: Economic Activity

		The Nedge				Telford and Wrekin 2011 %
		2011		2001		
		People	%	People	%	
Economically active	Full time employees	3,011	43.3%	3,310	47.7%	41.4%
	Part time employees	992	14.3%	836	12.1%	13.5%
	Self employed	338	4.9%	307	4.4%	7.0%
	Unemployed	435	6.3%	311	4.5%	4.7%
	Full time students	211	3.0%	197	2.8%	2.8%
	Total economically active	4,987	71.7%	4,961	71.6%	69.4%
Economically inactive	Retired	744	10.7%	561	8.1%	13.7%
	Students	282	4.1%	232	3.3%	5.1%
	Looking after home or family	384	5.5%	513	7.4%	4.8%
	Long term sick or disabled	421	6.1%	472	6.8%	4.9%
	Other	134	1.9%	193	2.8%	2.0%
	Total economically inactive	1,965	28.3%	1,971	28.4%	30.5%
<i>All usual residents aged 16-74</i>		<i>6,952</i>	<i>100.0%</i>	<i>6,932</i>	<i>100.0%</i>	<i>100.0%</i>

Source: Office for National Statistics 2001 Census (S021) and 2011 Census (QS601)

Table 12: Year last worked

	The Nedge				Telford and Wrekin 2011 %	
	2011		2001			
	People	%	People	%		
In employment	4,500	64.7%	4,618	66.6%	64.1%	
Last worked in 2011 (2001)	84	1.2%	256	3.7%	1.3%	
Last worked in 2010 (2000)	329	4.7%	325	4.7%	4.7%	
Last worked in 2009 (1999)	216	3.1%	200	2.9%	2.9%	
Last worked in 2008 (1998)	165	2.4%	150	2.2%	2.2%	
Last worked in 2007 (1997)	117	1.7%	90	1.3%	1.6%	
Last worked in 2006 (1996)	107	1.5%	102	1.5%	1.5%	
Last worked in 2001 – 2005 (1991-1995)	374	5.4%	345	5.0%	5.8%	
Last worked before 2001 (1991)	528	7.6%	503	7.3%	8.6%	
Never worked	532	7.7%	341	4.9%	7.2%	
Total not in employment	2,452	35.3%	2,312	33.4%	35.9%	
<i>All usual residents aged 16-74</i>		<i>6,952</i>	<i>100.0%</i>	<i>6,930</i>	<i>100.0%</i>	<i>100.0%</i>

Source: Office for National Statistics 2001 Census (UV027) and 2011 Census (QS612)

Table 13: Occupation

	The Nedge				Telford and Wrekin 2011 %	
	2011		2001			
	People	%	People	%		
1. Managers, directors and senior officials	327	7.3%	514	11.1%	9.5%	
2. Professional occupations	469	10.4%	330	7.1%	13.9%	
3. Associate professional and technical occupations	408	9.1%	457	9.9%	11.3%	
4. Administrative and secretarial occupations	474	10.5%	493	10.7%	11.5%	
5. Skilled trades occupations	497	11.0%	546	11.8%	11.9%	
6. Caring, leisure and other service occupations	487	10.8%	255	5.5%	9.3%	
7. Sales and customer service occupations	468	10.4%	446	9.7%	8.6%	
8. Process, plant and machine operatives	615	13.7%	760	16.5%	10.8%	
9. Elementary occupations	755	16.8%	817	17.7%	13.1%	
<i>All usual residents aged 16-74 in employment</i>		<i>4,500</i>	<i>100.0%</i>	<i>4,618</i>	<i>100.0%</i>	<i>100.0%</i>

Source: Office for National Statistics 2001 Census (UV030) and 2011 Census (QS606)

The Nedge – 2011 Census Profile

Table 14: Approximated social grade

	The Nedge 2011		Telford and Wrekin 2011
	People	%	%
AB. Higher and intermediate managerial/administrative/professional	405	13.9%	18.0%
C1. Supervisory, clerical, junior managerial/administrative/professional	726	24.9%	28.3%
C2. Skilled manual workers	696	23.8%	22.9%
DE Semi-skilled and unskilled manual workers / On state benefit, unemployed, lowest grade workers	1,092	37.4%	30.8%
<i>All Household Reference Persons aged 16 – 64</i>	<i>2,919</i>	<i>100.0%</i>	<i>100.0%</i>

Source: Office for National Statistics 2011 Census (QS611)

Table 15: Means of Travel to Work

	The Nedge				Telford and Wrekin 2011
	2011		2001		% 2011
	People	%	People	%	
Working at or from home	109	2.4%	268	5.8%	4.0%
Train, Underground, metro, light rail, tram	62	1.4%	44	1.0%	1.5%
Bus, minibus or coach	320	7.1%	314	6.8%	4.0%
Taxi	87	1.9%	59	1.3%	1.1%
Motorcycle, scooter or moped	37	0.8%	48	1.0%	0.7%
Driving a car or van	2,765	61.4%	2,733	59.1%	70.0%
Passenger in a car or van	493	11.0%	545	11.8%	8.0%
Bicycle	105	2.3%	99	2.1%	2.1%
On foot	503	11.2%	490	10.6%	8.0%
Other	19	0.4%	21	0.5%	0.5%
<i>All usual residents aged 16-74 in employment</i>	<i>4,500</i>	<i>100.0%</i>	<i>4,621</i>	<i>100.0%</i>	<i>100.0%</i>

Source: Office for National Statistics 2001 Census (S119) and 2011 Census (QS701)

Table 16: Highest level of qualifications

	The Nedge				Telford and Wrekin 2011
	2011		2001*		% 2011
	People	%	People	%	
No qualifications	1,864	25.4%	2,279	32.9%	24.6%
Level 1	1,381	18.8%	1,429	20.6%	15.1%
Level 2	1,357	18.5%	1,505	21.7%	17.9%
Apprenticeship	221	3.0%			3.3%
Level 3	822	11.2%	516	7.5%	13.0%
Level 4 and above	1,251	17.1%	675	9.8%	20.9%
Other: Vocational/work-related qualifications, foreign qualifications (level unknown)	432	5.9%	518	7.5%	5.1%
<i>All people aged 16 and over*</i>	<i>7,328</i>	<i>100.0%</i>	<i>6,922</i>	<i>100.0%</i>	<i>100.0%</i>

*Data for 2001 is for aged 16-74 only so is not directly comparable to 2011.

Source: Office for National Statistics 2001 Census (UV024) and 2011 Census (KS501)

6 Health and care

Summary:

- Some 81.4% of people in The Nedge reported good or very good health, comparable to 80.2% Borough-wide. A total of 116 people, 1.2% reported very bad health, slightly lower than the Borough rate of 1.4%.
- A total of 17.8% of The Nedge residents felt their day-to-day activities were limited by a long term health problem or disability, similar to 2001, and slightly lower than the 18.6% seen across the Borough.
- Some 10.4% of residents in The Nedge provided unpaid care, similar to the 10.8% seen Borough-wide.

Table 17: General health

	The Nedge 2011		Telford and Wrekin 2011
	People	%	%
Very good health	4,382	46.7%	45.9%
Good health	3,258	34.7%	34.3%
Fair health	1,195	12.7%	13.6%
Bad health	430	4.6%	4.8%
Very bad health	116	1.2%	1.4%
<i>All usual residents</i>	<i>9,381</i>	<i>100.0%</i>	<i>100.0%</i>

Source: Office for National Statistics 2011 Census (KS301)

Table 18: Long-term health problem or disability

	The Nedge				Telford and Wrekin 2011
	2011		2001		%
	People	%	People	%	
Day-to-day activities limited a lot	811	8.6%	1,650	17.2%	9.0%
Day-to-day activities limited a little	856	9.1%			9.6%
Day-to-day activities not limited	7,714	82.2%	7,943	82.8%	81.4%
<i>All usual residents</i>	<i>9,381</i>	<i>100.0%</i>	<i>9,593</i>	<i>100.0%</i>	<i>100.0%</i>

Source: Office for National Statistics 2001 Census (UV022) and 2011 Census (KS301)

Table 19: Provision of care

	The Nedge				Telford and Wrekin 2011	
	2011		2001		%	
	People	%	People	%		
Provides no care	8,407	89.6%	8,680	90.7%	89.2%	
Unpaid care	1-19 hours a week	489	5.2%	522	5.5%	6.2%
	20-49 hours a week	167	1.8%	109	1.1%	1.6%
	50 or more hours a week	318	3.4%	256	2.7%	3.0%
Total providing care	974	10.4%	887	9.3%	10.8%	
<i>All usual residents</i>	<i>9,381</i>	<i>100.0%</i>	<i>9,567</i>	<i>100.0%</i>	<i>100.0%</i>	

Source: Office for National Statistics 2001 Census (UV021) and 2011 Census (KS301)

Notes and definitions

Household deprivation

The 2011 Census categorises households on their deprivation across four dimensions

- Employment – Any member of the household aged 16-74 who is not a full-time student is either unemployed or permanently sick
- Education – No member of the household aged 16 to pensionable age has at least 5 GCSEs (grade A-C) or equivalent AND no member of the household aged 16-18 is in full-time education
- Health and disability – Any member of the household has general health 'not good' in the year before census or has a limiting long term illness
- Housing – The household's accommodation is either overcrowded (occupancy indicator is -1 or less) OR is in a shared dwelling OR does not have sole use of bath/shower and toilet OR has no central heating.

Household Reference Persons

HRPs provide an individual person within a household to act as a reference point for producing further derived statistics and for characterising a whole household according to characteristics of the chosen reference person.

- For a person living alone, it follows that this person is the HRP.
- If a household contains only one family, then the HRP is the same as the Family Reference Person (FRP).
- If there is more than one family in a household, the HRP is chosen from among the FRPs using the same criteria used to choose the FRP i.e selected on the basis of their economic activity, in the priority order.
 - Economically active, employed, full-time, non-student
 - Economically active, employed, full-time student
 - Economically active, employed, part-time, non-student
 - Economically active, employed, part-time, student
 - Economically active, unemployed, non-student
 - Economically active, unemployed, student
 - Economically inactive, retired
 - Economically inactive, other
- If some are all FRPs have the same economic activity, the HRP is the eldest of the FRPs, if some or all are the same age, the HRP is the first of the FRPs from the order in which they were listed on the questionnaire.
- If a household is made up entirely of any combination of ungrouped individuals and other related families, the HRP is chosen from among all people in the household, using the same criteria used to choose between FRPs.
- Students at their non term-time address and short-term migrants cannot be HRP.

Dependent children

A dependent child is a person aged 0-15 in a household (whether or not in a family) or aged 16-18 in full-time education and living in a family with his or her parent(s). It does not include any children who have a spouse, partner or child living in the household.