



ERCALL MAGNA PARISH COUNCIL

9 Burnham Avenue
Belvidere Paddocks
Shrewsbury
Shropshire. SY2 5LL

Email: eg.davies@virgin.net

Website: www.ercallmagnaparishcouncil.gov.uk

Parish Clerk: Edward Davies PILCM
28th January 2013

To: Katherine Kynaston
Business & Development Planning Manager
Telford & Wrekin Council
Wellington Civic Offices
Larkin Way
Telford
TF1 1LX

Ercall Magna Parish Council

**Application for Designation of a Neighbourhood Plan Area
Application to Telford & Wrekin Council**

Ercall Magna Parish Council, being a 'relevant body', as required by legislation under Neighbourhood Planning (General) Regulations 2012, wishes to prepare a Neighbourhood Development Plan. We confirm that Ercall Magna Parish Council is a relevant body for the purposes of section 61G of the 1990 Town and Country Planning Act.

Ercall Magna Parish Council is situated on the Shropshire plain at an altitude generally of 240 feet (70 metres) above sea level and is the largest rural parish (in area) in the Unitary Authority of Telford & Wrekin Council.

It has an area of 3,739 Hectares (14.43 sq miles) and a perimeter of 38.84 Km's (24.13 miles). There are approximately 700 properties in the parish and an electorate of 1350. The 2001 census showed a total population of the parish of 1682. In the centre of the parish is the village of High Ercall, with hamlets in Cold Hatton, Cotwall, Ellerdine, Ellerdine Heath, Moortown, Osbaston, Poynton, Poynton Green, Roden, Rowton, Shirlowe and Walton.

The boundaries of the parish are mostly within the Telford & Wrekin Council area except to the west which is with Shropshire Council. To the east and south there are splendid views across the Wrekin, and south Shropshire hills. It has easy access to the medieval town of Shrewsbury and the modern town of Telford.

At its meeting on Monday 28th January 2013 Ercall Magna Parish Council discussed the possible Neighbourhood Plan areas which could include any, all or part of the villages and hamlets in the parish.

It was unanimously agreed that the defined Neighbourhood area would be bounded by the parish boundary in its entirety as shown in the accompanying map. We consider the area defined as being an appropriate area to be designated as a Neighbourhood area.

The Parish Council has established a Steering Group of representative Councillors, Officers and members of the Community to oversee and advise on the delivery of the Neighbourhood Plan.

It is accepted that Ercall Magna Parish Council is within an area for limited growth and development and for promoting or improving the social, economic and environmental wellbeing of the area. Therefore we feel it is vital that local communities have a say in local decision making reflecting future development.

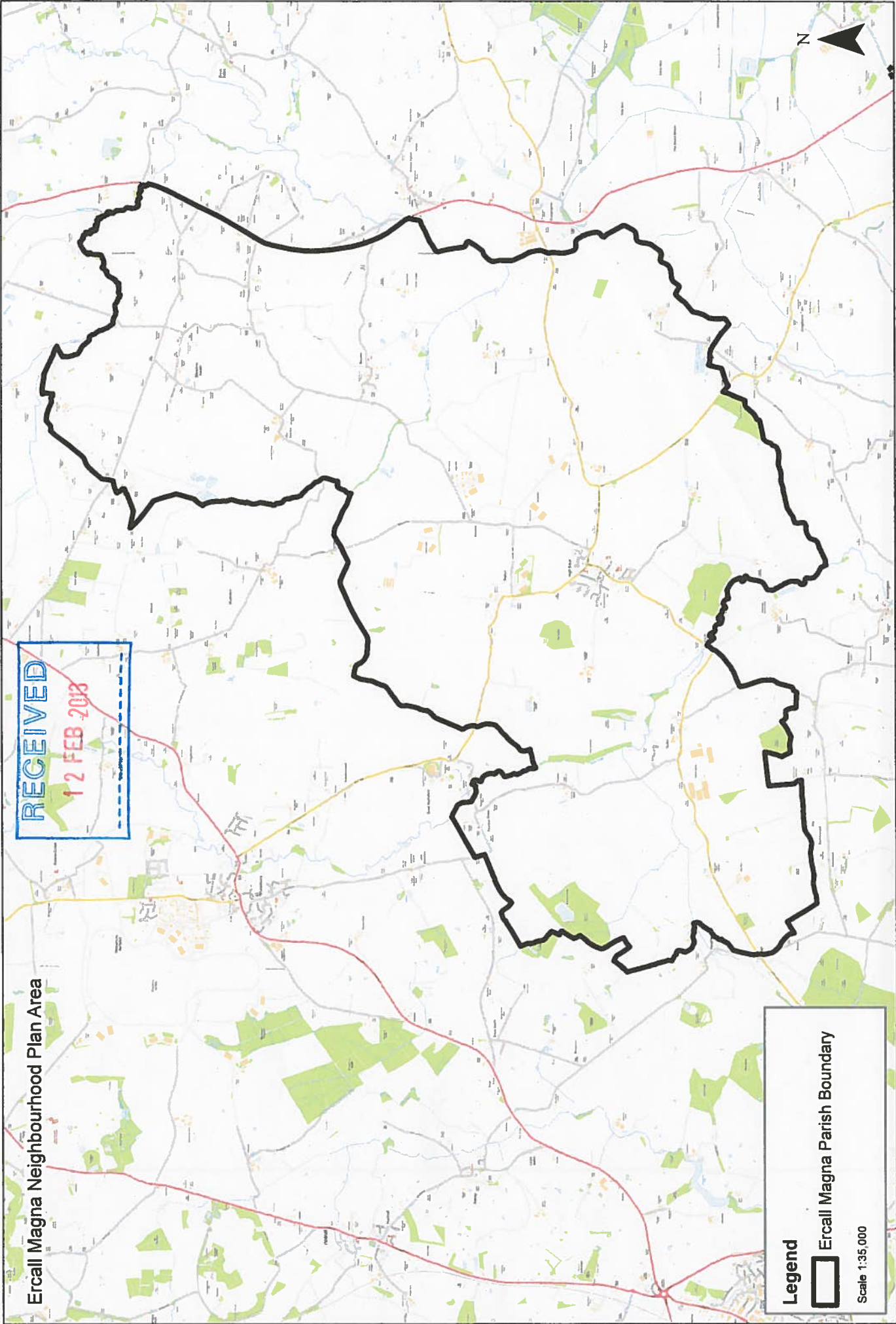
The Parish Council requests that you commence to process this application as set out in paragraph 6 of Part 2 of Schedule 9 of the Localism Act 2011.

Yours sincerely,


Edward Davies PILCM
Parish Clerk
Ercall Magna Parish Council

Ercall Magna Neighbourhood Plan Area

RECEIVED
12 FEB 2013



Legend

 Ercall Magna Parish Boundary

Scale 1:35,000