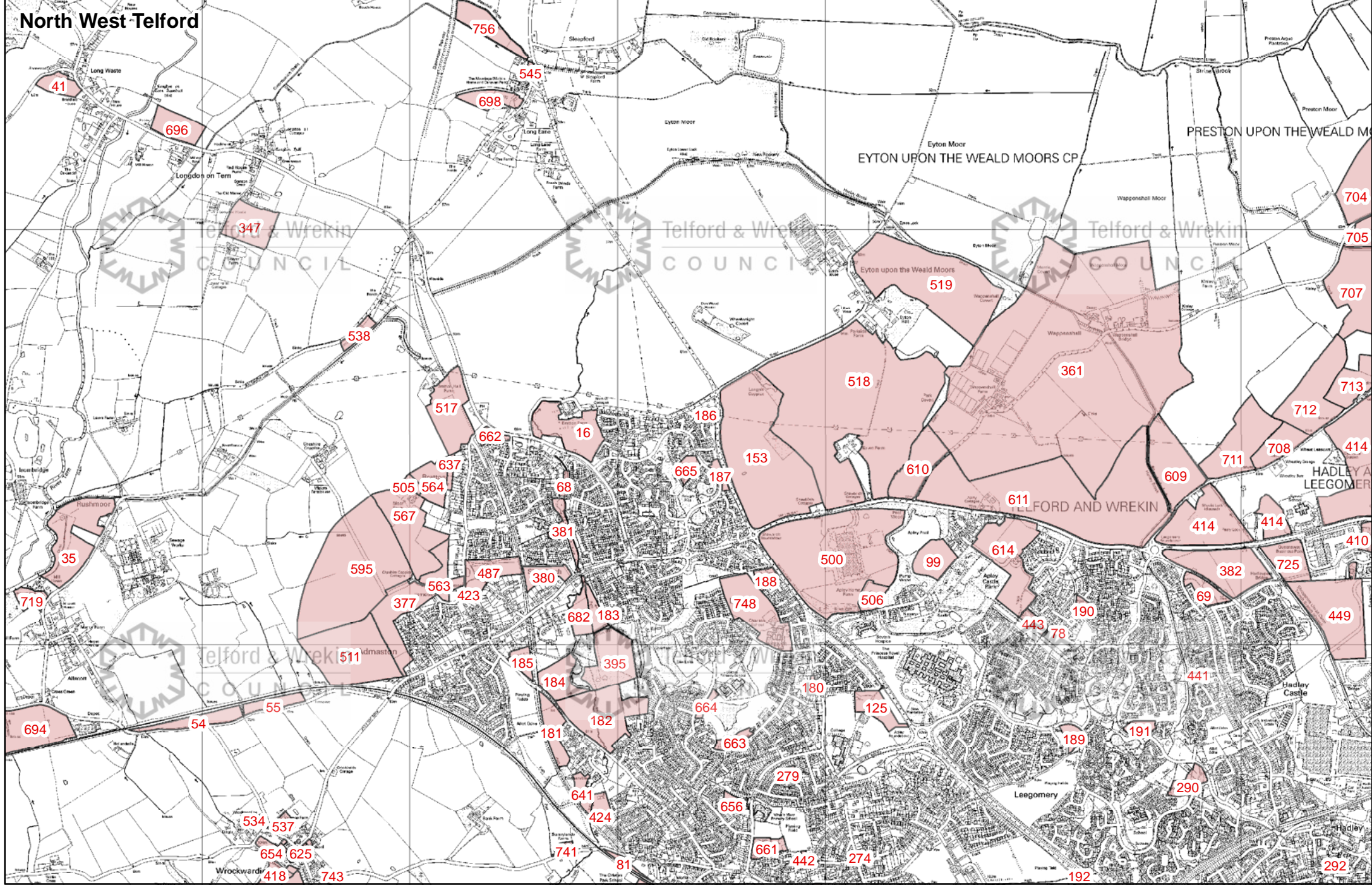


# North West Telford



**Strategic Housing Land Availability Assessment 2012**

Reproduced from the Ordnance Survey mapping with the permission of the Controller of Her Majesty's Stationery Office © Crown copyright. Unauthorised reproduction infringes Crown copyright and may lead to prosecution or civil proceedings  
 Borough of Telford & Wrekin Licence No 100019694. Date. 2013

Scale 1: 23,000  
 Size: A4  
 R:\LDF\SHLAA2012\SHLAA2012NorthWestTelford.mxd  
 Produced by R.Overy