

# YOUR GUIDE TO COVID TESTING

# 19



Shropshire, Telford & Wrekin  
Sustainability and Transformation Partnership



## AN OVERVIEW

### THE PCR/SWAB TEST

Tests for the presence of virus in your body. You may be asked to do this test to confirm if you **currently** have COVID-19

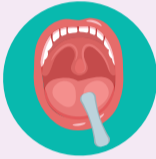
To maximise accuracy of the test, you should ideally be tested within **1-3 days and up to a maximum of 5 days after** you have symptoms

Tests will be carried out using:

Nose swabs



Throat swabs

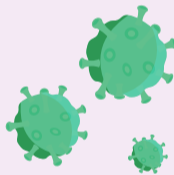


#### POSITIVE +

Confirms you currently have the virus and must **self-isolate** or seek medical assistance if unwell

#### Does not tell you

How ill you might become or when you got the virus



#### NEGATIVE -

If you are still experiencing symptoms you may be asked to be re-tested 2-3 days later and continue to be isolated.

If it has been more than 28 days since your symptoms started, you might consider having an antibody test.

#### PROCESS

We are following the national criteria to help identify staff or household members eligible for testing as follows:

- 1) The staff member has Covid-19 symptoms **OR**
- 2) The staff member is self-isolating due to an adult or child household member(s) having symptoms. In this instance it is the household member(s) displaying the most acute symptoms of Covid-19 who should be tested, rather than the staff member themselves.

#### CONTACT

Staff can register for a test through the Self-Referral and Employer Portals on [gov.uk](https://www.gov.uk)

### THE ANTIBODY TEST

Test to see if you have been **previously** infected with the virus and have an immune response

This test works best at least **28 days following** your first symptoms

Tests will be carried out using:

A blood sample



#### POSITIVE +

You have had the virus and had an immune response

#### Does not tell you

If you are protected from becoming ill again if exposed to COVID-19, or how long protection may last for or if you can infect others

You must still follow social distancing advice



#### NEGATIVE -

It is likely you have not had COVID-19.

However, there is still a chance that you have had COVID-19, but the test has not detected an antibody response.

#### PROCESS

We are following the national guidelines.

All staff **who want to be tested will be tested.**

We are rolling antibody testing out in a phased way.

Each week we contact a different group to open up the antibody testing to more people.

#### CONTACT

If you wish to have an antibody test you should inform your line manager so that they can let you know when the offer becomes available to your employer.

