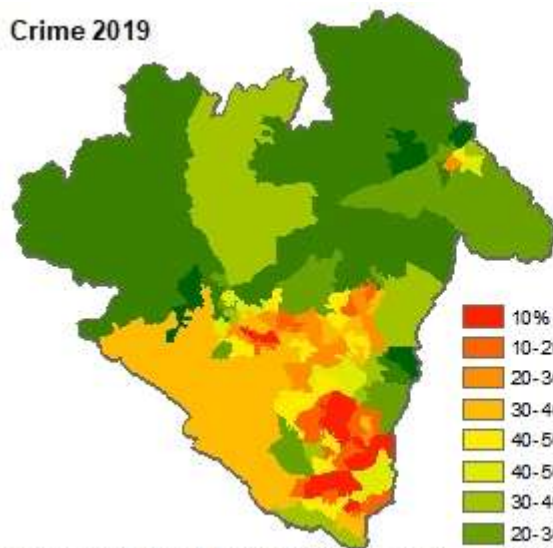
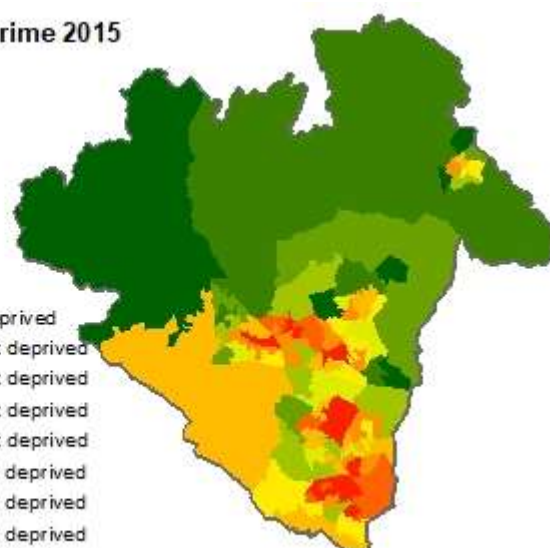


Crime Domain

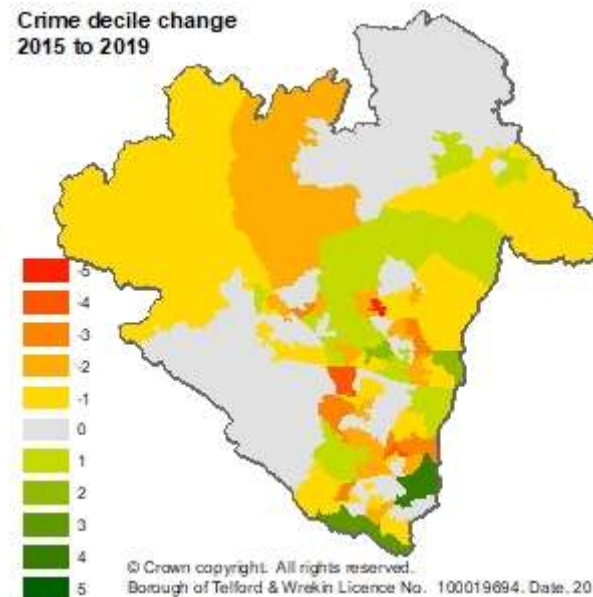
Crime 2019



Crime 2015



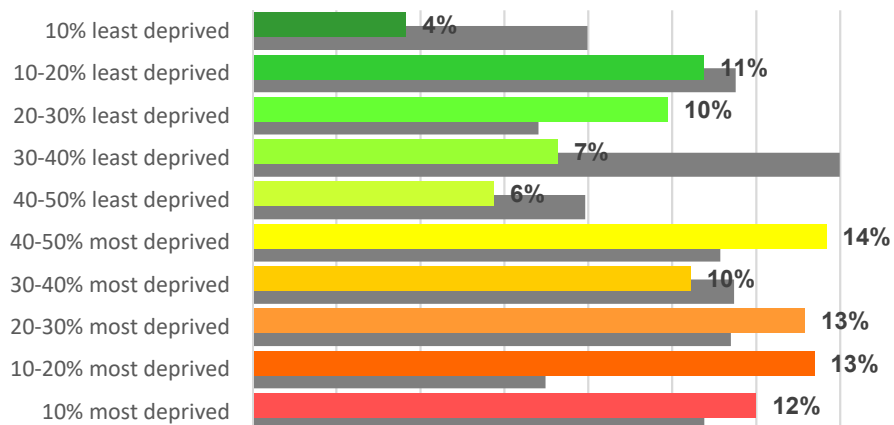
Crime decile change
2015 to 2019



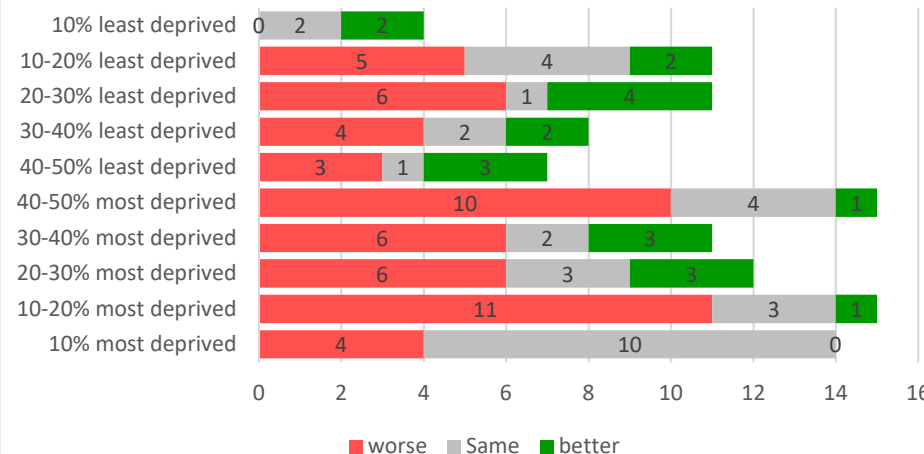
© Crown copyright. All rights reserved. Borough of Telford & Wrekin Licence No. 100019694. Date. 2019

© Crown copyright. All rights reserved. Borough of Telford & Wrekin Licence No. 100019694. Date. 2019

Percentage of population in each decile 2019
(2015 shown in grey)



Decile change since 2015 by current 2019 decile



Crime

Crime is an important feature of deprivation that has major effects on individuals and communities. The Crime domain measures the risk of personal and material victimisation at local level.

Most deprived

- There are 14 areas in Telford and Wrekin ranked in the 10% most deprived nationally (Brookside x2, Madeley & Sutton Hillx2, Woodside x4, Malinslee & Dawley Bank x3, The Nedge x2, College) with a further 15 areas ranked in the 10-20% most deprived.
- A quarter of Telford and Wrekin's population live in areas ranked in the 20% most deprived nationally, with around half of these living in areas ranked in the 10% most deprived.
- The most deprived area in Telford and Wrekin is in Brookside and is ranked 98 of 32,844 areas nationally, placing it in the top 1% deprived areas.

Least deprived

- There are four areas in Telford and Wrekin ranked in the 10% least deprived nationally (Admaston & Bratton, Priorslee, Newport North & West, Edgmond & Ercall Magna) with a further 11 areas in the 10-20% least deprived (Church Aston & Lilleshall, Donnington, Newport North & West, Edgmond & Ercall Magna x2, Admaston & Bratton, Park, Shawburch, Priorslee, Apley Castle, Muxton).
- Some 4% of Telford and Wrekin residents (6,300 people) live in areas ranked in the 10% least deprived nationally with a further 11% (18,500 people) living in areas ranked in the 10-20% least deprived nationally.

Change since 2015

- More than half (55 out of 108) of areas in Telford and Wrekin have seen a worsening of deprivation decile since 2015, with two areas (Ketley & Overdale, Brookside) falling by four deciles and one area in Wrockwardine Wood & Trench falling 5 deciles from 10% least deprived to 40-50% most deprived.
- A total of 21 areas in the Borough have seen an improvement in deprivation decile since 2015 with two areas improving by 2 deciles, one in Ironbridge Gorge improving by 3 deciles and one area in Madeley & Sutton Hill improving across four deciles from 10-20% most deprived to 40-50% least deprived.

Crime Domain

Most deprived LSOAs (in the 20% most deprived nationally)

LSOA code (2011)	Ward	2019			2015			Decile change	Rank change
		Score	Rank	Decile	Score	Rank	Decile		
E01014108	Brookside	2.17	98	1	1.564	599	1	0	-501
E01014118	Madeley & Sutton Hill	1.96	242	1	2.034	98	1	0	144
E01014110	Brookside	1.779	435	1	1.321	1362	1	0	-927
E01014198	Woodside	1.734	506	1	1.072	2822	1	0	-2316
E01014197	Woodside	1.615	758	1	1.35	1258	1	0	-500
E01014165	Malinslee & Dawley Bank	1.551	921	1	1.262	1627	1	0	-706
E01014201	Woodside	1.479	1126	1	0.819	5052	2	-1	-3926
E01014162	Madeley & Sutton Hill	1.423	1,272	1	1.106	2556	1	0	-1284
E01014164	Malinslee & Dawley Bank	1.332	1618	1	1.089	2697	1	0	-1079
E01014200	Woodside	1.293	1,783	1	0.735	5995	2	-1	-4212
E01014109	The Nedge	1.183	2,332	1	0.497	9083	3	-2	-6751
E01014113	College	1.177	2,367	1	1.111	2521	1	0	-154
E01014163	Malinslee & Dawley Bank	1.121	2673	1	1.101	2586	1	0	87
E01014196	The Nedge	1.088	2,882	1	0.271	12367	4	-3	-9485
E01014208	Wrockwardine Wood & Trench	0.98	3,676	2	0.504	8971	3	-1	-5295
E01014166	Malinslee & Dawley Bank	0.966	3,798	2	0.331	11436	4	-2	-7638
E01014159	Madeley & Sutton Hill	0.952	3,913	2	0.67	6754	3	-1	-2841
E01014124	Dawley & Aqueduct	0.948	3,943	2	0.728	6078	2	0	-2135
E01014143	Hadley & Leegomery	0.935	4,074	2	1.107	2550	1	1	1524
E01014120	Dawley & Aqueduct	0.922	4,206	2	0.392	10506	4	-2	-6300
E01014199	Woodside	0.883	4,549	2	0.189	13639	5	-3	-9090
E01014139	Hadley & Leegomery	0.878	4,604	2	0.911	4189	2	0	415
E01014127	Donnington	0.841	5,004	2	0.243	12804	4	-2	-7800
E01014122	Dawley & Aqueduct	0.751	5,932	2	0.428	10035	4	-2	-4103
E01014115	Madeley & Sutton Hill	0.75	5,953	2	0.71	6307	2	0	-354
E01014105	Arleston	0.739	6,067	2	0.547	8380	3	-1	-2313
E01014106	Brookside	0.732	6,152	2	0.462	9544	3	-1	-3392
E01014107	Brookside	0.707	6,432	2	-0.184	19347	6	-4	-12915
E01014195	The Nedge	0.695	6,560	2	0.632	7235	3	-1	-675

2019 Indices of Deprivation

Least deprived LSOAs (In the 20% least deprived)

LSOA code (2011)	Ward	2019			2015			Decile change	Rank change
		Score	Rank	Decile	Score	Rank	Decile		
E01014203	Admaston & Bratton	-1.169	30,290	10	-1.043	29696	10	0	594
E01014181	Priorslee	-1.348	31,216	10	-0.687	26255	8	2	4961
E01014174	Newport North & West	-1.36	31,273	10	-1.553	32139	10	0	-866
E01014132	Edgmond & Ercall Magna	-1.588	32,028	10	-0.993	29313	9	1	2715
E01014111	Church Aston & Lilleshall	-0.709	26,316	9	-0.462	23370	8	1	2946
E01014128	Donnington	-0.731	26,593	9	-1.021	29534	9	0	-2941
E01014177	Newport North & West	-0.74	26,683	9	-1.028	29583	10	-1	-2900
E01014131	Edgmond & Ercall Magna	-0.747	26,752	9	-0.996	29339	9	0	-2587
E01014204	Admaston & Bratton	-0.798	27,283	9	-1.26	31119	10	-1	-3836
E01014179	Park	-0.799	27,292	9	-0.852	28025	9	0	-733
E01014136	Edgmond & Ercall Magna	-0.849	27,778	9	-1.13	30364	10	-1	-2586
E01014190	Shawburch	-0.866	27,943	9	-0.594	25109	8	1	2834
E01014182	Priorslee	-0.975	28,885	9	-1.376	31610	10	-1	-2725
E01014102	Apley Castle	-0.986	28,970	9	-0.922	28688	9	0	282
E01014170	Muxton	-1.002	29,107	9	-1.396	31670	10	-1	-2563