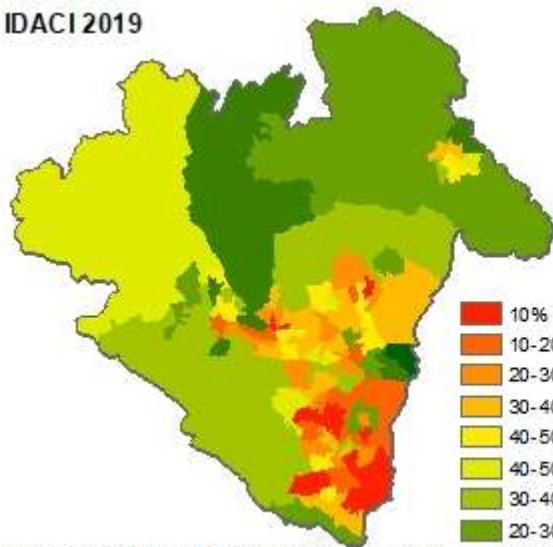
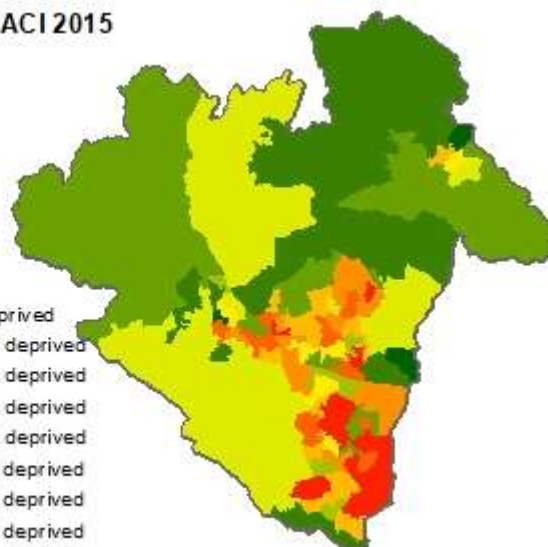


# Income Deprivation Affecting Children Index

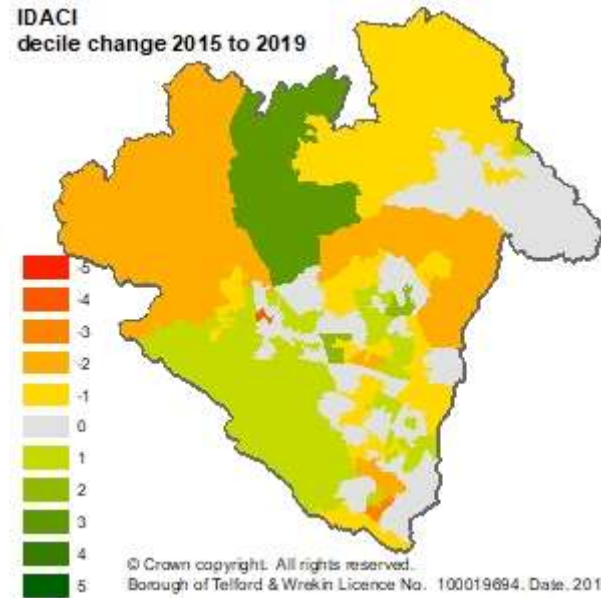
IDACI 2019



IDACI 2015



IDACI decile change 2015 to 2019

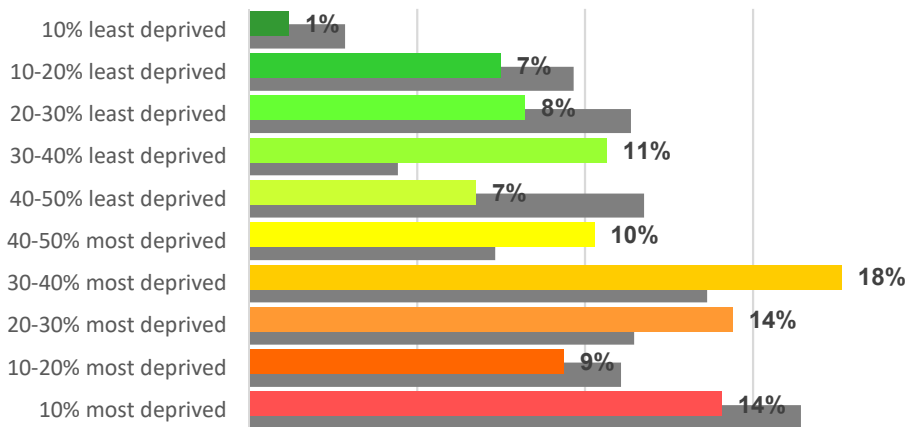


- 10% most deprived
- 10-20% most deprived
- 20-30% most deprived
- 30-40% most deprived
- 40-50% most deprived
- 40-50% least deprived
- 30-40% least deprived
- 20-30% least deprived
- 10-20% least deprived
- 10% least deprived

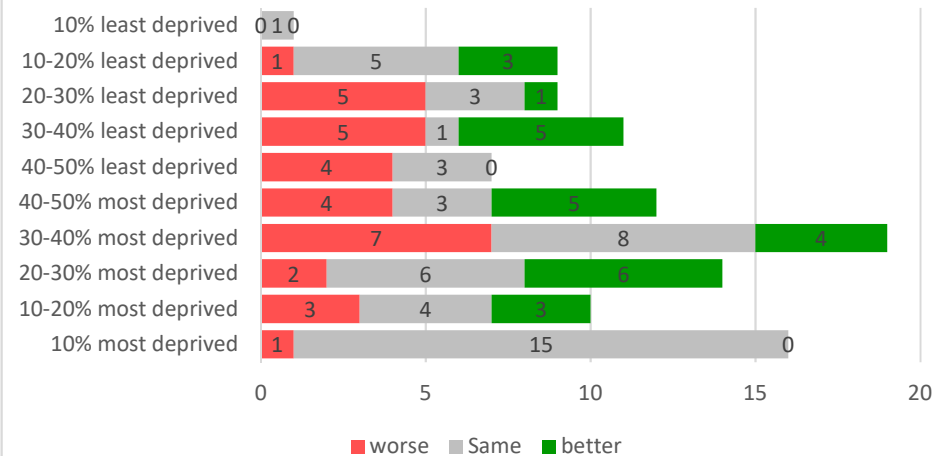
© Crown copyright. All rights reserved. Borough of Telford & Wrekin Licence No. 100019694. Date: 2019

© Crown copyright. All rights reserved. Borough of Telford & Wrekin Licence No. 100019694. Date: 2019

Percentage of children (0-15) in each decile 2019  
(2015 shown in grey)



Decile change since 2015 by current 2019 decile



# Income Deprivation Affecting Children

The Income Deprivation Affecting Children Index is the proportion of all children aged 0 to 15 living in income deprived households.

## Most deprived

- There are 16 areas in Telford and Wrekin ranked in the 10% most deprived nationally (Malinslee & Dawley Bank x2, Brookside x2, Madeley & Sutton Hill x3, Woodside x5, The Nedge, Donnington, Hadley & Leegomery, Dawley & Aqueduct) , with a further ten areas ranked in the 10-20% most deprived (Donnington, The Nedge x3, St Georges, Dawley & Aqueduct, College, Malinslee & Dawley Bank, Madeley & Sutton Hill, Haygate).
- Some 19% of Telford and Wrekin's children live in areas ranked in the 10% most deprived nationally, with a further 9% living in areas ranked 10-20% most deprived.
- There are four areas in Telford and Wrekin (Malinslee & Dawley Bank, Brookside x2, Madeley & Sutton Hill) where more than half of children are estimated to live in income deprivation.
- The most deprived area in Telford and Wrekin is in Malinslee & Dawley Bank and is ranked 171 of 32,844 areas nationally.

## Least deprived

- Just one area in the Borough (Priorslee) ranked in the 10% least deprived nationally with a further 9 areas in the 10-20% least deprived (Newport North & West, Newport South & East, Priorslee, Apley Castle x2, Ercall, College, Edgmond & Ercall Magna, Shawbirch).
- Some 8% of Telford & Wrekin's population (54%, 3,900 people) live in areas ranked in the 20% most deprived, with 1,000 of these living in areas in the 10% most deprived.

## Change since 2015

- A total of 32 areas in Telford & Wrekin have seen a worsening of decile since 2015 with one area in Park worsening by four deciles from 10% **least** deprived to 40-50% **least** deprived.
- A total of 27 areas in the Borough have seen an improvement in deprivation decile since 2015. One area in Edgmond & Ercall Magna has seen an improvement of 3 deciles from 40-50% least deprived to 10-20% least deprived. A further three areas have improved by two deciles.

# Income Deprivation Affecting Children

Most deprived LSOAs

LSOA code (2011)	Ward	2019			2015			Decile change	Rank change
		Score	Rank	Decile	Score	Rank	Decile		
E01014163	Malinslee & Dawley Bank	0.535	171	1	0.524	520	1	0	-349
E01014108	Brookside	0.522	223	1	0.594	162	1	0	61
E01014115	Madeley & Sutton Hill	0.513	260	1	0.5	783	1	0	-523
E01014110	Brookside	0.504	296	1	0.668	47	1	0	249
E01014201	Woodside	0.495	352	1	0.611	119	1	0	233
E01014200	Woodside	0.479	438	1	0.591	167	1	0	271
E01014198	Woodside	0.473	494	1	0.527	508	1	0	-14
E01014118	Madeley & Sutton Hill	0.471	507	1	0.623	92	1	0	415
E01014197	Woodside	0.455	641	1	0.549	353	1	0	288
E01014193	The Nedge	0.402	1,435	1	0.395	2,977	1	0	-1542
E01014127	Donnington	0.384	1,778	1	0.398	2,897	1	0	-1119
E01014142	Hadley & Leegomery	0.377	1,924	1	0.498	813	1	0	1111
E01014164	Malinslee & Dawley Bank	0.357	2420	1	0.398	2,894	1	0	-474
E01014124	Dawley & Aqueduct	0.342	2,845	1	0.333	5,257	2	-1	-2412
E01014116	Madeley & Sutton Hill	0.336	3,036	1	0.45	1,605	1	0	1431
E01014199	Woodside	0.333	3,159	1	0.453	1,562	1	0	1597
E01014125	Donnington	0.329	3,301	2	0.317	5,944	2	0	-2643
E01014196	The Nedge	0.324	3,472	2	0.392	3,071	1	1	401
E01014185	St Georges	0.308	4,089	2	0.394	3,037	1	1	1052
E01014120	Dawley & Aqueduct	0.294	4,659	2	0.363	4,092	2	0	567
E01014113	College	0.292	4,756	2	0.302	6,564	2	0	-1808
E01014165	Malinslee & Dawley Bank	0.287	5,005	2	0.391	3,126	1	1	1879
E01014162	Madeley & Sutton Hill	0.286	5,027	2	0.222	10,984	4	-2	-5957
E01014191	The Nedge	0.278	5,432	2	0.302	6,581	3	-1	-1149
E01014144	Haygate	0.273	5,667	2	0.332	5,260	2	0	407
E01014192	The Nedge	0.264	6,147	2	0.293	7,003	3	-1	-856

## 2019 Indices of Deprivation

### Least deprived LSOAs

LSOA code (2011)	Ward	2019			2015			Decile change	Rank change
		Score	Rank	Decile	Score	Rank	Decile		
E01014181	Priorslee	0.028	30,910	10	0.038	30,326	10	0	584
E01014174	Newport North & West	0.038	29,445	9	0.038	30,208	10	-1	-763
E01014172	Newport South & East	0.042	28,729	9	0.077	24,355	8	1	4374
E01014182	Priorslee	0.043	28,543	9	0.044	29,390	9	0	-847
E01014103	Apley Castle	0.045	28,284	9	0.056	27,611	9	0	673
E01014102	Apley Castle	0.046	28,033	9	0.05	28,606	9	0	-573
E01014134	Ercall	0.046	27,994	9	0.062	26,617	9	0	1377
E01014114	College	0.047	27,923	9	0.066	25,899	8	1	2024
E01014135	Edgmond & Ercall Magna	0.054	26,697	9	0.12	18,991	6	3	7706
E01014190	Shawbirch	0.054	26,649	9	0.06	26,890	9	0	-241