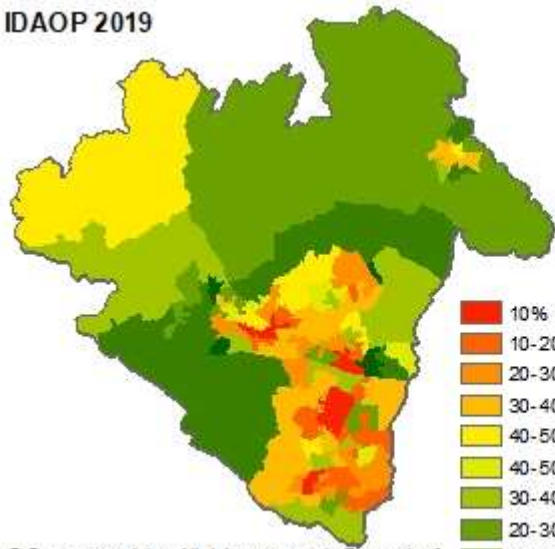
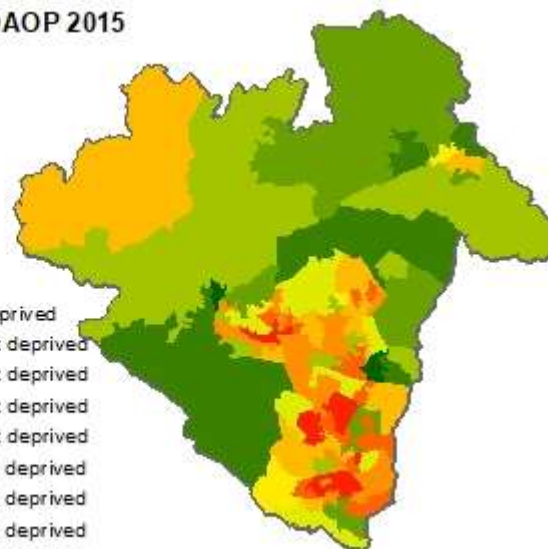


Income Deprivation Affecting Older People Index

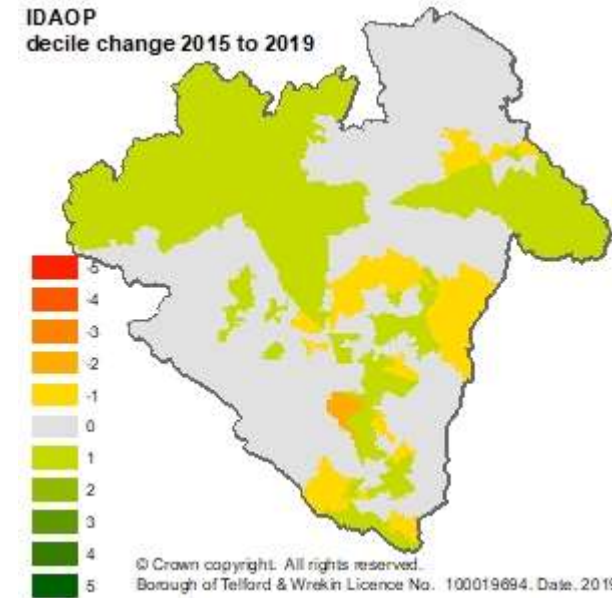
IDAOP 2019



IDAOP 2015



IDAOP decile change 2015 to 2019

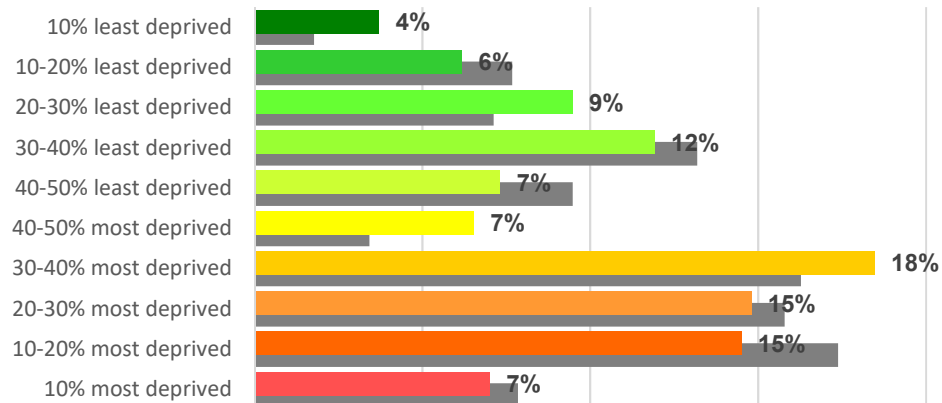


- 10% most deprived
- 10-20% most deprived
- 20-30% most deprived
- 30-40% most deprived
- 40-50% most deprived
- 40-50% least deprived
- 30-40% least deprived
- 20-30% least deprived
- 10-20% least deprived
- 10% least deprived

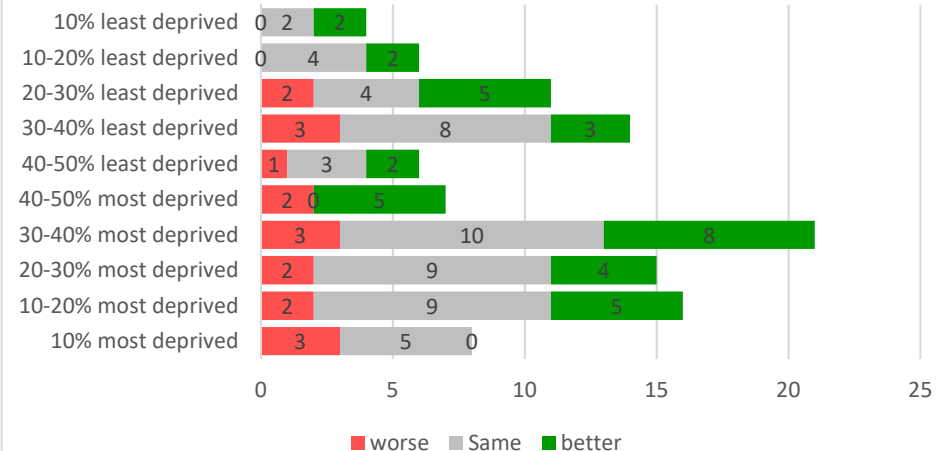
© Crown copyright. All rights reserved. Borough of Telford & Wrekin Licence No. 100019694. Date. 2019

© Crown copyright. All rights reserved. Borough of Telford & Wrekin Licence No. 100019694. Date. 2019

Percentage of older people in each decile 2019
(2015 shown in grey)



Decile change since 2015 by current 2019 decile



Income Deprivation Affecting Older People

The Income deprivation Affecting Older People Index is the proportion of all those aged 60 or over who experience income deprivation.

Most deprived

- There are eight areas in Telford and Wrekin ranked in the 10% most deprived nationally (College, Malinslee & Dawley Bank x3, Hadley & Leegomery, Woodside x2, Oakengates & Ketley Bank) , with a further 16 areas ranked in the 10-20% most deprived (Woodside, Madeley & Sutton Hill x3, St Georges, Dawley & Aqueduct x2, Hadley & Leegomery x2, The Nedge x4, Brookside, Donnington, Arleston)
- Some 5% of Telford and Wrekin's older people live in areas ranked in the 10% most deprived nationally, with a further 13% living in areas ranked 10-20% most deprived.
- The eight areas in Telford and Wrekin ranked in the 10% most deprived nationally have more than a third of older people estimated to live in income deprivation.
- The most deprived area in Telford and Wrekin is in College and is ranked 1,944 of 32,844 areas nationally.

Least deprived

- There are four areas in the Borough ranked in the 10% least deprived nationally (Priorslee, Shawbirch, Ercall, Muxton) with a further six areas ranked in the 10-20% least deprived (Wrockwardine, Priorslee, Apley Castle, Newport North & West, Newport South & East, Church Aston & Lilleshall).
- One in ten older residents (11% aged 60+) live in areas ranked in the 20% least deprived.

Change since 2015

- A total of 18 areas have seen a worsening of decile since 2015 with one area (Horsehay & Lightmoor) worsening by two deciles from 40-50% least deprived to 30-40% most deprived.
- Some 36 areas in Telford & Wrekin saw an improvement in deprivation decile since 2015, this improvement was seen across all deciles.

Income Deprivation Affecting Older People

Most deprived LSOAs

LSOA code (2011)	Ward	2019			2015			Decile change	Rank change
		Score	Rank	Decile	Score	Rank	Decile		
E01014113	College	0.397	1,944	1	0.385	2,830	1	0	-886
E01014163	Malinslee & Dawley Bank	0.37	2552	1	0.393	2,607	1	0	-55
E01014142	Hadley & Leegomery	0.365	2,661	1	0.39	2,673	1	0	-12
E01014200	Woodside	0.356	2,889	1	0.33	4,596	2	-1	-1707
E01014198	Woodside	0.35	3035	1	0.413	2,165	1	0	870
E01014151	Oakengates & Ketley Bank	0.349	3,054	1	0.351	3,812	2	-1	-758
E01014164	Malinslee & Dawley Bank	0.348	3083	1	0.363	3,463	2	-1	-380
E01014165	Malinslee & Dawley Bank	0.345	3,158	1	0.392	2,624	1	0	534
E01014197	Woodside	0.337	3,395	2	0.37	3,229	1	1	166
E01014162	Madeley & Sutton Hill	0.331	3,582	2	0.387	2,768	1	1	814
E01014185	St Georges	0.328	3,674	2	0.357	3,635	2	0	39
E01014120	Dawley & Aqueduct	0.326	3,729	2	0.369	3,273	1	1	456
E01014139	Hadley & Leegomery	0.301	4,658	2	0.275	7,034	3	-1	-2376
E01014196	The Nedge	0.3	4,686	2	0.343	4,115	2	0	571
E01014191	The Nedge	0.297	4,801	2	0.289	6,367	2	0	-1566
E01014124	Dawley & Aqueduct	0.295	4,875	2	0.379	2,980	1	1	1895
E01014194	The Nedge	0.287	5,186	2	0.363	3,479	2	0	1707
E01014108	Brookside	0.285	5260	2	0.388	2,735	1	1	2525
E01014193	The Nedge	0.284	5,324	2	0.32	5,033	2	0	291
E01014125	Donnington	0.281	5,453	2	0.313	5,280	2	0	173
E01014143	Hadley & Leegomery	0.275	5,703	2	0.317	5,145	2	0	558
E01014118	Madeley & Sutton Hill	0.273	5782	2	0.304	5,705	2	0	77
E01014105	Arlleston	0.262	6,298	2	0.27	7,276	3	-1	-978
E01014115	Madeley & Sutton Hill	0.257	6,545	2	0.292	6,236	2	0	309

Least deprived LSOAs

LSOA code (2011)	Ward	2019			2015			Decile change	Rank change
		Score	Rank	Decile	Score	Rank	Decile		
E01014183	Priorslee	0.029	32,032	10	0.054	30172	10	0	1860
E01014190	Shawbirch	0.035	31,438	10	0.045	31297	10	0	141
E01014134	Ercall	0.04	30,792	10	0.068	28021	9	1	2771
E01014168	Muxton	0.043	30,358	10	0.068	28062	9	1	2296
E01014202	Wrockwardine	0.051	28,963	9	0.062	28982	9	0	-19
E01014182	Priorslee	0.058	27,636	9	0.068	28097	9	0	-461
E01014174	Newport North & West	0.059	27,431	9	0.073	27223	9	0	208
E01014102	Apley Castle	0.059	27,303	9	0.084	25290	8	1	2,013
E01014111	Church Aston & Lilleshall	0.06	27,121	9	0.078	26389	9	0	732
E01014176	Newport South & East	0.06	27,117	9	0.088	24637	8	1	2480