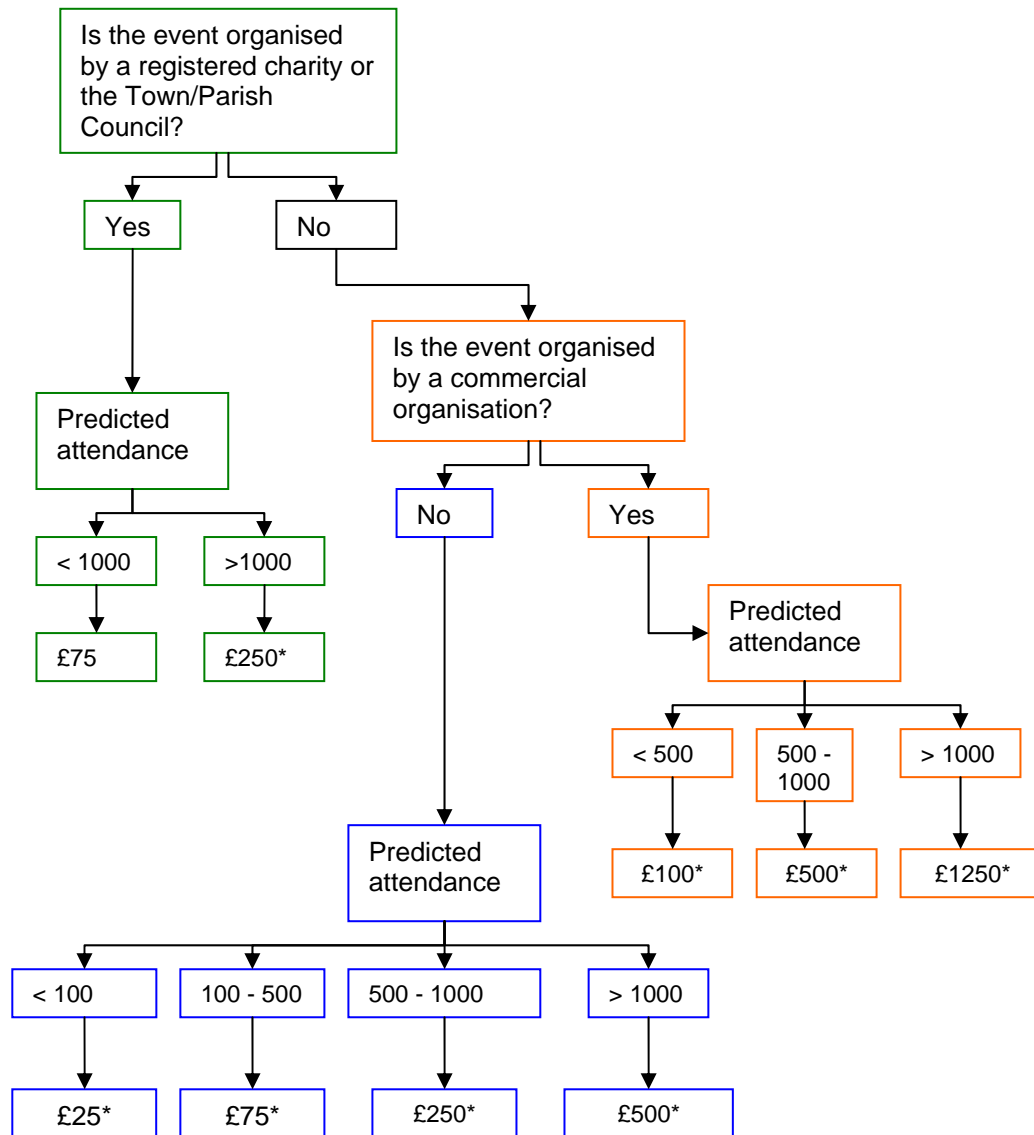


Applications for Road Closures: Minimum Charges



Examples

- Applications from Registered Charities or Town/Parish Councils**
 £75 Village Fetes; small Christmas light events
 £250* Town Council organised carnival attracting over 1000 visitors; large Christmas light events

- Applications from all other non-commercial event organisers**
 £25 Street Parties
 £75 Fetes not organised by charities or parishes
 £250 Parade attracting between 500 and 1000 people
 £500 Sporting events (over 1000 spectators)

- Applications from commercial organisations**
 £100 Open day organised by local business
 £500 One-off commercial open air market
 £1250 Events attracting very high levels of traffic from outside the local area

Closures for Remembrance Day parades will be free of charge if the application comes from the Town or Parish Council and is received before 19th August.

*This represents the minimum charge. If the event involves complex road closures or is judged to have a major impact on the road network there may be additional charges. For events attracting over 1000 people these charges could be substantial.