

Talking

NEWSLETTER

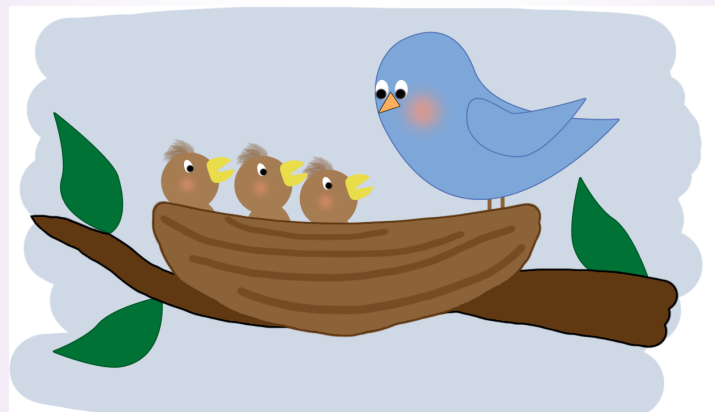
Early Years and Childcare

Well hello



goodbye

Winter



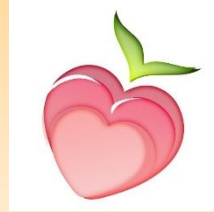
What a term....

Yet again it has been a very interesting term in many ways, with more new ways of living and working which has proved to be stressful, challenging and a massive learning curve for us all. I know many find it an extremely worrying time but we are amazed by how resilient our Early Years Sector is and how you have managed to move with the times and embrace the changes we have faced.

We have had more lovely stories about how you have managed during this time and invited you to share those stories with us along with any talking points you may have or topics you would like to share or get peers to join in with we firmly believe in encouraging collaboration and supporting each other as a sector.

Again you have faced many challenges and embraced them with amazing resilience, this just shows how diverse and strong you all are!!

Your stories



Community Fridge



Halesfield Day Nursery has teamed up with local **counsellor** Jackie Loveridge, Madeley Council and the Food Share project to set up and install a community fridge at the nursery.

The fridge was funded by Jackie Loveridge and match funded by Madeley Council and sits in the nursery foyer. It is stocked with food from the Food Share project located at Rampart Way, Telford.

The fridge is loaded with produce **that is** surplus and would usually end up being thrown away. Everyone is welcome to use the fridge as it is there for the community. Helen Childs, nursery manager says “the fridge has been great for the nursery, it has helped us reach out to families in need as we can provide them with food regularly thus making sure no one goes hungry or struggles. We also love the fact that we are

stopping food from going to waste, so we are able to protect the environment whilst helping those in need too”

The nursery asks for money donations (where possible) which are then fed back into the Food Share scheme. So far, the nursery has raised over £500 for the project, **helped** many local families, and saved over half a tonne of food from being wasted. This is such a fantastic venture for all involved, hopefully we will be seeing a few more of these fridges popping up soon.

Your stories

Spreading a little joy at Christmas



Lavern, Sheridan and Phabian Mthethwa with their hamper of Christmas goodies

A Telford school was able to provide its pupils and their families with a Christmas hamper thanks to the local council.

The incredible generosity of Hadley and Leegomery Parish Council allowed Millbrook Primary School and Nursery to provide every family within the school a food hamper during this holiday season.

The school were keen to find a way of saying thank you for all the support the community has provided since starting back in September and hope the hamper will provide the families with food essentials and tasty treats to brighten the end of a very difficult year.

Kirsty Parkes, headteacher, said: "We know this year has been extremely challenging and that some of our families have faced unexpected hardships. As a school, we have felt a sense of responsibility to support those who have been affected by this terrible pandemic within our community."

Families were provided with a range of store cupboard essentials – which were sourced from Community Fareshare (as part of a programme of ongoing support for the community), Morrison's Wellington and Aldi Donnington – as well as treats for the children and a gift to bring some fun and laughter to everyone during the festive period.

Your stories

“It is with great sadness Val Price Kids 4 Us Proprietor has decided to hang up her keys and will be retiring.

Val has been in the childcare profession for 40 years where she started off as a well-known childminder in our local Madeley area. Val wasn't very good at saying no to families and her home was bursting at the seams, so this is when she decided to open Kids 4 Us Nursery/ After School Club in 1998.

She has looked after lots of children during this time and some of those children are now bringing their children to our Nursery/Kid's club. Val helped a lot of staff to gain a career at kids 4 us who still remain loyal to this day, this reflects on how respected Val is as a person and how much she loves her job. Val is going to miss working with the children and their families.”



Your stories



Twiggy's Day Nursery new sites @ Sutton Hill and Madeley

"From little acorns, mighty oak trees grow"

After having our Donnington site open for the past 4 years Twiggy's Day Nursery has now expanded its sites to two new settings in Telford which we are excited to introduce below.

Twiggy's Day Nursery - Sutton Hill

After having a nursery on Sutton Hill for 17 years and before that a play group.

It was a great shame for the local community and the families of Sutton Hill that in summer 2020 it closed with all staff unfortunately being made redundant.

This left the families on the estate and surrounding areas without local childcare.

However, we are incredibly pleased to announce that a local provider stepped in and reopened the nursery.

The nursery is now a second site for Twiggy's Day Nursery Donnington.

This has already had a huge impact on families and the community accessing the setting and the nursery cannot wait to increase the reach and impact to the wider community.

Twiggy's at Sutton Hill is also pleased to announce that during their first ever Environmental health inspection the inspector was extremely complementally, and the nursery was graded 5 stars and COVID compliant resulting in our COVID secure status.

The team at Sutton Hill is a mixture of old and new. The new owners and management team having over 30 years' experience in childcare, they have embraced changes over that time and are looking forward to welcoming families new and old it to the setting.

Twiggy's Day Nursery - Madeley

An established nursery in Madeley called Kids 4 us which has been owned and ran by Val Price for over 20 years has now been bought by and joined the Twiggy's day nursery brand as our third site.

Val had decided to retire and sell the nursery which Twiggy's Day Nursery were happy to take over.

The nursery has been bought as a business so the staff team at the setting has remained the same and the T Twiggy's Day Nursery management team look forward to joining and working with them to keep the nursery at its best for the current and future families of the Madeley and surrounding areas.

We would finally like to wish Val a long and happy retirement which she has thoroughly earned. And we look forward to getting to know and supporting all the families who join the Twiggy's Day Nursery home from home settings.

SENCO Level 3

Over the last 6 months twenty five SENCo's have been completing the SENCo Level 3 qualification this has included twenty three SENCo's from Early Years settings and two childminders. They have been on an incredible journey from start to finish with juggling work, home life and home schooling. The training was delivered online via Teams and this was a learning curve for all of us.

I would like to say congratulations to each one of you and it has been evident how you have used what you have learnt and embedded this in your settings and have shared good practice and knowledge with your colleagues, Tasha Locklin Early Years and Childcare

Here is some feedback from two SENCo's who have completed the training:

Completing the Level 3 SENCo award course has given me more confidence within my role as SENCo and I'm really glad that I decided to take part in this course albeit online due to the pandemic but with brilliant support from Tasha we all got through it. This course has given me additional guidance and resources which will help me to support my colleagues that have children with SEND in their key groups, It has also given me the chance to meet other SENCo's in the borough whom I can call on for support in the future if needed, Rebecca Ralph - Leegomery Under Fives

When we signed up to do the SENCO level 3 award we never anticipated we would be doing it during a pandemic and national lockdown. Whilst we all would have loved to have done this course in person we have been fortunate to have a fantastic mentor in Tasha. She has supported and guided us throughout the course and we have been fortunate to have a great network of local SENCOs to share ideas with and vent our lockdown frustrations too. It's been a challenge but one we are all very proud to have Accomplished, Katy Humpage—Little Dragons

Mark making

Here is a help sheet to support mark making throughout the setting. Mark making should be available and accessible to children at all times. Resources should be thread through the environment and to embedded into a child's learning it is beneficial to enhance areas of the room with mark making resources. Adult led activities can be an extension to learning but must not be the only experience of mark making for the children.

“In an emotionally secure environment, where their creativity is valued and respected, children will often become prolific mark makers. This is particularly true when the purpose and the means of representation are within their control.” (National strategies, 2008)

Further reading on the importance of mark making can be found here




[https://www.foundationyears.org.uk/wp-content/uploads/2011/10/](https://www.foundationyears.org.uk/wp-content/uploads/2011/10/Mark_Marking_Matters.pdf)

[Mark Marking Matters.pdf](#)

<https://www.pacey.org.uk/mark-making/>

Continuous provision – Mark making



Resources	COEL LOOKOUTS			Role play extensions for making marks	
Pens Pencils Crayons Chalks Paints Sand Playdoh Different size brushes Water and containers	Playing and engagement Active learning – Motivation Creating and Thinking Critically – thinking <u>Interactions</u> <ul style="list-style-type: none"> ✗ To encourage children to access the area and explore available resources. ✗ To support children as they develop their skills of independence within routines and activities within the area. ✗ To role model the use of resources, safely, correctly and creatively, allowing children to practice and consolidate skills ✗ To role model and introduce children to new vocabulary through a broad range of practical experiences ✗ To support child self-initiated play through positive and challenging interactions, following the child's lead 	<u>Pirates</u> Map making Ransom posters Flag making Ship log book <u>Drive through</u> Menus/order forms Number plates Car park spaces		<u>Builders yard</u> Measurements Plans Equipment lists Jobs to complete <u>Garage</u> MOT certificates Repair list Sequence of photos to show servicing a bike/car	
<u>Enhancements</u> Cotton buds Sponges Stones Sticks Food(printing) Shaving foam Gloop					

What adults might say ... Tell me about? What happens if?



Talking Points!

Let's think
together



We want your input!!

Tell us what you want?

- We haven't received any talking points this month, please send in your ideas.
- Please tell us what network meeting themes you would like to cover.
- Is there any specific training you would like to be targeted?
- Do you have any compliments or complaints?
- What have you learnt from the pandemic?

Funding

- Planning your Summer Term funding, we advise that it should be business as usual
- The DfE have not confirmed the status of funding for Summer, guidance will be shared once it is published.
- Check with parents if their school is deferring reception entry, or if they are choosing to themselves. They will need to speak to School Admissions to ensure they do not lose their school place.
- Portal opens for Summer actuals week commencing .



Portal

- Codes must still be valid and up to date
To access for the first time in Summer codes must have been applied for before 31 March 2021!!
Existing codes must be updated before the end date!!!
- All data items must be completed
- Childcare Sufficiency MUST be completed termly
- EYPP now shows on the portal as EYDP since the budget change
- It is your responsibility to ensure your data submission is correct, we **DO NOT** know who is attending your setting
- **Data is still not being completed correctly or missed off**
- All incomplete or incorrect submissions will now be rejected until they have been completed correctly.

Portal

Organisation: Ict Isde Solutions
Provider: Ict Isde Solutions (Full Daycare)

Home Forms **Funding** Sufficiency Images

Summary Estimates **Actuals** Adjustments Eligibility Checker

Child Details Parent / Carer Details **Funding Details** Documents Notes

Child Details

Forename*
Middle Name
Surname*
DOB*
Proof of DOB ☐
Gender* ☐ Male ☐ Female
Preferred Surname
Ethnicity*
SEN COP Stage

Address

Address Line 1*
Address Line 2
Address Line 3
Locality
Town
County
Postcode*

Save Cancel *denotes mandatory fields

You must complete the sections which are **bold**

To enable the system to check your 30 hour codes and EYDP/EYPP you **MUST** complete the parent information and tick the consent boxes. You only need one parents information.

Organisation: Ict Isde Solutions
Provider: Ict Isde Solutions (Full Daycare)

Home Forms **Funding** Sufficiency Images

Summary Estimates **Actuals** Adjustments Eligibility Checker

Child Details Parent / Carer Details **Funding Details** Documents Notes

Entering Parent/Carer details enables us to check whether the child is eligible for Early Years Pupil Premium (EYPP) funding, and whether the child is eligible for extended hours.

Please ensure you input details for all records that have given their permission to do so, as this ensures you receive the additional funding. Please also ensure that the correct consent boxes are selected as per the usage of the details.

Details are optional but if entered then at least Forename, Surname and NI or NASS Number must be filled in.

Parent / Carer Details

Forename
Surname
DOB
☐ NI or ☐ NASS Number
Tick to give consent to Eligibility Checking for ☐ EYPP ☐ 30H

Partner Details

Forename
Surname
DOB
☐ NI or ☐ NASS Number
Tick to give consent to Eligibility Checking for ☐ EYPP ☐ 30H

Save Cancel *denotes mandatory fields

You **MUST** tick the following

Present during census
Nominated for DAF

If you DO NOT tick attends 2 or more days it will not allow you to put more than 10 hours in the system.

Summary Estimates **Actuals** Adjustments Eligibility Checker

Child Details Parent / Carer Details **Funding Details** Documents Notes

Funding Details

Start Date*
End Date*
Default Term Dates
Weeks Attended in Term*
Present during Census ☐
Attends Two Days or More ☐
Nominated for DAF* ☐ Yes ☐ No
Universal Funded Hours per Week
Universal Hours*
Extended Funded Hours per Week
Extended Hours*
30H Eligibility Code
30 Hours Free Childcare
Eligible for 30H ☐
Total Funded Hours per Week
Total Funded:

Attendance Days

Attends Monday* ☐ Yes ☐ No
Attends Tuesday* ☐ Yes ☐ No
Attends Wednesday* ☐ Yes ☐ No
Attends Thursday* ☐ Yes ☐ No
Attends Friday* ☐ Yes ☐ No
Attends Saturday* ☐ Yes ☐ No
Attends Sunday* ☐ Yes ☐ No

Non-Funded Hours per Week

Non-Funded Hours*
If this child attends another setting as well as yours, be sure to enter the hours as per what has been agreed with the child's parent/carer

Maximum Values Allowed:

Number of Weeks: 12.00
Universal Weekly Hours: 10
Universal Termly Hours: 140
Universal Yearly Hours: 380
Extended Weekly Hours: 10
Extended Termly Hours: 140
Extended Yearly Hours: 380

Save Cancel *denotes mandatory fields

All of this information is in the Help Guide which you have all been issued with , please use this guide it was created to support you.

If you need it sending out again, please let us know.

Welcome!!!

A warm welcome to our new settings and
childminders



Claire Carroll

Rachel Butler

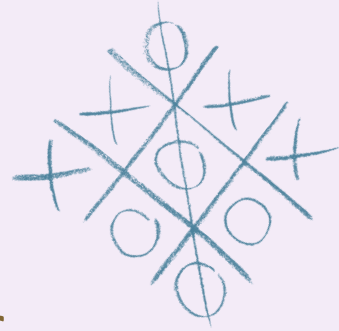
Leigh Brownlow

Kim Wood

Sarah Passey

Congratulations!!!!

Congratulations to each and everyone of you who has managed yet again to deal with the continuing changes with Early Years which has been ever more prevalent this year.



Your willingness to support your customers and the local community has been outstanding.

We are sure there is still a long road ahead of us but we know you will step up.

Thank you to you all



We will report on Ofsted reports sometime in the future

If we haven't included you in this page due to overlapping of the newsletter being sent and the publication of your report, we promise to include you in the next issue!

Why become one of our Network Childminders?

Childminders who choose to become members of the Network will need to be able to demonstrate that they are meeting the requirements of the regulatory body and those set out in the Talking Childminder Network Quality Improvement Principles which are:

- Professional Childminder
- Leadership and Management
- Quality Learning and Teaching
- Safeguarding and Welfare
- Excellent Outcomes for children

The Network aims to make sure that the standard of childcare you offer is consistently of the highest quality and is reviewed regularly.



Most of all Parents/carers will be reassured that you are visited regularly and are part of the Quality Improvement Network.

Contact us on **01952 385424**
or email talkingchildminders@telford.gov.uk

www.telford.gov.uk/talkingchildminders



Telford & Wrekin
COUNCIL

We will...

- Help you to complete an initial assessment of your practice.
- Visit you at least 3 times every year to assess and monitor your practice. One of these visits will be unannounced.
- Offer ongoing support, advice and challenge to your practice not only at visits but via telephone, text and e mail.
- Complete a reflective annual review of your practice which includes feedback from children, parents/carers and professionals and set targets for the next 12 months.
- Expect you to commit to a minimum of 18 hours Continued Professional development each year.
- Provide promotional materials and enhanced promotion via the Talking Childcare website.

You will...

- Be able to attend Weekly Drop-in sessions where you can discuss matters with a co-ordinator and a network of peers. The Drop-in will provide the children in your care an opportunity to socialise and benefit from the learning rich environment.
- Offer peer support to new childminders.
- Have termly Network meetings to update you on regulatory changes, national and local initiatives.
- Get reduced rate PL insurance. Full members only (Pacey).
- Be able to provide specialist services such as respite care.
- Receive a pass to enter the Ironbridge Gorge Museum sites at a much reduced rate.
- Be able to promote yourself as a Network Childminder in any promotional marketing.

Contact us on: **01952 385424** or
email: talkingchildminders@telford.gov.uk

Training

New Schedule
Summer 2021
is now
available [here](#)

Email details:

For all funding enquiries please use
childcarefunding@telford.gov.uk

For all training/general enquiries please
use

talkingchildcare@telford.gov.uk

For all childminder enquiries please use

talkingchildminders@telford.gov.uk

SEND request for involvement please use

EarlyYearsSENDsupport@telford.gov.uk

Please do not forget the new request for
involvement form and the new e mail ad-
dress to send these to

EarlyYearsSENDsupport@telford.gov.uk

You can also access via this link [here](#)

Local Offer for Special Educational Needs and Disability

Discover everything you need to know about education,
health and care services in your local area for children and
young people with SEND 0-25yrs at...

www.telfordsend.org.uk

SEND



Training

Our new Summer schedule is ready but in the meantime have you seen our latest events this term? All sessions and workshops are currently delivered on Microsoft Teams or Zoom?

REVISED EYFS BRIEFINGS—Free to Telford & Wrekin Providers, £10 for Out of Area

- 18 March—10.00am, 1.00pm, 4.00pm and 6.30pm
- 20 March—10.00am

Bespoke Training

- Supporting children's learning through daily routines, practice and learning opportunities—9 March 2021 6.30pm £20 pp
- Creating a Magical Curriculum: Inspiring Awe & Wonder—13 March 9.30am or 16 March 6.00pm £25pp
- Intent, Implementation and Impact in the Early Years with Helen Moylett—25 March 6.30pm £30pp

The Early Years Practitioners Bag of Tricks

Early Years Practitioners Bag of Tricks!

As all children are coming back to your settings here are some usual ideas to help them settle in and adjust to the daily routine. These are resources all Early Years practitioners should have at hand to support children with their communication, understanding and their Personal, Social, Emotional Development. These resources will form part of the settings 'graduated response' at a universal offer level.

Objects of Reference for the daily routine. Keep them in a basket so they are easily at hand.

Visuals to for 'Good sitting' 'Good looking' 'Good listening'

Now/Next or First/Then boards.

Song bags with objects which relate to the songs. This should also include number rhymes.

Visuals of real life objects/areas to support transitions.

Visual timeline of the daily routine. Take away the completed activities.

Emotion visuals, puppets, mirror play to support children to understand simple emotions.

Box of fiddle objects.

Join children's play, provide a simple running commentary and keep questions to a minimum

Use Makaton where possible and when singing songs.

Children's Health and Wellbeing



We all know the COVID pandemic has had an impact on our health and wellbeing and this is the same for our children and young people of all ages.

With increased sedentary behaviour amongst children due to national lock downs and less opportunities to be out and active we are seeing an increase in the rates of excess weight and obesity for our children locally. Here are some of the resources that support children and families to be active safely, and eat healthy, but if you would like to know of more out there for health and wellbeing please sign up to the Healthy Telford newsletter

<https://healthytelford.com/subscribe-to-blog/>

- A Free Active Families digital resource supporting activity and healthy eating where you and families can share your challenge with us using the hashtags #ActiveFamiliesSTW and #LetsGetTelfordActive on Facebook and Twitter https://www.energizestw.org.uk/activefamilies-2021?fbclid=IwAR3xj7bRm9KLL2JI535ooMZ5Xhy7wf_2TkTUVJA1JcdFM_Z8-gfgs4upANQ

- Change4life's Cook Together YouTube channel is a great way to support healthy home cooking with children https://www.youtube.com/watch?v=bKRacmtKka8&list=PLXbfii574m_jCD8GuoYtudOv__X25ilib

- The Daily Mile is a great way to get children moving, to run or walk for 15 minutes supports them to meet their 60 minutes of physical activity as recommended by the Chief Medical officers. We currently have 19 Early Years settings signed up to the Daily Mile, has your setting joined the Daily Mile yet? <https://thedailymile.co.uk/>

We are bringing together a group of professionals to tackle childhood excess weight and obesity locally. The aim of this group is to identify what could be creating the barriers for families to choose healthy behaviours.

We would welcome representatives from Early Years who are working with parents daily in developing solutions to these barriers to support healthy behaviour changes. If this is something you have an interest in and would like more information please contact me by email at mandy.sznober@telford.gov.uk

Have you received your banners?

Let us know if you haven't

The banner features a white background on the left with the text 'Talking Early & Years Childcare' in a mix of blue and red fonts. Below this is a red speech bubble containing the same text. To the right is a purple silhouette of a family (mother, father, and two children) standing next to a baby stroller. The right side of the banner has a solid purple background with white text.

Talking
Early & Years
Childcare

Protect
Care and Invest
to create a
better borough

  **Telford & Wrekin**
COUNCIL

Up to 30 hours of free
childcare is available

Are you getting all of the free
childcare your 3 or 4 year old
is entitled to? **Check today.**

tel. **01952 385423**
email. **childcarefunding@telford.gov.uk**

The banner features a white background on the left with the text 'Talking Early & Years Childcare' in a mix of blue and red fonts. Below this is a red speech bubble containing the same text. To the right is a purple silhouette of a family (mother, father, and two children) standing next to a baby stroller. The right side of the banner has a solid purple background with white text.

Talking
Early & Years
Childcare

Protect
Care and Invest
to create a
better borough

  **Telford & Wrekin**
COUNCIL

Free childcare for
eligible 2 year olds
is available here

Don't miss out!

What do you know about Homestart?

H&ME START

home-start.org.uk



Our solution: making early years count

Today, families face more pressures than ever. And the services that could help them are stretched or non-existent.

Without stable homes, young children won't build the foundations they need to thrive as adults. We work alongside parents to help them regain their confidence.

How we do it: Helping parents be the best they can be. There's no judgement, just compassionate, confidential help and expert support. Starting in the home, our approach is as individual as the families we work with.



We are parents supporting parents



Our challenge: childhood can't wait

Home-Start is a local community network of trained volunteers and expert support helping families with young children through challenging times.

That means we're there for parents when they need us most, because childhood can't wait.



'All the homes I've visited have shown me how much parents want to do the very best by their children, it's just sometimes they need extra support to do it.'

Janine, Home-Start volunteer



'If it hadn't been for Home-Start, we would have lost all hope. Every time I think of them, I smile.'

Andrea, mum of seven



13,500
trained volunteers help over
27,000 families build supportive,
loving relationships with
their children

93%
of families feel more
able to cope with their
children's mental health

96%
of families facing
isolation and loneliness
saw an improvement

Helping over
56,000
children thrive



Our future: more help for families

Our work makes a vital difference to hundreds of communities right across the UK. The work of our volunteers has never been more urgent and important.

We need to raise more money now to:



Influence more
decision-makers
across the UK



Recruit more
amazing volunteers
to support families



Share our local
expertise to drive
national change

Because childhood can't wait

Home-Start UK. A charitable company limited by guarantee. Charity no 10 England and Wales 1108911 and in Scotland 01089112. Company no. 5382125. Registered office: The Colonnade, Long Street, Leicester, LE1 1PL. © Home-Start UK

What do you know about Homestart?



How to make a referral to Home-Start Telford & Wrekin.

Referral Criteria.

- The family must live within the borough of Telford & Wrekin.
- The family must have at least one child under 5, preferably not yet in school.
- There must be an additional vulnerability such as isolation, poverty, bereavement, poor mental or physical health, disability, developmental concerns, multiple birth, teenage parents, domestic violence, addictions etc.

The Referral Process

- In the first instance, please email homestarttelfordandwrekin1@gmail.com to say that you have a family you would like to refer. (Do not include any personal information at this point.)
- We will call you back to discuss the needs of the family and take some basic information. (There may be a short waiting list before we can offer support, we will let you know if that's the case.)
- Once we are ready to take the family, we will send you a referral form and a unique password with which to protect the document in line with our GDPR policy.
- Once you have gained the parent's consent and completed the form and password protected it, you can email it back to us,
- We then contact the family, complete initial paperwork and match them with a volunteer who will provide them with 1-1 emotional and practical support, advice and guidance for 2-3 hours a week.
- We will let you know once the family is matched with a volunteer.

and finally...

The early years and childcare team
are here to support you, no matter how big
or small your challenge