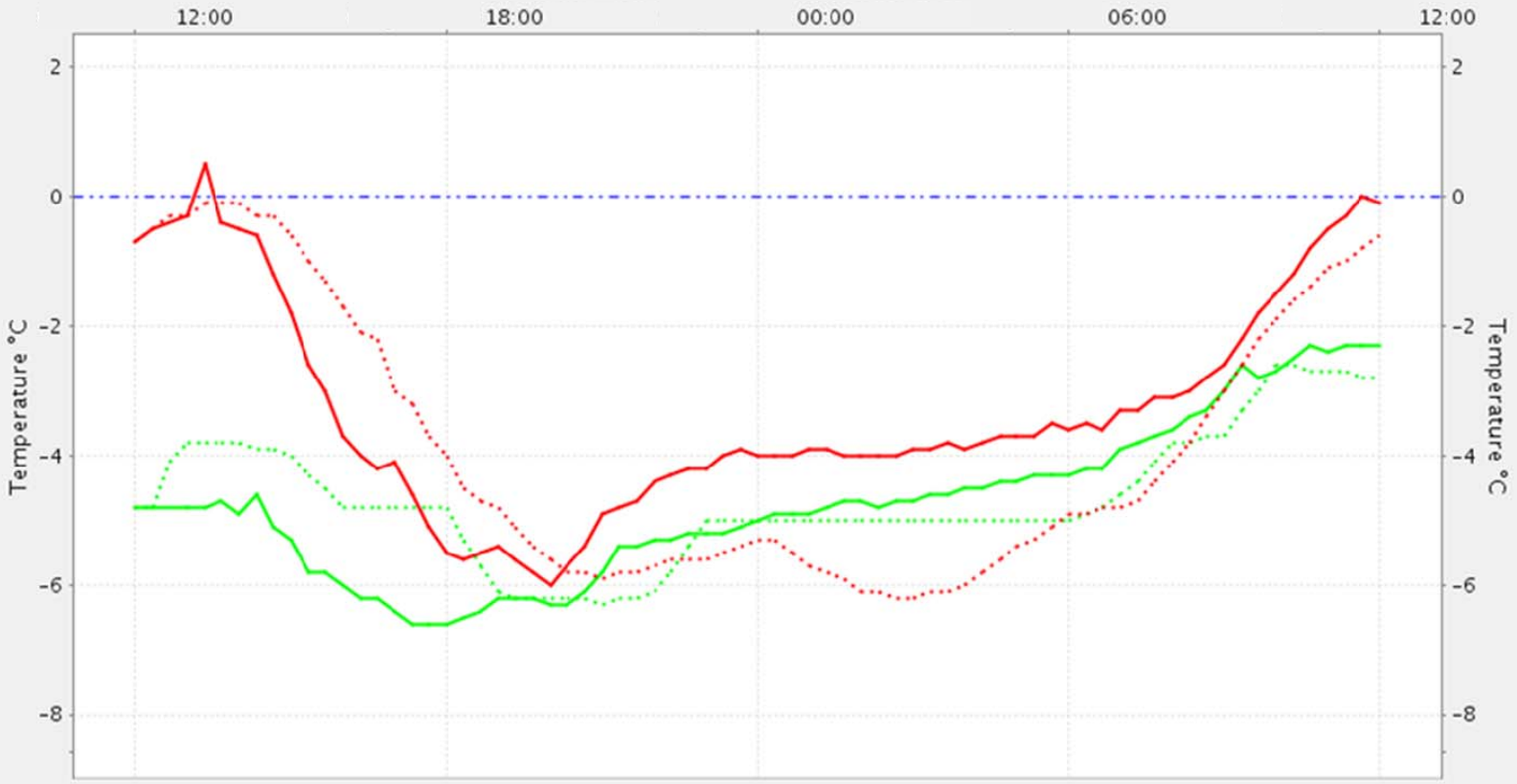


Information from weather monitoring station over a 12 hour period in the middle of winter 2010

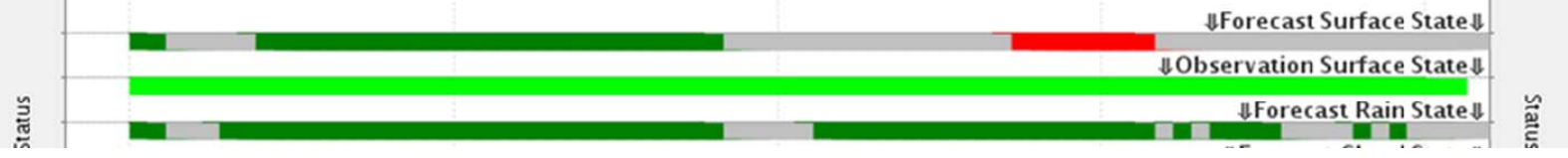
Vaisala IceCast IceNet - road|rail|runway

Observation Forecast Available Tools

IceNet Forecast Graph™ : A5223 Horsehay



- Actual Surface Temperature
- Actual Air Temperature
- ... Predicted Surface Temperature
- ... Predicted Air Temperature



Forecast Surface State Red = Ice

Observation Surface State Light Green = Trace of Salt

Forecast Rain State Green = None Grey = Snow