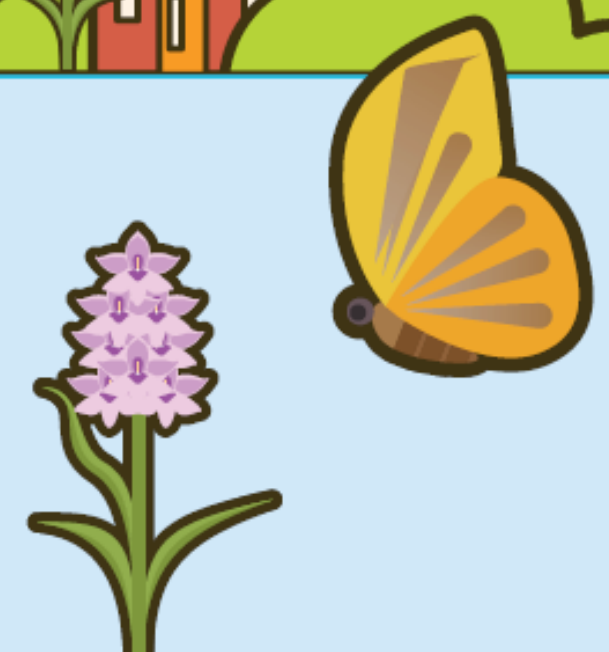




# SPRING INTO SUMMER



## What actions is the Council taking for biodiversity and local people?

Across our Borough Telford & Wrekin Council work with local teams and volunteer groups to care for our green spaces, to support use of open spaces by local people and to protect the variety of biodiversity which we are so lucky to have.

### CAT Team Dawley:

The Dawley Community Actions Team (CAT) work hard within the community ensuring our local environment and neighbourhoods are protected and maintained. The CAT team can be seen on patrol locally and carry out various tasks such as litter picking and maintaining public areas. The team aims to maintain a high quality local environment while allowing biodiversity to flourish in local green spaces.

The CAT teams work closely with Dawley Town Council and the Dawley Friends of group and are a familiar sight to local people.

### Bowring Park:

Bowring Park is a traditional, formal British Park designed to be used by the community for leisure activities such as football, cricket, bowls, tennis or just simply a walk. With its formal bedding schemes and shrub beds it is typical of a park of this type. Recently, however we have been looking to expand the biodiversity potential by creating more buffer zones around the northern margins where grass is left uncut. To bolster the wildflowers, plug plants were incorporated in the spring with help from the Friends of Bowring Park, the aim is to increase the biodiversity value of the park and to provide habitats which can support invertebrate and bird species.

### Carbon emissions:

Telford & Wrekin Council declared a climate emergency in 2019 and our commitment is to be carbon neutral by 2030. We are looking at how we reduce the carbon footprint of our grounds maintenance work while maintaining the high quality which local people expect and making positive changes for biodiversity.

### Partnership working to achieve our goal:

The Council is working in partnership with our contractor, Idverde, to reduce our carbon emissions. Idverde have made changes to their working environment and are reducing their carbon emissions by improving the efficiency of their vehicles and the routes they take whilst working across the Borough. They have also purchased electric vehicles for the CATs team.

These changes are part of work occurring across the Council towards our commitment to be carbon neutral as an organisation by 2030.



Protect  
Care and Invest  
to create a  
better borough

