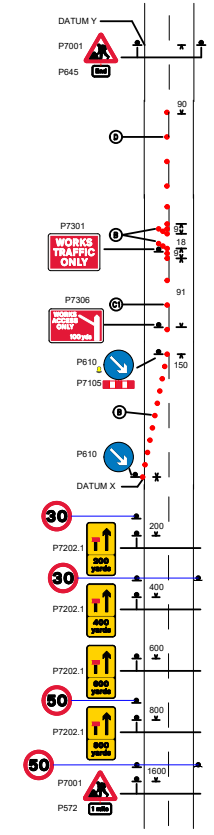
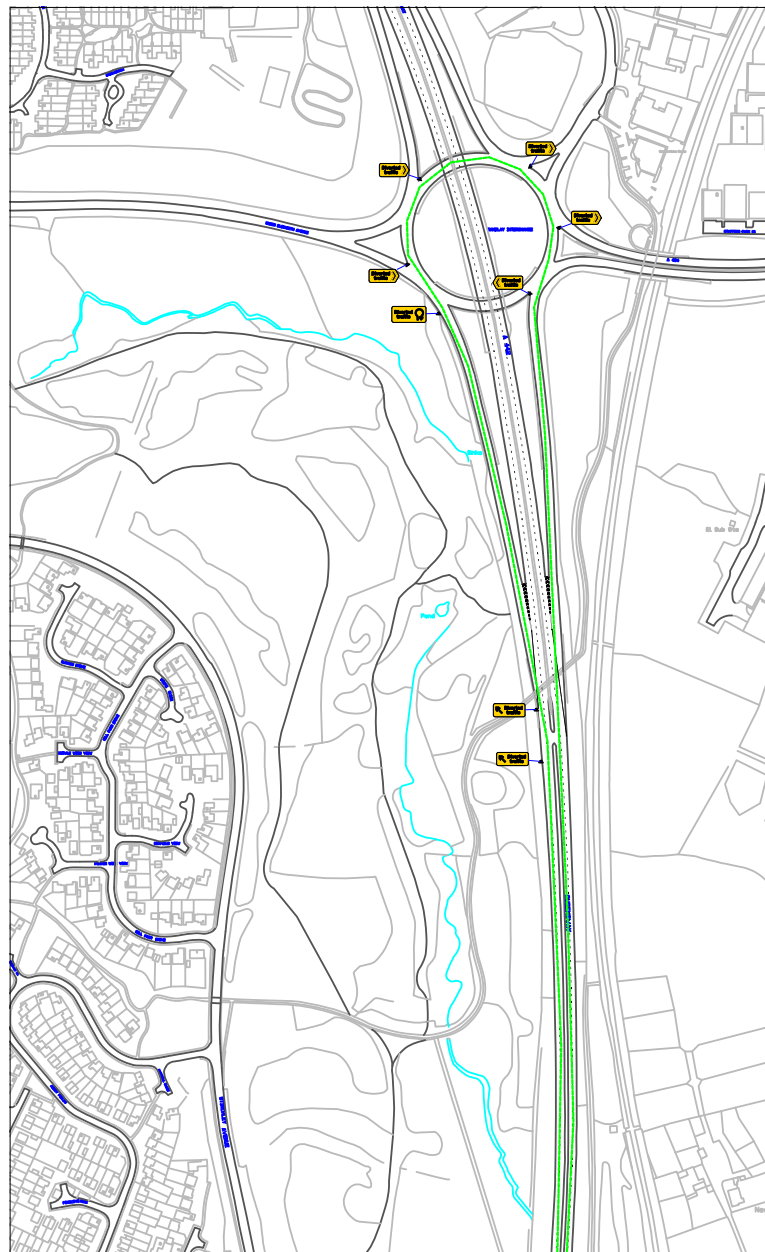
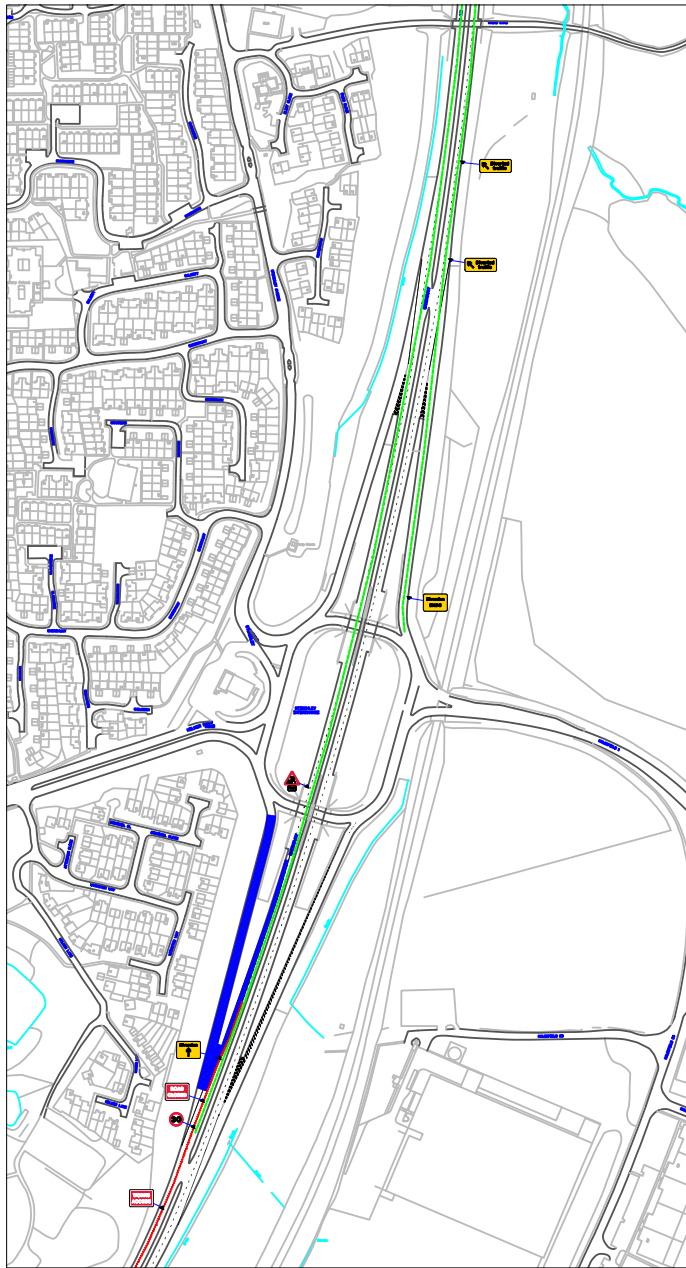


- DETAIL B**
 1. Single or dual 'P645' traffic cones, spacing 1.5m.
 2. Single or dual 'P645' traffic cones, spacing 1.5m.
 3. 'P7301' 'WORKS AHEAD' sign, spacing 1.5m.
 4. 'P7301' 'WORKS AHEAD' sign, spacing 1.5m.
 5. 'P7301' 'WORKS AHEAD' sign, spacing 1.5m.
 6. 'P7301' 'WORKS AHEAD' sign, spacing 1.5m.
- DETAIL C1**
 1. Single or dual 'P645' traffic cones, spacing 1.5m.
 2. 'P7301' 'WORKS AHEAD' sign, spacing 1.5m.
 3. 'P7301' 'WORKS AHEAD' sign, spacing 1.5m.
 4. 'P7301' 'WORKS AHEAD' sign, spacing 1.5m.
 5. 'P7301' 'WORKS AHEAD' sign, spacing 1.5m.
 6. 'P7301' 'WORKS AHEAD' sign, spacing 1.5m.
- DETAIL C2**
 1. Single or dual 'P645' traffic cones, spacing 1.5m.
 2. 'P7301' 'WORKS AHEAD' sign, spacing 1.5m.
 3. 'P7301' 'WORKS AHEAD' sign, spacing 1.5m.
 4. 'P7301' 'WORKS AHEAD' sign, spacing 1.5m.
 5. 'P7301' 'WORKS AHEAD' sign, spacing 1.5m.
 6. 'P7301' 'WORKS AHEAD' sign, spacing 1.5m.
- DETAIL D**
 1. Single or dual 'P645' traffic cones, spacing 1.5m.
 2. 'P7301' 'WORKS AHEAD' sign, spacing 1.5m.
 3. 'P7301' 'WORKS AHEAD' sign, spacing 1.5m.
 4. 'P7301' 'WORKS AHEAD' sign, spacing 1.5m.
 5. 'P7301' 'WORKS AHEAD' sign, spacing 1.5m.
 6. 'P7301' 'WORKS AHEAD' sign, spacing 1.5m.
- DETAIL E**
 1. Single or dual 'P645' traffic cones, spacing 1.5m.
 2. 'P7301' 'WORKS AHEAD' sign, spacing 1.5m.
 3. 'P7301' 'WORKS AHEAD' sign, spacing 1.5m.
 4. 'P7301' 'WORKS AHEAD' sign, spacing 1.5m.
 5. 'P7301' 'WORKS AHEAD' sign, spacing 1.5m.
 6. 'P7301' 'WORKS AHEAD' sign, spacing 1.5m.



Traffic Management

This drawing has been produced for a specific client & project identified below and is not intended for use by any other person or for any other purpose.

NOTES

- All signs as per Chapter 8. Distances between cones to be 3m maximum unless otherwise noted.
- Distances between signs NOT to scale for purpose of clarity.
- All sign placement subject to available safe working space.
- The purpose of the Traffic Management Plan is for it to be used only as a guide and all traffic management equipment should be put out according to the 'Safety at Street Works and Road Works - Code of Practice', i.e. Red Book & the 'Traffic Signs Manual Chapter 8', i.e. Yellow Book.

Key

	Sign position and aspect of vision
	Position of signal head
	Cones
	No Parking Cones
	WORK AREA
	WORK AREA NEEDS SWITCHING
	ROAD CLOSURE
	Diversion Route 2
	Stop & Go System
	PERMANENT TRAFFIC SIGNAL
	PERMANENT PEDESTRIAN SIGNAL

**THIS DRAWING MUST BE PRINTED IN COLOUR
ALL SIGNAGE TO BE IN WELSH AND ENGLISH**

NTS @ A3
 NTS - OTHER SIZES
**DO NOT SCALE FROM THIS DRAWING -
 All Dimensions to be verified on site.**

A	AS DRAWN
REV	DATE DESCRIPTION

TRAFFIC MANAGEMENT PLAN

Client:

Drawing Number: QTM-238-02
Drawing Title: VRS 21 AND 22 A442 STIRCHLY INTERCHANGE TELFORD TF3 2DE
 NORTHBOUND LANE 1 CLOSURE

Design:	Technol Officer:	REV:
Name: C. DE-COURCY MScE		
Signature:		A
Date: 30/03/2021		