

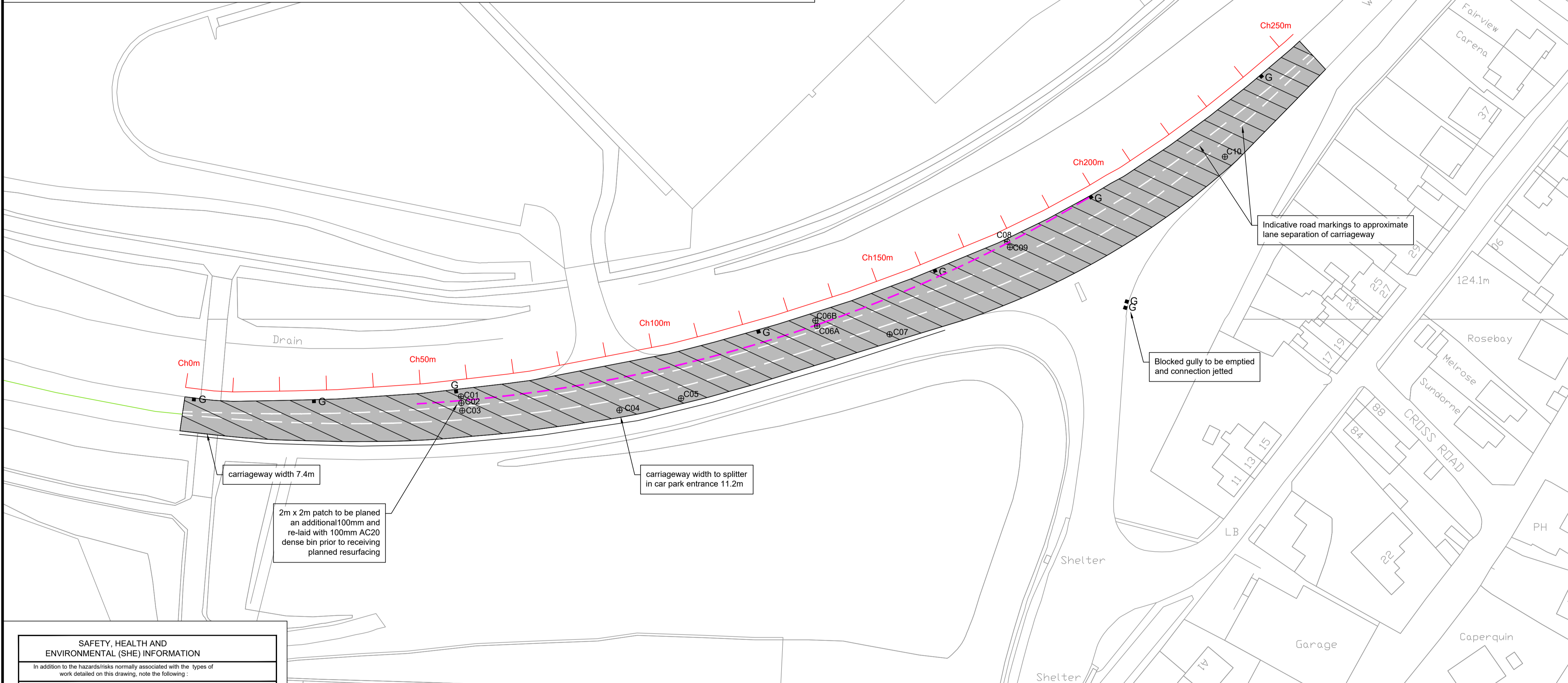
Core 2 @ Chainage 58m: Approx. 100mm Asphalt, 220mm concrete



Core 2 @ Chainage 58m: Highlighting poor quality concrete and brickwork, at approx. depth 100mm



Note: All cores except core 2 and core 8 show approx. 180-220mm asphalt on sub base. Core 2 is an anomaly, where as core 8 is what is to be expected in an area of narrow widening. Full details of the cores will be included on an updated drawing once the core logs and PAH (if required) results are received.



- Notes
- Plane 110mm (Approx. 2.795m2) and replace with:
50mm HRA 35/14 surf 40/60 des
60mm AC 20 HDM bin 40/60
 - PG100 Rapid Repair asphalt reinforcement system to be laid on planed surface to span old widening joint. Offsets of crack to be recorded on site prior to planing.

- Key - Ironwork and Drainage
- All gullies and manholes to be cleaned, and connections and main run to be jetted.
 - G Existing gully

- NOTES - GENERAL
- Do not scale from this drawing. If in doubt contact Telford and Wrekin Council - Highways, Transportation and Engineering (TWC - HTE).
 - All dimensions are in metres (m) unless otherwise noted.
 - This drawing is to be read in conjunction with all other relevant drawings relating to this project.
 - All dimensions should be checked on site prior to construction. Any discrepancies are to be immediately reported in writing to TWC - HTE.
 - The contractor shall, prior to construction, check and verify that the details shown on this drawing are fully compatible with any as constructed dimensions or levels. Any discrepancies are to be immediately reported in writing to TWC - HTE.
 - This drawing has been prepared for the exclusive use of the commissioning party and unless agreed in writing by TWC - HTE no other party may use or rely on its contents. No liability is accepted by TWC - HTE for any use of this drawing other than for the purpose for which it was originally prepared.
 - It should be noted that this drawing may include data provided by third parties. No liability is accepted by TWC - HTE as to the accuracy of this data.
 - This drawing shall not be reproduced in any way without the written permission of TWC - HTE.
 - Additional care to be taken to avoid conflict with pedestrian and vehicular traffic accessing Telford Priory School car park.
 - Road markings shown are indicative only and must not be used for reinstatement of the road markings.

- NOTES - CARRIAGEWAY
- This drawing should only be read in relation to the subject of the title. Other information shown on the drawing is to be considered indicative only. Reference should be made to appropriate drawing series for other information.
 - All patching/resurfacing, kerbing and ironwork must be marked out in the presence of the Project Manager and agreed prior to the commencement of any works on site.
 - Bond Coat to MCHW Clause 920 is required at all bound layer interfaces within the pavement, this includes planed surfaces and new asphalt layers.
 - All joints, kerbs and ironwork must be cleaned of dust and debris and all vertical faces to be painted with bitumen prior to resurfacing.
 - Planed surface must be swept clean and inspected immediately following planing in order to determine the extents of any areas of deep patching. Any loose or delaminating material should be brought to the attention of the Project Manager and must also be removed.
 - All Gullies to be cleared of debris once works complete prior to the site being reopened to traffic.
 - All bituminous materials to be transported, laid and compacted in accordance with BS 5948:2015.
 - All ironwork to BS EN 124:2015

Rev	Revision/Issue Date	Purpose of Revision/Issue	Drawn	Checked	Approved
P3	19.07.21	PG100 Asphalt Reinforcement added. 2m x 2m additional depth patch added.	SW	TS	NL
P2	08.04.21	Notes/works added as highlighted in Rev Clouds, core photos added, widening joint added to key	SW	NL	NL

SAFETY, HEALTH AND ENVIRONMENTAL (SHE) INFORMATION

In addition to the hazards/risks normally associated with the types of work detailed on this drawing, note the following:

CONSTRUCTION

- STATS plans highlight minimal services within the confines of the carriageway. They do however show a 11kv electric cable crossing the carriageway. Refer to STATS plans for information.
- School car park access located within the works extents. Works planned within school holidays to avoid disruption, but communication required with school to check other events.
- Uncontrolled pedestrian crossing on the Eastern end of the site
- Footway adjacent to the West bound carriageway.

MAINTENANCE / CLEANING

- As above

ALTERATION / DEMOLITION

- As above

It is assumed that all works will be carried out by a competent contractor working, where appropriate, to an approved method statement

COVID-19

DURING THE COVID 19 PANDEMIC ALL PERSONNEL MUST STRICTLY ADHERE TO GOVERNMENT GUIDANCE, INCLUDING THE DOCUMENT ENTITLED 'SITE OPERATING PROCEDURES - PROTECTING YOUR WORKFORCE'. THIS GUIDANCE INCLUDES BUT IS NOT BE RESTRICTED TO:

- SOCIAL DISTANCING, 2M DISTANCE FROM COLLEAGUES AT ALL TIMES
- INCREASED LEVELS OF HAND WASHING AND PERSONAL HYGIENE

ALL PERSONNEL MUST COMPLY WITH THEIR OWN COMPANY RISK ASSESSMENTS AND METHOD STATEMENTS, AND COMPLY WITH THE REQUIREMENTS OF BALFOUR BEATTY HEALTH AND SAFETY POLICY.

Core Log Summary - Wrockwardine Wood Way

Core No	Chainage (m)	Lane	Surface Course depth (mm)	Binder Course depth (mm)	Asphalt depth	Concrete depth	TBM noted (Or Cat.)	DCP (Depths below surface level noted)	Deterioration depth	BaP (mg/kg) Layer 1	BaP (mg/kg) Layer 2
C1	58	EB	44	44-117	222	n/a	C		Good overall condition, some small voids in lower layer. Bond break at 117mm	<2 (0-120mm)	
C2	58	EB	47	47-106	106	106-330	C		Taken between two longitudinal cracks on the outside edge of East bound lane. Surface course in fair condition, binder course voided and deteriorating in bottom half. Concrete base seems poor quality with some deterioration. Bond break at 106mm	<2 (0-106mm)	
C3	58	Centre	44	44-75	176	n/a	C		Taken within hatch close to East bound lane. Voids in binder layer	<2 (0-120mm)	
C4	90	WB	41	41-109	208	n/a	C		Crack through all layers. Bond break at 109mm. Base layer deteriorating	<2 (0-120mm)	
C5	102	WB	46	46-103	180	n/a	C		No defects noted	<2 (0-120mm)	
C6a	135	EB	41	41-72	203	n/a	C		Voids 72-130mm	<2 (0-120mm)	
C6b	135	EB	45	45-113	194	n/a	C	Median CBR 26%	voids in binder and base course	<2 (0-120mm)	
C7	149	WB	45	45-110	196	n/a	C		Minor voids in base course	<2 (0-120mm)	
C8	182	EB	45	45-123	123	123-320	C		Voids in Binder course, debonded at 123mm. Concrete has diagonal crack in lower half.	<2 (0-120mm)	
C9	182	EB	46	46-128	232	n/a	C		Voids 71-128mm	<2 (0-120mm)	
C10	227	WB	46	46-72	191	n/a	C		Bond break at 72mm. Minor voids in surface course and base course.	<2 (0-120mm)	

Telford & Wrekin Council

Dean Sargeant, Director, Neighbourhood & Enforcement Services, Addenbrooke House, Telford, TF3 4NT

Project: HM21/22 - Wrockwardine Wood Way

Drawing title: Carriageway resurfacing scheme

Drawing status: S2 - FOR PRICING

Scale: 1:500 A1 Date: 22.03.2021 Drawn-by: C.PARKES Checked-by: S.WILKINS Approved-by: N.LITTLE

DO NOT SCALE FROM THIS DRAWING

Drawing number: WWW-TWC-HPV-00-DR-CH-0700 Rev: P3