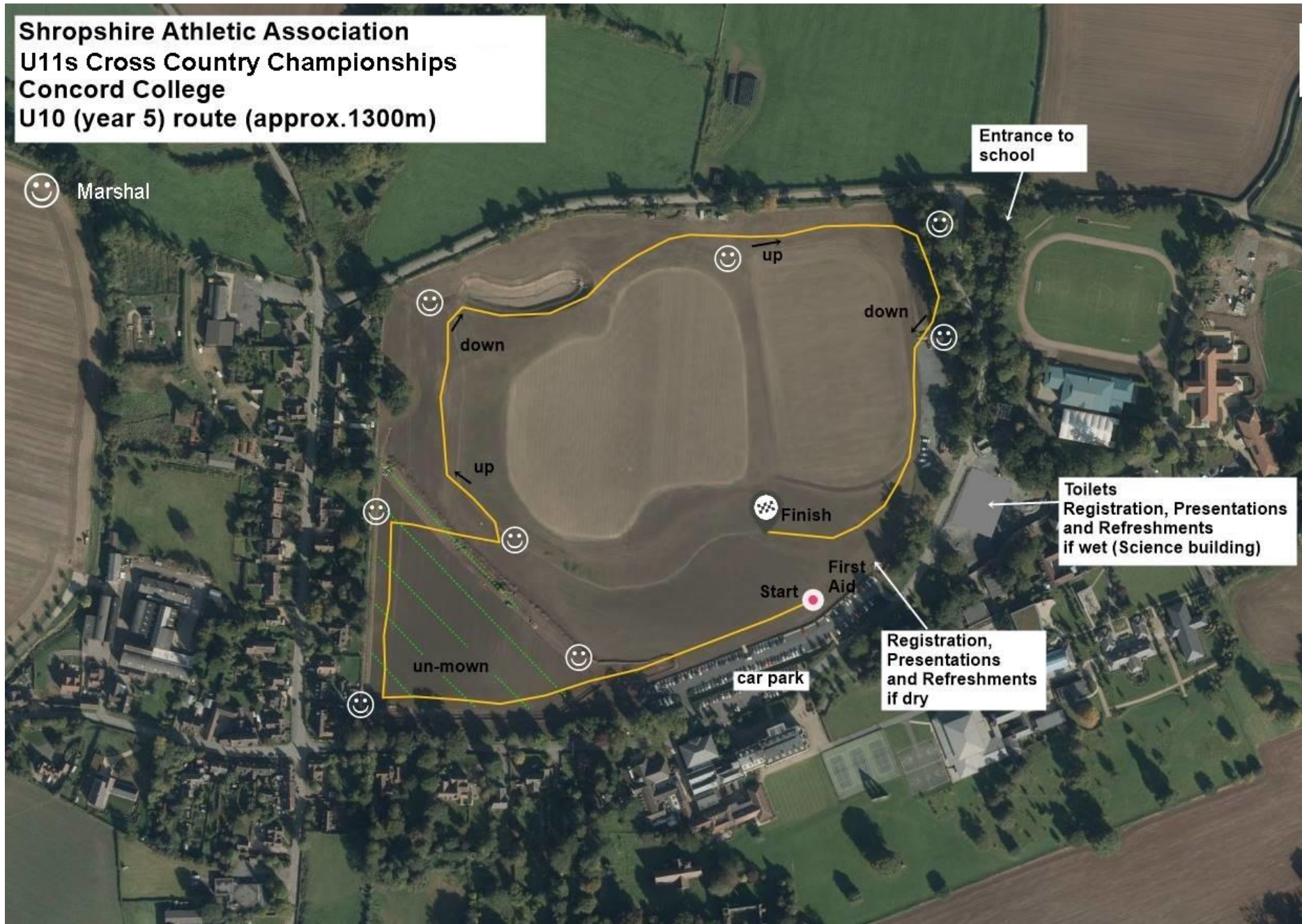


**Shropshire Athletic Association
U11s Cross Country Championships
Concord College
U10 (year 5) route (approx. 1300m)**



☺ Marshal

Entrance to school

☺ up

down

down

up

☺ Finish

Toilets
Registration, Presentations
and Refreshments
if wet (Science building)

First Aid

Start

car park

Registration,
Presentations
and Refreshments
if dry

un-mown

☺

☺

☺

☺

☺

☺