



Telford & Wrekin
Co-operative Council

Protect, care and invest
to create a better borough

Adult Social Care **Position Statement** Autumn 2023

Working together with people, key partners and communities to enable people to live well and independently in Telford and Wrekin.

Every child, young person and adult lives well in their community.
(Council Priority)



Key highlights



Proportion of people using social care who receive self-directed support in the top quartile nationally.



Number of older people who remain at home 91 days after discharge from hospital into reablement services in the top quartile nationally.



Established the Adults at Risk Service.



My Options Shared Lives (Adult Placement) service has been rated as Outstanding by CQC, all other My Options services rated Good.



Increased financial investment in Adult Social Care



Providing 24/7 information for residents on local community services.



Leading the integration of health and social care through the Telford & Wrekin Integrated Place Partnership.



Digital Excellence: Shared Care Record, Virtual House and Smart Hub initiatives.



Further developing our quality assurance mechanisms through collaborative working.



Strategic partnership boards are co-chaired by people with lived experience and associated strategies are co-produced. E.g. Autism Strategy 2023-2028

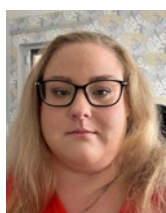


Co-production of the Independent Living Centre with Wellbeing Independent Partnership.



Continued commitment to practice and development of staff. E.g. social work progression framework.

Co-production is at the heart of Adult Social Care



Sarah Roberts
Co-Chair
Making it Real
Board



Telford
Voices



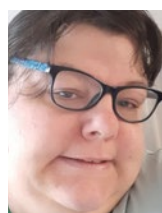
Carer's
Centre
and CVS



Beverley Aston and
Mark Austin
Co-Chairs
Ageing Well Partnership



Stacey
Co-Chair
Learning
Disability
Partnership



Cllr Kelly
Middleton
Chair
Mental Health
Partnership



Debbie Gibbon
Chair
Autism
Partnership
Board



Sarah Poole
Adult Social Care
Co-Production
Lead

Our priorities for 2023/24

- 1 Provide early information and advice to enable people to help themselves.
- 2 Enable people to live independently in their own homes for longer.
- 3 Support people with care and support needs to live a life free from abuse.
- 4 Work in partnership with people, communities and partners.
- 5 Work with the care providers to develop a quality sustainable care market.

Our Adult Social Care Charter

The Adult Social Care Charter was co-produced with the Making it Real Board and reflects the principles that all staff in adult social care follow.



We will always promote independence.



We will listen with empathy and understanding.



Telford & Wrekin
Co-operative Council



making it real

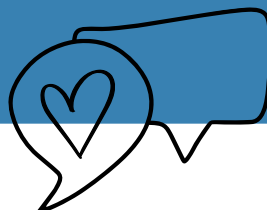


We will respect your decisions and be honest and open.

You will know who to contact and we will always get back to you.



Our conversations will be honest and personal to you we won't just tick boxes.



Telford and Wrekin

Our key facts and figures



Our net budget for Adult Social Care 2023/24 was

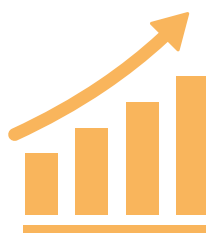
£64.532 million

Telford and Wrekin highlights, in 2022/23 it is estimated*



**THERE ARE
185,600**

people living in Telford and Wrekin; 32,970 over 65 years and 111,450 aged 18-64.



+11.4%

population increase. Fastest growing in West Midlands.

+35.7%

Increase in 65+ population.

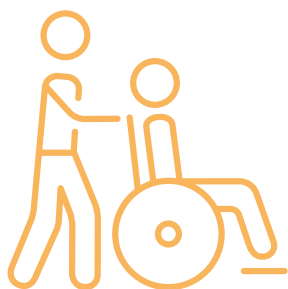
England 20.1%. For 70-75 year olds there has been a 52% increase.

31,000

People living in the 10% most income deprived neighbourhoods nationally 17%, England 10%.

16.6%

Older people affected by income deprivation. England 13.2%.



1 in 5

People disabled 20.5%, England 17.7%.



18,000

People providing unpaid care 10.6%, England 8.9%.



14,977

contacts in a year. 8,151 for new people with no existing services



4,176 2,158

Assessments and prevention

People receiving long term services



36

Domicillary care providers



41

Care homes



1,240

Beds

Adult Social Care What we do

Adult Social Care 'Working Together' to enable people to Live Well and Independently in Telford and Wrekin. Working with people and partners, Adult Social Care supports:

1

People over the age of 18 to remain in their own home and as independent and safe as possible.

2

Carers to continue in their caring roles with advice, information and support.

3

People with a range of needs including, physical disabilities, sight or hearing problems, learning disabilities or mental health illnesses.

4

Young people transitioning from Children's Services into adulthood.

Adult Social Care Values

Co-production
and
collaboration

Learn
and
develop

Openness
and
honesty

Celebrate
good practice

Ownership
and
accountability

Fairness
and
respect

Involvement

Integration

Our leadership team



Amanda Benton
Autism, Learning
Disability and
Mental Health



Jonathan Rowe
Executive
Director:Adult
Social Care , Health
Integration and
Wellbeing



Amardeep Grewal
Principal Social
Worker



Simon Froud
Director of
Adult Social Care



Michael Bennett
Hospital and
Enablement



Emma Clutton
Prevention,
Independence, Older
People and Disability



Victoria Worthington
Safeguarding
and DOLs



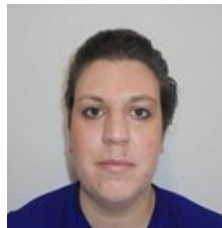
Clare Hall-Salter
Assurance,
Transformation and
Financial Management



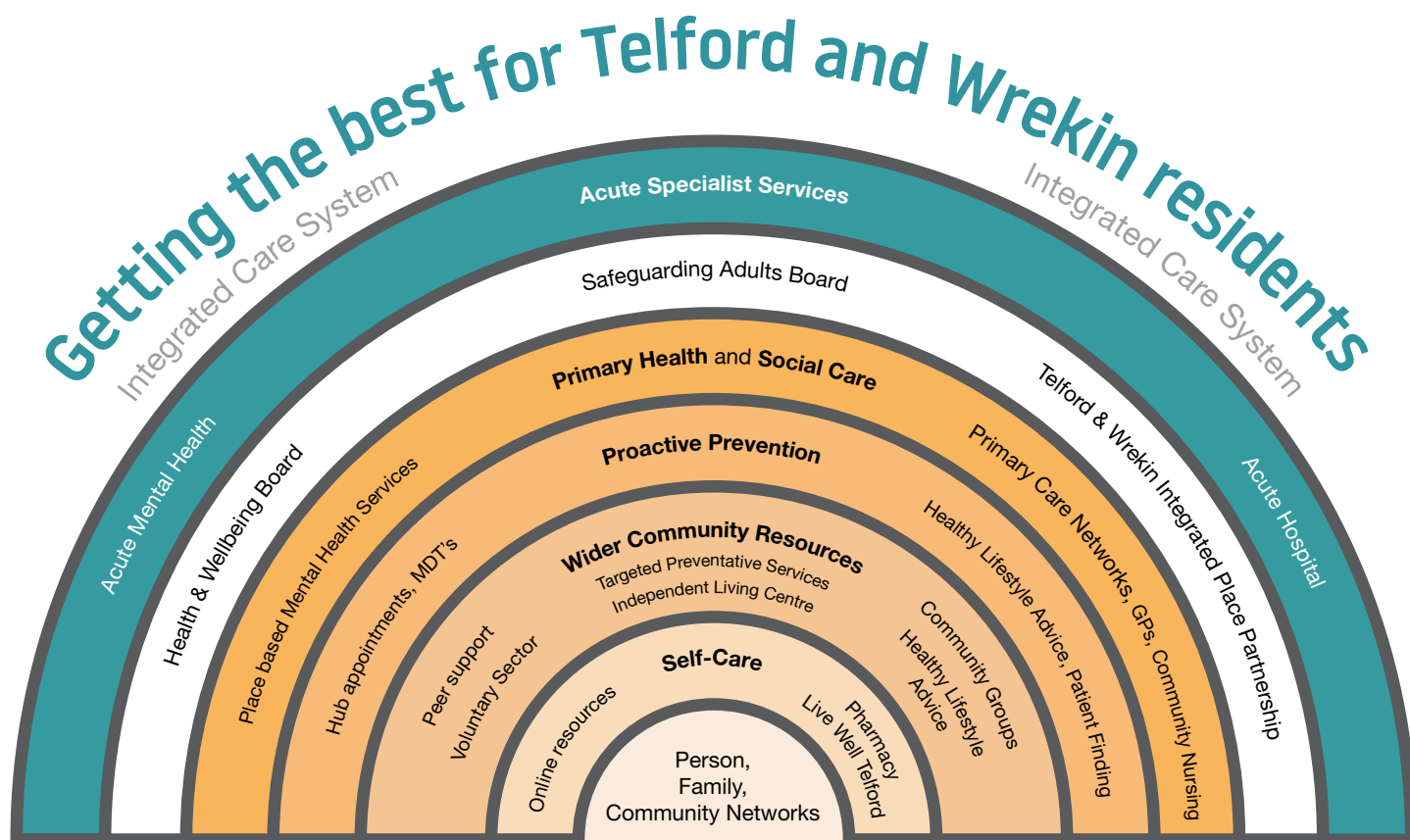
Cily Paul Watling
Cabinet Member



Sarah Bass
Place Based
Commissioning,
Procurement and
Brokerage



Sara Podmore
My Options



Adult Social Care Key Documents and Websites

Telford & Wrekin Council Vision and Council Plan

Adult Social Care Corporate Strategy

Adult Social Care Position Statement (pre-cursor to strategy)

Adult Social Care
The Local Account

Health and Wellbeing Strategy
2020-2025

Live Well Telford online directory
of services

Telford & Wrekin Market Position
Statement

Place Based Specialist and
Supported Accommodation
Strategy

Telford & Wrekin Safeguarding
Partnership

Adult Social Care Quality
Assurance Framework

Place Based Learning Disability
Strategy

Place Based Autism
Strategy

Place Based Ageing Well
Strategy 2023-2033

Shropshire, Telford & Wrekin
Integrated Care Strategy
and Joint Forward Plan 2023

Adult Social Care policies
(TRiX)

Principal Social Worker
Annual Report

My Options website

Adult Social Care Improvement
Plan

Telford & Wrekin Integrated
Place Partnership Strategic Plan
2022-2025

My Options CQC Report

Telford & Wrekin Customer
Strategy and Digital Strategy

Adult Social Care Co-production
Framework

Carers Strategy –
COMING SOON

Adult Social Care Strategy –
COMING SOON

Adult Social Care workforce
strategy – COMING SOON

Adult Social Care Prevention
Strategy – COMING SOON

Safer Telford and Wrekin
Strategy 2021-2024

All Age Mental Health Strategy –
COMING SOON



We strive to deliver a person centred, integrated and collaborative service that brings social care, health organisations and key partners together for Telford and Wrekin residents with care and support needs. **ASC Service Plan**

