



## Residential Parking Schemes

### Westbourne, Woodside, Telford

#### Briefing Note



November 2022



## 1.0 Background

Concerns have been raised regarding parking difficulties in Westbourne, Woodside.

A review of Westbourne (covering 0.1 Square Kilometers in total), has been undertaken to assist in the consideration of engineering measures that would best support a scheme to further improve parking within the area. All items discussed in this note will be discussed between the Highways Engineering Team, Residents and the Parish Council.

The review area of Westbourne is shown below (please see Fig. 1.0).

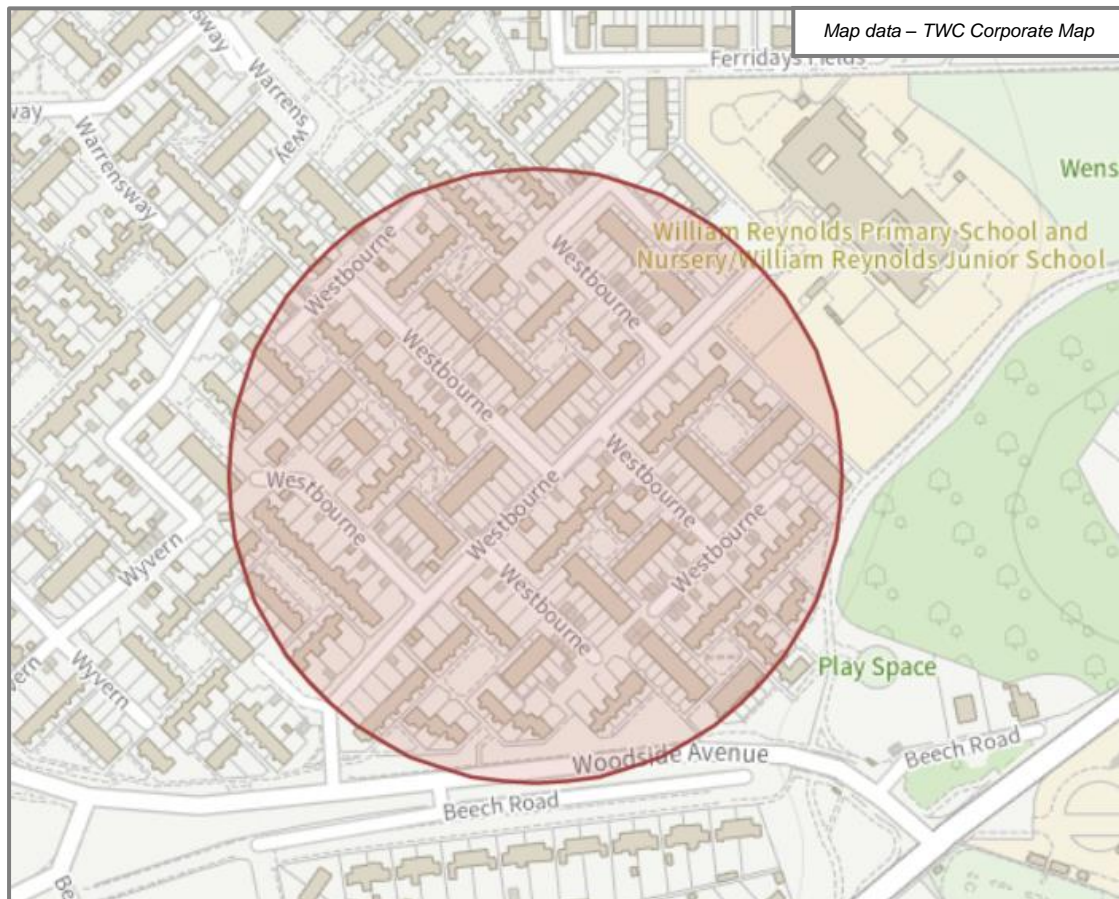


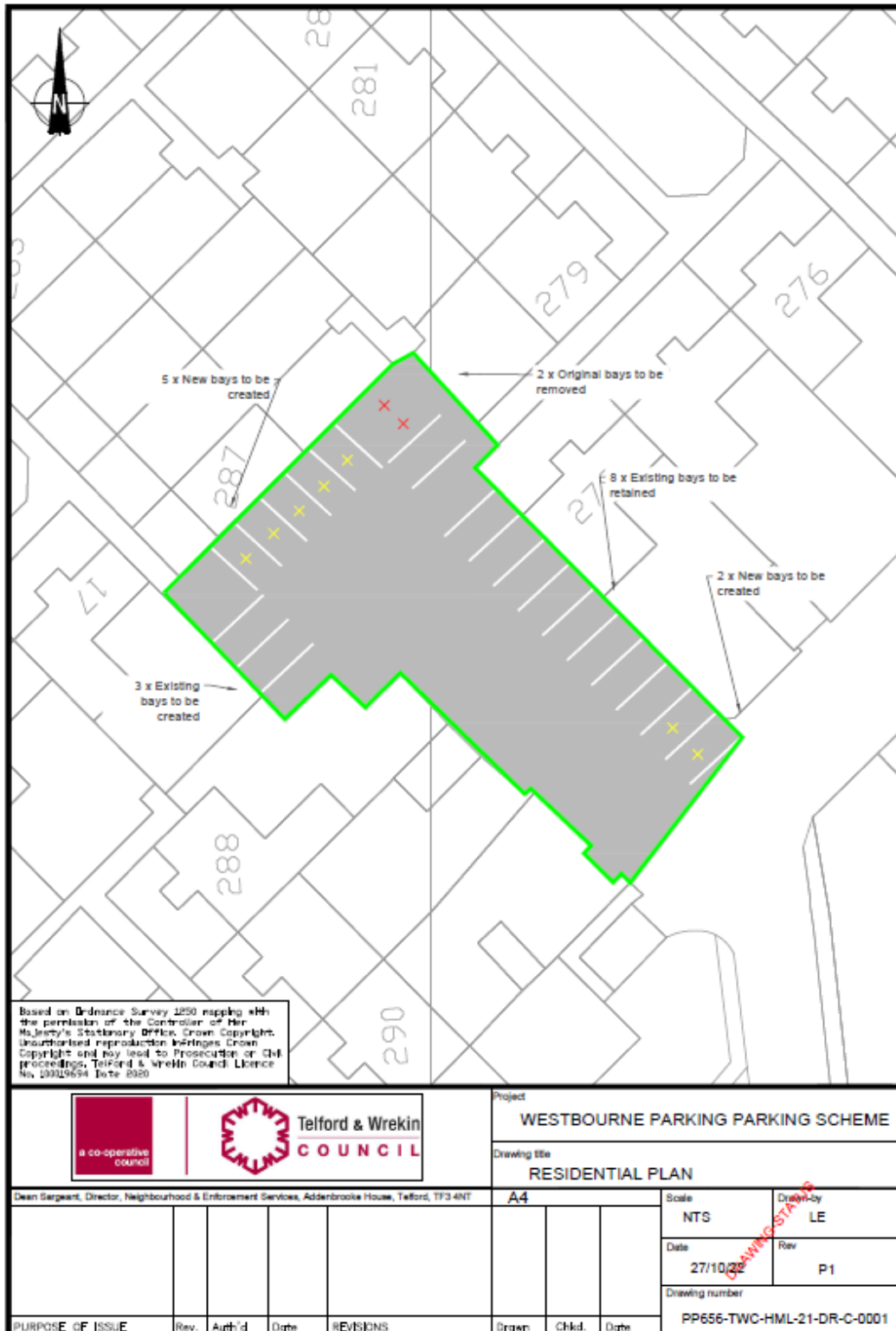
Figure 1.0 Review Area – Westbourne (Highlighted Red)

## 2.0 What changes are proposed?

As part of our investigations, two areas have been identified to expand parking provisions. The first is in Westbourne through the rearrangement of parking bays and the second is to extend the layby on Woodside Avenue. The potential schemes identified will provide additional parking spaces and will help alleviate some of the parking pressures within the area.

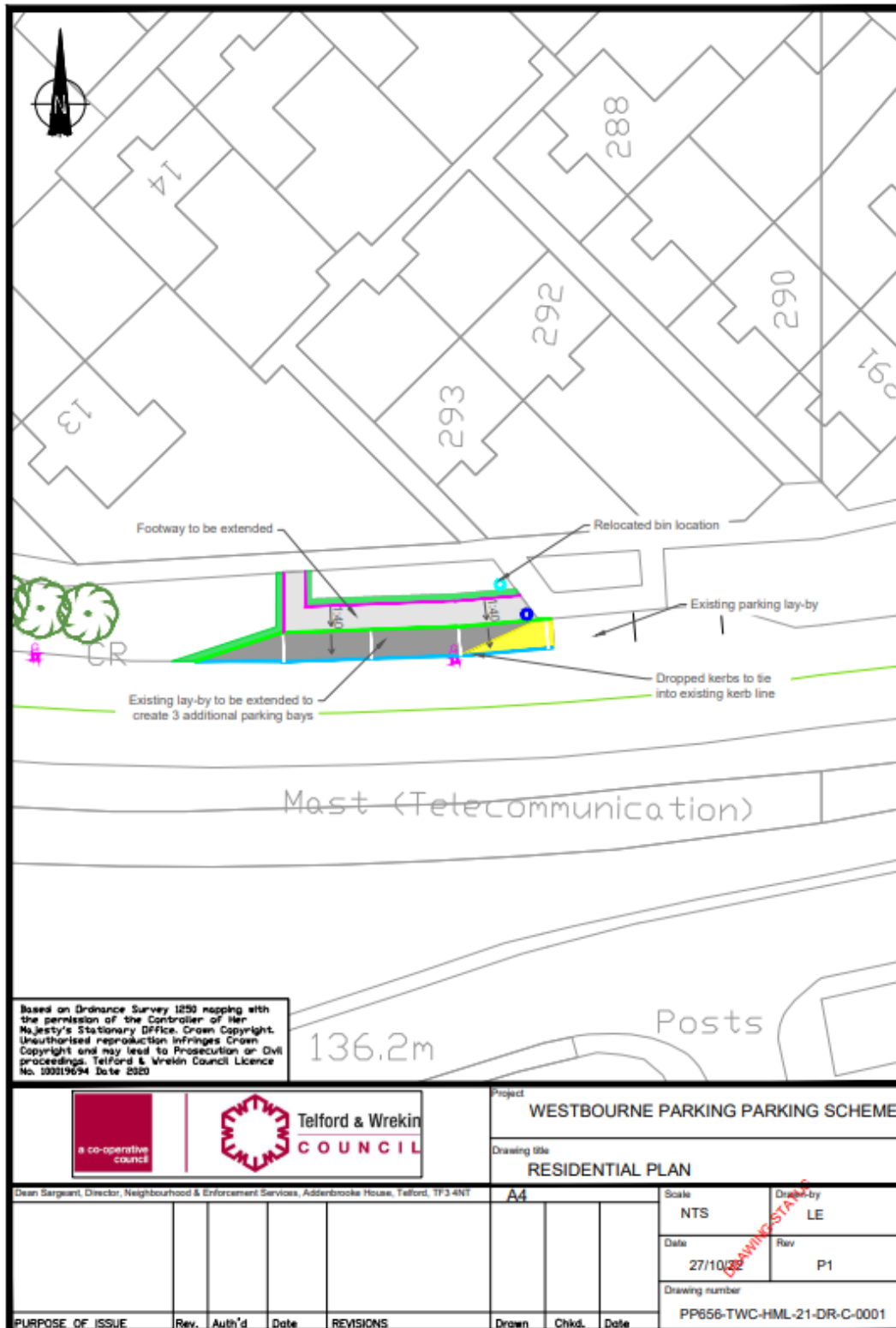


## 2.1 Location A -





## 2.2 Location B -





### 3.0 What will happen next?

The outcomes of discussions between the Highways Team, Local Members and the Parish Council will be reviewed in detail and a decision will be made based on how best to proceed. Should agreement be reached, the scheme will be taken forward.

It is considered that the public consultation stage will be a direct test of public support for the option presented before proceeding to detailed design. The outcome of the public consultation will be reviewed in detail and a decision will be made based on the content of the comments received.

Factors that will be taken into account will include, but not necessarily be limited to:

- Road safety
- Level of support
- Detail of any objections

As a local resident you may have a view as to the best location for the additional parking, however, there are a number of hidden factors that influence this such as the location of hidden underground services for example gas mains, electricity and water pipes and who the landowner is, as not all the land falls under the councils ownership. Taking all this into account, all these factors would have been explored before finalising the location of the proposed additional parking bays. I appreciate that this investment may not fully solve all the parking issues, however, it will help with the availability of parking within the area.

#### What will happen if the proposal are not supported?

The content of any objection will be considered and responded to accordingly. Should the proposals receive a high level of objection, it is unlikely that the proposal will be taken forward and an alternative option may be considered if possible. The format of any alternative proposal would be based on the content of any objection. Any alternative scheme would then be put forward as part of the future capital programme and would need to be prioritised alongside other similar schemes.