



Telford & Wrekin
Co-operative Council

Protect, care and invest
to create a better borough

Telford & Wrekin Local Offer **Newsletter**



SEND Newsletter February 2023

**Discover all the current news and information
about Special Educational Needs and Disability in
Telford & Wrekin**

Welcome from the Service Delivery Manager

Welcome to the February edition of the SEND Newsletter, I hope you enjoyed a restful half-term.

This month we have a strong focus on strategic developments for SEND across the area partnership. The draft SEND and Alternative Provision Strategy is now open for consultation, I really would encourage you to share your views – they do matter. I would also like to request that you to share the strategy with parents, carers and families at your school or setting. This includes not just with children and young people who have Education Health and Care plans but also with families that have children who are receiving SEN support. The draft strategy demonstrates the commitment of the area partnership to work towards improving outcomes for children and young people. Based on seven priority areas it outlines the intent, how each priority will be implemented and the expected impact for children, young people and their families.

The 'Shout Out' Young Peoples Group has been reformed, at the first meeting the group seven young people attended to share their views on the SEND and Alternative Provision priorities. It was an insightful evening listening to the lived experience of the young people and learning about the issues that they face everyday at school & college. Discussion points centred around bullying, raising awareness of SEND in schools and the community, concerns about the effect of isolation on young people (including detentions and exclusions), mental health and wellbeing, school awareness of sensory overloads and how as young people they would like to be treated with respect and have their opinions valued. It would be great to hear what your school councils have been discussing, please do feel free to share their views with us by email (SENDandInclusion@telford.gov.uk). More information on how school councils and parliaments can link up with the Shout Out Young People's Group is shared in the Newsletter.

The next Face to Face SENCo Network Meeting is currently being organised, we are planning an exciting agenda around Transition to include top tips, best practice, opportunities for discussion and support from SEND services.

Once again I would like to express my thanks for all work that is undertaken by all partners as we continue to develop and improve our SEND services in the local area.

Natalie Bevan
Service Delivery Manager: SEND & Personalisation

SEND Local Offer

SEND & Alternative Provision Strategy Consultation

The SEND & Alternative Provision Strategy for Telford & Wrekin area partnership has been developed using feedback from parents, carers, young people and professionals across health, social care, education support services, early years settings, schools and post 16 providers.



Protect, care and invest
to create a better borough



NHS
Shropshire, Telford
and Wrekin

Working together for better SEND and AP outcomes in Telford and Wrekin

2023-2028

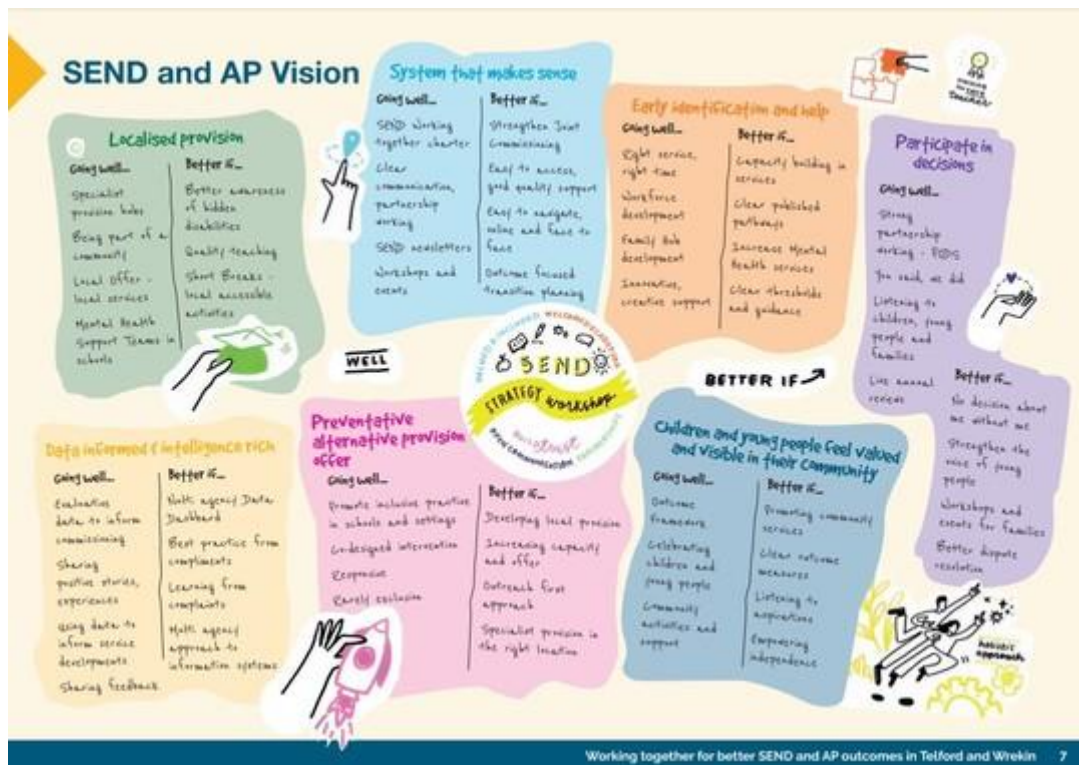
Special Educational Needs and Disability
Alternative Provision

DRAFT FOR CONSULTATION



The strategy sets out Telford & Wrekin local area partnership's vision for children and young people aged 0-25 years with special educational needs and/or disabilities and for children and young people who are accessing or may need to access alternative provision.

[Download: Draft SEND & Alternative Provision Strategy](#)



SEND and AP Vision

- Localised provision
- System that makes sense
- Early identification and help
- Participate in decisions
- Data informed and intelligence rich
- Preventative alternative provision
- Children and young people feel valued and visible in their community

We would like to welcome you to share your views on the SEND & Alternative Provision Strategy 2023-2028.

Closing date for the consultation: 16 March 2023

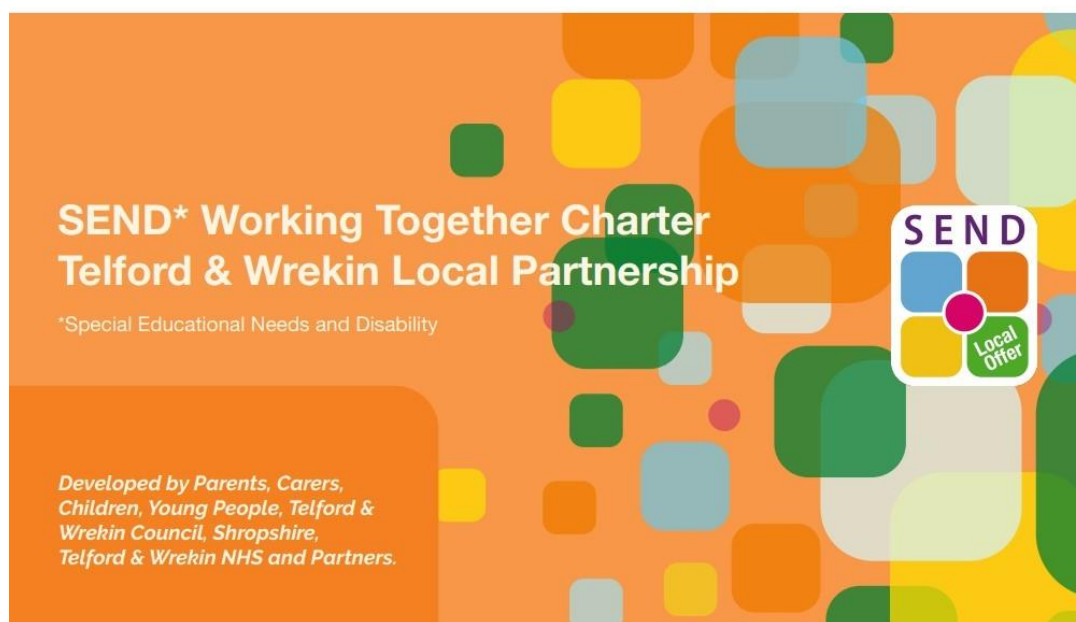
[Complete the survey](#)

[View this information on the SEND Local Offer](#)

Telford & Wrekin SEND Working Together Charter



Protect, care and invest
to create a better borough



The Telford & Wrekin SEND Working Together Charter, supports children and young people with special educational needs and disabilities (SEND) and their families to get involved in shaping and improving local services.

Look out for posters that will be delivered to schools, early years settings, post 16 providers, health providers and any local organisations that would like to join up and embed the principles of co-production within their working practices.

Further information and downloadable versions of the Charter, poster and plasma screen are available on the SEND Local Offer.



SEND* Working Together Charter Telford & Wrekin Local Partnership
*Special Educational Needs and Disability

The graphic features four quadrants around a central purple circle with a white shield and the word "TRUST":

- Top-left (blue): "Feel Valued and Included" with a hand-drawn figure.
- Top-right (orange): "OPEN Communication" with a hand-drawn figure holding a microphone.
- Bottom-left (yellow): "Feel Welcomed and Cared for" with a heart icon and a "FEEDBACK" loop containing "YOU SAID:" and "WE DID:".
- Bottom-right (green): "Working in Partnership" with a hand-drawn handshake.

SEND We are committing to embed co-production principles at the heart of our services. We agree to build trust by making the commitment to ensure that these principles are used to shape and improve services.
www.telfordsend.org.uk

SEND Local Offer – SEND Working Together Charter

Shout Out

Young People's Group

Shout Out Young People's Group provides an opportunity for young people to have their voice heard and to influence the decisions in Telford and Wrekin.

The group is interested in working collaboratively with schools and post 16 settings. They would like the opportunity to visit school councils and/or parliaments to share information about the group and discuss how they can work together to encourage young people to share their views.

Further developments are underway to strengthen the voice of children and young people in Telford & Wrekin. If you know a young person who is passionate about sharing their voice and would like to make a difference in Telford, please do encourage and support them to join the young persons group.

If your school or setting would like to request a visit to find out more please contact us via email: localoffer@telford.gov.uk.

SEND Local Offer: Shout Out Group

Post 16 Provider Survey

Feedback from Young People, Parents, Carers and Families

Since 2020, we have seen a number of specialist post 16 provisions open in Telford such as; Derwen@Telford, Crossbar (Inspire+), Really NEET and Mencap. As the first young people are completing their programmes and moving on from these settings, we wanted to give you the opportunity to share your experience of attending one of these settings or supporting a young person to attend. Your feedback will help us understand what is working well in post 16 education in Telford, but also to identify things that could make the experience in Post 16 education even better. Please share your feedback to 'Make a Difference' for children and young people with special educational needs and/or disabilities in Telford & Wrekin.

The survey closes on: Monday 6 March 2023 at 5pm.

Complete the survey

Area SEND Inspections

Ofsted & CQC Area SEND Inspection Briefing

Another briefing for all education settings is being arranged, please keep a lookout for the date on the Education Noticeboard.

Area SEND Inspection Framework & Handbook

Area SEND inspections: information about ongoing inspections

Education Health and Care Plans

Thinking of requesting an EHC assessment?

We ask that all educational settings first discuss new EHC need assessment requests with your allocated SEND officer before starting an application. They will work with you to discuss how best to get SEND support and provision in place for children and young people.

Thank you for your support.

SEND Officer & Locality Contact Details

Mental Health & Wellbeing

BeeU Pathway Drop In

A drop in for schools and settings is being arranged to ask specific questions to the BeeU service, SENCo's can register their interest to book a slot at the drop in by email. This session has been organised following feedback from the SENCo Network Briefing in December.

Wednesday 8 March 2023

9am - 10.30am

Fully booked

Friday 10 March 2023

9am - 10.30am

Limited spaces available

To book a place please email: marianne.johnson-everett@telford.gov.uk with your preferred date, schools will be allocated a 10 minute slot to discuss individual cases.

If you have already booked a place, meeting links and timeslots will be distributed week starting: 27 February 2023.

Health

Message from Shropcom – Advice Line

Please can we remind all schools and educational settings to use the Advice Line for Shropcom prior to making a referral to OT (Occupational Therapy) or SALT (Speech and Language Therapy). The advice line provides a triage service for referrals, including answering enquiries during your call.

Speech and Language Therapy

Advice Line: 01743 450800 (option 4)

Children's Speech and Language Therapy

Occupational Therapy

Advice Line: 01743 450800

E-mail: shropcom.OT4kids@nhs.net

Children's Occupational Therapy

Early Years

Specialist School Outreach

The Bridge School, Southall, Haughton and the Severn School Training Alliance have all worked together to create an outreach service for our mainstream settings – including early years providers.

This menu of support is intended to complement what is already available from central support services within Telford & Wrekin and to support settings in providing for **pupils with more complex needs**.

Applications

- Applications for Outreach are via **EYIP** or from discussion with your **Early Years team**
- Any request in writing must specify why you feel Outreach is needed and what you anticipate the impact will be.
- There must be parental consent
- A decision will be made with Special School Head teachers and outreach workers as to whether Outreach is agreed
- When Outreach is agreed the request will be forwarded to the Outreach team to discuss the nature of support that will be provided.

Early Years Inclusion Fund

Who can I talk to about the support and if it's really needed?

You can contact your Early Years team, SEND team and SEND Services.

For more information email: SENDandInclusion@telford.gov.uk

Early Years SEND Support Team

Schools

Inclusive School Forum (ISF)

The Inclusive School Forum is a school led forum within Telford and Wrekin that provides support and challenge to mainstream schools regarding the provision and practice they deliver for children with Special Educational Needs and Disability (SEND). It aims to provide an opportunity to network and deliver peer to peer guidance. The focus is, through sharing best practice, to develop an inclusive education system within Telford and Wrekin whereby children with increasingly complex needs achieve and succeed within mainstream schools.

SEND Local Offer - ISF

Preparing for Adulthood

Telford 16-19 Website Post 16 Prospectus

The Telford 16 - 19 prospectus has information on the post 16 offer in Telford & Wrekin including almost 300 A - levels, BTECs and Apprenticeships across six schools and colleges, making Telford an inspirational hub for learning, opportunity and achievement.

For more information please contact Future Focus by email: Future.focus@telford.gov.uk or, by phone: 01952 388988.

[Telford 16 - 19 Website](#)

The Apprenticeship, Employment and Skills Show

The Apprenticeship, Employment and Skills Show 2023 is back on **Thursday 16 March 2023**. The event will take place at The International Centre, Telford 12noon-7.30pm, with the 12noon-12.30pm slot available exclusively for SEND students as a quieter time before the event gets too busy.

It's the largest event of its kind this side of the NEC in Birmingham and aims to promote local apprenticeship opportunities to people across Telford, Shropshire and the West Midlands. It is completely free to attend.

Apprenticeships are a great way to build the workforce of tomorrow and are now seen as a very viable alternative to university. The show is also a great opportunity for businesses to showcase careers and jobs that exist now and in the future.

Please make sure this date is in your diary and reserve a slot for your school – we very much look forward to seeing you and your students at the show in 2023.

Places can be booked [online](#).

[Book a place for your school](#)

[Download: Apprenticeship Show Guide](#)

Guidance for young People applying for Post 16 Education (with an EHC plan)

Guidance is available on the SEND Local Offer for young people with EHC plans to help them plan their Post 16 transition and consider their future career prospects. Information is included about educational settings in our local area and an explanation of how young people can express a preference for the setting they wish to attend.

[SEND Local Offer - Guidance for Young People with an EHCP](#)

SEND Local Offer

SENCo Space

In the SENCo space that provides links to information and downloads that you may need to access frequently.

We would love to hear your views on what should be included in this space. If you have any suggestions please contact us at: localoffer@telford.gov.uk

[SEND Local Offer – SENCo Space](#)

SEN Support

We are looking to make improvements to the SEN Support information on the Local Offer - what would you expect to see on this page?

Let us know by email at: localoffer@telford.gov.uk

[SEND Local Offer - SEN Support](#)

SEND Training Courses

SENCo Network Meeting - Transition Workshop

The next SENCo Network Meeting is being arranged, this will be a Transition Workshop. We are planning an interactive session with top tips from teams, opportunities for discussion and best practice.

Save the Date:
Thursday 23 March 2023
4pm - 5.30pm

Venue to be confirmed.

Would you have space and availability to host the SENCo Network Meeting at your school?

If so please contact us at: SENDandInclusion@telford.gov.uk.

AET Making Sense of Autism – an introduction to Autism for Governors

This virtual training course for governors is delivered using materials from the Autism Education Trust's training module, Making Sense of Autism. The course will examine the three areas of difference that affect autistic pupils and explore how schools can begin to make reasonable adjustments in the way they support autistic pupils.

Tuesday 21 March 2023
6pm to 7.30pm

SENCO: Establishing Yourself as a SEND Leader

This is a 6 part series, there are 3 session remaining this year. 4-5pm via Teams.

1. Quality First Teaching and SEND Provision Matrix - **Tuesday 14 March 2023**
2. Outside agency information – **Wednesday 3 May 2023**
3. Information report writing – **Wednesday 28 June 2023**

Governor's Responsibilities for SEND

This course ensures governors with the responsibility of SEND have up to date knowledge of the SEND agenda and develop their skills as a critical friend.

Wednesday 14 June 2023
5pm to 7pm via Teams

Course Code: LSAT 212

AET Autism Education Trust

A reminder for any school wishing to book AET GAP training to get their training requests in as soon as possible. We are now taking requests for training in 2023/2024 for those of you looking to plan PD days for the upcoming academic year.

For more information about Training Courses, please take a look at the Telford Education Services Website to view the CPD Booklet for Schools and download the course booking form.

[Telford Education Services Website](#)

PODS

PODS Referral Form

PODS have recently amended thier referral process, professionals are now welcome to fill out the Referral Form to make the process easier, however, you are more than welcome to also contact us to discuss individual cases.

Download: [PODS Referral Form](#)

Contact Details:

Phone: 01952 458047 Email: support@podstelford.org

[PODS Website](#)

Free challenges at home sessions

Support sessions (for child/young person with Autism with/without diagnosis).

Open to 0-18 years from mainstream and special schools. For families to discuss home/life concerns and seek information and advice from Educational Psychologist team around emotional, behaviour, social, anxieties, routines, etc.

We use these sessions to support families to find solutions together and share experiences and offer mutual support in a safe and supportive place.

Challenges at Home – In Person Sessions

Challenges at Home – Online Evening Sessions

PODS Befriending Scheme

Please share the PODS Befriending Leaflet with your parent carers and family carers.



**PARENTS
OPENING
DOORS**
PARENT CARER FORUM



PODS BEFRIENDING SCHEME

WE'RE HERE FOR YOU!

Are you a parent of a child with a special need or disability,
and need to hear those words?

The PODS Befriending Scheme is a network of trained
parent volunteers who support other parents of children
with special needs at the time of diagnosis or during
challenging times related to their child's disability.

To hear more about PODS Befriending Scheme,
please contact *Kerrie Seagrave*, Member Support Co-ordinator
by email: kerrie@podstelford.org or telephone: **07309 753044**

www.podstelford.org

Company/Charity number: 1150871

Download: PODS Befriending Leaflet

Short Breaks Forum

The forum is an opportunity for parents, children and young people that use Short Breaks services, working together with Local Authority colleagues to talk about what is working well, what isn't and how we can make improvements to the Short Breaks offer. It is a place where we can share knowledge for the benefit of all, including inviting guest speakers on particular issues or services.

Short Breaks Forum Newsletter

The Short Breaks Forum Newsletter - February 2023 is now available to download, please share with your parents, carers and families.

[Short Breaks Forum Newsletter](#)

[SEND Local Offer: Activities & Events](#)

Learn Telford

Learn Telford is part of Telford & Wrekin Council and exists to provide high quality learning opportunities to the people living in the borough.

They aim to widen participation so that as many sections of the community as possible can experience the joy of learning and take advantage of the wider benefits that participation in learning brings, such as improved confidence, reduced social isolation, improved wellbeing, improved social cohesion and increased civic participation.

[Learn Telford](#)

Introduction to Special Educational Needs and Disability (SEND)

This is a **FREE** introductory course to understand about children and adults with Special Educational Needs and Disabilities (SEND) and provide an opportunity to learn more through a supportive and informative approach.

This course is intended for parents and carers of children or adults with SEND, or anyone interested in looking for work within this area to support someone with SEND.

During this course you will learn about:

- types of Special Educational Needs and Disabilities such as autism, ADHD and learning disabilities
- support provided in schools and colleges for children with SEND
- Health and Social Care for SEND young people and adults
- local and national information for carers

Learners with any special needs can discuss these with the tutor at the first session to ensure that the course is suitable or can be adapted for their needs.

It can be difficult to make the first step into something new so on the first day of the course the tutor will welcome you and provide further information and details about the course.

[Register Interest](#)

