



Telford & Wrekin
COUNCIL

Telford & Wrekin Council

Annual Monitoring Report

For the year 1 April 2021 to 31 March 2022

November 2023

Contents

1	Introduction	4
2	Housing	7
2.1	Housing Completions and Commitments	7
2.2	Housing Land Provision 2021	10
2.3	Housing Trajectory	12
2.4	Gypsies and Travellers	13
3	Economy	15
3.1	Employment Land	15
3.2	Retail and Town Centres	16
3.3	Tourism	17
3.4	Youth Employment	17
4	Natural Environment	19
4.1	Public Open Space	19
4.2	Local Green Spaces in Neighbourhood Development Plans	19
4.3	Strategic Landscapes	19
4.4	Sites of Special Scientific Interest	19
4.5	Local Wildlife Sites and Local Geological Sites	19
5	Community	22
5.1	Sports & Leisure Facilities	22
5.2	Mortality Rates	22
5.3	Index of Multiple Deprivation	22
5.4	Community Facilities	22
5.5	Schools	23
5.6	Qualifications	23
5.7	Secure by Design Award	23
5.8	Sheltered Housing Units	24
6	Connections	26
6.1	Highways Improvements	26
6.2	Travel	26
6.3	Broadband	26
6.4	Telecoms	26

Contents

7 Built Environment and Heritage	28
7.1 Heritage	28
7.2 Design Awards	28
8 Environmental Resources	30
8.1 Renewable Energy	30
8.2 Minerals	30
8.3 Waste	31
8.4 Water Quality and Flood Risk	32
8.5 Agricultural Land Quality	32
9 Future Monitoring	34
9.1 Indicators	34
10 Development Plan Documents	36
10.1 Local Development Scheme	36
11 Duty to Cooperate	38
12 Neighbourhood Planning	40
13 Appendices	42

1 Introduction

1 Introduction

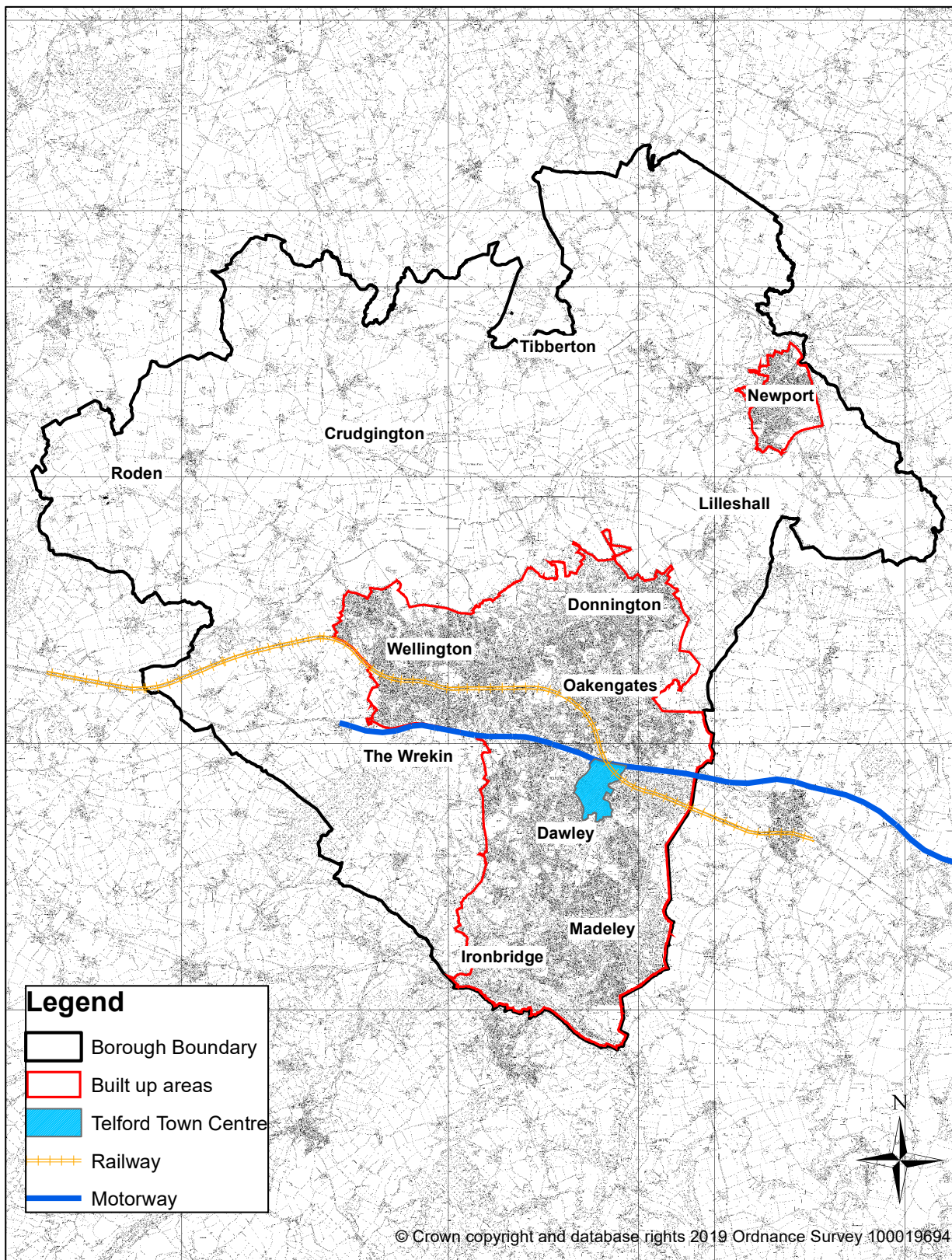
1 Introduction

1.0.1 The Annual Monitoring Report (AMR) reviews Plan-making progress and assesses the implementation of adopted planning policies for the Borough of Telford & Wrekin. This report covers the financial year of 1 April 2021 - 31 March 2022 unless otherwise stated. The AMR refers to policies in the Telford & Wrekin Local Plan 2011-2031 which was adopted in January 2018 and where possible, it sets out the monitoring data by the three Local Plan areas of Telford, Newport and the rural area, as defined on the Map of the Borough (Map 1).

1.0.2 The Council is required to make its AMR publicly available under Regulation 34 of the Town and Country Planning (Local Planning) (England) Regulations 2012. The AMR must be published at least annually and include information on progress with development plans and related activities. To aid monitoring, a set of indicators linked to the Local Plan objectives have been established. These indicators are set out in Appendix A of the Local Plan and are reported on in this report.

1.0.3 For further information on planning policy for Telford & Wrekin, please visit the Council's website⁽¹⁾.

Map 1 The borough



Telford & Wrekin

Drawn by: JB
14th July 2021

2 Housing

2 Housing

2

2 Housing

2.0.1 This section provides information related to the progress of housing delivery in Telford & Wrekin for the monitoring year 2021-2022.

2.1 Housing Completions and Commitments

2.1.1 Table 2.1 shows the rate of net housing completions during the Local Plan period since 2011. The information is split by Local Plan strategy area - Telford, Newport and the rural area.

Table 2.1 Housing Completions by Local Plan Strategy Area 2011-2022

	Telford	Newport	Rural Area	Total
2011-2012	622	82	16	720
2012-2013	589	14	4	607
2013-2014	788	39	15	842
2014-2015	946	87	41	1,074
2015-2016	1,031	204	20	1,255
2016-2017	944	175	29	1,148
2017-2018	802	201	64	1,067
2018-2019	1,127	136	82	1,345
2019-2020	944	5	42	991
2020-2021	684	34	99	817
2021-2022	1,106	167	200	1,473
Total	9,583	1,144	612	11,339

2.1.2 Recent years have continued to see a high delivery rate of new dwellings. In the year 2021-2022 there were 1,473 net dwelling completions with the majority delivered in the Telford built-up area.

2.1.3 Table 2.2 shows the housing commitments at the end of March 2022 which comprises of dwellings under construction and dwellings with planning permission but not started. There were 1,497 dwellings under construction with the majority being located in the Telford built-up area. On this basis it is not unreasonable to suggest that completions will continue to meet the Local Plan housing requirement for the Borough (864 dwellings per year) in the coming year.

2 Housing

Table 2.2 Housing commitments (under construction and not started) at March 2022

	Under construction	Not started
Telford	1,131	4,407
Newport	169	525
Rural	197	368
Borough total	1,497	5,300

2.1.4 The total number of dwellings not yet started at March 2022 was 5,300. The majority of this supply continues to be in Telford town. This is broadly consistent with the Local Plan distribution of housing across the borough.

2.1.5 Details of individual housing site completions and commitments for 2022 are provided in the appendices to this report.

Affordable Housing

2.1.6 Table 2.3 shows the amount and tenure of affordable homes completed by developers in the year 2021-2022. Please note that these figures are part of the overall completions figure (1,473 dwellings) as stated in Table 2.1. This is only a snapshot over one year, whereas the delivery of affordable housing on some sites may extend over several years and phases, both on large and small sites

Table 2.3 Affordable housing developer completions, 2021-22

Tenure	Social rent	Affordable rent	Shared ownership	Intermediate rent	TOTAL
TOTAL	27	371	89	0	487

2.1.7 The amount of affordable housing completed and transferred to Registered Providers in 2021-2022 was 397 homes, this represents 27% of the overall net completions for the year. These figures include dwellings provided as part of an affordable housing schemes and also sites where a contribution was provided through a Section 106 legal agreement. It also captures housing secured through Homes England Grant. Table 2.4 shows that since the beginning of the Local Plan period in 2011 approximately 3,401 affordable dwellings have been delivered and transferred to Registered Housing Providers across Telford and Wrekin, an average of 311 dwellings each year.

Table 2.4 Affordable housing completions 2011-2022

Year	Total affordable housing completions per year
2011-2012	275
2012-2013	211

2 Housing

2

Year	Total affordable housing completions per year
2013-2014	319
2014-2015	427
2015-2016	343
2016-2017	301
2017-2018	290
2018-2019	322
2019-2020	293
2020-2021	223
2021-2022	397
Total 2011-2022	3,491

New Dwellings on Previously Developed Land

2.1.8 Table 2.5 shows the number and percentage of new dwelling completions on previously developed land and green field sites during the Local Plan period. Since 2011 there has on average been a near equal split between housing completions on previously developed land (48%) and greenfield land (52%). There was a higher proportion of development on greenfield land in recent years due to the build out of large strategic sites within the built up area of Telford, the 2021-22 figure shows that as these have been delivered there has been an increase in the proportion of development of previously developed land.

2 Housing

Table 2.5 Dwelling Completions by Land Type 2011-2022

	Greenfield		Previously Developed Land	
	Number	Percentage	Number	Percentage
2011-2012	190	26	530	74
2012-2013	269	44	388	56
2013-2014	555	66	287	34
2014-2015	588	55	486	45
2015-2016	562	62	693	38
2016-2017	564	49	584	51
2017-2018	629	59	438	41
2018-2019	943	70	402	30
2019-2020	540	54	451	46
2020-2021	603	74	214	26
2021-2022	516	35	957	65

2.2 Housing Land Provision 2021

2.2.1 The housing trajectory makes certain assumptions regarding existing and future land supply based on the housing sources in Table 2.6. It is assumed that the residual supply in Table 2.6 will come forward during the plan period; this target has reduced in recent years through the delivery of new sites. Given the inclusion of non-implementation rates on future sources of supply, as detailed in Table 2.6, this is considered to be a worst-case scenario and it is likely that overall housing land supply, including from site allocations, will be sufficient to deliver the housing requirement.

2.2.2 Details of individual site completions and commitments for 2022 are in the appendices to this report.

Table 2.6 Housing land provision for the borough 2011-31 (at 31 March 2022)

		Gross	Net
A	Net completions (2011-22)		11,339
B	Dwellings with planning permission (under construction)		1,497
C	Dwellings with planning permission (not started)	5,300	
D	Less 20% allowance for non-implementation	1,060	4,240
E	Total existing supply (A+B+D)		17,076
F	Supply from resolution to grant sites	259	
	Less 20% allowance for non-implementation	52	207
G	Telford & Wrekin Local Plan site allocations	186	
	Less 20% allowance for non-implementation	37	149
H	Windfall allowance (sites 0.1 ha or less)		240
I	Total future supply (F+G+H)		596
J	Total housing land provision (2011-2031) (E+I)		17,672
K	Overall housing target for the period 2011-2031		17,280
L	Residual supply from any other sources including additional allocations (K-J)		-392

2.2.3 This evidence shows that the housing land supply needed to deliver the local plan housing requirement has already been met.

2.2.4 The Council is required to identify and update annually a supply of specific deliverable sites sufficient to provide five years' worth of housing against its housing requirement. The purpose of the five year housing land supply is to provide an indication of whether there are sufficient sites available to meet the housing requirement set out in the Telford & Wrekin Local Plan for the next five years.

2.2.5 The Council prepares a statement each year setting out its housing land supply position over the next five years. The annual statement clarifies the methodology and assumptions used and these are based on national planning policy and guidance. The 2022 Housing Land Supply Statement demonstrates that the Council has in excess of a five year housing land supply and can be viewed on its website ⁽²⁾.

2 Housing

2.3 Housing Trajectory

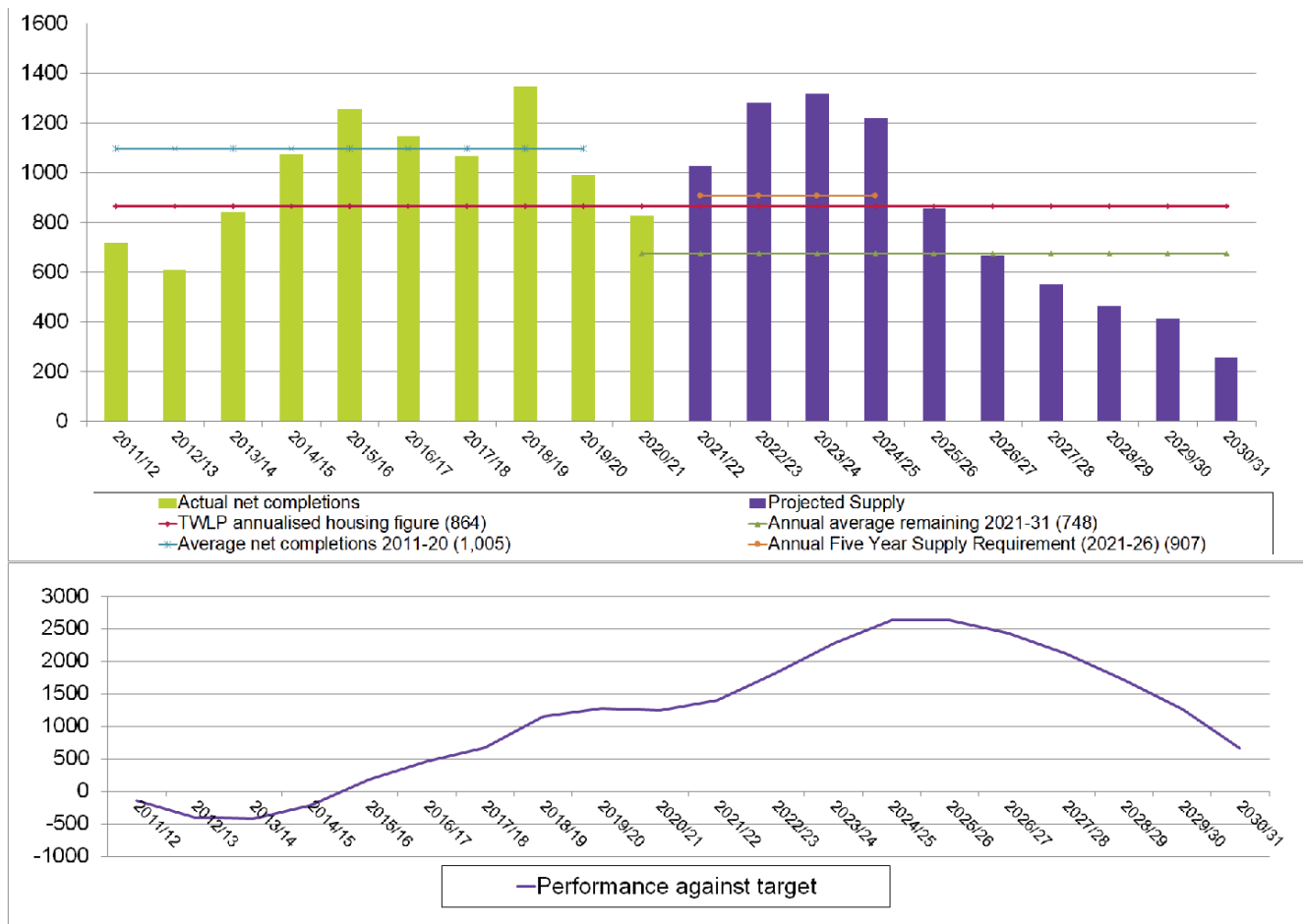
2.3.1 The housing trajectory assumes a level of supply necessary to deliver the Local Plan housing requirement of 17,280 net new dwellings by 2031. The figure below illustrates the number of completions that could be expected during the remainder of the plan period, projected forward from the end of March 2023. The performance against target measure illustrates the likely progress towards achieving the planned level of growth over the plan period.

2.3.2 The period covering 2023 to 2027 has been informed by an assessment of the likely delivery from identified sites as part the Council's five year housing land supply update (see above). Housing delivery is expected to exceed the annual requirement for the foreseeable future. The latest position demonstrates there is a robust housing land supply.

2.3.3 The housing trajectory makes certain assumptions regarding existing and future land supply. This includes a notional supply from other sources such as site allocations which at 800 dwellings (see Table 2.6) helps towards achieving the housing requirement. The calculations have been made on the assumption that, beyond a small allowance for windfall housing coming forward (equivalent to 30 dwellings per year over eight years) no additional land on unallocated sites (without planning permission) will come forward before 2031. Consequently, this is considered to be a worst-case scenario and it is likely that overall housing land supply, including from site allocations, will be sufficient to deliver the housing requirement.

Picture 1: Housing Trajectory

Picture 1



2.4 Gypsies and Travellers

2.4.1 The Gypsy and Traveller Accommodation Assessment for Telford & Wrekin (2014) identified the following net need over the plan period to 2031:

- 32 permanent pitches; and
- 11 transit pitches.

2.4.2 There have been no additional planning applications for gypsy and traveller accommodation during the 2021-2022 monitoring year.

3 Economy

3 Economy

3.0.1 The information and data set out in this section has been obtained from planning application monitoring and from the Office for National Statistics through their NOMIS website ⁽³⁾.

3.1 Employment Land

3.1.1 The Telford & Wrekin Local Plan sets out an employment land requirement of 76 hectares of up to 2031, with 149 hectares allocated across several sites. For the 2021-2022 monitoring year employment uses are defined by the planning use classes B1(a) offices (other than a use within class A2 financial and professional services), B1(b) research and development of products or processes, B1(c) light industry, B2 general industry and B8 warehousing and distribution.

3.1.2 Table 3.1 shows the net employment floorspace completions during the year, having deducted floorspace losses. Approximately 27,943 net square metres of employment land was delivered during the survey year.

Table 3.1 Employment floorspace completions 2021-2022 (square metres)

	B1(a) offices	B1(b) research and development	B1(c) light industry	B2 general industry	B8 warehousing and distribution	Totals
Telford	170	0	3,358	5,124	15,439	24,091
Newport	90	0	0	0	0	90
Rural area	0	0	0	629	3,133	3,762
Totals	260	0	3,358	5,753	18,572	27,943

3.1.3 Table 3.2 below provides a summary of the committed (sites with permission but not started) employment floorspace by Local Plan area. This is a summary of new build land not started and a detailed site breakdown is provided in Appendix 6a of this report.

3 Economy

Table 3.2 Employment new build floorspace - not started (square metres)

	B1(a) offices	B1(b) research and development	B1(c) light industry	B2 general industry	B8 warehousing and distribution	Totals
Telford	1,782	0	0	7,929	83,556	93,267
Newport	0	0	0	0	5,500	5,500
Rural area	0	0	800	1,448	7	2,255
Totals	1,782	0	800	9,377	89,063	101,022

3.1.4 This information shows that Telford town has the majority of committed employment floorspace in the borough. It is acknowledged that, similar to housing, there have been a large number of extant section 7(1) consents for employment land and most of these have been allocated in the Local Plan. The majority of Local Plan employment allocations are either completed, under construction, granted planning permission or reserved for the expansion of existing businesses. There is a limited amount of new build employment land available outside of the town.

3.1.5 The Council continues to take a proactive role in the delivery of new employment land through the Telford Land Deal with Homes England. The Land Deal is a new model of public land disposal which through upfront investment into site preparation and marketing of sites has helped accelerate the delivery of commercial and residential sites across the borough. Through the Land Deal the Council has worked to de-risk several sites and bring them to the market. This has led to significant levels of inward investment into areas such as Hortonwood, T54 and Donnington Wood.

3.2 Retail and Town Centres

Town Centre Health Check

3.2.1 The Council monitors the proportion of vacant street level property and the following table summarises the key findings for the town centres and high streets of Telford and Newport. The survey area is based on the information in the Retail & Leisure Capacity Study and Health Check (2014) available on the Council's website ⁽⁴⁾.

4 https://www.telford.gov.uk/info/20452/research_and_information/551/retail

Table 3.3 Town centre vacancy levels

Centre	Total number of units (Source: site visit, March/April 2013 - Experian Goad)	Total amount of floorspace (Source: site visit, March/April 2013 - Experian Goad)	Occupancy rates 2019 (Sources: Telford Shopping Centre and site survey)	Occupancy rates 2022 (Sources: Telford Shopping Centre and site survey)
Telford town centre	179	75,400	83.5%	Data not available
Newport high street	164	30,570	98%	94%

3.2.2 The Telford Shopping Centre occupancy data for 2022 was unavailable; an update will be provided in the 2023 AMR. The occupancy rate in Newport remains high at 94% for 2022. The Council will continue to monitor data to understand the occupancy rates and mix of uses within the centres.

3.3 Tourism

Tourist Developments

3.3.1 No additional tourist developments were completed in the 2021-2022 monitoring year.

Hotel Bed Spaces

3.3.2 Overall there has been a net increase in the number of hotel bed spaces during the plan period. The overall net increase is expanding the leisure, tourism and business visitor offer and supporting Destination Telford.

3.4 Youth Employment

3.4.1 On a monthly basis the Office for National Statistics (ONS) publish a range of labour market data via their NOMIS website ⁽⁵⁾.

3.4.2 The youth employment profile is largely based on data published via NOMIS and summarises the key messages and trends for Telford and Wrekin around youth employment.

3.4.3 The boroughs rate of youth unemployment was 23.5% in December 2020, an increase from 19.8% in March 2020. This is higher than the West Midlands, 14.7%, and England, 13.7%.

4 Natural Environment

4 Natural Environment

4 Natural Environment

4.1 Public Open Space

4.1.1 The Council monitors the provision of new public open space in the borough from major developments each year. Provision is made either through a Section 106 legal agreement or another measure.

4.1.2 Policy NE4 in the Local Plan requires major development to provide and/or contribute to the provision of multi-functional open space which serves and meets the needs of the development as well as local and wider needs. All major developments therefore contribute to public open space provision, with a preference for on-site provision in most situations.

4.1.3 For the 2021-2022 monitoring year a total of £135,000 developer contributions was secured for offsite recreational uses, where applicants paid funds to the Council for public open space provision elsewhere in the borough in lieu of on-site provision. This figure is mainly providing improvements to the quality of the existing provision rather than providing new public open space (although there are some occasional exceptions).

4.2 Local Green Spaces in Neighbourhood Development Plans

4.2.1 One of the Local Plan monitoring indicators is the number of local green spaces delivered in neighbourhood development plans. The local green space designation allows communities to identify and protect green areas of particular importance to them. There have been no new neighbourhood plans brought into force during 2021-2022. During 2018-2019 27 individual areas were designated as local green spaces through new neighbourhood plans in Edgmond, Lilleshall and Newport.

4.3 Strategic Landscapes

4.3.1 Policy NE7 in the Local Plan designates two strategic landscapes in Telford, at Wrekin Forest and Weald Moors. The policy states that the Council will protect the borough's strategic landscapes from development which would cause detrimental change to the quality of the landscape. No planning applications were refused on design grounds in the strategic landscapes during 2021-2022.

4.4 Sites of Special Scientific Interest

4.4.1 There are eight Sites of Special Scientific Interest (SSSI) in the borough covering 517 ha of land. The condition of SSSI's is monitored by Natural England. 59% of the SSSI are in a favourable condition.

4.5 Local Wildlife Sites and Local Geological Sites

4.5.1 There are 50 Local Wildlife Sites and 24 Local Geological Sites in the borough. These sites are a mixture of private and public ownership.

4.5.2 Of the 50 Local Wildlife Sites, 31 are appropriately managed, similar to 2020. The test for appropriate management is that more than 50% of the area of the site has a site management plan, is in a relevant agri-environment or woodland grant scheme or has received, and is known to be acting on, management advice (for example, from Shropshire Wildlife Trust). 28 sites which are appropriately managed in the borough are owned by Telford & Wrekin Council and

4 Natural Environment

managed either by the Council directly or through a management agreement with Shropshire Wildlife Trust, or a long term lease with Severn Gorge Countryside Trust. Three privately owned sites are also appropriately managed. The remaining 19 sites are in private ownership and their management status is largely unknown. The Council will engage with private landowners as and when the opportunity arises.

4.5.3 There are 24 Local Geological Sites - 14 of which are appropriately managed, similar to 2020. The test for appropriate management is where Shropshire Geological Society has visited the site within the last five years, deemed the notable features to be in good condition and/or provided the owner with formal advice which is being acted upon. Shropshire Geological Society is working hard to secure access to these sites, and to establish relationships with landowners to achieve suitable management.

4.5.4 A total of 60% of Telford & Wrekin's Local Sites (wildlife and geological sites) are appropriately managed. This is a significant achievement given that the national average when last published by Defra was 48% ⁽⁶⁾. The high number of sites being appropriately managed for nature conservation and geological heritage is largely due to the unique nature of Telford as a New Town where areas of land are owned by the Council. Several Local Sites are also Local Nature Reserves (or in the process of being declared LNR) and engagement with community volunteer groups, Shropshire Wildlife Trust and the Severn Gorge Countryside Trust is high and achieves excellent results for biodiversity and geodiversity.

4.5.5 The Council recognises the importance of locally valued green spaces and has identified 200 Green Guarantee Sites which include a mix of allotments, amenity spaces, formal parks and woodland. The Council is investing in improving the value of these sites.

6 Nature Conservation: Local Sites in Positive Conservation Management in England, 2008/09 to 2017/18 Published by Defra January 2019

5 Community

5 Community

5 Community

5.1 Sports & Leisure Facilities

5.1.1 One of the Local Plan objectives is to enable healthier lifestyles and improve the health and well-being of the population. The Local Plan monitors use of Council-owned sports and leisure facilities. Due to the continuing impacts of the COVID-19 pandemic, many of the boroughs sports and leisure facilities had limited operating times and reduced capacities as they slowly returned to normal operating procedures. As a result of this, visits to these facilities continued to be lower than previous years. Accurate figures were not available at time of writing, however this data will be provided as part of next years monitoring report, which will be the first full year 'post-Covid'.

5.2 Mortality Rates

5.2.1 The age-standardised mortality rate in 2020 for Telford & Wrekin was 1,155.4 persons per 100,000 population (Office for National Statistics). This is above the 2019 figure of 1,029 persons and the Local Plan baseline figure of 1,084.5 persons in 2013. It is above the West Midlands figure of 954.0 and the England figure of 918.0 persons per 100,000 population for 2019.

5.3 Index of Multiple Deprivation

5.3.1 The most recent set of results from the Index of Multiple Deprivation was in 2019. There were 18 Lower-layer Super Output Areas (LSOA) in the 10% most deprived wards in the borough, in the following wards: (Brookside x2, College, Madeley & Sutton Hill x4, Dawley & Aqueduct x2, Donnington, Hadley & Leegomery, Malinslee & Dawley Bank x3, Woodside x4). This is an increase of three LSOA from the results of the 2015 Index.

5.4 Community Facilities

5.4.1 The NPPF advises local planning authorities to plan positively for the delivery of social and cultural facilities for the community's needs and to guard against their loss. The Telford & Wrekin Local Plan monitors any losses in community facilities.

5.4.2 The Local Plan defines 'community facilities' as:

- Pre-school, primary, secondary and further education facilities;
- Healthcare facilities such as GPs and health centres;
- Emergency services (police, fire and ambulance);
- General facilities such as community centres and halls and other spaces where community groups can meet;
- Places of worship, cemeteries and crematoria;
- Sports and leisure facilities, including the arts, cinemas and performance spaces; and
- Libraries.

5.4.3 In 2021-2022:

There have been 6 planning applications related to new build community facilities:

5 Community

5

- TWC/2021/0046 Erection of 233 dwellings, 76 unit care home (Use Class C2) including Community Hub (Use Class E(b)), 20 unit supported accommodation, areas of public open space and LEAP, access, drainage and associated works
- TWC/2021/0722 Erection of 10no new dwellings and conversion of existing listed building to provide 3 new dwellings (Use Class C3), community facility (Use Class F2 (b)) and parish council offices (Use Class E(g)) together with associated landscaping (Full Planning Application) *** AMENDED DESCRIPTION / PLANS RECEIVED ***
- TWC/2021/0724 Conversion of existing building to provide 3no new dwellings, community facility and parish council offices with external and internal changes (Listed Building Application) *** Amended Description / Plans Received ***
- TWC/2021/0871 Erection of a standalone three storey teaching block with changing block, 3G Pitch with 6no 15m floodlights, two single storey in-fill extensions to the existing school, fencing to grass pitches outside school boundary, a new 5v5 mini soccer pitch, and associated landscape works **Amended red line boundary, amended plans and supporting information**
- TWC/2021/1146 Reserved matters application pursuant to outline planning permission TWC/2014/0113 (Erection of a mixed use development) for the erection of a primary school including details of appearance, landscaping, layout and scale
- TWC/2021/0263 Reserved matters application pursuant to TWC/2014/0113 for the development of a new Sports and Social Club Pavilion, sports pitches/greens, car parking, cycle parking, landscaping and associated works including details for appearance, landscaping, layout and scale *** Amended site plan ***

5.4.4 There has been 1 change of use either to or from community facilities, resulting in no overall loss of community facility :

- TWC/2021/0781 Conversion of former library to 1no. Commercial Unit (Class E), 6no. residential apartments (Class C) and a second floor extension

5.5 Schools

5.5.1 The Local Plan has an objective to enhance the borough's education and training facilities. The Local Plan monitors the number of schools built during the plan period. During the 2020-2021 survey period there have been no new schools built in the borough; however, several extensions to existing facilities have been completed including The Burton Borough School, St George's C of E Primary School and Ladygrove Primary School.

5.6 Qualifications

5.6.1 The ONS Annual Population Survey states that between the period of January 2020 - December 2020 51.7% of the borough has a National Vocational Qualification (NVQ) Level 3 or above. This is below the West Midlands rate of 56.8% for the same period, and below the England rate of 61.4%. The Telford & Wrekin figure is an increase from 2011 when 42.8% of residents had an NVQ Level 3 or above.

5.7 Secure by Design Award

5.7.1 One of the Local Plan objectives is to support the creation of safe and secure environments. The Local Plan monitors the number of Secure by Design schemes awarded. This is a police initiative that improves the security of buildings and their immediate surroundings

5 Community

to provide safe places to live, work, shop and visit. West Mercia Police confirmed that five developments in the borough were awarded the Secure by Design accreditation during the 2020-2021 monitoring year.

5.8 Sheltered Housing Units

5.8.1 The Local Plan monitors the number of sheltered housing units, under Class C2 - residential institutions, delivered. Table 5.2 below lists residential care schemes completed during the 2020-2021 survey year.

Table 5.1 Sheltered housing units granted permission during 2020-2021

Reference	Location	Number of bedspaces
TWC/2021/0046	Land North/East of Lodge Road Caravan Site, Donnington Wood Way, Donnington Wood	76
TWC/2021/0149	Henley House, Church Road, Trench	4
TWC/2020/0336	10 Bartlett Road, Dawley	4
TWC/2021/0413	Braeburn, Mill Lane, Wellington, Telford	2
TWC/2021/0979	Fielden House, 30 Chetwynd Aston, Newport	8
TWC/2021/1051	41 & 42 Attwood Terrace, Dawley, Telford	4

6 Connections

6 Connections

6 Connections

6.1 Highways Improvements

6.1.1 The Council monitors the amount of Marches Local Enterprise Partnership (LEP) funding secured for highways improvements across the borough. During the previous financial year the Council secured £6.34 million from funding bids to the LEP which is to be spread over four years on highways improvements. The figures remain as stated for the 2020-2021 monitoring year.

6.2 Travel

6.2.1 As with the previous AMR the Council monitors the population travelling to work by different transport means through the 2011 Census. At the last Census 5.38% of the borough travelled to work by train, light rail, tram, bus, minibus or coach. 66.8% of the borough population travelled to work by car or van, including passengers. This data will be updated through the next Census in 2021.

6.3 Broadband

6.3.1 The Local Plan has an objective to enhance broadband and mobile networks across the borough. Superfast Telford is a £5.6m programme jointly funded by Telford & Wrekin Council, Broadband Delivery UK (BDUK) and delivery partners BT. The project will enable more than 9,000 residents and businesses that cannot currently access faster fibre broadband to be able to do so through an open access network of Internet Service Providers.

6.3.2 The Local Plan baseline figure was 86% of the borough having fibre broadband. The latest position is that 98.47% of the borough has access to Superfast broadband (based on speeds of 24 mbps or greater). If the European standard of 30 mbps or greater is applied, 98.3% of the Borough has access to Superfast broadband.

6.4 Telecoms

6.4.1 The Local Plan monitors mobile networks across the borough. During the 2020-2021 monitoring year there have been no new applications for new telecoms apparatus in the rural area of the borough.

7 Built Environment and Heritage

7 Built Environment and Heritage

7 Built Environment and Heritage

7.1 Heritage

7.1.1 Telford & Wrekin benefits from a rich and diverse heritage. This includes the Ironbridge Gorge World Heritage Site, urban conservation areas of Newport, Wellington and Horsehay, rural conservation areas in Edgmond, High Ercall and Wrockwardine together with several listed buildings, locally listed buildings, scheduled monuments and archaeological features. The historic environment is important not only for its historical significance but also in its contribution to community identity, education and environmental quality.

7.1.2 The Local Plan heritage objective is to safeguard the character and setting of the borough's built and natural heritage, including Ironbridge Gorge World Heritage Site and the Wrekin. The Council has prepared conservation area character appraisals and management proposals; a summary is provided in Table 7.1. Over 86% of the conservation areas (over 96% in terms of area) are both in place. The Newport conservation area character appraisal is forthcoming.

Table 7.1 Conservation areas in Telford and Wrekin (status as of March 2021)

Conservation area	Hectares	Character appraisal	Management proposals
Edgmond	24.2	Yes	Yes
Newport	22.4	No	No
Wrockwardine	26.9	Yes	Yes
High Ercall	9.5	Yes	Yes
Wellington	8.2	Yes	Yes
Horsehay	25.1	Yes	Yes
Severn Gorge	417.9	Yes	Yes
Borough	534.2	-	-

7.2 Design Awards

7.2.1 The Council monitors the number of schemes in the borough with design awards. No schemes have been given any design awards in the 2020-2021 monitoring year.

8 Environmental Resources

8 Environmental Resources

8 Environmental Resources

8.1 Renewable Energy

8.1.1 The Local Plan recognises and promotes sustainable planning through both passive design (such as accessible locations, layout, building orientation and energy efficiency) and promotes active (such as the use of photovoltaic panels) measures. Development which has involved the delivery and use of renewable energy forms part of this objective. The Council also runs its own solar farm at Wheat Leasows.

8.1.2 Table 8.1 lists planning applications approved for renewable energy schemes during the survey period 2020-2021. The permissions provide a further indication of the borough's commitment to renewable energy. This number is down from four approved schemes during 2019-2020 but equal to three schemes in the baseline year of 2015.

Table 8.1 Renewable energy schemes approved in Telford and Wrekin during 2020-2021

Application reference	Description
TWC/2020/0293	Erection of ground mounted solar photovoltaic panels and associated infrastructure
TWC/2020/0851	Installation of a renewable energy scheme comprising ground-mounted photovoltaic solar arrays and battery-based electricity storage containers together with transformer stations, access, internal access track, landscaping, security fencing, security measures, access gate, and ancillary infrastructure
TWC/2020/0067	Construction of agricultural storage building including provision of biomass boiler and associated woodchip store with concrete apron to the front (Part Retrospective)

8.2 Minerals

8.2.1 Shropshire Council and the borough of Telford & Wrekin are combined as a single sub region for the purpose of aggregates supply. The Government requires that minerals planning authorities should plan for a steady and adequate supply of aggregates.

Primary aggregates

8.2.2 The majority of aggregate production takes place in the area administered by Shropshire Council. There are no sand and gravel workings at present in Telford & Wrekin, but there is crushed rock from a site at Leaton, west of Wellington. The site contributes about a quarter of the annual sales. Both administered areas contain facilities where construction, demolition and excavation waste is recycled to produce aggregates. Headline performance data for 2020-2021 was unavailable at the time of publication and an update will be provided in the 2022 AMR. Please refer to the 2019 AMR for the most recently published data.

8 Environmental Resources

Secondary and recycled aggregates

8.2.3 Figures for secondary and recycled materials used as aggregates are currently only collected nationally and sub-nationally. The most recent information indicates that 4.37 million tonnes of construction and demolition waste was generated in Shropshire, Staffordshire and Telford & Wrekin in 2005 (Survey of Arising and Use of Alternatives to Primary Aggregates in England [CLG 2007]). Limited information is available for Shropshire and Telford & Wrekin specifically.

Minerals safeguarding policy

8.2.4 Policy ER2 in the Local Plan protects areas of minerals resources from unnecessary sterilisation by other development, subject to certain criteria. No applications were approved during the 2020-2021 monitoring year that were contrary to the policy.

8.3 Waste

8.3.1 Table 8.3 summarises the amount of municipal waste arising in the borough of Telford & Wrekin. There has been an increase in the total waste arising during the 2020-2021 monitoring year and this is due to an increase in the amount of recycled waste.

Table 8.2 Amount of municipal waste arising in Telford & Wrekin

	Year	Landfill	Incineration with EfW*	Incineration without EfW*	Recycled/composted	Other	Total waste arisings
Amount of waste arising in tonnes	2007	56,153.80	0	0	29,727.07	0	85,880.87
	2008	63,216.15	122.83	0	30,214.81	0	93,553.79
	2009	56,693.18	89.83	0	31,560.96	0	88,343.97
	2010	54,390.18	61.44	0	35,064.21	0	89,519.99
	2011	51,520.03	58.74	0	37,103.94	0	88,682.71
	2012	50,589.32	82.31	0	35,346.84	0	86,018.47
	2013	46,819.80	196.63	0	34,995.94	0	82,110.39
	2014	45,479.54	74.28	0	36,733.24	0	82,287.06
	2015	44,180.63	745.71	0	37,975.10	0	82,901.44
	2016	44,411.85	1,279.56	0	38,742.09	0	84,433.50
	2017	23,955.84	21,295.74	0	38,326.31	0	83,577.89
	2018	1,120.57	41,535.62	0	34,797.40	0	77,453.59
	2019	1,541.22	40,933.28	0	37,584.99	0	80,059.49
2020	1,250.53	39,376.62	0	40,126.01	0	80,753.16	

* - EfW is energy from waste, for example as electricity or heating.

8.3.2 The recycled/composted column includes the re-use figure. Since 2007 the amount of waste sent to landfill has fallen whilst the amount of waste recycled, re-used or composted has increased. Please note the large change in landfill and incineration tonnages for 2017 onwards

8 Environmental Resources

was due to Veolia taking over waste transportation and as a general rule they incinerate general waste rather than taking it to a landfill. Local incineration is mainly provided by sites in Shrewsbury and Staffordshire.

8.4 Water Quality and Flood Risk

8.4.1 The National Planning Policy Framework (NPPF) states that inappropriate development in flood risk areas should be avoided by directing development away from areas of highest risk, but where development is required making it secure without increasing flood risk elsewhere. The Environment Agency provide advice on applications related to flood risk or water quality via their website.

8.4.2 In the borough of Telford & Wrekin, no planning permissions were granted during the 2020-2021 monitoring year which were contrary to Environment Agency advice on flood risk or water quality.

8.4.3 The Council acknowledges that the Environment Agency state that planning application reference TWC/2017/0569 was permitted contrary to the Environment Agency's advice. However, this application remains open without a decision. Following initial concerns raised by the Environment Agency, the developer submitted further details which the Environment Agency have supported subject to conditions.

8.5 Agricultural Land Quality

8.5.1 The Local Plan has an objective to minimise the impact of new development on natural resources and encourage their efficient use, retaining high quality soil and best and most versatile agricultural land. During the 2020-2021 monitoring year no planning applications were refused on the grounds of agricultural land quality.

9 Future Monitoring

9 Future Monitoring

9 Future Monitoring

9.1 Indicators

9.1.1 There are some indicators where data is not available. These indicators are listed below.

Table 9.1 Indicators where data is not currently available

Indicator	Reason
Number of agreements with developers to support local employment and number of apprenticeships	No data currently available
Mix of homes in all major planning applications at reserved matters stage	No data currently available
New developments in Telford Town Centre, Market Towns and District Centres with a mix of uses	No data currently available

10 Development Plan Documents

10 Development Plan Documents

10 Development Plan Documents

10.0.1 The Council's development plan at April 2021 comprised the following documents:

- Telford & Wrekin Local Plan (2018);
- The Madeley neighbourhood development plan (2015);
- The Waters Upton neighbourhood development plan (2016);
- The Edgmond Parish neighbourhood plan (2018);
- The Newport neighbourhood development plan (2018); and
- The Lilleshall Parish neighbourhood plan (2018)

10.0.2 The Council will also prepare new Supplementary Planning Documents (SPDs) to support the Local Plan. No SPD's were adopted this year.

10.1 Local Development Scheme

10.1.1 The Local Development Scheme (LDS) explains which planning policy documents make up the Telford & Wrekin Development Plan and is a requirement of the Planning and Compulsory Purchase Act 2004 (as amended). The LDS identifies which development plans will be produced, in which order and when.

10.1.2 The current LDS is available on the Council's website⁽⁷⁾.

7 http://www.telford.gov.uk/info/20172/planning_policy_and_strategy/542/local_development_scheme

11 Duty to Cooperate

11 Duty to Cooperate

11 Duty to Cooperate

11.0.1 Under Section 110 of the Localism Act 2011 Councils and public bodies have a legal duty to 'engage constructively, actively and on an ongoing basis' in the preparation of Local Plan documents, including in the preparation of evidence to underpin these documents. The NPPF states that local planning authorities are under a duty to cooperate with each other, and with other prescribed bodies, on strategic matters that cross administrative boundaries.

11.0.2 The Council engaged constructively, actively and on an on-going basis in the preparation of the Local Plan and met the duty to cooperate. It has, and continues to, engage with immediate neighbouring authorities, the West Midlands region and other relevant bodies in order to address specific strategic matters. Examples include joint working in respect of the Ironbridge Gorge World Heritage Site and the Shropshire Hills Area of Outstanding Natural Beauty, as well as co-operation with bodies such as Natural England and the Environment Agency in respect of specific Local Plan issues such as biodiversity, waste and water planning and flood risk assessment.

12 Neighbourhood Planning

12 Neighbourhood Planning

12 Neighbourhood Planning

12.0.1 Town and Parish Councils (or neighbourhood forums in other areas without parishes) prepare neighbourhood development plans and Neighbourhood Development Orders. A neighbourhood development plan can enable communities to establish planning policies for development and use of land in their area. It can be detailed, or general, depending on what local people want and forms part of the Development Plan for Telford & Wrekin. For a neighbourhood development plan to be put in place it must satisfy several tests, including conformity with national planning policies and the strategic policies of the Telford & Wrekin Local Plan.

12.0.2 In accordance with the Localism Act (2011) and Neighbourhood Planning (General) Regulations (2012) the Parishes prepare these plans, rather than Telford & Wrekin Council, although the Council offers advice and assistance.

12.0.3 The borough has five made neighbourhood development plans in Madeley Town Council, Waters Upton Parish, Edgmond Parish, Newport Town Council and Lilleshall Parish. At this stage, no Neighbourhood Development Orders are proposed in Telford & Wrekin.

12.0.4 An additional four designated Neighbourhood Areas (in Donnington and Muxton, Ercall Magna, Stirchley and Brookside and Tibberton and Cherrington), have been designated and the parishes have been working towards producing neighbourhood development plans for their areas.

13 Appendices

13 Appendices

13 Appendices

13.0.1 The following appendices provide the sources of data which inform the tables included in this report. Please note that more recent planning application references with the TWC prefix are reverted back to W prefix. For example, TWC/2014/0001 becomes W2014/0001.

Appendix 1 - Residential Sites Completed in 2021/22

APP NO	Location	Total Unit Nos	Previous Comps	Private Comps	Affordable Comps	Telford	Newport	Rural	GF/BF
TWC/2015/0510	Land adjacent & rear of 11 & rear of Gable End, 9 Granville Avenue, Newport, Shropshire TF10 7DX	1	0	1	0		1		G
TWC/2017/1009	Land adjacent to 15 Fishers Lock, Newport, Shropshire TF10 7BY	1	0	1	0		1		B
TWC/2018/0138	Land to the North of Audley Avenue, Newport, Shropshire	102	15	22	0		22		G
TWC/2018/0560	5 Chetwynd End, Newport, Shropshire, TF10 7JJ	-1	0	-1	0		-1		B
TWC/2018/0659	Site of Plough Farm Nursery, Plough Lane, Newport, Shropshire TF10 8EQ	44	10	19	15		34		G
TWC/2018/0736	Land east of Lavender Leap, Plough Lane, Newport, Shropshire TF10 8BS	4	0	4	0		4		G
TWC/2018/0875	Site of Summer House Farm, Vineyard Road, Newport, Shropshire TF10 7DJ	1	0	1	0		1		G
TWC/2019/0569	Land To The North Of, Audley Avenue, Newport, Shropshire	113	0	67	19		86		B
TWC/2021/0067	Site of Lavender Leap, Plough Lane, Newport TF10 8BS	2	0	2	0		2		G
TWC/2019/0070	Site of Parkland House, The Car Auction Ltd & Land north of Audley Avenue Industrial Estate, Audley Avenue, Newport, Shropshire TF10 8BS	60	0	0	17		17		B
TWC/2014/0733	Land South of White House Farm, Cold Hatton, Telford TF6 6QU	2	1	1	0			1	G
TWC/2018/0760	Former Dairy Crest Ltd, Crudgington, Telford, Shropshire TF6 6HY	111	0	38	3			41	B
TWC/2018/0646	Site of Sunnyside Farm, Ellerdine Heath, Telford, Shropshire TF6 6RL	1	0	1	0			1	G
TWC/2018/1025	Site of Windy Oak Farm, 66 Ellerdine Heath, Telford, Shropshire TF6 6RN	5	0	2	0			2	G
TWC/2021/0050	Land between Horton Farm, 35 & 36 Horton Lane, Horton, Telford, Shropshire	1	0	1	0	1			G
TWC/2019/0714	Land adjacent Crown Farm & Swift Barn, Kynnersley, Telford, Shropshire TF6 6DX	1	0	1	0			1	G
TWC/2014/0492	Lubstree Park, Humber Lane, Preston, Telford, Shropshire TF2 8LW	8	3	5	0			5	G

TWC/2018/0620	Wharf House, Wappenshall Road, Preston upon the Weald Moors, Telford, Shropshire, TF6 6DE	0	-1	1	0			1	B
TWC/2018/1022	Site of Church Farm Yard, Preston Upon The Weald Moors, Telford, Shropshire	20	4	16	0			16	G
TWC/2019/0229	Site of Church Farm Yard, Preston Upon The Weald Moors, Telford, Shropshire	1	0	1	0			1	G
TWC/2018/1046	Site of Roden Nurseries, Roden Lane, Roden, Telford, Shropshire TF6 6BP	9	0	9	0			9	G
TWC/2017/0710	Land adjacent/rear of Chris Cottage & Nichol House, Rowton, Telford, Shropshire TF6 6QY	2	1	1	0			1	G
TWC/2018/0049	Site of Honey House, Tibberton, Newport, Shropshire TF10 8NZ	1	0	1	0			1	G
TWC/2018/0488	Site of Sutherland Farm, Back Lane, Tibberton, Newport, Shropshire TF10 8NX	5	0	5	0			5	G
TWC/2019/0252	Land East & South East of Sheldar/Covings/The Old Stables, Back Lane, Tibberton, Newport, Shropshire	15	7	3	5			8	G
TWC/2020/0493	Site of Field Gate House, 66 Back Lane, Tibberton, Newport, Shropshire	1	0	1	0			1	G
TWC/2020/0672	Site of 64 Plantation Road, Tibberton, Newport, Shropshire	1	0	1	0			1	G
TWC/2020/0846	Site of Honey House, Tibberton, Newport, Shropshire	1	0	1	0			1	G
TWC/2021/0682	Land adjacent 44 Cherrington Road, Tibberton, Newport, Shropshire TF10 8NY	1	0	1	0			1	
TWC/2017/0479	Site of Crescent Farm, Waters Upton, Telford, Shropshire TF6 6NP	1	0	1	0			1	G
TWC/2020/0360	Land between, 22a & 23 Waters Upton, Telford, Shropshire	1	0	1	0			1	G
TWC/2020/0779	Land rear of Cedar Lodge, Waters Upton, Telford, Shropshire	7	0	7	0			7	G
TWC/2020/0351	Site of Sutherland Farm, Back Lane, Tibberton, Newport, Shropshire	3	0	0	3			3	G
TWC/2021/0641	Site of 8 & 10 Shawbirch Road, Admaston, Telford, TF5 0AD	1	0	1	0	1			B
TWC/2019/0753	Land between Arleston Lane & Dawley Road, Arleston, Telford, Shropshire	142	0	74	0	74			G
TWC/2020/1021	Site of The Bungalow, Arleston Village, Arleston, Telford TF1 2LU	3	0	2	0	2			B
TWC/2018/0727	Land rear of 32 Bratton Road, Bratton, Telford, Shropshire	14	0	14	0	14			G

TWC/2020/0046	Land rear of 32 Bratton Road, Bratton, Telford TF5 0BT	1	0	1	0	1			G
TWC/2015/0843	Land off Peregrine Way, Leegomery, Telford, Shropshire	100	98	2	0	2			G
TWC/2021/0741	Site of 34 Nightingale Way, Apley, Telford TF1 6DT	1	0	1	0	1			B
TWC/2014/0575	Land adjacent 21, Allscott, Telford, Shropshire TF6 5EG	1	0	1	0			1	G
TWC/2019/0827	Former British Sugar site (Phase 1), Allscott, Telford, Shropshire	200	0	79	9			88	B
TWC/2021/0607	Former British Sugar site (Phase 1), Allscott, Telford, Shropshire	1	0	1	0			1	B
TWC/2018/0529	Sunnylands Farm, Wrockwardine, Telford, Shropshire TF5 0BJ	2	0	2	0			2	G
TWC/2021/0173	The Coach House, Wrockwardine, Telford, Shropshire TF6 5DG	-1	0	-1	0			-1	B
TWC/2017/0401	Land adjacent 8 Wrockwardine Road, Wellington, Telford, Shropshire TF1 3DB	2	0	2	0	2			G
TWC/2017/0454	Site of The Vineyard, North Road, Wellington, Telford, Shropshire	14	7	7	0	7			B
TWC/2017/0794	Land opposite College Farm House, Mill Lane, Wellington, Telford, Shropshire TF1 1PR	8	0	8	0	8			G
TWC/2018/0365	4A Bell Street, Wellington, Telford, Shropshire, TF1 1LS	2	0	2	0	2			B
TWC/2018/0694	Land adjacent 8 Bank Road, Wellington, Telford, Shropshire TF1 1SA	1	0	1	0	1			B
TWC/2019/0970	1 Crown Street, Wellington, Telford, Shropshire, TF1 1LP	3	0	3	0	3			B
TWC/2020/0362	69 & 69a King Street, Wellington, Telford, Shropshire TF1 1NS	2	0	1	1	2			B
TWC/2021/0133	2-4 Crown Street, Wellington, Telford, Shropshire TF1 1LP	3	0	3	0	3			B
TWC/2021/0413	Braeburn, Mill Lane, Wellington, Telford, Shropshire TF1 1PR	-1	0	-1	0	-1			B
TWC/2021/0519	11 Church Street, Wellington, Telford, Shropshire TF1 1DD	2	0	2	0	2			B
TWC/2021/0854	7 Crown Street, Wellington, Telford, Shropshire, TF1 1LP	4	0	4	0	4			B
TWC/2017/0643	Land to the North of Haygate Road, Wellington, Telford, Shropshire	289	219	0	40	40			G
TWC/2018/0658	Land rear of Charlton School, Off St Pauls Drive, Dothill, Telford, Shropshire TF1	54	52	0	2	2			G

TWC/2020/0026	Westmount, Bridge Road, Wellington, Telford, Shropshire TF1 1DZ	8	0	0	8	8			B
TWC/2020/0449	Site of 25 & 35A Hadley Park Road, Hadley, Telford, Shropshire	9	0	9	0	9			G
TWC/2018/0865	Site of Former Sutherland Co Operative Academy, Gibbons Road, Trench, Telford, Shropshire	123	25	21	0	21			B
TWC/2018/0596	Site of Caravan And Camping Centre, Stadium Way, Hadley, Telford, Shropshire TF1 5NN	26	0	0	26	26			B
TWC/2018/0523	Site of Fernleigh, The Fields, Donnington, Telford, Shropshire TF2 7PP	1	0	1	0	1			B
TWC/2020/0373	Site of former Coal Yard, Wellington Road, Donnington, Telford TF2 8AR	9	0	9	0	9			B
TWC/2020/0820	Land opposite 93 & 95 Ash Lea Drive, Donnington, Telford TF2 7QW	3	0	3	0	3			G
TWC/2020/0245	Creative Support Care Home, 83 - 85 Church Parade, Wombridge, Telford, Shropshire TF2 6EY	4	0	4	0	4			B
TWC/2017/0931	Land rear of Mil-May, Lincoln Road, Wrockwardine Wood, Telford Shropshire TF2 6LJ	1	0	1	0	1			B
TWC/2018/0184	Land opposite Usc Con, 15 Rocfield Terrace, Lincoln Road, Wrockwardine Wood, Telford, Shropshire TF2 6LH	1	0	1	0	1			B
TWC/2018/0244	Site of Pleasington Bungalow, Plough Road, Wrockwardine Wood, Telford, Shropshire TF2 7AW	0	0	1	0	1			B
TWC/2020/0168	Land adjacent, 23 Wellington Road, Muxton, Telford, Shropshire	41	0	0	5	5			B
TWC/2018/0029	The Studio, Brickhill Lane, Ketley, Telford, Shropshire TF1 5DT	1	0	1	0	1			B
TWC/2020/0243	63 Broadway, Ketley, Telford, Shropshire, TF1 5AS	-1	0	-1	0	-1			B
TWC/2019/0365	Site of 34 Weavers Rise, Ketley Bank, Telford, TF2 0EX	2	0	2	0	2			B
TWC/2020/0087	Land to the south of the former Rose and Crown PH, Sunnyside Road, Ketley Bank, Telford TF2 0DT	1	0	1	0	1			G
TWC/2020/0759	Land corner of Bank Way/Mossey Green, Ketley Bank, Telford, Shropshire	4	0	4	0	4			G

TWC/2017/0347	Priorslee East, Off Gatcombe Way/York Road/Hereford Drive/Lambeth Drive, Priorslee, Telford, Shropshire	220	109	56	0	56			G
TWC/2017/0941	Land West of, Castle Farm Way, Priorslee, Telford, Shropshire	344	35	80	50	130			B
TWC/2018/0668	Site of Woodruff, Shrubbery Road, Red Lake, Telford, Shropshire TF1 5EQ	1	0	1	0	1			G
TWC/2017/0465	Wesley House, 4 Station Hill, St Georges, Telford, TF2 9AA	12	0	12	0	12			B
TWC/2020/0638	Site of 61 Albion Street, St Georges, Telford, TF2 9AY	2	0	2	0	2			G
TWC/2020/0167	Site of former Rose And Crown PH, Sunnyside Road, Ketley Bank, Telford TF2 0DT	8	0	0	8	8			B
TWC/2018/0780	Land corner of, Holyhead Road/Telford Way, Snedshill, Telford, Shropshire	76	46	0	30	30			G
TWC/2018/0601	Lawley Phases 5 & 9, Lawley, Telford, Shropshire	362	9	214	38	252			B
TWC/2018/0732	Lawley Phase 10, Lawley, Telford, Shropshire	187	0	55	23	78			B
TWC/2019/0980	Site of 8 The Crescent, Lawley, Telford, Shropshire	1	0	1	0	1			B
TWC/2020/0025	Land adjacent Spa House, The Rock, Overdale, Telford, Shropshire	2	0	2	0	2			G
TWC/2020/0518	Land adjacent NFU Mutual, Agriculture House, Southwater Way, Telford Town Centre, Telford, Shropshire	46	0	10	1	11			B
TWC/2015/0233	Lawley Phase 8, Lawley, Telford, Shropshire	561	465	0	10	10			G
TWC/2019/1031	Site of Royston 68, Rosecroft, 9 & 70, Park Road/St Leonards Road, Malinslee, Telford, Shropshire	35	0	0	38	38			B
TWC/2017/0244	St Pauls Church, Aqueduct Road, Aqueduct, Telford TF3 1BY	1	0	1	0	1			B
TWC/2018/0798	Site of 2 Hinkshay Road, Hinkshay, Telford, Shropshire TF4 3PB	1	0	1	0	1			B
TWC/2020/1041	Site of The Firs, New Road, Dawley, Telford, Shropshire	1	0	1	0	1			B
TWC/2021/0667	Site of The Firs, New Road, Dawley, Telford, TF4 3LL	1	0	1	0	1			B
TWC/2014/0237	Land at Doseley Works, Doseley, Telford, Shropshire TF4 3BX	192	182	10	0	10			G
TWC/2019/0441	Former Doseley Works (Phase 3a), Doseley, Telford, Shropshire	93	19	27	35	62			B

Appendix 2 - Residential Sites Under Construction in 2021/22

APP NO	Location	Total Unit Nos	Previous Comps	Private Comps	Affordable Comps	UC	NS	Demos	Telford	Newport	Rural
TWC/2020/0185	Site of Village Farm, 2 Lilleshall, Newport, Shropshire	1	0	0	0	1	0	0			1
TWC/2020/0602	Moor Farm, Kynnersley Drive, Lilleshall, Newport, Shropshire, TF10 9HT	1	0	0	0	1	0	0			1
TWC/2014/0204	Land To The Rear Of, Nix Service Station, Forton Road, Newport, Shropshire TF10 7JR	7	0	0	0	7	0	0		7	
TWC/2016/0816	Royal Victoria Hotel, St Marys Street, 16 & 17 Water Lane, Newport, Shropshire	19	-2	0	0	21	0	0		21	
TWC/2017/0766	Site of 1 The Oaklands, Springfields, Newport, Shropshire TF10 7HA	1	0	0	0	1	0	0		1	
TWC/2018/0138	Land to the North of Audley Avenue, Newport, Shropshire	102	15	22	0	40	25	0		40	
TWC/2018/0949	Land south of 28 Beechfields Way, Newport, Shropshire	19	0	0	0	19	0	0		19	
TWC/2018/0984	Land rear of The Cottage, 2 Cheney Hill, Edgmond Road, Newport, Shropshire TF10 8HA	1	0	0	0	1	0	0		1	
TWC/2019/0070	Site of Parkland House, The Car Auction Ltd & Land north of Audley Avenue Industrial Estate, Audley Avenue, Newport, Shropshire TF10	60	0	0	17	43	0	0		43	
TWC/2019/0569	Land To The North Of, Audley Avenue, Newport, Shropshire	113	0	67	19	27	0	0		27	
TWC/2021/0610	Site of Plough Farm Nursery, Plough Lane, Newport TF10 8BS	9	0	0	0	9	0	0		9	
TWC/2021/0720	Land adjacent Lower Farm, Longford Road, Newport, TF10 8LP	1	0	0	0	1	0	0		1	
TWC/2021/0460	Site of Showell Grange, Sambrook, Newport, Shropshire	1	0	0	0	1	0	0			1
TWC/2020/0346	Cherrington Manor, Cherrington, Newport, Shropshire TF10 8PI	3	0	0	0	3	0	0			3
TWC/2015/0405	Heath House, 17 Middle Lane, Cold Hatton Heath, Telford, Shropshire, TF6 6QA	1	0	0	0	1	0	0			1
TWC/2018/0760	Former Dairy Crest Ltd, Crudgington, Telford, Shropshire TF6 6HY	111	0	38	3	55	15	0			55
TWC/2018/1025	Site of Windy Oak Farm, 66 Ellerdine Heath, Telford, Shropshire TF6 6RN	5	0	2	0	3	0	0			3
TWC/2019/0439	Site of Uppatree, 33 Horton Lane, Horton, Telford, TF6 6DT	1	0	0	0	1	0	0	1		
TWC/2020/0625	Land rear of Haven Cottage/Meadowbrook House/Signal House, Horton Lane, Horton, Telford TF6 6DT	1	0	0	0	1	0	0	1		

TWC/2020/0897	Site 2, Plots 1 & 2, Land between Hayes Meadow and Uppatree, 33 Horton Lane, Horton, Telford, Shropshire	2	0	0	0	2	0	0	2		
TWC/2021/0253	Site of 51 Horton Lane, Horton, Telford TF6 6DT	1	0	0	0	1	0	0	1		
TWC/2021/0629	Land adjacent The Queens Head Car Park, Horton, Telford TF6 6DW	1	0	0	0	1	0	0	1		
TWC/2021/0640	Site of 50 Horton Lane, Horton, Telford, TF6 6DT	1	0	0	0	1	0	0	1		
TWC/2022/0071	Land between Brookfield & 36 Horton Lane, Horton, Telford TF6 6DT	2	0	0	0	2	0	0	2		
TWC/2018/1003	Land adjacent Crown Farm & Swift Barn, Kynnersley, Telford, Shropshire TF6 6DX	1	0	0	0	1	0	0			1
W2008/0059	TERN FARM, LONGDON-ON-TERN TF6 6LN	7	0	0	0	7	0	0			7
TWC/2016/0923	Site of Long Lane Livery, Long Lane, Telford, Shropshire TF6 6HL	2	0	0	0	2	0	0			2
TWC/2016/1171	Site Of Meeson Hall, Meeson, Telford, Shropshire TF6 6PG	6	0	0	0	6	0	0			6
TWC/2020/1037	Former Farmstead, Poynton Manor, Poynton, Telford TF6 6BW	4	0	0	0	4	0	0			4
TWC/2018/0031	Land between Preston Cottage 15 & Village Farm, Preston Upon The Weald Moors, Telford, Shropshire TF6 6DH	1	0	0	0	1	0	0			1
TWC/2018/0578	Land adjacent 1 Humber Lane, The Humbers, Telford, Shropshire TF2 8LN	1	0	0	0	1	0	0			1
TWC/2018/0648	Barn adjacent The Old Rectory, Preston Upon The Weald Moors, Telford, Shropshire TF6 6DH	1	0	0	0	1	0	0			1
TWC/2019/0715	New Farm, Roden Lane, Roden, Telford, Shropshire, TF6 6BS	1	0	0	0	1	0	0			1
W2010/0017 (TWC/2017/0017)	Land at, Isombridge Farm, Isombridge, Shropshire. TF6 6NF	1	0	0	0	1	0	0			1
TWC/2020/0603	Land rear of Field Gate House, 66 Back Lane, Tibberton, Newport, Shropshire	7	0	0	0	7	0	0			7
TWC/2020/1036	Site of Yew Tree Farm, 7 Mill Lane, Tibberton, Newport, Shropshire	1	0	0	0	1	0	0			1
TWC/2021/0569	Land between Tibberton Green & Swn Y Coed, Tibberton, Telford, TF10 8NW	1	0	0	0	1	0	0			1
TWC/2019/0478	Site of The Swan PH, Waters Upton, Telford, Shropshire	5	0	0	0	5	0	0			5
TWC/2019/0503	Land south/west of Donnerville Drive, Admaston, Telford TF5 0DF	5	0	0	0	5	0	0	5		
TWC/2021/0641	Site of 8 & 10 Shawbirch Road, Admaston, Telford, TF5 0AD	1	0	1	0	1	0	-1	0		
TWC/2021/1103	Site of 24 Station Road, Admaston, Telford TF5 0AL	1	0	0	0	1	0	0	1		
TWC/2021/1213	Site of The Acorns, Donnerville Gardens, Admaston, Telford TF5 0DE	6	0	0	0	7	0	-1	6		

TWC/2019/0753	Land between Arleston Lane & Dawley Road, Arleston, Telford, Shropshire	142	0	74	0	68	0	0	68		
TWC/2020/1021	Site of The Bungalow, Arleston Village, Arleston, Telford TF1 2LU	3	0	2	0	1	0	0	1		
TWC/2021/0906	Land adjacent to Brook Lodge, Arleston Lane, Arleston, Telford TF1 2LA	1	0	0	0	1	0	0	1		
TWC/2016/0594	Land adjacent & South of Breezes 8 & 11, Allscott, Telford, Shropshire TF6 5ER	2	0	0	0	2	0	0			2
TWC/2019/0827	Former British Sugar site (Phase 1), Allscott, Telford, Shropshire	200	0	79	9	90	22				90
TWC/2017/0643	Land to the North of Haygate Road, Wellington, Telford, Shropshire	289	219	0	40	30	0	0	30		
TWC/2018/1006	Site of 21 Whitchurch Road, Wellington, Telford, Shropshire TF1 3DX	1	0	0	0	1	0	0	1		
TWC/2019/1043	Site of Wellington and District Cottage Care, 79 Haygate Road, Wellington, Telford, Shropshire	15	0	0	0	15	0	0	15		
TWC/2020/0053	Rear of 19 Church Street, Wellington, Telford TF1 1SN	3	0	0	0	3	0	0	3		
TWC/2020/0446	Site of Haughmond Court & Apley Court, Dothill, Telford, Shropshire	30	0	0	0	45	15		45		
TWC/2021/0593	Land to the rear of 13 Crescent Road, Wellington, Telford, TF1 1SE	3	0	0	0	3	0	0	3		
W2009/0546	5, Castle Street, Hadley, Telford, Shropshire.	2	0	0	0	2	0	0	2		
TWC/2018/0357	Land rear of 54 - 60 (evens), Castle Street, Hadley, Telford, Shropshire TF1 5RA	1	0	0	0	1	0	0	1		
TWC/2020/0658	Fairview, Haybridge Road, Hadley, Telford, Shropshire TF1 6JE	1	0	0	0	1	0	0	1		
TWC/2021/0300	Site of 47A Hadley Park Road, Hadley, Telford, TF1 6PW	1	0	0	0	1	0	0	1		
TWC/2021/0585	Site of 22 Hadley Park Road, Hadley, Telford, TF1 6PW	4	0	0	0	4	0	0	4		
TWC/2017/0572	Former Old Shawbirch Inn, Trench Road, Trench, Telford, Shropshire, TF2 7DX	4	0	0	0	4	0	0	4		
TWC/2018/0865	Site of Former Sutherland Co Operative Academy, Gibbons Road, Trench, Telford, Shropshire	123	25	21	0	77	0	0	77		
TWC/2020/0832	Site of Furnace House Guest House, 64 Furnace Lane, Trench, Telford, TF2 7JE	1	0	0	0	1	0	0	1		
TWC/2021/0003	Four Ways, Queens Road, Donnington, Telford, Shropshire, TF2 8BZ	1	0	0	0	1	0	0	1		
TWC/2019/0957	Site of 23 Wellington Road, Muxton, Telford, Shropshire	3	-1	0	0	4	0	0	4		

TWC/2016/0125	Land at junction of, Moss Road/Rookery Road, Wrockwardine Wood, Telford, Shropshire	24	0	0	0	24	0	0	24		
TWC/2019/1034	53 & 55 Ketley Park Road, Ketley, Telford, Shropshire, TF1 5BF	2	0	0	0	2	0	0	2		
TWC/2020/0674	Land Adjacent, 11 Withington Close, Oakengates, Telford TF2 6JP	1	0	0	0	1	0	0	1		
TWC/2017/0347	Priorslee East, Off Gatcombe Way/York Road/Hereford Drive/Lambeth Drive, Priorslee, Telford, Shropshire	220	109	56	0	55	0	0	55		
TWC/2017/0941	Land West of, Castle Farm Way, Priorslee, Telford, Shropshire	344	35	80	50	80	99	0	80		
TWC/2019/0228	Land adjacent The Shires, Shifnal Road, Priorslee, Telford, Shropshire	39	0	0	0	39	0	0	39		
TWC/2020/0310	Land West of, Castle Farm Way, Priorslee, Telford, Shropshire	42	0	0	0	42	0	0	42		
TWC/2021/1056	Land adjacent Fleur, 1 The Hollies, Priorslee Village, Priorslee, Telford TF2 9NW	1	0	0	0	1	0	0	1		
TWC/2018/0268	Land between Woodruff & Westaways, Shrubbery Road, Red Lake, Telford, Shropshire TF1 5EQ	2	0	0	0	2	0	0	2		
TWC/2013/0053	Land adjacent, 14 The Nabb, St Georges, Telford, Shropshire, TF2 9BY	3	0	0	0	3	0	0	3		
TWC/2018/0908	Site of 30 Albion Street, St Georges, Telford, Shropshire TF2 9AU	1	0	0	0	1	0	0	1		
TWC/2019/0820	Site to rear of 32 Stafford Street, St Georges, Telford TF2 9JQ	2	0	0	0	2	0	0	2		
TWC/2020/0750	Land adjacent 19 The Nabb, St Georges, Telford, TF2 9BY	1	0	0	0	1	0	0	1		
TWC/2020/0824	Land adjacent The Trees Bungalow, The Nabb, St Georges, Telford TF2 9BU	1	0	0	0	1	0	0	1		
TWC/2021/0601	Site of 30 The Nabb, St Georges, Telford TF2 9BY	3	0	0	0	3	0	0	3		
TWC/2020/0845	Site of Ferrroyd, Old Office Road, Dawley, Telford, TF4 2LF	1	0	0	0	1	0	0	1		
TWC/2015/0233	Lawley Phase 8, Lawley, Telford, Shropshire	561	465	0	10	86	0	0	86		
TWC/2016/0660	Lawley Phase 7, Lawley, Telford, Shropshire	267	264	0	0	3	0	0	3		
TWC/2018/0601	Lawley Phases 5 & 9, Lawley, Telford, Shropshire	362	9	214	38	101	0	0	101		
TWC/2018/0732	Lawley Phase 10, Lawley, Telford, Shropshire	187	0	55	23	109	0	0	109		
TWC/2018/0928	Land adjacent Ashfield, Station Road, Lawley Bank, Telford, Shropshire TF4 2LP	1	0	0	0	1	0	0	1		
TWC/2019/0902	Land North of Grove Road, Overdale, Telford, Shropshire	81	0	0	0	40	41	0	40		
TWC/2016/1079	Site of, 45 Clares Lane Close, The Rock, Telford, Shropshire TF3 5DA	1	0	0	0	1	0	0	1		

TWC/2021/1035	Site of 42 The Rock, Telford, TF3 5BH	1	0	0	0	1	0	0	1		
TWC/2021/0778	Dawley Bargain Centre, 36 High Street, Dawley, Telford, Shropshire, TF4 2FY	1	0	0	0	1	0	0	1		
TWC/2021/1223	Site of former Queens Arms, Southall Road, Dawley, Telford TF4 3LY	5	0	0	0	5	0	0	5		
TWC/2018/0297	Land adjacent Cheshire Cheese PH, Doseley Road, Doseley, Telford, Shropshire	13	0	0	0	13	0	0	13		
TWC/2019/0441	Former Doseley Works (Phase 3a), Doseley, Telford, Shropshire	93	19	27	35	12	0	0	12		
TWC/2021/0053	Former Doseley Works (Phase 3D), Doseley, Telford, Shropshire	35	0	0	0	17	18	0	17		
TWC/2021/0530	Former Doseley Works (Phase 3C1), Doseley, Telford, TF4 3BX	24	0	0	0	24	0	0	24		
TWC/2020/0340	The Croppings, Phase 2, Lightmoor Village, Telford, Shropshire	96	0	0	0	96	0	0	96		
TWC/2020/0342	The Woodlands, Phase 3, Lightmoor Village, Telford, Shropshire	202	0	0	0	22	180	0	22		
TWC/2020/0146	New Works Farm, New Works, Telford, Shropshire, TF6 5BP	1	0	0	0	1	0	0			1
TWC/2016/0838	Land adjacent Old School House, School Road, Coalbrookdale, Telford TF8 7DZ	1	0	0	0	1	0	0	1		
TWC/2020/1076	Land opposite, 15-22 Woodside, Coalbrookdale, Telford TF8 7ED	1	0	0	0	1	0	0	1		
TWC/2018/1013	Land adjacent Humay, Hodge Bower, Ironbridge, Telford, Shropshire, TF8 7QQ	1	0	0	0	1	0	0	1		
TWC/2016/0407	Former Severn Valley Motorsport Ltd/Madeley Testing Station, Ironbridge Road, Madeley, Telford, Shropshire TF7 5JU	8	0	0	0	8	0	0	8		
TWC/2019/0960	Site of 21 Bridle Road, Madeley, Telford TF7 5LD	6	-1	0	0	7	0	0	7		
TWC/2021/0517	Site of 14 The Rookery, Madeley, Telford TF7 5AW	2	0	0	0	2	0	0	2		
TWC/2022/0126	Site of The Hollies, 2 Mill Lane, Madeley, Telford TF7 5DY	1	0	0	0	1	0	0	1		
TWC/2018/0065	Land adjacent Police Houses, 2 Park Lane, Woodside, Telford, Shropshire TF7 5HN	1	0	0	0	1	0	0	1		
TWC/2020/0526	Land south of, Newcomen Way, Woodside, Telford, Shropshire	55	0	0	20	35	0	0	35		

Totals 1499 -2 1131 169 197
Totals (- Demos) 1497 1497

Appendix 3 - Residential Sites Not Started in 2021/22

APP NO	Location	Total Unit Nos	Previous Comps	Private Comps	Affordable Comps	UC	NS	Demos	Telford	Newport	Rural
TWC/2021/0979	Fielden House, 30 Chetwynd Aston, Newport, Shropshire, TF10 9LF	-1	0	0	0	0	-1	0			-1
TWC/2021/1057	Land at The Mount, Chetwynd Aston, Newport, Shropshire TF10 9LD	1	0	0	0	0	1	0			1
TWC/2019/0985	The Workshop, High Street, Edgmond, Newport, Shropshire, TF10 8JW	1	0	0	0	0	1	0			1
TWC/2020/0814	Site of Edgmond Primitive Methodist Church and Sunday School, Shrewsbury Road, Edgmond, Shropshire TF10 8HT	3	0	0	0	0	3	0			3
TWC/2021/0403	Site of 1 - 2 The Cottages, Shrewsbury Road, Newtown, Edgmond, Shropshire TF10 8HX	1	0	0	0	0	1	0			1
TWC/2020/0358	Land opposite Woodside Farm, Kynnersley Drive, Lilleshall, Newport, Shropshire	1	0	0	0	0	1	0			1
TWC/2020/1107	Jardwood Farm, The Hinks, Lilleshall, Newport, Shropshire TF10 9HT	4	0	0	0	0	4	0			4
TWC/2021/0637	Former Builders Yard, Barrack Lane, Lilleshall, Shropshire TF10 9ET	3	0	0	0	0	3	0			3
TWC/2021/0715	Land adjacent 82A Limekiln Lane, Lilleshall, Newport, Shropshire TF10 9EX	2	0	0	0	0	2	0			2
TWC/2021/1217	Site of 9 Hillside, Lilleshall, Shropshire TF109HG	1	0	0	0	0	1	0			1
TWC/2016/0589	Land to the rear of 40-42 St Marys Street, Newport, Shropshire TF10 7AB	9	0	0	0	0	9	0		9	
TWC/2018/0138	Land to the North of Audley Avenue, Newport, Shropshire	102	15	22	0	40	25	0		25	
TWC/2018/0770	1 Lower Bar, Newport, Shropshire, TF10 7BE	2	1	0	0	0	1	0		1	
TWC/2020/0631	Site of, 60 Forton Road, Newport, TF10 8BT	1	0	0	0	0	1	0		1	
TWC/2020/1015	Site of Ingleside, 1 Edgmond Road, Newport, Shropshire	1	0	0	0	0	1	0		1	
TWC/2021/0401	Former Royal Victoria Hotel, St Marys Street, Newport, Shropshire TF10 7AB	17	0	0	0	0	17	0		17	
TWC/2021/0170	Site of 2 Sambrook, Newport, Shropshire TF10 8AX	1	0	0	0	0	1	0			1
TWC/2021/0385	Site of Sambrook Hall Farm, Sambrook, Newport, Shropshire TF10 8AL	2	0	0	0	0	2	0			2
TWC/2018/0850	Site of Rodway Manor Farm, Cherrington, Newport, Shropshire TF6 6EF	4	0	0	0	0	4	0			4
TWC/2018/0760	Former Dairy Crest Ltd, Crudgington, Telford, Shropshire TF6 6HY	111	0	38	3	55	15	0			15
TWC/2020/0218	Former Dairy Crest Ltd, Crudgington, Telford TF6 6HY	7	0	0	0	0	7	0			7

TWC/2021/0531	Land East & South of Angel Centre, Osbaston, Telford, Shropshire TF6 6QZ	1	0	0	0	0	1	0			1
TWC/2019/0012	30 Horton Lane, Horton, Telford, Shropshire, TF6 6DT	0	0	0	0	0	1	0	1		
TWC/2020/0950	Site 1, Plots 1,2 & 3, Land between Hayes Meadow & Uppatree, 33, Horton Lane, Horton, Telford, Shropshire	3	0	0	0	0	3	0	3		
TWC/2021/1014	Land adjacent Wayside, Horton Lane, Horton, Telford, TF6 6DT	1	0	0	0	0	1	0	1		
TWC/2020/0604	17-18 Donnington Drive, The Humbers, Telford, Shropshire, TF2 8LR	-2	0	0	0	0	-2	0			-2
TWC/2020/0361	Land rear of The Old Post Office, Roden Lane, Roden, Telford, Shropshire	1	0	0	0	0	1	0			1
TWC/2020/0582	Water Tower (adjacent Lindum House), Roden, Telford, Shropshire	1	0	0	0	0	1	0			1
TWC/2018/0891	Site of Marsh Farm, Marsh Green, Telford, Shropshire TF6 6NF	2	0	0	0	0	2	0			2
TWC/2021/0459	Site of Barnes Farm, Rowton Road, Rowton, Telford, TF6 6QX	1	0	0	0	0	1	0			1
TWC/2019/0177	Land south and west of Tibberton Motor Repairs, Mill Lane, Tibberton, Newport, Shropshire	21	0	0	0	0	21	0			21
TWC/2021/0515	Land adjacent Arleston House, Cluddley Lane, Cluddley, Telford TF6 5DR	2	0	0	0	0	2	0			2
TWC/2019/0370	Site of 8 Greenfinch Close, Apley, Telford TF1 6FY	1	0	0	0	0	1	0	1		
TWC/2019/0560	Site of The Mill House, Walcot, Telford TF6 5ER	1	0	0	0	0	1	0			1
TWC/2019/0827	Former British Sugar site (Phase 1), Allscott, Telford, Shropshire	200	0	79	9	90	22				22
TWC/2019/0628	Site of former 31 Wrockwardine, Telford, Shropshire	1	0	0	0	0	1	0			1
TWC/2018/0788	33 New Street, Wellington, Telford, Shropshire, TF1 1LU	1	0	0	0	0	1	0	1		
TWC/2019/0631	Vine House, 2 Vineyard Road, Wellington, Telford, Shropshire, TF1 1HA	4	0	0	0	0	4	0	4		
TWC/2019/0782	Turner House, 45 Market Street, Wellington, Telford, Shropshire, TF1 1DT	1	0	0	0	0	1	0	1		
TWC/2020/0108	Lord Nelson Hotel, 11-13 Park Street, Wellington, Telford, Shropshire, TF1 3AE	10	0	0	0	0	10	0	10		
TWC/2020/0446	Site of Haughmond Court & Apley Court, Dothill, Telford, Shropshire	30	0	0	0	45	15		15		
TWC/2020/0979	1 Cart Gate, Wellington, Telford, Shropshire, TF1 1RB	-1	0	0	0	0	-1	0	-1		
TWC/2021/0006	Site of Peter Morris Cars, Wrekin Road, Wellington, Telford, TF1 1OZ	14	0	0	0	0	14	0	14		
TWC/2021/0453	17 Market Square, Wellington, Telford, Shropshire, TF1 1BU	1	0	0	0	0	1	0	1		
TWC/2021/0609	Site of 193 and 195 Holyhead Road, Wellington, Telford, TF1 2DP	6	0	0	0	0	6	0	6		

TWC/2021/0777	The Glebe Centre, Glebe Street, Wellington, Telford, Shropshire, TF1 1JP	27	0	0	0	0	27	0	27		
TWC/2021/0800	Pandel Bathrooms, 19 Bridge Road, Wellington, Telford, Shropshire, TF1 1EA	2	0	0	0	0	2	0	2		
TWC/2021/0815	1-10 Glebe Flats, Glebe Street/1-32 Nelson Court/1-55 (odds) St John Street/1-18 York Flats, 2-28 (evens) & 34-88 (evens) High Street, Wellington, Telford, TF1 1LH	-120	0	0	0	0	-120	0	-120		
TWC/2021/0874	17 Market Square, Wellington, Telford, Shropshire, TF1 1BU	1	0	0	0	0	1	0	1		
TWC/2018/0061	Land rear of 40 Castle Street, Hadley, Telford, Shropshire TF1 5RA	10	0	0	0	0	10	0	10		
TWC/2020/0180	Site of Montford, Castle Street, Hadley, Telford, Shropshire	9	0	0	0	0	9		9		
TWC/2021/1144	Site of Block B The Haybridge, Haybridge Road, Hadley, Telford TF1 6LX	9	0	0	0	0	9	0	9		
TWC/2018/0360	Site of Former Maxell Europe Ltd, Hortonwood, Telford, Shropshire TF1 6DA	90	0	0	0	0	90	0	90		
TWC/2021/0885	Site of Former Maxell Europe Ltd, Hortonwood, Telford, Shropshire TF1 6DA	375	0	0	0	0	375	0	375		
TWC/2021/0046	Land North/East of Lodge Road Caravan Site, Donnington Wood Way, Donnington Wood, Telford TF2 7QD	233	0	0	0	0	233	0	233		
TWC/2021/1145	Land Adjacent, 12 The Fields, Donnington Wood, Telford TF2 7PW	9	0	0	0	0	9	0	9		
TWC/2019/1033	Site of 11 - 82 Leonard Close, Donnington, Telford TF2 8BQ	43	0	0	0	0	43	0	43		
TWC/2020/0133	Site of 11 - 82 Leonard Close, Donnington, Telford TF2 8BQ	-73	0	0	0	0	-73	0	-73		
TWC/2020/0168	Land adjacent, 23 Wellington Road, Muxton, Telford, Shropshire	41	0	0	5	0	36	0	36		
TWC/2020/0879	Land corner of Redhill Way/A5, Redhill, Telford, Shropshire	450	0	0	0	0	450	0	450		
TWC/2020/0480	Land rear of 86-88 Church Parade, Wombridge, Telford, Shropshire	4	0	0	0	0	4	0	4		
TWC/2020/0670	Land adjacent, 44 Wombridge Road, Wombridge, Telford, TF2 6JB	1	0	0	0	0	1	0	1		
TWC/2021/0071	Site of 5A Church Parade, Wombridge, Telford, TF2 6FX	1	0	0	0	0	1	0	1		
TWC/2016/0886	Site of Wrockwardine Wood House, New Road, Wrockwardine Wood, Telford, Shropshire	12	0	0	0	0	12	0	12		
TWC/2018/0814	Site of PEZ Ltd, Woodlands Workshop/Land rear of 11 Wrens Nest Lane, Ketley, Telford, Shropshire TF1 5HL	3	0	0	0	0	3	0	3		
TWC/2019/0386	The Wrens Nest, Wrens Nest Lane, Ketley, Telford, Shropshire, TF1 5HJ	4	0	0	0	0	4	0	4		

TWC/2021/0877	Land adjacent/rear of, 51 Holyhead Road, Ketley, Telford TF1 5AN	9	0	0	0	0	9	0	9		
TWC/2019/0717	25 Weavers Rise, Ketley Bank, Telford, Shropshire, TF2 0FX	1	0	0	0	0	1	0	1		
TWC/2019/0862	The Willow Tree House, 2 Main Road, Ketley Bank, Telford, Shropshire, TF2 0DD	-1	0	0	0	0	-1	0	-1		
TWC/2021/0608	Site of The Croft Barn, Main Road, Ketley Bank, Telford TF2 0DD	1	0	0	0	0	1	0	1		
TWC/2019/0806	Site of former Eden Complex, Telford Snooker Centre, Canongate, Oakengates, Telford, TF2 0RF	70	0	0	0	0	70	0	70		
TWC/2019/0891	30 Market Street, Oakengates, Telford, Shropshire TF2 6FD	2	0	0	0	0	2	0	2		
TWC/2020/0635	Land adjacent, 34 New Street, Oakengates, Telford TF2 6FR	9	0	0	0	0	9	0	9		
TWC/2020/0830	Site of Rose Cottage, Hadley Road, Oakengates, Telford, TF6 6HL	3	0	0	0	0	3	0	3		
TWC/2021/0491	Land adjacent Greenfields, Holyhead Road, Oakengates, Telford, TF2 6BF	6	0	0	0	0	6	0	6		
TWC/2021/0532	25, 27 & Site of Morningside Cottage, 27A Holyhead Road, Oakengates, Telford TF2 6BE	1	0	0	0	0	1	0	1		
TWC/2017/0941	Land West of, Castle Farm Way, Priorslee, Telford, Shropshire	344	35	80	50	80	99	0	99		
TWC/2019/0724	Site J (East & South of Westminster Way), Gatcombe Way, Priorslee, Telford, Shropshire	94	0	0	0	0	94	0	94		
TWC/2019/0864	Land between, Castle Farm Way and A5 (Phase 1), Priorslee, Telford, Shropshire	455	0	0	0	0	455	0	455		
TWC/2021/0557	Site of Woodhouse Farm, Woodhouse Lane, Priorslee, Telford TF2 9TT	21	0	0	0	0	21	0	21		
TWC/2021/0722	Former Youth Centre, Gower Street, St Georges, Telford, TF2 9BF	13	0	0	0	0	13	0	13		
TWC/2021/0415	Land adjacent 34 Milners Lane, Dawley Bank, Telford TF4 2JJ	5	0	0	0	0	5	0	5		
TWC/2020/0047	Lawley Phase 11, Lawley Common, Lawley, Telford, Shropshire	600	0	0	0	0	600	0	600		
TWC/2021/1029	Site of Oakleigh, Lawley Village, Telford TF4 2PH	3	0	0	0	0	3	0	3		
TWC/2017/0062	Land adjacent Buena Vista, 6 The Crest, Old Park, Telford, TF3 4TJ	5	0	0	0	0	5	0	5		
TWC/2018/0277	Site of 2 Old Coppice Grange, Old Park, Telford, Shropshire TF3 4TL	1	0	0	0	0	1	0	1		
TWC/2020/0987	Land between, Colliers Way & Park Lane, Old Park, Telford, Shropshire	88	0	0	0	0	88	0	88		
TWC/2019/0902	Land North of Grove Road, Overdale, Telford, Shropshire	81	0	0	0	40	41	0	41		
TWC/2020/0463	Site of Upway Cottage, 51 The Rock, Telford, Shropshire	1	0	0	0	0	1	0	1		
TWC/2020/0842	Site of Dianas Dog Grooming, The Rock, Telford, Shropshire	1	0	0	0	0	1	0	1		

TWC/2020/0518	Land adjacent NFU Mutual, Agriculture House, Southwater Way, Telford Town Centre, Telford, Shropshire	46	0	10	1	0	35	0	35		
TWC/2020/0466	Land west of Lawford Close, Off Majestic Way, Aqueduct, Telford TF4 3RT	39	0	0	35	0	4	0	4		
TWC/2019/0987	Site of Former Grange Park Primary School, Calcott, Stirchley, Telford TF3 1YQ	48	0	0	0	0	48	0	48		
TWC/2020/0114	Site of The Former Swan Centre, Grange Avenue, Stirchley, Telford TF3 1FL	20	0	0	0	0	20	0	20		
TWC/2021/0191	Land adjacent 4 Tunnel Cottages, Aqueduct Lane, Stirchley, Telford TF3 1BW	2	0	0	0	0	2	0	2		
TWC/2017/0781	Land adjacent Little Paddocks, Hinkshay Road, Dawley, Telford, Shropshire TF4 3PF	12	0	0	0	0	12	0	12		
TWC/2020/0347	Former Dun Cow Public House, New Street, Dawley, Telford TF4 3JR	43	0	0	0	0	43	0	43		
TWC/2020/0380	4 High Street, Dawley, Telford, Shropshire, TF4 2ET	3	0	0	0	0	3	0	3		
TWC/2020/0696	Site of former Cheshire Cheese, Doseley Road, Dawley, Telford TF4 3BB	10	0	0	0	0	10	0	10		
TWC/2020/0882	Site of, 50 - 72 and 81 - 123 Portley Road, Dawley, Telford, Shropshire	-66	0	0	0	0	-66	0	-66		
TWC/2020/0886	Site of 26, 28, 30, 32 Webb Crescent/2, 4, 6, 8 Windsor Road, Dawley, Telford TF4 3DJ	10	0	0	0	0	10	0	10		
TWC/2021/0688	Site of 50-72 and 81-123 Portley Road, Dawley, Telford TF4 3JJ	13	0	0	0	0	13	0	13		
TWC/2021/0852	Site of Castle Lodge, Attwood Terrace, Dawley, Telford, TF4 2HQ	14	0	0	0	0	14	0	14		
TWC/2021/1051	41 & 42 Attwood Terrace, Dawley, Telford, Shropshire, TF4 2HH	-2	0	0	0	0	-2	0	-2		
TWC/2020/0142	Former Doseley Works (Phase 3B), Doseley, Telford, Shropshire	115	0	0	0	0	115	0	115		
TWC/2020/0410	Site of Doseley Industrial Estate, Frame Lane, Doseley, Telford TF4 3BZ	48	0	0	0	0	48	0	48		
TWC/2021/0053	Former Doseley Works (Phase 3D), Doseley, Telford, Shropshire	35	0	0	0	17	18	0	18		
TWC/2018/0033	Barns adjacent Woodlands Farm, Woodlands Lane, Horsehay, Telford, Shropshire TF4 3QF	8	0	0	0	0	8	0	8		
TWC/2019/1042	Former Concrete Works, Lightmoor Road, Lightmoor, Telford, Shropshire	52	0	0	0	0	52	0	52		
TWC/2020/0342	The Woodlands, Phase 3, Lightmoor Village, Telford, Shropshire	202	0	0	0	22	180	0	180		
TWC/2021/0301	Site of Cherry Tree Hill Car Park, Cherry Tree Hill, Coalbrookdale, Telford TF8 7EF	4	0	0	0	0	4	0	4		
TWC/2021/0437	Site of 11 Wynns Coppice, Crackshall Lane, Coalbrookdale, Telford TF4 3OF	1	0	0	0	0	1	0	1		
TWC/2016/0553	Land East of Loadcroft, Lincoln Hill, Ironbridge, Telford, Shropshire TF8 7NL	1	0	0	0	0	1	0	1		

TWC/2019/1032	Wesley Rooms Annexe, Jockey Bank, Ironbridge, Telford, Shropshire, TF8 7PD	1	0	0	0	0	1	0	1		
TWC/2020/0441	Site of Stone Wharf, Dale Road, Ironbridge, Telford, Shropshire	1	0	0	0	0	1	0	1		
TWC/2017/0716	Land rear of 19 Park Street & High View, Park Street, Madeley, Telford, Shropshire TF7 5LR	3	0	0	0	0	3	0	3		
TWC/2018/0376	Land East of 21A St Michaels Close, Madeley, Telford, Shropshire TF7 5SD	1	0	0	0	0	1	0	1		
TWC/2018/0663	Villa Court, Maddocks, Madeley, Telford, Shropshire TF7 5AF	1	0	0	0	0	1	0	1		
TWC/2019/0524	Site of Lee Dingle, 48 Lees Farm Drive, Madeley, Telford TF7 5SU	1	0	0	0	0	1	0	1		
TWC/2020/0196	Land off, Beech Road, Madeley, Telford, TF7 5LE	80	0	0	0	0	80	0	80		
TWC/2020/0329	Upper House, 16 Church Street, Madeley, Telford, Shropshire, TF7 5BW	8	0	0	0	0	8	0	8		
TWC/2021/0781	Former Madeley Library, 1st & 2nd floor, 20-21 Russell Square, Madeley, Telford, TF7 5BR	6	0	0	0	0	6	0	6		
TWC/2021/1064	10 Park Street, Madeley, Telford, Shropshire, TF7 5LA	2	0	0	0	0	2	0	2		
TWC/2020/0052	65 Park Lane, Woodside, Telford, Shropshire, TF7 5GG	1	0	0	0	0	1	0	1		
TWC/2021/0229	Land adjacent 2 Barn Cottages, Park Lane, Woodside, Telford TF7 5HW	1	0	0	0	0	1	0	1		
TWC/2021/0364	Land south of Newcomen Way, Woodside, Telford TF7 5UB	21	0	0	0	0	21	0	21		
Total (FFP)									3411	54	96
									3561		

Outline Applications

APP NO	Location	Total Unit Nos	Previous Comps	Private Comps	Affordable Comps	UC	NS	Demos	Telford	Newport	Rural
TWC/2011/0871	Land to the East and West of Station Road, Newport, Shropshire	350	0	0	0	0	350	0		350	
TWC/2015/0057	Land South of Springfield Industrial Estate, Station Road, Newport, Shropshire	120	0	0	0	0	120	0		120	
TWC/2020/0543	Land adjacent Lower Farm, Longford Road, Newport, Shropshire TF10 8lp	1	0	0	0	0	1	0		1	
TWC/2020/0010	Site of 64 Plantation Road, Tibberton, Newport, Shropshire	1	0	0	0	0	1	0			1
TWC/2021/0045	Plot 2, Plantation Road, Tibberton, Newport, Shropshire, TF10 8PD	1	0	0	0	0	1	0			1
TWC/2020/0875	Site of Richmond House, Donnerville Gardens, Admaston, Telford, TF5 0DE	4	0	0	0	0	4	0	4		
TWC/2015/0920	Site of Apley Home Farm, Apley Castle, Apley, Telford, Shropshire TF1 6DD	10	0	0	0	0	10	0	10		
TWC/2014/0113	Former British Sugar site, Allscott, Telford, Shropshire	270	0	0	0	0	270	0			270

TWC/2018/0701	Site of former Charlton School, Severn Drive, Dothill, Telford, Shropshire TF1	200	0	0	0	0	200	0	200		
TWC/2018/0904	Site of 134 Haygate Road, Wellington, Telford, Shropshire	4	0	0	0	0	4	0	4		
TWC/2019/0239	Site of 80 Regent Street, Wellington, Telford, Shropshire TF1 1PF	1	0	0	0	0	1	0	1		
TWC/2019/0360	Site of 1 Regent Street, Wellington, Telford, Shropshire	1	0	0	0	0	1	0	1		
TWC/2019/0143	Land adjacent The Bridge Inn, Wombridge Road, Trench, Telford, TF2 6BJ	2	0	0	0	0	2	0	2		
TWC/2019/0101	Site of Holly Cottage and The Banks, 204A & 204B St Georges Road, Donnington, Telford TF2 7NE	4	0	0	0	0	6	-2	6		
TWC/2020/0769	Site of 25 Copperfield Drive, Muxton, Telford, TF2 8JG	1	0	0	0	0	1	0	1		
TWC/2018/0802	Site of Hillside Farm, Woodside Road, Ketley, Telford TF1 5HD	4	0	0	0	0	4	0	4		
TWC/2020/0681	Land adjacent 1 Ketley Dingle, Holyhead Road, Ketley, Telford, TF1 5HS	1	0	0	0	0	1	0	1		
TWC/2017/1021	Builders Yard adjacent and land rear of, 5 Main Road, Ketley Bank, Telford, Shropshire	3	0	0	0	0	3	0	3		
TWC/2020/1068	Site of 26 Hillside Road, Ketley Bank, Telford TF2 0BY	1	0	0	0	0	1	0	1		
TWC/2019/0351	Site of 10 Beveley Road, Oakengates, Telford, TF2 6AT	3	0	0	0	0	4	-1	4		
TWC/2021/0763	Garages adjacent 8 Maurice Lee Avenue, Oakengates, Telford TF2 6HF	2	0	0	0	0	2	0	2		
TWC/2014/0980	Land between, Castle Farm Way and A5, Priorslee, Telford, Shropshire	645	0	0	0	0	645	0	645		
TWC/2019/0752	Land junction of, Church Road/Furnace Road/Holyhead Road, Snedshill, Telford TF2 9HQ	6	0	0	0	0	6	0	6		
TWC/2018/0436	Site of Greenacres & The Bungalow, Church Street, St Georges, Telford	2	0	0	0	0	4	-2	4		
TWC/2021/0105	Former Site of The Queens Arms, Bank Road, Dawley Bank, Telford, TF4 2bb	10	0	0	0	0	10	0	10		
TWC/2019/0677	Land adjacent 1 & 2, Minchers Rise, The Rock, Telford, Shropshire	2	0	0	0	0	2	0	2		
TWC/2018/0410	Land adjacent 11 Southall, Dawley, Telford, Shropshire	2	0	0	0	0	2	0	2		
TWC/2018/0411	Site of 8 & 9 Southall, Dawley, Telford, Shropshire	4	0	0	0	0	5	-1	5		
TWC/2018/1007	Site of 11 - 12 Langley Fields, Hinkshay Road, Dawley, Telford, Shropshire TF4 3BG	0	0	0	0	0	1	-1	1		
TWC/2019/0104	Land between Hartfield House/41, Pool Hill Road, Horsehay, Telford TF4 3AS	36	0	0	0	0	36	0	36		
TWC/2017/0330	Site of T A Jervis & Co. Ltd & land adjacent, Holywell Lane, Lightmoor, Telford TF4 3QJ	17	0	0	0	0	17	0	17		

Appendix 4a - Completed Employment Floorspace 2021/22

Application No	Address	Description	Hierarchy	Use Class	Previous Use	Change	Gain Or Loss	Sq M	Hectares
TWC/2018/0560	5 Chetwynd End, Newport, Shropshire, TF10 7JJ	Change of use of 5 Chetwynd End from dwelling (Use Class C3) to offices (Use Class B1(a)) ***Amended location plan red line***	Newport	B1(a)	B	Change of Use	Gain	90	0.047
TWC/2020/0026	Westmount, Bridge Road, Wellington, Telford, Shropshire TF1 1DZ	Conversion from commercial offices (use class B1) to 8no. self-contained apartment/bed-sits (use class C3)***AMENDED SITE ADDRESS AND AMENDED FLOOR PLANS SUBMITTED***	Telford	B1(a)	B	Change of Use	Loss	-680	0.034
TWC/2018/0029	The Studio, Brickhill Lane, Ketley, Telford, Shropshire (Rear of 106 Holyhead Road TF1 5DJ)	Conversion of former photographic studio to single residential dwelling with additional dormer windows	Telford	B1(a)	B	Change of Use	Loss	-92	0.04
TWC/2019/0849	Plot 1, Land East of Queensway HLC, Queensway, Hortonwood, Telford, Shropshire	Erection of 2no. Industrial units comprising of use classes B1, B2 and B8 with ancillary offices, car parking, service yards and landscaping ***AMENDED PLANS RECEIVED AND RED BOUNDARY LINE CHANGES***	Telford	B1(a)	G	New Building	Gain	54	1.03
TWC/2019/0320	Timber Yard, Duke Street, St Georges, Telford, Shropshire, TF2 9BA	Change of use to storage yard with associated office (use class Sui-Generis), including the regularisation of site boundary (Retrospective)	Telford	B1(a)	B	Change of Use	Change	118	0.5
TWC/2019/0840	Land North East of Halesfield Roundabout, Halesfield 18, Halesfield, Telford, Shropshire	Erection of 3no. units with ancillary offices, associated parking, service yards and landscaping	Telford	B1(a)	G	New Building	Gain	770	2.049
Use Class Net								260	3.7
Use Class Gross								1032	
TWC/2019/0849	Plot 1, Land East of Queensway HLC, Queensway, Hortonwood, Telford, Shropshire	Erection of 2no. Industrial units comprising of use classes B1, B2 and B8 with ancillary offices, car parking, service yards and landscaping ***AMENDED PLANS RECEIVED AND RED BOUNDARY LINE CHANGES***	Telford	B1(c)	G	New Building	Gain	3358	1.03
Use Class Net								3358	1.03
Use Class Gross								3358	
TWC/2019/0849	Plot 1, Land East of Queensway HLC, Queensway, Hortonwood, Telford, Shropshire	Erection of 2no. Industrial units comprising of use classes B1, B2 and B8 with ancillary offices, car parking, service yards and landscaping ***AMENDED PLANS RECEIVED AND RED BOUNDARY LINE CHANGES***	Telford	B2	G	New Building	Gain	54	1.03
TWC/2020/0045	Unit 4B, Kendall Estate, Stafford Park 6, Stafford Park, Telford, Shropshire, TF3 3AT	Change of use from general industrial (use class B2) to health and fitness centre (use class D2) ***Amended Plans Received***	Telford	B2	B	Change of Use	Change	-666	0.132
TWC/2020/0454	Magna House, Stafford Park 9, Stafford Park, Telford, Shropshire, TF3 3BH	Erection of extension on west elevation to provide mould wash facilities	Telford	B2	B	Extension	Gain	258	2.614
TWC/2019/0709	Cartwrights Waste Disposal Services Ltd, Unit 21, Halesfield 21, Halesfield, Telford, Shropshire, TF7 4NX	Erection of a steel framed open sided cover	Telford	B2	B	New Building	Gain	1011	1.54
TWC/2021/0554	Timber Kit Solutions, Long Lane, Telford, Shropshire, TF6 6HA	Change of use from agricultural site to mixed use site (use classes B2 & B8) (Retrospective)	Rural Area	B2	G	Change of Use	Change	629	0.105
TWC/2017/0220	Pickstock Ashby Ltd, Unit E, Hortonwood 45, Hortonwood, Telford, Shropshire, TF1 7EA	Erection of a single storey extension and roof over existing yard	Telford	B2	B	Extension	Gain	178	4.62
TWC/2020/0737	Unit 8, Hortonwood 33, Hortonwood, Telford, Shropshire, TF1 7FX	Change of use from Gymnasium (use class D2) to B1, B2 & B8	Telford	B2	B	Change of Use	Change	337	0.034
TWC/2019/0840	Land North East of Halesfield Roundabout, Halesfield 18, Halesfield, Telford, Shropshire	Erection of 3no. units with ancillary offices, associated parking, service yards and landscaping	Telford	B2	G	New Building	Gain	1292	2.049
TWC/2021/0677	Site of former Unit E, Tweedale, Madeley, Telford TF7 4JR	Erection of 2no industrial buildings containing 3no units, security fencing and entrance gates ***AMENDED DESCRIPTION AND AMENDED PLANS***	Telford	B2	B	New Building	Gain	2160	0.763

TWC/2017/0882	Recycling House, Rock Road, Ketley, Telford, Shropshire, TF1 5HW	Creation of a hardstanding and the change of use of the land from pasture land to a use for the storage separation and crushing of hardcore, soil and timber and associated materials, storage of skips parking of skip lorries and other associated plant and machinery adjacent to Recycling House, Rock Road, Ketley TF1 5HW Variation of Conditions, 1 (revised site plan), Condition 9 (1 modern wheel wash), Condition 11 (operating hours), Condition 16 (clarification of type of waste) and Condition 17 (Importation limit) and Removal of conditions 31 and 32 (Mineshafts and Landscaping) (previously discharged) of planning permission W2005/0906	Telford	B2	G	Change of Use	Gain	500	2.639
---------------	--	---	---------	----	---	---------------	------	-----	-------

Use Class Net								5753	15.526
Use Class Gross								6419	
TWC/2019/0990	SIG Roofing, Trench Lock 3, Trench Lock, Telford, Shropshire, TF1 5ST	Erection of single storey side extension for storage of materials and creation of on site concrete loop road	Telford	B8	B	Extension	Gain	42	0.214
TWC/2020/0600	Yard, Pave Lane Farm, Pitchcroft Lane, Woodcote, Newport, Shropshire	Change of use of yard and agricultural buildings to storage and distribution use (Use Class B8), erection of security fencing with 2.4m high gates and alterations to existing access	Rural Area	B8	G	Change of Use	Change	1550	1.183
TWC/2019/0840	Land North East of Halesfield Roundabout, Halesfield 18, Halesfield, Telford, Shropshire	Erection of 3no. units with ancillary offices, associated parking, service yards and landscaping	Telford	B8	G	New Building	Gain	5170	2.049
TWC/2021/0554	Timber Kit Solutions, Long Lane, Telford, Shropshire, TF6 6HA	Change of use from agricultural site to mixed use site (use classes B2 & B8) (Retrospective)	Rural Area	B8	G	Change of Use	Change	283	0.105
TWC/2019/0934	Howle Manor, Howle, Newport, Shropshire, TF10 8AY	Change of use of redundant agricultural building to provide storage accommodation (Use Class B8) **AMENDED LOCATION AND BLOCK PLAN SUBMITTED**	Rural Area	B8	G	Change of Use	Change	1300	0.13
TWC/2020/0804	Maidens Of Telford, Deer Park Court, Donnington Wood, Telford, Shropshire, TF2 7NA	Change of use of vacant land to construct additional parking for trailer storage accessed through the existing site ****AMENDED DESCRIPTION AND AMENDED PLANS RECEIVED****	Telford	B8	B	Change of Use	Gain	10173	0.76
TWC/2019/0849	Plot 1, Land East of Queensway HLC, Queensway Hortonwood, Telford, Shropshire	Erection of 2no. Industrial units comprising of use classes B1, B2 and B8 with ancillary offices, car parking, service yards and landscaping ***AMENDED PLANS RECEIVED AND RED BOUNDARY LINE CHANGES***	Telford	B8	G	New Building	Gain	54	1.03
Use Class Net								18572	5.471
Use Class Gross								18572	
Borough Net Totals								27943	25.727
Borough Gross Totals								29381	

Appendix 4b - Other Non-Residential Completed Floorspace 2021/22

Application No	Address	Description	Hierarchy	Use Class	Previous Use	Change	Gain Or Loss	Sq M	Hectares
TWC/2018/0786	Roden Nurseries, Roden Lane, Roden, Telford, Shropshire, TF6 6RD	Change of use of part of horticultural nursery to garden centre use	Rural Area	A1	G	Change of Use	Change	1223	4.5
TWC/2017/0616	Shawbirch Service Station, Shawbirch Road, Shawbirch, Telford, Shropshire, TF1 3QA	Refurbishment of existing petrol filling station including demolition of existing shop and car wash building, forecourt/canopy extension to provide a 6 pump layout, new underground tanks and fuel infrastructure together with a single storey sales building with atm, retaining wall, car washing building, customer parking and external seating and play area	Telford	A1	B	New Building	Gain	328	0.521
TWC/2017/1051	40 Castle Street, Hadley, Telford, Shropshire, TF1 5RA	Change of use of lower floor to use to A5 (hot food takeaway) (amended description)	Telford	A1	B	Change of Use	Change	-103	0.098
TWC/2019/0214	Unit 23, Trench Lock 3, Trench Lock, Telford, Shropshire, TF1 5ST	Application for prior approval from the change of use from A1 to A2	Telford	A1	B	Change of Use	Change	-129	0.13
TWC/2020/0985	Unit 5, 10 Oxford Street, Oakengates, Telford, Shropshire, TF2 6AA	Change of use from existing retail unit (Use Class A1) to a mixed use of cafe (Use Class E(b)) and hot food takeaway (Use Class Sui generis) and the installation of new shopfront and extractor flue *****amended description and plans	Telford	A1	B	Change of Use	Change	-111	0.012
TWC/2019/0249	1 Limes Walk, Oakengates, Telford, Shropshire, TF2 6EP	Change of use from dress shop (Use Class A1) to therapeutic massage shop (Use Class D1)	Telford	A1	B	Change of Use	Change	-66	0.007
TWC/2018/0710	Anstice Memorial Institute Club, 1 Anstice Square, Madeley, Telford, Shropshire, TF7 5BD	Change of use of the ground floor for use as a library, community rooms, café and rental units (comprising of a blanket use class of A1, A2, A3 and A5), and provide an accessible entrance and lift to the first floor. Demolition of store room, Disabled WC to be incorporated into the first floor and refurb of existing male and female toilets. This entails internal alterations, new shop frontages to the rear and side, and a two-storey lift extension to the rear (Full Planning Application)(Amended description)	Telford	A1	B	Change of Use	Gain	83	0.088
TWC/2020/0057	Former Stratford Academy Ltd, Bridge Street, Oakengates, Telford TF2 6AH	Change of use from management training centre (use class D1) to retail units (use class A1)	Telford	A1	B	Change of Use	Change	160	0.089
Use Class Net								1385	5.445
Use Class Gross								1794	
TWC/2018/0710	Anstice Memorial Institute Club, 1 Anstice Square, Madeley, Telford, Shropshire, TF7 5BD	Change of use of the ground floor for use as a library, community rooms, café and rental units (comprising of a blanket use class of A1, A2, A3 and A5), and provide an accessible entrance and lift to the first floor. Demolition of store room, Disabled WC to be incorporated into the first floor and refurb of existing male and female toilets. This entails internal alterations, new shop frontages to the rear and side, and a two-storey lift extension to the rear (Full Planning Application)(Amended description)	Telford	A3	B	Change of Use	Gain	47	0.088
TWC/2020/0941	Norwood House Hotel, Pave Lane, Chetwynd Aston, Newport, Shropshire, TF10 9LQ	Change of use from existing dining/function room (Use class A3) into five hotel bedrooms with communal shower facilities (Use class C1) (part retrospective) and replacement windows *****amended plans received*****	Rural Area	A3	B	Change of Use	Change	-272	0.125
TWC/2020/0362	69 & 69a King Street, Wellington, Telford, Shropshire, TF1 1NS	Conversion from existing residential institution and associated cafe into 1no. dwelling and 1no. house in multiple occupancy *****AMENDED PLANS RECEIVED*****AMENDED	Telford	A3	B	Change of Use	Loss	-89	0.03
Use Class Net								-314	0.243
Use Class Gross								47	
TWC/2017/0840	The Horse and Jockey, Jockey Bank, Ironbridge, Telford, Shropshire, TF8 7PD	Conversion of public house to 1no. dwelling with replacement of 1no. side window with double doors	Telford	A4	B	Change of Use	Loss	-576	0.058

TWC/2020/0095	The Cock Hotel, 148 Holyhead Road, Wellington, Telford, Shropshire, TF1 2DL	Refurbishment of existing public house and hotel, involving the demolition of recent additions to the service area, construction of single storey restaurant, dining area and kitchens with 1no flue. Increase in beer garden area accessed from the car park, extension to the existing car park, removal of first floor extension over ground floor toilets (Full Planning Application) ***AMENDED PLANS RECEIVED***	Telford	A4	B	Extension	Gain	212	0.259
Use Class Net								-364	0.317
Use Class Gross								212	
TWC/2017/1051	40 Castle Street, Hadley, Telford, Shropshire, TF1 5RA	Change of use of lower floor to use to A5 (hot food takeaway) (amended description)	Telford	A5	B	Change of Use	Change	103	0.098
Use Class Net								103	0.098
Use Class Gross								103	
TWC/2020/0941	Norwood House Hotel, Pave Lane, Chetwynd Aston, Newport, Shropshire, TF10 9LQ	Change of use from existing dining/function room (Use class A3) into five hotel bedrooms with communal shower facilities (Use class C1) (part retrospective) and replacement windows ****amended plans received****	Rural Area	C1	B	Change of Use	Change	272	0.125
TWC/2018/0022	Royal Victoria Hotel, St Marys Street, Newport, Shropshire, TF10 7AR	Demolition of rear extension and conversion of hotel into 12 no. apartments	Newport	C1	B	Change of Use	Loss	-722	0.332
TWC/2019/1012	Annexe, 7 Limekiln Lane, Lilleshall, Newport, Shropshire, TF10 9FY	Change of use from existing annexe for use as a holiday let	Rural Area	C1	B	Change of Use	Gain	201	0.025
Use Class Net								-249	0.482
Use Class Gross								473	
TWC/2021/0413	Braeburn, Mill Lane, Wellington, Telford, Shropshire, TF1 1PR	Change of use from residential dwelling (use class C3) into children's care home (use class C2)	Telford	C2	B	Change of Use	Gain	198	0.043
TWC/2016/0562	Site of Lincoln Grange Nursing Home, Lincoln Hill, Ironbridge, Telford, Shropshire	Erection of 53no. dwellings, conversion of former Lincoln Grange Nursing Home into 36no. dwellings following demolition of parts of Lincoln Grange Nursing Home, with associated internal and external works, access road and landscaping ***AMENDED	Telford	C2	B	Change of Use	Loss	-34990	3.5
TWC/2020/0362	69 & 69a King Street, Wellington, Telford, Shropshire, TF1 1NS	Conversion from existing residential institution and associated cafe into 1no. dwelling and 1no. house in multiple occupancy ****AMENDED PLANS RECEIVED**** **AMENDED	Telford	C2	B	Change of Use	Loss	-242	0.03
TWC/2020/0245	Creative Support Care Home, 83 - 85 Church Parade, Wombridge, Telford, Shropshire, TF2 6EY	Conversion of existing care home/rehabilitation centre to form 4 No. Self contained residential units including internal and external alterations, associated staff accommodation and new boundary treatment	Telford	C2	B	Change of Use	Loss	-255	0.141
TWC/2020/0243	63 Broadway, Ketley, Telford, Shropshire, TF1 5AS	Change of use from dwelling (Use Class C3) to childrens residential home (Use Class C2)	Telford	C2	B	Change of Use	Gain	160	0.016
TWC/2021/0083	Standford Lodge, Standford Villa & Orchard Villa, Sambrook, Newport, Shropshire, TF10 8AX	Change of use of Standford Villa from care home (Use Class C2) to residential dwelling (Use Class C3), change of use of Standford Lodge from staff accommodation (Use Class C2) to residential annex (Use Class C3). Creation of a new access and associated parking for Orchard Villa (part-retrospective)	Rural Area	C2	B	Change of Use	Loss	-514	0.39
TWC/2021/0155	Princess Royal Hospital, Grainger Drive, Apley, Telford, Shropshire, TF1 6TF	Erection of a two storey office block ****AMENDED PLANS SUBMITTED****	Telford	C2	B	New Building	Gain	386	0.029
TWC/2021/0206	Princess Royal Hospital, Grainger Drive, Apley, Telford, Shropshire, TF1 6TF	Erection of a single storey extension to provide new lobby entrance and Discharge Lounge plus a canopy over a pair of double doors	Telford	C2	B	Extension	Gain	19	0.002
TWC/2019/0253	Severn Hospice Ltd, Apley Castle, Apley, Telford, Shropshire, TF1 6RH	Erection of 3no. single storey extensions to create therapy/gym room, office and reception	Telford	C2	B	Extension	Gain	76	1.76
Use Class Net								-35162	5.911
Use Class Gross								839	
TWC/2019/0001	Park Lane Centre, Park Lane, Woodside, Telford, Shropshire, TF7 5OZ	Installation of biomass boiler in a prefabricated plant room	Telford	D1	B	New Building	Gain	40	0.004
TWC/2020/0057	Former Stratford Academy Ltd, Bridge Street, Oakengates, Telford TF2 6AH	Change of use from management training centre (use class D1) to retail units (use class A1)	Telford	D1	B	Change of Use	Change	-160	0.089
TWC/2018/0652	Presbytery of Roman Catholic Church of St Mary, High Street, Madeley, Telford, Shropshire, TF7 5HT	Single storey side extension to west elevation, installation of retaining wall, steps and fencing with associated landscaping and internal works (Full Planning Application)	Telford	D1	B	Extension	Gain	3	0.407

TWC/2018/0710	Anstice Memorial Institute Club, 1 Anstice Square, Madeley, Telford, Shropshire, TF7 5BD	Change of use of the ground floor for use as a library, community rooms, café and rental units (comprising of a blanket use class of A1, A2, A3 and A5), and provide an accessible entrance and lift to the first floor. Demolition of store room, Disabled WC to be incorporated into the first floor and refurb of existing male and female toilets. This entails internal alterations, new shop frontages to the rear and side, and a two-storey lift extension to the rear (Full Planning Application)(Amended description)	Telford	D1	B	Change of Use	Gain	215	0.088
TWC/2019/0249	1 Limes Walk, Oakengates, Telford, Shropshire, TF2 6EP	Change of use from dress shop (Use Class A1) to therapeutic massage shop (Use Class D1)	Telford	D1	B	Change of Use	Change	66	0.007
TWC/2017/0244	St Pauls Church, Aqueduct Road, Aqueduct, Telford, Shropshire	Change of use of Scout Headquarters to 1no. dwelling with access	Telford	D1	B	Change of Use	Loss	-83	0.015
TWC/2017/0454	Site of The Vineyard, North Road, Wellington, Telford, Shropshire TF1 3FB	Change of use from Nursery (use class D1) to form 7 no. dwellings (Use class C3) and the Erection of 7no. bungalows with associated car parking and	Telford	D1	B	Change of Use	Loss	-1400	0.459
Use Class Net								-1319	1.069
Use Class Gross								324	
TWC/2018/0517	Unit 41, Ketley Business Park, Ketley, Telford, Shropshire, TF1 5JD	Change of use from industrial warehouse Use Classes B1, B2, B3 (General Industrial) to Gym Use Class D2 (Assembly and	Telford	D2	B	Change of Use	Change	149	0.012
TWC/2020/0737	Unit 8, Hortonwood 33, Hortonwood, Telford, Shropshire, TF1 7EX	Change of use from Gymnasium (use class D2) to B1, B2 & B8	Telford	D2	B	Change of Use	Change	-337	0.034
TWC/2019/0214	Unit 23, Trench Lock 3, Trench Lock, Telford, Shropshire, TF1 2CT	Application for prior approval from the change of use from A1 to D2	Telford	D2	B	Change of Use	Change	129	0.13
TWC/2020/0045	Unit 4B, Kendall Estate, Stafford Park 6, Stafford Park, Telford, Shropshire, TF3 3AT	Change of use from general industrial (use class B2) to health and fitness centre (use class D2) ***Amended Plans	Telford	D2	B	Change of Use	Change	666	0.132
TWC/2018/0710	Anstice Memorial Institute Club, 1 Anstice Square, Madeley, Telford, Shropshire, TF7 5BD	Change of use of the ground floor for use as a library, community rooms, café and rental units (comprising of a blanket use class of A1, A2, A3 and A5), and provide an accessible entrance and lift to the first floor. Demolition of store room, Disabled WC to be incorporated into the first floor and refurb of existing male and female toilets. This entails internal alterations, new shop frontages to the rear and side, and a two-storey lift extension to the rear (Full Planning Application)(Amended description)	Telford	D2	B	Change of Use	Gain	-345	0.088
TWC/2018/0710	Anstice Memorial Institute Club, 1 Anstice Square, Madeley, Telford, Shropshire, TF7 5BD	Change of use of the ground floor for use as a library, community rooms, café and rental units (comprising of a blanket use class of A1, A2, A3 and A5), and provide an accessible entrance and lift to the first floor. Demolition of store room, Disabled WC to be incorporated into the first floor and refurb of existing male and female toilets. This entails internal alterations, new shop frontages to the rear and side, and a two-storey lift extension to the rear (Full Planning Application)(Amended description)	Telford	D2	B	Extension	Gain	37	0.088
Use Class Net								299	0.484
Use Class Gross								981	
TWC/2021/0705	The Body Barn, Moorfield Lane, Newport, Shropshire, TF10 9EH	Siting of 3no. shipping containers and the erection of a single storey extension to north elevation (Part retrospective)	Rural Area	E	G	Extension	Gain	63	0.107
TWC/2021/0705	The Body Barn, Moorfield Lane, Newport, Shropshire, TF10 9EH	Siting of 3no. shipping containers and the erection of a single storey extension to north elevation (Part retrospective)	Rural Area	E	G	Mobile / Portacabin	Gain	37	0.107
Use Class Net								100	0.214
Use Class Gross								100	
TWC/2020/0794	Wm Morrison Supermarkets Plc, Spring Hill, Wellington, Telford, Shropshire, TF1 1RP	Erection of a single storey extension to North elevation and the installation of a vehicle parking canopy on existing service yard ****AMENDED PLANS & ADDITIONAL INFORMATION RECEIVED****	Telford	E(a)	B	Extension	Gain	286	0.036
TWC/2022/0136	Dobbies Garden Centre, Station Road, Donnington, Telford, Shropshire, TF2 8JY	Change of use of 2no. car parking spaces to allow the erection of a kiosk (Use Class Sui Generis) to create a sales office and associated parking	Telford	E(a)	B	Change of Use	Change	-15	0.014

TWC/2021/0854	7 Crown Street, Wellington, Telford, Shropshire, TF1 1LP	Change of use from former retail unit (use class E(a)) to wine bar (use class sui generis) on ground floor including the creation of 2no. apartments on first floor and 2no. apartments on the second floor (use class C3), installation of a new shop front, rendering of first floor and replacement and re-alignment of windows and doors ****AMENDED PLANS RECEIVED**** ****AMENDED DESCRIPTION****	Telford	E(a)	B	Change of Use	Loss	-266	0.012
TWC/2017/0044	Units 3 & 4 Mere Park Garden Centre	Erection of 1no. foodstore, 4no. retail units and 1no. cafe/restaurant unit with formation of new access onto the A41 and associated parking, landscaping and servicing	Newport	E(a)	G	Extension	Gain	273	0.158
TWC/2020/0868	47 & 47A Bank Road, Dawley Bank, Telford, Shropshire, TF4 2BB	Conversion of a vacant shop and connecting dwelling to form 1no. dwelling, including the erection of a front canopy and porch, wall and associated landscaping ****AMENDED DESCRIPTION****	Telford	E(a)	B	Change of Use	Loss	-20	0.045
TWC/2021/1048	Rosie In The Garden, Unit 13 Birchfield Way, Lawley, Telford, Shropshire, TF3 5BZ	Change of use from a florist shop (Use Class E) to a tattooist (Use Class E)	Telford	E(a)	B	Change of Use	Change	-78	0.01
TWC/2020/0853	SBA Dawley Bank, Telford, Shropshire, TF4 2LQ	Change of use of ground floor from retail unit (use class E(a)) to mixed use of cafe and hot food takeaway (use class sui generis) ****Amended description and amended plans received****	Telford	E(a)	B	Change of Use	Gain	-73	0.012
Use Class Net								107	0.287
Use Class Gross								559	
TWC/2020/0985	Unit 5, 10 Oxford Street, Oakengates, Telford, Shropshire, TF2 6AA	Change of use from existing retail unit (Use Class A1) to a mixed use of cafe (Use Class E(b)) and hot food takeaway (Use Class Sui generis) and the installation of new shopfront and extractor flue ****amended description and plans	Telford	E(b)	B	Change of Use	Change	111	0.012
TWC/2021/0377	5 Market Square, Wellington, Telford, Shropshire, TF1 1BP	Change of use from a dessert eatery (use class E(b)) to the sale of hot and cold foods (use class E(b) and sui generis)	Telford	E(b)	B	Change of Use	Change	-81	0.008
Use Class Net								30	0.02
Use Class Gross								111	
TWC/2021/0712	Unit 6, 125 King Street, Wellington, Telford, Shropshire, TF1 1NJ	Change of use to a taxi office	Telford	E(g)(i)	B	Change of Use		-41	0.09
TWC/2021/0554	Timber Kit Solutions, Long Lane, Telford, Shropshire, TF6 6HA	Change of use from agricultural site to mixed use site (use classes B2 & B8) (Retrospective)	Rural Area	E(g)(i)	G	Change of Use	Change	93	0.105
TWC/2021/0133	2-4 Crown Street, Wellington, Telford, Shropshire, TF1 1LP	Change of use from existing retail units on ground floor and upper floor offices into 2no. ground floor retail units (Use Class E(a)) and 2no. one bed dwellings on first floor and 1no. two bed dwelling on second floor, including the incorporation of 1no. roof light ****AMENDED DESCRIPTION****	Telford	E(g)(i)	B	Change of Use	Loss	-169	0.02
Use Class Net								-117	0.215
Use Class Gross								93	
TWC/2020/0650	Site of The Wildings, Pave Lane, Chetwynd Aston, Newport, Shropshire	Change of use of land from non-curtilage garden land to a mixed use comprising of non-curtilage garden land and forest school (alternative provision schooling) (sui-generis) and development of an associated outdoor building including toilet	Rural Area	F1	G	Change of Use	Gain	140	0.64
Use Class Net								140	0.64
Use Class Gross								140	
TWC/2021/0686	11 Tan Bank, Wellington, Telford, Shropshire, TF1 1HJ	Siting of 1no. modular portakabin building ****Amended Plans received****	Telford	F1(a)	B	Mobile / Portacabin		45	0.086
TWC/2020/0598	Redhill Primary School, Gatcombe Way, Priorslee, Telford, Shropshire, TF2 9CZ	Erection of 1no. office building	Telford	F1(a)	B	New Building	Gain	25	1.332
TWC/2020/0533	Newport Girls High School, Wellington Road, Newport, Shropshire, TF10 7HL	Erection of a two storey extension to accommodate a dining hall, kitchen facilities, additional classrooms, toilets, covered canopy and additional	Newport	F1(a)	B	Extension	Gain	726	1.889
TWC/2021/0519	11 Church Street, Wellington, Telford, Shropshire, TF1 1DD	Conversion of former academy into 2no. apartments	Telford	F1(a)	B	Change of Use	Loss	-86	0.018
TWC/2020/0416	Short Wood (Hen Rise Woods), New Works Lane, Little Wenlock, Telford, Shropshire	Change of use of woodland to Forest School and erection of 1no. storage shed and 1no. toilet shed	Telford	F1(a)	G	Change of Use	Change	6100	0.61
TWC/2021/0396	Tibberton C Of E Primary School, Maslan Crescent, Tibberton, Newport, Shropshire, TF10 8NN	Erection of a single storey side and rear extension for additional teaching space and	Rural Area	F1(a)	B	Extension	Gain	26	2.88
Use Class Net								6836	6.815
Use Class Gross								6922	
TWC/2020/1108	Elim Pentecostal Church, Brookdale, Hadley, Telford, Shropshire, TF1 6LP	Siting of 1no. shipping container for use as a bereavement hub ****AMENDED PLANS RECEIVED****	Telford	F1(f)	B	Mobile / Portacabin	Gain	128	0.097
Use Class Net								128	0.097
Use Class Gross								128	

TWC/2021/0265	Wellbank Villa, Pickstock, Newport, Shropshire, TF10 8AH	Change of use of outbuilding to hairdressing salon and associated works including the provision of parking places (Part retrospective)	Rural Area	F2(a)	G	Change of Use	Change	52	0.021
Use Class Net								52	0.021
Use Class Gross								52	
TWC/2020/1079	Aqualate Golf Centre, Stafford Road, Newport, Shropshire, TF10 9BV	Erection of 1no. workshop	Rural Area	F2(c)	B	New Building	Gain	240	0.05
Use Class Net								240	0.05
Use Class Gross								240	
TWC/2020/0416	Short Wood (Hen Rise Woods), New Works Lane, Little Wenlock, Telford, Shropshire	Change of use of woodland to Forest School and erection of 1no. storage shed and 1no. toilet shed	Telford	Other	G	Change of Use	Change	-6100	0.61
Use Class Net								-6100	0.61
Use Class Gross								0	
TWC/2021/1048	Rosie In The Garden, Unit 13 Birchfield Way, Lawley, Telford, Shropshire, TF3 5B7	Change of use from a florist shop (Use Class E) to a tattooist (sui generis)	Telford	SG	B	Change of Use	Change	78	0.01
TWC/2020/0853	88A Dawley Bank, Telford, Shropshire, TF4 2LQ	Change of use of ground floor from retail unit (use class E(a)) to mixed use of cafe and hot food takeaway (use class sui-generis) ****Amended description and amended plans received****	Telford	SG	B	Change of Use	Gain	73	0.012
TWC/2020/0853	88A Dawley Bank, Telford, Shropshire, TF4 2LQ	Change of use of ground floor from retail unit (use class E(a)) to mixed use of cafe and hot food takeaway (use class sui-generis) ****Amended description and amended plans received****	Telford	SG	B	Extension	Gain	31	0.012
TWC/2021/0304	Tweedale Fire Station, Bridgenoth Road Cuckoo Oak Green, Telford, Shropshire, TF7 4JD	Erection of single storey extension to the appliance bay and internal alterations and refurbishment of part of the existing fire station***Amended plans received****	Telford	SG	B	Extension	Gain	37	0.07
TWC/2020/0557	Sugden Farm, Sugden Lane, Sugden, Telford, Shropshire, TF6 6NA	Erection of 1no. poultry building with associated feed bins (ENVIRONMENTAL STATEMENT SUBMITTED)	Rural Area	SG	G	New Building	Gain	2571	2.5
TWC/2020/0661	Sugden Farm, Sugden Lane, Sugden, Telford, Shropshire, TF6 6NA	Erection of covered wash down area and pesticide filling area	Rural Area	SG	G	New Building	Gain	432	0.043
TWC/2020/0600	Yard, Pave Lane Farm, Pitchcroft Lane, Woodcote, Newport, Shropshire	Change of use of yard and agricultural buildings to storage and distribution use (Use Class B8), erection of security fencing with 2.4m high gates and alterations to existing access	Rural Area	SG	G	Change of Use	Change	-1550	1.183
TWC/2018/0646	Site of Sunnyside Farm, Ellerdine Heath, Telford, Shropshire TF6 6RL	Conversion of existing two storey barn and alterations to existing single storey barn including raising roof to provide annex (Additional information submitted)	Rural Area	SG	G	Change of Use	Loss	-100	0.5
TWC/2020/0920	Land north of Rodenhurst Business Park, Rodenhurst Lane, Rodington Heath, Telford, Shropshire SY4 4QU	Erection of 6 No. poultry units to contain approximately 300,000 broilers, together with air scrubbing systems, associated feed bins, control rooms, gate house, water tank, gas tanks, plant room and generator (ENVIRONMENTAL STATEMENT SUBMITTED) *** AMENDED INFORMATION SUBMITTED ***	Rural Area	SG	G	New Building	Gain	16966	6.5
TWC/2021/0768	Field House, Rodington, Telford, Shropshire, SY4 4RF	Application for Prior Notification of agricultural development for the erection of 1no. agricultural building	Rural Area	SG	G	New Building	Gain	193	6.1
TWC/2018/0106	Crescent Farm, Waters Upton, Telford, Shropshire, TF6 6NP	Erection of 1no. horse lunge pen and 1no. horse walker pen	Rural Area	SG	G	New Building	Gain	16	25.09
TWC/2018/0106	Crescent Farm, Waters Upton, Telford, Shropshire, TF6 6NP	Erection of 1no. horse lunge pen and 1no. horse walker pen	Rural Area	SG	G	New Building	Gain	13	25.09
TWC/2019/0745	Site of Crescent Farm, Waters Upton, Telford, Shropshire	Application for prior notification of agricultural development for a proposed agricultural building	Rural Area	SG	G	New Building	Gain	815	7.65
TWC/2021/0377	5 Market Square, Wellington, Telford, Shropshire, TF1 1BP	Change of use from a dessert eatery (use class E(b)) to the sale of hot and cold foods (use class E(b) and sui generis)	Telford	SG	B	Change of Use	Change	81	0.008
TWC/2021/1192	Wm Morrison Supermarkets Plc, Spring Hill, Wellington, Telford, Shropshire, TF1 1RP	Change of use of 2no. car parking spaces to allow the erection of a kiosk (Use Class Sui Generis) to create a sales office and associated parking	Telford	SG	B	New Building	Gain	15	0.21
TWC/2020/0248	Harper Adams University, Edgmond, Newport, Shropshire, TF10 8NB	Erection of new single storey agricultural shed for the storage of agricultural vehicles, equipment and grain *****amended plans received****	Rural Area	SG	G	New Building	Gain	328	1.49
TWC/2020/0183	Land adjacent Sigma & Staubli House, Plot A Hadley Park East, Hadley, Telford, Shropshire	Erection of a drive-thru building (use class A3/A5) use with associated landscaping, access, and parking (Part retrospective)	Telford	SG	B	New Building	Gain	192	0.3
TWC/2021/0712	Unit 6, 125 King Street, Wellington, Telford, Shropshire, TF1 1NL	Change of use to a taxi office	Telford	SG	B	Change of Use	Change	41	0.09
TWC/2019/0320	Timber Yard, Duke Street, St Georges, Telford, Shropshire, TF2 9BA	Change of use to storage yard with associated office (use class Sui-Generis), including the regularisation of site boundary (Retrospective)	Telford	SG	B	Change of Use	Change	-118	0.5

TWC/2022/0136	Dobbies Garden Centre, Station Road, Donnington, Telford, Shropshire, TF2 8JY	Change of use of 2no. car parking spaces to allow the erection of a kiosk (Use Class Sui Generis) to create a sales office and associated parking	Telford	SG	B	Change of Use	Change	15	0.014
TWC/2017/0882	Recycling House, Rock Road, Ketley, Telford, Shropshire, TF1 5HW	Creation of a hardstanding and the change of use of the land from pasture land to a use for the storage separation and crushing of hardcore, soil and timber and associated materials, storage of skips parking of skip lorries and other associated plant and machinery adjacent to Recycling House, Rock Road, Ketley TF1 5HW Variation of Conditions, 1 (revised site plan), Condition 9 (1 modern wheel wash), Condition 11 (operating hours), Condition 16 (clarification of type of waste) and Condition 17 (importation limit) and Removal of conditions 31 and 32 (Mineshafts and Landscaping) (previously discharged) of planning permission W2005/0906	Telford	SG	G	Change of Use	Gain	-500	2.639
TWC/2018/0529	Sunnyslads Farm, Wrockwardine, Telford, Shropshire, TF5 0BJ	Notification for prior approval for a proposed change of use of 2no. agricultural buildings to 2no. dwellinghouses (Use class C3) and for associated operational development	Rural Area	SG	G	Change of Use	Loss	-239	0.047
TWC/2017/0465	Wesley House, 4 Station Hill, St Georges, Telford, TF2 9AA	Conversion of former Homeless Hostel into 12no. residential units with associated landscaping and parking	Telford	SG	B	Change of Use	Loss	-600	0.128
TWC/2021/0265	Wellbank Villa, Pickstock, Newport, Shropshire, TF10 8AH	Change of use of outbuilding to hairdressing salon and associated works including the provision of parking places	Rural Area	SG	G	Change of Use	Change	-52	0.021
TWC/2021/0549	Preston Grange, Preston Upon The Weald Moors, Telford, Shropshire, TF6 6D1	Erection of 1no. portal steel framed silage clamp building (Retrospective)	Rural Area	SG	G	New Building	Gain	390	0.07
TWC/2021/0554	Timber Kit Solutions, Long Lane, Telford, Shropshire, TF6 6HA	Change of use from agricultural site to mixed use site (use classes B2 & B8) (Retrospective)	Rural Area	SG	G	Change of Use	Change	-1006	0.105
TWC/2014/0492	Lubtree Park, Humber Lane, The Humber, Telford, Shropshire, TF2 8LW	Conversion of former agricultural buildings into eight dwellings and erection of replacement agricultural storage	Rural Area	SG	G	Change of Use	Loss	-3560	1.44
TWC/2018/1046	Site of Roden Nurseries, Roden Lane, Roden, Telford, Shropshire TF6 6BP	Reserved matters application for the erection of 9no. dwellings pursuant to TWC/2015/0220 including details for access, appearance, landscaping, layout and scale ***Amended Plans Received***	Rural Area	SG	G	Change of Use	Loss	-5200	0.52
TWC/2019/0970	1 Crown Street, Wellington, Telford, Shropshire, TF1 1LP	Conversion of the first and second floors of building into 3no. apartments to include reconfiguration of entrance at ground floor **AMENDED PLANS SUBMITTED**	Telford	SG	B	Change of Use	Loss	-42	0.013
TWC/2020/0708	Puleston House Farm, Puleston, Newport, Shropshire, TF10 8AF	Erection of 1no. steel portal frame building to be used as a covered washdown area	Rural Area	SG	G	New Building	Gain	191	0.019
TWC/2020/0258	Puleston Farm, Puleston, near Chetwynd, Shropshire, TF10 8AF	Application for prior notification of agricultural development for the erection of 1no. building	Rural Area	SG	G	New Building	Gain	987	0.099
TWC/2021/0732	Pump House, Puleston Road, Chetwynd, Newport, Shropshire TF10 8AF	Installation of 1no Ultra violet (UV) kiosk, 1no. Motor Control Centre (MCC) kiosk and 1no Chlorination kiosk	Rural Area	SG	B	New Building	Gain	72	0.026
TWC/2019/0934	Howle Manor, Howle, Newport, Shropshire, TF10 8AY	Change of use of redundant agricultural building to provide storage accommodation (Use Class B8) **AMENDED LOCATION AND BLOCK PLAN SUBMITTED**	Rural Area	SG	G	Change of Use	Change	-1300	0.13
TWC/2020/0077	Moor Bank Farm, Crudgington, Telford, Shropshire, TF6 6JU	Erection of 1no agricultural livestock building, 2no silos and creation of new access	Rural Area	SG	G	New Building	Gain	463	0.046
TWC/2020/0152	Moor Bank Farm, Crudgington, Telford, Shropshire, TF6 6JU	Erection of 1no. agricultural livestock building and creation of new access	Rural Area	SG	G	New Building	Gain	464	0.046
TWC/2020/1098	Moor Bank Farm, Crudgington, Telford, Shropshire, TF6 6JU	Erection of an agricultural manure store and all associated works ****ADDITIONAL INFORMATION SUBMITTED****	Rural Area	SG	G	New Building	Gain	571	0.572
TWC/2020/0567	Land East & South of Angel Centre, Oxbaston, Near High Erccall, Telford, Shropshire,	Erection of a free range egg unit with associated feed bins and hardstandings (ENVIRONMENTAL STATEMENT CONSULTED)	Rural Area	SG	G	New Building	Gain	6210	32
TWC/2020/0476	Pumping Station, Longswood, Telford, Shropshire	Installation of a Chlorination Kiosk	Rural Area	SG	G	New Building	Gain	19	0.363
TWC/2021/0538	Land adjacent Pumping Station, Longswood, Telford, Shropshire TF6 6HN	Change of use from agricultural land to operational site and the installation 2no. boreholes with associated kiosks (BH4 & BH5) and associated crane pads, access and landscaping	Rural Area	SG	G	New Building	Gain	52	0.8
TWC/2020/0861	Longdon House, Longdon On Tern, Telford, Shropshire, TF6 6LE	Erection of agricultural building for storage of materials, machinery and equipment	Rural Area	SG	G	New Building	Gain	98	0.01

TWC/2018/0989	Meeson Hall Farm, Meeson, Telford, Shropshire, TF6 6PG	Application for prior notification of agricultural development for the erection of a machinery store, link corridor and carport	Rural Area	SG	G	New Building	Gain	428	10.5
TWC/2021/0549	Preston Grange, Preston Upon The Weald Moors, Telford, Shropshire, TF6 6D1	Erection of 1no. portal steel framed silage clamp building (Retrospective)	Rural Area	SG	G	New Building	Gain	390	0.07
TWC/2018/0786	Roden Nurseries, Roden Lane, Roden, Telford, Shropshire, TF6 6RP	Change of use of part of horticultural nursery to garden centre use	Rural Area	SG	G	Change of Use	Change	-1223	4.5
Use Class Net								16742	131.536
Use Class Gross								32232	
Borough Net Totals								-17463	154.554
Borough Gross totals								45350	

Appendix 5 - Non-Residential Under Construction 2021/22

Application No	Address	Description	Hierarchy	Change	Gain/Loss	Use Class	Sq M
Admaston and Bratton							
TWC/2019/0672	Land adjacent, 39 Shawbirch Road, Admaston, Telford, Shropshire	Erection of new medical centre (Class D1) with associated parking and landscaping ***AMENDED DRAINAGE STRATEGY RECEIVED*** **AMENDED PLANS RECEIVED SHOWING REDUCED RED LINE BOUNDARY TO NORTH OF SITE ON LOCATION PLAN, PROPOSED SITE PLAN, SOFT LANDSCAPE PROPOSALS AND TREE PLAN PLUS AMENDED REPORTS RECEIVED REFLECTING CHANGES TO RED LINE BOUNDARY (PLANNING STATEMENT, DESIGN & ACCESS STATEMENT, TRANSPORT STATEMENT AND GROUND CONDITIONS REPORT)***	Telford	New Building	Gain	D1	1409
Ward Totals							1409
Apley Castle							
TWC/2018/0477	Site of former Maxell Europe Ltd, Hortonwood, Telford, Shropshire	Reserved Matters application (Appearance, Landscaping, Layout and Scale) for a local centre comprising of a Costa coffee drive-thru and 6 terraced retail units (Phase 1b) pursuant to TWC/2014/0746 (Outline application for the erection of a mixed use development comprising of up to 495no. dwellings (Use Class C3), a local centre (Use Class A1) and public open space with associated access and landscaping following the demolition of existing factory (All other matters reserved) ***AMENDED APPLICATION SITE BOUNDARY***	Telford	New Building	Gain	A1	836
TWC/2018/0477	Site of former Maxell Europe Ltd, Hortonwood, Telford, Shropshire	Reserved Matters application (Appearance, Landscaping, Layout and Scale) for a local centre comprising of a Costa coffee drive-thru and 6 terraced retail units (Phase 1b) pursuant to TWC/2014/0746 (Outline application for the erection of a mixed use development comprising of up to 495no. dwellings (Use Class C3), a local centre (Use Class A1) and public open space with associated access and landscaping following the demolition of existing factory (All other matters reserved) ***AMENDED APPLICATION SITE BOUNDARY***	Telford	New Building	Gain	A3	167
Ward Totals							1003
Arleston							
TWC/2019/0753	Land between Arleston Lane & Dawley Road, Arleston, Telford, Shropshire	Erection of an Extra Care Facility containing 70no. self contained flats (Use Class C2) and associated communal/public facilities and erection of 103no. residential dwellings (Use Class C3) with associated access, landscaping and ancillary works ***AMENDED	Telford	New Building	Gain	C2	766
Ward Totals							766
Church Aston and Lilleshall							
TWC/2018/0578	Land adjacent 1 Humber Lane, The Humbers, Telford, Shropshire TF2 8LN	Conversion, extensions and external alterations to 2no. former canal side buildings to create 1no. dwelling house with detached garage and 1no. temporary holiday property *****AMENDED PLANS AND DOCUMENTS RECEIVED***** ***Amended Drainage Information Received***	Rural Area	Extension	Gain	C1	0
TWC/2018/0578	Land adjacent 1 Humber Lane, The Humbers, Telford, Shropshire TF2 8LN	Conversion, extensions and external alterations to 2no. former canal side buildings to create 1no. dwelling house with detached garage and 1no. temporary holiday property *****AMENDED PLANS AND DOCUMENTS RECEIVED***** ***Amended Drainage Information Received***	Rural Area	Change of Use	Gain	C1	31
TWC/2020/0602	Moor Farm, Kynnersley Drive, Lilleshall, Newport, Shropshire, TF10 9HT	Conversion of existing cow shed into 1no. residential dwelling	Rural Area	Change of Use	Loss	SG	-380
TWC/2014/0492	Lubstree Park, Humber Lane, The Humbers, Telford, Shropshire, TF2 8LW	Conversion of former agricultural buildings into eight dwellings and erection of replacement agricultural storage building	Rural Area	New Building	Loss	SG	1140
Ward Totals							791
Dawley and Aqueduct							
TWC/2021/0336	10 Bartlett Road, Dawley, Telford, Shropshire, TF4 3LU	Change of use from domestic dwelling (use class C3) to residential home (use class C2) ***Additional information submitted***	Telford	Change of Use	Gain	C2	162

TWC/2021/1223	Site of former Queens Arms, Southall Road, Dawley, Telford TF4 3LY	Erection of a two storey building to accommodate a ground floor retail unit and 5no. flats at first floor	Telford	New Building	Gain	E(a)	346
TWC/2021/0778	Dawley Bargain Centre, 36 High Street, Dawley, Telford, Shropshire, TF4 2EX	Change of use from a furniture shop (Use Class E(a)) to fast food takeaway (sui generis) at ground floor, 1no. residential flat at first floor and the erection of 1no. flue ****AMENDED DESCRIPTION**** ****AMENDED PLANS RECEIVED****	Telford	Change of Use	Loss	E(a)	-180
TWC/2020/0357	Telford Langley School, Duce Drive, Dawley, Telford, Shropshire, TF4 3JS	Erection of a new teaching block ***amended plans received***	Telford	New Building	Gain	F1(a)	2006
TWC/2021/0778	Dawley Bargain Centre, 36 High Street, Dawley, Telford, Shropshire, TF4 2EX	Change of use from a furniture shop (Use Class E(a)) to fast food takeaway (sui generis) at ground floor, 1no. residential flat at first floor and the erection of 1no. flue ****AMENDED DESCRIPTION**** ****AMENDED PLANS RECEIVED****	Telford	Change of Use	Loss	SG	90
Ward Totals							2424
Donnington							
TWC/2021/0003	Four Ways, Queens Road, Donnington, Telford, Shropshire, TF2 8BZ	Reinstatement of former shop use (use class E(a)) and the erection of part two storey and part single storey side extension, erection of a detached garage, installation of roller shutters, steel barrier rail, timber fence with associated parking and landscaping (Part Retrospective) ****amended description and amended plans	Telford	Change of Use	Gain	E(a)	100
TWC/2021/0003	Four Ways, Queens Road, Donnington, Telford, Shropshire, TF2 8BZ	Reinstatement of former shop use (use class E(a)) and the erection of part two storey and part single storey side extension, erection of a detached garage, installation of roller shutters, steel barrier rail, timber fence with associated parking and landscaping (Part Retrospective) ****amended description and amended plans	Telford	Extension	Gain	SG	70
Ward Totals							170
Dothill							
TWC/2019/0041	Land opposite Dothill Primary School, Severn Drive, Dothill, Telford TF1 3JB	Application under Section 191 for a Lawful Development Certificate for an existing use as a public house with associated car park	Telford	New Building	Gain	A4	443
TWC/2020/0446	Site of Haughmond Court & Apley Court, Dothill, Telford, Shropshire	Demolition of Apley Court and erection of Extra Care Facility containing 81no. one and two bedroom self-contained apartments (Use Class C2) and associated communal / public facilities, with associated access and landscape works	Telford	New Building	Gain	C2	2850
TWC/2020/0446	Site of Haughmond Court & Apley Court, Dothill, Telford, Shropshire	Demolition of Apley Court and erection of Extra Care Facility containing 81no. one and two bedroom self-contained apartments (Use Class C2) and associated communal / public facilities, with associated access and landscape works	Telford	New Building	Gain	E(a)	45
TWC/2020/0446	Site of Haughmond Court & Apley Court, Dothill, Telford, Shropshire	Demolition of Apley Court and erection of Extra Care Facility containing 81no. one and two bedroom self-contained apartments (Use Class C2) and associated communal / public facilities, with associated access and landscape works	Telford	New Building	Gain	E(b)	115
Ward Totals							3453
Edgmond							
TWC/2021/0237	Shray Hill Farm, Shray Hill, Telford, Shropshire, TF6 6JR	Change of use of Building A and B from agricultural use to laboratories, storage, meeting room and amenities building. Demolition of Building D (Retrospective) ***Amended Description of Proposal and Amended Plans***	Rural Area	Change of Use	Change	SG	-341
TWC/2021/0523	New House Farm, Chester Road, Chetwynd, Newport, Shropshire, TF10 8BN	Erection of 3no. livestock buildings with associated infrastructure for pig rearing following the demolition of existing barns	Rural Area	New Building	Replace	SG	5100
TWC/2020/0346	Cherrington Manor, Cherrington, Newport, Shropshire, TF10 8PL	Application for prior approval for the proposed change of use of agricultural building to 3no. dwellings (Use Class C3)	Rural Area	Change of Use	Loss	SG	-588
TWC/2018/0648	Barn adjacent The Old Rectory, Preston Upon The Weald Moors, Telford, Shropshire TF6 6DH	Conversion of barn to a 1no. dwellinghouse ****AMENDED PLANS RECEIVED****	Rural Area	Change of Use	Loss	SG	-152
TWC/2021/0460	Site of Showell Grange, Sambrook, Newport, Shropshire	Conversion of barn into 1no. dwelling with associated amenity space and parking	Rural Area	Change of Use	Loss	SG	-185
Ward Totals							3834
Ercall							

TWC/2019/1043	Site of Wellington and District Cottage Care, 79 Haygate Road, Wellington, Telford, Shropshire	Conversion of Day Centre (Use Class C2 residential institutions) to 6no. residential apartments and erection of 9no. bungalows, car parking, landscaping and associated works ***AMENDED PLANS AND INFORMATION RECEIVED***	Telford	Change of Use	Loss	C2	-1745
Ward Totals							-1745
Ercall Magna							
TWC/2019/0478	Site of The Swan PH, Waters Upton, Telford, Shropshire	Erection of a new community building and 3no. apartments following the partial demolition of the derelict building and erection of semi-detached 2no. houses	Rural Area	New Building	Change	D1	121
TWC/2020/0459	The Grange, Cold Hatton, Telford, Shropshire. TF6 6QU	Erection of 2no. agricultural structures	Rural Area	New Building	Gain	SG	183
TWC/2018/1025	Site of Windy Oak Farm, 66 Ellerdine Heath, Telford, Shropshire. TF6 6RN	Conversion of existing outbuildings into 5no. residential properties, including associated landscaping, access and drainage works	Rural Area	Change of Use	Loss	SG	-725
TWC/2019/0715	New Farm, Roden Lane, Roden, Telford, Shropshire, TF6 6BS	Notification for Prior Approval for a Proposed Change of Use of agricultural building to 1no. dwellinghouse (Class C3)	Rural Area	Change of Use	Loss	SG	-361
TWC/2020/1037	Former Farmstead, Poynton Manor, Poynton, Telford TF6 6BW	Conversion of agricultural buildings into 4no. dwellings, demolition of 6no. farm buildings and the creation of associated garaging, residential storage and car ports (Full Planning Application) ***AMENDED PLANS***	Rural Area	Demolition	Loss	SG	-1290
TWC/2020/1037	Former Farmstead, Poynton Manor, Poynton, Telford TF6 6BW	Conversion of agricultural buildings into 4no. dwellings, demolition of 6no. farm buildings and the creation of associated garaging, residential storage and car ports (Full Planning Application) ***AMENDED PLANS***	Rural Area	Change of Use	Loss	SG	-551
TWC/2020/1037	Former Farmstead, Poynton Manor, Poynton, Telford TF6 6BW	Conversion of agricultural buildings into 4no. dwellings, demolition of 6no. farm buildings and the creation of associated garaging, residential storage and car ports (Full Planning Application) ***AMENDED PLANS***	Rural Area	Change of Use	Loss	SG	-145
TWC/2016/1171	Site Of Meeson Hall, Meeson, Telford, Shropshire TF6 6PG	Conversion of existing farm outbuildings into 6no. apartments and parking (Full Planning Application) *** Amended red line boundary ***	Rural Area	Change of Use	Loss	SG	-1124
TWC/2016/0923	Site of Long Lane Livery, Long Lane, Telford, Shropshire TF6 6HL (New House Farm)	Conversion of agricultural barns to 2no. residential dwellings and the erection of 2no. garages **Amended Plans and Description**	Rural Area	Change of Use	Loss	SG	-1500
Ward Totals							-5392
Hadley and Leegomery							
TWC/2020/0870	Land East of Queensway HLC (Plot 8), Queensway, Hortonwood, Telford, Shropshire	Erection of an Industrial Building (Class B2) with ancillary office accommodation and associated parking; servicing area; and infrastructure works	Telford	New Building	Gain	B2	700
TWC/2021/0010	Land opposite Wrap Film Systems Ltd, Plot 11B Hortonwood 40, Hortonwood, Telford, Shropshire	Erection of an industrial/warehouse facility (Use Class B2/B8) with servicing, ancillary office accommodation (Use Class E(g)), car parking, formation of new access, landscaping and associated works	Telford	New Building	Gain	B8	10328
TWC/2021/0010	Land opposite Wrap Film Systems Ltd, Plot 11B Hortonwood 40, Hortonwood, Telford, Shropshire	Erection of an industrial/warehouse facility (Use Class B2/B8) with servicing, ancillary office accommodation (Use Class E(g)), car parking, formation of new access, landscaping and associated works	Telford	New Building	Gain	E(g)(i)	1177
Ward Totals							12205
Haygate							
TWC/2020/0053	Rear of 19 Church Street, Wellington, Telford TF1 1SN	Conversion of offices (Use Class B1) into 3no. residential apartments (Use Class C3)(Part-Retrospective)*AMENDED DESCRIPTION AND INFORMATION SUBMITTED*	Telford	Change of Use	Loss	B1(a)	-109
TWC/2020/0555	Former Home and Leisure & Clifton Cinema, Bridge Road, Wellington, Telford, Shropshire	Application for prior notification of proposed demolition of vacant retail building	Telford	Demolition	Loss	D2	-786
TWC/2021/0854	7 Crown Street, Wellington, Telford, Shropshire, TF1 1LP	Change of use from former retail unit (use class E(a)) to wine bar (use class sui generis) on ground floor including the creation of 2no. apartments on first floor and 2no. apartments on the second floor (use class C3), installation of a new shop front, rendering of first floor and replacement and re-alignment of windows and doors ****AMENDED PLANS RECEIVED**** ****AMENDED DESCRIPTION****	Telford	Change of Use	Loss	E(a)	-133
Ward Totals							-1028
Ketley and Overdale							

TWC/2020/0536	The White Lion Inn, Holyhead Road, Ketley, Telford, Shropshire, TF1 5DJ	Conversion and enlargement of public house into retail use including the demolition of existing outbuildings and the creation of a bin store and plant area with associated alterations to existing carpark **AMENDED PLANS RECEIVED**	Telford	Change of Use	Change	A4	-573
TWC/2019/1034	53 & 55 Ketley Park Road, Ketley, Telford, Shropshire, TF1 5BF	Application for prior approval for the change of use from offices (use Class B1a) to 2no. dwellings (use class C3)	Telford	Change of Use	Loss	B1(a)	-169
TWC/2017/0887	Site of Reynolds House, Ironmasters Way, Telford Town Centre, Telford, Shropshire	Erection of three storey office development with associated landscaping, parking and infrastructure	Telford	New Building	Gain	B1(a)	2821
TWC/2021/0147	Unit 10, Telford Bridge Retail Park, Colliers Way, Old Park, Telford, Shropshire, TF3 4PB	Change of use of existing service yard into a garden centre (Use class E(a)) and the erection of a 4m high paladin fence	Telford	Change of Use	Change	E(a)	526
TWC/2020/0536	The White Lion Inn, Holyhead Road, Ketley, Telford, Shropshire, TF1 5DJ	Conversion and enlargement of public house into retail use including the demolition of existing outbuildings and the creation of a bin store and plant area with associated alterations to existing carpark **AMENDED PLANS RECEIVED**	Telford	Change of Use	Change	E(a)	573
TWC/2020/0536	The White Lion Inn, Holyhead Road, Ketley, Telford, Shropshire, TF1 5DJ	Conversion and enlargement of public house into retail use including the demolition of existing outbuildings and the creation of a bin store and plant area with associated alterations to existing carpark **AMENDED PLANS RECEIVED**	Telford	Extension	Change	E(a)	134
TWC/2021/0147	Unit 10, Telford Bridge Retail Park, Colliers Way, Old Park, Telford, Shropshire, TF3 4PB	Change of use of existing service yard into a garden centre (Use class E(a)) and the erection of a 4m high paladin fence	Telford	Change of Use	Change	SG	-526
Ward Totals							2786
Madeley and Sutton Hill							
TWC/2020/0301	Haughton School, Queen Street, Madeley, Telford, Shropshire, TF7 4BW & John Randall County Primary School, Queen Street, Madeley, Telford, Shropshire, TF7 4DS	Erection of 1no. two storey side extension, 2no. single storey rear extensions, 1no. single storey front extension, 1no. single storey link extension and parking/drop-off alterations ****AMENDED PLANS & ADDITIONAL INFORMATION RECEIVED****	Telford	Extension	Gain	D1	1329
TWC/2021/0426	5-6 Horseshoes Court, High Street, Madeley, Telford, Shropshire, TF7 5BG	Change of use from office (use class E(g)) to tanning salon (use class Sui Generis)	Telford	Change of Use	Change	E(g)(i)	-133
TWC/2021/0426	5-6 Horseshoes Court, High Street, Madeley, Telford, Shropshire, TF7 5BG	Change of use from office (use class E(g)) to tanning salon (use class Sui Generis)	Telford	Change of Use	Change	SG	133
Ward Totals							1329
Malinslee and Dawley Bank							
TWC/2017/0952	Land South and East of Telford Ice Rink, Park Avenue, Southwater, Telford Town Centre, Telford, Shropshire	Planning application for reserved matters approval of appearance, scale and layout of 80 bedroom extension to currently approved 100 bedroom hotel	Telford	Extension	Gain	C1	3000
Ward Totals							3000
Newport South and East							
TWC/2021/1111	Linden Hall Surgery, Station Road, Newport, Shropshire, TF10 7EN	Change of use of outbuilding into medical consulting rooms with reception, wc, 10no rooflights and installation of access ramp (Full Planning Application) *** Amended description and plans ***	Newport	Change of Use	Change	B8	-68
TWC/2021/1111	Linden Hall Surgery, Station Road, Newport, Shropshire, TF10 7EN	Change of use of outbuilding into medical consulting rooms with reception, wc, 10no rooflights and installation of access ramp (Full Planning Application) *** Amended description and plans ***	Newport	Change of Use	Change	E(e)	68
Ward Totals							0
Priorslee							
TWC/2019/0228	Land adjacent The Shires, Shifnal Road, Priorslee, Telford TF2 9NN	Erection of three storey 71 bedroom care home with landscaping, associated access and parking	Telford	New Building	Gain	C2	3408
Ward Totals							3408
Wrockwardine							
TWC/2020/0904	Somerwood Stud Farm, Rodington, Telford, Shropshire, SY4 4RF	Conversion of existing stable building into holiday accommodation ****AMENDED PLANS RECEIVED****	Rural Area	Change of Use	Change	C1	90
TWC/2018/0878	Former Huntington Lane Surface Mine Site, Little Wenlock, Telford, Shropshire	Change of use to develop an agriquestrian centre to include 20 enclosed stables and ancillary areas, 6 bay Dutch barn, menage and car parking	Telford	New Building	Gain	D2	449

TWC/2020/0146	New Works Farm, New Works, Telford, Shropshire, TF6 5BP	Conversion of barn to 1no. dwelling following demolition of existing agricultural buildings, erection of a single storey front and side extension and erection of a detached garage *** ECOLOGY INFORMATION SUBMITTED *****ADDITIONAL COAL MINING INFORMATION SUBMITTED*****	Rural Area	Change of Use	Loss	SG	-109
---------------	---	--	------------	---------------	------	----	------

Ward Totals **430**

Wrockwardine Wood and Trench

TWC/2020/1004	Site of former Swancote Foods, Hortonwood 7, Hortonwood, Telford, Shropshire	Erection of 2no. new mixed use units (use classes E(g)(ii) & (iii), B2 and B8), external alterations to 2no. existing units, demolition of 1no. existing unit and the installation of a bin store & bicycle shed	Telford	New Building	Gain	B1(a)	672
---------------	--	--	---------	--------------	------	-------	-----

TWC/2019/0354	Ulva Ltd, Unit D, Hortonwood 31, Hortonwood, Telford, Shropshire, TF1 7GS	Erection of side extension, new service yard, new palisade fencing and gates and additional car parking	Telford	Extension	Gain	B2	498
---------------	---	---	---------	-----------	------	----	-----

Ward Totals **1170**

Borough Totals **3013**

Appendix 6a - Employment Land New Build Not Started 2021/22

Application No	Address	Description	Hierarchy	Use Class	Change	Gain/Loss	Sq M
Ercall Magna							
twc/2020/0288	Former Dairy Crest Ltd, Crudgington, Telford, Shropshire	Development of 800 square metres of rural workshops with associated parking spaces and roads	Rural Area	B1(c)	New Building	Gain	800
Ward Total							800
Hadley and Leegomery							
TWC/2018/0159	Land adjacent Golden Bear Products Ltd, Hortonwood 40, Hortonwood, Telford, Shropshire	Erection of 2no. industrial units (Use Class B1(c), B2 and B8) ***Amended Plan and Application Form Received***	Telford	B1(a)	New Building	Gain	526
TWC/2018/0162	Land West of Household Recycling Centre, Hortonwood 60, Hortonwood, Telford, Shropshire	Erection of 1no. industrial unit (Use Class B1(c), B2 and B8)	Telford	B1(a)	New Building	Gain	896
TWC/2018/0164	Land Opposite of Wrap Film Systems Ltd, Hortonwood 40, Hortonwood, Telford, Shropshire TF1 7FA	Erection of 2no. industrial units (Use Class B1(c), B2 and B8) ***Amended Application Form Received***	Telford	B1(a)	New Building	Gain	560
TWC/2021/1092	BAE Systems, Hadley Castle Works, Hortonwood, Telford, Shropshire, TF1 9OW	Erection of 1no. industrial building (Use Class B2) *** AMENDED PLANS RECEIVED ***	Telford	B2	New Building	Gain	594
TWC/2020/0717	Pickstock Telford Ltd, Hortonwood 45, Hortonwood, Telford, Shropshire, TF1 7FA	Erection of 1no. storage building *****amended plans received*****	Telford	B2	New Building	Gain	1470
TWC/2018/0159	Land adjacent Golden Bear Products Ltd, Hortonwood 40, Hortonwood, Telford, Shropshire	Erection of 2no. industrial units (Use Class B1(c), B2 and B8) ***Amended Plan and Application Form Received***	Telford	B8	New Building	Gain	3797
TWC/2018/0164	Land Opposite of Wrap Film Systems Ltd, Hortonwood 40, Hortonwood, Telford, Shropshire TF1 7FA	Erection of 2no. industrial units (Use Class B1(c), B2 and B8) ***Amended Application Form Received***	Telford	B8	New Building	Gain	6276
TWC/2018/0161	Land adjacent Furniture Link UK Ltd, Hortonwood 65, Hortonwood, Telford, Shropshire TF1 7GZ	Erection of 1no. industrial unit (Use Class B8) *** Amended description, plans and applicant details ***	Telford	B8	New Building	Gain	13468
TWC/2018/0162	Land West of Household Recycling Centre, Hortonwood 60, Hortonwood, Telford, Shropshire	Erection of 1no. industrial unit (Use Class B1(c), B2 and B8)	Telford	B8	New Building	Gain	8015
TWC/2020/0680	Land adjacent Colfresco, Hortonwood 45, Hortonwood, Telford, Shropshire	Outline application for the erection of 1no. industrial unit (Use Class B2/B8) up to 15,226 square metres and access with all other matters reserved *** AMENDED DESCRIPTION ***	Telford	B8	New Building	Gain	13996
Ward Total							49598
Ironbridge Gorge							
TWC/2014/0113	Land off, Beech Road, Madeley, Telford, Shropshire	Outline planning application for part demolition of existing care village and nursery followed by construction of not more than 90no. open market residential dwellings, 3no registered social care bungalows, a new plant nursery and cafe, including the provision of means of access***Amended description, application form and plans received***	Telford	B1(a)	New Building	Loss	200
Ward Total							200
Madeley and Sutton Hill							
TWC/2021/0127	Land corner of Halesfield 18 & 20, Off Halesfield 20, Halesfield, Telford TF7 4QU	Reserved matters application for 21 industrial units (total of 4660sqm) with new site access, layout, car parking arrangement, appearance, landscaping, and scale in pursuant to outline permission TWC/2017/0221	Telford	B2	New Building	Gain	4207
Ward Total							4207
Newport South and East							
TWC/2011/0871	Land to the East and West of Station Road, Newport, Shropshire,	Erection for up to 350 no. dwellings (Use Class C3); extra care housing (Use Class C2); 4.5ha of employment land (Use Classes B1, B2 and B8); public open space and landscaping provision including sports pitch and landscaped park; demolition of existing industrial buildings; highway works and associated infrastructure development (Outline to include Access)***AMENDED DESCRIPTION, AMENDED PLANS AND SUPPORTING DOCUMENTS & REVISED ENVIRONMENTAL STATEMENT***	Newport	B8	New Building	Gain	5500
Ward Total							5500
The Nedge							

TWC/2021/0417	Plot 5B, Telford 54 Business Park, Nedge Hill, Telford TF3 3AJ	Erection of 1no. two storey industrial unit (use class E(G)) and 1no. outbuilding with associated car park and service yard	Telford	B8	New Building	Gain	667
TWC/2021/0417	Plot 5B, Telford 54 Business Park, Nedge Hill, Telford TF3 3AJ	Erection of 1no. two storey industrial unit (use class E(G)) and 1no. outbuilding with associated car park and service yard	Telford	B8	New Building	Gain	30
TWC/2015/0666	Plot 6, Telford 54, Nedge Hill, Telford, Shropshire	Outline application for up to 60,000sqm employment development (Use Classes B1b, B1c, B2 and B8) with the creation of 2no. access points off Naird Lane, with all other matters reserved	Telford	B8	New Building	Gain	35837
Ward Total							36534
Wrockwardine							
TWC/2021/0560	Timber Kit Solutions, Long Lane, Telford, Shropshire, TF6 6HA	Erection of a commercial unit and associated access for the manufacture of timber frames	Rural Area	B2	New Building	Gain	1020
TWC/2021/0167	Rodenhurst Hall, Rodenhurst Lane, Rodington Heath, Telford, Shropshire. SY4 4OU	Demolition of existing building and the erection of replacement mixed use building (Use class B2 & B8 use)	Rural Area	B2	New Building	Replace	428
TWC/2020/0043	Land north of Isombridge Farm House, Isombridge, Telford, Shropshire	Change of use of land to siting of 7no. Glamping pods, portaloos, toilet and shower unit, storage shed and associated works	Rural Area	B8	New Building	Change	7
Ward Total							1455
Wrockwardine Wood and Trench							
TWC/2021/1174	Site of Stairplan, Hortonwood 1, Hortonwood, Telford TF1 7GN	Erection of one industrial unit (Use Class B2/B8) *** AMENDED PLANS RECEIVED ***	Telford	B2	New Building	Gain	1658
TWC/2021/1002	Makita Manufacturing Europe, Hortonwood 7, Hortonwood, Telford, Shropshire. TF1 7YX	Erection of a high bay storage facility***Amended Plans***	Telford	B8	New Building	Gain	1470
Ward Total							3128
Borough Totals							101422

Appendix 6b - Other Employment Land Not Started 2021/22

Application No	Address	Description	Change	Use Class	Sq M
Brookside					
TWC/2018/0779	Garages adjacent The Compound, Burford, Brookside, Telford, Shropshire	Change of use from garages to 2no. light industrial units (Use Class B1)	Change of Use	B1(c)	24
Ward Total					24
Church Aston and Lilleshall					
TWC/2021/1105	Site of Red House Inn, Brockton, Newport, Shropshire TF10 9EW	Demolition of original steel framed play barn and the erection of a 13no bedroom hotel and associated works	Demolition	B8	-275
Ward Total					-275
College					
TWC/2019/0631	Vine House, 2 Vineyard Road, Wellington, Telford, Shropshire, TF1 1HA	Application for prior approval for the change of use from offices (use Class B1a) to dwelling houses (use class C3)	Change of Use	B1(a)	-355
TWC/2020/0204	26-28 Church Street, Wellington, Telford, Shropshire, TF1 1DS	Change of use from offices (B1a) to a 9-bedroom House in Multiple Occupation (HMO). (Sui Generis)	Change of Use	B1(a)	-220
Ward Total					-575
Dawley and Aqueduct					
TWC/2018/0692	Doseley Body & Paint Centre, Tarrs Yard, Station Road, Dawley, Telford, Shropshire, TF4 2NJ	Erection of side extension to south elevation to create motor body repair workshop and parking area following the demolition of existing storage buildings on site *****Additional information recieved*****	Demolition	B2	70
TWC/2018/0692	Doseley Body & Paint Centre, Tarrs Yard, Station Road, Dawley, Telford, Shropshire, TF4 2NJ	Erection of side extension to south elevation to create motor body repair workshop and parking area following the demolition of existing storage buildings on site *****Additional information recieved*****	Extension	B2	780
Ward Total					850
Edgmond					
TWC/2019/0985	The Workshop, High Street, Edgmond, Newport, Shropshire, TF10 8JW	Demolition of existing two storey unit and erection of one detached two storey dwelling with associated works and access *****amended plan received*****	Demolition	B2	-30
TWC/2020/0981	Wappenshall Wharf, Wappenshall Road, Wappenshall, Telford, Shropshire, TF6 6DE	Erection of a single storey side extension to warehouse 1 for storage use and restoring of original retaining walls (Full Planning Application)	Extension	B8	104
Ward Total					74
Ercall Magna					
TWC/2021/1020	Coopers Sausage Rolls, Poynton Road, Roden, Telford, Shropshire, TF6 6EN	Application under section 192 for a certificate of lawfulness for the proposed development of a food cold store	Extension	B2	117
TWC/2018/0966	The Mill House, 27 Great Bolas, Telford, Shropshire, TF6 6PQ	Conversion of existing outbuilding to holiday let with associated single storey side extension, first floor extension over existing building, installation of a flue and rooflights and the installation of decking area *****AMENDED PLANS AND ECOLOGY INFORMA	Change of Use	B8	-38
Ward Total					79
Haygate					
TWC/2019/0782	Turner House, 45 Market Street, Wellington, Telford, Shropshire, TF1 1DT	Change of use from office (use class B1) to one bedroom apartment (use class C3)	Change of Use	B1(a)	-72
Ward Total					-72

Horsehay and Lightmoor

TWC/2017/0330	Site of T A Jervis & Co. Ltd & land adjacent, Holywell Lane, Lightmoor, Telford TF4 3QJ	Demolition of existing commercial buildings/remediation of haulage yard and outline application for residential development of up to 17no. dwellings, including means of access with all other matters reserved	Demolition	B8	-807
---------------	---	---	------------	----	------

Ward Total **-807**

Ironbridge Gorge

TWC/2019/1032	Wesley Rooms Annexe, Jockey Bank, Ironbridge, Telford, Shropshire. TF8 7PD	Change of use from commercial offices (Use Class B1) to 1no. dwellinghouse (Use Class C3)	Change of Use	B1(a)	-62
TWC/2021/0013	Site of 3 Southside, Church Hill, Ironbridge, Telford, TF8 7PZ	Conversion of former stabling undercroft/outbuilding to 1no. holiday let including the erection of a single storey side extension (Full Planning Application) ****AMENDED PLANS RECEIVED****	Change of Use	B8	-24

Ward Total **-86**

Ketley and Overdale

TWC/2019/0285	Offices, 36 Park Lane, Old Park, Telford TF3 4TE	Change of use from light industrial (B1) to retail (A1)	Change of Use	B1(c)	-146
---------------	--	---	---------------	-------	------

Ward Total **-146**

Madeley and Sutton Hill

TWC/2019/0317	Besblock Ltd, Halesfield 21, Halesfield, Telford, Shropshire, TF7 4NF	Erection of single storey side extension, 2m high fence, 2m high automatic tracked sliding gates and alterations to parking area	Extension	B2	92
TWC/2021/0780	Former Brintons Ltd, Halesfield 15, Halesfield, Telford, Shropshire, TF7 4LE	Proposed refurbishment consisting of part demolition of an existing building and associated structures; and external improvements with all associated works *** Amended plans ***	Demolition	B2	-5388
TWC/2017/0716	Land rear of 19 Park Street & High View, Park Street, Madeley, Telford, Shropshire TF7 5LB	Erection of 2no. detached houses and 1no. detached bungalow ***AMENDED PLANS RECEIVED***	Change of Use	B8	-2342

Ward Total **-7638**

Newport North and West

TWC/2016/0589	Land to the rear of 40-42 St Marys Street, Newport, Shropshire TF10 7AB	Erection of 6no. dwellings and block of 3no. flats with associated vehicular and pedestrian access and parking, following demolition of existing industrial/warehouse buildings (Full Planning) ***AMENDED DESCRIPTION AND AMENDED PLANS RECEIVED***	Demolition	B8	-305
---------------	---	--	------------	----	------

Ward Total **-305**

Newport South and East

TWC/2011/0871	Land to the East and West of Station Road, Newport, Shropshire,	Erection for up to 350 no. dwellings (Use Class C3); extra care housing (Use Class C2); 4.5ha of employment land (Use Classes B1, B2 and B8); public open space and landscaping provision including sports pitch and landscaped park; demolition of existing industrial buildings; highway works and associated infrastructure development (Outline to include Access)***AMENDED DESCRIPTION, AMENDED PLANS AND SUPPORTING DOCUMENTS & REVISED ENVIRONMENTAL STATEMENT***	Demolition	B8	-4756
---------------	---	---	------------	----	-------

Ward Total **-4756**

Oakengates and Ketley Bank

TWC/2021/0838	Kiyokuni Europe Ltd, Holyhead Road, Snedshill, Telford, Shropshire, TF2 9TY	Erection of a single storey extension to the North-East, North-West and South-West elevations with associated works	Extension	B2	1165
---------------	---	---	-----------	----	------

TWC/2017/1021	Builders Yard adjacent and land rear of, 5 Main Road, Ketley Bank, Telford, Shropshire	Demolition of existing buildings and outline planning application for the erection of 3no. dwellings with all matters reserved *** Amended site boundary and description ***	Demolition	B2	-75
TWC/2021/0763	Garages adjacent 8 Maurice Lee Avenue, Oakengates, Telford TF2 6HF	Outline planning application for the demolition of existing 14no. garage block and erection of 2no. dwelling with all matters reserved ***amended drainage layout received***	Demolition	B8	-180
TWC/2019/0891	30 Market Street, Oakengates, Telford, Shropshire, TF2 6ED	Partial change of use of ground and first floor of existing building (mixed use class) to 2no. studio apartments (use class C3) **AMENDED ELEVATIONS SUBMITTED**	Change of Use	B8	-44
Ward Total					866
The Nedge					
TWC/2019/0479	Northwood Hygiene Products Ltd, Stafford Park 10, Stafford Park, Telford, Shropshire, TF3 3AB	Erection of two side extensions and front office extension **Amended Description**	Extension	B1(a)	668
TWC/2020/0267	Nationwide House, Stafford Park 7, Stafford Park, Telford, Shropshire, TF3 3BQ	Application for Prior Approval for the change of use from business (Use Class B1) to state-funded school or registered nursery	Change of Use	B1(a)	-339
TWC/2021/0404	Unit 5A, Telford 54 Business Park, Nedge Hill, Telford, Shropshire, TF3 3AL	Change of Use from B1(b&c) Business, B2 General Industrial and B8 Storage & Distribution to F1(a) Learning & Non-Residential Institutions	Change of Use	B2	-1628
TWC/2022/0087	Schneider Electric, Stafford Park 5, Stafford Park, Telford, Shropshire. TF3 3BL	Erection of a two storey mezzanine floor, 2no. loading bays, charging building and canopy	Mezzanine	B2	1798
TWC/2022/0087	Schneider Electric, Stafford Park 5, Stafford Park, Telford, Shropshire. TF3 3BL	Erection of a two storey mezzanine floor, 2no. loading bays, charging building and canopy	Extension	B2	425
TWC/2020/0216	Luceco Distribution Centre, Stafford Park 1, Stafford Park, Telford. Shropshire. TF3 3BD	Erection of two storey extension to south elevation to create staff canteen and meeting rooms	Extension	B8	371
TWC/2019/0479	Northwood Hygiene Products Ltd, Stafford Park 10, Stafford Park, Telford, Shropshire, TF3 3AB	Erection of two side extensions and front office extension **Amended Description**	Demolition	B8	-1799
TWC/2019/0479	Northwood Hygiene Products Ltd, Stafford Park 10, Stafford Park, Telford, Shropshire, TF3 3AB	Erection of two side extensions and front office extension **Amended Description**	Extension	B8	15586
Ward Total					15082
Wrockwardine					
TWC/2021/1008	Maxwell Amenity Ltd, Units 1-7, Allscott, Telford, Shropshire, TF6 5DY	Change of use of unit 3 from storage and sales area to office and sales area and installation of a new shop front	Change of Use	B8	-244
TWC/2021/1045	Land adjacent Sunnymead, Walcot, Telford TF6 5EQ	Extension to caravan storage area	Extension	B8	1165
Ward Total					921
Borough					3236

Appendix 6c - Other Non-residential Land Not Started 2022

Application No	Address	Description	Change	Use Class	Sq M
Church Aston and Lilleshall					
TWC/2021/1105	Site of Red House Inn, Brockton, Newport, Shropshire TF10 9EW	Demolition of original steel framed play barn and the erection of a 13no bedroom hotel and associated works	New Building	C1	570
TWC/2021/0979	Fielden House, 30 Chetwynd Aston, Newport, Shropshire, TF10 9LF	Change of use of residential dwelling (use class C3a) to a residential care home (use class C2)***Amended Ownership Certificate***	Change of Use	C2	407
TWC/2022/0130	Clytha Cottage, Woodcote, Newport, Shropshire, TF10 9AX	Erection of an agricultural barn for storage of machinery, hay and straw	New Building	SG	288
TWC/2021/0449	Whitegates, Kynnersley Drive, Lilleshall, Newport, Shropshire, TF10 9HT	Application for prior notification of agricultural development for 2no. proposed agricultural buildings	New Building	SG	361
TWC/2021/0449	Whitegates, Kynnersley Drive, Lilleshall, Newport, Shropshire, TF10 9HT	Application for prior notification of agricultural development for 2no. proposed agricultural buildings	New Building	SG	630
TWC/2020/0356	Land opposite Woodside Farm, Kynnersley Drive, Lilleshall, Shropshire TF10 9HS	Creation of manege, parking, associated boundary treatments and the erection of stables/equestrian buildings *****amended plans and supporting information received*****	New Building	SG	366
TWC/2020/1107	Jardwood Farm, The Hinks, Lilleshall, Newport, Shropshire TF10 9HT	Conversion of agricultural buildings into 4no. dwellings *****AMENDED PLANS SUBMITTED*****	Change of Use	SG	-1300
Ward Total					1322
College					
TWC/2018/0788	33 New Street, Wellington, Telford, Shropshire, TF1 1LU	Proposed change of use from retail use (use class A1) at first level to residential dwelling (use class C3) including the installation of new access and roof light	Change of Use	A1	-40
TWC/2019/0699	The William Withering, 45 New Street, Wellington, Telford, Shropshire, TF1 1LU	Partial demolition of first floor with associated alterations to create a roof garden	Demolition	A1	-8
TWC/2019/0699	The William Withering, 45 New Street, Wellington, Telford, Shropshire, TF1 1LU	Partial demolition of first floor with associated alterations to create a roof garden	Extension	A4	358
TWC/2020/0108	Lord Nelson Hotel, 11-13 Park Street, Wellington, Telford, Shropshire, TF1 3AE	Conversion of hotel (Use Class C1) to 10no. residential apartments (Use Class C3) with 1no retained managers apartment and replace rear door with timber window (Full planning application)	Change of Use	C1	-965
TWC/2021/0081	Unit 1, Town House, The Parade, Wellington, Telford, Shropshire, TF1 1PY	Change of use from nightclub (Use Class Sui Generis) to mixed use of night club and martial arts club (Use Class Sui Generis & Use Class E(d)) and the installation of flood lights ***AMENDED PLANS RECEIVED***	Change of Use	E	120
TWC/2021/0453	17 Market Square, Wellington, Telford, Shropshire, TF1 1BU	Conversion of former office accommodation, toilets and store into a self contained second floor 2 bedroom flat (Full Planning Application)	Change of Use	E(b)	-98
TWC/2021/0874	17 Market Square, Wellington, Telford, Shropshire, TF1 1BU	Conversion of former restaurant function room into a self contained first floor 1no. bedroom flat (Full Planning Application)	Change of Use	E(b)	-98
TWC/2021/0594	Former New College Telford, King Street, Wellington, Telford, TF1 1NY	Change of use of former college (use class F1(a)) into supported accommodation consisting of 28no. self-contained units with associated staff facilities (use class sui generis) with associated internal and external alterations, including insertion of 2no. roof lights, 1no. window to rear elevation, replacement of existing boarding, installation of new disabled access ramp and handrails. Alteration to existing access (Full Planning Application) ***AMENDED DESCRIPTION***	Change of Use	F1(a)	-1245

TWC/2021/0594	Former New College Telford, King Street, Wellington, Telford, TF1 1NY	Change of use of former college (use class F1(a)) into supported accommodation consisting of 28no. self-contained units with associated staff facilities (use class sui generis) with associated internal and external alterations, including insertion of 2no. roof lights, 1no. window to rear elevation, replacement of existing boarding, installation of new disabled access ramp and handrails. Alteration to existing access (Full Planning Application) ***AMENDED DESCRIPTION***	Change of Use	SG	1245
TWC/2021/0081	Unit 1, Town House, The Parade, Wellington, Telford, Shropshire, TF1 1PY	Change of use from nightclub (Use Class Sui Generis) to mixed use of night club and martial arts club (Use Class Sui Generis & Use Class E(d)) and the installation of flood lights ***AMENDED PLANS RECEIVED***	Change of Use	SG	-120
TWC/2020/0204	26-28 Church Street, Wellington, Telford, Shropshire, TF1 1DS	Change of use from offices (B1a) to a 9-bedroom House in Multiple Occupation (HMO) (Sui Generis)	Change of Use	SG	220
TWC/2019/0699	The William Withering, 45 New Street, Wellington, Telford, Shropshire. TF1 1LU	Partial demolition of first floor with associated alterations to create a roof garden	Demolition	SG	-114
Ward Total					-745
Dawley and Aqueeduct					
TWC/2020/0380	4 High Street, Dawley, Telford, Shropshire, TF4 2ET	Conversion of former retail premises to 2no. flats, the retention of the existing shop unit and the conversion of a former workshop to 1no. bedsit ****AMENDED PLANS RECEIVED**** ****AMENDED DESCRIPTION****	Change of Use	A1	-146
TWC/2020/0347	Former Dun Cow Public House, New Street, Dawley, Telford, Shropshire	Erection of a 77 bedroom Care Home (Use Class C2), erection of a 1.8m retaining wall and creation of a new access and car park	New Building	C2	3414
TWC/2021/1051	41 & 42 Attwood Terrace, Dawley, Telford, Shropshire, TF4 2HH	Change of use from 2no. dwellings (use class C3) into 1no. residential institution (use class C2) including the erection of a single storey rear extension	Extension	C2	24
TWC/2021/1051	41 & 42 Attwood Terrace, Dawley, Telford, Shropshire, TF4 2HH	Change of use from 2no. dwellings (use class C3) into 1no. residential institution (use class C2) including the erection of a single storey rear extension	Change of Use	C2	177
TWC/2021/0852	Site of Castle Lodge, Attwood Terrace, Dawley, Telford, TF4 2HQ	Demolition of existing buildings and the erection of 14no. bungalows with associated access, parking, drainage and infrastructure works ****AMENDED PLANS AND ADDITIONAL INFORMATION SUBMITTED****	Demolition	C2	-1300
TWC/2020/0696	Site of former Cheshire Cheese, Doseley Road, Dawley, Telford, Shropshire	Demolition of former public house and erection of 10no. dwellings together with access drive, drainage and associated external works ***AMENDED PLANS RECEIVED***	Demolition	SG	-450
Ward Total					1719
Donnington					
TWC/0000/0000	Land North/East of Lodge Road Caravan Site, Donnington Wood Way, Donnington Wood, Telford TF2 7QD	Erection of 233 dwellings, 76 unit care home (Use Class C2) including Community Hub (Use Class E(b)), 20 unit supported accommodation, areas of public open space and LEAP, access, drainage and associated works	Change of Use	E	405
TWC/0000/0000	Land North/East of Lodge Road Caravan Site, Donnington Wood Way, Donnington Wood, Telford TF2 7QD	Erection of 233 dwellings, 76 unit care home (Use Class C2) including Community Hub (Use Class E(b)), 20 unit supported accommodation, areas of public open space and LEAP, access, drainage and associated works	Change of Use	SG	-405
Ward Total					0
Dothill					

TWC/2020/0446	Site of Haughmond Court & Apley Court, Dothill, Telford, Shropshire	Demolition of Apley Court and erection of Extra Care Facility containing 81no. one and two bedroom self-contained apartments (Use Class C2) and associated communal / public facilities, with associated access and landscape works	Demolition	C2	-3786
---------------	---	---	------------	----	-------

Ward Total **-3786**

Edgmond

TWC/2020/0575	Morgans Family Butcher And Farm Shop, The Chestnuts, Waters Upton, Telford, Shropshire, TF6 6NP	Erection of a single storey front and side extension ****AMENDED PLANS RECEIVED & RED LINE CHANGE****	Extension	E(a)	60
TWC/2020/0814	Site of Edgmond Primitive Methodist Church and Sunday School, Shrewsbury Road, Edgmond, Shropshire TF10 8HT	Conversion of chapel into 2no. dwellings and demolition of the Sunday School and erection of 1no. detached dwelling***Bat Survey Received*** *****AMENDED PLANS RECEIVED****	Demolition	F1(f)	-131
TWC/2020/0814	Site of Edgmond Primitive Methodist Church and Sunday School, Shrewsbury Road, Edgmond, Shropshire TF10 8HT	Conversion of chapel into 2no. dwellings and demolition of the Sunday School and erection of 1no. detached dwelling***Bat Survey Received*** *****AMENDED PLANS RECEIVED****	Change of Use	F1(f)	-129
TWC/2020/0943	41 Maslan Crescent, Tibberton, Newport, Shropshire, TF10 8PB	Erection of a single storey front, side and rear extension and partial change of use to a dog grooming business *** Amended elevations and floorplans ***	Change of Use	SG	12
TWC/2021/0132	Land fronting Sheepbridge Cottages, Sheep Bridge, Tibberton, Newport, TF10 8PW	Erection of 1no. agricultural building for storage of equipment and animal food	New Building	SG	188
TWC/2018/0850	Site of Rodway Manor Farm, Cherrington, Newport, Shropshire TF6 6EF	Conversion of barn into 4no. dwellings and the conversion of existing garage into self-contained annex	Change of Use	SG	-390
TWC/2018/0031	Land between Preston Cottage 15 & Village Farm, Preston Upon The Weald Moors, Telford, Shropshire TF6 6DH	Reserved matters application for the erection of 1no. detached dwelling and garage including details for layout, scale, appearance and landscaping following Demolition of Agricultural Barn	Demolition	SG	-900
TWC/2019/0557	Tibberton Manor, Tibberton, Newport, Shropshire, TF10 8LZ	Erection of 1no. agricultural building following part demolition of existing timber pole barn	New Building	SG	184
TWC/2019/0557	Tibberton Manor, Tibberton, Newport, Shropshire, TF10 8LZ	Erection of 1no. agricultural building following part demolition of existing timber pole barn	Demolition	SG	110
TWC/2021/0761	Shray Hill Farm, Shray Hill, Telford, Shropshire, TF6 6JR	Demolition of existing barn and creation of a new courtyard	Demolition	SG	108
TWC/2021/0955	Shray Hill Farm, Shray Hill, Telford, Shropshire, TF6 6JR	Application for Prior Notification of agricultural development for the erection of 1no. open fronted agricultural steel framed building	New Building	SG	480
TWC/2021/0923	Preston Grange, Preston Upon The Weald Moors, Telford, Shropshire, TF6 6DJ	Erection of a side extension for cattle housing to existing agricultural building	Extension	SG	432
TWC/2021/0924	Preston Grange, Preston Upon The Weald Moors, Telford, Shropshire, TF6 6DJ	Erection of a side extension for the storage of hay, straw and agricultural machinery	Extension	SG	390

Ward Total **414**

Ercall

TWC/2018/0550	Morris Care Centre, Wrekin Court Nursing Home, Pooler Close, off Holyhead Road, Wellington, Telford, TF1 2EH	Erection of link extension to existing nursing home to adjacent single storey building (former dental practice) to provide a new main entrance and associated facilities; change of use of Unit 5 to Use Class C2, creation of garden/amenity area to frontage from existing car park and formation of new car park to the southern end of the site *****AMENDED PLANS RECEIVED*****	Change of Use	C2	142
---------------	--	--	---------------	----	-----

TWC/2018/0550	Morris Care Centre, Wrekin Court Nursing Home, Pooler Close, off Holyhead Road, Wellington, Telford, TF1 2EH	Erection of link extension to existing nursing home to adjacent single storey building (former dental practice) to provide a new main entrance and associated facilities; change of use of Unit 5 to Use Class C2, creation of garden/amenity area to frontage from existing car park and formation of new car park to the southern end of the site *****AMENDED PLANS RECEIVED*****	Extension	C2	19
TWC/2018/0563	Ercall Court Nursing Home, 286 Holyhead Road, Wellington, Telford, Shropshire. TF1 2EF	Erection of a single storey extension to north elevation and a single storey extension to south elevation	Extension	C2	201
TWC/2018/0550	Morris Care Centre, Wrekin Court Nursing Home, Pooler Close, off Holyhead Road, Wellington, Telford, TF1 2EH	Erection of link extension to existing nursing home to adjacent single storey building (former dental practice) to provide a new main entrance and associated facilities; change of use of Unit 5 to Use Class C2, creation of garden/amenity area to frontage from existing car park and formation of new car park to the southern end of the site *****AMENDED PLANS RECEIVED*****	Change of Use	D1	-142
Ward Total					220
Ercall Magna					
TWC/2018/0838	The Bridge House, Wappenshall Road, Wappenshall, Telford, Shropshire, TF6 6DE	Change of use from existing day care facility into restaurant and associated managers accommodation including the erection of an orangery to the north elevation ****AMENDED PLANS AND ADDITIONAL ECOLOGY INFORMATION SUBMITTED****	Change of Use	A3	376
TWC/2018/0838	The Bridge House, Wappenshall Road, Wappenshall, Telford, Shropshire, TF6 6DE	Change of use from existing day care facility into restaurant and associated managers accommodation including the erection of an orangery to the north elevation ****AMENDED PLANS AND ADDITIONAL ECOLOGY INFORMATION SUBMITTED****	Extension	A3	57
TWC/2018/0966	The Mill House, 27 Great Bolas, Telford, Shropshire, TF6 6PQ	Conversion of existing outbuilding to holiday let with associated single storey side extension, first floor extension over existing building, installation of a flue and rooflights and the installation of decking area *****AMENDED PLANS AND ECOLOGY INFORMATION SUBMITTED*****	Change of Use	C1	38
TWC/2018/0966	The Mill House, 27 Great Bolas, Telford, Shropshire, TF6 6PQ	Conversion of existing outbuilding to holiday let with associated single storey side extension, first floor extension over existing building, installation of a flue and rooflights and the installation of decking area *****AMENDED PLANS AND ECOLOGY INFORMATION SUBMITTED*****	Extension	C1	44
TWC/2018/0838	The Bridge House, Wappenshall Road, Wappenshall, Telford, Shropshire, TF6 6DE	Change of use from existing day care facility into restaurant and associated managers accommodation including the erection of an orangery to the north elevation ****AMENDED PLANS AND ADDITIONAL ECOLOGY INFORMATION SUBMITTED****	Change of Use	D1	-376
TWC/2021/0339	Windy Oak Farm, 66 Ellerdine Heath, Telford, Shropshire, TF6 6RN	Relocation of agricultural shed with implement and animal feed storage extension	Extension	SG	70
TWC/2021/0245	Barnes Farm, Rowton Road, Rowton, Telford, Shropshire, TF6 6QX	Erection of 1no. agricultural building to house dairy cows	New Building	SG	1003
TWC/2022/0033	Tern Farm, Tern Lane, Longdon On Tern, Telford, Shropshire, TF6 6LN	Application to determine if prior approval is required for a proposed erection of a grain store for agricultural use	New Building	SG	630
TWC/2021/0674	Land East of Coopers Sausage Rolls, Wrekin Farm Poynton Road, Roden, Telford TF6 6BN	Erection of 1no. steel framed building to house livestock and for storage of hay and straw	New Building	SG	289
TWC/2020/0582	Water Tower (adjacent Lindum House), Roden, Telford, Shropshire	Conversion of a decommissioned water tower to 1no dwelling	Change of Use	SG	-62
Ward Total					2069

Hadley and Leegomery

TWC/2020/0680	Land adjacent Colfresco, Hortonwood 45, Hortonwood, Telford, Shropshire	Outline application for the erection of 1no. industrial unit (Use Class B2/B8) up to 15,226 square metres and access with all other matters reserved *** AMENDED DESCRIPTION ***	New Building	E(g)(i)	1230
---------------	---	--	--------------	---------	------

Ward Total**1230****Haygate**

TWC/2020/0555	Former Home and Leisure & Clifton Cinema, Bridge Road, Wellington, Telford, Shropshire	Application for prior notification of proposed demolition of vacant retail building	Demolition	A1	-1689
TWC/2020/1075	Site of former Home and Leisure and Clifton Cinema, Bridge Road, Wellington, Telford, Shropshire	Change of use and subdivision of existing retail unit into 7no. units (use class E) including external modifications, the creation of a carpark and associated works following the demolition of former Clifton cinema	Change of Use	A1	-1689
TWC/2020/0979	1 Cart Gate, Wellington, Telford, Shropshire, TF1 1RB	Change of use from residential bungalow (use class C3) to business premises for the delivery of disability specific support for children, young people and adults (use class C2)	Change of Use	C2	63
TWC/2020/1075	Site of former Home and Leisure and Clifton Cinema, Bridge Road, Wellington, Telford, Shropshire	Change of use and subdivision of existing retail unit into 7no. units (use class E) including external modifications, the creation of a carpark and associated works following the demolition of former Clifton cinema	Demolition	E	1689
TWC/2022/0037	Telyres, Spring Hill, Wellington, Telford, Shropshire, TF1 3NA	Erection of single storey side extension to form additional MOT bays	Extension	E	156
TWC/2021/0800	Pandel Bathrooms, 19 Bridge Road, Wellington, Telford, Shropshire, TF1 1EA	Application for determine if prior approval is required for the change of use of the ground floor from retail unit (Use Class E(a)) to mixed use of retail and residential (Use Class E(a) & Use Class C3)	Change of Use	E(a)	-47
TWC/2021/0777	The Glebe Centre, Glebe Street, Wellington, Telford, Shropshire, TF1 1JP	Application for prior approval for the change of use from Offices (Use Class E(g)(i)) to 27no. residential apartments (Use Class C3)	Change of Use	E(g)(i)	-846
TWC/2018/0709	Wm Morrison Supermarkets Plc, Spring Hill, Wellington, Telford, Shropshire, TF1 1RP	Installation of canopy and portakabin within existing car park to create car valeting services	New Building	SG	12
TWC/2021/0006	Site of Peter Morris Cars, Wellington, Telford, Shropshire	Reserved matters application pursuant to outline planning application TWC/2017/0316 for the demolition of existing car garage and the erection of 14no. dwellings with access including details of appearance, landscaping, layout & scale	Demolition	SG	-307

Ward Total**-2658****Horsehay and Lightmoor**

TWC/2020/0410	Site of Doseley Industrial Estate, Frame Lane, Doseley, Telford TF4 3BZ	Demolition of disused former industrial units and the erection of 48no. dwellings ***Amended plans and description - reduction in units***	Demolition	E	-207
TWC/2018/0033	Barns adjacent Woodlands Farm, Woodlands Lane, Horsehay, Telford, Shropshire TF4 3QF	Demolition of cart shed and blockwork barn and conversion of barns to 4no. dwellings and the erection of 4no. dwellings ***AMENDED PLANS RECEIVED SHOWING REDUCTION IN HEIGHT OF UNIT B AND ADDITION OF BAT LOFT IN ROOF OF UNIT B***	Demolition	SG	-242
TWC/2018/0033	Barns adjacent Woodlands Farm, Woodlands Lane, Horsehay, Telford, Shropshire TF4 3QF	Demolition of cart shed and blockwork barn and conversion of barns to 4no. dwellings and the erection of 4no. dwellings ***AMENDED PLANS RECEIVED SHOWING REDUCTION IN HEIGHT OF UNIT B AND ADDITION OF BAT LOFT IN ROOF OF UNIT B***	Change of Use	SG	-492
TWC/2018/0524	Site of Croppings Farm, Stoney Hill, Lightmoor, Telford, Shropshire	Outline application for the demolition of existing farm buildings and the erection of 8no. dwellings with all matters reserved ***AMENDED DESCRIPTION AND AMENDED PLANS RECEIVED***	Demolition	SG	-753

Ward Total					-1694
Ironbridge Gorge					
TWC/2014/0113	Land off, Beech Road, Madeley, Telford, Shropshire	Outline planning application for part demolition of existing care village and nursery followed by construction of not more than 90no. open market residential dwellings, 3no registered social care bungalows, a new plant nursery and cafe, including the provision of means of access***Amended description, application form and plans received***	New Building	A1	2800
TWC/2021/0013	Site of 3 Southside, Church Hill, Ironbridge, Telford, TF8 7PZ	Conversion of former stabling undercroft/outbuilding to 1no. holiday let including the erection of a single storey side extension (Full Planning Application) ****AMENDED PLANS RECEIVED****	Change of Use	C1	24
TWC/2021/0013	Site of 3 Southside, Church Hill, Ironbridge, Telford, TF8 7PZ	Conversion of former stabling undercroft/outbuilding to 1no. holiday let including the erection of a single storey side extension (Full Planning Application) ****AMENDED PLANS RECEIVED****	Extension	C1	8
TWC/2020/0196	Land off, Beech Road, Madeley, Telford, TF7 5LE	Reserved matters application for the erection of 68no open market dwelling, 9no supported living dwellings, 3no registered social care bungalows and new plant nursery and cafe pursuant to TWC/2011/1102 including details for access, appearance, landscaping, layout and scale ****AMENDED DESCRIPTION/PLANS AND ADDITIONAL INFORMATION RECEIVED***	Demolition	C2	-1752
TWC/2019/0488	The Greenwood Centre, Station Road, Coalbrookdale, Telford, Shropshire, TF8 7DR	Erection of 5no. workstation buildings, extension to toilet block and ancillary buildings, installation of septic tank and extension to carpark	New Building	D2	180
TWC/2020/0196	Land off, Beech Road, Madeley, Telford, TF7 5LE	Reserved matters application for the erection of 68no open market dwelling, 9no supported living dwellings, 3no registered social care bungalows and new plant nursery and cafe pursuant to TWC/2011/1102 including details for access, appearance, landscaping, layout and scale ****AMENDED DESCRIPTION/PLANS AND ADDITIONAL INFORMATION RECEIVED***	Extension	SG	432
Ward Total					1692
Ketley and Overdale					
TWC/2019/0285	Offices, 36 Park Lane, Old Park, Telford TF3 4TE	Change of use from light industrial (B1) to retail (A1)	Change of Use	A1	146
TWC/2019/0386	The Wrens Nest, Wrens Nest Lane, Ketley, Telford, Shropshire, TF1 5HJ	Conversion of ground floor of existing public house (Use class A4) into 4no. residential units (use class C3) and associated works + retain PH accommodation as 1 flat (C3)***AMENDED PLANS RECEIVED***	Change of Use	A4	-279
TWC/2022/0038	Former Debenhams, 13 - 17 Sherwood Square, Telford Shopping Centre, Telford TF3 4DA	Application for a lawful development certificate for the proposed change of use from retail unit to trampoline park	Change of Use	E	9045
TWC/2020/0999	The Wrens Nest, Wrens Nest Lane, Ketley, Telford, Shropshire, TF1 5HJ	Units 1 and 2 - Change of use of part of public house (Sui generis) to 2 no. hot food takeaways (Sui generis). Units 3 and 4 - single storey extension for 2 no. units for Class E(b) (Unit 3) and Class E(a) (Unit 4). Proposed new vehicular access off Orchard Close, widening of existing access off Woodside Road and 1200mm high steel and timber fencing and 1800mm brick screen wall to boundary. *** Amended plan and Planning Statment ***Noise Impact Assessment***Amended Description***	Extension	E(a)	273

TWC/2022/0038	Former Debenhams, 13 - 17 Sherwood Square, Telford Shopping Centre, Telford TF3 4DA	Application for a lawful development certificate for the proposed change of use from retail unit to trampoline park	Change of Use	E(a)	-9045
TWC/2020/0999	The Wrens Nest, Wrens Nest Lane, Ketley, Telford, Shropshire, TF1 5HJ	Units 1 and 2 - Change of use of part of public house (Sui generis) to 2 no. hot food takeaways (Sui generis). Units 3 and 4 - single storey extension for 2 no. units for Class E(b) (Unit 3) and Class E(a) (Unit 4). Proposed new vehicular access off Orchard Close, widening of existing access off Woodside Road and 1200mm high steel and timber fencing and 1800mm brick screen wall to boundary. *** Amended plan and Planning Statment ***Noise Impact Assessment***Amended Description***	Extension	E(b)	69
Ward Total					209
Madeley and Sutton Hill					
TWC/2021/0781	Former Madeley Library, 1st & 2nd floor, 20-21 Russell Square, Madeley, Telford, TF7 5BB	Conversion of former library to 1no. Commercial Unit (Class E), 6no. residential apartments (Class C) and a second floor extension	Change of Use	D1	-813
TWC/2018/0663	Villa Court, Maddocks, Madeley, Telford, Shropshire TF7 5AR	Conversion of former clinic into a two bedroom dwelling-house including the replacement of steel single glazed windows	Change of Use	D1	-73
TWC/2021/0781	Former Madeley Library, 1st & 2nd floor, 20-21 Russell Square, Madeley, Telford, TF7 5BB	Conversion of former library to 1no. Commercial Unit (Class E), 6no. residential apartments (Class C) and a second floor extension	Change of Use	E	304
TWC/2021/0127	Land corner of Halesfield 18 & 20, Off Halesfield 20, Halesfield, Telford TF7 4QU	Reserved matters application for 21 industrial units (total of 4660sqm) with new site access, layout, car parking arrangement, appearance, landscaping, and scale in pursuant to outline permission	New Building	E	400
TWC/2021/1064	10 Park Street, Madeley, Telford, Shropshire, TF7 5LA	Conversion of existing retail unit into 2no. residential flats and alterations to the existing shop frontage ****AMENDED PLANS RECEIVED**** ****AMENDED DESCRIPTION****	Change of Use	E(a)	-92
TWC/2017/0450	Unit 3, Epic Park, Halesfield 6, Halesfield, Telford, Shropshire, TF7 4BF	Proposed continuation of existing recycling and waste transfer facility approved under TWC/2013/0275, construction of open-sided industrial building to cover recycling plant and extended hardstanding area with retaining wall and fencing ***Amended Description*** ***Amended Plans***	New Building	SG	443
TWC/2018/1030	Unit C, Halesfield 13, Halesfield, Telford, Shropshire, TF7 4QR	Provision of standby electricity balancing facility, comprising, battery-based electricity storage units and associated infrastructure	New Building	SG	600
Ward Total					769
Malinslee and Dawley Bank					
TWC/2020/0445	The International Centre, International Way, Telford Town Centre, Telford, Shropshire, TF3 4JH	Submission of Reserved Matters (proposed extensions to provide additional conference and event facilities (Class D1/D2)) pursuant to outline planning permission W2009/0914	Extension	E	2399
TWC/2020/0445	The International Centre, International Way, Telford Town Centre, Telford, Shropshire, TF3 4JH	Submission of Reserved Matters (proposed extensions to provide additional conference and event facilities (Class D1/D2)) pursuant to outline planning permission W2009/0914	Extension	E	3025
TWC/2020/0445	The International Centre, International Way, Telford Town Centre, Telford, Shropshire, TF3 4JH	Submission of Reserved Matters (proposed extensions to provide additional conference and event facilities (Class D1/D2)) pursuant to outline planning permission W2009/0914	Extension	E(g)(i)	1076
Ward Total					6500
Muxton					

TWC/2019/0930	Walkers Clock Service Station, School Road, Muxton, Telford, Shropshire. TF2 8JY	Demolition of existing shop and the erection of new sales building with associated site works	Demolition	A1	-146
TWC/2019/0930	Walkers Clock Service Station, School Road, Muxton, Telford, Shropshire. TF2 8JY	Demolition of existing shop and the erection of new sales building with associated site works	New Building	A1	248
TWC/2021/0046	Land North/East of Lodge Road Caravan Site, Donnington Wood Way, Donnington Wood, Telford TF2 7QD	Erection of 233 dwellings, 76 unit care home (Use Class C2) including Community Hub (Use Class E(b)), 20 unit supported accommodation, areas of public open space and LEAP, access, drainage and associated works	New Building	C2	8992
TWC/2021/0537	Rehovoth, 35A Wellington Road, Muxton, Telford, Shropshire, TF2 8NN	Change of use from a residential dwelling (Use Class C3) to a mixed use of a residential dwelling (Use Class C3) and a funeral home (Use Class F(c))	Change of Use	E	88
TWC/2021/0475	Land corner of Redhill Way/A5, Redhill, Telford, Shropshire	Reserved matters application pursuant to outline planning permission TWC/2019/0974 for the erection of 3no. retail units and 1no. public house including details for layout, scale, appearance, and landscaping	New Building	E(a)	471
TWC/2021/0046	Land North/East of Lodge Road Caravan Site, Donnington Wood Way, Donnington Wood, Telford TF2 7QD	Erection of 233 dwellings, 76 unit care home (Use Class C2) including Community Hub (Use Class E(b)), 20 unit supported accommodation, areas of public open space and LEAP, access, drainage and associated works	New Building	E(b)	315
TWC/2021/0730	Land adjacent Lodge Cottage, 1 Lodge Road, Donnington Wood, Telford. Shropshire	Erection of an agricultural building **Amended Plans Received**	New Building	SG	245
TWC/2021/0475	Land corner of Redhill Way/A5, Redhill, Telford, Shropshire	Reserved matters application pursuant to outline planning permission TWC/2019/0974 for the erection of 3no. retail units and 1no. public house including details for layout, scale, appearance, and landscaping	New Building	SG	585
TWC/2019/0930	Walkers Clock Service Station, School Road, Muxton, Telford, Shropshire. TF2 8JY	Demolition of existing shop and the erection of new sales building with associated site works	Extension	SG	60
Ward Total					10858
Newport North and West					
TWC/2018/0770	1 Lower Bar, Newport, Shropshire, TF10 7BE	Conversion of offices and outbuildings into 2no. dwelling houses including the erection of boundary treatments and associated landscaping (Full Planning Application)	Change of Use	A2	-99
TWC/2019/0134	Smallwood Lodge, Smallwood Lodge Tea Room, Upper Bar, Newport, Shropshire, TF10 7AP	Conversion of coach house to create a new seating area on the ground floor and first floor. Erection of a single storey rear extension and installation of 4no. rooflights and 1no. flue (Full planning application)	Extension	A3	95
TWC/2020/0911	Brookfield House, 2 Forton Road, Newport, Shropshire, TF10 7JL	Change of use from student accommodation (sui generis) to a residential care home (use class C2)	Change of Use	C2	522
TWC/2021/0528	Osprey Stores, 17 Gravelly Drive, Newport, Shropshire, TF10 7QS	Erection of a single storey rear extension for additional storage	Extension	E(a)	19
TWC/2020/0201	Nix Service Station, Forton Road, Newport, Shropshire, TF10 7JR	Proposed extension of retail unit to form two self contained retail units with formation of additional car parking	Extension	E(a)	50
TWC/2021/1100	Newport Rugby Union Football Club, Forton Road, Newport, Shropshire. TF10 8BU	Installation and siting of 1no. storage container***Amended Plans***	Mobile / Portacabin	F2(c)	29
TWC/2020/0911	Brookfield House, 2 Forton Road, Newport, Shropshire, TF10 7JL	Change of use from student accommodation (sui generis) to a residential care home (use class C2)	Change of Use	SG	-522
TWC/2017/0858	Lower Farm, Longford Road, Shropshire, TF10 8LP	Erection of barn to be used for the processing of Christmas trees grown on site *****FURTHER DOCUMENTATION RECEIVED*****	New Building	SG	336
Ward Total					430
Newport South and East					
TWC/2019/1022	Unit 2 Newport Retail Park, Audley Avenue, Newport, Shropshire, TF10 7GP	Change of use from retail unit (Use Class A1) to tanning salon (Use Class Sui Generis)	Change of Use	A1	-120

TWC/2011/0871	Land to the East and West of Station Road, Newport, Shropshire,	Erection for up to 350 no. dwellings (Use Class C3); extra care housing (Use Class C2); 4.5ha of employment land (Use Classes B1, B2 and B8); public open space and landscaping provision including sports pitch and landscaped park; demolition of existing industrial buildings; highway works and associated infrastructure development (Outline to include Access)***AMENDED DESCRIPTION, AMENDED PLANS AND SUPPORTING DOCUMENTS & REVISED ENVIRONMENTAL STATEMENT***	New Building	C2	3150
TWC/2014/0333	Land corner of, Stafford Road/A41, Newport, Shropshire	Erection of 111 no. residential dwellings and a 108 no. unit continuing care residential village with associated infrastructure	New Building	C2	2123
TWC/2011/0871	Land to the East and West of Station Road, Newport, Shropshire,	Erection for up to 350 no. dwellings (Use Class C3); extra care housing (Use Class C2); 4.5ha of employment land (Use Classes B1, B2 and B8); public open space and landscaping provision including sports pitch and landscaped park; demolition of existing industrial buildings; highway works and associated infrastructure development (Outline to include Access)***AMENDED DESCRIPTION, AMENDED PLANS AND SUPPORTING DOCUMENTS & REVISED ENVIRONMENTAL STATEMENT***	Demolition	E	-405
TWC/2011/0871	Land to the East and West of Station Road, Newport, Shropshire,	Erection for up to 350 no. dwellings (Use Class C3); extra care housing (Use Class C2); 4.5ha of employment land (Use Classes B1, B2 and B8); public open space and landscaping provision including sports pitch and landscaped park; demolition of existing industrial buildings; highway works and associated infrastructure development (Outline to include Access)***AMENDED DESCRIPTION, AMENDED PLANS AND SUPPORTING DOCUMENTS & REVISED ENVIRONMENTAL STATEMENT***	New Building	E	4000
TWC/2021/0412	Childrensworld, Mere Park Garden Centre, Stafford Road, Newport, Shropshire, TF10 9BY	Erection of a single storey extension to west elevation to create additional playrooms and facilities including the erection of a linking walkway following the demolition of 3no. outbuildings	Demolition	E	-147
TWC/2021/0412	Childrensworld, Mere Park Garden Centre, Stafford Road, Newport, Shropshire, TF10 9BY	Erection of a single storey extension to west elevation to create additional playrooms and facilities including the erection of a linking walkway following the demolition of 3no. outbuildings	Extension	E	160
TWC/2011/0871	Land to the East and West of Station Road, Newport, Shropshire,	Erection for up to 350 no. dwellings (Use Class C3); extra care housing (Use Class C2); 4.5ha of employment land (Use Classes B1, B2 and B8); public open space and landscaping provision including sports pitch and landscaped park; demolition of existing industrial buildings; highway works and associated infrastructure development (Outline to include Access)***AMENDED DESCRIPTION, AMENDED PLANS AND SUPPORTING DOCUMENTS & REVISED ENVIRONMENTAL STATEMENT***	Demolition	E(g)(i)	-1509

TWC/2011/0871	Land to the East and West of Station Road, Newport, Shropshire,	Erection for up to 350 no. dwellings (Use Class C3); extra care housing (Use Class C2); 4.5ha of employment land (Use Classes B1, B2 and B8); public open space and landscaping provision including sports pitch and landscaped park; demolition of existing industrial buildings; highway works and associated infrastructure development (Outline to include Access)***AMENDED DESCRIPTION, AMENDED PLANS AND SUPPORTING DOCUMENTS & REVISED ENVIRONMENTAL STATEMENT***	New Building	E(g)(i)	2000
TWC/2018/0568	Land South of A518/West of A41, Newport, Shropshire TF10	Hybrid planning application. Part A: (Phases 2&3) Outline planning application for the construction of an employment park comprising of up to 34,890 sq.m of business, general industrial, warehouse and distribution floorspace (Use Classes B1(b), B1(c), B2 and B8) with all matters reserved except for the means of access to the site. Part B: (Phase 1)Full planning application for the construction of 24no. business, general industrial and warehouse and distribution units (Use Classes B1(b), B1(c), B2 and B8) along with associated 2no. accesses and internal spine road, parking provision and landscaping (Phase 1) ***AMENDED PLANS RECEIVED***	New Building	Mix	31060
TWC/2011/0871	Land to the East and West of Station Road, Newport, Shropshire,	Erection for up to 350 no. dwellings (Use Class C3); extra care housing (Use Class C2); 4.5ha of employment land (Use Classes B1, B2 and B8); public open space and landscaping provision including sports pitch and landscaped park; demolition of existing industrial buildings; highway works and associated infrastructure development (Outline to include Access)***AMENDED DESCRIPTION, AMENDED PLANS AND SUPPORTING DOCUMENTS & REVISED ENVIRONMENTAL STATEMENT***	New Building	SG	130
TWC/2020/0082	Mere Park Garden Centre, Stafford Road, Newport, Shropshire, TF10 9BY	Installation of hand car wash including canopy and porta cabin	New Building	SG	52
TWC/2019/1022	Unit 2 Newport Retail Park, Audley Avenue, Newport, Shropshire, TF10 7GP	Change of use from retail unit (Use Class A1) to tanning salon (Use Class Sui Generis)	Change of Use	SG	120
Ward Total					40614
Oakengates and Ketley Bank					
TWC/2019/0891	30 Market Street, Oakengates, Telford, Shropshire, TF2 6ED	Partial change of use of ground and first floor of existing building (mixed use class) to 2no. studio apartments (use class C3) **AMENDED ELEVATIONS SUBMITTED**	Change of Use	A1	-36
TWC/2022/0041	1A & 1B, Maurice Lee Avenue, Oakengates, Telford, Shropshire, TF2 6HE	Change of use from Assisted Living Centre (Use Class C2) to House of Multiple Occupation (HMO) (Use Class Sui Generis) to include the creation of 2no. additional parking bays, new fencing and landscaping	Change of Use	C2	-205
TWC/2019/0862	The Willow Tree House, 2 Main Road, Ketley Bank, Telford, Shropshire. TF2 0DO	Change of use from residential dwelling (use class C3) to childrens residential home (use class C2)	Change of Use	C2	1340
TWC/2019/0806	Site of former Eden Complex, Telford Snooker Centre, Canongate, Oakengates, Telford, TF2 9BF	Demolition of existing snooker centre and erection of 70no. apartments with associated amenity space and parking ***AMENDED DESCRIPTION***	Demolition	D2	-1468
TWC/2021/0608	Site of The Croft Barn, Main Road, Ketley Bank, Telford TF2 oDQ	Conversion and first floor extension of existing barns to 1no dwelling and erection of detached garage ***Amended Plans and Description***	Change of Use	SG	-147

TWC/2022/0041	1A & 1B, Maurice Lee Avenue, Oakengates, Telford, Shropshire, TF2 6HE	Change of use from Assisted Living Centre (Use Class C2) to House of Multiple Occupation (HMO) (Use Class Sui Generis) to include the creation of 2no. additional parking bays, new fencing and landscaping	Change of Use	SG	205
Ward Total					-311
Park					
TWC/2020/0261	The Priory Nursing Home, Spring Hill, Wellington, Telford, Shropshire, TF1 3NA	Erection of a single storey front and side extension ****AMENDED DESCRIPTION****	Extension	C2	20
TWC/2021/0930	Site of Former The Wrekin Endeavour Centre, North Road, Wellington, Telford TF1 3ET	Erection of a 56no. unit Dementia Care Centre (consisting of 1 bed apartments) with associated parking, communal gardens and SUDs, following demolition of the existing buildings	New Building	C2	4202
TWC/2021/0930	Site of Former The Wrekin Endeavour Centre, North Road, Wellington, Telford TF1 3ET	Erection of a 56no. unit Dementia Care Centre (consisting of 1 bed apartments) with associated parking, communal gardens and SUDs, following demolition of the existing buildings	Demolition	F1(a)	-519
Ward Total					3703
Priorslee					
TWC/2014/0980	Land between, Castle Farm Way and A5, Priorslee, Telford, Shropshire	Outline application for residential development of up to 1100 dwellings, a commercial/employment centre (use classes B1a, A1, A2, A3, A4 and C3 uses) retention of existing farm shop, garden centre and play barn, erection of a primary school, local	New Building	C2	78000
TWC/2014/0980	Land between, Castle Farm Way and A5, Priorslee, Telford, Shropshire	Outline application for residential development of up to 1100 dwellings, a commercial/employment centre (use classes B1a, A1, A2, A3, A4 and C3 uses) retention of existing farm shop, garden centre and play barn, erection of a primary school, local	New Building	E(a)	8000
TWC/2014/0980	Land between, Castle Farm Way and A5, Priorslee, Telford, Shropshire	Outline application for residential development of up to 1100 dwellings, a commercial/employment centre (use classes B1a, A1, A2, A3, A4 and C3 uses) retention of existing farm shop, garden centre and play barn, erection of a primary school, local	New Building	E(g)(i)	12000
TWC/2021/0837	Redhill Primary School, Gatcombe Way, Priorslee, Telford, Shropshire, TF2 9GZ	Erection of a nursery and dedicated external teaching/play space including associated car park extension following the demolition of the existing pre-fabricated nursery and installation of new 3 metre high fencing around the existing MUGA. **Amended Description**	Demolition	F1(a)	-140
TWC/2021/0837	Redhill Primary School, Gatcombe Way, Priorslee, Telford, Shropshire, TF2 9GZ	Erection of a nursery and dedicated external teaching/play space including associated car park extension following the demolition of the existing pre-fabricated nursery and installation of new 3 metre high fencing around the existing MUGA. **Amended Description**	New Building	F1(a)	268
TWC/2021/0871	Holy Trinity Academy, Teece Drive, Priorslee, Telford, Shropshire, TF2 9SQ	Erection of a standalone three storey teaching block with changing block, 3G Pitch with 6no 15m floodlights, two single storey in-fill extensions to the existing school, fencing to grass pitches outside school boundary, a new 5v5 mini soccer pitch, and associated landscape works **Amended red line boundary, amended plans and supporting information**	New Building	F1(a)	2071

TWC/2021/0871	Holy Trinity Academy, Teece Drive, Priorslee, Telford, Shropshire, TF2 9SQ	Erection of a standalone three storey teaching block with changing block, 3G Pitch with 6no 15m floodlights, two single storey in-fill extensions to the existing school, fencing to grass pitches outside school boundary, a new 5v5 mini soccer pitch, and associated landscape works **Amended red line boundary, amended plans and supporting information**	New Building	F1(a)	91
TWC/2021/0871	Holy Trinity Academy, Teece Drive, Priorslee, Telford, Shropshire, TF2 9SQ	Erection of a standalone three storey teaching block with changing block, 3G Pitch with 6no 15m floodlights, two single storey in-fill extensions to the existing school, fencing to grass pitches outside school boundary, a new 5v5 mini soccer pitch, and associated landscape works **Amended red line boundary, amended plans and supporting information**	Extension	F1(a)	268
TWC/2014/0980	Land between, Castle Farm Way and A5, Priorslee, Telford, Shropshire	Outline application for residential development of up to 1100 dwellings, a commercial/employment centre (use classes B1a, A1, A2, A3, A4 and C3 uses) retention of existing farm shop, garden centre and play barn, erection of a primary school, local	New Building	F1(a)	19000
TWC/2014/0980	Land between, Castle Farm Way and A5, Priorslee, Telford, Shropshire	Outline application for residential development of up to 1100 dwellings, a commercial/employment centre (use classes B1a, A1, A2, A3, A4 and C3 uses) retention of existing farm shop, garden centre and play barn, erection of a primary school, local	Change of Use	SG	-617000
Ward Total					-497442
St. Georges					
TWC/2021/0722	Former Youth Centre, Gower Street, St Georges, Telford, TF2 9BE	Erection of 10no new dwellings and conversion of existing listed building to provide 3 new dwellings Use Class C3), community facility (Use Class F2 (b)) and parish council offices (Use Class E(g)) together with associated landscaping (Full Planning Application) *** AMENDED	Change of Use	E(g)(i)	300
TWC/2021/0722	Former Youth Centre, Gower Street, St Georges, Telford, TF2 9BE	Erection of 10no new dwellings and conversion of existing listed building to provide 3 new dwellings Use Class C3), community facility (Use Class F2 (b)) and parish council offices (Use Class E(g)) together with associated landscaping (Full Planning Application) *** AMENDED	Change of Use	F2	-510
Ward Total					-210
The Nedge					
TWC/2021/0486	Land North of The Randlay Farmhouse, Randlay Avenue, Randlav, Telford TF3 2LH	Erection of 14No 1 Bed assisted living units and associated parking	New Building	C2	957
TWC/2020/0267	Nationwide House, Stafford Park 7, Stafford Park, Telford, Shropshire, TF3 3BQ	Application for Prior Approval for the change of use from business (Use Class B1) to state-funded school or registered nursery	Change of Use	D1	339
TWC/2020/0295	Telford Central Fire Station, Stafford Park 1, Stafford Park, Telford, Shropshire, TF3 3BW	Modernisation of existing fire station and erection of 1no single storey and 1no two storey extensions. Installation of roof mounted photovoltaic array, reconfiguration of existing car park and bike store. Erection of 2no flag poles, 9no 6m external lighting columns and 7no 5m CCTV pole mounted installations and associated landscaping	Extension	D1	1502
TWC/2020/0751	Unit 1, Stafford Park 16, Stafford Park, Telford, Shropshire, TF3 3BB	Installation of a new mezzanine floor in order to extend the current office area into the main warehouse with associated external alterations, a new canopy and additional car parking/access	Mezzanine	E(g)(i)	300

TWC/2021/0417	Plot 5B, Telford 54 Business Park, Nedge Hill, Telford TF3 3AJ	Erection of 1no. two storey industrial unit (use class E(G)) and 1no. outbuilding with associated car park and service yard	New Building	E(g)(i)	264
TWC/2021/0404	Unit 5A, Telford 54 Business Park, Nedge Hill, Telford, Shropshire, TF3 3AL	Change of Use from B1(b&c) Business, B2 General Industrial and B8 Storage & Distribution to F1(a) Learning & Non-Residential Institutions	Change of Use	F1(a)	1628
Ward Total					4990
Wrockwardine					
TWC/2018/0182	The Huntsman Inn, Wellington Road, Little Wenlock, Telford, Shropshire. TF6 5BJ	Erection of a two storey side extension with storage basement	Extension	A3	84
TWC/2020/0043	Land north of Isombridge Farm House, Isombridge, Telford, Shropshire	Change of use of land to siting of 7no. Glamping pods, portaloos toilet and shower unit, storage shed and associated works	Change of Use	C1	40900
TWC/2021/0577	Land adjacent 39 Coalmoor Lane, Little Wenlock, Telford, TF6 5AS	Erection of 1no. single storey detached holiday let	New Building	C1	67
TWC/2021/1008	Maxwell Amenity Ltd, Units 1-7, Allscott, Telford, Shropshire, TF6 5DY	Change of use of unit 3 from storage and sales area to office and sales area and installation of a new shop front	Change of Use	E(g)(i)	244
TWC/2021/1146	Former British Sugar site, Allscott, Telford, Shropshire	Reserved matters application pursuant to outline planning permission TWC/2014/0113 (Erection of a mixed use development) for the erection of a primary school including details of appearance, landscaping, layout and scale	New Building	F1(a)	2000
TWC/2020/0782	Overley Hall School, Overley, Telford, Shropshire, TF6 5HE	Erection of 1no. detached multi-functional building and associated works	New Building	F1(a)	63
TWC/2021/0263	Former British Sugar site, Allscott, Telford, Shropshire	Reserved matters application pursuant to TWC/2014/0113 for the development of a new Sports and Social Club Pavilion, sports pitches/greens, car parking, cycle parking, landscaping and associated works including details for appearance, landscaping, layout and scale *** Amended site plan ***	New Building	F2(c)	547
TWC/2020/0043	Land north of Isombridge Farm House, Isombridge, Telford, Shropshire	Change of use of land to siting of 7no. Glamping pods, portaloos toilet and shower unit, storage shed and associated works	New Building	SG	15
TWC/2021/0167	Rodenhurst Hall, Rodenhurst Lane, Rodington Heath, Telford, Shropshire. SY4 4OU	Demolition of existing building and the erection of replacement mixed use building (Use class B2 & B8 use)	Demolition	SG	-424
TWC/2021/1164	Land adjacent Grove House, Grove Lane, Rodington, Telford, Shropshire SY4 4QP	Application to determine if prior approval is required for a proposed erection of a building for agricultural use	New Building	SG	150
TWC/2020/0043	Land north of Isombridge Farm House, Isombridge, Telford, Shropshire	Change of use of land to siting of 7no. Glamping pods, portaloos toilet and shower unit, storage shed and associated works	Change of Use	SG	-40900
TWC/2018/0891	Site of Marsh Farm, Marsh Green, Telford, Shropshire TF6 6NE	Conversion of redundant farm buildings to 2no. dwellings and ancillary domestic buildings *****AMENDED SITE PLAN SUBMITTED*****	Change of Use	SG	-200
TWC/2018/0683	Lydebrook Farm, 67 Coalmoor Road, Little Wenlock, Telford, Shropshire, TF6 5AS	Proposed dairy unit involving the construction of new buildings and facilities including: 2no. linked buildings to accommodate dairy cows; a building to accommodate dry cows; 5no. buildings to accommodate calves; 2no. buildings to	New Building	SG	13096
Ward Total					15642
Wrockwardine Ward					
TWC/2021/0583	The Huntsman Inn, Wellington Road, Little Wenlock, Telford, Shropshire. TF6 5BJ	Erection of a two storey side extension with storage basement	Extension	E(b)	84
Ward Total					84
Wrockwardine Wood and Trench					

TWC/2020/0383	Wrockwardine Wood Infant School, Church Road, Wrockwardine Wood, Telford, Shropshire, TF2 7AH	Erection of a timber structure to house an assessment nursery **AMENDED PLANS RECEIVED**	New Building	D1	145
---------------	---	--	--------------	----	-----

Ward Total					145
-------------------	--	--	--	--	------------

Borough Total					-414236
----------------------	--	--	--	--	----------------
