



Telford & Wrekin  
Co-operative Council

Protect, care and invest  
to create a better borough

Adult Social Care

# Strategic Plan

2024-2025

# Our vision

Working together with people, key partners and communities to enable people to live well and independently in Telford and Wrekin.



## Key highlights



Proportion of people using social care who receive self-directed support in the top quartile nationally.



Established the Adults at Risk Service (sustainability being reviewed).



My Options Shared Lives (Adult Placement) service has been rated as Outstanding by CQC, all other My Options services rated Good.



Increased financial investment in Adult Social Care



**LIVE WELL TELFORD**

Providing 24/7 information for residents on local community services.



Leading the integration of health and social care through the Telford & Wrekin Integrated Place Partnership.



Digital Excellence: Shared Care Record, Virtual House and Smart Hub initiatives.



Further developing our quality assurance mechanisms through collaborative working.



Strategic partnership boards are co-chaired by people with lived experience and associated strategies are co-produced. E.g. Autism Strategy 2023-2028

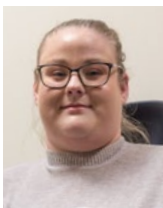
**ILC**

Co-production of the Independent Living Centre with Wellbeing Independent Partnership.



Continued commitment to practice and development of staff. E.g. social work progression framework.

## Co-production is at the heart of Adult Social Care



Sarah Roberts  
Co-Chair  
Making it Real  
Board



Telford  
Voices



Carer's  
Centre  
and CVS



Beverley Aston and  
Mark Austin  
Co-Chairs  
Ageing Well Partnership



Stacey  
Co-Chair  
Learning  
Disability  
Partnership



Cllr Kelly  
Middleton  
Chair  
Mental Health  
Partnership



Debbie Gibbon  
Chair  
Autism  
Partnership  
Board



Sarah Poole  
Adult Social Care  
Co-Production  
Lead

### Adult Social Care Values

- Co-production and collaboration
- Learn and develop
- Openness and honesty
- Celebrate good practice
- Ownership and accountability
- Fairness and respect
- Involvement
- Integration

# Our Adult Social Care Charter

The Adult Social Care Charter was co-produced with the Making it Real Board and reflects the principles that all staff in adult social care follow.



We will always promote independence.



We will listen with empathy and understanding.



Telford & Wrekin  
Co-operative Council



**making it real**

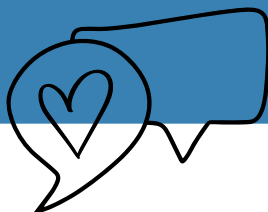


We will respect your decisions and be honest and open.

You will know who to contact and we will always get back to you.



Our conversations will be honest and personal to you we won't just tick boxes.



# Telford and Wrekin

## Our key facts and figures



Our net budget for Adult Social Care 2023/24 was

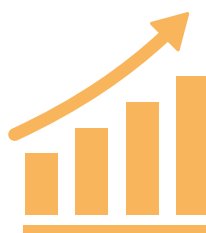
**£64.532 million**

Telford and Wrekin highlights, in 2022/23 it is estimated\*



**THERE ARE  
188,870**

people living in Telford and Wrekin; **33,500** over 65 years and **117,700** aged 18-64.



**+11.4%**

population increase. Fastest growing in West Midlands.

**+35.7%**

Increase in 65+ population.

England 20.1%. For 70-75 year olds there has been a 52% increase.

**31,000**

People living in the 10% most income deprived neighbourhoods nationally 17%, England 10%.

**16.6%**

Older people affected by income deprivation. England 13.2%.



**1 in 5**

People disabled 20.5%, England 17.7%.



**18,000**

People providing unpaid care 10.6%, England 8.9%.



**14,977**

contacts in a year. 8,151 for new people with no existing services



**4,176 2,158**

Assessments and prevention

People receiving long term services



**36**

Domicillary care providers



**41**

Care homes



**1,240**

Beds

# What we do

Adult Social Care is an integral part of Telford & Wrekin Council. Whilst the [Council Plan](#) sets out how the council will operate and what we will focus on delivering across all services, this document sets out what Adult Social Care will deliver to “protect, care and invest to create a better borough”.

## Working with people and partners, Adult Social Care supports:

- 1** People over the age of 18 to remain in their own home and as independent and safe as possible;
- 2** Carers to continue in their caring roles with advice, information and support;
- 3** People with a range of needs including physical disabilities, sight or hearing problems, learning disabilities or mental health illnesses;
- 4** Young people transitioning from Children’s Services into adulthood.

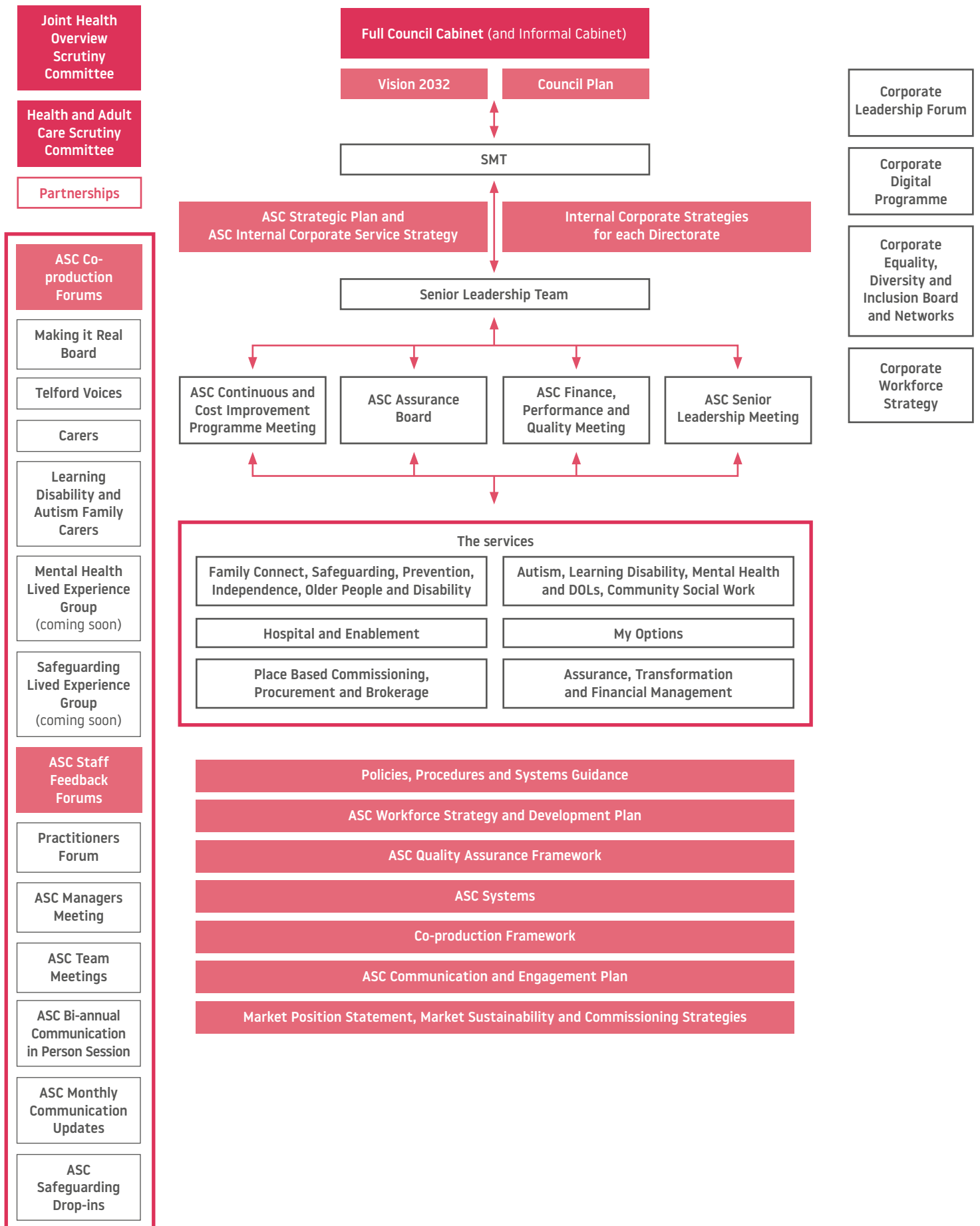
We strive to deliver a person-centred, integrated and collaborative service for Telford and Wrekin residents with care and support needs. Using a community asset and strengths-based approach, we work with people and those important to them to support people to live a fulfilling life, where they are able to realise their potential and contribute to their local community.

## Our priorities are to:

- 1** Provide early information and advice to enable people to help themselves.
- 2** Enable people to live independently in their own homes for longer.
- 3** Support people with care and support needs to live a life free from abuse.
- 4** Work in partnership with people, communities and partners.
- 5** Work with care providers to develop a quality sustainable care market.

# How we will deliver our priorities

Telford & Wrekin Council's Adult Social Care (ASC) Governance Arrangements for delivery of Care Act duties 2024/2025 (as at February 2024)



# Our leadership team



Amanda Benton  
Autism, Learning  
Disability, Mental Health  
and DOLs Community  
Social Work



David Sidaway  
Chief Executive



Catherine Holden  
Principal Social Worker



Simon Froud  
Director of Adult  
Social Care



Michael Bennett  
Hospital and Enablement



Sarah Bass  
Place Based  
Commissioning,  
Procurement and  
Brokerage



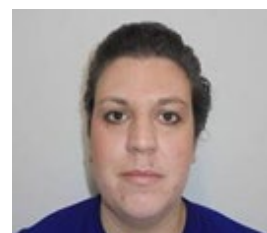
Clare Hall-Salter  
Assurance,  
Transformation and  
Financial Management



Councillor Paul Watling  
Cabinet Member

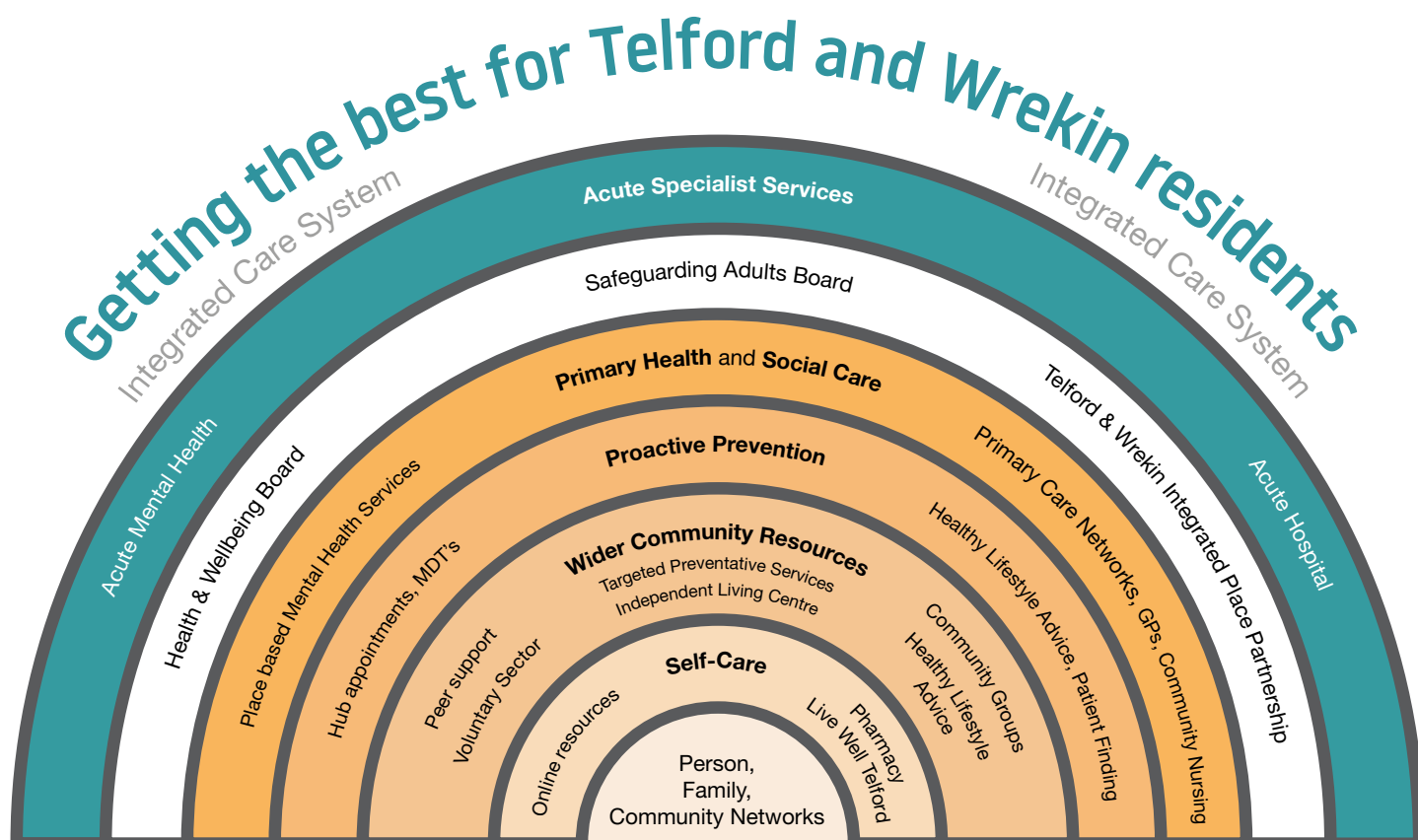


Emma Clutton  
Family Connect,  
Safeguarding,  
Prevention,  
Independence, Older  
People and Disability



Sara Podmore  
My Options

To support the delivery of our priorities we recognise the importance of partnership working:





# How will we know our work is making a difference?

**Corporate priority:**  
Every child, young person and adult lives well in their community



**Our priority – provide early information and advice to enable people to help themselves**

**Our key performance measures – we will have an impact by:**

% of people who use services who find it easy to find information about services (ASCOF and Oflog)

% of carers who find it easy to find information about services (ASCOF and Oflog)

Requests resulting in a service (Oflog)

**Our priority – enable people to live independently in their own homes for longer**

**Our key performance measures – we will have an impact by:**

Carer-reported quality of life (ASCOF/Oflog)

Adjusted Social care related quality of life - impact of Adult Social Care services – (ASCOF/Oflog)

% of older people (65 and over) who were still at home 91 days after discharge from hospital into reablement/rehabilitation services (ASCOF)

Outcome of short term services to maximise independence

% of adults with learning disabilities who live in their own home or with their family (ASCOF)

% of adults with learning disabilities in paid employment (ASCOF)

% of people using social care who receive Direct Payments (ASCOF)

**Our priority – support people with care and support needs to live a life free from abuse**

**Our key performance measures – we will have an impact by:**

% of people who use services who feel safe (ASCOF)

% of people who use services who say that those services have made them feel safe and secure (ASCOF)

% of section 42 enquiries undertaken where risk is removed/reduced at closure

Number of completed DoLS applications

**Our priority – work in partnerships with people, communities and partners**

**Our key performance measures – we will have an impact by:**

Long-term support needs met by admission to residential and nursing care homes, per 100,000 population (aged 18 to 64) (ASCOF)

Long-term support needs met by admission to residential and nursing care homes, per 100,000 population (aged 18 to 64) (ASCOF)

Overall satisfaction of people who use services with their care and support (ASCOF)

% of people who are discharged to normal place of residence (BCF)

Avoidable admission (BCF)

% complex discharges on pathways 1, 2 and 3 (BCF)

**Our priority – work with the care providers to develop a quality sustainable care market**

**Our key performance measures – we will have an impact by:**

% ASC Workforce turnover rate (all sectors)

% vacancy rate in direct care care roles in ASC

% of care homes rated good or outstanding by CQC

Unit costs of homecare and long-term residential care



# Adult Social Care

## Key Documents and Websites

Telford & Wrekin Council Vision and Council Plan

Adult Social Care Corporate Strategy

Adult Social Care  
Local Account

Health and Wellbeing Strategy  
2020-2025

Live Well Telford – online  
community directory

Telford & Wrekin Market Position  
Statement

Place Based Specialist and  
Supported Accommodation  
Strategy

Telford & Wrekin Safeguarding  
Partnership including the  
Safeguarding Adult Board

Adult Social Care Quality  
Assurance Framework

Place Based Learning Disability  
Strategy 2021-2025

Place Based Autism  
Strategy 2023-2027

Place Based Ageing Well  
Strategy 2023-2033

Shropshire, Telford & Wrekin  
Integrated Care Strategy  
and Joint Forward Plan 2023

Adult Social Care policies  
and procedures (TRiX)

Principal Social Worker  
Annual Report

My Options – in house provider

My Options CQC Report

Adult Social Care Continuous and  
Cost Improvement Plan

Telford & Wrekin Integrated  
Place Partnership Strategic Plan  
2022-2025

Telford & Wrekin Customer  
Strategy and Digital Strategy

Adult Social Care Co-production  
Framework

All-Age Carers Strategy  
2024-2027 – out to consultation  
in April 2024

Safer Telford and Wrekin  
Strategy 2021-2024

Adult Social Care workforce  
strategy – COMING SOON

Adult Social Care Prevention  
Strategy – COMING SOON

All Age Mental Health Strategy –  
COMING SOON

Working together with people, key partners  
and communities to enable people to live well  
and independently in Telford and Wrekin.