



Telford & Wrekin
Co-operative Council

Protect, care and invest
to create a better borough

TravelTelford



Active Travel Scheme

Oakengates to TFC – Phase 1

Consultation Document



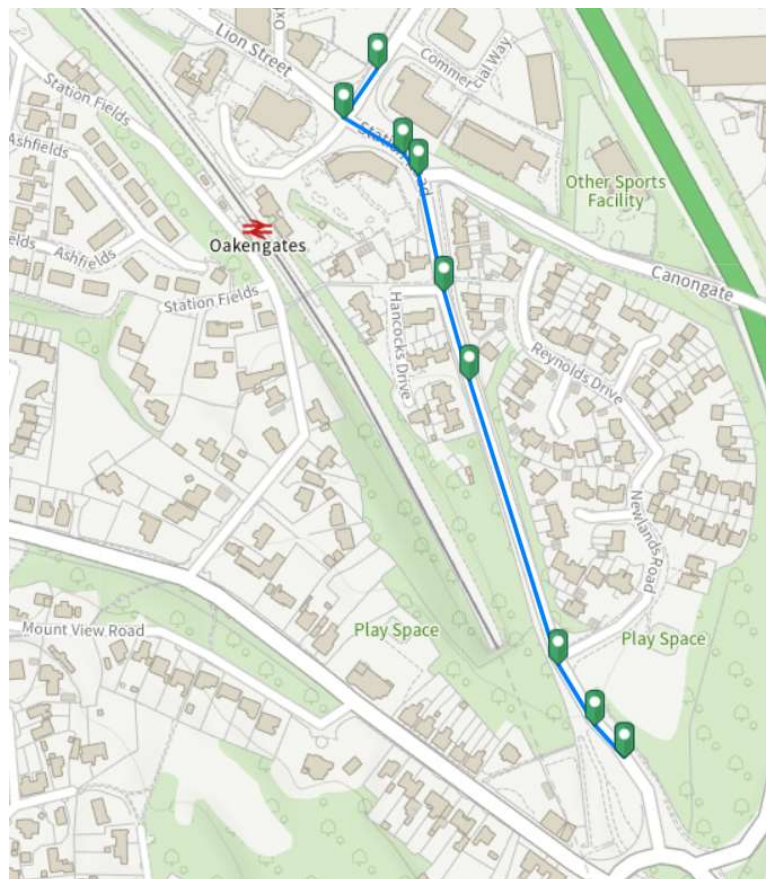
Background

As part of our ongoing plan to improve provisions for pedestrians and cyclists across the borough, we have reviewed the feasibility of improving provisions on Station Road, Oakengates. This scheme is part of the Local Cycling and Walking Infrastructure Plan and is being funded by Active Travel England.

The site, from Uxacona Way to the Greyhound Roundabout, has been identified as a suitable location for improved crossing points and the creation of shared routes to improve the safety of cyclists and vehicle users and to improve the connection with existing off highway route.

A review of Station Road, in its entirety (approximately 0.5km) has been undertaken to assist in the consideration of engineering measures that would best support a scheme to further improve active travel in the area. All items discussed in this note will be discussed between the Highways & Active Travel Team, Local Members and the Parish Council.

The review area of Station Road is shown in Figure 1.0



Map data – Corporate Map

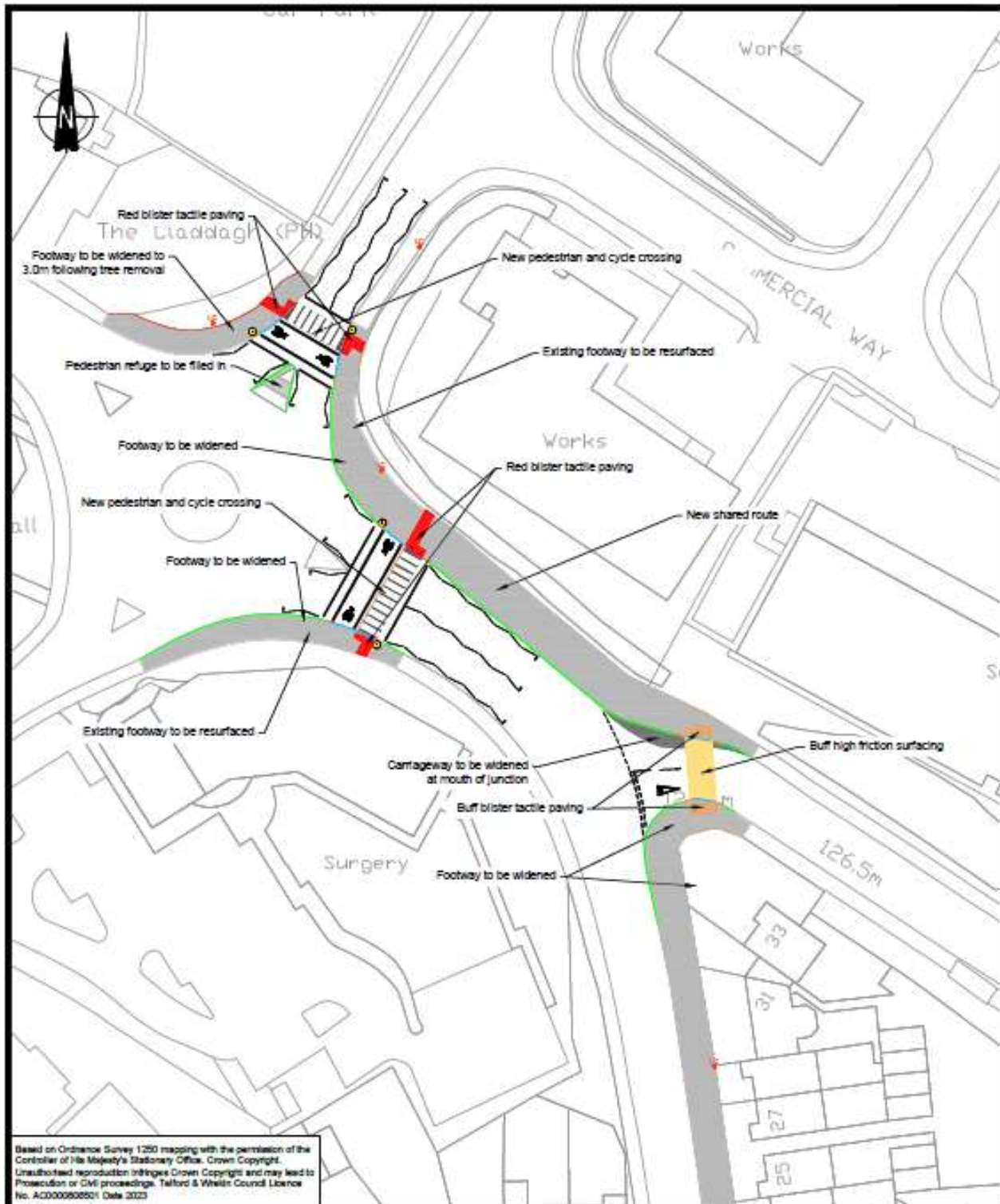
Figure 1.0 Review Area – Station Road (Highlighted Blue)

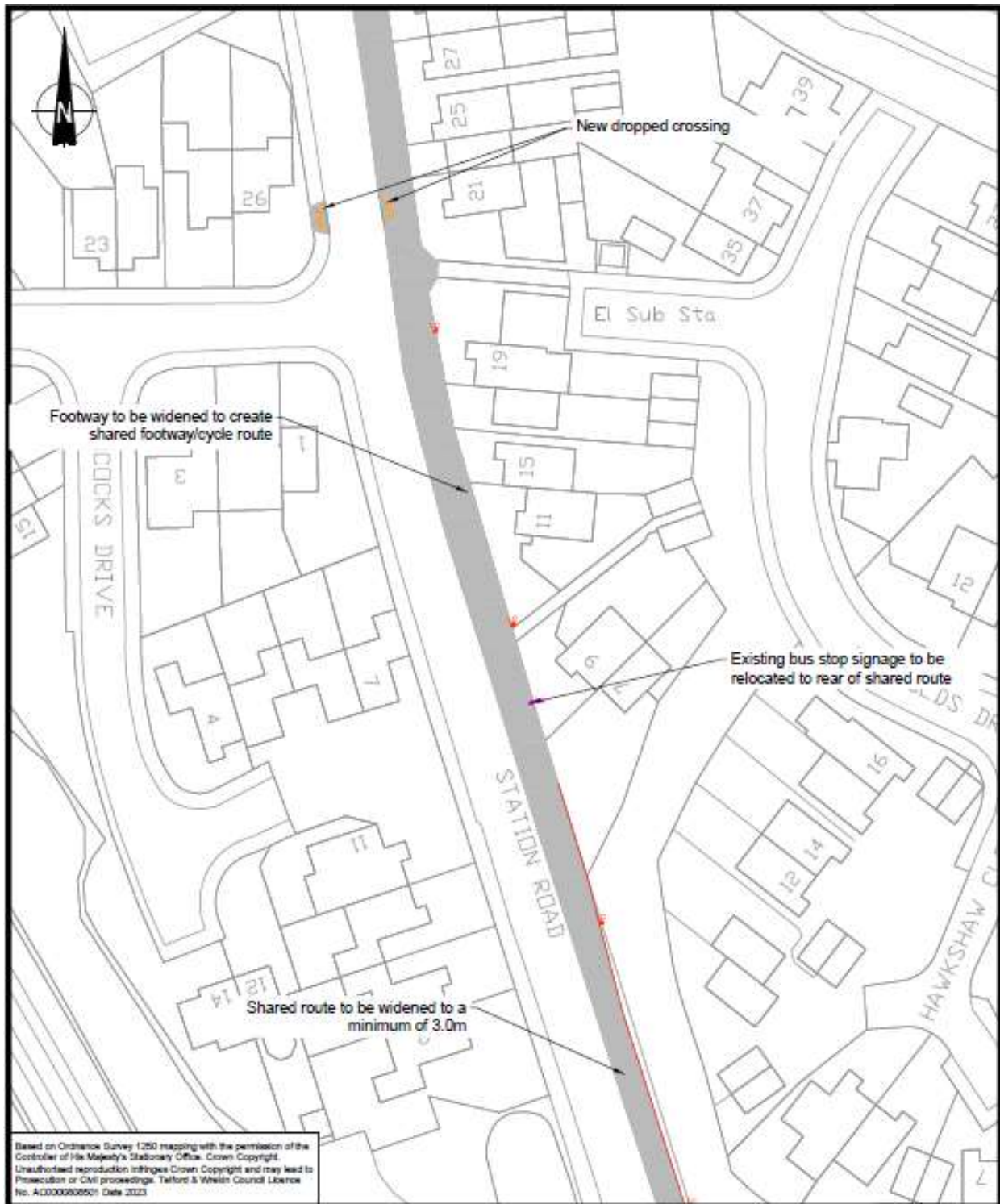
What changes are proposed?

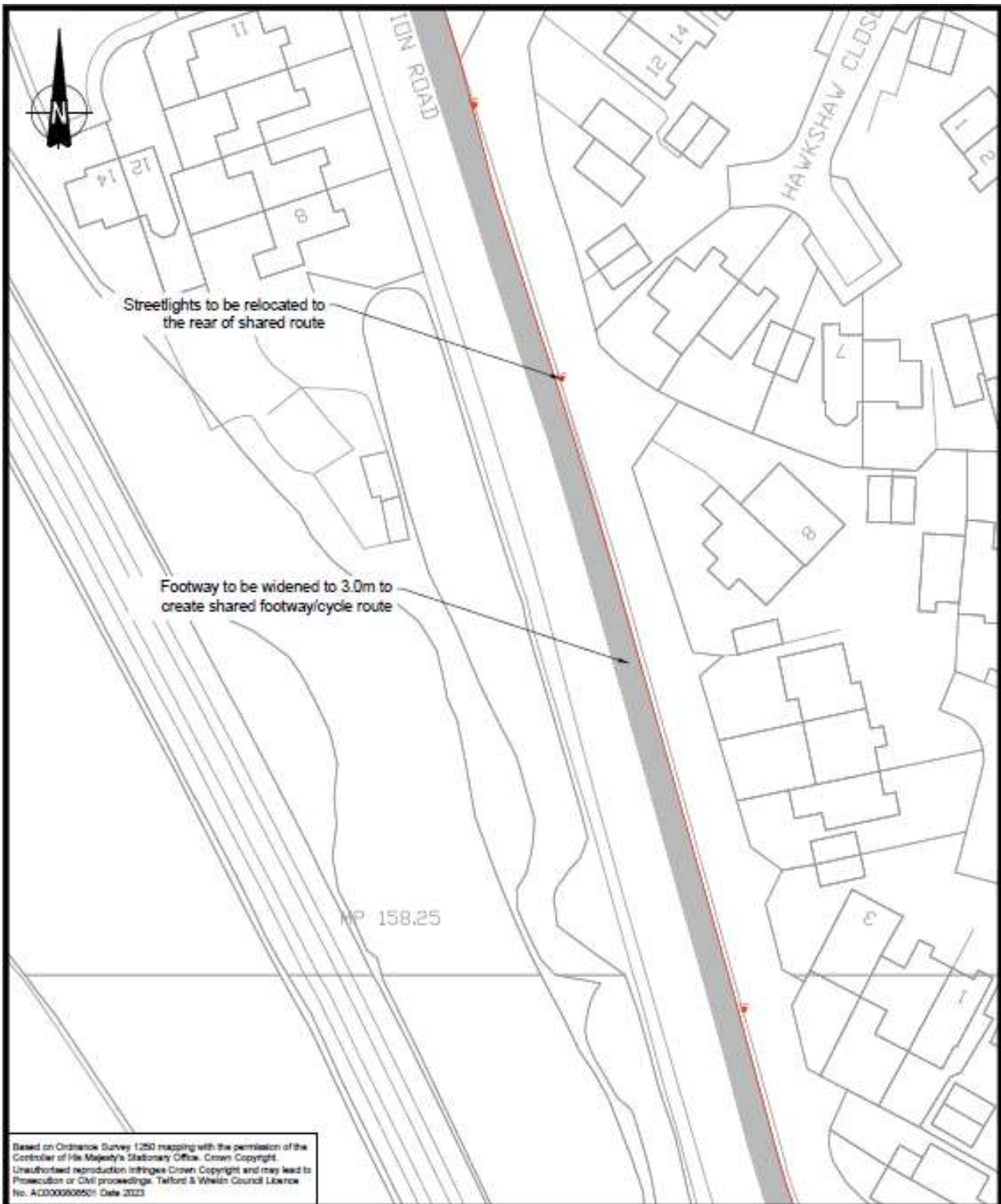
The feasibility of creating a dedicated shared route to segregate cycles from traffic on the highway has been investigated and the following design produced. To enable the creation of the shared route to the current guidelines and legislation, the footways along Station Road and Uxacona Way will be increased to 3.0m in width and 2 new crossing points created to facilitate safe crossing of cycles and pedestrians. The existing crossing point near Newlands Road will also be upgraded to conform to the latest standards. As part of the scheme, it is expected that up to 4 mature trees may need to be removed. To mitigate against this, provisions will be put in place to replant new trees elsewhere in the borough to offset the impact on the environment.

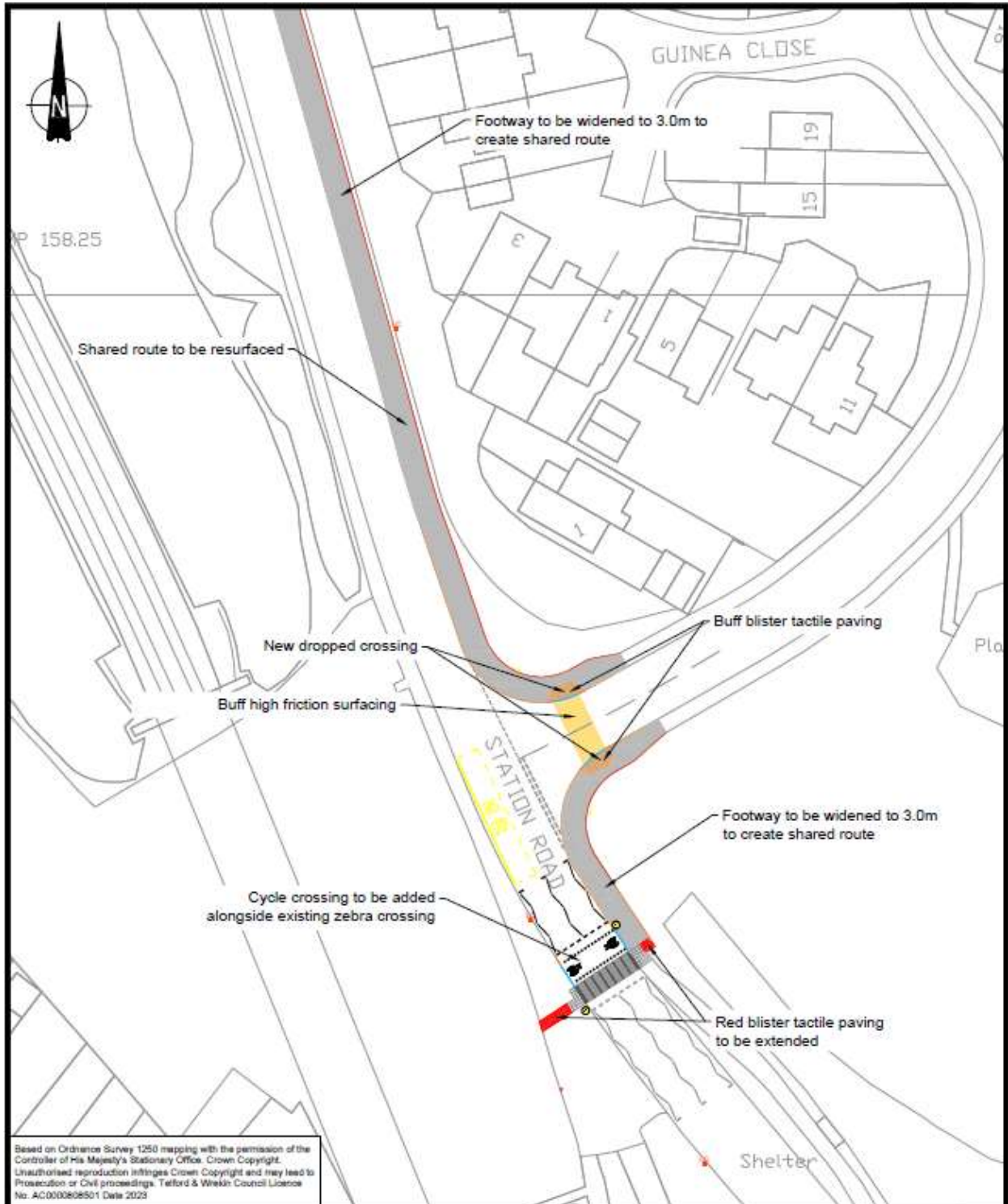
This scheme will deliver phase 1 of a proposed active travel route from Telford Central (TFC) train station to Oakengates (OKN) train station. It is hoped that the route will provide a safe link for both pedestrians and cycles and encourage the use of active travel and public transport in the area. This will help alleviate traffic in the historic market town of Oakengates and improve the safety of vehicle users, cyclists and pedestrians alike.

Scheme Proposal – Creation of a new shared route from Greyhound Roundabout to Uxacona Way









What will happen next?

In reviewing this document, the scheme is out for public consultation. This allows residents & businesses in the area to provide feedback and comments on the proposal before a final decision on whether to deliver the scheme is made. For the opportunity to provide your feedback, please visit: www.telford.gov.uk/ATF4 and complete the 'Have Your Say' section alternatively, please email projectsteam@telford.gov.uk.

The outcomes of discussions between the Highways & Active Travel Team, Local Members and the Parish Council will be reviewed in detail and a decision will be made based on how best to proceed. Should agreement be reached, the scheme will be taken forward.

It is considered that the public consultation stage will be a direct test of public support for the option presented before proceeding to detailed design. The outcome of the public consultation will be reviewed in detail and a decision will be made based on the content of the comments received.

Factors that will be taken into account will include, but not necessarily be limited to:

- Road safety
- Level of support
- Detail of any objections

As a local resident you may have a view as to the best layout that you would like to see however there are a number of hidden factors that influence this such as the location of hidden underground services for example gas mains, electricity and water pipes and who the land owner is, as not all the land falls under the councils ownership. Taking all this into account all of these factors would have been explored before finalising the design included above.

What will happen if the proposals are not supported?

The content of any objection will be considered and responded to accordingly. Should the proposals receive a high level of objection, it is unlikely that the proposal will be taken forward and an alternative option may be considered if possible. The format of any alternative proposal would be based on the content of any objection. Any alternative scheme would then undergo the same process (investigation works, detailed design, public consultation and contractor engagement) before a decision is made to deliver the scheme.