

THE GORGE 2001 CENSUS PROFILE

Key Facts:

	Borough	Parish
Population	158,325	2,462
Male Population	77,894	1,227
Female Population	80,428	1,235
Residents in Employment (16 to 74)	74,380	1,373
Economically Active Population (16 to 74)	78,500	1,432
Households	63,768	1,077
Average Household Size	2.5	2.3
Area (Ha)	29,030	574
Population Density	5.5	4.3

Population Structure:

Age	Male	Female	Total	Total %	Borough %
0-4	56	46	102	4.1	7.5
5-9	50	59	109	4.4	7.3
10-14	54	57	111	4.5	6.8
15	12	21	33	1.3	1.4
16-19	55	44	99	4.0	6.0
20-24	56	62	118	4.8	7.9
25-29	67	67	134	5.4	8.1
30-44	318	305	623	25.3	21.9
45-64	411	382	793	32.2	20.9
65-84	130	153	283	11.5	11.1
85 +	9	21	30	1.2	1.0

Ethnicity:

	Borough %	Parish Number	Parish %
Asian or Asian British	2.9	17	0.7
Black or Black British	0.6	6	0.2
Chinese	0.3	-	-
Mixed	1.1	27	1.1
Other Ethnic Group	0.3	-	-
White	94.8	2,421	98.0

Household Composition:

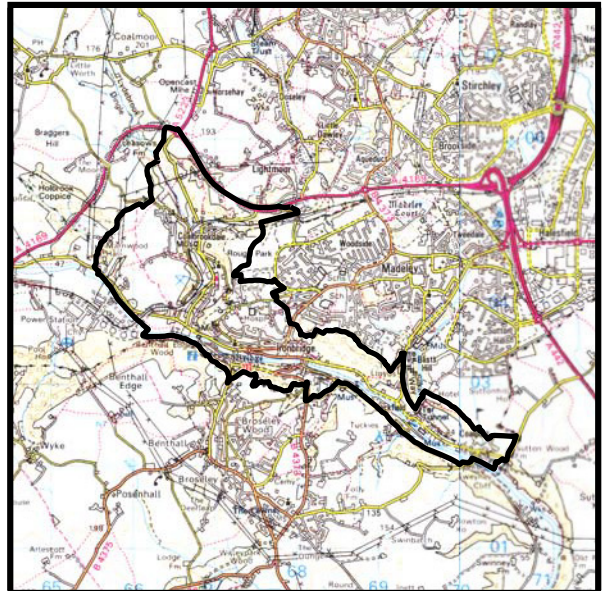
	Borough %	Parish Number	Parish %
Single Adult (non pensioner)	14.5	215	20.0
Single Pensioner	11.5	102	9.5
All Pensioner	7.5	80	7.4
Households with Dependent Children:			
- Lone Parents	7.9	36	3.3
- Married Couple	19.7	168	15.6
- Co-habiting Couple	4.2	39	3.6
- Other	2.1	15	1.4
Other Married Couple	21.1	257	23.9
Other Co-habiting Couple	5.4	91	8.4
Other Households	6.0	74	6.9

Tenure:

	Borough %	Parish Number	Parish %
Owner Occupied	68.8	833	77.7
Social Landlord	22.0	107	10.0
Private Landlord	5.9	104	9.7
Other	3.3	28	2.6

Households with Access to a Car or Van:

	Borough %	Parish Number	Parish %
None	22.4	123	11.5
One	45.5	444	41.4
Two or More	32.2	506	47.2



© Crown copyright. All rights reserved. Borough of Telford & Wrekin Licence No. 09071L, 2003.

Economic Activity:

	Borough %	Parish Number	Parish %
Full-time Employee	66.3	908	46.4
Part-time Employee	16.8	190	9.7
Self-employed	8.7	252	12.9
Un-employed	4.8	51	2.6
Full time Student	3.4	31	1.6
% of total 16 to 74 population	68.7	73.2	

Industry of Residents in Employment:

	Borough %	Parish Number	Parish %
Agriculture, Forestry & Fishing	1.4	21	1.5
Mining & Utilities	0.8	12	0.9
Construction	5.8	74	5.4
Manufacturing	25.4	234	17.0
Wholesale, Retail & Hotels	20.5	259	18.9
Transport & Communication	4.9	58	4.2
Finance & Business Services	14.0	228	16.6
Public Services	23.6	101	7.4
Other Services	3.6	386	28.1

Long-term Limiting Illness:

	Borough %	Parish Number	Parish %
Yes	18.0	381	15.5
No	82.0	2,079	84.5

Means of Travel to Work:

	Borough %	Parish Number	Parish %
Mainly Work at Home	7.8	177	12.8
Train	1.0	23	1.7
Bus	4.3	35	2.5
Motorcycle	1.0	14	1.0
Driving a Car or Van	64.4	959	69.2
Passenger in a Car or Van	9.6	75	5.4
Bicycle	2.5	20	1.4
On foot	8.3	71	5.1
Other	1.2	12	0.9

EXPLANATORY NOTES

The Census

The 2001 Census was carried out on the 29th April. As the response rate was 94.2% in the Borough, it was necessary for the Office for National Statistics (ONS) to impute missing responses. All data from the Census are therefore estimates and subject to standard error.

To protect confidentiality, ONS have rounded values of 2 or less to either 3 or 0. As this process produces potentially misleading results in areas with small population, in this document values of 3 or less have been suppressed. Therefore table column may not sum to the presented totals.

Ethnicity

The 2001 Census was the first Census to use the "mixed" ethnicity response.

Household Composition

Dependent Children:

A dependent child is a person in a household aged 0-15 years (whether or not in a family) or a person aged 16-18 who is a full-time student and in a family with parents

Other Households with Dependent Children:

Dependent children may not always reside with one or more of their parent. For example they could live with grandparents or other relatives, or in foster homes.

Other Households without Dependent Children:

Married and co-habiting couples with no children or with children over the age of 15 and who are not full-time students.

'Other' includes lone-parent households with non-dependent children, households occupied by only full-time students or with non-related adults.

Economic Activity

The economically active population is more usually defined as all people aged 16+ who are either full or part time employees, self employed, unemployed or a full time student who is working. To date, ONS have only published data for 16-74

year olds, excluding residents who are 75+ and economically active.

Unemployment Rate

The Census definition of unemployment is broader and therefore produces a higher unemployment rate than the measure normally used by ONS (residents claiming Job Seekers Allowance).

Long-term Limiting Illness

An illness, health problem or disability which limits daily activities or the work a person can do.

Further Information

More detailed analysis of the 2001 Census can be found on the Council's website at www.telford.gov.uk/factsandfigures

Disclaimer

Every effort has been made to ensure that the information contained in this document was correct at time of going to press. However, the Borough of Telford & Wrekin does not accept responsibility for any inaccuracies.

All Census material in this document is Crown Copyright. Before reuse or publication of the Census data contained in this document, a click-use or distribution licence must be obtained from:

Her Majesty's Stationery Office (HMSO)
The Licensing Division,
St Clements House,
2-16 Colegate, Norwich. NR 3 1BQ

Source: 2001 Census Key Statistics for Local Authorities and Standard Tables for Wards. (Crown copyright material is reproduced with the permission of the Controller of HMSO).

The maps in this document are reproduced from the Ordnance Survey mapping with the permission of the Controller of Her Majesty's Stationery Office © Crown copyright. Unauthorised reproduction infringes Crown copyright and may lead to prosecution or civil proceedings. Borough of Telford & Wrekin Licence No. 09071L, 2003.

Produced by

Policy and Performance Unit,
Community Governance,
Civic Offices, PO box 59,
Telford, TF3 4WZ
Telephone 01952 203014
Email: policy@telford.gov.uk

