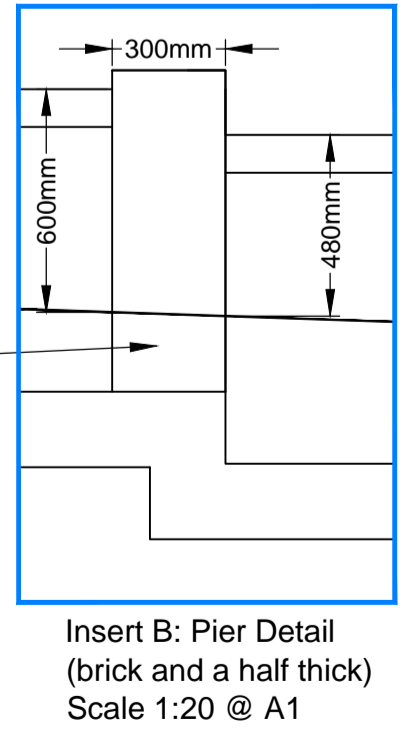
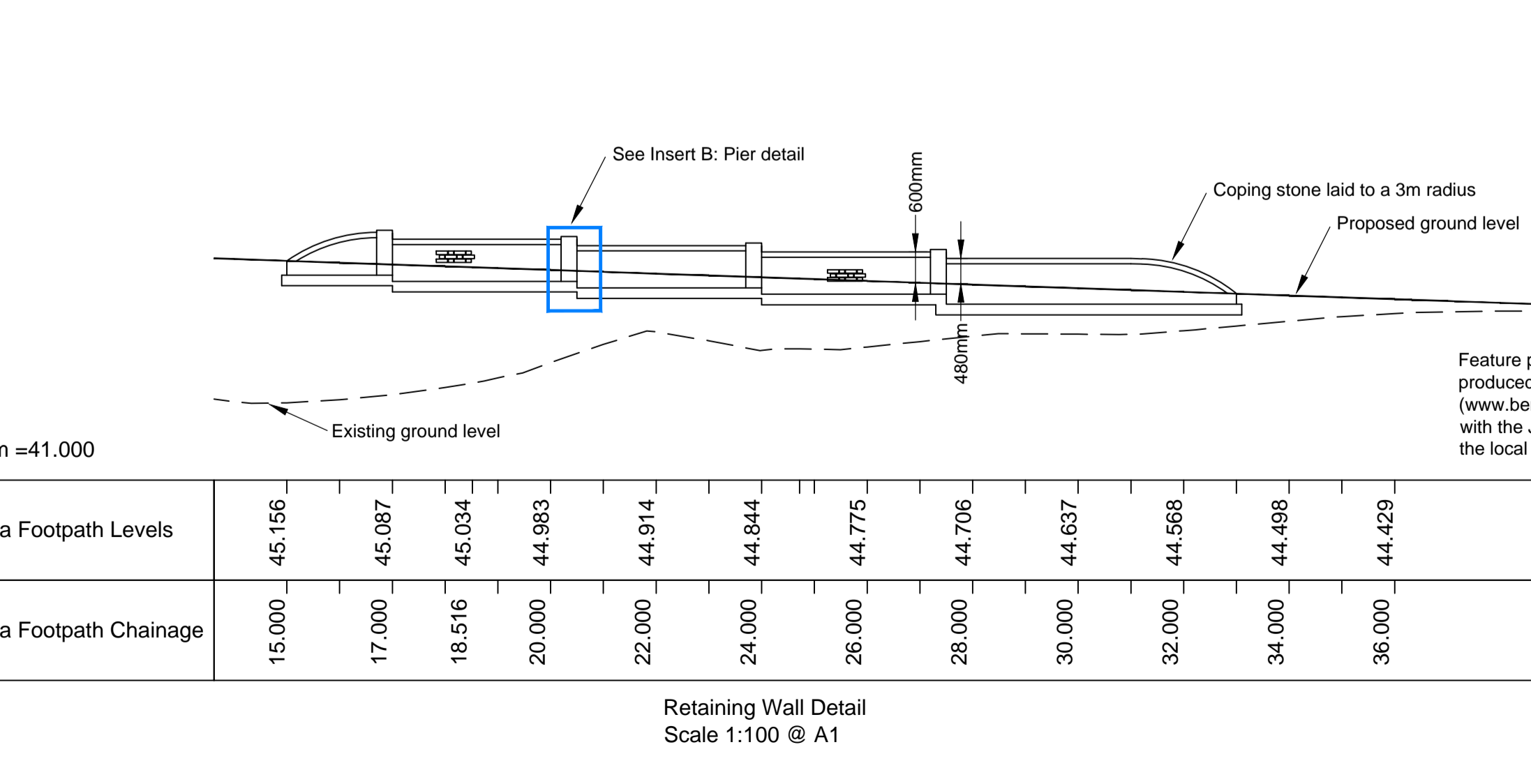
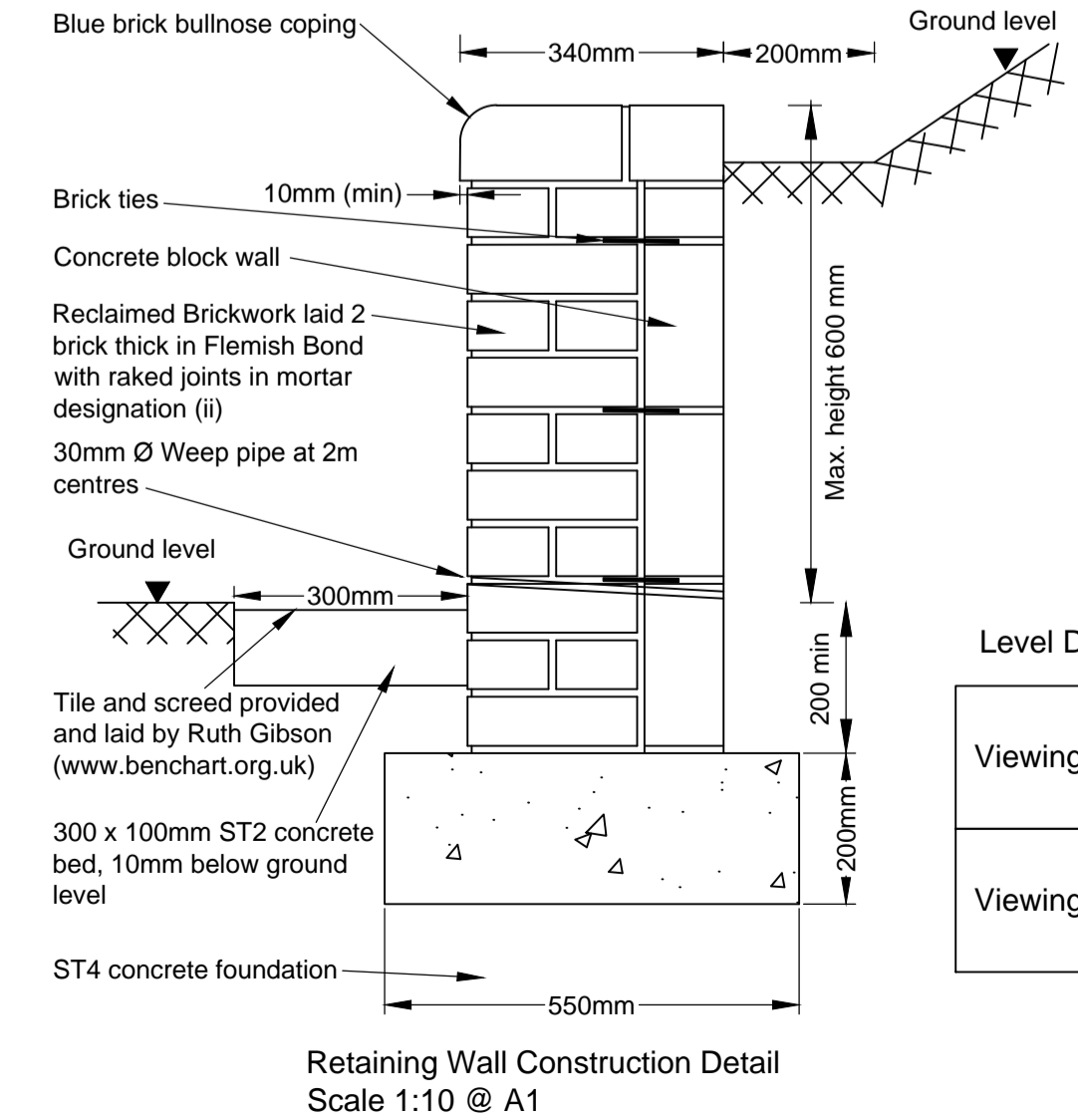


Based on Ordnance Survey 1250 mapping with the permission of the Controller of Her Majesty's Stationary Office. Crown Copyright.  
Unauthorised reproduction infringes Crown Copyright and may lead to Prosecution or Civil proceedings.  
Telford & Wrekin Council Licence No. 100019694 Date 2010  
Contour Information based on Lidar Data.

SAFETY, HEALTH AND ENVIRONMENTAL (SHE) INFORMATION	
In addition to the hazards/risks normally associated with the types of work detailed on this drawing, note the following:	
<b>CONSTRUCTION</b>	
<ul style="list-style-type: none"> <li>- Live overhead and underground utilities.</li> <li>- Steeply sloping ground - Slippery, machine stability.</li> <li>- Unstable ground in excavations.</li> <li>- Unidentified mine shafts.</li> <li>- Excessive silt carried by overland flow.</li> <li>- Contaminated mine water reaching the surface.</li> <li>- Confined spaces in deep chambers.</li> <li>- Flood flows in River Severn.</li> <li>- Wells Disease in River Severn.</li> </ul>	
<b>MAINTENANCE / CLEANING</b>	
<ul style="list-style-type: none"> <li>- Live overhead utilities.</li> <li>- Steeply sloping ground.</li> <li>- Confined spaces in deep chambers.</li> <li>- Deep water in ponds.</li> </ul>	
<b>ALTERATION / DEMOLITION</b>	
- As above	
It is assumed that all works will be carried out by a competent contractor working, where appropriate, to an approved method statement	

KEY	
	Area of full carriageway construction. See appendix 7/1 for material specification.
	Plane existing carriageway to depth of 40mm and replace with surface course only. See appendix 7/1 for material specification.
	Area of car park/access way full construction. See appendix 7/1 for material specification.
	Surface course overlay. See appendix 7/1 for material specification.
	Plane existing carriageway to a depth of 60mm and replace with binder course and surface course overlay. See appendix 7/1 for material specification.
	Ramp, see detail A - B1894500/700/02
	Extent of carriageway starter layer. 1000mm capping layer under carriageway construction.
	Carriageway Chainage
	Footway Chainage

For A2 / B1 step reference see drawings B1894500/700/01 & 02



Rev	Rev. Date	Purpose of revision	Drawn	Checked	Rev'd	Apprv'd
0	09/01/2014	Original	MH	MB	ND	DL

**JACOBS**  
Hollinswood House, Stafford Court, Stafford Park 1, Telford, Shropshire, TF3 3DD  
Tel: +44(0)1952 236 500 Fax: +44(0)1952 236 501  
www.jacobs.com

Client: **Telford & Wrekin COUNCIL**

Project: **JACKFIELD STABILISATION**

Drawing title: **HIGHWAY WORKS PAVEMENTS 1 OF 2**

Drawing status: **FOR CONSTRUCTION**

Scale: 1:500 @ A1 **DO NOT SCALE**

Jacobs No. B1894500

Client no.

Drawing number: **B1894500/C/700/01** Rev **0**

This drawing is not to be used in whole or part other than for the intended purpose and project as defined on this drawing. Refer to the contract for full terms and conditions.