



Project update

Works are progressing well on site. Work in front of the Boat Inn on Ferry Road is nearing completion as is the work around the Maws Craft Centre.

Ecological and archaeological works have been carried out on the river bank behind the Church Road cottages ahead of the rock revetment works and the mini piling. Mini piling has commenced along the river bank, this work is being completed by Kellers, the same contractor who did the main piling works. 8 mineshaft caps have been completed with 2 yet to be constructed.

Further archaeological finds have been unearthed during the excavations for the pond and the mineshaft caps. A tramway has been uncovered which linked the railway in the Severn Valley to the clay mine which served Benthall Tile Works. This tramway has been recorded and protected beneath the base of the pond. During the excavations for the mineshaft cap in this vicinity the remains of several mining buildings together with winding gear from the mineshaft were encountered, they have been recorded by the archaeologist and where possible preserved.

Fishing platforms have been created within the rock revetment along the river bank. The locations of the platforms have been agreed with the Environment Agency.

The 3 Lancashire boilers which were previously in the River Severn have been removed from the river under archaeological supervision. The boilers were part of a documented historical land stabilisation scheme. The boilers have been retained on site and will be incorporated into the landscaping.

The new water main has been laid, and the works to lay the new foul sewer are nearing completion. This work is being carried out by Severn Trent Water's subcontractors.

It is intended to have traffic using the new road alignment before the end of September, however it will be on a temporary road surface with final surfacing taking place at a later date. With this road in use the current temporary access road will be removed.

Who's out and about ?

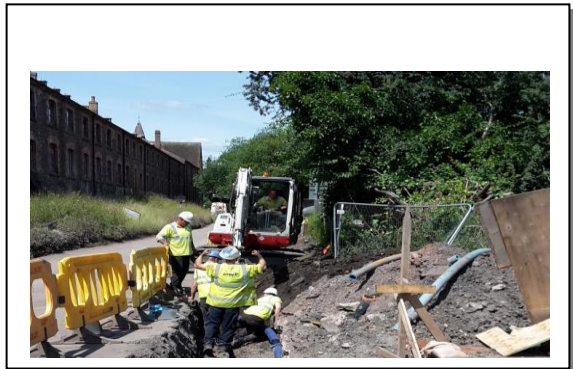
McPhillips: Earthworks, landscaping, highway construction, mini piling to river bank.

TWC & Jacobs: Supervising the works, monitoring instruments, topographical survey.



Date for your diary:

Stakeholder Group meeting, 15th Sept, 5pm
at Scarlett's Cafe, Maws Craft Centre.



What Next?

- Treatment of the adit entrance.
- Highway construction.
- Telford and Wrekin will be updating our webpage throughout the project.

The web address is:

www.telford.gov.uk/jackfieldstabilisationproject

Useful Contact Information:

TWC site team: Neal Rushton, Project Manager: 01952 384867; Colin Pitcher, Assistant Project Manager: 01952 384668; Debbie Goodale, Site Supervisor; Katherine Morris, Site Supervisor; **contractors site team:** Simon Hutchinson, Contracts Manager: 01952 670440; Mike Evans, Site Agent: 07753950160; **emergency contact details:** TWC: 08451 559955; McPhillips: 07718 242907.

Project Email: Jackfield.stabilisationproject@telford.gov.uk