

APLEY CASTLE WARD PROFILE 2013

OVERVIEW

Apley Castle is located in the centre of the Borough to the north east of the market town of Wellington.

The 2011 Census found a total population of 3,058 with 16.0% of residents from a BME background, higher than the Borough rate of 10.6%.

Apley Castle has low levels of deprivation with the north area of the ward in the 10% least deprived areas nationally.

The ward has a lower than average proportion of households claiming housing or Council Tax benefits and just 5.7% of children are eligible for free school meals compared to 21.3% Borough wide.

Some 8.3% of people aged under 20 in Apley Castle are living in poverty, considerably lower than Borough wide (24.8%) and some 7.0% of households are living in fuel poverty compare to 16.7% across the whole of Telford and Wrekin.

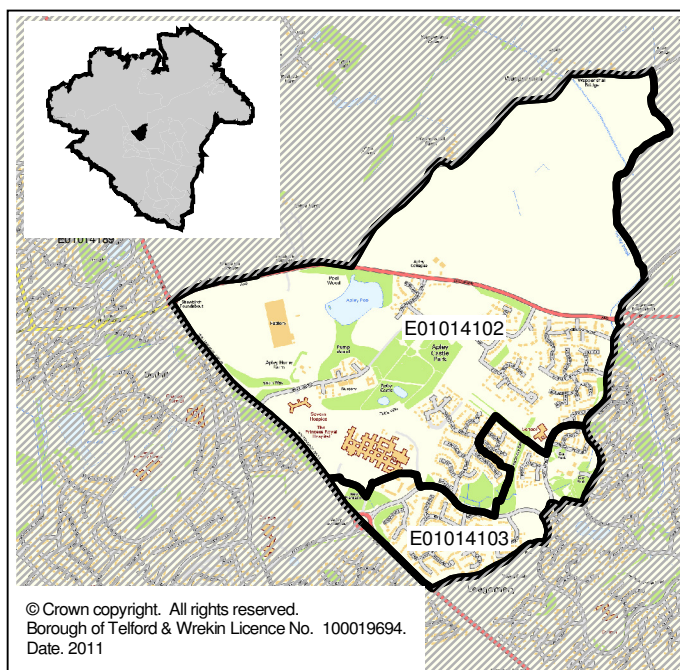
Just 1.0% of all young people across the Borough not in education, employment or training (NEET) live in Apley Castle. Rates of people claiming job seeks allowance (JSA) are lower than Borough wide for all breakdowns.

Educational attainment in Apley Castle is higher than the Borough as a whole across all key stages. Attainment at Key Stage 1 is in the top five for wards with 92.9% of pupils achieving a Level 2 or more in English and Maths (81.2% Borough wide).

Crime and antisocial behaviour rates are lower the Telford and Wrekin across all categories, with rates for Criminal Damage and ASB – Malicious Communication in the lowest five across the Borough.

Apley Castle has higher than average levels of owner occupiers than Borough wide and more than twice the proportion of detached houses as Telford and Wrekin as whole (77.5% compared to 30.8%).

Satisfaction with the local area is higher than Borough wide, but the proportion of people who feel the Council is making the area a better place to live is in the lowest five at 40% (49% Borough wide).



DEPRIVATION

The table below shows the levels of deprivation within the ward. Each ward is broken down into smaller areas called SOAs (see the map above) and each area is given a national deprivation rank using the following scale:

Scale	Most deprived nationally.....				least deprived nationally				
	10% most deprived	10-20% most deprived	20-30% most deprived	30-40% most deprived	40-50% most deprived	40-50% least deprived	30-40% least deprived	20-30% least deprived	10-20% least deprived	10% least deprived

SOA reference	Overall Deprivation rank	Income	Employment	Health deprivation & disability	Education, skills & training	Barriers to housing & services	Crime & disorder	Living environment	Income deprivation affecting children	Income deprivation affecting older people
E01014102 (North)	10% least deprived	10% least deprived	10-20% least deprived	10-20% least deprived	10-20% least deprived	30-40% most deprived	10-20% least deprived	10% least deprived	10-20% least deprived	10-20% least deprived
E01014103 (South)	10-20% least deprived	20-30% least deprived	10-20% least deprived	30-40% least deprived	20-30% least deprived	40-50% most deprived	40-50% least deprived	10-20% least deprived	10-20% least deprived	40-50% most deprived

APLEY CASTLE WARD PROFILE 2013

HOUSING & COUNCIL TAX BENEFIT CLAIMANTS

	Households claiming Housing/Council Tax Benefits as at 10/10/12			Children eligible for free school meals as at Jan 2012
	With dependent children under 20	Without dependent children under 20	All Households claiming Housing/Council Tax Benefits	
Apley Castle (number)	33	106	139	20
Apley Castle (%)	2.8%	9.1%	11.9%	5.7%
Borough (number)	7,216	13,206	20,422	3,785
Borough (%)	10.3%	18.8%	29.1%	21.3%
Rank (out of 33)	30	28	30	31

POVERTY

	No of children under 20 'in poverty' as at 31.08.10	Fuel Poverty households as at 2010
Apley Castle (number)	55	80
Apley Castle (%)	8.3%	7.0%
Borough (number)	9,745	11,279
Borough (%)	24.8%	16.7%
Rank (out of 33)	29	32

JOB SEEKERS ALLOWANCE AND NEETS

	Young people not in education, employment or training (NEETs) Aged 16-18	People claiming Job Seekers Allowance as at October 2012			
		Total JSA Claimant rate for 18-64	Total Youth JSA Claimant rate	Male youth JSA Claimant rate	Female youth JSA Claimant rate
Apley Castle (number)	5*	25*	15*	10*	5*
Apley Castle (%)	1.0% (of total NEETs)	1.0%	5.0%	3.3%	1.7%
Borough (number)	493	4,470	1,445	940	510
Borough (%)	n/a	3.6%	8.9%	5.8%	3.1%
Rank (out of 33)	21	32	21	22	23

* Numbers have been rounded to the nearest 5

Low numbers have been suppressed

EDUCATIONAL ATTAINMENT

	Early Years Foundation Stage	Key Stage 1	Key Stage 2	Key Stage 4
	Pupils achieving a good level of development	Pupils achieving Level 2 or more in English & Maths	Pupils achieving level 4 or more in English & Maths	Pupils achieving 5 GCSE A*-C including English & Maths
Apley Castle (%)	65.6%	92.9%	86.1%	65.5%
Borough (%)	55.1%	81.2%	79.3%	55.0%
Rank (out of 33)	8	5	12	8

APLEY CASTLE WARD PROFILE 2013

CRIME AND ANTI-SOCIAL BEHAVIOUR

	Apley Castle (per 1000 pop)	Rank (out of 33)	Borough (per 1000 pop)
Total Crime	#	26	61.0
Burglaries	#	27	8.7
Other Acquisitive Crime	#	26	16.6
Criminal Damage	#	32	6.0
Vehicle Crimes	#	26	10.4
Violent Crime	#	20	13.4
Other Crime	#	15	5.8
Total Anti-Social Behaviour (ASB)	#	25	64.0
ASB - Malicious communication	#	30	12.1
Other Anti-Social Behaviour	#	22	51.9

Numbers below the borough averages have been suppressed

HOUSING

Tenure

		Apley Castle 2011		Borough 2011
		Households	%	%
Owned	Owns outright	366	31.9%	27.2%
	Owns with a mortgage or loan	585	51.0%	36.5%
Shared ownership		2	0.2%	0.4%
Social rented	Rented from Council (Local Authority)	20	1.7%	8.1%
	Other social rented	38	3.3%	11.6%
Private rented	Private landlord or letting agency	114	9.9%	13.6%
	Employer of a household member	4	0.3%	0.2%
	Relative or friend of household member	9	0.8%	0.9%
	Other	0	0.0%	0.2%
Lives rent free		9	0.8%	1.2%
<i>All households</i>		<i>1,147</i>	<i>100.0%</i>	<i>100.0%</i>

Dwelling Type

		Apley Castle 2011		Borough 2011
		Households	%	%
House or bungalow	Detached	889	77.5%	30.8%
	Semi-detached	145	12.6%	36.7%
	Terrace (including end terrace)	85	7.4%	22.2%
Flat, maisonette or apartment	Purpose built	25	2.2%	8.6%
	Part of a converted or shared house (includes bed-sits)	1	0.1%	0.8%
	In a commercial building	1	0.1%	0.5%
Caravan or other mobile or temporary structure		1	0.1%	0.4%
In a shared dwelling		0	0.0%	0.0%
<i>All households</i>		<i>1,147</i>	<i>100.0%</i>	<i>100.0%</i>

APLEY CASTLE WARD PROFILE 2013

VIEWS ON THE BOROUGH AND WARD AS A PLACE TO LIVE

	Apley Castle		Borough
	%	Rank (out of 33)	%
Satisfied with Telford & Wrekin as a Place to Live	73%	24	77%
Satisfied with their local area	83%	12	76%
Feel the Council was making the area a better place to live	40%	29	49%
Satisfied with the way Telford & Wrekin run things	57%	24	61%
Agree that their area is a place where people from different backgrounds get on well together	72%	23	75%

POPULATION

Age Structure

	Apley Castle		Borough
	2011		2011
	People	%	%
0-4	161	5.3%	6.8%
5-9	208	6.8%	6.0%
10-15	239	7.8%	7.7%
16-24	334	10.9%	12.1%
25-44	781	25.5%	27.1%
45-64	975	31.9%	25.8%
65-84	332	10.9%	12.8%
85+	28	0.9%	1.6%
<i>All usual residents</i>	<i>3,058</i>	<i>100.0%</i>	<i>100.0%</i>

Ethnic background

	Apley Castle		Borough
	2011		2011
	People	%	%
White British	2,559	83.7%	89.5%
Other White	75	2.5%	3.2%
Mixed/multiple	46	1.5%	1.8%
Asian/Asian British	349	11.4%	4.2%
Black/African/Caribbean /Black British	26	0.9%	1.1%
Other ethnic group	3	0.1%	0.3%
All BME	499	16.0%	10.6%
<i>All usual residents</i>	<i>3,058</i>	<i>100.0%</i>	<i>100.0%</i>

Religion

	Apley Castle		Borough
	2011		2011
	People	%	%
Buddhist	18	0.6%	0.2%
Christian	1,903	62.2%	61.7%
Hindu	50	1.6%	0.5%
Jewish	0	0.0%	0.0%
Muslim	109	3.6%	1.8%
Sikh	104	3.4%	1.3%
Other religion	8	0.3%	0.4%
No religion	679	22.2%	27.4%
Religion not stated	187	6.1%	6.6%
Total with religion	2,192	71.7%	66.1%
<i>All usual residents</i>	<i>3,058</i>	<i>100.0%</i>	<i>100.0%</i>

Telford & Wrekin Council, while believing the information in this publication to be correct, does not guarantee its accuracy nor does the Council accept any liability for any direct or indirect loss or damage or other consequences, however arising, from the use of such information supplied. For our full Terms and Disclaimer, please see <http://www.telford.gov.uk/terms>.

For pages 2-4, red and green shading has been used to highlight those areas ranked the best 5 (green) and worst 5 (red) in the Borough.

Full notes detailing the sources of all data and other relevant metadata can be found at www.telford.gov.uk/factsandfigures or by contacting us on 01952 380131.