

# ARLESTON WARD PROFILE 2013

## OVERVIEW

Arleston ward is located in the centre of the Borough to the south of the market town of Wellington.

The 2011 Census found a total ward population of 3,635, with some 23.2% of these residents from a BME background, more than twice the Borough rate of 10.6%.

Deprivation within the ward is fairly high with the north west area in the 10-20% most deprived nationally and the south east in the 30-40% most deprived nationally. Deprivation is highest in the education skills and training domain.

The proportion of households claiming housing or Council Tax benefits is higher than Borough wide, particularly for households with dependent children under 20 (16.2% compared to 10.3%). Almost a third (30.6%) of children in the ward are eligible for free school meals, the fifth highest ward rate in the Borough, higher than the average of 21.3%.

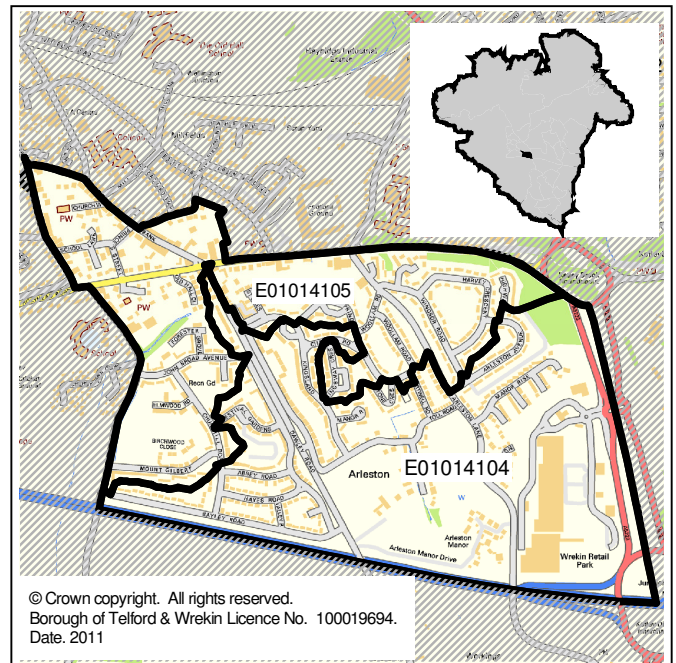
A third (33.5%) of children in Arleston are living in poverty compared to 24.8% Borough wide and almost a quarter (22.3%) of households are living in fuel poverty, the third highest rate in the Borough (average 16.7%).

Arleston accounts for 3.9% of all young people not in education training or employment across the Borough. Rates of people claiming job seekers allowance are similar to Borough wide.

Educational attainment in Arleston is lower than across the Borough as a whole with attainment at Early Years Foundation Stage (22.6%) and Key Stage 1 (71.4%) amongst the lowest in the Borough.

Rates of crime and antisocial behaviour (ASB) in Arleston are higher the Borough wide across all categories except for ASB – Malicious communication.

Satisfaction levels in the ward are lower than Borough wide, in particular just over half of residents (53%) agree that their area is a place where people from different backgrounds get on well together compared to 75% across Telford and Wrekin.



## DEPRIVATION

The table below shows the levels of deprivation within the ward. Each ward is broken down into smaller areas called SOAs (see the map above) and each area is given a national deprivation rank using the following scale:

Scale	Most deprived nationally.....					.....least deprived nationally				
	10% most deprived	10-20% most deprived	20-30% most deprived	30-40% most deprived	40-50% most deprived	40-50% least deprived	30-40% least deprived	20-30% least deprived	10-20% least deprived	10% least deprived

SOA reference	Overall Deprivation rank	Income	Employment	Health deprivation & disability	Education, skills & training	Barriers to housing & services	Crime & disorder	Living environment	Income deprivation affecting children	Income deprivation affecting older people
E01014104 (south east)	30-40% most deprived	20-30% most deprived	30-40% most deprived	30-40% most deprived	10-20% most deprived	40-50% most deprived	40-50 most deprived	20-30% least deprived	20-30% most deprived	40-50% most deprived
E01014105 (north west)	10-20% most deprived	10-20% most deprived	10-20% most deprived	20-30% most deprived	10% most deprived	40-50% most deprived	10-20% most deprived	40-50% least deprived	10-20% most deprived	10-20% most deprived

# ARLESTON WARD PROFILE 2013

## HOUSING & COUNCIL TAX BENEFIT CLAIMANTS

	Households claiming Housing/Council Tax Benefits as at 10/10/12			Children eligible for free school meals as at Jan 2012
	With dependent children under 20	Without dependent children under 20	All Households claiming Housing/Council Tax Benefits	
Arleston (number)	223	271	494	151
Arleston (%)	16.2%	19.7%	35.8%	30.6%
Borough (number)	7,216	13,206	20,422	3,785
Borough (%)	10.3%	18.8%	29.1%	21.3%
Rank (out of 33)	5	15	8	5

## POVERTY

	No of children under 20 'in poverty' as at 31.08.10	Fuel Poverty households as at 2010
Arleston (number )	325	313
Arleston (%)	33.5%	22.3%
Borough (number)	9,745	11,279
Borough (%)	24.8%	16.7%
Rank (out of 33)	7	3

## JOB SEEKERS ALLOWANCE AND NEETS

	Young people not in education, employment or training (NEETs) Aged 16-18	People claiming Job Seekers Allowance as at October 2012			
		Total JSA Claimant rate for 18-64	Total Youth JSA Claimant rate	Male youth JSA Claimant rate	Female youth JSA Claimant rate
Arleston (number)	20*	110*	35*	20*	15*
Arleston (%)	3.9% (of total NEETs)	4.4%	8.8%	5.0%	3.8%
Borough (number)	493	4,470	1,445	940	510
Borough (%)	n/a	3.6%	8.9%	5.8%	3.1%
Rank (out of 33)	12	8	16	17	11

\* Numbers have been rounded to the nearest 5

# Low numbers have been suppressed

## EDUCATIONAL ATTAINMENT

	Early Years Foundation Stage Pupils achieving a good level of development	Key Stage 1 Pupils achieving Level 2 or more in English & Maths	Key Stage 2 Pupils achieving level 4 or more in English & Maths	Key Stage 4 Pupils achieving 5 GCSE A*-C including English & Maths
Arleston (%)	22.6%	71.4%	75.0%	39.5%
Borough (%)	55.1%	81.2%	79.3%	55.0%
Rank (out of 33)	32	30	26	28

# ARLESTON WARD PROFILE 2013

## CRIME AND ANTI-SOCIAL BEHAVIOUR

	Arleston (per 1000 pop)	Rank (out of 33)	Borough (per 1000 pop)
Total Crime	121.2	3	61.0
Burglaries	10.0	9	8.7
Other Acquisitive Crime	54.8	3	16.6
Criminal Damage	7.6	7	6.0
Vehicle Crimes	17.3	3	10.4
Violent Crime	21.2	4	13.4
Other Crime	10.3	4	5.8
Total Anti-Social Behaviour (ASB)	121.2	2	64.0
ASB - Malicious communication	#	14	12.1
Other Anti-Social Behaviour	110.6	2	51.9

# Numbers below the borough averages have been suppressed

## HOUSING

### Tenure

		Arleston 2011		Borough 2011
		Households	%	%
Owned	Owns outright	294	22.0%	27.2%
	Owns with a mortgage or loan	450	33.6%	36.5%
Shared ownership		4	0.3%	0.4%
Social rented	Rented from Council (Local Authority)	187	14.0%	8.1%
	Other social rented	181	13.5%	11.6%
Private rented	Private landlord or letting agency	183	13.7%	13.6%
	Employer of a household member	2	0.1%	0.2%
	Relative or friend of household member	11	0.9%	0.9%
	Other	3	0.2%	0.2%
Lives rent free		24	1.8%	1.2%
<i>All households</i>		<i>1,339</i>	<i>100.0%</i>	<i>100.0%</i>

### Dwelling Type

		Arleston 2011		Borough 2011
		Households	%	%
House or bungalow	Detached	197	14.7%	30.8%
	Semi-detached	789	58.9%	36.7%
	Terrace (including end terrace)	264	19.7%	22.2%
Flat, maisonette or apartment	Purpose built	65	4.9%	8.6%
	Part of a converted or shared house (includes bed-sits)	18	1.3%	0.8%
	In a commercial building	6	0.4%	0.5%
Caravan or other mobile or temporary structure		0	0.0%	0.4%
In a shared dwelling		0	0.0%	0.0%
<i>All households</i>		<i>1,339</i>	<i>100.0%</i>	<i>100.0%</i>

# ARLESTON WARD PROFILE 2013

## VIEWS ON THE BOROUGH AND WARD AS A PLACE TO LIVE

	Arleston		Borough
	%	Rank (out of 33)	%
Satisfied with Telford & Wrekin as a Place to Live	63%	31	77%
Satisfied with their local area	56%	32	76%
Feel the Council was making the area a better place to live	37%	30	49%
Satisfied with the way Telford & Wrekin run things	58%	22	61%
Agree that their area is a place where people from different backgrounds get on well together	54%	32	75%

## POPULATION

### Age Structure

	Arleston 2011		Borough 2011
	People	%	%
0-4	305	8.4%	6.8%
5-9	285	7.8%	6.0%
10-15	302	8.3%	7.7%
16-24	444	12.2%	12.1%
25-44	1,066	29.3%	27.1%
45-64	798	22.0%	25.8%
65-84	374	10.3%	12.8%
85+	61	1.7%	1.6%
<i>All usual residents</i>	<i>3,635</i>	<i>100.0%</i>	<i>100.0%</i>

### Ethnic background

	Arleston 2011		Borough 2011
	People	%	%
White British	2,792	76.8%	89.5%
Other White	178	4.9%	3.2%
Mixed/multiple	125	3.4%	1.8%
Asian/Asian British	447	12.3%	4.2%
Black/African/Caribbean /Black British	58	1.6%	1.1%
Other ethnic group	35	1.0%	0.3%
<b>All BME</b>	<b>843</b>	<b>23.2%</b>	<b>10.6%</b>
<i>All usual residents</i>	<i>3,635</i>	<i>100.0%</i>	<i>100.0%</i>

### Religion

	Arleston 2011		Borough 2011
	People	%	%
Buddhist	9	0.2%	0.2%
Christian	2,019	55.5%	61.7%
Hindu	6	0.2%	0.5%
Jewish	0	0.0%	0.0%
Muslim	427	11.7%	1.8%
Sikh	39	1.1%	1.3%
Other religion	6	0.2%	0.4%
No religion	914	25.1%	27.4%
Religion not stated	215	5.9%	6.6%
<b>Total with religion</b>	<b>2,506</b>	<b>68.9%</b>	<b>66.1%</b>
<i>All usual residents</i>	<i>3,635</i>	<i>100.0%</i>	<i>100.0%</i>

Telford & Wrekin Council, while believing the information in this publication to be correct, does not guarantee its accuracy nor does the Council accept any liability for any direct or indirect loss or damage or other consequences, however arising, from the use of such information supplied. For our full Terms and Disclaimer, please see <http://www.telford.gov.uk/terms>.

For pages 2-4, red and green shading has been used to highlight those areas ranked the best 5 (green) and worst 5 (red) in the Borough.

Full notes detailing the sources of all data and other relevant metadata can be found at [www.telford.gov.uk/factsandfigures](http://www.telford.gov.uk/factsandfigures) or by contacting us on 01952 380131.