

COLLEGE WARD PROFILE 2013

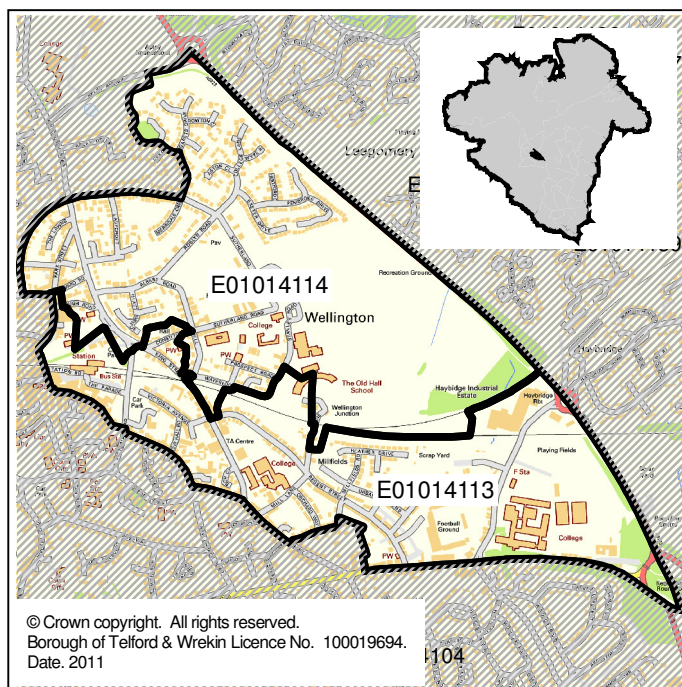
OVERVIEW

College ward is located in the centre of the Borough, part of the market town of Wellington.

The 2011 Census found a total population of 3,091 with almost a third (32.6%) of these residents from a BME background, three times the Borough rate of 10.6%.

College is divided in deprivation levels with the north of the ward ranking in the 30-40% **least** deprived of areas and the south ranking in the 10% **most** deprived nationally.

The proportion of households claiming housing or Council Tax benefit in College is higher than Borough wide (32.6% compared to 29.1%), particularly for households without dependent children (24.3% compared to 18.8%).



A fifth (20.1%) of children in the ward are living in poverty, slightly lower than the 24.8% Borough wide.

The proportion of people claiming job seekers allowance (JSA) is higher than the Borough rate across all categories, with the total JSA claimant rate of 5.2% the fifth highest ward rate in the Borough (3.6% Borough wide).

Educational attainment in College for Early Year Foundation Stage is the lowest in the Borough with just 14.3% of pupils achieving a good level of development (55.1% Borough wide). Attainment at Key Stage 2 is also the lowest in the Borough with 52.9% of pupils achieving a level 4 or more in English and Maths (79.3% Borough wide).

Rates for crime and antisocial behaviour (ASB) in the ward are higher than Borough wide across all categories, and are in the five highest across the Borough for all categories excepting burglaries and ASB malicious communication.

Satisfaction levels in College are similar to those across the Borough for all measures.

DEPRIVATION

The table below shows the levels of deprivation within the ward. Each ward is broken down into smaller areas called SOAs (see the map above) and each area is given a national deprivation rank using the following scale:

Scale	Most deprived nationally.....				least deprived nationally				
	10% most deprived	10-20% most deprived	20-30% most deprived	30-40% most deprived	40-50% most deprived	40-50% least deprived	30-40% least deprived	20-30% least deprived	10-20% least deprived	10% least deprived

SOA reference	Overall Deprivation rank	Income	Employment	Health deprivation & disability	Education, skills & training	Barriers to housing & services	Crime & disorder	Living environment	Income deprivation affecting children	Income deprivation affecting older people
E01014113 South	10% most deprived	10% most deprived	10% most deprived	10-20% most deprived	10% most deprived	40-50% most deprived	10% most deprived	40-50% most deprived	10-20% most deprived	10-20% most deprived
E01014114 North	30-40% least deprived	30-40% least deprived	40-50% least deprived	30-40% least deprived	20-30% least deprived	20-30% least deprived	20-30% most deprived	30-40% least deprived	10-20% least deprived	40-50% least deprived

COLLEGE WARD PROFILE 2013

HOUSING & COUNCIL TAX BENEFIT CLAIMANTS

	Households claiming Housing/Council Tax Benefits as at 10/10/12			Children eligible for free school meals as at Jan 2012
	With dependent children under 20	Without dependent children under 20	All Households claiming Housing/Council Tax Benefits	
College (number)	120	343	463	75
College (%)	8.5%	24.2%	32.6%	20.7%
Borough (number)	7,216	13,206	20,422	3,785
Borough (%)	10.3%	18.8%	29.1%	21.3%
Rank (out of 33)	15	6	13	11

POVERTY

	No of children under 20 'in poverty' as at 31.08.10	Fuel Poverty households as at 2010
College (number)	150	257
College (%)	20.9%	18.7%
Borough (number)	9,745	11,279
Borough (%)	24.8%	16.7%
Rank (out of 33)	15	13

JOB SEEKERS ALLOWANCE AND NEETS

	Young people not in education, employment or training (NEETs) Aged 16-18	People claiming Job Seekers Allowance as at October 2012			
		Total JSA Claimant rate for 18-64	Total Youth JSA Claimant rate	Male youth JSA Claimant rate	Female youth JSA Claimant rate
College (number)	9	120*	30*	20*	10*
College (%)	1.8% (of total NEETs)	5.2%	10.0%	6.7%	3.3%
Borough (number)	493	4,470	1,445	940	510
Borough (%)	n/a	3.6%	8.9%	5.8%	3.1%
Rank (out of 33)	17	5	12	10	13

* Numbers have been rounded to the nearest 5

Low numbers have been suppressed

EDUCATIONAL ATTAINMENT

	Early Years Foundation Stage Pupils achieving a good level of development	Key Stage 1 Pupils achieving Level 2 or more in English & Maths	Key Stage 2 Pupils achieving level 4 or more in English & Maths	Key Stage 4 Pupils achieving 5 GCSE A*-C including English & Maths
College (%)	14.3%	85.4%	52.9%	55.2%
Borough (%)	55.1%	81.2%	79.3%	55.0%
Rank (out of 33)	33	15	33	17

COLLEGE WARD PROFILE 2013

CRIME AND ANTI-SOCIAL BEHAVIOUR

	College (per 1000 pop)	Rank (out of 33)	Borough (per 1000 pop)
Total Crime	107.2	4	61.0
Burglaries	10.0	9	8.7
Other Acquisitive Crime	28.1	5	16.6
Criminal Damage	10.3	3	6.0
Vehicle Crimes	18.4	2	10.4
Violent Crime	31.3	2	13.4
Other Crime	9.1	5	5.8
Total Anti-Social Behaviour (ASB)	106.9	3	64.0
ASB - Malicious communication	15.6	6	12.1
Other Anti-Social Behaviour	91.3	3	51.9

Numbers below the borough averages have been suppressed

HOUSING

Tenure

		College 2011		Borough 2011
		Households	%	%
Owned	Owns outright	385	29.8%	27.2%
	Owns with a mortgage or loan	330	25.5%	36.5%
Shared ownership		2	0.2%	0.4%
Social rented	Rented from Council (Local Authority)	129	10.0%	8.1%
	Other social rented	161	12.5%	11.6%
Private rented	Private landlord or letting agency	216	16.7%	13.6%
	Employer of a household member	19	1.5%	0.2%
	Relative or friend of household member	15	1.2%	0.9%
	Other	5	0.4%	0.2%
Lives rent free		30	2.3%	1.2%
<i>All households</i>		<i>1,292</i>	<i>100.0%</i>	<i>100.0%</i>

Dwelling Type

		College 2011		Borough 2011
		Households	%	%
House or bungalow	Detached	355	27.5%	30.8%
	Semi-detached	366	28.3%	36.7%
	Terrace (including end terrace)	245	19.0%	22.2%
Flat, maisonette or apartment	Purpose built	261	20.2%	8.6%
	Part of a converted or shared house (includes bed-sits)	28	2.2%	0.8%
	In a commercial building	31	2.4%	0.5%
Caravan or other mobile or temporary structure		1	0.1%	0.4%
In a shared dwelling		5	0.4%	0.0%
<i>All households</i>		<i>1,292</i>	<i>100.0%</i>	<i>100.0%</i>

COLLEGE WARD PROFILE 2013

VIEWS ON THE BOROUGH AND WARD AS A PLACE TO LIVE

	College		Borough
	%	Rank (out of 33)	%
Satisfied with Telford & Wrekin as a Place to Live	77%	19	77%
Satisfied with their local area	71%	26	76%
Feel the Council was making the area a better place to live	44%	25	49%
Satisfied with the way Telford & Wrekin run things	66%	7	61%
Agree that their area is a place where people from different backgrounds get on well together	78%	14	75%

POPULATION

Age Structure

	College 2011		Borough 2011
	People	%	%
0-4	172	5.6%	6.8%
5-9	181	5.9%	6.0%
10-15	231	7.5%	7.7%
16-24	423	13.7%	12.1%
25-44	762	24.7%	27.1%
45-64	829	26.8%	25.8%
65-84	430	13.9%	12.8%
85+	63	2.0%	1.6%
<i>All usual residents</i>	<i>3,091</i>	<i>100.0%</i>	<i>100.0%</i>

Ethnic background

	College 2011		Borough 2011
	People	%	%
White British	2,082	67.4%	89.5%
Other White	197	6.4%	3.2%
Mixed/multiple	62	2.0%	1.8%
Asian/Asian British	664	21.5%	4.2%
Black/African/Caribbean /Black British	69	2.2%	1.1%
Other ethnic group	17	0.5%	0.3%
All BME	1,009	32.6%	10.6%
<i>All usual residents</i>	<i>3,091</i>	<i>100.0%</i>	<i>100.0%</i>

Religion

	College 2011		Borough 2011
	People	%	%
Buddhist	13	0.4%	0.2%
Christian	1,606	52.0%	61.7%
Hindu	15	0.5%	0.5%
Jewish	3	0.1%	0.0%
Muslim	567	18.3%	1.8%
Sikh	43	1.4%	1.3%
Other religion	9	0.3%	0.4%
No religion	628	20.3%	27.4%
Religion not stated	207	6.7%	6.6%
Total with religion	2,246	73.0%	66.1%
<i>All usual residents</i>	<i>3,091</i>	<i>100.0%</i>	<i>100.0%</i>

Telford & Wrekin Council, while believing the information in this publication to be correct, does not guarantee its accuracy nor does the Council accept any liability for any direct or indirect loss or damage or other consequences, however arising, from the use of such information supplied. For our full Terms and Disclaimer, please see <http://www.telford.gov.uk/terms>.

For pages 2-4, red and green shading has been used to highlight those areas ranked the best 5 (green) and worst 5 (red) in the Borough.

Full notes detailing the sources of all data and other relevant metadata can be found at www.telford.gov.uk/factsandfigures or by contacting us on 01952 380131.