

# KETLEY AND OAKENGATES WARD PROFILE 2013

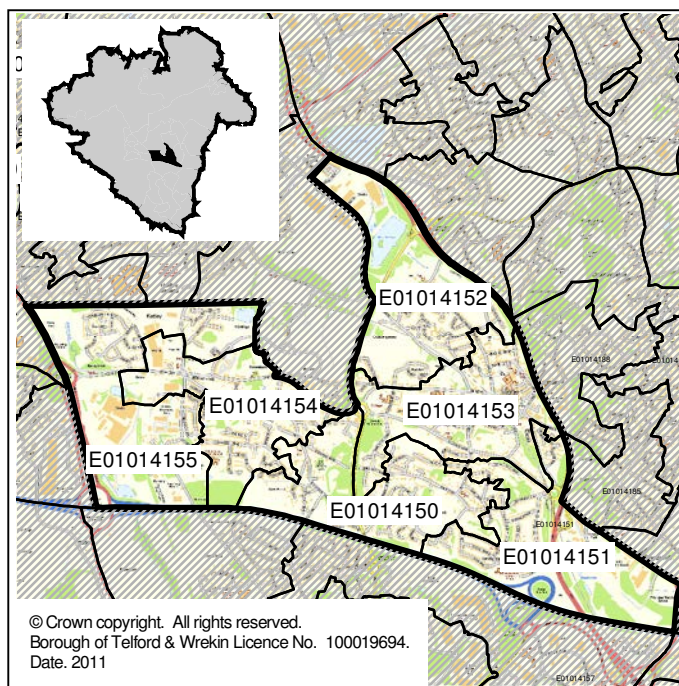
## OVERVIEW

Ketley and Oakengates is situated in the centre of the Borough.

The 2011 Census found a total ward population of 9,545, with 7.4% of these residents from a BME background, lower than the 10.6% Borough wide.

Two of the six areas in Ketley and Oakengates are ranked in the 10-20% **most** deprived nationally, but deprivation varies across the ward with one area in the 30-40% **least** deprived.

Ketley and Oakengates has a lower percentage of children eligible for free school meals (17.6%) and a higher proportion of households claiming housing or council tax benefits (32.7%) than Borough wide (21.3% and 29.1% respectively).



Educational attainment in the ward is inline with the Borough average for Early Years Foundation Stage (55.8%) but slightly lower than Borough wide for key stage 1 to 4.

Crime and antisocial behaviour rates in Ketley and Oakengates are lower than Borough wide in all but two categories – burglaries (13.5 per 1,000 population) and vehicle crimes (14.2 per 1,000 population).

Ward residents are some of the least satisfied with their local area as a place to live (69%, 76% Borough wide) but some of the most satisfied with the way Telford and Wrekin run things (72%, 61% Borough wide).

## DEPRIVATION

The table below shows the levels of deprivation within the ward. Each ward is broken down into smaller areas called SOAs (see the map above) and each area is given a national deprivation rank using the following scale:

Scale	Most deprived nationally.....					.....least deprived nationally				
	10% most deprived	10-20% most deprived	20-30% most deprived	30-40% most deprived	40-50% most deprived	40-50% least deprived	30-40% least deprived	20-30% least deprived	10-20% least deprived	10% least deprived

SOA reference	Overall Deprivation rank	Income	Employment	Health deprivation & disability	Education, skills & training	Barriers to housing & services	Crime & disorder	Living environment	Income deprivation affecting children	Income deprivation affecting older people
E01014150 South Central	30-40% least deprived	20-30% least deprived	20-30% least deprived	40-50% most deprived	40-50% least deprived	30-40% most deprived	20-30% most deprived	10-20% least deprived	20-30% least deprived	30-40% least deprived
E01014151 South East	10-20% most deprived	10-20% most deprived	10-20% most deprived	10-20% most deprived	10% most deprived	40-50% least deprived	30-40% most deprived	20-30% least deprived	10-20% most deprived	10-20% most deprived
E01014152 North	10-20% most deprived	10-20% most deprived	10-20% most deprived	10-20% most deprived	10-20% most deprived	40-50% most deprived	30-40% most deprived	20-30% least deprived	20-30% most deprived	20-30% most deprived
E01014153 East Central	20-30% most deprived	20-30% most deprived	10-20% most deprived	20-30% most deprived	20-30% most deprived	10-20% least deprived	10% most deprived	40-50% least deprived	40-50% most deprived	20-30% most deprived
E01014154 West Central	40-50% most deprived	40-50% most deprived	30-40% most deprived	30-40% most deprived	30-40% most deprived	40-50% most deprived	30-40% least deprived	10-20% least deprived	30-40% least deprived	20-30% most deprived
E01014155 West	20-30% most deprived	20-30% most deprived	20-30% most deprived	20-30% most deprived	10-20% most deprived	30-40% most deprived	20-30% most deprived	40-50% least deprived	20-30% most deprived	30-40% most deprived

# KETLEY AND OAKENGATES WARD PROFILE 2013

## HOUSING & COUNCIL TAX BENEFIT CLAIMANTS

	Households claiming Housing/Council Tax Benefits as at 10/10/12			Children eligible for free school meals as at Jan 2012
	With dependent children under 20	Without dependent children under 20	All Households claiming Housing/Council Tax Benefits	
Ketley and Oakengates (number)	392	1010	1402	173
Ketley and Oakengates (%)	9.1%	23.5%	32.7%	17.6%
Borough (number)	7,216	13,206	20,422	3,785
Borough (%)	10.3%	18.8%	29.1%	21.3%
Rank (out of 33)	13	9	12	15

## POVERTY

	No of children under 20 'in poverty' as at 31.08.10	Fuel Poverty households as at 2010
Ketley and Oakengates (number)	485	763
Ketley and Oakengates (%)	24.3%	18.6%
Borough (number)	9,745	11,279
Borough (%)	24.8%	16.7%
Rank (out of 33)	10	14

## JOB SEEKERS ALLOWANCE AND NEETS

	Young people not in education, employment or training (NEETs) Aged 16-18	People claiming Job Seekers Allowance as at October 2012			
		Total JSA Claimant rate for 18-64	Total Youth JSA Claimant rate	Male youth JSA Claimant rate	Female youth JSA Claimant rate
Ketley and Oakengates (number)	39	270*	95*	60*	35*
Ketley and Oakengates (%)	7.9% (of total NEETs)	4.0%	10.6%	6.7%	3.9%
Borough (number)	493	4,470	1,445	940	510
Borough (%)	n/a	3.6%	8.9%	5.8%	3.1%
Rank (out of 33)	2	12	11	10	8

\* Numbers have been rounded to the nearest 5

# Low numbers have been suppressed

## EDUCATIONAL ATTAINMENT

	Early Years Foundation Stage Pupils achieving a good level of development	Key Stage 1 Pupils achieving Level 2 or more in English & Maths	Key Stage 2 Pupils achieving level 4 or more in English & Maths	Key Stage 4 Pupils achieving 5 GCSE A*-C including English & Maths
Ketley and Oakengates (%)	55.8%	75.8%	77.8%	52.5%
Borough (%)	55.1%	81.2%	79.3%	55.0%
Rank (out of 33)	16	26	23	20

# KETLEY AND OAKENGATES WARD PROFILE 2013

## CRIME AND ANTI-SOCIAL BEHAVIOUR

	Ketley and Oakengates (per 1000 pop)	Rank (out of 33)	Borough (per 1000 pop)
Total Crime	#	9	61.0
Burglaries	13.5	3	8.7
Other Acquisitive Crime	#	15	16.6
Criminal Damage	#	17	6.0
Vehicle Crimes	14.2	6	10.4
Violent Crime	#	11	13.4
Other Crime	#	10	5.8
Total Anti-Social Behaviour (ASB)	#	13	64.0
ASB - Malicious communication	#	13	12.1
Other Anti-Social Behaviour	#	13	51.9

# Numbers below the borough averages have been suppressed

## HOUSING

### Tenure

		Ketley and Oakengates		Borough
		2011		2011
		Households	%	%
Owned	Owns outright	1,046	25.7%	27.2%
	Owns with a mortgage or loan	1,498	36.9%	36.5%
Shared ownership		14	0.3%	0.4%
Social rented	Rented from Council (Local Authority)	422	10.4%	8.1%
	Other social rented	529	13.0%	11.6%
Private rented	Private landlord or letting agency	468	11.5%	13.6%
	Employer of a household member	2	0.0%	0.2%
	Relative or friend of household member	31	0.8%	0.9%
	Other	8	0.2%	0.2%
Lives rent free		45	1.1%	1.2%
<i>All households</i>		<i>4,063</i>	<i>100.0%</i>	<i>100.0%</i>

### Dwelling Type

		Ketley and Oakengates		Borough
		2011		2011
		Households	%	%
House or bungalow	Detached	938	23.1%	30.8%
	Semi-detached	2,250	55.4%	36.7%
	Terrace (including end terrace)	405	10.0%	22.2%
Flat, maisonette or apartment	Purpose built	384	9.5%	8.6%
	Part of a converted or shared house (includes bed-sits)	28	0.7%	0.8%
	In a commercial building	37	0.9%	0.5%
Caravan or other mobile or temporary structure		18	0.4%	0.4%
In a shared dwelling		3	0.1%	0.0%
<i>All households</i>		<i>4,063</i>	<i>100.0%</i>	<i>100.0%</i>

# KETLEY AND OAKENGATES WARD PROFILE 2013

## VIEWS ON THE BOROUGH AND WARD AS A PLACE TO LIVE

	Ketley and Oakengates		Borough
	%	Rank (out of 33)	%
Satisfied with Telford & Wrekin as a Place to Live	79%	15	77%
Satisfied with their local area	69%	29	76%
Feel the Council was making the area a better place to live	56%	5	49%
Satisfied with the way Telford & Wrekin run things	72%	2	61%
Agree that their area is a place where people from different backgrounds get on well together	76%	17	75%

## POPULATION

### Age Structure

	Ketley and Oakengates		Borough
	2011		2011
	People	%	%
0-4	579	6.1%	6.8%
5-9	522	5.5%	6.0%
10-15	650	6.8%	7.7%
16-24	1,049	11.0%	12.1%
25-44	2,679	28.1%	27.1%
45-64	2,462	25.8%	25.8%
65-84	1,417	14.8%	12.8%
85+	187	2.0%	1.6%
<i>All usual residents</i>	<i>9,545</i>	<i>100.0%</i>	<i>100.0%</i>

### Ethnic background

	Ketley and Oakengates		Borough
	2011		2011
	People	%	%
White British	8,835	92.6%	89.5%
Other White	273	2.9%	3.2%
Mixed/multiple	173	1.8%	1.8%
Asian/Asian British	195	2.0%	4.2%
Black/African/Caribbean /Black British	44	0.5%	1.1%
Other ethnic group	25	0.3%	0.3%
<b>All BME</b>	<b>710</b>	<b>7.4%</b>	<b>10.6%</b>
<i>All usual residents</i>	<i>9,545</i>	<i>100.0%</i>	<i>100.0%</i>

### Religion

	Ketley and Oakengates		Borough
	2011		2011
	People	%	%
Buddhist	19	0.2%	0.2%
Christian	6,186	64.8%	61.7%
Hindu	35	0.4%	0.5%
Jewish	3	0.0%	0.0%
Muslim	49	0.5%	1.8%
Sikh	97	1.0%	1.3%
Other religion	46	0.5%	0.4%
No religion	2,541	26.6%	27.4%
Religion not stated	569	6.0%	6.6%
<b>Total with religion</b>	<b>6,435</b>	<b>67.4%</b>	<b>66.1%</b>
<i>All usual residents</i>	<i>9,545</i>	<i>100.0%</i>	<i>100.0%</i>

Telford & Wrekin Council, while believing the information in this publication to be correct, does not guarantee its accuracy nor does the Council accept any liability for any direct or indirect loss or damage or other consequences, however arising, from the use of such information supplied. For our full Terms and Disclaimer, please see <http://www.telford.gov.uk/terms>.

For pages 2-4, red and green shading has been used to highlight those areas ranked the best 5 (green) and worst 5 (red) in the Borough.

Full notes detailing the sources of all data and other relevant metadata can be found at [www.telford.gov.uk/factsandfigures](http://www.telford.gov.uk/factsandfigures) or by contacting us on 01952 380131.