

# LAWLEY AND OVERDALE WARD PROFILE 2013

## OVERVIEW

Lawley and Overdale ward is located in the centre of the Borough with the eastern most part covering Telford Town Centre.

The 2011 Census found a total ward population of 5,227, with 11.4% of these residents from a BME background, slightly higher than the 10.6% Borough wide.

Deprivation levels in the ward vary with the western areas in the 20-30% **most** deprived and getting less deprived as you move across to the east with the north east area in the 30-40% **least** deprived nationally.

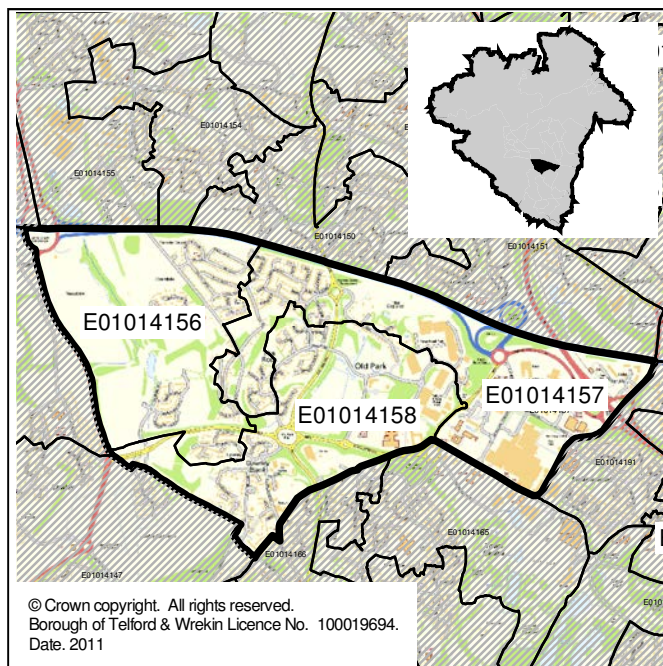
The proportion of all households in Lawley and Overdale claiming housing or council tax benefits is slightly lower than Borough wide (25.7% compared to 29.1%), but the proportion of households with dependent children claiming is slightly higher (11.0% compared to 10.3%).

At 11.5% the ward has one of the lowest proportions of households living in fuel poverty across the Borough.

Educational attainment in Lawley and Overdale is higher than Borough wide for Early Years Foundation Stage with 64.1% of pupils achieving a good level of development (55.1% Borough wide). However attainment at Key Stage 2 is one of the lowest in the Borough with 67.2% of pupils achieving level 4 or more in English and maths (79.3% Borough wide).

Rates of crime and antisocial behaviour in Lawley and Overdale are higher than Borough wide across all categories and are in the top five highest of wards for eight out of the ten. Total crime is the highest ward rate in the Borough at 172.0 per 1,000 population, with the most common crime in the area being other acquisitive crime at 103.3 per 1,000 population.

Satisfaction with the Borough is low, 68% are satisfied with Telford and Wrekin as a place to live and 49% satisfied with the way Telford & Wrekin run things (77% and 61% Borough wide).



## DEPRIVATION

The table below shows the levels of deprivation within the ward. Each ward is broken down into smaller areas called SOAs (see the map above) and each area is given a national deprivation rank using the following scale:

Scale	Most deprived nationally.....					.....least deprived nationally				
	10% most deprived	10-20% most deprived	20-30% most deprived	30-40% most deprived	40-50% most deprived	40-50% least deprived	30-40% least deprived	20-30% least deprived	10-20% least deprived	10% least deprived

SOA reference	Overall Deprivation rank	Income	Employment	Health deprivation & disability	Education, skills & training	Barriers to housing & services	Crime & disorder	Living environment	Income deprivation affecting children	Income deprivation affecting older people
E01014156 West	20-30% most deprived	20-30% most deprived	20-30% most deprived	20-30% most deprived	10-20% most deprived	30-40% most deprived	40-50% most deprived	20-30% least deprived	10-20% most deprived	20-30% most deprived
E01014157 North East	30-40% least deprived	20-30% least deprived	40-50% least deprived	40-50% most deprived	30-40% least deprived	20-30% most deprived	40-50% least deprived	10% least deprived	30-40% least deprived	30-40% least deprived
E01014158 South Central	40-50% most deprived	30-40% most deprived	30-40% most deprived	20-30% most deprived	30-40% most deprived	20-30% most deprived	30-40% least deprived	10-20% least deprived	40-50% most deprived	20-30% most deprived

# LAWLEY AND OVERDALE WARD PROFILE 2013

## HOUSING & COUNCIL TAX BENEFIT CLAIMANTS

	Households claiming Housing/Council Tax Benefits as at 10/10/12			Children eligible for free school meals as at Jan 2012
	With dependent children under 20	Without dependent children under 20	All Households claiming Housing/Council Tax Benefits	
Lawley and Overdale (number)	223	299	522	134
Lawley and Overdale (%)	11.0%	14.7%	25.7%	19.8%
Borough (number)	7,216	13,206	20,422	3,785
Borough (%)	10.3%	18.8%	29.1%	21.3%
Rank (out of 33)	10	20	17	12

## POVERTY

	No of children under 20 'in poverty' as at 31.08.10	Fuel Poverty households as at 2010
Lawley and Overdale (number)	335	224
Lawley and Overdale (%)	23.3%	11.5%
Borough (number)	9,745	11,279
Borough (%)	24.8%	16.7%
Rank (out of 33)	12	29

## JOB SEEKERS ALLOWANCE AND NEETS

	Young people not in education, employment or training (NEETs) Aged 16-18	People claiming Job Seekers Allowance as at October 2012			
		Total JSA Claimant rate for 18-64	Total Youth JSA Claimant rate	Male youth JSA Claimant rate	Female youth JSA Claimant rate
Lawley and Overdale (number)	18	140*	45*	30*	15*
Lawley and Overdale (%)	3.7% (of total NEETs)	3.5%	9.0%	6.0%	3.0%
Borough (number)	493	4,470	1,445	940	510
Borough (%)	n/a	3.6%	8.9%	5.8%	3.1%
Rank (out of 33)	13	17	15	13	17

\* Numbers have been rounded to the nearest 5

# Low numbers have been suppressed

## EDUCATIONAL ATTAINMENT

	Early Years Foundation Stage Pupils achieving a good level of development	Key Stage 1 Pupils achieving Level 2 or more in English & Maths	Key Stage 2 Pupils achieving level 4 or more in English & Maths	Key Stage 4 Pupils achieving 5 GCSE A*-C including English & Maths
Lawley and Overdale (%)	64.1%	83.3%	67.2%	51.9%
Borough (%)	55.1%	81.2%	79.3%	55.0%
Rank (out of 33)	10	19	31	22

# LAWLEY AND OVERDALE WARD PROFILE 2013

## CRIME AND ANTI-SOCIAL BEHAVIOUR

	Lawley and Overdale (per 1000 pop)	Rank (out of 33)	Borough (per 1000 pop)
Total Crime	172.0	1	61.0
Burglaries	9.3	11	8.7
Other Acquisitive Crime	103.3	1	16.6
Criminal Damage	9.4	5	6.0
Vehicle Crimes	13.5	7	10.4
Violent Crime	24.6	3	13.4
Other Crime	11.9	2	5.8
Total Anti-Social Behaviour (ASB)	94.3	4	64.0
ASB - Malicious communication	16.3	5	12.1
Other Anti-Social Behaviour	78.0	4	51.9

# Numbers below the borough averages have been suppressed

## HOUSING

### Tenure

		Lawley and Overdale		Borough
		2011		2011
		Households	%	%
Owned	Owns outright	362	18.4%	27.2%
	Owns with a mortgage or loan	955	48.5%	36.5%
Shared ownership		5	0.3%	0.4%
Social rented	Rented from Council (Local Authority)	156	7.9%	8.1%
	Other social rented	191	9.7%	11.6%
Private rented	Private landlord or letting agency	254	12.9%	13.6%
	Employer of a household member	1	0.1%	0.2%
	Relative or friend of household member	22	1.1%	0.9%
	Other	2	0.1%	0.2%
Lives rent free		21	1.1%	1.2%
<i>All households</i>		<i>1,969</i>	<i>100.0%</i>	<i>100.0%</i>

### Dwelling Type

		Lawley and Overdale		Borough
		2011		2011
		Households	%	%
House or bungalow	Detached	775	39.4%	30.8%
	Semi-detached	652	33.1%	36.7%
	Terrace (including end terrace)	447	22.7%	22.2%
Flat, maisonette or apartment	Purpose built	85	4.3%	8.6%
	Part of a converted or shared house (includes bed-sits)	9	0.5%	0.8%
	In a commercial building	1	0.1%	0.5%
Caravan or other mobile or temporary structure		0	0.0%	0.4%
In a shared dwelling		0	0.0%	0.0%
<i>All households</i>		<i>1,969</i>	<i>100.0%</i>	<i>100.0%</i>

# LAWLEY AND OVERDALE WARD PROFILE 2013

## VIEWS ON THE BOROUGH AND WARD AS A PLACE TO LIVE

	Lawley and Overdale		Borough
	%	Rank (out of 33)	%
Satisfied with Telford & Wrekin as a Place to Live	68%	30	77%
Satisfied with their local area	79%	17	76%
Feel the Council was making the area a better place to live	40%	28	49%
Satisfied with the way Telford & Wrekin run things	49%	32	61%
Agree that their area is a place where people from different backgrounds get on well together	80%	12	75%

## POPULATION

### Age Structure

	Lawley and Overdale		Borough
	2011		2011
	People	%	%
0-4	437	8.4%	6.8%
5-9	395	7.6%	6.0%
10-15	397	7.6%	7.7%
16-24	631	12.1%	12.1%
25-44	1,837	35.1%	27.1%
45-64	1,178	22.5%	25.8%
65-84	326	6.2%	12.8%
85+	26	0.5%	1.6%
<i>All usual residents</i>	<i>5,227</i>	<i>100.0%</i>	<i>100.0%</i>

### Ethnic background

	Lawley and Overdale		Borough
	2011		2011
	People	%	%
White British	4,630	88.6%	89.5%
Other White	151	2.9%	3.2%
Mixed/multiple	103	2.0%	1.8%
Asian/Asian British	294	5.6%	4.2%
Black/African/Caribbean /Black British	29	0.6%	1.1%
Other ethnic group	20	0.4%	0.3%
<b>All BME</b>	<b>597</b>	<b>11.4%</b>	<b>10.6%</b>
<i>All usual residents</i>	<i>5,227</i>	<i>100.0%</i>	<i>100.0%</i>

### Religion

	Lawley and Overdale		Borough
	2011		2011
	People	%	%
Buddhist	13	0.2%	0.2%
Christian	3,007	57.5%	61.7%
Hindu	42	0.8%	0.5%
Jewish	2	0.0%	0.0%
Muslim	47	0.9%	1.8%
Sikh	141	2.7%	1.3%
Other religion	24	0.5%	0.4%
No religion	1,597	30.6%	27.4%
Religion not stated	354	6.8%	6.6%
<b>Total with religion</b>	<b>3,276</b>	<b>62.7%</b>	<b>66.1%</b>
<i>All usual residents</i>	<i>5,227</i>	<i>100.0%</i>	<i>100.0%</i>

Telford & Wrekin Council, while believing the information in this publication to be correct, does not guarantee its accuracy nor does the Council accept any liability for any direct or indirect loss or damage or other consequences, however arising, from the use of such information supplied. For our full Terms and Disclaimer, please see <http://www.telford.gov.uk/terms>.

For pages 2-4, red and green shading has been used to highlight those areas ranked the best 5 (green) and worst 5 (red) in the Borough.

Full notes detailing the sources of all data and other relevant metadata can be found at [www.telford.gov.uk/factsandfigures](http://www.telford.gov.uk/factsandfigures) or by contacting us on 01952 380131.