

PRIORSLEE WARD PROFILE 2013

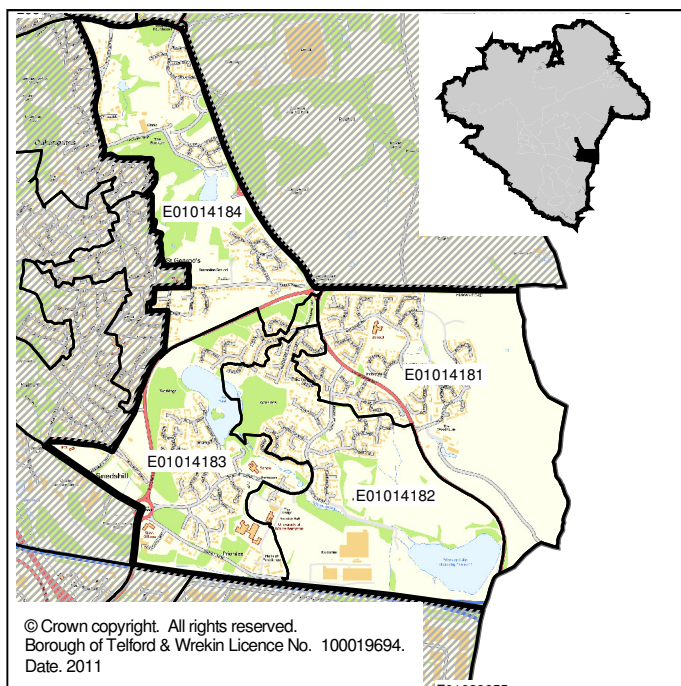
OVERVIEW

Priorslee is located in the east of the Borough.

The 2011 Census found a total ward population of 6,325 with 15.4% of these residents from a BME background, higher than the 10.6% Borough wide.

Deprivation in Priorslee is low with three out of four areas ranked in the 10% least deprived nationally.

The rate of households claiming housing or council tax benefits is the lowest ward rate across the Borough at 9.2%, less than a third of the Borough rate (29.1%). Rates of children living in poverty and households in fuel poverty are also among the lowest in the Borough.



Educational attainment in Priorslee is above the Borough average for all key stages, with attainment at Key Stage 4 the highest of all Borough wards at 82.8% (55.0% Borough wide).

Crime and antisocial behaviour rates are below the Borough average for all categories and are amongst the lowest ward rates for all but four types.

Satisfaction levels in Priorslee are above Borough rates for all measures, with three of the five ranking in the highest rates across the Borough.

DEPRIVATION

The table below shows the levels of deprivation within the ward. Each ward is broken down into smaller areas called SOAs (see the map above) and each area is given a national deprivation rank using the following scale:

Scale	Most deprived nationally.....				least deprived nationally				
	10% most deprived	10-20% most deprived	20-30% most deprived	30-40% most deprived	40-50% most deprived	40-50% least deprived	30-40% least deprived	20-30% least deprived	10-20% least deprived	10% least deprived

SOA reference	Overall Deprivation rank	Income	Employment	Health deprivation & disability	Education, skills & training	Barriers to housing & services	Crime & disorder	Living environment	Income deprivation affecting children	Income deprivation affecting older people
E01014181 East	10% least deprived	10-20% least deprived	10% least deprived	10-20% least deprived	10-20% least deprived	30-40% most deprived	10% least deprived	10% least deprived	10-20% least deprived	10-20% least deprived
E01014182 South Central	10% least deprived	10% least deprived	10% least deprived	10% least deprived	10% least deprived	40-50% most deprived	10% least deprived	10% least deprived	10% least deprived	10-20% least deprived
E01014183 South West	10% least deprived	10-20% least deprived	20-30% least deprived	20-30% least deprived	10-20% least deprived	40-50% least deprived	20-30% least deprived	10-20% least deprived	10-20% least deprived	10% least deprived
E01014184 North West	40-50% least deprived	40-50% most deprived	40-50% most deprived	30-40% most deprived	40-50% least deprived	20-30% most deprived	40-50% least deprived	10% least deprived	40-50% most deprived	30-40% least deprived

PRIORSLEE WARD PROFILE 2013

HOUSING & COUNCIL TAX BENEFIT CLAIMANTS

	Households claiming Housing/Council Tax Benefits as at 10/10/12			Children eligible for free school meals as at Jan 2012
	With dependent children under 20	Without dependent children under 20	All Households claiming Housing/Council Tax Benefits	
Priorslee (number)	88	131	219	46
Priorslee (%)	3.7%	5.5%	9.2%	11.4%
Borough (number)	7,216	13,206	20,422	3,785
Borough (%)	10.3%	18.8%	29.1%	21.3%
Rank (out of 33)	25	33	33	19

POVERTY

	No of children under 20 'in poverty' as at 31.08.10	Fuel Poverty households as at 2010
Priorslee (number)	115	179
Priorslee (%)	7.3%	7.3%
Borough (number)	9,745	11,279
Borough (%)	24.8%	16.7%
Rank (out of 33)	32	31

JOB SEEKERS ALLOWANCE AND NEEDS

	Young people not in education, employment or training (NEETs) Aged 16-18	People claiming Job Seekers Allowance as at October 2012			
		Total JSA Claimant rate for 18-64	Total Youth JSA Claimant rate	Male youth JSA Claimant rate	Female youth JSA Claimant rate
Priorslee (number)	#	75*	20*	10*	10*
Priorslee (%)	#	1.4%	2.9%	1.4%	1.4%
Borough (number)	493	4,470	1,445	940	510
Borough (%)	n/a	3.6%	8.9%	5.8%	3.1%
Rank (out of 33)	31	29	31	32	26

* Numbers have been rounded to the nearest 5

Low numbers have been suppressed

EDUCATIONAL ATTAINMENT

	Early Years Foundation Stage Pupils achieving a good level of development	Key Stage 1 Pupils achieving Level 2 or more in English & Maths	Key Stage 2 Pupils achieving level 4 or more in English & Maths	Key Stage 4 Pupils achieving 5 GCSE A*-C including English & Maths
Priorslee (%)	64.4%	83.7%	86.8%	82.8%
Borough (%)	55.1%	81.2%	79.3%	55.0%
Rank (out of 33)	9	18	10	1

PRIORSLEE WARD PROFILE 2013

CRIME AND ANTI-SOCIAL BEHAVIOUR

	Priorslee (per 1000 pop)	Rank (out of 33)	Borough (per 1000 pop)
Total Crime	#	29	61.0
Burglaries	#	26	8.7
Other Acquisitive Crime	#	32	16.6
Criminal Damage	#	26	6.0
Vehicle Crimes	#	27	10.4
Violent Crime	#	31	13.4
Other Crime	#	24	5.8
Total Anti-Social Behaviour (ASB)	#	30	64.0
ASB - Malicious communication	#	29	12.1
Other Anti-Social Behaviour	#	32	51.9

Numbers below the borough averages have been suppressed

HOUSING

Tenure

		Priorslee 2011		Borough 2011
		Households	%	%
Owned	Owns outright	762	33.6%	27.2%
	Owns with a mortgage or loan	1,044	46.1%	36.5%
Shared ownership		4	0.2%	0.4%
Social rented	Rented from Council (Local Authority)	14	0.6%	8.1%
	Other social rented	110	4.9%	11.6%
Private rented	Private landlord or letting agency	224	9.9%	13.6%
	Employer of a household member	50	2.2%	0.2%
	Relative or friend of household member	12	0.5%	0.9%
	Other	33	1.5%	0.2%
Lives rent free		14	0.6%	1.2%
<i>All households</i>		<i>2,267</i>	<i>100.0%</i>	<i>100.0%</i>

Dwelling Type

		Priorslee 2011		Borough 2011
		Households	%	%
House or bungalow	Detached	1,683	74.2%	30.8%
	Semi-detached	285	12.6%	36.7%
	Terrace (including end terrace)	246	10.9%	22.2%
Flat, maisonette or apartment	Purpose built	29	1.3%	8.6%
	Part of a converted or shared house (includes bed-sits)	21	0.9%	0.8%
	In a commercial building	1	0.0%	0.5%
Caravan or other mobile or temporary structure		0	0.0%	0.4%
In a shared dwelling		2	0.1%	0.0%
<i>All households</i>		<i>2,267</i>	<i>100.0%</i>	<i>100.0%</i>

PRIORSLEE WARD PROFILE 2013

VIEWS ON THE BOROUGH AND WARD AS A PLACE TO LIVE

	Priorslee		Borough
	%	Rank (out of 33)	%
Satisfied with Telford & Wrekin as a Place to Live	92%	2	77%
Satisfied with their local area	90%	5	76%
Feel the Council was making the area a better place to live	55%	8	49%
Satisfied with the way Telford & Wrekin run things	71%	4	61%
Agree that their area is a place where people from different backgrounds get on well together	81%	10	75%

POPULATION

Age Structure

	Priorslee 2011		Borough 2011
	People	%	%
0-4	378	6.0%	6.8%
5-9	444	7.0%	6.0%
10-15	560	8.9%	7.7%
16-24	687	10.9%	12.1%
25-44	1,619	25.6%	27.1%
45-64	1,921	30.4%	25.8%
65-84	645	10.2%	12.8%
85+	71	1.1%	1.6%
<i>All usual residents</i>	<i>6,325</i>	<i>100.0%</i>	<i>100.0%</i>

Ethnic background

	Priorslee 2011		Borough 2011
	People	%	%
White British	5,349	84.6%	89.5%
Other White	99	1.6%	3.2%
Mixed/multiple	100	1.6%	1.8%
Asian/Asian British	670	10.6%	4.2%
Black/African/Caribbean /Black British	39	0.6%	1.1%
Other ethnic group	68	1.1%	0.3%
All BME	976	15.4%	10.6%
<i>All usual residents</i>	<i>6,325</i>	<i>100.0%</i>	<i>100.0%</i>

Religion

	Priorslee 2011		Borough 2011
	People	%	%
Buddhist	23	0.4%	0.2%
Christian	3,899	61.6%	61.7%
Hindu	119	1.9%	0.5%
Jewish	2	0.0%	0.0%
Muslim	125	2.0%	1.8%
Sikh	275	4.3%	1.3%
Other religion	15	0.2%	0.4%
No religion	1,495	23.6%	27.4%
Religion not stated	372	5.9%	6.6%
Total with religion	4,458	70.5%	66.1%
<i>All usual residents</i>	<i>6,325</i>	<i>100.0%</i>	<i>100.0%</i>

Telford & Wrekin Council, while believing the information in this publication to be correct, does not guarantee its accuracy nor does the Council accept any liability for any direct or indirect loss or damage or other consequences, however arising, from the use of such information supplied. For our full Terms and Disclaimer, please see <http://www.telford.gov.uk/terms>.

For pages 2-4, red and green shading has been used to highlight those areas ranked the best 5 (green) and worst 5 (red) in the Borough.

Full notes detailing the sources of all data and other relevant metadata can be found at www.telford.gov.uk/factsandfigures or by contacting us on 01952 380131.