

Employment deprivation domain

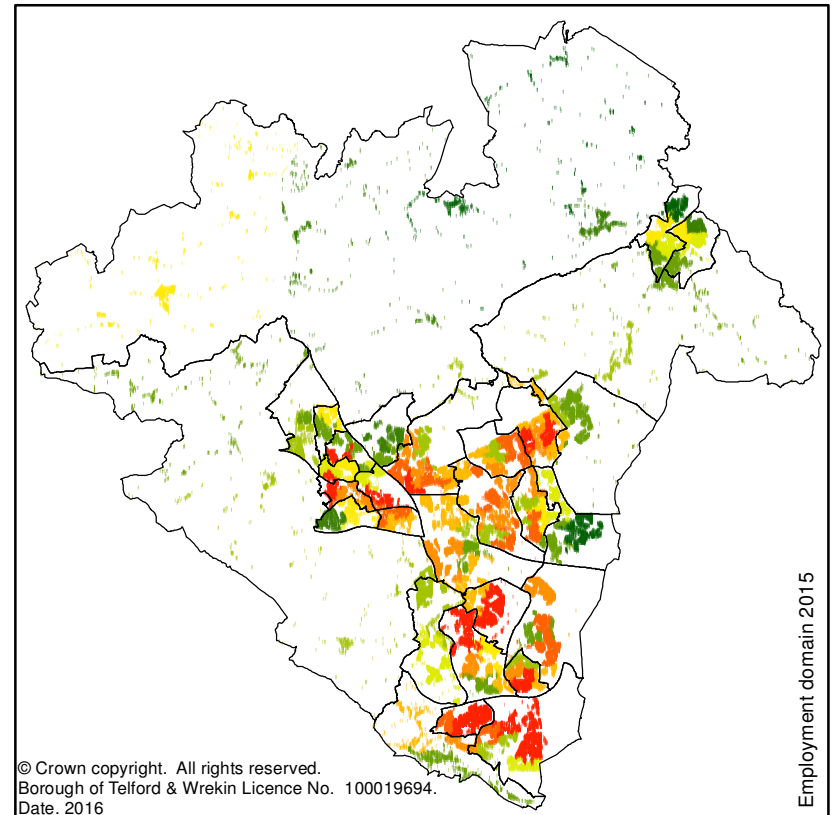
Summary

A total of 21 areas in Telford and Wrekin are ranked in the 10% most deprived nationally for employment. These are located in the wards of Brookside (x2), Woodside (x4), Madeley & Sutton Hill (x4), Malinslee & Dawley Bank (x3), Dawley & Aqueduct (x2), Donnington (x2), Hadley & Leegomery, Haygate and College.

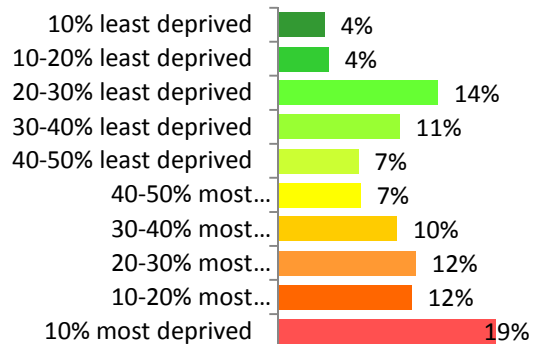
All areas that were in the 10% **most** deprived in 2010 (16 in total) were still there in 2015, similarly at the other end of the scale, all areas that were in the 10% **least** deprived in 2010 were still there in 2015. Of the 46 areas that changed decile, 25 got more relatively deprived.

The 2015 picture of the most deprived areas in the Borough looks very similar to 2010 with additional areas in Haygate, Hadley & Leegomery and Donnington. Some areas have moved out of the most deprived in St Georges, Muxton, The Nedge and Madeley & Sutton Hill.

Almost a third (31%) of the Borough's population lives in the 20% most deprived areas, similar to the proportion in 2010.



Percentage of population in each decile 2015



Percentage of areas in same decile as 2010

