

Index of Multiple Deprivation

Summary

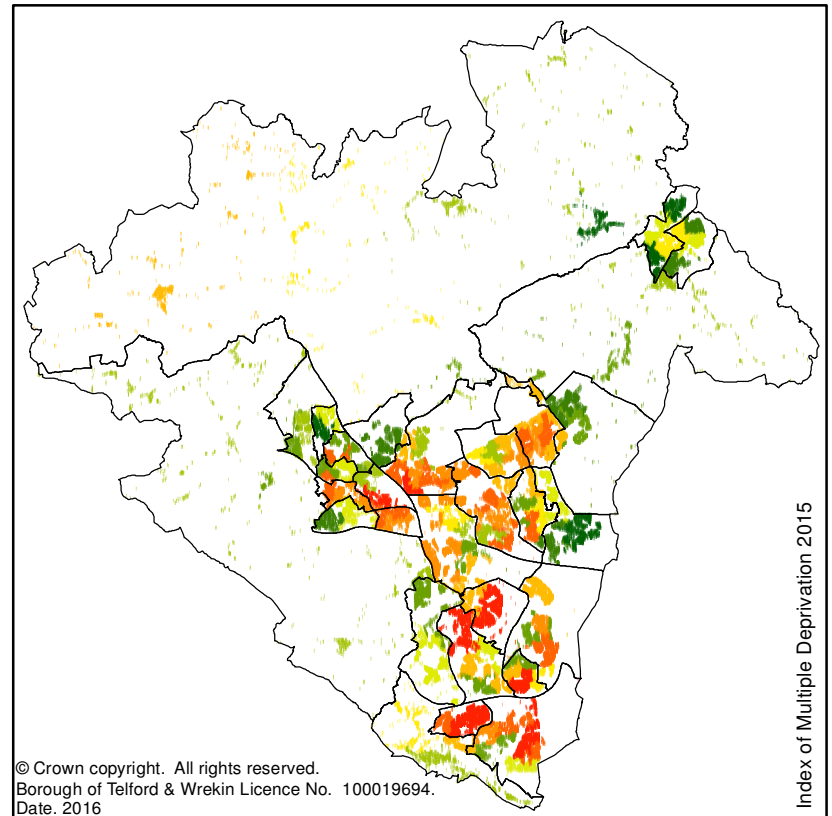
Telford and Wrekin has significant pockets of deprivation, but due to the diverse nature of the Borough also has areas in the least deprived areas nationally.

A total of 15 areas in the Borough are ranked in the 10% most deprived nationally, in the wards of Woodside (x4), Malinslee & Dawley Bank (x3), Madeley & Sutton Hill (x2), Brookside (x2), Hadley & Leegomery, Dawley & Aqueduct and College.

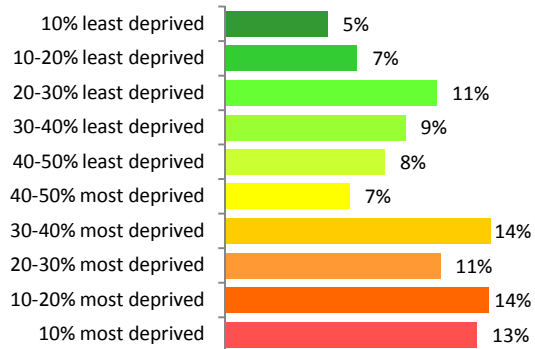
The majority of areas in the 20% most deprived in 2010 are still there in 2015, in line with national trend greater movement is seen in those areas in the middle. Of the 32 areas that moved decile, 21 got more relatively deprived.

The 2015 picture of the most deprived areas in Telford and Wrekin looks very similar to 2010 with new areas in Haygate, Park and Dothill and additional areas in Hadley & Leegomery and The Nedge.

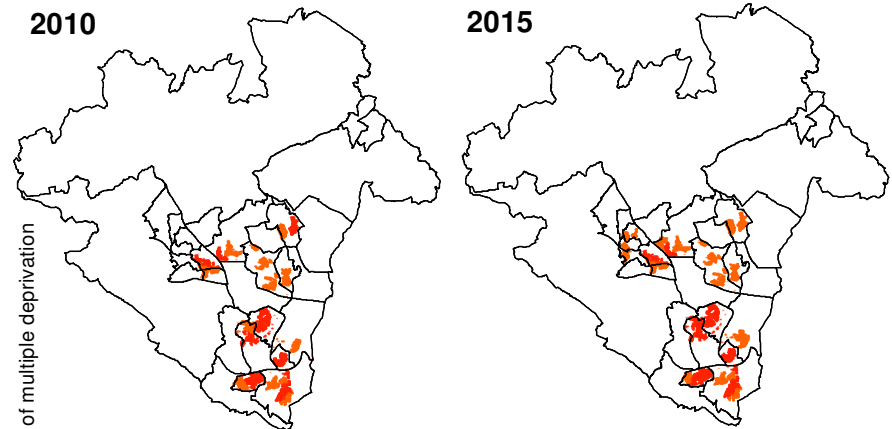
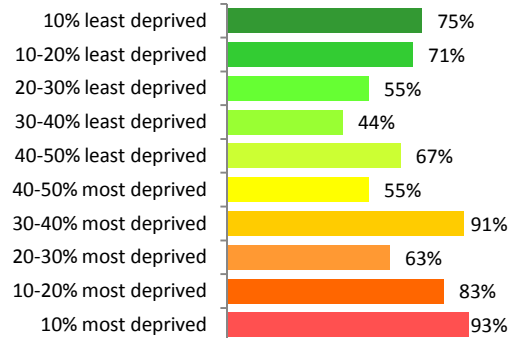
More than a quarter (27%) of the Borough's population lives in the 20% most deprived areas nationally an increase on 24% in 2010.



Percentage of population in each decile 2015



Percentage of areas in same decile as 2010



Income deprivation domain

Summary

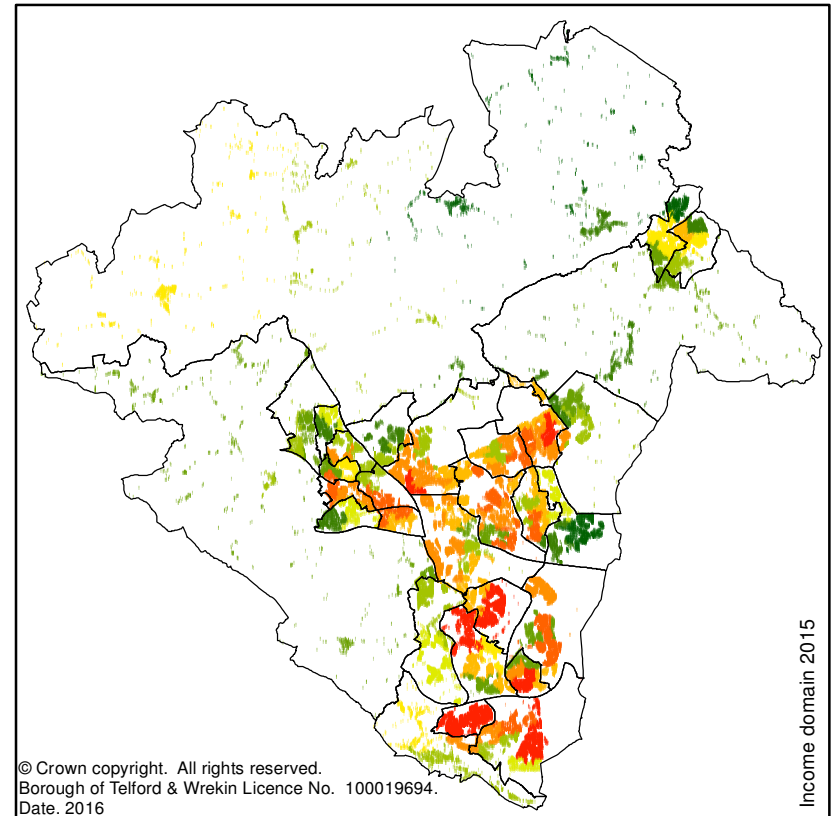
A total of 17 areas in Telford and Wrekin are ranked in the 10% most deprived nationally for income deprivation, these are in the wards of Brookside (x2), Madeley & Sutton Hill (x3), Woodside (x5), Malinslee & Dawley Bank (x3), Hadley & Leegomery, Dawley & Aqueduct (x2) and Donnington.

The majority of areas in the 20% most deprived in 2010 were still there in 2015, with less than half of areas previously in the 10% **least** deprived remaining there. Of the 34 areas that moved decile, 20 became more relatively deprived.

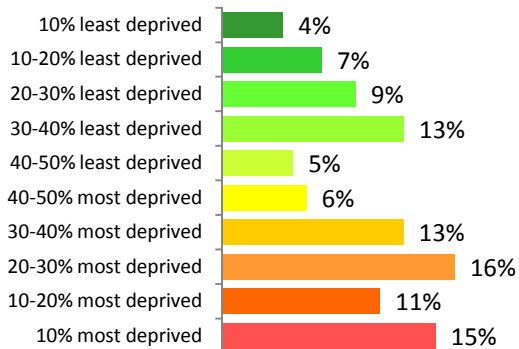
The 2015 picture of most deprived areas is very similar to that seen in 2010, with new areas in Wrockwardine Wood & Trench and Hadley & Leegomery.

More than a quarter (26%) of the Borough's population live in areas ranked in the 20% most deprived nationally for income deprivation the same proportion as in 2010.

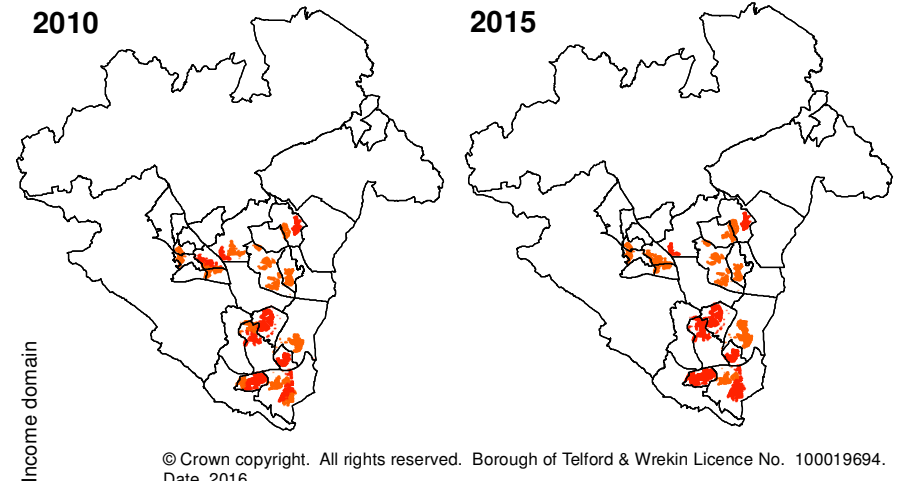
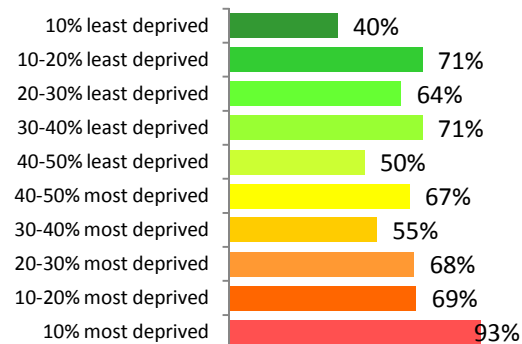
In 2010 the most deprived area in Telford and Wrekin was ranked 666th nationally with 1 being most deprived. In 2015 the most deprived area in the Borough ranks 154th nationally.



Percentage of population in each decile 2015



Percentage of areas in same decile as 2010



Employment deprivation domain

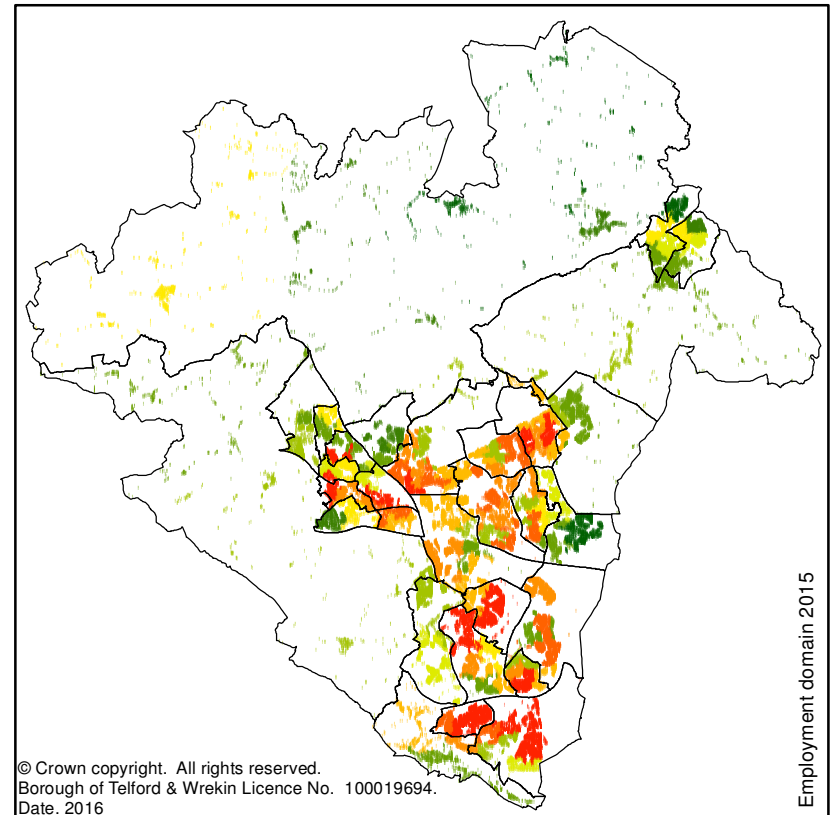
Summary

A total of 21 areas in Telford and Wrekin are ranked in the 10% most deprived nationally for employment. These are located in the wards of Brookside (x2), Woodside (x4), Madeley & Sutton Hill (x4), Malinslee & Dawley Bank (x3), Dawley & Aqueduct (x2), Donnington (x2), Hadley & Leegomery, Haygate and College.

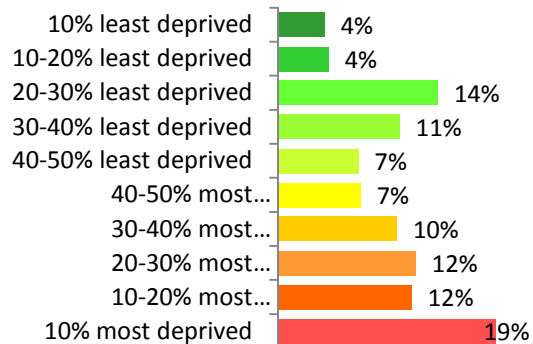
All areas that were in the 10% **most** deprived in 2010 (16 in total) were still there in 2015, similarly at the other end of the scale, all areas that were in the 10% **least** deprived in 2010 were still there in 2015. Of the 46 areas that changed decile, 25 got more relatively deprived.

The 2015 picture of the most deprived areas in the Borough looks very similar to 2010 with additional areas in Haygate, Hadley & Leegomery and Donnington. Some areas have moved out of the most deprived in St Georges, Muxton, The Nedge and Madeley & Sutton Hill.

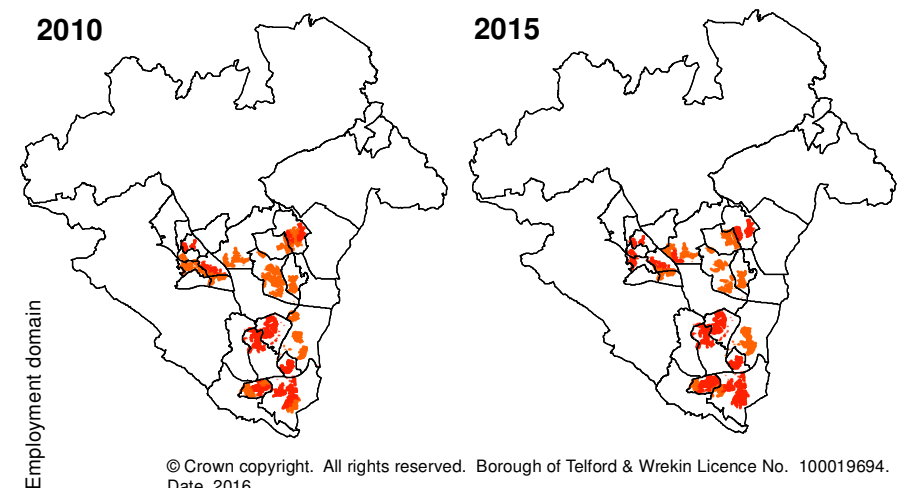
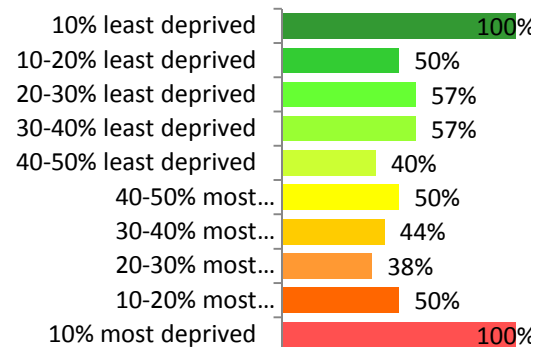
Almost a third (31%) of the Borough's population lives in the 20% most deprived areas, similar to the proportion in 2010.



Percentage of population in each decile 2015



Percentage of areas in same decile as 2010



Education, skills & training domain

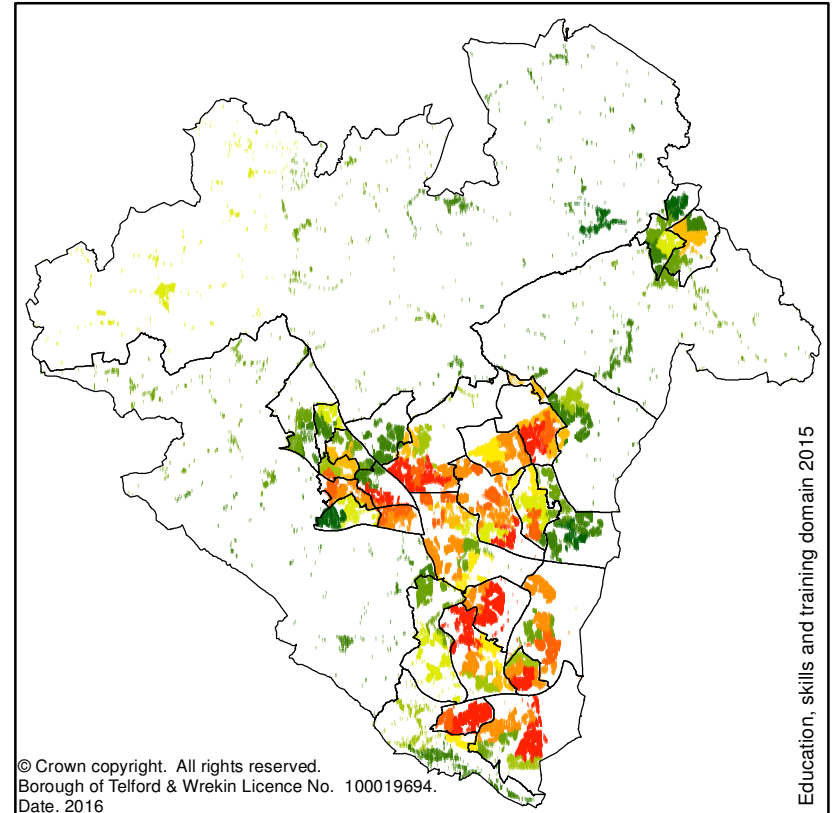
Summary

A total of 21 areas in Telford and Wrekin are ranked in the 10% most deprived for education, skills and training, located in the wards of Hadley & Leegomery (x3), Woodside (x4), Brookside (x2), Malinslee & Dawley Bank (x3), Madeley & Sutton Hill (x3), College, Dawley & Aqueduct (x2), Donnington (x2) and Oakengates & Ketley Bank.

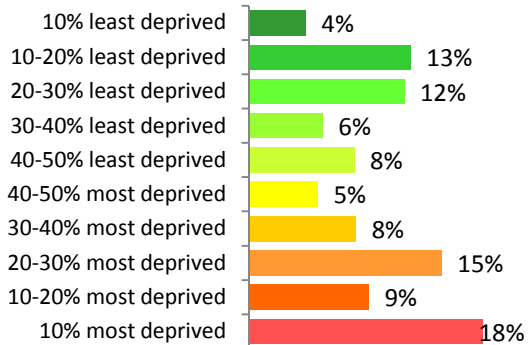
The majority of areas in the 10% most deprived in 2010 are still there in 2015, this domain has seen a fair amount of change since 2010 with 59 areas changing their ranked decile. Of these 59 areas, 47 improved their decile ranking with one area in Madeley & Sutton Hill moving from the 30-40% **most** deprived to the 30-40% **least** deprived.

Looking at the most deprived areas in the Borough in 2010 and 2015, there have been a number of changes. Large areas in Donnington, and Ketley & Overdale that were in the 20% most deprived in 2010 are no longer there in 2015, but new areas have appeared in Park and Haygate.

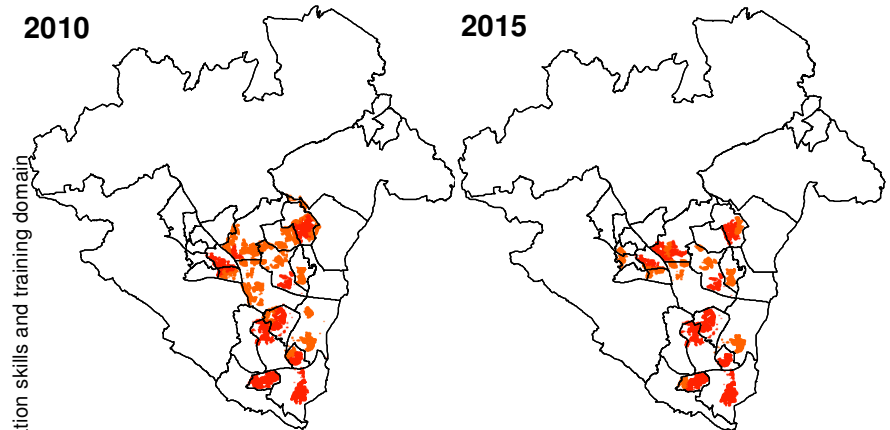
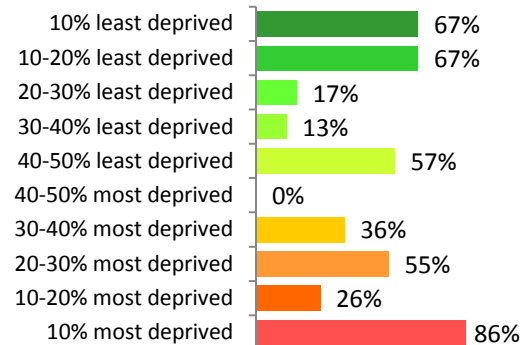
Some 28% of the Borough's population are living in the 20% most deprived areas nationally considerably less than the 38% in 2010.



Percentage of population in each decile 2015



Percentage of areas in same decile as 2010



Health deprivation domain

Summary

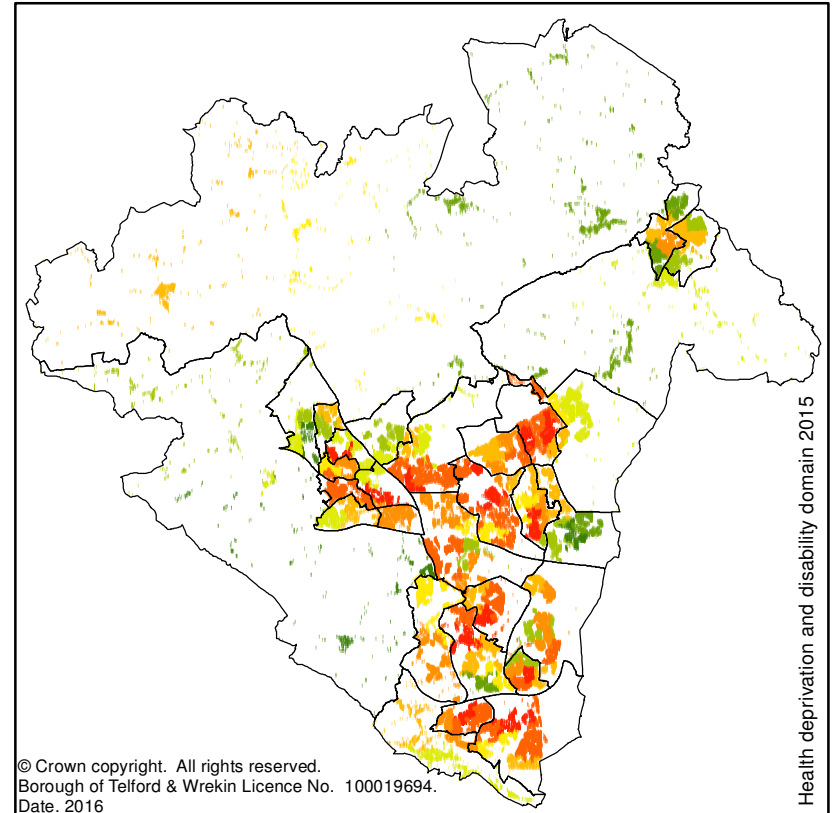
A total of 12 areas in Telford and Wrekin are ranked in the 10% most deprived nationally, located in the wards of Brookside, Woodside, Donnington (x2), College, St Georges, Hadley & Leegomery, Malinslee & Dawley Bank, Madeley & Sutton Hill, Dothill, Oakengates and Ketley Bank and Dawley & Aqueduct.

Half of areas that were in the 10% most deprived in 2010 are still there in 2015. Of the 66 areas that moved decile between 2010 and 2015, 54 of them became more relatively deprived.

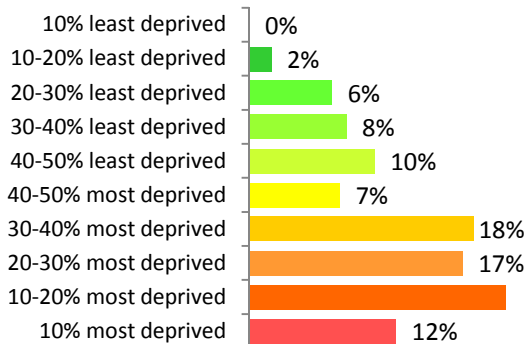
The picture of most deprived areas (top 20%) in 2015 is very similar to 2010 with additional areas appearing in Hadley & Leegomery, St Georges and Park.

A third (33%) of the Borough's population live in areas ranked in the 20% most deprived nationally for health deprivation and disability an increase on 25% from 2010.

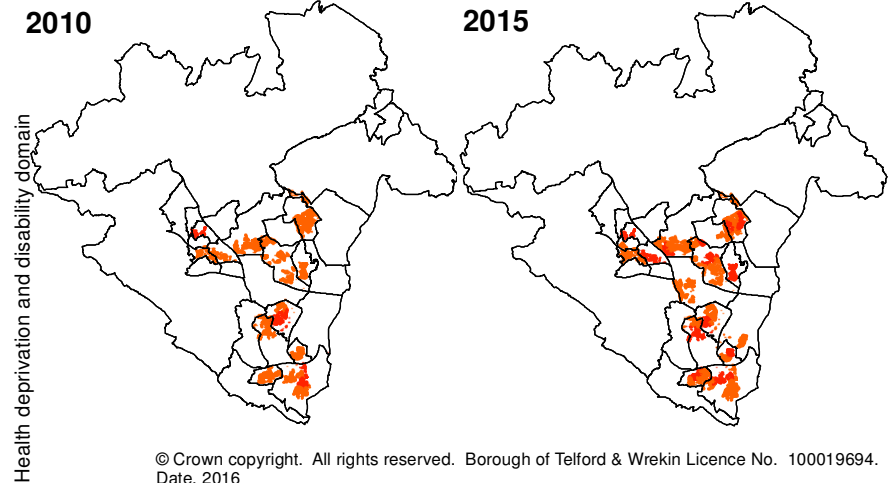
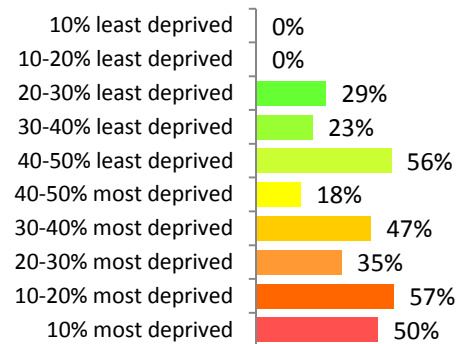
In 2010 the most deprived area in the Borough was ranked 1866 (with 1 being most deprived), in 2015 the most deprived area in the Borough was ranked 1509.



Percentage of population in each decile 2015



Percentage of areas in same decile as 2010



Crime deprivation domain

Summary

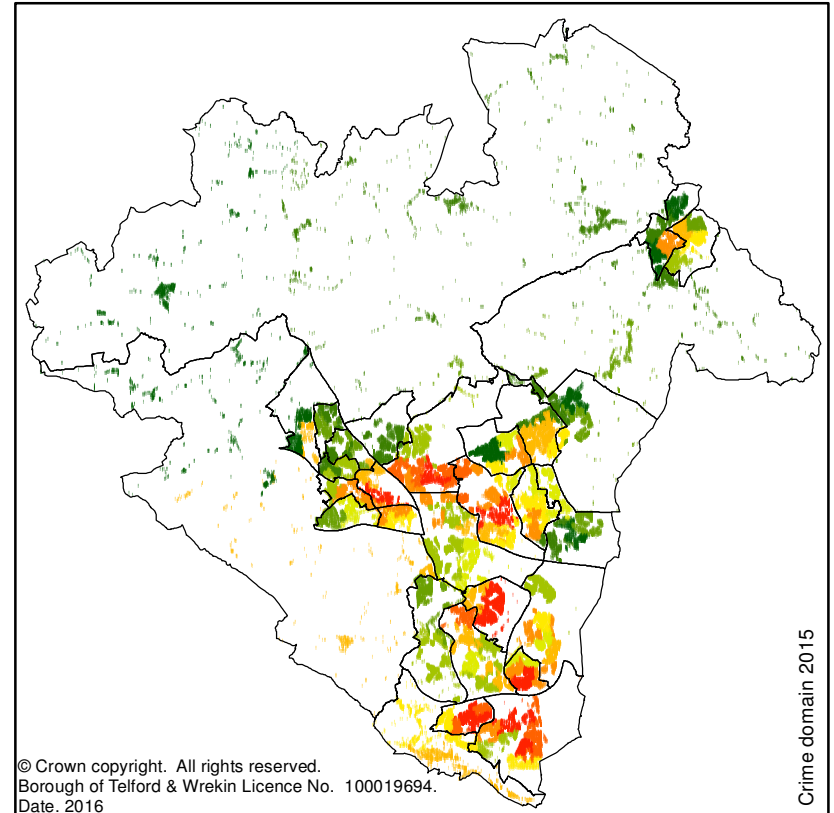
A total of 12 areas in Telford and Wrekin are ranked in the 10% most deprived nationally, located in the wards of Madeley & Sutton Hill (x2), Brookside (x2), Woodside (x2), Malinslee & Dawley Bank (x3), Oakengates & Ketley Bank, College, Hadley & Leegomery.

A total of 64 areas (out of a total 108) have changed their ranked decile since 2010 with more than half of these (34) improving.

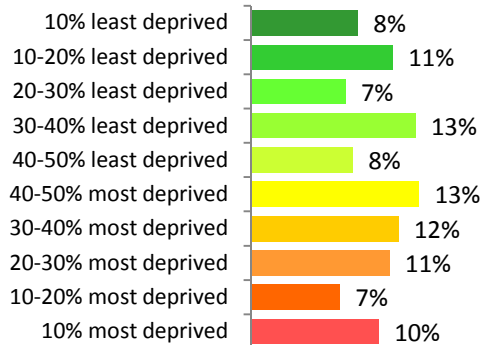
The picture of most deprived areas in Telford and Wrekin has changed very little since 2010, but some areas in The Nedge and Arleston are no longer present, but additional areas can be seen in Woodside and Madeley & Sutton Hill.

Some 17% of the Borough's population are living in areas ranked in the 20% most deprived nationally, less than the 21% seen in 2010.

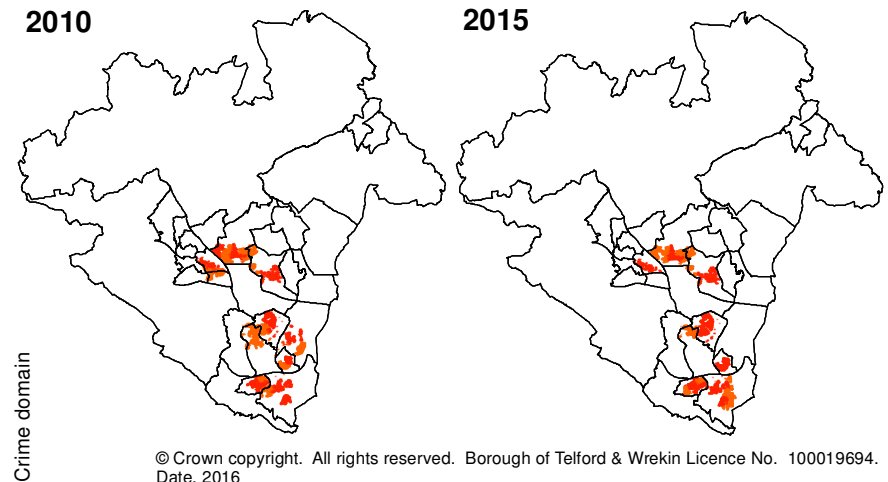
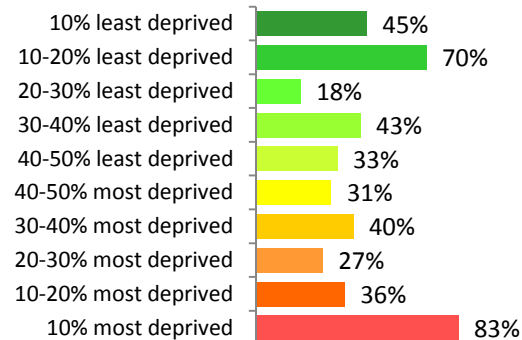
In 2010, the most deprived area in Telford and Wrekin was ranked 533 (with 1 being most deprived), in 2015 the most deprived area in the Borough is ranked 98.



Percentage of population in each decile 2015



Percentage of areas in same decile as 2010



Barriers to housing and services domain

Summary

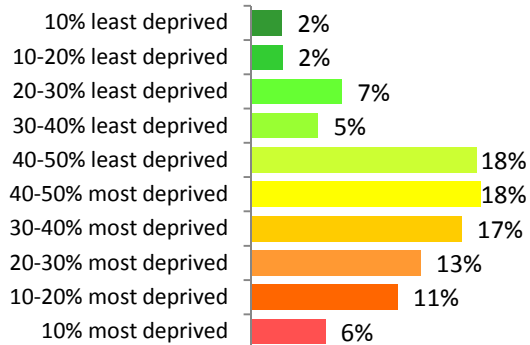
A total of seven areas in Telford & Wrekin are ranked in the 10% most deprived nationally, located in the wards of Edgmond & Ercall Magna (x3), Woodside (x2), Brookside, Admaston & Bratton.

All areas that were ranked in the 10% most deprived in 2010 are still there in 2015 with areas in Brookside, Admaston & Bratton and Woodside having become more relatively deprived since 2010 and now ranking in the 10% most deprived. Other ranked deciles have seen much more movement with 77 areas having changed their ranked decile since 2010. Of these 77 areas, 57 areas become more relatively deprived.

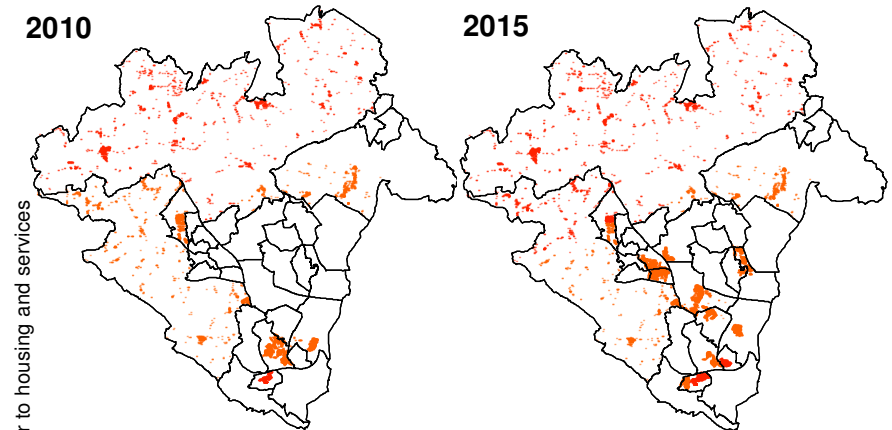
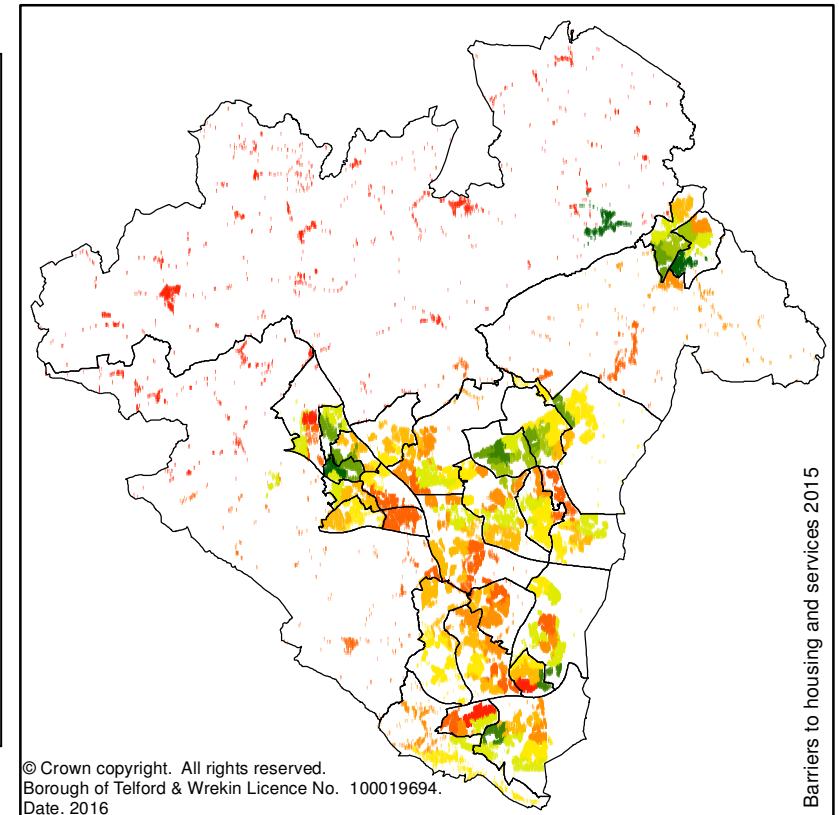
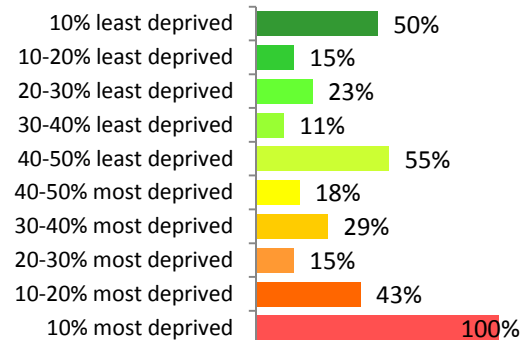
In 2010 the most deprived areas (ranked in the 20% most deprived) in Telford and Wrekin were mostly in the rural and southern areas of the Borough, but in 2015 new areas have appeared in the centre in the wards of Arleston, College, Hadley & Leegomery, Ketley & Overdale and Malinslee & Dawley Bank.

Some 17% of the Borough's population live in areas ranked in the 20% **most** deprived nationally compared to just 5% living in areas ranked in the 20% **least** deprived.

Percentage of population in each decile 2015



Percentage of areas in same decile as 2010



Living environment domain

Summary

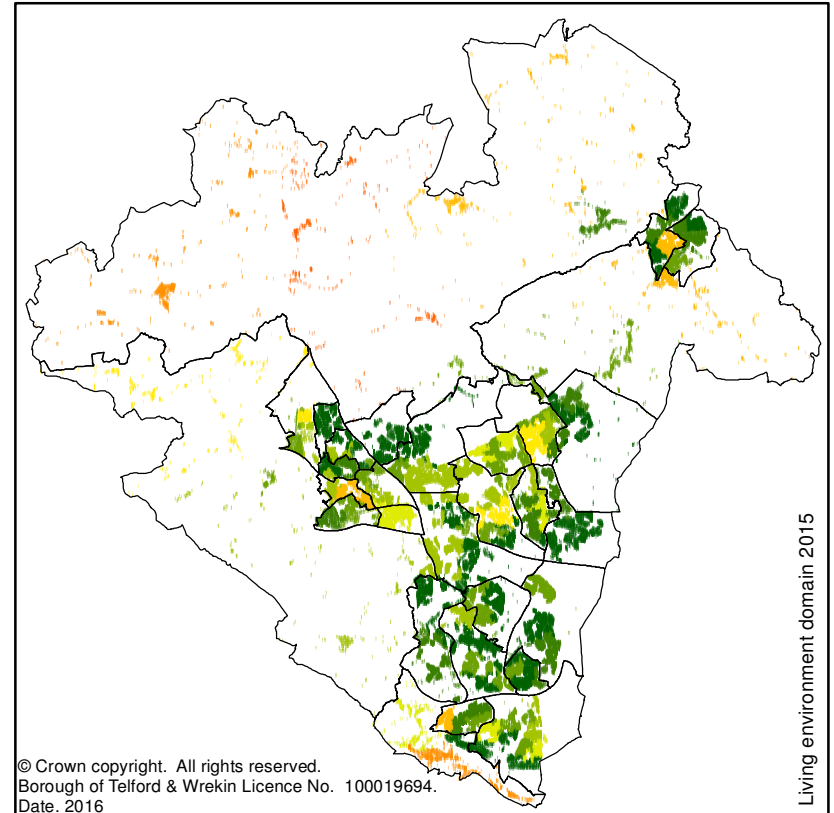
There are no areas in Telford and Wrekin ranked in the 10% most deprived for living environment. The most deprived area in the Borough is located in Edgmond & Ercall Magna and is ranked in the 10-20% most deprived.

In 2010 the most deprived area in Telford & Wrekin was ranked in the 30-40% most deprived areas nationally, in 2015 there are two areas ranked 20-30% most deprived and one area ranked 10-20% most deprived.

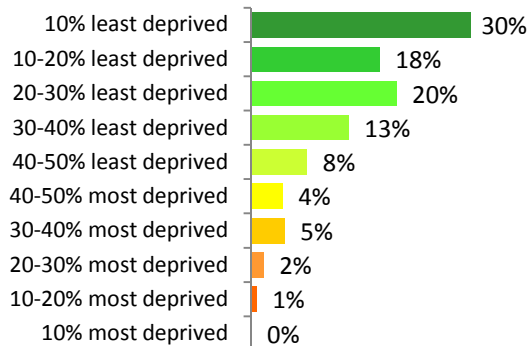
Areas in Telford and Wrekin saw a lot of change in rankings between 2010 and 2015 with 80 areas out of 108 moving ranked decile, 42 of these became more relatively deprived between 2010 and 2015.

Just 1% of Telford & Wrekin's population live in areas ranked in the 20% **most** deprived nationally compared to almost half (48%) of the population living in areas ranking in the 20% **least** deprived.

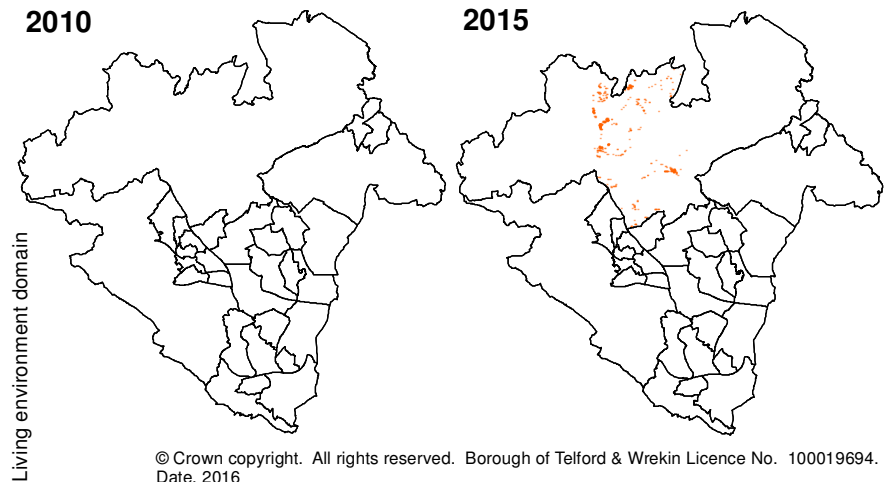
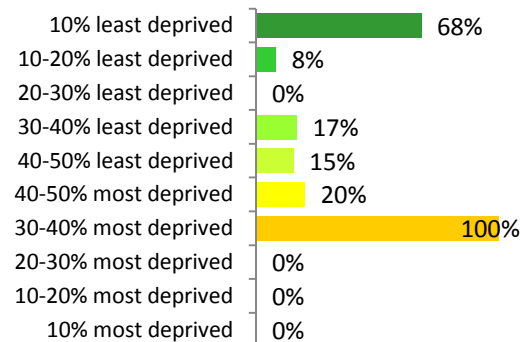
In 2010 the most deprived area in Telford and Wrekin was ranked 11,964 (with 1 being most deprived), in 2015 the most deprived area is ranked 4001.



Percentage of population in each decile 2015



Percentage of areas in same decile as 2010



Income deprivation affecting children index

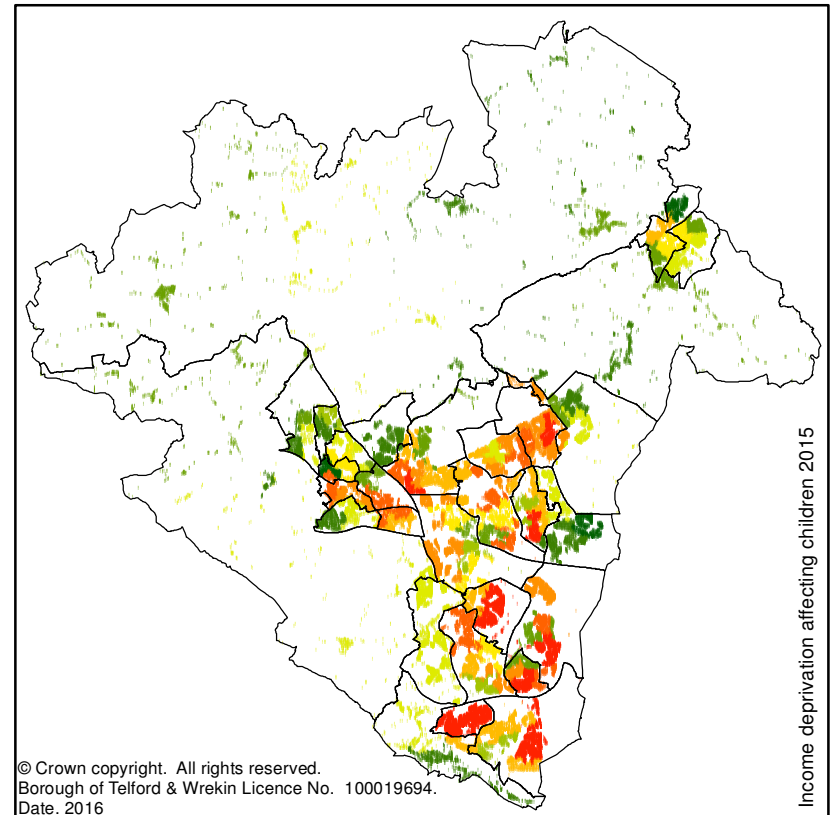
Summary

A total of 18 areas in Telford and Wrekin are ranked in the 10% most deprived nationally, located in the wards of Brookside (x2), Madeley & Sutton Hill (x3), Woodside (x5), Malinslee & Dawley Bank (x3), Hadley & Leegomery, Donnington, The Nedge (x2) and St Georges.

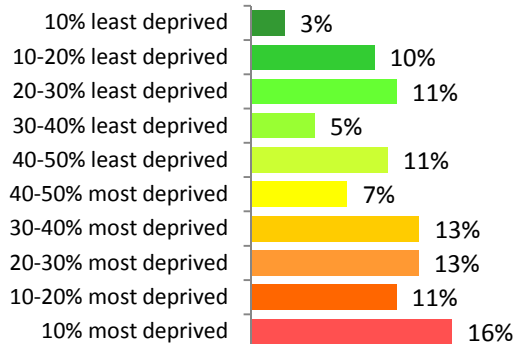
The majority of areas in the 10% most deprived in 2010 remained there in 2015. A total of 59 areas in Telford and Wrekin have changed ranked decile since 2010 with 33 of these becoming more relatively deprived.

The picture of the most deprived areas in Telford and Wrekin is very similar in 2015 to 2010, being concentrated around the central and south areas of the Borough, however further areas have appeared in Hadley & Leegomery, The Nedge, St Georges, Oakengates & Ketley Bank and Donnington, with areas of Muxton and Ketley & Overdale no longer ranking in the 20% most deprived.

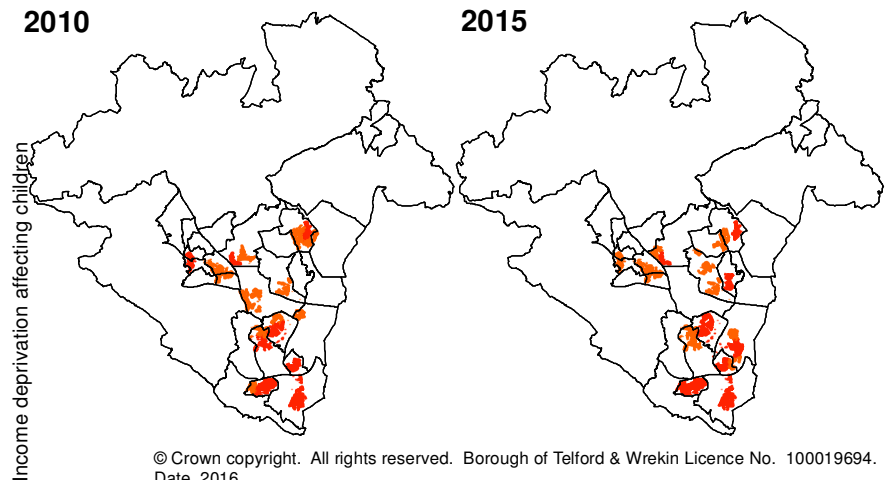
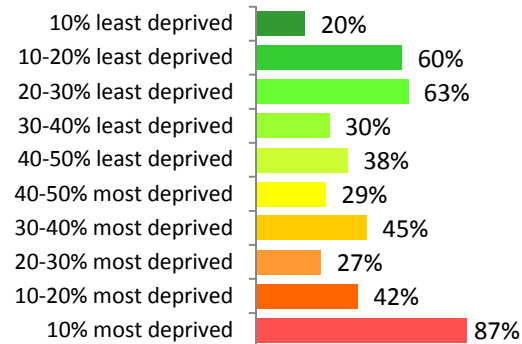
More than a quarter (27%) of the Borough's population live in areas ranked in the 20% **most** deprived nationally, compared to 12% living in the 20% **least** deprived areas.



Percentage of population in each decile 2015



Percentage of areas in same decile as 2010



Income deprivation affecting older people index

Summary

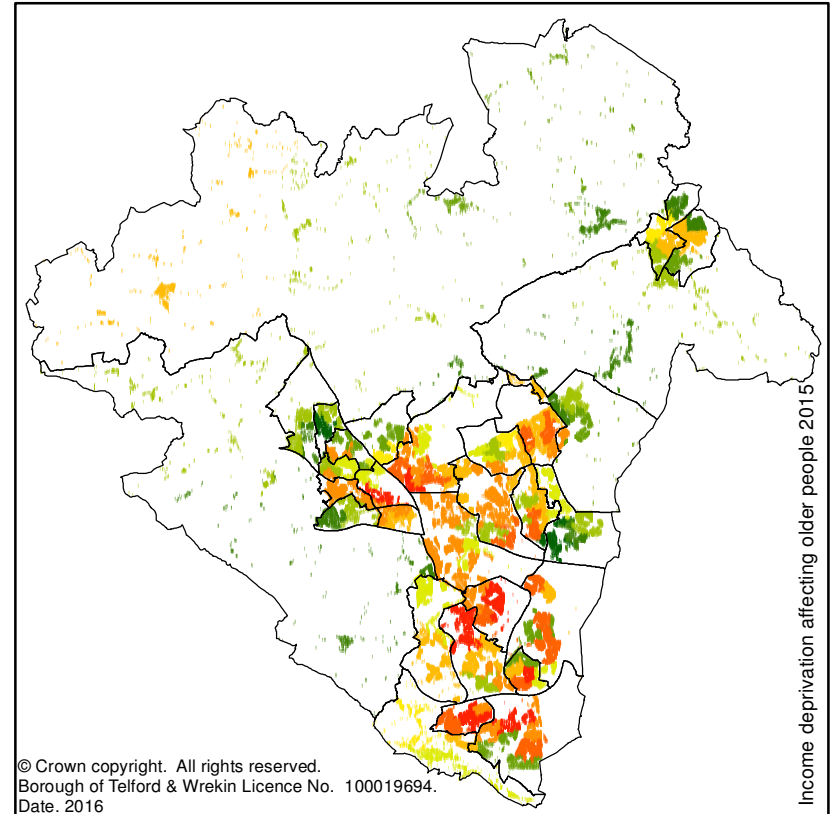
A total of ten areas in Telford and Wrekin are ranked in the 10% most deprived nationally, located in the wards of Woodside (x2), Malinslee & Dawley Bank (x2), Hadley & Leegomery, Brookside, Madeley & Sutton Hill, College and Dawley & Aqueduct (x2).

Around half of areas in the 10% most deprived in 2010 remain there in 2015, greater change than seen in other domains. A total of 55 areas in Telford and Wrekin have changed decile since 2010 with 32 of these having become more relatively deprived.

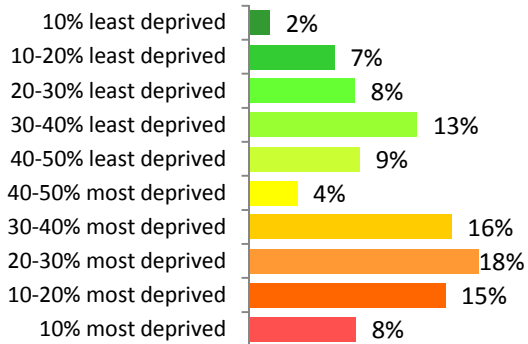
The picture of most deprived areas in 2010 and 2015 is very similar with the general neighbourhoods highlighted being the same. Haygate and Arleston wards no longer contain areas ranked in the 20% most deprived and Muxton ward has new areas of high deprivation.

Almost a quarter (24%) of residents live in areas ranked in the 20% **most** deprived compared to just 8% living in areas ranked in the 20% **least** deprived.

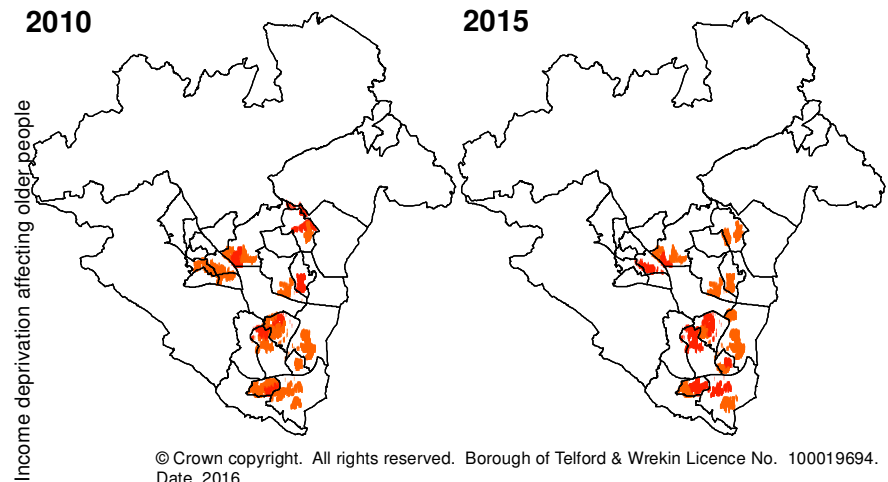
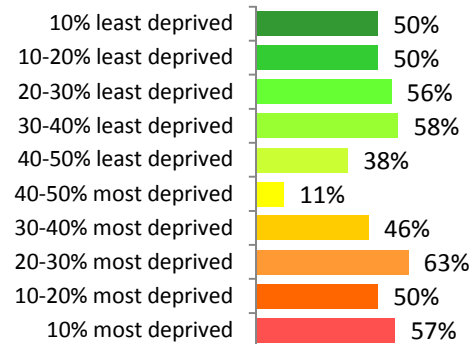
In 2010 the most deprived area in the Borough was ranked 1963 (where 1 is most deprived), in 2015 the most deprived area in ranked 2165.



Percentage of population in each decile 2015



Percentage of areas in same decile as 2010



Children and young people sub-domain

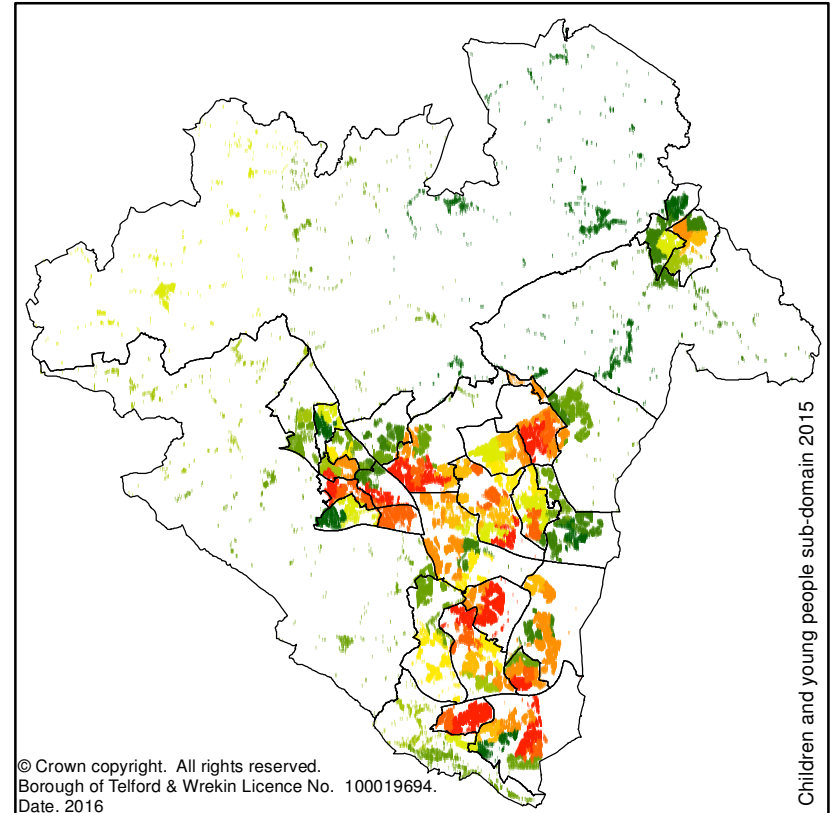
Summary

A total of 19 areas in Telford and Wrekin are ranked in the 10% most deprived nationally for the children and young people sub domain, these are in the wards of Woodside (x4), Madeley & Sutton Hill (x2), Malinslee & Dawley Bank (x3), Hadley & Leegomery (x3), Dawley & Aqueduct, Brookside, College, Haygate, Donnington (x2) and Oakengates & Ketley Bank.

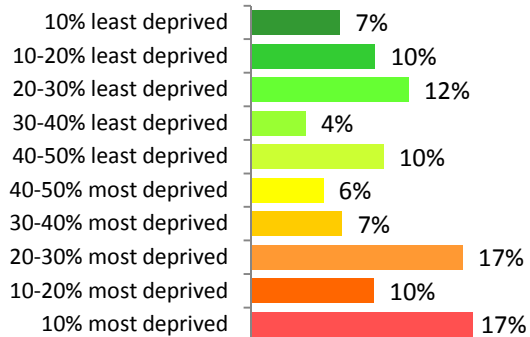
Two thirds of areas in the 10% **most** deprived in 2010 were still there in 2015, with three quarters of those in the 10% **least** deprived remain there. Of the 58 areas that moved decile between 2010 and 2015, 42 of them became **less** relatively deprived.

The 2015 picture of most deprived areas is similar to that seen in 2010 with areas in The Nedge, Wrockwardine Wood & Trench, Ketley & Overdale and Muxton no longer showing and new areas in Haygate and Park.

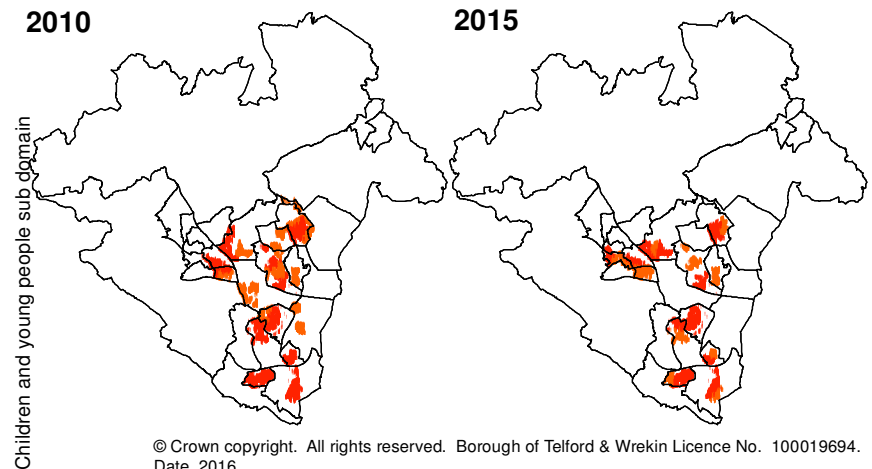
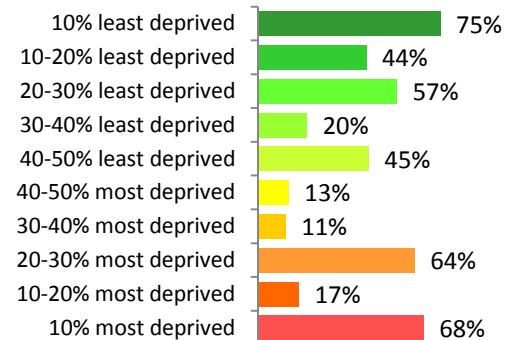
More than a quarter (27%) of Telford and Wrekin's population live in areas ranked in the 20% **most** deprived with 17% living in areas ranked in the 20% **least** deprived.



Percentage of population in each decile 2015



Percentage of areas in same decile as 2010



Adult skills sub-domain

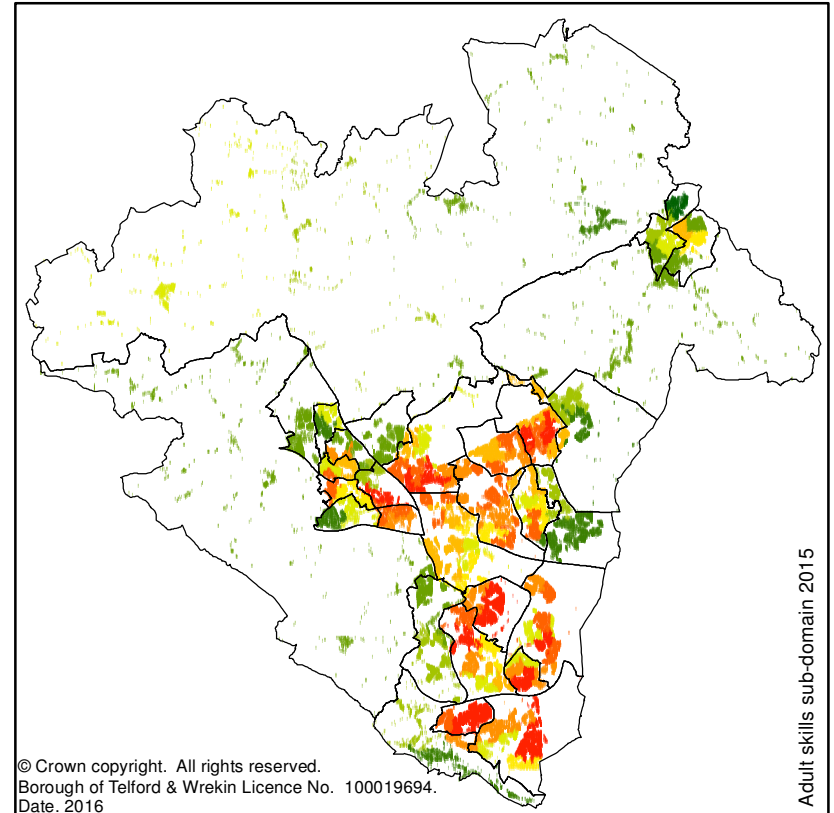
Summary

A total of 19 areas in Telford and Wrekin are ranked in the 10% most deprived for the adult skills sub-domain, these are in the wards of Woodside (x4), Brookside (x2), Malinslee & Dawley Bank (x3), Madeley & Sutton Hill (x3), Hadley & Leegomery (x2), College, The Nedge, Donnington (x2) and Dawley & Aqueduct.

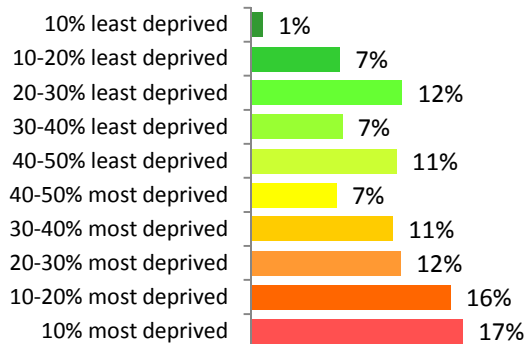
The majority of areas in the 10% **most** deprived in 2010 were still there in 2015, with half of areas previously in the 10% **least** deprived remaining there. Of the 55 areas that changed decile between 2010 and 2015, some 32 of them became **less** relatively deprived.

The picture of the most deprived areas in Telford and Wrekin in 2016 to that in 2010, with new areas appearing in Park and Haygate.

Almost a third (32%) of the population live in areas ranked in the 201% **most** deprived with just 8% living in areas ranked in the 20% **least** deprived.



Percentage of population in each decile 2015



Percentage of areas in same decile as 2010

