

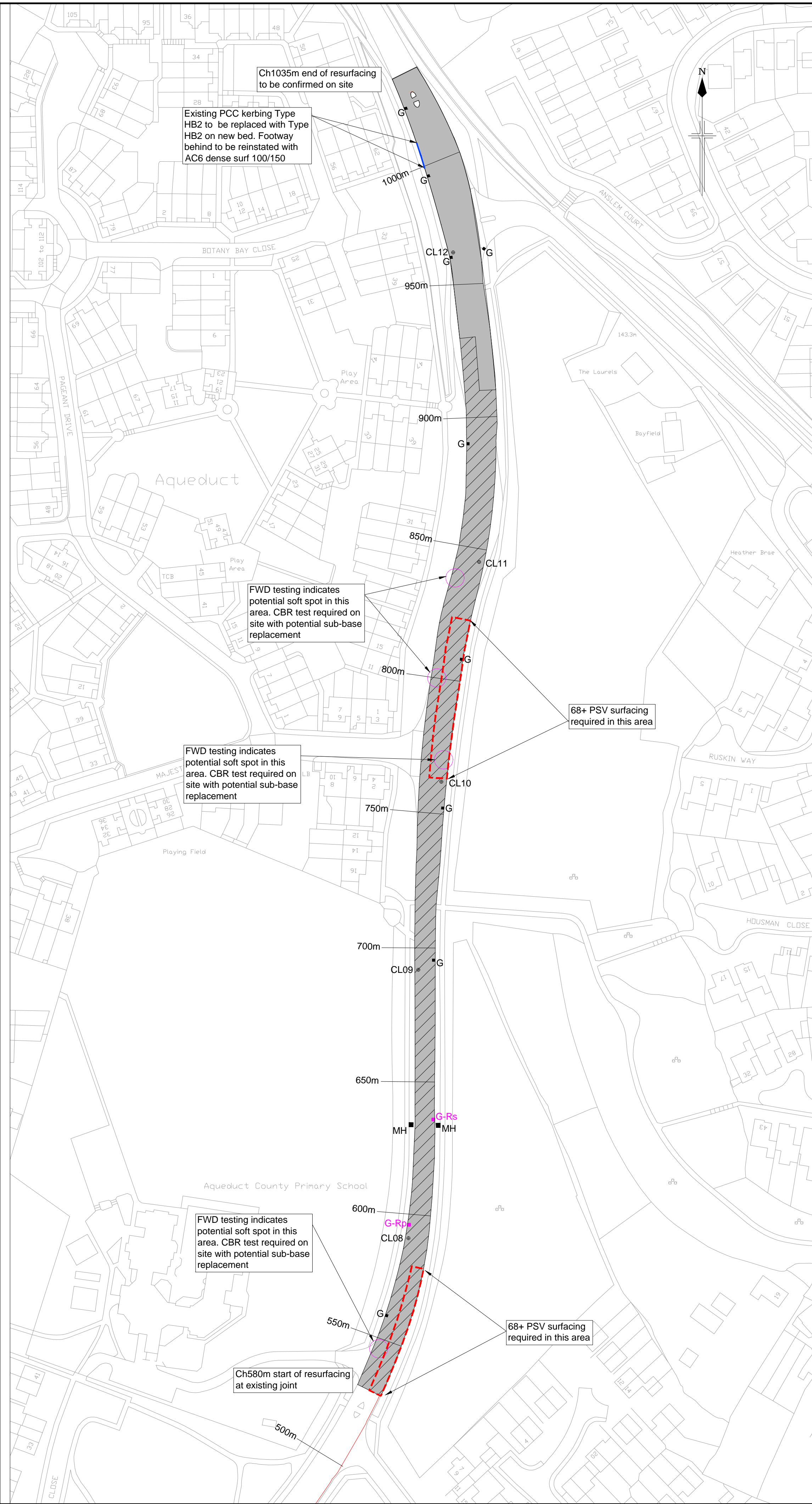
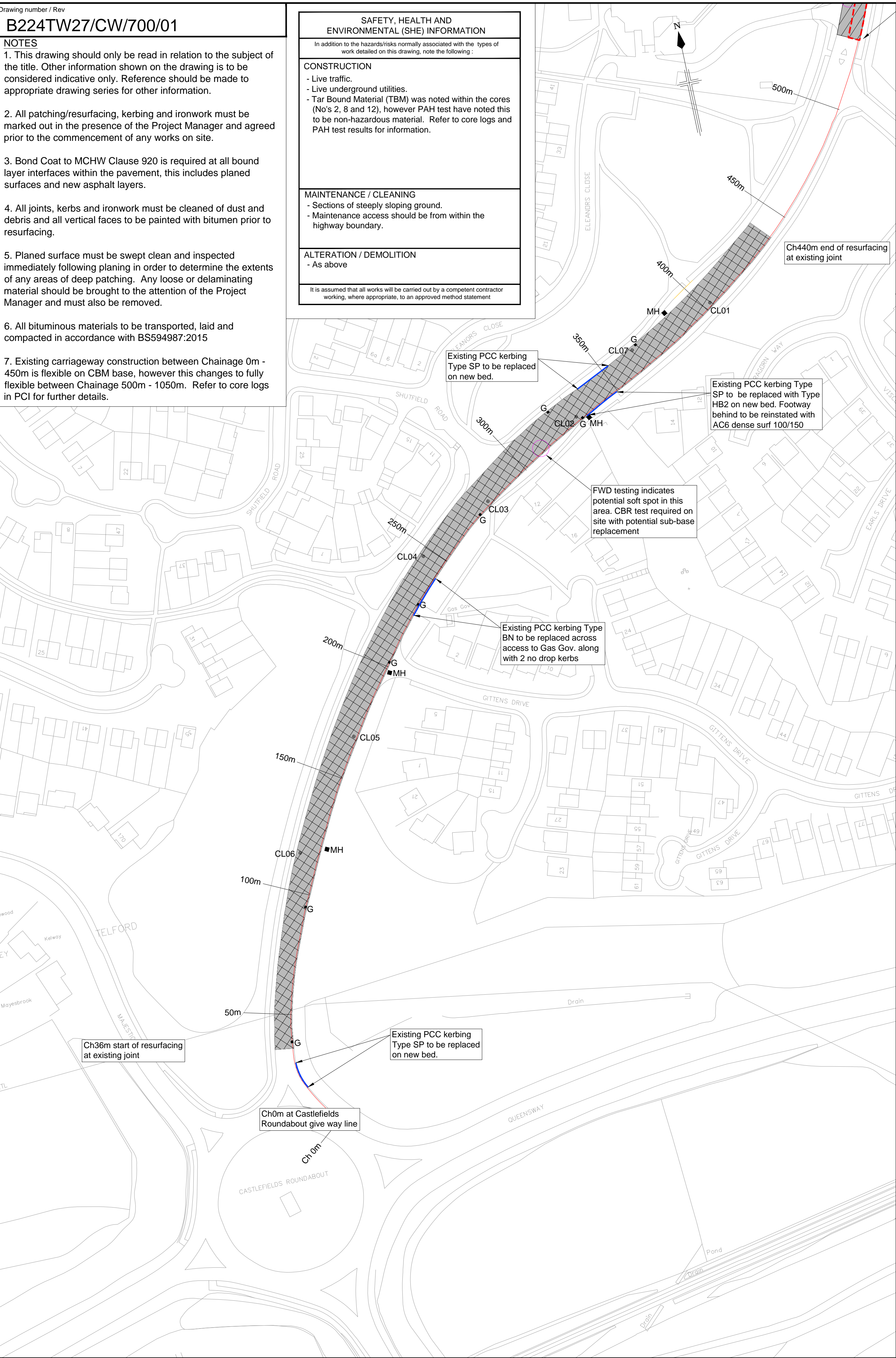
\\NTELFIL02\Projects_Progress\B224TW27 - TWC Highways 16-17\02 HM 2017-18\DWG\Detailed Design\Tender 2700-CW_Castlefields Way B4373_FOR TENDER.dwg - 22/05/2017 10:41:52 - JACOBS 700 - wilkins1

B224TW27/CW/700/01

NOTES

1. This drawing should only be read in relation to the subject of the title. Other information shown on the drawing is to be considered indicative only. Reference should be made to appropriate drawing series for other information.
2. All patching/resurfacing, kerbing and ironwork must be marked out in the presence of the Project Manager and agreed prior to the commencement of any works on site.
3. Bond Coat to MCHW Clause 920 is required at all bound layer interfaces within the pavement, this includes planned surfaces and new asphalt layers.
4. All joints, kerbs and ironwork must be cleaned of dust and debris and all vertical faces to be painted with bitumen prior to resurfacing.
5. Planned surface must be swept clean and inspected immediately following planing in order to determine the extents of any areas of deep patching. Any loose or delaminating material should be brought to the attention of the Project Manager and must also be removed.
6. All bituminous materials to be transported, laid and compacted in accordance with BS594987:2015
7. Existing carriageway construction between Chainage 0m - 450m is flexible on CBM base, however this changes to fully flexible between Chainage 500m - 1050m. Refer to core logs in PCI for further details.

SAFETY, HEALTH AND ENVIRONMENTAL (SHE) INFORMATION
In addition to the hazards/risks normally associated with the types of work detailed on this drawing, note the following :
CONSTRUCTION
- Live traffic. - Live underground utilities. - Tar Bound Material (TBM) was noted within the cores (No's 2, 8 and 12), however PAH test have noted this to be non-hazardous material. Refer to core logs and PAH test results for information.
MAINTENANCE / CLEANING
- Sections of steeply sloping ground. - Maintenance access should be from within the highway boundary.
ALTERATION / DEMOLITION
- As above
It is assumed that all works will be carried out by a competent contractor working, where appropriate, to an approved method statement



- KEY**
- Pavement Option B1**
Plane to depth of 230mm, replace with:
40mm HRA 55/10 surf 40/60 MCHW Clause 929
60mm AC20 dense base 40/60 MCHW Clause 929
130mm AC32 dense base 40/60 MCHW Clause 929
 - Pavement Option B2**
Plane 200mm, replace with:
40mm HRA 55/10 surf 40/60 60PSV
60mm AC20 dense bin 40/60 MCHW Clause 929
100mm AC32 dense base 40/60 MCHW Clause 929
 - Pavement Option B3**
Plane 200mm, replace with:
40mm HRA 55/10 surf 40/60 **68+PSV**
60mm AC20 dense bin 40/60 MCHW Clause 929
100mm AC32 dense base 40/60 MCHW Clause 929
 - Pavement Option B4**
Plane 100mm, replace with:
40mm HRA 55/10 surf 40/60 60PSV
60mm AC20 dense bin 40/60 MCHW Clause 929
 - Pavement Option Y1 (Alternative pavement option)**
Plane to depth of 230mm, replace with:
40mm HRA 55/10 surf 40/60 60PSV
190mm AC14 EME2 surf 15/25 MCHW Clause 930
 - Pavement Option Y2 (Alternative pavement option)**
Plane 200mm, replace with:
40mm HRA 55/10 surf 40/60 60PSV
160mm AC14 EME2 surf 15/25 MCHW Clause 930
 - Pavement Option Y3 (Alternative pavement option)**
Plane 200mm, replace with:
40mm HRA 55/10 surf 40/60 **68+PSV**
160mm AC14 EME2 surf 15/25 MCHW Clause 930
 - Pavement Option Y4 (Alternative pavement option)**
Plane 110mm, replace with;
40mm HRA 55/10 surf 40/60 60PSV
70mm AC14 EME2 surf 15/25 MCHW Clause 930
- G Existing Gully - all gullies and main drainage run to be cleaned and jetted
 - G-Rs Existing Gully - Grating and frame to be reset, gully and main drainage run to be cleaned and jetted
 - G-Rp Existing Gully - Grating and frame to be replaced, gully and main drainage run to be cleaned and jetted
 - MH Existing Manhole - all manholes and main drainage run to be cleaned and jetted (not all manholes shown on drawing)
 - CL Core Location - refer to core logs for further information

0	22/05/17	FOR TENDER	SW	MB	GE	ND
Rev	Rev. Date	Purpose of revision	Dwn	Ckd	Rvd	Apd

JACOBS

Jacobs House, Shrewsbury Business Park, Silka Drive, Shrewsbury SY2 6LG
Tel: +44(0)1743 264800
www.jacobs.com

Client



Jonathan Rowe, Head of Neighbourhood and Leisure Services, Darby House, Telford, TF3 4JA

Project Highway Maintenance Schemes 2017/18

Drawing Title

Castlefields Way
Pavement Drawing

Drawing Status

FOR TENDER

Scale	1:1000 @ A1, 1:2000 @ A3	DO NOT SCALE
Jacobs No.	B224TW27	

Client no.

Drawing number

B224TW27/CW/700/01

Rev

0

This drawing is not to be used in whole or part other than for the intended purpose and project as defined on this drawing. Refer to the contract for full terms and conditions.