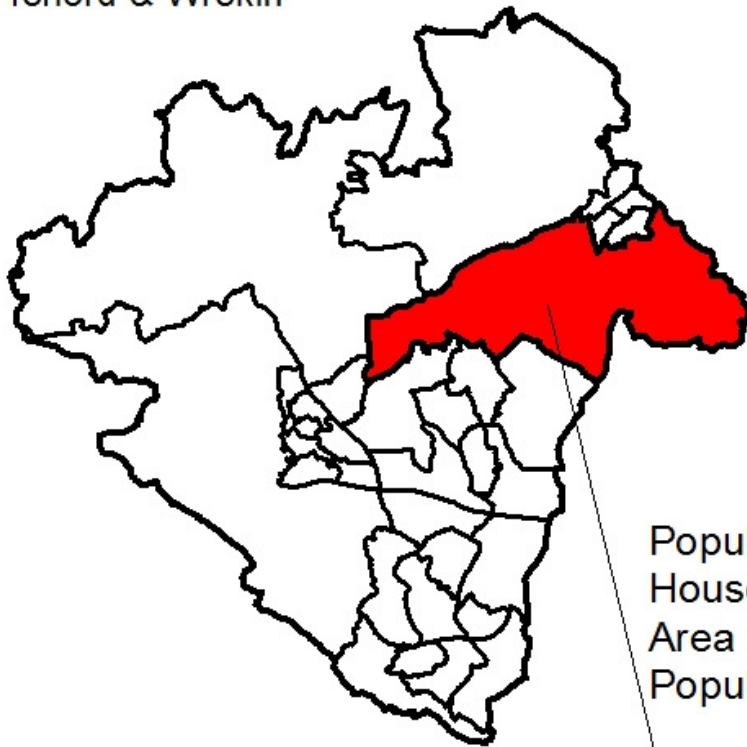
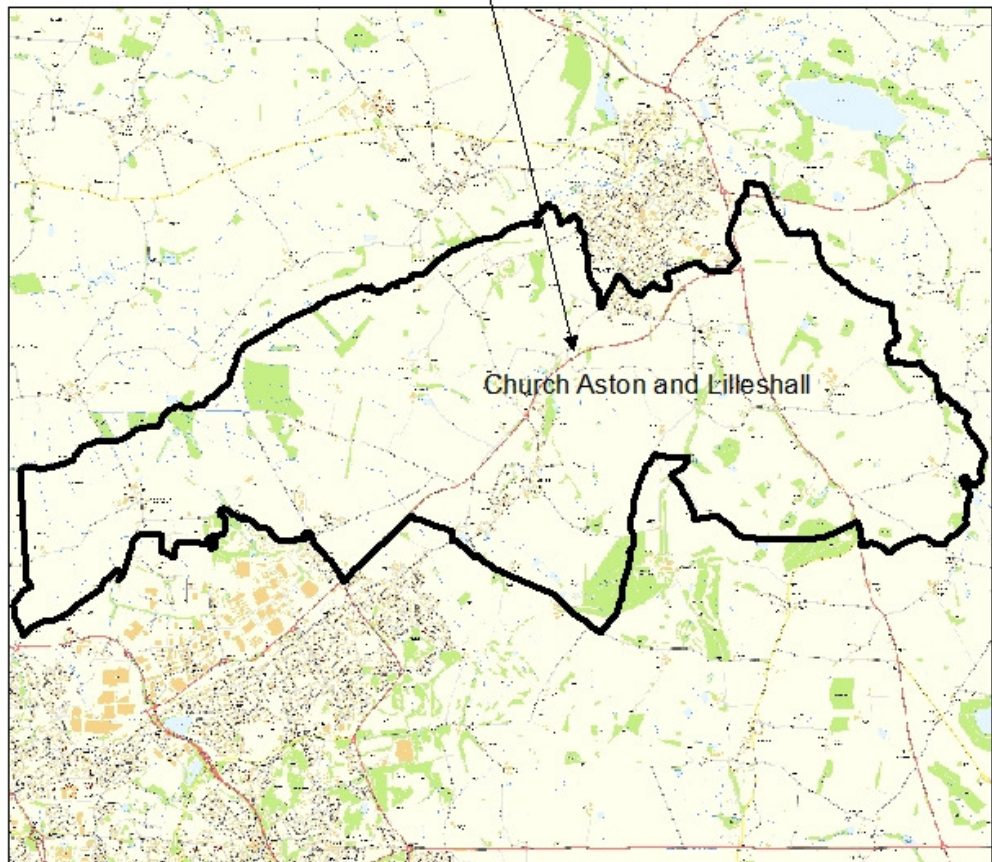


# Church Aston & Lilleshall – 2011 Census Profile

Telford & Wrekin



Population: 3,223  
Households: 1,249  
Area (hectares): 3,691.80  
Population Density: 0.9



©Crown copyright. All rights reserved. Borough of Telford & Wrekin Licence No. 100019694. Date. 2013

# 1 Population Characteristics

**Summary:**

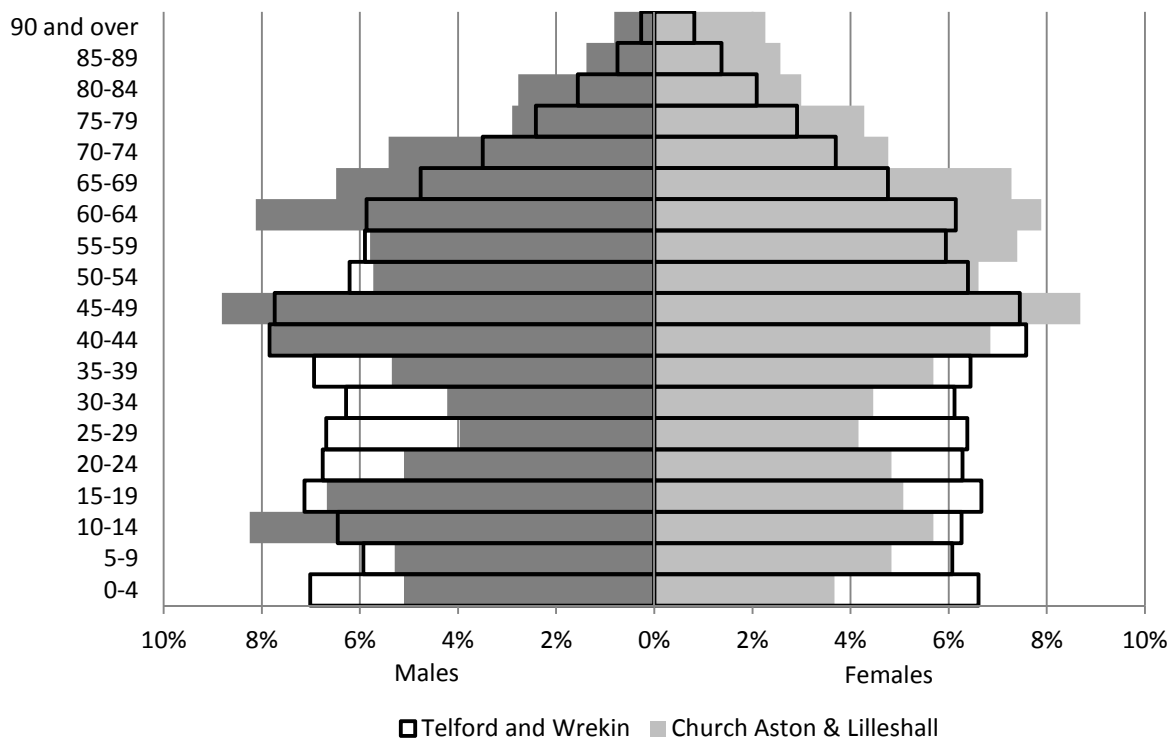
- A total of 3,223 residents live in the ward's 3,691.8 hectares. With a density of 0.87, less than one person per hectare, Church Aston & Lilleshall has the third lowest population density in the Borough.
- Church Aston & Lilleshall's population increased by 11.4% between 2001 and 2011.
- The population aged 0-24 increased by 14.5%, with a decrease from 23.3% to 21.3% for the 25-44 cohort.
- The population aged 45 and over increased by 14.2% between 2001 and 2011 and at 51.5% this age group is higher proportionally than Borough wide (40.3%).
- The ward's population is considerably older than Borough wide with a particularly large proportion of residents aged 45-49.

**Table 1: Age structure**

	Church Aston & Lilleshall				Telford and Wrekin 2011 %
	2011		2001		
	People	%	People	%	
0-4	141	4.4%	117	4.0%	6.8%
5-9	163	5.1%	152	5.3%	6.0%
10-15	269	8.3%	235	8.1%	7.7%
16-24	304	9.4%	262	9.1%	12.1%
25-44	685	21.3%	673	23.3%	27.1%
45-64	952	29.5%	896	31.0%	25.8%
65-84	595	18.5%	490	16.9%	12.8%
85+	114	3.5%	69	2.4%	1.6%
<i>All usual residents</i>	<i>3,223</i>	<i>100.0%</i>	<i>2,894</i>	<i>100.0%</i>	<i>100.0%</i>

Source: Office for National Statistics 2001 and 2011 Census (KS102)

**Figure 1: Population pyramid**



Source: Office for National Statistics 2011 Census (PP05 and PP06)

## 2 Diversity

### Summary:

- The BME population of Church Aston & Lilleshall increased from 3.0% to 5.1% between 2001 and 2011 but it is still half the Borough rate (10.6%).
- From a small base, the Asian community in the ward has nearly tripled since 2001 and at 2.4% is now the largest BME group in the ward.
- Even though the proportion of Christians decreased from 84.1% to 70.7%, it still remained the largest religious group in the ward, above the Borough wide rate of 61.7%.
- For the first time in a census, people were asked for their main language. Just 1.6% of the population have a main language other than English, less than half the proportion Borough wide (4.1%).

**Table 2: Ethnic background**

	Church Aston & Lilleshall				Telford and Wrekin 2011 %
	2011		2001		
	People	%	People	%	
White British	3,058	94.9%	2,819	97.0%	89.5%
Other White	58	1.8%	47	1.6%	3.2%
Mixed/multiple	23	0.7%	3	0.1%	1.8%
Asian/Asian British	77	2.4%	28	1.0%	4.2%
Black/African/Caribbean/Black British	6	0.2%	3	0.1%	1.1%
Other ethnic group	1	0.0%	7	0.2%	0.3%
<b>All BME</b>	<b>165</b>	<b>5.1%</b>	<b>88</b>	<b>3.0%</b>	<b>10.6%</b>
<i>All usual residents</i>	<i>3,223</i>	<i>100.0%</i>	<i>2,907</i>	<i>100.0%</i>	<i>100.0%</i>

Source: Office for National Statistics 2001 and 2011 Census (KS201)

**Table 3: Religion**

	Church Aston & Lilleshall				Telford and Wrekin 2011 %
	2011		2001		
	People	%	People	%	
Buddhist	6	0.2%	9	0.3%	0.2%
Christian	2,280	70.7%	2,443	84.1%	61.7%
Hindu	6	0.2%	0	0.0%	0.5%
Jewish	0	0.0%	0	0.0%	0.0%
Muslim	18	0.6%	0	0.0%	1.8%
Sikh	39	1.2%	11	0.4%	1.3%
Other religion	4	0.1%	0	0.0%	0.4%
No religion	618	19.2%	282	9.7%	27.4%
Religion not stated	252	7.8%	161	5.5%	6.6%
<b>Total with religion</b>	<b>2,353</b>	<b>73.0%</b>	<b>2,464</b>	<b>84.8%</b>	
<i>All usual residents</i>	<i>3,223</i>	<i>100.0%</i>	<i>2,906</i>	<i>100.0%</i>	<i>100.0%</i>

Source: Office for National Statistics 2001 Census (KS007) and 2011 Census (KS209)

## Church Aston & Lilleshall - 2011 Census Profile

**Table 4: English language proficiency**

		Church Aston & Lilleshall 2011		Telford and Wrekin 2011
		People	%	%
Main language is English		3,093	98.4%	95.9%
Main language is not English	Speaks English very well	19	0.6%	1.4%
	Speaks English well	13	0.4%	1.7%
	Does not speak English well	18	0.6%	0.9%
	Does not speak English at all	1	0.0%	0.2%
<i>All people aged 3 and over</i>		<i>3,144</i>	<i>100.0%</i>	<i>100.0%</i>

*Source: Office for National Statistics 2011 Census (QS205)*

### 3 Household and family characteristics

**Summary:**

- Even the proportion of households that were married couples with no children decreased from 21.9% to 19.5%, it is still above the Borough wide rate of 13.8% and the third highest rate of any ward.
- The proportion of households without access to a car or van has decreased from 10.3% to 7.4% between 2011 and 2001. At 16.2%, the number of households in Church Aston & Lilleshall with access to 3 or more cars or vans is nearly twice the Borough rate of 8.4%.
- More than half of households in Church Aston & Lilleshall (52.2%) are not deprived in any dimension, a large increase since 2001 and above the Borough wide rate of 41.7%.
- Just 2.2% of households in the ward were deprived in three or more dimensions, less than half the 5.9% Borough wide.

**Table 5: Household structure**

			Church Aston & Lilleshall				Telford and Wrekin 2011
			2011		2001		%
			H Holds	%	H Holds	%	
One person	Aged 65 and over		147	11.8%	161	14.1%	10.7%
	Other		108	8.6%	85	7.4%	14.5%
One family and no others	All aged 65 and over		162	13.0%	135	11.8%	7.6%
	Married couple households (including same-sex civil partnership couple households)	No children	243	19.5%	251	21.9%	13.8%
		With dependent children	232	18.6%	243	21.2%	16.4%
		All children non-dependent	87	7.0%	103	9.0%	6.1%
	Cohabiting couple households (including same-sex cohabiting couple households)	No children	40	3.2%	38	3.3%	5.7%
		With dependent children	54	4.3%	22	1.9%	5.6%
		All children non-dependent	6	0.5%	3	0.3%	0.6%
	Lone parent households	With dependent children	46	3.7%	24	2.1%	8.1%
All children non-dependent		40	3.2%	25	2.2%	3.6%	
Other households	With dependent children		33	2.6%	24	2.1%	2.9%
	All full-time student		7	0.6%	0	0.0%	0.3%
	All aged 65 and over		8	0.6%	6	0.5%	0.2%
	Other		36	2.9%	25	2.2%	%
<i>All households</i>			<i>1,249</i>	<i>100.0%</i>	<i>1,145</i>	<i>100.0%</i>	<i>100.0%</i>

*Source: Office for National Statistics 2001 Census (S053) and 2011 Census (QS113)*

## Church Aston & Lilleshall – 2011 Census Profile

**Table 6: Households access to cars or vans**

	Church Aston & Lilleshall				Telford and Wrekin 2011 %
	2011		2001		
	H Holds	%	H Holds	%	
No car or van	92	7.4%	120	10.3%	20.6%
1 car or van	448	35.9%	470	40.4%	43.1%
2 cars or vans	507	40.6%	429	36.9%	27.9%
3 cars or vans	153	12.2%	106	9.1%	6.3%
4 or more cars or vans	49	3.9%	38	3.3%	2.1%
<i>All households</i>	<i>1,249</i>	<i>100.0%</i>	<i>1,163</i>	<i>100.0%</i>	<i>100.0%</i>
<b>Sum of all cars or vans in the area</b>	<b>2,142</b>	<b>n/a</b>	<b>1,822</b>	<b>n/a</b>	<b>84,671</b>
<b>Average cars or vans per household</b>	<b>1.71</b>	<b>n/a</b>	<b>1.57</b>	<b>n/a</b>	<b>1.27</b>

*Source: Office for National Statistics 2001 Census (UV62) and 2011 Census (KS404)*

**Table 7: Household deprivation**

	Church Aston & Lilleshall				Telford and Wrekin 2011 %
	2011		2001		
	H Holds	%	H Holds	%	
Household not deprived in any dimension	652	52.2%	437	37.7%	41.7%
Household is deprived in 1 dimension	399	31.9%	398	34.3%	32.1%
Household is deprived in 2 dimensions	171	13.7%	258	22.2%	20.3%
Household is deprived in 3 dimensions	23	1.8%	58	5.0%	5.5%
Household is deprived in 4 dimensions	4	0.3%	9	0.8%	0.4%
<b>Total deprived in at least one dimension</b>	<b>597</b>	<b>47.8%</b>	<b>723</b>	<b>62.3%</b>	<b>58.3%</b>
<i>All households</i>	<i>1,249</i>	<i>100.0%</i>	<i>1,160</i>	<i>100.0%</i>	<i>100.0%</i>

*Source: Office for National Statistics 2001 Census (UV67) and 2011 Census (QS119)*

## 4 Housing

### Summary:

- The total number of household spaces in Church Aston & Lilleshall increased by 76 between 2001 and 2011, accounting for 2.4% of the 3,181 growth seen Borough wide.
- Half (50.7%) of households in the ward live in detached houses or bungalows, considerably higher than the 30.8% Borough wide.
- Four out of five (80.1%) households in Church Aston & Lilleshall own their own home, either outright or through a mortgage or loan, higher than the 63.7% seen across the Borough.
- Some 27 households in the ward (2.2%) still mistakenly believe they rent their home from the Council, a slight increase from 22 in 2001.

**Table 8: Housing stock**

	Church Aston & Lilleshall				Telford and Wrekin 2011 %
	2011		2001		
	H Hold spaces	%	H Hold spaces	%	
Occupied household space	1,249	95.7%	1,160	94.4%	96.9%
Unoccupied household space	56	4.3%	69	5.6%	3.1%
<i>All household spaces</i>	<i>1,305</i>	<i>100.0%</i>	<i>1,229</i>	<i>100.0%</i>	<i>100.0%</i>

*Source: Office for National Statistics 2001 Census (UV53) and 2011 Census (QS417)*

## Church Aston & Lilleshall - 2011 Census Profile

**Table 9: Accommodation type**

		Church Aston & Lilleshall				Telford and Wrekin 2011 %
		2011		2001		
		H Holds	%	H Holds	%	
House or bungalow	Detached	633	50.7%	606	49.3%	30.8%
	Semi-detached	477	38.2%	481	39.1%	36.7%
	Terrace (including end terrace)	70	5.6%	56	4.6%	22.2%
Flat, maisonette or apartment	Purpose built	34	2.7%	57	4.6%	8.6%
	Part of a converted or shared house (includes bed-sits)	24	1.9%	20	1.6%	0.8%
	In a commercial building	5	0.4%	0	0.0%	0.5%
Caravan or other mobile or temporary structure		6	0.5%	4	0.3%	0.4%
In a shared dwelling		0	0.0%	5	0.4%	0.0%
<i>All households</i>		<i>1,249</i>	<i>100.0%</i>	<i>1,229</i>	<i>100.0%</i>	<i>100.0%</i>

*Source: Office for National Statistics 2001 Census (UV056) and 2011 Census (QS402)*

**Table 10: Tenure**

		Church Aston & Lilleshall				Telford and Wrekin 2011 %
		2011		2001		
		H Holds	%	H Holds	%	
Owned	Owns outright	534	42.8%	437	37.6%	27.2%
	Owns with a mortgage or loan	466	37.3%	447	38.5%	36.5%
Shared ownership		2	0.2%	3	0.3%	0.4%
Social rented	Rented from Council (Local Authority)	27	2.2%	22	1.9%	8.1%
	Other social rented	63	5.0%	87	7.5%	11.6%
Private rented	Private landlord or letting agency	105	8.4%	61	5.3%	13.6%
	Employer of a household member	13	1.0%	39	3.4%	0.2%
	Relative or friend of household member	10	0.8%	4	0.3%	0.9%
	Other	7	0.6%	26	2.2%	0.2%
Lives rent free		22	1.8%	35	3.0%	1.2%
<i>All households</i>		<i>1,249</i>	<i>100.0%</i>	<i>1,161</i>	<i>100.0%</i>	<i>100.0%</i>

*Source: Office for National Statistics 2001 Census (UV63) and 2011 Census (QS405)*

## 5 Employment and economy

### Summary:

- The proportion of economically active residents aged 16-74 in Church Aston & Lilleshall increased between 2001 and 2011 from 66.4% to 69.4%, the same as Borough wide.
- Even though the unemployment rate in the ward increased from 1.9% to 2.5%, it is still nearly half the Borough wide rate of 4.7%.
- Just 4.0% of residents aged 16-74 in the ward have never worked, lower than the Borough figure (7.2%).
- The largest occupation in the ward is 'professional occupations' at 18.7% higher than the Borough rate and an increase of more than 100 people since 2001.
- More than a third of all Household Reference Persons in the ward (33.7%) are classed as social grade C1- Supervisory, clerical, junior managerial/administrative/professional, higher than the 28.3% Borough wide in this group.
- Some 73.8% of residents drive a car or van to work, an increase of 24.1% since 2001 and above the Borough rate of 70%.

## Church Aston & Lilleshall - 2011 Census Profile

**Table 11: Economic Activity 16-74 in Church Aston & Lilleshall**

		Church Aston & Lilleshall				Telford and Wrekin
		2011		2001		2011
		People	%	People	%	%
Economically active	Full time employees	864	37.1%	862	40.4%	41.4%
	Part time employees	375	16.1%	273	12.8%	13.5%
	Self employed	249	10.7%	202	9.5%	7.0%
	Unemployed	58	2.5%	41	1.9%	4.7%
	Full time students	68	2.9%	41	1.9%	2.8%
	<b>Total economically active</b>	<b>1,614</b>	<b>69.4%</b>	<b>1,419</b>	<b>66.4%</b>	<b>69.4%</b>
Economically inactive	Retired	448	19.3%	386	18.1%	13.7%
	Students	109	4.7%	75	3.5%	5.1%
	Looking after home or family	86	3.7%	125	5.9%	4.8%
	Long term sick or disabled	40	1.7%	87	4.1%	4.9%
	Other	30	1.3%	44	2.1%	2.0%
	<b>Total economically inactive</b>	<b>713</b>	<b>30.6%</b>	<b>717</b>	<b>33.6%</b>	<b>30.5%</b>
<i>All usual residents aged 16-74</i>		<i>2,327</i>	<i>100.0%</i>	<i>2,136</i>	<i>100.0%</i>	<i>100.0%</i>

*Source: Office for National Statistics 2001 Census (S021) and 2011 Census (QS601)*

**Table 12: Year last worked**

	Church Aston & Lilleshall				Telford and Wrekin	
	2011		2001		2011	
	People	%	People	%	%	
In employment	1,544	66.4%	1,368	64.1%	64.1%	
Last worked in 2011 (2001)	38	1.6%	65	3.0%	1.3%	
Last worked in 2010 (2000)	108	4.6%	100	4.7%	4.7%	
Last worked in 2009 (1999)	63	2.7%	61	2.9%	2.9%	
Last worked in 2008 (1998)	47	2.0%	42	2.0%	2.2%	
Last worked in 2007 (1997)	47	2.0%	31	1.5%	1.6%	
Last worked in 2006 (1996)	40	1.7%	35	1.6%	1.5%	
Last worked in 2001 – 2005 (1991-1995)	149	6.4%	150	7.0%	5.8%	
Last worked before 2001 (1991)	198	8.5%	210	9.8%	8.6%	
Never worked	93	4.0%	72	3.4%	7.2%	
<b>Total not in employment</b>	<b>783</b>	<b>33.6%</b>	<b>766</b>	<b>35.9%</b>	<b>35.9%</b>	
<i>All usual residents aged 16-74</i>		<i>2,327</i>	<i>100.0%</i>	<i>2,134</i>	<i>100.0%</i>	<i>100.0%</i>

*Source: Office for National Statistics 2001 Census (UV027) and 2011 Census (QS612)*

**Table 13: Occupation**

	Church Aston & Lilleshall				Telford and Wrekin	
	2011		2001		2011	
	People	%	People	%	%	
1. Managers, directors and senior officials	231	15.0%	224	16.4%	9.5%	
2. Professional occupations	289	18.7%	180	13.2%	13.9%	
3. Associate professional and technical occupations	212	13.7%	233	17.0%	11.3%	
4. Administrative and secretarial occupations	182	11.8%	192	14.0%	11.5%	
5. Skilled trades occupations	162	10.5%	144	10.5%	11.9%	
6. Caring, leisure and other service occupations	123	8.0%	104	7.6%	9.3%	
7. Sales and customer service occupations	91	5.9%	70	5.1%	8.6%	
8. Process, plant and machine operatives	113	7.3%	99	7.2%	10.8%	
9. Elementary occupations	141	9.1%	122	8.9%	13.1%	
<i>All usual residents aged 16-74 in employment</i>		<i>1,544</i>	<i>100.0%</i>	<i>1,368</i>	<i>100.0%</i>	<i>100.0%</i>

*Source: Office for National Statistics 2001 Census (UV030) and 2011 Census (QS606)*

## Church Aston & Lilleshall - 2011 Census Profile

**Table 14: Approximated social grade**

	Church Aston & Lilleshall 2011		Telford and Wrekin 2011
	People	%	%
AB. Higher and intermediate managerial/administrative/professional	271	32.0%	18.0%
C1. Supervisory, clerical, junior managerial/administrative/professional	286	33.7%	28.3%
C2. Skilled manual workers	160	18.9%	22.9%
DE Semi-skilled and unskilled manual workers / On state benefit, unemployed, lowest grade workers	131	15.4%	30.8%
<i>All Household Reference Persons aged 16 – 64</i>	<i>848</i>	<i>100.0%</i>	<i>100.0%</i>

*Source: Office for National Statistics 2011 Census (QS611)*

**Table 15: Means of Travel to Work**

	Church Aston & Lilleshall				Telford and Wrekin 2011
	2011		2001		% 2011
	People	%	People	%	
Working at or from home	127	8.2%	169	12.4%	4.0%
Train, Underground, metro, light rail, tram	23	1.5%	18	1.3%	1.5%
Bus, minibus or coach	23	1.5%	44	3.2%	4.0%
Taxi	1	0.1%	3	0.2%	1.1%
Motorcycle, scooter or moped	14	0.9%	9	0.7%	0.7%
Driving a car or van	1,139	73.8%	918	67.2%	70.0%
Passenger in a car or van	87	5.6%	95	7.0%	8.0%
Bicycle	23	1.5%	28	2.0%	2.1%
On foot	100	6.5%	72	5.3%	8.0%
Other	7	0.5%	10	0.7%	0.5%
<i>All usual residents aged 16-74 in employment</i>	<i>1,544</i>	<i>100.0%</i>	<i>1,366</i>	<i>100.0%</i>	<i>100.0%</i>

*Source: Office for National Statistics 2001 Census (S119) and 2011 Census (QS701)*

**Table 16: Highest level of qualifications**

	Church Aston & Lilleshall				Telford and Wrekin 2011
	2011		2001*		% 2011
	People	%	People	%	
No qualifications	504	19.0%	49.3	23.0%	24.6%
Level 1	320	21.1%	340	15.9%	15.1%
Level 2	438	16.5%	474	22.1%	17.9%
Apprenticeship	97	3.7%			3.3%
Level 3	296	11.2%	168	7.9%	13.0%
Level 4 and above	895	33.8%	516	24.1%	20.9%
Other: Vocational/work-related qualifications, foreign qualifications (level unknown)	100	3.8%	149	7.0%	5.1%
<i>All people aged 16 and over*</i>	<i>2,650</i>	<i>100.0%</i>	<i>2,140</i>	<i>100.0%</i>	<i>100.0%</i>

\*Data for 2001 is for aged 16-74 only so is not directly comparable to 2011.

*Source: Office for National Statistics 2001 Census (UV024) and 2011 Census (KS501)*



## 6 Health and care

### Summary:

- Almost half (47.7%) of Church Aston & Lilleshall residents reported very good health, slightly higher than the 45.9% Borough wide. Just 1.1% of ward residents reported very bad health.
- Some 17.6% of ward residents felt their day-to-day activities were limited by long-term health problem or disability, slightly lower than the 18.6% seen across the Borough.
- A total of 397 people in Church Aston & Lilleshall, some 12.3% of residents, provided unpaid care, higher than the 10.8% seen Borough-wide.

**Table 17: General health**

	Church Aston & Lilleshall 2011		Telford and Wrekin 2011
	People	%	%
Very good health	1,538	47.7%	45.9%
Good health	1099	34.1%	34.3%
Fair health	424	13.2%	13.6%
Bad health	125	3.9%	4.8%
Very bad health	37	1.1%	1.4%
<i>All usual residents</i>	<i>3,223</i>	<i>100.0%</i>	<i>100.0%</i>

Source: Office for National Statistics 2011 Census (KS301)

**Table 18: Long-term health problem or disability**

	Church Aston & Lilleshall				Telford and Wrekin 2011
	2011		2001		%
	People	%	People	%	
Day-to-day activities limited a lot	263	8.2%	558	19.2%	9.0%
Day-to-day activities limited a little	302	9.4%			9.6%
Day-to-day activities not limited	2,657	82.5%	2,354	80.8%	81.4%
<i>All usual residents</i>	<i>3,223</i>	<i>100.0%</i>	<i>2,912</i>	<i>100.0%</i>	<i>100.0%</i>

Source: Office for National Statistics 2001 Census (UV022) and 2011 Census (KS301)

**Table 19: Provision of care**

	Church Aston & Lilleshall				Telford and Wrekin 2011	
	2011		2001		%	
	People	%	People	%		
Provides no care	2,826	87.7%	2,472	87.8%	89.2%	
Unpaid care	1-19 hours a week	262	8.1%	241	8.6%	6.2%
	20-49 hours a week	47	1.5%	35	1.2%	1.6%
	50 or more hours a week	88	2.7%	66	2.3%	3.0%
<b>Total providing care</b>	<b>397</b>	<b>12.3%</b>	<b>342</b>	<b>12.2%</b>	<b>10.8%</b>	
<i>All usual residents</i>	<i>3,223</i>	<i>100.0%</i>	<i>2,814</i>	<i>100.0%</i>	<i>100.0%</i>	

Source: Office for National Statistics 2001 Census (UV021) and 2011 Census (KS301)

## Notes and definitions

### Household deprivation

The 2011 Census categorises households on their deprivation across four dimensions

- Employment – Any member of the household aged 16-74 who is not a full-time student is either unemployed or permanently sick
- Education – No member of the household aged 16 to pensionable age has at least 5 GCSEs (grade A-C) or equivalent AND no member of the household aged 16-18 is in full-time education
- Health and disability – Any member of the household has general health 'not good' in the year before census or has a limiting long term illness
- Housing – The household's accommodation is either overcrowded (occupancy indicator is -1 or less) OR is in a shared dwelling OR does not have sole use of bath/shower and toilet OR has no central heating.

### Household Reference Persons

HRPs provide an individual person within a household to act as a reference point for producing further derived statistics and for characterising a whole household according to characteristics of the chosen reference person.

- For a person living alone, it follows that this person is the HRP.
- If a household contains only one family, then the HRP is the same as the Family Reference Person (FRP).
- If there is more than one family in a household, the HRP is chosen from among the FRPs using the same criteria used to choose the FRP i.e selected on the basis of their economic activity, in the priority order.
  - Economically active, employed, full-time, non-student
  - Economically active, employed, full-time student
  - Economically active, employed, part-time, non-student
  - Economically active, employed, part-time, student
  - Economically active, unemployed, non-student
  - Economically active, unemployed, student
  - Economically inactive, retired
  - Economically inactive, other
- If some are all FRPs have the same economic activity, the HRP is the eldest of the FRPs, if some or all are the same age, the HRP is the first of the FRPs from the order in which they were listed on the questionnaire.
- If a household is made up entirely of any combination of ungrouped individuals and other related families, the HRP is chosen from among all people in the household, using the same criteria used to choose between FRPs.
- Students at their non term-time address and short-term migrants cannot be HRP.

### Dependent children

A dependent child is a person aged 0-15 in a household (whether or not in a family) or aged 16-18 in full-time education and living in a family with his or her parent(s). It does not include any children who have a spouse, partner or child living in the household.