

Annual Monitoring Report 2017

Contents

1 Introduction	4
2 Housing	8
2.1 Completions and commitments	8
2.2 Strategic Site Update	11
2.3 Housing Land Provision 2017	11
2.4 Housing Trajectory - updated, end of March 2017	12
3 Economic Development	16
3.1 Employment	16
3.2 Employment Land	17
3.3 Retail and Town Centres	18
4 Travel and Accessibility	22
5 Water and Flood Risk	26
6 Biodiversity	28
7 Green Spaces	34
8 Waste and Minerals	38
8.1 Waste	38
8.2 Minerals	38
9 Heritage	42
10 Renewable Energy and Climate Change	44
11 Development Plan Documents	46
11.1 Local Development Scheme Milestones	46
12 Duty to Cooperate	48
13 Core Strategy	50
14 Central Telford Area Action Plan	54
15 Infrastructure Delivery Planning	56
16 Neighbourhood Planning	58
17 Appendix	60

Contents

1 Introduction

1 Introduction

1 Introduction

1.0.1 The Annual Monitoring Report shows the performance of planning policy within the Borough over the last year and if necessary recommends changes. The data used for the report comes from the financial year of 1st April 2016 - 31st March 2017 unless otherwise noted.

1.0.2 Where possible, this report sets out the data as the urban areas of Telford, Newport and rural area, as defined on the Map of the Borough.

1.0.3 Local planning authorities are required to make their Authority's Monitoring Report publicly available under Regulation 34 of the Town and Country Planning (Local Planning) (England) Regulations 2012. Telford & Wrekin Council is committed to publishing its development monitoring report annually.

1.0.4 The UK Government's Planning Practice Guidance also advises that local planning authorities publish information at least annually that shows progress with Local Plan preparation (sections 11). The AMR reports on activity relating to the duty to cooperate (section 12) and shows how the implementation of policies in the Local Plan is progressing (sections 2 to 10). It should also report on any neighbourhood development orders or neighbourhood development plans (section 16).

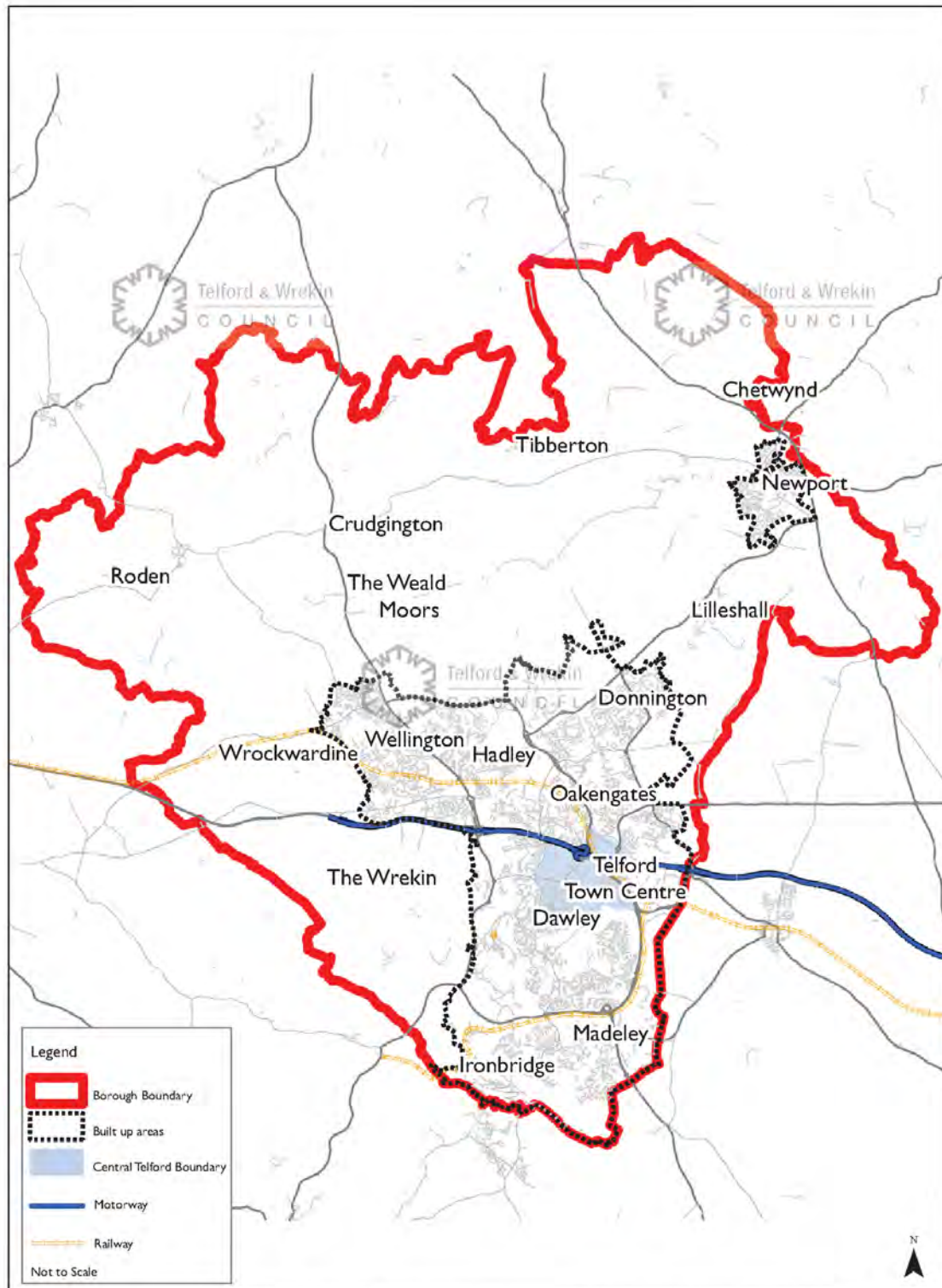
1.0.5 The Telford & Wrekin Core Strategy covers the period up to 2016. For the period beyond 2016, the Telford & Wrekin Local Plan (TWLP) will include the planning policies to deliver a spatial development strategy based on a long-term spatial vision for the Borough up to 2031. The TWLP will also set out the Council's priorities and policies for development and will contain planning policies which will manage where homes, businesses, shops and green spaces will be located within the borough.

1.0.6 For further information on TWLP and planning policy for Telford & Wrekin, please see the website via the following link - www.telford.gov.uk/localplan

1 Introduction

1

Map 1 Map of the Borough



Reproduced from the Ordnance Survey mapping with the permission of the Controller of Her Majesty's Stationery Office © Crown copyright. Unauthorised reproduction infringes Crown copyright and may lead to prosecution or civil proceedings Borough of Telford & Wrekin Licence No. 100019694. Date: 2013
 Drawn by Richard Overy Location r:\AMR\AMR2012\TownBoundary.mxd

1 Introduction

2 Housing

2 Housing

2 Housing

2.0.1 This section provides information related to housing development, with 2016/17 completions and existing commitments.

2.1 Completions and commitments

2.1.1 Table 2.1 shows the rate of net completions over the period since 2006. As can be seen, the second half of the period continues to see significant numbers of new dwellings being delivered.

Table 2.1 Housing Completions 2006-17

	2006/7	2007/8	2008/9	2009/10	2010/11	2011/12	2012/13	2013/14	2014/15	2015/16	2016/17	Total
Telford	365	246	407	468	511	622	591	795	947	1025	943	6920
Newport	50	61	36	3	20	82	13	39	87	166	168	725
Rural Area	37	56	19	12	20	16	3	8	40	64	37	312
Total	452	363	462	483	551	720	607	842	1074	1255	1148	7957

2.1.2 In the year 2016/17, completions, in gross terms, totalled 1,221 dwellings. This figure is reduced to a net completion of 1,148 dwellings, allowing for 73 units lost through demolition or conversion. This represents a significant number of units lost through demolition or conversion, predominantly linked to the remodelling of former housing sites brought forward by Wrekin Housing Trust. A programme of renewal and redevelopment is likely to continue in the short term. Such losses mask, to some extent, the continued high level of housing delivery.

2.1.3 As at March 2017, Table 2.2 shows dwellings under construction totalled 799 dwellings, with a continuing large number of these (78%) being focused on Telford built-up area. On this basis, it is not unreasonable to suggest that completions will continue to exceed the housing target for the borough (864 dwellings per year) in the coming year (2017/18).

Table 2.2 Dwellings with permission (not yet completed), at March 2017

	Under construction	Not started
Telford	621	7,184
Newport	100	332
Rural	78	869
Borough total	799	8,385

2.1.4 The total number of units not yet started at March 2017 remains at a very healthy level (8,465 dwellings), bolstered by the continued build out of the strategic sites (Lawley; Lightmoor; and Telford Millennium Community, Ketley), as well as wide range of larger and smaller sites distributed across the built-up areas of the borough. It can be seen that supply continues to be dominated by sites in Telford, some 86% of the total. This is broadly consistent with the observed distribution of housing and households across the borough. Consequently, given current market conditions, local housing delivery is likely to remain robust in the short to medium term at least.

2 Housing

2

2.1.5 The Council also monitors the delivery of affordable housing on an annual basis. Table 2.3 shows that the amount of affordable homes delivered within the borough continues to make a positive contribution towards addressing local housing need for those unable to access open market housing. The amount of affordable housing delivered with 2016/17 was 26% of the overall net completions for the year. These figures exclude tenure switches, for example through mortgage rescue.

Table 2.3 Affordable Homes Provided, 2006-2017

	Social Rent Homes Provided	Intermediate Homes Provided	Total Affordable Homes Provided
2006/7	12	9	21
2007/8	73	0	73
2008/9	139	0	139
2009/10	170	14	184
2010/11	137	65	202
2011/12	195	80	275
2012/13	180	103	211
2013/14	265	54	319
2014/15	427		427
2015/16	287	56	343
2016/17			301
2006-17	n/d	n/d	2,495

2.1.6 Table 2.4 shows the development status of dwellings completed during the period 2006-2017.

Table 2.4 Residential Completions by Previously Developed Land (PDL) type

		2006/7	2007/8	2008/9	2009/10	2010/11	2011/12	2012/13	2013/14	2014/15	2015/16	2016/17
Green Field	No.	51	65	22	50	81	184	269	555	588	562	564
	(%)	13	20	5	10	15	27	44	66	55	45	49
Previously Developed	No.	327	255	410	433	470	500	338	287	486	693	582
	(%)	87	80	95	90	85	73	56	34	45	55	51

2.1.7 There is also a legacy of additional sites that were granted permission under the New Towns Act 1981, otherwise known as 'section 7(1) sites'. These are long-standing sites, with indicative capacities, that in theory could come forward for residential development at any time without the need for planning permission. The full schedule of remaining sites within this category are set out in the Table 2.5.

2 Housing

Table 2.5 Residential Section 7(1) Consented Sites

Application Number	Address	Estimated Yield	Status at end of March 2017
T91/0242	The Hem (Nedge)	250	Part of proposed housing allocation in TWLP
T74/0082a	Colliers Way / Acer Close	163	Proposed housing allocation in TWLP
T88/0216b	Land at Priorslee Road	75	Allocated in CTAAP; Proposed housing allocation in TWLP
T89/0223	Land adjoining BRJ School	70	Proposed housing allocation in TWLP
T78/0114a	Land off, Stanier Drive, Madeley (RP1)	70	No change. Remnant of larger site
T74/0076a	Land off Majestic Way	65	Proposed housing allocation in TWLP
T78/0114c	Land off, Stanier Dive, Madeley (RP2)	30	No change
T68/0020b	Land off Randlay Avenue	26	No change
T88/0216a	Land at Priorslee Road	25	Allocated in CTAAP. Proposed housing allocation in TWLP
S71/10	Land at, St Georges Road, Donnington, Wrockwardine Wood	24	No change
T88/0229w	Arleston Lane East	15	Proposed Green Network in TWLP
T68/0020a	Land off Randlay Avenue	13	No change
T80/0001	Ketley Bank	11	No change
T88/0229v	Arleston Lane West	6	No change
T74/0082c	Park Lane	5	Part of Mineral Safeguarding Area
T91/0236d	Pool Hill Road (Plot C)	4	Commitment under TWC/2011/0186
T91/0236a	Station Road	2	No change

2 Housing

2

2.1.8 Table 2.5 includes the up-to-date status of each site at March 2017. It should be noted that these sites are additional to the sites included in appendices relating to existing commitments, with the exception of one site that benefits from planning permission.

2.2 Strategic Site Update

2.2.1 In Lawley Village, Telford's largest residential development has nearly built 1,500 homes now with a consortium of the Country's largest 3 house-builders. Phase 7 has recently commenced with Phase 8 well under construction leaving Phase 6 nearing completion.

2.2.2 In Lightmoor Village, Crest Nicholson have now finished their development of 66 homes with Keepmoat Homes starting a further phase of 200 units known as The Paddocks.

2.2.3 At Telford Millennium Community, Taylor Wimpey are continuing to build on this site with 59 completions this year.

2.3 Housing Land Provision 2017

2.3.1 Set out below is an updated version of Table 10 of the Telford & Wrekin Local Plan (TWLP), which summarises the latest position regarding overall housing land provision for the borough (as at end of March 2017). It is derived from an assessment of all known and projected sources of land supply available to the Council.

Table 2.6 Housing Land Provision for the borough 2011-31 (as at end of March 2017)

		Gross	Net
A	Net completions (2011-17)		5646
B	Dwellings with planning permission (under construction)		799
C	Dwellings with planning permission (not started)	8385	
D	Less 20% allowance for non-implementation	(1677)	6708
E	Total Existing Supply (A+B+D)		13153
F	Supply from resolution to grant sites	670	
	Less 20% allowance for non-implementation	(134)	536
G	Telford & Wrekin Local Plan site allocations	914	
	Less 20% allowance for non-implementation	(183)	731
H	Windfall allowance (sites 0.1 ha or less)	330	330
I	Madeley Neighbourhood Development Plan site - Rough House Park	50	
	Less 20% for non-implementation	(10)	40
J	Total Future Supply (F+G+H+I)		1637

2 Housing

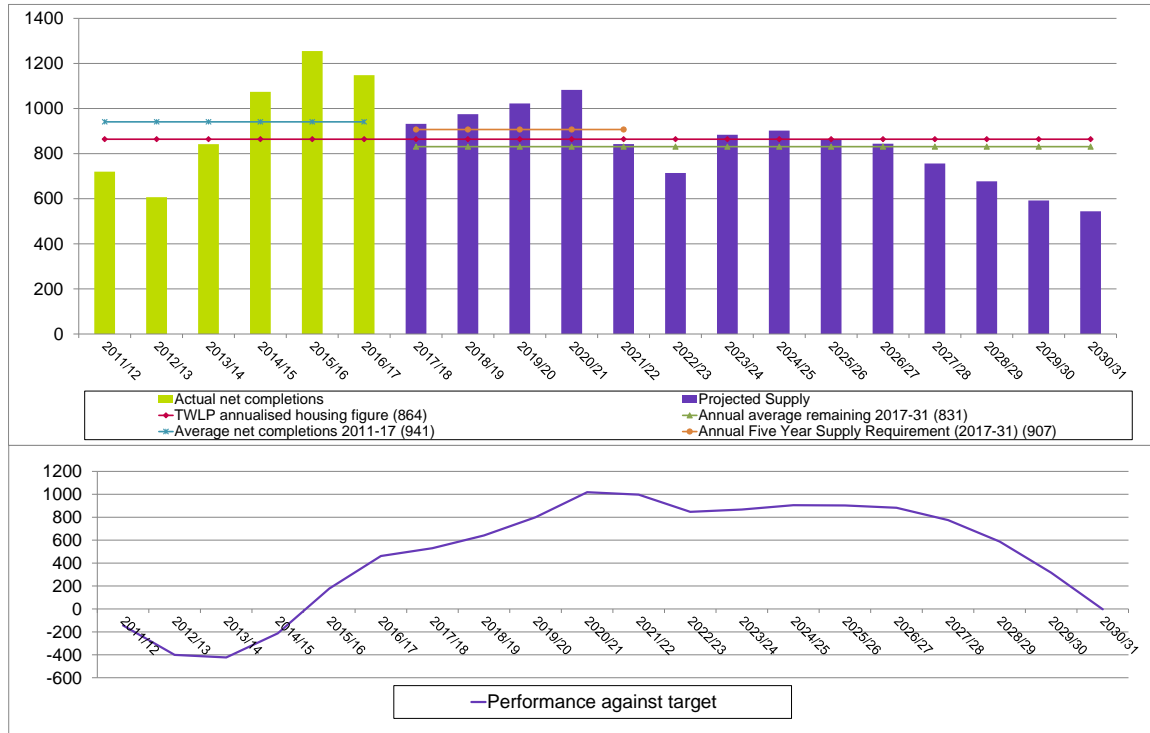
		Gross	Net
K	Total Housing Land Provision (E+J)		14790
L	Overall Housing Target for the period 2011-31		17280
M	Residual Supply from other sources inc. additional site allocations		2490

2.3.2 On the basis of the calculation presented here, the majority of the dwellings needed to deliver the local plan growth target have already been identified. Nonetheless, a residue of land remains to be identified in order that the planned level of growth can be delivered by 2031 (assuming that predicted levels of non-implementation actual happen). The next section will consider the issue of future supply and delivery in the borough.

2.4 Housing Trajectory - updated, end of March 2017

2.4.1 The housing trajectory assumes a level of supply necessary to deliver the newly-adopted planned housing requirement of 17,280 net new dwellings by 2031. The figure below illustrates the number of completions that could be expected during the plan period, updated to the end of March 2017. The performance against target measure illustrates the likely progress towards achieving the planned level of growth over the plan period.

2.4.2 The period covering 2017 to 2022 has been informed by an assessment of the likely delivery from identified sites as part the Council's five year supply update (published separately). It is expected that actual delivery will continue to exceed the annual planned housing requirement (shown by line stretching from 2011 to 2031) for the foreseeable future. The latest position reinforces the outcome of the Local Plan examination, which concluded that land supply is adequate in the short term.

Figure 1 Housing Trajectory - updated, end of March 2017

2.4.3 It is worth noting that the trajectory makes certain assumptions regarding existing and future land supply. Most importantly, the trajectory includes a notional supply from additional site allocations (2,490 dwellings as of end of March 2017) to help achieve the borough's Local Plan growth target beyond the current five year period. This is on the basis that actual delivery is 20% less than it might be due to non-implementation factored into the overall housing land provision. In addition, it is also assumed that no additional non-allocated land yet to be granted consent will come forward between 2017 and 2031. Consequently, this is considered to be a worst-case scenario and it is likely that supply, including from site allocations, will be sufficient to deliver the level of growth planned for up to 2031.

2 Housing

3 Economic Development

3 Economic Development

3 Economic Development

3.0.1 The information and data set out in this section has been obtained from planning application monitoring and from the Office for National Statistics through their NOMIS website.
(1)

3.1 Employment

Table 3.1 Employment levels by type

	Estimated Numbers in Employment (March 2017)	Estimated Numbers in Employment (March 2016)	Difference
1 Managers, directors and senior officials	7,100	7,200	-100
2 Professional occupations	12,100	13,100	-1000
3 Associate professional & technical	10,900	12,000	-1100
4 Administrative & secretarial	10,000	9,900	+100
5 Skilled trades occupations	8,900	8,600	+300
6 Caring, leisure and other service occupations	7,000	6,500	+500
7 Sales and customer service occupations	6,400	7,400	-1000
8 Process plant & machine operatives	8,700	7,000	+1700
9 Elementary occupations	11,000	10,800	+200
Totals:	82,100	82,500	-400

3.1.1 The data shows a slight decrease in employment in the borough. The largest group of jobs is still within professional occupations, however this has decreased. There have also been decreases in the number of people working in sales and customer service occupations, associate professional & technical and managers, directors and senior officials.

3.1.2 There has been a increase in elementary occupations (that is, those jobs which which require the knowledge and experience necessary to perform mostly routine tasks, often involving the use of simple hand-held tools and, in some cases, requiring a degree of physical effort.), process plant & machine operatives, caring, leisure and other service occupations, skilled trades occupations and administrative & secretarial.

1 <http://www.nomisweb.co.uk/>

3 Economic Development

3

3.1.3 As of March 2017 the number of people unemployed within Telford & Wrekin slightly increased to 4,200, a rate of 4.8%. This is below the regional level but slightly above the national level of 4.7%. However, unemployment is still at its lowest level since 2008.

3.2 Employment Land

3.2.1 Telford & Wrekin continues to have a substantial supply and a wide variety of employment land and premises available with extant planning permissions for businesses and developers as indicated by Employment land available by use class (hectares). This includes former New Town development land that remains available within established employment parks and industrial estates including Donnington Wood, Hadley Park, Halesfield, Hortonwood and Stafford Park. Many of these larger sites are suitable for larger format industrial and warehousing units (B2 and B8 uses).

3.2.2 The figures in the following table are a summary of the amount of land available (in hectares) for new build employment development at April 2017 with planning permission secured under the Town and Country Planning Act. Land available does not include sites committed for employment uses in the Wrekin Local Plan with Section 7(1) New Towns Act consents which have not come forward yet. The total amount of hectares should be read with some caution also as it includes sites with mixed use permissions where the planning permission data does not distinguish the extent of land to be set aside for the B1(c) use. Individual site level data is more accurate and is listed in Appendix 6a.

Table 3.2 Employment land available by use class (hectares) (only includes sites not started for new build)

	B1(a) (Offices)	B1(b) (Research & Development)	B1(c) (Light Industry)	B2 (General Industry)	B8 (Warehousing & Distribution)	Totals
Telford	9.96	0	7.17	6.32	26.08	49.53
Newport	0	0	0	0	0	0
Rural Area	36.6	0	6.08	0	0.02	42.7
Borough Total	46.56	0	13.25	6.32	26.1	92.23

3.2.3 Employment uses are those defined as Use Order B1(a) offices other than UCO A2, B1(b) Research and development of products and processes, B1(c) Light industry, B2 General Industry and B8 Storage & distribution.

3.2.4 Employment land available by use class (hectares) (only includes sites not started for new build) shows that Telford continues to contain the majority of the available employment land in the borough. There is a limited amount of new build employment land available within Rural Area with the majority of the land available being through extensions, change of use or replacement developments.

3 Economic Development

3.2.5 Employment floorspace completions (m²) summarises the changes in employment floorspace in the borough between 1st April 2016 and 31st March 2017. All figures presented are net square metres (i.e. floorspace losses are deducted from floorspace gains).

Table 3.3 Employment floorspace completions (m²)

	B1(a) (Offices)	B1(b) (Research & Development)	B1(c) (Light Industry)	B2 (General Industry)	B8 (Warehousing & Distribution)	Totals
Telford	-1194.98	-1719	87	1089.38	2782	1044.4
Newport	-158.02	0	-405	-910	0	-1473.02
Rural Area	117	500	3527.8	428	135452.5	140025.3
Borough Total	-1236	-1219	3209.8	607.38	138234.5	139597

3.2.6 Overall there has been a net gain of 139597 square metres of employment floorspace completions within the borough. There has been large gains in B8 floorspace at Angel Centre in Obaston.

3.2.7 It is acknowledged that, similar to housing, there are a large number of extant section 7(1) consents for employment. The majority of these are proposed allocations in the Telford & Wrekin Local Plan (TWLP).

3.3 Retail and Town Centres

3.3.1 This section examines the changes that have taken place in floorspace and development land for retail and other main town centre uses recorded through planning applications. 'Main town centre uses' are defined in the National Planning Policy Framework as;

- retail;
- leisure;
- entertainment facilities;
- more intensive sport and recreation uses;
- offices, and;
- arts, culture and tourism development.

3.3.2 For the purposes of monitoring, these are taken to mean developments that fall within the A1, A2, A3, A4, A5, B1(a) and D2 categories of the Use Classes Order⁽²⁾. Changes to floorspace (net square metres) within Town Centre use classes sets out the changes to floorspace (net square metres) within these town centre use classes that have occurred by development that needed planning permission in the monitoring year 1st April 2016 to 31st March 2017.

3 Economic Development

3

Table 3.4 Changes to floorspace (net square metres) within Main Town Centre use classes

	A1 (Retail)	A2 (Financial & Professional)	A3 (Restaurants & Cafes)	A4 (Drinking Establishments)	A5 (Hot Food Takeaways)	B1(a) (Offices)	D2 (Assembly & Leisure)
Telford	1318.06	-430	2720	-9.5	-307	-1194.98	3326
Newport	408.6	0	0	0	0	-158.02	0
Rural Area	0	0	0	-256	0	117	0
Borough Total	1727	-430	2720	-266	-307	-1236	3326

3.3.3 The above data relies solely on planning permission data. It would appear to show a gain in floorspace within Use Classes A1, A3 and D2.

3.3.4 The data does not take account of the substantial new permitted development rights given to promote flexibility in main town centre uses following the enactment of the Town and Country Planning (General Permitted Development) (England) Order 2015 in April 2015.

3.3.5 Town Centre uses completed by Centre breaks down the completed town centre uses by the different centres in the borough.

Table 3.5 Main Town Centre uses completed by Centre

	A1 (Retail)	A2 (Financial & Professional)	A3 (Restaurants & Cafes)	A4 (Drinking Establishments)	A5 (Hot Food Takeaways)	B1(a) (Offices)	D2 (Assembly & Leisure)	Total Floorspace change in Town Centre Uses
Dawley	0	-41	0	0	0	0	0	-41
Donnington	0	0	0	0	0	0	0	0
Hadley	0	0	0	0	0	-113	0	-113
Madeley	2211.34	0	0	0	0	0	0	2211.34
Newport	0	0	0	0	0	-158.02	0	-158.02
Oakengates	0	0	0	0	0	-34.05	0	-34.05
Telford	-18	-225	2397.5	260	0	-1708	390	1096.5
Wellington	-1365	-112	222.5	-129	-69	-143	0	-1595.5
Total within centres	828.34	-378	2620	131	-69	-2156.07	390	1366.27

3.3.6 With regards to centres in the borough, there has been an overall growth in floorspace. There has been losses of pubs and some retail uses to dwellings, other A use classes and sui generis uses.

3 Economic Development

4 Travel and Accessibility

4 Travel and Accessibility

4 Travel and Accessibility

4.0.1 The third Local Transport Plan (LTP3) for Telford & Wrekin was approved in early 2011 and sets out how the Council will plan to manage, maintain and develop the Borough's network over the period 2011 to 2026.

4.0.2 The six Local Transport Plan goals which will help achieve the overall vision for 2026 are:

1. Making travel more reliable and efficient, to attract jobs and support growth and regeneration.
2. Maintain highways effectively and efficiently
3. Reduce carbon emissions to help tackle climate change
4. Allow everyone to access jobs, education, healthcare, shops and leisure
5. Improve safety and security on the transport network and promote active travel choices which encourage people to be healthier
6. Improve and quality of life by reducing the visual, noise, air quality and other impacts of transport on people and the local environment.

4.0.3 The LTP3 comprises an overarching core strategy which provides the guiding principles for the management and improvement of the transport network, and a series of individual strategies that will be developed in order to tackle specific topics. Examples of individual strategies include the Rights of Way Improvement Plan, Asset Management Plan and Road Safety Strategy.

4.0.4 The Local Sustainable Transport Fund (LSTF) is a programme launched by government in January 2011 was established in support of the Local Transport White Paper 'Creating Growth, Cutting Carbon: Making Sustainable Local Transport Happen'. The Council secured funding toward two major programmes of work:

1. Travel Telford - a £3.5m programme of sustainable, low carbon, low cost transport improvements, including improvements to the walking and cycling network and the development of a Park & Ride service for Ironbridge.
2. Town Centre Box Road - a large (£8.4 million) programme of improvements to the roads surrounding Telford Town Centre.

4.0.5 The Council have been successful in securing £22.6m of funding towards highway network and other infrastructure improvements as part of the Marches Local Enterprise Partnership, Growth Deal. The Telford Growth Points Package has delivered key junction improvements on the highway network including capacity enhancements at 7 key roundabout's and junctions on the highway network. The investment is now helping to deliver increased numbers of jobs and houses through a more efficient highway network. £3.6m of funding has also delivered the Eastern Gateway scheme which has seen improvements to the capacity of junction 4 of the M54.

4.0.6 A further £10.6m worth of funding has been secured towards the Telford Town Centre Connectivity Package. Works underway include the following projects:

4 Travel and Accessibility

4

- Replacement of the footbridge connecting Telford Central Railway Station to Telford Town Centre with a new Disability Discrimination Act compliant bridge serving as a key gateway to the town.
- Expansion of Rampart Way and Hall Park Way to provide additional highway capacity around and through town centre.

Picture 1 Wellington Bus Station



4.0.7 In 2017 the Council secured £9m of funding towards The Newport Enterprise Package, this will help deliver 950 jobs and 9 hectares of employment land, which will help meet the employment needs of the town over the life of the Local Plan. The scheme will be funded through a mix of sources including developer contributions and £6.3m from Growth Deal funding.

4.0.8 Since 2016 Telford & Wrekin Council has been a formal member of West Midlands Rail, the partnership of fourteen Metropolitan District, Shire and Unitary local transport authorities established to gain greater local influence over the region's rail services. As a result of this initiative during August 2017 it was announced that the new West Midlands rail franchise, which will commence in December 2017, will bring additional train services to Telford Central and Wellington along with investment in station facilities and additional car parking at Telford Central.

4.0.9 The Council will continue to seek further opportunities for external funding to help supplement requests for developer contributions.

4 Travel and Accessibility

5 Water and Flood Risk

5 Water and Flood Risk

5 Water and Flood Risk

5.0.1 National guidance set out in the National Planning Policy Framework (NPPF) states inappropriate development in flood risk areas should be avoided by directing development away from areas of highest risk, but where development is required making it secure without increasing flood risk elsewhere. The Environment Agency provide advice on applications to which they object to over flood risk or water quality via their website.

5.0.2 In respect of Telford & Wrekin, no planning permissions were granted which were contrary to Environment Agency advice on flooding or water quality.

5.0.3 The Council acknowledge that the Environment Agency state that planning application reference TWC/2016/0902 and TWC/2016/1038 were permitted contrary to the Environment Agency's advice.

5.0.4 However, in regards to planning reference TWC/2016/1038, the Council are awaiting amended plans, once these are received, consultation on the amended information will take place, which will include the Environment Agency.

5.0.5 In regards to planning reference TWC/2016/0902, the Environment Agency removed the initial objection following the inclusion of EA approved planning conditions.

6 Biodiversity

6 Biodiversity

6 Biodiversity

6.0.1 There are eight designated Sites of Special Scientific Interest (SSSI) in Telford & Wrekin and Natural England carries out regular Condition Monitoring on these sites to assess the percentage of SSSI's in Favourable Condition.

Table 6.1 Results of Natural England 2015 Condition Monitoring of SSSI's in Telford & Wrekin

SSSI Name	Reason for designation	% Area Meeting PSA target	% Area favourable	%Area unfavourable recovery	% Area unfavourable no change	% Area unfavourable decline	% Area destroyed/ part destroyed
Allscott settling Ponds	Series of lagoons supporting bird population of County importance					100	
Lincoln Hill	Geological SSSI with varied rock exposures	100		100			
Lydebrook Dingle	Narrow steep sided dingle with ancient and relatively undisturbed woodland.	100		100			
Muxton Marsh	Good example of unimproved grassland, fen and carr remaining as a result of coal mining.	100		100			
New Hadley Brick Pit	Geological SSSI of outstanding importance for interpreting the geological history of the late Carboniferous in Britain.	100	100				
Newport Canal	Disused canal with assemblage of aquatic plants of value in Shropshire.				100		
The Wrekin & The Ercall	Prominent ridge of geological and biological importance. Valuable woodland supporting bird assemblage.	100	100				
Tick Wood and Benthall Edge Wood	An area of ancient native mixed deciduous woodland	100	10.35	89.65			

6 Biodiversity

6

SSSI Name	Reason for designation	% Area Meeting PSA target	% Area favourable	%Area unfavourable recovery	% Area unfavourable no change	% Area unfavourable decline	% Area destroyed/ part destroyed
	overlooking the Severn Gorge. Several uncommon plant species have been recorded, including fingered sedge which is only known in the Shropshire locality.						

6.0.2 The majority of the SSSI's in Telford & Wrekin are in favourable condition or in unfavourable recovering condition which is considered, by Natural England, to indicate that appropriate action is being undertaken to move towards favourable condition. Newport Canal remains in unfavourable and declining condition.

6.0.3 Local Nature Reserves (LNR) are designated by the Local Planning Authority in partnership with Natural England, Town and Parish Councils and interested community groups. Telford & Wrekin currently has nine designated Local Nature Reserves, as listed below, and is in the process of designating additional areas and extending others.

6.0.4 Designated Local Nature Reserves in Telford & Wrekin:

- Granville Country Park
- Limekiln Wood
- Lodge Field
- Madebrook Pools & Stirchley Dingle
- Telford Town Park
- The Ercall & Lawrence's Hill
- Dothill
- Madeley Pitmounds
- The Beeches

6 Biodiversity

Table 6.2 Proposed Local Nature Reserves in Telford & Wrekin

Site Name	Stage in designation process	Timescale for designation
Apley Woods pLNR	Management Plan complete and Cabinet approved the declaration in July 2016. The legal checks are currently being undertaken.	Autumn 2017
The Cockshutt pLNR	A draft management plan is being prepared along with a draft boundary for consultation	2018
Lightmoor pLNR	Draft management plan being prepared for the site and a draft boundary is being prepared for consultation.	2018
Randlay Valley pLNR	Draft management plan being prepared for the site and a draft boundary is being prepared for consultation.	2018
Dawley Pools and Pitmounds pLNR	Early stages of engagement	2018
Rough Park pLNR	A draft management plan is being prepared for this site along with a draft boundary for consultation.	2018
Ketley Paddock Mound pLNR	Management Plan agreed and Cabinet approved declaration in July 2016. Legal checks currently being undertaken.	Autumn 2017

6.0.5 There are two types of Locally Designated Sites in Telford & Wrekin:

6.0.6 Local Wildlife Sites (formally known as County Wildlife Sites) are adopted by Shropshire Wildlife Trust in partnership with a range of organisations including Local Authorities and Natural England based on areas of land, either in private or public ownership, which represent examples of high quality habitats or which support a range of important species.

6.0.7 Local Geological Sites (formerly known as Regionally Important Geological or Geomorphological sites RIGS) are adopted by Shropshire Geological Society in partnership with a range of organisations including Local Authorities and Natural England and represent high quality examples of geological exposures and other formations.

6.0.8 There are 47 Local Wildlife Sites and 24 Local Geological Sites in Telford & Wrekin. The adoption of new sites is managed through the Local Sites Partnership of which Telford & Wrekin Council is a member.

6.0.9 Local Authorities are required by DEFRA to report the proportion of Locally Designated Sites in their area which are in 'positive management' under Single Indicator 160-00. 'Positive management' is taken in Shropshire to mean: that more than 50% of the site is in an appropriate woodland grant scheme or higher level stewardship scheme, that the site has a formal management plan, that the site has been recently visited and seen to be in good condition or that Shropshire Wildlife Trust (or Shropshire Geological Society) has visited the site and provided the owner with formal advice which is being acted upon.

6 Biodiversity

6

Table 6.3 Proportion of Locally Designated Sites in 'positive management' in Telford & Wrekin

Type of Locally Designated Site	Number of sites in Telford & Wrekin	Number of sites in 'positive management'	Total Percentage of Local Sites in 'positive management'
Local Wildlife Sites	44	29	66 %
Local Geological Sites	24	14	

6.0.10 The percentage of Locally Designated Sites in 'positive management' is measured annually and reported to Defra. 66% of Locally Designated Sites in Telford & Wrekin are in 'positive management'. This is significantly above surrounding local authorities, Shropshire Council for example reports only 37% of sites in 'positive management'. This is because Telford & Wrekin has secured either ownership or management control over a larger proportion of its Locally Designated Sites than most other Local Authorities. Across the whole of the VC40 ⁽³⁾ area, which includes Shropshire and Telford & Wrekin, the Local Sites Partnership aims for an increase of 5% annually in the number of sites which can be assessed as in 'positive management.'

3 VC40 refers to the Vice County. This is a geographical division of the British Isles, used for the purposes of biological recording.

6 Biodiversity

7 Green Spaces

7 Green Spaces

7 Green Spaces

7.0.1 Telford has extensive areas of green space, much of it formed by the pioneering "Green Network" designation which has helped to provide protection.

7.0.2 The Green Network is an urban green space designation which recognises the strategic nature and significance of green infrastructure planning within the Borough. It aims to protect, provide, enhance and expand the green infrastructure assets which contribute to the quality of life within the urban area of Telford. The table below shows planning application decisions made by the Council during 1st April 2016 and 31st March 2017 in areas within and adjacent the Green Network.

Table 7.1 Planning applications adjacent or within Green Network

Type of application	Refused	Granted	Total
Full	7	142	149
Outline	3	11	14
Reserved matters	0	5	5
Advertisement	1	17	18
Listed Building	0	8	8
Trees in Conservation Area	0	25	25
Tree Preservation Order	0	4	4
Section 192 Proposed Use	0	0	0
Householder (Prior Approval)	4	1	5
Demolition determination	1	2	3
Hedgerow removal	0	0	0
Telecommunication determination	0	2	2
TOTAL	16	217	233

7.0.3 The significant pressure for development within urban areas is a matter with impact on green network. The table above shows planning decisions made by the Local Planning Authority on planning applications which were either within or adjacent to the Green Network. It must be noted that most of the applications did not result in a change to the green network or reduction in its area. The majority are minor applications for conversions of existing buildings, advertisement consents and consents regarding trees. Some applications also provide additional open space and improvements to the green network. Proposed housing development will generally result in an overall improvement to open space provision in the locality as it will have a wider community benefit and meet the aims of the Green Network.

7 Green Spaces

7

7.0.4 Telford & Wrekin Council has a Green Infrastructure Framework (2012). This includes a comprehensive overview of the provision and performance of the green infrastructure present in the borough, identifying what green infrastructure currently exists; what it is (the type), where it is (the distribution) and what it is currently doing (how it functions).

7.0.5 The TWLP will carry forward the green network designation. The Local Plan has updated and improved the Green Network designation so that it is compliant with the National Planning Policy Framework (NPPF), and addresses the type and function of land as well as the amount of open space which is included in the designation.

7 Green Spaces

8 Waste and Minerals

8 Waste and Minerals

8 Waste and Minerals

8.1 Waste

8.1.1 As can be seen from Amount of municipal waste arising in Telford & Wrekin, there has been a increase in the total of waste arisings between the calendar year 2016 to 2017. It is important to note that these latest figures are provisional as they are yet to be audited by DEFRA.

Table 8.1 Amount of municipal waste arising in Telford & Wrekin

	Year	Landfill	Incineration with EfW*	Incineration without EfW*	Recycled/composted	Other	Total waste arisings
Amount of waste arisings in tonnes	2007	56153.80	0	0	29727.07	0	85880.87
	2008	63216.15	122.83	0	30214.81	0	93553.79
	2009	56693.18	89.83	0	31560.96	0	88343.97
	2010	54390.18	61.44	0	35064.21	0	89519.99
	2011	51520.03	58.74	0	37103.94	0	88682.71
	2012	50589.32	82.31	0	35346.84	0	86018.47
	2013	46819.80	196.63	0	34995.94	0	82110.39
	2014	45479.54	74.28	0	36733.24	0	82287.06
	2015	44180.63	1,426.09	0	40215.99	0	85822.71
	2016	44411.85	1,279.56	0	41404.13	0	87095.54
	2017	24306.60	22,001.21	0	38031.81	0	88142.55

* - EfW is energy from waste, for example as electricity or heating.

8.1.2 The recycled/composted column includes the re-use figure. Since 2007 the amount of waste sent to landfill has fallen whilst the amount of waste recycled, re-used or composted has increased significantly. Please note the large change in landfill and incineration tonnages for 2017 is due to Veolia taking over recycling processing and using incineration as their primary outcome instead of landfill.

8.2 Minerals

8.2.1 Shropshire Council and the Borough of Telford & Wrekin are combined as a single sub region for the purpose of aggregates supply allocations. The Government requires that Mineral Planning Authorities should plan for a steady and adequate supply of aggregates.

Primary Aggregates

8.2.2 The NPPF requires the Council to identify a landbank of 7 years or above for sand and gravel. The current landbank for the sub region of Shropshire and Telford & Wrekin is entirely met by sites within Shropshire since there are no current permitted reserves within the Borough.

8 Waste and Minerals

8.2.3 The latest available data indicates that, at 0.74 million tonnes, sand and gravel production in Shropshire and Telford & Wrekin in 2016 is continuing to recover from lower levels of production in recent years and is now above both the 10 year rolling average for sand gravel sales (0.69 million tonnes) and the 3 year average (0.70 million tonnes). The permitted landbank was equivalent to almost 17 years production in 2016.

8.2.4 During 2016/17, there were no additional reserves of sand and gravel granted planning permission.

8.2.5 The NPPF requires the Council to identify a landbank of at least 10 years for crushed rock. The area administered by Shropshire and Telford & Wrekin produced 2.69 million tonnes of crushed rock in 2016 against a 10 year average of 2.39 million tonnes. Production of crushed rock is from a single site in Telford & Wrekin which contributes about a quarter of the annual production.

8.2.6 In 2016 there were 8 permitted sites in Shropshire, 4 of which were operational and 1 permitted and operational site in Telford & Wrekin. The latest available data indicates that crushed rock production in Shropshire and Telford & Wrekin was significantly above the 10 year trend (2.39 million tonnes) but below the 3 year trend (2.86 million tonnes).

8.2.7 The landbank of permissions for crushed rock working has remained consistently above the minimum target of 10 years. The permitted landbank of permissions was equivalent to almost 48 years' production in 2016.

8.2.8 During 2015/16, there were no additional reserves of crushed rock granted planning permission.

Secondary and recycled aggregates

8.2.9 Data on the production and use of secondary and recycled aggregates is limited and requires further consistent data collection from the industries involved. Figures for secondary and recycled materials used as aggregates are currently only collected sub-regionally and only limited information is available for Shropshire and Telford & Wrekin specifically.

8.2.10 Environment Agency data suggests that about 0.4 million tonnes of inert waste generated in the two areas was handled at licensed waste management facilities in 2016.

Industrial Minerals

8.2.11 Brick Clay is worked within the borough at Hadley Quarry, this site supplies Blockleys Brickworks. In 2005 the site was granted planning permission to extend consequently increasing the permitted reserves by some 2.8million tonnes. Adequate permitted reserves of brick clay exist to maintain supplies up until year 2032.

8 Waste and Minerals

9 Heritage

9 Heritage

9 Heritage

9.0.1 Telford & Wrekin benefits from a rich and diverse heritage. This heritage includes the Ironbridge Gorge World Heritage Site, urban Conservation Areas of Newport, Wellington and Horsehay, rural Conservation Areas in Edgmond, High Ercall and Wrockwardine together with numerous listed buildings, locally listed buildings, Scheduled Ancient Monuments and archaeological features. This built heritage is important not only for its historical significance but also in its contribution to community identity, education and environmental quality.

9.0.2 Currently the main indicator for heritage is the change in extent of Conservation Areas. This is shown in Conservation Areas.

Table 9.1 Conservation Areas (status as of March 2017)

Conservation Area	Hectares	Character Appraisal	Management Proposals
Edgmond	24.2	Yes	Yes
Newport	22.4		
Wrockwardine	26.9	Yes	Yes
High Ercall	9.5	Yes	Yes
Wellington	8.2	Yes	Yes
Horsehay	25.1		
Severn Gorge	417.9	Yes	Yes
Borough	534.2	-	-

9.0.3 Conservation Areas also shows which of the Conservation Areas have Character Appraisals and Management Proposals. Over 70% of the Conservation Areas (over 90% in terms of area) are both in place. Horsehay Conservation Area Character Appraisal is due for adoption this year.

10 Renewable Energy and Climate Change

10 Renewable Energy and Climate Change

10 Renewable Energy and Climate Change

10.0.1 Existing planning policy (the Core Strategy and saved Wrekin Local Plan policies) and emerging planning policy in the TWLP recognise and promote sustainable planning and design through both passive (such as accessible locations, layout, building orientation and energy efficient) and promote active (such as the use of photovoltaic panels) measures.

10.0.2 Development which has involved the delivery and use of renewable energy forms part of this objective.

10.0.3 The Council runs its own solar farm at Wheat Leasows. In addition, it has approved a number of planning applications. The following permissions provide a further indication of the borough's commitment to renewable energy.

Table 10.1 Renewable Energy Schemes approved in 2016-2017

Application Number	Description
TWC/2016/0270	Installation of solar panels
TWC/2016/0436	Installation of solar panels
TWC/2016/0714	Erection of free standing solar panels

11 Development Plan Documents

11 Development Plan Documents

11 Development Plan Documents

11.0.1 The Council's current development plan comprises the following documents:

- Core Strategy (2007)
- The Central Telford Area Action Plan (2011)
- Wrekin Local Plan (1995 to 2006) (saved policies)
- The Shropshire and Telford & Wrekin Minerals Local Plan (2000) (saved policies)
- The Shropshire and Telford & Wrekin Joint Structure Plan (2002) saved policies)
- The Madeley Neighbourhood Development Plan (2015)
- The Waters Upton Neighbourhood Development Plan (2016)

11.0.2 The Inspector for the Telford and Wrekin Local Plan examination is inviting comments on the Proposed Main Modifications to the Telford & Wrekin Local Plan Publication Version. When adopted, the Local Plan will replace all of the borough's current development plan documents (DPDs) except for the Madeley Neighbourhood Development Plan and the Waters Upton Neighbourhood Development Plan. The Council will also prepare new Supplementary Planning Documents (SPDs) to support the Local Plan.

11.1 Local Development Scheme Milestones

11.1.1 The Local Development Scheme (LDS) explains which planning policy documents make up the Telford & Wrekin Development Plan and is a requirement of the Planning and Compulsory Purchase Act 2004 (as amended). The LDS identifies which development plans will be produced, in which order and when.

11.1.2 The timetable for the TWLP is shown on the table below and the current LDS is available on the Council's website via the following link http://www.telford.gov.uk/info/20172/planning_policy_and_strategy/542/local_development_scheme.

Table 11.1 Timetable for delivering the Telford & Wrekin Local Plan

Task	Date
Submission of Local Plan for independent examination	June 2016
Examination in Public Hearings	February 2017
Local Plan adopted	Early 2018

12 Duty to Cooperate

12

12 Duty to Cooperate

12 Duty to Cooperate

12.0.1 Under Section 110 of the Localism Act 2011 local authorities have a legal duty to engage constructively, actively and on an on-going basis to maximise the effectiveness of Local Plan preparation in the context of strategic cross boundary matters.

12.0.2 In November 2017, the process followed by the council as part of the Telford & Wrekin Local Plan 2011-31 was vindicated by an independent Planning Inspector as being procedurally compliant and sound in planning terms.

12.0.3 The Council will continue to work constructively, actively and on an on-going basis with its neighbours on strategic matters that have cross-boundary implications.

13 Core Strategy

13

13 Core Strategy

13 Core Strategy

13.0.1 The Local Development Framework was adopted in 2007 and includes planning policies covering the period up to 2016.

13.0.2 The adopted Core Strategy includes a section on Implementation and Monitoring. Core Strategy Indicators Progress Summary shows the performance of the Core Strategy against the indicators. If the indicator is on track it receives 1 point, whilst those not showing any notable trend or where the indicator is not easy to measure or estimate receive a zero. Those which are not performing on trend, receive -1. Each policy has several indicators (the scores are on each indicator), for each policy the total for all the indicators are given in Core Strategy Indicators Progress Summary.

13.0.3 A number of the indicators are linked to the completion of dwellings in previous years and so related policy areas will have lower scores. However the rate in house building within the borough has increased over the last few years so the scores are also expected to increase.

13.0.4 Following the adoption of the new Telford & Wrekin Local Plan 2011-31, the Council will monitor progress against the specific indicators set out in that plan.

13 Core Strategy

13

Table 13.1 Core Strategy Indicators Progress Summary

Policy	Title	Score
SDS	Spatial Development Strategy	+1
CS1	Homes	+3
CS2	Jobs	0
CS3	Telford	+1
CS4	Central Telford	+1
CS5	District and Local Centres	+1
CS6	Newport	+1
CS7	Rural Area	+1
CS8	Regeneration	+1
CS9	Accessibility and Social Inclusion	+1
CS10	Community Facilities	+1
CS11	Open Space	0
CS12	Natural Environment and	+1
CS13	Environmental Resources	
CS14	Cultural, Historic and Built Environment	0
CS15	Urban Design	0

13 Core Strategy

14 Central Telford Area Action Plan

14 Central Telford Area Action Plan

14 Central Telford Area Action Plan

14.0.1 As with the Core Strategy, the Central Telford Area Action Plan includes a monitoring framework. Rather than score each policy, the document scores performance based on Vision Themes. For each theme there are several indicators. If the indicator is on track it gets 1 point or if it is negative trend it gets a -1, those not showing any notable trend or the indicator is unmeasurable, get zero. Central Telford Area Action Plan Progress shows the scores for all the indicators per vision theme.

Table 14.1 Central Telford Area Action Plan Progress

Objective	Title	Score
Vision Theme 1	A Centre with a Vibrant Heart	+6
Vision Theme 2	A Distinctive Sense of Place	+2
Vision Theme 3	A Place for Living	-1
Vision Theme 4	A Centre with a Thriving Economy	+1
Vision Theme 5	An Accessible and Connected Centre	+4
Vision Theme 6	A Centre with Low Environmental Footprint	0
Vision Theme 7	A Green Community	+3

14.0.2 As the delivery of developments around the Town Centre are now progressing, many of the indicators are positive. It is expected that this will improve further as developments and improvements are completed.

15 Infrastructure Delivery Planning

15 Infrastructure Delivery Planning

15 Infrastructure Delivery Planning

15.0.1 The Council currently seeks developers contributions through Section 106 planning obligations.

15.0.2 In conjunction with the Local Plan, the Council has also prepared an Infrastructure Delivery Plan (IDP). This has been used as an evidence base to inform the preparation of any future CIL.

16 Neighbourhood Planning

16 Neighbourhood Planning

16 Neighbourhood Planning

16.0.1 Town and Parish Councils (or Neighbourhood Forums in other areas without parishes) can now prepare Neighbourhood Development Plans and Neighbourhood Development Orders. A Neighbourhood Development Plan can enable communities to establish general planning policies for development and use of land in their area. It can be detailed, or general, depending on what local people want and forms part of the Development Plan for Telford & Wrekin. To be put in place a plan needs to pass a number of tests; it must conform to national planning policies and the strategic policies of Telford & Wrekin Council.

16.0.2 In accordance with the Localism Act (2011) and Neighbourhood Planning (General) Regulations 2012 the Parishes prepare these plans, rather than Telford & Wrekin Council, although Telford & Wrekin Council offers advice and assistance.

16.0.3 The borough currently has two made Neighbourhood Development Plan and six designated Neighbourhood Development Plan Areas, which are working towards the production of a Neighbourhood Development Plan for their area.

16.0.4 Madeley Town Council made the first neighbourhood plan in the borough, Waters Upton was the second. These Neighbourhood Plans are now used to inform planning decisions in their respective areas.

16.0.5 In October 2013, Stirchley & Brookside Parish Council applied to designate the Parish area of Stirchley & Brookside as a neighbourhood area outside of the Frontrunner scheme and were designated in January 2014. Ercall Magna Parish, Lilleshall Parish, Edgmond Parish, Newport Town Council and Donnington and Muxton Parish also have designated areas and are preparing Neighbourhood Development Plans for their respective areas for Neighbourhood Planning. At this stage, no Neighbourhood Development Orders are proposed in Telford & Wrekin. Progress was made by a number of parishes during 2016/17 towards making their plans.

16.0.6 Further details on progress of those Neighbourhood Development Plans under preparation in the borough is provided on the Council's website as well as on the relevant Parishes own websites, where possible.

17 Appendix

17 Appendix

17.0.1 Attached below are appendices which show the raw data which has been collected. Please note that more recent planning applications with the TWC prefix are reverted back to W prefix. For example TWC/2014/0001 becomes W2014/0001.

Appendix 1 - Residential Plots Completed in 2016/17

Ward Name

	Application No	Address	Previous Use	Hectares	Completed
Apley Castle					
	W2013/0953	Land adjacent, 39 Nightingale Way, Apley, Telford, Shropshire, TF1 6DT	GR	0.00	1
Church Aston and Lilleshall					
	W2014/0437	Phase 2, land south east of Grove Farm, Wellington Road, Newport, Shropshire	FE	0.00	6
	W2016/0657	Caravan, Preston Grange, Preston Upon The Weald Moors, Telford, Shropshire	FR		1
	W2014/0418	Land adjacent Muster Hill Barn, Pitchcroft Lane, Woodcote, Newport, Shropshire	GR	0.00	1
	W2014/0984	Land Adjacent to 55 Pave Lane, Newport, Shropshire, TF10 9LQ	GR	0.00	1
	W2015/0151	Land adjacent The Barns, Church Aston, Newport, Shropshire	GR	0.00	18
	W2015/1054	Leveson House, Hillside East, Lilleshall, Newport, Shropshire, TF10 9GZ	GR	0.00	1
	W2015/1056	Hincks Farm Barn, The Piggery, Kynnersley Drive, Lilleshall, Newport, Shropshire	GR	0.00	1
	W2015/0046	Hinks Farm Barn, Kynnersley Drive, Lilleshall, Newport, Shropshire, TF10 9HT	OB	0.00	2
	W2015/0046	Hinks Farm Barn, Kynnersley Drive, Lilleshall, Newport, Shropshire, TF10 9HT	OB	0.00	-1
	W2015/0048	Former Coach House adjoining 1 Field Aston Manor Barns, Field Aston Lane, Field Aston, Newport, Shrop	OB	0.00	1
College					
	W2015/0905	Park House, 41 Park Street, Wellington, Telford, Shropshire, TF1 3AE	FE	0.00	1
	W2016/0717	1-3 Regent Street, Wellington, Telford, Shropshire, TF1 1PD	OB		2
	W2015/0792	The Kings Head, 141 High Street, Wellington, Telford, Shropshire, TF1 1JU	OB	0.00	4
	W2013/0994	8-10 Church Street, Wellington, Telford, Shropshire, TF1 1DG	OB		2
	W2016/0717	1-3 Regent Street, Wellington, Telford, Shropshire, TF1 1PD	OB		-1

FR - Former Residential FE - Former Employment OB - Other Brownfield GR - Greenfield

Ward Name	Application No	Address	Previous Use	Hectares	Completed
Cuckoo Oak					
	W2016/0289	93 Hills Lane Drive, Madeley, Telford, Shropshire, TF7 4BY	FE		1
Donnington					
	W2014/0621	The Acorns, St Georges Road, Donnington Wood, Telford, Shropshire, TF2 7NJ	FR	0.00	-1
	W2016/0244	Site of 1 Wellington Road, Donnington, Telford, Shropshire	FR		-1
	W2015/0060	Site of Coddon Sports and Social Club, Wellington Road, Donnington, Telford, Shropshire	OB	0.00	29
Dothill					
	W2016/0713	1-8 Burway Flats, Severn Drive & 1-8 Dee Close, Dothill, Telford, Shropshire	FR		-16
Edgmond					
	W2014/0619	Sambrook Manor Farm, Sambrook, Telford, Shropshire, TF10 8AL	FE	0.00	2
	W2013/0081	Land between, 43 & 44 Back Lane, Tibberton, Newport, Shropshire	FR		1
	W2015/0262	Site of 10 Marsh Road, Edgmond, Newport, Shropshire	GR	0.00	1
	W2015/0395	Land adjacent The Hollies, 46 Cherrington Lane, Tibberton, Newport, Shropshire	GR	0.00	2
	W2016/0086	Land adjacent 48 Shrewsbury Road, Edgmond, Newport, Shropshire	GR	0.00	1
	W2014/0401	Land adjacent Ingleside, 1 Edgmond Road, Newport, Shropshire	GR	0.00	38
	W2016/0574	Flat 1, 2 & 3, Stag House, Cherrington Road, Tibberton, Newport, Shropshire, TF10 8NY	OB		-3
	W2016/1189	Deepdale Farm, Chester Road, Chetwynd, Newport, Shropshire, TF10 8BH	OB		1
	W2016/0574	Flat 1, 2 & 3, Stag House, Cherrington Road, Tibberton, Newport, Shropshire, TF10 8NY	OB		1
Ercall					
	W2014/0153	Former Telford & Wrekin Council Offices, Highfield House, 47 Wrekin Road, Wellington, Telford, Shropshir	FE	0.00	4
	W2014/0153	Former Telford & Wrekin Council Offices, Highfield House, 47 Wrekin Road, Wellington, Telford, Shropshir	FE	0.00	10

FR - Former Residential FE - Former Employment OB - Other Brownfield GR - Greenfield

Ward Name

Application No	Address	Previous Use	Hectares	Completed
W2013/0938	Land off Holyhead Road, Wellington, Telford, Shropshire, TF6 5AB	GR	0.00	94
W2014/0370	Land off Limekiln Lane, Arleston, Telford, Shropshire, TF1 2JT	GR	0.00	14
W2016/0146	The Mount, Haygate Road, Wellington, Telford, Shropshire, TF1 1QZ	OB		1
W2013/0265	The Mount, 1 Haygate Road, Wellington, Telford, Shropshire	OB	0.00	2

Ercall Magna

W2014/0722	Land adjacent Kynnersley Manor, Kynnersley, Telford, Shropshire, TF6 6DY	FE	0.00	2
W2016/0447	Walton Hall, Walton, Telford, Shropshire, TF6 6AR	FR		1
W2015/0319	Poultry Unit, Osbaston, Telford, Shropshire	GR	0.00	1
W2013/0693	Land adjacent to 8 Heath Court, Cliff Crescent, Ellerdine, Telford, Shropshire	GR	0.00	2
W2015/0350	Seven Stars Inn, Cold Hatton, Telford, Shropshire, TF6 6QH	OB	0.00	1

Hadley and Leegomery

W2013/0720	Land at, Sommerfeld Road, Hadley, Telford, Shropshire,	FE	6.04	38
W2016/0085	Garages to 63,65 & 65A Blockley Road, Hadley, Telford, Shropshire	FR	0.00	1
W2015/0756	23 Haybridge Road, Hadley, Telford, Shropshire, TF1 5LR	FR	0.00	-1
W2015/0337	Land north of Okehampton Road, Leegomery, Telford, Shropshire,	GR	0.00	2
W2014/0221	Former Blockleys Brick Ltd, Land off Sommerfeld Road, Trench Lock, Telford, Shropshire, TF1 5RY	GR	0.00	22
W2015/0593	Land adjacent The Brambles, Horton Lane, Horton, Telford, Shropshire	GR	0.00	1
W2015/0402	Land adjacent The Brambles, Horton Lane, Horton, Telford, Shropshire	GR	0.00	1
W2015/0059	Land Adjacent Dairy Farm House, Horton, Telford, Shropshire,	GR	0.00	1
W2015/0058	Land North of, Okehampton Road, Leegomery, Telford, Shropshire,	GR	0.00	22
W2014/0769	Land Off, Hadley Park West, Hadley, Telford, Shropshire	GR	0.00	37

FR - Former Residential FE - Former Employment OB - Other Brownfield GR - Greenfield

Ward Name

Application No	Address	Previous Use	Hectares	Completed
----------------	---------	--------------	----------	-----------

W2013/1003	Land at Hadley Park West, (off Okehampton Road), Leegomery, Telford, Shropshire,	GR	7.12	23
W2014/0796	Land North of, Okehampton Road, Leegomery, Telford, Shropshire	GR	0.00	11

Haygate

W2016/0893	15 Queen Street, Wellington, Telford, Shropshire, TF1 1EH	FE		1
W2015/0143	Former Arriva North Bus Garage, Charlton Street, Wellington, Telford, Shropshire	OB	0.00	31
W2015/0348	29 - 31 Church Street, Wellington, Telford, Shropshire, TF1 1DG	OB	0.00	1

Horsehay and Lightmoor

W2014/0258	Land adjacent Lightmoor View, Brick Kiln Bank, Lightmoor, Telford, Shropshire	FE		30
W2011/0506	Land at Lightmoor, Phases 3 & 4, Telford, Shropshire.	GR	2.34	7
W2014/0237	Land at Doseley Works, Doseley, Telford, Shropshire, TF4 3BX	GR	0.00	44
W2012/0419	Lawley Phase 6, Dawley Road, Lawley , Telford, Shropshire.	GR	11.05	79
W2012/0292	Horsehay Limited, Horsehay House, Bridge Road, Horsehay, Telford, Shropshire, TF4 3PY	OB	0.13	2

Ironbridge Gorge

W2008/0473	Former Dale End Garage, Dale Road, Coalbrookdale, Telford, Shropshire.	FE	0.17	4
W2015/0102	The Parish Room, Madeley Road, Ironbridge, Telford, Shropshire, TF8 7PP	FR	0.00	1
W2015/0265	Land adjacent and rear of The Crown Inn, 10 Hodge Bower, Ironbridge, Telford, Shropshire	GR	0.00	5
W2015/0656	Former Dale End Garage, Dale End, Ironbridge, Telford, Shropshire	GR	0.00	3
W2014/0624	Former Dale End Garage, Dale End, Coalbrookdale, Telford, Shropshire	OB	0.00	2
W2015/0919	3 Southside, Church Hill, Ironbridge, Telford, Shropshire, TF8 7PZ	OB		-1

Ketley and Oakengates

W2011/1037	The Walker Institute, Hartsbridge Road, Oakengates, Telford, Shropshire, TF2 6BA	GR	0.43	8
------------	--	----	------	---

FR - Former Residential FE - Former Employment OB - Other Brownfield GR - Greenfield

Ward Name

Application No	Address	Previous Use	Hectares	Completed
W2016/0035	Site of 9 Cow Wood, Red Lake, Telford, Shropshire	GR	0.00	1
W2013/0096	Ketley Millennium Village, Holyhead Road, Ketley, Telford, Shropshire	OB	11.09	59
W2013/0995	Maddocks Sports & Social Club, Church Street, Oakengates, Telford, Shropshire, TF2 6BP	OB	0.00	20

Lawley and Overdale

W2015/0233	Lawley Phase 8, Lawley, Telford, Shropshire	GR	0.00	108
W2011/0488	Phases 3 & 4 Lawley Village, Lawley Drive, Lawley, Telford,	GR	25.98	3
W2006/0818	Land adjacent, 3, Station Road, Lawley Bank	OB	0.20	1

Madeley

W2011/0960	Land to rear of , 25 Coronation Crescent, Madeley, Telford, Shropshire, TF7 5EQ	FR	0.00	3
W2013/0917	Land adjacent, 2 Wrekin View, Madeley, Telford, Shropshire, TF7 5HY	GR	0.00	2
W2016/0237	Land to the rear and side of 71 High Street, Madeley, Telford, Shropshire	GR		2
W2013/0145	Land to the rear of 1 and 2 Coronation Crescent, Madeley, Telford, Shropshire	GR	0.00	1
W2014/0338	Telford & Wrekin NHS Primary Care Trust, 66 - 67 High Street, Madeley, Telford, Shropshire, TF7 5AU	OB	0.02	2
W2016/0967	44 and 45, Park Street, Madeley, Telford, Shropshire, TF7 5LD	OB		-1

Malinslee

W2015/0492	Land adjacent, 16 Brunel Road, Dawley, Telford, Shropshire	GR	0.00	4
W2014/1137	Land rear of 30 - 35, Bank Road, Dawley Bank, Telford, Shropshire	GR	0.00	1
W2016/0534	Argyll House, Bank Road, Dawley Bank, Telford, Shropshire, TF4 2BB	OB		-1
W2016/0494	2 - Brunel Road, Dawley, Telford, Shropshire, TF4 2SD	OB	0.00	-12
W2015/0467	Site of 1-4 The Hollow, King Street, Dawley, Telford, Shropshire	OB	0.00	4
W2016/0493	1-4 The Hollow, King Street, Dawley, Telford, Shropshire, TF4 2AD	OB	0.00	-4

FR - Former Residential FE - Former Employment OB - Other Brownfield GR - Greenfield

Ward Name	Application No	Address	Previous Use	Hectares	Completed
Muxton					
	W2014/1056	Site of The Cottage, Wellington Road, Muxton, Telford, Shropshire	FR	0.00	9
Newport East					
	W2013/0353	Land adjacent, 31 Water Lane, Newport, Shropshire, TF10 7LD	GR	0.00	1
	W2016/0304	18 - 24 Meadow Road, Newport, Shropshire, TF10 7TG	OB		-4
Newport North					
	W2016/0154	Site of The Bays, 69 Forton Road, Newport, Shropshire	FR		2
	W2016/0154	Site of The Bays, 69 Forton Road, Newport, Shropshire	FR		-1
	W2014/0036	Kings Head Mobile Home Park, Green Lane, Newport, Shropshire	GR	0.00	8
Newport South					
	W2014/0333	Land corner of, Stafford Road/A41, Newport, Shropshire	FE	4.87	43
	W2015/0375	Land adjacent, 2 The Oaklands, Springfields, Newport, Shropshire	GR	0.00	5
Newport West					
	W2016/0059	Phase 4, Land North, East & South of Aston Grove, off Wellington Road, Newport, Shropshire	FE		34
	W2015/0518	Phase 3, Land North, East & South of Aston Grove, off Wellington Road, Newport, Shropshire	GR	0.00	24
	W2016/0372	23 Hawkstone Avenue, Newport, Shropshire, TF10 7SE	OB		2
	W2016/0372	23 Hawkstone Avenue, Newport, Shropshire, TF10 7SE	OB		-1
Park					
	W2014/0383	The Centre for Positive Health, 11-13 Whitchurch Road, Wellington, Telford, TF1 3DS	OB	0.00	8
Priorslee					
	W2014/0526	Land off, St Georges Bypass, Snedshill Way, St Georges, Telford	GR	0.00	17
	W2014/0656	Land Adjacent Stone House, Shifnal Road, Priorslee, Telford, Shropshire	GR	0.00	6

FR - Former Residential FE - Former Employment OB - Other Brownfield GR - Greenfield

Ward Name

	Application No	Address	Previous Use	Hectares	Completed
St. Georges	W2015/0028	Land rear of 10-21, Frome Way, Donnington, Telford, Shropshire	GR	0.00	54
	W2015/0453	Merrington, Moss Road, Wrockwardine Wood, Telford, Shropshire	FR	0.00	1
	W2014/0736	The Red Lion Inn, New Road, Wrockwardine Wood, Telford, Shropshire, TF2 7AA	OB	0.00	2
	W2015/0273	63 New Road, Wrockwardine Wood, Telford, Shropshire, TF2 7AA	OB	0.00	1
The Nedge					
	W2014/1122	Land junction of Stirchley Avenue/Randlay Avenue, Randlay, Telford, Shropshire	GR	0.00	16
Woodside					
	W2014/1124	Former Woodlands Primary School, Ironbridge Road, Madeley, Telford, Shropshire	EDU	0.00	101
	W2014/0168	Land at, Park Lane, Woodside, Telford, Shropshire,	FR	0.00	4
	W2014/0323	Rough Park House, Woodside Avenue, Woodside, Telford, Shropshire, TF7 5PG	FR	0.00	5
	W2009/0051	Land at, Park Lane, Woodside, Telford, Shropshire.	OB	4.23	27
Wrockwardine					
	W2014/0429	A B C Day Nursery, The Village School, Wrockwardine, Telford, Shropshire, TF6 5DG	EDU	0.00	2
	W2015/0365	The Wharf House, Rodington, Telford, Shropshire, SY4 4QL	FR	0.00	1
	W2008/0587	Plot 3, Land off, Elmsdale Crescent, Admaston, Telford, Shropshire.	GR	0.16	1
	W2013/0649	Land to rear of Holly Acres, Long Lane, Telford, Shropshire TF6 6HD	GR	0.00	1
	W2014/0570	Land West of Loft House Barn, Rodington, Telford, Shropshire	GR	0.00	2
	W2015/0192	Site of Windhover, Buildwas Lane, Little Wenlock, Telford, Shropshire	GR	0.00	1
	W2015/0904	Land adjacent Gwenlas, Walcot, Telford, Shropshire	GR	0.00	1
	W2013/0436	Yew Tree House, Drummery Lane, Wrockwardine, Telford, Shropshire, TF6 5DH	OB	0.00	1

FR - Former Residential

FE - Former Employment

OB - Other Brownfield

GR - Greenfield

Ward Name

	Application No	Address	Previous Use	Hectares	Completed
Wrockwardine Wood					
	W2016/0567	9 - 32 Gordon Road, Trench, Telford, Shropshire	FR	0.00	-24
Wrockwardine Wood and Trench					
	W2015/0819	Site of The Trench Tavern, Trench Road, Trench, Telford, Shropshire	OB	0.00	2
TOTALS				73.82	1,148

FR - Former Residential FE - Former Employment OB - Other Brownfield GR - Greenfield

Appendix 2 - Residential Sites Under Construction and Plots Started 2016/17

Ward Name	Application	Address	Previous Use	Ha	Total Comp	Comp 16/17	Not Started	Started
CHANGE OF USE DETERMINATION PRIO								
Haygate	W2015/0801	22 Market Street, Wellington, Telford, Shropshire, TF1 1DT	OB	0.00	0	0	0	6
Muxton	W2015/0597	Abbey Farm, Abbey Road, Lilleshall, Newport, Shropshire, TF10 9HW	GR	0.00	0	0	0	1
					0	0	0	7
FULL GRANTED								
	W2016/0259	Site of 18, 20, 22 & 24 Meadow Road, Newport, Shropshire	FR		0	0	0	4
	W2016/1048	Land adjacent Endeavor, 63 Limekiln Lane, Lilleshall, Newport, Shropshire, TF10 9EY	GR		0	0	0	1
Arleston	W2016/0875	Land rear of 18-22 John Broad Avenue, Arleston, Telford, Shropshire	OB		0	0	0	2
Church Aston and Lilleshall								
	W2013/0312	9 Woodcote, Telford, Shropshire, TF10 9BW	GR		0	0	0	4
	W2016/0034	Amber House, Littlehales Road, Chetwynd Aston, Newport, Shropshire, TF10 9BF	GR	0.00	0	0	1	1
College								
	W2015/0905	Park House, 41 Park Street, Wellington, Telford, Shropshire, TF1 3AE	FE	0.00	0	0	0	1
	W2008/0227	Land at, Urban Gardens, Wellington, Telford, Shropshire.	OB	0.06	0	0	0	3
	W2010/0487	Charlton Arms Hotel, Church Street, Wellington, Telford, Shropshire, TF1 1DG	OB	0.00	0	0	30	11
	W2013/0306	27-31 High Street, Wellington, Telford, Shropshire, TF1 1JW	OB	0.00	0	0	0	12
	W2015/1022	13 Market Square, Wellington, Telford, Shropshire, TF1 1BU	OB		0	0	0	1
Dawley Magna								
	W2015/0217	Site A, Pool Hill Road, Horsehay, Telford, Shropshire	GR	0.00	0	0	0	14
	W2015/0618	Site of, 15 New Street, Dawley, Telford, Shropshire	GR	0.00	0	0	0	1
Donnington								
	W2016/0244	Site of 1 Wellington Road, Donnington, Telford, Shropshire	FR		-1	-1	0	8
	FR - Former Residential	FE - Former Employment	OB - Other Brownfield	GR - Greenfield				

Ward Name	Application	Address	Previous Use	Ha	Total Comp	Comp 16/17	Not Started	Started
	W2016/0199	Land corner of Queens Road/Church Road, Donnington, Telford, Shropshire	OB		0	0	0	7
	W2015/0978	Site of 72B Furnace Lane, Trench, Telford, Shropshire	OB		0	0	0	6
Dothill								
	W2016/0786	Site of 1 - 8 Burway Flats, Severn Drive & 1 - 8 Dee Close, Dothill, Telford, Shropshire	FR		0	0	0	12
Edgmond								
	W2014/0718	The Old Brick Yard, Cherrington, Newport, Shropshire	FE	0.00	0	0	1	0
	W2014/0808	12 Marsh Road, Edgmond, Newport, Shropshire, TF10 8EP	FR	0.00	0	0	0	1
	W2015/0951	Land adjacent 81 Newport Road, Edgmond, Newport, Shropshire	GR	0.00	0	0	0	1
	W2015/0784	Land West Of Beech Hill, Edgmond Road, Newport, Shropshire	GR	0.00	0	0	0	3
	W2012/0961	Land at, Orchard House, Tibberton, Newport, Shropshire	GR		0	0	0	10
	W2014/0389	54 Newport Road, Edgmond, Newport, Shropshire, TF10 8HE	GR	0.00	0	0	0	1
	W2014/0981	Swn Y Coed, Tibberton, Newport, Shropshire, TF10 8NN	GR	0.00	0	0	0	1
Ercall								
	W2013/0938	Land off Holyhead Road, Wellington, Telford, Shropshire, TF6 5AB	GR	0.00	62	31	3	12
Ercall Magna								
	W2016/0986	Eyton Hall, The Coach House, Eyton, Telford, Shropshire	FR		0	0	0	1
	W2007/0986	22, Waters Upton	FR	0.10	-1	0	1	0
	W2014/0661	Hillcrest, Sytch Lane, Waters Upton, Telford, Shropshire, TF6 6NR	FR	0.14	0	0	0	1
	W2014/0993	The Firs, Rowton, Telford, Shropshire, TF6 6QY	FR	0.00	0	0	0	0
	W2014/1093	Site of Lyndale, Middle Lane, Cold Hatton Heath, Telford, Shropshire	FR	0.00	-1	0	0	1
	W2015/0469	Builders Yard and land adjacent Fair View, Stars Lane, Cold Hatton, Telford, Shropshire	GR	0.00	0	0	0	2
	W2015/0462	Land South Of Sunnyside Farm, Ellerdine Heath, Telford, Shropshire,	GR	0.00	0	0	0	1
	W2014/0733	Land South of White House Farm, Cold Hatton, Telford, Shropshire	GR	0.00	0	0	1	1
	W2013/0693	Land adjacent to 8 Heath Court, Cliff Crescent, Ellerdine, Telford, Shropshire	GR	0.00	2	2	0	10
	W2015/0868	Land West of Alport, Middle Lane, Cold Hatton, Telford, Shropshire	GR	0.00	0	0	0	1
Hadley and Leegomery								
	W2012/0493	Land To The Rear Of 26a-32, Mafeking Road, Hadley, Telford, Shropshire,	FR	0.00	0	0	0	4
	W2014/0765	1-3 Castle Lane, Hadley, Telford, Shropshire, TF1 6RD	FR	0.00	-1	0	0	11
	W2016/0527	Site of Beveley House, 82 Beveley Road, Oakengates, Telford, Shropshire	GR		0	0	0	1

FR - Former Residential FE - Former Employment OB - Other Brownfield GR - Greenfield

Ward Name	Application	Address	Previous Use	Ha	Total Comp	Comp 16/17	Not Started	Started
	W2009/0546	5, Castle Street, Hadley, Telford, Shropshire.	GR	0.02	0	0	0	2
	W2015/0225	Land South of, 52 Horton Lane, Horton, Telford, Shropshire	GR	0.00	0	0	1	1
	W2016/0351	Land adjacent 43 Hadley Park Road, Hadley, Telford, Shropshire	GR		0	0	0	1
Haygate								
	W2016/0428	Land adjacent The Croft, Haygate Road, Wellington, Telford, Shropshire	GR		0	0	0	1
	W2015/0662	11 - 13 Crown Street, Wellington, Telford, Shropshire, TF1 1LP	OB	0.00	0	0	0	2
	W2014/1098	23 Walker Street, Wellington, Telford, Shropshire, TF1 1BD	OB	0.00	0	0	4	6
Horsehay and Lightmoor								
	W2012/0851	Land adjacent to, 34, Wellington Road, Horsehay, Telford, Shropshire.	FR	0.09	0	0	0	1
	W2014/0182	1 Glendale, Lawley Village, Telford, Shropshire, TF4 2PJ	FR	0.00	0	0	0	1
	W2011/0993	Land adjacent, 4 St Lukes Road, Doseley, Telford, Shropshire, TF4 3BE	GR	0.00	0	0	0	1
	W2014/0998	Land adjacent Windermere House, Farm Lane, Horsehay, Telford, Shropshire	GR	0.00	0	0	3	10
	W2015/0515	Land adjacent Greenhurst, 14 St Lukes Road, Doseley, Telford, Shropshire,	GR	0.00	0	0	0	1
	W2012/0981	The Finney, 13 Burroughs Bank, Lightmoor, Telford, Shropshire, TF4 3QS	OB	0.16	0	0	0	1
Ironbridge Gorge								
	W2013/0961	Garage/annex adjacent to, Laburnum Cottage, Woodlands Road, Ironbridge, Telford, Shrops	FR	0.00	0	0	1	0
	W2016/0091	Land adjacent The Old Toll House, High Street, Coalport, Telford, Shropshire	GR		0	0	0	1
	W2015/0924	Land adjacent & rear of Benbrook, Strethill Road, Coalbrookdale, Telford, Shropshire	GR	0.00	0	0	0	1
	W2015/0672	Site of Woodlands Farm, Beech Road, Ironbridge, Telford, Shropshire	GR	0.00	0	0	0	2
	W2012/0485	Land Adjacent To, Humay, Hodge Bower, Ironbridge, Telford, Shropshire, TF8 7QQ	GR	0.00	0	0	0	1
	W2014/0212	The Grove Inn, Wellington Road, Coalbrookdale, Telford, Shropshire, TF8 7DX	OB	0.00	0	0	0	7
	W2015/0919	3 Southside, Church Hill, Ironbridge, Telford, Shropshire, TF8 7PZ	OB		-1	-1	0	0
Ketley and Oakengates								
	W2013/0222	7 Oxford Street, Oakengates, Shropshire	FE	0.20	0	0	1	0
	W2014/0531	Land to the rear of Bush House, Mossey Green, Ketley Bank, Telford, Shropshire	GR	0.00	0	0	0	1
	W2014/0094	Land adjacent, 9 Weavers Rise, Ketley Bank, Telford, Shropshire	GR	0.00	0	0	0	1
	W2016/1077	Woodland House, Sunnyside Road, Ketley Bank, Telford, Shropshire, TF2 0AA	GR		0	0	0	1
	W2013/0096	Ketley Millennium Village, Holyhead Road, Ketley, Telford, Shropshire	OB	11.09	168	59	151	19
	W2011/0769	The Homelands, Mossey Green, Ketley Bank, Telford, Shropshire, TF2 0DN	OB		3	0	10	0

FR - Former Residential

FE - Former Employment

OB - Other Brownfield

GR - Greenfield

Ward Name	Application	Address	Previous Use	Ha	Total Comp	Comp 16/17	Not Started	Started
	W2009/0215	3, Holyhead Road, Oakengates, Telford, Shropshire.	OB	0.07	-1	0	0	2
Lawley and Overdale								
	W2015/0177	Land off Park Road/Royal Way, Malinslee, Telford, Shropshire	GR	0.00	0	0	0	81
Madeley								
	W2016/0237	Land to the rear and side of 71 High Street, Madeley, Telford, Shropshire	GR		2	2	1	1
Malinslee								
	W2015/0997	Former Malinslee Primary School, Matlock Avenue, Dawley, Telford, Shropshire	EDU	0.00	0	0	68	24
	W2014/0329	Land adjacent Yeatesville, 15 St. Leonards Road, Malinslee, Telford, Shropshire	GR	0.00	0	0	0	1
Newport North								
	W2014/0036	Kings Head Mobile Home Park, Green Lane, Newport, Shropshire	GR	0.00	12	8	0	2
Newport South								
	W2014/0333	Land corner of, Stafford Road/A41, Newport, Shropshire	FE	4.87	75	43	12	24
	W2016/0577	Land adjacent 10 Primrose Drive, Church Aston, Newport, Shropshire	GR		0	0	0	1
Newport West								
	W2012/0916	Land adjacent 17, Water Lane, Newport, Shropshire	FE		0	0	12	0
	W2016/0203	Land rear of 23 High Street, Newport, Shropshire	FE		0	0	0	5
Priorslee								
	W2014/0656	Land Adjacent Stone House, Shifnal Road, Priorslee, Telford, Shropshire	GR	0.00	6	6	0	8
	W2016/0162	Land North of, Keepers Crescent & Daisy Bank Drive, St Georges, Telford, Shropshire	GR		0	0	32	8
	W2012/0243	The Hollies, Priorslee Village, Telford, Shropshire, TF2 9NW	GR		0	0	1	1
St. Georges								
	W2013/0053	Land adjacent, 14 The Nabb, St Georges, Telford, Shropshire, TF2 9BY	GR	0.00	0	0	0	3
	W2015/0116	Land adjacent, 2 Moss Road, Wrockwardine Wood, Telford, Shropshire	GR	0.35	0	0	0	2
	W2012/0993	Land adjacent 80, Freeston Avenue, St Georges, Telford, Shropshire,	GR	0.00	0	0	0	2
	W2014/0736	The Red Lion Inn, New Road, Wrockwardine Wood, Telford, Shropshire, TF2 7AA	OB	0.00	2	2	0	2
The Nedge								
	W2009/0326	Randlay Centre, Randlay Community Centre, Randlay, Telford, Shropshire.	OB	1.41	6	0	12	0

FR - Former Residential

FE - Former Employment

OB - Other Brownfield

GR - Greenfield

Ward Name	Application	Address	Previous Use	Ha	Total Comp	Comp 16/17	Not Started	Started
Woodside								
	W2014/0323	Rough Park House, Woodside Avenue, Woodside, Telford, Shropshire, TF7 5PG	FR	0.00	5	5	0	18
Wrockwardine								
	W2014/0429	A B C Day Nursery, The Village School, Wrockwardine, Telford, Shropshire, TF6 5DG	EDU	0.00	2	2	2	0
	W2015/0024	The Piggeries, Grove Lane, Rodington, Telford, Shropshire	FE	0.00	0	0	0	1
	W2010/0017	Land at, Isombridge Farm, Isombridge, Shropshire.	GR	0.09	0	0	0	1
	W2013/0649	Land to rear of Holly Acres, Long Lane, Telford, Shropshire TF6 6HD	GR	0.00	2	1	0	10
	W2014/0065	Land adjacent, 10 Rushmoor, Telford, Shropshire	GR	0.00	0	0	0	2
	W2014/0805	The Patch, Land opposite 4 High Point, Little Wenlock, Telford, Shropshire, TF6 5BT	GR	0.00	0	0	1	1
	W2016/0521	Land adjacent 3 Charlton, Telford, Shropshire	GR		0	0	0	1
	W2016/1179	Site of Millcroft, Walcot, Telford, Shropshire	GR		0	0	0	1
Wrockwardine Wood and Trench								
	W2016/0615	Site of 9-32 & Garages, Gordon Road, Trench, Telford, Shropshire	FR		0	0	0	31
	W2010/0593	The Former Methodist Chapel, Chapel Terrace, Wrock	OB	0.00	1	0	4	0
					342	159	353	446
FULL REFUSED								
Ercall Magna								
	W2008/0059	TERN FARM, LONGDON-ON-TERN	GR	1.01	0	0	7	0
					0	0	7	0
RESERVED MATTERS GRANTED								
Arleston								
	W2015/0577	Land between 5 and 6 Forester Grove, Arleston, Telford, Shropshire	GR	0.00	0	0	0	4
Church Aston and Lilleshall								
	W2017/0086	Land adjoining St Lawrences Church, Preston upon the Weald Moors, Telford, Shropshire	FR		0	0	0	1
	W2015/0354	Land adjacent 13 Primrose Drive, Church Aston, Newport, Shrosphire	GR	0.00	0	0	0	1
	W2015/0151	Land adjacent The Barns, Church Aston, Newport, Shropshire	GR	0.00	21	18	0	5
	W2014/0906	Land adjacent 57 Limekiln Lane, Lilleshall, Newport, Shropshire	GR	0.00	0	0	0	1
	W2016/1138	Land adjacent Middle Farm, Off Field Aston Lane, Newport, Shropshire	OB		0	0	0	5
FR - Former Residential		FE - Former Employment	OB - Other Brownfield	GR - Greenfield				

Ward Name	Application	Address	Previous Use	Ha	Total Comp	Comp 16/17	Not Started	Started
Edgmond								
	W2014/0401	Land adjacent Ingleside, 1 Edgmond Road, Newport, Shropshire	GR	0.00	73	38	0	12
	W2016/0767	Land adjacent Grangefields, Hay Street, Tibberton, Newport, Shropshire	GR		0	0	0	2
	W2016/1184	Land adjacent 56 Shrewsbury Road, Edgmond, Newport, Shropshire	GR		0	0	0	1
	W2016/0624	Site of 1 Tea Kettle Row, Plantation Road, Tibberton, Newport, Shropshire	GR		0	0	0	1
	W2016/0249	Land adjacent Grangefields, Hay Street, Tibberton, Newport, Shropshire	GR		0	0	0	1
	W2016/0086	Land adjacent 48 Shrewsbury Road, Edgmond, Newport, Shropshire	GR	0.00	1	1	0	1
	W2015/0628	Land North Of The Lilacs, Longwithy Lane, Edgmond, Newport, Shropshire	GR	0.00	0	0	0	1
Ercall Magna								
	W2014/0888	Land adjacent to The Old Rectory, Waters Upton, Shropshire.	GR	0.00	0	0	0	7
Hadley and Leegomery								
	W2013/0720	Land at, Sommerfeld Road, Hadley, Telford, Shropshire,	FE	6.04	112	38	0	13
	W2014/0796	Land North of, Okehampton Road, Leegomery, Telford, Shropshire	GR	0.00	51	11	5	0
	W2015/0058	Land North of, Okehampton Road, Leegomery, Telford, Shropshire,	GR	0.00	22	22	3	3
	W2013/1003	Land at Hadley Park West, (off Okehampton Road), Leegomery, Telford, Shropshire,	GR	7.12	91	23	1	27
	W2014/0769	Land Off, Hadley Park West, Hadley, Telford, Shropshire	GR	0.00	68	37	0	0
	W2014/0221	Former Blockleys Brick Ltd, Land off Sommerfeld Road, Trench Lock, Telford, Shropshire, T	GR	0.00	40	22	3	17
	W2014/0756	Land adjacent 1-3 Castle Lane, Hadley, Telford, Shropshire	GR	0.00	0	0	0	3
Horsehay and Lightmoor								
	W2012/0419	Lawley Phase 6, Dawley Road, Lawley , Telford, Shropshire.	GR	11.05	373	79	7	8
	W2014/1072	Land north of Lightmoor Way, Lightmoor Village, Telford, Shropshire	GR	0.00	0	0	172	28
	W2014/0237	Land at Doseley Works, Doseley, Telford, Shropshire, TF4 3BX	GR	0.00	61	44	104	17
	W2016/0660	Lawley Phase 7, Lawley, Telford, Shropshire	OB		0	0	245	22
Lawley and Overdale								
	W2015/0233	Lawley Phase 8, Lawley, Telford, Shropshire	GR	0.00	108	108	360	93
	W2011/0488	Phases 3 & 4 Lawley Village, Lawley Drive, Lawley, Telford,	GR	25.98	432	3	0	3
Newport West								
	W2016/0059	Phase 4, Land North, East & South of Aston Grove, off Wellington Road, Newport, Shropshir	FE		34	34	62	38
	W2013/0928	Phase 1, Land off Wellington Road, Newport, Shropshire	GR	3.47	59	0	2	0
	FR - Former Residential	FE - Former Employment	OB - Other Brownfield	GR - Greenfield				

Ward Name	Application	Address	Previous Use	Ha	Total Comp	Comp 16/17	Not Started	Started
Priorslee								
	W2015/0028	Land rear of 10-21, Frome Way, Donnington, Telford, Shropshire	GR	0.00	54	54	0	25
Wrockwardine								
	W2015/0438	Land North of Dunelm, Rodington Heath, Telford, Shropshire	GR	0.00	0	0	0	6
	W2012/0895	Land Adjacent 17, Charlton, Telford, Shropshire, TF6 5EH	OB	0.00	0	0	2	0
					1600	532	966	346
TOTALS				73.32	1,942	691	1,326	799

FR - Former Residential FE - Former Employment OB - Other Brownfield GR - Greenfield

Appendix 3 - Residential Sites with Plots Not Started 2016/17

Ward Name	Application No	Address	Previous Use	Hectares	Not Started
CHANGE OF USE DETERMINATION PRIOR APPROVAL					
Church Aston and Lilleshall					
	TWC/2015/0117	Pave Lane Farm, Pitchcroft Lane, Woodcote, Newport, Shropshire, TF10 9AX	FR	0.00	1
College					
	TWC/2014/0567	2-4 Park Street, Wellington, Telford, Shropshire, TF1 3AE	OB		8
Edgmond					
	TWC/2015/0908	Barn at Hay House, 12 Tibberton, Newport, Shropshire	FE	0.00	1
Ercall Magna					
	W2016/0223	Aquadale Farm, Crudgington Moor Road, Crudgington, Telford, Shropshire, TF6 6JX	OB		1
Muxton					
	TWC/2015/0597	Abbey Farm, Abbey Road, Lilleshall, Newport, Shropshire, TF10 9HW	FR	0.00	1
Borough				0	12
CHANGE OF USE DETERMINATION PRIOR APPROVAL NOT REQ					
Ketley and Oakengates					
	TWC/2015/0111	Hawk House, 4 Hawksworth Road, Central Park, Telford, Shropshire, TF2 9TU	FE	0.00	12
Newport South					
	TWC/2015/1015	Parkland House, Audley Avenue Industrial Park, Audley Avenue, Newport, Shropshire	OB	0.00	6
Borough				0	18

FR - Former Residential FE - Former Employment OB - Other Brownfield GR - Greenfield

Ward Name	Application No	Address	Previous Use	Hectares	Not Started
DEMOLITION DETERMINATION PERMITTED DEVELOPMENT					
Ketley and Oakengates					
	TWC/2015/0851	Rose Cottage, Hadley Road, Oakengates, Telford, Shropshire, TF2 6HL	FR	0.00	-1
Lawley and Overdale					
	TWC/2016/0152	Site of 1 to 30 Powis Place, Dawley Bank, Telford, Shropshire	FR	0.00	-30
Borough				0	-31

FR - Former Residential FE - Former Employment OB - Other Brownfield GR - Greenfield

Ward Name	Application No	Address	Previous Use	Hectares	Not Started
FULL GRANTED					
Apley Castle					
	TWC/2016/0137	Site of 8 Greenfinch Close, Apley, Telford, Shropshire	GR		1
Brookside					
	TWC/2016/0485	The Old Rectory, Stirchley Village, Telford, Shropshire, TF3 1DY	OB		1
Church Aston and Lilleshall					
	TWC/2013/0855	Land to the rear of Willow Tree Cottage, Station Road, Newport, Shropshire	GR		50
	TWC/2016/0121	Site of, Tessant House, Dark Lane, Church Aston, Newport, Shropshire	GR		1
	TWC/2015/0188	Land adjacent 7 Hillside, Lilleshall, Newport, Shropshire	GR	0.00	1
	TWC/2016/0034	Amber House, Littlehales Road, Chetwynd Aston, Newport, Shropshire, TF10 9BF	GR	0.00	1
	TWC/2016/0186	Brockton Leasows Manor, Wellington Road, Lilleshall, Newport, Shropshire, TF10 9AG	OB		1
	TWC/2014/0492	Lubstree Park, Humber Lane, Telford, Shropshire, TF2 8LW	FE	0.00	8
College					
	TWC/2010/0487	Charlton Arms Hotel, Church Street, Wellington, Telford, Shropshire, TF1 1DG	OB	0.00	30
	TWC/2016/1029	Land adjacent Mill Cottage, Mill Lane, Wellington, Telford, Shropshire	FR		4
	TWC/2016/0856	37 Park Street, Wellington, Telford, Shropshire TF1 3AE	OB		4
Cuckoo Oak					
	TWC/2016/0460	Site of Wendover, Hills Lane, Madeley, Telford, Shropshire	FR		5
	TWC/2016/1192	Site of 26 - 42 (even), 19 - 35 (odds) Brook Road, 10 - 26 (even), 13 - 29 (odds) Oak Close, 1	FR		35
Dawley Magna					
	TWC/2016/0947	2 Southall, Dawley, Telford, Shropshire, TF4 3NE	OB		2
	TWC/2015/0491	Site of 13 Hamilton Road, Dawley, Telford, Shropshire	FR		1
	TWC/2016/0842	Lord Hill Inn, High Street, Dawley, Telford, Shropshire, TF4 2EX	OB		1
Donnington					
	TWC/2015/0259	Former Lusaka, Church Road, Donnington, Telford, Shropshire	FR	0.00	3
	TWC/2015/0874	Land adjacent, 12 Jubilee Avenue, Donnington, Telford, Shropshire	GR	0.00	1

FR - Former Residential FE - Former Employment OB - Other Brownfield GR - Greenfield

Ward Name	Application No	Address	Previous Use	Hectares	Not Started
Edgmond	TWC/2014/0689	Land adjacent Furnace House Guest House 64 Furnace Lane, Trench, Telford, Shropshire	GR	0.00	1
	TWC/2016/0150	Land adjacent 12 Tibberton, Newport, Shropshire	GR		2
	TWC/2016/0311	Site of, 10 Chetwynd Road, Edgmond, Newport, Shropshire,	GR		1
	TWC/2014/0674	Adeney Manor, Adeney, Newport, Shropshire, TF10 8LY	OB	0.00	2
	TWC/2014/1134	Land opposite The Priory, Newport Road, Edgmond, Newport, Shropshire	GR	0.00	1
	TWC/2016/0316	Land North of Sewage Treatment Works, Broomfield Road, Newport, Shropshire	GR		33
	TWC/2015/1079	Agricultural buildings adjacent Sambrook Hall Farm, Sambrook, Newport, Shropshire	OB		2
	TWC/2016/0973	Land rear of The Cottage, 2 Cheney Hill, Edgmond Road, Newport, Shropshire	GR		1
	TWC/2014/0977	Barn adjacent The Birch Moors, Adeney, Newport, Shropshire	FE	0.00	1
	TWC/2016/0560	Land between Beech Hill & Blue House Barns, Chetwynd Road, Newport, Shropshire	GR		19
	TWC/2015/0619	Land west of Cherrington Manor, Cherrington, Newport, Shropshire	GR	0.00	1
	TWC/2014/0718	The Old Brick Yard, Cherrington, Newport, Shropshire	FE	0.00	1
Ercall	TWC/2017/0001	Land rear of 3-7 Golf Links Lane, Wellington, Telford, Shropshire	EDU		4
	TWC/2014/0613	332 Holyhead Road, Wellington, Telford, Shropshire, TF1 2EY	FR	0.00	1
	TWC/2013/0938	Land off Holyhead Road, Wellington, Telford, Shropshire, TF6 5AB	GR	0.00	3
	TWC/2015/0392	Site of 34 Golf Links Lane, Wellington, Telford, Shropshire	GR	0.00	1
Ercall Magna	TWC/2015/0405	Heath House, 17 Middle Lane, Cold Hatton Heath, Telford, Shropshire, TF6 6QA	GR	0.00	1
	TWC/2014/0733	Land South of White House Farm, Cold Hatton, Telford, Shropshire	GR	0.00	1
	W2007/0986	22, Waters Upton	FR	0.10	1
	TWC/2016/1171	Site Of Meeson Hall, Meeson, Telford, Shropshire	OB		6
	TWC/2015/0878	High Ercall Methodist Church, Walton Avenue, High Ercall, Telford, Shropshire, TF6 6AJ	OB		1
	TWC/2015/0403	Site of Rock Cottages, 10 Cold Hatton, Telford, Shropshire	GR	0.00	1

FR - Former Residential FE - Former Employment OB - Other Brownfield GR - Greenfield

Ward Name	Application No	Address	Previous Use	Hectares	Not Started
Hadley and Leegomery					
	TWC/2015/0225	Land South of, 52 Horton Lane, Horton, Telford, Shropshire	GR	0.00	1
	TWC/2016/0604	Site of Hadley Centre Car Park, Haybridge Road, Hadley, Telford, Shropshire	OB		25
	TWC/2016/0772	Site of 15 - 32, Hall Gardens, Hadley, Telford, Shropshire	FR		12
	TWC/2016/0797	Site of Haybridge Hall Flats, Haybridge Road, Hadley, Telford, Shropshire	OB		10
	TWC/2014/1059	Land adjacent Fine Foods, 79 & Thiaras Fish Bar, 89 Haybridge Road, Hadley, Telford, Shro	GR	0.00	2
	TWC/2014/1151	Telford Millennium Community (Part of Phase 4), Ketley, Telford, Shropshire	GR		66
Haygate					
	W2016/1074	The Birches, 57 Wrockwardine Road, Wellington, Telford, Shropshire, TF1 3DA	FR		-1
	TWC/2014/1098	23 Walker Street, Wellington, Telford, Shropshire, TF1 1BD	OB	0.00	4
Horsehay and Lightmoor					
	TWC/2014/0559	Woodlands Farm, Woodlands Lane, Horsehay, Telford, Shropshire, TF4 3QF	FE	0.00	4
	TWC/2014/0998	Land adjacent Windermere House, Farm Lane, Horsehay, Telford, Shropshire	GR	0.00	3
	TWC/2015/1098	Site of former All Labour in Vain, Wellington Road, Horsehay, Telford, Shropshire	OB		9
Ironbridge Gorge					
	TWC/2016/0562	Site of Lincoln Grange Nursing Home, Lincoln Hill, Ironbridge, Telford, Shropshire	OB		89
	TWC/2015/1153	Land Adjacent Old Wynd House, Crackshall Lane, Coalbrookdale, Telford, Shropshire	GR		1
	TWC/2014/0191	15 Jockey Bank, Ironbridge, Telford, Shropshire, TF8 7PD	OB	0.00	3
	TWC/2014/0272	Ivydale, High Street, Coalport, Telford, Shropshire, TF8 7HZ	GR	0.00	10
	TWC/2015/0066	Former Dale End Garage Workshop, Dale End, Ironbridge, Telford, Shropshire	FE		1
	TWC/2013/0961	Garage/annex adjacent to, Laburnum Cottage, Woodlands Road, Ironbridge, Telford, Shrops	FR	0.00	1
	TWC/2016/0834	Land adjacent The White Horse Inn, Lincoln Hill, Ironbridge, Telford, Shropshire	GR		1
	TWC/2016/0481	17 The Wharfage, Ironbridge, Telford, Shropshire, TF8 7AW	OB		1
Ketley and Oakengates					
	TWC/2017/0005	Site of 5A Church Parade, Wombridge, Telford, Shropshire	OB		1
	TWC/2016/0739	Former 17-19 Stafford Road, Oakengates, Telford, Shropshire	FE		4

FR - Former Residential FE - Former Employment OB - Other Brownfield GR - Greenfield

Ward Name	Application No	Address	Previous Use	Hectares	Not Started
	TWC/2011/0769	The Homelands, Mossey Green, Ketley Bank, Telford, Shropshire, TF2 0DN	OB		10
	TWC/2016/0197	Site of The Stafford Arms, Main Road, Ketley Bank, Telford, Shropshire	OB		6
	TWC/2014/0327	Woodruff, Shrubbery Road, Red Lake, Telford, Shropshire, TF1 5EQ	FR	0.00	1
	TWC/2015/1122	Land between, 5 & 11 Leonard Street, Oakengates, Telford, Shropshire	GR	0.00	2
	TWC/2015/1097	Land between 88 & View House 103 Holyhead Road, Ketley, Telford, Shropshire	OB		10
	TWC/2013/0096	Ketley Millennium Village, Holyhead Road, Ketley, Telford, Shropshire	OB	11.09	151
	TWC/2013/0222	7 Oxford Street, Oakengates, Shropshire	FE	0.20	1
	TWC/2014/0261	Land north of Industry Nightclub, off Chapel Street, Oakengates, Telford, Shropshire	GR	0.00	3
	TWC/2014/1058	Land rear of 8 Ketley Vallens, Ketley, Telford, Shropshire	GR	0.00	3
	TWC/2014/0690	Land between 29 & 33 Station Road, Ketley, Telford, Shropshire	GR	0.00	2
	TWC/2016/0687	Land opposite Pear Tree Bridge Inn, Holyhead Road, Oakengates, Telford, Shropshire	GR		11
Lawley and Overdale					
	TWC/2014/0598	Upway Cottage, 51 The Rock, Telford, Shropshire, TF3 5BH	FR	0.00	1
	TWC/2015/0857	Easy Care Products Ltd, Chapel Workshops, Park Lane, Old Park, Telford, Shropshire, TF3	OB	0.00	0
	W2016/0236	Site of 1 - 30, Powis Place, Dawley Bank, Telford, Shropshire	FR		21
	TWC/2016/0280	Site Of Orchard House, Princes End, Dawley Bank, Telford, Shropshire	GR		1
	TWC/2016/1079	Site of, 45 Clares Lane Close, The Rock, Telford, Shropshire	GR		1
Madeley					
	TWC/2015/0722	Site of Lee Dingle, 48 Lees Farm Drive, Madeley, Telford, Shropshire	GR	0.00	1
	TWC/2015/0881	Site of 11 Queen Street, Madeley, Telford, Shropshire	FR	0.00	3
	TWC/2016/0237	Land to the rear and side of 71 High Street, Madeley, Telford, Shropshire	GR		1
	TWC/2016/0407	Former Severn Valley Motorsport Ltd/Madeley Testing Station, Ironbridge Road, Madeley, Tel	OB		8
	TWC/2016/0438	Site of 21 Bridle Road, Madeley, Telford, Shropshire	FR		7
	TWC/2016/0702	5 Court Street, Madeley, Telford, Shropshire, TF7 5EB	OB		1
Malinslee					
	TWC/2016/0749	Land opposite Phoenix Academy, Duce Drive, Dawley, Telford, Shropshire	OB		18

FR - Former Residential FE - Former Employment OB - Other Brownfield GR - Greenfield

Ward Name	Application No	Address	Previous Use	Hectares	Not Started
	TWC/2016/0252	Site Of Hazeldene, 22 Moor Road, Dawley, Telford, Shropshire	FR		2
	TWC/2016/0226	Land adjacent 83 Peveril Bank, Dawley Bank, Telford, Shropshire	FR		1
	TWC/2015/0997	Former Malinslee Primary School, Matlock Avenue, Dawley, Telford, Shropshire	EDU	0.00	68
Muxton					
	TWC/2016/0597	Site of Fernleigh, The Fields, Donnington, Telford, Shropshire	FR		1
	TWC/2015/1042	Land adjacent 50 Wellington Road, Muxton, Telford, Shropshire	GR		2
	TWC/2014/0934	Land adjacent Manderla, 7 Bradley Road, Donnington, Telford, Shropshire	GR	0.00	1
	TWC/2014/0728	4 Entry Bank, Muxton, Telford, Shropshire, TF2 8NY	OB	0.00	1
	TWC/2014/0846	Granville Farm, Grange Lane, Redhill, Telford, Shropshire, TF2 9PA	FE	0.00	8
Newport East					
	TWC/2016/0227	Land adjacent The Gables, 54 Stafford Road, Newport, Shropshire	GR		2
Newport North					
	TWC/2014/0204	Land To The Rear Of, Nix Service Station, Forton Road, Newport, Shropshire, TF10 7JR	GR	0.00	7
Newport South					
	TWC/2017/0095	1 & 2 The Maltings, Springfields, Newport, Shropshire, TF10 7EZ	FE		4
	TWC/2016/0535	Site of Units 3, 3A, 4, 5, 9, 10 & Yard 5, Springfield Industrial Estate, Station Road, Newport,	FE		33
	TWC/2015/0510	Land adjacent & rear of 11 & rear of Gable End, 9 Granville Avenue, Newport, Shropshire	GR	0.00	1
	TWC/2014/0333	Land corner of, Stafford Road/A41, Newport, Shropshire	FE	4.87	12
Newport West					
	TWC/2012/0916	Land adjacent 17, Water Lane, Newport, Shropshire	FE		12
	TWC/2014/1076	Land rear of 28 Beaumaris Road, Newport, Shropshire	GR	0.00	2
Priorslee					
	TWC/2016/0162	Land North of, Keepers Crescent & Daisy Bank Drive, St Georges, Telford, Shropshire	GR		32
	TWC/2012/0243	The Hollies, Priorslee Village, Telford, Shropshire, TF2 9NW	GR		1
	TWC/2016/0125	Land at junction of, Moss Road/Rookery Road, Wrockwardine Wood, Telford, Shropshire	FR		24

FR - Former Residential FE - Former Employment OB - Other Brownfield GR - Greenfield

Ward Name	Application No	Address	Previous Use	Hectares	Not Started
St. Georges	TWC/2015/0146	Wesley House, 4 Station Hill, St Georges, Telford, TF2 9AA	OB	0.00	10
	TWC/2016/1122	77 & 79 West Street, St Georges, Telford, Shropshire	OB		-1
The Nedge					
	W2009/0326	Randlay Centre, Randlay Community Centre, Randlay, Telford, Shropshire.	OB	1.41	12
Wrockwardine					
	TWC/2014/0615	Land Adj. Raven Cottage, Isombridge Lane, Longdon-upon-Tern, Telford, TF6 6LH	GR	0.00	1
	TWC/2014/0662	Brook Lodge, Arleston Lane, Arleston, Telford, Shropshire, TF1 2JY	FR	0.00	1
	TWC/2015/0915	Site of The Mill House, Walcot, Telford, Shropshire	OB		1
	TWC/2014/0429	A B C Day Nursery, The Village School, Wrockwardine, Telford, Shropshire, TF6 5DG	EDU	0.00	2
	TWC/2014/0805	The Patch, Land opposite 4 High Point, Little Wenlock, Telford, Shropshire, TF6 5BT	GR	0.00	1
	TWC/2014/0575	Land adjacent 21, Allscott, Telford, Shropshire	GR	0.00	1
	TWC/2015/1037	Longdon Livery Centre, Tern Lane, Longdon On Tern, Telford, Shropshire, TF6 6LN	OB	0.00	1
	TWC/2014/1078	Orchard Field (opposite The Mount Guest House), Dawley Road, Arleston, Telford, Shropshir	GR	0.00	1
	TWC/2016/0685	Land between, 20, 22 Bratton Road, Bratton, Telford, Shropshire	GR		5
	TWC/2016/0025	Home Farm Cottage, Malt House Bank, Little Wenlock, Telford, Shropshire, TF6 5BN	GR	0.00	1
	TWC/2016/0551	Highbury Villa, Drury Lane, Rodington, Telford, Shropshire, SY4 4RG	OB		-1
	TWC/2016/1164	Land Adjacent, 8 The Avenue, Sugden, Telford, Shropshire	FR		1
Wrockwardine Wood and Trench					
	TWC/2016/0747	Site of 17-24 James Close, Trench, Telford, Shropshire	FR		7
	TWC/2015/0949	Land east of The Blue Pig, Capewell Road, Trench, Telford, Shropshire	OB		21
	TWC/2010/0593	The Former Methodist Chapel, Chapel Terrace, Wrock	OB	0.00	4
Borough				17.669	1027

FR - Former Residential FE - Former Employment OB - Other Brownfield GR - Greenfield

Ward Name	Application No	Address	Previous Use	Hectares	Not Started
FULL REFUSED		Appeal Allowe			
Ercall Magna					
	W2008/0059	TERN FARM, LONGDON-ON-TERN	GR	1.01	7
Borough				1.0124	7
OTHER					
Cuckoo Oak					
	W2016/0916	26 - 42 (even), 19 - 35 (odds) Brook Road, 10 - 26 (even), 13 - 29 (odds) Oak Close, 17 - 31 (FR		-52
	W2016/0691	Wendover, Hills Lane, Madeley, Telford, Shropshire, TF7 4BY	FR		-1
Donnington					
	W2016/0917	Site of 1-71 (odds), St Matthews Road, Donnington, Telford, Shropshire	FR		-36
Ercall Magna					
	W2016/0763	New Farm, Roden Lane, Roden, Telford, Shropshire, TF6 6BS	OB		1
Lawley and Overdale					
	W2016/0980	Reynolds House, Ironmasters Way, Telford Town Centre, Telford, Shropshire, TF3 4NT	OB		68
Newport West					
	W2016/0370	Lower Farm, Longford Road, Newport, Shropshire, TF10 8LP	OB		1
Wrockwardine Wood and Trench					
	W2016/0746	17-24 James Close, Trench, Telford, Shropshire, TF2 7HH	OB	0.00	-8
Borough				0	-27

FR - Former Residential FE - Former Employment OB - Other Brownfield GR - Greenfield

Ward Name	Application No	Address	Previous Use	Hectares	Not Started
OUTLINE GRANTED					
Apley Castle					
	TWC/2014/0746	Maxell Europe Ltd, Hortonwood, Telford, Shropshire, TF1 6DA	FE	0.00	495
Church Aston and Lilleshall					
	TWC/2015/0030	Land between Preston Cottage 15 & Village Farm, Preston, Upon The Weald Moors, Telford,	FE	0.00	1
	TWC/2014/0655	Land adjacent 9A Humber Lane, Telford, Shropshire, TF2 8LP	GR	0.00	1
	TWC/2016/0124	Land at Tessant House, Dark Lane, Church Aston, Newport, Shropshire	GR		1
	TWC/2015/0089	Site of 5 Humber Lane, Preston Upon The Weald Moors, Telford, Shropshire	FR	0.00	1
College					
	TWC/2015/1151	Land opposite College Farm House, Mill Lane, Wellington, Telford, Shropshire	GR	0.00	5
	TWC/2012/0200	125 King Street, Wellington, Telford, Shropshire, TF1 1NX	FE	0.00	13
	TWC/2014/1053	Site of Masonic Building, Constitution Hill, Wellington, Telford, Shropshire	OB	0.00	4
Cuckoo Oak					
	TWC/2015/0506	Land adjacent, 39 Shawfield Close, Sutton Hill, Telford, Shropshire	GR	0.00	1
Dawley Magna					
	TWC/2016/0954	Land East of Southall Play Area, Southall Road, Aqueduct, Telford, Shropshire	FE		3
	TWC/2015/0121	Site of 33 Portley Road, Dawley, Telford, Shropshire	FR	0.00	1
	W2009/0914	Land at, Southwater, St Quentin Gate, Telford Town Centre, Telford, Shropshire.	OB		330
	TWC/2014/0671	Land adjacent to Cheshire Cheese, Doseley Road, Doseley, Telford, Shropshire	GR	0.00	13
Donnington					
	TWC/2017/0029	Land opposite 93 & 95 Ash Lea Drive, Donnington, Telford, Shropshire	OB		4
	TWC/2014/0139	Land part of The Old Lodge, School Road, Donnington, Telford, Shropshire	FR	0.00	2
Edgmond					
	TWC/2015/0580	Land adjacent 44 Cherrington Road, Tibberton, Newport, Shropshire	GR	0.00	2
	TWC/2014/0230	Land at Back Lane/Plantation Road, Tibberton, Newport, Shropshire, TF10 8NX	GR		26
	TWC/2014/0705	Plot 2, Plantation Road, Tibberton, Newport, Shropshire, TF10 8PD	FR	0.00	1
FR - Former Residential FE - Former Employment OB - Other Brownfield GR - Greenfield					

Ward Name	Application No	Address	Previous Use	Hectares	Not Started
	TWC/2016/0441	Land adjacent 56 Shrewsbury Road, Edgmond, Shropshire	GR		2
	TWC/2014/1102	Site of 27 Cherrington, Newport, Shropshire	FR	0.00	-1
	TWC/2015/0950	Site of Honey House, Tibberton, Newport, Shropshire	GR		2
	TWC/2016/0659	Site of 62 Plantation Road, Tibberton, Newport, Shropshire	OB		1
	TWC/2016/0709	Site of 72 Back Lane, Tibberton, Newport, Shropshire	GR		1
Ercall					
	TWC/2016/0285	Site of 17 Ercall Gardens, Wellington, Telford, Shropshire	GR		1
	TWC/2016/0828	Site of, 211 Holyhead Road, Wellington, Telford, Shropshire,	FR		1
Ercall Magna					
	TWC/2015/1111	Land adjacent 8 Walton Avenue & adjacent Ridgway, High Ercall, Telford, Shropshire	FE		45
	TWC/2014/1099	Land adjacent/rear of Chris Cottage & Nichol House, Rowton, Telford, Shropshire	FE	0.00	2
	TWC/2015/0065	Site of Pear Tree House, Waters Upton, Telford, Shropshire	GR	0.00	3
	TWC/2015/0157	Former Dairy Crest Ltd, Crudgington, Telford, Shropshire	FE	0.00	111
	TWC/2015/0220	Site of Roden Nurseries, Roden Lane, Roden, Telford, Shropshire	FE	0.00	9
Hadley and Leegomery					
	TWC/2016/0044	Site of 45 Horton Lane, Horton, Telford, Shropshire	GR	0.00	1
	TWC/2015/1017	Land rear of 60 Castle Street, Hadley, Telford, Shropshire	GR	0.00	1
	TWC/2016/1163	Land adjacent 15 Manse Road, Hadley, Telford, Shropshire	GR		2
	TWC/2016/0466	Site of 5 The Grove, Hadley, Telford, Shropshire	GR		2
	TWC/2016/0221	Site of 25 Hadley Park Road, Hadley, Telford, Shropshire	FR		1
Horsehay and Lightmoor					
	TWC/2013/0902	Hughes Transport Ltd, The Garage, Wellington Road, Horsehay, Telford, Shropshire, TF4 3Q	FE	0.00	23
	TWC/2016/0533	Site of Sundown, Old Office Road, Dawley, Telford, Shropshire	OB		7
	TWC/2015/0488	Site of Oakleigh, Lawley Village, Telford, Shropshire	FR		8
	TWC/2012/0650	Doseley Works, Doseley, Telford, Shropshire, TF4 3BX	OB		268
	W2002/0392	Land at Lightmoor, Telford	OB	79.20	320

FR - Former Residential FE - Former Employment OB - Other Brownfield GR - Greenfield

Ward Name	Application No	Address	Previous Use	Hectares	Not Started
	TWC/2016/1155	Site of 12 St Lukes Road, Doseley, Telford, Shropshire	GR		3
	TWC/2014/0770	Land at Hartfield House, Pool Hill Road, Dawley, Telford, Shropshire	GR	0.00	1
Ironbridge Gorge					
	TWC/2011/1102	Land off, Beech Road, Madeley, Telford, Shropshire	OB	0.00	92
Ketley and Oakengates					
	TWC/2016/0836	Site of 41 Riddings Close, Ketley, Telford, Shropshire	FR		1
	TWC/2012/0056	Land at Dream Car Sale, Leonard Street and Land adjacent to 39 Stafford Road, Oakengates	OB	0.00	14
	TWC/2014/0645	Land adjacent Redvers House, Holyhead Road, Oakengates, Telford, Shropshire,	FR	0.00	1
	TWC/2015/0369	Land off Garfield Road, Red Lake, Ketley Bank, Telford, Shropshire	GR	0.00	45
	TWC/2015/0629	Land Adjacent, 11 Withington Close, Oakengates, Telford, Shropshire	GR	0.00	1
	TWC/2015/1154	Site of The White Lion Inn, Holyhead Road, Ketley, Telford, Shropshire	GR	0.00	2
	TWC/2016/0769	Site of Clifton Cottage, Hillside Road, Ketley Bank, Telford, Shropshire	GR		1
	TWC/2013/0738	Land adjacent 36 Quarry Lane, Red Lake, Telford, Shropshire	GR	0.00	1
Lawley and Overdale					
	TWC/2016/0147	Land North of Grove Road, Overdale, Telford, Shropshire	GR		80
	TWC/2016/0168	Land adjacent Buena Vista, 6 The Crest, Old Park, Telford, Shropshire	OB		5
	TWC/2016/0677	Site of Wrekin Pneumatics (Telford) Ltd/Wrekin Garden Machinery/Kleaning Equipment West	FE		5
	W2004/0980	LAND AT, LAWLEY, The Rock	GR	157.50	1340
Madeley					
	TWC/2015/0928	Land East of 21A St Michaels Close, Madeley, Telford, Shropshire,	GR		1
Malinslee					
	TWC/2013/0592	Former Ever Ready Factory, Hinkshay Road, Dawley, Telford, Shropshire	FE	0.00	165
	TWC/2015/0264	Site of 2 Hinkshay Road, Hinkshay, Telford, Shropshire	GR	0.00	1
Muxton					
	TWC/2015/0763	Land South West of Lodge Cottage, 1 Lodge Road, Donnington Wood, Telford, Shropshire	GR	0.00	1
	TWC/2014/0008	Land rear of, 41, 43, 45, 47 Wellington Road, Muxton, Telford, Shropshire	GR	0.00	19

FR - Former Residential FE - Former Employment OB - Other Brownfield GR - Greenfield

Ward Name	Application No	Address	Previous Use	Hectares	Not Started
Newport North					
	TWC/2014/0085	Land adjacent The Glen, 10 Green Lane, Newport, Shropshire	GR	0.00	1
	TWC/2016/1136	Site of 3 Forton Road, Newport, Shropshire	GR		1
Newport West					
	TWC/2013/0777	Aston Grove, Moorfield Lane, Church Aston, Newport, Shropshire, TF10 9EH	FR	0.00	9
	TWC/2011/0821	Land At, Wellington Road, Newport, Shropshire,	GR	0.00	145
Park					
	TWC/2016/1084	Site of The Acorns, Donnerville Gardens, Admaston, Telford, Shropshire	FR		6
Priorslee					
	TWC/2012/0530	Off, Priorslee East, Gatcombe Way/York Road/Hereford Drive, Priorslee, Telford, Shropshire,	GR	0.00	395
	TWC/2014/0980	Land between, Castle Farm Way and A5, Priorslee, Telford, Shropshire	FE		1100
St. Georges					
	TWC/2016/0654	Land rear of, 66 and 68 Stafford Road, Oakengates, Telford, Shropshire,	GR		1
	TWC/2014/1012	Land opposite Usc Con, 15 Rocfield Terrace, Lincoln Road, Wrockwardine Wood, Telford, Sh	GR	0.00	1
	TWC/2013/0901	Units 7-9, Gower Street Industrial Estate, Gower Street, St Georges, Telford, Shropshire, TF	FE	0.00	20
	TWC/2015/1008	Former Garage, New Street, St Georges, Telford, Shropshire	OB		6
	TWC/2017/0065	Site of Ambleside, Stafford Street, St Georges, Telford, Shropshire	GR		1
	TWC/2015/1006	Land to rear of Grove House, Grove Street, St Georges, Telford, Shropshire	GR	0.00	1
Woodside					
	TWC/2014/1114	Land adjoining Denholme, Park Lane, Woodside, Telford, Shropshire,	GR	0.00	1
Wrockwardine					
	TWC/2013/0886	Land adjacent, 19 Aldermead Close, Admaston, Telford, Shropshire	GR	0.00	9
	TWC/2014/0113	Former British Sugar site, Allscott, Telford, Shropshire	FE		470
	TWC/2014/1050	Land Adjacent Falcon House, New Works, Telford, Shropshire	GR	0.00	1
Wrockwardine Wood and Trench					
	TWC/2015/0572	Site of Simply The Best Valeting, Plough Road, Wrockwardine Wood, Telford, Shropshire	OB		5

FR - Former Residential

FE - Former Employment

OB - Other Brownfield

GR - Greenfield

Ward Name	Application No	Address	Previous Use	Hectares	Not Started
	TWC/2016/0799	Site of 11 & 11A Field Road, Trench, Telford, Shropshire	FR		1
	TWC/2016/0052	Land adjacent The Bridge Inn, Wombridge Road, Trench, Telford, Shropshire	GR	0.00	2
	TWC/2013/0861	Sutherland Business & Enterprise College, Gibbons Road, Trench, Telford, Shropshire, TF2	EDU		123
Borough				236.7	5792
RESERVE MATTERS GRANTED					
Haygate					
	W2008/0108	Orleton Park, Orleton Lane, Wellington, Telford, Shropshire.	OB	6.84	165
Borough				6.843	165

FR - Former Residential FE - Former Employment OB - Other Brownfield GR - Greenfield

Ward Name	Application No	Address	Previous Use	Hectares	Not Started
RESERVED MATTERS GRANTED					
Apley Castle					
	TWC/2015/0843	Land off Peregrine Way, Leegomery, Telford, Shropshire	GR		100
Arleston					
	TWC/2017/0092	Site of The Bungalow, Arleston Village, Arleston, Telford, Shropshire	FR		3
	TWC/2015/0836	Land between Arleston Lane & Dawley Road, Arleston, Telford, Shropshire	GR		145
Church Aston and Lilleshall					
	TWC/2016/0682	Site of Village Farm, Preston Upon The Weald Moors, Telford, Shropshire	GR		1
	TWC/2015/0581	Land adjacent 9 Hillside, Lilleshall, Newport, Shropshire	GR	0.00	1
	TWC/2016/0240	Land adjacent 9 Hillside, Lilleshall, Newport, Shropshire	GR		1
	TWC/2016/0260	Land adjacent The Knoll, Church Aston, Newport, Shropshire	GR		17
Dawley Magna					
	TWC/2014/0602	Plot E, Pool Hill/Doseley Road, Dawley, Telford, Shropshire	GR	0.00	50
Edgmond					
	TWC/2016/0541	Land between Rose Green & Swn Y Coed, Tibberton, Newport, Shropshire	GR		1
	TWC/2015/0582	Land adjacent 18 Cherrington, Cherrington, Shropshire	GR	0.00	1
	TWC/2015/0988	Site of 2 Sambrook, Newport, Shropshire	GR	0.00	1
Ercall					
	TWC/2016/1197	Land to the rear of 3-7 Golf Links Lane, Wellington, Telford, Shropshire	EDU		80
Ercall Magna					
	TWC/2015/0910	Land adjoining Waters Upton Village Hall, Waters Upton, Telford, Shropshire	GR		4
	TWC/2015/0994	Land to the south of St Michaels Church, Waters Upton, Telford, Shropshire	FE		8
	TWC/2015/0455	Land adjacent to 28 Mill Lane, Kynnersley, Telford, Shropshire	GR	0.00	3
	TWC/2015/0734	Land adjacent Roden Hall, site of Llanhaven & The Bungalow, Roden Lane, Roden, Telford,	GR	0.00	3
Hadley and Leegomery					
	TWC/2013/1003	Land at Hadley Park West, (off Okehampton Road), Leegomery, Telford, Shropshire,	GR	7.12	1
FR - Former Residential FE - Former Employment OB - Other Brownfield GR - Greenfield					

Ward Name	Application No	Address	Previous Use	Hectares	Not Started
	TWC/2014/0796	Land North of, Okehampton Road, Leegomery, Telford, Shropshire	GR	0.00	5
	TWC/2015/0058	Land North of, Okehampton Road, Leegomery, Telford, Shropshire,	GR	0.00	3
	TWC/2014/0221	Former Blockleys Brick Ltd, Land off Sommerfeld Road, Trench Lock, Telford, Shropshire, T	GR	0.00	3
Horsehay and Lightmoor					
	TWC/2016/0660	Lawley Phase 7, Lawley, Telford, Shropshire	OB		245
	TWC/2014/1072	Land north of Lightmoor Way, Lightmoor Village, Telford, Shropshire	GR	0.00	172
	TWC/2016/0180	Land adjacent Acorn Cottage, 36 Lawley Gate, Lawley, Telford, Shropshire	GR		1
	TWC/2012/0419	Lawley Phase 6, Dawley Road, Lawley , Telford, Shropshire.	GR	11.05	7
	TWC/2014/0237	Land at Doseley Works, Doseley, Telford, Shropshire, TF4 3BX	GR	0.00	104
Lawley and Overdale					
	TWC/2015/0233	Lawley Phase 8, Lawley, Telford, Shropshire	GR	0.00	360
Newport East					
	TWC/2013/0354	48 Stafford Road, Newport, Shropshire, TF10 7NA	OB	0.00	2
Newport South					
	TWC/2016/0529	Land adjacent 1 Station Road, Newport, Shropshire	GR		1
Newport West					
	TWC/2016/0059	Phase 4, Land North, East & South of Aston Grove, off Wellington Road, Newport, Shropshir	FE		62
	TWC/2013/0928	Phase 1, Land off Wellington Road, Newport, Shropshire	GR	3.47	2
Priorslee					
	TWC/2016/0804	Land Rear of Units 1A-1C, Gatcombe Way, Priorslee, Telford, Shropshire	GR		20
Wrockwardine					
	TWC/2016/0738	Site of Holly Tree House, Allscott, Telford, Shropshire	GR		1
	TWC/2016/0332	Land West of The Cedars, Rodington, Telford, Shropshire	OB		14
	TWC/2012/0895	Land Adjacent 17, Charlton, Telford, Shropshire, TF6 5EH	OB	0.00	2
Wrockwardine Wood and Trench					
	TWC/2016/1099	Site of former Wrockwardine Wood Arts College, New Road, Wrockwardine Wood, Telford, S	EDU		53

FR - Former Residential FE - Former Employment OB - Other Brownfield GR - Greenfield

Ward Name	Application No	Address	Previous Use	Hectares	Not Started
Borough				21.638	1477
TOTALS				283.9	8440

FR - Former Residential FE - Former Employment OB - Other Brownfield GR - Greenfield

Appendix 4a - Completed Employment Floorspace 2016/17

Application No	Address	Use Class	Previous Use	Sq M	Hectares
W2014/0969	Plot 4, Telford 54, Naird Lane, Nedge Hill, Telford, Shropshire	B1(a)	GR	220	0.31
W2015/1103	Harper Adams University College, Edgmond, Newport, Shropshire, TF10 8NB	B1(a)	GR	100	0.00
W2016/0478	Pickstock Ashby Ltd, Unit E, Hortonwood 45, Hortonwood, Telford, Shropshire, TF1 7FA	B1(a)	GR	24	
W2012/0778	Land off, Beaconsfield/Burford Brookside TF3 1NT	B1(a)	PDL	-69	2.20
W2012/0778	Land off, Beaconsfield/Burford Brookside TF3 1NT	B1(a)	PDL	80	2.20
W2013/0483	Merrythought Ltd, Merrythought Village Dale End Coalbrookdale TF8 7NJ	B1(a)	PDL	558	0.00
W2013/0484	Merrythought Ltd, Merrythought Village Dale End Coalbrookdale TF8 7NJ	B1(a)	PDL	-160	0.00
W2014/0571	42 High Street, Hadley, Telford, Shropshire, TF1 5NG	B1(a)	PDL	-113	0.00
W2014/0726	Telford & Wrekin Council For Voluntary Service, The Liz Yates Centre, Lightmoor Road, Lightmoor, Telford, Shropshire	B1(a)	PDL	-144	0.30
W2015/0084	Fuller/Jordan House, Hall Park Way, Telford Town Centre, Telford, Shropshire, TF3 4NF	B1(a)	PDL	-1708	0.00
W2016/0138	Yard A-D, Halesfield 16, Halesfield, Telford, Shropshire	B1(a)	PDL	80	
W2016/0208	Punjabi Telford Cultural Society, 19A Church Parade, Wombridge, Telford, Shropshire	B1(a)	PDL	50	
W2016/0279	8-10 Duke Street, Wellington, Telford, Shropshire, TF1 1BJ	B1(a)	PDL	-143	
W2016/0289	93 Hills Lane Drive, Madeley, Telford, Shropshire, TF7 4BY	B1(a)	PDL	0	
W2016/0305	30A High Street, Newport, Shropshire, TF10 7AQ	B1(a)	PDL	-106	
W2016/0312	Land adjacent Majestic Distribution (Bitec), Halesfield 2, Halesfield, Telford, Shropshire	B1(a)	PDL	87	
W2016/0366	Dale Brothers UK Ltd, Hortonwood 67, Hortonwood, Telford, Shropshire, TF1 7GU	B1(a)	PDL	30	
W2016/0449	The Lighting Association, Stafford Park 7, Stafford Park, Telford, Shropshire, TF3 3BQ	B1(a)	PDL	340	
W2016/0449	The Lighting Association, Stafford Park 7, Stafford Park, Telford, Shropshire, TF3 3BQ	B1(a)	PDL	-337	
W2016/0502	2A New Street, Newport, Shropshire, TF10 7AX	B1(a)	PDL	-52	
W2016/0893	15 Queen Street, Wellington, Telford, Shropshire, TF1 1EH	B1(a)	PDL	0	
W2016/1028	Overley Hall School, Overley, Telford, Shropshire, TF6 5HE	B1(a)	PDL	-38	
W2016/1028	Overley Hall School, Overley, Telford, Shropshire, TF6 5HE	B1(a)	PDL	55	
W2016/1035	GP Walk in Centre Princess Royal Hospital, Grainger Drive, Apley, Telford, Shropshire, TF1 6TF	B1(a)	PDL	44	
W2017/0135	Suite C2, The Place, New Street, Oakengates, Telford, Shropshire, TF2 6EP	B1(a)	PDL	-34	

Application No	Address	Use Class	Previous Use	Sq M	Hectares
Use Class Net				-1236	
Use Class Gross				1668	
W2015/1103	Harper Adams University College, Edgmond, Newport, Shropshire, TF10 8NB	B1(b)	GR	500	0.00
W2013/0265	The Mount, 1 Haygate Road, Wellington, Telford, Shropshire, TF1 1QX	B1(b)	PDL	-1335	0.00
W2014/0338	Telford & Wrekin NHS Primary Care Trust, 66 - 67 High Street, Madeley, Telford, Shropshire, TF7 5AU	B1(b)	PDL	-384	0.00
Use Class Net				-1219	
Use Class Gross				500	
W2014/0312	Charlton Farm, Charlton, Telford, Shropshire, TF6 5ES	B1(c)	GR	1911	0.00
W2014/0687	Land North of Dunelm, Rodington Heath, Telford, Shropshire	B1(c)	GR	-3000	0.30
W2014/0741	Barratts Field, Duncote Mill, Walcot, Telford, Shropshire, TF6 5ER	B1(c)	GR	465	0.47
W2014/0742	Barratts Field, Duncote Mill, Walcot, Telford, Shropshire, TF6 5ER	B1(c)	GR	465	0.47
W2014/0969	Plot 4, Telford 54, Naird Lane, Nedge Hill, Telford, Shropshire	B1(c)	GR	929	0.31
W2014/1116	Land North of Hilbrae Pets Hotel, Ellerdine Heath, Telford, Shropshire	B1(c)	GR	5175	0.00
W2015/0118	Site of The Hill Farm, Isombridge Lane, Longdon On Tern, Telford, Shropshire	B1(c)	GR	60	0.00
W2016/1189	Deepdale Farm, Chester Road, Chetwynd, Newport, Shropshire, TF10 8BH	B1(c)	GR	-215	
W2014/1091	Dairy Crest Ltd, Haybrook, Halesfield 9, Halesfield, Telford, Shropshire, TF7 4QW	B1(c)	PDL	1170	0.40
W2015/0469	Builders Yard and land adjacent Fair View, Stars Lane, Cold Hatton, Telford, Shropshire	B1(c)	PDL	-1332	0.00
W2016/0258	Unit 42, Ketley Business Park, Ketley, Telford, Shropshire, TF1 5JD	B1(c)	PDL	-3000	
W2016/0895	The Recycling Group, Halesfield 15, Halesfield, Telford, Shropshire, TF7 4LE	B1(c)	PDL	957	
W2016/0931	6A Bagley Drive, Wellington, Telford, Shropshire, TF1 3NP	B1(c)	PDL	31	
W2016/1137	Site of Units 3, 3A, 4, 5, 9, 10 & Yard 5, Springfield Industrial Estate, Station Road, Newport, Shropshire	B1(c)	PDL	-405	
Use Class Net				3210	
Use Class Gross				11162	
W2014/0181	Land at Hortonwood 50/60, Hortonwood Industrial Estate, Telford, Shropshire	B2	GR	4005	2.98
W2016/0094	Plot 2, Halesfield 24, Halesfield, Telford, Shropshire	B2	GR	920	0.67
W2014/0152	Land at Waterloo Road, Ketley, Telford, Shropshire, TF1 5BA	B2	PDL	1742	0.72
W2014/0678	Land at Halesfield 25, Halesfield, Telford, Shropshire	B2	PDL	756	0.58

Application No	Address	Use Class	Previous Use	Sq M	Hectares
W2015/0964	Unit 14, Tweeddale North, Madeley, Telford, Shropshire, TF7 4JR	B2	PDL	259	
W2015/1035	Kiyokuni Europe Ltd, Holyhead Road, Snedshill, Telford, Shropshire, TF2 9TY	B2	PDL	1755	0.00
W2015/1149	Former Petrol Station, Finger Road, Dawley, Telford, Shropshire, TF4 3LB	B2	PDL	430	
W2016/0033	Telford Town Park, Hinkshay Road, Dawley, Telford, Shropshire	B2	PDL	-3500	0.00
W2016/0312	Land adjacent Majestic Distribution (Bitec), Halesfield 2, Halesfield, Telford, Shropshire	B2	PDL	-5220	
W2016/0451	Units 4 & 5 Audley Avenue Business Park, Audley Avenue, Newport, Shropshire, TF10 7BX	B2	PDL	-520	
W2016/0470	Heinz Food Service, Hortonwood 2, Hortonwood, Telford, Shropshire, TF1 7XW	B2	PDL	125	
W2016/0486	Units 18-19, Ketley Business Park, Ketley, Telford, Shropshire, TF1 5JD	B2	PDL	-183	
W2016/0756	Units 1-3, Audley Avenue Business Park, Audley Avenue, Shropshire, Newport, TF10 7BX	B2	PDL	-390	
W2016/0910	Coopers Sausage Rolls, Poynton Road, Roden, Telford, Shropshire, TF6 6EN	B2	PDL	278	
W2016/0935	Greenhous Group Ltd, Greenhous Village, Osbaston, Telford, Shropshire, TF6 6RB	B2	PDL	150	
Use Class Net				607	
Use Class Gross				10420	
W2014/1036	Land Adjacent, 8 The Avenue, Sugden, Telford, Shropshire	B8	GR	27	
W2015/1134	Melverley Farm, Rowton, Telford, Shropshire, TF6 6QX	B8	GR	1925	
W2013/0483	Merrythought Ltd, Merrythought Village Dale End Coalbrookdale TF8 7NJ	B8	PDL	-558	0.00
W2013/0871	Unit 108C, Halesfield 13, Halesfield, Telford, Shropshire, TF7 4QR	B8	PDL	-777	1.45
W2014/1091	Dairy Crest Ltd, Haybrook, Halesfield 9, Halesfield, Telford, Shropshire, TF7 4QW	B8	PDL	-1170	0.40
W2015/0359	Angel Centre, Osbaston, Telford, Shropshire, TF6 6RB	B8	PDL	133500	
W2016/0033	Telford Town Park, Hinkshay Road, Dawley, Telford, Shropshire	B8	PDL	3500	0.00
W2016/0138	Yard A-D, Halesfield 16, Halesfield, Telford, Shropshire	B8	PDL	1842	
W2016/0996	Unit 7, Trench Lock 2, Trench Lock, Telford, Shropshire, TF1 5SW	B8	PDL	-55	
Use Class Net				138234	
Use Class Gross				140794	
Borough Net Totals				139597	
Borough Gross Totals				164545	

Appendix 4b - Other Non-residential Completed Floorspace 2016/17

Application No	Address	Use Class	Previous Use	Sq M	Hectares
W2012/0778	Land off, Beaconsfield/Burford Brookside TF3 1NT	A1	PDL	-500	2.20
W2012/0778	Land off, Beaconsfield/Burford Brookside TF3 1NT	A1	PDL	534	2.20
W2014/1097	Pipeline Merchants Ltd, 23 High Street, Wellington, Telford, Shropshire, TF1 1JW	A1	PDL	-193	0.00
W2014/1138	5 Church Street, Wellington, Telford, Shropshire, TF1 1DD	A1	PDL	22	0.07
W2015/0039	Site of The Wrekin View PH, Milners Lane, Dawley Bank, Telford, Shropshire	A1	PDL	279	0.09
W2015/0746	Meeting Point House, Southwater Way, Telford Town Centre, Telford, Shropshire, TF3 4HS	A1	PDL	-18	0.00
W2015/0978	Site of 72B Furnace Lane, Trench, Telford, Shropshire	A1	PDL	-32	
W2016/0262	2 Hordley Road, Wellington, Telford, Shropshire, TF1 3NR	A1	PDL	-52	
W2016/0279	8-10 Duke Street, Wellington, Telford, Shropshire, TF1 1BJ	A1	PDL	-98	
W2016/0343	15 Church Street, St Georges, Telford, Shropshire, TF2 9JU	A1	PDL	48	
W2016/0387	Former Madeley Court School, Land off Parkway, Madeley, Telford, Shropshire	A1	PDL	2268	
W2016/0406	180 Wombridge Road, Trench, Telford, Shropshire, TF2 6PU	A1	PDL	37	
W2016/0422	Aldi Foodstore Ltd, Audley Avenue, Newport, Shropshire, TF10 7BX	A1	PDL	19	
W2016/0534	Argyll House, Bank Road, Dawley Bank, Telford, Shropshire, TF4 2BB	A1	PDL	144	
W2016/0694	Aldi Foodstore Ltd, Grooms Alley, Wellington, Telford, Shropshire, TF1 1BN	A1	PDL	-1144	
W2016/0756	Units 1-3, Audley Avenue Business Park, Audley Avenue, Shropshire, Newport, TF10 7BX	A1	PDL	390	
W2016/0899	Unit D, Madeley Shopping Malls, High Street, Madeley, Telford, Shropshire, TF7 5BQ	A1	PDL	-57	
W2016/0931	6A Bagley Drive, Wellington, Telford, Shropshire, TF1 3NP	A1	PDL	80	
Use Class Net				1727	
Use Class Gross				3820	
W2015/1047	Suite 3 Bishton Court, Boyd Close, Telford Town Centre, Telford, Shropshire, TF3 4JE	A2	PDL	-225	0.00
W2016/0880	Sidney's Pet Presents and Grooming, The Old Stables, High Street, Ironbridge, Telford, Shropshire, TF8 7AD	A2	PDL	-52	
W2017/0068	64 High Street, Dawley, Telford, Shropshire, TF4 2EX	A2	PDL	-41	
W2017/0124	The Co-operative Bank, 17 Market Square, Wellington, Telford, Shropshire, TF1 1BU	A2	PDL	-112	
Use Class Net				-430	
Use Class Gross				0	

Application No	Address	Use Class	Previous Use	Sq M	Hectares
W2016/0163	19 Church Street, Wellington, Telford, Shropshire, TF1 1DD	A3		69	
W2014/0694	Telford Shopping Centre, Telford Town Centre, Telford, Shropshire	A3	PDL	360	2437.00
W2014/0694	Telford Shopping Centre, Telford Town Centre, Telford, Shropshire	A3	PDL	347	2437.00
W2014/0694	Telford Shopping Centre, Telford Town Centre, Telford, Shropshire	A3	PDL	348	2437.00
W2014/0694	Telford Shopping Centre, Telford Town Centre, Telford, Shropshire	A3	PDL	357	2437.00
W2014/0694	Telford Shopping Centre, Telford Town Centre, Telford, Shropshire	A3	PDL	463	2437.00
W2014/0694	Telford Shopping Centre, Telford Town Centre, Telford, Shropshire	A3	PDL	366	2437.00
W2015/0353	Taj Mahal 29 Bridge Road, Wellington, Telford, Shropshire, TF1 1ED	A3	PDL	42	0.00
W2015/0412	Transport Yard, Heath Hill Industrial Estate, Dawley, Telford, Shropshire, TF4 2RJ	A3	PDL	100	0.00
W2015/0746	Meeting Point House, Southwater Way, Telford Town Centre, Telford, Shropshire, TF3 4HS	A3	PDL	157	0.00
W2016/0888	McDonalds Restaurants Ltd, School Road, Donnington, Telford, Shropshire, TF2 8HH	A3	PDL	50	
W2016/0931	6A Bagley Drive, Wellington, Telford, Shropshire, TF1 3NP	A3	PDL	-113	
W2016/1156	McDonalds Restaurant, School Road, Donnington, Telford, Shropshire, TF2 8HH	A3	PDL	63	
W2017/0124	The Co-operative Bank, 17 Market Square, Wellington, Telford, Shropshire, TF1 1BU	A3	PDL	112	
Use Class Net				2720	
Use Class Gross				2833	
W2014/0736	The Red Lion Inn, New Road, Wrockwardine Wood, Telford, Shropshire, TF2 7AA	A4	PDL	-238	0.00
W2015/0350	Seven Stars Inn, Cold Hatton, Telford, Shropshire, TF6 6QH	A4	PDL	-256	0.00
W2015/0746	Meeting Point House, Southwater Way, Telford Town Centre, Telford, Shropshire, TF3 4HS	A4	PDL	260	0.00
W2015/0792	The Kings Head, 141 High Street, Wellington, Telford, Shropshire, TF1 1JU	A4	PDL	-129	0.00
W2016/0128	The Queens Head, Horton, Telford, Shropshire TF6 6DW	A4	PDL	85	
W2016/0256	29 High Street, Ironbridge, Telford, Shropshire, TF8 7AD	A4	PDL	13	
Use Class Net				-266	
Use Class Gross				358	
W2016/0163	19 Church Street, Wellington, Telford, Shropshire, TF1 1DD	A5		-69	
W2016/0962	Layby A518 (Hortonwood Roundabout - Trench Lock Interchange) Hortonwood, Telford, Shropshire	A5		0	
W2012/0778	Land off, Beaconsfield/Burford Brookside TF3 1NT	A5	PDL	-130	2.20
W2012/0778	Land off, Beaconsfield/Burford Brookside TF3 1NT	A5	PDL	87	2.20

Application No	Address	Use Class	Previous Use	Sq M	Hectares
W2015/0819	Site of The Trench Tavern, Trench Road, Trench, Telford, Shropshire	A5	PDL	-195	0.00
Use Class Net				-307	
Use Class Gross				87	
W2015/0412	Transport Yard, Heath Hill Industrial Estate, Dawley, Telford, Shropshire, TF4 2RJ	b1a	PDL	-100	0.00
Use Class Net				-100	
Use Class Gross				0	
W2016/0417	Site of Royal Victoria Hotel, St Marys Street, Newport, Shropshire	C1		-50	
W2015/0777	Grove House Hotel, 17 Whitchurch Road, Wellington, Telford, Shropshire, TF1 3DS	C1	PDL	-580	0.00
W2015/0919	3 Southside, Church Hill, Ironbridge, Telford, Shropshire, TF8 7PZ	C1	PDL	0	
Use Class Net				-630	
Use Class Gross				0	
W2014/0316	Harper Adams University, Edgmond, Newport, Shropshire, TF10 8NB	C2	GR	2510	0.00
W2015/0359	Angel Centre, Osbaston, Telford, Shropshire, TF6 6RB	C2	PDL	-133500	
W2016/1028	Overley Hall School, Overley, Telford, Shropshire, TF6 5HE	C2	PDL	74	
W2016/1028	Overley Hall School, Overley, Telford, Shropshire, TF6 5HE	C2	PDL	-60	
Use Class Net				-130976	
Use Class Gross				2584	
W2013/0625	Brook Farm Chetwynd Newport TF10 8BL	C3	PDL	-103	350.00
Use Class Net				-103	
Use Class Gross				0	
W2014/0621	The Acorns, St Georges Road, Donnington Wood, Telford, Shropshire, TF2 7NJ	D1	GR	192	0.00
W2016/1070	Land adjacent, 44 Wombridge Road, Wombridge, Telford, Shropshire	D1	GR	71	
W2013/0661	Lord Silkin School Stirchley	D1	PDL	9611	4.83
W2014/0419	New Lawley Primary School, Off Martingale Way, Lawley, Telford, Shropshire	D1	PDL	1500	0.00
W2015/0084	Fuller/Jordan House, Hall Park Way, Telford Town Centre, Telford, Shropshire, TF3 4NF	D1	PDL	1708	0.00
W2015/0102	The Parish Room, Madeley Road, Ironbridge, Telford, Shropshire, TF8 7PP	D1	PDL	-1411	0.00
W2015/0750	Wrekin College, Sutherland Road, Wellington, Telford, Shropshire, TF1 3BH	D1	PDL	393	0.00

Application No	Address	Use Class	Previous Use	Sq M	Hectares
W2015/0777	Grove House Hotel, 17 Whitchurch Road, Wellington, Telford, Shropshire, TF1 3DS	D1	PDL	580	0.00
W2015/0812	Newport Cottage Care Centre, Upper Bar, Newport, Shropshire, TF10 7EH	D1	PDL	58	0.00
W2015/0907	Hadley Learning Community, Waterloo Road, Ketley, Telford, Shropshire, TF1 5NU	D1	PDL	357	0.00
W2015/0990	The Princess Margaret Building, Harper Adams University College, Edgmond, Newport, Shropshire, TF10 8NB	D1	PDL	1028	0.00
W2015/1047	Suite 3 Bishton Court, Boyd Close, Telford Town Centre, Telford, Shropshire, TF3 4JE	D1	PDL	225	0.00
W2016/0146	The Mount, Haygate Road, Wellington, Telford, Shropshire, TF1 1QZ	D1	PDL	-382	
W2016/0279	8-10 Duke Street, Wellington, Telford, Shropshire, TF1 1BJ	D1	PDL	241	
W2016/0346	Castle House School, Chetwynd End, Newport, Shropshire, TF10 7JE	D1	PDL	-198	
W2016/0346	Castle House School, Chetwynd End, Newport, Shropshire, TF10 7JE	D1	PDL	198	
W2016/0451	Units 4 & 5 Audley Avenue Business Park, Audley Avenue, Newport, Shropshire, TF10 7BX	D1	PDL	520	
W2016/0451	Units 4 & 5 Audley Avenue Business Park, Audley Avenue, Newport, Shropshire, TF10 7BX	D1	PDL	115	
W2016/0461	Church Close Surgery, Church Close, Madeley, Telford, Shropshire, TF7 5BP	D1	PDL	-133	
W2016/0502	2A New Street, Newport, Shropshire, TF10 7AX	D1	PDL	52	
W2016/0648	Captain Webb Primary School, Webb Crescent, Dawley, Telford, Shropshire, TF4 3DU	D1	PDL	131	
W2016/0900	Charlton School, Severn Drive, Dothill, Telford, Shropshire, TF1 3LE	D1	PDL	-81776	
W2016/1035	GP Walk in Centre Princess Royal Hospital, Grainger Drive, Apley, Telford, Shropshire, TF1 6TF	D1	PDL	396	
W2017/0038	Harper Adams University, Edgmond, Newport, Shropshire, TF10 8NB	D1	PDL	-400	
W2017/0135	Suite C2, The Place, New Street, Oakengates, Telford, Shropshire, TF2 6EP	D1	PDL	34	
Use Class Net				-66890	
Use Class Gross				17410	
W2012/0778	Land off, Beaconsfield/Burford Brookside TF3 1NT	D2	PDL	-662	2.20
W2012/0778	Land off, Beaconsfield/Burford Brookside TF3 1NT	D2	PDL	353	2.20
W2015/0746	Meeting Point House, Southwater Way, Telford Town Centre, Telford, Shropshire, TF3 4HS	D2	PDL	390	0.00
W2015/1004	Hollinswood Community Centre, 7 Downmead, Hollinswood, Telford, Shropshire, TF3 2EW	D2	PDL	7	0.00
W2016/0258	Unit 42, Ketley Business Park, Ketley, Telford, Shropshire, TF1 5JD	D2	PDL	3000	
W2016/0486	Units 18-19, Ketley Business Park, Ketley, Telford, Shropshire, TF1 5JD	D2	PDL	183	
W2016/0996	Unit 7, Trench Lock 2, Trench Lock, Telford, Shropshire, TF1 5SW	D2	PDL	55	

Application No	Address	Use Class	Previous Use	Sq M	Hectares
Use Class Net				3326	
Use Class Gross				3988	
W2016/0203	Land rear of 23 High Street, Newport, Shropshire	Other	GR	-330	
Use Class Net				-330	
Use Class Gross				0	
W2016/0417	Site of Royal Victoria Hotel, St Marys Street, Newport, Shropshire	SG		50	
W2013/0938	Holyhead Road Wellington TF6 5AB	SG	GR	-35000	0.00
W2014/0103	Lees Farm, Coalport Road, Madeley, Telford, Shropshire, TF7 5DS	SG	GR	33	0.00
W2015/1115	Site of Deepdale Farm, Chester Road, Chetwynd, Newport, Shropshire	SG	GR	7960	
W2016/0159	Land adjacent Caravan Site, Lodge Road, Donnington Wood, Telford, Shropshire	SG	GR	7400	0.74
W2016/0295	Sidney House, Kynnersley, Telford, Shropshire, TF6 6EB	SG	GR	298	
W2016/0462	Land East of Coopers Sausage Rolls, Poynton Road, Roden, Telford, Shropshire	SG	GR	264	
W2016/0581	Walcot Grange, Walcot, Telford, Shropshire, TF6 5ER	SG	GR	268	
W2012/0583	Blockleys Bricks Ltd Sommerfeld Road Hadley	SG	PDL	46	4.35
W2015/0476	Site of former Civic Amenity Site, Hills Lane, Madeley, Telford, Shropshire,	SG	PDL	-3000	0.00
W2015/0742	Wrekin Motor Spares, Rookery Road, Telford, Shropshire, TF2 9BW	SG	PDL	259	0.00
W2015/0756	23 Haybridge Road, Hadley, Telford, Shropshire, TF1 5LR	SG	PDL	0	0.00
W2015/0964	Unit 14, Tweedale North, Madeley, Telford, Shropshire, TF7 4JR	SG	PDL	-259	
W2015/1149	Former Petrol Station, Finger Road, Dawley, Telford, Shropshire, TF4 3LB	SG	PDL	-430	
W2016/0090	Former Bus Station, King Street, Dawley, Telford, Shropshire	SG	PDL	3800	
W2016/0138	Yard A-D, Halesfield 16, Halesfield, Telford, Shropshire	SG	PDL	-1922	
W2016/0149	The Cottage Kennels and Cattery, Grange Lane, Red Hill, Telford, Shropshire, TF2 9PB	SG	PDL	30	
W2016/0242	Land adjacent New Street Garage, New Street, Newport, Shropshire	SG	PDL	0	
W2016/0262	2 Hordley Road, Wellington, Telford, Shropshire, TF1 3NR	SG	PDL	52	
W2016/0305	30A High Street, Newport, Shropshire, TF10 7AQ	SG	PDL	106	
W2016/0312	Land adjacent Majestic Distribution (Bitec), Halesfield 2, Halesfield, Telford, Shropshire	SG	PDL	5133	
W2016/0343	15 Church Street, St Georges, Telford, Shropshire, TF2 9JU	SG	PDL	-48	
W2016/0354	48 New Road, Wrockwardine Wood, Telford, Shropshire, TF2 6JZ	SG	PDL	0	

Application No	Address	Use Class	Previous Use	Sq M	Hectares
W2016/0572	The Old Vicarage, Priorslee Road, St Georges, Telford, Shropshire, TF2 9EA	SG	PDL	344	
W2016/0572	The Old Vicarage, Priorslee Road, St Georges, Telford, Shropshire, TF2 9EA	SG	PDL	-344	
W2016/0720	21 Dinthill, Hollinswood, Telford, Shropshire, TF3 2DT	SG	PDL	12	
W2016/0751	Rollasons Millfields, Haybridge Road, Wellington, Telford, Shropshire, TF1 2NW	SG	PDL	327	
W2016/0899	Unit D, Madeley Shopping Malls, High Street, Madeley, Telford, Shropshire, TF7 5BQ	SG	PDL	57	
W2016/0951	The Workshop, Wrens Nest Lane, Ketley, Telford, Shropshire, TF1 5HL	SG	PDL	37	
W2016/0951	The Workshop, Wrens Nest Lane, Ketley, Telford, Shropshire, TF1 5HL	SG	PDL	-39	
W2016/0967	44 and 45, Park Street, Madeley, Telford, Shropshire, TF7 5LD	SG	PDL	64	
W2017/0068	64 High Street, Dawley, Telford, Shropshire, TF4 2EX	SG	PDL	41	
Use Class Net				-14462	
Use Class Gross				26580	
Borough Net Totals				-206721	
Borough Gross Totals				57660	

Appendix 4c - Town Centre Uses Completed Floorspace 2016/17

Application No	Address	Use Class	Previous Use	Sq M	Hectares
W2012/0778	Land off, Beaconsfield/Burford Brookside TF3 1NT	A1	PDL	534	2.20
W2012/0778	Land off, Beaconsfield/Burford Brookside TF3 1NT	A1	PDL	-500	2.20
W2015/0039	Site of The Wrekin View PH, Milners Lane, Dawley Bank, Telford, Shropshire	A1	PDL	279	0.09
W2015/0746	Meeting Point House, Southwater Way, Telford Town Centre, Telford, Shropshire, TF3 4HS	A1	PDL	-18	0.00
W2015/0978	Site of 72B Furnace Lane, Trench, Telford, Shropshire	A1	PDL	-32	
W2016/0262	2 Hordley Road, Wellington, Telford, Shropshire, TF1 3NR	A1	PDL	-52	
W2016/0343	15 Church Street, St Georges, Telford, Shropshire, TF2 9JU	A1	PDL	48	
W2016/0406	180 Wombridge Road, Trench, Telford, Shropshire, TF2 6PU	A1	PDL	37	
W2016/0422	Aldi Foodstore Ltd, Audley Avenue, Newport, Shropshire, TF10 7BX	A1	PDL	19	
W2016/0534	Argyll House, Bank Road, Dawley Bank, Telford, Shropshire, TF4 2BB	A1	PDL	144	
W2016/0756	Units 1-3, Audley Avenue Business Park, Audley Avenue, Shropshire, Newport, TF10 7BX	A1	PDL	390	
W2016/0931	6A Bagley Drive, Wellington, Telford, Shropshire, TF1 3NP	A1	PDL	80	
W2015/1047	Suite 3 Bishton Court, Boyd Close, Telford Town Centre, Telford, Shropshire, TF3 4JE	A2	PDL	-225	0.00
W2016/0880	Sidney's Pet Presents and Grooming, The Old Stables, High Street, Ironbridge, Telford, Shropshire, TF8 7AD	A2	PDL	-52	
W2016/0478	Pickstock Ashby Ltd, Unit E, Hortonwood 45, Hortonwood, Telford, Shropshire, TF1 7FA	B1(a)		24	
W2014/0969	Plot 4, Telford 54, Naird Lane, Nedge Hill, Telford, Shropshire	B1(a)	GR	220	0.31
W2015/1103	Harper Adams University College, Edgmond, Newport, Shropshire, TF10 8NB	B1(a)	GR	100	0.00
W2016/0478	Pickstock Ashby Ltd, Unit E, Hortonwood 45, Hortonwood, Telford, Shropshire, TF1 7FA	B1(a)	GR	24	
W2012/0778	Land off, Beaconsfield/Burford Brookside TF3 1NT	B1(a)	PDL	80	2.20
W2012/0778	Land off, Beaconsfield/Burford Brookside TF3 1NT	B1(a)	PDL	-69	2.20
W2013/0483	Merrythought Ltd, Merrythought Village Dale End Coalbrookdale TF8 7NJ	B1(a)	PDL	558	0.00
W2013/0484	Merrythought Ltd, Merrythought Village Dale End Coalbrookdale TF8 7NJ	B1(a)	PDL	-160	0.00
W2014/0726	Telford & Wrekin Council For Voluntary Service, The Liz Yates Centre, Lightmoor Road, Lightmoor, Telford, Shropshire	B1(a)	PDL	-144	0.30
W2015/0084	Fuller/Jordan House, Hall Park Way, Telford Town Centre, Telford, Shropshire, TF3 4NF	B1(a)	PDL	-1708	0.00
W2016/0138	Yard A-D, Halesfield 16, Halesfield, Telford, Shropshire	B1(a)	PDL	80	

Application No	Address	Use Class	Previous Use	Sq M	Hectares
W2016/0208	Punjabi Telford Cultural Society, 19A Church Parade, Wombbridge, Telford, Shropshire	B1(a)	PDL	50	
W2016/0312	Land adjacent Majestic Distribution (Bitec), Halesfield 2, Halesfield, Telford, Shropshire	B1(a)	PDL	87	
W2016/0366	Dale Brothers UK Ltd, Hortonwood 67, Hortonwood, Telford, Shropshire, TF1 7GU	B1(a)	PDL	30	
W2016/0449	The Lighting Association, Stafford Park 7, Stafford Park, Telford, Shropshire, TF3 3BQ	B1(a)	PDL	340	
W2016/0449	The Lighting Association, Stafford Park 7, Stafford Park, Telford, Shropshire, TF3 3BQ	B1(a)	PDL	-337	
W2016/1028	Overley Hall School, Overley, Telford, Shropshire, TF6 5HE	B1(a)	PDL	-38	
W2016/1028	Overley Hall School, Overley, Telford, Shropshire, TF6 5HE	B1(a)	PDL	55	
W2016/1035	GP Walk in Centre Princess Royal Hospital, Grainger Drive, Apley, Telford, Shropshire, TF1 6TF	B1(a)	PDL	44	
W2012/0778	Land off, Beaconsfield/Burford Brookside TF3 1NT	D2	PDL	-662	2.20
W2012/0778	Land off, Beaconsfield/Burford Brookside TF3 1NT	D2	PDL	353	2.20
W2015/0746	Meeting Point House, Southwater Way, Telford Town Centre, Telford, Shropshire, TF3 4HS	D2	PDL	390	0.00
W2015/1004	Hollinswood Community Centre, 7 Downemead, Hollinswood, Telford, Shropshire, TF3 2EW	D2	PDL	7	0.00
W2016/0258	Unit 42, Ketley Business Park, Ketley, Telford, Shropshire, TF1 5JD	D2	PDL	3000	
W2016/0486	Units 18-19, Ketley Business Park, Ketley, Telford, Shropshire, TF1 5JD	D2	PDL	183	
W2016/0996	Unit 7, Trench Lock 2, Trench Lock, Telford, Shropshire, TF1 5SW	D2	PDL	55	
Area Net				3213	
Area Gross				7211	
Dawley					
W2017/0068	64 High Street, Dawley, Telford, Shropshire, TF4 2EX	A2	PDL	-41	
Area Net				-41	
Area Gross				0	
Hadley					
W2014/0571	42 High Street, Hadley, Telford, Shropshire, TF1 5NG	B1(a)	PDL	-113	0.00
Area Net				-113	
Area Gross				0	
Madeley					
W2016/0387	Former Madeley Court School, Land off Parkway, Madeley, Telford, Shropshire	A1	PDL	2268	

Application No	Address	Use Class	Previous Use	Sq M	Hectares
W2016/0899	Unit D, Madeley Shopping Malls, High Street, Madeley, Telford, Shropshire, TF7 5BQ	A1	PDL	-57	
W2016/0289	93 Hills Lane Drive, Madeley, Telford, Shropshire, TF7 4BY	B1(a)	PDL	0	
Area Net				2211	
Area Gross				2268	
Newport					
W2016/0305	30A High Street, Newport, Shropshire, TF10 7AQ	B1(a)	PDL	-106	
W2016/0502	2A New Street, Newport, Shropshire, TF10 7AX	B1(a)	PDL	-52	
Area Net				-158	
Area Gross				0	
Oakengates					
W2017/0135	Suite C2, The Place, New Street, Oakengates, Telford, Shropshire, TF2 6EP	B1(a)	PDL	-34	
Area Net				-34	
Area Gross				0	
Wellington					
W2014/1097	Pipeline Merchants Ltd, 23 High Street, Wellington, Telford, Shropshire, TF1 1JW	A1	PDL	-193	0.00
W2014/1138	5 Church Street, Wellington, Telford, Shropshire, TF1 1DD	A1	PDL	22	0.07
W2016/0279	8-10 Duke Street, Wellington, Telford, Shropshire, TF1 1BJ	A1	PDL	-98	
W2016/0694	Aldi Foodstore Ltd, Grooms Alley, Wellington, Telford, Shropshire, TF1 1BN	A1	PDL	-1144	
W2017/0124	The Co-operative Bank, 17 Market Square, Wellington, Telford, Shropshire, TF1 1BU	A2	PDL	-112	
W2016/0279	8-10 Duke Street, Wellington, Telford, Shropshire, TF1 1BJ	B1(a)	PDL	-143	
W2016/0893	15 Queen Street, Wellington, Telford, Shropshire, TF1 1EH	B1(a)	PDL	0	
Area Net				-1668	
Area Gross				22	
Borough Net Totals				3410	
Borough Gross Totals				9501	

Appendix 5 - Non-residential Under Construction 2016/17

Year	Application No	Address	Change	Use Class	Hectares	Sq M
2017	W2010/0053	27 High Street Hadley	CU	A1	45.00	-33
Ward Totals					45.00	-33
Apley Castle						
2017	W2016/1085	Apley Village Day Nursery, Grainger Drive, Apley, Telford, Shropshire, TF1 6UL	NEW	D1		223
Ward Totals						223
Church Aston and Lilleshall						
2017	W2015/0293	Land North West of existing MOD Donnington, Donnington, Telford, Shropshire	NEW	B1(a)	0.00	2787
2017	W2015/0293	Land North West of existing MOD Donnington, Donnington, Telford, Shropshire	NEW	B8	0.00	81290
2017	W2017/0090	Lynncroft, 24 Lynn, Newport, Shropshire, TF10 9BB	CU	C1		128
Ward Totals					0.00	84205
College						
2017	W2007/0667	Telford Islamic Centre, 88 King Street Wellington	CU	D1	0.23	2440
2017	W2007/0667	Telford Islamic Centre, 88 King Street Wellington	CU	D2	0.23	-2440
2017	W2015/1022	13 Market Square, Wellington, Telford, Shropshire, TF1 1BU	CU	B1(a)		-1600
2017	W2016/0130	Service Station, King Street, Wellington, Telford, Shropshire, TF1 3EY	CU	B2		28
2017	W2016/0130	Service Station, King Street, Wellington, Telford, Shropshire, TF1 3EY	EXT	B2		226
2017	W2016/0130	Service Station, King Street, Wellington, Telford, Shropshire, TF1 3EY	CU	SG		-28
Ward Totals					0.46	-1374
Cuckoo Oak						
2017	W2016/0106	Plot A, Halesfield 25, Halesfield, Telford, Shropshire	NEW	A1	0.00	575
2017	W2016/0765	Ingimex, Plot 11, Halesfield 19, Halesfield, Telford, Shropshire, TF7 4QT	EXT	B2		990
Ward Totals					0.00	1565

CU - Change of Use EXT - Extension DEM - Demolition REP - Replacement Building MOB - Mobile Unit

Year	Application No	Address	Change	Use Class	Hectares	Sq M
Dawley Magna						
2017	W2015/1030	Methodist Church, Stirchley Lane, Dawley, Telford, Shropshire, TF4 3SZ	EXT	A3		20
2017	W2015/1030	Methodist Church, Stirchley Lane, Dawley, Telford, Shropshire, TF4 3SZ	CU	A3		150
2017	W2015/1030	Methodist Church, Stirchley Lane, Dawley, Telford, Shropshire, TF4 3SZ	CU	D1		-150
Ward Totals						20
Donnington						
2017	W2016/0064	Land adjacent Copperlea, 2 Wrekin Drive, Donnington, Telford, Shropshire	NEW	D1		0
Ward Totals						0
Edgmond						
2017	W2016/0029	Harper Adams University College, Edgmond, Newport, Shropshire, TF10 8NB	NEW	B1(b)	0.00	2503
Ward Totals						0.00 2503
Ercall Magna						
2017	W2012/0323	Riverside Stars Lane Cold Hatton Heath	EXT	B1(a)	0.17	82
2017	W2012/0323	Riverside Stars Lane Cold Hatton Heath	CU	B1(a)	0.17	69
2017	W2012/0323	Riverside Stars Lane Cold Hatton Heath	CU	B1(c)	0.17	-69
2017	W2014/0714	Unit 3, The Quarry, Waters Upton, Telford, Shropshire, TF6 6NP	EXT	B2	0.37	148
Ward Totals						0.88 230
Hadley and Leegomery						
2017	W2013/0011	40 Castle Street, Hadley, TF1 5RA Hadley	EXT	A5	0.10	30
2017	W2015/1064	Land east of Queensway HLC, Queensway, Hortonwood, Telford, Shropshire	NEW	B2		6400
2017	W2015/1064	Land east of Queensway HLC, Queensway, Hortonwood, Telford, Shropshire	NEW	B8		3156
2017	W2016/0015	Pickstock Ashby Ltd, Hortonwood 45, Hortonwood, Telford, Shropshire, TF1 7FA	EXT	B2	0.00	1052
2017	W2016/0598	Pickstock Ashby Ltd, Unit E, Hortonwood 45, Hortonwood, Telford, Shropshire, TF1 7FA	EXT	B2		1052
Ward Totals						0.10 11690

CU - Change of Use EXT - Extension DEM - Demolition REP - Replacement Building MOB - Mobile Unit

Year	Application No	Address	Change	Use Class	Hectares	Sq M
Haygate						
2017	W2014/1098	23 Walker Street, Wellington, Telford, Shropshire, TF1 1BD	CU	B1(a)	0.00	222
2017	W2014/1098	23 Walker Street, Wellington, Telford, Shropshire, TF1 1BD	CU	D1	0.00	-727
2017	W2014/1138	5 Church Street, Wellington, Telford, Shropshire, TF1 1DD	CU	A1	0.07	515
2017	W2015/0662	11 - 13 Crown Street, Wellington, Telford, Shropshire, TF1 1LP	CU	B1(a)	0.00	-72
2017	W2016/0694	Aldi Foodstore Ltd, Grooms Alley, Wellington, Telford, Shropshire, TF1 1BN	REP	A1		1653
2017	W2016/0966	Wellington Town Council/Wellington Civic Offices and Leisure Centre, Tan Bank, Wellinto	CU	B1(a)		-120
2017	W2016/0966	Wellington Town Council/Wellington Civic Offices and Leisure Centre, Tan Bank, Wellinto	CU	D2		120
Ward Totals					0.07	1591
Horsehay and Lightmoor						
2017	W2012/0292	Horsehay Limited, Horsehay House Bridge Road Horsehay	CU	B1(a)	0.13	-540
Ward Totals					0.13	-540
Ironbridge Gorge						
2017	W2014/0844	Central Cafe, 32A High Street, Ironbridge, Telford, TF8 7AD	EXT	A3	272.00	42
2017	W2016/0676	Museum Of Iron, Ironbridge Gorge Museum Trust, Coach Road, Coalbrookdale, Telford, Sh	CU	A3		-91
2017	W2016/0676	Museum Of Iron, Ironbridge Gorge Museum Trust, Coach Road, Coalbrookdale, Telford, Sh	CU	D1		91
Ward Totals					272.00	42
Ketley and Oakengates						
2017	W2005/0906	WELLINGS LTD WASTE RECYCLING CENTRE, RO Ketley	NEW	Other	2.64	500
Ward Totals					2.64	500
Lawley and Overdale						
2017	W2015/0526	Northern Quarter, Telford Shopping Centre, Telford, Shropshire	REP	A1	0.00	4380
2017	W2015/0526	Northern Quarter, Telford Shopping Centre, Telford, Shropshire	EXT	A1	0.00	1560
2017	W2015/0526	Northern Quarter, Telford Shopping Centre, Telford, Shropshire	REP	A3	0.00	650
Ward Totals					0.00	6590

CU - Change of Use EXT - Extension DEM - Demolition REP - Replacement Building MOB - Mobile Unit

Year	Application No	Address	Change	Use Class	Hectares	Sq M
Madeley						
2017	W2016/0387	Former Madeley Court School, Land off Parkway, Madeley, Telford, Shropshire	NEW	A1		697
2017	W2016/0387	Former Madeley Court School, Land off Parkway, Madeley, Telford, Shropshire	NEW	A1		190
2017	W2016/0387	Former Madeley Court School, Land off Parkway, Madeley, Telford, Shropshire	NEW	A3		93
2017	W2016/0387	Former Madeley Court School, Land off Parkway, Madeley, Telford, Shropshire	NEW	SG		168
Ward Totals						1148
Malinslee						
2017	W2016/0646	Land fronting Southwater One, Park Avenue, Southwater, Telford Town Centre, Telford, Shr	NEW	A3		323
2017	W2016/0646	Land fronting Southwater One, Park Avenue, Southwater, Telford Town Centre, Telford, Shr	NEW	C1		2442
Ward Totals						2765
Newport South						
2017	W92/0970	Newport Silo Audley Avenue Newport	DEM	B8	2.91	-1340
Ward Totals					2.91	-1340
Priorslee						
2017	W2015/1013	Business And Technology Centre, University Of Wolverhampton, Shifnal Road, Priorslee, T	EXT	D1	0.00	560
Ward Totals					0.00	560
The Nedge						
2017	W2015/0342	Unit B4, Stafford Park 15, Stafford Park, Telford, Shropshire, TF3 3BB	EXT	B1(c)	0.00	66
2017	W2016/0471	Plot 6, Telford 54, Nedge Hill, Telford, Shropshire	NEW	B2		24163
Ward Totals					0.00	24229
Wrockwardine						
2017	W2012/0672	Upper Coalmoor Farm Moreton Coppice Coalmoor	EXT	B1(b)	0.03	379
2017	W2014/0859	Sunnymeade Kennels And Cattery, B4394, Allscott, Telford, Shropshire, TF6 5EQ	CU	SG	0.00	2556
2017	W2015/0024	The Piggeries, Grove Lane, Rodington, Telford, Shropshire	CU	B1(c)	0.12	-200
2017	W2015/0505	Lower Huntington Farm, Little Wenlock, Telford, Shropshire, TF6 5AP	NEW	B8	0.00	664

CU - Change of Use EXT - Extension DEM - Demolition REP - Replacement Building MOB - Mobile Unit

Year	Application No	Address	Change	Use Class	Hectares	Sq M
2017	W2015/0505	Lower Huntington Farm, Little Wenlock, Telford, Shropshire, TF6 5AP	CU	Other	0.00	-1144
Ward Totals					0.15	2255
Wrockwardine Wood and Trench						
2017	W2017/0010	Trench Tots, Gibbons Road, Trench, Telford, Shropshire, TF2 7JR	NEW	D1		400
Ward Totals						400
Borough Totals					324.33	137229

CU - Change of Use EXT - Extension DEM - Demolition REP - Replacement Building MOB - Mobile Unit

Appendix 6a - Employment Land New Build Not Started 2016/17

Year	Application No	Address	Use Class	Hectares	Sq M
Church Aston and Lilleshall					
2017	W2014/0492	Lubstree Park, Humber Lane, Telford, Shropshire, TF2 8LW	B1(c)	1.44	1140
Ward Totals				1.44	1140
Dawley Magna					
2017	W2015/0095	The Mill, Heath Hill Industrial Estate, Dawley, Telford, Shropshire, TF4 2JX	B8	0.62	162
Ward Totals				0.62	162
Donnington					
2017	W2014/0054	MOD Donnington B8 site Corner of Hortonwood Roundabout Corner of Hortonwood Roundabout	B1(a)	7.84	232
2017	W2014/0054	MOD Donnington B8 site Corner of Hortonwood Roundabout Corner of Hortonwood Roundabout	B8	7.84	26000
Ward Totals				15.68	26232
Edgmond					
2017	W2015/0753	Harper Adams University College, Edgmond, Newport, Shropshire, TF10 8NB	B8	0.02	200
Ward Totals				0.02	200
Ercall Magna					
2017	W2015/0157	Former Dairy Crest Ltd, Crudgington, Telford, Shropshire	B1(c)	6.08	735
Ward Totals				6.08	735
Hadley and Leegomery					
2017	W2015/0386	Land adjacent Sigma & Staubli House, Hadley Park East, Hadley, Telford, Shropshire	B1(a)	1.66	1449
2017	W2015/0386	Land adjacent Sigma & Staubli House, Hadley Park East, Hadley, Telford, Shropshire	B2	1.66	3763
2017	W2015/0387	Trench Lock 24/7, Trench Lock Petrol Station, Trench Lock, Hadley, Telford, Shropshire, TF1 6SZ	B8	0.58	283
Ward Totals				3.90	5495
Ketley and Oakengates					

Year	Application No	Address	Use Class	Hectares	Sq M
2017	W2016/0243	Trio Furnishings, Unit 3 Holyhead Road, Ketley, Telford, Shropshire, TF1 5DS	B8	0.03	258
2017	W2016/0395	Land between 29 & 33 Station Road, Ketley, Telford, Shropshire	B1(c)	0.02	89.6
Ward Totals				0.05	347.6
Priorslee					
2017	W2014/0701	Greenways, Ashley Road, St Georges, Telford, Shropshire, TF2 9LF	B1(c)	4.94	102.5
Ward Totals				4.94	102.5
The Nedge					
2017	W2015/0042	Earlyworld, Kingsland House, Stafford Court, Stafford Park, Telford, Shropshire, TF3 3BD	B1(a)	0.19	500
2017	W2015/0666	Plot 6, Telford 54, Nedge Hill, Telford, Shropshire	B8	15.50	35837
2017	W2015/0862	Plot 2, T54, The Naird, Telford, Shropshire	B2	3.04	9793
2017	W2015/0863	Plot 3, Telford 54, Nedge Hill, Telford, Shropshire	B8	1.24	3319
2017	W2015/0864	Plot 5, Telford 54, Nedge Hill, Telford, Shropshire	B2	1.62	52333
2017	W2015/0891	Plot 1C, Telford 54, Nedge Hill, Telford, Shropshire	B1(a)	0.27	23
2017	W2015/0891	Plot 1C, Telford 54, Nedge Hill, Telford, Shropshire	B8	0.27	350
2017	W2016/0784	Single Source Ltd, Stafford Park 6, Stafford Park, Telford, Shropshire, TF3 3AT	B1(c)	0.77	31
Ward Totals				22.90	102186
Wrockwardine					
2017	W2014/0113	Former British Sugar site, Allscott, Telford, Shropshire	B1(a)	36.60	200
Ward Totals				36.60	200
Borough Totals				92.23	136800.1

Appendix 6b - Other Employment Land Not Started 2016/17

Year	Application No	Address	Change	Use Class	Hectares	Sq M
Apley Castle						
2017	W2014/0746	Maxell Europe Ltd, Hortonwood, Telford, Shropshire, TF1 6DA	DEM	B2	0.00	-5574
Ward Totals					0.00	-5574
Church Aston and Lilleshall						
2017	W2014/0492	Lubstree Park, Humber Lane, Telford, Shropshire, TF2 8LW	CU	B1(c)	0.00	-3560
2017	W2015/0030	Land between Preston Cottage 15 & Village Farm, Preston, Upon The Weald Moors, Telfor	DEM	B1(c)	0.09	-100
Ward Totals					0.09	-3660
College						
2017	W2016/0497	16A Market Square, Wellington, Telford, Shropshire, TF1 1BU	CU	B1(a)		-183
Ward Totals						-183
Cuckoo Oak						
2017	W2017/0019	Unit 3, Halesfield 16, Halesfield, Telford, Shropshire, TF7 4QS	CU	B1(c)		-63
Ward Totals						-63
Donnington						
2017	W2015/0149	Unit 29, St Georges Road Industrial Estate, St Georges Road, Donnington, Telford, Shrops	CU	B2	159.00	159
2017	W2016/0705	Unit 4, Donnington Wood Workshops, Bradley Road, Donnington, Telford, Shropshire, TF2	CU	B8		-89
Ward Totals					159.00	70
Edgmond						
2017	W2013/0398	The workshop High Street Edgmond TF10 8JW	DEM	B2	0.01	-30
2017	W2014/0977	Barn adjacent The Birch Moors, Adeney, Newport, Shropshire	CU	B1(c)	0.00	-84
2017	W2015/1079	Agricultural buildings adjacent Sambrook Hall Farm, Sambrook, Newport, Shropshire	CU	B1(c)		-370
Ward Totals					0.01	-484
Ercall Magna						

CU - Change of Use EXT - Extension DEM - Demolition REP - Replacement Building MOB - Mobile Unit

Year	Application No	Address	Change	Use Class	Hectares	Sq M
2017	W2016/0763	New Farm, Roden Lane, Roden, Telford, Shropshire, TF6 6BS	CU	B1(c)		-361
2017	W2016/1171	Site Of Meeson Hall, Meeson, Telford, Shropshire	CU	B1(c)		-1124
Ward Totals						-1485
Hadley and Leegomery						
2017	W2016/0797	Site of Haybridge Hall Flats, Haybridge Road, Hadley, Telford, Shropshire	CU	B1(a)		-32
Ward Totals						-32
Horsehay and Lightmoor						
2017	W2016/0533	Site of Sundown, Old Office Road, Dawley, Telford, Shropshire	DEM	B8		-40
Ward Totals						-40
Ironbridge Gorge						
2017	W2014/0649	Woodside House Barns, Woodside, Coalbrookdale, Telford, Shropshire, TF8 7ED	CU	B1(c)	400.00	-360
2017	W2014/0649	Woodside House Barns, Woodside, Coalbrookdale, Telford, Shropshire, TF8 7ED	DEM	B1(c)	400.00	-7
2017	W2015/0066	Former Dale End Garage Workshop, Dale End, Ironbridge, Telford, Shropshire	CU	B2		-124.8
Ward Totals					800.00	-491.8
Ketley and Oakengates						
2017	W2015/0275	27 Market Street, Oakengates, Telford, Shropshire, TF2 6EN	CU	B1(a)	0.00	190
2017	W2015/0339	Castlebridge Plant, Ketley Business Park, Ketley, Telford, Shropshire, TF1 5JD	CU	B8	0.00	-1569
Ward Totals					0.00	-1379
Lawley and Overdale						
2017	W2015/0795	Unit A6, Dawley Bank Workshops, Cavan Drive, Dawley Bank, Telford, Shropshire, TF4 2B	MOB	B1(a)	0.00	51
2017	W2015/0857	Easy Care Products Ltd, Chapel Workshops, Park Lane, Old Park, Telford, Shropshire, TF3	CU	B1(c)	0.00	-180
2017	W2016/0677	Site of Wrekin Pneumatics (Telford) Ltd/Wrekin Garden Machinery/Kleaning Equipment We	DEM	B2		-900
Ward Totals					0.00	-1029
Madeley						
2017	W2013/0469	Upper House Madeley 16 Church Street Madeley TF7 5BW	CU	B1(a)	0.00	-175

CU - Change of Use EXT - Extension DEM - Demolition REP - Replacement Building MOB - Mobile Unit

Year	Application No	Address	Change	Use Class	Hectares	Sq M
2017	W2014/0162	Unit 8, Madeley Industrial Estate, Station Road, Madeley, Telford, Shropshire, TF7 5EF	CU	B8	0.00	-179.95
2017	W2014/0357	Majestic Distribution Bitec, Tweedale North, Madeley, Telford, Shropshire, TF7 4JT	EXT	B1(a)	0.00	25
2017	W2014/0357	Majestic Distribution Bitec, Tweedale North, Madeley, Telford, Shropshire, TF7 4JT	EXT	B8	0.00	5
Ward Totals					0.00	-324.95
Newport South						
2017	W2017/0095	1 & 2 The Maltings, Springfields, Newport, Shropshire, TF10 7EZ	CU	B8		-150
2017	W92/0970	Newport Silo Audley Avenue Newport	REP	B8	2.91	1340
Ward Totals					2.91	1190
St. Georges						
2017	W2013/0901	Units 7-9, Gower Street Industrial Estate, Gower Street, St Georges, Telford, Shropshire, T	CU	B1(c)	0.28	-600
Ward Totals					0.28	-600
The Nedge						
2017	W2013/0161	Unit C2 Stafford Park 4 Stafford Park	CU	B8	0.30	459.8
2017	W2013/1020	Defence Support Group (DSG), Sapphire House, Stafford Park 6, Stafford Park, Telford, Sh	CU	B1(a)	1.39	-9000
2017	W2014/0698	Entanet International Ltd, Stafford Park 6, Stafford Park, Telford, Shropshire, TF3 3AT	REP	B1(c)	0.00	1566
2017	W2014/0698	Entanet International Ltd, Stafford Park 6, Stafford Park, Telford, Shropshire, TF3 3AT	DEM	B1(c)	0.00	-1566
Ward Totals					1.69	-8540.2
Wrockwardine						
2017	W2014/0113	Former British Sugar site, Allscott, Telford, Shropshire	CU	B2		-20600
2017	W2014/1115	Maxwell Amenity Ltd, Allscott Park, Telford, Shropshire, TF6 5DY	EXT	B2	0.00	625
2017	W2015/0637	Upper Coalmoor Farm, Coalmoor Road, Horsehay, Telford, Shropshire, TF4 2PX	EXT	B2	0.00	247
Ward Totals					0.00	-19728
Borough Totals					963.98	-42353.95

CU - Change of Use EXT - Extension DEM - Demolition REP - Replacement Building MOB - Mobile Unit

Appendix 6c - Other Non-residential Land Not Started 2016/17

Year	Application No	Address	Change	Use Class	Hectares	Sq M
2017	W2011/0157	Gower Street Youth Club Gower Street St Georges	CU	D1	0.50	-400
2017	W2011/0632	Land at Audley Avenue Newport	NEW	A1		5084
2017	W2014/0055	Crown Inn, 10 Hodge Bower, Ironbridge, Telford, Shropshire, TF8 7QG	CU	A4		-2298
2017	W2015/0208	Sutherland Co Operative Academy, Gibbons Road, Trench, Telford, Shropshire, TF2 7JR	DEM	D1		-73000
Ward Totals					0.50	-70614
Apley Castle						
2017	W2014/0746	Maxell Europe Ltd, Hortonwood, Telford, Shropshire, TF1 6DA	NEW	A1	0.00	700
Ward Totals					0.00	700
Arleston						
2017	W2015/0836	Land between Arleston Lane & Dawley Road, Arleston, Telford, Shropshire	NEW	C2		5800
Ward Totals						5800
Brookside						
2017	W2016/0485	The Old Rectory, Stirchley Village, Telford, Shropshire, TF3 1DY	CU	C1		-375
Ward Totals						-375
Church Aston and Lilleshall						
2017	W2016/0196	Unit 4, Mere Park Garden Centre, Stafford Road, Newport, Shropshire, TF10 9BY	EXT	A1		273
2017	W2016/0260	Land adjacent The Knoll, Church Aston, Newport, Shropshire	CU	SG		-7400
Ward Totals						-7127
College						
2017	W2013/0877	the Old Hall School Stanley Road Wellington TF1 3BL	NEW	D1	0.00	453
2017	W2014/0146	45A High Street, Wellington, Telford, Shropshire, TF1 1JW	CU	A2	0.00	-35
2017	W2014/0146	45A High Street, Wellington, Telford, Shropshire, TF1 1JW	CU	A5	0.00	35
2017	W2014/0494	Greggs, 1-3 New Street, Wellington, Telford, Shropshire, TF1 1LU	CU	A3	18.18	18.18

CU - Change of Use EXT - Extension DEM - Demolition REP - Replacement Building MOB - Mobile Unit

Year	Application No	Address	Change	Use Class	Hectares	Sq M
2017	W2014/0727	Telford College of Arts & Technology, Haybridge Road, Wellington, Telford, TF1 2NP	EXT	D1	0.00	1332
2017	W2016/0856	37 Park Street, Wellington, Telford, Shropshire TF1 3AE	CU	A1		-160
Ward Totals					18.18	1643.18
Cuckoo Oak						
2017	W2013/0609	Telford Hotel & Golf Resort Great Hay Drive Sutton Hill TF7 4DT	NEW	C1	0.00	1750
2017	W2013/0871	Unit 108C, Halesfield 13, Halesfield, Telford, Shropshire, TF7 4QR	NEW	SG	1.45	669
2017	W2016/0791	The Recycling Group, Halesfield 15, Halesfield, Telford, Shropshire, TF7 4LE	EXT	b1c		136
2017	W2017/0019	Unit 3, Halesfield 16, Halesfield, Telford, Shropshire, TF7 4QS	CU	A1		63
Ward Totals					1.45	2618
Dawley Magna						
2017	W2014/1049	40 High Street, Dawley, Telford, Shropshire, TF4 2EX	CU	A1	0.00	-66
2017	W2014/1049	40 High Street, Dawley, Telford, Shropshire, TF4 2EX	CU	A5	0.00	66
2017	W2016/0133	Light House Building & Pool House, Webb Crescent, Dawley, Telford, Shropshire, TF4 3DU	EXT	D2		68
2017	W2016/0337	11 & 11A Burton Street, Dawley, Telford, Shropshire, TF4 2ES	CU	A1		-31
2017	W2016/0337	11 & 11A Burton Street, Dawley, Telford, Shropshire, TF4 2ES	CU	A5		31
2017	W2016/0842	Lord Hill Inn, High Street, Dawley, Telford, Shropshire, TF4 2EX	EXT	A3		173
2017	W2016/0842	Lord Hill Inn, High Street, Dawley, Telford, Shropshire, TF4 2EX	CU	A3		133
2017	W2016/0842	Lord Hill Inn, High Street, Dawley, Telford, Shropshire, TF4 2EX	CU	A4		-133
2017	W2016/0954	Land East of Southall Play Area, Southall Road, Aqueduct, Telford, Shropshire	CU	SG		0
Ward Totals					0.00	241
Donnington						
2017	W2014/0384	Venning Barracks, MOD Donnington, Humber Way, Donnington, Telford, Shropshire, TF2 8	NEW	C2		282.5
2017	W2014/0384	Venning Barracks, MOD Donnington, Humber Way, Donnington, Telford, Shropshire, TF2 8	NEW	C2		208.5
2017	W2015/0149	Unit 29, St Georges Road Industrial Estate, St Georges Road, Donnington, Telford, Shrops	CU	A1	159.00	-159
2017	W2016/0705	Unit 4, Donnington Wood Workshops, Bradley Road, Donnington, Telford, Shropshire, TF2	CU	D2		89
2017	W2016/0956	Site of Formula One Island Showrooms, St Georges Road, Donnington, Telford, Shropshire	NEW	D2		380

CU - Change of Use EXT - Extension DEM - Demolition REP - Replacement Building MOB - Mobile Unit

Year	Application No	Address	Change	Use Class	Hectares	Sq M
2017	W2016/0956	Site of Formula One Island Showrooms, St Georges Road, Donnington, Telford, Shropshire	CU	SG		-380
Ward Totals					159.00	421
Edgmond						
2017	W2014/0316	Harper Adams University, Edgmond, Newport, Shropshire, TF10 8NB	NEW	C2	0.00	1256.9
2017	W2014/0824	Sutherland Arms, Tibberton, Newport, Shropshire, TF10 8NN	EXT	A3	0.00	23
2017	W2016/0010	Harper Adams University College, Edgmond, Newport, Shropshire, TF10 8NB	NEW	D1	0.00	1350
2017	W2016/0659	Site of 62 Plantation Road, Tibberton, Newport, Shropshire	CU	SG		-1000
2017	W2016/0800	Deepdale Farm, Chester Road, Chetwynd, Newport, TF10 8BH	NEW	SG		999
2017	W2017/0039	Harper Adams University, Edgmond, Newport, Shropshire TF10 8NB	NEW	D1		431
Ward Totals					0.00	3059.9
Ercall						
2017	W2013/0342	Birtley House 285 Holyhead Road Wellington TF1 2EW	CU	C1	0.00	0
2017	W2015/0781	Orleton Hall, The Beaters Room, Holyhead Road, Wellington, Telford, Shropshire	CU	C1		95
Ward Totals					0.00	95
Ercall Magna						
2017	W2015/0878	High Ercall Methodist Church, Walton Avenue, High Ercall, Telford, Shropshire, TF6 6AJ	CU	D1	0.00	-125
2017	W2016/0315	Land to the West of Barnes Farm, Rowton, Telford, Shropshire	NEW	SG		22000
2017	W2016/0661	White Gates, 4 Crudgington Green, Telford, Shropshire, TF6 6JY	CU	C1		120
2017	W2016/0802	Oakhouse Farm, Ellerdine Heath, Telford, Shropshire, TF6 6RW	NEW	SG		459
Ward Totals					0.00	22454
Hadley and Leegomery						
2017	W2013/0567	Caravan And Camping Centre Stadium Way Hadley, Telford, TF1 5NN	DEM	SG	0.00	-5300
2017	W2016/0797	Site of Haybridge Hall Flats, Haybridge Road, Hadley, Telford, Shropshire	CU	D2		-64
2017	W2017/0051	Land West of Household Recycling Centre, Hortonwood 60, Hortonwood, Telford, Shropshir	NEW	SG	0.90	300
Ward Totals					0.90	-5064

CU - Change of Use EXT - Extension DEM - Demolition REP - Replacement Building MOB - Mobile Unit

Year	Application No	Address	Change	Use Class	Hectares	Sq M
Haygate						
2017	W2016/1074	The Birches, 57 Wrockwardine Road, Wellington, Telford, Shropshire, TF1 3DA	CU	C2		500
2017	W2016/1074	The Birches, 57 Wrockwardine Road, Wellington, Telford, Shropshire, TF1 3DA	EXT	C2		210
Ward Totals						710
Horsehay and Lightmoor						
2017	W2013/0902	Hughes Transport Ltd, The Garage, Wellington Road, Horsehay, Telford, Shropshire, TF4 3	NEW	C3	0.65	-697
2017	W2014/0559	Woodlands Farm, Woodlands Lane, Horsehay, Telford, Shropshire, TF4 3QF	CU	Other	0.28	-2800
2017	W2016/0205	Land adjacent Lawley Bank Court, Bryce Way, Lawley, Telford, Shropshire	NEW	C2		3041
Ward Totals						0.93 -456
Ironbridge Gorge						
2017	W2011/1102	Land off, Beech Road, Madeley, Telford, Shropshire	DEM	C2	5.98	-1986
2017	W2011/1102	Land off, Beech Road, Madeley, Telford, Shropshire	NEW	C2	5.98	233.28
2017	W2011/1102	Land off, Beech Road, Madeley, Telford, Shropshire	DEM	SG	5.98	-255
2017	W2011/1102	Land off, Beech Road, Madeley, Telford, Shropshire	NEW	SG	5.98	687
2017	W2014/0140	Beeches Pool, Beech Road, Ironbridge, Telford, Shropshire, TF8 7PA	NEW	Other	0.37	60
2017	W2014/0191	15 Jockey Bank, Ironbridge, Telford, Shropshire, TF8 7PD	CU	A4	576.50	-576.5
2017	W2014/0212	The Grove Inn, Wellington Road, Coalbrookdale, Telford, Shropshire, TF8 7DX	CU	A4	0.14	-500
2017	W2014/1035	The Valley Hotel, 22 Buildwas Road, Ironbridge, Telford, Shropshire, TF8 7DW	EXT	A3	0.00	72
2017	W2014/1035	The Valley Hotel, 22 Buildwas Road, Ironbridge, Telford, Shropshire, TF8 7DW	EXT	C1	0.00	1041
2017	W2016/0297	Strethill Lodge, 10 Strethill Road, Coalbrookdale, Telford, Shropshire, TF8 7EY	EXT	C1		85.62
2017	W2016/0455	69 Bower Yard, Ironbridge, Telford, Shropshire, TF8 7JP	CU	A3		0
2017	W2016/0481	17 The Wharfage, Ironbridge, Telford, Shropshire, TF8 7AW	CU	C1		0
2017	W2016/0562	Site of Lincoln Grange Nursing Home, Lincoln Hill, Ironbridge, Telford, Shropshire	CU	C2		-34990
Ward Totals						600.93 -36128.6
Ketley and Oakengates						
2017	W2013/0291	45 Market Street Oakengates	CU	A1	0.00	-70

CU - Change of Use EXT - Extension DEM - Demolition REP - Replacement Building MOB - Mobile Unit

Year	Application No	Address	Change	Use Class	Hectares	Sq M
2017	W2013/0291	45 Market Street Oakengates	CU	A3	0.00	70
2017	W2014/1067	Former 17-19 Stafford Road, Oakengates, Telford, Shropshire, TF2 6JH	DEM	A2	0.00	-65
2017	W2015/0045	Florace, Station Fields, Oakengates, Telford, Shropshire, TF2 6DH	CU	A1	0.00	100
2017	W2015/0275	27 Market Street, Oakengates, Telford, Shropshire, TF2 6EN	CU	A3	0.00	228
2017	W2015/0275	27 Market Street, Oakengates, Telford, Shropshire, TF2 6EN	EXT	A3	0.00	60
2017	W2015/0275	27 Market Street, Oakengates, Telford, Shropshire, TF2 6EN	CU	A4	0.00	223
2017	W2015/0275	27 Market Street, Oakengates, Telford, Shropshire, TF2 6EN	CU	SG	0.00	-581
2017	W2015/0339	Castlebridge Plant, Ketley Business Park, Ketley, Telford, Shropshire, TF1 5JD	EXT	SG	0.00	108
2017	W2015/0339	Castlebridge Plant, Ketley Business Park, Ketley, Telford, Shropshire, TF1 5JD	CU	SG	0.00	1569
2017	W2016/0197	Site of The Stafford Arms, Main Road, Ketley Bank, Telford, Shropshire	CU	A4		-145
2017	W2016/0263	Ketley Community Recycling Centre (CRC), Whitchurch Drive, Telford, Shropshire, TF1 5A	CU	SG		-3000
2017	W2016/0395	Land between 29 & 33 Station Road, Ketley, Telford, Shropshire	CU	A1		-89.6

Ward Totals

0.00 -1592.6

Lawley and Overdale

2017	W2015/0053	4 & 5 Hazeldine House, Grange Central, Telford Town Centre, Telford, Shropshire, TF3 4JL	CU	A2	0.00	-214
2017	W2015/0053	4 & 5 Hazeldine House, Grange Central, Telford Town Centre, Telford, Shropshire, TF3 4JL	CU	D1	0.00	214
2017	W2016/0168	Land adjacent Buena Vista, 6 The Crest, Old Park, Telford, Shropshire	CU	SG		-4900
2017	W2016/0617	Unit 1 and Unit 2, Rampart Way, Telford Town Centre, Telford, Shropshire, TF3 4AS	RED	A1		-827
2017	W2016/0617	Unit 1 and Unit 2, Rampart Way, Telford Town Centre, Telford, Shropshire, TF3 4AS	MEZ	D2		1197
2017	W2016/0981	Land fronting Unit 1, Rampart Way, Telford Town Centre, Telford, Shropshire	NEW	A3		155

Ward Totals

0.00 -4375

Madeley

2017	W2013/0325	Lee Dingle, 48 Lees Farm Drive Madeley TF7 5SU	CU	C2	188.00	188
2017	W2013/0325	Lee Dingle, 48 Lees Farm Drive Madeley TF7 5SU	CU	C3	188.00	-188
2017	W2013/0355	Telford Ski Centre Court Road Madeley TF7 5DZ	EXT	D2	0.81	162
2017	W2014/0162	Unit 8, Madeley Industrial Estate, Station Road, Madeley, Telford, Shropshire, TF7 5EF	CU	D2	0.00	179.95

CU - Change of Use EXT - Extension DEM - Demolition REP - Replacement Building MOB - Mobile Unit

Year	Application No	Address	Change	Use Class	Hectares	Sq M
2017	W2014/0263	Unit A, Madeley Shopping Malls, High Street, Madeley, Telford, Shropshire, TF7 5BQ	CU	D1	0.00	-127.7
2017	W2014/0263	Unit A, Madeley Shopping Malls, High Street, Madeley, Telford, Shropshire, TF7 5BQ	CU	D2	0.00	127.7
2017	W2014/0357	Majestic Distribution Bitec, Tweedale North, Madeley, Telford, Shropshire, TF7 4JT	EXT	A1	0.00	50
2017	W2015/0179	4 Court Street, Madeley, Telford, Shropshire, TF7 5ED	CU	A1	0.00	-36.5
2017	W2015/0179	4 Court Street, Madeley, Telford, Shropshire, TF7 5ED	CU	A2	0.00	36.5
2017	W2016/0171	The Villa Rest Home, Park Avenue, Madeley, Telford, Shropshire, TF7 5AE	EXT	C2		559
2017	W2016/0171	The Villa Rest Home, Park Avenue, Madeley, Telford, Shropshire, TF7 5AE	DEM	C2		-118
2017	W2016/0407	Former Severn Valley Motorsport Ltd/Madeley Testing Station, Ironbridge Road, Madeley, T	DEM	SG		-472
Ward Totals					376.81	360.95
Malinslee						
2017	W2015/0817	Asda, Malinsgate, Telford Town Centre, Telford, Shropshire, TF3 4HZ	CU	A1	0.00	-15
2017	W2015/0817	Asda, Malinsgate, Telford Town Centre, Telford, Shropshire, TF3 4HZ	CU	SG	0.00	15
2017	W2017/0024	Webb House, King Street, Dawley, Telford, Shropshire, TF4 2AA	EXT	A1		25
2017	W2017/0024	Webb House, King Street, Dawley, Telford, Shropshire, TF4 2AA	EXT	D1		193
Ward Totals					0.00	218
Muxton						
2017	W2014/0846	Granville Farm, Grange Lane, Redhill, Telford, Shropshire, TF2 9PA	CU	Other	0.00	-9100
Ward Totals					0.00	-9100
Newport South						
2017	W2014/0333	Land corner of, Stafford Road/A41, Newport, Shropshire	NEW	C2	4.89	2123
Ward Totals					4.89	2123
Newport West						
2017	W2015/0324	Newport Girls High School, Wellington Road, Newport, Shropshire, TF10 7HL	EXT	D1	0.00	1056
2017	W2015/0324	Newport Girls High School, Wellington Road, Newport, Shropshire, TF10 7HL	MOB	D1	0.00	-232
Ward Totals					0.00	824

CU - Change of Use EXT - Extension DEM - Demolition REP - Replacement Building MOB - Mobile Unit

Year	Application No	Address	Change	Use Class	Hectares	Sq M
Priorslee						
2017	W2014/0980	Land between, Castle Farm Way and A5, Priorslee, Telford, Shropshire	CU	SG		-617000
Ward Totals						-617000
St. Georges						
2017	W2013/0402	Wesley House 4 Station Hill St Georges TF2 9AA	CU	SG	0.00	-554
2017	W2015/0146	Wesley House, 4 Station Hill, St Georges, Telford, TF2 9AA	CU	SG	0.00	-554
2017	W2015/1008	Former Garage, New Street, St Georges, Telford, Shropshire	DEM	SG		-1301
2017	W2016/0903	Site of Unit 1 & Unit 5 Redland Industrial Estate, Station Hill, St Georges, Telford, Shropshir	NEW	B1c		640
2017	W2016/0903	Site of Unit 1 & Unit 5 Redland Industrial Estate, Station Hill, St Georges, Telford, Shropshir	CU	SG		-2408
Ward Totals						0.00 -4177
The Nedge						
2017	W2013/0161	Unit C2 Stafford Park 4 Stafford Park	CU	A1	0.30	-459.8
2017	W2013/0739	The Nedge Tavern Nazrd Lane Nedge Hill Telford TF3 1FE	CU	A4	0.30	-600
2017	W2013/0739	The Nedge Tavern Nazrd Lane Nedge Hill Telford TF3 1FE	CU	SG	0.30	600
2017	W2013/0808	Grange Park Primary School Calcott Stichley TF3 1YQ	DEM	D1	1.31	-2188
2017	W2013/1020	Defence Support Group (DSG), Sapphire House, Stafford Park 6, Stafford Park, Telford, Sh	CU	C1	1.39	9000
2017	W2015/1041	Budgen Motors, Stafford Park 1, Stafford Park, Telford, Shropshire, TF3 3BD	EXT	SG	0.07	100
2017	W2016/0194	Premier Stores, Unit 1, Calcott, Stirchley, Telford, Shropshire, TF3 1YQ	CU	A1		-80
2017	W2016/0194	Premier Stores, Unit 1, Calcott, Stirchley, Telford, Shropshire, TF3 1YQ	CU	A3		80
Ward Totals						3.67 6452.2
Wrockwardine						
2017	W2014/0113	Former British Sugar site, Allscott, Telford, Shropshire	NEW	A1		2800
2017	W2014/0113	Former British Sugar site, Allscott, Telford, Shropshire	NEW	D1		10000
2017	W2014/0113	Former British Sugar site, Allscott, Telford, Shropshire	NEW	D2		7600
2017	W2016/0551	Highbury Villa, Drury Lane, Rodington, Telford, Shropshire, SY4 4RG	CU	C1		10
Ward Totals						20410

CU - Change of Use EXT - Extension DEM - Demolition REP - Replacement Building MOB - Mobile Unit

Year	Application No	Address	Change	Use Class	Hectares	Sq M
Wrockwardine Wood and Trench						
2017	W2014/0222	Duke of York, Trench Road, Trench, Telford, Shropshire, TF2 7DP	CU	A4	0.00	-65
2017	W2014/0222	Duke of York, Trench Road, Trench, Telford, Shropshire, TF2 7DP	CU	SG	0.00	65
2017	W2015/0572	Site of Simply The Best Valeting, Plough Road, Wrockwardine Wood, Telford, Shropshire	CU	SG		-1000
2017	W2017/0010	Trench Tots, Gibbons Road, Trench, Telford, Shropshire, TF2 7JR	DEM	D1		-193
Ward Totals					0.00	-1193
Borough Totals					1167.26	-689072

CU - Change of Use EXT - Extension DEM - Demolition REP - Replacement Building MOB - Mobile Unit