

Annual Monitoring Report 2013

Contents

2	Housing	4
2.1	Targets	4
2.2	Completions	4
2.3	Trajectory	5
2.4	Five Year Supply	6
2.5	Strategic Site Update	8
3	Economic Development	8
3.1	Employment	8
3.2	Employment Land	9
3.3	Retail and Town Centres	12
4	Community Facilities	15
5	Travel and Accessibility	15
6	Water and Flood Risk	17
7	Biodiversity	18
8	Green Space	21
9	Waste and Minerals	21
9.1	Waste	21
9.2	Minerals	22
10	Heritage	25
11	Renewable Energy and Climate Change	25
12	Development Plan Documents	27
13	Local Development Scheme	27
14	Duty to cooperate	27
15	Core Strategy	27
16	Infrastructure Delivery Planning and Community Infrastructure Levy	28
17	Central Telford Area Action Plan	29
18	Neighbourhood Planning	29
19	Appendix	30

Annual Monitoring Report 2013

1 Introduction

1.0.1 The Annual Monitoring Report shows the performance of planning policy within the Borough over the last year and if necessary recommends changes. The data used for the report comes from the financial year of 1st April 2012 - 31st March 2013 unless otherwise noted.

1.0.2 Where possible, this report sets out the data as the urban areas of Telford and Newport along with the rural area, as defined on Picture 1.1.

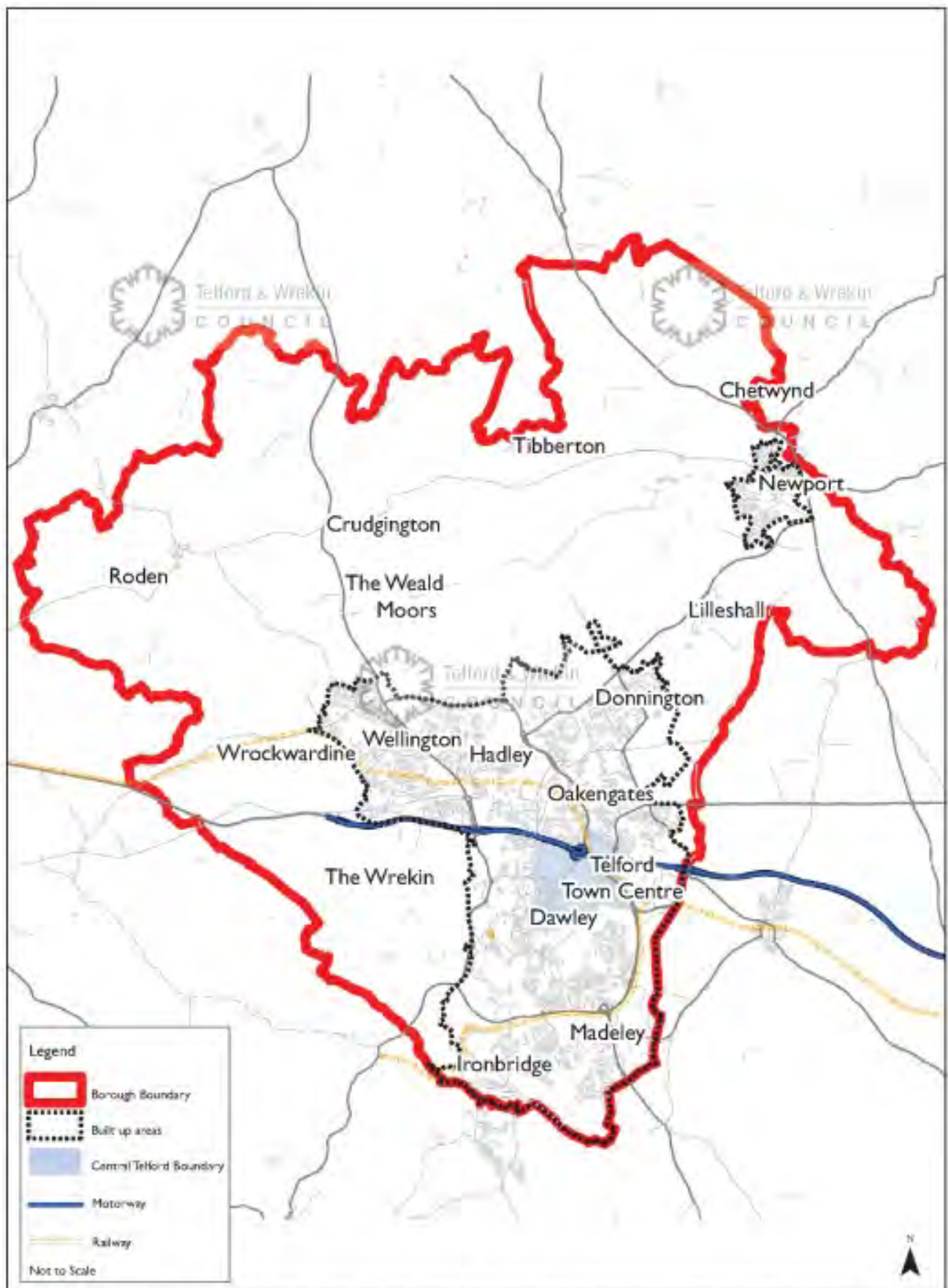
1.0.3 The Telford and Wrekin Core Strategy covers the period up to 2016. For the period beyond 2016, the Shaping Places document will include the planning policies to deliver a spatial development strategy based on a long-term spatial vision for the Borough up to 2031.

1.0.4 The Council is currently working on a new local plan under the title Shaping Places. It will contain planning policies which will manage where new homes, businesses, shops and green spaces will be located within the borough.

1.0.5 For further information on Shaping Places and planning policy for Telford & Wrekin, please see the website via the following link - http://www.telford.gov.uk/info/1004/planning_policy.

Annual Monitoring Report 2013

Picture 1.1 Map of the Borough



Reproduced from the Ordnance Survey mapping with the permission of the Controller of Her Majesty's Stationery Office © Crown copyright. Unauthorised reproduction infringes Crown copyright and may lead to prosecution or civil proceedings. Borough of Telford & Wrekin Licence No 119016544. Date: 2013
 Drawn by Richard Chery Location: r:\MAPS\AMR\2012\townboundaries.mxd

Annual Monitoring Report 2013

2 Housing

2.0.1 Within this section you will find information related to housing development and 2012/13 completions. There is also a commentary on the supply of housing land and targets for future delivery.

2.1 Targets

2.1.1 When identifying a housing supply against a housing requirement local planning authorities should use, where available, housing provision figures in adopted development plans, adjusted to reflect the level of housing that has already been delivered. The Council's Core Strategy proposed a housing requirement of 10,150 for the plan period (2006-16).

2.1.2 The Council's housing requirement set out in the Core Strategy was in part influenced by the Regional Spatial Strategy at the time and the government's New Growth Point initiative. Consequently the housing requirement set was an ambitious one, but appropriate at a time when the housing market was buoyant. Since the Core Strategy was adopted, the market has changed considerably with limitations on access to finance impacting on demand and fewer houses being built as a result.

Table 2.1 Core Strategy CS1 Targets

	2006/7	2007/8	2008/9	2009/10	2010/11	2011/12	2012/13	2013/14	2014/15	2015/16	2016/17
Rural	17	17	17	17	17	17	17	17	17	17	17
Newport	60	60	60	60	60	60	60	60	60	60	60
Telford	1253	1253	1253	1253	1253	623	623	623	623	623	623
Borough	1330	1330	1330	1330	1330	700	700	700	700	700	700

2.2 Completions

2.2.1 Table 2.2 below shows the rate of completions against the target over the Core Strategy period up to 2012/13. There has been a gradual increase in the amount of dwellings delivered particularly in the last 3 years.

Table 2.2 Housing Completions

	2006/7	2007/8	2008/9	2009/10	2010/11	2011/12	2012/13	Total	Target	Shortfall
Telford	365	246	407	468	511	622	591	3210	7511	-4301
Newport	50	61	36	3	20	82	13	265	420	-155
Rural Area	37	56	19	12	20	16	3	163	119	44
Total	452	363	462	483	551	720	607	3638	8050	-4412

2.2.2 Within 2012/2013 there has been a net addition of 607 new dwellings, this equates to 630 gross new dwellings.

Annual Monitoring Report 2013

2.2.3 Table 2.3 shows that as of March 2013 552 dwellings were under construction with a large number of these being within Telford. There were also over 8000 dwellings not started with planning permission. Steps continue to be taken to enable the delivery of these developments.

Table 2.3 Dwellings with permission (not yet completed)

	Under construction	Not started
Telford	520	7562
Newport	13	440
Rural	19	53
Borough total	552	8055

2.2.4 Table 2.4 shows the amount of affordable homes provided within the borough has continued to increase since the the start of the Core Strategy with a slight dip in the last year. However, the total overall provision of affordable housing across the borough is over 30%. These figures exclude tenure switches for example mortgage rescue.

Table 2.4 Affordable Homes Provided

	Social Rent Homes Provided	Intermediate Homes Provided	Total Affordable Homes Provided
2006/7	12	9	21
2007/8	73	0	73
2008/9	139	0	139
2009/10	170	14	184
2010/11	137	65	202
2011/12	195	80	275
2012/13	180	103	211

2.3 Trajectory

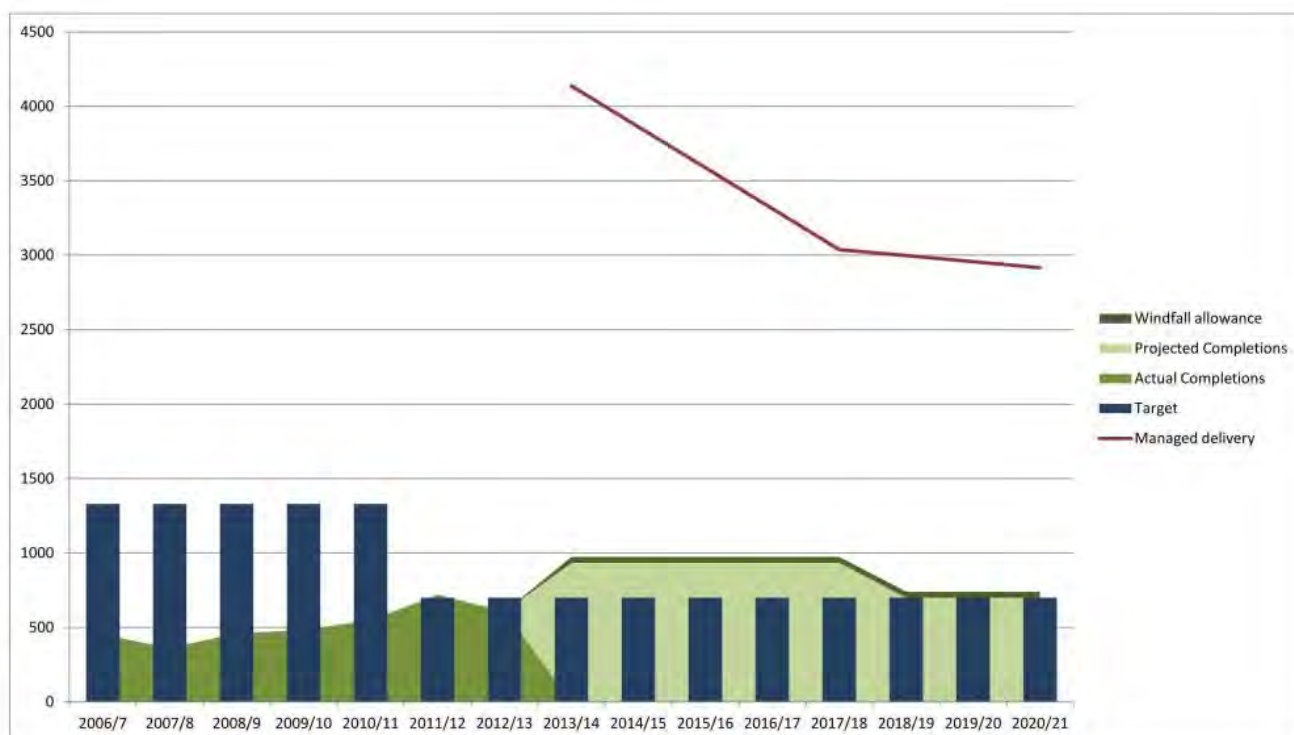
2.3.1 This section reports the latest housing trajectory and progress towards achieving housing targets set by the Core Strategy.

2.3.2 The trajectory can be used as a tool for managing housing delivery and associated infrastructure by monitoring both past and anticipated completions across a period of time. If past completions show a shortfall against requirements it will show where future completions can make this up. It also projects forward and can indicate at an early stage whether intervention measures need to be taken to ensure planned requirements are met. The trajectory also provides

Annual Monitoring Report 2013

a means of further exploring and understanding the various components of past and future housing supply, so that risks to the delivery of housing can be easily identified and mitigated against.

Figure 2.1 Housing Trajectory



2.3.3 The key measure is the remaining annual requirement, which is shown by the red Managed Delivery Target line. This represents the annual number of completions needed to meet the RSS allocation total, taking into account any shortfalls or surpluses from both previous and future years. In other words, it represents the numbers of completions needed to be on track at any point in time.

2.3.4 The completions are projected to be at a higher than target level for the next five years, at the moment this is shown to drop after the first 5 years but it is anticipated that some of the SHLAA sites may start to be delivered by then which would raise the completion levels. The managed delivery line falls steeply over the first 5 years but despite completion levels dropping the delivery line continues to reduce due to completions being higher than the target.

2.4 Five Year Supply

2.4.1 In accordance with the National Planning Policy Framework (NPPF), Telford & Wrekin Council must identify and update annually a supply of deliverable sites sufficient to provide 5 years worth of housing against its housing requirements set out in the adopted development plan, the Core Strategy (2006-2016).

2.4.2 The Council's Core Strategy proposed a housing requirement of 10,150 for the plan period (2006-16). This was in accordance with the Regional Spatial Strategy (RSS) adopted at the time, and the Department for Communities and Local Government's initiative that identified Telford as a New Growth Point that could accommodate at least 20% additional housing above the RSS figure. This translates to a 5 year target figure of 3,500 for the period 2013-2018

Annual Monitoring Report 2013

2.4.3 The economic climate has changed considerably since the housing requirement was set and therefore delivering an ambitious level of housing growth has been challenging. A consequence of this has been a number of years of under delivery against the adopted target, despite bucking the national trend in maintaining an upward trajectory in housing completions for a number of years.

2.4.4 As well as identifying land sufficient for 5 years, the NPPF requests a buffer should be in place "to ensure choice and competition in the market for land". It is suggested this buffer should be set at 5%, except for where there has been a history of persistent under delivery, then a 20% buffer should be set.

2.4.5 The current government is urging local authorities to "significantly boost housing supply". Consequently, as part of demonstrating a 5 year supply of housing, Council's are required to take account of under-delivery and accommodate any shortfall within the next 5 year period.

2.4.6 As well as accounting for under-delivery, local authorities are required to address the 'shortfall' or 'backlog' in completions to date by adding the number of homes not delivered to the adopted housing requirement. There are two ways of accommodating this shortfall. The first is the 'Liverpool method' which suggests spreading the shortfall over the plan period. The second is the 'Sedgefield method' which requires the shortfall to be made up within the first 5 years of the plan. The Sedgefield method has received support from the Planning Inspectorate in a number of recent appeal decisions as it is considered to align more closely with the requirements of the NPPF.

2.4.7 Paragraph 47 of the NPPF emphasises the importance of identifying and updating annually a supply of specific deliverable sites sufficient to meet the 5 year housing requirement identified. 'Deliverable' sites are defined in the NPPF as *available* now, offer a *suitable* location for development now, and be *achievable* with a realistic prospect that housing will be delivered on the site within five years and in particular that development on the site is viable. Sites with planning permission should be considered deliverable until permission expires, unless there is clear evidence that schemes will not be implemented within five years, for example they will not be viable, there is no longer a demand for the type of units or sites have long term phasing plans." As shown in Table 2.5 below, the Council has an expected supply of 4387 over the next 5 years.

Table 2.5 Housing supply for the next 5 years (2013-2018)

Dwellings under construction	529
Dwellings not started	4145
Windfall allowance	200
Sub total	4874
Minus 10% for non implementation ⁽¹⁾	-487
TOTAL SUPPLY	4387

1 It is assumed that not all the existing commitments will come forward as forecast, as some schemes expire before they commence on site. The 10% figure is a notional, but recognised, discount.

Annual Monitoring Report 2013

2.4.8 The full break down of sites included within the first five years are included within the five year land supply statement, available via the following link - http://www.telford.gov.uk/info/20172/planning_policy_and_strategy/123/five_year_housing_land_supply_statement.

2.4.9 It is important to note at this stage that allocations within the adopted plan (eg sites within the Central Telford Area Action Plan) and Strategic Housing Land Availability Assessment (SHLAA) sites have not been included. This may change as work is completed to test the viability of these sites and identify how many meet the NPPF tests of 'deliverability'. At the time of this report however it is anticipated that this will not bring forward sufficient sites to meet fully the requirement set out above. Therefore, in summary, with a 5 year housing target of 8,612 (which translates to 1722 homes/year) and a supply of 4,387 the Council currently has enough supply to deliver **2.5 years'** of the 5 year target figure ($4387/1722=2.5$).

2.5 Strategic Site Update

2.5.1 Within the Borough of Telford & Wrekin there are 3 Strategic Sites; Lawley Village, Lightmoor Village and Telford Millennium Community (TMC) at Ketley. This section provides a update on the progress of each development.

2.5.2 Lawley Village is Telford's largest development and has now completed residential development totalling over 550 new homes. Lawley Square, the commercial heart of the village, consisting of a supermarket, shops, offices, pub and apartments is nearing completion. Two new phases of residential are now well underway - Phases 3 & 4 off Lawley Drive delivering 434 units and Phase 6 off Dawley Road delivering 388 new homes by the consortium of major house-builders.

2.5.3 The development at Lightmoor Village has seen two sites commence construction. Keepmoat Homes are building 105 homes on land known as the Croppings whilst Crest Nicholson have started their last phase of 66 units.

2.5.4 At TMC, Taylor Wimpey are nearing completion of the second phase of 83 homes with the intention to secure planning permission for a final phase of 375 units by the end of the calendar year.

3 Economic Development

3.0.1 This section sets out the economic changes that have taken place in the borough between 1st April 2012 and 31st March 2013. The information and data set out in this section has been obtained from planning application monitoring and the council's own monthly economic profile updates⁽²⁾.

3.1 Employment

Unemployment:

3.1.1 Unemployment within the working age population (16-64) decreased by 400 people from 6,700 (8.7%) to 7,100 (8.4%) between 1st April 2012 and 31st March 2013. This unemployment level remains above the national rate (7.8%) but below the West Midlands rate (8.8%).

2 these monthly updates can be viewed via the council's website: www.telford.gov.uk

Annual Monitoring Report 2013

3.1.2 In contrast, youth unemployment (16-24 year olds) increased by 1,000 people from 2,100 (23.1%) to 3,100 (27.2%) over the same period. This is above both the national (21%) and the West Midlands (23.2%) rates.

Employment:

3.1.3 As shown in the table below, there has been an overall decrease of 1,300 people in employment over the past year. Professional occupations remain the largest grouping of employment in the borough, although this has declined by 500 employees. The largest decrease was in caring, leisure and other service occupations which saw a drop of 1,300 employees. There were increases in employment in managerial, technical, sales and customer service and elementary occupations. However these were not enough to offset the losses in other occupational groups, leading to an overall decrease of 1,300 employees in the borough in the past year.

3.1.4 The disparity between the reductions in both the employment and unemployment levels may perhaps be explained by greater numbers entering education or training.

Table 3.1 Employment levels by type

	Numbers in Employment (March 2013)	Difference from March 2012
1 Managers, directors and senior officials	7,600	+300
2 Professional occupations	13,100	-500
3 Associate professional & technical	8,400	+300
4 Administrative & secretarial	6,200	-500
5 Skilled trades occupations	8,500	-500
6 Caring, leisure and other service occupations	7,300	-1,300
7 Sales and customer service occupations	5,900	+300
8 Process plant & machine operatives	7,000	-200
9 Elementary occupations	8,700	+100
Totals:	73,300	-1,300

3.2 Employment Land

3.2.1 Telford & Wrekin continues to have a large supply and a wide variety of employment land and premises to offer for businesses and developers as shown by Table 3.2. This includes former New Town development land that remains available within established employment parks and industrial estates including Donnington Wood, Hadley Park, Halesfield, Hortonwood, and Stafford Park. Many of these larger sites are suitable for larger format industrial and warehousing units (B2 and B8 uses).

Annual Monitoring Report 2013

3.2.2 There are also opportunities for smaller scale employment developments on vacant sites or through the conversion or extension of existing buildings within or close to town centres in the borough. The most notable of these opportunities is at Telford town centre, where the Southwater development and the redevelopment of the shopping centre will deliver office developments (B1a uses) as part of wider mixture of uses, including retail, leisure and housing.

3.2.3 The figures in the following table are a summary of the amount of land available (in hectares) for new build employment development at April 2013. More detailed figures are set as set out in Appendix 6a. Please note that there is one duplicated site within this table; planning approval TWC/2012/0922 at Hadley Park (0.42 hectares) is proposed to include both B1(a) and B1(c) uses and so it has been listed twice in Appendix 6a.

Table 3.2 Employment land available by use class (hectares)

	B1(a) (Offices)	B1(b) (Research & Development)	B1(c) (Light Industry)	B2 (General Industry)	B8 (Warehousing & Distribution)	Totals:
Telford	64.8	0	0.42	48.12	61.29	174.63
Newport	0	0	0	3.05	0	3.05
Rural Area	0	0	0	0	0	0
Borough Total	64.8	0	0.42	51.17	61.29	177.68

3.2.4 This shows that Telford continues to contain the majority of the available employment land in the borough. Newport has one site that continues to remain available - a 3.05 hectare site allocated within the Wrekin Local Plan at Audley Avenue. While it appears that no land is available for new build employment development in the rural area, it is recognised that most employment development is the result of extensions, conversions and change of use of existing buildings.

3.2.5 The 177.68 hectare figure for the total amount of available employment land in the borough is almost exactly the same as the 2012 figure. This is not the result of all of last year's sites remaining undeveloped, rather it is the result of sites being removed from the supply, either through being developed or permissions expiring, and then being replaced by new approvals that total a similar site area.

3.2.6 The following table summarises the changes in employment floorspace in the borough between 1st April 2012 and 31st March 2013. All figures presented are net square metres (i.e. floorspace losses are deducted from floorspace gains).

Annual Monitoring Report 2013

Table 3.3 Employment floorspace completions (hectares)

	B1(a) (Offices)	B1(b) (Research & Development)	B1(c) (Light Industry)	B2 (General Industry)	B8 (Warehousing & Distribution)	Totals:
Telford	-217	-	-210	-3,324	1,315	-2,436
Newport	-373	-	-250	196	-1,310	-1,737
Rural Area	1,194	-	300	316	1,214	3,024
Borough Total	604	-	-160	-2,812	1,219	-1,149

3.2.7 Overall there has been a net loss of 1,149 square metres of employment floorspace. Most of these losses are due to change of use and conversions from employment to other uses. There has been one large loss of employment floorspace due to the demolition and clearance of the Doseley Pipeworks site, at -2,970 square metres this has been the most significant contributor to the large overall loss of floorspace.

3.2.8 In the rural area over 3,000 square metres has been added to the borough's employment floorspace. Two developments have made major contributions to this increase - the conversion of agricultural buildings to office units at Stockton (TWC/2012/0034; 1,194 square metres) and the development of a new haulage building near High Ercall (W2007/1586; 1,110 square metres).

Annual Monitoring Report 2013

3.3 Retail and Town Centres

3.3.1 This section examines the changes that have taken place in floorspace and development land for retail and other town centre uses. 'Town centre uses' are defined in the National Planning Policy Framework as;

- retail;
- leisure;
- entertainment facilities;
- more intensive sport and recreation uses;
- offices, and;
- arts, culture and tourism development.

3.3.2 For the purposes of monitoring, these are taken to mean developments that fall within the A1, A2, A3, A4, A5, B1(a) and D2 categories of the Use Classes Order⁽³⁾. The table below sets out the changes to floorspace (net square metres) within these town centre use classes that have occurred in the monitoring year 1st April 2012 to 31st March 2013.

Table 3.4 Changes to floorspace (net square metres) within Town Centre use classes

	A1 (Retail)	A2 (Financial & Professional)	A3 (Restaurants & Cafes)	A4 (Drinking Establishments)	A5 (Hot Food Takeaways)	B1(a) (Offices)	D2 (Assembly & Leisure)
Telford	2,478	307	644	0	148	-217	1,558
Newport	150	0	-85	0	181	-373	963
Rural Area	0	0	0	0	0	1,194	100
Borough Total	2,628	307	559	0	329	604	2,621

3.3.3 Overall, there has been a gain in floorspace for all town centre uses between April 2012 and March 2013. There have been no completed developments involving A4 uses (drinking establishments), so there has been no gain or loss of this particular use.

3.3.4 There have been losses of B1(a) office floorspace in the urban areas of the borough, however these have been more than offset by a large gain in office floorspace in the rural area. This large gain is due to the completion of one development scheme involving the conversion of agricultural buildings to offices at Stockton House Barns.

3.3.5 There have been large gains in A1 retail and D2 assembly and leisure uses in Telford. The gain in retail uses is the result of a number of different development schemes and these are discussed in further detail below. The large gain in D2 floorspace is largely due to the expansion of the Telford International Centre.

3.3.6 The following table breaks down the completed town centre uses by the different centres in the borough.

Annual Monitoring Report 2013

Table 3.5 Town Centre uses completed by Centre

	A1 (Retail)	A2 (Financial & Professional)	A3 (Restaurants & Cafes)	A4 (Drinking Establishments)	A5 (Hot Food Takeaways)	B1(a) (Offices)	D2 (Assembly & Leisure)	Total Floorspace change in Town Centre Uses
Dawley	0	0	0	0	0	-34	0	-34
Donnington	0	0	0	0	0	0	0	0
Hadley	-1000	0	0	0	0	-248	248	-1000
Madeley	-69	-47	116	0	0	0	0	0
Newport	-343	0	-85	0	181	-373	48	-572
Oakengates	0	0	0	0	0	-229	0	-229
Telford	946	120	0	0	0	-71	1859	2854
Wellington	-269	234	0	0	0	-98	0	-133
Local Centres	1154	0	662	0	133	-88	403	2264
Total within centres	419	307	693	0	314	-1141	2558	3150

3.3.7 Apart from Donnington and Madeley, all of the district centres have experienced overall losses in their town centre floorspace. The largest loss has been in Hadley, however this is the result of the demolition of the old district centre which is being replaced by new development. This will appear as a gain in forthcoming monitoring years.

3.3.8 Wellington's overall loss is due to the conversion of the upper floors of one retail unit to residential use and the conversion of an office to a non town centre use.

3.3.9 Madeley has experienced losses and gains in equal measure. This is due to the conversion of two units from one type of town centre use to another.

3.3.10 All of the centres except for Donnington and Madeley have experienced losses in office floorspace. These are all due to conversions from office to residential and other non-town centre uses. These conversions are the only changes to have taken place in Dawley and Oakengates in the past year.

3.3.11 In Newport there have been gains in assembly and leisure uses (D2) and hot food takeaways (A5), however these have not been sufficient to offset the losses in retail and office floorspace. The large loss in retail results from the conversion of three different units to restaurants and cafes (A3) and hot food takeaways (A5). Despite these being classified as town centre uses there remains an overall loss because there has been a further conversion of a separate larger unit from A3 to a non-town centre use. The loss in office floorspace was largely due to the conversion of the upper floors of a town centre building to residential use.

3.3.12 Telford town centre has experienced overall gains in town centre floorspace. As explained earlier, the large gain in D2 floorspace is the result of the expansion of the Telford International Centre. There has also been an increase in retail floorspace largely due to the completion of a new supermarket at Southwater.

Annual Monitoring Report 2013

3.3.13 Of particular note is the large gain in floorspace in the local centres. This is the result of new floorspace being completed at three local centres (Leegomery, Randlay and Woodside) that have been subject to regeneration and redevelopment in recent years and also due to the completion of new units at Lawley Square. The redevelopment schemes have displaced the floorspace losses shown in previous monitoring years.

Picture 3.1 Redeveloped Woodside Local Centre



3.3.14 Overall, the patterns of development that have taken place in the borough's centres over the past year are reflective of those being experienced throughout the UK. Generally, there have been losses in office and retail floorspace but gains in food & drink and leisure uses. As with the national picture, it appears that it is the smaller centres that have been most affected by these changes.

Annual Monitoring Report 2013

4 Community Facilities

4.0.1 This section of the Annual Monitoring Report focuses on developments that fall within the C2 (residential institutions) and D1 (non-residential institutions) categories of the use classes order. This includes facilities such as care homes hospitals, schools, health centres and clinics, children's nurseries, day centres, libraries, village halls and community centres, places of worship, galleries and museums.

4.0.2 Overall there has been a loss of just over 1,000 square metres floorspace of non-residential facilities. The largest single loss has been the demolition of the former Bridge School in Brookside. However, this loss has been more than made up for by the construction of a new 2,600 square metre, 56 bedroom care home on the same site. As a result of this single development, when C2 and D1 uses are taken together there has been an overall net gain of over 1,000 square metres between April 2012 and March 2013.

5 Travel and Accessibility

5.0.1 The third Local Transport Plan (LTP3) for Telford & Wrekin was approved in early 2011 and sets out how the Council plan to manage, maintain and develop the Borough's network over the period 2011 to 2026.

5.0.2 The six Local Transport Plan goals which will help achieve the overall vision in 2026 are:

1. Making travel more reliable and efficient, to attract jobs and support growth and regeneration.
2. Maintain highways effectively and efficiently
3. Reduce carbon emissions to help tackle climate change
4. Allow everyone to access jobs, education, healthcare, shops and leisure
5. Improve safety and security on the transport network and promote active travel choices which encourage people to be healthier
6. Improve the quality of life by reducing the visual, noise, air quality and other impacts of transport on people and the local environment.

5.0.3 The LTP3 comprises an overarching core strategy which provides the guiding principles for the management and improvement of the transport network, and a series of individual strategies that will be developed in order to tackle specific topics. Examples of individual strategies include the Rights of Way Improvement Plan, Asset Management Plan and Road Safety Strategy.

5.0.4 The Local Sustainable Transport Fund (LSTF) is a new programme launched by government in January 2011. It was established in support of the Local Transport White Paper 'Creating Growth, Cutting Carbon: Making Sustainable Local Transport Happen'. It will provide £560 million over the next 4 years for local highway authorities to deliver sustainable transport improvements in their areas which will meet the primary objectives of supporting economic growth and achieving carbon reduction.

Annual Monitoring Report 2013

Picture 5.1 Wellington Bus Station



5.0.5 Travel Telford represents an investment programme in sustainable, low carbon, low cost transport for Telford & Wrekin. The Council were successful in securing £3.5million of DfT 'Local Sustainable Transport' funding direct from Central Government. The aim of Travel Telford has been to help to reduce the impact of pollution and carbon emissions on the local environment as well as help support and stimulate economic growth across the whole Borough. Schemes included within the programme are focused on three target areas including:

- Tourism
- Business
- Schools

5.0.6 The following is a brief description of the key schemes:

- Ironbridge Park and Ride/Gorge Connect - A new Park and Ride site with access into the heart of Ironbridge.
- Improvements to cycle routes – including enhancement of the Silkin Way and the creation of a new 'cycle friendly' route between Telford/Newport/Stafford as well as targeted investments to the core cycle network.
- Telford Central Railway Station to Telford Town Centre - An improved pedestrian/cyclist route from the railway station giving improved access to major destinations including Telford Shopping Centre and Telford International Conference and Exhibition Centre.

5.0.7 The Council have also been successful in securing a large (£8.4million) LSTF funding bid for improvements to Telford Town Centre Box Road. The scheme will help enhance the town centre by creating a more pedestrian and cyclist friendly environment, helping to reduce traffic flow around the town centre and open up further development opportunities. The 'Box Road' scheme will see the replacement of a three lane highway with urban streets around three sections of the box as well as the creation of a 'shared space' street on Coach Central, helping to better link the shopping centre to the Southwater Development. Works are due to be complete by end of March 2015.

Annual Monitoring Report 2013

6 Water and Flood Risk

6.0.1 National guidance set out in the National Planning Policy Framework states inappropriate development in flood risk areas should be avoided by directing development away from areas at highest risk, but where development is necessary making it safe without increasing flood risk elsewhere. The Environment Agency report, via their website, on the applications that they object to over flood risk or water quality.

6.0.2 For Telford & Wrekin, no planning permissions were granted which were contrary to Environment Agency advice on flooding and water quality grounds.

6.0.3 As part of the evidence base for our Shaping Places Local Plan we will complete a Water Cycle Study (WCS). The study will be completed alongside the plan in order to provide evidence on water and wastewater infrastructure, and the wider water environment.

Annual Monitoring Report 2013

7 Biodiversity

7.0.1 There are 7 Sites of Special Scientific Interest in Telford & Wrekin and Natural England carries out regular Condition Monitoring on these sites to assess the percentage of SSSI's in Favourable Condition.

Table 7.1 Results of Natural England 2013 Condition Monitoring of SSSI's in Telford & Wrekin

SSSI Name	Reason for designation	% Area Meeting PSA target	% Area favourable	%Area unfavourable recovery	% Area unfavourable no change	% Area unfavourable decline	% Area destroyed/ part destroyed
Allscott settling Ponds	Series of lagoons supporting bird population of County importance	61.59	61.59		38.41		
Lincoln Hill	Geological SSSI with varied rock exposures	100		100			
Lydebrook Dingle	Narrow steep sided dingle with ancient and relatively undisturbed woodland.	100		100			
Muxton Marsh	Good example of unimproved grassland, fen and Carr remaining as a result of coal mining.	100		100			
New Hadley Brick pit	Geological SSSI of outstanding importance for interpreting the geological history of the late Carboniferous in Britain.	100		100			
Newport canal	Disused canal with assemblage of aquatic plants of value in Shropshire.					100	
The Wrekin & The Ercall	Prominent ridge of geological and biological importance. Valuable woodland supporting bird assemblage.	100	100				

7.0.2 The majority of the SSSI's in Telford & Wrekin are in favourable condition or in unfavourable recovering condition which is considered, by Natural England, to indicate that appropriate action is being undertaken to move towards favourable condition. Newport Canal remains entirely in unfavourable and declining condition.

7.0.3 Local Nature Reserves (LNR) are designated by the Local Planning Authority in partnership with Natural England, Town and Parish Councils and interested community groups. Telford & Wrekin currently has 5 designated Local Nature Reserves, as listed below, and is in the process of designating additional areas.

7.0.4 Designated Local Nature Reserves in Telford & Wrekin:

- The Ercall and Lawrence Hill LNR
- Limekiln Wood LNR

Annual Monitoring Report 2013

- Lodge Field LNR
- Telford Town Park LNR
- Granville Country Park LNR

Table 7.2 Proposed Local Nature Reserves in Telford & Wrekin

Site Name	Stage in designation process	Timescale for designation
Apley Castle pLNR	A draft management plan is being prepared for the site.	2015
The Cockshutt pLNR	A draft management plan is being prepared along with a draft boundary for consultation	2015
Dothill Park and Beanhill Valley pLNR	The site boundary is being finalised. The management plan has been agreed with Wellington Town Council. Proposed to go to cabinet in March 2014.	Summer 2014
Ironbridge Meadows & Pastures pLNR	A draft management is being prepared for this site.	2015
Lightmoor pLNR	This site has a management plan and a draft boundary is being prepared for consultation	Autumn 2014
Madebrook Pools & Stirchley Dingle pLNR	This site has been agreed by cabinet and is in the final stages of receiving the legal seal on designation	Spring 2014
Madeley Pitmounds pLNR	The management plan is in the final stages of being agreed and the internal consultation has occurred. Proposed to go to cabinet in late Spring 2014	Summer 2014
Randlay Valley pLNR	A draft management plan has been prepared for this site	2015
Wide Waters & Castle Pools pLNR	Very early stages of engagement	2016
Rough Park pLNR	Very early stages of engagement	2016

7.0.5 There are two types of Locally Designated Sites in Telford & Wrekin:

7.0.6 Local Wildlife Sites (sometimes known as County Wildlife Sites) are adopted by Shropshire Wildlife Trust in partnership with a range of organisations including Local Authorities and Natural England based on areas of land, either in private or public ownership, which represent examples of high quality habitats or which support a range of important species.

7.0.7 Local Geological Sites (formerly known as Regionally Important Geological or Geomorphological sites RIGS) are adopted by Shropshire Geological Society in partnership with a range of organisations including Local Authorities and Natural England and represent high quality examples of geological exposures and other formations.

Annual Monitoring Report 2013

7.0.8 There are 39 Local Wildlife Sites and 26 Local Geological Sites in Telford & Wrekin. The adoption of new sites is managed through the Local Sites Partnership of which Telford & Wrekin Council is a member.

7.0.9 Local Authorities are required by Defra to report the proportion of Locally Designated Sites in their area which are in 'positive management' under Single Indicator 160-00. 'Positive management' is taken in Shropshire to mean: that more than 50% of the site is in an appropriate woodland grant scheme or higher level stewardship scheme, that the site has a formal management plan, that the site has been recently visited and seen to be in good condition or that Shropshire Wildlife Trust (or Shropshire Geological Society) has visited the site and provided the owner with formal advice which is being acted upon.

Table 7.3 Proportion of Locally Designated Sites in 'positive management' in Telford & Wrekin

Type of Locally Designated Site	Number of sites in Telford & Wrekin	Number of sites in 'positive management'	Total Percentage of Local Sites in 'positive management'
Local Wildlife Sites	39	29	66 %
Local Geological Sites	26	14	

7.0.10 The percentage of Locally Designated Sites in 'positive management' is measured annually and reported to Defra. 66% of Locally Designated Sites in Telford & Wrekin are in 'positive management'. This is significantly above surrounding Counties, Shropshire Council for example reports 37% of sites in 'positive management,' and largely because Telford & Wrekin has either ownership or management control over a larger proportion of its Locally Designated Sites than most other Local Authorities. Across the whole of the VC40 ⁽⁴⁾ area, which includes Shropshire and Telford & Wrekin, the Local Sites Partnership aims for an increase of 5% annually in the number of sites which can be assessed as in 'positive management.'

4 VC40 refers to the Vice County. This is a geographical division of the British Isles, used for the purposes of biological recording.

Annual Monitoring Report 2013

8 Green Space

8.0.1 Since the start of the Core Strategy, well over three quarters of dwellings have been constructed on previously developed sites.

Table 8.1 Residential Completions by Previously Developed Land (PDL) type

		2006/7	2007/8	2008/9	2009/10	2010/11	2011/12	2012/13	2006-2013
Green Field	No.	51	65	22	50	81	184	269	722
	(%)	13	20	5	10	15	27	44	21
Previously Developed	No.	327	255	410	433	470	500	338	2,733
	(%)	87	80	95	90	85	73	56	79

9 Waste and Minerals

9.0.1 There are no minerals or waste policies in the Telford & Wrekin Council's 2007 Core Strategy, although there are minerals policies from the Joint Shropshire and Telford & Wrekin Minerals Plan (2000) that are still in place.

9.0.2 Strategic policies for waste and minerals will be incorporated in the Shaping Places Local Plan. The need for additional waste or minerals allocations in Shaping Places will be considered during the preparation of the new plan.

9.0.3 Until new policies are in place, planning applications for waste and minerals and related development will be determined based on national policies and saved policies from the Shropshire and Telford & Wrekin Joint Minerals Local Plan, alongside other relevant policies of the Core Strategy, Wrekin Local Plan, Central Telford Area Action Plan, Shropshire and Telford & Wrekin Joint Structure Plan and Supplementary Planning Documents as appropriate.

9.1 Waste

9.1.1 As can be seen from Table 9.1, there has been a significant fall in the total of waste arisings between 2012 to 2013. The majority of this reduction comes from the landfill section with much less municipal waste going to landfill. While there has also been a small reduction in recycled/composted materials, it now comprises a larger percentage of the total waste, going from 41% to 43%. There has been an increase in the amount of waste incinerated with energy recovery.

Annual Monitoring Report 2013

Table 9.1 Amount of municipal waste arising in Telford & Wrekin

	Year	Landfill	Incineration with EfW*	Incineration without EfW*	Recycled/ composted	Other	Total waste arising
Amount of waste arising in tonnes	2007	56153.8	0	0	29727.07	0	85880.87
	2008	63216.15	122.83	0	30214.81	0	93553.79
	2009	56693.18	89.83	0	31560.96	0	88343.97
	2010	54390.18	61.44	0	35064.21	0	89519.99
	2011	51520.03	58.74	0	37103.94	0	88682.71
	2012	50589.32	82.31	0	35346.84	0	86018.47
	2013	46911.2	196.63	0	35002.56	0	82110.39
* - EfW is energy from waste, for example as electricity or heating.							

9.1.2 The recycled/composted column includes the re-use figure. Since 2007 the amount of waste sent to landfill has fallen whilst the amount of waste recycled, re-used or composted has increased.

9.2 Minerals

9.2.1 Shropshire County and the borough of Telford & Wrekin are combined as a single sub region for the purpose of aggregates supply allocations. The Government requires that Mineral Planning Authorities should plan for a steady and adequate supply of aggregates. To support this planning the Council are currently working on a Local Aggregate Assessment to assess whether there is a shortage or surplus of supply and provide evidence that will be used to determine the level of provision of mineral aggregates to be made in the preparation of a new Local Plan. The Local Aggregates Assessment should be considered alongside the Annual Monitoring Report.

Primary Aggregates

9.2.2 The NPPF requires the Council to identify a landbank for 7 years for sand and gravel. The current landbank for the sub region of Shropshire and Telford & Wrekin is entirely met by sites within Shropshire since there are no currently permitted reserves within the Borough.

9.2.3 The landbank of permissions for sand and gravel working has remained consistently above the minimum target level of 7 years. The permitted landbank of permissions was equivalent to about 16.5 years production in 2011 (RAWP Annual Report 2011).

9.2.4 The latest available data indicates that the 10 year trend for sand gravel sales in Shropshire and Telford & Wrekin is 0.77mt and the 3 year trend is 0.67mt, both of which are below the current production guideline of 0.82mt. (AWP data 2001 - 2010; SC data 2011)

Annual Monitoring Report 2013

9.2.5 The market area for sand and gravel aggregates produced in Shropshire is predominately local and whilst some material is supplied into adjacent areas to the north and west, very little sand and gravel produced from Shropshire is currently exported eastwards to the main markets in the West Midlands conurbation by reason of the availability of more proximate and higher quality materials closer to these markets.

9.2.6 During 2012/13, there were no additional reserves of sand and gravel granted planning permission.

9.2.7 The NPPF requires the Council to identify a landbank for at least 10 years for crushed rock. The landbank of permissions for crushed rock working has remained consistently above the minimum target level of 10 years. The permitted landbank of permissions was equivalent to about 37 years' production in 2011 (AWP Annual Report 2011).

9.2.8 Telford & Wrekin and Shropshire is a leading producer of crushed rock in the West Midlands Region, producing about one third of the Region's total. Crushed rock is mainly used as engineering fill, roadstone and asphalt in road construction and maintenance. High specification aggregate is exported by both road and rail to a wider regional and national market area. However, sales data for crushed rock worked is confidential because there is only a single quarry producing crushed rock aggregates in Telford & Wrekin.

9.2.9 During 2012/13, there were no additional reserves of crushed rock granted planning permission.

Secondary and recycled aggregates

9.2.10 National policy requires Mineral Planning Authorities to take into account the contribution that secondary and recycled aggregates make to the supply of aggregate materials before considering extraction of primary materials.

9.2.11 Data on the production and use of secondary and recycled aggregates is limited and requires further consistent data collection from the industries involved. Figures for secondary and recycled materials used as aggregates are currently only collected sub-regionally and only limited information is available for Shropshire and Telford & Wrekin specifically: Environment Agency data suggests that about 0.38 million tonnes of inert waste was handled at waste management facilities in the two areas in 2012.

9.2.12 The arisings and use of both primary and secondary aggregates is currently in the process of being monitored as part of the new Local Aggregate Assessment regime, the findings of which will be reported in future annual monitoring reports.

Industrial Minerals

9.2.13 Brick Clay is worked within the borough at Hadley Quarry, this site supplies Blockleys Brickworks. In 2005 the site was granted planning permission to extend increasing the permitted reserves by some 2.8million tonnes. Adequate permitted reserves of brick clay exist to maintain supplies up until year 2020.

Annual Monitoring Report 2013

Energy Minerals

9.2.14 National Government has recently issued (July 2013) planning practice guidance for gas which includes coal bed methane and shale gas hydraulic fracturing. The guidance states that it is likely that the local authority would be responsible for assessing planning applications in Telford & Wrekin where planning consent would be required. Although no proposals have come forward the plan will need to include policies to deal with these types of development.

Future actions

9.2.15 Monitoring of the Shropshire and Telford & Wrekin area will need to be continued to achieve a better understanding of the separate market of the sub-region. This monitoring will enable a clearer assessment of reserve demands and supply patterns.

Annual Monitoring Report 2013

10 Heritage

10.0.1 Telford and Wrekin benefits from a rich and diverse heritage. This heritage includes the Ironbridge Gorge World Heritage Site, urban conservation areas of Newport, Wellington and Horsehay, rural conservation areas of Edgmond, High Ercall and Wrockwardine along with numerous listed buildings, locally listed buildings, monuments and archaeological features. This built heritage is important not only for its historical significance but also in terms of community identity and education. Telford and Wrekin benefits from a rich and diverse heritage.

10.0.2 Currently the main indicator for heritage is the change in size of Conservation Areas. This is shown in Table 10.1.

Table 10.1 Conservation Areas

Conservation Area	Hectares	Character Appraisal	Management Proposals
Edgmond	24.2	Yes	Yes
Newport	22.4		
Wrockwardine	26.9		
High Ercall	9.5	Yes	Yes
Wellington	8.2	Yes	Yes
Horsehay	25.1		
Severn Gorge	417.9	Yes	Yes
Borough	531.9	-	-

10.0.3 Table 10.1 also shows which of the Conservation Areas have Character Appraisals and Management Proposals. Although over 50% of the Conservation Areas (86% in terms of area) now have both in place, there has been no change within the last year. However, a character appraisal and management plan for the Wrockwardine Conservation Area are currently being worked on and are anticipated to be approved in 2015.

11 Renewable Energy and Climate Change

11.0.1 The way in which we produce our energy has significant impacts on the environment at both the local and global level. The planning system also a key role to play in helping to ensure man-made concentrations of greenhouse gases in the atmosphere are reduced.

11.0.2 Telford and Wrekin Council has a Climate Change Strategy. This sets targets to cut carbon emissions, meeting obligations under the 2008 Climate Change Act.

11.0.3 Both the government and the Council are committed to reducing the use of fossil fuels and increasing the proportion of energy used that is generated from renewable sources. Central Telford Area Action Plan (CTAAP) Policy CT14 states as a minimum, that residential development proposals of 15 dwellings or more should achieve Code for Sustainable Homes (CSH) Level 3, and non-residential development greater than 1000sqm should achieve BREEAM 'Very Good'

Annual Monitoring Report 2013

standard. Proposals in Central Telford that include non-residential uses and fall above the 1000sqm threshold should incorporate on-site renewable energy generation to meet at least 10% of the development's anticipated energy demand.

11.0.4 In 2012/13, within the Borough, there were:

- 3 applications for BREEAM
- 4 applications for Code for Sustainable Homes

11.0.5 Renewable Energy:

- 1 application for a wind turbine
- 4 applications for solar installations (PV panels, solar thermal)
- 1 application for an anaerobic digester

11.0.6 It is difficult to monitor smaller householder renewable energy generation projects. Many are permitted development under the General Permitted Development Order (GPDO) and therefore do not require planning permission and are not therefore recorded.

Annual Monitoring Report 2013

12 Development Plan Documents

12.0.1 This section discusses the documents that have been adopted and how they are performing. It also gives commentary on the documents that are under preparation.

13 Local Development Scheme

13.0.1 The Council's Local Development Scheme (LDS) is available via the following link - http://www.telford.gov.uk/info/20172/planning_policy_and_strategy/542/local_development_scheme.

14 Duty to cooperate

14.0.1 Under section 110 of the Localism Act 2011 local authorities are required to discuss, agree and provide evidence of cross-boundary issues of strategic significance (Duty to Co-operate).

14.0.2 With regards to housing this can mean accommodating unmet housing need and discussing patterns of in and out migration. Telford & Wrekin shares some of its housing market with neighbouring authorities including Shropshire, South Staffordshire, Birmingham and the Black Country and therefore officers are discussing housing matters across these authority areas to reach joint agreements. The implications of this for the Council's housing target are being assessed; it could mean, for example, that Telford & Wrekin includes in its target figure an element of housing growth that cannot be met in neighbouring areas.

14.0.3 Meetings have also taken place around a variety of issues as part of the consultation for the Strategy & Options document as well as through the run up to the consultation on the Proposed Housing and Employment sites.

15 Core Strategy

15.0.1 The Telford & Wrekin Core Strategy was adopted in 2007 and includes the planning policies covering the period up to 2016.

15.0.2 At the rear of the adopted Core Strategy there is an Implementation and Monitoring Section. Many of the indicators listed within this section are now out of date and the data is either unavailable or not monitored. Table 15.1 shows the performance of the Core Strategy against these indicators. If the indicator is on track it gets 1 point, those not showing any notable trend or the indicator is unmeasurable, get zero. Those which aren't performing, get -1. For each policy the total for all the indicators are given in Table 15.1.

15.0.3 A number of the indicators are linked to the shortfall in dwellings being delivered and this is why the scoring is low. The rate in house building within the borough has now picked up over the last few years so the scores are anticipated to get higher. Work is now under way at Southwater and as this is delivered the scores will also improve.

Table 15.1 Core Strategy Indicators Progress Summary

Policy	Title	Score
SDS	Spatial Development Strategy	3

Annual Monitoring Report 2013

Policy	Title	Score
CS1	Homes	1
CS2	Jobs	-1
CS3	Telford	-1
CS4	Central Telford	3
CS5	District and Local Centres	0
CS6	Newport	-2
CS7	Rural Area	0
CS8	Regeneration	-2
CS9	Accessibility and Social Inclusion	1
CS10	Community Facilities	1
CS11	Open Space	-1
CS12	Natural Environment and	1
CS13	Environmental Resources	
CS14	Cultural, Historic and Built Environment	0
CS15	Urban Design	0

15.0.4 The Telford and Wrekin Core Strategy covers the period up to 2016. For the period beyond 2016, the Shaping Places document will include the planning policies to deliver a spatial development strategy based on a long-term spatial vision for the Borough up to 2031.

16 Infrastructure Delivery Planning and Community Infrastructure Levy

16.0.1 A Community Infrastructure Levy (CIL) can assist the provision of infrastructure needed to deliver the development strategy for an area. A CIL includes a charging schedule relating to the infrastructure needed and requires the local planning authority to have in place an up-to-date adopted development plan to provide a strategy and proposals against which the infrastructure schedule is worked up.

16.0.2 The Council is keeping the feasibility of preparing a CIL under review. A CIL will only be prepared where its preparation is viable and feasible in the Telford & Wrekin area. If this can be shown, it would run in line with related stages of work on the Local Plan. The target date for the CIL examination would be immediately following the Local Plan examination.

Annual Monitoring Report 2013

16.0.3 In conjunction with the work which is ongoing with the Shaping Places Local Plan, the Council is also preparing an Infrastructure Delivery Plan (IDP). This will be used as an evidence base to inform the preparation of any CIL. The Council is currently consulting with infrastructure providers to help understand their requirements, as well as how the new Local Plan, along with any allocated sites, may affect infrastructure.

17 Central Telford Area Action Plan

17.0.1 As with the Core Strategy, at the rear of the Central Telford Area Action Plan there is a monitoring framework. Rather than score each policy, the document scores performance based on Vision Themes. For each theme there are several indicators. If the indicator is on track it gets 1 point or if it is negative trend it gets a -1, those not showing any notable trend or the indicator is unmeasurable, get zero. Table 17.1 shows the scores for all the indicators per vision theme.

Table 17.1 Central Telford Area Action Plan Progress

Objective	Title	Score
Vision Theme 1	A Centre with a Vibrant Heart	+6
Vision Theme 2	A Distinctive Sense of Place	-1
Vision Theme 3	A Place for Living	0
Vision Theme 4	A Centre with a Thriving Economy	-2
Vision Theme 5	An Accessible and Connected Centre	0
Vision Theme 6	A Centre with Low Environmental Footprint	0
Vision Theme 7	A Green Community	2

17.0.2 Work is now underway at the Southwater development with the first phases of completions anticipated within the next monitoring year. This will mean the scoring will improve as the vision themes are delivered.

18 Neighbourhood Planning

18.0.1 Town and Parish Councils (or Neighbourhood Fora in other areas without parishes) can now prepare Neighbourhood Development Plans and Neighbourhood Development Orders. A Neighbourhood Development Plan can enable communities to establish general planning policies for development and use of land in their area. It can be detailed, or general, depending on what local people want and will form part of the Development Plan. To be put in place a plan needs to pass a number of tests; it must conform to national planning policies and the strategic policies of Telford & Wrekin (T&W) Council.

18.0.2 Waters Upton Parish, Ercall Magna Parish, Madeley Town Council and Newport Town Council are preparing Neighbourhood Development Plans for their respective areas as local "Frontrunner" pilots for Neighbourhood Planning. At this stage, no Neighbourhood Development Orders are proposed in Telford & Wrekin. However Madeley Town Council officially submitted the Madeley Neighbourhood Development Plan in February 2014.

Annual Monitoring Report 2013

18.0.3 In October 2013, Stirchley & Brookside Parish Council applied to designate the Parish area of Stirchley & Brookside as a neighbourhood area outside of the Frontrunner scheme and were designated in January 2014.

18.0.4 In accordance with the Localism Act (2011) and Neighbourhood Planning (General) Regulations 2012 the Parishes preparing these plans, rather than Telford & Wrekin Council, although T&W Council can offer advice. Telford & Wrekin Council also has to co-ordinate a referendum on the final plan and will therefore need to consider the resource implications.

18.0.5 Further details of progress of the Neighbourhood Development Plans under preparation in Telford & Wrekin will be provided on the Council's website www.telford.gov.uk/neighbourhoodplanning and on the relevant Parishes own websites.

19 Appendix

19.0.1 Attached below are the appendices which shows the raw data which has been collected. Please note that more recent planning applications with the TWC prefix are reverted back to W prefix. For example TWC/2013/0001 becomes W2013/0001.

Appendix 1 - Residential Plots Completed in 2012/13

Ward Name

	Application No	Address	Previous Use	Hectares	Completed
<i>Apley Castle</i>					
	W2010/0011	Former Watkins Nursery, Apley Castle, Leegomery, Telford, Shropshire.	FE	0.73	12
<i>Arleston</i>					
	W2007/0535	Site B, Limekiln Lane, Wellington	FE	3.70	22
	W2010/0545	Church Walk, Wellington, Telford, Shropshire. TF1 1RW	GR	0.19	1
<i>Church Aston and Lilleshall</i>					
	W2009/0288	Land to rear of, 15A, The Humbers, Donnington, Telford, Shropshire.	FR	0.21	1
	W2009/1057	Land at rear of, Sunners Newsagents, The Humbers, Donnington, Telford, Shropshire.	FR	0.07	2
	W2010/0099	42, Limekiln Lane, Lilleshall, Shropshire.	FR	0.00	1
	W2010/0099	42, Limekiln Lane, Lilleshall, Shropshire.	FR	0.00	-1
	W2010/0815	Church Aston Manor, Church Aston, Newport, TF10 9JJ	OB	0.00	1
	W2011/0269	Moor Farm, Kynnersley Drive, Lilleshall, Newport, Shropshire, TF10 9HT	OB	0.00	1
	W2012/0289	Land adjacent Magnolia Cottage, Humber Lane, Donnington, Telford, Shropshire, TF2 8LP	OB	0.00	1
<i>Cuckoo Oak</i>					
	W2012/0336	6 Stretton Close, Sutton Hill, Telford, Shropshire, TF7 4LS	OB	0.00	1
<i>Dawley Magna</i>					
	W2012/0782	9-10 Burton Street, Dawley, Telford, Shropshire, TF4 2ES	OB	0.00	1
<i>Donnington</i>					
	W2006/0068	LAND AT, STATION ROAD, TELFORD	FE	6.40	24
	W2012/0427	The Haven, St. Georges Road, Donnington, TF2 7NJ	GR	0.00	1

FR - Former Residential FE - Former Employment OB - Other Brownfield GR - Greenfield

Ward Name

	Application No	Address	Previous Use	Hectares	Completed
Edgmond	W2012/0427	The Haven, St. Georges Road, Donnington, TF2 7NJ	GR	0.00	-1
	W2010/0491	Land adjacent to, 24 Newport Road, Edgmond, Newpor	GR	0.00	1
	W2012/0661	Land adjacent 24 Newport Road, Edgmond, Newport, Shropshire, TF10 8HQ	GR	0.00	1
Ercall Magna	W2010/0423	1 Ellerdine, Telford, Shropshire, TF6 6RP	OB	0.00	-1
	W2010/0423	1 Ellerdine, Telford, Shropshire, TF6 6RP	OB	0.00	1
	W2012/0749	Church Farm, Rowton, Telford, Shropshire, TF6 6QY	OB	0.00	2
	W2012/0749	Church Farm, Rowton, Telford, Shropshire, TF6 6QY	OB	0.00	-1
Hadley and Leegomery	W2007/1161	Land at, Britannia Way, Hadley	FE	3.00	26
	W2011/0953	Gladstone House, Hadley, Telford, Shropshire, TF1 5NF	FR	0.00	-11
Haygate	W2010/0551	2 Market Street, Wellington, Telford, Shropshire,	OB	0.00	3
Horsehay and Lightmoor	W2007/0145	Land at, Lawley Farm, Lawley	FE	4.10	2
	W2010/0817	Lawley Farm, Dawley Road, Lawley, Telford,	GR	0.00	1
	W2011/0093	Lawley Farm, Dawley Road, Lawley, Telford, Shropshire.	GR	0.00	23
	W2011/0851	Lawley Farm, Dawley Road, Lawley, Telford	GR	0.36	1
	W2010/0041	22 Little Green Avenue, Lightmoor, Telford, Shrops	OB	0.00	3
	W2010/0620	Doseley Works, Doseley, Telford, Shropshire, TF4 3	OB	0.00	35

FR - Former Residential FE - Former Employment OB - Other Brownfield GR - Greenfield

Ward Name

	Application No	Address	Previous Use	Hectares	Completed
	W2007/0948	Land off, Dawley Road, Lawley	OB	7.10	15
<i>Ketley and Oakengates</i>					
	W2010/0200	Capewell Works, Sommerfield Road, Trench Lock, Tel	FE	0.00	48
	W2010/0763	17 Holyhead Road, Ketley, Telford, Shropshire, TF1 5DY	FR	0.00	6
	W2011/0852	Capewell Works, Sommerfield Road, Trench Lock, Telford, Shropshire,	GR	0.00	11
	W2010/0147	Ketley Filling Station, Holyhead Road, Ketley, Telford, Shropshire	GR	0.00	36
	W2011/1056	Former Ketley Filling Station, Holyhead Road, Ketley, Telford, Shropshire,	GR	0.00	2
	W2011/0884	Walker Institute, Hartsbridge Road, Oakengates, Telford, Shropshire, TF2 6BA	OB	0.00	14
	W2010/0521	Telford Millennium Community, Ketley, Telford, Shropshire,	OB	0.00	40
<i>Lawley and Overdale</i>					
	W2010/0627	Ironstone Square, Lawley	GR	3.44	16
	W2011/0488	Phases 3 & 4 Lawley Village, Lawley Drive, Lawley, Telford,	GR	0.00	88
<i>Madeley</i>					
	W2010/0594	Land at 8 Queen Street, Madeley, Telford, Shropshi	FE	0.00	6
	W2011/1020	The Pheasant Inn, 14 Coalport Road, Madeley, Telford, Shropshire, TF7 5DP	OB	0.00	2
	W2009/0821	19, Russell Road, Madeley, Telford, Shropshire.	OB	0.08	2
	W2010/0777	29 Park Street, Madeley, Telford. Shropshire. TF7	OB	0.00	8
<i>Malinslee</i>					
	W2012/0350	Land rear of 17 Bank Road, Dawley Bank, Telford, Shropshire, TF4 2AZ	FR	0.00	1
	W2011/0017	Land at Prince Edward Crescent, Malinslee, Telford, Shropshire, TF3 2JU	GR	0.00	12
	W2012/0612	Cortina, Old Office Road, Dawley, Telford, Shropshire, TF4 2LF	GR	0.00	1

FR - Former Residential FE - Former Employment OB - Other Brownfield GR - Greenfield

Ward Name

	Application No	Address	Previous Use	Hectares	Completed
<i>Muxton</i>					
	W2012/0371	Muxton C2, C3, Marshbrook Way, Muxton, Telford, Shropshire,	GR	0.00	5
	W2012/0357	Land adjacent to, 76 Laneside, Muxton, Telford, Shropshire, TF2 8PE	GR	0.00	1
	W2009/0542	Muxton C2/C3, Marshbrook Way, Muxton, Telford, Shropshire.	GR	5.99	21
	W2010/0199	Land At, Ambleside Way, Donnington Wood, Telford, Shropshire	OB	0.20	2
<i>Newport East</i>					
	W2011/0339	Mount Pleasant, land adjoining, 2 Tan Bank, Newport, Shropshire, TF10 7LJ	GR	0.00	2
<i>Newport South</i>					
	W2010/0757	Audley Villa, 40 Audley Avenue, Newport, Shropshire	FR	0.00	1
	W2010/0820	Land off Queens Drive, Newport, Shropshire, TF10 7EU	GR	0.00	2
<i>Newport West</i>					
	W2011/0198	77 High Street, Newport, Shropshire, TF10 7AU	OB	0.00	6
	W2012/0035	16 & 17 Water Lane, Newport, Shropshire, TF10 7AB	OB	0.00	2
<i>Priorslee</i>					
	W2011/0835	Phases 2 & 9, Redhill Clay Pit, Redhill Way, St Georges, Telford, Shropshire,	GR	0.00	25
	W2010/0731	Redhill Clay Pit, Redhill Way, St Georges, Shropshire,	OB	0.00	28
	W2010/0638	Pigeon Box Inn, Priorslee Road, St Georges, Telford	OB	0.00	13
<i>St. Georges</i>					
	W2009/0723	The Beehive, New Road, Wrockwardine Wood, Telford, Shropshire.	FE	0.02	2
<i>The Nedge</i>					
	W2010/0082	Stirchley Grange, Stirchley Village, Stirchley, Telford, Shropshire.	FR	0.00	5
	W2009/0326	Randlay Centre, Randlay Community Centre, Randlay, Telford, Shropshire.	OB	1.41	6

FR - Former Residential FE - Former Employment OB - Other Brownfield GR - Greenfield

Ward Name

	Application No	Address	Previous Use	Hectares	Completed
Woodside					
	W2011/0397	Land off, Park Lane, Woodside, Telford, Shropshire,	GR	0.00	21
Wrockwardine					
	W2010/0114	Mayfield House, Arleston Brook, Arleston, Telford, Shropshire.	FR	0.00	1
	W2011/0472	1-8 Turreff Bungalows, Wrockwardine, Shropshire, TF6 5DF	GR	0.00	6
	W2011/0473	1-8 Turreff Bungalows, Wrockwardine, Shropshire, TF6 5DF	GR	0.00	-8
	W2012/0384	5 Marsh Green, Telford, Shropshire, TF6 6NE	OB	0.00	1
	W2006/1005	PHASE 1A, LAWLEY, TELFORD	OB	7.23	4
TOTALS				44.23	607

FR - Former Residential FE - Former Employment OB - Other Brownfield GR - Greenfield

Appendix 2 - Residential Sites Under Construction and Plots Started 2012/13

Ward Name	Application	Address	Previous Use	Ha	Total Comp	Comp 2012	Not Started	Started
FULL GRANTED								
<i>Apley Castle</i>								
	W2010/0011	Former Watkins Nursery, Apley Castle, Leegomery, Telford, Shropshire.	FE	0.73	12	12	0	6
<i>Arleston</i>								
	W2007/0535	Site B, Limekiln Lane, Wellington	FE	3.70	102	22	36	11
	W2012/0487	Land adjacent, 55 Manor Rise, Arleston, Telford, Shropshire,	FR	0.00	0	0	0	1
	W2010/0545	Church Walk, Wellington, Telford, Shropshire. TF1 1RW	GR	0.19	1	1	3	0
<i>Church Aston and Lilleshall</i>								
	W2012/0448	Land to rear of, 14 & 14a Humber Lane, Donnington, Telford, Shropshire,	GR	0.00	0	0	0	1
	W2013/0063	Hill Farm, Church Road, Lilleshall, Shropshire, TF10 9HE	OB	0.00	0	0	0	1
<i>College</i>								
	W2007/0667	Telford Islamic Centre, 88, King Street, Wellington	OB	0.20	0	0	0	1
	W2008/0227	Land at, Urban Gardens, Wellington, Telford, Shropshire.	OB	0.06	0	0	0	3
	W2011/0452	11 Church Street, Wellington, Telford, Shropshire, TF1 1DD	OB	0.00	0	0	0	10
<i>Cuckoo Oak</i>								
	W2012/0535	Land adjacent to, 14 Cuckoo Oak Green, Telford, Shropshire, TF7 4HT	GR	0.00	0	0	0	2
<i>Dawley Magna</i>								
	W2012/0846	Station Inn, Station Road, Dawley, Telford, Shropshire, TF4 2NJ	OB	0.00	0	0	0	1
<i>Donnington</i>								
	W2011/0633	Land to the Rear of the Former Bell Inn PH, The Fields, Donnington Wood, Telford, Shropshir	GR	0.00	0	0	0	1
	W2011/0677	Land at junction of Ash Lea Rd and Bradley Road, Telford, TF2 7RG	GR	0.00	0	0	0	5
	W2012/0027	Land adjacent 18, Hayward Avenue, Donnington, Telford, Shropshire,	GR	0.00	0	0	0	4
<i>Ercall</i>								
	W2007/0748	15, Ercall Gardens, Wellington	FR	0.04	0	0	0	1
	W2012/0303	Land at 349 Holyhead Road, Wellington, Telford, Shropshire, TF1 2EZ	GR	0.00	0	0	0	1

FR - Former Residential

FE - Former Employment

OB - Other Brownfield

GR - Greenfield

Ward Name	Application	Address	Previous Use	Ha	Total Comp	Comp 2012	Not Started	Started
Ercall Magna								
	W2007/0986	22, Waters Upton	FR	0.10	-1	0	1	0
Hadley and Leegomery								
	W2009/0546	5, Castle Street, Hadley, Telford, Shropshire.	GR	0.02	0	0	0	2
	W2012/0574	Land adjacent 16 Ripley Close, Leegomery, Telford, Shropshire, TF1 6YY	GR	0.00	0	0	0	2
	W2004/0879	THE OLD POST OFFICE, 27, HIGH STREET, Hadley	OB	0.10	0	0	0	3
Haygate								
	W2008/0387	11, Church Street, Wellington, Telford, Shropshire.	FE	0.07	0	0	0	14
	W2010/0402	Flora Dugdale House, 27 Wrockwardine Road, Welling	FE	0.13	0	0	0	1
Horsehay and Lightmoor								
	W2009/0308	Land adjacent to, 34, Wellington Road, Horsehay, Telford, Shropshire.	FR	0.09	0	0	0	1
	W2012/0347	Falcons Rest, Former Doseley Works, Doseley, Telford, Shropshire,	FR	0.00	0	0	0	1
	W2010/0620	Doseley Works, Doseley, Telford, Shropshire, TF4 3	OB	0.00	8	35	0	15
Ironbridge Gorge								
	W2007/1581	Land adjoining Brewery Cottage, High Street, Coalport	FR	0.02	0	0	0	1
Ketley and Oakengates								
	W2007/1651	Land adjacent to, 62, Hartshill, Oakengates	FR	0.10	0	0	0	1
	W2011/1037	The Walker Institute, Hartsbridge Road, Oakengates, Telford, Shropshire, TF2 6BA	GR	0.00		0	0	14
	W2011/0019	Land adjacent to Coronation Bungalow, Station Fields, Oakengates, Telford, Shropshire, TF2	GR	0.00	0	0	0	1
	W2006/0663	LAND ADJACENT TO HOMELANDS CARAVAN PARK, MOSSEY GREEN, TELFORD	OB	0.30	0	0	0	12
	W2009/0215	3, Holyhead Road, Oakengates, Telford, Shropshire.	OB	0.07	0	0	0	3
Lawley and Overdale								
	W2011/0557	Land adjacent 16 Mannerley Lane, The Rock, Telford, Shropshire, TF3 5AX	GR	0.00	0	0	0	2
	W2006/0818	Land adjacent, 3, Station Road, Lawley Bank	OB	0.20	0	0	0	1
Madeley								
	W2008/1310	30, Park Street, Madeley, Telford, Shropshire.	OB	0.04	0	0	0	3
Malinslee								
	W2008/0302	Land at the junction of, King Street, Dawley, Telford, Shropshire.	OB	0.10	0	0	8	2

FR - Former Residential

FE - Former Employment

OB - Other Brownfield

GR - Greenfield

Ward Name	Application	Address	Previous Use	Ha	Total Comp	Comp 2012	Not Started	Started
Muxton								
	W2004/0457	FERNLEIGH BUNGALOW, THE FIELDS, DONNINGTON, TELFORD, SHROPSHIRE.	FR	0.06	0	0	0	1
	W2010/0199	Land At, Ambleside Way, Donnington Wood, Telford, Shropshire	OB	0.20	3	2	0	2
Newport East								
	W2011/0874	48 Stafford Road , Newport, Shropshire, TF10 7NA	FE	0.00	0	0	0	3
	W2012/0211	Land To The Rear Of, Maynards Croft, Newport, Shropshire, TF10 7SZ	GR	0.00	0	0	34	0
Newport North								
	W2003/0872	Land rear of, Forton Road Motor Sales, Forton Road	FR	0.40	0	0	0	6
	W2011/0653	91 Masons Place, Newport, Shropshire, TF10 7JT	GR	0.00	0	0	0	1
Newport South								
	W2011/0334	Former Newport Business Park, Audley Road, Newport, Shropshire, TF10 7DP	FE	0.00	0	0	61	0
	W2012/0180	Land off, Upper Bar, Newport, Shropshire, TF10 7EJ	GR	0.00	0	0	0	3
Park								
	W2011/0245	69 Admaston Road, Wellington, Telford, Shropshire TF1 3NL	GR	0.00	0	0	0	5
The Nedge								
	W2010/0082	Stirchley Grange, Stirchley Village, Stirchley, Telford, Shropshire.	FR	0.00	9	5	0	2
Woodside								
	W2009/0051	Land at, Park Lane, Woodside, Telford, Shropshire.	OB	4.23	32	0	134	20
Wrockwardine								
	W2009/0490	Longden Mill Farmhouse, Longdon-On-Tern, Shropshire.	FR	0.21	0	0	0	1
	W2010/0622	Aston Hall Farm, Aston Hall, Aston, Telford, Shropshire, TF6 5AQ	FR	0.00	0	0	0	1
	W2011/1042	39 Coalmoor Lane, Coalmoor, Telford, Shropshire, TF4 3QB	GR	0.00	0	0	0	1
	W2009/0780	Farm Buildings, Aston Hall Farm, Aston, Shropshire.	GR	0.65	0	0	0	8
	W2012/0508	Land to the rear of Orchard House, Bratton Road, Admaston, Telford, Shropshire, TF5 0AQ	GR	0.00	0	0	0	1
	W2012/0063	Land adjacent to, 26 Burnell Road, Admaston, Telford, Shropshire, TF5 0BQ	GR	0.00	0	0	0	1
	W2011/0279	Huntsman Inn, Wellington Road, Little Wenlock, Shropshire TF6 5BH	GR	0.00	0	0	0	3
	W2011/1058	Land off, Dalefield Drive, Admaston, Telford, Shropshire, TF5 0DP	GR	0.00	0	0	0	6
	W2009/0491	Longden Mill Farm Barns, Longdon-On-Tern, Shropshire.	GR	0.21	0	0	0	4

FR - Former Residential FE - Former Employment OB - Other Brownfield GR - Greenfield

Ward Name	Application	Address	Previous Use	Ha	Total Comp	Comp 2012	Not Started	Started
					166	77	277	197
LISTED BUILDING GRANTED								
Apley Castle								
	W2010/0414	Watkins Nursery And Garden Cen, Apley Castle, Apley	OB	0.00	0	0	0	3
					0	0	0	3
OUTLINE GRANTED								
Horsehay and Lightmoor								
	W2002/0392	Land at Lightmoor, Telford	OB	79.20	0	0	395	0
Lawley and Overdale								
	W2004/0980	LAND AT, LAWLEY, The Rock	GR	157.50	0	0	2812	0
					0	0	3207	0
RESERVE MATTERS GRANTED								
Church Aston and Lilleshall								
	W2009/0288	Land to rear of, 15A, The Humbers, Donnington, Telford, Shropshire.	FR	0.21	1	1	0	2
Horsehay and Lightmoor								
	W2007/0145	Land at, Lawley Farm, Lawley	FE	4.10	62	2	0	2
	W2011/0851	Lawley Farm, Dawley Road, Lawley, Telford	GR	0.36	1	1	0	16
	W2009/0716	Land at Lightmoor Way, Lightmoor, Telford Telford.	GR	0.66	34	0	2	0
	W2007/0948	Land off, Dawley Road, Lawley	OB	7.10	217	15	0	1
Muxton								
	W2009/0542	Muxton C2/C3, Marshbrook Way, Muxton, Telford, Shropshire.	GR	5.99	79	21	20	8
					394	40	22	29
RESERVED MATTERS GRANTED								
Brookside								
	W2012/0714	Former Brindleyford School, Brindleyford, Brookside, Telford, Shropshire.	OB	1.30	0	0	34	18
Dawley Magna								
	W2011/0256	Dulce Domum, Land adjacent, Heath Hill, Dawley, Telford, Shropshire,	FR	0.00	0	0	1	0
	FR - Former Residential	FE - Former Employment	OB - Other Brownfield	GR - Greenfield				

Ward Name	Application	Address	Previous Use	Ha	Total Comp	Comp 2012	Not Started	Started
	W2011/0257	Dulce Domum, Land adjacent, Heath Hill, Dawley, Telford, Shropshire,	GR	0.00	0	0	0	1
Horsehay and Lightmoor								
	W2011/0093	Lawley Farm, Dawley Road, Lawley, Telford, Shropshire.	GR	0.00	0	23	15	5
	W2010/0817	Lawley Farm, Dawley Road, Lawley, Telford,	GR	0.00	7	1	1	0
	W2012/0419	Lawley Phase 6, Dawley Road, Lawley , Telford, Shropshire.	GR	0.00	0	0	370	18
	W2011/0500	Phase 1, The Croppings, Lightmoor, Telford, Shropshire,	GR	0.00	0	0	87	18
Ketley and Oakengates								
	W2010/0200	Capewell Works, Sommerfield Road, Trench Lock, Tel	FE	0.00	38	86	113	21
	W2011/0852	Capewell Works, Sommerfield Road, Trench Lock, Telford, Shropshire,	GR	0.00	11	11	2	1
	W2010/0521	Telford Millennium Community, Ketley, Telford, Shropshire,	OB	0.00	64	40	1	18
Lawley and Overdale								
	W2011/0800	Lawley Square, Newdale Valley, Lawley, Telford, Shropshire	GR	3.50	0	0	0	32
	W2011/0488	Phases 3 & 4 Lawley Village, Lawley Drive, Lawley, Telford,	GR	0.00	88	88	308	39
	W2010/0627	Ironstone Square, Lawley	GR	3.44	16	16	0	23
	W2011/1090	Ironstone Square, Lawley, Telford, Shropshire	GR	0.00	0	0	0	60
Muxton								
	W2012/0709	C3, C2, Marshbrook Way, Muxton, Telford, Shropshire,	GR	0.00	0	0	20	7
	W2012/0371	Muxton C2, C3, Marshbrook Way, Muxton, Telford, Shropshire,	GR	0.00	5	5	2	1
	W2012/0408	Land off Meadow Road, Marshbrook Way, Muxton, Telford, Shropshire,	GR	0.00	0	0	0	12
Newport East								
	W2012/0479	48 Stafford Road, Newport, Shropshire, TF10 7NA	FE	0.00	0	0	0	1
Newport South								
	W2011/0285	Land Off Upper Bar, Newport, Shropshire TF10 7EJ	FE	0.00	0	0	0	6
Priorslee								
	W2011/0835	Phases 2 & 9, Redhill Clay Pit, Redhill Way, St Georges, Telford, Shropshire,	GR	0.00	25	25	0	34
	W2012/0587	Redhill Clay Pit, Redhill Way, St Georges, Telford, Shropshire,	OB	0.00	0	0	103	5
	W2010/0731	Redhill Clay Pit, Redhill Way, St Georges, Shropshire,	OB	0.00	47	28	0	3
					301	323	1057	323

FR - Former Residential

FE - Former Employment

OB - Other Brownfield

GR - Greenfield

Ward Name	Application	Address	Previous Use	Ha	Total Comp	Comp 2012	Not Started	Started
TOTALS				275.59	861	440	4,563	552

FR - Former Residential

FE - Former Employment

OB - Other Brownfield

GR - Greenfield

Appendix 3 - Residential Sites with Plots Not Started 2012/13

Ward Name	Application No	Address	Previous Use	Hectares	Not Started
CERTIFICATE OF ALTERNATIVE APP					
Woodside					
	W2010/0629	Land adjoining, 156a, 156b Wildwood, Woodside, Tel	OB	0.00	1
Borough				0	1
DEMOLITION DETERMINATION PERM					
Muxton					
	W2012/0032	Westwinds, Old Willow Road & Flats 1 & 2, Merevale Way, Breton Park, Muxton, Telford, Sh	GR	0.00	-3
Borough				0	-3

FR - Former Residential FE - Former Employment OB - Other Brownfield GR - Greenfield

Ward Name	Application No	Address	Previous Use	Hectares	Not Started
FULL GRANTED					
<i>Apley Castle</i>					
	W2006/1347	LAND OFF, POOL FARM AVENUE, Leegomery	FE	1.30	71
	W2012/0453	8 Greenfinch Close, Apley, Telford, Shropshire, TF1 6FY	GR	0.00	1
<i>Arleston</i>					
	W2010/0545	Church Walk, Wellington, Telford, Shropshire. TF1 1RW	GR	0.19	3
	W2010/0359	Land off, Mount Gilbert, Wellington, Telford, Shro	OB	3.71	16
	W2007/0535	Site B, Limekiln Lane, Wellington	FE	3.70	36
	W2010/0775	160 Holyhead Road, Wellington, Telford, Shropshire	GR	0.00	1
	W2012/0093	Electricity Sub Station Site, Arleston Lane, Arleston, Telford, Shropshire,	GR	0.00	1
	W2012/0432	11 Dawley Road, Arleston, Telford, Shropshire, TF1 2HW	OB	0.00	2
<i>Church Aston and Lilleshall</i>					
	W2008/0702	Village Farm, Preston, Shropshire	GR	0.09	1
	W2010/0413	Hoo Hall, The Hoo, Preston, Telford, Shropshire, T	OB	0.00	2
	W2013/0074	Green Bank, Pitchcroft Lane, Woodcote, Newport, Shropshire, TF10 9AU	FR	0.00	1
<i>College</i>					
	W2010/0048	41, Park Street, Wellington, Telford, Shropshire.	FE	0.00	5
	W2010/0097	27-31 High Street, Wellington, Telford, Shropshire	OB	0.00	12
<i>Cuckoo Oak</i>					
	W2012/0537	29 Solway Drive, Sutton Hill, Telford, Shropshire, TF7 4JA	FR	0.00	1
	W2012/0887	Site A, B, C, D & E, Sutton Hill Local Centre, Sutton Hill, Telford, Shropshire	GR	0.00	49
<i>Dawley Magna</i>					
	W2010/0235	The Lord Hill Inn, High Street, Dawley, Telford, S	OB	0.01	1
	W2011/0041	3 Southall Road, Dawley, Telford, Shropshire, TF4 3NE	OB	0.00	1
	W2011/0170	The White Horse Inn, Heath Hill, Dawley, Telford, Shropshire, TF4 2JU	OB	0.00	14
	W2011/0408	The Bungalow, Rednal Fields, Dawley, Telford, Shropshire, TF4 3HQ	FR	0.00	2

FR - Former Residential FE - Former Employment OB - Other Brownfield GR - Greenfield

Ward Name	Application No	Address	Previous Use	Hectares	Not Started
	W2012/0280	Land adjacent, 23 Heath Hill, Dawley, Telford, Shropshire,	GR	0.00	1
	W2012/0784	16 Holly Road, Little Dawley, Telford, Shropshire, TF4 3HB	OB	0.00	0
	W2013/0017	Unit 5, Holland Court, High Street, Dawley, Telford, Shropshire, TF4 2EX	FE	0.00	1
Donnington					
	W2011/0803	72, 72B Furnace Lane, Trench, Telford, Shropshire, TF2 7JE	OB	0.00	1
	W2011/0942	Land formally 11, Queens Road, Donnington, Telford, Shropshire, TF2 8DB	GR	0.00	1
	W2012/0416	Land Adjacent To, 12 Jubilee Avenue, Donnington, Telford, Shropshire, TF2 8HN	GR	0.00	2
Edgmond					
	W2010/0688	Land Adjacent to, 53 Maslan Crescent, Tibberton, Shropshire, TF10 8PB	GR	0.00	1
	W2009/1108	Adeney Manor Farm, Adeney, Shropshire.	OB	0.48	5
	W2011/0015	Tibberton Stores, Tibberton, Telford, Shropshire, TF10 8NZ	OB	0.00	1
Ercall					
	W2010/0220	Birtley House, 285 Holyhead Road, Wellington, Telf	OB	0.00	1
	W2010/0458	62 Wrekin Road, Wellington, Shropshire, TF1 1RN	OB	0.00	12
	W2010/0089	Highfield House, 47 Wrekin Road, Wellington, Telford	FE	0.00	13
Ercall Magna					
	W2013/0036	Brookwood, Crudgington Green, Crudgington, Shropshire, TF6 6JY	OB	0.00	1
	W2011/0923	Lower House Farm, Waters Upton, Telford, Shropshire, TF6 6PB	GR	0.00	2
	W2010/0076	Eyton Hall, Eyton, Shropshire.	GR		1
	W2009/0895	Outbuildings at, Meeson Hall, Meeson, Shropshire.	GR	0.12	6
	W2007/0986	22, Waters Upton	FR	0.10	1
Hadley and Leegomery					
	W2009/0881	Hadley Quarry, Hadley, Telford, Shropshire.	OB	5.93	170
	W2011/0357	Land at 82 Beveley Road, Oakengates, Telford, Shropshire, TF2 6SD	GR	0.00	1
	W2012/0715	Parkdale, Hadley, Telford, Shropshire, TF1 6PE	GR	0.00	2
	W2012/0660	Glen Cottages, Brickhill Lane, Ketley, Telford, Shropshire, TF2 6SB	FR	0.00	9

FR - Former Residential FE - Former Employment OB - Other Brownfield GR - Greenfield

Ward Name	Application No	Address	Previous Use	Hectares	Not Started
	W2013/0125	Land adjacent Wayside, Horton, Telford, Shropshire	GR	0.00	1
	W2012/0493	Land To The Rear Of 26a-32, Mafeking Road, Hadley, Telford, Shropshire,	FR	0.00	4
	W2012/0133	Land adjacent to, Dairy House Farm, Horton, Telford, Shropshire, TF6 6DR	GR	0.00	1
	W2010/0094	Land adjacent to, Wayside, Horton Lane, Horton, Telford, Shropshire.	FR		1
Haygate					
	W2012/0940	Edgbaston House, Walker Street, Wellington, Telford, Shropshire, TF1 1BD	FE	0.00	4
	W2012/0103	Land off, Grooms Alley, Wellington, Telford, Shropshire	GR	0.00	40
	W2009/0971	Land at, 57, Wrockwardine Road, Wellington, Telford, Shropshire.	GR	0.20	1
	W2011/0842	23 Queen Street, Wellington, Telford, Shropshire, TF1 1EH	GR	0.00	1
	W2010/0714	The Birches, 57 Wrockwardine Road, Wellington, Tel	GR	0.00	1
Horsehay and Lightmoor					
	W2012/0301	Land adjacent Greenhurst, 14 St Lukes Road, Doseley, Telford, Shropshire, TF4 3BD	GR	0.00	1
	W2010/0619	5 Bridge Road, Horsehay, Telford, Shropshire, TF4	FR	0.00	1
	W2012/0753	Land adjacent to, Wellfield Cottage, Lawley Village, Telford, Shropshire, TF4 2PL	GR	0.00	1
	W2010/0093	All Labour In Vain, Wellington Road, Horsehay, Tel	OB	0.00	9
	W2010/0288	T A Jervis, Holywell Lane, Lightmoor, Telford, Shr	FE	0.91	26
	W2010/0524	Woodlands Farm, Woodlands Lane, Horsehay, Telford,	OB	0.00	4
	W2012/0981	The Finney, 13 Burroughs Bank, Lightmoor, Telford, Shropshire, TF4 3QS	OB	0.00	0
	W2012/0292	Horsehay Limited, Horsehay House, Bridge Road, Horsehay, Telford, Shropshire, TF4 3PY	OB	0.00	0
Ironbridge Gorge					
	W2012/0485	Land Adjacent To, Humay, Hodge Bower, Ironbridge, Telford, Shropshire, TF8 7QQ	GR	0.00	1
Ketley and Oakengates					
	W2012/0937	Land adjacent, 1 The Cloisters, Wombridge, Telford, Shropshire	GR	0.00	1
	W2011/0809	Hi View, Old Park Road, Ketley Bank, Telford, Shropshire, TF2 0DG	GR	0.00	1
	W2012/0881	Land Off, Ketley Park Road, Ketley, Telford, Shropshire	OB	0.00	86
	W2012/0764	7 Hartshill Avenue, Oakengates, Telford, Shropshire, TF2 6AR	GR	0.00	1

FR - Former Residential FE - Former Employment OB - Other Brownfield GR - Greenfield

Ward Name	Application No	Address	Previous Use	Hectares	Not Started
	W2012/0425	Grasmere, Red Lees, Ketley, Telford, Shropshire, TF1 5DE	GR	0.00	1
	W2012/0358	Land between 44 & 45 Sandbrook, Ketley, Telford, Shropshire	GR	0.00	0
	W2011/1046	Land adjacent to, 43 West Road, Ketley Bank, Telford, Shropshire, TF2 0DJ	GR	0.00	1
	W2010/0586	4 Woodwell, Red Lake, Telford, Shropshire. TF1 5EA	GR	0.00	1
	W2012/0883	Land off, Ketley Park Road, Ketley, Telford, Shropshire, TF1 5BF	GR	0.00	12
Lawley and Overdale					
	W2010/0561	30 Woodrush Heath, The Rock, Telford, Shropshire,	FR	0.00	2
	W2011/0435	Land at 29 Clares Lane Close, The Rock, Telford, Shropshire, TF3 5DA	GR	0.00	1
	W2012/0890	Land adjacent Windy Ridge, Rock Road, The Rock, Ketley, Telford, Shropshire	FR	0.00	1
Madeley					
	W2011/1032	Land off, Wrekin View, Madeley, Telford, Shropshire, TF7 5UF	GR	0.00	3
	W2011/0960	Land to rear of , 25 Coronation Crescent, Madeley, Telford, Shropshire, TF7 5EQ	FR	0.00	5
	W2012/0739	86 Burnt Hall Lane, Madeley, Telford, Shropshire, TF7 5ER	GR	0.00	2
	W2011/1075	Former ATS Euromaster, Queen Street, Madeley, Telford, Shropshire, TF7 4BH	GR	0.00	1
	W2013/0019	13 High Street, Madeley, Telford, Shropshire, TF7 5AQ	OB	0.00	1
	W2011/0894	Station House, Barkers Court, Madeley, Telford, Shropshire, TF7 5AL	GR	0.00	1
Malinslee					
	W2007/0870	The White Hart Public House, Hinkshay Road, Dawley	FE	0.40	14
	W2008/0302	Land at the junction of, King Street, Dawley, Telford, Shropshire.	OB	0.10	8
	W2010/0283	Land off, Arden Avenue, Dawley, Telford, Shropshir	FR	0.03	1
	W2010/0513	The former White Hart, Hinkshay Road, Dawley, Shropshire, TF4 3PA	OB	0.00	11
	W2012/0185	33 Church Road, Dawley, Telford, Shropshire, TF4 2AT	GR	0.00	1
	W2013/0070	Land to rear of, 33 Church Road, Dawley, Telford, Shropshire	GR	0.00	1
Muxton					
	W2010/0063	7 Fieldhouse Drive, Muxton, Telford, Shropshire, TF2 8JQ	OB	0.00	2
	W2013/0058	Land off, Muxton Lane, Muxton, Telford, Shropshire, TF2 8PF	GR	0.00	1

FR - Former Residential FE - Former Employment OB - Other Brownfield GR - Greenfield

Ward Name	Application No	Address	Previous Use	Hectares	Not Started
Newport East					
	W2010/0070	Land adjacent, 31 Water Lane, Newport, Shropshire	FE	0.00	1
	W2011/0602	Tan Bank Garage, Tan Bank, Newport, Shropshire, TF10 7LJ	FE	0.00	3
	W2012/0211	Land To The Rear Of, Maynards Croft, Newport, Shropshire, TF10 7SZ	GR	0.00	34
Newport North					
	W2010/0678	Kings Head Mobile Home Park, Green Lane, Newport, Shropshire, TF10 7LG	GR	0.00	1
	W2011/0075	Land adjacent to Chetwynd End House, Chetwynd End, Newport, Shropshire.	GR	0.00	1
Newport South					
	W2011/0489	60A & 60B Upper Bar, Newport, Shropshire	FE	0.01	0
	W2011/0334	Former Newport Business Park, Audley Road, Newport, Shropshire, TF10 7DP	FE	0.00	61
Newport West					
	W2012/1014	6, Midgley Court, High Street, Newport, Shropshire, TF10 7BG	FE	0.00	3
	W2011/0821	Land At, Wellington Road, Newport, Shropshire,	GR	0.00	285
	W2004/1071	87, 89, 91, 91A, HIGH STREET, Newport	OB	0.10	9
	W2011/0354	23 High Street, Newport, Shropshire TF10 7AT	OB	0.00	6
Park					
	W2012/0942	Land between 8 & 16, Hordley Road, Wellington, Telford, Shropshire	GR	0.00	4
	W2011/0347	Richmond House, Donnerville Gardens, Admaston, Telford, Shropshire, TF5 0DE	GR	0.00	4
St. Georges					
	W2012/0465	Land adjacent, The Trees Bungalow, The Nabb, St Georges, Telford, Shropshire, TF2 9BU	GR	0.00	1
	W2012/0993	Land adjacent 80, Freeston Avenue, St Georges, Telford, Shropshire,	GR	0.00	2
	W2012/0951	The Fountain Inn, New Road, Wrockwardine Wood, Telford, Shropshire, TF2 6JZ	OB	0.00	8
	W2012/0528	Wayside, The Nabb, St Georges, Telford, Shropshire, TF2 9DA	FR	0.00	1
	W2013/0053	Land adjacent, 14 The Nabb, St Georges, Telford, Shropshire, TF2 9BY	GR	0.00	3
	W2012/0915	Land adjacent 30 Freeston Avenue, St Georges, Telford, Shropshire	GR	0.00	2

FR - Former Residential FE - Former Employment OB - Other Brownfield GR - Greenfield

Ward Name	Application No	Address	Previous Use	Hectares	Not Started
<i>The Nedge</i>					
	W2009/0326	Randlay Centre, Randlay Community Centre, Randlay, Telford, Shropshire.	OB	1.41	12
<i>Woodside</i>					
	W2009/0051	Land at, Park Lane, Woodside, Telford, Shropshire.	OB	4.23	134
	W2011/0683	Denholme, Park Lane, Woodside, Telford, Shropshire, TF7 5HL	GR	0.00	1
<i>Wrockwardine</i>					
	W2012/0359	39 Coalmoor Lane, Coalmoor, Telford, Shropshire, TF4 3QB	OB	0.00	1
	W2010/0017	Land at, Isombridge Farm, Isombridge, Shropshire.	GR	0.09	1
	W2011/0352	Land at Broomfield House Farm, Allscott, Shropshire, Telford, TF6 5EQ	OB	0.00	2
	W2011/0390	Land adjacent to No 5, Bostock Close, Admaston, Shropshire, TF5 0AG	GR	0.00	1
	W2012/0504	Villa Farm, Grove Lane, Rodington, Shropshire, SY4 4QP	OB	0.00	2
	W2012/0827	Land Adjacent To, Dovecote Grange, Bratton Road, Bratton, Telford, Shropshire, TF5 0BT	GR	0.00	1
<i>Wrockwardine Wood and Trench</i>					
	W2011/1060	1 Greenlea Road, Trench, Telford, Shropshire, TF2 6PZ	GR	0.00	1
	W2011/1065	Burton House, Plough Road, Wrockwardine Wood, Telford, Shropshire, TF2 7AR	OB	0.00	1
	W2011/0249	News Express, Land adjacent, 90 Trench Road, Trench, Telford, Shropshire,	OB	0.00	1
	W2011/0434	Land Adjacent 1 Furnace Lane, Trench, Shropshire, TF2 7JX	GR	0.00	2
Borough				23.121	1298
FULL REFUSED					
<i>Ercall Magna</i>					
Appeal Allowe	W2008/0059	TERN FARM, LONGDON-ON-TERN	GR	1.01	7
Borough				1.0124	7

FR - Former Residential FE - Former Employment OB - Other Brownfield GR - Greenfield

Ward Name	Application No	Address	Previous Use	Hectares	Not Started
OUTLINE GRANTED					
<i>Apley Castle</i>					
	W2011/0541	Land off, Peregrine Way, Leegomery	OB	9.10	100
<i>Arleston</i>					
	W2012/0548	20 Arleston Village, Arleston, Telford, Shropshire, TF1 2LX	FR	0.00	1
	W2012/0337	Wendouree, High Street, Wellington, Telford, Shropshire, TF1 1JU	OB	0.00	1
	W2012/0547	20 Arleston Village, Arleston, Telford, Shropshire, TF1 2LX	FR	0.00	1
	W2013/0091	Land between 5 and 6 Forester Grove, Arleston, Telford, Shropshire	FR	0.00	4
<i>Brookside</i>					
	W2012/0778	Land off, Beaconsfield/Burford, Brookside, Telford, Shropshire.	OB	0.00	-23
<i>College</i>					
	W2010/0068	College Farm House, Mill Lane, Wellington, Telford	FR	0.00	2
	W2009/0067	Land at, 125, King Street, Wellington, Telford, Shropshire.	FE	0.19	13
<i>Cuckoo Oak</i>					
	W2010/0065	The Bungalow, Queen Street, Madeley, Telford, Shro	FR	0.00	7
<i>Dawley Magna</i>					
	W2011/0775	15 New Street, Dawley, Telford, Shropshire, TF4 3JU	GR	0.00	1
	W2011/0605	Netherwood, Heath Hill, Dawley, Telford, Shropshire, TF4 2JX	GR	0.00	2
	T91/0236c	Pool Hill Plots	OB	1.21	3
	T91/0236a	Station Road	OB	0.36	2
<i>Dothill</i>					
	T89/0223	Land adjoining BRJ School	GR	3.40	70
<i>Ercall</i>					
	W2010/0519	The Orchard, 137 Haygate Road, Wellington, Telford, Shropshire, TF1 2DA	FR	0.00	1
	W2011/0177	Land adjacent 77 Haygate Road, Wellington, Telford, Shropshire, TF1 2BJ	GR	0.00	2
	W2013/0032	17 Ercall Gardens, Wellington, Telford, Shropshire, TF1 1RD	GR	0.00	1

FR - Former Residential FE - Former Employment OB - Other Brownfield GR - Greenfield

Ward Name	Application No	Address	Previous Use	Hectares	Not Started
	W2010/0550	Buckatree House, 32 Ercall Lane, Wellington, Telfo	GR	0.00	1
	W2011/0043	368 Holyhead Road, Wellington, Telford, Shropshire, TF1 2DD	FR	0.00	1
<i>Ercall Magna</i>					
	W2010/0053	Cedar Lodge, Waters Upton, Shropshire.	FR	0.00	1
	W2007/1688	Land south of St Michael's Church, Waters Upton, Shropshire.	GR	0.14	2
	W2008/0619	Land adjacent to, The Old Rectory, Waters Upton	GR	0.55	12
<i>Hadley and Leegomery</i>					
	W2010/0297	46 Haybridge Road , Hadley, Telford, Shropshire	FR	0.10	0
	W2004/0981	LAND TO THE NORTH OF, HOLYHEAD ROAD, AND WEST OF, WOMB, Ketley	OB	37.80	375
	W2012/0401	Land to the side of 64 Mafeking Road, Hadley, Telford, Shropshire, TF1 5LB	GR	0.00	2
	W2011/1039	Land Adjacent to, 1-3 Castle Lane, Hadley, Telford, Shropshire, TF1 6RD	OB	0.00	3
	W2011/0949	Gladstone House, Hadley, Telford, Shropshire, TF1 5NF	OB	0.00	24
	W2011/0474	40 Castle Street, Hadley, Telford, TF1 5RA	OB	0.00	7
	W2010/0004	Land to the rear of, 47, Church Street, Hadley, Telford, Shropshire.	FR	0.02	1
<i>Haygate</i>					
	W2010/0743	Land adjacent, Springhill House, 1 Admaston Road,	GR	0.00	2
<i>Horsehay and Lightmoor</i>					
	W2002/0392	Land at Lightmoor, Telford	OB	79.20	395
	W2010/0111	Former Ibstock Brickworks, Brick Kiln Bank, Lightmoor, Telford, Shropshire, TF7 5LH	FE	0.00	100
	W2010/0577	Acorn Cottage, 36 Lawley Gate, Lawley, Telford, Sh	GR	0.00	1
	T91/0236d	Pool Hill Road	OB	0.26	4
<i>Ketley and Oakengates</i>					
	W2011/0645	Coronation Bungalow, Station Fields, Oakengates, Telford, Shropshire, TF2 6DH	FR	0.00	2
	T80/0001	Ketley Bank	OB	0.35	11
	W2010/0740	1A Lion Street, Oakengates, Telford, Shropshire, TF2 6AQ	OB	0.00	1
	W2011/0822	7 Hartshill Avenue, Oakengates, Telford, Shropshire, TF2 6AR	GR	0.00	2

FR - Former Residential FE - Former Employment OB - Other Brownfield GR - Greenfield

Ward Name	Application No	Address	Previous Use	Hectares	Not Started
	W2010/0483	34 Beveley Road, Oakengates, Telford, Shropshire,	FR	0.00	1
	W2011/0597	Redvers Guest House, Land adjacent, Holyhead Road, Oakengates, Telford, Shropshire, TF	GR	0.00	1
	W2012/0655	Land off, Bluebell Coppice, Ketley, Telford, Shropshire, TF1 5NE	GR	0.00	4
	T83/0201	Land off Greyhound Hill	OB	0.48	10
	W2012/0572	Land adjacent 8 East Road, Ketley Bank, Telford, Shropshire, TF2 0DE	OB	0.00	2
Lawley and Overdale					
	T74/0082c	Park Lane	OB	0.20	5
	W2004/0980	LAND AT, LAWLEY, The Rock	GR	157.50	2812
	W2010/0502	Land Off Park Road, Dawley Bank, Telford. Shropshi	GR	0.00	20
	W2011/0979	Land to the North of, Grove Road, Overdale, Shropshire, TF3 5AW	GR	0.00	80
	T74/0082a	Colliers Way/Acer Close	OB	5.98	163
Malinslee					
	W2011/0711	Land to the rear of, 34 Bank Road, Dawley Bank, Telford, Shropshire, TF4 2AZ	GR	0.00	1
	W2010/0036	Dawley Regeneration, Dawley, Telford, Shropshire,	OB	0.00	342
	W2012/0514	27 Church Road, Dawley, Telford, Shropshire, TF4 2AS	FR	0.00	1
Muxton					
	T86/0221b	North East Telford	OB	3.85	70
Newport North					
	W2011/0179	Land at Broomfield Road, Newport, Shropshire	GR	0.00	30
Newport West					
	W2011/0930	Beechcroft, Upper Bar, Newport, Shropshire, TF10 7AP	GR	0.00	3
	W2010/0378	Novascope House, Beaumaris Road, Newport, Shropshi	OB	0.00	4
Park					
	W2012/0395	The Acorns, Donnerville Gardens, Admaston, Telford, Shropshire, TF5 0DE	FR	0.00	6
Priorslee					
	W2010/0459	Land off St Georges By Pass, Snedshill, Telford, S	GR	0.00	33

FR - Former Residential FE - Former Employment OB - Other Brownfield GR - Greenfield

Ward Name	Application No	Address	Previous Use	Hectares	Not Started
	W2010/0459	Land off St Georges By Pass, Snedshill, Telford, S	GR	0.00	0
	W2003/1316	Redhill Clay Pit, Redhill Way, St. Georges	OB	17.60	228
	T88/0216b	Land at Priorslee Road	GR	2.21	75
	T88/0216a	Land at Priorslee Road	GR	0.90	25
	T86/0021	Donnington Wood (Rem)	OB	3.82	85
	S71/10	LAND AT, ST GEORGES ROAD, DONNINGTON, WROCKWARDINE WOOD	GR	0.40	13
	T85/0125Af	Priorslee East Area D3	GR	0.40	6
<i>The Nedge</i>					
	T91/0242	The Hem (Nedge)	GR	16.14	250
	T68/0020a	Land off Randlay Avenue	GR	4.01	13
<i>Woodside</i>					
	T78/0114a	LAND OFF, STANIER DRIVE, MADELEY (RP1)	OB	3.27	70
	W2011/0911	5 Brick Kiln Bank, Lightmoor, Telford, Shropshire, TF7 5PQ	FR	0.00	1
<i>Wrockwardine</i>					
	T88/0229w	Arleston Lane East	OB	0.58	15
	W2013/0033	21 Bratton Road, Bratton, Telford, Shropshire, TF5 0BT	GR	0.00	5
	W2011/0745	St Christophers Hall, Station Road, Admaston, Telford, Shropshire, TF5 0AL	OB	0.00	2
	T88/0229v	Arleston Lane West	OB	0.26	6
<i>Wrockwardine Wood and Trench</i>					
	W2012/0833	72 Trench Road, Trench, Telford, Shropshire, TF2 6PF	GR	0.00	1
Borough				350.28	5518

FR - Former Residential FE - Former Employment OB - Other Brownfield GR - Greenfield

Ward Name	Application No	Address	Previous Use	Hectares	Not Started
RESERVE MATTERS GRANTED					
<i>Hadley and Leegomery</i>					
	W2011/0992	Land at, Beveley Road, Ketley, Telford, Shropshire.	OB	0.39	20
<i>Horsehay and Lightmoor</i>					
	W2009/0716	Land at Lightmoor Way, Lightmoor, Telford Telford.	GR	0.66	2
<i>Lawley and Overdale</i>					
	W2008/0411	Land at, Park Road, Dawley Bank, Telford, Shropshire.	GR	0.39	12
<i>Muxton</i>					
	W2009/0542	Muxton C2/C3, Marshbrook Way, Muxton, Telford, Shropshire.	GR	5.99	20
Borough				7.4293	54

FR - Former Residential FE - Former Employment OB - Other Brownfield GR - Greenfield

Ward Name	Application No	Address	Previous Use	Hectares	Not Started
RESERVED MATTERS GRANTED					
<i>Brookside</i>					
	W2012/0714	Former Brindleyford School, Brindleyford, Brookside, Telford, Shropshire.	OB	1.30	34
<i>Dawley Magna</i>					
	W2011/0256	Dulce Domum, Land adjacent, Heath Hill, Dawley, Telford, Shropshire,	FR	0.00	1
<i>Ercall</i>					
	W2012/1021	Ercall Wood Technology College, Limekiln Lane, Wellington, TF1 2JA	OB	0.00	50
<i>Horsehay and Lightmoor</i>					
	W2012/0300	Land adjacent Greenhurst, 14 St Lukes Road, Doseley, Telford, Shropshire, TF4 3BD	GR	0.00	3
	W2011/0506	Land at Lightmoor, Phases 3 & 4, Telford, Shropshire.	GR	0.00	66
	W2011/0500	Phase 1, The Croppings, Lightmoor, Telford, Shropshire,	GR	0.00	87
	W2011/0093	Lawley Farm, Dawley Road, Lawley, Telford, Shropshire.	GR	0.00	15
	W2010/0817	Lawley Farm, Dawley Road, Lawley, Telford,	GR	0.00	1
	W2012/0419	Lawley Phase 6, Dawley Road, Lawley , Telford, Shropshire.	GR	0.00	370
<i>Ketley and Oakengates</i>					
	W2010/0521	Telford Millennium Community, Ketley, Telford, Shropshire,	OB	0.00	1
	W2010/0544	Craiglea, Holyhead Road, Ketley, Telford, Shropshire, TF1 5AN	GR	0.00	1
	W2011/0852	Capewell Works, Sommerfield Road, Trench Lock, Telford, Shropshire,	GR	0.00	2
	W2012/0775	Land Adjacent To, Nova Espero, Hadley Road, Oakengates, Telford, Shropshire, TF2 6HJ	GR	0.00	1
	W2010/0200	Capewell Works, Sommerfield Road, Trench Lock, Tel	FE	0.00	113
<i>Lawley and Overdale</i>					
	W2011/0488	Phases 3 & 4 Lawley Village, Lawley Drive, Lawley, Telford,	GR	0.00	308
<i>Muxton</i>					
	W2012/0371	Muxton C2, C3, Marshbrook Way, Muxton, Telford, Shropshire,	GR	0.00	2
	W2012/0709	C3, C2, Marshbrook Way, Muxton, Telford, Shropshire,	GR	0.00	20

FR - Former Residential FE - Former Employment OB - Other Brownfield GR - Greenfield

Ward Name	Application No	Address	Previous Use	Hectares	Not Started
Priorslee					
	W2012/0587	Redhill Clay Pit, Redhill Way, St Georges, Telford, Shropshire,	OB	0.00	103
Wrockwardine					
	W2012/0895	Land Adjacent 17, Charlton, Telford, Shropshire, TF6 5EH	OB	0.00	2
Borough				1.3033	1180
TOTALS				383.1	8055

FR - Former Residential FE - Former Employment OB - Other Brownfield GR - Greenfield

Appendix 4a - Completed Employment Floorspace 2012/13

Application No	Address	Use Class	Previous Use	Sq M	Hectares
W2012/0034	Stockton House Barns Stockton Newport	B1(a)	GR	1194	0.40
W2009/1058	TTC Group Hadley Park Hadley, Telford, Shropshire.	B1(a)	PDL	51	0.38
W2011/0198	77 High Street Newport	B1(a)	PDL	-318	0.05
W2012/0057	23, Gladstone House High Street Hadley	B1(a)	PDL	-248	0.02
W2012/0096	32 High Street Newport	B1(a)	PDL	-55	0.01
W2012/0160	46 Market Street Oakengates	B1(a)	PDL	-117	0.01
W2012/0414	5 Tyrone House Church Street Wellington	B1(a)	PDL	-33	0.00
W2012/0432	11 Dawley Road Arleston	B1(a)	PDL	-88	0.03
W2012/0492	Unit C Stafford Park 7 Stafford Park	B1(a)	PDL	680	2.71
W2012/0592	48A Walker Street Wellington	B1(a)	PDL	-65	0.01
W2012/0782	9-10 Burton Street Dawley	B1(a)	PDL	-34	0.03
W2012/0930	17a Market Street Oakengates	B1(a)	PDL	-112	0.01
W2012/0952	Unit 6, Hadley Business Park Hadley Park Road Hadley	B1(a)	PDL	-180	0.02
W2012/0965	Addenbrooke House Ironmasters Way Telford Town Centre	B1(a)	PDL	-71	0.10
Use Class Net				604	
Use Class Gross				1925	
W2010/0597	Littleworth Farm Little Wenlock	B1(c)	GR	300	0.30
W2009/0723	The Beehive New Road Wrockwardine Wood	B1(c)	PDL	-100	0.02
W2009/1071	Faccenda Group Hortonwood 60 Hortonwood, Telford, Shropshire.	B1(c)	PDL	114	1.55
W2011/0308	Unit 24 Horton Court Hortonwood	B1(c)	PDL	-96	0.01
W2011/0326	Unit C Hortonwood 37 Hortonwood	B1(c)	PDL	-928	0.81
W2011/0326	Unit C Hortonwood 37 Hortonwood	B1(c)	PDL	696	0.81
W2011/0334	Former Newport Business Park Audley Road Newport	B1(c)	PDL	-250	1.51
W2012/0607	Unit 9, Donnington Wood Workshops Bradley Road Donnington	B1(c)	PDL	-150	0.02
W2012/0724	Wrekin Windows, Unit D1-D4 Stafford Park 4 Stafford Park	B1(c)	PDL	29	0.03
W2012/0911	Units B1 & B2 Hortonwood 10 Hortonwood	B1(c)	PDL	225	0.08

Application No	Address	Use Class	Previous Use	Sq M	Hectares
Use Class Net				-160	
Use Class Gross				1364	
W2007/1252	Doseley Works Doseley	B2	PDL	-2970	2.15
W2011/0326	Unit C Hortonwood 37 Hortonwood	B2	PDL	-928	0.81
W2011/0326	Unit C Hortonwood 37 Hortonwood	B2	PDL	696	0.81
W2011/0699	Unit 9, Merrythought Village The Wharfage Ironbridge	B2	PDL	-451	0.05
W2011/1080	Former Rapid Fit Building Haybridge Road Hadley	B2	PDL	79	0.11
W2012/0254	Unit C Stafford Park 7 Stafford Park	B2	PDL	25	1.40
W2012/0338	Agropharm Ltd Overley	B2	PDL	316	2.83
W2012/0354	Unit 7, Springfield Industrial Estate Newport	B2	PDL	196	0.14
W2012/0911	Units B1 & B2 Hortonwood 10 Hortonwood	B2	PDL	225	0.08
Use Class Net				-2812	
Use Class Gross				1537	
W2011/1007		B8		577	
W2012/0397		B8		0	
W2007/1586	Bourne Transport The Grange High Ercall	B8	PDL	1110	0.10
W2009/1019	Facenda Group Hortonwood 60 Hortonwood, Telford, Shropshire.	B8	PDL	-50	0.72
W2010/0495	1a New Road Madeley	B8	PDL	-66	0.01
W2011/0326	Unit C Hortonwood 37 Hortonwood	B8	PDL	696	0.81
W2011/0326	Unit C Hortonwood 37 Hortonwood	B8	PDL	-928	0.81
W2012/0006	Former Newport Delivery Office 132 High Street Newport	B8	PDL	-415	0.25
W2012/0096	32 High Street Newport	B8	PDL	20	0.01
W2012/0217	Borgers Ltd Hortonwood 30 Hortonwood	B8	PDL	1000	2.45
W2012/0230	The Laurels Stars Lane Cold Hatton Heath	B8	PDL	104	0.31
W2012/0488	Enta Technologies Limited Stafford Park 6 Stafford Park	B8	PDL	1118	1.97
W2012/0492	Unit C Stafford Park 7 Stafford Park	B8	PDL	-680	2.71
W2012/0835	Unit 5, Audley Avenue Business Park Audley Avenue Newport	B8	PDL	-915	0.90
W2012/0911	Units B1 & B2 Hortonwood 10 Hortonwood	B8	PDL	225	0.08

Application No	Address	Use Class	Previous Use	Sq M	Hectares
Use Class Net				1795	
Use Class Gross				4850	
Borough Net Totals				-573	
Borough Gross Totals				9676	

Appendix 4b - Other Non-residential Completed Floorspace 2012/13

Application No	Address	Use Class	Previous Use	Sq M	Hectares
W2006/0229	AA SERVICE CENTRE, HALFORDS, UNIT 1 TELFORD BRIDGE RETAIL PK Old Park	A1	PDL	383	0.04
W2008/0696	39 New Street Wellington	A1	PDL	-150	0.01
W2008/0696	39 New Street Wellington	A1	PDL	50	0.01
W2009/0155	Land off Pool Farm Avenue Leegomery Telford	A1	PDL	727	0.41
W2009/0326	Randlay Centre Randlay Community Centre Randlay, Telford, Shropshire.	A1	PDL	-450	0.92
W2009/0326	Randlay Centre Randlay Community Centre Randlay, Telford, Shropshire.	A1	PDL	450	0.92
W2009/0374	Land at Euston Park Euston Way Telford Town Centre	A1	PDL	-15	0.01
W2009/1059	Land adjacent to 9 Fieldhouse Drive Muxton	A1	PDL	56	0.13
W2010/0102	6, Baddeley Court High Street Newport	A1	PDL	-52	0.01
W2010/0298	33 Upper Bar Newport	A1	PDL	-181	0.04
W2010/0589	Little Dawley Snooker Club Holly Road Little Dawley	A1	PDL	669	0.07
W2010/0783	Commercial Unit 3 Off Lightmoor Way Lightmoor Village	A1	PDL	-80	0.07
W2011/0326	Unit C Hortonwood 37 Hortonwood	A1	PDL	696	0.81
W2011/0397	Land off Park Lane Woodside	A1	PDL	451	0.24
W2011/0699	Unit 9, Merrythought Village The Wharfage Ironbridge	A1	PDL	452	0.05
W2011/0951	Former Toybox Creche Southwater Way Telford Town Centre	A1	PDL	698	0.20
W2011/0953	Gladstone House Hadley	A1	PDL	-1000	0.98
W2012/0096	32 High Street Newport	A1	PDL	-62	0.01
W2012/0457	The Flower Shop 9A High Street Madeley	A1	PDL	-69	0.01
W2012/0475	17 St. Marys Street Newport	A1	PDL	-38	0.01
W2012/0509	121A Ashdown Lane Town Centre	A1	PDL	-24	0.01
W2012/0667	Aero Garage Chetwynd End Newport	A1	PDL	493	0.17
W2012/0706	38 Haybridge Road Hadley	A1	PDL	-100	0.02
W2012/0802	215 Dean Street Telford Shopping Centre Telford Town Centre	A1	PDL	-96	0.02

Use Class Net

Use Class Gross

0

Application No	Address	Use Class	Previous Use	Sq M	Hectares
W2012/0457	The Flower Shop 9A High Street Madeley	A2	PDL	69	0.01
W2012/0509	121A Ashdown Lane Town Centre	A2	PDL	24	0.01
W2012/0562	1 Russell Square Madeley	A2	PDL	-116	0.01
W2012/0592	48A Walker Street Wellington	A2	PDL	65	0.01
W2012/0802	215 Dean Street Telford Shopping Centre Telford Town Centre	A2	PDL	96	0.02

Use Class Net

Use Class Gross

				0	
W2010/0102	6, Baddeley Court High Street Newport	A3	PDL	52	0.01
W2010/0627	Ironstone Square Lawley	A3	PDL	662	2.44
W2011/0566	49 High Street Newport	A3	PDL	-207	0.02
W2011/1020	The Pheasant Inn 14 Coalport Road Madeley	A3	PDL	-211	0.04
W2012/0096	32 High Street Newport	A3	PDL	70	0.01
W2012/0562	1 Russell Square Madeley	A3	PDL	116	0.01
W2012/0675	McDonalds Restaurant Limited, Wrekin Retail Park Whitchurch Drive Wellington	A3	PDL	6	0.47
W2012/0965	Addenbrooke House Ironmasters Way Telford Town Centre	A3	PDL	71	0.10

Use Class Net

Use Class Gross

				0	
W2009/0155	Land off Pool Farm Avenue Leegomery Telford	A5	PDL	133	0.41
W2009/0374	Land at Euston Park Euston Way Telford Town Centre	A5	PDL	15	0.01
W2010/0298	33 Upper Bar Newport	A5	PDL	181	0.04

Use Class Net

Use Class Gross

				0	
W2008/0636	Hadley Park House Hotel Hadley	C1	PDL	761	0.70
W2010/0366	The Old Church Park Avenue Madeley	C1	PDL	-140	0.03
W2011/0988	The Valley Hotel Buildwas Road Coalbrookdale	C1	PDL	-67	0.77
W2011/0988	The Valley Hotel Buildwas Road Coalbrookdale	C1	PDL	210	0.77
W2012/0006	Former Newport Delivery Office 132 High Street Newport	C1	PDL	610	0.25

Application No	Address	Use Class	Previous Use	Sq M	Hectares
W2012/0575	Former Newport Delivery Office 132 High Street Newport	C1	PDL	29	0.25
Use Class Net				0	
Use Class Gross				0	
W2012/0290		C2		18	
W2012/0673		C2		160	
W2011/1049	The Former Bridge School Brookside Avenue Brookside	C2	PDL	2640	0.34
Use Class Net				0	
Use Class Gross				0	
W2008/1233	Shawburch Medical Practice Acorn Way Shawburch	D1	PDL	35	0.07
W2009/0657	Wrekin View Primary School North Road Wellington, Telford, Shropshire.	D1	PDL	258	2.24
W2009/0672	St Patricks Primary School North Road Wellington, Telford, Shropshire.	D1	PDL	9	1.07
W2010/0366	The Old Church Park Avenue Madeley	D1	PDL	140	0.03
W2010/0783	Commercial Unit 3 Off Lightmoor Way Lightmoor Village	D1	PDL	80	0.07
W2011/0302	Telford & Wrekin Register Office The Beeches, 29 Vineyard Road Wellington	D1	PDL	-213	0.12
W2011/0308	Unit 23 Horton Court Hortonwood	D1	PDL	96	0.01
W2011/0566	49 High Street Newport	D1	PDL	207	0.02
W2011/0788	Mount Gilbert School Hinkshay Road Dawley	D1	PDL	178	2.50
W2011/0951	Former Toybox Creche Southwater Way Telford Town Centre	D1	PDL	-122	0.20
W2011/1049	The Former Bridge School Brookside Avenue Brookside	D1	PDL	-2000	0.34
W2012/0071	Donnington Health Centre Wrekin Drive Donnington	D1	PDL	-913	0.45
W2012/0202	Holy Trinity Church Hall Holyhead Road Oakengates	D1	PDL	-530	0.06
W2012/0208	Telford College of Arts & Technology Haybridge Road Wellington	D1	PDL	935	0.65
W2012/0414	5 Tyrone House Church Street Wellington	D1	PDL	33	0.00
W2012/0563	New College King Street Wellington	D1	PDL	-236	0.10
W2012/0570	Telford College of Arts & Technology Haybridge Road Wellington	D1	PDL	1240	0.65
W2012/0570	Telford College of Arts & Technology Haybridge Road Wellington	D1	PDL	-928	0.65
W2012/0571	Audley Court Audley Avenue Newport	D1	PDL	248	1.33
W2012/0607	Unit 9, Donnington Wood Workshops Bradley Road Donnington	D1	PDL	150	0.02

Application No	Address	Use Class	Previous Use	Sq M	Hectares
W2012/0634	The Princess Royal Hospital Apley Castle Apley	D1	PDL	44	0.44
W2012/0654	Muxton County Primary School Marshbrook Way Muxton	D1	PDL	-162	1.16
W2012/0930	17a Market Street Oakengates	D1	PDL	112	0.01

Use Class Net

Use Class Gross				0	
W2012/0864	Field Aston Reservoir Newport	D2	GR	100	2.30
W2009/0326	Randlay Centre Randlay Community Centre Randlay, Telford, Shropshire.	D2	PDL	403	0.92
W2010/0256	Telford International Centre St Quentin Gate Telford Town Centre	D2	PDL	6800	0.72
W2010/0589	Little Dawley Snooker Club Holly Road Little Dawley	D2	PDL	-669	0.07
W2012/0057	23, Gladstone House High Street Hadley	D2	PDL	248	0.02
W2012/0202	Holy Trinity Church Hall Holyhead Road Oakengates	D2	PDL	530	0.06
W2012/0475	17 St. Marys Street Newport	D2	PDL	38	0.01
W2012/0835	Unit 5, Audley Avenue Business Park Audley Avenue Newport	D2	PDL	915	0.90
W2012/0911	Units B1 & B2 Hortonwood 10 Hortonwood	D2	PDL	-675	0.08
W2012/0952	Unit 6, Hadley Business Park Hadley Park Road Hadley	D2	PDL	180	0.02

Use Class Net

Use Class Gross				0	
W2010/0082	Stirchley Grange Stirchley Village Stirchley	NK	PDL	-500	0.22
W2012/0096	32 High Street Newport	NK	PDL	-15	0.01

Use Class Net

Use Class Gross				0	
W2011/0517		SG		0	
W2012/0707		SG		0	
W2012/0786		SG		0	
W2012/0880	20 Meeson Meeson	SG	GR	119	0.57
W2006/0229	AA SERVICE CENTRE, HALFORDS, UNIT 1 TELFORD BRIDGE RETAIL PK Old Park	SG	PDL	-383	0.04
W2009/1019	Facenda Group Hortonwood 60 Hortonwood, Telford, Shropshire.	SG	PDL	50	0.72

Application No	Address	Use Class	Previous Use	Sq M	Hectares
W2012/0667	Aero Garage Chetwynd End Newport	SG	PDL	-493	0.17
W2012/0706	38 Haybridge Road Hadley	SG	PDL	100	0.02
Use Class Net					
Use Class Gross				0	
Borough Net Totals					
Borough Gross Totals				0	

Appendix 4c - Town Centre Uses Completed Floorspace 2012/13

Application No	Address	Use Class	Previous Use	Sq M	Hectares
W2008/0696	39 New Street Wellington	A1	PDL	-96	0.01
W2009/0155	Land off Pool Farm Avenue Leegomery Telford	A1	PDL	700	0.41
W2009/0326	Randlay Centre Randlay Community Centre Randlay, Telford, Shropshire.	A1	PDL	0	0.92
W2009/1059	Land adjacent to 9 Fieldhouse Drive Muxton	A1	PDL	54	0.13
W2010/0102	6, Baddeley Court High Street Newport	A1	PDL	-50	0.01
W2010/0298	33 Upper Bar Newport	A1	PDL	-174	0.04
W2010/0589	Little Dawley Snooker Club Holly Road Little Dawley	A1	PDL	644	0.07
W2010/0783	Commercial Unit 3 Off Lightmoor Way Lightmoor Village	A1	PDL	-77	0.07
W2011/0326	Unit C Hortonwood 37 Hortonwood	A1	PDL	670	0.81
W2011/0397	Land off Park Lane Woodside	A1	PDL	434	0.24
W2011/0699	Unit 9, Merrythought Village The Wharfage Ironbridge	A1	PDL	435	0.05
W2011/0951	Former Toybox Creche Southwater Way Telford Town Centre	A1	PDL	672	0.20
W2011/0953	Gladstone House Hadley	A1	PDL	-963	0.98
W2012/0096	32 High Street Newport	A1	PDL	-60	0.01
W2012/0667	Aero Garage Chetwynd End Newport	A1	PDL	475	0.17
W2012/0706	38 Haybridge Road Hadley	A1	PDL	-96	0.02
W2012/0034	Stockton House Barns Stockton Newport	B1(a)	GR	1149	0.40
W2009/1058	TTC Group Hadley Park Hadley, Telford, Shropshire.	B1(a)	PDL	49	0.38
W2011/0198	77 High Street Newport	B1(a)	PDL	-306	0.05
W2012/0057	23, Gladstone House High Street Hadley	B1(a)	PDL	-239	0.02
W2012/0096	32 High Street Newport	B1(a)	PDL	-53	0.01
W2012/0160	46 Market Street Oakengates	B1(a)	PDL	-113	0.01
W2012/0432	11 Dawley Road Arleston	B1(a)	PDL	-85	0.03
W2012/0492	Unit C Stafford Park 7 Stafford Park	B1(a)	PDL	655	2.71
W2012/0782	9-10 Burton Street Dawley	B1(a)	PDL	-33	0.03

Application No	Address	Use Class	Previous Use	Sq M	Hectares
W2012/0952	Unit 6, Hadley Business Park Hadley Park Road Hadley	B1(a)	PDL	-173	0.02
W2012/0864	Field Aston Reservoir Newport	D2	GR	96	2.30
W2009/0326	Randlay Centre Randlay Community Centre Randlay, Telford, Shropshire.	D2	PDL	388	0.92
W2010/0256	Telford International Centre St Quentin Gate Telford Town Centre	D2	PDL	6545	0.72
W2010/0589	Little Dawley Snooker Club Holly Road Little Dawley	D2	PDL	-644	0.07
W2012/0057	23, Gladstone House High Street Hadley	D2	PDL	239	0.02
W2012/0202	Holy Trinity Church Hall Holyhead Road Oakengates	D2	PDL	510	0.06
W2012/0835	Unit 5, Audley Avenue Business Park Audley Avenue Newport	D2	PDL	881	0.90
W2012/0911	Units B1 & B2 Hortonwood 10 Hortonwood	D2	PDL	-650	0.08
W2012/0952	Unit 6, Hadley Business Park Hadley Park Road Hadley	D2	PDL	173	0.02
Area Net				10958	
Area Gross				14768	
Madeley					
W2012/0457	The Flower Shop 9A High Street Madeley	A1	PDL	-66	0.01
W2012/0457	The Flower Shop 9A High Street Madeley	A2	PDL	66	0.01
W2012/0562	1 Russell Square Madeley	A2	PDL	-112	0.01
Area Net				-112	
Area Gross				66	
Newport					
W2012/0475	17 St. Marys Street Newport	A1	PDL	-37	0.01
W2012/0475	17 St. Marys Street Newport	D2	PDL	37	0.01
Area Net				0	
Area Gross				37	
Oakengates					
W2012/0930	17a Market Street Oakengates	B1(a)	PDL	-108	0.01
Area Net				-108	
Area Gross				0	

Application No	Address	Use Class	Previous Use	Sq M	Hectares
Town Centre					
W2006/0229	AA SERVICE CENTRE, HALFORDS, UNIT 1 TELFORD BRIDGE RETAIL PK Old Park	A1	PDL	369	0.04
W2009/0374	Land at Euston Park Euston Way Telford Town Centre	A1	PDL	-14	0.01
W2012/0509	121A Ashdown Lane Town Centre	A1	PDL	-23	0.01
W2012/0802	215 Dean Street Telford Shopping Centre Telford Town Centre	A1	PDL	-92	0.02
W2012/0509	121A Ashdown Lane Town Centre	A2	PDL	23	0.01
W2012/0802	215 Dean Street Telford Shopping Centre Telford Town Centre	A2	PDL	92	0.02
W2012/0965	Addenbrooke House Ironmasters Way Telford Town Centre	B1(a)	PDL	-68	0.10
Area Net				286	
Area Gross				484	
Wellington					
W2012/0592	48A Walker Street Wellington	A2	PDL	63	0.01
W2012/0414	5 Tyrone House Church Street Wellington	B1(a)	PDL	-32	0.00
W2012/0592	48A Walker Street Wellington	B1(a)	PDL	-63	0.01
Area Net				-32	
Area Gross				63	
Borough Net Totals				10992	
Borough Gross Totals				15417	

Appendix 5 - Non-residential Under Construction 2012/13

Year	Application No	Address	Change	Use Class	Hectares	Sq M
2013	W2011/0489	60A & 60B Upper Bar Newport	CU	A1	0.03	-116.42
Ward Totals					0.03	-116.42
Brookside						
2013	W2012/0866	Land off Burford Brookside	NEW	A1	0.17	534.4
2013	W2012/0866	Land off Burford Brookside	NEW	A5	0.17	86.4
Ward Totals					0.34	620.8
College						
2013	W2007/0667	Telford Islamic Centre, 88 King Street Wellington	CU	D1	0.23	2440
2013	W2007/0667	Telford Islamic Centre, 88 King Street Wellington	CU	D2	0.23	-2440
2013	W2012/0543	Wrekin College Sutherland Road Wellington	EXT	D1	0.08	313
2013	W2012/0563	New College King Street Wellington	EXT	D1	0.10	837
2013	W2013/0025	Telford College of Arts & Technology Haybridge Road Wellington	EXT	D1	0.14	50
Ward Totals					0.78	1200
Cuckoo Oak						
2013	W2012/0431	Plot 4 Halesfield 23 Halesfield	NEW	B1(a)	0.52	80
2013	W2012/0431	Plot 4 Halesfield 23 Halesfield	NEW	B2	0.52	60
2013	W2012/0431	Plot 4 Halesfield 23 Halesfield	NEW	SG	0.52	140
2013	W2012/0790	Information Technology Rentals Ltd, Technology House Halesfield 7 Halesfield	EXT	B2	0.18	832.5
Ward Totals					1.74	1112.5
Dawley Magna						
2013	W2012/0846	Station Inn Station Road Dawley	CU	A4	0.17	-281
Ward Totals					0.17	-281

CU - Change of Use EXT - Extension DEM - Demolition REP - Replacement Building MOB - Mobile Unit

Year	Application No	Address	Change	Use Class	Hectares	Sq M
Donnington						
2013	W2012/0071	Donnington Health Centre Wrekin Drive Donnington	NEW	D1	0.45	939
Ward Totals					0.45	939
Edgmond						
2013	W2010/0811	Harper Adams University College Edgmond	NEW	D1	0.63	1246
2013	W2012/0693	Harper Adams University College Edgmond	REP	D1	0.41	1470
Ward Totals					1.04	2716
Ercall Magna						
2013	W2009/0442	13 Green Acres Farm Crudgington	CU	Other	1.06	0
Ward Totals					1.06	0
Hadley and Leegomery						
2013	W2011/0953	Gladstone House Hadley	REP	A1	0.98	511
2013	W2011/0953	Gladstone House Hadley	NEW	A2	0.98	140
2013	W2011/0953	Gladstone House Hadley	NEW	A3	0.98	140
2013	W2011/0953	Gladstone House Hadley	NEW	A5	0.98	140
2013	W2011/0953	Gladstone House Hadley	NEW	D1	0.98	245
2013	W2012/0832	Site E Hortonwood 45 Hortonwood	NEW	B1(a)	4.60	498
2013	W2012/0832	Site E Hortonwood 45 Hortonwood	NEW	B2	4.60	8470
Ward Totals					14.10	10144
Horsehay and Lightmoor						
2013	W2012/0292	Horsehay Limited, Horsehay House Bridge Road Horsehay	CU	B1(a)	0.13	-540
2013	W2012/0292	Horsehay Limited, Horsehay House Bridge Road Horsehay	CU	C3	0.13	540
Ward Totals					0.26	0
Ketley and Oakengates						
2013	W2005/0906	WELLINGS LTD WASTE RECYCLING CENTRE, RO Ketley	NEW	Other	2.64	500

CU - Change of Use EXT - Extension DEM - Demolition REP - Replacement Building MOB - Mobile Unit

Year	Application No	Address	Change	Use Class	Hectares	Sq M
Ward Totals					2.64	500
Lawley and Overdale						
2013	W2010/0627	Ironstone Square Lawley	NEW	A1	2.44	5000
2013	W2011/0800	Lawley Square Newdale Valley Lawley	NEW	A1	0.36	212.5
2013	W2011/0800	Lawley Square Newdale Valley Lawley	NEW	A2	0.36	212.5
2013	W2011/0800	Lawley Square Newdale Valley Lawley	NEW	A3	0.36	212.5
2013	W2011/0800	Lawley Square Newdale Valley Lawley	NEW	A5	0.36	212.5
2013	W2011/0800	Lawley Square Newdale Valley Lawley	NEW	B1(a)	0.36	162.5
2013	W2011/0800	Lawley Square Newdale Valley Lawley	NEW	D1	0.36	162.5
2013	W2012/0008	Southwater Telford Town Centre	NEW	A1	1.97	62
2013	W2012/0008	Southwater Telford Town Centre	DEM	A2	1.97	-1174
2013	W2012/0008	Southwater Telford Town Centre	NEW	A2	1.97	62
2013	W2012/0008	Southwater Telford Town Centre	NEW	A3	1.97	1208
2013	W2012/0008	Southwater Telford Town Centre	NEW	A4	1.97	1208
2013	W2012/0008	Southwater Telford Town Centre	NEW	B1(a)	1.97	62
2013	W2012/0008	Southwater Telford Town Centre	NEW	C1	1.97	3084
2013	W2012/0008	Southwater Telford Town Centre	DEM	D1	1.97	-55
2013	W2012/0008	Southwater Telford Town Centre	NEW	D2	1.97	4937
Ward Totals					22.33	15569
Madeley						
2013	W2012/0892	Woodlands Primary School Ironbridge Road Madeley	MOB	D1	0.14	35.9
Ward Totals					0.14	35.9
Malinslee						
2013	W2011/0591	Dawley Regeneration Dawley	NEW	D1	10.04	10055
2013	W2012/0472	Southwater Square Southwater Way Telford Town Centre	NEW	A3	2.01	312.5
2013	W2012/0472	Southwater Square Southwater Way Telford Town Centre	NEW	A4	2.01	312.5

CU - Change of Use EXT - Extension DEM - Demolition REP - Replacement Building MOB - Mobile Unit

Year	Application No	Address	Change	Use Class	Hectares	Sq M
2013	W2012/0472	Southwater Square Southwater Way Telford Town Centre	NEW	D1	2.01	3910
2013	W2012/0523	Hindu Cultural Resource Centre 20-22 Bank Road Dawley Bank	EXT	D1	0.13	8
Ward Totals					16.20	14598
Muxton						
2013	W2012/0654	Muxton County Primary School Marshbrook Way Muxton	EXT	D1	1.16	352
Ward Totals					1.16	352
Newport East						
2013	W2012/0479	48 Stafford Road Newport	DEM	SG	0.10	-228.7
Ward Totals					0.10	-228.7
Newport South						
2013	W2012/0316	Audley Court Audley Avenue Newport	EXT	C2	1.33	266
2013	W92/0970	Newport Silo Audley Avenue Newport	REP	B8	2.91	1340
Ward Totals					4.24	1606
The Nedge						
2013	W2009/0326	Randlay Centre Randlay Community Centre Randlay, Telford, Shropshire.	DEM	D2	0.92	-403
2013	W2012/0973	Mail Solutions Ltd Stafford Park 9 Stafford Park	EXT	B2	1.33	1199
Ward Totals					2.25	796
Wrockwardine						
2013	W2012/0672	Upper Coalmoor Farm Moreton Coppice Coalmoor	DEM	NK	0.03	-172
Ward Totals					0.03	-172
Borough Totals					69.05	49391.08

CU - Change of Use EXT - Extension DEM - Demolition REP - Replacement Building MOB - Mobile Unit

Appendix 6a - Employment Land New Build Not Started 2012/13

Year	Application No	Address	Use Class	Hectares	Sq M
2013	SA6	Central Old Park Caledonian Way	B1(a)	1.14	3600
2013	SA7	Central Park Telford	B1(a)	14.62	35000
2013	SA8	Telford Way Telford Town Centre	B1(a)	3.13	15800
2013	T91/0243	SOUTH WEST TELFORD	B2	2.86	28580
Ward Totals				21.75	82980
Church Aston and Lilleshall					
2013	WLPa	AUDLEY AVENUE IND ESTATE AUDLEY AVENUE	B2	3.05	30500
Ward Totals				3.05	30500
Cuckoo Oak					
2013	T77/0007c	HALESFIELD 9 HALESFIELD	B2	0.36	4940
2013	T77/101m	HALESFIELD NORTH HALESFIELD	B2	0.64	6682
2013	T77/101n	HALESFIELD NORTH HALESFIELD	B2	0.74	7035
2013	T86/0007a	EP 7 (1) HALESFIELD N HALESFIELD	B2	2.03	5000
2013	T86/0007b	EP 7 (1) HALESFIELD 19 HALESFIELD	B2	3.80	3800
2013	T91/0238	LAND OFF BRIDGNORTH ROAD CUCKOO OAK	B2	1.65	16450
2013	WLPb	LP ALLOCATION (RFT) HALESFIELD	B8	4.39	43910
Ward Totals				13.61	87817
Dawley Magna					
2013	W2008/1279	Heath Hill Industrial Estate	B2	0.22	452
Ward Totals				0.22	452
Donnington					

Year	Application No	Address	Use Class	Hectares	Sq M
2013	T77/101c	EP 7 (1) HORTONWOOD N HORTONWOOD	B8	3.83	38270
Ward Totals				3.83	38270
Ercall Magna					
2013	T91/0103	SHAWBIRCH CAMPUS SITE - AMENDMENT 2	B1(a)	22.29	222900
Ward Totals				22.29	222900
Hadley and Leegomery					
2013	T77/101b	EP 7 (1) HORTONWOOD N HORTONWOOD	B2	3.82	7035
2013	T77/101d	EP 7 (1) HORTONWOOD N HORTONWOOD	B8	2.82	12926
2013	T87/207b	HADLEY PARK A HADLEY	B1(a)	0.53	5261
2013	T87/207d	LAND OFF QUEENSWAY HADLEY CAMPUS	B1(a)	1.82	18200
2013	T88/0234b	HORTONWOOD NE HORTONWOOD	B8	0.70	6973
2013	T88/0234c	HORTONWOOD N HORTONWOOD	B1(a)	2.70	26660
2013	T88/0234f	EP 7 (1) HORTONWOOD N HORTONWOOD N	B8	5.51	55120
2013	T88/0234g	HORTONWOOD N HORTONWOOD	B8	6.99	69100
2013	T88/0234h	HORTONWOOD N HORTONWOOD	B8	7.13	2422
2013	T88/0234i	HORTONWOOD N HORTONWOOD	B1(a)	10.22	102200
2013	T90/0025	HADLEY CASTLE WEST HADLEY	B8	9.71	73470
2013	W2012/0922	Land off Hadley Road East	B1(a)	0.42	730
2013	W2012/0922	Land off Hadley Road East	B1(c)	0.42	155
Ward Totals				52.78	380252
Horsehay and Lightmoor					
2013	C2001/0005	Land to rear of, Myford Horsehay	B2	7.34	7787
Ward Totals				7.34	7787
Lawley and Overdale					

Year	Application No	Address	Use Class	Hectares	Sq M
2013	T77/0001a	COURT SERVICE CAR PARK TOWN CENTRE	B1(a)	0.32	3170
2013	T77/0001b	HALL CAR PARK TOWN CENTRE	B1(a)	1.18	11840
2013	T80/0033	EP 7 (1) RAMPART WAY TOWN CENTRE	B1(a)	2.41	24000
2013	T80/033	LAND AT EUSTON WAY TOWN CENTRE	B2	0.30	2992
Ward Totals				4.21	42002
Malinslee					
2013	W2010/0564	Southwater Regeneration	B1(a)	0.73	7739
Ward Totals				0.73	7739
Muxton					
2013	T86/0221a	DONNINGTON GRANVILLE ROAD DONNINGTON	B8	1.24	12430
2013	T86/0221b	DONN BUS PARK 2 DONNINGTON	B8	3.26	32600
2013	T86/0221c	LAND SOUTH OF GRANVILLE ROAD DONNINGTON	B1(a)	3.29	24063
2013	T86/0221d	LAND NORTH OF GRANVILLE ROAD DONNINGTON	B8	15.71	157100
Ward Totals				23.51	226193
The Nedge					
2013	T85/0214a	TELFORD SC & TECH PK NEDGE HILL EAST	B2	2.93	148900
2013	T85/0214b	TELFORD SC & TECH PK NEDGE HILL W (MITAC)	B2	6.54	24271
2013	T85/0214c	TELFORD SC & TECH PK NEDGE HILL WEST (PT)	B2	14.89	63630
Ward Totals				24.36	236801
Borough Totals				177.66	1363693

Appendix 6b - Other Employment Land Not Started 2012/13

Year	Application No	Address	Change	Use Class	Hectares	Sq M
2013	W2010/0378	Novascope House Beaumaris Road Newport	DEM	B1(c)	0.09	-350
2013	W2011/0577	The Old Printing Works Bath Road Ironbridge	DEM	B2	0.17	-108
2013	W2011/0853	Parklands House Audley Avenue Newport	DEM	B1(c)	1.37	-325
2013	W2011/0853	Parklands House Audley Avenue Newport	REP	B1(c)	1.37	2931
2013	W2011/0878	Faccenda Factory Hortonwood 60 Hortonwood	EXT	B2	4.88	13489
2013	W2012/0170	Agropharm Ltd, B5061 Overley Hill Overley	EXT	B2	2.83	157.6
2013	W2012/0191	1 Furnace Lane Trench	CU	B1(a)	0.04	-44
2013	W2012/0355	W Davies & Sons Mill Lane Kynnersley	DEM	B2	0.25	-280
2013	W2012/0916	Land adjacent 17 Water Lane Newport	DEM	B8	0.24	-683
Ward Totals					11.24	14787.6
Apley Castle						
2013	W2011/0374	Wappenshall Wharf Wappenshall	CU	B8	0.37	-479.5
Ward Totals					0.37	-479.5
Arleston						
2013	W2012/0752	Wylie and Holland Motor Cycles 146 Watling Street Wellington	DEM	B1(a)	0.48	-98
2013	W2012/0752	Wylie and Holland Motor Cycles 146 Watling Street Wellington	DEM	B1(c)	0.48	-195
2013	W2012/0752	Wylie and Holland Motor Cycles 146 Watling Street Wellington	REP	B8	0.48	866
Ward Totals					1.44	573
Brookside						
2013	W2012/0778	Land off, Beaconsfield/Burford Brookside	DEM	B1(a)	2.20	-69
2013	W2012/0778	Land off, Beaconsfield/Burford Brookside	REP	B1(a)	2.20	80
Ward Totals					4.40	11
Church Aston and Lilleshall						

CU - Change of Use EXT - Extension DEM - Demolition REP - Replacement Building MOB - Mobile Unit

Year	Application No	Address	Change	Use Class	Hectares	Sq M
2013	W2008/0886	Land at Newport, Shropshire.	DEM	B1(c)	1.37	-325
2013	W2008/0886	Land at Newport, Shropshire.	REP	B1(c)	1.37	2931
2013	W2008/0886	Land at Newport, Shropshire.	DEM	B1(c)	1.37	-325
2013	W2008/0886	Land at Newport, Shropshire.	REP	B1(c)	1.37	2931
Ward Totals					5.49	5212
Cuckoo Oak						
2013	W2010/0806	The Technical Centre Halesfield 7 Halesfield	CU	B1(a)	1.01	200
2013	W2010/0806	The Technical Centre Halesfield 7 Halesfield	CU	B1(c)	1.01	2740
2013	W2010/0806	The Technical Centre Halesfield 7 Halesfield	CU	B8	1.01	360
2013	W2011/0042	Unit B2, B3 & B4 Halesfield 8 Halesfield	CU	B8	0.35	-665
2013	W2012/0768	Unit 10 Halesfield 9 Halesfield	CU	B2	0.18	0
Ward Totals					3.56	2635
Dawley Magna						
2013	W2012/0201	Units 36-37, Heath Hill Industrial Estate Heath Hill Dawley	CU	B2	0.01	-116
2013	W2013/0017	Unit 5, Holland Court High Street Dawley	CU	B1(a)	0.01	-46
Ward Totals					0.02	-162
Ercall Magna						
2013	W2011/0453	The Quarry Waters Upton	CU	B1(c)	0.37	-255
2013	W2011/0453	The Quarry Waters Upton	CU	B2	0.37	255
2013	W2012/0323	Riverside Stars Lane Cold Hatton Heath	EXT	B1(a)	0.17	183
2013	W2012/0323	Riverside Stars Lane Cold Hatton Heath	CU	B1(c)	0.17	-69
2013	W2013/0022	Roden Nurseries Roden Lane Roden	CU	B8	1.70	1200
Ward Totals					2.78	1314
Hadley and Leegomery						
2013	W2011/0023	Hadley Castle Works Hadley	EXT	B1(a)	12.60	1500
2013	W2011/0456	Unit 10 Trench Lock 2 Trench Lock	CU	B1(c)	1.76	-50

CU - Change of Use EXT - Extension DEM - Demolition REP - Replacement Building MOB - Mobile Unit

Year	Application No	Address	Change	Use Class	Hectares	Sq M
2013	W2012/0443	Bohle UK Ltd Hortonwood 30 Hortonwood	EXT	B8	0.51	1000
2013	W2012/0583	Blockleys Bricks Ltd Sommerfeld Road Hadley	REP	B1(a)	4.35	89.7
2013	W2012/0583	Blockleys Bricks Ltd Sommerfeld Road Hadley	DEM	B1(a)	4.35	-89.7
2013	W2012/0863	Carter Towers Hadley Park West Hadley	CU	B1(a)	0.01	-102
2013	W2012/0863	Carter Towers Hadley Park West Hadley	CU	B2	0.01	34
2013	W2013/0040	Faccenda Group Hortonwood 60 Hortonwood	EXT	B8	0.40	360
Ward Totals					23.99	2742
Haygate						
2013	W2012/0118	The Glebe Centre Glebe Street Wellington	CU	B1(a)	0.00	-1685
2013	W2012/0118	The Glebe Centre Glebe Street Wellington	CU	B1(a)	0.00	467
2013	W2012/0796	Orchard House Spring Hill Wellington	MOB	B1(a)	0.02	150.7
2013	W2012/0940	Edgbaston House Walker Street Wellington	CU	B1(a)	0.04	-345
Ward Totals					0.06	-1412.3
Ketley and Oakengates						
2013	W2009/0445	Unit 17 Ketley Business Park Waterloo Road, Ketley, Telford, Shropshire.	CU	B1(c)	0.01	-93
2013	W2011/0259	Unit 6 Trench Lock 3 Trench Lock	CU	B1(c)	0.01	-134.5
Ward Totals					0.02	-227.5
Lawley and Overdale						
2013	W2012/0059	Land at Brodie House Central Square Telford Town Centre	DEM	B1(a)	0.75	-600
2013	W2012/0777	Darby House Lawn Central Telford Town Centre	EXT	B1(a)	1.35	11
Ward Totals					2.10	-589
Madeley						
2013	W2005/1289	UNITS A1/A2 COURT WORKS INDUSTRIAL EST TWEEDALE	REP	B2	0.17	460
2013	W2010/0375	Unit D7, Court Works Industrial Estate Bridgnorth Road Tweedale	CU	B8	0.01	-112
2013	W2012/0324	Unit 15, Tweedale Court Tweedale Court Madeley	CU	B1(c)	0.01	-65

CU - Change of Use EXT - Extension DEM - Demolition REP - Replacement Building MOB - Mobile Unit

Year	Application No	Address	Change	Use Class	Hectares	Sq M
Ward Totals					0.19	283
Muxton						
2013	W2012/0658	The Old Granary, Craft Way Wellington Road Muxton	CU	B1(a)	0.00	138
2013	W2012/0669	Maiden's Of Telford Deer Park Court Donnington Wood	EXT	B8	1.40	121
2013	W2012/0939	Granville Site Offices Redhill	EXT	B1(a)	0.06	81
Ward Totals					1.46	340
Newport South						
2013	W2009/0312	Parkland House & Classic Furniture Audley Avenue Newport	DEM	B1(a)	2.92	-279
2013	W2009/0312	Parkland House & Classic Furniture Audley Avenue Newport	DEM	B1(c)	2.92	-325
2013	W2009/0312	Parkland House & Classic Furniture Audley Avenue Newport	REP	B1(c)	2.92	2931
2013	W2009/0312	Parkland House & Classic Furniture Audley Avenue Newport	REP	B2	2.92	2931
2013	W2009/0312	Parkland House & Classic Furniture Audley Avenue Newport	DEM	B8	2.92	-6317
2013	W92/0970	Newport Silo Audley Avenue Newport	DEM	B8	2.91	-1340
Ward Totals					17.53	-2399
Newport West						
2013	W2009/0693	Beagles Joinery Novoscope House Beaumaris Road, Newport, Shropshire.	CU	B1(c)	0.09	-444
2013	W2012/0917	Land adjacent 17 Water Lane Newport	DEM	B8	0.24	-683
2013	W2012/1014	6 Midgley Court High Street Newport	CU	B1(a)	0.02	-177
Ward Totals					0.35	-1304
The Nedge						
2013	W2007/1262	Peter Grant Papers Ltd Stafford Park 12 Stafford Park	EXT	B8	2.20	783
2013	W2008/0812	Magna Foods Stafford Park, Telford, Shropshire.	REP	B2	0.11	65
2013	W2008/0812	Magna Foods Stafford Park, Telford, Shropshire.	MOB	B2	0.11	-60
2013	W2008/1319	Unit G Stafford Park 15 Stafford Park	CU	B2	0.71	1790
2013	W2008/1319	Unit G Stafford Park 15 Stafford Park	DEM	B2	0.71	-2958
2013	W2008/1319	Unit G Stafford Park 15 Stafford Park	CU	B2	0.71	-1790

CU - Change of Use EXT - Extension DEM - Demolition REP - Replacement Building MOB - Mobile Unit

Year	Application No	Address	Change	Use Class	Hectares	Sq M
2013	W2009/0225	Land at Stafford Park 7 Stafford Park	EXT	B8	0.26	1280
2013	W2009/0439	Magna House Stafford Park 9 Stafford Park, Telford, Shropshire.	EXT	B2	2.56	145
2013	W2010/0626	Kendall Holdings Ltd Stafford Park 6 Stafford Park	REP	B1(a)	2.00	1100
2013	W2010/0626	Kendall Holdings Ltd Stafford Park 6 Stafford Park	DEM	B1(a)	2.00	-280
2013	W2012/0094	Ace House Stafford Park 6 Stafford Park	CU	B2	0.60	2436
2013	W2012/0094	Ace House Stafford Park 6 Stafford Park	CU	B8	0.60	-2436
2013	W2013/0161	Unit C2 Stafford Park 4 Stafford Park	CU	B8	0.30	459.8
Ward Totals					12.88	534.8
Wrockwardine						
2013	W2010/0323	Agropharm Ltd Overley Hill Overley	EXT	B2	2.83	239
2013	W2011/0026	Berwick House The Farm Long Lane	CU	B8	24.60	24.6
2013	W2012/0672	Upper Coalmoor Farm Moreton Coppice Coalmoor	REP	B1(a)	0.03	379
Ward Totals					27.46	642.6
Wrockwardine Wood and Trench						
2013	W2012/0581	Unit D3 Hortonwood 10 Hortonwood	CU	B8	0.04	-370
2013	W2012/0683	Unit A7 Hortonwood 10 Hortonwood	CU	B1(a)	0.04	44
2013	W2012/0683	Unit A7 Hortonwood 10 Hortonwood	CU	B2	0.04	179
2013	W2012/0683	Unit A7 Hortonwood 10 Hortonwood	CU	B8	0.04	179
2013	W2013/0095	Euro Films Ltd, Units B1 & B2 Hortonwood 7 Hortonwood	EXT	B2	0.14	0
Ward Totals					0.30	32
Borough Totals					115.63	22533.7

CU - Change of Use EXT - Extension DEM - Demolition REP - Replacement Building MOB - Mobile Unit

Appendix 6c - Other Non-residential Land Not Started 2012/13

Year	Application No	Address	Change	Use Class	Hectares	Sq M
2013	W2010/0053	27 High Street Hadley	CU	A1	0.05	-22.5
2013	W2010/0558	Stone House Shifnal Road Priorslee	EXT	C1	0.15	82
2013	W2011/0157	Gower Street Youth Club Gower Street St Georges	CU	D1	0.50	-400
2013	W2011/0170	The White Horse Inn Heath Hill Dawley	DEM	A4	0.26	-81
2013	W2011/0735	Audley Court Audley Avenue Newport	EXT	C2	1.33	165
2013	W2011/0853	Parklands House Audley Avenue Newport	DEM	Other	1.37	-325
2013	W2011/0853	Parklands House Audley Avenue Newport	REP	SG	1.37	413
2013	W2011/0936	Former Tank Depot Haybrook, Halesfield 9 Halesfield	NEW	SG	0.24	300
2013	W2012/0191	1 Furnace Lane Trench	CU	C3	0.04	44
2013	W2012/0385	Unit 3 125 King Street Wellington	CU	A1	0.04	238
2013	W2012/0385	Unit 3 125 King Street Wellington	CU	SG	0.04	-238
2013	W2012/0916	Land adjacent 17 Water Lane Newport	NEW	C3	0.24	0
Ward Totals					5.63	175.5
Apley Castle						
2013	W2011/0374	Wappenshall Wharf Wappenshall	CU	D1	0.37	479.5
Ward Totals					0.37	479.5
Arleston						
2013	W2012/0752	Wylie and Holland Motor Cycles 146 Watling Street Wellington	DEM	A1	0.48	-12
2013	W2012/0829	Land at Wrekin Retail Park Whitchurch Drive Arleston	NEW	A1	4.26	118
2013	W2012/0829	Land at Wrekin Retail Park Whitchurch Drive Arleston	NEW	A3	4.26	150
Ward Totals					9.00	256
Church Aston and Lilleshall						
2013	W2005/1533	LAND OFF BARRACK LANE LILLESHALL	NEW	SG	0.45	30

CU - Change of Use EXT - Extension DEM - Demolition REP - Replacement Building MOB - Mobile Unit

Year	Application No	Address	Change	Use Class	Hectares	Sq M
2013	W2008/0886	Land at Newport, Shropshire.	DEM	Other	1.37	-325
2013	W2008/0886	Land at Newport, Shropshire.	DEM	Other	1.37	-325
2013	W2008/0886	Land at Newport, Shropshire.	REP	SG	1.37	413
2013	W2008/0886	Land at Newport, Shropshire.	REP	SG	1.37	413
2013	W2009/0161	Land at Moor Farm Kynnersley Drive, Lilleshall, Shropshire.	CU	C1	0.10	-126
2013	W2009/0161	Land at Moor Farm Kynnersley Drive, Lilleshall, Shropshire.	CU	Other	0.10	126
2013	W2009/0948	Land off A41 Newport, Shropshire.	NEW	A3	2.90	150
2013	W2009/0948	Land off A41 Newport, Shropshire.	NEW	C1	2.90	1242
2013	W2009/0948	Land off A41 Newport, Shropshire.	NEW	Other	2.90	431
2013	W2012/0859	Land off A41/A518 Roundabout Newport	NEW	A3	2.90	150.5
2013	W2012/0859	Land off A41/A518 Roundabout Newport	NEW	C1	2.90	1242
2013	W2012/0859	Land off A41/A518 Roundabout Newport	NEW	SG	2.90	430.6

Ward Totals

23.54 3852.1

College

2013	W2009/0067	Land at 125 King Street Wellington	DEM	SG	0.19	730
2013	W2009/0283	Lord Nelson Hotel 11 Park Street, Wellington, Telford, Shropshire.	EXT	C1	0.11	400
2013	W2010/0097	27-31 High Street Wellington	DEM	A1	0.08	-2250

Ward Totals

0.38 -1120

Cuckoo Oak

2013	W2010/0786	Telford Hotel & Golf Resort Great Hay Drive Sutton Hill	EXT	C1	57.86	1750
2013	W2010/0806	The Technical Centre Halesfield 7 Halesfield	CU	D1	1.01	-3300
2013	W2010/0806		CU	D1	0.00	-3300
2013	W2011/0042	Unit B2, B3 & B4 Halesfield 8 Halesfield	CU	SG	0.35	665
2013	W2011/0042		CU	SG	0.00	665
2013	W2012/0768	Unit 10 Halesfield 9 Halesfield	CU	SG	0.18	0

Ward Totals

59.40 -3520

CU - Change of Use EXT - Extension DEM - Demolition REP - Replacement Building MOB - Mobile Unit

Year	Application No	Address	Change	Use Class	Hectares	Sq M
Dawley Magna						
2013	W2012/0201	Units 36-37, Heath Hill Industrial Estate Heath Hill Dawley	CU	D2	0.01	116
2013	W2012/0867	40 High Street Dawley	CU	A1	0.01	-13.5
2013	W2013/0017	Unit 5, Holland Court High Street Dawley	CU	C3	0.01	46
Ward Totals					0.03	148.5
Donnington						
2013	W2010/0509	ASDA ST. GEORGES ROAD Donnington	NEW	A1	3.56	0
2013	W2011/0803	72, 72B Furnace Lane Trench	DEM	A1	0.03	-22
2013	W2011/0803	72, 72B Furnace Lane Trench	REP	A1	0.03	65
2013	W2013/0118	Inchcape Trench Road Donnington	CU	A1	0.51	1089.8
2013	W2013/0118	Inchcape Trench Road Donnington	CU	SG	0.51	-1089.8
Ward Totals					4.64	43
Edgmond						
2013	W2008/0756	Sunnyside Edgmond	CU	Other	0.11	-100
2013	W2009/0899	Bridge Farm Adeney Road Edgmond	CU	D1	0.01	210
2013	W2009/0899	Bridge Farm Adeney Road Edgmond	CU	Other	0.01	-210
Ward Totals					0.14	-100
Ercall						
2013	W2012/0789	Red Lion Service Station Holyhead Road Wellington	EXT	A1	0.10	43
Ward Totals					0.10	43
Ercall Magna						
2013	W2013/0022	Roden Nurseries Roden Lane Roden	DEM	SG	1.70	-1200
Ward Totals					1.70	-1200
Hadley and Leegomery						
2013	W2011/0456	Unit 10 Trench Lock 2 Trench Lock	CU	SG	1.76	50

CU - Change of Use EXT - Extension DEM - Demolition REP - Replacement Building MOB - Mobile Unit

Year	Application No	Address	Change	Use Class	Hectares	Sq M
2013	W2011/0474	40 Castle Street Hadley	CU	A5	0.09	36
2013	W2012/0165	Land off Hadley Park Roundabout Hadley Park	NEW	A4	0.58	283
2013	W2012/0219	8 High Street Hadley	CU	D1	0.01	77
2013	W2012/0219	8 High Street Hadley	CU	SG	0.01	-77
2013	W2012/0640	Greenhous Group Ltd Trench Lock Hadley	NEW	SG	0.00	802
2013	W2012/0863	Carter Towers Hadley Park West Hadley	CU	A3	0.01	34
2013	W2012/0863	Carter Towers Hadley Park West Hadley	CU	A5	0.01	34
2013	W2013/0011	40 Castle Street Hadley	EXT	A5	0.10	30
Ward Totals					2.57	1269
Haygate						
2013	W2008/0522	1 Walker Street Wellington	CU	A1	0.02	-81
2013	W2008/0522	1 Walker Street Wellington	CU	C3	0.02	81
2013	W2012/0118	The Glebe Centre Glebe Street Wellington	CU	A1	0.00	190
2013	W2012/0118	The Glebe Centre Glebe Street Wellington	CU	A2	0.00	467
2013	W2012/0118	The Glebe Centre Glebe Street Wellington	CU	A3	0.00	95
2013	W2012/0118	The Glebe Centre Glebe Street Wellington	CU	D1	0.00	467
Ward Totals					0.05	1219
Ironbridge Gorge						
2013	W2011/0239	15 Jockey Bank Ironbridge	CU	A4	0.06	-120.5
2013	W2013/0050	Tea Rooms 17 High Street Coalport	CU	A3	0.05	-56
2013	W2013/0050	Tea Rooms 17 High Street Coalport	CU	C1	0.05	56
Ward Totals					0.16	-120.5
Ketley and Oakengates						
2013	W2006/0463	LAND TO THE NORTH OF, HOLYHEAD ROAD KETLEY Hadley	NEW	A1	2.81	3770
2013	W2006/0463	LAND TO THE NORTH OF, HOLYHEAD ROAD KETLEY Hadley	NEW	A1	2.81	130
2013	W2007/0327	Claddagh Hotel Lion Street Oakengates	EXT	C1	0.03	243

CU - Change of Use EXT - Extension DEM - Demolition REP - Replacement Building MOB - Mobile Unit

Year	Application No	Address	Change	Use Class	Hectares	Sq M
2013	W2008/1193	7 Oxford Street Oakengates	CU	A1	0.01	146
2013	W2008/1193	7 Oxford Street Oakengates	CU	A2	0.01	-146
2013	W2009/0445	Unit 17 Ketley Business Park Waterloo Road, Ketley, Telford, Shropshire.	CU	A3	0.01	93
2013	W2011/0259	Unit 6 Trench Lock 3 Trench Lock	CU	A1	0.01	134.5
2013	W2012/0275	Oakengates United Church Stafford Road Oakengates	EXT	D1	0.08	40.3
2013	W2012/1019	CO-OP Food Store Limes Walk Oakengates	CU	A1	0.10	508
2013	W2012/1019	CO-OP Food Store Limes Walk Oakengates	CU	A1	0.10	-973
2013	W2012/1019	CO-OP Food Store Limes Walk Oakengates	CU	A1	0.10	465
Ward Totals					6.07	4410.8

Lawley and Overdale

2013	W2009/0314	Unit 4 & Unit 5 Hazeldine House Grange Central, Telford Town Centre, Telford, Shropshire.	CU	A2	0.02	-219
2013	W2009/0314	Unit 4 & Unit 5 Hazeldine House Grange Central, Telford Town Centre, Telford, Shropshire.	CU	Other	0.02	219
2013	W2010/0170	197 Dean Street Telford Town Centre	CU	A1	0.00	-46
2013	W2010/0170	197 Dean Street Telford Town Centre	CU	A2	0.00	46
2013	W2010/0171	199 Dean Street Telford Town Centre	CU	A1	0.01	-65
2013	W2010/0171	199 Dean Street Telford Town Centre	CU	A5	0.01	65
2013	W2010/0627	Ironstone Square Lawley	NEW	D1	2.44	1500
2013	W2011/0151	Unit 12 Telford Forge Retail Park Old Park	MEZ	A1	0.11	199.5
2013	W2011/0168	Premier Inn Euston Way Telford Town Centre	EXT	C1	0.66	783
2013	W2012/0022	Ironstone Square Lawley	NEW	A3	0.49	315
2013	W2012/0022	Ironstone Square Lawley	NEW	C1	0.49	2513
2013	W2012/0059	Land at Brodie House Central Square Telford Town Centre	NEW	A1	0.75	2212.25
2013	W2012/0059	Land at Brodie House Central Square Telford Town Centre	DEM	A1	0.75	-600
2013	W2012/0059	Land at Brodie House Central Square Telford Town Centre	DEM	A2	0.75	-600
2013	W2012/0059	Land at Brodie House Central Square Telford Town Centre	NEW	A3	0.75	2212.25
2013	W2012/0059	Land at Brodie House Central Square Telford Town Centre	NEW	A4	0.75	2212.25

CU - Change of Use EXT - Extension DEM - Demolition REP - Replacement Building MOB - Mobile Unit

Year	Application No	Address	Change	Use Class	Hectares	Sq M
2013	W2012/0059	Land at Brodie House Central Square Telford Town Centre	NEW	A5	0.75	2212.25
2013	W2012/0059	Land at Brodie House Central Square Telford Town Centre	NEW	D2	0.75	7126
2013	W2013/0052	Lawley Medical Centre, Birchfield House Farriers Green Lawley Bank	EXT	D1	0.43	86
Ward Totals					9.93	20171.5
Madeley						
2013	W2010/0375	Unit D7, Court Works Industrial Estate Bridgnorth Road Tweedale	CU	D2	0.01	112
2013	W2012/0324	Unit 15, Tweedale Court Tweedale Court Madeley	CU	A1	0.01	65
2013	W2012/0498	Land off Parkway Madeley	NEW	A1	1.00	124.7
2013	W2012/0498	Land off Parkway Madeley	NEW	A3	1.00	260
2013	W2012/0498	Land off Parkway Madeley	NEW	A5	1.00	260
2013	W2012/0498	Land off Parkway Madeley	NEW	D1	1.00	1657.2
2013	W2013/0102	Land off Parkway Madeley Court Madeley	NEW	A1	0.62	1419
2013	W2013/0124	Telford Ski Centre Court Road Madeley	EXT	D2	0.81	162
Ward Totals					5.45	4059.9
Malinslee						
2013	W2010/0564	Southwater Regeneration Telford Town Centre	NEW	A1	0.73	156.25
2013	W2010/0564	Southwater Regeneration Telford Town Centre	NEW	A2	0.73	156.25
2013	W2010/0564	Southwater Regeneration Telford Town Centre	NEW	A3	0.73	156.25
2013	W2010/0564	Southwater Regeneration Telford Town Centre	NEW	A4	0.73	156.25
2013	W2012/0849	Telford Town Park Visitor Centre Telford Town Park, Hinkshay Road Telford Town Centre	CU	D2	0.32	0
2013	W2013/0103	Telford Town Park Hinkshay Road Telford Town Centre	NEW	D2	0.07	700
2013	W2013/0111	Telford Town Park Hinkshay Road Telford Town Centre	NEW	D2	0.35	3500
Ward Totals					3.66	4825
Muxton						
2013	W2012/0936	Shropshire Golf Centre and Driving Range Muxton Lane Muxton	EXT	A3	0.81	14
2013	W2012/0936	Shropshire Golf Centre and Driving Range Muxton Lane Muxton	EXT	C1	0.81	2048

CU - Change of Use EXT - Extension DEM - Demolition REP - Replacement Building MOB - Mobile Unit

Year	Application No	Address	Change	Use Class	Hectares	Sq M
2013	W2012/0936	Shropshire Golf Centre and Driving Range Muxton Lane Muxton	EXT	D2	0.81	958
Ward Totals					2.43	3020
Newport South						
2013	W2008/0934	Land adjacent to A41 Newport	NEW	C2	4.87	9196
2013	W2008/0934	Land adjacent to Newport, Shropshire.	NEW	C2	4.87	9196
2013	W2008/0934	Land adjacent to Newport, Shropshire.	NEW	C2	4.87	9196
2013	W2009/0312	Parkland House & Classic Furniture Audley Avenue Newport	REP	A1	2.92	3252
2013	W2009/0312	Parkland House & Classic Furniture Audley Avenue Newport	REP	Other	2.92	413
2013	W2009/0312	Parkland House & Classic Furniture Audley Avenue Newport	DEM	Other	2.92	-325
Ward Totals					23.38	30928
Newport West						
2013	W2009/0693	Beagles Joinery Novoscope House Beaumaris Road, Newport, Shropshire.	CU	D2	0.09	444
2013	W2010/0210	43D Audley Road Newport	EXT	D1	0.05	72
2013	W2011/0354	23 High Street Newport	CU	A1	0.15	70
2013	W2011/0354	23 High Street Newport	CU	SG	0.15	-70
2013	W2012/1014	6 Midgley Court High Street Newport	CU	C3	0.02	0
2013	W2013/0061	Adams Grammar School High Street Newport	EXT	D1	2.96	210
Ward Totals					3.42	726
Park						
2013	W2012/0603	The Priory Nursing Home Spring Hill Wellington	EXT	C2	0.44	237
Ward Totals					0.44	237
Priorslee						
2013	W2012/0713	Priorslee Primary Academy Priorslee Avenue Priorslee	EXT	D1	1.49	678
2013	W2012/0953	Priorslee Medical Practice Priorslee Avenue Priorslee	EXT	D1	0.01	58.5
Ward Totals					1.50	736.5

CU - Change of Use EXT - Extension DEM - Demolition REP - Replacement Building MOB - Mobile Unit

Year	Application No	Address	Change	Use Class	Hectares	Sq M
St. Georges						
2013	W2012/0951	The Fountain Inn New Road Wrockwardine Wood	CU	A4	0.04	-292
Ward Totals					0.04	-292
The Nedge						
2013	W2009/0326	Randlay Centre Randlay Community Centre Randlay, Telford, Shropshire.	NEW	C2	0.92	3159
2013	W2013/0161	Unit C2 Stafford Park 4 Stafford Park	CU	A1	0.30	-459.8
Ward Totals					1.22	2699.2
Wrockwardine						
2013	W2012/0912	Orchard Field The Mount Guest House Dawley Road, Lawley, Telford, Shropshire.	MOB	C1	0.19	3200
2013	W2013/0018	St Lawrence Church Church Lane Little Wenlock	EXT	D1	0.27	1
Ward Totals					0.46	3201
Wrockwardine Wood and Trench						
2013	W2010/0702	120 Trench Road Trench	CU	A1	0.02	-59
2013	W2010/0702	120 Trench Road Trench	CU	A5	0.02	59
2013	W2011/0264	Duke of York Trench Road Trench	EXT	A4	0.24	84
2013	W2011/0655	Land of the Former Youth Club Furnace Lane Trench	NEW	D1	0.23	312
2013	W2012/0581	Unit D3 Hortonwood 10 Hortonwood	CU	D1	0.04	370
2013	W2012/0683	Unit A7 Hortonwood 10 Hortonwood	CU	SG	0.04	-402
Ward Totals					0.60	364
Borough Totals					166.30	76512

CU - Change of Use EXT - Extension DEM - Demolition REP - Replacement Building MOB - Mobile Unit