

# Strategic Education Partnership Board Newsletter

Issue 3: September 2022

## Welcome to our Strategic Education Partnership Board newsletter

*Keeping you up to date with the latest news and information from the partnership board.*



## Visit the Strategic Education Partnership Board Webpage

The webpage stores all of our information in one accessible place so that our key stakeholders and partners (you!) can keep up to date with our developments. **Visit it now at <https://www.telford.gov.uk/TESPB>**

## CALL TO BOARD MEMBERS: Membership Nominations

Over the next week you will all receive an email requesting confirmation of your continued membership of the Strategic Partnership with details of dates and times of the 3 meetings further planned for 2022-23.

**The next Strategic Partnership Board will take place on 17 October at Addenbrooke House, Telford from 2.00 - 4.00pm.**

**We are very excited to announce that Gill Eatough will be our new chair for the Strategic Partnership meetings going forward.**

## Updates from the board meeting held on 22 June 2022

In our June meeting we had the pleasure of being joined by Dr Sue Morris King, Senior HMI, who provided a comprehensive Ofsted Update to our attendees.

Dr King spoke about the **annual Ofsted conversation meetings** which take place between local authorities and Ofsted, informing the Board that there had been recent changes to the format of these meetings. Whilst the meetings previously followed a set agenda, following dialogue with The Association of Directors of Children's Services, the format of the agenda for annual meetings is now informed by the individual needs of local areas and Authorities.

Dr King shared a **general Ofsted update** focussing on deferrals, recovery, curriculum adaptations, weaker readers in secondary schools, SEND, sexual abuse review and emerging good practice in whole school approaches. This content and supporting resources are available here:

### **Ofsted General Resources - ADD**

A key area raised was the importance of inspectors being able to triangulate documentation and evidence in terms of **pupil voice**. It was acknowledged by the Board that Leaders should be actively seeking the views of all students, including those who may not normally be the most vocal, or those who may be less likely to proactively share their views and feedback.

### **Ofsted Resources and Publications**

Dr King shared other important references and resources for sharing across the broader Partnership:

- [North East, Yorkshire and the Humber region curriculum webinars – YouTube](#)
- [Review of sexual abuse in schools and colleges - GOV.UK \(www.gov.uk\)](#)
- [Securing good attendance and tackling persistent absence - GOV.UK \(www.gov.uk\)](#)
- [SEND: old issues, new issues, next steps - GOV.UK \(www.gov.uk\)](#)
- [Supporting secondary school pupils who are behind with reading - Ofsted: schools and further education & skills \(FES\) \(blog.gov.uk\)](#)
- [Education recovery in schools: spring 2022 - GOV.UK \(www.gov.uk\)](#)



# Strategic Education Partnership Board Newsletter

Edition3 : September 2022

**Darren Knibbs, Director Children's Safeguarding and Family Support** attended the Board and shared an update on the final report of [The Independent Review of Children's Social Care](#)

The report recognises that councils are best placed to keep children and young people safe and to help them thrive, recognising and building on much of the excellent practice already taking place, whilst offering recommendations to tackle some significant challenges.

Particular issues raised within the report include the need to invest further in early help for children and families, provide better support for kinship carers, make sure we have the right homes for children in care and ensuring better futures for those leaving care.



**Following on from publication, Minister Quince outlined three key priorities to improve children's social care:**

- Improve the child protection system so that it keeps children safe from harm as effectively as possible.
- Support families to care for their children so that they can have safe, loving and happy childhoods which sets them up for fulfilling lives
- Ensure that there are right placements for children in the right places so that those who cannot stay with their parents grow up in a safe, stable and loving home.

**The Government's initial response has committed to:**

- Establishing a National implementation Board of sector experts.
- Working with LA's to boost efforts to recruit more foster carers.
- Reframing and refocussing the support social workers receive in early part of their careers
- Joining up data from across the public sector to increase transparency
- Establishing a new Digital and Data Solutions fund to help LA's improve delivery through technology.
- Developing a national children's social care framework.
- Committed funding for family hubs, social workers in schools, designated safeguarding lead supervision programmes.

This report was quickly followed by the publication of a [National review into the tragic murders of Arthur Labinjo-Hughes and Star Hobson](#) which highlights key issues about a lack of triangulation of multiple sources of information.

It was acknowledged that the report highlights challenges with information sharing across partnership agencies and how it is hoped the report will be an impetus for change.

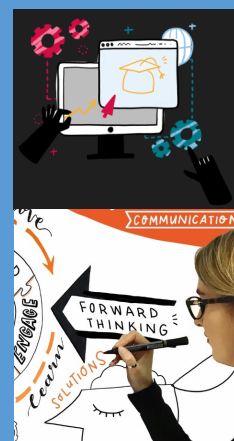
Further updates in respect of both of these reviews will be considered on an ongoing basis by the Board and key updates shared across the Partnership.

## Developing an Education Strategy

*At the June Telford and Wrekin Strategic Partnership Board meeting we had the unique opportunity to be joined by Hannah Williams, Illustrator and Live Scribe Artist from Scribble Inc.*

*Hannah worked with us to visually capture some of our key themes, priorities and aspirations - not just for us as a Partnership but also those which we all share for the children and young people that we collectively have a responsibility for across our borough throughout early years, primary and secondary settings and beyond.*

*The session was focused on Blue-Sky thinking and looked to visually capture what we as a Partnership are looking to achieve in future.*



# Strategic Education Partnership Board Newsletter

Edition 3: September 2022



## Developing an Education Strategy:

You can see above the five key priorities that we as a Partnership are looking to deliver upon: Best Start; Ambition and Engaging Curriculum; Post 16; Diverse and Inclusive; New Skills and Pathways.

The three key questions for discussion were:

- What does the priority mean?
- How can we deliver it?
- What outcomes are we trying to achieve?

The discussions were plentiful and gave us an initial outline as to where we as a partnership are looking to prioritise strategic focus. However, further feedback is required in terms of galvanising our whole education community across the borough. Further work will be planned over the coming months.

# Strategic Education Partnership Board Newsletter

Edition: September 2022

## Who are the Linked Representatives?

Cluster Lead (Central Cluster)	Jane Siddons
Cluster Lead (Newport Cluster)	Christobel Cousins
Cluster Lead (North Cluster)	Claire Whiting
Cluster Lead (South Cluster)	Stephanie Dowley
Cluster Lead (Wellington Cluster)	Mark Davis
Community Academies Trust (CAT)	Philip Hamilton
Early Years	Theresa Ewin
The Haberdashers' Adams' Federation Trust (HAFT)	Lee Hadley
Learning Community Trust (LCT)	Gill Eatough
LA Maintained Schools	Angus Neal
Newport Girls' High School	Michael Scott
Severn Teaching School Alliance	Heather Davis
Severn Teaching School Alliance	Sally Noble
Shrewsbury Diocese	Damian Cunningham
Shrewsbury Diocese	Carol Morgan
Special Schools	Abi Martin
Telford College	Graham Guest
Telford & Wrekin Council	Simon Wellman
Telford & Wrekin Council	Jo Britton
Thomas Telford School and Madeley Academy Trust	Sir Kevin Satchwell

**If you have any questions or feedback relating to the Education Strategic Partnership Board please contact your representative or email [hubprojectteam@telford.gov.uk](mailto:hubprojectteam@telford.gov.uk) or call 01952 385658.**