




This meeting is to talk about the work happening across Telford & Wrekin to support adults with learning disabilities		
Agenda item		Presenter
 	<p>Welcome, apologies and introductions</p> <p>Chair: Julie Noble</p>	<p>Julie opened the meeting, welcomed everyone who was there, noted apologies from those unable to attend and reviewed actions from the previous meeting.</p>
	<p>Beyond Words Campaign – Understanding Behaviour with Compassion</p> <p>Presenter: Mercedeh Fahimivahid (Virtual)</p>	<p>Mercedeh presented the draft STOMP/STAMP awareness campaign aimed at reducing inappropriate psychotropic medication for people with learning disabilities and/or autism.</p> <p>Key points:</p> <ul style="list-style-type: none"> • STOMP/STAMP encourages non-medication based interventions when appropriate. • Emphasis on behaviour as communication, inclusion, early help and compassionate responses. • Importance of co-production with people with lived experience. • Mercedeh confirmed plans to improve signposting, social prescriber involvement, and training for practitioners. <p>Board members raised concerns about:</p> <ul style="list-style-type: none"> ○ unclear support pathways ○ lack of specialist input at GP level ○ gaps in early help and alternatives to medication



Employment - Connect to Work

**Presenter:
Wale Folorunso**

Wally and Rachel provided an overview of the Connect to Work employment support service.

Key points:

Uses IPS (Individual Placement & Support) and SEQF models.

Supports people with learning disabilities, autism, and mental/physical health conditions.

Eligibility includes: working-age adults, right to work, and not engaged with other DWP programmes.

Support includes job coaching, benefits advice, employer liaison, and up to 12 months of post-employment support.

Board members noted:

- Many individuals may need pre-employment or volunteering pathways.
- Importance of reasonable adjustments and employer confidence building.

Activity for All


Presenter Lizzie Higgins/Julie Noble

Lizzie Higgins and Julie Noble provided an update on the new physical activity programme for adults with a learning disability, which is due to commence in April 2026.

Promotional materials, including a flyer and poster are currently in development. SNAC is preparing to manage bookings for all activities via its phone line and email address, with these contact details included on all promotional materials.

A wide range of activities is being planned. Providers have been identified for each activity and costs have been obtained for programmes consisting of ten sessions per activity.

Careful consideration has been given to varying activity times, including mornings, afternoons, evenings and weekends, as well as offering sessions across multiple locations within Telford where possible.

		<p>Further details will be released as soon as possible, and support from Board members and partners to assist with publicity and promotion was welcomed.</p>
	<p>Healthy Lifestyle Service & Healthy Weight Strategy</p> <p>Presenter: Lizzie Higgins</p>	<p>Lizzie Higgins provided an update on the Healthy Weight and Lifestyle programme, highlighting a strategic focus on improving access to healthy lifestyle support for adults with learning disabilities and/or autism.</p> <p>Key priorities include improving service accessibility, increasing workforce skills, and addressing barriers to engagement.</p> <p>A multi-agency training session was delivered in partnership with LD Specialist Nurses, the Autism Hub and other partners, with 23 professionals trained on eating challenges.</p> <p>Co-production work with the Autism Hub and PODS has informed future actions, including the development of practical resources and a toolkit.</p> <p>Board Members raised concerns about difficulties accessing appropriate support, the need for tailored interventions, limited GP engagement, and the importance of involving support staff and care providers in training. Challenges linked to food routines and sensory needs were also highlighted.</p> <p>Next steps include increasing referrals into services, progressing the development of a toolkit for individuals and support workers, exploring funding opportunities for further training, and continuing work to improve information, communication and inclusivity across healthy lifestyle services</p>



**Adult Social Care
Commissioning Plan
2026/27**

Julie Noble provided an update on adult social care commissioning and accommodation planning. This included progress on the new care and support framework, accommodation developments, and work to improve information, communication and forward planning for supported housing.

The current care and support framework ends in March 2026, with a new framework in development. This will cover community activity support, standard support, specialist and forensic support, and residential and respite services.

Reviews of both internal and external day opportunities and supported living provision are ongoing.





Accommodation

There are currently 21 supported housing schemes in Telford & Wrekin. Work is progressing on a new development of six bungalows in Madeley, including one bungalow that will be used for respite. This will create more local options for people who need supported accommodation.

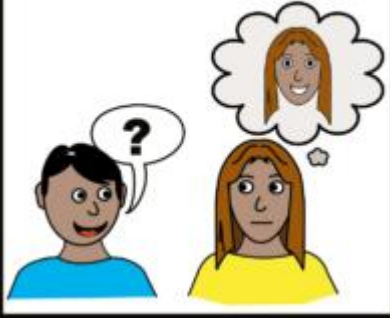
The Board recognised that it can be difficult to plan for future housing needs, especially for families whose loved ones are not yet known to adult social care. This makes it harder to understand how many homes will be needed in the future.

Work is underway to make housing information clearer, easier to understand and more accessible. Parents and carers will be involved in reviewing and co-producing information, so it better explains what support and housing options are available, who is eligible, and how referrals work.

The Board also discussed the importance of having earlier conversations with families about future housing needs, so there is more time to plan and reduce uncertainty. Improving information and data will help with future planning and focus groups or smaller discussion groups may be used to look at local issues, including

		housing options in areas such as Newport.
	<p>Telford Voices update</p>	<p>The Board talked about the current pause in Telford Voices following a recent bereavement. Members recognised how important it is to continue listening to the views and experiences of people with learning disabilities and their families during this time.</p> <p>While Telford Voices is not meeting, the Board discussed other ways to hear from people, such as reaching out to colleges and community groups where people already spend time. There was also discussion about whether a peer advocacy service, where people with learning disabilities support others to have their say, could be explored for the future.</p> <p>The Board agreed it is important that people with learning disabilities and their families continue to have opportunities to share their views and help shape services</p>
	<p>Forward plan</p>	<p>The Board to agree 3 priorities to work on this year, please bring any suggestions to the meeting thinking about:</p> <ul style="list-style-type: none"> • What is working well • What is not working well • What could be changed to make it better

ask questions



Any Other Business

Items raised by members

Future Agenda Suggestions

come to every session

week 1	✓
week 2	✓
week 3	✓
week 4	✓
week 5	✓
week 6	✓

Date of next partnership meeting:

- 29 April from 11am – 1pm in the Sunnycroft room at Darby House.
- 29 July from 11am – 1pm in the Sunnycroft room at Darby House.
- 28 October from 11am – 1pm in the Sunnycroft room at Darby House