

# Household Recycling Centres (HRC)

✓ YES PLEASE



✓ Bric-a-brac



✓ Tyres



✓ Textiles



✓ Chemicals



✓ Electrical appliances



✓ Engine oil



✓ Fluorescent tubes



✓ Fridges & freezers



✓ Mobile phones



✓ Paint



✓ Furniture



✓ Gas bottles



✓ Plasterboard



✓ Scrap metal



✓ Shoes



✓ Soil



✓ Cartons



✓ Toys



✓ Wood



✓ General refuse



✓ TVs & computers



✓ Used cooking oil



✓ Car batteries

**Hortonwood 50 TF1 7AA**  
**Halesfield 1\* TF7 4LN**

**OPEN 7 DAYS A WEEK, 9AM-5PM, 362 DAYS A YEAR.**  
(Closed Christmas Day, Boxing Day & New Year's Day)

\*some containers only accessible by steps

For details of e-permits, vehicle restrictions and site maps to help you arrange your boot for the easiest visit, go to:  
[www.telford.gov.uk/hrc](http://www.telford.gov.uk/hrc)

**Can't see the item you're looking for?**

Visit [www.telford.gov.uk/recycling](http://www.telford.gov.uk/recycling) for the A to Z of recycling

## Choose to reuse

We encourage residents to reduce waste, reuse, repair and donate items to others where possible. Could your items be reused? We do our best to donate items from our HRC and bulky waste service to our charity partners. Speak to site staff on your next visit, together we can make a difference.



**Need a large item collected?**

Visit [www.telford.gov.uk/bulkywaste](http://www.telford.gov.uk/bulkywaste) to see what we can collect.



# What happens once your waste and recycling is collected



Your mixed recycling is collected and taken to a Materials Recovery Facility (MRF) where items are separated and sent for reprocessing into new products.



## Food tins and drink cans

Aluminium and steel cans are separated at the MRF. The aluminium cans are recycled into new products, such as new cans and ready meal packaging, and the steel cans are recycled into steel for cars and building materials.



## Glass bottles and jars

Glass is melted and used to make new bottles and jars.



## Plastic packaging

Plastic bottles can be recycled back into new plastic bottles, fleeces, plastic chairs and tables.



## Paper and card

Paper and card is taken to paper mills where it is recycled into cardboard, newspapers, books and office paper.



## Garden waste

Garden waste is taken to a local composting facility where we turn the waste into compost.



## Food waste

Food waste is taken to an anaerobic digestion facility where gas is generated and fertiliser produced for farmland.



## General waste

Non-recyclable waste is diverted from landfill and sent to an Energy Recovery Facility (ERF) where it is used to generate energy.

## Save time – go online

Many service requests can be done more quickly online by visiting [telford.gov.uk/recycleonline](http://telford.gov.uk/recycleonline)

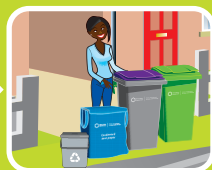
Use the MyTelford app for easy access to report issues and request services. Available on all Android and iOS devices.



# How to use your recycling & waste service



# Your recycling containers



Present your containers for **7am** on your collection day and return them to your property as soon as you can after they have been emptied.

Contents of your blue/purple bag and kitchen caddy go into the wheelie bins



Please fill your purple bag with cans, plastic glass and cartons in your flat or property. Then take your purple bag to your recycling area and tip the contents into the purple top bin if provided

Please fill your blue bag with cardboard and paper in your flat or property. Then take your

blue bag to your recycling area and tip the contents into the blue top bin if provided.

If you have a shared communal bin for your food waste, you can request liners for your kitchen caddy at [www.telford.gov.uk/recycleonline](http://www.telford.gov.uk/recycleonline)

# Your purple containers

✓ YES PLEASE

Please put items directly into the container, **do not** use carrier bags.



food tins & drink cans



✓ Aerosols



✓ Cans



✓ Tins



✓ Foil



plastics



✓ Plastic Food & drink bottles



✓ Cleaning & bathroom bottles



✓ Tubs, trays & pots



mixed glass bottles & jars



✓ Jars



✓ Bottles



food & drink cartons



✓ Food & drink cartons

NEW

## ✗ NO THANKS

- ✗ Cardboard & paper
- ✗ Crisp packets

- ✗ Plastic bags & plastic film
- ✗ Plant pots & trays

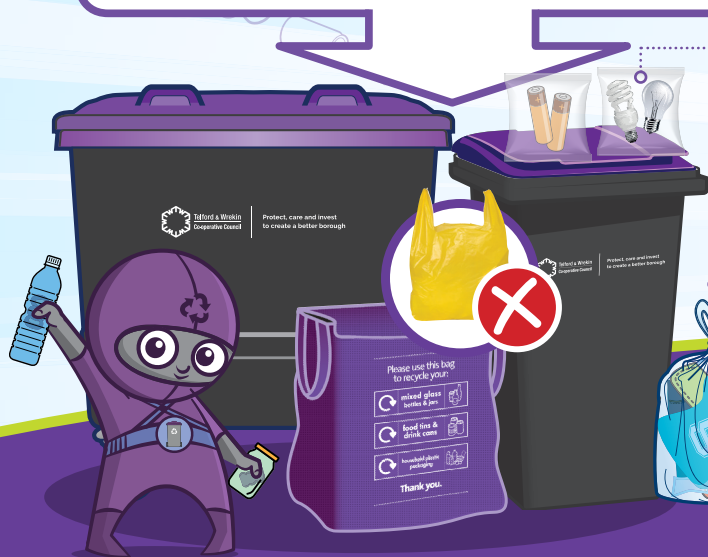
- ✗ Food waste
- ✗ General waste

## Textiles, batteries and bulbs

Recycle your batteries, bulbs and textiles. Place **separately** into clear plastic bags and present on top of your wheelee bin. Please do not tie to bin handles.



**Help us avoid fires** by recycling your batteries safely.



Please use this bag to recycle your:

- mixed glass bottles & jars
- food tins & drink cans
- household plastic packaging

Thank you.

Please **rinse** and **empty** your recycling where appropriate.

# Your blue containers

## ✓ YES PLEASE

Please put items directly into the container, **do not** use carrier bags.



paper



cardboard



✓ Kitchen roll & toilet rolls



✓ Catalogues & directories



✓ Envelopes



✓ Mixed paper, magazines & comics



✓ Delivery boxes



✓ Junk mail



✓ Shredded paper (small amounts)



✓ Newspapers



✓ Food boxes



✓ Paper bags



✓ Stationery

## ✗ NO THANKS

✗ Cardboard take away containers

✗ Cartons

✗ Polystyrene

✗ Plastic bags/film

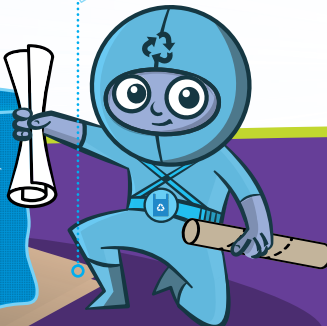
✗ Batteries

Missing containers, or need extra recycling containers?  
Order here  
[www.telford.gov.uk/recycleonline](http://www.telford.gov.uk/recycleonline)

Please do not put your blue bags inside your purple top bin

○ You can present extra card with your blue bag, but it needs to be no bigger than a wheelie bin. Anything larger cannot be loaded safely into the recycling truck.

○ Extra cardboard to be folded flat and secured next to your blue bag.



Please **wrap** shredded paper in newspaper or **weigh down** in your container.

# Your green bin

✓ YES PLEASE



garden waste



✓ Grass cuttings & hedge clippings



✓ Dead flowers & plants



✓ Small branches



✓ Leaves

✗ NO THANKS

- ✗ Food waste
- ✗ Soil & turf
- ✗ Pet bedding
- ✗ Plastic or packaging

# Your silver containers

✓ YES PLEASE



food waste



✓ Cheese & eggs



✓ Bread & pastries



✓ Fruit & veg



✓ Meat & fish



✓ Mouldy or out of date food



✓ Tea & coffee grounds



✓ All uneaten food including plate scrapings

✗ NO THANKS

- ✗ Plastic packaging
- ✗ Oils or fats
- ✗ Liquids
- ✗ Pet mess/litter/bedding
- ✗ Cardboard

Ever thought of home composting?  
More info at [www.telford.gov.uk/compost](http://www.telford.gov.uk/compost)



Haven't used the food waste service yet? Get your caddy at [www.telford.gov.uk/recycleonline](http://www.telford.gov.uk/recycleonline)



You can line your food waste caddy with newspaper, kitchen roll, nothing at all or you can purchase compostable caddy liners which are widely available.

# Your red top bin

✓ YES PLEASE

 household waste



✓ Sanitary items



✓ Nappies



✓ Polystyrene



✓ Crisp packets



✓ Plastic bags



✓ General refuse



✓ Contaminated fast food containers



✓ Plant pots and trays



✓ Wallpaper



✓ Plastic film & plastic wrappers



✓ Used animal bedding



✓ Cat litter



Animal bedding and cat litter **NEED TO BE CONTAINED IN BAGS** in your red top bin to avoid spillages.

Please check your items cannot be recycled before putting them in the red top bin

Please make sure the lid is closed – waste outside the bin won't be collected



Want to receive a weekly email reminder to put your containers out?  
Sign up at [www.telford.gov.uk/bindayfinder](http://www.telford.gov.uk/bindayfinder)  
For more info on recycling visit [www.telford.gov.uk/recycling](http://www.telford.gov.uk/recycling)