

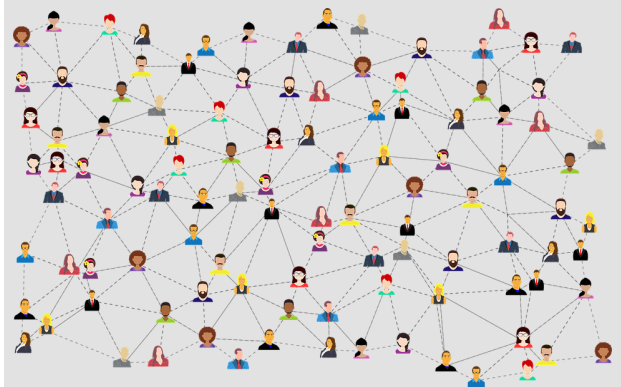
Strategic Education Partnership Board Newsletter

Issue 1: November 2021

Welcome to our first Strategic Education Partnership Board newsletter.

We will produce a newsletter after each full Partnership Board meeting (termly) to keep you up to date with the latest news and information.

The newsletter will also keep you informed on how the Board and the working group are progressing in the delivery of our overarching vision and priorities.



Purpose of the Education Strategic Partnership Board

The Telford Education Strategic Partnership is made up of representatives from Early Years, Academy Trusts, Secondary, Primary and Special schools, the STSA, Diocesan representatives, Post 16 providers and the Local Authority.

The Partnership provides an opportunity for discussion and consultation between key partners within our local area on shared issues and aspirations relating to the education and support of children and young people within the Borough.

There is also a strong focus on strategic policy, common challenges and areas for development. The Partnership provides an opportunity for strategic networking.



If you have any questions or feedback relating to the Education Strategic Partnership Board please email hubprojectteam@telford.gov.uk or call 01952 385658.

Aims of the Education Strategic Partnership:

- To develop a clear and ambitious vision for education settings within Telford and Wrekin - with a focus on local context and place.
- To recognise the talent and expertise across our local education system and to facilitate the effective sharing and dissemination of outstanding practice.
- To bring strategic challenge and collectively build capacity across the borough's education settings to support improvement.
- To identify and co-ordinate area-wide priorities including:
 - a. Early Years
 - b. Transition
 - c. Post 16 provision
 - d. School places
 - e. Vulnerable learners
 - f. SEND provision
 - g. Teacher recruitment and succession planning
- To promote effective communication across the Partnership.
- To develop system leader capacity across all phases to ensure access to high quality support.
- To link the work of the Partnership with other key priorities and to coordinate bids, where appropriate, on behalf of Telford and Wrekin (SSRIB, SIF, WMADCS priorities, Ofsted etc.).
- To be a collective voice for Telford and Wrekin in response to Government consultations, providing evidence to Regional ADCS Groups.

Strategic Education Partnership Board Newsletter

Edition: November 2021

Updates from the Board meeting held on 11th November:

Recruitment of an Independent Chair

Following a review of the Board earlier this year, it is our intention to appoint an Independent Chair, who will support the Partnership to drive our ambitious vision forward.

Operational Review

Membership of the Board has been reviewed and refreshed. It has been agreed the board will now meet termly. A smaller operational working group will meet between full board meetings to drive forward progress of strategic objectives and actions.

Developing a Local Area Dashboard

The Local Authority currently collects a significant amount of data across Education and Skills. In addition, national and regional data is available to benchmark our local performance. The development of a data dashboard will support delivery against our Education Strategic Partnership Board vision.

Sharing and analysis of this data will frame how we plan to understand the impact and difference that we are making and identify any areas where we might look to do things differently.



Developing an overarching Education Strategy

There are currently a range of strategies in existence in Telford & Wrekin, however there is no one overarching Education Strategy. Developing an overarching Education Strategy will articulate our collective vision and identify priority areas informed by local data and intelligence.

Delivery of our Education Strategy will be task for the Partnership and beyond, working in many different combinations to improve outcomes for children and young people. The delivery of collaborative aspirations for our children and young people requires a flexible and adaptive network using different blends of skills and resources.

By far the most important part of the governance model for our Education Strategy will be the combined work of all of these groups and bodies. The role of governance is to bring coordination, oversight and accountability and to ensure that we draw on the resources and powers of a wide range of different contributors.

A draft Education Strategy will be developed by the board informed by the Telford and Wrekin local profile. It will include existing priorities and reference existing strategic documents.



Developing a Communication Strategy

The Education Strategic Partnership Board will refresh it's approach to communications to provide greater visibility of what the board is doing and the difference it is making. Key updates will be included in the Education Noticeboard. A simple website will be developed to post key documents and information

Please speak with your linked representative for further detail about the partnership meeting held on the 11th November.



Strategic Education Partnership Board Newsletter

Edition: November 2021

Who are the Linked Representatives?

Cluster Lead (Central Cluster)	Jane Siddons
Cluster Lead (Newport Cluster)	Christobel Cousins
Cluster Lead (North Cluster)	Claire Whiting
Cluster Lead (South Cluster)	Stephanie Dowley
Cluster Lead (Wellington Cluster)	Mark Davis
Community Academies Trust (CAT)	Philip Hamilton
Early Years	Theresa Ewin
The Haberdashers' Adams' Federation Trust (HAFT)	Lee Hadley
Learning Community Trust (LCT)	Gill Eatough
LA Maintained Schools	Angus Neal
Newport Girls' High School	Michael Scott
Severn Teaching School Alliance	Heather Davis
Severn Teaching School Alliance	Sally Noble
Shrewsbury Diocese	Damian Cunningham
Shrewsbury Diocese	Carol Morgan
Special Schools	Abi Martin
Telford College	Graham Guest
Telford & Wrekin Council	Simon Wellman
Telford & Wrekin Council	Jo Britton
Thomas Telford School and Madeley Academy Trust	Sir Kevin Satchwell

If you have any questions or feedback relating to the Education Strategic Partnership Board please email hubprojectteam@telford.gov.uk or call 01952 385658.