

KEY

PLANNING GUIDANCE

Zone	Development Plan Policy	Development Plan Proposals	Development Control
1	Area suitable for development in accordance with the development plan	Ground movement does not impose any constraints on site development	No Stability report required
2	Area likely to be suitable for development in accordance with the development plan	Ground movement does not impose significant constraints, although some mitigation/stabilisation measures may be required to ensure the stability of the site and surrounding land	An Outline Stability Report would normally be required, prepared by a Competent Person
3	Area likely to be suitable for development in accordance with the development plan provided the developer undertakes appropriate mitigation and stabilisation measures.	Ground movement imposes constraints that would generally require mitigation/stabilisation measures to ensure the stability of the site and surrounding land	A Standard Stability Report would normally be required which <i>may</i> include subsurface investigation and ground movement monitoring and where appropriate details of proposed stabilisation methods, prepared by a Competent Person
4	Area unlikely to be suitable for development in accordance with the development plan unless the developer undertakes appropriate mitigation and stabilisation measures	Ground movement imposes <i>significant</i> constraints that would generally require large-scale mitigation/stabilisation measures to ensure the stability of the site and surrounding land	A Detailed Stability Report would be required including detailed subsurface investigation and long term ground movement (both surface and sub-surface) monitoring and detailed proposed stabilisation methods, prepared by a Competent Person
5	Area very unlikely to be suitable for built development	Ground movement imposes <i>severe</i> constraints that probably could not be overcome by cost effective and environmentally acceptable mitigation or stabilisation measures to ensure the stability of the site and surrounding land	A Detailed Stability Report would be required including detailed subsurface investigation and ground movement (both surface and sub-surface) monitoring and detailed proposed stabilisation methods, prepared by a Competent Person

TELFDORD AND WREKIN BOROUGH BOUNDARY

WORLD HERITAGE SITE BOUNDARY

A	JUN 09	MINOR AMENDMENTS - CLIENT REQUEST	DJW	DHR	JA
0	DEC 08	REPORT	WRG	DHR	JA
Rev	Rev. Date	Purpose of revision	Drawn	Checked	Approved

JACOBS
Hollinswood House, Stafford Court, Stafford Park 1, Telford, UK, TF3 3DD
Tel: +44(0)1952 236500 Fax: +44(0)1952 236501
www.jacobs.com

Client

Telford & Wrekin COUNCIL

Project

IRONBRIDGE GORGE
GEOMORPHOLOGICAL MAPPING

Drawing title

PLANNING GUIDANCE MAP
STUDY AREA
SJ 6901 - SJ 7001

Drawing status

REPORT

Scale1:3000 @ A1DO NOT SCALE

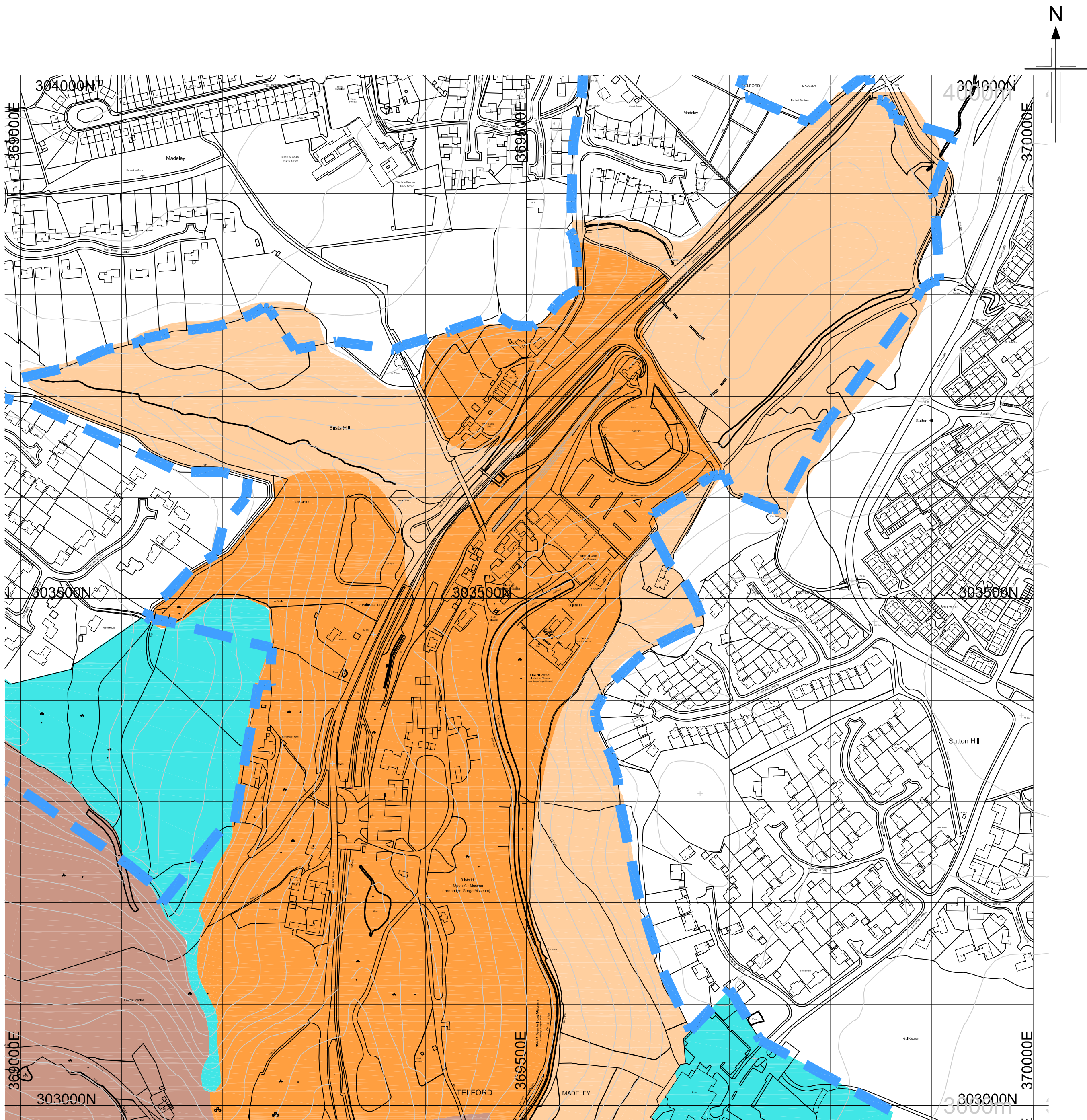
Jacobs No.B1100100

Client no.-

Drawing number1100100/G

RevA

This drawing is not to be used in whole or part other than for the intended purpose and project as defined on this drawing. Refer to the contract for full terms and conditions.



KEY

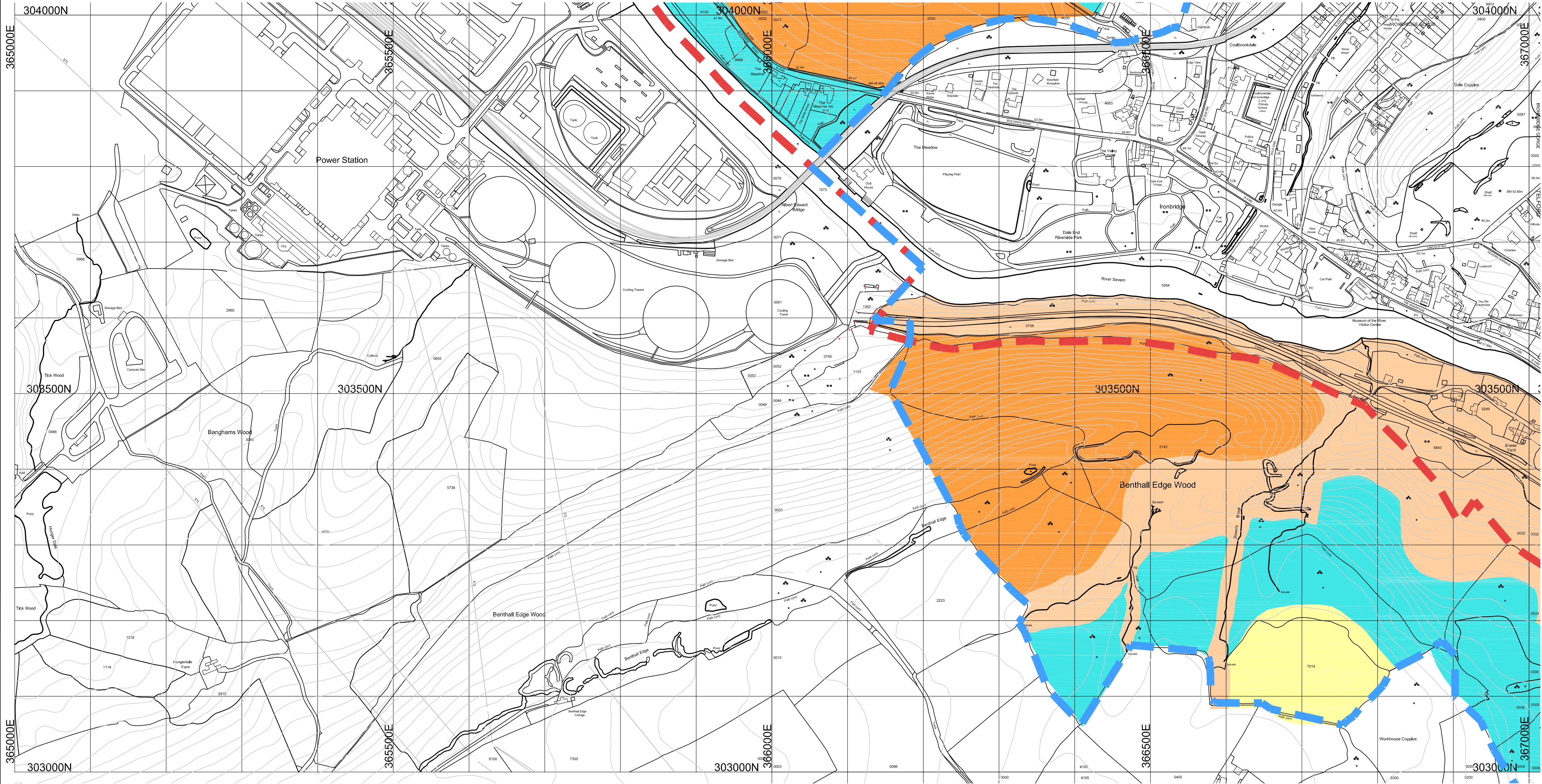
PLANNING GUIDANCE

Zone	Development Plan Policy	Development Plan Proposals	Development Control
1	Area suitable for development in accordance with the development plan	Ground movement does not impose any constraints on site development	No Stability report required
2	Area likely to be suitable for development in accordance with the development plan	Ground movement does not impose significant constraints, although some mitigation/stabilisation measures may be required to ensure the stability of the site and surrounding land	An Outline Stability Report would normally be required, prepared by a Competent Person
3	Area likely to be suitable for development in accordance with the development plan provided the developer undertakes appropriate mitigation and stabilisation measures.	Ground movement imposes constraints that would generally require mitigation/stabilisation measures to ensure the stability of the site and surrounding land	A Standard Stability Report would normally be required which <i>may</i> include subsurface investigation and ground movement monitoring and where appropriate details of proposed stabilisation methods, prepared by a Competent Person
4	Area unlikely to be suitable for development in accordance with the development plan unless the developer undertakes appropriate mitigation and stabilisation measures	Ground movement imposes <i>significant</i> constraints that would generally require large-scale mitigation/stabilisation measures to ensure the stability of the site and surrounding land	A Detailed Stability Report would be required including detailed subsurface investigation and long term ground movement (both surface and sub-surface) monitoring and detailed proposed stabilisation methods, prepared by a Competent Person
5	Area very unlikely to be suitable for built development	Ground movement imposes <i>severe</i> constraints that probably could not be overcome by cost effective and environmentally acceptable mitigation or stabilisation measures to ensure the stability of the site and surrounding land	A Detailed Stability Report would be required including detailed subsurface investigation and ground movement (both surface and sub-surface) monitoring and detailed proposed stabilisation methods, prepared by a Competent Person

TEL FORD AND WREKIN BOROUGH BOUNDARY

WORLD HERITAGE SITE BOUNDARY

A	JUN 09	MINOR AMENDMENTS - CLIENT REQUEST	DJW	DHR	JA
0	DEC 08	REPORT	WRG	DHR	JA
Rev	Rev. Date	Purpose of revision	Drawn	Checked	Approved
<div><div>JACOBS</div><div>Hollinswood House, Stafford Court, Stafford Park 1, Telford, UK, TF3 3DD Tel: +44(0)1952 236500 Fax: +44(0)1952 236501 www.jacobs.com</div></div>					
Client <div><div>Telford & Wrekin</div><div>COUNCIL</div></div>					
Project <div>IRONBRIDGE GORGE GEOMORPHOLOGICAL MAPPING</div>					
Drawing title <div>PLANNING GUIDANCE MAP STUDY AREA SJ 6903</div>					
Drawing status <div>REPORT</div>					
Scale <div>1:3000 @ A1</div>			DO NOT SCALE		
Jacobs No. <div>B1100100</div>					
Client no. <div>-</div>					
Drawing number <div>1100100/G</div>					Rev <div>A</div>
This drawing is not to be used in whole or part other than for the intended purpose and project as defined on this drawing. Refer to the contract for full terms and conditions.					



KEY

PLANNING GUIDANCE

Zone	Development Plan Policy	Development Plan Proposals	Development Control
1	Area suitable for development in accordance with the development plan	Ground movement does not impose any constraints on site development	No Stability report required
2	Area likely to be suitable for development in accordance with the development plan	Ground movement does not impose significant constraints, although some mitigation/stabilisation measures may be required to ensure the stability of the site and surrounding land	An Outline Stability Report would normally be required, prepared by a Competent Person
3	Area likely to be suitable for development in accordance with the development plan provided the developer undertakes appropriate mitigation and stabilisation measures.	Ground movement imposes constraints that would generally require mitigation/stabilisation measures to ensure the stability of the site and surrounding land	A Standard Stability Report would normally be required which <i>may</i> include subsurface investigation and ground movement monitoring and where appropriate details of proposed stabilisation methods, prepared by a Competent Person
4	Area unlikely to be suitable for development in accordance with the development plan unless the developer undertakes appropriate mitigation and stabilisation measures	Ground movement imposes <i>significant</i> constraints that would generally require large-scale mitigation/stabilisation measures to ensure the stability of the site and surrounding land	A Detailed Stability Report would be required including detailed subsurface investigation and long term ground movement (both surface and sub-surface) monitoring and detailed proposed stabilisation methods, prepared by a Competent Person
5	Area very unlikely to be suitable for built development	Ground movement imposes <i>severe</i> constraints that probably could not be overcome by cost effective and environmentally acceptable mitigation or stabilisation measures to ensure the stability of the site and surrounding land	A Detailed Stability Report would be required including detailed subsurface investigation and ground movement (both surface and sub-surface) monitoring and detailed proposed stabilisation methods, prepared by a Competent Person

TELFDORD AND WREKIN BOROUGH BOUNDARY

WORLD HERITAGE SITE BOUNDARY

A	JUN 09	MINOR AMENDMENTS - CLIENT REQUEST	DJW	DHR	JA
0	DEC 08	REPORT	WRG	DHR	JA
Rev	Rev. Date	Purpose of revision	Drawn	Checked	Approved

JACOBS

Hollinwood House, Stafford Court, Stafford Park 1, Telford, UK, TF3 3DD
Tel: +44(0)1952 236500 Fax: +44(0)1952 236501
www.jacobs.com

Client

Telford & Wrekin
COUNCIL

Project

IRONBRIDGE GORGE
GEOMORPHOLOGICAL MAPPING

Drawing title

PLANNING GUIDANCE MAP
STUDY AREA
SJ 6503 - SJ 6603

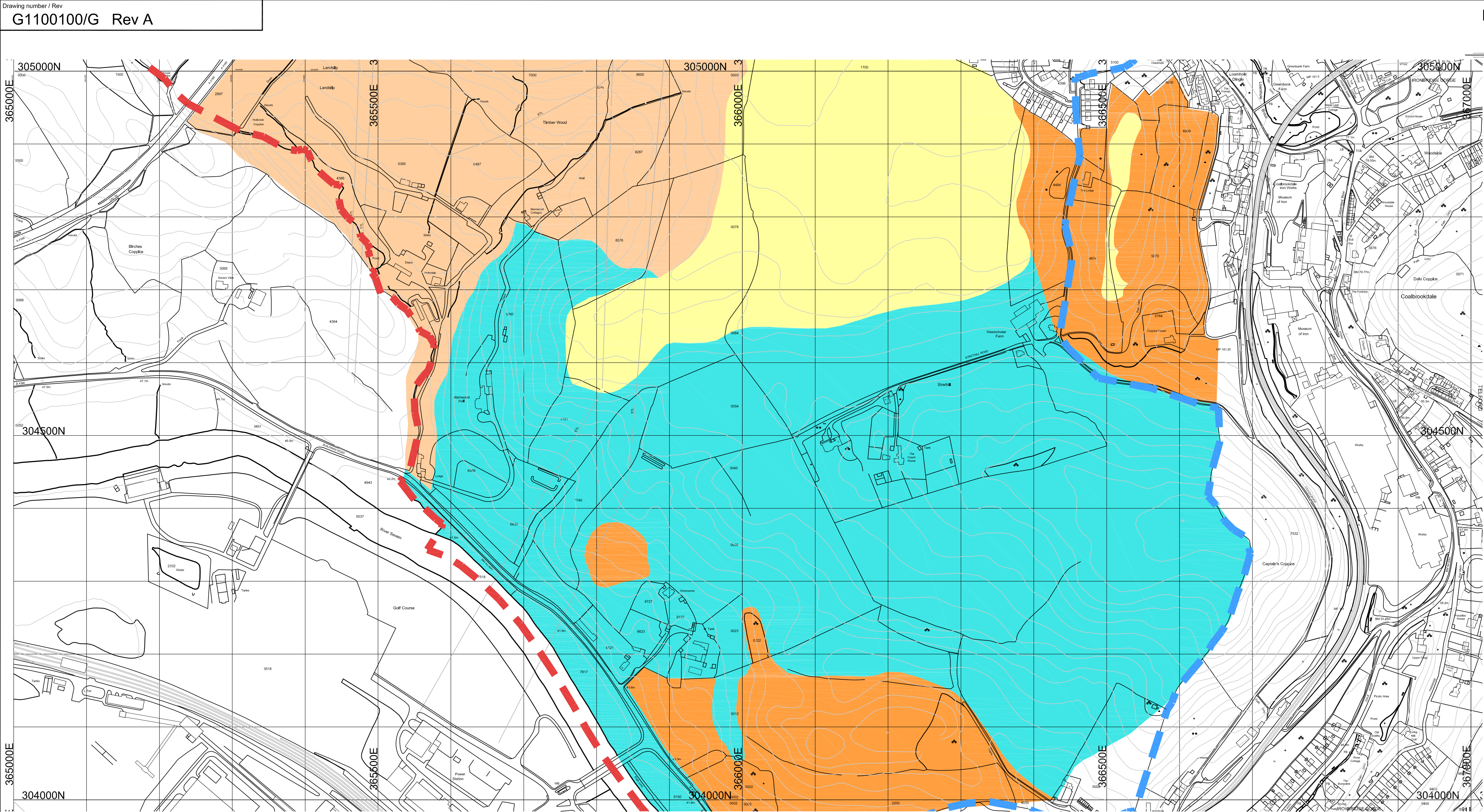
Drawing status

REPORT

Scale	1:3000 @ A1	DO NOT SCALE
Jacobs No.	B1100100	
Client no.	-	

Drawing number	1100100/G	Rev	A
----------------	-----------	-----	---

This drawing is not to be used in whole or part other than for the intended purpose and project as defined on this drawing. Refer to the contract for full terms and conditions.



KEY

PLANNING GUIDANCE

Zone	Development Plan Policy	Development Plan Proposals	Development Control
1	Area suitable for development in accordance with the development plan	Ground movement does not impose any constraints on site development	No Stability report required
2	Area likely to be suitable for development in accordance with the development plan	Ground movement does not impose significant constraints, although some mitigation/stabilisation measures may be required to ensure the stability of the site and surrounding land	An Outline Stability Report would normally be required, prepared by a Competent Person
3	Area likely to be suitable for development in accordance with the development plan provided the developer undertakes appropriate mitigation and stabilisation measures.	Ground movement imposes constraints that would generally require mitigation/stabilisation measures to ensure the stability of the site and surrounding land	A Standard Stability Report would normally be required which <i>may</i> include subsurface investigation and ground movement monitoring and where appropriate details of proposed stabilisation methods, prepared by a Competent Person
4	Area unlikely to be suitable for development in accordance with the development plan unless the developer undertakes appropriate mitigation and stabilisation measures	Ground movement imposes <i>significant</i> constraints that would generally require large-scale mitigation/stabilisation measures to ensure the stability of the site and surrounding land	A Detailed Stability Report would be required including detailed subsurface investigation and long term ground movement (both surface and sub-surface) monitoring and detailed proposed stabilisation methods, prepared by a Competent Person
5	Area very unlikely to be suitable for built development	Ground movement imposes <i>severe</i> constraints that probably could not be overcome by cost effective and environmentally acceptable mitigation or stabilisation measures to ensure the stability of the site and surrounding land	A Detailed Stability Report would be required including detailed subsurface investigation and ground movement (both surface and sub-surface) monitoring and detailed proposed stabilisation methods, prepared by a Competent Person



A	JUN 09	MINOR AMENDMENTS - CLIENT REQUEST	DJW	DHR	JA
0	DEC 08	REPORT	WRG	DHR	JA
Rev	Rev. Date	Purpose of revision	Drawn	Checked	Approved

JACOBS
Hollinwood House, Stafford Court, Stafford Park 1, Telford, UK, TF3 3DD
Tel: +44(0)1952 236500 Fax: +44(0)1952 236501
www.jacobs.com

Client

Telford & Wrekin
COUNCIL

Project

IRONBRIDGE GORGE
GEOMORPHOLOGICAL MAPPING

Drawing title

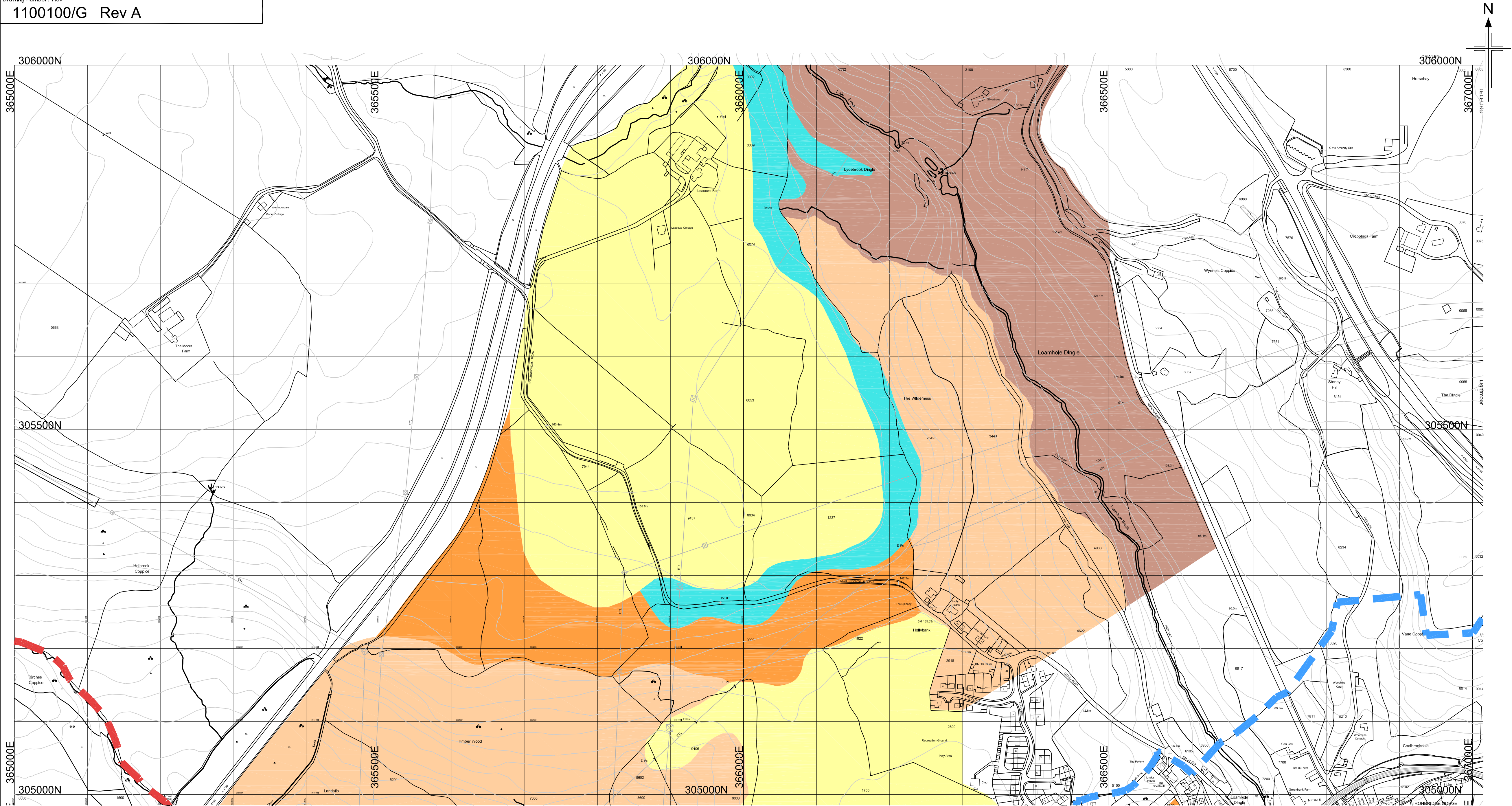
**PLANNING GUIDANCE MAP
STUDY AREA
SJ 6504 - SJ 6604**

Drawing status

REPORT

Scale	1:3000 @ A1	DO NOT SCALE
Jacobs No.	B1100100	
Client no.	-	
Drawing number	G1100100/G	Rev A

This drawing is not to be used in whole or part other than for the intended purpose and project as defined on this drawing. Refer to the contract for full terms and conditions.



KEY

PLANNING GUIDANCE

Zone	Development Plan Policy	Development Plan Proposals	Development Control
1	Area suitable for development in accordance with the development plan	Ground movement does not impose any constraints on site development	No Stability report required
2	Area likely to be suitable for development in accordance with the development plan	Ground movement does not impose significant constraints, although some mitigation/stabilisation measures may be required to ensure the stability of the site and surrounding land	An Outline Stability Report would normally be required, prepared by a Competent Person
3	Area likely to be suitable for development in accordance with the development plan provided the developer undertakes appropriate mitigation and stabilisation measures.	Ground movement imposes constraints that would generally require mitigation/stabilisation measures to ensure the stability of the site and surrounding land	A Standard Stability Report would normally be required which <i>may</i> include subsurface investigation and ground movement monitoring and where appropriate details of proposed stabilisation methods, prepared by a Competent Person
4	Area unlikely to be suitable for development in accordance with the development plan unless the developer undertakes appropriate mitigation and stabilisation measures	Ground movement imposes <i>significant</i> constraints that would generally require large-scale mitigation/stabilisation measures to ensure the stability of the site and surrounding land	A Detailed Stability Report would be required including detailed subsurface investigation and long term ground movement (both surface and sub-surface) monitoring and detailed proposed stabilisation methods, prepared by a Competent Person
5	Area very unlikely to be suitable for built development	Ground movement imposes <i>severe</i> constraints that probably could not be overcome by cost effective and environmentally acceptable mitigation or stabilisation measures to ensure the stability of the site and surrounding land	A Detailed Stability Report would be required including detailed subsurface investigation and ground movement (both surface and sub-surface) monitoring and detailed proposed stabilisation methods, prepared by a Competent Person

TELFD AND WREKIN BOROUGH BOUNDARY

WORLD HERITAGE SITE BOUNDARY

A	JUN 09	MINOR AMENDMENTS - CLIENT REQUEST		DJW	DHR	JA
0	DEC 08	REPORT		WRG	DHR	JA
Rev	Rev. Date	Purpose of revision		Drawn	Checked	Approved

JACOBS

Hollinswood House, Stafford Court, Stafford Park 1, Telford, UK, TF3 3DD
Tel: +44(0)1952 236500 Fax: +44(0)1952 236501
www.jacobs.com

Client

Telford & Wrekin

COUNCIL

Project

IRONBRIDGE GORGE
GEOMORPHOLOGICAL MAPPING

Drawing title

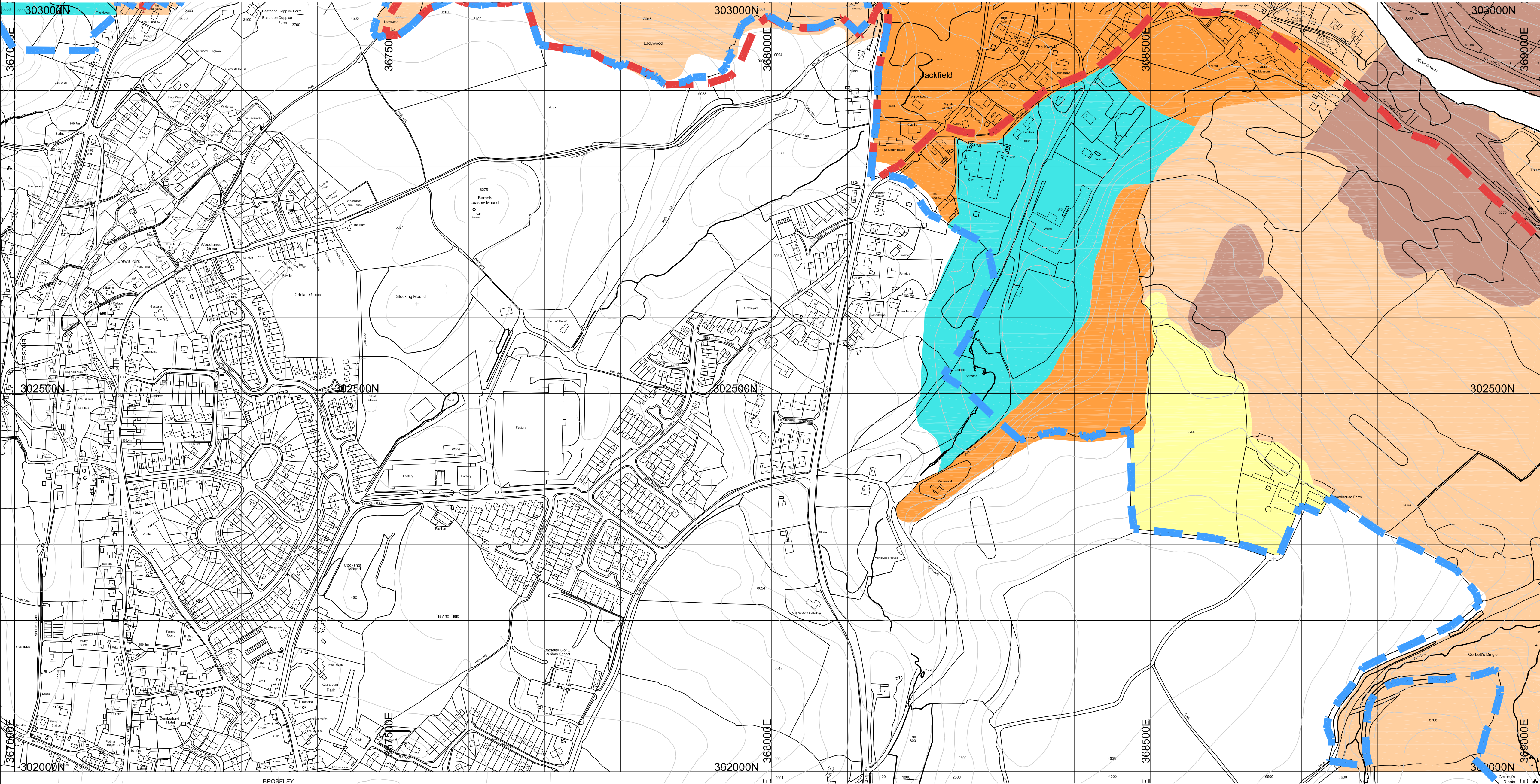
PLANNING GUIDANCE MAP
STUDY AREA
SJ 6505 - SJ 6605

Drawing status

REPORT

Scale	1:3000 @ A1	DO NOT SCALE	
Jacobs No.	B1100100		
Client no.	-		
Drawing number	1100100/G		Rev
			A

This drawing is not to be used in whole or part other than for the intended purpose and project as defined on this drawing. Refer to the contract for full terms and conditions.



KEY

PLANNING GUIDANCE

Zone	Development Plan Policy	Development Plan Proposals	Development Control
1	Area suitable for development in accordance with the development plan	Ground movement does not impose any constraints on site development	No Stability report required
2	Area likely to be suitable for development in accordance with the development plan	Ground movement does not impose significant constraints, although some mitigation/stabilisation measures may be required to ensure the stability of the site and surrounding land	An Outline Stability Report would normally be required, prepared by a Competent Person
3	Area likely to be suitable for development in accordance with the development plan provided the developer undertakes appropriate mitigation and stabilisation measures.	Ground movement imposes constraints that would generally require mitigation/stabilisation measures to ensure the stability of the site and surrounding land	A Standard Stability Report would normally be required which <i>may</i> include subsurface investigation and ground movement monitoring and where appropriate details of proposed stabilisation methods, prepared by a Competent Person
4	Area unlikely to be suitable for development in accordance with the development plan unless the developer undertakes appropriate mitigation and stabilisation measures	Ground movement imposes <i>significant</i> constraints that would generally require large-scale mitigation/stabilisation measures to ensure the stability of the site and surrounding land	A Detailed Stability Report would be required including detailed subsurface investigation and long term ground movement (both surface and sub-surface) monitoring and detailed proposed stabilisation methods, prepared by a Competent Person
5	Area very unlikely to be suitable for built development	Ground movement imposes <i>severe</i> constraints that probably could not be overcome by cost effective and environmentally acceptable mitigation or stabilisation measures to ensure the stability of the site and surrounding land	A Detailed Stability Report would be required including detailed subsurface investigation and ground movement (both surface and sub-surface) monitoring and detailed proposed stabilisation methods, prepared by a Competent Person

Telford and Wrekin Borough Boundary

World Heritage Site Boundary

A

JUN 09

MINOR AMENDMENTS - CLIENT REQUEST

DJW

DHR

JA

0

DEC 08

REPORT

WRG

DHR

JA

Rev

Rev. Date

Purpose of revision

Drawn

Checked

Approved

JACOBS

Hollinwood House, Stafford Court, Stafford Park 1, Telford, UK, TF3 3DD

Tel: +44(0)1952 236500 Fax: +44(0)1952 236501

www.jacobs.com

Client

Telford & Wrekin

COUNCIL

Project

IRONBRIDGE GORGE
GEOMORPHOLOGICAL MAPPING

Drawing title

PLANNING GUIDANCE MAP
STUDY AREA
SJ 6702 - SJ 6802

Drawing status

REPORT

Scale

1:3000 @ A1

DO NOT SCALE

Jacobs No.

B1100100

Client no.

-

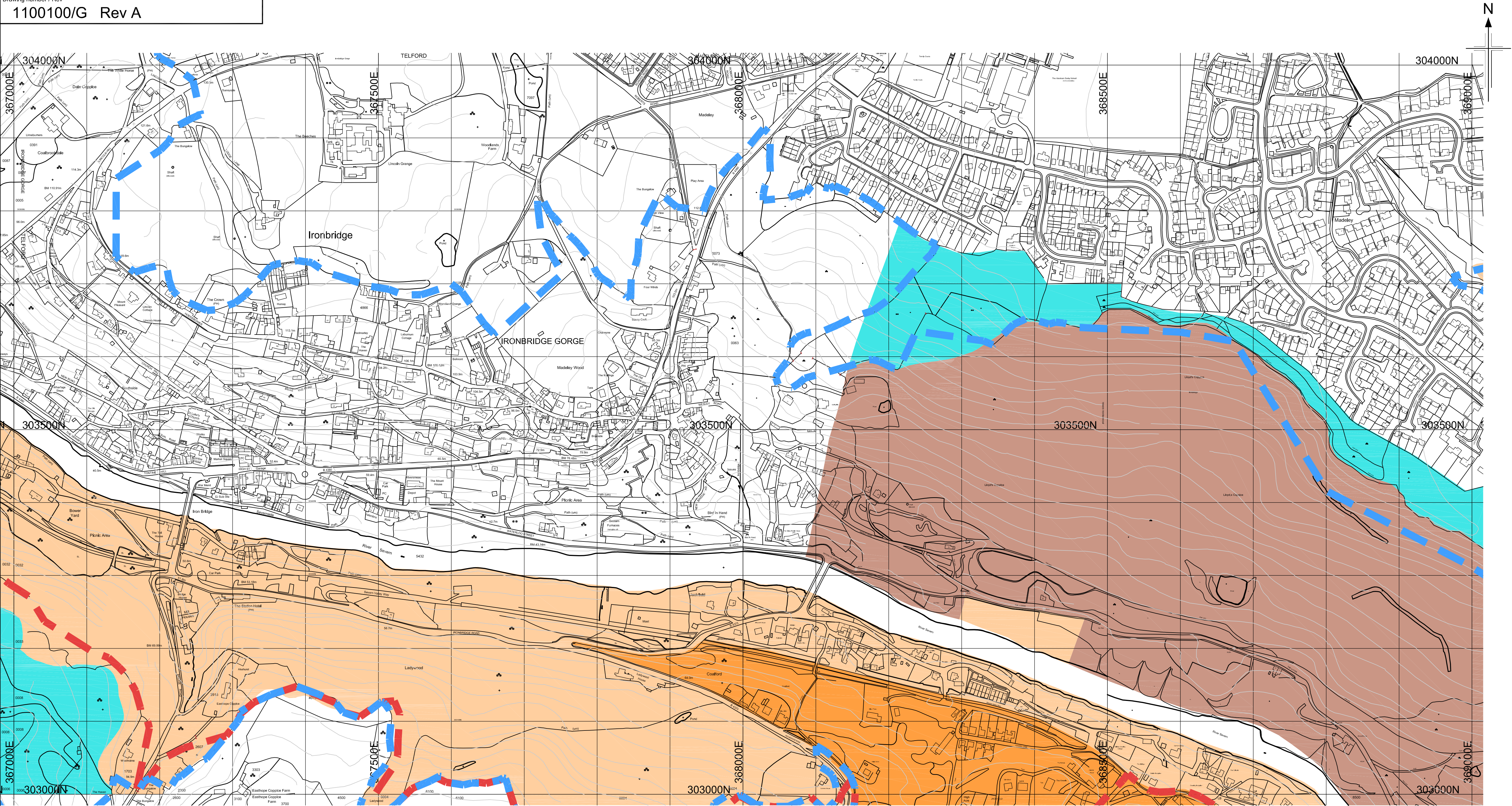
Drawing number

1100100/G

Rev

A

This drawing is not to be used in whole or part other than for the intended purpose and project as defined on this drawing. Refer to the contract for full terms and conditions.



KEY

PLANNING GUIDANCE

Zone	Development Plan Policy	Development Plan Proposals	Development Control
1	Area suitable for development in accordance with the development plan	Ground movement does not impose any constraints on site development	No Stability report required
2	Area likely to be suitable for development in accordance with the development plan	Ground movement does not impose significant constraints, although some mitigation/stabilisation measures may be required to ensure the stability of the site and surrounding land	An Outline Stability Report would normally be required, prepared by a Competent Person
3	Area likely to be suitable for development in accordance with the development plan provided the developer undertakes appropriate mitigation and stabilisation measures.	Ground movement imposes constraints that would generally require mitigation/stabilisation measures to ensure the stability of the site and surrounding land	A Standard Stability Report would normally be required which <i>may</i> include subsurface investigation and ground movement monitoring and where appropriate details of proposed stabilisation methods, prepared by a Competent Person
4	Area unlikely to be suitable for development in accordance with the development plan unless the developer undertakes appropriate mitigation and stabilisation measures	Ground movement imposes <i>significant</i> constraints that would generally require large-scale mitigation/stabilisation measures to ensure the stability of the site and surrounding land	A Detailed Stability Report would be required including detailed subsurface investigation and long term ground movement (both surface and sub-surface) monitoring and detailed proposed stabilisation methods, prepared by a Competent Person
5	Area very unlikely to be suitable for built development	Ground movement imposes <i>severe</i> constraints that probably could not be overcome by cost effective and environmentally acceptable mitigation or stabilisation measures to ensure the stability of the site and surrounding land	A Detailed Stability Report would be required including detailed subsurface investigation and ground movement (both surface and sub-surface) monitoring and detailed proposed stabilisation methods, prepared by a Competent Person

TELFORD AND WREKIN BOROUGH BOUNDARY

WORLD HERITAGE SITE BOUNDARY

A	JUN 09	MINOR AMENDMENTS - CLIENT REQUEST	DJW	DHR	JA
0	DEC 08	REPORT	WRG	DHR	JA
Rev	Rev. Date	Purpose of revision	Drawn	Checked	Approved

JACOBS

Hollinwood House, Stafford Court, Stafford Park 1, Telford, UK, TF3 3DD
Tel: +44(0)1952 236500 Fax: +44(0)1952 236501
www.jacobs.com

Client

Telford & Wrekin
COUNCIL

Project

IRONBRIDGE GORGE
GEOMORPHOLOGICAL MAPPING

Drawing title

PLANNING GUIDANCE MAP
STUDY AREA
SJ 6703 - SJ 6803

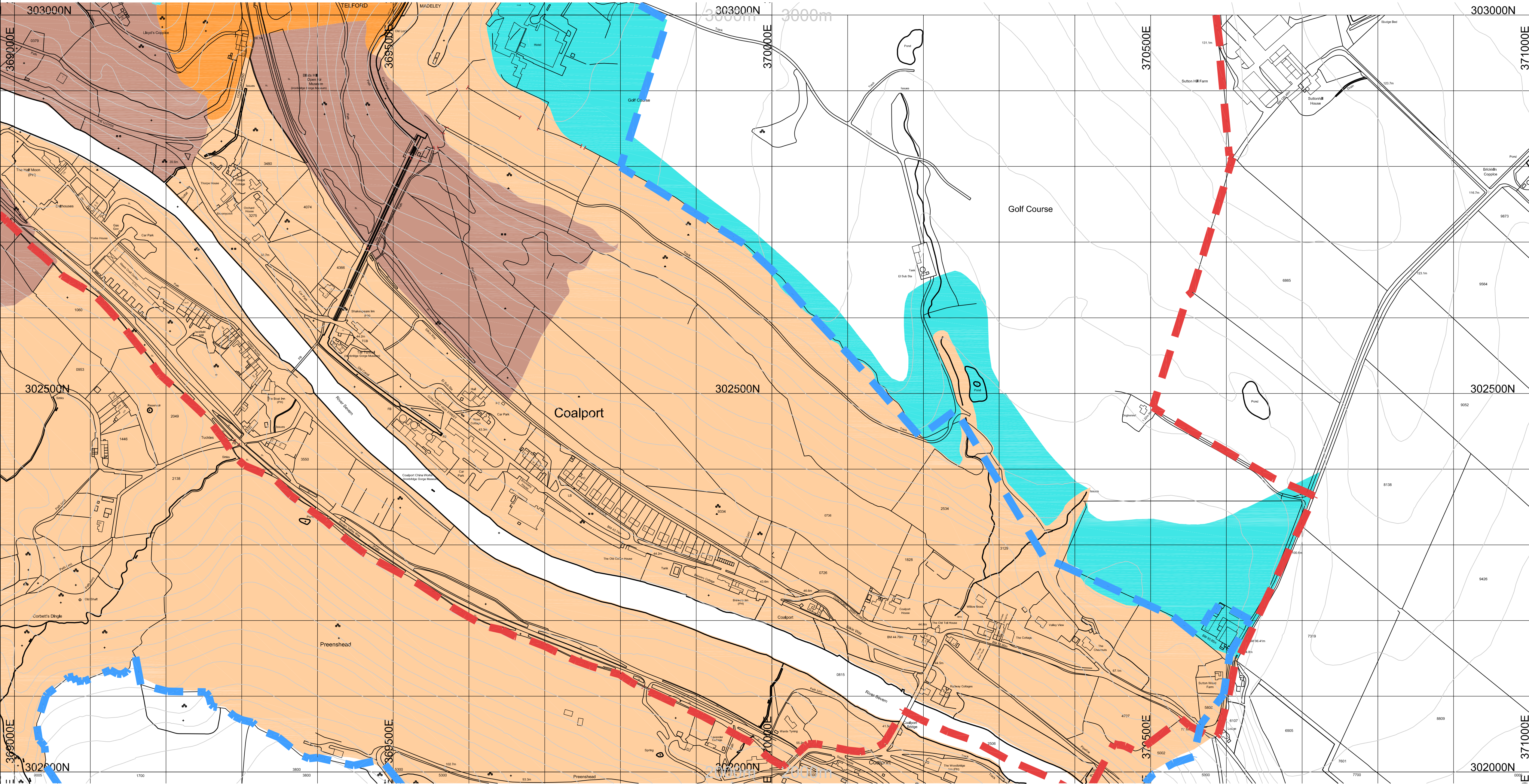
Drawing status

REPORT

Scale	1:3000 @ A1	DO NOT SCALE
Jacobs No.	B1100100	
Client no.	-	

Drawing number	1100100/G	Rev	A
----------------	-----------	-----	---

This drawing is not to be used in whole or part other than for the intended purpose and project as defined on this drawing. Refer to the contract for full terms and conditions.



KEY

PLANNING GUIDANCE

Zone	Development Plan Policy	Development Plan Proposals	Development Control
1	Area suitable for development in accordance with the development plan	Ground movement does not impose any constraints on site development	No Stability report required
2	Area likely to be suitable for development in accordance with the development plan	Ground movement does not impose significant constraints, although some mitigation/stabilisation measures may be required to ensure the stability of the site and surrounding land	An Outline Stability Report would normally be required, prepared by a Competent Person
3	Area likely to be suitable for development in accordance with the development plan provided the developer undertakes appropriate mitigation and stabilisation measures.	Ground movement imposes constraints that would generally require mitigation/stabilisation measures to ensure the stability of the site and surrounding land	A Standard Stability Report would normally be required which <i>may</i> include subsurface investigation and ground movement monitoring and where appropriate details of proposed stabilisation methods, prepared by a Competent Person
4	Area unlikely to be suitable for development in accordance with the development plan unless the developer undertakes appropriate mitigation and stabilisation measures	Ground movement imposes <i>significant</i> constraints that would generally require large-scale mitigation/stabilisation measures to ensure the stability of the site and surrounding land	A Detailed Stability Report would be required including detailed subsurface investigation and long term ground movement (both surface and sub-surface) monitoring and detailed proposed stabilisation methods, prepared by a Competent Person
5	Area very unlikely to be suitable for built development	Ground movement imposes <i>severe</i> constraints that probably could not be overcome by cost effective and environmentally acceptable mitigation or stabilisation measures to ensure the stability of the site and surrounding land	A Detailed Stability Report would be required including detailed subsurface investigation and ground movement (both surface and sub-surface) monitoring and detailed proposed stabilisation methods, prepared by a Competent Person

Telford and Wrekin Borough Boundary

World Heritage Site Boundary

A	JUN 09	MINOR AMENDMENTS - CLIENT REQUEST	DJW	DHR	JA
0	DEC 08	REPORT	WRG	DHR	JA
Rev	Rev. Date	Purpose of revision	Drawn	Checked	Approved

JACOBS

Hollinswood House, Stafford Court, Stafford Park 1, Telford, UK, TF3 3DD
Tel: +44(0)1952 236500 Fax: +44(0)1952 236501
www.jacobs.com

Client

Telford & Wrekin
COUNCIL

Project

IRONBRIDGE GORGE
GEOMORPHOLOGICAL MAPPING

Drawing title

PLANNING GUIDANCE MAP
STUDY AREA
SJ 6902 - SJ 7002

Drawing status

REPORT

Scale	1:3000 @ A1	DO NOT SCALE
Jacobs No.	B1100100	
Client no.	-	

Drawing number	1100100/G	Rev	A
----------------	-----------	-----	---

This drawing is not to be used in whole or part other than for the intended purpose and project as defined on this drawing. Refer to the contract for full terms and conditions.