

Annual Monitoring Report 2018

Contents

1	Introduction	5
2	Housing	8
2.1	Completions and Commitments	8
2.2	Housing Land Provision 2018	10
2.3	Housing Trajectory	11
2.4	Gypsies and Travellers	12
3	Economy	15
3.1	Employment Land	15
3.2	Retail and Town Centres	15
3.3	Tourism	16
3.4	Youth Employment	17
4	Natural Environment	19
4.1	Public Open Space	19
4.2	Local Green Spaces in Neighbourhood Development Plans	19
4.3	Strategic Landscapes	19
4.4	Sites of Special Scientific Interest (SSSI)	19
4.5	Local Wildlife Sites and Local Geological Sites	19
5	Community	22
5.1	Sports & Leisure Facilities	22
5.2	Mortality Rates	22
5.3	Index of Multiple Deprivation	22
5.4	Community Facilities	23
5.5	Schools	23
5.6	Qualifications	23
5.7	Secure by Design Award	24
5.8	Sheltered Housing Units	24
6	Connections	26
6.1	Highways Improvements	26
6.2	Travel	26
6.2.1	Train, Underground, Light Rail, Tram, Minibus or Coach	26
6.2.2	Car and Van	26

Contents

6.3	Broadband	26
6.4	Telecoms	26
7	Built Environment and Heritage	28
7.1	Design Awards	28
7.2	Heritage	28
8	Environmental Resources	30
8.1	Renewable Energy	30
8.2	Minerals	30
8.3	Waste	32
8.4	Water Quality and Flood Risk	32
8.5	Agricultural Land Quality	33
9	Future Monitoring	35
9.1	Indicators	35
10	Development Plan Documents	37
10.1	Local Development Scheme Milestones	37
11	Duty to Cooperate	39
12	Neighbourhood Planning	41
13	Appendix	44

1 Introduction

1 Introduction

1

1 Introduction

1.0.1 The Annual Monitoring Report (AMR) shows the performance of planning policy within the Borough over the last year and if necessary will inform any future reviews of the Local Plan. The data used for the report comes from the financial year of 1st April 2017 - 31st March 2018 unless otherwise stated, with its focus being the Telford & Wrekin Local Plan (adopted January 2018).

1.0.2 Where possible, this report sets out the data for the urban areas of Telford, Newport and rural area, as defined on the Map of the Borough (Map 1).

1.0.3 Local planning authorities are required to make their Authority's AMR publicly available under Regulation 34 of the Town and Country Planning (Local Planning) (England) Regulations 2012. Telford & Wrekin Council is committed to publishing its report annually.

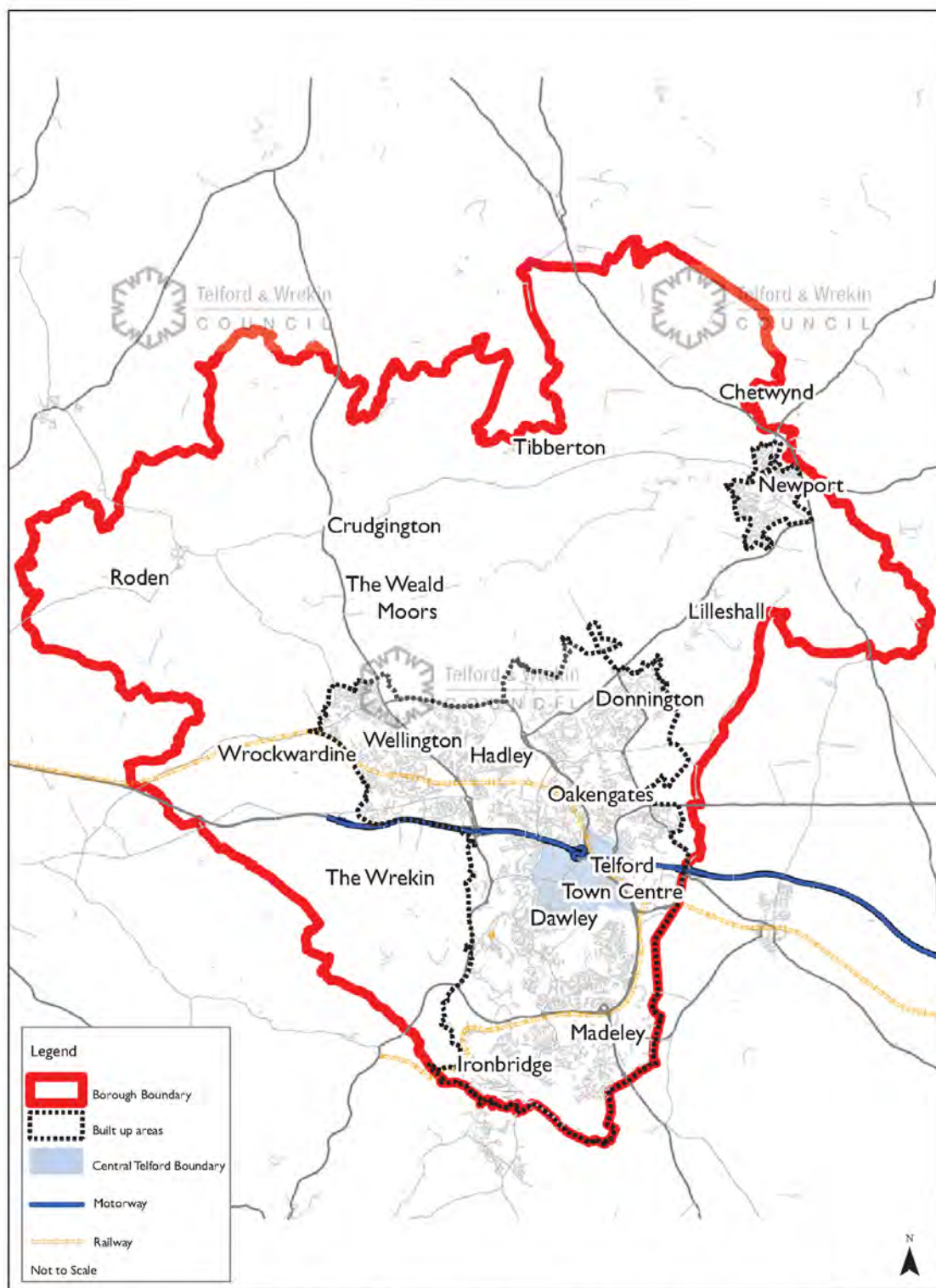
1.0.4 The UK Government's Planning Practice Guidance also advises that local planning authorities publish information at least annually. Amongst other things, this AMR will review progress regarding the implementation of the planning policies contained within the Telford & Wrekin Local Plan 2011 - 2031. Furthermore the AMR will review the performance of the policies and highlight any steps the Council may need to take to aid the delivery of the policy. The AMR also reports on activity relating to the duty to cooperate and on any Neighbourhood Development Orders or Neighbourhood Development Plans.

1.0.5 To aid monitoring, a set of indicators linked to the Local Plan objectives have been established. These indicators are reported on in the monitoring section.

1.0.6 For further information on planning policy for Telford & Wrekin, please see the website via the following link - www.telford.gov.uk/localplan

1 Introduction

Map 1 Map of the Borough



Reproduced from the Ordnance Survey mapping with the permission of the Controller of Her Majesty's Stationery Office © Crown copyright. Unauthorised reproduction infringes Crown copyright and may lead to prosecution or civil proceedings Borough of Telford & Wrekin Licence No 100019694. Date: 2013
Drawn by Richard Overby Location r:\d\AMR\AMR 2012\TownBoundary.mxd

2 Housing

2 Housing

2 Housing

2.0.1 This section provides information related to the progress of housing delivery, with 2017/18 completions and existing commitments (under construction and not yet started).

2.1 Completions and Commitments

2.1.1 Table 2.1 shows the rate of net completions over the period since 2006. As can be seen, the second half of the period continues to see significant numbers of new dwellings being delivered.

Table 2.1 Housing Completions 2006-18

	2006/7	2007/8	2008/9	2009/10	2010/11	2011/12	2012/13	2013/14	2014/15	2015/16	2016/17	2017/18	Total
Telford	365	246	407	468	511	622	591	795	947	1025	943	803	7723
Newport	50	61	36	3	20	82	13	39	87	166	168	179	904
Rural Area	37	56	19	12	20	16	3	8	40	64	37	85	397
Total	452	363	462	483	551	720	607	842	1074	1255	1148	1067	9024

2.1.2 In the year 2017/18, completions, in gross terms, totalled 1,185 dwellings. This figure is reduced to net completions of 1,067 dwellings, allowing for 118 units lost through demolition or conversion. This represents a significant number of units lost through demolition or conversion, predominantly linked to the remodelling of former housing sites brought forward by Wrekin Housing Trust. A programme of renewal and redevelopment is likely to continue in the short term, which will see some of these units replaced in future years. Such losses mask, to some extent, the continued high level of housing delivery.

2.1.3 As at March 2018, Table 2.2 shows dwellings under construction totalled 962 dwellings, with a continuing large number of these (84%) being focused on Telford built-up area. On this basis, it is not unreasonable to suggest that completions will continue to exceed the housing target for the borough (864 dwellings per year) in the coming year (2018/19).

Table 2.2 Dwellings with permission (not yet completed), at March 2018

	Under construction	Not started
Telford	813	7,149
Newport	64	524
Rural	85	690
Borough total	962	8,363

2.1.4 The total number of units not yet started at March 2018 remains at a very healthy level (8,363 dwellings), bolstered by the continued build out of the strategic sites (Lawley; Lightmoor; and Telford Millennium Community, Ketley), as well as wide range of larger and smaller sites distributed across the built-up areas of the borough. It can be seen that supply continues to be

2 Housing

dominated by sites in Telford, some 85% of the total. This is broadly consistent with the observed distribution of housing and households across the borough. Consequently, given current market conditions, local housing delivery is likely to remain robust in the short to medium term at least.

Affordable Housing

2.1.5 For net completions of dwellings at March 2018, the following is the affordable housing breakdown. Table 2.3 shows the amount and tenure of affordable homes completed in the months between 1 April 2017 - 31 March 2018. Please note that these figures are apart of the overall figures stated in Table 2.1.

Table 2.3 Breakdown of Affordable Homes Completed, 1 April 2017 to 31 March 2018

Sub Area / Tenure	Social Rent	Affordable Rent	Shared Ownership	TOTAL
Telford	12	166	37	215
Newport	18	4	0	22
Rural Area	0	8	2	10
TOTAL	30	178	39	247

2.1.6 The Council's policy is that new residential development sites (including mixed use schemes containing residential development) should provide for the range of local housing needs and create a balance of tenures. Policy HO 5 of the Local Plan requires the provision of affordable homes on sites of 11 dwellings or more in the following areas:

- Telford - 25%; and
- Newport and the rural area - 35%.

2.1.7 Table 2.4 applies these percentages to the net completion figures for 11 dwellings or more, for the year 2017/18. The table shows actual new affordable homes completed for each of the areas set out above and for the borough as a whole. Delivery of new affordable homes on sites is not linear and for various reasons, may extend over several phases and/or more than one year. The percentage of affordable homes achieved in any one year is therefore indicative.

Table 2.4 Affordable Homes Completed as Percentage % of Total Net Housing Completions by sub-area, 1 April 2017 to 31 March 2018

Sub Area / Tenure	Net Completions (11 dwellings or more)	Affordable Homes Provided	% of Affordable Homes Completed on sites of 11 dwellings or more
Telford	744	215	29
Newport	139	22	16
Rural	36	10	33

2 Housing

Sub Area / Tenure	Net Completions (11 dwellings or more)	Affordable Homes Provided	% of Affordable Homes Completed on sites of 11 dwellings or more
TOTAL	919	247	27

2.1.8 Table 2.5 shows the total amount of affordable homes delivered within the borough (this includes affordable homes that fall below the 11 dwelling threshold). The amount of affordable housing delivered in 2017/18 was 27% of the overall net completions for the year (table 2.4). These figures exclude tenure switches, for example through mortgage rescue.

Table 2.5 Affordable Homes Provided, 2006-2018

	Social Rent	Affordable Rent	Shared Ownership	Total Affordable Homes Provided
2006-17				2,495
2017/8	30	221	39	290
2006-18				2,785

New Dwellings on Previously Developed Land

2.1.9 Table 2.6 shows the percentage of new dwellings on previously developed land and green field sites completed during the period 2006-2018. The higher percentage of development on green field land has arisen due to the build out of large strategic sites within the boundary of Telford.

Table 2.6 Residential Completions by Previously Developed Land (PDL) type

		2006/7	2007/8	2008/9	2009/10	2010/11	2011/12	2012/13	2013/14	2014/15	2015/16	2016/17	2017/18
Green Field	No.	51	65	22	50	81	184	269	555	588	562	564	629
	(%)	13	20	5	10	15	27	44	66	55	45	49	59
Previously Developed	No.	327	255	410	433	470	500	338	287	486	693	582	438
	(%)	87	80	95	90	85	73	56	34	45	55	51	41

2.2 Housing Land Provision 2018

2.2.1 Set out below is an updated version of Table 10 of the Telford & Wrekin Local Plan (TWLP), which summarises the latest position regarding overall housing land provision for the borough (as at end of March 2018). It is derived from an assessment of all known and projected sources of land supply available to the Council.

Table 2.7 Housing Land Provision for the borough 2011-31 (as at end of March 2018)

		Gross	Net
A	Net completions (2011-17)		6713

2 Housing

2

		Gross	Net
B	Dwellings with planning permission (under construction)		962
C	Dwellings with planning permission (not started)	8363	
D	Less 20% allowance for non-implementation	(1673)	6690
E	Total Existing Supply (A+B+D)		14365
F	Supply from resolution to grant sites	778	
	Less 20% allowance for non-implementation	(156)	622
G	Telford & Wrekin Local Plan site allocations	820	
	Less 20% allowance for non-implementation	(164)	656
H	Windfall allowance (sites 0.1 ha or less)	300	300
I	Madeley Neighbourhood Development Plan site - Rough House Park	50	
	Less 20% for non-implementation	(10)	40
J	Total Future Supply (F+G+H+I)		1618
K	Total Housing Land Provision (E+J)		15983
L	Overall Housing Target for the period 2011-31		17280
M	Residual Supply from other sources inc. additional site allocations		1297

2.2.2 On the basis of the calculation presented here, the majority of supply needed to deliver the Local Plan housing requirement has already been identified. Nonetheless, a residual land supply continues to be identified in order that the proposed level of growth can be delivered by 2031 (assuming that predicated levels of non-implementation happen). The next section will consider the issue of future supply and delivery in the borough.

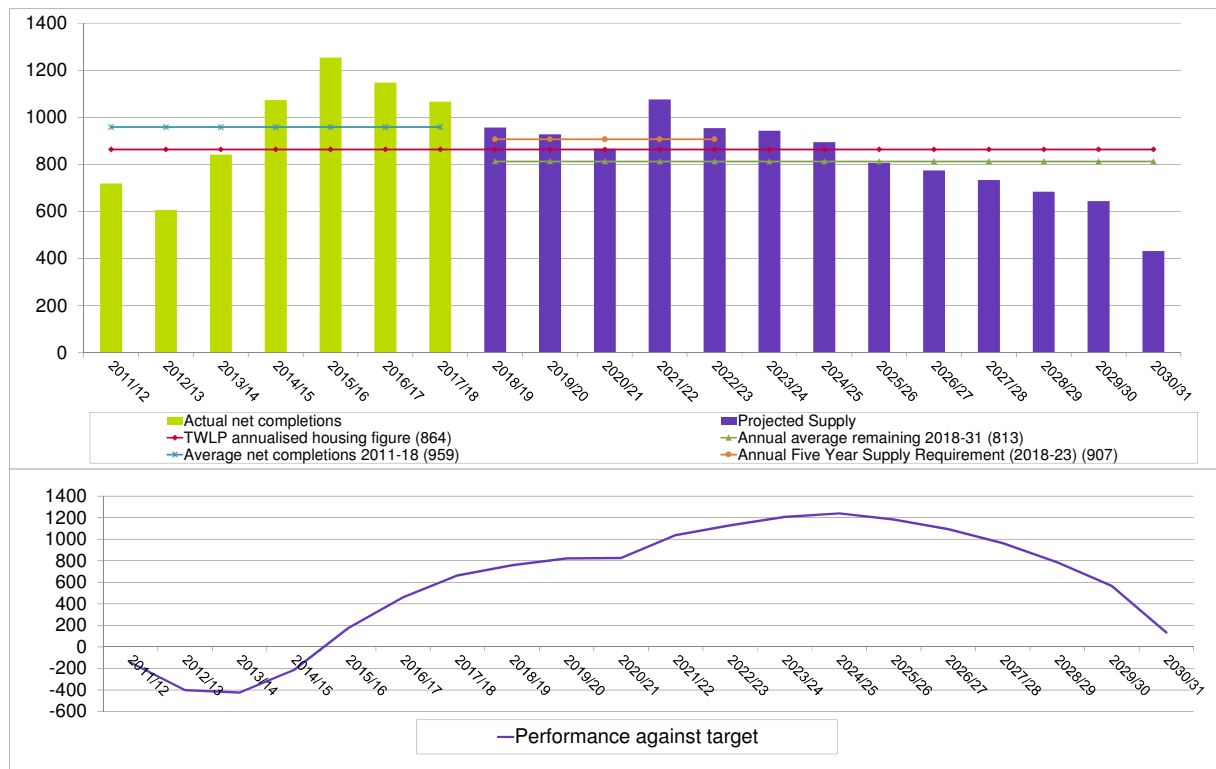
2.3 Housing Trajectory

2.3.1 The housing trajectory assumes a level of supply necessary to deliver the adopted planned housing requirement of 17,280 net new dwellings by 2031. The figure below illustrates the number of completions that could be expected during the plan period, projected forward from the end of March 2018. The performance against target measure illustrates the likely progress towards achieving the planned level of growth over the plan period.

2.3.2 The period covering 2018 to 2023 has been informed by an assessment of the likely delivery from identified sites as part the Council's five year supply update (published separately). It is expected that actual delivery will continue to exceed the annual planned housing requirement for the foreseeable future. The latest position demonstrates there is a robust housing land supply.

2 Housing

Figure 1 Housing Trajectory - updated, end of March 2018



2.3.3 The trajectory makes certain assumptions regarding existing and future land supply. This includes a notional supply from other sources such as additional site allocations. The figure totals 1,297 dwellings at 31 March 2018) which helps towards achieving the Local Plan growth target beyond the current five year period. This is on the basis that actual delivery is 20% less than it might be due to non-implementation factored into the various sources of supply. The calculations have also been made on the assumption that no additional land on unallocated sites (without planning permission) will come forward before 2031. Consequently, this is considered to be a worst-case scenario and it is likely that housing land supply, including from site allocations, will be sufficient to deliver the level of growth up to 2031.

2.4 Gypsies and Travellers

2.4.1 The most recent Gypsy and Traveller Accommodation Assessment (GTAA) for Telford & Wrekin (2014) identified the following unmet need (after commitments) over the plan period, 2014 - 2031:

- 32 permanent pitches; and
- 11 transit pitches.

2.4.2 The following additional provision has been approved since the GTAA was published:

2 Housing

2

Table 2.8

Application number	Site Address Site	Description of proposal	Status
TWC/2016/0159	Land adjacent Caravan Site, Lodge Road, Donnington Wood, Telford, Shropshire	Change of use of grazing land to a Gypsy and traveller site including access roads, provision of 1no. toilet block and landscaping. (Transit/permanent site. 11no. pitches)	Application approved (site in use).
TWC/2016/0263	Ketley Community Recycling Centre (CRC), Whitchurch Drive, Telford, Shropshire, TF1 5AB	Change of use of existing recycling centre to a Gypsy and Travellers site and provision of 1no. toilet block. (14no. pitches)	Application approved (site not started).

2.4.3 At March 2018, there have been no planning applications for Gypsy and Traveller accommodation.

3 Economy

3 Economy

3.0.1 The information and data set out in this section has been obtained from planning application monitoring and from the Office for National Statistics through their NOMIS website.⁽¹⁾

3.1 Employment Land

3.1.1 Current delivery as of April 2018 stands at 47 ha of B Use Class land. The TWLP sets out a policy target of 76 hectares of employment land up to 2031, with 149 ha identified in the TWLP. The figure is a summary of the amount of land delivered (in hectares) for completed employment development at April 2018. Individual site level data is listed in Appendix 4a.

3.1.2 It is acknowledged that, similar to housing, there are a large number of extant section 7(1) consents for employment. The majority of these are allocations in the TWLP.

3.1.3 Telford & Wrekin delivered 16.09 ha of B Use Class land in the rural area, against a baseline of 29.4 ha of employment land in 2004. The figure is a summary of the amount of land delivered (in ha) for completed employment development at April 2018 in the rural area. Individual site level data is listed in Appendix 4a.

3.1.4 The Council continues to take a proactive role in the delivery of new employment land through the Telford Land Deal with Homes England. The deal is a new model of public land disposal which through upfront investment into site preparation and marketing of sites has helped accelerate the delivery of commercial and residential sites across the borough.

3.2 Retail and Town Centres

Town Centre Health Check

3.2.1 The Town Centre Health Check seeks to provide a overview of the vacancy rates for the main town centres in our Borough which are Telford Town Centre and Newport Town Centre. The Health Check provides an information base to identify future actions in the Local Plan.

3.2.2 The number of vacant units within a centre can provide a good indication of how a shopping centre is performing.

3.2.3 The following table summarises the key findings.

1 <http://www.nomisweb.co.uk/>

3 Economy

Table 3.1 Summary of the Centres

Centre	Total No. of Outlets Source: Site Visit, March/April 2013 - Experian Goad	Total Amount of Floorspace (Sq.m Gross) Source: Site Visit, March/April 2013 - Experian Goad	% Occupancy at March 2018
Telford town centre	179	75,400	89*
Newport town centre	164	30,570	98

3.2.4 The rate of vacant outlets is substantially below the average regional retail and leisure vacancy rate of 14.2% (H1 2017) - Local Data Company.

3.2.5 * Telford Town Centre has a potential 96% occupancy rate (including shops that are vacant for re-development). If we were to take out the shops that are vacant for re-development then the occupancy rate is 89%.

3.3 Tourism

Tourist Venues

3.3.1 No new leisure developments were completed in 2017/18.

Hotel Bed Spaces

3.3.2 The following planning applications related to hotels were determined in 2017/18:

Table 3.2

Plan App No.	Description	Decision Date	No. of hotel bed spaces created
TWC/2017/0952	Planning application for reserved matters approval of appearance, scale and layout of 80 bedroom extension to currently approved 100 bedroom hotel	10/01/2018	80
TWC/2017/0278	Proposed two storey and single storey rear extension to create a hotel comprising 11No. Guest Bedroom and manager's accommodation	21/09/2017	11
TWC/2017/0537	Application under section 192 for a certificate of lawfulness for proposed alterations to reduce the number of rooms from 12no. to 8no. and retain the bar/lounge area of the hotel	12/01/2018	-4

3 Economy

3

Plan App No.	Description	Decision Date	No. of hotel bed spaces created
TWC/2017/0974	Reserved matters application in relation to outline planning permission W2009/0914 for the erection of a multi storey car park, hotel/bar/restaurant	10/01/2018	100
Total			187

3.3.3 The table shows that there has been a net increase in the number of hotel bed spaces, expanding the leisure, tourism and business visitor offer supporting Destination Telford.

3.4 Youth Employment

3.4.1 On a monthly basis the Office for National Statistics (ONS) publish a range of labour market data via their NOMIS website (www.nomisweb.co.uk).

3.4.2 The youth employment profile is largely based on data published via NOMIS and summarises the key messages and trends for Telford and Wrekin around youth employment.

3.4.3 Youth unemployment rate rose from 12.3% to 16.3% in 2017, compared with the regional and national figures of 15.4% and 12.2% (down 0.5 and 1.9 ppts).

4 Natural Environment

4 Natural Environment

4 Natural Environment

4.1 Public Open Space

4.1.1 The Council will report the number of major schemes each year which, through a Section 106 agreement or other legal agreement provide funding, to the Council for the provision or management of open space on development sites.

4.1.2 In 2017 - 2018 one scheme paid funds to the Council for the management of public open space (Peregrine Way, Apley).

4.2 Local Green Spaces in Neighbourhood Development Plans

4.2.1 No new local green spaces were delivered through neighbourhood development plans in the period 1 April 2017- 31 March 2018. One local green space was delivered in Madeley in 2015. Forthcoming Neighbourhood Development Plans of Edgmond, Newport and Lilleshall will deliver further local green spaces in 2018/19.

4.3 Strategic Landscapes

4.3.1 No applications were refused on the basis of this policy.

4.4 Sites of Special Scientific Interest (SSSI)

4.4.1 There are eight Sites of Special Scientific Interest (SSSI) in the borough covering 517 ha of land. The condition of SSSI's is monitored by Natural England. 59% of the SSSI area is in favourable condition. An additional 32% of the SSSI area is in unfavourable recovering condition which is taken by Natural England to indicate that appropriate action is being taken to move towards a favourable condition.

4.5 Local Wildlife Sites and Local Geological Sites

4.5.1 There are 50 Local Wildlife Sites and 24 Local Geological Sites in the borough. These sites are in a mixture of private and public ownership.

4.5.2 There are 24 Local Geological Sites - 14 of which are appropriately managed (the test for appropriate management in these cases is met where Shropshire Geological Society has visited the site within the last 5 years, deemed the notable features to be in good condition and/or provided the owner with formal advice which is being acted upon). Shropshire Geological Society is working hard to secure access to these sites, and to establish relationships with landowners to achieve suitable management.

4.5.3 There are 50 Local Wildlife Sites - 31 of which are appropriately managed. The test for appropriate management is that more than 50% of the area of the site has a site management plan, is in a relevant agri-environment or woodland grant scheme or has received, and is known to be acting on, management advice (e.g. from Shropshire Wildlife Trust). 28 sites which are appropriately managed in the borough are owned by Telford & Wrekin Council and managed either by the Council directly or through a management agreement with Shropshire Wildlife Trust or a long term lease with Severn Gorge Countryside Trust. Three privately owned sites are also appropriately managed. The remaining 19 sites are in private ownership and their management status is largely unknown. The Council will engage with private landowners as and when the opportunity arises.

4 Natural Environment

4.5.4 A total of 60% of Telford & Wrekin's Local Sites (wildlife and geological sites) are appropriately managed. This is a significant achievement given that the national average when last published by Defra was 48% ⁽²⁾. The high number of sites being appropriately managed for nature conservation and geological heritage is largely due to the unique nature of Telford as a New Town where areas of land are owned by the Council. A large number of Local Sites are also Local Nature Reserves (or in the process of being declared LNR) and engagement with community volunteer groups, Shropshire Wildlife Trust and the Severn Gorge Countryside Trust is high and achieves excellent results for biodiversity and geodiversity.

4.5.5 The Council have also recognised the importance of locally valued green spaces and identified 104 Green Guarantee Sites in 2016 with a further 96 sites designated in 2018. The 200 sites include a mix of allotments, amenity spaces, formal parks and woodland with the Council investing in improving the value of these sites.

2 Nature Conservation: Local Sites in Positive Conservation Management in England, 2008/09 to 2017/18 Published by Defra January 2019

5 Community

5 Community

5 Community

5.1 Sports & Leisure Facilities

5.1.1 There were 664,490 visits in 2014/15 to Council owned sports and leisure facilities. In the period 1 April 2017 - 31 March 2018 there were 1,098,648 which is a significant and positive increase. The table below breaks down the visitor numbers at each Council owned facility.

Table 5.1

Site	Total (Heads)
Oakengates Leisure Centre	234,998
Wellington Leisure Centre	218,634
Telford Ice Rink	142,694
Abraham Darby Leisure Centre	167,629
Phoenix Leisure Centre	114,242
Newport Leisure Centre	124,344
Horsehay Golf Course	57,910
Stirchley Recreation Centre	20,890
Madeley Ski Slope	17,307
Grand Total	1,098,648

5.2 Mortality Rates

5.2.1 The closest figure available for the AMR period of 1 April 2017 - 31 March 2018 is 1,058.0 in 2016 (Office for National Statistics, National Records Scotland, Northern Ireland Statistics Research Agency, Released: 27 November 2017). The age-standardised mortality rates for 2016 are standardised to the 2013 European Standard Population, expressed per 100,000 population.

5.2.2 This is a decrease from the 1,084.5 age-standardised mortality rate in 2013.

5.3 Index of Multiple Deprivation

5.3.1 In the 2015 Index of Multiple Deprivation (IMD) there were 15 Lower-layer Super Output Areas in the 10% most deprived wards in the borough. The 15 Lower-layer Super Output Areas fall into the following wards: Brookside, College, Madeley and Sutton Hill, Dawley and Aqueduct, Hadley and Leegomery, Malinslee and Dawley Bank and Woodside.

5.3.2 This is a increase from 2010 in which there were 8 Lower-layer Super Output Areas. There is no date set for the next Index of Multiple Deprivation release. Therefore, this data is unlikely to change until 2020.

5 Community

5

5.4 Community Facilities

5.4.1 The NPPF advises local authorities to plan positively for the delivery of social and cultural facilities for the community's needs and to guard against their loss.

5.4.2 The Local Plan defines 'community facilities' as Pre-school, primary, secondary and further education facilities; Healthcare facilities such as GPs and health centres; Emergency services (police, fire and ambulance); General facilities such as community centres and halls and other spaces where community groups can meet; Places of worship, cemeteries and crematoria; Sports and leisure facilities, including the arts, cinemas and performance spaces; and Libraries. In 2017/18:

5.4.3 There have been 0 demolitions of community facilities.

5.4.4 There have been 2 planning applications related to community facilities:

- TWC/2017/0988 Erection of a single storey front extension to existing A & E department to create a new Urgent Care Centre
- TWC/2017/0446 Construction of a synthetic grass multi-function football and hockey pitch, changing rooms

5.4.5 There have been 4 changes of use of community facilities, resulting in an overall community facility gain:

- TWC/2017/0255 Change of use of the first floor from office (Use Class B1) to a wellness and health centre (Use Class D1)
- TWC/2017/0745 Change of use from (Use Class B1) office space to (Use Class D1) podiatry clinic
- TWC/2017/0530 Change of use of Educational Centre (Class D1) to storage and distribution unit
- TWC/2018/0135 Change of use from first floor office (Use Class B1(aa)) to a wellness and health centre (Use Classes D1 and D2)

5.4.6 Other:

- TWC/2017/0090 Continuation of leisure use (Use Class D2)

5.5 Schools

5.5.1 Between the period of 1 April 2017 - 31 March 2018 there have been no new schools built, in the borough.

5.6 Qualifications

5.6.1 The ONS Annual Population Survey states that between the period of January 2017 - December 2017 50.8% of the borough has a NVQ 3 or above. This is a increase from 2011 in which 42.3% of residents had a NVQ 3 or above.

5 Community

5.7 Secure by Design Award

5.7.1 West Mercia Police confirmed that 3 developments in the borough were awarded the Secure by Design Award in the borough during the period 1 April 2017 - 31 March 2018. The schemes are in the areas of: Malinslee, Madeley and Horsehay.

5.8 Sheltered Housing Units

5.8.1 1 scheme of sheltered housing units (Use Class C2) was completed in the period 1 April 2017 - 31 March 2018:

- TWC/2017/0835 Application for the change of use from Houses of multiple occupation (Sui Generis) to Children's home (Use Class C2)

6 Connections

6 Connections

6 Connections

6.1 Highways Improvements

6.1.1 The borough has secured £6.34 million during the current financial year from funding bids to the Local Enterprise Partnership (LEP). The spending is to be spread over four years on highways improvements.

6.2 Travel

6.2.1 Train, Underground, Light Rail, Tram, Minibus or Coach

6.2.1.1 5.38% of the borough travel to work by train, underground, light rail, tram, minibus or coach. This data is from the 2011 Census and will next be updated in 2021.

6.2.2 Car and Van

6.2.2.1 66.8% of the borough travel to work by car or van (includes passengers). This data is from the 2011 Census and will next be updated in 2021.

6.3 Broadband

6.3.1 Superfast Telford is a £5.6m programme jointly funded by Telford & Wrekin Council, Broadband Delivery UK (BDUK) and delivery partners BT.

6.3.2 The project will enable more than 9,000 residents and businesses that cannot currently access faster fibre broadband to be able to do so through an open access network of Internet Service Providers.

6.3.3 It means that at least 98% of homes and businesses in the borough can access superfast broadband (24Mbps+) by the end of August 2018.

6.4 Telecoms

6.4.1 There has been 0 applications for new telecoms apparatus in the rural area.

7 Built Environment and Heritage

7 Built Environment and Heritage

7 Built Environment and Heritage

7.1 Design Awards

7.1.1 No schemes have been awarded any design awards in the period 1 April 2017 - 31 March 2018.

7.2 Heritage

7.2.1 Telford & Wrekin benefits from a rich and diverse heritage. This heritage includes the Ironbridge Gorge World Heritage Site, urban Conservation Areas of Newport, Wellington and Horsehay, rural Conservation Areas in Edgmond, High Ercall and Wrockwardine together with numerous listed buildings, locally listed buildings, Scheduled Ancient Monuments and archaeological features. This built heritage is important not only for its historical significance but also in its contribution to community identity, education and environmental quality.

7.2.2 Currently the main indicator for heritage is the change in extent of Conservation Areas. This is shown in Conservation Areas.

Table 7.1 Conservation Areas (status as of March 2018)

Conservation Area	Hectares	Character Appraisal	Management Proposals
Edgmond	24.2	Yes	Yes
Newport	22.4	No	No
Wrockwardine	26.9	Yes	Yes
High Ercall	9.5	Yes	Yes
Wellington	8.2	Yes	Yes
Horsehay	25.1	Yes	Yes
Severn Gorge	417.9	Yes	Yes
Borough	534.2	-	-

7.2.3 Conservation Areas also shows which of the Conservation Areas have Character Appraisals and Management Proposals. Over 86% of the Conservation Areas (over 96% in terms of area) are both in place. The Newport Conservation Area Character Appraisal is forthcoming.

8 Environmental Resources

8 Environmental Resources

8 Environmental Resources

8.1 Renewable Energy

8.1.1 The Local Plan recognises and promotes sustainable planning and design through both passive (such as accessible locations, layout, building orientation and energy efficiency) and promotes active (such as the use of photovoltaic panels) measures.

8.1.2 Development which has involved the delivery and use of renewable energy forms part of this objective.

8.1.3 The Council runs its own solar farm at Wheat Leasows. In addition, it has approved three planning applications as detailed below in the period 1 April 2017 - 31 March 2018. The permissions provide a further indication of the borough's commitment to renewable energy. This number remains the same as the number approved in last year and the baseline year of 2015.

Table 8.1 Renewable Energy Schemes approved in 2017-2018

Application Number	Description
TWC/2016/1154	Installation of solar panels
TWC/2017/0162	Installation of 3 number solar hot water tube panels and 3 number solar tubes
TWC/2018/0090	Installation of ground mounted photo voltaic solar panels

8.2 Minerals

8.2.1 Shropshire Council and the Borough of Telford & Wrekin are combined as a single sub region for the purpose of aggregates supply. The Government requires that Mineral Planning Authorities should plan for a steady and adequate supply of aggregates.

Primary aggregates

8.2.2 The below is a summary of the Local Aggregates Assessment (LAA) for Shropshire and Telford & Wrekin, which is available fully within Shropshire Council's Monitoring Report 2017-18. The majority of aggregate production takes place in the area administered by Shropshire Council. In the borough, there are currently no sand and gravel workings, but there is crushed rock from a site at Leaton, West of Wellington. The site contributes about a quarter of the annual sales. Both administered areas contain facilities where construction, demolition and excavation waste is recycled to produce aggregates. Headline performance indicators for minerals are illustrated in the table below.

Table 8.2 Headline Mineral Monitoring Indicators 2017-18

	Sand and gravel	Crushed rock
2017 production	0.67 million tonnes	3.09 million tonnes
3-year average	0.71 million tonnes	2.85 million tonnes

8 Environmental Resources

	Sand and gravel	Crushed rock
10-year average	0.68 million tonnes	2.47 million tonnes
Informatives	Production guideline based on 10-year average. No other relevant local information which indicates deviation from this average is currently required.	Production guideline based on 10-year average. No other relevant local information which indicates deviation from this average is required.
Reserves	11.34 million tonnes	113.2 million tonnes
Landbank	16.7 years	45.83 years
Minimum Landbank Required	7.00 years	10.00 years
Informatives	Despite having a large landbank there are potential issues regarding productive capacity due to about 70% of reserves being contained within sites which have been unworked for over 5 years. The Shropshire Local Plan (2015) allocates additional resources at three sites and the release of further resources is expected through windfall applications or the current Local Plan Review.	N/A

Secondary and recycled aggregates

8.2.3 Figures for secondary and recycled materials used as aggregates are currently only collected nationally and sub-nationally. The most recent information indicates that 4.37 million tonnes of construction and demolition waste was generated in Shropshire, Staffordshire and Telford & Wrekin in 2005 (Survey of Arising and Use of Alternatives to Primary Aggregates in England [CLG 2007]). Limited information is available for Shropshire and Telford & Wrekin specifically. Environment Agency waste data suggests that about 0.4 million tonnes of inert waste generated in the two areas was handled at licensed waste management facilities in 2016, largely in Shropshire and neighbouring areas.

Mineral Safeguarding Policy

8.2.4 0 number of applications were approved contrary to the mineral safeguarding policy.

8 Environmental Resources

8.3 Waste

8.3.1 As can be seen from amount of municipal waste arising in Telford & Wrekin, there has been a decrease in the total of waste arisings between the calendar year 2017 to 2018.

Table 8.3 Amount of municipal waste arising in Telford & Wrekin

	Year	Landfill	Incineration with EfW*	Incineration without EfW*	Recycled/composted	Other	Total waste arisings
Amount of waste arisings in tonnes	2007	56153.80	0	0	29727.07	0	85880.87
	2008	63216.15	122.83	0	30214.81	0	93553.79
	2009	56693.18	89.83	0	31560.96	0	88343.97
	2010	54390.18	61.44	0	35064.21	0	89519.99
	2011	51520.03	58.74	0	37103.94	0	88682.71
	2012	50589.32	82.31	0	35346.84	0	86018.47
	2013	46819.80	196.63	0	34995.94	0	82110.39
	2014	45479.54	74.28	0	36733.24	0	82287.06
	2015	44180.63	745.71	0	37975.10	0	85822.71
	2016	44411.85	1,279.56	0	38742.09	0	87095.54
	2017	23955.84	21,295.74	0	38326.31	0	88030.34
	2018	1120.57	41,535.62	0	34737.40	0	85424.93

* - EfW is energy from waste, for example as electricity or heating.

8.3.2 The recycled/composted column includes the re-use figure. Since 2007 the amount of waste sent to landfill has fallen whilst the amount of waste recycled, re-used or composted has increased. Please note the large change in landfill and incineration tonnages for 2017 and 2018 is due to Veolia taking over recycling and processing of municipal waste and using incineration as their primary outcome instead of landfill. Local incineration is mainly provided by sites in Shrewsbury and Staffordshire.

8.4 Water Quality and Flood Risk

8.4.1 National guidance set out in the National Planning Policy Framework (NPPF) states inappropriate development in flood risk areas should be avoided by directing development away from areas of highest risk, but where development is required making it secure without increasing flood risk elsewhere. The Environment Agency provide advice on applications related to flood risk or water quality via their website.

8.4.2 In respect of Telford & Wrekin, no planning permissions were granted which were contrary to Environment Agency advice on flooding or water quality.

8.4.3 The Council acknowledge that the Environment Agency state that planning application reference TWC/2017/0569 was permitted contrary to the Environment Agency's advice.

8 Environmental Resources

8

8.4.4 However, this application remains open without a decision. Following initial concerns raised by the Environment Agency, the developer submitted further details which the Environment Agency have supported subject to conditions.

8.5 Agricultural Land Quality

8.5.1 0 number of applications have been refused on agricultural land quality.

9 Future Monitoring

9 Future Monitoring

9

9 Future Monitoring

9.1 Indicators

9.1.1 There are some indicators where data is not available. These indicators are listed below.

Table 9.1

Indicator	Reason
Number of agreements with developers to support local employment and number of apprenticeships	No data currently available
Mix of homes in all major planning applications at reserved matters stage	No data currently available
New developments in Telford Town Centre, Market Towns and District Centres with a mix of uses	No data currently available

10 Development Plan Documents

10 Development Plan Documents

10 Development Plan Documents

10.0.1 The Council's development plan at April 2018 comprises the following documents:

- Telford & Wrekin Local Plan (2018)
- The Madeley Neighbourhood Development Plan (2015)
- The Waters Upton Neighbourhood Development Plan (2016)

10.0.2 The Council will also prepare new Supplementary Planning Documents (SPDs) to support the Local Plan.

10.0.3 No SPD's were adopted this year.

10.1 Local Development Scheme Milestones

10.1.1 The Local Development Scheme (LDS) explains which planning policy documents make up the Telford & Wrekin Development Plan and is a requirement of the Planning and Compulsory Purchase Act 2004 (as amended). The LDS identifies which development plans will be produced, in which order and when.

10.1.2 The current LDS is available on the Council's website via the following link http://www.telford.gov.uk/info/20172/planning_policy_and_strategy/542/local_development_scheme.

11 Duty to Cooperate

11 Duty to Cooperate

11

11 Duty to Cooperate

11.0.1 Under Section 110 of the Localism Act 2011 local authorities have a legal duty to engage constructively, actively and on an on-going basis in regards to strategic cross boundary matters.

11.0.2 The Council will continue to work constructively, actively and on an on-going basis with its neighbours on strategic matters that have cross-boundary implications.

12 Neighbourhood Planning

12 Neighbourhood Planning

12 Neighbourhood Planning

12.0.1 Town and Parish Councils (or Neighbourhood Forums in other areas without parishes) can now prepare Neighbourhood Development Plans and Neighbourhood Development Orders. A Neighbourhood Development Plan can enable communities to establish general planning policies for development and use of land in their area. It can be detailed, or general, depending on what local people want and forms part of the Development Plan for Telford & Wrekin. To be put in place a plan needs to pass a number of tests; it must conform to national planning policies and the strategic policies of Telford & Wrekin Council.

12.0.2 In accordance with the Localism Act (2011) and Neighbourhood Planning (General) Regulations 2012 the Parishes prepare these plans, rather than Telford & Wrekin Council, although Telford & Wrekin Council offers advice and assistance.

12.0.3 The borough currently has two made Neighbourhood Development Plans and six designated Neighbourhood Development Plan Areas, which are working towards the production of a Neighbourhood Development Plan for their area (see the Map below).

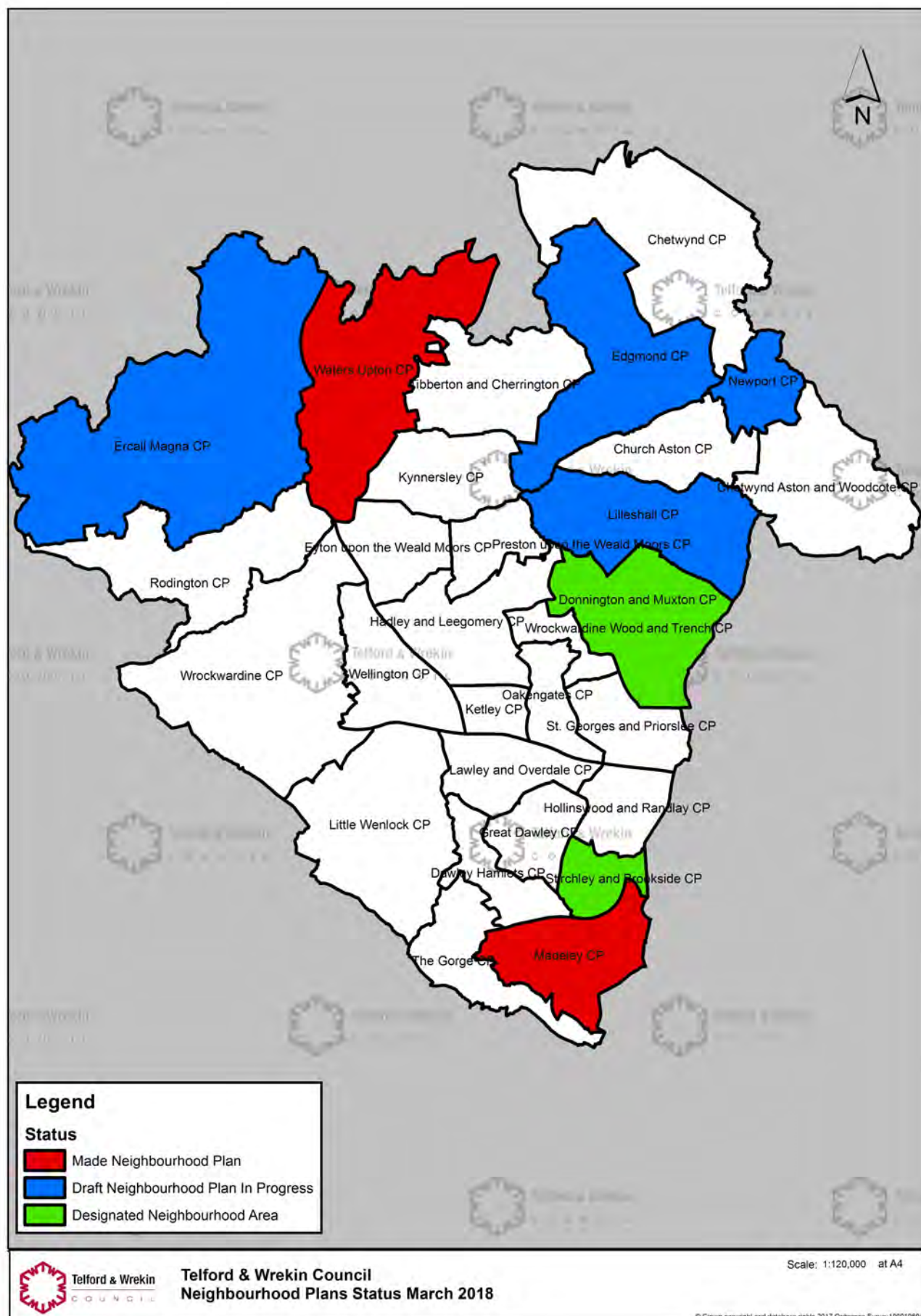
12.0.4 Madeley Town Council made the first neighbourhood plan in the borough, Waters Upton was the second. These Neighbourhood Plans are now used to inform planning decisions in their respective areas.

12.0.5 In October 2013, Stirchley & Brookside Parish Council applied to designate the Parish area of Stirchley & Brookside as a neighbourhood area outside of the Fronrunner scheme and were designated in January 2014. Ercall Magna Parish, Lilleshall Parish, Edgmond Parish, Newport Town Council and Donnington and Muxton Parish also have designated areas and are preparing Neighbourhood Development Plans for their respective areas for Neighbourhood Planning. At this stage, no Neighbourhood Development Orders are proposed in Telford & Wrekin. Progress was made by a number of parishes during 2017/18 towards making their plans.

12.0.6 Further details on progress of those Neighbourhood Development Plans under preparation in the borough is provided on the Council's website as well as on the relevant Parishes own websites, where possible.

12 Neighbourhood Planning

Picture 1



13 Appendix

13 Appendix

13 Appendix

13.0.1 Attached below are appendices which show the raw data which has been collated in the tables included in this report. Please note that more recent planning applications with the TWC prefix are reverted back to W prefix. For example TWC/2014/0001 becomes W2014/0001.

Appendix 1 - Residential Plots Completed in 2017/18

Ward Name

	Application No	Address	Previous Use	Hectares	Completed
Arleston					
	W2015/0577	Land between 5 and 6 Forester Grove, Arleston, Telford, Shropshire	GR	0.00	4
	W2017/0334	Land rear of 18-22 John Broad Avenue, Arleston, Telford, Shropshire	OB		2
Church Aston and Lilleshall					
	W2015/0117	Pave Lane Farm, Pitchcroft Lane, Woodcote, Newport, Shropshire, TF10 9AX	FR	0.00	1
	W2017/0086	Land adjoining St Lawrences Church, Preston upon the Weald Moors, Telford, Shropshire	FR		1
	W2013/0312	9 Woodcote, Telford, Shropshire, TF10 9BW	GR		4
	W2013/0855	Land to the rear of Willow Tree Cottage, Station Road, Newport, Shropshire	GR		24
	W2015/0151	Land adjacent The Barns, Dark Lane, Church Aston, Newport, Shropshire	GR	0.00	5
	W2015/0188	Land adjacent 7 Hillside, Lilleshall, Newport, Shropshire	GR	0.00	1
	W2015/0354	Land adjacent 13 Primrose Drive, Church Aston, Newport, Shrosphire	GR	0.00	1
College					
	W2017/0642	37 Park Street, Wellington, Telford, Shropshire, TF1 3AE	FE		4
	W2015/0905	Park House, 41 Park Street, Wellington, Telford, Shropshire, TF1 3AE	FE	0.00	1
	W2008/0227	Land at, Urban Gardens, Wellington, Telford, Shropshire.	OB	0.06	1
	W2010/0487	Charlton Arms Hotel, Church Street, Wellington, Telford, Shropshire, TF1 1DG	OB	0.00	11
	W2015/1022	13 Market Square, Wellington, Telford, Shropshire, TF1 1BU	OB		1
Cuckoo Oak					
	W2016/0460	Site of Wendover, Hills Lane, Madeley, Telford, Shropshire	FR		5
	W2016/0691	Wendover, Hills Lane, Madeley, Telford, Shropshire, TF7 4BY	FR		-1

FR - Former Residential FE - Former Employment OB - Other Brownfield GR - Greenfield

Ward Name

	Application No	Address	Previous Use	Hectares	Completed
<i>Dawley and Aqueduct</i>					
	W2017/0762	The Talbot Inn, 26 High Street, Dawley, Telford, Shropshire, TF4 2EX	OB		1
<i>Dawley Magna</i>					
	W2015/0217	Site A, Pool Hill Road, Horsehay, Telford, Shropshire	GR	0.00	14
	W2016/0842	Lord Hill Inn, High Street, Dawley, Telford, Shropshire, TF4 2EX	OB		1
<i>Donnington</i>					
	W2016/0244	Site of 1 Wellington Road, Donnington, Telford, Shropshire	FR		8
	W2016/0064	Land adjacent Copperlea, 2 Wrekin Drive, Donnington, Telford, Shropshire	GR		14
	W2015/0978	Site of 72B Furnace Lane, Trench, Telford, Shropshire	OB		6
	W2016/0199	Land corner of Queens Road/Church Road, Donnington, Telford, Shropshire	OB		7
<i>Edgmond</i>					
	W2017/0227	Site of 10 Chetwynd Road, Edgmond, Newport, Shropshire	FR		1
	W2014/0808	12 Marsh Road, Edgmond, Newport, Shropshire, TF10 8EP	FR	0.00	1
	W2015/0784	Land West Of Beech Hill, Edgmond Road, Newport, Shropshire	GR	0.00	3
	W2016/0624	Site of 1 Tea Kettle Row, Plantation Road, Tibberton, Newport, Shropshire	GR		1
	W2016/0560	Land between Beech Hill & Blue House Barns, Chetwynd Road, Newport, Shropshire	GR		7
	W2016/0086	Land adjacent 48 Shrewsbury Road, Edgmond, Newport, Shropshire	GR	0.00	1
	W2014/0401	Land adjacent Ingleside, 1 Edgmond Road, Newport, Shropshire	GR	0.00	12
	W2014/0389	54 Newport Road, Edgmond, Newport, Shropshire, TF10 8HE	GR	0.00	1
	W2012/0961	Land at, Orchard House, Tibberton, Newport, Shropshire	GR		10
	W2015/0951	Land adjacent 81 Newport Road, Edgmond, Newport, Shropshire	GR	0.00	1

FR - Former Residential FE - Former Employment OB - Other Brownfield GR - Greenfield

Ward Name

	Application No	Address	Previous Use	Hectares	Completed
Ercall	W2015/1079	Agricultural buildings adjacent Sambrook Hall Farm, Sambrook, Newport, Shropshire	OB		1
	W2016/1197	Land to the rear of 3-7 Golf Links Lane, Wellington, Telford, Shropshire	EDU		4
	W2013/0938	Land off Holyhead Road, Wellington, Telford, Shropshire, TF6 5AB	GR	0.00	15
Ercall Magna	W2007/0986	22, Waters Upton	FR	0.10	1
	W2014/0661	Hillcrest, Sytch Lane, Waters Upton, Telford, Shropshire, TF6 6NR	FR	0.14	1
	W2014/0993	The Firs, Rowton, Telford, Shropshire, TF6 6QY	FR	0.00	1
	W2014/1093	Site of Lyndale, Middle Lane, Cold Hatton Heath, Telford, Shropshire	FR	0.00	1
	W2015/0462	Land South Of Sunnyside Farm, Ellerdine Heath, Telford, Shropshire,	GR	0.00	1
	W2015/0868	Land West of Alport, Middle Lane, Cold Hatton, Telford, Shropshire	GR	0.00	1
	W2014/0888	Land adjacent to The Old Rectory, Waters Upton, Shropshire.	GR	0.00	7
	W2013/0693	Land adjacent to 8 Heath Court, Cliff Crescent, Ellerdine, Telford, Shropshire	GR	0.00	10
Hadley and Leegomery	W2013/0720	Land at, Sommerfeld Road, Hadley, Telford, Shropshire,	FE	6.04	13
	W2014/0765	1-3 Castle Lane, Hadley, Telford, Shropshire, TF1 6RD	FR	0.00	11
	W2016/0772	Site of 15 - 32, Hall Gardens, Hadley, Telford, Shropshire	FR		-18
	W2013/1003	Land at Hadley Park West, (off Okehampton Road), Leegomery, Telford, Shropshire,	GR	7.12	28
	W2014/0221	Former Blockleys Brick Ltd, Land off Sommerfeld Road, Trench Lock, Telford, Shropshire, TF1 5RY	GR	0.00	20
	W2014/0756	Land adjacent 1-3 Castle Lane, Hadley, Telford, Shropshire	GR	0.00	3
	W2014/0796	Land North of, Okehampton Road, Leegomery, Telford, Shropshire	GR	0.00	5

FR - Former Residential FE - Former Employment OB - Other Brownfield GR - Greenfield

Ward Name

	Application No	Address	Previous Use	Hectares	Completed
	W2015/0058	Land North of, Okehampton Road, Leegomery, Telford, Shropshire,	GR	0.00	6
	W2015/0225	Land South of, 52 Horton Lane, Horton, Telford, Shropshire	GR	0.00	1
	W2016/0527	Site of Beveley House, 82 Beveley Road, Oakengates, Telford, Shropshire	GR		1
	W2016/0604	Site of Hadley Centre Car Park, Haybridge Road, Hadley, Telford, Shropshire	OB		25
<i>Haygate</i>					
	W2016/0428	Land adjacent The Croft, Haygate Road, Wellington, Telford, Shropshire	GR		1
	W2015/0801	22 Market Street, Wellington, Telford, Shropshire, TF1 1DT	OB	0.00	6
<i>Horsehay and Lightmoor</i>					
	W2014/0237	Land at Doseley Works, Doseley, Telford, Shropshire, TF4 3BX	GR	0.00	40
	W2014/0998	Land adjacent Windermere House, Farm Lane, Horsehay, Telford, Shropshire	GR	0.00	10
	W2014/1072	Land north of Lightmoor Way, Lightmoor Village, Telford, Shropshire	GR	0.00	45
	W2015/0515	Land adjacent Greenhurst, 14 St Lukes Road, Doseley, Telford, Shropshire,	GR	0.00	1
	W2012/0419	Lawley Phase 6, Dawley Road, Lawley , Telford, Shropshire.	GR	11.05	12
	W2012/0981	The Finney, 13 Burroughs Bank, Lightmoor, Telford, Shropshire, TF4 3QS	OB	0.16	1
	W2016/0660	Lawley Phase 7, Lawley, Telford, Shropshire	OB		31
<i>Ironbridge Gorge</i>					
	W2016/0834	Land adjacent The White Horse Inn, Lincoln Hill, Ironbridge, Telford, Shropshire	GR		1
	W2017/0908	27 High Street, Ironbridge, Telford, Shropshire, TF8 7AD	OB		1
<i>Ketley and Oakengates</i>					
	W2015/0851	Rose Cottage, Hadley Road, Oakengates, Telford, Shropshire, TF2 6HL	FR	0.00	-1
	W2016/1077	Woodland House, Sunnyside Road, Ketley Bank, Telford, Shropshire, TF2 0AA	GR		1

FR - Former Residential FE - Former Employment OB - Other Brownfield GR - Greenfield

Ward Name

	Application No	Address	Previous Use	Hectares	Completed
	W2014/0531	Land to the rear of Bush House, Mossey Green, Ketley Bank, Telford, Shropshire	GR	0.00	1
	W2014/0094	Land adjacent, 9 Weavers Rise, Ketley Bank, Telford, Shropshire	GR	0.00	1
	W2013/0096	Ketley Millennium Village, Holyhead Road, Ketley, Telford, Shropshire	OB	11.09	50
	W2011/0769	The Homelands, Mossey Green, Ketley Bank, Telford, Shropshire, TF2 0DN	OB		2
<i>Lawley and Overdale</i>					
	W2016/0152	Site of 1 to 30 Powis Place, Dawley Bank, Telford, Shropshire	FR	0.00	-30
	W2011/0488	Phases 3 & 4 Lawley Village, Lawley Drive, Lawley, Telford,	GR	25.98	3
	W2015/0177	Land off Park Road/Royal Way, Malinslee, Telford, Shropshire	GR	0.00	81
	W2015/0233	Lawley Phase 8, Lawley, Telford, Shropshire	GR	0.00	164
<i>Madeley</i>					
	W2016/0165	Former Madeley Court School, Land off Parkway, Madeley, Telford, Shropshire	EDU		17
	W2016/0237	Land to the rear and side of 71 High Street, Madeley, Telford, Shropshire	GR		1
<i>Malinslee</i>					
	W2015/0997	Former Malinslee Primary School, Matlock Avenue, Dawley, Telford, Shropshire	EDU	0.00	67
	W2016/0226	Land adjacent 83 Peveril Bank, Dawley Bank, Telford, Shropshire	FR		1
	W2014/0329	Land adjacent Yeatesville, 15 St. Leonards Road, Malinslee, Telford, Shropshire	GR	0.00	1
<i>Malinslee and Dawley Bank</i>					
	W2017/0204	Land adjacent Belvedere Court, Hinkshay Road, Dawley, Telford, Shropshire	FE		8
	W2017/0156	Site Of Hazeldene, 22 Moor Road, Dawley, Telford, Shropshire	FR		-1
<i>Muxton</i>					
	W2017/0232	Site of 68 Wellington Road, Muxton, Telford, Shropshire	FR		-1

FR - Former Residential FE - Former Employment OB - Other Brownfield GR - Greenfield

Ward Name

	Application No	Address	Previous Use	Hectares	Completed
	W2015/0597	Abbey Farm, Abbey Road, Lilleshall, Newport, Shropshire, TF10 9HW	GR	0.00	1
<i>Newport North</i>					
	W2014/0036	Kings Head Mobile Home Park, Green Lane, Newport, Shropshire	GR	0.00	2
<i>Newport North and West</i>					
	W2017/0257	Site of 65 Forton Road, Newport, Shropshire	FR		-1
	W2016/0816	Royal Victoria Hotel, St Marys Street/16 & 17 Water Lane, Newport, Shropshire	OB		-2
	W2017/0528	Unit 1, 73 High Street, Newport, Shropshire, TF10 7AU	OB		1
<i>Newport South</i>					
	W2014/0333	Land corner of, Stafford Road/A41, Newport, Shropshire	FE	4.87	36
	W2016/0535	Site of Units 3, 3A, 4, 5, 9, 10 & Yard 5, Springfield Industrial Estate, Station Road, Newport, Shropshire	FE		33
	W2016/0577	Land adjacent 10 Primrose Drive, Church Aston, Newport, Shropshire	GR		1
<i>Newport South and East</i>					
	W2016/0259	Site of 18, 20, 22 & 24 Meadow Road, Newport, Shropshire	FR		4
<i>Newport West</i>					
	W2016/0059	Phase 4, Land North, East & South of Aston Grove, off Wellington Road, Newport, Shropshire	FE		70
	W2016/0203	Land rear of 23 High Street, Newport, Shropshire	FE		5
<i>Priorslee</i>					
	W2005/1187	LAND TO THE REAR OF OAKDALE, MOSS ROAD,	FR	0.04	1
	W2014/0656	Land Adjacent Stone House, Shifnal Road, Priorslee, Telford, Shropshire	GR	0.00	6
	W2015/0028	Land rear of 10-21, Frome Way, Donnington, Telford, Shropshire	GR	0.00	25
	W2016/0162	Land North of, Keepers Crescent & Daisy Bank Drive, St Georges, Telford, Shropshire	GR		17

FR - Former Residential FE - Former Employment OB - Other Brownfield GR - Greenfield

Ward Name

	Application No	Address	Previous Use	Hectares	Completed
St Georges					
	W2017/0835	The Old Vicarage, Priorslee Road, St Georges, Telford, Shropshire, TF2 9EA	FR		-1
	W2014/0736	The Red Lion Inn, New Road, Wrockwardine Wood, Telford, Shropshire, TF2 7AA	OB	0.00	2
	W2017/0927	75 West Street, St Georges, Telford, Shropshire, TF2 9HY	OB		2
	W2017/0927	75 West Street, St Georges, Telford, Shropshire, TF2 9HY	OB		-1
	W2017/0169	32 Stafford Street, St Georges, Telford, Shropshire, TF2 9JQ	OB		1
	W2016/1122	77 & 79 West Street, St Georges, Telford, Shropshire	OB		1
	W2016/1122	77 & 79 West Street, St Georges, Telford, Shropshire	OB		-2
Wrockwardine					
	W2015/0024	The Piggeries, Grove Lane, Rodington, Telford, Shropshire	FE	0.00	1
	W2016/1164	Land Adjacent, 8 The Avenue, Sugden, Telford, Shropshire	FR		1
	W2013/0649	Land to rear of Holly Acres, Long Lane, Telford, Shropshire TF6 6HD	GR	0.00	4
	W2014/0065	Land adjacent, 10 Rushmoor, Telford, Shropshire	GR	0.00	2
	W2015/0438	Land North of Dunelm, Rodington Heath, Telford, Shropshire	GR	0.00	6
	W2016/0025	Home Farm Cottage, Malt House Bank, Little Wenlock, Telford, Shropshire, TF6 5BN	GR	0.00	1
	W2016/0332	Land West of The Cedars, Rodington, Telford, Shropshire	OB		1
Wrockwardine Wood and Trench					
	W2016/1099	Site of former Wrockwardine Wood Arts College, New Road, Wrockwardine Wood, Telford, Shropshire	EDU		13
	W2016/0615	Site of 9-32 & Garages, Gordon Road, Trench, Telford, Shropshire	FR		31
TOTALS				66.64	1,067

FR - Former Residential FE - Former Employment OB - Other Brownfield GR - Greenfield

Appendix 2 - Residential Sites Under Construction and Plots Started 2017/18

Ward Name	Application	Address	Previous Use	Ha	Total Comp	Comp 17/18	Not Started	Started
FULL GRANTED								
Admaston and Bratton								
	W2016/1185	Site of Silverdale, 49 Station Road, Admaston, Telford, Shropshire	FR		0	0	0	1
Church Aston and Lilleshall								
	W2014/0492	Lubstree Park, Humber Lane, Telford, Shropshire, TF2 8LW	FE	0.00	0	0	5	3
	W2013/0855	Land to the rear of Willow Tree Cottage, Station Road, Newport, Shropshire	GR		24	24	13	13
	W2016/0034	Amber House, Littlehales Road, Chetwynd Aston, Newport, Shropshire, TF10 9BF	GR	0.00	0	0	1	1
College								
	W2016/1029	Land adjacent Mill Cottage, Mill Lane, Wellington, Telford, Shropshire	FR		0	0	0	4
	W2007/0667	Telford Islamic Centre, 88, King Street, Wellington	OB	0.20	0	0	0	1
	W2017/0696	Site OF 27 & 31 High Street, Wellington, Telford, Shropshire	OB		0	0	0	1
	W2017/0779	Former Charlton Arms Hotel, 18 Church Street, Wellington, Telford, Shropshire	OB		0	0	0	8
	W2010/0487	Charlton Arms Hotel, Church Street, Wellington, Telford, Shropshire, TF1 1DG	OB	0.00	11	11	8	4
	W2008/0227	Land at, Urban Gardens, Wellington, Telford, Shropshire.	OB	0.06	1	1	0	2
	W2013/0306	27-31 High Street, Wellington, Telford, Shropshire, TF1 1JW	OB	0.00	0	0	0	12
Dawley and Aqueduct								
	W2016/0918	Site of Red Lion, 15 Holly Road, Little Dawley, Telford, Shropshire	OB		0	0	0	14
	W2017/0244	St Pauls Church, Aqueduct Road, Aqueduct, Telford, Shropshire,	OB		0	0	0	1
Dawley Magna								
	W2015/0618	Site of, 15 New Street, Dawley, Telford, Shropshire	GR	0.00	0	0	0	1
Donnington								
	W2015/0874	Land adjacent, 12 Jubilee Avenue, Donnington, Telford, Shropshire	GR	0.00	0	0	0	1
Dothill								
	W2016/0786	Site of 1 - 8 Burway Flats, Severn Drive & 1 - 8 Dee Close, Dothill, Telford, Shropshire	FR		0	0	0	12
Edgmond								
	W2014/0981	Swan Y Coed, Tibberton, Newport, Shropshire, TF10 8NN	GR	0.00	0	0	0	1

FR - Former Residential FE - Former Employment OB - Other Brownfield GR - Greenfield

Ward Name	Application	Address	Previous Use	Ha	Total Comp	Comp 17/18	Not Started	Started
Edgmond and Ercall Magna	W2016/0560	Land between Beech Hill & Blue House Barns, Chetwynd Road, Newport, Shropshire	GR		7	7	0	12
	W2015/0619	Land west of Cherrington Manor, Cherrington, Newport, Shropshire	GR	0.00	0	0	0	1
	W2017/1029	Land rear of 6 & 7 Blue House Barns, Chetwynd Road, Newport, Shropshire	GR		0	0	0	2
	W2017/0459	Woodcoat, Walton Avenue, High Ercall, Telford, Shropshire, TF6 6AJ	OB		0	0	0	1
	W2016/1130	Lower House Farm, Waters Upton, Telford, Shropshire, TF6 6PB	OB		0	0	0	3
	W2017/0346	Land adjacent 12 Tibberton, Newport, Shropshire	OB		0	0	0	2
Ercall								
Ercall Magna	W2017/0547	Land adjacent, 332 Holyhead Road, Wellington, Telford, Shropshire	FR		0	0	0	1
	W2013/1038	The Quarry, Waters Upton, Telford, Shropshire, TF6 6NP	FE		0	0	0	1
	W2016/0986	Eyton Hall, The Coach House, Eyton, Telford, Shropshire	FR		0	0	0	1
	W2018/0113	Land adjacent 12 Tibberton, Newport, Shropshire	FR		0	0	0	1
	W2014/0733	Land South of White House Farm, Cold Hatton, Telford, Shropshire	GR	0.00	0	0	1	1
	W2015/0469	Builders Yard and land adjacent Fair View, Stars Lane, Cold Hatton, Telford, Shropshire	GR	0.00	0	0	0	2
	W2015/0405	Heath House, 17 Middle Lane, Cold Hatton Heath, Telford, Shropshire, TF6 6QA	GR	0.00	0	0	0	1
	W2018/0006	Land adjoining 19 Tibberton, Newport, Shropshire	GR		0	0	0	1
	W2016/1171	Site Of Meeson Hall, Meeson, Telford, Shropshire	OB		0	0	0	6
Hadley and Leegomery								
Haygate	W2017/0105	Garages between, 129 & 131 Crescent Road, Hadley, Telford, Shropshire	FR		0	0	0	4
	W2012/0493	Land To The Rear Of 26a-32, Mafeking Road, Hadley, Telford, Shropshire,	FR	0.00	0	0	0	4
	W2016/0772	Site of 15 - 32, Hall Gardens, Hadley, Telford, Shropshire	FR		0	0	0	12
	W2008/0737	Manor Heights, Haybridge Road, Haybridge Road, Hadley, Telford, Shropshire.	FR	0.43	0	0		4
	W2009/0546	5, Castle Street, Hadley, Telford, Shropshire.	GR	0.02	0	0	0	2
	W2014/1151	Telford Millennium Community (Part of Phase 4), Ketley, Telford, Shropshire	GR		0	0	12	54
	W2015/0225	Land South of, 52 Horton Lane, Horton, Telford, Shropshire	GR	0.00	1	1	0	1
	W2017/0514	Land junction of, Alexandra Road/Haygate Road, Wellington, Telford, Shropshire	FE			0	0	24
W2014/1098	23 Walker Street, Wellington, Telford, Shropshire, TF1 1BD	OB	0.00	0	0	0	10	
	FR - Former Residential	FE - Former Employment	OB - Other Brownfield	GR - Greenfield				

Ward Name	Application	Address	Previous Use	Ha	Total Comp	Comp 17/18	Not Started	Started
	W2015/0662	11 - 13 Crown Street, Wellington, Telford, Shropshire, TF1 1LP	OB	0.00	0	0	0	2
Horsehay and Lightmoor								
	W2015/0255	Site of Adamson House, Bridge Road, Horsehay, Telford, Shropshire	FE	0.00	0	0	6	4
	W2012/0851	Land adjacent to, 34, Wellington Road, Horsehay, Telford, Shropshire.	FR	0.09	0	0	0	1
	W2014/0182	1 Glendale, Lawley Village, Telford, Shropshire, TF4 2PJ	FR	0.00	0	0	0	1
	W2011/0993	Land adjacent, 4 St Lukes Road, Doseley, Telford, Shropshire, TF4 3BE	GR	0.00	0	0	0	1
	W2014/0998	Land adjacent Windermere House, Farm Lane, Horsehay, Telford, Shropshire	GR	0.00	10	10	0	3
	W2017/0395	Annexe, Hartfield House, Pool Hill Road, Horsehay, Telford, Shropshire, TF4 3AS	OB		0	0	0	1
Ironbridge Gorge								
	W2013/0961	Garage/annex adjacent to, Laburnum Cottage, Woodlands Road, Ironbridge, Telford, Shrops	FR	0.00	0	0	1	0
	W2016/0091	Land adjacent The Old Toll House, High Street, Coalport, Telford, Shropshire	GR		0	0	0	1
	W2012/0485	Land Adjacent To, Humay, Hodge Bower, Ironbridge, Telford, Shropshire, TF8 7QQ	GR	0.00	0	0	0	1
	W2014/0272	Ivydale, High Street, Coalport, Telford, Shropshire, TF8 7HZ	GR	0.00	0	0	0	12
	W2015/0672	Site of Woodlands Farm, Beech Road, Ironbridge, Telford, Shropshire	GR	0.00	0	0	0	2
	W2015/0924	Land adjacent & rear of Benbrook, Strethill Road, Coalbrookdale, Telford, Shropshire	GR	0.00	0	0	0	1
	W2014/0772	Sutton Wood Farm, Sutton Bank, Coalport, Telford, Shropshire, TF11 9NJ	OB			0	3	1
	W2014/0055	Crown Inn, 10 Hodge Bower, Ironbridge, Telford, Shropshire, TF8 7QG	OB			0	7	
	W2014/0212	The Grove Inn, Wellington Road, Coalbrookdale, Telford, Shropshire, TF8 7DX	OB	0.00	0	0	0	7
	W2017/0908	27 High Street, Ironbridge, Telford, Shropshire, TF8 7AD	OB		1	1	0	1
Ketley and Oakengates								
	W2013/0222	7 Oxford Street, Oakengates, Shropshire	FE	0.20	0	0	1	0
	W2013/0330	17 Vicar Street, Oakengates, Telford, Shropshire, TF2 6BJ	FR	0.11	-1	0	0	1
	W2014/0261	Land north of Industry Nightclub, off Chapel Street, Oakengates, Telford, Shropshire	GR	0.00	0	0	0	3
	W2014/1058	Land rear of 8 Ketley Vallens, Ketley, Telford, Shropshire	GR	0.00	0	0	0	3
	W2015/0328	Land adjacent 40 Holyhead Road, Oakengates, Telford, Shropshire	GR	0.00	0	0	1	1
	W2016/0687	Land opposite Pear Tree Bridge Inn, Holyhead Road, Oakengates, Telford, Shropshire	GR		0	0	0	11
	W2011/0769	The Homelands, Mossey Green, Ketley Bank, Telford, Shropshire, TF2 0DN	OB		5	2	8	0
	W2013/0096	Ketley Millennium Village, Holyhead Road, Ketley, Telford, Shropshire	OB	11.09	218	50	99	21
	W2016/0197	Site of The Stafford Arms, Main Road, Ketley Bank, Telford, Shropshire	OB		0	0	0	6

FR - Former Residential

FE - Former Employment

OB - Other Brownfield

GR - Greenfield

Ward Name	Application	Address	Previous Use	Ha	Total Comp	Comp 17/18	Not Started	Started
	W2015/1097	Land between 88 & View House 103 Holyhead Road, Ketley, Telford, Shropshire	OB		0	0	0	10
Lawley and Overdale								
	W2016/0236	Site of 1 - 30, Powis Place, Dawley Bank, Telford, Shropshire	FR		0	0	15	6
Madeley								
	W2016/0165	Former Madeley Court School, Land off Parkway, Madeley, Telford, Shropshire	EDU		17	17	0	36
	W2015/0881	Site of 11 Queen Street, Madeley, Telford, Shropshire	FR	0.00	0	0	2	1
	W2018/0065	Land adjacent Police Houses, 2 Park Lane, Woodside, Telford, Shropshire	GR		0	0	0	1
	W2016/0237	Land to the rear and side of 71 High Street, Madeley, Telford, Shropshire	GR		3	1	0	1
Madeley and Sutton Hill								
	W2017/0486	Land rear of 53, Park Street, Madeley, Telford, Shropshire	FR		0	0	0	1
Malinslee								
	W2015/0997	Former Malinslee Primary School, Matlock Avenue, Dawley, Telford, Shropshire	EDU	0.00	67	67	0	24
	W2016/0749	Land opposite Phoenix Academy, Duce Drive, Dawley, Telford, Shropshire	OB		0	0	0	18
Malinslee and Dawley Bank								
	W2017/0156	Site Of Hazeldene, 22 Moor Road, Dawley, Telford, Shropshire	FR		-1	-1	0	2
Muxton								
	W2016/0597	Site of Fernleigh, The Fields, Donnington, Telford, Shropshire	FR		0	0	0	1
	W2017/0232	Site of 68 Wellington Road, Muxton, Telford, Shropshire	FR		0	0	0	2
	W2017/0126	Site of Watling Street Farm, Grange Lane, Red Hill, Telford, Shropshire	OB		0	0	0	8
Newport East								
	W2016/0227	Land adjacent The Gables, 54 Stafford Road, Newport, Shropshire	GR		0	0	0	2
Newport North								
	W2014/0204	Land To The Rear Of, Nix Service Station, Forton Road, Newport, Shropshire, TF10 7JR	GR	0.00	0	0	0	7
Newport North and West								
	W2017/0257	Site of 65 Forton Road, Newport, Shropshire	FR		-1	0	0	1
	W2016/0816	Royal Victoria Hotel, St Marys Street/16 & 17 Water Lane, Newport, Shropshire	OB		-2	-2	28	0
Newport South								
	W2017/0095	1 & 2 The Maltings, Springfields, Newport, Shropshire, TF10 7EZ	FE		0	0	0	4

FR - Former Residential

FE - Former Employment

OB - Other Brownfield

GR - Greenfield

Ward Name	Application	Address	Previous Use	Ha	Total Comp	Comp 17/18	Not Started	Started
Newport West	W2015/0510	Land adjacent & rear of 11 & rear of Gable End, 9 Granville Avenue, Newport, Shropshire	GR	0.00	0	0	1	1
	W2014/1076	Land rear of 28 Beaumaris Road, Newport, Shropshire	GR	0.00	0	0	0	2
Oakengates and Ketley Bank								
Park	W2017/0599	Site of former Wrockwardine Wood Arts College, New Road, Wrockwardine Wood, Telford, S	EDU		0	0	0	8
	W2017/0454	Site of The Vineyard, North Road, Wellington, Telford, Shropshire	OB		0	0	0	14
Priorslee								
St Georges	W2016/0162	Land North of, Keepers Crescent & Daisy Bank Drive, St Georges, Telford, Shropshire	GR		17	17	4	19
	W2012/0243	The Hollies, Priorslee Village, Telford, Shropshire, TF2 9NW	GR		0	0	1	1
	W2014/0656	Land Adjacent Stone House, Shifnal Road, Priorslee, Telford, Shropshire	GR	0.00	12	6	0	2
	W2012/0993	Land adjacent 80, Freeston Avenue, St Georges, Telford, Shropshire,	GR	0.00	0	0	0	2
The Nedge	W2013/0053	Land adjacent, 14 The Nabb, St Georges, Telford, Shropshire, TF2 9BY	GR	0.00	0	0	0	3
	W2015/0116	Land adjacent, 2 Moss Road, Wrockwardine Wood, Telford, Shropshire	GR	0.35	0	0	0	2
	W2017/0169	32 Stafford Street, St Georges, Telford, Shropshire, TF2 9JQ	OB		1	1	0	0
	W2009/0326	Randlay Centre, Randlay Community Centre, Randlay, Telford, Shropshire.	OB	1.41	6	0	12	0
Woodside								
Wrockwardine	W2014/0323	Rough Park House, Woodside Avenue, Woodside, Telford, Shropshire, TF7 5PG	FR	0.00	5	0	0	18
	W2014/0429	A B C Day Nursery, The Village School, Wrockwardine, Telford, Shropshire, TF6 5DG	EDU	0.00	2		0	2
	W2016/1143	Land adjacent Falcon House, New Works Lane, Little Wenlock, Telford, Shropshire	FR		0	0	0	1
	W2016/1179	Site of Millcroft, Walcot, Telford, Shropshire	GR		0	0	0	1
	W2010/0017	Land at, Isombridge Farm, Isombridge, Shropshire.	GR	0.09	0	0	0	1
	W2013/0649	Land to rear of Holly Acres, Long Lane, Telford, Shropshire TF6 6HD	GR	0.00	6	4	0	6
	W2014/0805	The Patch, Land opposite 4 High Point, Little Wenlock, Telford, Shropshire, TF6 5BT	GR	0.00	0	0	1	1
	W2015/1037	Longdon Livery Centre, Tern Lane, Longdon On Tern, Telford, Shropshire, TF6 6LN	OB	0.00	0	0	0	1

FR - Former Residential FE - Former Employment OB - Other Brownfield GR - Greenfield

Ward Name	Application	Address	Previous Use	Ha	Total Comp	Comp 17/18	Not Started	Started
Wrockwardine Wood and Trench								
	W2010/0593	The Former Methodist Chapel, Chapel Terrace, Wrock	OB	0.00	1	0	4	0
	W2017/0437	The Second Club, 148 Trench Road, Trench, Telford, Shropshire, TF2 7DU	OB		0	0	0	3
	W2015/0949	Land east of The Blue Pig, Capewell Road, Trench, Telford, Shropshire	OB		0	0	0	21
					410	217	234	550
FULL REFUSED								
Ercall Magna								
	W2008/0059	TERN FARM, LONGDON-ON-TERN	GR	1.01	0	0	7	0
					0	0	7	0
OTHER								
Ercall Magna								
	W2016/0763	New Farm, Roden Lane, Roden, Telford, Shropshire, TF6 6BS	OB		1	0	0	1
					1	0	0	1
RESERVE MATTERS GRANTED								
Dawley and Aqueduct								
	W2014/0205	Windynook, Holly Road, Little Dawley, Telford, Shropshire, TF4 3JE	FR			0	0	1
Edgmond and Ercall Magna								
	W2016/1127	Land corner of Back Lane/Plantation Road, Tibberton, Newport, Shropshire	OB		0	0	17	8
Haygate								
	W2008/0108	Orleton Park, Orleton Lane, Wellington, Telford, Shropshire.	OB	6.84	0	0	165	0
					0	0	182	9
RESERVED MATTERS GRANTED								
Church Aston and Lilleshall								
	W2017/0086	Land adjoining St Lawrences Church, Preston upon the Weald Moors, Telford, Shropshire	FR		1	1	0	0
	W2015/0581	Land adjacent 9 Hillside, Lilleshall, Newport, Shropshire	GR	0.00	0	0	0	1
	W2016/0240	Land adjacent 9 Hillside, Lilleshall, Newport, Shropshire	GR		0	0	0	1
	W2014/0906	Land adjacent 57 Limekiln Lane, Lilleshall, Newport, Shropshire	GR	0.00	0	0	0	1
	FR - Former Residential	FE - Former Employment	OB - Other Brownfield	GR - Greenfield				

Ward Name	Application	Address	Previous Use	Ha	Total Comp	Comp 17/18	Not Started	Started
Edgmond	W2016/1138	Land adjacent Middle Farm, Off Field Aston Lane, Newport, Shropshire	OB		0	0	0	5
	W2016/0767	Land adjacent Grangefields, Hay Street, Tibberton, Newport, Shropshire	GR		0	0	0	2
	W2016/0249	Land adjacent Grangefields, Hay Street, Tibberton, Newport, Shropshire	GR		0	0	0	1
	W2015/0628	Land North Of The Lilacs, Longwithy Lane, Edgmond, Newport, Shropshire	GR	0.00	0	0	0	1
Edgmond and Ercall Magna								
	W2017/0118	Lightwood, Shrewsbury Road, Edgmond, Newport, Shropshire, TF10 8HX	FR		0	0	0	1
	W2017/0407	Site of Pear Tree House, Waters Upton, Telford, Shropshire	FR		0	0	0	3
	W2017/0494	Land adjacent 44 Cherrington Road, Tibberton, Newport, Shropshire	FR		0	0	0	1
	W2017/0747	Land between Rose Green & Swn Y Coed, Tibberton, Newport, Shropshire	FR		0	0	0	1
	W2017/0421	Site of 62 Plantation Road, Tibberton, Newport, Shropshire	OB		0	0	0	1
Ercall								
	W2016/1197	Land to the rear of 3-7 Golf Links Lane, Wellington, Telford, Shropshire	EDU		4	4	60	16
	W2017/0920	Site of 211 Holyhead Road, Wellington, Telford, Shropshire	FR		0	0	0	1
Ercall Magna								
	W2015/0734	Land adjacent Roden Hall, site of Llanhaven & The Bungalow, Roden Lane, Roden, Telford,	GR	0.00	0	0	0	3
	W2015/0910	Land adjoining Waters Upton Village Hall, Waters Upton, Telford, Shropshire	GR		0	0	0	4
Hadley and Leegomery								
	W2013/1003	Land at Hadley Park West, (off Okehampton Road), Leegomery, Telford, Shropshire,	GR	7.12	119	28	0	0
Haygate								
	W2017/0718	Site of Marycroft, Haygate Road, Wellington, Telford, Shropshire	FR		0	0	0	1
Horsehay and Lightmoor								
	W2012/0419	Lawley Phase 6, Dawley Road, Lawley , Telford, Shropshire.	GR	11.05	385	12	0	3
	W2014/1072	Land north of Lightmoor Way, Lightmoor Village, Telford, Shropshire	GR	0.00	45	45	141	14
	W2014/0237	Land at Doseley Works, Doseley, Telford, Shropshire, TF4 3BX	GR	0.00	101	40	72	19
	W2016/0660	Lawley Phase 7, Lawley, Telford, Shropshire	OB		31	31	139	97
Lawley and Overdale								
	W2015/0233	Lawley Phase 8, Lawley, Telford, Shropshire	GR	0.00	253	164	202	87

FR - Former Residential FE - Former Employment OB - Other Brownfield GR - Greenfield

Ward Name	Application	Address	Previous Use	Ha	Total Comp	Comp 17/18	Not Started	Started
Malinslee and Dawley Bank								
	W2017/0204	Land adjacent Belvedere Court, Hinkshay Road, Dawley, Telford, Shropshire	FE		8	8	80	64
Newport West								
	W2016/0059	Phase 4, Land North, East & South of Aston Grove, off Wellington Road, Newport, Shropshir	FE		104	70	0	30
	W2013/0928	Phase 1, Land off Wellington Road, Newport, Shropshire	GR	3.47	59	0	2	0
Oakengates and Ketley Bank								
	W2017/0434	Site of Clifton Cottage, Hillside Road, Ketley Bank, Telford, Shropshire	FR		0	0	0	1
Priorslee								
	W2016/0804	Land Rear of Units 1A-1C, Gatcombe Way, Priorslee, Telford, Shropshire	GR		0	0	20	20
	W2017/0347	Priorslee East, Off Gatcombe Way/York Road/Hereford Drive/Lambeth Drive, Priorslee, Telfo	GR		0	0	210	10
Wrockwardine								
	W2016/0332	Land West of The Cedars, Rodington, Telford, Shropshire	OB		1	1	0	13
					1111	404	926	402
TOTALS				43.54	1,522	621	1,349	962

FR - Former Residential FE - Former Employment OB - Other Brownfield GR - Greenfield

Appendix 3 - Residential Sites with Plots Not Started 2017/18

Ward Name	Application No	Address	Previous Use	Hectares	Not Started
College					
	TWC/2017/0976	Former Charlton Arms Hotel, 18 Church Street, Wellington, Telford, Shropshire	OB		5
Borough					5
CHANGE OF USE DETERMINATION PRIOR APPROVAL					
Edgmond					
	TWC/2015/0908	Barn at Hay House, 12 Tibberton, Newport, Shropshire	FE	0.00	1
Borough				0	1

FR - Former Residential FE - Former Employment OB - Other Brownfield GR - Greenfield

Ward Name	Application No	Address	Previous Use	Hectares	Not Started
FULL GRANTED					
	TWC/2015/0599	Ketley Community Recycling Centre (CRC), Whitchurch Drive, Telford, Shropshire, TF1 5AB	OB		4
		16A Market Square, Wellington, Telford, Shropshire, TF1 1BU	FE		1
		Former Stores, Village Way, Oakengates, Telford, Shropshire, TF2 6TJ	OB		1
		7 Crown Street, Wellington, Telford, Shropshire, TF1 1LP	FE		4
Apley Castle					
	TWC/2016/0137	Site of 8 Greenfinch Close, Apley, Telford, Shropshire	GR		1
Brookside					
	TWC/2016/0485	The Old Rectory, Stirchley Village, Telford, Shropshire, TF3 1DY	OB		1
Church Aston and Lilleshall					
	TWC/2016/0186	Brockton Leasows Manor, Wellington Road, Lilleshall, Newport, Shropshire, TF10 9AG	OB		1
	TWC/2017/0047	Site of Yew Tree Manor, Pave Lane, Newport, Shropshire	OB		1
	TWC/2016/0121	Site of, Tessant House, Dark Lane, Church Aston, Newport, Shropshire	GR		1
	TWC/2016/0034	Amber House, Littlehales Road, Chetwynd Aston, Newport, Shropshire, TF10 9BF	GR	0.00	1
	TWC/2014/0492	Lubstree Park, Humber Lane, Preston, Telford, Shropshire, TF2 8LW	FE	0.00	5
	TWC/2013/0855	Land to the rear of Willow Tree Cottage, Station Road, Newport, Shropshire	GR		13
	TWC/2017/0856	Moor Farm, Kynnersley Drive, Lilleshall, Newport, Shropshire, TF10 9HT	OB		1
College					
	TWC/2010/0487	Charlton Arms Hotel, Church Street, Wellington, Telford, Shropshire, TF1 1DG	OB	0.00	8
	TWC/2017/0655	Site of 61,63,65,67,69,71,73 Mill Bank, Wellington, Telford, Shropshire	FR		10
Cuckoo Oak					
	TWC/2016/1192	Site of 26 - 42 (even), 19 - 35 (odds) Brook Road, 10 - 26 (even), 13 - 29 (odds) Oak Close, 1	FR		35
Dawley and Aqueduct					
	TWC/2017/0525	The Grove, 74 King Street, Dawley, Telford, Shropshire, TF4 2AQ	OB		1
	TWC/2017/0748	Site of 24 Finger Road, Dawley, Telford, Shropshire	GR		3

FR - Former Residential FE - Former Employment OB - Other Brownfield GR - Greenfield

Ward Name	Application No	Address	Previous Use	Hectares	Not Started
Dawley Magna					
	TWC/2015/0491	Site of 13 Hamilton Road, Dawley, Telford, Shropshire	FR		1
	TWC/2016/0947	2 Southall, Dawley, Telford, Shropshire, TF4 3NE	OB		2
Donnington					
	TWC/2017/0192	Site of 11 Queens Road, Donnington, Telford, Shropshire	FR		1
	TWC/2015/0259	Former Lusaka, Church Road, Donnington, Telford, Shropshire	FR	0.00	3
Edgmond					
	TWC/2016/0973	Land rear of The Cottage, 2 Cheney Hill, Edgmond Road, Newport, Shropshire	GR		1
	TWC/2017/0425	Land between 1 - 2 Newtown & 66 Shrewsbury Road, Edgmond, Newport, Shropshire	GR		1
	TWC/2014/1134	Land opposite The Priory, Newport Road, Edgmond, Newport, Shropshire	GR	0.00	1
Edgmond and Ercall Magna					
	TWC/2016/0923	Site of Long Lane Livery, Long Lane, Telford, Shropshire TF6 6HL	OB		2
	TWC/2017/0145	48 Shrewsbury Road, Edgmond, Newport, Shropshire, TF10 8HX	FR		1
	TWC/2017/0479	Site of Crescent Farm, Waters Upton, Telford, Shropshire	OB		1
Ercall					
	TWC/2015/0392	Site of 34 Golf Links Lane, Wellington, Telford, Shropshire	GR	0.00	1
	TWC/2017/0001	Land rear of 3-7 Golf Links Lane, Wellington, Telford, Shropshire	EDU		4
Ercall Magna					
	TWC/2014/0733	Land South of White House Farm, Cold Hatton, Telford, Shropshire	GR	0.00	1
	TWC/2015/0403	Site of Rock Cottages, 10 Cold Hatton, Telford, Shropshire	GR	0.00	1
Hadley and Leegomery					
	TWC/2014/1151	Telford Millennium Community (Part of Phase 4), Ketley, Telford, Shropshire	GR		12
	TWC/2018/0002	Site of Jordans Yard, Haybridge Road, Hadley, Telford, Shropshire	FR		1
	TWC/2017/0473	Land adjacent, 32 Victoria Court, Hadley, Telford, Shropshire,	FR		1
	TWC/2017/0237	Site of 2 White Row, Horton Lane, Horton, Telford, Shropshire	FR		3
	TWC/2016/0351	Land adjacent 43 Hadley Park Road, Hadley, Telford, Shropshire	GR		1

FR - Former Residential FE - Former Employment OB - Other Brownfield GR - Greenfield

Ward Name	Application No	Address	Previous Use	Hectares	Not Started
	TWC/2016/0797	Site of Haybridge Hall Flats, Haybridge Road, Hadley, Telford, Shropshire	OB		10
<i>Haygate</i>					
	TWC/2016/1074	The Birches, 57 Wrockwardine Road, Wellington, Telford, Shropshire, TF1 3DA	FR		-1
	TWC/2017/0174	Site of 5 Church Street, Wellington, Telford, Shropshire	OB		6
	TWC/2018/0009	11 Church Street, Wellington, Telford, Shropshire, TF1 1DD	OB		1
<i>Horsehay and Lightmoor</i>					
	TWC/2017/0967	Site of Culverlea, Wellington Road, Horsehay, Telford, Shropshire	FR		1
	TWC/2015/0255	Site of Adamson House, Bridge Road, Horsehay, Telford, Shropshire	FE	0.00	6
	TWC/2015/1098	Site of former All Labour in Vain, Wellington Road, Horsehay, Telford, Shropshire	OB		9
	TWC/2017/0847	6-14 Horsehay Court, Horsehay, Telford, Shropshire, TF4 3PU	FE		8
<i>Ironbridge Gorge</i>					
	TWC/2016/1038	Site of Severn Garage, The Wharfage, Ironbridge, Telford, Shropshire	FE		2
	TWC/2017/1048	Site of Lincoln Grange Nursing Home, Lincoln Hill, Ironbridge, Telford, Shropshire	OB		1
	TWC/2017/0840	The Horse and Jockey, Jockey Bank, Ironbridge, Telford, Shropshire, TF8 7PD	OB		1
	TWC/2017/0390	Site of 7 Severn Bank, Ironbridge, Telford, Shropshire	FE		1
	TWC/2016/0838	Land adjacent Old School House, School Road, Coalbrookdale, Telford, Shropshire	FR		1
	TWC/2016/0562	Site of Lincoln Grange Nursing Home, Lincoln Hill, Ironbridge, Telford, Shropshire	OB		89
	TWC/2016/0481	17 The Wharfage, Ironbridge, Telford, Shropshire, TF8 7AW	OB		1
	TWC/2015/1153	Land Adjacent Old Wynd House, Crackshall Lane, Coalbrookdale, Telford, Shropshire	GR		1
	TWC/2015/0066	Former Dale End Garage Workshop, Dale End, Ironbridge, Telford, Shropshire	FE		1
	TWC/2014/0772	Sutton Wood Farm, Sutton Bank, Coalport, Telford, Shropshire, TF11 9NJ	OB		3
	TWC/2014/0055	Crown Inn, 10 Hodge Bower, Ironbridge, Telford, Shropshire, TF8 7QG	OB		7
	TWC/2013/0961	Garage/annex adjacent to, Laburnum Cottage, Woodlands Road, Ironbridge, Telford, Shrops	FR	0.00	1
	TWC/2017/0653	Riversmead, Waterloo Street, Ironbridge, Telford, Shropshire, TF8 7AA	FR		1
<i>Ketley and Oakengates</i>					
	TWC/2015/0328	Land adjacent 40 Holyhead Road, Oakengates, Telford, Shropshire	GR	0.00	1

FR - Former Residential FE - Former Employment OB - Other Brownfield GR - Greenfield

Ward Name	Application No	Address	Previous Use	Hectares	Not Started
	TWC/2017/0005	Site of 5A Church Parade, Wombridge, Telford, Shropshire	OB		1
	TWC/2011/0769	The Homelands, Mossey Green, Ketley Bank, Telford, Shropshire, TF2 0DN	OB		8
	TWC/2013/0222	7 Oxford Street, Oakengates, Shropshire	FE	0.20	1
	TWC/2015/0719	Land between 29 & 33 Station Road, Ketley, Telford, Shropshire	GR	0.00	1
	TWC/2015/1122	Land between, 5 & 11 Leonard Street, Oakengates, Telford, Shropshire	GR	0.00	2
	TWC/2016/0739	Former 17-19 Stafford Road, Oakengates, Telford, Shropshire	FE		4
	TWC/2013/0096	Ketley Millennium Village, Holyhead Road, Ketley, Telford, Shropshire	OB	11.09	99
<i>Ketley and Overdale</i>					
	TWC/2015/0705	Land rear of 11, Wrens Nest Lane, Ketley, Telford, Shropshire	FR		2
	TWC/2016/1025	Land adjacent 36 Quarry Lane, Red Lake, Telford, Shropshire	FR		1
	TWC/2017/0438	Site of Upway Cottage, 51 The Rock, Telford, Shropshire	FR		1
<i>Lawley and Overdale</i>					
	TWC/2016/1079	Site of, 45 Clares Lane Close, The Rock, Telford, Shropshire	GR		1
	TWC/2016/0280	Site Of Orchard House, Princes End, Dawley Bank, Telford, Shropshire	GR		1
	TWC/2016/0236	Site of 1 - 30, Powis Place, Dawley Bank, Telford, Shropshire	FR		15
	TWC/2015/0857	Easy Care Products Ltd, Chapel Workshops, Park Lane, Old Park, Telford, Shropshire, TF3	OB	0.00	0
<i>Madeley</i>					
	TWC/2016/0407	Former Severn Valley Motorsport Ltd/Madeley Testing Station, Ironbridge Road, Madeley, Tel	OB		8
	TWC/2016/0702	5 Court Street, Madeley, Telford, Shropshire, TF7 5EB	OB		1
	TWC/2015/0881	Site of 11 Queen Street, Madeley, Telford, Shropshire	FR	0.00	2
	TWC/2015/0722	Site of Lee Dingle, 48 Lees Farm Drive, Madeley, Telford, Shropshire	GR	0.00	1
	TWC/2016/0438	Site of 21 Bridle Road, Madeley, Telford, Shropshire	FR		7
<i>Madeley and Sutton Hill</i>					
	TWC/2017/0640	Site of Rainbow House, 78 New Road, Madeley, Telford, Shropshire	FE		4
<i>Muxton</i>					
	TWC/2015/1042	Land adjacent 50 Wellington Road, Muxton, Telford, Shropshire	GR		2

FR - Former Residential FE - Former Employment OB - Other Brownfield GR - Greenfield

Ward Name	Application No	Address	Previous Use	Hectares	Not Started
Newport North and West					
	TWC/2017/0447	Site of Aston Grove, Moorfield Lane, Newport, Shropshire	FR		10
	TWC/2016/0816	Royal Victoria Hotel, St Marys Street/16 & 17 Water Lane, Newport, Shropshire	OB		28
	TWC/2017/0824	2 New Street, Newport, Shropshire, TF10 7AX	OB		-1
Newport South					
	TWC/2015/0510	Land adjacent & rear of 11 & rear of Gable End, 9 Granville Avenue, Newport, Shropshire	GR	0.00	1
Oakengates and Ketley Bank					
	TWC/2017/0128	Land corner of Bank Way/Mossey Green, Ketley Bank, Telford, Shropshire	GR		6
	TWC/2018/0011	The Alexandra Inn, 10 Slaney Street, Oakengates, Telford, Shropshire, TF2 6ET	OB		4
	TWC/2017/0008	Land rear of 86-88 Church Parade, Wombridge, Telford, Shropshire	FR		4
Park					
	TWC/2017/0401	Land adjacent 8 Wrockwardine Road, Wellington, Telford, Shropshire	GR		2
Priorslee					
	TWC/2016/0125	Land at junction of, Moss Road/Rookery Road, Wrockwardine Wood, Telford, Shropshire	FR		24
	TWC/2012/0243	The Hollies, Priorslee Village, Telford, Shropshire, TF2 9NW	GR		1
	TWC/2016/0162	Land North of, Keepers Crescent & Daisy Bank Drive, St Georges, Telford, Shropshire	GR		4
St Georges					
	TWC/2017/0465	Wesley House, 4 Station Hill, St Georges, Telford, TF2 9AA	OB		12
The Nedge					
	TWC/2017/0507	Site of Premier stores, Unit 1, Calcott, Stirchley, Telford, Shropshire	OB		6
	W2009/0326	Randlay Centre, Randlay Community Centre, Randlay, Telford, Shropshire.	OB	1.41	12
Wrockwardine					
	TWC/2015/0915	Site of The Mill House, Walcot, Telford, Shropshire	OB		1
	TWC/2016/0685	Land between, 20, 22 Bratton Road, Bratton, Telford, Shropshire	GR		5
	TWC/2014/0662	Brook Lodge, Arleston Lane, Arleston, Telford, Shropshire, TF1 2JY	FR	0.00	1
	TWC/2016/0551	Highbury Villa, Drury Lane, Rodington, Telford, Shropshire, SY4 4RG	OB		-1

FR - Former Residential FE - Former Employment OB - Other Brownfield GR - Greenfield

Ward Name	Application No	Address	Previous Use	Hectares	Not Started
	TWC/2014/0805	The Patch, Land opposite 4 High Point, Little Wenlock, Telford, Shropshire, TF6 5BT	GR	0.00	1
	TWC/2017/0714	Land junction of, Holyhead Road/Snedshill Way, Snedshill, Telford, Shropshire	OB		39
	TWC/2017/0575	Land North of Tansy Mead, Rodington Heath, Telford, Shropshire	GR		1
	TWC/2017/0088	New Works Farm, New Works, Telford, Shropshire, TF6 5BP	OB		2
	TWC/2014/1078	Orchard Field (opposite The Mount Guest House), Dawley Road, Arleston, Telford, Shropshir	GR	0.00	1

Wrockwardine Wood and Trench

TWC/2010/0593	The Former Methodist Chapel, Chapel Terrace, Wrock	OB	0.00	4
TWC/2017/0572	Former Old Shawburch Inn, Trench Road, Trench, Telford, Shropshire, TF2 7DX	OB		4
TWC/2016/0747	Site of 17-24 James Close, Trench, Telford, Shropshire	FR		7

Borough

12.699 622

FULL REFUSED

Appeal Allowe

Ercall Magna

W2008/0059	TERN FARM, LONGDON-ON-TERN	GR	1.01	7
------------	----------------------------	----	------	---

Borough

1.0124 7

OTHER

Cuckoo Oak

TWC/2016/0916	No-26 - 42 (even), 19 - 35 (odds) Brook Road, 10 - 26 (even), 13 - 29 (odds) Oak Close, 17 -	FR		-52
---------------	--	----	--	-----

Donnington

TWC/2016/0917	Site of 1-71 (odds), St Matthews Road, Donnington, Telford, Shropshire	FR		-36
---------------	--	----	--	-----

Newport West

TWC/2016/0370	Lower Farm, Longford Road, Newport, Shropshire, TF10 8LP	OB		1
---------------	--	----	--	---

Wrockwardine Wood and Trench

TWC/2016/0746	17-24 James Close, Trench, Telford, Shropshire, TF2 7HH	OB	0.00	-8
---------------	---	----	------	----

Borough

0 -95

FR - Former Residential FE - Former Employment OB - Other Brownfield GR - Greenfield

Ward Name	Application No	Address	Previous Use	Hectares	Not Started
OUTLINE GRANTED					
Admaston and Bratton					
	TWC/2016/0978	Land rear of 32 Bratton Road, Bratton, Telford, Shropshire	GR		14
	TWC/2017/0006	Site of 8 & 10 Shawbirch Road, Admaston, Telford, Shropshire	FR		2
Apley Castle					
	TWC/2014/0746	Maxell Europe Ltd, Hortonwood, Telford, Shropshire, TF1 6DA	FE	0.00	495
Church Aston and Lilleshall					
	TWC/2011/0827	Land To The North Of, Audley Avenue, Newport, Shropshire.	GR	0.00	215
	TWC/2018/0110	Site of 84 Limekiln Lane, Lilleshall, Newport, Shropshire	FR		1
	TWC/2017/0724	Land adjacent 82A Limekiln Lane, Lilleshall, Newport, Shropshire	FR		1
College					
	TWC/2014/1053	Site of Masonic Building, Constitution Hill, Wellington, Telford, Shropshire	OB	0.00	4
	TWC/2015/1151	Land opposite College Farm House, Mill Lane, Wellington, Telford, Shropshire	GR	0.00	5
Cuckoo Oak					
	TWC/2015/0506	Land adjacent, 39 Shawfield Close, Sutton Hill, Telford, Shropshire	GR	0.00	1
Dawley Magna					
	TWC/2014/0671	Land adjacent to Cheshire Cheese, Doseley Road, Doseley, Telford, Shropshire	GR	0.00	13
	TWC/2016/0954	Land East of Southall Play Area, Southall Road, Aqueduct, Telford, Shropshire	FE		3
Donnington					
	TWC/2017/0029	Land opposite 93 & 95 Ash Lea Drive, Donnington, Telford, Shropshire	OB		4
Edgmond					
	TWC/2015/0950	Site of Honey House, Tibberton, Newport, Shropshire	GR		2
	TWC/2016/0709	Site of 72 Back Lane, Tibberton, Newport, Shropshire	GR		1
Edgmond and Ercall Magna					
	TWC/2017/0499	Site of 64 Plantation Road, Tibberton, Newport, Shropshire	FR		2
	TWC/2017/0836	Plot 2, Plantation Road, Tibberton, Newport, Shropshire, TF10 8PD	GR		1
FR - Former Residential FE - Former Employment OB - Other Brownfield GR - Greenfield					

Ward Name	Application No	Address	Previous Use	Hectares	Not Started
	TWC/2017/0467	Site of 18 Crudgington, Telford, Shropshire	FR		0
	TWC/2017/0364	Site of 1 - 2 Newtown, Edgmond, Newport, Shropshire	FR		1
	TWC/2016/0446	Land north of 61 Plantation Road, Tibberton, Newport, Shropshire	OB		22
	TWC/2016/0365	Site of Sutherland Farm, Back Lane, Tibberton, Newport, Shropshire	OB		8
	TWC/2017/0965	Land north of Rose Green & Swyn-Y-Coed, Tibberton, Newport, Shropshire	GR		1
Ercall					
	TWC/2016/0285	Site of 17 Ercall Gardens, Wellington, Telford, Shropshire	GR		1
Ercall Magna					
	TWC/2015/0157	Former Dairy Crest Ltd, Crudgington, Telford, Shropshire	FE	0.00	111
	TWC/2015/0220	Site of Roden Nurseries, Roden Lane, Roden, Telford, Shropshire	FE	0.00	9
	TWC/2015/1111	Land adjacent 8 Walton Avenue & adjacent Ridgway, High Ercall, Telford, Shropshire	FE		45
Hadley and Leegomery					
	TWC/2015/1017	Land rear of 60 Castle Street, Hadley, Telford, Shropshire	GR	0.00	1
	TWC/2016/0221	Site of 25 Hadley Park Road, Hadley, Telford, Shropshire	FR		1
	TWC/2016/0466	Site of 5 The Grove, Hadley, Telford, Shropshire	GR		2
	TWC/2017/0826	Land between Horton Farm, 35 & 36 Horton Lane, Horton, Telford, Shropshire	OB		4
	TWC/2016/1124	Site of Caravan And Camping Centre, Stadium Way, Hadley, Telford, Shropshire,	OB		14
	TWC/2016/1163	Land adjacent 15 Manse Road, Hadley, Telford, Shropshire	GR		2
	TWC/2017/0302	Land between Uppatree, 33 & Horton Farm, 35, Horton Lane, Horton, Telford, Shropshire	OB		3
	TWC/2017/0261	Site of Greyfriars, Waterloo Road, Ketley, Telford, Shropshire	FR		5
	TWC/2017/0744	Land between Hayes Meadow and Uppatree, 33 Horton Lane, Horton, Telford, Shropshire	GR		5
Haygate					
	TWC/2017/0316	Site of Peter Morris Cars, Wellington, Telford, Shropshire	OB		14
Horsehay and Lightmoor					
	TWC/2014/0770	Land at Hartfield House, Pool Hill Road, Dawley, Telford, Shropshire	GR	0.00	1
	TWC/2015/0488	Site of Oakleigh, Lawley Village, Telford, Shropshire	FR		8

FR - Former Residential FE - Former Employment OB - Other Brownfield GR - Greenfield

Ward Name	Application No	Address	Previous Use	Hectares	Not Started
	TWC/2016/0107	Former Concrete Works, Lightmoor Road, Lightmoor, Telford, Shropshire	FE		0
	W2002/0392	Land at Lightmoor, Telford	OB	79.20	320
	TWC/2016/0533	Site of Sundown, Old Office Road, Dawley, Telford, Shropshire	OB		8
<i>Ironbridge Gorge</i>					
	TWC/2011/1102	Land off, Beech Road, Madeley, Telford, Shropshire	OB	0.00	92
<i>Ketley and Oakengates</i>					
	TWC/2016/0836	Site of 41 Riddings Close, Ketley, Telford, Shropshire	FR		1
	TWC/2015/1154	Site of The White Lion Inn, Holyhead Road, Ketley, Telford, Shropshire	GR	0.00	2
	TWC/2015/0629	Land Adjacent, 11 Withington Close, Oakengates, Telford, Shropshire	GR	0.00	1
	TWC/2015/0369	Land off Garfield Road, Red Lake, Ketley Bank, Telford, Shropshire	GR	0.00	45
<i>Ketley and Overdale</i>					
	TWC/2017/0574	Land adjacent 34 Milners Lane, Dawley Bank, Telford, Shropshire	GR		5
	TWC/2017/0658	Land adjacent, 30 Hartley Close, Overdale, Telford, Shropshire	GR		2
	TWC/2017/0153	Site of The Wrens Nest, Wrens Nest Lane, Ketley, Telford, Shropshire	OB		9
<i>Lawley and Overdale</i>					
	W2004/0980	LAND AT, LAWLEY, The Rock	GR	157.50	1610
	TWC/2016/0147	Land North of Grove Road, Overdale, Telford, Shropshire	GR		80
	TWC/2016/0677	Site of Wrekin Pneumatics (Telford) Ltd/Wrekin Garden Machinery/Kleaning Equipment West	FE		5
<i>Madeley</i>					
	TWC/2015/0928	Land East of 21A St Michaels Close, Madeley, Telford, Shropshire,	GR		1
<i>Madeley and Sutton Hill</i>					
	TWC/2017/0259	Site of Alver & land adjacent/rear of Clews Wood Court, Station Road, Madeley, Telford, Shro	FR		17
<i>Malinslee and Dawley Bank</i>					
	TWC/2016/0801	Site of The Queens Arms, Bank Road, Dawley Bank, Telford, Shropshire	OB		10
<i>Muxton</i>					
	TWC/2015/0763	Land South West of Lodge Cottage, 1 Lodge Road, Donnington Wood, Telford, Shropshire	GR	0.00	1

FR - Former Residential FE - Former Employment OB - Other Brownfield GR - Greenfield

Ward Name	Application No	Address	Previous Use	Hectares	Not Started
	TWC/2017/0691	Site of 25 Copperfield Drive, Muxton, Telford, Shropshire	FR		1
Newport North					
	TWC/2016/1136	Site of 3 Forton Road, Newport, Shropshire	GR		1
Newport North and West					
	TWC/2017/0179	Land south of 28 Beechfields Way, Newport, Shropshire	GR		19
	TWC/2017/0233	Site of Plough Farm Nursery, Plough Lane, Newport, Shropshire	GR		55
Newport South and East					
	TWC/2015/0057	Land South of Springfield Industrial Estate, Station Road, Newport, Shropshire	OB		120
Park					
	TWC/2016/1084	Site of The Acorns, Donnerville Gardens, Admaston, Telford, Shropshire	FR		7
Priorslee					
	TWC/2017/0987	Site of Greenhigh, Lodgewood Lane, St Georges, Telford, Shropshire	FR		1
	TWC/2012/0530	Off, Priorslee East, Gatcombe Way/York Road/Hereford Drive, Priorslee, Telford, Shropshire,	GR	0.00	155
	TWC/2014/0980	Land between, Castle Farm Way and A5, Priorslee, Telford, Shropshire	FE		1100
	TWC/2017/0352	Land adjacent Rosehurst, Bridgnorth Road, Madeley, Telford, Shropshire	GR		8
St Georges					
	TWC/2017/0367	Units 7 - 9, Gower Street Trading Estate, Gower Street, St Georges, Telford, Shropshire, TF2	FE		0
	TWC/2016/0654	Land rear of, 66 and 68 Stafford Road, Oakengates, Telford, Shropshire,	GR		1
	TWC/2015/1008	Former Garage, New Street, St Georges, Telford, Shropshire	OB		6
	TWC/2015/1006	Land to rear of Grove House, Grove Street, St Georges, Telford, Shropshire	GR	0.00	1
	TWC/2017/1056	Site of 32 Stafford Street, St Georges, Telford, Shropshire	FE		0
St Georges and Priorslee					
	TWC/2015/0728	Land corner of Redhill Way/A5, Redhill, Telford, Shropshire	OB		450
The Nedge					
	TWC/2013/0809	The Former Swan Centre, Grange Avenue, Stirchley, Telford, Shropshire, TF3 1UP	EDU		21

FR - Former Residential FE - Former Employment OB - Other Brownfield GR - Greenfield

Ward Name	Application No	Address	Previous Use	Hectares	Not Started
Wrockwardine					
	TWC/2014/0113	Former British Sugar site, Allscott, Telford, Shropshire	FE		470
Wrockwardine Wood and Trench					
	TWC/2016/0052	Land adjacent The Bridge Inn, Wombridge Road, Trench, Telford, Shropshire	GR	0.00	2
	TWC/2013/0861	Sutherland Business & Enterprise College, Gibbons Road, Trench, Telford, Shropshire, TF2	EDU		123
	TWC/2015/0572	Site of Simply The Best Valeting, Plough Road, Wrockwardine Wood, Telford, Shropshire	OB		5
	TWC/2016/0799	Site of 11 & 11A Field Road, Trench, Telford, Shropshire	FR		1
Borough				236.7	5778
OUTLINE REFUSED		Appeal Allowe			
Church Aston and Lilleshall					
	TWC/2014/1060	Land adjacent The Queens Head Car Park, Horton, Telford, Shropshire	OB		0
Edgmond and Ercall Magna					
	TWC/2014/1080	Land south and west of Tibberton Motor Repairs, Mill Lane, Tibberton, Newport, Shropshire	GR		22
Borough					22
RESERVE MATTERS GRANTED					
Edgmond and Ercall Magna					
	TWC/2016/1127	Land corner of Back Lane/Plantation Road, Tibberton, Newport, Shropshire	OB		17
Haygate					
	W2008/0108	Orleton Park, Orleton Lane, Wellington, Telford, Shropshire.	OB	6.84	165
Borough				6.843	182

FR - Former Residential FE - Former Employment OB - Other Brownfield GR - Greenfield

Ward Name	Application No	Address	Previous Use	Hectares	Not Started
RESERVED MATTERS GRANTED					
<i>Admaston and Bratton</i>					
	TWC/2016/1078	Land adjacent 19 Aldermead Close, Admaston, Telford, Shropshire	OB		8
<i>Apley Castle</i>					
	TWC/2015/0843	Land off Peregrine Way, Leegomery, Telford, Shropshire	GR		100
<i>Arleston</i>					
	TWC/2015/0836	Land between Arleston Lane & Dawley Road, Arleston, Telford, Shropshire	GR		145
	TWC/2017/0092	Site of The Bungalow, Arleston Village, Arleston, Telford, Shropshire	FR		3
<i>Church Aston and Lilleshall</i>					
	TWC/2016/0682	Site of Village Farm, Preston Upon The Weald Moors, Telford, Shropshire	GR		1
	TWC/2016/0260	Land adjacent The Knoll, Church Aston, Newport, Shropshire	GR		17
	TWC/2018/0026	Site of Tessant House, Dark Lane, Church Aston, Newport, Shropshire	FR		1
<i>Dawley and Aqueduct</i>					
	TWC/2017/0998	Site of 33 Portley Road, Dawley, Telford, Shropshire	FR		1
<i>Dawley Magna</i>					
	TWC/2014/0602	Plot E, Pool Hill/Doseley Road, Dawley, Telford, Shropshire	GR	0.00	50
<i>Edgmond</i>					
	TWC/2015/0582	Land adjacent 18 Cherrington, Cherrington, Shropshire	GR	0.00	1
	TWC/2015/0988	Site of 2 Sambrook, Newport, Shropshire	GR	0.00	1
<i>Edgmond and Ercall Magna</i>					
	TWC/2017/0711	Land adjacent The Queens Head Car Park, Horton, Telford, Shropshire	OB		0
<i>Ercall</i>					
	TWC/2016/1197	Land to the rear of 3-7 Golf Links Lane, Wellington, Telford, Shropshire	EDU		60
<i>Ercall Magna</i>					
	TWC/2015/0455	Land adjacent to 28 Mill Lane, Kynnersley, Telford, Shropshire	GR	0.00	3

FR - Former Residential FE - Former Employment OB - Other Brownfield GR - Greenfield

Ward Name	Application No	Address	Previous Use	Hectares	Not Started
Haygate					
	TWC/2017/0643	Land to the North of Haygate Road, Wellington, Telford, Shropshire	OB		289
Horsehay and Lightmoor					
	TWC/2016/0660	Lawley Phase 7, Lawley, Telford, Shropshire	OB		139
	TWC/2016/0293	Former Doseley Works (Phase 2), Doseley, Telford, Shropshire	FE		268
	TWC/2016/0180	Land adjacent Acorn Cottage, 36 Lawley Gate, Lawley, Telford, Shropshire	GR		1
	TWC/2014/1072	Land north of Lightmoor Way, Lightmoor Village, Telford, Shropshire	GR	0.00	141
	TWC/2014/0237	Land at Doseley Works, Doseley, Telford, Shropshire, TF4 3BX	GR	0.00	72
	TWC/2018/0071	Site of 12 St Lukes Road, Doseley, Telford, Shropshire	FR		3
Lawley and Overdale					
	TWC/2015/0233	Lawley Phase 8, Lawley, Telford, Shropshire	GR	0.00	202
Malinslee and Dawley Bank					
	TWC/2017/0204	Land adjacent Belvedere Court, Hinkshay Road, Dawley, Telford, Shropshire	FE		80
Muxton					
	TWC/2017/0194	Land rear of 41, 43, 45, 47 Wellington Road, Muxton, Telford, Shropshire,	GR		19
Newport South					
	TWC/2016/0529	Land adjacent 1 Station Road, Newport, Shropshire	GR		1
Newport South and East					
	TWC/2017/0766	Site of 1 The Oaklands, Springfields, Newport, Shropshire	FR		1
Newport West					
	TWC/2013/0928	Phase 1, Land off Wellington Road, Newport, Shropshire	GR	3.47	2
Oakengates and Ketley Bank					
	TWC/2017/0931	Land rear of Mil-May, Lincoln Road, Wrockwardine Wood, Telford Shropshire	FR		1
Priorslee					
	TWC/2016/0804	Land Rear of Units 1A-1C, Gatcombe Way, Priorslee, Telford, Shropshire	GR		20
	TWC/2017/0347	Priorslee East, Off Gatcombe Way/York Road/Hereford Drive/Lambeth Drive, Priorslee, Telfo	GR		210

FR - Former Residential FE - Former Employment OB - Other Brownfield GR - Greenfield

Ward Name	Application No	Address	Previous Use	Hectares	Not Started
Wrockwardine					
	TWC/2016/0738	Site of Holly Tree House, Allscott, Telford, Shropshire	GR		1
Wrockwardine Wood and Trench					
	TWC/2016/1099	Site of former Wrockwardine Wood Arts College, New Road, Wrockwardine Wood, Telford, S	EDU		
Borough				3.47	1841
TOTALS				260.7	8363

FR - Former Residential FE - Former Employment OB - Other Brownfield GR - Greenfield

Appendix 4a - Completed Employment Floorspace 2017/18

Application No	Address	Use Class	Previous Use	Sq M	Hectares
W2016/0471	Plot 6, Telford 54, Nedge Hill, Telford, Shropshire	B1(a)	GR	1686	9.44
W2015/0275	27 Market Street, Oakengates, Telford, Shropshire, TF2 6EN	B1(a)	PDL	190	0.06
W2015/1022	13 Market Square, Wellington, Telford, Shropshire, TF1 1BU	B1(a)	PDL	-1600	0.16
W2016/0966	Wellington Town Council/Wellington Civic Offices and Leisure Centre, Tan Bank, Wellington, Telford, Shropshire, TF1	B1(a)	PDL	-120	0.40
W2017/0460	Former Northwood Paper Sales Ltd, Grant House, Stafford Park 12, Stafford Park, Telford, Shropshire, TF3 3BJ	B1(a)	PDL	-614	0.44
W2017/0542	Dale Brothers UK Ltd, Hortonwood 67, Hortonwood, Telford, Shropshire, TF1 7GU	B1(a)	PDL	44	0.73
W2017/0609	Capital House, Hadley Park East, Hadley, Telford, Shropshire, TF1 6QJ	B1(a)	PDL	626	0.12
W2017/0642	37 Park Street, Wellington, Telford, Shropshire, TF1 3AE	B1(a)	PDL	-160	0.04
W2017/0649	Reynolds House, Ironmasters Way, Telford Town Centre, Telford, Shropshire, TF3 4NT	B1(a)	PDL	-3442	0.42
W2017/0745	Unit 6, The Court, 24 Church Street, Wellington, Telford, Shropshire, TF1 1DG	B1(a)	PDL	-36	0.00
W2017/0874	Parkland House & The Car Auction Ltd/Edgmond Foods (Unit 6 - 10) Audley Avenue Industrial Estate, Audley Avenue,	B1(a)	PDL	-2937	
W2017/1045	30-38 (First Floor) New Street, Wellington, Telford, Shropshire, TF1 1NE	B1(a)	PDL	370	0.04
W2018/0001	Acoustafom Ltd, Unit D2, Halesfield 10, Halesfield, Telford, Shropshire, TF7 4QP	B1(a)	PDL	218	0.34
Use Class Net				-5775	
Use Class Gross				3134	
W2016/0029	Harper Adams University College, Edgmond, Newport, Shropshire, TF10 8NB	B1(b)	PDL	2503	5.95
Use Class Net				2503	
Use Class Gross				2503	
W2014/0701	Greenways, Ashley Road, St Georges, Telford, Shropshire, TF2 9LF	B1(c)	GR	103	4.94
W2015/0024	The Piggeries, Grove Lane, Rodington, Telford, Shropshire	B1(c)	GR	-200	0.12
W2015/0342	Unit B4, Stafford Park 15, Stafford Park, Telford, Shropshire, TF3 3BB	B1(c)	PDL	66	0.04
W2017/0019	Unit 3, Halesfield 16, Halesfield, Telford, Shropshire, TF7 4QS	B1(c)	PDL	-63	0.93
W2017/0249	Unit F5, Stafford Park 15, Stafford Park, Telford, Shropshire, TF3 3BB	B1(c)	PDL	60	0.05
W2017/0291	Former Halesfield Day Services, Halesfield 22, Halesfield, Telford, Shropshire, TF7 4EW	B1(c)	PDL	-200	0.02
W2017/0618	Halesfield Motor Spares, Unit E, Halesfield 14, Halesfield, Telford, Shropshire, TF7 4QR	B1(c)	PDL	64	0.37
W2017/0850	Unit 9b, Stafford Park 12, Stafford Park, Telford, Shropshire, TF3 3BJ	B1(c)	PDL	140	0.09

Application No	Address	Use Class	Previous Use	Sq M	Hectares
W2017/0874	Parkland House & The Car Auction Ltd/Edgmond Foods (Unit 6 - 10) Audley Avenue Industrial Estate, Audley Avenue,	B1(c)	PDL	-413	
Use Class Net				-444	
Use Class Gross				432	
W2015/1064	Land east of Queensway HLC, Queensway, Hortonwood, Telford, Shropshire	B2	GR	6400	21.42
W2016/0471	Plot 6, Telford 54, Nedge Hill, Telford, Shropshire	B2	GR	22477	9.44
W2016/1198	Plot 2 & 3 Telford 54 Business Park, Nedge Hill, Telford, Shropshire	B2	GR	8051	3.89
W2017/0474	Abbey Farm, Abbey Road, Lilleshall, Newport, Shropshire, TF10 9HW	B2	GR	2014	0.30
W2015/0149	Unit 29, St Georges Road Industrial Estate, St Georges Road, Donnington, Telford, Shropshire, TF2 7QZ	B2	PDL	159	0.02
W2016/1037	Garage, New Street, St Georges, Telford, Shropshire, TF2 9AW	B2	PDL	-800	0.12
W2017/0011	Land east of Queensway HLC, Queensway, Hortonwood, Telford, Shropshire	B2	PDL	1840	0.81
W2017/0260	Coopers Sausage Rolls, Poynton Road, Roden, Telford, Shropshire, TF6 6EN	B2	PDL	128	0.02
W2017/0848	Q A (Ironbridge) Ltd, Factory 1, Halesfield 22, Halesfield, Telford, Shropshire, TF7 4QX	B2	PDL	63	0.23
W2017/1032	Innovation House, Hortonwood 30, Hortonwood, Telford, TF1 7AB	B2	PDL	46	1.15
Use Class Net				40378	
Use Class Gross				41178	
W2015/0471	Lynn Mill Farm, Lynn, Newport, Shropshire, TF10 9BB	B8	GR	560	9.50
W2015/1064	Land east of Queensway HLC, Queensway, Hortonwood, Telford, Shropshire	B8	GR	3156	21.42
W2017/0817	Coppice House, Dog In Lane, Little Wenlock, Telford, Shropshire, TF6 5BW	B8	GR	2000	0.20
W2017/0109	Shell Ketley, Holyhead Road, Ketley, Telford, Shropshire, TF1 5DY	B8	PDL	5	0.00
W2017/0119	Lorry Park, Hortonwood 8, Hortonwood, Telford, Shropshire, TF1 7GR	B8	PDL	2500	2.50
W2017/0236	Site of Castlebridge Plant & Compound 1C, Ketley Business Park, Ketley, Telford, Shropshire	B8	PDL	328	1.08
W2017/0236	Site of Castlebridge Plant & Compound 1C, Ketley Business Park, Ketley, Telford, Shropshire	B8	PDL	1010	1.08
W2017/0236	Site of Castlebridge Plant & Compound 1C, Ketley Business Park, Ketley, Telford, Shropshire	B8	PDL	1587	1.08
W2017/0272	Unit E, Doseley Industrial Estate, Frame Lane, Doseley, Telford, Shropshire, TF4 3BZ	B8	PDL	286	0.03
W2017/0460	Former Northwood Paper Sales Ltd, Grant House, Stafford Park 12, Stafford Park, Telford, Shropshire, TF3 3BJ	B8	PDL	-1741	0.44
W2017/0538	The Meat Counter, Station Yard, Commercial Way, Oakengates, Telford, Shropshire, TF2 6SG	B8	PDL	114	0.04
W2018/0001	Acoustafam Ltd, Unit D2, Halesfield 10, Halesfield, Telford, Shropshire, TF7 4QP	B8	PDL	400	0.34
W2018/0025	Freyssinet Ltd, Waterloo Road, Ketley, Telford, Shropshire, TF1 5BA	B8	PDL	300	0.72

Application No	Address	Use Class	Previous Use	Sq M	Hectares
Use Class Net				10505	
Use Class Gross				12246	
Borough Net Totals				47167	
Borough Gross Totals				59493	

Appendix 4b - Other Non-residential Completed Floorspace 2017/18

Application No	Address	Use Class	Previous Use	Sq M	Hectares
W2014/1049	40 High Street, Dawley, Telford, Shropshire, TF4 2EX	A1	PDL	-66	0.01
W2015/0045	Florace, Station Fields, Oakengates, Telford, Shropshire, TF2 6DH	A1	PDL	100	0.08
W2015/0149	Unit 29, St Georges Road Industrial Estate, St Georges Road, Donnington, Telford, Shropshire, TF2 7QZ	A1	PDL	-159	0.02
W2016/0387	Former Madeley Court School, Land off Parkway, Madeley, Telford, Shropshire	A1	PDL	190	1.60
W2016/0387	Former Madeley Court School, Land off Parkway, Madeley, Telford, Shropshire	A1	PDL	697	1.60
W2016/0694	Aldi Foodstore Ltd, Grooms Alley, Wellington, Telford, Shropshire, TF1 1BN	A1	PDL	1653	0.81
W2017/0019	Unit 3, Halesfield 16, Halesfield, Telford, Shropshire, TF7 4QS	A1	PDL	63	0.93
W2017/0138	Plot A, Halesfield 25, Halesfield, Telford, Shropshire	A1	PDL	575	1.05
W2017/0236	Site of Castlebridge Plant & Compound 1C, Ketley Business Park, Ketley, Telford, Shropshire	A1	PDL	328	1.08
W2017/0303	Unit 5, Telford Forge Retail Park, Colliers Way, Old Park, Telford, Shropshire, TF3 4AG	A1	PDL	-226	0.20
W2017/0388	Unit 5, Telford Forge Retail Park, Colliers Way, Old Park, Telford, Shropshire, TF3 4AG	A1	PDL	672	0.20
W2017/0512	Unit 10, Birchfield Way, Lawley, Telford, Shropshire, TF3 5BZ	A1	PDL	-245	0.02
W2017/0512	Unit 10, Birchfield Way, Lawley, Telford, Shropshire, TF3 5BZ	A1	PDL	245	0.02
W2017/0528	Unit 1, 73 High Street, Newport, Shropshire, TF10 7AU	A1	PDL	-59	0.04
W2017/0558	57 Market Street, Oakengates, Telford, Shropshire, TF2 6EA	A1	PDL	-36	0.02
W2017/0929	57 Park Street, Madeley, Telford, Shropshire, TF7 5LD	A1	PDL	-56	0.01
W2017/0983	Mere Park Garden Centre, Stafford Road, Newport, Shropshire, TF10 9BY	A1	PDL	-1000	0.10
W2018/0081	9 Market Square, Wellington, Telford, Shropshire, TF1 1BP	A1	PDL	-317	0.03
Use Class Net				2360	
Use Class Gross				4523	
W2017/0415	Ironstone Visitor Centre, Lawley Drive, Newdale, Telford, Shropshire, TF3 5HL	A2	PDL	355	1.27
Use Class Net				355	
Use Class Gross				355	
W2014/0824	Sutherland Arms, Tibberton, Newport, Shropshire, TF10 8NN	A3	PDL	23	0.11
W2015/0275	27 Market Street, Oakengates, Telford, Shropshire, TF2 6EN	A3	PDL	228	0.06
W2015/0275	27 Market Street, Oakengates, Telford, Shropshire, TF2 6EN	A3	PDL	60	0.06

Application No	Address	Use Class	Previous Use	Sq M	Hectares
W2015/1030	Methodist Church, Stirchley Lane, Dawley, Telford, Shropshire, TF4 3SZ	A3	PDL	20	0.06
W2015/1030	Methodist Church, Stirchley Lane, Dawley, Telford, Shropshire, TF4 3SZ	A3	PDL	150	0.06
W2016/0387	Former Madeley Court School, Land off Parkway, Madeley, Telford, Shropshire	A3	PDL	93	1.60
W2016/0646	Land fronting Southwater One, Park Avenue, Southwater, Telford Town Centre, Telford, Shropshire	A3	PDL	323	0.30
W2016/0676	Museum Of Iron, Ironbridge Gorge Museum Trust, Coach Road, Coalbrookdale, Telford, Shropshire, TF8 7DQ	A3	PDL	-91	0.04
W2016/0842	Lord Hill Inn, High Street, Dawley, Telford, Shropshire, TF4 2EX	A3	PDL	133	0.04
W2016/0842	Lord Hill Inn, High Street, Dawley, Telford, Shropshire, TF4 2EX	A3	PDL	173	0.04
W2017/0291	Former Halesfield Day Services, Halesfield 22, Halesfield, Telford, Shropshire, TF7 4EW	A3	PDL	200	0.02
W2017/0303	Unit 5, Telford Forge Retail Park, Colliers Way, Old Park, Telford, Shropshire, TF3 4AG	A3	PDL	226	0.20
W2017/0460	Former Northwood Paper Sales Ltd, Grant House, Stafford Park 12, Stafford Park, Telford, Shropshire, TF3 3BJ	A3	PDL	307	0.44
W2017/0460	Former Northwood Paper Sales Ltd, Grant House, Stafford Park 12, Stafford Park, Telford, Shropshire, TF3 3BJ	A3	PDL	62	0.44
W2017/0964	Oakgate Nursery Cafe, Ellerdine Heath, Telford, Shropshire, TF6 6RL	A3	PDL	-75	6.00
Use Class Net				1832	
Use Class Gross				1998	
W2014/0055	Crown Inn, 10 Hodge Bower, Ironbridge, Telford, Shropshire, TF8 7QG	A4	PDL	-2298	0.23
W2014/0800	All Labour in Vain, Wellington Road, Horsehay, Telford, Shropshire, TF4 2PU	A4	PDL	0	
W2015/0275	27 Market Street, Oakengates, Telford, Shropshire, TF2 6EN	A4	PDL	223	0.06
W2016/0842	Lord Hill Inn, High Street, Dawley, Telford, Shropshire, TF4 2EX	A4	PDL	-133	0.04
Use Class Net				-2208	
Use Class Gross				223	
W2014/1049	40 High Street, Dawley, Telford, Shropshire, TF4 2EX	A5	PDL	66	0.01
Use Class Net				66	
Use Class Gross				66	
W2014/0237	Land at Doseley Works, Doseley, Telford, Shropshire, TF4 3BX	b1c	PDL	-200	7.70
Use Class Net				-200	
Use Class Gross				0	
W2016/0646	Land fronting Southwater One, Park Avenue, Southwater, Telford Town Centre, Telford, Shropshire	C1	PDL	2442	0.30

Application No	Address	Use Class	Previous Use	Sq M	Hectares
Use Class Net				2442	
Use Class Gross				2442	
W2014/0316	Harper Adams University, Edgmond, Newport, Shropshire, TF10 8NB	C2	GR	1257	0.97
W2017/0835	The Old Vicarage, Priorslee Road, St Georges, Telford, Shropshire, TF2 9EA	C2	PDL	344	0.16
Use Class Net				1601	
Use Class Gross				1601	
W2017/0654	Church Street Day Nursery, 49 Church Street, Wellington, Telford, Shropshire, TF1 1DA	D1		126	
W2015/0208	Sutherland Co Operative Academy, Gibbons Road, Trench, Telford, Shropshire, TF2 7JR	D1	PDL	-73000	7.30
W2015/0324	Newport Girls High School, Wellington Road, Newport, Shropshire, TF10 7HL	D1	PDL	1056	1.89
W2015/0324	Newport Girls High School, Wellington Road, Newport, Shropshire, TF10 7HL	D1	PDL	-232	1.89
W2015/1030	Methodist Church, Stirchley Lane, Dawley, Telford, Shropshire, TF4 3SZ	D1	PDL	-150	0.06
W2016/0676	Museum Of Iron, Ironbridge Gorge Museum Trust, Coach Road, Coalbrookdale, Telford, Shropshire, TF8 7DQ	D1	PDL	91	0.04
W2016/0744	Harper Adams University, Edgmond, Newport, Shropshire, TF10 8NB	D1	PDL	94	0.20
W2016/0971	Strickland House, The Lawns, Wellington, Telford, Shropshire, TF1 3BX	D1	PDL	165	
W2016/1085	Apley Village Day Nursery, Grainger Drive, Apley, Telford, Shropshire, TF1 6UL	D1	PDL	223	0.39
W2017/0010	Trench Tots, Gibbons Road, Trench, Telford, Shropshire, TF2 7JR	D1	PDL	-193	0.17
W2017/0010	Trench Tots, Gibbons Road, Trench, Telford, Shropshire, TF2 7JR	D1	PDL	400	0.17
W2017/0039	Harper Adams University, Edgmond, Newport, Shropshire TF10 8NB	D1	PDL	408	0.18
W2017/0286	Millbrook Primary School, Grainger Drive, Leegomery,, Telford, Shropshire, TF1 6UJ	D1	PDL	160	0.15
W2017/0338	27 Upper Wood, The Rock, Telford, Shropshire, TF3 5DR	D1	PDL	45	0.00
W2017/0506	Grange Park Primary School, Calcott, Stirchley, Telford, Shropshire, TF3 1YQ	D1	PDL	-2188	1.31
W2017/0609	Capital House, Hadley Park East, Hadley, Telford, Shropshire, TF1 6QJ	D1	PDL	-626	0.12
W2017/0630	Church Aston Village Hall, Wallshead Way, Church Aston, Newport, Shropshire, TF10 9JG	D1	PDL	9	0.91
W2017/0745	Unit 6, The Court, 24 Church Street, Wellington, Telford, Shropshire, TF1 1DG	D1	PDL	36	0.00
W2018/0081	9 Market Square, Wellington, Telford, Shropshire, TF1 1BP	D1	PDL	317	0.03
Use Class Net				-73259	
Use Class Gross				3130	

Application No	Address	Use Class	Previous Use	Sq M	Hectares
W2015/0471	Lynn Mill Farm, Lynn, Newport, Shropshire, TF10 9BB	D2	GR	440	9.50
W2016/0832	Cheswell Grange, Cheswell Drive, Cheswell, Newport, Shropshire, TF10 9AE	D2	GR	80	0.97
W2017/0200	Land opposite Aqualate Golf Centre, Stafford Road, Newport, Shropshire	D2	GR	43200	
W2016/0966	Wellington Town Council/Wellington Civic Offices and Leisure Centre, Tan Bank, Wellington, Telford, Shropshire, TF1	D2	PDL	120	0.40
W2017/0245	Aqualate Golf Centre, Stafford Road, Newport, Shropshire, TF10 9BY	D2	PDL	39	33.00
W2017/0381	Childrens And Family Locality Services, Old Hall Cluster Base, Limekiln Lane, Wellington, Telford, Shropshire, TF1 2N	D2	PDL	45	0.19
W2017/0460	Former Northwood Paper Sales Ltd, Grant House, Stafford Park 12, Stafford Park, Telford, Shropshire, TF3 3BJ	D2	PDL	2048	0.44
W2017/1045	30-38 (First Floor) New Street, Wellington, Telford, Shropshire, TF1 1NE	D2	PDL	-370	0.04

Use Class Net

45603

Use Class Gross

45973

W2016/0225	44 & 45 Park Street, Madeley, Telford, Shropshire, TF7 5LD	SG		64	
W2014/0859	Sunnymeade Kennels And Cattery, B4394, Allscott, Telford, Shropshire, TF6 5EQ	SG	GR	2556	0.26
W2015/0471	Lynn Mill Farm, Lynn, Newport, Shropshire, TF10 9BB	SG	GR	-560	9.50
W2016/1154	Little Hales Manor Farm, Littlehales Road, Chetwynd Aston, Newport, Shropshire, TF10 9AN	SG	GR	2378	0.70
W2017/0458	Bridge Farm, Longford, Newport, Shropshire, TF10 8LT	SG	GR	778	0.23
W2017/0458	Bridge Farm, Longford, Newport, Shropshire, TF10 8LT	SG	GR	-629	0.23
W2017/0458	Bridge Farm, Longford, Newport, Shropshire, TF10 8LT	SG	GR	159	0.23
W2017/0474	Abbey Farm, Abbey Road, Lilleshall, Newport, Shropshire, TF10 9HW	SG	GR	-2014	0.30
W2017/0503	Sugden Farm, Sugden Lane, Sugden, Telford, Shropshire, TF6 6NA	SG	GR	2612	1.19
W2017/0817	Coppice House, Dog In Lane, Little Wenlock, Telford, Shropshire, TF6 5BW	SG	GR	-2000	0.20
W2013/0871	Unit 108C, Halesfield 13, Halesfield, Telford, Shropshire, TF7 4QR	SG	PDL	669	1.45
W2015/0275	27 Market Street, Oakengates, Telford, Shropshire, TF2 6EN	SG	PDL	-581	0.06
W2016/0225	44 & 45 Park Street, Madeley, Telford, Shropshire, TF7 5LD	SG	PDL	64	0.01
W2016/0387	Former Madeley Court School, Land off Parkway, Madeley, Telford, Shropshire	SG	PDL	168	1.60
W2016/1037	Garage, New Street, St Georges, Telford, Shropshire, TF2 9AW	SG	PDL	800	0.12
W2017/0119	Lorry Park, Hortonwood 8, Hortonwood, Telford, Shropshire, TF1 7GR	SG	PDL	-2500	2.50
W2017/0169	32 Stafford Street, St Georges, Telford, Shropshire, TF2 9JQ	SG	PDL	-38	0.04
W2017/0272	Unit E, Doseley Industrial Estate, Frame Lane, Doseley, Telford, Shropshire, TF4 3BZ	SG	PDL	-286	

Application No	Address	Use Class	Previous Use	Sq M	Hectares
W2017/0415	Ironstone Visitor Centre, Lawley Drive, Newdale, Telford, Shropshire, TF3 5HL	SG	PDL	-355	1.27
W2017/0489	55 Lytham Green, Muxton, Telford, Shropshire, TF2 8SQ	SG	PDL	15	0.01
W2017/0618	Halesfield Motor Spares, Unit E, Halesfield 14, Halesfield, Telford, Shropshire, TF7 4QR	SG	PDL	-64	0.37
W2017/0751	Furrows of Telford, Haybridge Road, Wellington, Telford, Shropshire, TF1 2FF	SG	PDL	69	0.05
W2017/0929	57 Park Street, Madeley, Telford, Shropshire, TF7 5LD	SG	PDL	56	0.01
W2017/0983	Mere Park Garden Centre, Stafford Road, Newport, Shropshire, TF10 9BY	SG	PDL	1000	0.10
Use Class Net				2361	
Use Class Gross				11388	
Borough Net Totals				-19048	
Borough Gross Totals				71697	

Appendix 4c - Town Centre Uses Completed Floorspace 2017/18

Application No	Address	Use Class	Previous Use	Sq M	Hectares
W2015/0045	Florace, Station Fields, Oakengates, Telford, Shropshire, TF2 6DH	A1	PDL	100	0.08
W2015/0149	Unit 29, St Georges Road Industrial Estate, St Georges Road, Donnington, Telford, Shropshire, TF2 7QZ	A1	PDL	-159	0.02
W2017/0019	Unit 3, Halesfield 16, Halesfield, Telford, Shropshire, TF7 4QS	A1	PDL	63	0.93
W2017/0138	Plot A, Halesfield 25, Halesfield, Telford, Shropshire	A1	PDL	575	1.05
W2017/0236	Site of Castlebridge Plant & Compound 1C, Ketley Business Park, Ketley, Telford, Shropshire	A1	PDL	328	1.08
W2017/0303	Unit 5, Telford Forge Retail Park, Colliers Way, Old Park, Telford, Shropshire, TF3 4AG	A1	PDL	-226	0.20
W2017/0388	Unit 5, Telford Forge Retail Park, Colliers Way, Old Park, Telford, Shropshire, TF3 4AG	A1	PDL	672	0.20
W2017/0512	Unit 10, Birchfield Way, Lawley, Telford, Shropshire, TF3 5BZ	A1	PDL	245	0.02
W2017/0512	Unit 10, Birchfield Way, Lawley, Telford, Shropshire, TF3 5BZ	A1	PDL	-245	0.02
W2017/0528	Unit 1, 73 High Street, Newport, Shropshire, TF10 7AU	A1	PDL	-59	0.04
W2017/0558	57 Market Street, Oakengates, Telford, Shropshire, TF2 6EA	A1	PDL	-36	0.02
W2017/0929	57 Park Street, Madeley, Telford, Shropshire, TF7 5LD	A1	PDL	-56	0.01
W2017/0983	Mere Park Garden Centre, Stafford Road, Newport, Shropshire, TF10 9BY	A1	PDL	-1000	0.10
W2018/0081	9 Market Square, Wellington, Telford, Shropshire, TF1 1BP	A1	PDL	-317	0.03
W2017/0415	Ironstone Visitor Centre, Lawley Drive, Newdale, Telford, Shropshire, TF3 5HL	A2	PDL	355	1.27
W2016/0471	Plot 6, Telford 54, Nedge Hill, Telford, Shropshire	B1(a)	GR	1686	9.44
W2015/0275	27 Market Street, Oakengates, Telford, Shropshire, TF2 6EN	B1(a)	PDL	190	0.06
W2017/0460	Former Northwood Paper Sales Ltd, Grant House, Stafford Park 12, Stafford Park, Telford, Shropshire, TF3 3BJ	B1(a)	PDL	-614	0.44
W2017/0542	Dale Brothers UK Ltd, Hortonwood 67, Hortonwood, Telford, Shropshire, TF1 7GU	B1(a)	PDL	44	0.73
W2017/0609	Capital House, Hadley Park East, Hadley, Telford, Shropshire, TF1 6QJ	B1(a)	PDL	626	0.12
W2017/0642	37 Park Street, Wellington, Telford, Shropshire, TF1 3AE	B1(a)	PDL	-160	0.04
W2017/0649	Reynolds House, Ironmasters Way, Telford Town Centre, Telford, Shropshire, TF3 4NT	B1(a)	PDL	-3442	0.42
W2017/0745	Unit 6, The Court, 24 Church Street, Wellington, Telford, Shropshire, TF1 1DG	B1(a)	PDL	-36	0.00
W2017/0874	Parkland House & The Car Auction Ltd/Edgmond Foods (Unit 6 - 10) Audley Avenue Industrial Estate, Audley Avenue,	B1(a)	PDL	-2937	
W2017/1045	30-38 (First Floor) New Street, Wellington, Telford, Shropshire, TF1 1NE	B1(a)	PDL	370	0.04

Application No	Address	Use Class	Previous Use	Sq M	Hectares
W2018/0001	Acoustafoam Ltd, Unit D2, Halesfield 10, Halesfield, Telford, Shropshire, TF7 4QP	B1(a)	PDL	218	0.34
W2015/0471	Lynn Mill Farm, Lynn, Newport, Shropshire, TF10 9BB	D2	GR	440	9.50
W2016/0832	Cheswell Grange, Cheswell Drive, Cheswell, Newport, Shropshire, TF10 9AE	D2	GR	80	0.97
W2017/0200	Land opposite Aqualate Golf Centre, Stafford Road, Newport, Shropshire	D2	GR	43200	
W2017/0245	Aqualate Golf Centre, Stafford Road, Newport, Shropshire, TF10 9BY	D2	PDL	39	33.00
W2017/0381	Childrens And Family Locality Services, Old Hall Cluster Base, Limekiln Lane, Wellington, Telford, Shropshire, TF1 2N	D2	PDL	45	0.19
W2017/0460	Former Northwood Paper Sales Ltd, Grant House, Stafford Park 12, Stafford Park, Telford, Shropshire, TF3 3BJ	D2	PDL	2048	0.44
W2017/1045	30-38 (First Floor) New Street, Wellington, Telford, Shropshire, TF1 1NE	D2	PDL	-370	0.04
Area Net				41668	
Area Gross				51324	
Dawley					
W2014/1049	40 High Street, Dawley, Telford, Shropshire, TF4 2EX	A1	PDL	-66	0.01
Area Net				-66	
Area Gross				0	
Madeley					
W2016/0387	Former Madeley Court School, Land off Parkway, Madeley, Telford, Shropshire	A1	PDL	190	1.60
W2016/0387	Former Madeley Court School, Land off Parkway, Madeley, Telford, Shropshire	A1	PDL	697	1.60
Area Net				887	
Area Gross				887	
Wellington					
W2016/0694	Aldi Foodstore Ltd, Grooms Alley, Wellington, Telford, Shropshire, TF1 1BN	A1	PDL	1653	0.81
W2015/1022	13 Market Square, Wellington, Telford, Shropshire, TF1 1BU	B1(a)	PDL	-1600	0.16
W2016/0966	Wellington Town Council/Wellington Civic Offices and Leisure Centre, Tan Bank, Wellington, Telford, Shropshire, TF1	B1(a)	PDL	-120	0.40
W2016/0966	Wellington Town Council/Wellington Civic Offices and Leisure Centre, Tan Bank, Wellington, Telford, Shropshire, TF1	D2	PDL	120	0.40
Area Net				53	
Area Gross				1773	

Application No	Address	Use Class	Previous Use	Sq M	Hectares
Borough Net Totals				42542	
Borough Gross Totals				53984	

Appendix 5 - Non-residential Under Construction 2017/18

Year	Application No	Address	Change	Use Class	Hectares	Sq M
2018	W2016/0952	Site of Roden Hall Care Home, Roden Lane, Roden, Telford, Shropshire	NEW	C2	1.47	3547
2018	W2016/1073	Land North of Aldi Foodstore Ltd, Audley Avenue, Newport, Shropshire	NEW	A1	2.50	4182
2018	W2016/1073	Land North of Aldi Foodstore Ltd, Audley Avenue, Newport, Shropshire	NEW	A3	2.50	117
2018	W2016/1130	Lower House Farm, Waters Upton, Telford, Shropshire, TF6 6PB	CU	SG	0.26	-48.5
2018	W2016/1199	Northern Quarter, Telford Shopping Centre, Telford, Shropshire	REP	A1	0.68	5070
2018	W2017/0044	Units 3 and 4, Mere Park Garden Centre, Stafford Road, Newport, Shropshire, TF10 9BY	NEW	A1	0.16	820
2018	W2017/0126	Site of Watling Street Farm, Grange Lane, Red Hill, Telford, Shropshire	CU	SG	0.91	-9100
2018	W2017/0244	St Pauls Church, Aqueduct Road, Aqueduct, Telford, Shropshire,	CU	D1	0.02	-83
2018	W2017/0305	Land adjacent Lawley Bank Court, Bryce Way, Lawley, Telford, Shropshire	NEW	C2	0.47	3126
2018	W2017/0341	Land rear of Edgmond Foods, Units 6-10 Audley Avenue Industrial Estate, Audley Avenue	NEW	SG	414.00	280
2018	W2017/0354	Ironbridge Gorge Museum Trust, Coach Road, Coalbrookdale, Telford, Shropshire, TF8 7D	CU	A3	0.05	410
2018	W2017/0354	Ironbridge Gorge Museum Trust, Coach Road, Coalbrookdale, Telford, Shropshire, TF8 7D	CU	D1	0.05	-410
2018	W2017/0437	The Second Club, 148 Trench Road, Trench, Telford, Shropshire, TF2 7DU	CU	D2	0.02	-140
2018	W2017/0446	Madeley Court Football Pitches, Court Road, Madeley, Telford, Shropshire	NEW	D2	2.80	243
2018	W2017/0454	Site of The Vineyard, North Road, Wellington, Telford, Shropshire	CU	D1	0.46	-1400
2018	W2017/0459	Woodcoat, Walton Avenue, High Ercall, Telford, Shropshire, TF6 6AJ	CU	D1	0.13	-125
2018	W2017/0500	Communications House, Hadley Park East, Hadley, Telford, Shropshire, TF1 6QJ	EXT	B1(a)	0.48	220
2018	W2017/0580	Muller, Donnington Wood Business Park, Granville Road, Donnington Wood, Telford, Shrop	EXT	B2	8.48	452
2018	W2017/0582	Telford Bus Station, Telford Town Centre, Telford, Shropshire	EXT	A1	3.53	4973
2018	W2017/0677	Weald Moor Farm, Kynnersley, Telford, Shropshire	NEW	SG	0.06	279
2018	W2017/0690	Land East of Queensway HLC, Queensway, Hortonwood, Telford, Shropshire	NEW	B1(a)	2.63	452.5
2018	W2017/0690	Land East of Queensway HLC, Queensway, Hortonwood, Telford, Shropshire	NEW	B2	2.63	6730.5
2018	W2017/0690	Land East of Queensway HLC, Queensway, Hortonwood, Telford, Shropshire	NEW	B8	2.63	8318.5
2018	W2017/0749	Land junction of Forge Roundabout, Rampart Way, Telford Town Centre, Telford, Shropshir	NEW	A3	0.69	366

CU - Change of Use EXT - Extension DEM - Demolition REP - Replacement Building MOB - Mobile Unit

Year	Application No	Address	Change	Use Class	Hectares	Sq M
2018	W2017/0749	Land junction of Forge Roundabout, Rampart Way, Telford Town Centre, Telford, Shropshir	NEW	A3	0.69	366
2018	W2017/0749	Land junction of Forge Roundabout, Rampart Way, Telford Town Centre, Telford, Shropshir	NEW	A3	0.69	447
2018	W2017/0749	Land junction of Forge Roundabout, Rampart Way, Telford Town Centre, Telford, Shropshir	NEW	A5	0.69	175
2018	W2017/0749	Land junction of Forge Roundabout, Rampart Way, Telford Town Centre, Telford, Shropshir	NEW	A5	0.69	175
2018	W2017/0762	The Talbot Inn, 26 High Street, Dawley, Telford, Shropshire, TF4 2EX	CU	A3	0.01	-120
2018	W2017/0820	Barnes Farm, Rowton, Telford, Shropshire TF6 6QX	NEW	SG	0.08	836
2018	W2017/0905	Land East of Queensway HLC, Queensway, Hortonwood, Telford, Shropshire	NEW	B2	0.97	1409
2018	W2017/0905	Land East of Queensway HLC, Queensway, Hortonwood, Telford, Shropshire	NEW	B2	0.97	1504
2018	W2017/0964	Oakgate Nursery Cafe, Ellerdine Heath, Telford, Shropshire, TF6 6RL	REP	A3	6.00	176
2018	W2017/0988	Shrewsbury And Telford Hospital NHS Trust, Princess Royal Hospital, Grainger Drive, Aple	EXT	C2	14.18	165
2018	W2017/1051	40 Castle Street, Hadley, Telford, Shropshire, TF1 5RA	CU	A5	0.10	103
2018	W2018/0070	Unit 1 & Unit 2, Rampart Way, Telford Town Centre, Telford, Shropshire, TF3 4AS	MEZ	A1	0.97	263
2018	W2018/0070	Unit 1 & Unit 2, Rampart Way, Telford Town Centre, Telford, Shropshire, TF3 4AS	CU	A1	0.97	-723
2018	W2018/0070	Unit 1 & Unit 2, Rampart Way, Telford Town Centre, Telford, Shropshire, TF3 4AS	CU	D2	0.97	986
2018	W2018/0070	Unit 1 & Unit 2, Rampart Way, Telford Town Centre, Telford, Shropshire, TF3 4AS	MEZ	D2	0.97	226
2018	W2018/0094	Pickstock Ashby Ltd, Unit E, Hortonwood 45, Hortonwood, Telford, Shropshire, TF1 7FA	NEW	B2	4.62	338

Ward Totals

481.17 34606

Church Aston and Lilleshall

2018	W2014/0492	Lubstree Park, Humber Lane, Telford, Shropshire, TF2 8LW	CU	B1(c)	1.44	-3560
2018	W2017/0090	Lynncroft, 24 Lynn, Newport, Shropshire, TF10 9BB	CU	C1	0.01	128

Ward Totals

1.45 -3432

College

2018	W2007/0667	Telford Islamic Centre, 88 to 90 King Street Wellington	CU	D1	0.23	2440
2018	W2007/0667	Telford Islamic Centre, 88 to 90 King Street Wellington	CU	D2	0.23	-2440
2018	W2016/0130	Service Station, King Street, Wellington, Telford, Shropshire, TF1 3EY	EXT	B2	0.09	226
2018	W2016/0130	Service Station, King Street, Wellington, Telford, Shropshire, TF1 3EY	CU	B2	0.09	28

CU - Change of Use EXT - Extension DEM - Demolition REP - Replacement Building MOB - Mobile Unit

Year	Application No	Address	Change	Use Class	Hectares	Sq M
2018	W2016/0130	Service Station, King Street, Wellington, Telford, Shropshire, TF1 3EY	CU	SG	0.09	-28
Ward Totals					0.73	226
Cuckoo Oak						
2018	W2016/0765	Ingimex, Plot 11, Halesfield 19, Halesfield, Telford, Shropshire, TF7 4QT	EXT	B2	2.55	990
Ward Totals					2.55	990
Dawley Magna						
2018	W2016/0133	Light House Building & Pool House, Webb Crescent, Dawley, Telford, Shropshire, TF4 3DU	EXT	D2	0.75	68
Ward Totals					0.75	68
Donnington						
2018	W2016/0064	Land adjacent Copperlea, 2 Wrekin Drive, Donnington, Telford, Shropshire	NEW	D1	0.14	0
Ward Totals					0.14	0
Edgmond						
2018	W2015/1079	Agricultural buildings adjacent Sambrook Hall Farm, Sambrook, Newport, Shropshire	CU	B1(c)	0.12	-370
Ward Totals					0.12	-370
Ercall						
2018	W2015/0781	Orleton Hall, The Beaters Room, Holyhead Road, Wellington, Telford, Shropshire	CU	C1	0.02	95
Ward Totals					0.02	95
Ercall Magna						
2018	W2012/0323	Riverside Stars Lane Cold Hatton Heath	EXT	B1(a)	0.17	82
2018	W2012/0323	Riverside Stars Lane Cold Hatton Heath	CU	B1(a)	0.17	69
2018	W2012/0323	Riverside Stars Lane Cold Hatton Heath	CU	B1(c)	0.17	-69
2018	W2014/0714	Unit 3, The Quarry, Waters Upton, Telford, Shropshire, TF6 6NP	EXT	B2	0.37	148
Ward Totals					0.88	230
Hadley and Leegomery						
2018	W2013/0011	40 Castle Street, Hadley, TF1 5RA Hadley	EXT	A5	0.10	30

CU - Change of Use EXT - Extension DEM - Demolition REP - Replacement Building MOB - Mobile Unit

Year	Application No	Address	Change	Use Class	Hectares	Sq M
2018	W2016/0015	Pickstock Ashby Ltd, Hortonwood 45, Hortonwood, Telford, Shropshire, TF1 7FA	EXT	B2	4.62	1052
2018	W2016/0598	Pickstock Ashby Ltd, Unit E, Hortonwood 45, Hortonwood, Telford, Shropshire, TF1 7FA	EXT	B2	4.62	1052
2018	W2017/0051	Land West of Household Recycling Centre, Hortonwood 60, Hortonwood, Telford, Shropshir	NEW	SG	0.90	300
Ward Totals					10.24	2434
Haygate						
2018	W2014/1098	23 Walker Street, Wellington, Telford, Shropshire, TF1 1BD	CU	B1(a)	0.14	222
2018	W2014/1098	23 Walker Street, Wellington, Telford, Shropshire, TF1 1BD	CU	D1	0.14	-727
2018	W2014/1138	5 Church Street, Wellington, Telford, Shropshire, TF1 1DD	CU	A1	0.07	515
2018	W2015/0662	11 - 13 Crown Street, Wellington, Telford, Shropshire, TF1 1LP	CU	B1(a)	0.01	-72
Ward Totals					0.36	-62
Ironbridge Gorge						
2018	W2014/0140	Beeches Pool, Beech Road, Ironbridge, Telford, Shropshire, TF8 7PA	NEW	Other	0.37	60
2018	W2014/0212	The Grove Inn, Wellington Road, Coalbrookdale, Telford, Shropshire, TF8 7DX	CU	A4	0.14	-500
2018	W2014/0844	Central Cafe, 32A High Street, Ironbridge, Telford, TF8 7AD	EXT	A3	0.03	42
Ward Totals					0.54	-398
Ketley and Oakengates						
2018	W2005/0906	WELLINGS LTD WASTE RECYCLING CENTRE, RO Ketley	NEW	Other	2.64	500
2018	W2016/0395	Land between 29 & 33 Station Road, Ketley, Telford, Shropshire	CU	A1	0.02	-89.6
2018	W2016/0395	Land between 29 & 33 Station Road, Ketley, Telford, Shropshire	NEW	B1(c)	0.02	89.6
Ward Totals					2.68	500
Newport South						
2018	W2017/0095	1 & 2 The Maltings, Springfields, Newport, Shropshire, TF10 7EZ	CU	B8	0.02	-150
Ward Totals					0.02	-150
Priorslee						
2018	W2015/1013	Business And Technology Centre, University Of Wolverhampton, Shifnal Road, Priorslee, T	EXT	D1	0.50	560

CU - Change of Use EXT - Extension DEM - Demolition REP - Replacement Building MOB - Mobile Unit

Year	Application No	Address	Change	Use Class	Hectares	Sq M
Ward Totals					0.50	560
The Nedge						
2018	W2015/0864	Plot 5, Telford 54, Nedge Hill, Telford, Shropshire	NEW	B2	1.62	52333
Ward Totals					1.62	52333
Wrockwardine						
2018	W2012/0672	Upper Coalmoor Farm Moreton Coppice Coalmoor	EXT	B1(b)	0.03	379
2018	W2015/0505	Lower Huntington Farm, Little Wenlock, Telford, Shropshire, TF6 5AP	NEW	B8	0.69	664
2018	W2015/0505	Lower Huntington Farm, Little Wenlock, Telford, Shropshire, TF6 5AP	CU	SG	0.69	-1144
2018	W2015/0637	Upper Coalmoor Farm, Coalmoor Road, Horsehay, Telford, Shropshire, TF4 2PX	EXT	B2	2.86	247
Ward Totals					4.27	146
Wrockwardine Wood and Trench						
2018	W2015/0124	l2r Packaging Solutions Ltd, Innovation House, Hortonwood 30, Hortonwood, Telford, Shro	EXT	B8	1.15	1413
Ward Totals					1.15	1413
Borough Totals					509.18	89189

CU - Change of Use EXT - Extension DEM - Demolition REP - Replacement Building MOB - Mobile Unit

Appendix 6a - Employment Land New Build Not Started 2017/18

Year	Application No	Address	Use Class	Hectares	Sq M
2018	W2016/0583	Land rear of Wrap Film Systems Ltd, Hortonwood 45, Hortonwood, Telford, Shropshire	B2	3.41	2100
2018	W2016/0583	Land rear of Wrap Film Systems Ltd, Hortonwood 45, Hortonwood, Telford, Shropshire	B2	3.41	1690
2018	W2016/0583	Land rear of Wrap Film Systems Ltd, Hortonwood 45, Hortonwood, Telford, Shropshire	B2	3.41	1960
2018	W2016/0583	Land rear of Wrap Film Systems Ltd, Hortonwood 45, Hortonwood, Telford, Shropshire	B2	3.41	1390
2018	W2016/0583	Land rear of Wrap Film Systems Ltd, Hortonwood 45, Hortonwood, Telford, Shropshire	B2	3.41	2630
2018	W2016/0583	Land rear of Wrap Film Systems Ltd, Hortonwood 45, Hortonwood, Telford, Shropshire	B2	3.41	1080
2018	W2016/0583	Land rear of Wrap Film Systems Ltd, Hortonwood 45, Hortonwood, Telford, Shropshire	B2	3.41	750
2018	W2016/1198	Plot 2 & 3 Telford 54 Business Park, Nedge Hill, Telford, Shropshire	B2	3.89	2631
2018	W2016/1198	Plot 2 & 3 Telford 54 Business Park, Nedge Hill, Telford, Shropshire	B2	3.89	1982
2018	W2017/0138	Plot A, Halesfield 25, Halesfield, Telford, Shropshire	B2	1.05	1500
2018	W2017/0276	Grange Fencing Ltd, Halesfield 21, Halesfield, Telford, Shropshire, TF7 4NX	B2	0.97	864
2018	W2017/0321	Land corner of Halesfield 18 & 20, Off Halesfield 20, Halesfield, Telford, Shropshire	B1(a)	1.28	1300
2018	W2017/0321	Land corner of Halesfield 18 & 20, Off Halesfield 20, Halesfield, Telford, Shropshire	B2	1.28	1300
2018	W2017/0321	Land corner of Halesfield 18 & 20, Off Halesfield 20, Halesfield, Telford, Shropshire	B8	1.28	2600
2018	W2017/0427	Land adjacent Sigma & Staubli House, Hadley Park East, Hadley, Telford, Shropshire,	B8	1.60	2114
2018	W2017/0887	Site of Reynolds House, Ironmasters Way, Telford Town Centre, Telford, Shropshire	B1(a)	0.42	2821
Ward Totals				39.54	28712
Dawley Magna					
2018	W2015/0095	The Mill, Heath Hill Industrial Estate, Dawley, Telford, Shropshire, TF4 2JX	B8	0.62	162
Ward Totals				0.62	162
Hadley and Leegomery					
2018	W2015/0387	Trench Lock 24/7, Trench Lock Petrol Station, Trench Lock, Telford, Shropshire, TF1 6SZ	B8	0.58	283

Year	Application No	Address	Use Class	Hectares	Sq M
Ward Totals				0.58	283
Ketley and Oakengates					
2018	W2016/0243	Trio Furnishings, Unit 3 Holyhead Road, Ketley, Telford, Shropshire, TF1 5DS	B8	0.03	258
Ward Totals				0.03	258
The Nedge					
2018	W2015/0666	Plot 6, Telford 54, Nedge Hill, Telford, Shropshire	B8	15.50	35837
2018	W2015/0891	Plot 1C, Telford 54, Nedge Hill, Telford, Shropshire	B1(a)	0.27	23
2018	W2015/0891	Plot 1C, Telford 54, Nedge Hill, Telford, Shropshire	B8	0.27	350
2018	W2016/0784	Single Source Ltd, Stafford Park 6, Stafford Park, Telford, Shropshire, TF3 3AT	B1(c)	0.77	31
Ward Totals				16.81	36241
Wrockwardine					
2018	W2014/0113	Former British Sugar site, Allscott, Telford, Shropshire	B1(a)	36.60	200
Ward Totals				36.60	200
Borough Totals				94.18	65856

Appendix 6b - Other Employment Land Not Started 2017/18

Year	Application No	Address	Change	Use Class	Hectares	Sq M
2018	W2016/0107	Former Concrete Works, Lightmoor Road, Lightmoor, Telford, Shropshire	CU	B2	1.87	-10870
2018	W2016/0293	Former Doseley Works (Phase 3), Doseley, Telford, Shropshire	DEM	B1(c)	17.80	-826
2018	W2016/1038	Site of Severn Garage, The Wharfage, Ironbridge, Telford, Shropshire	DEM	B1(c)	0.05	-104
2018	W2017/0009	Athena House, Wellington Road, Donnington, Telford, Shropshire, TF2 8AJ	CU	B1(a)	0.03	79
2018	W2017/0217	Besblock Ltd, Halesfield 21, Halesfield, Telford, Shropshire, TF7 4NF	EXT	B2	0.16	262.8
2018	W2017/0220	Pickstock Ashby Ltd, Unit E, Hortonwood 45, Hortonwood, Telford, Shropshire, TF1 7FA	EXT	B2	4.62	178
2018	W2017/0367	Units 7 - 9, Gower Street Trading Estate, Gower Street, St Georges, Telford, Shropshire, T	DEM	B1(c)	0.28	-600
2018	W2017/0390	Site of 7 Severn Bank, Ironbridge, Telford, Shropshire	CU	B1(a)	0.00	-32
2018	W2017/0530	Exotic Zoo, Unit 9, Donnington Wood Workshops, Bradley Road, Donnington, Telford, Shro	CU	B8	0.02	133
2018	W2017/0534	Bulls Head Garage, Plough Road, Wrockwardine Wood, Telford, Shropshire, TF2 7AW	EXT	B1(c)	0.07	38.4
2018	W2017/0640	Site of Rainbow House, 78 New Road, Madeley, Telford, Shropshire	DEM	B1(a)	0.12	-335
2018	W2017/0703	Harris House, Hortonwood 50, Hortonwood, Telford, Shropshire, TF1 7AA	EXT	B1(a)	0.70	208
2018	W2017/0802	Squatters Cottage, Lightmoor, Telford, Shropshire	CU	B1(a)	0.11	38
2018	W2017/0824	2 New Street, Newport, Shropshire, TF10 7AX	CU	B1(a)	0.00	0
2018	W2017/0847	6-14 Horsehay Court, Horsehay, Telford, Shropshire, TF4 3PU	CU	B1(c)	0.32	-997
2018	W2017/0854	Unit D1, Tweedale, Madeley, Telford, Shropshire, TF7 4JR	CU	B2	0.05	-477.9
2018	W2017/0864	Bridgnorth House, Bridgnorth Road, Madeley, Telford, Shropshire, TF7 4JB	CU	B1(a)	0.10	-96
2018	W2017/0864	Bridgnorth House, Bridgnorth Road, Madeley, Telford, Shropshire, TF7 4JB	CU	B2	0.10	96
2018	W2017/1056	Site of 32 Stafford Street, St Georges, Telford, Shropshire	DEM	B2	0.02	-110
2018	W2018/0135	P R House, Hortonwood 30, Hortonwood, Telford, Shropshire, TF1 7ET	CU	B1(a)	0.03	-266
Ward Totals					26.45	-13680.7
Apley Castle						
2018	W2014/0746	Maxell Europe Ltd, Hortonwood, Telford, Shropshire, TF1 6DA	DEM	B2	24.57	-5574

CU - Change of Use EXT - Extension DEM - Demolition REP - Replacement Building MOB - Mobile Unit

Year	Application No	Address	Change	Use Class	Hectares	Sq M
Ward Totals					24.57	-5574
College						
2018	W2016/0497	16A Market Square, Wellington, Telford, Shropshire, TF1 1BU	CU	B1(a)	0.01	-183
Ward Totals					0.01	-183
Donnington						
2018	W2016/0705	Unit 4, Donnington Wood Workshops, Bradley Road, Donnington, Telford, Shropshire, TF2	CU	B8	0.01	-89
Ward Totals					0.01	-89
Edgmond						
2018	W2014/0977	Barn adjacent The Birch Moors, Adeney, Newport, Shropshire	CU	B1(c)	0.27	-84
Ward Totals					0.27	-84
Ercall Magna						
2018	W2016/0763	New Farm, Roden Lane, Roden, Telford, Shropshire, TF6 6BS	CU	B1(c)	0.04	-361
2018	W2016/1171	Site Of Meeson Hall, Meeson, Telford, Shropshire	CU	B1(c)	0.20	-1124
Ward Totals					0.24	-1485
Hadley and Leegomery						
2018	W2016/0797	Site of Haybridge Hall Flats, Haybridge Road, Hadley, Telford, Shropshire	CU	B1(a)	0.20	-32
Ward Totals					0.20	-32
Horsehay and Lightmoor						
2018	W2016/0533	Site of Sundown, Old Office Road, Dawley, Telford, Shropshire	DEM	B8	0.17	-40
Ward Totals					0.17	-40
Ironbridge Gorge						
2018	W2014/0649	Woodside House Barns, Woodside, Coalbrookdale, Telford, Shropshire, TF8 7ED	CU	B1(c)	400.00	-360
2018	W2014/0649	Woodside House Barns, Woodside, Coalbrookdale, Telford, Shropshire, TF8 7ED	DEM	B1(c)	400.00	-7
2018	W2015/0066	Former Dale End Garage Workshop, Dale End, Ironbridge, Telford, Shropshire	CU	B2	0.03	-124.8
Ward Totals					800.03	-491.8

CU - Change of Use EXT - Extension DEM - Demolition REP - Replacement Building MOB - Mobile Unit

Year	Application No	Address	Change	Use Class	Hectares	Sq M
Lawley and Overdale						
2018	W2015/0446	Unit B5, Dawley Bank Workshops, Cavan Drive, Dawley Bank, Telford, Shropshire, TF4 2B	MOB	B1(a)	0.00	51
2018	W2015/0795	Unit A6, Dawley Bank Workshops, Cavan Drive, Dawley Bank, Telford, Shropshire, TF4 2B	MOB	B1(a)	0.01	51
2018	W2015/0857	Easy Care Products Ltd, Chapel Workshops, Park Lane, Old Park, Telford, Shropshire, TF3	CU	B1(c)	0.04	-180
2018	W2016/0677	Site of Wrekin Pneumatics (Telford) Ltd/Wrekin Garden Machinery/Kleaning Equipment We	DEM	B2	0.09	-900
Ward Totals					0.13	-978
Madeley						
2018	W2014/0162	Unit 8, Madeley Industrial Estate, Station Road, Madeley, Telford, Shropshire, TF7 5EF	CU	B8	0.02	-179.95
2018	W2014/0357	Majestic Distribution Bitec, Tweedale North, Madeley, Telford, Shropshire, TF7 4JT	EXT	B1(a)	0.10	25
2018	W2014/0357	Majestic Distribution Bitec, Tweedale North, Madeley, Telford, Shropshire, TF7 4JT	EXT	B8	0.10	5
Ward Totals					0.21	-149.95
The Nedge						
2018	W2013/1020	Defence Support Group (DSG), Sapphire House, Stafford Park 6, Stafford Park, Telford, Sh	CU	B1(a)	1.39	-9000
2018	W2014/0698	Entanet International Ltd, Stafford Park 6, Stafford Park, Telford, Shropshire, TF3 3AT	DEM	B1(c)	1.96	-1566
2018	W2014/0698	Entanet International Ltd, Stafford Park 6, Stafford Park, Telford, Shropshire, TF3 3AT	REP	B1(c)	1.96	1566
Ward Totals					5.31	-9000
Wrockwardine						
2018	W2014/0113	Former British Sugar site, Allscott, Telford, Shropshire	CU	B2	36.60	-20600
2018	W2014/1115	Maxwell Amenity Ltd, Allscott Park, Telford, Shropshire, TF6 5DY	EXT	B2	4.50	625
Ward Totals					41.10	-19975
Borough Totals					898.69	-51762.45

CU - Change of Use EXT - Extension DEM - Demolition REP - Replacement Building MOB - Mobile Unit

Appendix 6c - Other Non-residential Land Not Started 2017/18

Year	Application No	Address	Change	Use Class	Hectares	Sq M
2018	W2011/0827	Land To The North Of, Audley Avenue, Newport, Shropshire.	DEM	D2	8.80	-112
2018	W2013/0809	The Former Swan Centre, Grange Avenue, Stirchley, Telford, Shropshire, TF3 1UP	CU	D1	0.97	-9700
2018	W2015/0728	Land corner of Redhill Way/A5, Redhill, Telford, Shropshire	NEW	A1	31.25	600
2018	W2015/0728	Land corner of Redhill Way/A5, Redhill, Telford, Shropshire	NEW	A5	31.25	800
2018	W2016/0365	Site of Sutherland Farm, Back Lane, Tibberton, Newport, Shropshire	CU	SG	0.40	-1020
2018	W2016/0801	Site of The Queens Arms, Bank Road, Dawley Bank, Telford, Shropshire	DEM	A4	0.45	-200
2018	W2016/0816	Royal Victoria Hotel, St Marys Street/16 & 17 Water Lane, Newport, Shropshire	CU	C1	0.33	-762
2018	W2016/0887	Land adjacent The Shires, Shifnal Road, Priorslee, Telford, Shropshire	NEW	C2	0.57	5568
2018	W2016/0923	Site of Long Lane Livery, Long Lane, Telford, Shropshire TF6 6HL	CU	SG	0.30	-1500
2018	W2017/0009	Athena House, Wellington Road, Donnington, Telford, Shropshire, TF2 8AJ	CU	A1	0.03	-28.2
2018	W2017/0009	Athena House, Wellington Road, Donnington, Telford, Shropshire, TF2 8AJ	CU	D2	0.03	107.2
2018	W2017/0044	Units 3 and 4, Mere Park Garden Centre, Stafford Road, Newport, Shropshire, TF10 9BY	EXT	A1	0.16	273
2018	W2017/0047	Site of Yew Tree Manor, Pave Lane, Newport, Shropshire	CU	SG	1.95	-120
2018	W2017/0088	New Works Farm, New Works, Telford, Shropshire, TF6 5BP	DEM	SG	0.20	774
2018	W2017/0088	New Works Farm, New Works, Telford, Shropshire, TF6 5BP	CU	SG	0.20	109
2018	W2017/0153	Site of The Wrens Nest, Wrens Nest Lane, Ketley, Telford, Shropshire	DEM	A4	0.33	-3500
2018	W2017/0182	Hand Car Wash, Former Petrol Station, Finger Road, Dawley, Telford, Shropshire	EXT	SG	2.10	86.85
2018	W2017/0214	South Lynn Farm, Lynn, Newport, Shropshire, TF10 9BB	NEW	SG	0.06	600
2018	W2017/0278	Duke of York, Trench Road, Trench, Telford, Shropshire, TF2 7DP	DEM	A5	0.12	-76.39
2018	W2017/0278	Duke of York, Trench Road, Trench, Telford, Shropshire, TF2 7DP	EXT	C1	0.12	537
2018	W2017/0287	Severn Hospice Ltd, Apley Castle, Apley, Telford, Shropshire, TF1 6RH	EXT	C2	1.76	389
2018	W2017/0316	Site of Peter Morris Cars, Wellington, Telford, Shropshire	DEM	SG	0.16	-307
2018	W2017/0387	Land adjacent Maiden's Of Telford, Deer Park Court, Donnington Wood, Telford, Shropshir	CU	SG	1.30	13026
2018	W2017/0427	Land adjacent Sigma & Staubli House, Hadley Park East, Hadley, Telford, Shropshire,	NEW	A1	1.60	507.16

CU - Change of Use EXT - Extension DEM - Demolition REP - Replacement Building MOB - Mobile Unit

Year	Application No	Address	Change	Use Class	Hectares	Sq M
2018	W2017/0427	Land adjacent Sigma & Staubli House, Hadley Park East, Hadley, Telford, Shropshire,	NEW	A3	1.60	204.6
2018	W2017/0465	Wesley House, 4 Station Hill, St Georges, Telford, TF2 9AA	CU	SG	0.13	-600
2018	W2017/0507	Site of Premier stores, Unit 1, Calcott, Stirchley, Telford, Shropshire	DEM	A1	0.09	-18
2018	W2017/0525	The Grove, 74 King Street, Dawley, Telford, Shropshire, TF4 2AQ	CU	C2	0.22	-150
2018	W2017/0530	Exotic Zoo, Unit 9, Donnington Wood Workshops, Bradley Road, Donnington, Telford, Shro	CU	D1	0.02	-133
2018	W2017/0572	Former Old Shawbirch Inn, Trench Road, Trench, Telford, Shropshire, TF2 7DX	DEM	A4	0.05	-345
2018	W2017/0584	32 Woodside Road, Ketley, Telford, Shropshire, TF1 5EZ	CU	A1	0.06	-64
2018	W2017/0584	32 Woodside Road, Ketley, Telford, Shropshire, TF1 5EZ	CU	A5	0.06	64
2018	W2017/0598	20 West Street, St Georges, Telford, Shropshire, TF2 9HX	EXT	A1	0.32	40
2018	W2017/0616	Shawbirch Service Station, Shawbirch Road, Shawbirch, Telford, Shropshire, TF1 3QA	DEM	A1	0.52	-76
2018	W2017/0616	Shawbirch Service Station, Shawbirch Road, Shawbirch, Telford, Shropshire, TF1 3QA	DEM	A1	0.52	328
2018	W2017/0634	Elim Church, Brookdale, Hadley, Telford, Shropshire, TF1 6LP	EXT	D2	0.07	59
2018	W2017/0651	Thomas Telford School, Caledonian Way, Old Park, Telford, Shropshire, TF3 4NW	NEW	D1	6.12	1070
2018	W2017/0761	Dawley Baptist Church, Bank Road, Dawley Bank, Telford, Shropshire, TF4 2BE	EXT	D2	0.15	100
2018	W2017/0826	Land between Horton Farm, 35 & 36 Horton Lane, Horton, Telford, Shropshire	CU	SG	0.48	-4816
2018	W2017/0840	The Horse and Jockey, Jockey Bank, Ironbridge, Telford, Shropshire, TF8 7PD	CU	A4	0.06	-576.5
2018	W2017/0854	Unit D1, Tweedale, Madeley, Telford, Shropshire, TF7 4JR	CU	A1	0.05	51.75
2018	W2017/0854	Unit D1, Tweedale, Madeley, Telford, Shropshire, TF7 4JR	CU	A1	0.05	59
2018	W2017/0854	Unit D1, Tweedale, Madeley, Telford, Shropshire, TF7 4JR	CU	D1	0.05	18
2018	W2017/0854	Unit D1, Tweedale, Madeley, Telford, Shropshire, TF7 4JR	CU	D2	0.05	351.25
2018	W2017/0856	Moor Farm, Kynnersley Drive, Lilleshall, Newport, Shropshire, TF10 9HT	CU	SG	0.19	-211
2018	W2017/0863	Longdon Hall Farm, Longdon on Tern, Telford, Shropshire, TF6 6LE	NEW	SG	0.12	120
2018	W2017/0894	Spar, 1 Acorn Way, Shawbirch, Telford, Shropshire, TF5 0LW	EXT	A1	0.03	59.3
2018	W2017/0952	Land South and East of Telford Ice Rink, Park Avenue, Southwater, Telford Town Centre, T	EXT	C1	1.70	3000
2018	W2017/0974	Land South and East of Telford Ice Rink, Park Avenue, Southwater, Telford Town Centre, T	NEW	A3		460
2018	W2017/0974	Land South and East of Telford Ice Rink, Park Avenue, Southwater, Telford Town Centre, T	NEW	C1		3760

CU - Change of Use EXT - Extension DEM - Demolition REP - Replacement Building MOB - Mobile Unit

Year	Application No	Address	Change	Use Class	Hectares	Sq M
2018	W2017/0981	Land Adjacent to Lawley Bank Court, Bryce Way, Lawley, Telford, Shropshire	NEW	D2	0.00	24.5
2018	W2017/1033	Guru Nanak Sikh Temple, 1 - 2 Hadley Park Road, Hadley, Telford, Shropshire, TF1 6PW	EXT	D1	0.33	25.53
2018	W2018/0009	11 Church Street, Wellington, Telford, Shropshire, TF1 1DD	CU	A1	0.02	-90
2018	W2018/0011	The Alexandra Inn, 10 Slaney Street, Oakengates, Telford, Shropshire, TF2 6ET	CU	A4	0.04	-50
2018	W2018/0031	Land between Preston Cottage 15 & Village Farm, Preston Upon The Weald Moors, Telford	DEM	SG	0.90	-900
2018	W2018/0048	Former Stores, Village Way, Oakengates, Telford, Shropshire, TF2 6TJ	CU	A1	0.03	-38.3
2018	W2018/0057	Masonic Building, Constitution Hill, Wellington, Telford, Shropshire, TF1 3AY	EXT	D2	0.11	298.4
2018	W2018/0106	Crescent Farm, Waters Upton, Telford, Shropshire, TF6 6NP	NEW	SG	25.09	13.71
2018	W2018/0106	Crescent Farm, Waters Upton, Telford, Shropshire, TF6 6NP	NEW	SG	25.09	16.45
2018	W2018/0135	P R House, Hortonwood 30, Hortonwood, Telford, Shropshire, TF1 7ET	CU	D2	0.03	266
Ward Totals					148.77	8373.31
Apley Castle						
2018	W2014/0746	Maxell Europe Ltd, Hortonwood, Telford, Shropshire, TF1 6DA	NEW	A1	24.57	700
Ward Totals					24.57	700
Arleston						
2018	W2015/0836	Land between Arleston Lane & Dawley Road, Arleston, Telford, Shropshire	NEW	C2	7.26	547
Ward Totals					7.26	547
Brookside						
2018	W2016/0485	The Old Rectory, Stirchley Village, Telford, Shropshire, TF3 1DY	CU	C1	0.40	-375
Ward Totals					0.40	-375
College						
2018	W2014/0146	45A High Street, Wellington, Telford, Shropshire, TF1 1JW	CU	A2	0.00	-35
2018	W2014/0146	45A High Street, Wellington, Telford, Shropshire, TF1 1JW	CU	A5	0.00	35
2018	W2014/0494	Greggs, 1-3 New Street, Wellington, Telford, Shropshire, TF1 1LU	CU	A3	18.18	18.18
2018	W2014/0727	Telford College of Arts & Technology, Haybridge Road, Wellington, Telford, TF1 2NP	EXT	D1	0.36	1332

CU - Change of Use EXT - Extension DEM - Demolition REP - Replacement Building MOB - Mobile Unit

Year	Application No	Address	Change	Use Class	Hectares	Sq M
Ward Totals					18.54	1350.18
Cuckoo Oak						
2018	W2016/0791	The Recycling Group, Halesfield 15, Halesfield, Telford, Shropshire, TF7 4LE	EXT	b1c	0.01	136
Ward Totals					0.01	136
Dawley Magna						
2018	W2016/0337	11 & 11A Burton Street, Dawley, Telford, Shropshire, TF4 2ES	CU	A1	0.00	-31
2018	W2016/0337	11 & 11A Burton Street, Dawley, Telford, Shropshire, TF4 2ES	CU	A5	0.00	31
Ward Totals					0.01	0
Donnington						
2018	W2014/0384	Venning Barracks, MOD Donnington, Humber Way, Donnington, Telford, Shropshire, TF2 8	NEW	C2	0.07	282.5
2018	W2014/0384	Venning Barracks, MOD Donnington, Humber Way, Donnington, Telford, Shropshire, TF2 8	NEW	C2	0.07	208.5
2018	W2016/0705	Unit 4, Donnington Wood Workshops, Bradley Road, Donnington, Telford, Shropshire, TF2	CU	D2	0.01	89
2018	W2016/0956	Site of Formula One Island Showrooms, St Georges Road, Donnington, Telford, Shropshire	NEW	D2	0.60	380
Ward Totals					0.74	960
Edgmond						
2018	W2016/0010	Harper Adams University College, Edgmond, Newport, Shropshire, TF10 8NB	NEW	D1	0.25	1350
2018	W2016/0800	Deepdale Farm, Chester Road, Chetwynd, Newport, TF10 8BH	NEW	SG	0.10	120
Ward Totals					0.35	1470
Ercall Magna						
2018	W2016/0661	White Gates, 4 Crudgington Green, Telford, Shropshire, TF6 6JY	CU	C1	0.01	120
2018	W2016/0802	Oakhouse Farm, Ellerdine Heath, Telford, Shropshire, TF6 6RW	NEW	SG	0.05	459
Ward Totals					0.06	579
Hadley and Leegomery						
2018	W2016/0797	Site of Haybridge Hall Flats, Haybridge Road, Hadley, Telford, Shropshire	CU	D2	0.20	-64
Ward Totals					0.20	-64

CU - Change of Use EXT - Extension DEM - Demolition REP - Replacement Building MOB - Mobile Unit

Year	Application No	Address	Change	Use Class	Hectares	Sq M
Haygate						
2018	W2015/0599	7 Crown Street, Wellington, Telford, Shropshire, TF1 1LP	CU	A1	0.01	-204
2018	W2016/1074	The Birches, 57 Wrockwardine Road, Wellington, Telford, Shropshire, TF1 3DA	EXT	C2	0.50	210
2018	W2016/1074	The Birches, 57 Wrockwardine Road, Wellington, Telford, Shropshire, TF1 3DA	CU	C2	0.50	500
Ward Totals					1.01	506
Horsehay and Lightmoor						
2018	W2013/0902	Hughes Transport Ltd, The Garage, Wellington Road, Horsehay, Telford, Shropshire, TF4 3	NEW	C3	0.65	-697
2018	W2014/0559	Woodlands Farm, Woodlands Lane, Horsehay, Telford, Shropshire, TF4 3QF	CU	Other	0.28	-2800
Ward Totals					0.93	-3497
Ironbridge Gorge						
2018	W2011/1102	Land off, Beech Road, Madeley, Telford, Shropshire	DEM	C2	5.98	-1986
2018	W2011/1102	Land off, Beech Road, Madeley, Telford, Shropshire	NEW	C2	5.98	233.28
2018	W2011/1102	Land off, Beech Road, Madeley, Telford, Shropshire	NEW	SG	5.98	687
2018	W2011/1102	Land off, Beech Road, Madeley, Telford, Shropshire	DEM	SG	5.98	-255
2018	W2014/1035	The Valley Hotel, 22 Buildwas Road, Ironbridge, Telford, Shropshire, TF8 7DW	EXT	A3	0.67	72
2018	W2014/1035	The Valley Hotel, 22 Buildwas Road, Ironbridge, Telford, Shropshire, TF8 7DW	EXT	C1	0.67	1041
2018	W2016/0297	Strethill Lodge, 10 Strethill Road, Coalbrookdale, Telford, Shropshire, TF8 7EY	EXT	C1	0.00	85.62
2018	W2016/0455	69 Bower Yard, Ironbridge, Telford, Shropshire, TF8 7JP	CU	A3	0.00	13.6
2018	W2016/0562	Site of Lincoln Grange Nursing Home, Lincoln Hill, Ironbridge, Telford, Shropshire	CU	C2	3.50	-34990
Ward Totals					28.76	-35098.5
Ketley and Oakengates						
2018	W2016/0197	Site of The Stafford Arms, Main Road, Ketley Bank, Telford, Shropshire	CU	A4	0.09	-145
2018	W2016/0263	Ketley Community Recycling Centre (CRC), Whitchurch Drive, Telford, Shropshire, TF1 5A	CU	SG	0.30	-3000
Ward Totals					0.39	-3145
Lawley and Overdale						
2018	W2015/0053	4 & 5 Hazeldine House, Grange Central, Telford Town Centre, Telford, Shropshire, TF3 4JL	CU	A2	0.01	-214

CU - Change of Use EXT - Extension DEM - Demolition REP - Replacement Building MOB - Mobile Unit

Year	Application No	Address	Change	Use Class	Hectares	Sq M
2018	W2015/0053	4 & 5 Hazeldine House, Grange Central, Telford Town Centre, Telford, Shropshire, TF3 4JL	CU	D1	0.01	214
2018	W2016/0168	Land adjacent Buena Vista, 6 The Crest, Old Park, Telford, Shropshire	CU	SG	0.49	-4900
2018	W2016/0981	Land fronting Unit 1, Rampart Way, Telford Town Centre, Telford, Shropshire	NEW	A3	0.97	155
Ward Totals					1.49	-4745
Madeley						
2018	W2014/0162	Unit 8, Madeley Industrial Estate, Station Road, Madeley, Telford, Shropshire, TF7 5EF	CU	D2	0.02	179.95
2018	W2014/0263	Unit A, Madeley Shopping Malls, High Street, Madeley, Telford, Shropshire, TF7 5BQ	CU	D1	0.00	-127.7
2018	W2014/0263	Unit A, Madeley Shopping Malls, High Street, Madeley, Telford, Shropshire, TF7 5BQ	CU	D2	0.00	127.7
2018	W2014/0357	Majestic Distribution Bitec, Tweedale North, Madeley, Telford, Shropshire, TF7 4JT	EXT	A1	0.10	50
2018	W2015/0179	4 Court Street, Madeley, Telford, Shropshire, TF7 5ED	CU	A1	0.00	-36.5
2018	W2015/0179	4 Court Street, Madeley, Telford, Shropshire, TF7 5ED	CU	A2	0.00	36.5
2018	W2016/0407	Former Severn Valley Motorsport Ltd/Madeley Testing Station, Ironbridge Road, Madeley, T	DEM	SG	0.15	-472
Ward Totals					0.27	-242.05
Malinslee						
2018	W2015/0817	Asda, Malinsgate, Telford Town Centre, Telford, Shropshire, TF3 4HZ	CU	A1	0.00	-15
2018	W2015/0817	Asda, Malinsgate, Telford Town Centre, Telford, Shropshire, TF3 4HZ	CU	SG	0.00	15
2018	W2017/0024	Webb House, King Street, Dawley, Telford, Shropshire, TF4 2AA	EXT	A1	0.49	25
2018	W2017/0024	Webb House, King Street, Dawley, Telford, Shropshire, TF4 2AA	EXT	D1	0.49	193
Ward Totals					0.98	218
Newport South						
2018	W2014/0333	Land corner of, Stafford Road/A41, Newport, Shropshire	NEW	C2	4.89	2123
Ward Totals					4.89	2123
Priorslee						
2018	W2014/0980	Land between, Castle Farm Way and A5, Priorslee, Telford, Shropshire	CU	SG	61.70	-617000
Ward Totals					61.70	-617000

CU - Change of Use EXT - Extension DEM - Demolition REP - Replacement Building MOB - Mobile Unit

Year	Application No	Address	Change	Use Class	Hectares	Sq M
St. Georges						
2018	W2015/1008	Former Garage, New Street, St Georges, Telford, Shropshire	DEM	SG	0.13	-1301
2018	W2016/0903	Site of Unit 1 & Unit 5 Redland Industrial Estate, Station Hill, St Georges, Telford, Shropshir	NEW	B1c	1.75	640
2018	W2016/0903	Site of Unit 1 & Unit 5 Redland Industrial Estate, Station Hill, St Georges, Telford, Shropshir	CU	SG	1.75	-2408
Ward Totals					3.63	-3069
The Nedge						
2018	W2013/1020	Defence Support Group (DSG), Sapphire House, Stafford Park 6, Stafford Park, Telford, Sh	CU	C1	1.39	9000
2018	W2015/1041	Budgen Motors, Stafford Park 1, Stafford Park, Telford, Shropshire, TF3 3BD	NEW	SG	0.70	40
2018	W2016/0194	Premier Stores, Unit 1, Calcott, Stirchley, Telford, Shropshire, TF3 1YQ	CU	A1	0.30	-80
2018	W2016/0194	Premier Stores, Unit 1, Calcott, Stirchley, Telford, Shropshire, TF3 1YQ	CU	A3	0.30	80
Ward Totals					2.69	9040
Wrockwardine						
2018	W2014/0113	Former British Sugar site, Allscott, Telford, Shropshire	NEW	A1	36.60	2800
2018	W2014/0113	Former British Sugar site, Allscott, Telford, Shropshire	NEW	D1	36.60	10000
2018	W2014/0113	Former British Sugar site, Allscott, Telford, Shropshire	NEW	D2	36.60	7600
2018	W2016/0551	Highbury Villa, Drury Lane, Rodington, Telford, Shropshire, SY4 4RG	CU	C1	0.11	110
Ward Totals					109.91	20510
Wrockwardine Wood and Trench						
2018	W2014/0222	Duke of York, Trench Road, Trench, Telford, Shropshire, TF2 7DP	CU	A4	0.00	-65
2018	W2014/0222	Duke of York, Trench Road, Trench, Telford, Shropshire, TF2 7DP	CU	SG	0.00	65
2018	W2015/0572	Site of Simply The Best Valeting, Plough Road, Wrockwardine Wood, Telford, Shropshire	CU	SG	0.10	-1000
Ward Totals					0.10	-1000
Borough Totals					417.67	-621723.1

CU - Change of Use EXT - Extension DEM - Demolition REP - Replacement Building MOB - Mobile Unit