



Telford & Wrekin
Co-operative Council

Protect, care and invest
to create a better borough

Guide to secondary school admissions in Telford and Wrekin

2026/27

**Closing
date** for
applications is
**31 October
2025**

Apply online at: www.telford.gov.uk/admissions

Key dates for admission to secondary school in September 2026

September to October 2025

Parents and pupils visit schools (see next page for details)

From September 2025

You are advised to apply to four schools, including your catchment area/nearest school.

www.telford.gov.uk/admissions

31 October 2025 – Application closing date

Closing date for all secondary applications including those for all pupils with an Education, Health and Care Plan.

15 February 2026

Children with an Education, Health, and Care Plan (EHCP) will be informed of which school has been named in their plan.

2 March 2026 – Secondary National Offer Day

You will be sent an email by the School Admissions Team informing you of the outcome of your application.

1 April 2026

Deadline for appeals to be lodged for community/voluntary aided schools.

April to June 2026

Appeals heard by independent appeals panel.

7 and 8 July 2026

Year 6 children will visit their new schools.

September 2026

Children start secondary school

School visits

School	Open Mornings/Days	Open Evenings
Burton Borough School www.burtonborough.org.uk Email: burton.borough@taw.org.uk Tel: 01952 951408	Thursday 2 and Friday 3 October 9.00am – 11am Booking via school website	Wednesday 1 October 5pm – 8pm. Booking via school website
Charlton School www.charlton.uk.com Email: school@charlton.uk.com Tel: 01952 386800	Thursday 9 October. Guided tours 9.20am and 11.40am. Advance booking required via telephone call to school.	Thursday 9 October 5pm – 8pm. Presentations at 5.30pm and 7pm
Ercall Wood Academy www.ercallwood.co.uk Email: admin@ercallwood.co.uk Tel: 01952 387300	Guided Tours: Wednesday 1/2/3 October 9.10 – 9.40am 11 – 11.30am 11.40am – 12.10pm Please book via school reception (max two adults plus child if required).	Thursday 2 October, 6pm – 8pm
Haberdashers' Abraham Darby haberdashersabrahamdarby.co.uk Email: mandie.rowson@taw.org.uk Tel: 01952 386000	Tours available from 3pm Friday 3 October until Friday 17 October. Please contact school for further information	Thursday 2 October 6pm – 8.30pm
Haberdashers' Adams www.adamsgs.uk Email: reception@adamsgs.uk Tel: 01952 953810	Open week 19 January – 23 January 2026. Further information is available on the school website.	N/A
Hadley Learning Community Secondary hadleylearningcommunity.org.uk Email: hlcadmin@lct.education Tel: 01952 951411	Tuesday 30 September and Wednesday 1 October 9am – 10.30am Booking by appointment only via school.	Thursday 25 September 5pm – 8pm.
Holy Trinity Academy www.holytrinity.academy Email: enquiries@holytrinity.academy Tel: 01952 386100	Tuesday 7 October 2025, 3pm until 5.30pm	Tuesday 7 October 3pm – 5.30pm

Madeley Academy www.madeleyacademy.com Tel: 01952 527700 Admission Enquiries to Johnathan Boyle, Deputy Headteacher	N/A	Monday 6 October 2025 4.30pm – 7.30pm Head teacher presentations at 5.15pm and 6pm
New Road Academy https://newroad.lct.education Tel: 01952 951412	Please contact school directly for further information.	Tuesday 30 September 5pm – 7.30pm Headteacher presentations at 5.30pm and 6.30pm
Newport Girls' High School www.nghs.org.uk Email: admissions@nghs.org.uk Tel: 01952 797500		Tuesday 24 March 4.30 – 7pm. Book online via school website from February 2026.
The Telford Langleys School www.telfordlangleschool.co.uk Email: info@telfordlangleschool.co.uk Tel: 01952 386700	Tours to be held 23 September, 8.30am and 9.30am. Booking by appointment via School website, available from the Autumn term.	Thursday 25 September 5.30pm – 8pm. Presentation by Head Teacher 6pm and 7pm
Telford Park School www.telfordparkschool.co.uk Email: park.admissions@taw.org.uk Tel: 01952 387400	Saturday 11 October, 10am – midday. Booking via QR Code, available on school website.	Thursday 9 October 4pm to 6pm.

Please visit [Secondary School Admissions](#) for updated information.





Contents

1. Secondary admissions	6
■ Before you apply	6
■ How to apply	6
■ How applications are considered	9
■ Application outcomes	10
■ Summary of secondary offers for 2024/25	11
■ Waiting lists and appeals	12
■ Frequently asked questions	13
2. Children with an Education, Health and Care Plan (EHCP)	14
3. In-year admissions	20
4. Post-16 and sixth form admissions	22
5. School information	23
■ Catchment area maps	23-27
■ Secondary school details	28-29
6. Additional information	30
■ School attendance	30
■ Leave in term time (holidays)	30
■ School travel assistance	31
■ Free school meals	32
■ School uniform and clothing	32
■ Child employment and performance licensing	33
■ School governors	34
■ Useful contacts	34

1

Secondary admissions

Children start secondary school after the end of Year 6 in primary school. A child born between 1 September 2014 and 31 August 2015 should start secondary school in September 2026.

When to make your application

If your child is due to begin secondary school in September 2026, you must complete and submit your application by **31 October 2025**.

Children with an Education, Health and Care Plan (EHCP) also must apply by 31 October 2025.

What you should do before you apply

Making the transition to secondary school is a significant milestone in your child's life. It is essential to carefully consider which schools to apply to.

Visit local schools to help you decide. Meeting staff at schools and hearing what daily school life is like will assist you in deciding which school would be best for your child.

You should consider how your child will get to and from school. You will generally be responsible for your child's travel arrangements and any associated costs if you decide on a school that is not your nearest or catchment area school. See page 27 for more details.

You should also look at:

- the school's website or prospectus (information about how the school operates).
- the school's most recent Ofsted inspection report (www.ofsted.gov.uk/reports)
- the school's performance results (www.education.gov.uk/schools/performance)

You should also consider the likelihood of being offered places at the schools you prefer. This booklet explains the application process and how school admission decisions are made.

How to apply

If you live in Telford and Wrekin, you must complete the application via the local authority, even if you want to apply to schools outside of the Borough. Apply online at www.telford.gov.uk/admissions

For assistance or support in completing the application, email admissions@telford.gov.uk

Once you have submitted your application you will receive an instant email confirmation. If you need to make any changes to your application after submission email admissions@telford.gov.uk

If you live outside of Telford and Wrekin and want to apply to a school in the Borough you should apply via the local authority where you live.

Contact information for nearby local authorities is provided on page 30.

1

Secondary admissions

You cannot list independent (private) schools on your application. Instead, you should apply directly to these schools. Applications to independent schools do not form part of the nationally coordinated admissions process.

The number of schools you can apply for

We strongly advise that you apply to four local secondary schools.

When listing preferences, make sure to rank the schools in order of priority, with your most preferred school being your first preference.

This ranking will determine which school is offered if your child qualifies for admission at more than one of the schools you have applied to.

You must submit an application to the local authority, even if you have already completed a form at the school

Some voluntary aided (church) and grammar schools require a 'supplementary information form' to gather additional information that will enable the school to consider

your application under its admissions criteria.

These forms should be completed and returned directly to the respective schools. You must also apply to your local authority.

Applying to a Selective Grammar School

There are two selective grammar schools within Telford and Wrekin:

Haberdashers' Adams

which admits boys and girls in Years 7,8 and 9, boys only in Years 10 and 11. In addition, the school also admits girls in the sixth form (Years 12 and 13).

Newport Girls High School

which admits girls only from years 7 to 13.

To apply for a place at Haberdashers' Adams or Newport Girls High School for Year 7 in September



1

Secondary admissions

2026 you will have needed to register for the entrance test by 27 June 2025.

The test will be held on 15 September 2025.

Applying to Thomas Telford School

Thomas Telford School is a city technology college, and the rules of admission differ from local authority maintained schools and academies.

1. Parents must apply directly to the school either by downloading the form and relevant documentation from the school's website www.ttsonline.net or by telephoning the school for an application form. Parents cannot list Thomas Telford School on their online application form.

2. Application forms are available from 1 September 2025.

3. The deadline for application is 4pm 22 September 2025. No applications will be accepted after this date.

4. Assessments will take place in October 2025. Applicants who do not attend

for assessment will not be considered further.

5. Applicants will be informed of the outcome of their application by letter posted on 27 February 2026 and those who have been offered a place will be asked to complete and return an acceptance form by 4pm on 9 March 2026.

You can visit the school's website for more information on the admissions policy for Thomas Telford School at www.ttsonline.net

Applying to Madeley Academy

Those that list Madeley Academy as one of their preferred schools will be invited to attend a non-verbal reasoning assessment in November 2025. Based on this assessment all applicants will be placed into one of five ability bands, with an equal number of places offered to children in each band. The assessment results will be used to ensure that the Academy admits a full range of ability of applicants.

You must complete an application for a secondary place, even if your child already attends a primary school on the same site

Children do not have an automatic right to transfer from primary to secondary school. You must make an application for a secondary place.

Twins and multiple birth children

If you have twins or multiple birth children, you will need to make a separate application for each child.

Parental responsibility

Both parents with parental responsibility or those with legal responsibility for a child through a court order should jointly agree on which schools to apply to.

Where parents cannot agree, they should seek independent legal advice. The local authority cannot act as a mediator or arbitrator where parents are not in agreement.

Your home address

You should apply using the address where you (as a parent with parental

1

Secondary admissions

responsibility or legal custody) and your child live as your only or main place of residence.

Applications from a relative's address can only be used where they have legal responsibility for the child through a court order. You cannot use the address of a relative, friend, childcare provider, workplace, or business for your application.

If your child lives between two addresses and/or parents have shared custody of a child, you should apply using the address your child lives at most of the time. Where this time is equally shared, use the address where child benefit is claimed.

The address used for each application will be checked against Council Tax records. Additional information may be requested from you where your address cannot be verified. An application may be withdrawn where it is found to be fraudulent or misleading.

Changing your address

If you move before or after the application closing date 31 October 2025, please email the School Admissions Team

at admissions@telford.gov.uk to update your address on the application. Depending on the timing of your move, it may still be possible to change your choice of schools after the closing date.

A change in your circumstances

If an older child transfers to another school after 31 October 2025 and you need to change your younger child's school preferences because of this, contact the School Admissions Team. Depending on the timing of the transfer, it may be possible to update your school preferences.

If there are changes in medical circumstances within the family after 31 October 2025 that necessitate a place at a particular school, please contact the School Admissions Team.

Children of UK service personnel and crown servants

Families of UK service personnel and crown servants often move at short notice. If we receive an application along with an official letter

from the MOD, FCO or GCHQ, stating the relocation date, we will process applications in advance of the relocation based on the address of quarters that the family have been allocated.

Applying after the closing date

Applications received after 31 October 2025 will be processed after all on-time applications have been considered. Many schools will not have any places available after considering on-time applications.

How applications are considered

The School Admissions Team processes applications and coordinates decisions for children in Telford and Wrekin, including those applying to schools in other local authority areas. This is part of a nationally coordinated admissions process, which seeks to ensure that as many children as possible are offered a school place promptly.

Your application will be considered according to the admissions criteria for each

1

Secondary admissions

school. If your child qualifies for a place at more than one of your preferred schools, they will be offered a place at one school only. This will be the highest preference school at which an offer can be made.

Making the decisions on applications

For voluntary aided schools and academies, the governing body or the academy trust will make admission decisions based on the information provided in your application and the school's supplementary form.

Admission policies and oversubscription criteria for all schools and academies in Telford and Wrekin can be found on their respective websites or on our website.

If one or more of the schools you have applied for are outside Telford and Wrekin, the admission authority for that school will make the decision and notify the School Admissions Team.

Once all admission decisions are made, the School Admissions Team will then

coordinate the offers of places as explained above.

The number of places available at each school in Telford and Wrekin

The number of children who can be admitted to each school in Telford and Wrekin for the school year 2026/27 is detailed on pages 24 and 25 of this booklet.

Catchment areas

It is highly recommended that you list your catchment area school as one of your preferred schools as your child's application to the school in your catchment area will be given priority.

A map of school catchment areas is on page 23. You can also use our [catchment school finder](#) to determine which catchment you live in.

Application outcomes

If your application was received on or before the closing date (31 October 2025), the School Admissions Team will notify you of the outcome by email on **2 March 2026**.

Children with an Education, Health, and Care Plan are notified of which school has been named in their plan on **15 February 2026**.



Summary of secondary transfer offers for 2024/25

School name	Places available	Total on time preferences received	Number of on time 1st preferences	Number of on time preferences allocated	Children allocated school as nearest alternative offer	Home to school, straight line distance for last place allocated in metres (over-subscribed schools only).	No. of appeals heard	No. of appeals heard
Charlton School	240	529	228	240	0	4940	5	0
Ercall Wood Academy	240	404	147	212	23	10073*	0	0
Haberdashers' Abraham Darby	180	407	131	180	0	3643*	12	1
Haberdashers' Adams	135	437	232	135	0	n/a	1	0
Hadley Learning Community Secondary Phase	240	853	365	240	0	3103**	24	5
Holy Trinity Academy	210	631	278	210	0	1726*	18	0
Madeley Academy	180	881	439	180	0	Band 1: 2055 Band 2: 1633 Band 3: 1578 Band 4: 1051 Band 5: 728	92	28
New Road Academy	180	241	89	169	2	5356	0	0
Newport Girls High School Academy	240	249	148	167	47	8619	0	0
The Burton Borough School	120	334	193	120	0	n/a	7	0
The Telford Langleigh School	242	338	157	201	3	15911	0	0
The Telford Park School	240	477	172	239	1	4843	1	0

* It was possible to offer a place to all children living within the catchment area for these schools.

** The last child offered a place, lived outside the catchment area and had a sibling at the school.

1

Secondary admissions

Accepting the school place offered

If you are happy with the school place offered for your child there is nothing you need to do. The school will contact you with further information about starting school in September.

If you do not have an offer at any of the schools you have applied for

If an offer cannot be made at any of the schools you applied for, a place will be allocated at your catchment school or the nearest school to your home address where there is a vacancy after all applications have been considered.

Children not allocated a place at a preferred school will automatically be added to the waiting list for all schools listed on the application form.

The outcome email will also provide information on how to add your child's name to the waiting lists of other schools and how to exercise your right of appeal.

School waiting lists

Parents can request to be added to the waiting list for their preferred school(s) after National Offer Day.

Waiting lists are ordered using the oversubscription criteria in the admission policy for each school. Therefore, a child's position on the waiting list can go down as more names are added.

You will need to contact voluntary aided schools, foundation schools and academies directly to confirm their waiting list procedures. Schools outside of the Borough may operate waiting lists differently so you should check with the admission authority.

How to appeal against a decision not to offer a place

You have the right to appeal for a place at any of the schools listed on your application form for which a place could not be offered to your child.

To appeal for a place at school in Telford and Wrekin, you will need to appeal directly to the school.

Appeal timetable

Your appeal will normally be heard within 40 school days of the appeal closing date and before your child is due to start secondary school in September.

The independent appeal panel

An independent panel of three people with knowledge of education will hear your appeal. None of the panel members will have any connection with the school or admissions authority. They are served by an independent clerk who will contact you to confirm the date, time and venue for the hearing and invite you to attend. The appeal panel's decision is final and both you and the local authority are required to accept it.



1

Frequently asked questions



Q. Is my child guaranteed a place at one of their four preferred schools?

Most families will be offered a place at one of their four preferred schools; however, this cannot be guaranteed. Unfortunately, it is not always possible for everyone to get a place at their most preferred school.

When a school receives more applications than the number of places available, not all children can be admitted. Therefore, it is important to fully consider the likelihood of your child getting a place at a preferred school before you make your application.

Q. What happens if I only apply to one school?

Your child will not gain any additional priority by only applying to one school.

Applying to multiple schools does not reduce the likelihood of being offered a place at your most preferred school.

If it is not possible to offer a place at the school you applied to, a place will be allocated at your catchment or nearest school with available places once all applications have been considered.

The schools you may have considered as second, third, or fourth preferences may have already filled their places.

To increase the likelihood of your child getting a place at one of your preferred schools, it is advised to apply to four schools.

Q. Is my child more likely to be offered a place at my first preference school?

Applications for each school are considered in line with the school's admissions criteria with no consideration given to whether it is the first, second, third or fourth preference school. However, if your child qualifies for a place at more than one school, the order in which you listed your preferences on your

application form will determine the school you are offered.

This school will be the highest listed preference at which an offer can be made. Your application for schools listed as lower preferences will no longer be considered. This is why it is important to list the schools you are applying to in order of preference on the application form.

Q. Is my child guaranteed a place at my preferred school if my neighbours children go to that school?

No. The number of applications a school receives each year varies along with factors such as where families live and the number of children with older siblings attending the school.

You can refer to the information on page 11 to see how places were offered last year. This will give you an indication of the likelihood of being offered a place, but it cannot guarantee that your child will be offered a place at your preferred school, even if they would have been offered a place in previous years.

2

Children with an Education, Health and Care Plan

If your child has an Education, Health and Care Plan you must apply online at www.telford.gov.uk/admissions by 31 October 2025.

You can make preferences for mainstream and/or special schools. Information on all schools in Telford and Wrekin and the way in which we support special educational needs and disability can be found in the SEND Local Offer at www.telfordsend.org.uk.

The local authority is committed to inclusion and will endeavour to support children in mainstream schools wherever possible and appropriate. Most children who attend a mainstream primary school with an Education Health and Care Plan will transfer to a mainstream secondary school. If your child currently attends a mainstream primary school, it is important that where your first preference is a special secondary school then you name a mainstream secondary school for your second, third and fourth preferences. This is to increase your chances of being allocated a school that you have considered. You will want to carefully consider the views of your child's current school or setting and other

professionals who work with your child when making a preference.

If your request is for a special school placement, this must have been discussed at your child's last Annual Review meeting which must involve outside agencies. The annual review report must have been sent to the Local Authority's SEND Team by the school, and it must clearly provide evidence that your child meets suitability criteria for the preferred special school. The number of places in special schools are limited, which means that it may not always be possible to allocate your child a place at your preferred school.

In the circumstances that the local authority does not consider that a special school is suitable, where you have not named a mainstream school in your second or third preferences, the Local Authority will consult with the closest appropriate mainstream school to your home address to secure a placement.

If your child currently attends a special primary school and your preference is to transfer to a special secondary school, then you must still apply

for a place, even where a special school is all age (for example parents of children in the Bridge School at Year 6 must still apply for a place at the Bridge School in Year 7, where that is the preference).

The Local Authority must comply with your preference for a maintained school unless:

- the school is unsuitable to the child's age, ability, aptitude, or SEN, or
- The placement would be incompatible with the efficient education of the other children with whom your child would be educated, or
- The placement would be incompatible with the efficient use of resources.

You may also make representations to the

2

Children with an Education, Health and Care Plan

local authority for a place in an independent or non-maintained school. The Local Authority is required to consider this preference but will consider maintained schools too. You will need to contact the SEND Team directly on sendandinclusion@telford.gov.uk to give a preference for an independent or non-maintained school.

School places are allocated in accordance with the Education Act 1996 and Children and Families

Act 2014, which (EHCPs) requires that a decision is made after considering the child's special educational needs, parental preference and the formal view of the schools requested.

The local authority is required to amend your child's EHC Plan by 15 February 2026 and name the secondary school your child will be attending from September 2026.

If you do not apply for a place online, we will:

- Consider all information available such as the most

recent Annual Review and current EHC Plan.

- Proceed to consult with the closest appropriate school setting to secure a placement

It is therefore important that you apply on time to express a preference of a named school for your child.

If we cannot offer a place at your preferred school, you will have the right of appeal to the Special Educational Needs and Disability Tribunal (SENDIST).

If you would like advice and support in your decision making [Telford and Wrekin SENDIASS](#) (Information, Advice and Support Service) can provide comprehensive, quality, and impartial advice to parents of young people and children with special educational needs.

Policy for Inclusive Education

Telford & Wrekin Council promotes an inclusive approach to education which enables all children to have their educational needs



2

Children with an Education, Health and Care Plan

met within their local school wherever possible

The Council believes that inclusive education is an effective way to combat discriminatory attitudes and contribute towards the creation of welcoming and inclusive communities.

The view of inclusive education is based on the principle of Entitlement.

Telford & Wrekin Council believes that all children and young people are entitled to:

- Have equality of opportunity and access to education.
- Learn, participate, and form friendships with peers within their local community.
- Have their skills developed, and their abilities nurtured to enable them to maximise their potential
- and attainment and to enhance self-esteem.
- Have any special educational needs identified as early as possible.
- Receive professional support, advice, and resources to meet identified needs.
- Be treated with respect and have their views and opinions considered.



2

Children with an Education, Health and Care Plan

Specialist schools

Queensway (North site) - Social Communication/Autistic Spectrum Condition

Contact telephone number: 01952 951414

Address: Queensway, Hadley, Telford, TF1 6AJ

Website: <https://queensway.school>

Age Range (mainly): 10-16

Queensway (South site) - Social, Emotional and Mental Health

Contact telephone number: 01952 951414

Address: Hinkshay Road, Dawley, Telford, TF4

3PP Website: <https://queensway.school>

Age Range (mainly): 9-16

Linden Secondary Specialist School- Social, Emotional and Mental Health

Contact telephone number: 01952 385601

Address: Webb Crescent, Dawley, Telford, Shropshire, TF4 3DU

Website: <http://www.lindencentre.co.uk/contact-us/linden-secondary-specialist-school>

Age Range (mainly): 11-16

Southall School - Complex Learning Needs

Contact telephone number: 01952 387600

Address: Off Rowan Avenue, Dawley, Telford TF4 3PN

Website: www.southallschool.com

Age Range (mainly): 11-16

2

Children with an Education, Health and Care Plan

The Bridge School - Severe Learning Difficulties

Contact telephone number: 01952 387108

Address: Hadley Learning Community, Waterloo Road, Hadley, Telford TF1 5NQ

Website: www.thebridgeschool.co.uk

Age Range (mainly): 5-16

Admission criteria for each school can be found on their websites.

Specialist hubs – communication and interaction along with cognition and learning needs

Southall – Langley Specialist Hub

Age range 11-16

Tel: 01952 386700

Specialist Provision Hubs - SEND - Local offer (telfordsend.org.uk)

2

Children with an Education, Health and Care Plan



3

In-year admissions



In-year admission is where a child starts secondary school at a time other than the normal point of entry in Year 7. This is often when a child has moved into the Telford and Wrekin area from another part of the UK or overseas.

How to apply

The Telford and Wrekin School Admissions Team co-ordinate in-year admissions for most schools and academies in the Borough. Full details on how the Coordinated In-Year Admissions Scheme in Telford and Wrekin operates is available on our website: www.telford.gov.uk/admissions

To apply for an in-year place in Telford and Wrekin you should apply online at www.telford.gov.uk/admissions. This applies to both residents of Telford and Wrekin and families who live outside of the Borough who wish to apply for a place at a local school.

To apply to a school outside of Telford and Wrekin, you will either need apply directly to the relevant local authority or directly to the school, dependent on how in-year

admissions operate in that area.

Further information will be available on the relevant local authorities website. Contact details for nearby local authorities are provided on page 30.

Application outcomes

The School Admissions Team will normally let you know the decision within 15 school days of receiving an in-year application. Where a child is offered a place, they will be admitted as soon as possible.

Unplaced children

If your family has recently moved to Telford and Wrekin and your child does not have a school place or it is not possible to offer a place at one of the schools applied for then you will be informed of which local schools still have availability.

You should notify the School Admissions Team of your preferred school so we can help secure a place promptly.

If no local school places are available, your child may be referred for placement under the Fair Access Protocol.

Telford and Wrekin Fair Access Protocol

All schools and academies in Telford and Wrekin participate in the Fair Access Protocol. The protocol sets standards for dealing with applications where families who move into the Borough and are not able to access a local school place. The Fair Access Panel in Telford and Wrekin meets every three to four weeks during term time to ensure that children do not face long delays in accessing a school place.

3

In-year admissions

The panel will take into consideration where you live, the schools you have applied to, and which school is best placed to accommodate additional children. A place at your preferred school is not guaranteed.

The protocol also supports children who may need to access alternative education due to specific circumstances which may make it difficult to place them in a mainstream school.

Transferring to another school

If you wish to transfer your child from one secondary school in Telford and Wrekin to another this can be arranged by the School Admissions Team. You should first speak with staff at your child's current school to discuss any issues or concerns.

It is not always possible for a child to transfer to another school if that school is already full or if there are more applicants than places available at the time you make your application. Your child must, therefore, continue to attend school while awaiting a transfer.

If there are no places available at the school(s) you would

like your child to transfer to, you can request for your child to be placed on the school's waiting list. Waiting lists are held in line with the school's admission criteria.

You will need to re-apply during the summer holidays every year if you want your child to remain on the waiting lists for the school(s) you wish for them to transfer to.

University Technical College (UTC) and Studio Schools

University Technical Colleges (UTCs) are education institutions established in partnership with universities. They specialise in one or two technical subjects. Alongside their specialist focus, UTCs offer a broad curriculum similar to that of a typical 11-18 secondary school, including core subject like English and Mathematics.

Studio Schools are like UTCs in that they have employer involvement in the curriculum and focus on developing the skills needed for employment, involving personal coaching and work experience, alongside a similar curriculum to a typical 11-18 secondary.

Below is a list of the nearest UTCs and Studio Schools to Telford and Wrekin, which you may wish to consider applying to:

- Aston University Engineering Academy www.auea.co.uk
- Birmingham Ormiston Academy www.boa-academy.co.uk
Health Futures UTC, West Bromwich www.healthfuturesutc.co.uk
- JCB Academy, Rocester www.jcb-academy.com
- WMG Academy for Young Engineers (Solihull) www.wmgacademy.org.uk
- Waverley Studio College Birmingham www.waverleystudiocollege.co.uk
- Walsall Studio School www.studioschoolandsixth.org

If your child is currently in Year 9 and you decide that you would like to apply for a place at any of these schools, you will need to apply directly to them. Details of how to apply are on their websites.

4

Post-16 and sixth form admissions

All schools have a statutory duty to secure impartial careers guidance for all Year 8 to 13 students to inspire young people to fulfil their potential and to make them aware of all opportunities open to them. We strongly recommend that your child discuss their options with a careers adviser in their current school or college.

The raising of the participation age

The Government has increased the age to which all young people in England must continue in education or training, requiring them to continue until the end of the academic year in which they turn 18. Raising the participation age does not mean young people must stay in school; they will be able to choose one of the following options post 16:

- full time education, such as school, college or home education
- an apprenticeship
- part-time education or training if they are
- employed, self-employed or volunteering full time (which is defined as 20 hours or more per week)

For more information about this area please see School leaving age - [GOV.UK](https://www.gov.uk) (www.gov.uk)

Post 16 provision

There are six schools in Telford and Wrekin which currently offer a sixth form:

- Haberdashers' Abraham Darby
- Haberdashers' Adams
- Holy Trinity Academy
- Madeley Academy
- Newport Girls High School
- Thomas Telford School

All schools with sixth forms and further education colleges are self-governing institutions and responsible for its own admissions. To apply, families should contact the school/college directly.

Additionally, students may prefer to continue their education at:

Telford College, Haybridge Road, Wellington, Telford TF1 2NP

Tel: 01952 642200

Email: info@telfordcollege.ac.uk

To find out about almost 300 A-levels, BTECs and apprenticeships across these six schools and Telford College, making Telford an inspirational hub for learning, opportunity and achievement visit our 16 to 19 prospectus at www.telford1619.com

Year 11 pupils with an EHCP

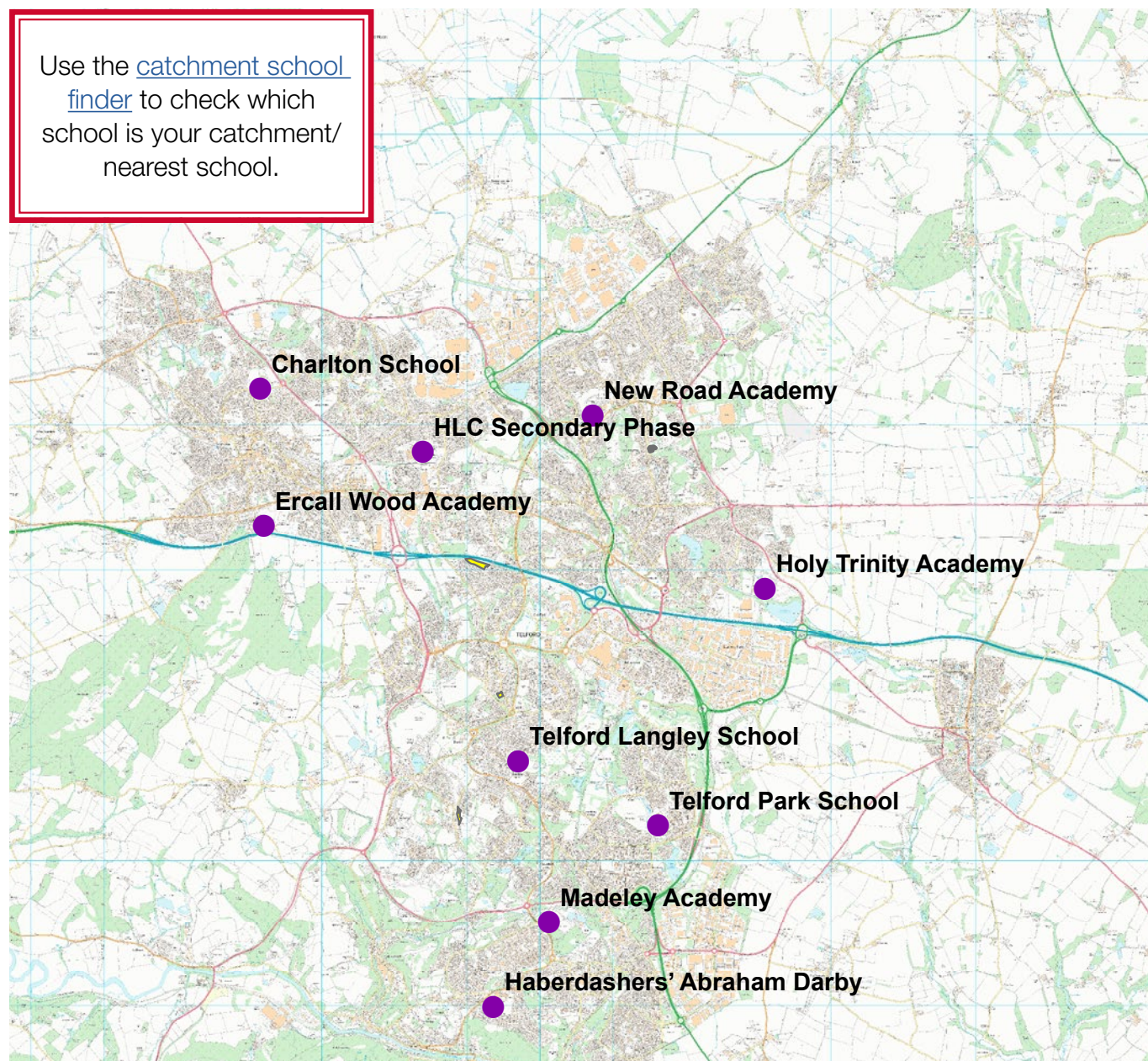
There is a separate process in place for young people with an Education Health and Care Plan and a letter will be sent to those young people outlining the next steps. If you have any queries, please contact the SEND team on 01952 385399 or email sendandinclusion@telford.gov.uk

5

School information

Secondary schools in Telford and Wrekin map

Use the [catchment school finder](#) to check which school is your catchment/nearest school.



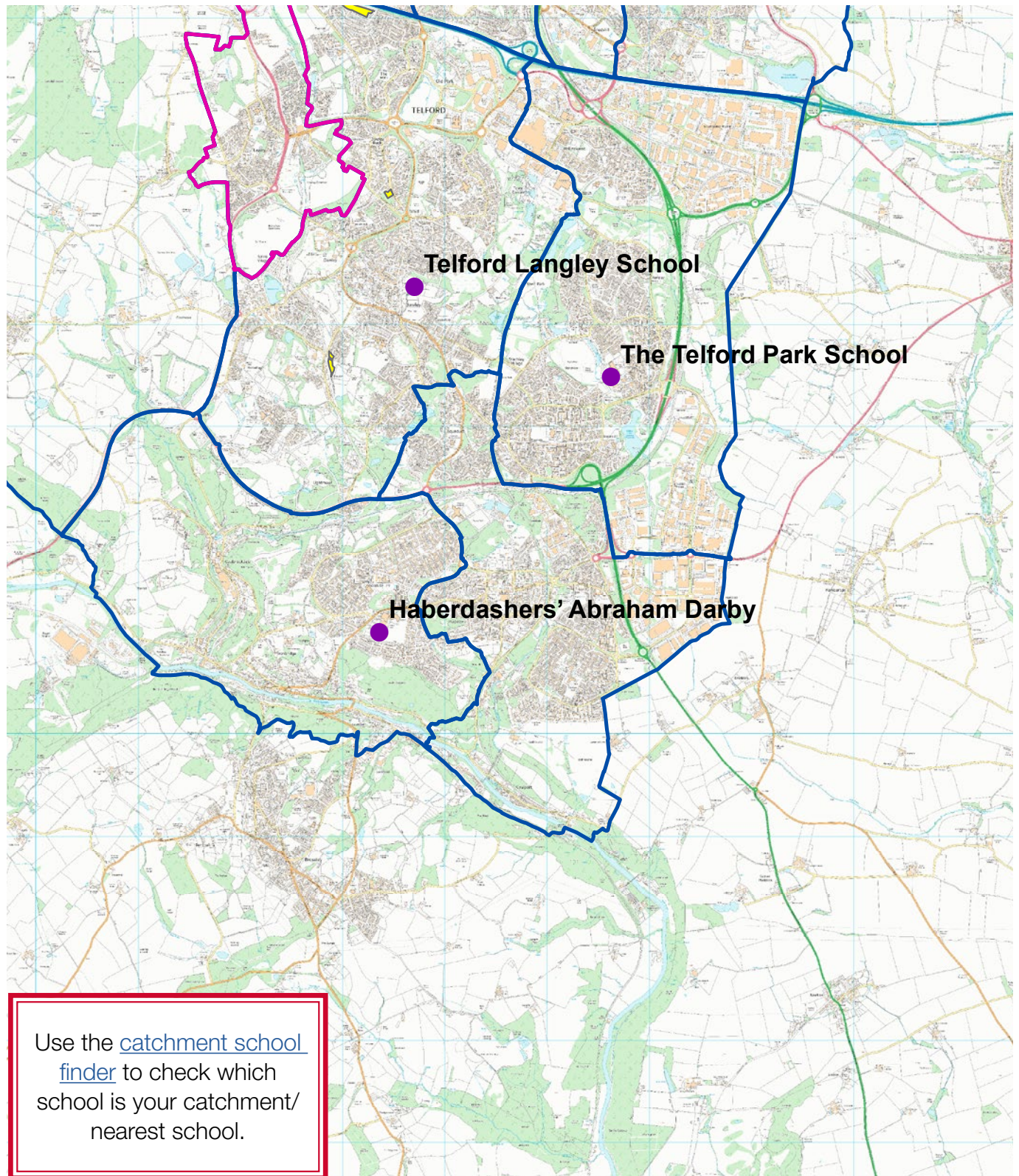
All Secondary Schools in Telford and Wrekin

● Secondary Schools

Reproduced from the Ordnance Survey mapping with the permission of the Controller of Her Majesty's Stationery Office © Crown copyright. Unauthorised reproduction infringes Crown copyright and may lead to prosecution or civil proceedings.

Borough of Telford & Wrekin. Licence No 100019694. Date. 2025

South Telford secondary school catchment area map



South Telford (Secondary)

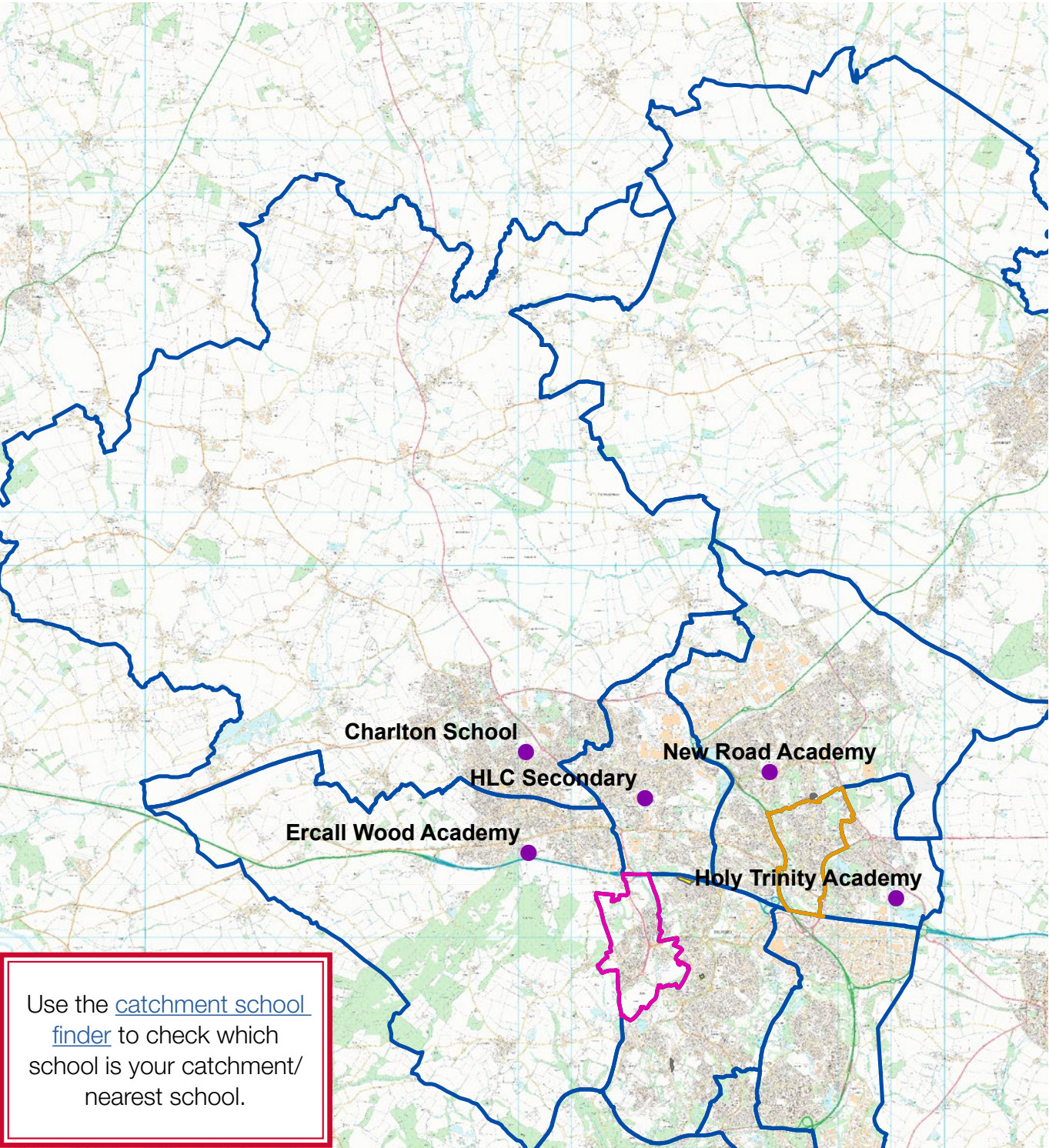
- Secondary Schools
- Catchment areas
- Telford Langley and Ercall Wood shared

Please note: Thomas Telford and Madeley do not appear on the map as they do not have a catchment area within Telford and Wrekin.

Reproduced from the Ordnance Survey mapping with the permission of the Controller of Her Majesty's Stationery Office © Crown copyright. Unauthorised reproduction infringes Crown copyright and may lead to prosecution or civil proceedings.

Borough of Telford & Wrekin. Licence No 100019694. Date. 2025

North Telford secondary school catchment area map



North Telford (Secondary)

Secondary Schools

Catchment areas

New Road and Holy Trinity shared

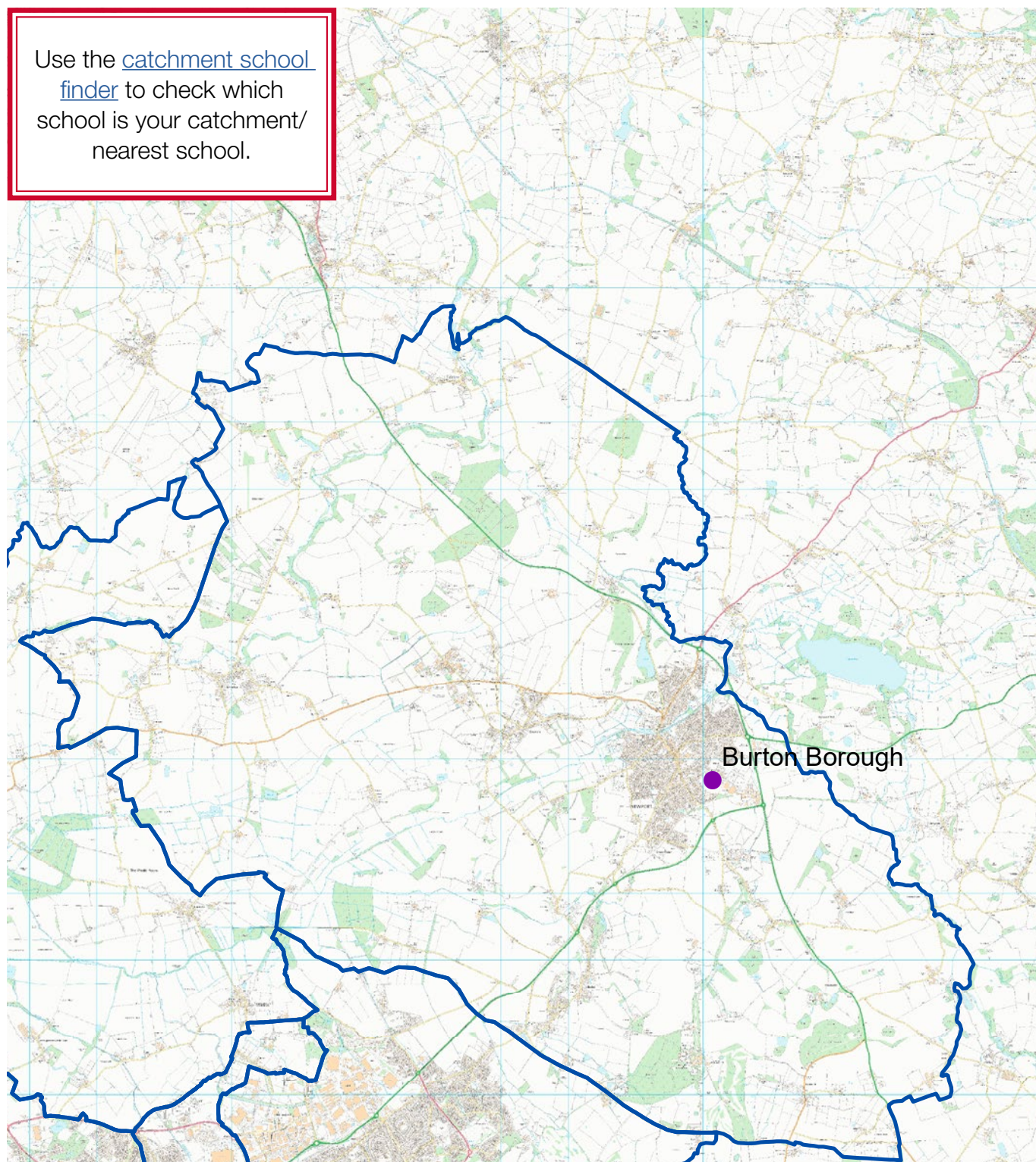
Telford Langley and Ercall Wood shared

Reproduced from the Ordnance Survey mapping with the permission of the Controller of Her Majesty's Stationery Office © Crown copyright. Unauthorised reproduction infringes Crown copyright and may lead to prosecution or civil proceedings.


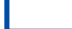
Borough of Telford & Wrekin. Licence No 100019694. Date. 2025

Newport secondary school catchment area map

Use the [catchment school finder](#) to check which school is your catchment/nearest school.



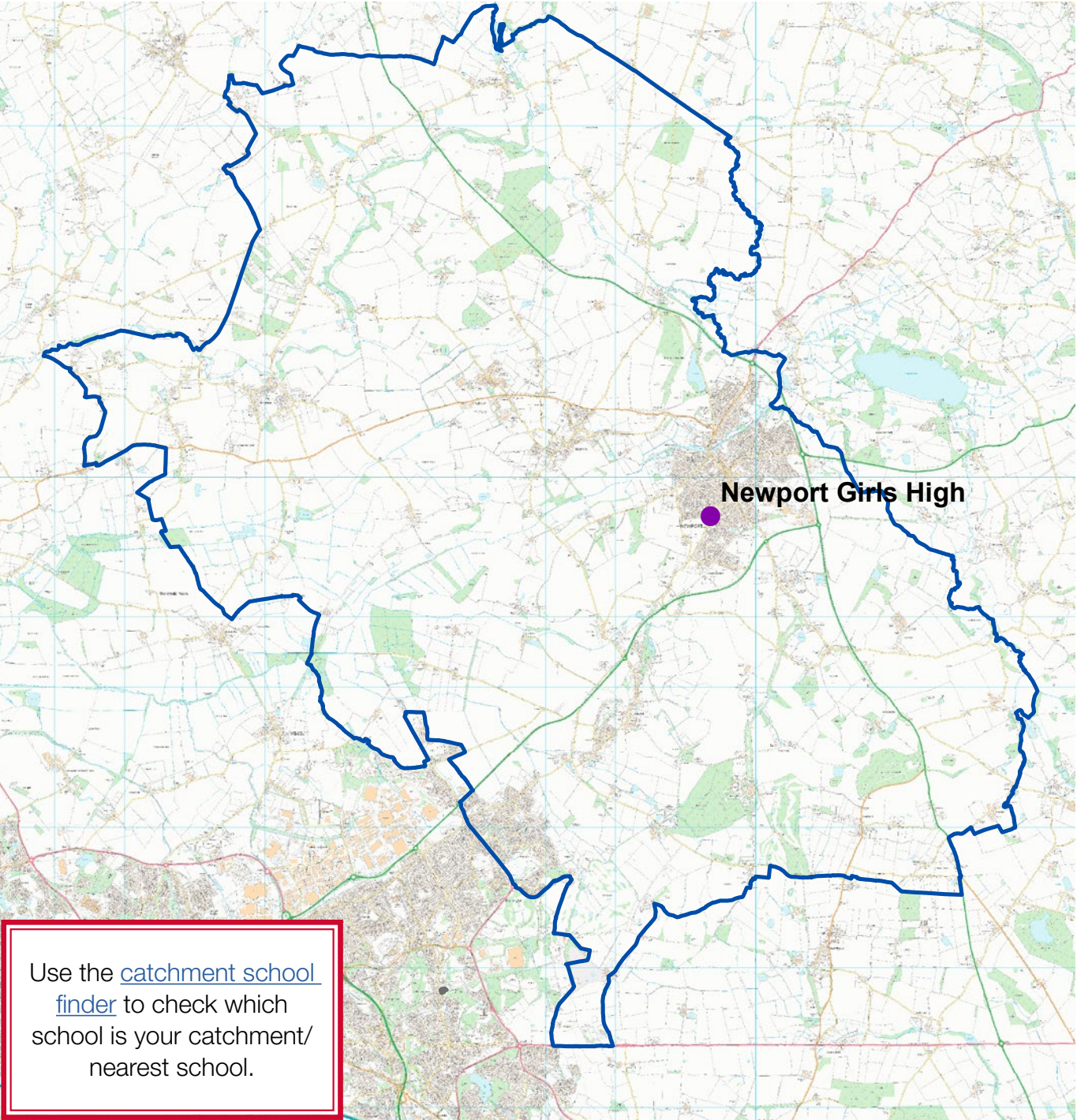
Newport (Secondary)

-  Burton Borough
-  Catchment Area

Reproduced from the Ordnance Survey mapping with the permission of the Controller of Her Majesty's Stationery Office © Crown copyright. Unauthorised reproduction infringes Crown copyright and may lead to prosecution or civil proceedings.

Borough of Telford & Wrekin. Licence No 100019694. Date. 2025

Grammar schools catchment area map



Use the [catchment school finder](#) to check which school is your catchment/nearest school.

Grammar school catchment area

Newport Girls High

Grammar Catchment Area

Please note: Adams Grammar is not displayed on this map as it does not have a catchment area within Telford and Wrekin

Reproduced from the Ordnance Survey mapping with the permission of the Controller of Her Majesty's Stationery Office © Crown copyright. Unauthorised reproduction infringes Crown copyright and may lead to prosecution or civil proceedings.

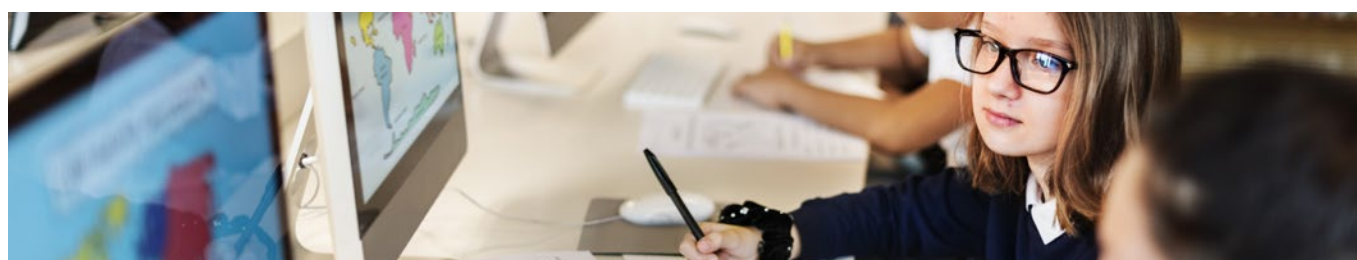
Borough of Telford & Wrekin. Licence No 100019694. Date. 2025

5

School information

Secondary school details

School name and address	Contact details	Age range	Published admission number (PAN)	Admission arrangements
Charlton School (Academy) Apley Avenue, Wellington, Telford TF1 3FA	www.charlton.uk.com 01952 951409	11-16	240	Click here
Ercall Wood Academy (Academy) Golf Links Lane, Wellington, Telford TF1 2DT	www.ercallwood.co.uk 01952 951410	11-16	240	Click here
Haberdashers' Abraham Darby (Academy) Ironbridge Road, Madeley, Telford TF7 5HX	www.haberdashersabrahamdarby.co.uk 01952 386800	11-18	180	Click here
Haberdashers' Adams Grammar School (Academy) High Street, Newport TF10 7BD	www.adamsgs.uk 01952 953810	11-18	135	Click here
Hadley Learning Community – Secondary Phase (Academy) Waterloo Road, Hadley, Telford TF1 5NU	www.hadleylearningcommunity.org.uk/secondary 01952 951411	11-16	240	Click here



5

School information

School name and address	Contact details	Age range	Published admission number (PAN)	Admission arrangements
Holy Trinity Academy (Voluntary Aided School) Teece Dr, Priorslee, Telford TF2 9SF	www.holytrinity.academy 01952 386100	11-18	210	Click here
Madeley Academy (Academy) Castlefields Way, Madeley, Telford TF7 5FB	www.madeleyacademy.com 01952 527700	11-18	180	Click here
New Road Academy (Academy) New Road, Wrockwardine Wood, Telford TF2 7AB	https://newroad.lct.education 01952 951412	11-16	240	Click here
Newport Girls' High School Academy (Academy) Wellington Rd, Newport TF10 7HL	www.nghs.org.uk 01952 797550	11-18	120	Click here
The Burton Borough School (Academy) Audley Avenue, Newport TF10 7DS	www.burtonborough.org.uk 01952 951408	11-16	242	Click here
The Telford Langley School (Academy) Duce Drive, Dawley, Telford TF4 3JS	www.telfordlangleyschool.co.uk 01952 386700	11-16	240	Click here
The Telford Park School (Academy) Grange Avenue, Stirchley, Telford TF3 1FA	www.telfordparkschool.co.uk 01952 387400	11-16	180	Click here

School attendance

By law, (Section 444 of the Education Act 1996) all children between 5 and 16 must receive appropriate full-time education. To achieve this your child must:

- Attend school regularly
- Arrive at school on time
- Abide by school rules and attend all lessons

Your school will monitor your child's attendance because regular attendance will:

- Give your child the best possible start in life
- Enable your child to keep up with schoolwork
- Prove to employers that your child is reliable and support him/her in getting a good job
- Reduce the risk of your child becoming a victim of crime or abuse
- Reduce the opportunity for your child becoming involved in anti-social or criminal behaviour

An attendance of 90% for a Year 6 pupil may sound good but means that your child has missed four whole weeks of the Year 6 curriculum.

If this continued throughout secondary school an entire half a year of secondary schooling would be missed! 90% is not a good attendance. Any pupil nationally who has an attendance level of 90% or below is deemed a persistent absentee by the Department for Education.

Parents can help improve attendance by remembering that children should not be kept away from school for reasons such as:

- Looking after others at home
- Waiting at home for a delivery/tradesman
- Visiting relatives
- Taking long weekends
- Shopping trips
- Birthday treats

Each school has a Nominated Attendance Officer attached who will be happy to help with any problems parents

experience regarding school attendance.

Leave in term time (holidays)

There is no automatic entitlement for pupils to take leave during term time.

The Local Authority policy, in line with the School Attendance (Pupil Registration) (England)

Regulations 2024 is that no request for absence during term time should be authorised unless it is deemed by the headteacher to be in exceptional circumstances.

All requests for leave must be made in writing and in advance, before any holiday is booked. The Headteacher will review all requests and notify parents of their decision. If permission is not granted, the absence will be recorded as unauthorised, and parents may be issued with a Penalty Notice (PN) fine.

Penalty Notice Charges

- First PN within three years: £80 (if paid within 21 days)
- Second PN within three years £160 (flat rate)

6

Additional information

- Third offence within three years: No further PN will be issued. Instead, alternative legal action may be taken, which could include prosecution.

If the parent does not pay the Penalty Notice within the specified time, they may be prosecuted in the Magistrates Court. Any queries regarding Penalty Notices should be made to the Attendance Support Team.

School travel assistance

A secondary school age child will be eligible for travel assistance if:

- They attend their nearest or catchment area school; and
- Live more than three miles from the school.

A secondary school age child will also be eligible for extended rights if they live in a household with an income below £7,400 (and meet the eligibility relating to the distance between their home and school) and:

- They attend one of the three nearest schools which is between two and six miles from your home and there are fewer than three suitable schools nearer to your home; or
- They attend a school that is between two and 15 miles from your home, you have chosen the school on the grounds of your religion or belief and there is no nearer suitable school to their home.

The suitability of the walking route to school will also be taken into consideration.

Travel assistance will also be provided for children with special educational needs, disabilities and mobility problems who cannot reasonably be expected to walk to school, even if accompanied by a parent/ carer.

Travel assistance may also be agreed in exceptional circumstances, such as for children living in emergency accommodation or residential care, children with disabled parents, or looked after children who have moved to a new placement, and it is in the

child's best interest to continue attending their nearest school.

Travel assistance for eligible secondary school age children in Telford and Wrekin is usually provided in the form of a free bus pass to allow them to travel independently to and from school. Other forms of travel assistance may be provided based on the child's needs or availability on existing vehicles.

For further information on school travel assistance and to apply, please visit travelassistance.telford.gov.uk or contact the Passenger Transport Team on 01952 384545 or emailing travelassistance@telford.gov.uk

Applications must be made by 30 June 2026 to ensure that travel arrangements for eligible children can be put in place for September 2026.

Free school meals

From the start of the 2026/27 school year all children from households in receipt of universal credit will be entitled to receive a free meal.

Visit www.gov.uk/apply-free-school-meals for further information.

6

Additional information

School uniform and clothing

The Local Authority does not provide any grants towards the cost of buying school uniforms or other clothing. However, schools may be able to provide information on what local support is available.

Telford Crisis Support may be able to offer support through their School Uniform Project. Further information is available at www.telfordcrisissupport.org.uk and you can contact them by emailing telfordcrisissupport.org.uk or calling 07878 296958..

Child employment and performance licensing for children of compulsory school age

Telford & Wrekin Council recognises that children may gain positive life experiences by being given the opportunity to work part-time, and/or appear in local or national stage productions, films and television adverts, an opportunity granted to many children in the Borough.

The Council's Attendance Support Team includes a Child Employment Officer who has a statutory duty to regulate, supervise and

enforce legislation with respect to all aspects of the employment of children and performance licensing.

It is a requirement of the Employment of Children Regulations that all children of compulsory school age up to, and including the minimum school leaving age, must have a licence or permit issued by the LA when employed part-time outside school hours.

The employer and parent of each child who works part-time, must complete a work permit application form which is submitted to the Child Employment Officer for approval and issuing of the licence. The officer provides advice to schools, parents, employers and children on the suitability and types of jobs permitted and ensures all work environments are safe and appropriate.

A child may not begin employment until they are 13 years old and may work two hours per school day to a maximum of 12 hours per school week. The number of hours increases during holidays.



6

Additional information



The Child Employment Officer is also responsible for the issuing of performance licenses. These licences are granted to production companies, modelling agencies and amateur dramatic societies following a detailed application process in partnership with the parent and school.

The Child Employment Officer is based at Darby House and can be contacted for further information on 01952 385223.

Email: child.employment@telford.gov.uk

Information is also available on our website [Child in Employment - Telford & Wrekin Council](#)

School governors

Every school has a governing School Admissions Team body made up of local community members, including parents of children at the school. Governors play a vital role, contributing to the leadership and strategic direction of the school.

The governing body acts as a corporate entity, responsible for setting the school's ethos and strategic framework. This includes determining the school's aims and overseeing its overall conduct. While the headteacher and staff manage the day to day operations they are accountable to the governing body for the school's performance and progress.

If you would like to learn more about the work of the governing body, or are interested in becoming a school governor, please contact the school directly for further information or seek advice from the Local Authority's School Governance Team on (01952) 380808.

Youth offer

In Telford and Wrekin, we are dedicated to enhancing and expanding the local youth offer, providing a wide range of activities and services that support young people's health and wellbeing, education, employment and training, arts, culture, and active participation.

To drive this forward, we've established the Telford and

6

Additional information

Wrekin Youth Partnership, a collaborative group committed to shaping and delivering the youth offer. Together, we aim to ensure that every child and young person receives the right support and opportunities, at the right time and in the right place.

The Youth Partnership is also focused on making youth provision inclusive and accessible to all, while placing young people's voices at the heart of decision-making and development.

Find out more via the youth offer website <https://youthoffer.telford.gov.uk/>

Useful contacts

Telford and Wrekin

School Admissions Team

Darby House, Lawn Central,
Telford, TF3 4JA

Email: admissions@telford.gov.uk

SEND TeamEmail: sendandinclusion@telford.gov.uk

Shropshire

School Admissions Team
The Guildhall,
Frankwell Quay,
Shrewsbury
SY3 9HQ

Email: school-admissions@shropshire.gov.uk

Staffordshire

School Admissions Team and
Transport Service

Staffordshire County Council,
2 Staffordshire Place, Stafford
ST16 2DH

Email: admissions@staffordshire.gov.uk

Wolverhampton

School Admissions and
Appeals Team

City of Wolverhampton
Council, Civic Centre,
St Peter's Square,
Wolverhampton WV1 1RL

Email: schooladmissions@wolverhampton.gov.uk



