



Telford & Wrekin Council Local Plan
Local Plan Policies Map Addendum
(for Schedule of Proposed Main Modification document L1)

July 2017

EiP reference: L3

The Inspector cannot recommend changes to the Policies Map, as this does not form a Development Plan Document. The Proposed Main Modifications (MMs) describe changes that, as a consequence, necessitate amendments to the Policies Map. The Council has produced a schedule of the maps below to illustrate the proposed changes arising from the Schedule of Proposed Main Modifications (document L1). The maps are intended to assist anyone wishing to make comments on the Inspector's Schedule of Proposed Main Modifications.

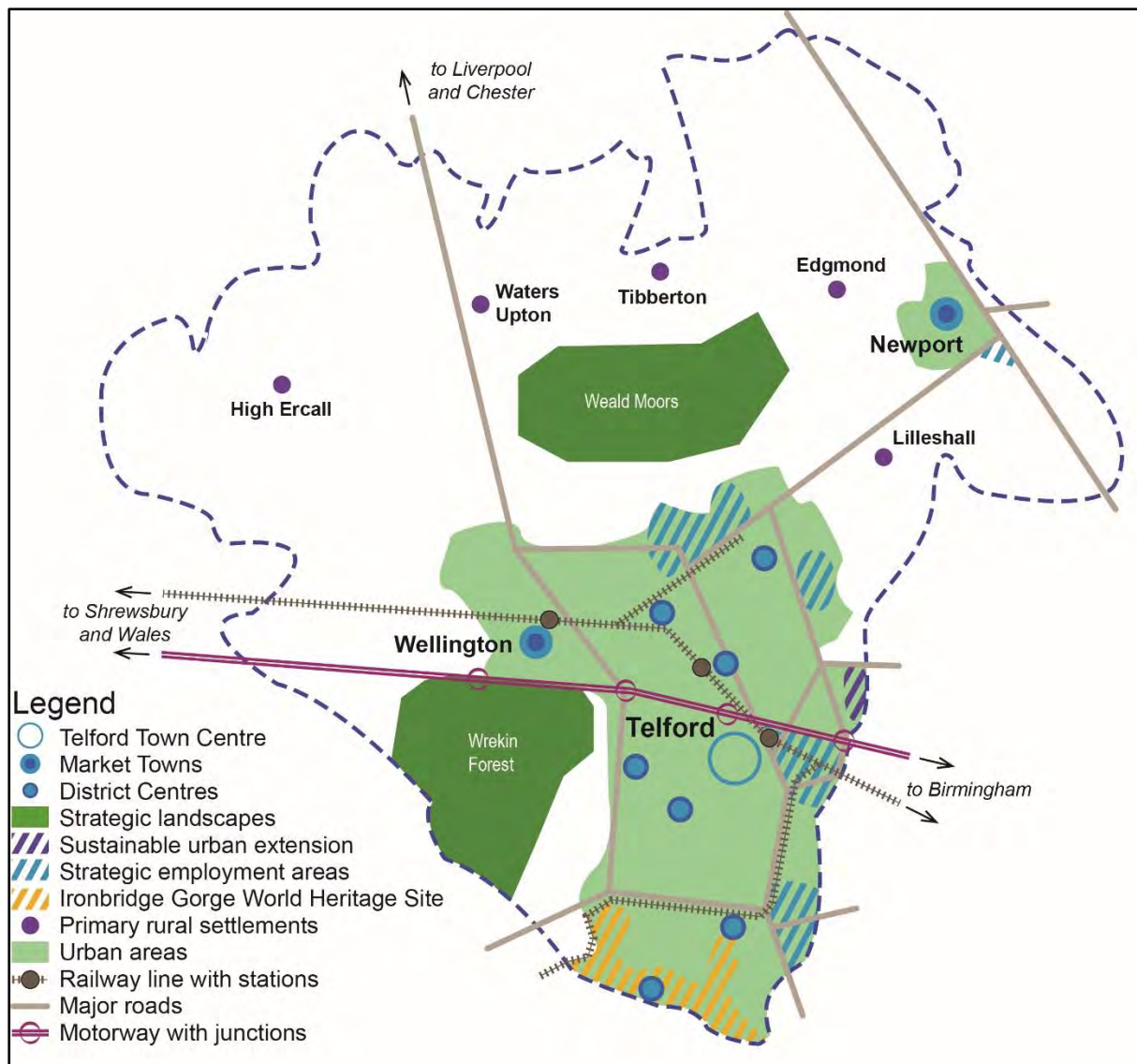
The Council is not seeking comment on these amendments to the Policies Map

Related Proposed Main Modification	Map Number	Changes made
---	------------	--------------

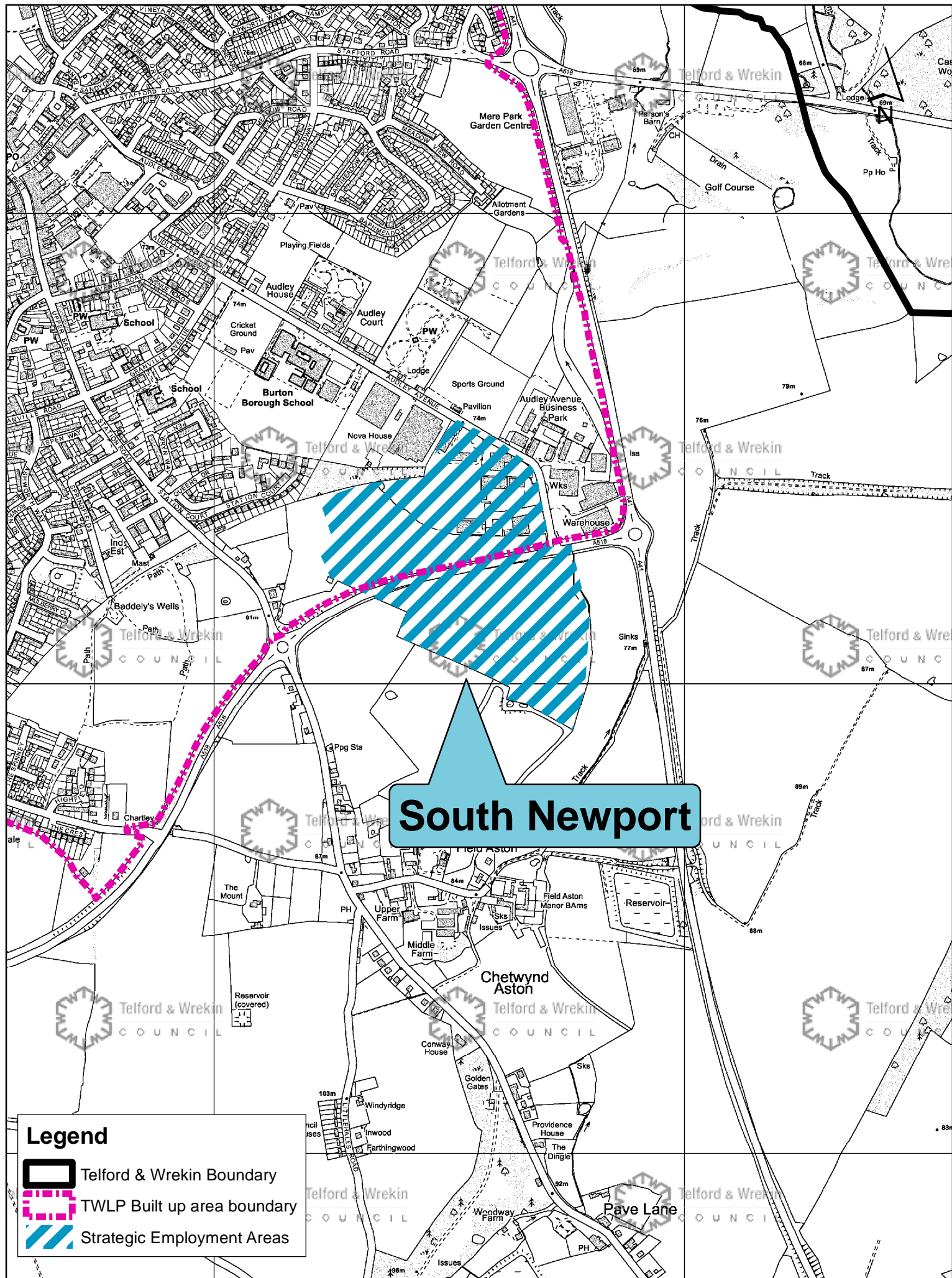
MM7		Update Figure 5 Key Diagram to reflect the following modifications: <ul style="list-style-type: none"> • Deletion of Lilleshall Village Strategic Landscape (MM62) • Deletion of H1 Sustainable Urban Extension (MM39)
MM18		Make changes to Map 2 of the Local Plan to amend the boundaries of South Newport Strategic Employment Area to exclude land east of Audley Avenue
MM18		Make changes to Local Plan Policies Map to amend the boundaries of South Newport Strategic

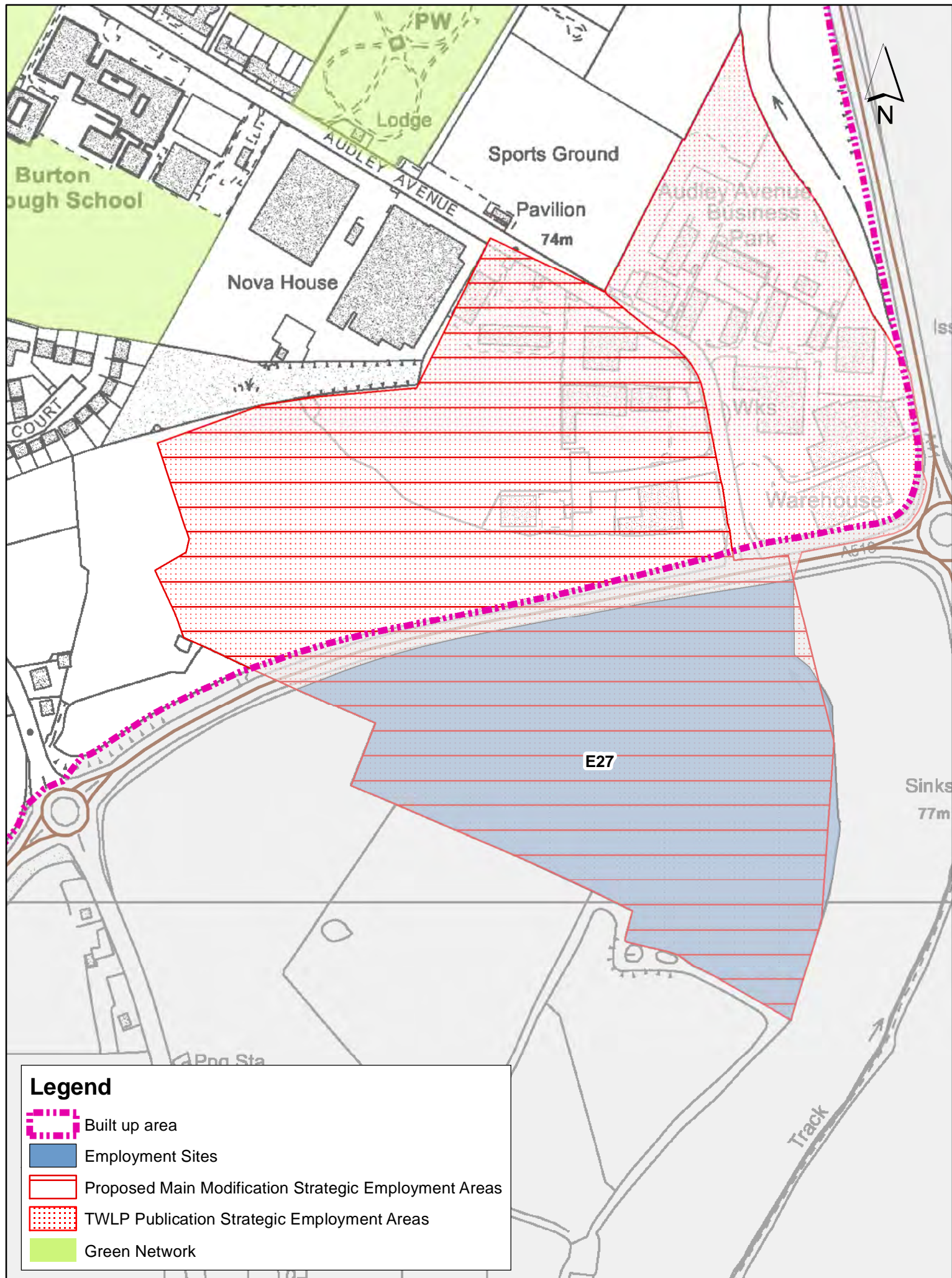
Related Proposed Main Modification	Map Number	Changes made
---	------------	--------------

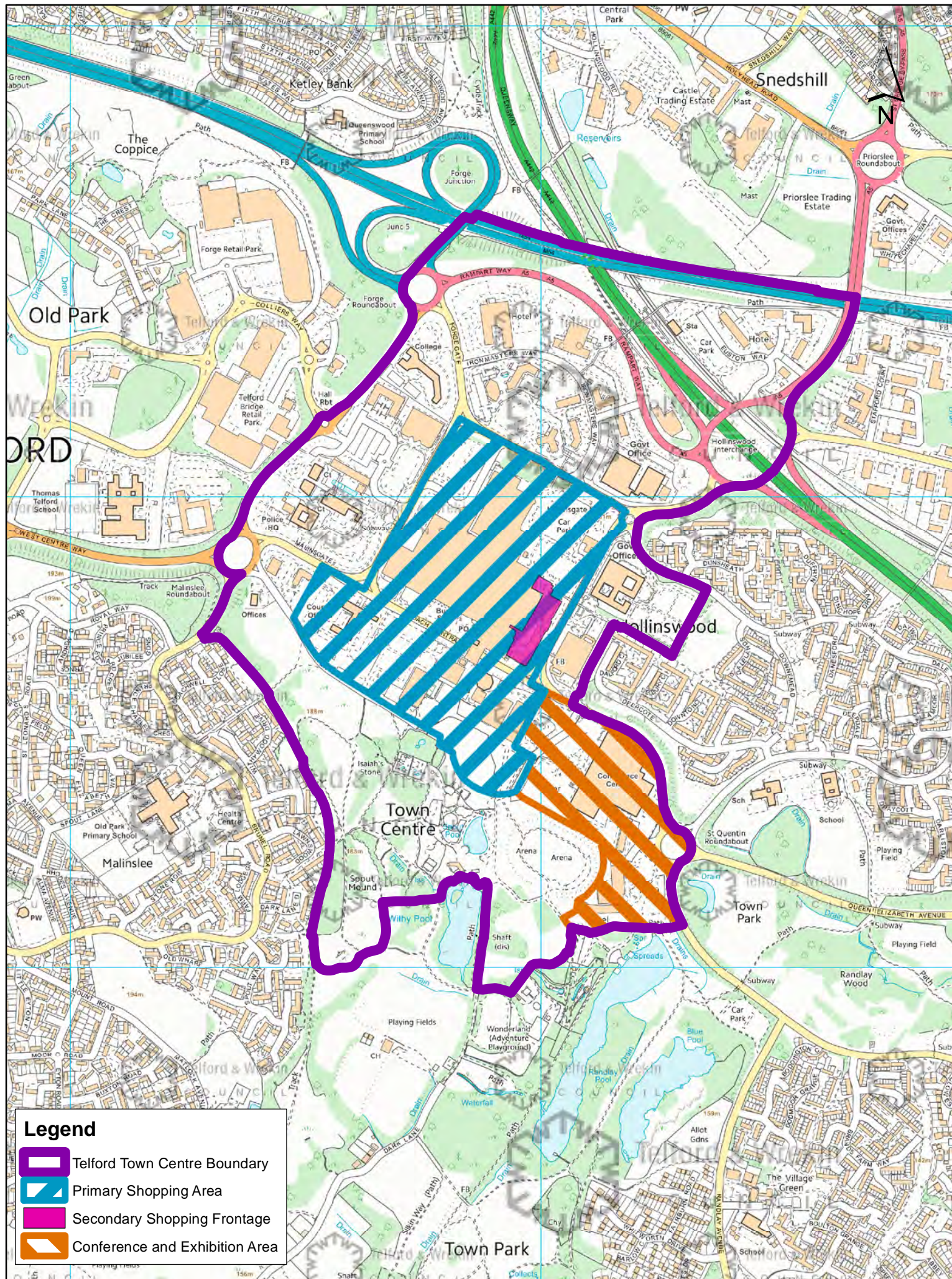
		Employment Area to exclude land east of Audley Avenue
MM27		Modify Map 3 of the Local Plan to include secondary shopping frontage.
MM27		Modify Local Plan Policies Map to include secondary shopping frontage.
MM34		Amend Local Plan Policies Map to show the Shrewsbury and Newport canal route
MM39 & MM92		Amend the Local Policies Map to reflect the deletion of the following housing allocation sites: <ul style="list-style-type: none"> • H1 • H7 • H8 • H13
MM62		Amend the Local Plan Policies Map Strategic Landscapes to show the following change: <ul style="list-style-type: none"> • Deletion of Lilleshall Village Strategic Landscape
MM75		Amend the Local Plan Policies Map to modify Mineral Safeguarding Areas in relation to BGS data and to apply BGS buffer zones in the rural area.

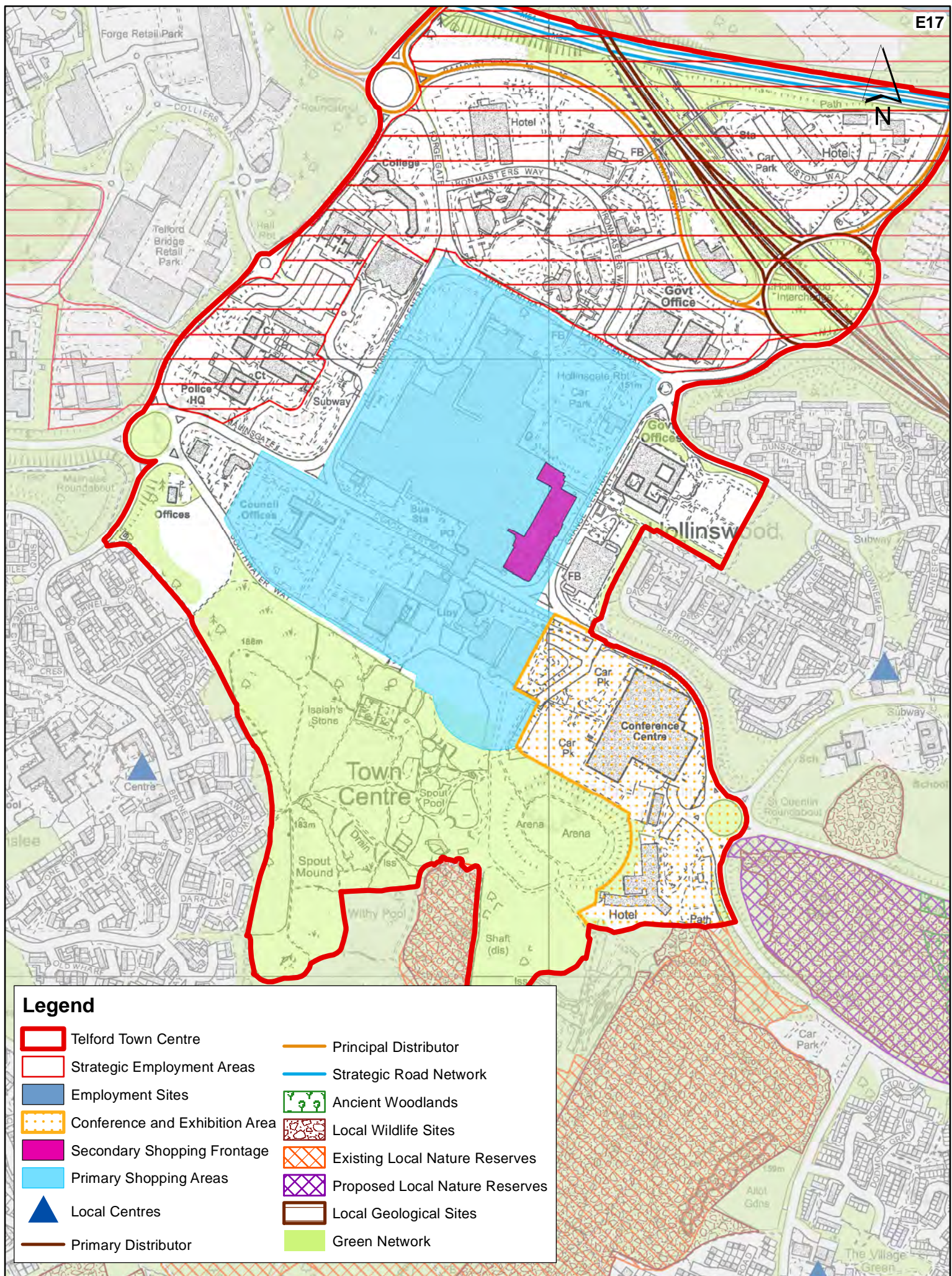


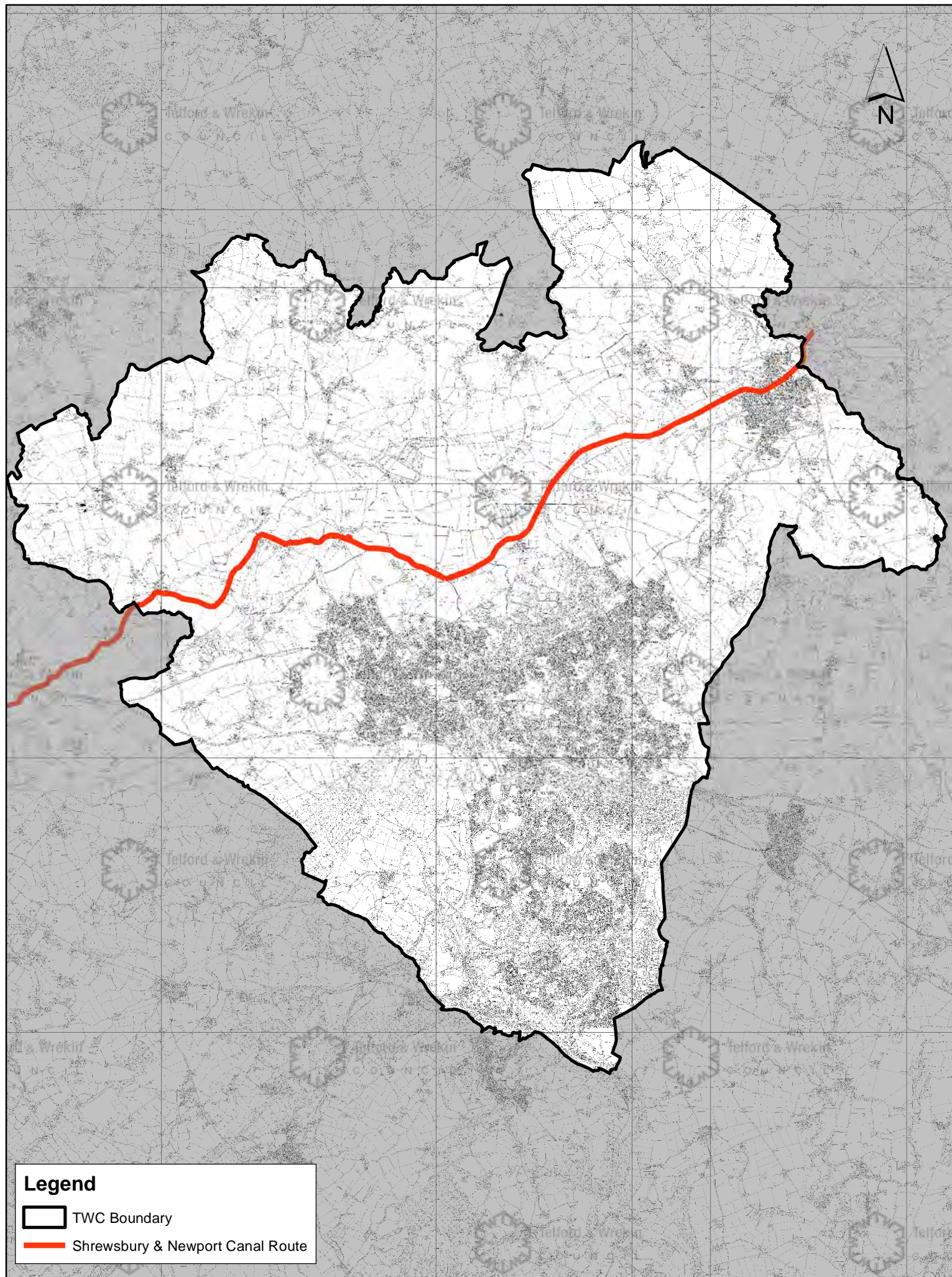
Map 1 - MM7: Update of Figure 5 Key Diagram to reflect Proposed Main Modifications

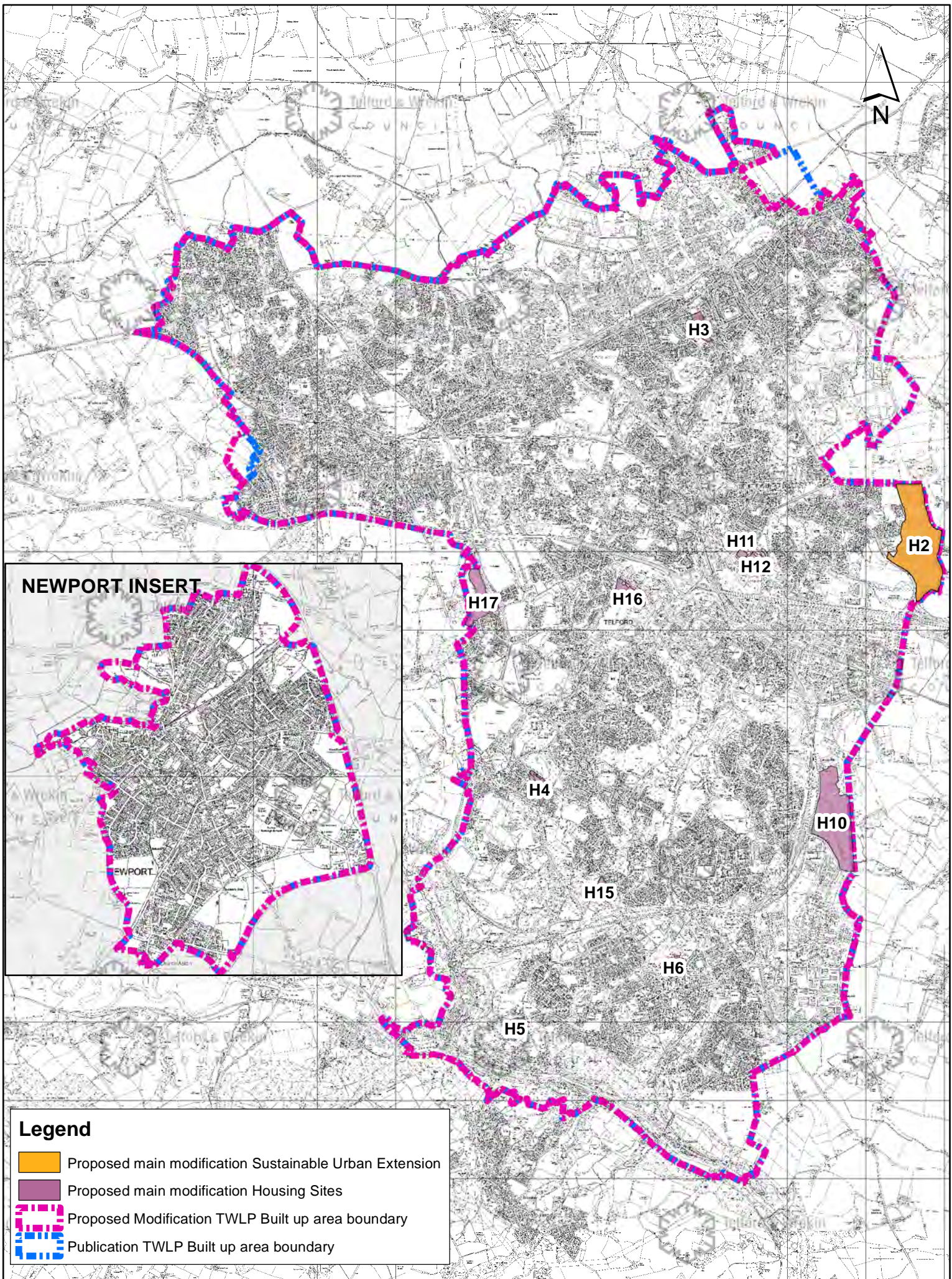


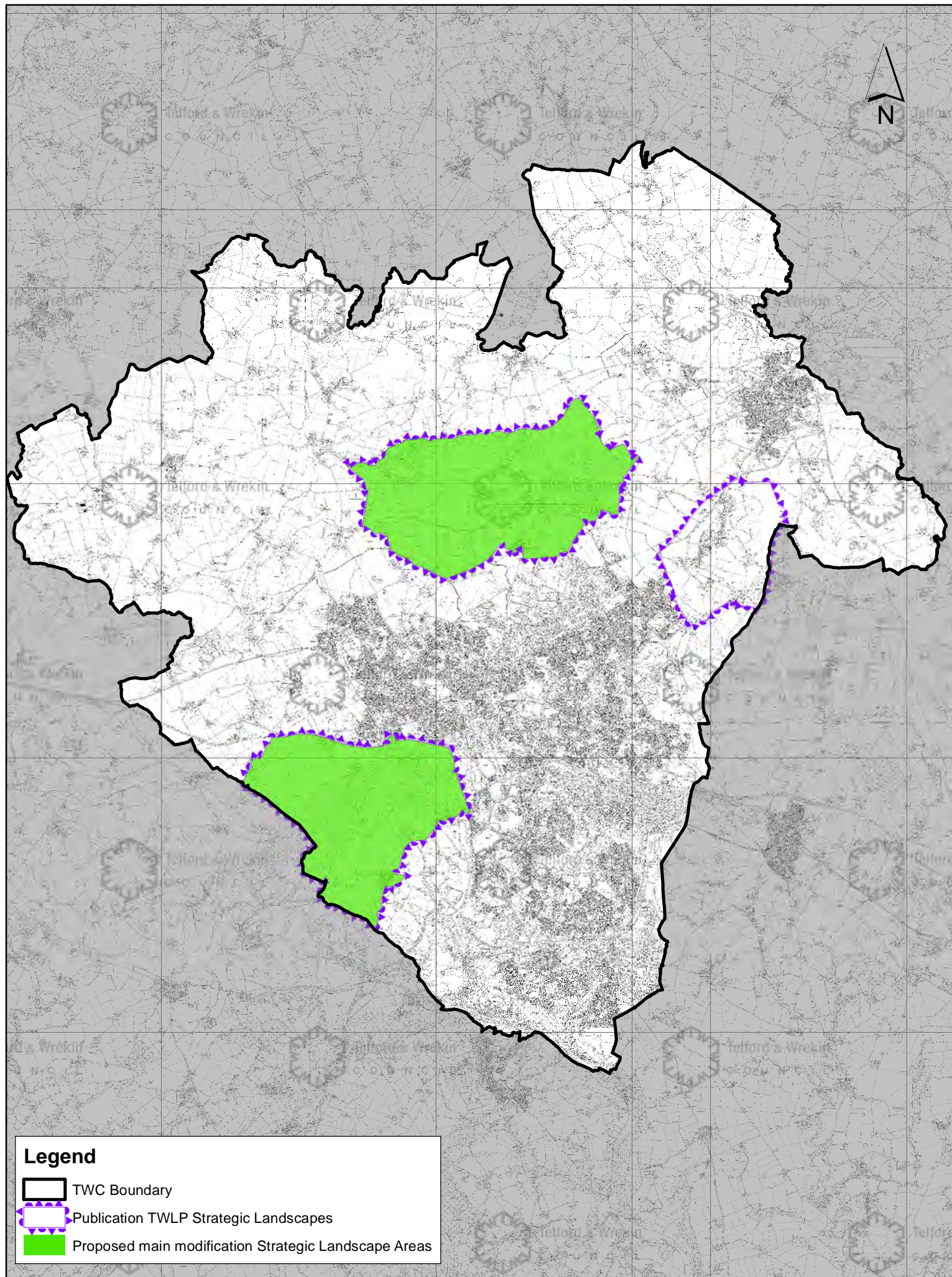















Legend

-  TWC Boundary
-  Publication TWLP Strategic Landscapes
-  Proposed main modification Strategic Landscape Areas

