

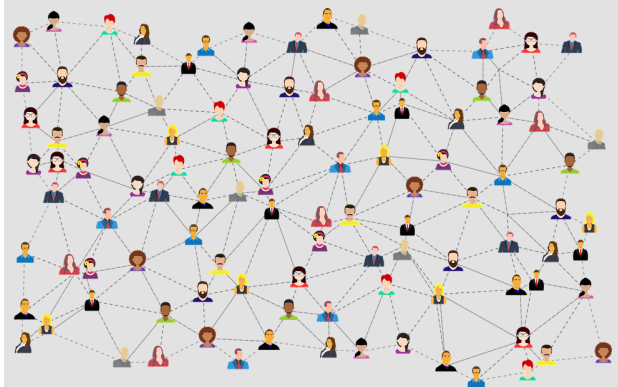
Strategic Education Partnership Board Newsletter

Issue 2: March 2022

Welcome to our Strategic Education Partnership Board newsletter

We will produce a newsletter after each full Partnership Board meeting (termly) to keep you up to date with the latest news and information.

The newsletter will also keep you informed on how the Board and the working group are progressing in the delivery of our overarching vision and priorities.



Updates from the Board meeting held on 3 March

Recruitment of an Independent Chair

We continue to seek an Independent Chair for the Board to hold all partners, including the LA to account for actions discussed. It was agreed that the ideal chair would be locally-based, with experience and an understanding of our place, to support the Partnership in delivering ambitions forward.



Developing an overarching Education and Skills Strategy

Key priorities have been agreed as the basis for a Education and Skills strategy and include:

- ⇒ Best Start
- ⇒ Engaging Curriculum
- ⇒ Local Post-16 Education
- ⇒ New Skills and Pathways to Fulfilling Life and Work
- ⇒ Diverse and Inclusive Learning

The strategy must reflect our local place and encompass the whole educational journey of the child. The Board will next consider further detail that sits behind our priorities and wider consultation will be sought before publication.



If you have any questions or feedback relating to the Education Strategic Partnership Board please email hubprojectteam@telford.gov.uk or call 01952 385658.

Strategic Education Partnership Board Newsletter

Edition: March 2022

Developing a Local Area Education Dashboard

The development of a data dashboard is beginning to take shape in order to benchmark delivery against our Education Strategic Partnership Board vision. Board members were provided with early demonstrations of the dashboard (still in development) who fed back enthusiastically about its potential possibilities. Further refining of the local area dashboard will continue, and will be viewed as an on-going project. It's continuing development provides many opportunities to both the Board and for individual schools, particularly once more up to date data can be integrated.

Provided below are some examples of the dashboard that were reviewed by the Board.

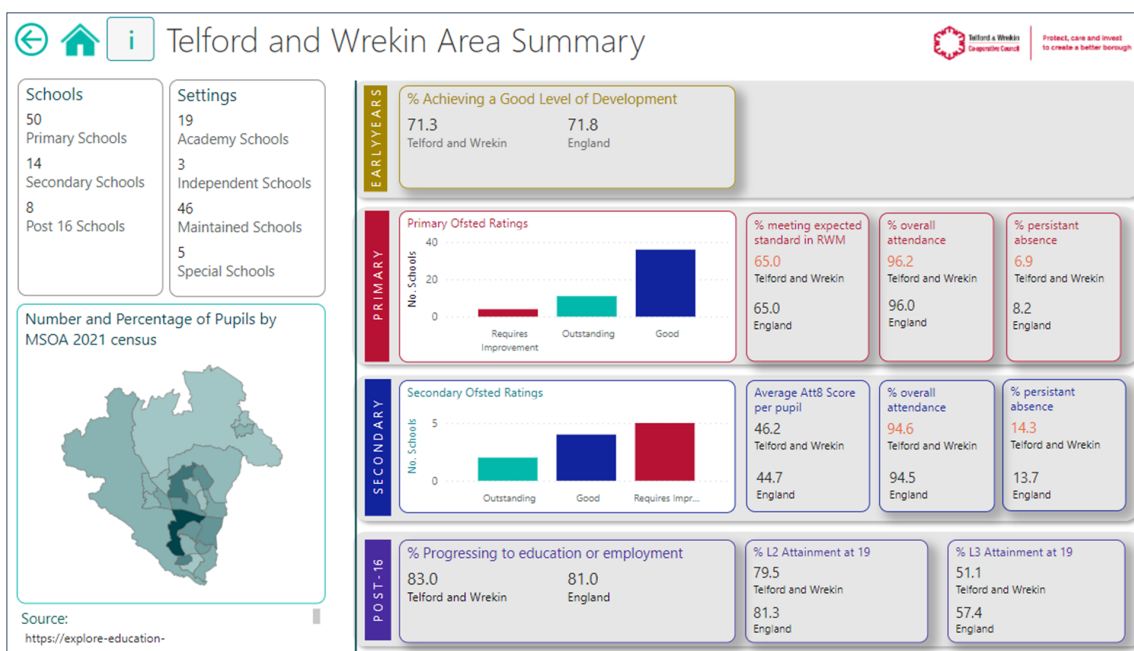


Fig 1. Telford and Wrekin Area Summary: An Overview of the boroughs schools, settings and distribution of pupils. Key indicators include performance across the phases of education, including a comparison between borough and national averages.

When reviewing the data, consideration is needed with regard to the when information was published as it will reflect a point in time. It is not 'live'. It was agreed that data would need to be shared sensitively understanding that a context exists when interpretation is completed.

Currently the dashboard only contains published data from the DfE. The ambition will be to include up to date local level data to get a rich picture. Information will be used by the board to target borough wide issues.

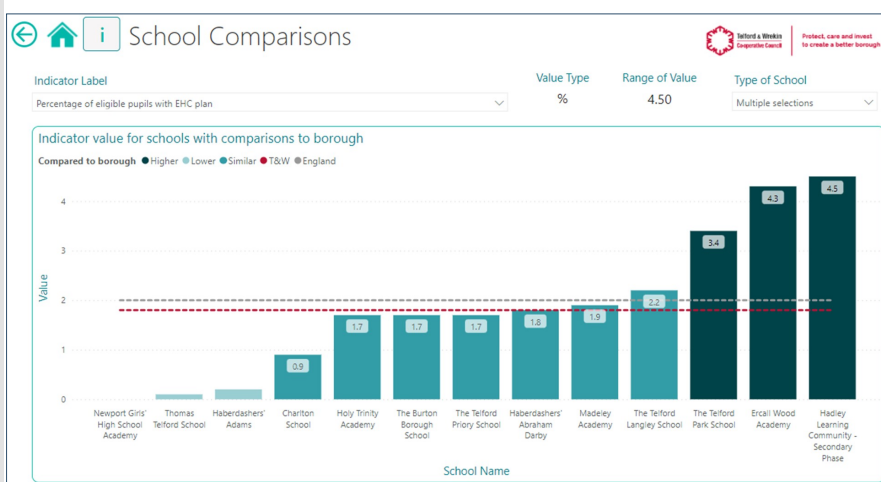


Fig 2. School Comparisons: Users can compare schools against various KPIs. As an example the board were shown the spread of children with EHC plans across our secondary schools and noted the skew towards particular settings.

Where possible, benchmarking is also shown. Here you can see the borough average (red dotted line) and the national (grey dotted line).

Strategic Education Partnership Board Newsletter

Edition: March 2022

Developing a Local Area Dashboard—Continued:

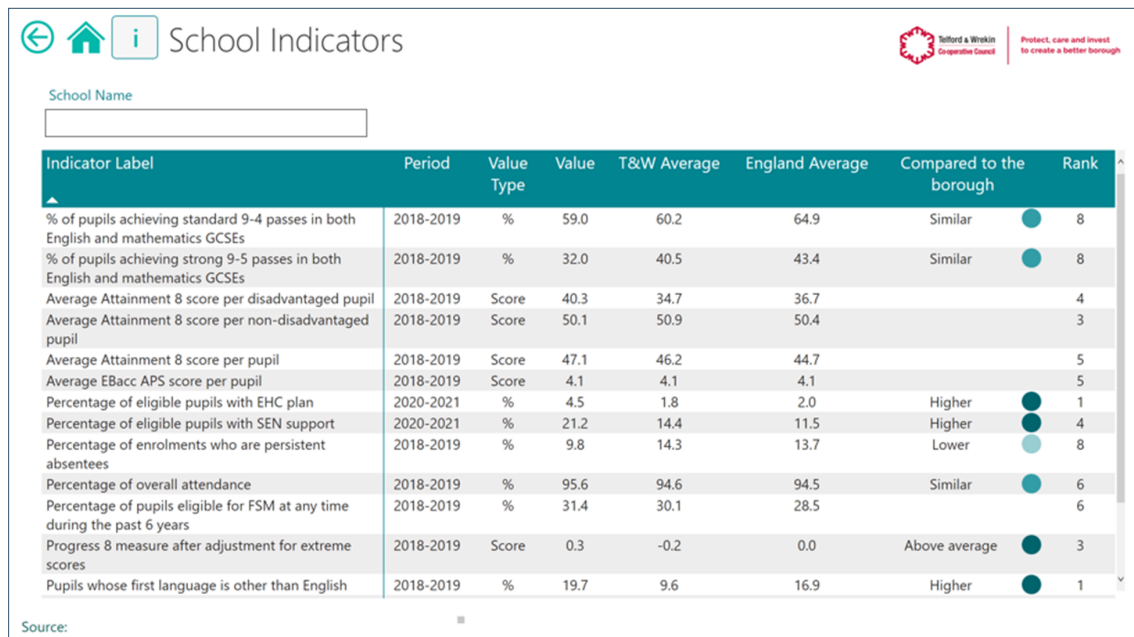


Fig 3. School Indicators: Here school level data can be ascertained and this dashboard allows the user to compare where they are in comparison to borough and national averages. The ranking shows the position of the school relative to all other schools in the borough of the same phase. This example relates to secondary but we can perform the same function for primary schools. The secondary school name has been taken off of this chart but would usually appear in the top left corner. We are considering how to share this with schools for their own information.

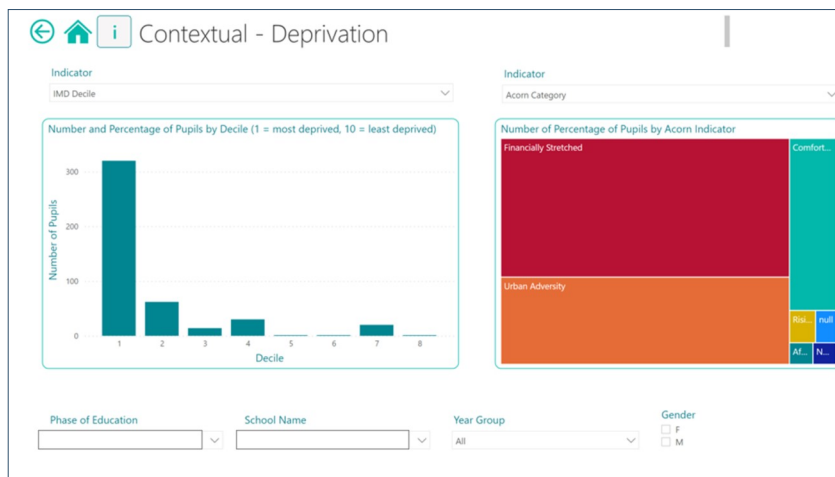


Fig 4. Contextual—Deprivation: An area of the dashboard also includes information about the level of affluence v deprivation regarding a school. The user can select a particular school and understand the deprivation level of the pupils local area. As part of the development of the dashboard we will start to use this information to correlate with other indicators. For example there is a high correlation between SEND and level of deprivation and the dashboard will help us support those that are outliers. (The school name has been removed for confidentiality).

WE are working to further the information held in the local area dashboard about Early Years and Post 16 settings. Watch this space!



!!NEW!!

Strategic Education Partnership Board has a Webpage and it is now Live!

The webpage will store all of our information in one accessible place so that our key stakeholders and partners (you!) can keep up to date with our developments.

Visit it now at <https://www.telford.gov.uk/TESPB>

Strategic Education Partnership Board Newsletter

Edition: March 2022

Who are the Linked Representatives?

Cluster Lead (Central Cluster)	Jane Siddons
Cluster Lead (Newport Cluster)	Christobel Cousins
Cluster Lead (North Cluster)	Claire Whiting
Cluster Lead (South Cluster)	Stephanie Dowley
Cluster Lead (Wellington Cluster)	Mark Davis
Community Academies Trust (CAT)	Philip Hamilton
Early Years	Theresa Ewin
The Haberdashers' Adams' Federation Trust (HAFT)	Lee Hadley
Learning Community Trust (LCT)	Gill Eatough
LA Maintained Schools	Angus Neal
Newport Girls' High School	Michael Scott
Severn Teaching School Alliance	Heather Davis
Severn Teaching School Alliance	Sally Noble
Shrewsbury Diocese	Damian Cunningham
Shrewsbury Diocese	Carol Morgan
Special Schools	Abi Martin
Telford College	Graham Guest
Telford & Wrekin Council	Simon Wellman
Telford & Wrekin Council	Jo Britton
Thomas Telford School and Madeley Academy	Sir Kevin Satchwell

If you have any questions or feedback relating to the Education Strategic Partnership Board please contact your representative or email hubprojectteam@telford.gov.uk or call 01952 385658.