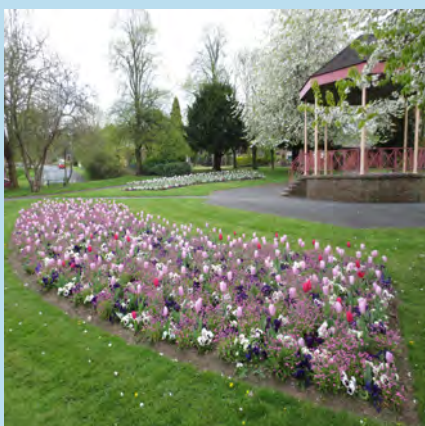


Annual Monitoring Report 2015



1	Introduction	3
2	Housing	5
2.1	Completions	5
2.2	Strategic Site Update	7
3	Economic Development	8
3.1	Employment	8
3.2	Employment Land	9
3.3	Retail and Town Centres	10
4	Travel and Accessibility	12
5	Water and Flood Risk	14
6	Biodiversity	15
7	Green Spaces	19
8	Waste and Minerals	21
8.1	Waste	21
8.2	Minerals	21
9	Heritage	23
10	Renewable Energy and Climate Change	24
11	Development Plan Documents	25
11.1	Local Development Scheme Milestones	25
12	Duty to cooperate	26
13	Core Strategy	27
14	Central Telford Area Action Plan	29
15	Infrastructure Delivery Planning and Community Infrastructure Levy	30
16	Neighbourhood Planning	31
17	Appendix	32

1 Introduction

1.0.1 The Annual Monitoring Report shows the performance of planning policy within the Borough over the last year and if necessary recommends changes. The data used for the report comes from the financial year of 1st April 2014 - 31st March 2015 unless otherwise noted.

1.0.2 Where possible, this report sets out the data as the urban areas of Telford, Newport and rural area, as defined on Map of the Borough.

1.0.3 Local planning authorities are required to make their Authority's Monitoring Report publicly available under Regulation 34 of the Town and Country Planning (Local Planning) (England) Regulations 2012. Telford & Wrekin Council is committed to publishing its development monitoring report annually.

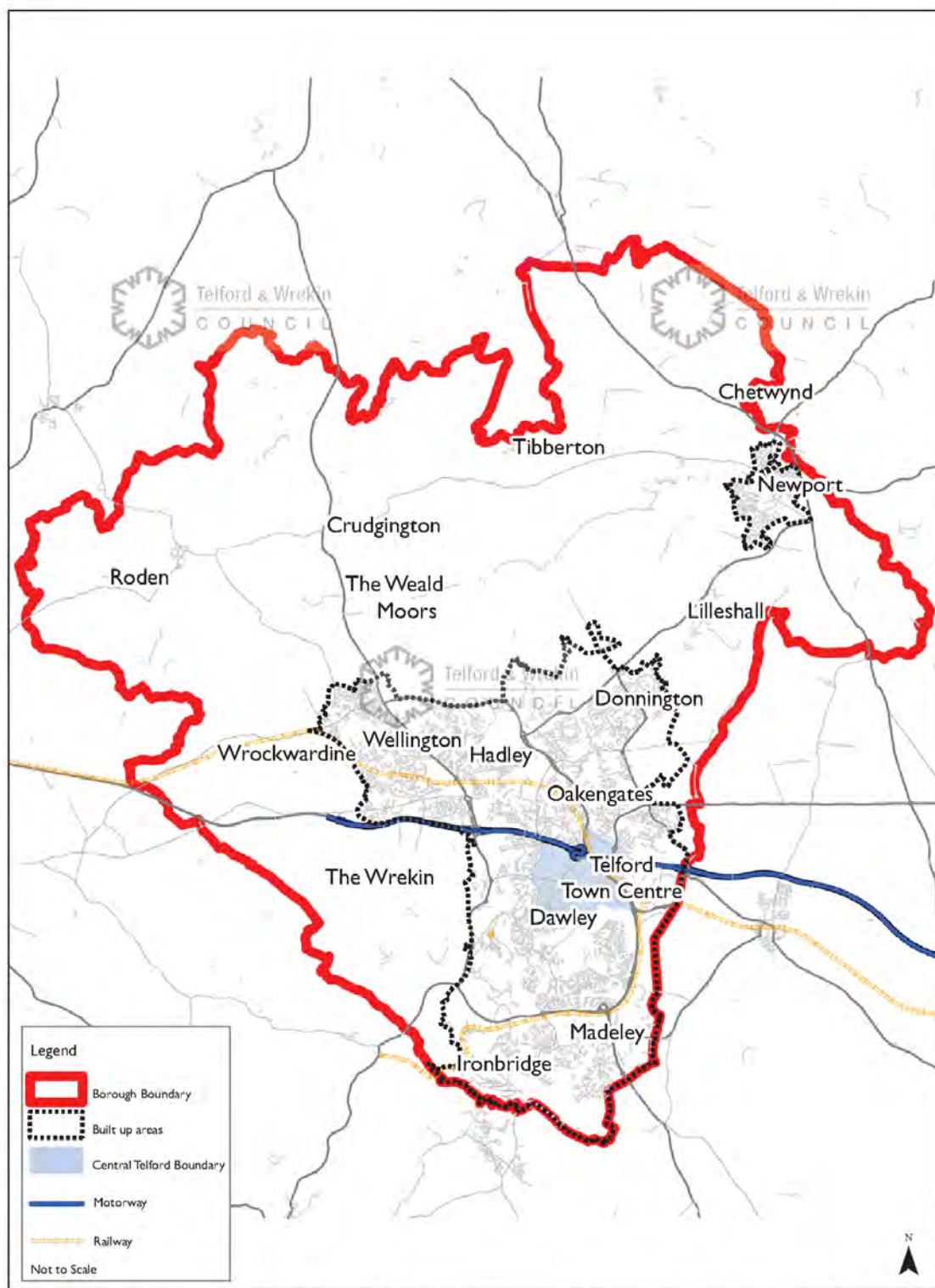
1.0.4 National Planning Practice Guidance (NPPG, paragraph 027) states that local planning authorities must publish information at least annually that shows progress with Local Plan preparation (sections 11). The AMR reports on activity relating to the duty to cooperate (section 12) and shows how the implementation of policies in the Local Plan is progressing (sections 2 to 10). It should also report on any neighbourhood development orders or neighbourhood development plans (section 16).

1.0.5 The Telford & Wrekin Core Strategy covers the period up to 2016. For the period beyond 2016, the Telford & Wrekin Local Plan will include the planning policies to deliver a spatial development strategy based on a long-term spatial vision for the Borough up to 2031. The Telford & Wrekin Local Plan sets out the Council's priorities and policies for development and will contain planning policies which will manage where homes, businesses, shops and green spaces will be located within the borough.

1.0.6 For further information on Telford & Wrekin Local Plan and planning policy for Telford & Wrekin, please see the website via the following link - www.telford.gov.uk/localplan

1 Introduction

Map 1.1 Map of the Borough



Reproduced from the Ordnance Survey mapping with the permission of the Controller of Her Majesty's Stationery Office © Crown copyright. Unauthorised reproduction infringes Crown copyright and may lead to prosecution or civil proceedings Borough of Telford & Wrekin Licence No 100019694. Date: 2013
Drawn by Richard Overby Location r:\d\AMR\AMR2012TownBoundary.mxd

2 Housing

2.0.1 Within this section you will find information related to housing development, with 2014/15 completions and commitments.

2.1 Completions

2.1.1 Table 2.1 below shows the rate of completions over the period since 2006/7. In the second half of the period there has been a rapid rise in the number of dwellings delivered.

Table 2.1 Housing Completions

	2006/7	2007/8	2008/9	2009/10	2010/11	2011/12	2012/13	2013/14	2014/15	Total
Telford	365	246	407	468	511	622	591	795	947	4952
Newport	50	61	36	3	20	82	13	39	87	391
Rural Area	37	56	19	12	20	16	3	8	40	211
Total	452	363	462	483	551	720	607	842	1074	5554

2.1.2 Within 2014/15 there has been a net addition of 1074 dwellings, this equates 1161 gross new dwellings.

2.1.3 Table 2.2 shows that as of April 2015 968 dwellings were under construction with a large number of these being within Telford. Steps continue to be taken to enable the delivery of these developments. With a large amount of dwellings under construction it is anticipated that 2015/16 will yet again have a higher level of completions.

Table 2.2 Dwellings with permission (not yet completed)

	Under construction	Not started
Telford	814	7666
Newport	118	519
Rural	39	183
Borough total	968	8368

2.1.4 Table 2.3 shows the amount of affordable homes provided within the borough has continued to increase since the adoption of the Core Strategy. The amount of affordable housing delivered within 2013/14 is 40% and the figure approximately a third over the plan period. These figures exclude tenure switches for example mortgage rescue.

2 Housing

Table 2.3 Affordable Homes Provided

	Social Rent Homes Provided	Intermediate Homes Provided	Total Affordable Homes Provided
2006/7	12	9	21
2007/8	73	0	73
2008/9	139	0	139
2009/10	170	14	184
2010/11	137	65	202
2011/12	195	80	275
2012/13	180	103	211
2013/14	265	54	319
2014/15	427		427

2.1.5 Since the adoption of the 2006/7, approximately two thirds of dwellings have been constructed on previously developed sites.

Table 2.4 Residential Completions by Previously Developed Land (PDL) type

		2006/7	2007/8	2008/9	2009/10	2010/11	2011/12	2012/13	2013/14	2014/15
Green Field	No.	51	65	22	50	81	184	269	555	588
	(%)	13	20	5	10	15	27	44	66	55
Previously Developed	No.	327	255	410	433	470	500	338	287	486
	(%)	87	80	95	90	85	73	56	34	45

2.1.6 There is also a legacy of additional sites that were granted permission under the New Towns Act, otherwise known as 'section 7(1) sites'. These are long-standing sites, with indicative capacities, that in theory could come forward for development at any time. The full schedule of remaining sites within this category is included in appendix 7. These are separate to the sites included in appendices relating to existing commitments.

2.2 Strategic Site Update

2.2.1 Lawley – Telford’s largest residential development saw the delivery of the 1,000th home this year and the consortium of national house-builders are now providing in excess of 250 new dwellings per annum to the housing stock of Telford. The vibrant local centre will soon be complemented by the new Lawley Village Primary Academy which is under construction off Martingale Way and due to be open in January 2016.

2.2.2 Lightmoor Village – Keepmoat Homes have nearly completed their phase of 105 units with Crest Nicholson due to finish their phase of 66 units by 2016.

2.2.3 Telford Millennium Community – This major development saw a lot of activity this year with the completion of Rose Manor and Oleander House by the Sanctuary Group providing 98 units of supported living accommodation. Taylor Wimpey also delivered 76 residential units across a variety of tenures.

3 Economic Development

3 Economic Development

3.0.1 The information and data set out in this section has been obtained from planning application monitoring and from ONS through their NOMIS website. ⁽¹⁾

3.1 Employment

3.1.1 As of April 2015 the number of people unemployed within Telford & Wrekin dropped to 4700 and has since dropped further to 4500 this represents 5.6%. This is below the regional and national levels. Outside of the monitoring period the unemployed in the economically active range has continued to fall to 5.4% and is now at its lowest level since 2008.

Table 3.1 Employment levels by type

	Numbers in Employment (June 2015)	Difference from March 2014
1 Managers, directors and senior officials	6,700	-1,300
2 Professional occupations	13,400	+1,000
3 Associate professional & technical	10,100	+700
4 Administrative & secretarial	8,000	+1,000
5 Skilled trades occupations	9,200	+1,200
6 Caring, leisure and other service occupations	6,400	-100
7 Sales and customer service occupations	6,900	-500
8 Process plant & machine operatives	5,700	-2,000
9 Elementary occupations	11,200	-100
Totals:	77600	-400

3.1.2 The largest grouping is still within professional occupations, and this has been on the increase. There have also been large increases in the number of people working in skilled trades occupations as well as administrative and secretarial occupations. There has been a large decrease in process plant and machine operatives. The gains and losses remain balanced with a small net loss overall.

3.1.3 Elementary occupations cover those which require the knowledge and experience necessary to perform mostly routine tasks, often involving the use of simple hand-held tools and, in some cases, requiring a degree of physical effort.

1 <http://www.nomisweb.co.uk/>

3.2 Employment Land

3.2.1 Telford & Wrekin continues to have a substantial supply and a wide variety of employment land and premises available for businesses and developers as indicated by Table 3.2.

3.2.2 The figures in the following table are a summary of the amount of land available (in hectares) for new build employment development at April 2015. More detailed figures are set out in Appendix 6a.

Table 3.2 Employment land available by use class (hectares)

	B1(a) (Offices)	B1(b) (Research & Development)	B1(c) (Light Industry)	B2 (General Industry)	B8 (Warehousing & Distribution)	Totals
Telford	47.89	0.12	7.82	25.77	14.60	96.2
Newport	1.39	0	5.84	2.92	6.06	16.21
Rural Area	0.34	0.03	1.62	0.72	2.08	4.79
Borough Total	49.62	0.15	15.28	29.41	22.74	117.2

3.2.3 Table 3.2 shows that Telford continues to contain the majority of the available employment land in the borough. There is a limited amount of new build employment land is available within Newport and the Rural Area with the majority of the land available being through extensions, change of use or replacement developments.

3.2.4 Table 3.3 summarises the changes in employment floorspace in the borough between 1st April 2014 and 31st March 2015. All figures presented are net square metres (i.e. floorspace losses are deducted from floorspace gains).

Table 3.3 Employment floorspace completions (m²)

	B1(a) (Offices)	B1(b) (Research & Development)	B1(c) (Light Industry)	B2 (General Industry)	B8 (Warehousing & Distribution)	Totals
Telford	993.01	0	1041	21078.51	7058.1	30170.62
Newport	0	0	0	0	0	0

3 Economic Development

	B1(a) (Offices)	B1(b) (Research & Development)	B1(c) (Light Industry)	B2 (General Industry)	B8 (Warehousing & Distribution)	Totals
Rural Area	37	0	2042.89	235.6	-674	1641.49
Borough Total	1030.01	0	3083.89	21314.11	6384.1	31812.11

3.2.5 Overall there has been a gross addition of 41651m² of B use class employment floorspace within the borough. This is a net gain of over 31812m² of employment floorspace. There has been large gains in B2 floorspace at Faccenda and Craemer on Hortonwood. There has also been the development of a new B8 warehouse at Hortonwood which contributed to the gain.

3.2.6 It is acknowledged that, similar to housing, there are a large number of extant section 7(1) consents for employment. The majority of these are proposed allocations under the Telford & Wrekin Local Plan.

3.3 Retail and Town Centres

3.3.1 This section examines the changes that have taken place in floorspace and development land for retail and other town centre uses. 'Town centre uses' are defined in the National Planning Policy Framework as;

- retail;
- leisure;
- entertainment facilities;
- more intensive sport and recreation uses;
- offices, and;
- arts, culture and tourism development.

3.3.2 For the purposes of monitoring, these are taken to mean developments that fall within the A1, A2, A3, A4, A5, B1(a) and D2 categories of the Use Classes Order⁽²⁾. Table 3.4 sets out the changes to floorspace (net square metres) within these town centre use classes that have occurred in the monitoring year 1st April 2014 to 31st March 2015.

2 The Town and Country Planning (Use Classes) Order 1987 (as amended)

Table 3.4 Changes to floorspace (net square metres) within Town Centre use classes

	A1 (Retail)	A2 (Financial & Professional)	A3 (Restaurants & Cafes)	A4 (Drinking Establishments)	A5 (Hot Food Takeaways)	B1(a) (Offices)	D2 (Assembly & Leisure)
Telford	29483.62	-318.32	3645.5	1272.5	629.4	993.01	8262.23
Newport	-2,663	-	-	92	-	-	128
Rural Area	-	-	-	-	-	37	-
Borough Total	26820.62	-318.32	3645.5	1364.5	629.4	1030.01	8390.23

3.3.3 Overall, there has been a gain in floorspace throughout the borough for all Town Centre uses, excluding A2. The changes to A2 are accounted for in other use classes.

3.3.4 The loss of A1 at Newport has already been replaced by a new larger A1 unit outside of the monitoring period.

3.3.5 Table 3.5 breaks down the completed town centre uses by the different centres in the borough.

Table 3.5 Town Centre uses completed by Centre

	A1 (Retail)	A2 (Financial & Professional)	A3 (Restaurants & Cafes)	A4 (Drinking Establishments)	A5 (Hot Food Takeaways)	B1(a) (Offices)	D2 (Assembly & Leisure)	Total Floorspace change in Town Centre Uses
Dawley	-13.5	-142	-	-	142	-	-	-13.5
Donnington	-	-	-	-	-	-	-	-
Hadley	-	140	-	-	-	-	-	140
Madeley	1400	238	-	-	-	-	-	1638
Newport	-50	-	-	-	-	-	-	-50
Oakengates	-211.68	90.68	135	-	-	-	-	14
Telford	-461	-	1537.5	312.5	-	-	-	1389
Wellington	-49	-	121	-531	-	-	-100	-559
Total within centres	614.82	326.68	1793.5	-218.5	142	-	-100	2558.5

3.3.6 With regards to centres in the borough, there has been an overall growth in floorspace. There has been some minor losses of pubs and some retail uses to dwellings, other A use classes and sui generis uses. Telford town centre has experienced overall growth particularly due to the delivery of schemes at Southwater.

4 Travel and Accessibility

4 Travel and Accessibility

4.0.1 The third Local Transport Plan (LTP3) for Telford & Wrekin was approved in early 2011 and sets out how the Council will plan to manage, maintain and develop the Borough's network over the period 2011 to 2026.

4.0.2 The six Local Transport Plan goals which will help achieve the overall vision for 2026 are:

1. Making travel more reliable and efficient, to attract jobs and support growth and regeneration.
2. Maintain highways effectively and efficiently
3. Reduce carbon emissions to help tackle climate change
4. Allow everyone to access jobs, education, healthcare, shops and leisure
5. Improve safety and security on the transport network and promote active travel choices which encourage people to be healthier
6. Improve the quality of life by reducing the visual, noise, air quality and other impacts of transport on people and the local environment.

4.0.3 The LTP3 comprises an overarching core strategy which provides the guiding principles for the management and improvement of the transport network, and a series of individual strategies that will be developed in order to tackle specific topics. Examples of individual strategies include the Rights of Way Improvement Plan, Asset Management Plan and Road Safety Strategy.

4.0.4 The Local Sustainable Transport Fund (LSTF) is a programme launched by government in January 2011. It was established in support of the Local Transport White Paper 'Creating Growth, Cutting Carbon: Making Sustainable Local Transport Happen'. It will provide £560 million over the next 4 years for local highway authorities to deliver sustainable transport improvements in their areas which will meet the primary objectives of supporting economic growth and achieving carbon reduction.

Picture 4.1 Wellington Bus Station



4.0.5 Travel Telford represents an investment programme in sustainable, low carbon, low cost transport for Telford & Wrekin. The Council were successful in securing £3.5million of DfT 'Local Sustainable Transport' funding direct from Central Government. The aim of Travel Telford has been to help to reduce the impact of pollution and carbon emissions on the local environment as well as help support and stimulate economic growth across the whole Borough. Schemes included within the programme are focused on three target areas including:

- Tourism
- Business
- Schools

4.0.6 The following is a brief description of the key schemes:

- Ironbridge Park and Ride/Gorge Connect - A new Park and Ride site with access into the heart of Ironbridge.
- Improvements to cycle routes – including enhancement of the Silkin Way and the creation of a new 'cycle friendly' route between Telford/Newport/Stafford as well as targeted investments to the core cycle network.
- Telford Central Railway Station to Telford Town Centre - An improved pedestrian/cyclist route from the railway station giving improved access to major destinations including Telford Shopping Centre and Telford International Conference and Exhibition Centre.

4.0.7 The Council have also been successful in securing a large (£8.4million) LSTF funding bid for improvements to Telford Town Centre Box Road. The scheme has recently been completed and will help enhance the town centre by creating a more pedestrian and cyclist friendly environment, helping to reduce traffic flow around the town centre and open up further development opportunities. The 'Box Road' scheme has seen the replacement of a three lane one way highway with two way urban boulevards around three sections of the box as well as the creation of a 'shared space' street on Coach Central, helping to better link the shopping centre to the Southwater Development.

4.0.8 The Council have been successful in securing funding for further highway network improvements as part of the Marches Local Enterprise Partnership growth deal. This funding will be targeted on key junction improvements on the highway network between 2015 - 2017.

5 Water and Flood Risk

5.0.1 National guidance set out in the National Planning Policy Framework (NPPF) states inappropriate development in flood risk areas should be avoided by directing development away from areas of highest risk, but where development is required making it secure without increasing flood risk elsewhere. The Environment Agency provide advice on applications to which they object to over flood risk or water quality via their website.

5.0.2 In respect of Telford & Wrekin, no planning permissions were granted which were contrary to Environment Agency advice on flooding or water quality.

5.0.3 As part of the evidence base for the Telford & Wrekin Local Plan the Council will complete a Water Cycle Study (WCS). The study will be completed alongside the plan in order to provide evidence on water and wastewater infrastructure, and the wider water environment.

6 Biodiversity

6.0.1 There are eight designated Sites of Special Scientific Interest (SSSI) in Telford & Wrekin and Natural England carries out regular Condition Monitoring on these sites to assess the percentage of SSSI's in Favourable Condition.

Table 6.1 Results of Natural England 2015 Condition Monitoring of SSSI's in Telford & Wrekin

SSSI Name	Reason for designation	% Area Meeting PSA target	% Area favourable	%Area unfavourable recovery	% Area unfavourable no change	% Area unfavourable decline	% Area destroyed/ part destroyed
Allscott settling Ponds	Series of lagoons supporting bird population of County importance					100	
Lincoln Hill	Geological SSSI with varied rock exposures	100		100			
Lydebrook Dingle	Narrow steep sided dingle with ancient and relatively undisturbed woodland.	100		100			
Muxton Marsh	Good example of unimproved grassland, fen and carr remaining as a result of coal mining.	100		100			
New Hadley Brick Pit	Geological SSSI of outstanding importance for interpreting the geological history of the late Carboniferous in Britain.	100	100				
Newport Canal	Disused canal with assemblage of aquatic plants of value in Shropshire.				100		
The Wrekin & The Ercall	Prominent ridge of geological and biological importance. Valuable woodland supporting bird assemblage.	100	100				
Tick Wood and Benthall Edge Wood	An area of ancient native mixed deciduous woodland overlooking the Severn Gorge. Several uncommon plant species have been recorded,	100	10.35	89.65			

6 Biodiversity

SSSI Name	Reason for designation	% Area Meeting PSA target	% Area favourable	%Area unfavourable recovery	% Area unfavourable no change	% Area unfavourable decline	% Area destroyed/ part destroyed
	including fingered sedge which is only known in the Shropshire locality.						

6.0.2 The majority of the SSSI's in Telford & Wrekin are in favourable condition or in unfavourable recovering condition which is considered, by Natural England, to indicate that appropriate action is being undertaken to move towards favourable condition. Newport Canal remains in unfavourable and declining condition.

6.0.3 Local Nature Reserves (LNR) are designated by the Local Planning Authority in partnership with Natural England, Town and Parish Councils and interested community groups. Telford & Wrekin currently has 6 designated Local Nature Reserves, as listed below, and is in the process of designating additional areas and extending others.

6.0.4 Designated Local Nature Reserves in Telford & Wrekin:

- Granville Country Park
- Limekiln Wood
- Lodge Field
- Madebrook Pools & Stirchley Dingle
- Telford Town Park
- The Ercall & Lawrence's Hill

Table 6.2 Proposed Local Nature Reserves in Telford & Wrekin

Site Name	Stage in designation process	Timescale for designation
Apley Castle pLNR	A draft management plan is being prepared for the site and LNR boundary has been confirmed.	Spring 2017
The Cockshutt pLNR	A draft management plan is being prepared along with a draft boundary for consultation	2017
Dothill Park and Beanhill Valley pLNR	The report was approved on 27th march 2014 and the boundaries need to be confirmed.	Spring 2016
The Beeches pLNR	A draft management is being prepared for this site.	Spring 2017
Lightmoor pLNR	This site has a management plan and a draft boundary is being prepared for consultation	2017
Madeley Pitmounds pLNR	The management plan has been agreed and the internal consultation has occurred. The proposal was approved by cabinet in February 2014.	Spring 2016
Randlay Valley pLNR	A draft management plan has been prepared for this site	2017
Dawley Pools and Pitmounds pLNR	Very early stages of engagement	2017
Rough Park pLNR	Very early stages of engagement	2017
Ketley Paddock Mound pLNR	Management plan in preparation	Spring 2017

6.0.5 There are two types of Locally Designated Sites in Telford & Wrekin:

6.0.6 Local Wildlife Sites (formally known as County Wildlife Sites) are adopted by Shropshire Wildlife Trust in partnership with a range of organisations including Local Authorities and Natural England based on areas of land, either in private or public ownership, which represent examples of high quality habitats or which support a range of important species.

6.0.7 Local Geological Sites (formerly known as Regionally Important Geological or Geomorphological sites RIGS) are adopted by Shropshire Geological Society in partnership with a range of organisations including Local Authorities and Natural England and represent high quality examples of geological exposures and other formations.

6 Biodiversity

6.0.8 There are 47 Local Wildlife Sites and 24 Local Geological Sites in Telford & Wrekin. The adoption of new sites is managed through the Local Sites Partnership of which Telford & Wrekin Council is a member.

6.0.9 Local Authorities are required by Defra to report the proportion of Locally Designated Sites in their area which are in 'positive management' under Single Indicator 160-00. 'Positive management' is taken in Shropshire to mean: that more than 50% of the site is in an appropriate woodland grant scheme or higher level stewardship scheme, that the site has a formal management plan, that the site has been recently visited and seen to be in good condition or that Shropshire Wildlife Trust (or Shropshire Geological Society) has visited the site and provided the owner with formal advice which is being acted upon.

Table 6.3 Proportion of Locally Designated Sites in 'positive management' in Telford & Wrekin

Type of Locally Designated Site	Number of sites in Telford & Wrekin	Number of sites in 'positive management'	Total Percentage of Local Sites in 'positive management'
Local Wildlife Sites	44	29	66 %
Local Geological Sites	24	14	

6.0.10 The percentage of Locally Designated Sites in 'positive management' is measured annually and reported to Defra. 66% of Locally Designated Sites in Telford & Wrekin are in 'positive management'. This is significantly above surrounding Counties, Shropshire Council for example reports only 37% of sites in 'positive management'. This is because Telford & Wrekin has secured either ownership or management control over a larger proportion of its Locally Designated Sites than most other Local Authorities. Across the whole of the VC40⁽³⁾ area, which includes Shropshire and Telford & Wrekin, the Local Sites Partnership aims for an increase of 5% annually in the number of sites which can be assessed as in 'positive management.'

3 VC40 refers to the Vice County. This is a geographical division of the British Isles, used for the purposes of biological recording.

7 Green Spaces

7.0.1 Telford has extensive areas of green space, much of it formed by the pioneering "Green Network" designation which has helped to provide protection.

7.0.2 The Green Network is an urban green space designation which recognises the strategic nature and significance of green infrastructure planning within the Borough. It aims to protect, provide, enhance and expand the green infrastructure assets which contribute to the quality of life within the urban area of Telford. The table below shows planning application decisions made by the Council during 1st April 2014 and 31st March 2015 in areas within and adjacent the Green Network.

Table 7.1 Planning application adjacent or within Green Network

Type of application	Refused	Granted	Total
Full	9	167	176
Outline	4	13	17
Reserved matters	0	12	12
Advertisement	3	13	16
Listed Building	0	8	8
Conservation	0	0	0
Trees in Conservation Area	0	20	20
Tree Preservation Order	0	8	8
Section 192 Proposed Use	0	1	1
Householder (Prior Approval)	0	3	3
Demolition determination	0	2	2
TOTAL	16	247	263

7.0.3 The significant pressure for development within urban areas is a matter with impact on green network. The table above shows planning decisions made by the Local Planning Authority on planning applications which were either within or adjacent the Green Network. It must be noted that most of the applications did not result in a change to the green network or reduction in its area. The majority are minor applications for conversions of existing buildings and advertisement consents. Applications also provide additional open space and improvements to the green network. Proposed housing development will generally result in an overall improvement to open space provision in the locality as it will have a wider community benefit and meet the aims of the Green Network.

7 Green Spaces

7.0.4 Telford & Wrekin Council has a Green Infrastructure Framework (2012). This includes a comprehensive overview of the provision and performance of the green infrastructure present in the borough, identifying what green infrastructure currently exists; what it is (the type), where it is (the distribution) and what it is currently doing (how it functions).

7.0.5 The Council has published a new Local Plan which carries forward the green network designation. The Local Plan has updated and improved the Green Network designation so that it is compliant with the NPPF, and addresses the type and function of land as well as the amount of open space which is included in the designation.

8 Waste and Minerals

8.1 Waste

8.1.1 As can be seen from Table 8.1, there has been a significant increase in the total of waste arisings between 2014 to 2015. It is important to note that these figures are provisional as they are yet to be audited by DEFRA.

Table 8.1 Amount of municipal waste arising in Telford & Wrekin

	Year	Landfill	Incineration with EfW*	Incineration without EfW*	Recycled/composted	Other	Total waste arisings
Amount of waste arisings in tonnes	2007	56153.80	0	0	29727.07	0	85880.87
	2008	63216.15	122.83	0	30214.81	0	93553.79
	2009	56693.18	89.83	0	31560.96	0	88343.97
	2010	54390.18	61.44	0	35064.21	0	89519.99
	2011	51520.03	58.74	0	37103.94	0	88682.71
	2012	50589.32	82.31	0	35346.84	0	86018.47
	2013	46917820	196.63	0	34995.94	0	82110.39
	2014	45479.54	74.28	0	36733.24	0	82287.06
	2015	44180.63	1,426.09	0	40215.99	0	85822.71
* - EfW is energy from waste, for example as electricity or heating.							

8.1.2 The recycled/composted column includes the re-use figure. Since 2007 the amount of waste sent to landfill has fallen whilst the amount of waste recycled, re-used or composted has increased significantly.

8.2 Minerals

8.2.1 Shropshire Council and the Borough of Telford & Wrekin are combined as a single sub region for the purpose of aggregates supply allocations. The Government requires that Mineral Planning Authorities should plan for a steady and adequate supply of aggregates. To support this planning the Council have produced a draft Local Aggregate Assessment to ascertain whether there is a shortage or surplus of supply. This will provide evidence that will be used to determine the level of provision of mineral aggregates to be made in the preparation of the Local Plan. The Local Aggregates Assessment should be considered alongside the Annual Monitoring Report.

Primary Aggregates

8.2.2 The NPPF requires the Council to identify a landbank of 7 years or above for sand and gravel. The current landbank for the sub region of Shropshire and Telford & Wrekin is entirely met by sites within Shropshire since there are no currently permitted reserves within the Borough. The landbank of permissions for sand and gravel working has remained consistently above the minimum target level of 7 years. The permitted landbank of permissions was equivalent to about 18.9 years production. The latest available data indicates that the 10 year average for sand gravel production in Shropshire and Telford & Wrekin is 0.72mt and the 3 year average is 0.65mt, both of which are below the current production guideline of 0.82mt.

8.2.3 During 2014/15, there were no additional reserves of sand and gravel granted planning permission.

8.2.4 The NPPF requires the Council to identify a landbank of at least 10 years for crushed rock. The landbank of permissions for crushed rock working has remained consistently above the minimum target level of 10 years. The existing landbank is equivalent to 38.6 years. Data indicates a 3year average production of 2.31mt and a 10year average production of 2.29 years. During 2014/15, there were no additional reserves of crushed rock granted planning permission.

Secondary and recycled aggregates

8.2.5 Data on the production and use of secondary and recycled aggregates is limited and requires further consistent data collection from the industries involved. Figures for secondary and recycled materials used as aggregates are currently only collected sub-regionally and only limited information is available for Shropshire and Telford & Wrekin specifically.

8.2.6 Environment Agency data suggests that about 0.38 million tonnes of inert waste was handled at waste management facilities in the two areas in 2012. The arisings and use of both primary and secondary aggregates is currently in the process of being monitored as part of the new Local Aggregate Assessment regime, the findings of which will be reported in future annual monitoring reports.

Industrial Minerals

8.2.7 Brick Clay is worked within the borough at Hadley Quarry, this site supplies Blockleys Brickworks. In 2005 the site was granted planning permission to extend consequently increasing the permitted reserves by some 2.8million tonnes. Adequate permitted reserves of brick clay exist to maintain supplies up until year 2020.

9 Heritage

9.0.1 Telford & Wrekin benefits from a rich and diverse heritage. This heritage includes the Ironbridge Gorge World Heritage Site, urban Conservation Areas of Newport, Wellington and Horsehay, rural Conservation Areas in Edgmond, High Ercall and Wrockwardine together with numerous listed buildings, locally listed buildings, Scheduled Ancient Monuments and archaeological features. This built heritage is important not only for its historical significance but also in its contribution to community identity, education and environmental quality.

9.0.2 Currently the main indicator for heritage is the change in extent of Conservation Areas. This is shown in Table 9.1.

Table 9.1 Conservation Areas

Conservation Area	Hectares	Character Appraisal	Management Proposals
Edgmond	24.2	Yes	Yes
Newport	22.4		
Wrockwardine	26.9		
High Ercall	9.5	Yes	Yes
Wellington	8.2	Yes	Yes
Horsehay	25.1		
Severn Gorge	417.9	Yes	Yes
Borough	531.9	-	-

9.0.3 Conservation Areas also shows which of the Conservation Areas have Character Appraisals and Management Proposals. Although over 50% of the Conservation Areas (86% in terms of area) now have both in place, there has been no change within the last year. Wrockwardine Conservation Area Character Appraisal was subject to a 8 weeks public consultation between June and August 2015 and is due for adoption early 2016. Horsehay Conservation Area Character Appraisal is currently being drafted and will be subject to public consultation during 2016.

10 Renewable Energy and Climate Change

10.0.1 Existing planning policy (the Core Strategy and saved Wrekin Local Plan policies) and emerging planning policy in the Local Plan recognise and promote sustainable planning and design through both passive (such as accessible locations, layout, building orientation and energy efficient) and promote active (such as the use of photovoltaic panels) measures.

10.0.2 Development which has involved the delivery and use of renewable energy forms part of this objective.

10.0.3 The following provides an indication of the borough's commitment to renewable energy.

Table 10.1 Renewable Energy Schemes

Application Number	Description
TWC/2014/0121	Installation of solar panels
TWC/2014/0134	Installation of ground based solar photovoltaic farm
TWC/2014/0366	Installation of roof mounted solar panels
TWC/2014/0514	Installation of roof mounted solar panels
TWC/2014/0561	Installation of 16 solar panels
TWC/2014/0717	Installation of roof mounted solar panels
TWC/2014/0810	Installation of ground based solar photovoltaic farm

11 Development Plan Documents

11.0.1 The Council's current development plan comprises the following documents:

- Core Strategy (2007)
- The Central Telford Area Action Plan (2011)
- Wrekin Local Plan (1995 to 2006) (saved policies)
- The Shropshire and Telford & Wrekin Minerals Local Plan (2000) (saved policies)
- The Shropshire and Telford & Wrekin Joint Structure Plan (2002) saved policies)
- The Madeley Neighbourhood Development Plan (2015)

11.0.2 The Council is currently working on the Telford & Wrekin Local Plan and when adopted, the Local Plan will replace all of the borough's current development plan documents (DPDs) except for the Madeley Neighbourhood Development Plan. The Council will also prepare new Supplementary Planning Documents (SPDs) to support the Local Plan.

11.1 Local Development Scheme Milestones

11.1.1 The Local Development Scheme (LDS) explains which planning policy documents make up the Telford & Wrekin Development Plan and is a requirement of the Planning and Compulsory Purchase Act 2004 (as amended). The LDS identifies which development plans will be produced, in which order and when.

11.1.2 The LDS timetable for the Telford & Wrekin Local Plan is shown on the table below and the current LDS is available on the Council's website via the following link http://www.telford.gov.uk/info/20172/planning_policy_and_strategy/542/local_development_scheme.

Table 11.1 Timetable for delivering the Telford & Wrekin Local Plan

Task	Date
Consultation on Local Plan (Regulation 18)	3rd August to 25th September 2015
Review comments received during consultation	September 2015 to December 2015
Finalise evidence base to support Local Plan	December 2015
Publication of Local Plan (Regulation 19)	January to February 2016
Submission of Local Plan for independent examination	April 2016
Local Plan adopted	December 2016

11.1.3 As part of work on the Local Plan, the Council consulted on the Proposed Housing and Employment Sites from 6 May to 17 June 2014. This helped to inform the sites now proposed in the Local Plan. The Council is on track to publicise the Local Plan as outline in the table above with adoption in line for end of 2016.

12 Duty to cooperate

12.0.1 Under Section 110 of the Localism Act 2011 local authorities have a legal duty to engage constructively, actively and on an on-going basis to maximise the effectiveness of Local Plan preparation in the context of strategic cross boundary matters.

12.0.2 Since the last AMR, the council has published a new Local Plan (Regulation 18 consultation) and has engaged with the full range of duty to cooperate bodies and neighbouring local planning authorities on matters of a strategic nature. The process followed by the council up to the formal consultation stage is presented in more detail in the Duty to Cooperate Statement (2015), available on the council website.

12.0.3 Engagement will be ongoing in the lead-up to the publication version of the Local Plan, and the Duty to Cooperate Statement will be updated accordingly.

13 Core Strategy

13.0.1 The Telford & Wrekin Core Strategy was adopted in 2007 and includes planning policies covering the period up to 2016.

13.0.2 The adopted Core Strategy includes a section on Implementation and Monitoring. Core Strategy Indicators Progress Summary shows the performance of the Core Strategy against the indicators. If the indicator is on track it receives 1 point, whilst those not showing any notable trend or the indicator is unmeasurable it receives a zero. Those which are not performing, receive -1. Each policy has several indicators, for each policy the total for all the indicators are given in Core Strategy Indicators Progress Summary.

13.0.3 A number of the indicators are linked to the completion of dwellings in previous years and so related policy areas will have lower scores. However the rate in house building within the borough has increased over the last few years so the scores are also expected to increase. Work has been completed at Southwater and together with redevelopment of the Shopping Centre following the approval of planning permission, this is will be reflected in future scores.

13 Core Strategy

Table 13.1 Core Strategy Indicators Progress Summary

Policy	Title	Score
SDS	Spatial Development Strategy	+1
CS1	Homes	+3
CS2	Jobs	0
CS3	Telford	+1
CS4	Central Telford	+1
CS5	District and Local Centres	+2
CS6	Newport	+1
CS7	Rural Area	+1
CS8	Regeneration	+1
CS9	Accessibility and Social Inclusion	+1
CS10	Community Facilities	+1
CS11	Open Space	0
CS12	Natural Environment and	+1
CS13	Environmental Resources	
CS14	Cultural, Historic and Built Environment	0
CS15	Urban Design	0

13.0.4 The Telford and Wrekin Core Strategy covers the period up to 2016. For the period beyond 2016, the Telford & Wrekin Local Plan will include the planning policies to deliver a spatial development strategy based on a long-term spatial vision for the Borough up to 2031.

14 Central Telford Area Action Plan

14.0.1 As with the Core Strategy, the Central Telford Area Action Plan includes a monitoring framework. Rather than score each policy, the document scores performance based on Vision Themes. For each theme there are several indicators. If the indicator is on track it gets 1 point or if it is negative trend it gets a -1, those not showing any notable trend or the indicator is unmeasurable, get zero. Central Telford Area Action Plan Progress shows the scores for all the indicators per vision theme.

Table 14.1 Central Telford Area Action Plan Progress

Objective	Title	Score
Vision Theme 1	A Centre with a Vibrant Heart	+6
Vision Theme 2	A Distinctive Sense of Place	+2
Vision Theme 3	A Place for Living	-1
Vision Theme 4	A Centre with a Thriving Economy	+1
Vision Theme 5	An Accessible and Connected Centre	+4
Vision Theme 6	A Centre with Low Environmental Footprint	0
Vision Theme 7	A Green Community	+3

14.0.2 As the delivery of developments around the Town Centre are now progressing, many of the indicators are positive. It is expected that this will improve further as developments and improvements are completed.

15 Infrastructure Delivery Planning and Community Infrastructure Levy

15 Infrastructure Delivery Planning and Community Infrastructure Levy

15.0.1 A Community Infrastructure Levy (CIL) is a method that can be used to deliver the infrastructure related to the development strategy for an area. A CIL includes a charging schedule relating to the infrastructure needed and requires the local planning authority to have in place an up-to-date adopted development plan to provide a strategy and proposals against which the infrastructure schedule is worked up. The Council currently seeks developers contributions through Section 106 planning obligations.

15.0.2 The Council is keeping the feasibility of preparing a CIL under review. A CIL will only be prepared where its preparation is viable and feasible in the Telford & Wrekin area. If this can be demonstrated, it would be prepared alongside related stages of work on the Local Plan. The target date for the CIL examination would be immediately following the Local Plan Examination.

15.0.3 In conjunction with the ongoing work on the Telford & Wrekin Local Plan, the Council is also preparing an Infrastructure Delivery Plan (IDP). This will be used as an evidence base to inform the preparation of any CIL. The Council is currently consulting with infrastructure providers to help understand their requirements, as well as how the new Local Plan, along with any allocated sites, may affect infrastructure.

16 Neighbourhood Planning

16.0.1 Town and Parish Councils (or Neighbourhood Forums in other areas without parishes) can now prepare Neighbourhood Development Plans and Neighbourhood Development Orders. A Neighbourhood Development Plan can enable communities to establish general planning policies for development and use of land in their area. It can be detailed, or general, depending on what local people want and forms part of the Development Plan. To be put in place a plan needs to pass a number of tests; it must conform to national planning policies and the strategic policies of Telford & Wrekin Council.

16.0.2 In accordance with the Localism Act (2011) and Neighbourhood Planning (General) Regulations 2012 the Parishes prepare these plans, rather than Telford & Wrekin Council, although Telford & Wrekin Council offers advice and assistance.

16.0.3 Telford currently has 1 made Neighbourhood Development Plan and 4 designated Neighbourhood Development Plan Areas, which are working towards the production of a Neighbourhood Development Plan for their area.

16.0.4 Madeley Town Council made the first neighbourhood plan in the borough. A referendum was held on 29th January 2015 for Madeley Town Council Neighbourhood Development Plan receiving a majority 'yes' vote. The result was 94% of valid votes in favour and 6% against. Overall turnout at the referendum was 16.57% from a 12,126 electorate. The Madeley Neighbourhood Development Plan was officially made in March 2015 and will now be used to inform planning decisions in the area.

16.0.5 In October 2013, Stirchley & Brookside Parish Council applied to designate the Parish area of Stirchley & Brookside as a neighbourhood area outside of the Frontrunner scheme and were designated in January 2014. Ercall Magna Parish and Newport Town Council are also have designated areas and are preparing Neighbourhood Development Plans for their respective areas as local "Frontrunner" pilots for Neighbourhood Planning. At this stage, no Neighbourhood Development Orders are proposed in Telford & Wrekin.

16.0.6 Waters Upton Parish Council submitted the Waters Upton Neighbourhood Plan and has been the subject of an independent examination in 2015 with the intention of going for referendum during spring of 2016.

16.0.7 Further details of progress of the Neighbourhood Development Plans under preparation in Telford & Wrekin will be provided on the Council's website www.telford.gov.uk/neighbourhoodplanning as well as where possible on the relevant Parishes own websites.

17 Appendix

17.0.1 Attached below are appendices which shows the raw data which has been collected. Please note that more recent planning applications with the TWC prefix are reverted back to W prefix. For example TWC/2014/0001 becomes W2014/0001.

Appendix 1 - Residential Plots Completed in 2014/15

Ward Name

	Application No	Address	Previous Use	Hectares	Completed
Apley Castle					
	W2013/0997	Land at, Lawton Farm Way, Leegomery, Telford, Shropshire	GR		4
Arleston					
	W2007/0535	Site B, Limekiln Lane, Wellington	FE	3.70	23
	W2014/0629	Communication House, 135 Watling Street, Wellington, Telford, Shropshire, TF1 2HN	FE	0.00	1
	W2012/0553	45-51 Princess Avenue, Arleston, Telford, Shropshire, TF1 2LJ	FR	0.13	5
	W2013/0207	Garages to rear of 44 & 46 Dawley Road, Arleston, Telford, Shropshire	FR	0.00	4
	W2013/0341	The Former Vicarage, Church Walk, Wellington, Telford, Shropshire	FR	0.09	2
	W2013/0942	Electricity Sub Station Site, Arleston Lane, Arleston, Telford, Shropshire.	GR	0.00	1
Brookside					
	W2012/0866	Land off Burford, Brookside, Telford, Shropshire,	OB	0.00	2
Church Aston and Lilleshall					
	W2014/0697	Willow Tree Cottage, Station Road, Newport, Shropshire, TF10 9LL	FR	0.00	-1
	W2013/0074	Green Bank, Pitchcroft Lane, Woodcote, Newport, Shropshire, TF10 9AU	FR	0.22	1
	W2008/0702	Village Farm, Preston, Shropshire	GR	0.09	1
	W2012/0139	Hill Farm House, Land adjacent, Old Farm Lane, Lilleshall, Newport, Shropshire,	GR	0.00	20
	W2012/0448	Land to rear of, 14 & 14a Humber Lane, Donnington, Telford, Shropshire,	GR	0.00	1
College					
	W2014/0630	The Three Crowns (Former) 7 High Street, Wellington, Telford, Shropshire, TF1 1LL	OB	0.00	7

FR - Former Residential FE - Former Employment OB - Other Brownfield GR - Greenfield

Ward Name

	Application No	Address	Previous Use	Hectares	Completed
<i>Cuckoo Oak</i>					
	W2012/0887	Site A, B, C, D & E, Sutton Hill Local Centre, Sutton Hill, Telford, Shropshire	GR	0.00	49
<i>Donnington</i>					
	W2014/0413	7 High Mount, Donnington, Telford, Shropshire, TF2 7NL	FR	0.00	-1
	W2013/0876	14, 14A, 16 & 16A The Crescent, Donnington, Telford, Shropshire, TF2 8HD	FR	0.05	3
	W2014/1007	Site of 26 - 48 The Glebelands & 31 - 47 The Common, Donnington, Telford, Shropshire,	FR		-21
	W2013/0499	34-42 High Mount, Donnington, Telford, Shropshire, TF2 7NL	GR	0.30	16
	W2013/0848	60 Hayward Avenue, Donnington, Telford, Shropshire, TF2 8DG	GR	0.00	1
<i>Edgmond</i>					
	W2014/0982	The Hollies, Cherrington Road, Tibberton, Shropshire, TF10 8NY	FR	0.00	1
	W2013/0625	Brook Farm, Chetwynd, Newport, Shropshire, TF10 8BL	OB	0.00	1
	W2015/0091	1 Calvington Cottage, Edgmond, Newport, Shropshire, TF10 8BE	OB	0.00	2
	W2015/0091	1 Calvington Cottage, Edgmond, Newport, Shropshire, TF10 8BE	OB	0.00	-1
<i>Ercall</i>					
	W2012/0303	Land at 349 Holyhead Road, Wellington, Telford, Shropshire, TF1 2EZ	GR	0.00	1
	W2012/1021	Ercall Wood Technology College, Limekiln Lane, Wellington, TF1 2JA	OB	0.00	50
	W2013/0545	62 Wrekin Road, Wellington, Telford, Shropshire, TF1 1RJ	OB	0.00	10
	W2014/0051	62 Wrekin Road, Wellington, Telford, Shropshire, TF1 1RJ	OB	0.00	4
<i>Ercall Magna</i>					
	W2014/1044	Holly Cottage, 30 The Fields, Crudgington, Telford, Shropshire, TF6 6ED	FR	0.00	1
	W2014/0661	Hillcrest, Sytch Lane, Waters Upton, Telford, Shropshire, TF6 6NR	FR	0.00	-1

FR - Former Residential FE - Former Employment OB - Other Brownfield GR - Greenfield

Ward Name

	Application No	Address	Previous Use	Hectares	Completed
	W2014/0304	Morgans Barn, Kynnersley, Telford, Shropshire, TF6 6DX	GR	0.00	1
	W2014/0512	White Gates, 4 Crudgington Green, Crudgington, Telford, Shropshire, TF6 6JY	OB	0.00	1
	W2012/0314	Land adjacent The Cleveland Arms, High Ercall, Telford, Shropshire, TF6 6AE	OB	0.00	6
	W2013/0338	The Quarry, Waters Upton, Telford, Shropshire, TF6 6NP	OB	0.00	1
	W2014/0503	1 Sytch Lane, Waters Upton, Telford, Shropshire, TF6 6NT	OB	0.00	1
<i>Great Dawley</i>					
	W2013/0400	Land adjacent to, 33 Church Road, Dawley, Telford, Shropshire	FR	0.00	2
<i>Hadley and Leegomery</i>					
	W2013/0720	Land at, Sommerfeld Road, Hadley, Telford, Shropshire,	FE	0.00	30
	W2014/0571	42 High Street, Hadley, Telford, Shropshire, TF1 5NG	FE	0.00	1
	W2014/0713	91 Beveley Road, Oakengates, Telford, Shropshire, TF2 6SD	FR	0.00	-1
	W2012/0963	Kilarney, Holyhead Road, Ketley, Telford, Shropshire, TF1 5DS	FR	0.00	1
	W2012/0979	1 & 2 South View, Trench Lock, Telford, Shropshire, TF1 5SU	FR	0.27	2
	W2012/0574	Land adjacent 16 Ripley Close, Leegomery, Telford, Shropshire, TF1 6YY	GR	0.00	2
	W2012/0886	Land between 121 & 125, Hadley Park Road, Hadley, Telford, Shropshire,	GR		14
	W2013/0721	Land adjacent Wayside, Horton, Telford, Shropshire,	GR	0.00	1
	W2013/1003	Land at Hadley Park West, (off Okehampton Road), Leegomery, Telford, Shropshire,	GR	0.00	16
<i>Haygate</i>					
	W2012/0103	Land off, Grooms Alley, Wellington, Telford, Shropshire	GR	1.08	19
<i>Horsehay and Lightmoor</i>					
	W2013/0432	1 Pool Hill Road, Horsehay, Telford, Shropshire, TF4 3AU	FR	0.00	1

FR - Former Residential FE - Former Employment OB - Other Brownfield GR - Greenfield

Ward Name

Application No	Address	Previous Use	Hectares	Completed
W2010/0817	Lawley Farm, Dawley Road, Lawley, Telford,	GR	9.37	1
W2011/0093	Lawley Farm, Dawley Road, Lawley, Telford, Shropshire.	GR	0.92	2
W2011/0500	Phase 1, The Croppings, Lightmoor, Telford, Shropshire,	GR	4.90	42
W2011/0506	Land at Lightmoor, Phases 3 & 4, Telford, Shropshire.	GR	2.34	27
W2012/0419	Lawley Phase 6, Dawley Road, Lawley , Telford, Shropshire.	GR	11.05	78
W2009/0716	Land at Lightmoor Way, Lightmoor, Telford Telford.	GR	0.66	2
W2012/0981	The Finney, 13 Burroughs Bank, Lightmoor, Telford, Shropshire, TF4 3QS	OB	0.00	-1

Ironbridge Gorge

W2015/0052	The Coach House, Strethill Road, Coalbrookdale, Telford, Shropshire, TF8 7EY	FR	0.00	1
------------	--	----	------	---

Ketley and Oakengates

W2010/0200	Capewell Works, Sommerfield Road, Trench Lock, Tel	FE	9.53	21
W2014/0849	34 Shrubbery Road, Red Lake, Telford, Shropshire, TF1 5EQ	FR	0.00	1
W2013/0330	17 Vicar Street, Oakengates, Telford, Shropshire, TF2 6BJ	FR	0.00	-1
W2012/0883	Land off, Ketley Park Road, Ketley, Telford, Shropshire, TF1 5BF	GR	0.00	12
W2014/0350	Land adjacent The Croft, Sunnyside Road, Ketley Bank, Telford, Shropshire, TF2 0AA	GR	0.00	1
W2010/0586	4 Woodwell, Red Lake, Telford, Shropshire. TF1 5EA	GR	0.00	1
W2012/0881	Land Off, Ketley Park Road, Ketley, Telford, Shropshire	OB	0.00	86
W2013/0096	Ketley Millennium Village, Holyhead Road, Ketley, Telford, Shropshire	OB	0.00	76
W2013/0561	Plots 39 & 40, 42-46, 48-52, 58-60 & 62, Sommerfeld Road, Trench Lock, Telford, Shropshire,	OB	0.00	12
W2013/0562	Plots, 66, 68, 71 & 76 Sommerfeld Road, Trench Lock, Telford, Shropshire,	OB	0.00	3
W2014/0068	The Laurels, 78A Holyhead Road, Ketley, Telford, Shropshire, TF1 5DJ	OB	0.00	1

FR - Former Residential FE - Former Employment OB - Other Brownfield GR - Greenfield

Ward Name

	Application No	Address	Previous Use	Hectares	Completed
Lawley and Overdale					
	W2010/0561	30 Woodrush Heath, The Rock, Telford, Shropshire,	FR	0.00	2
	W2011/0488	Phases 3 & 4 Lawley Village, Lawley Drive, Lawley, Telford,	GR	25.98	170
	W2013/0700	Lawley Phase 3 & 4, Lawley, Telford, Shropshire,	GR	0.00	3
Madeley					
	W2013/0667	19-24 Coronation Crescent, Madeley, Telford, Shropshire, TF7 5EQ	FR	0.00	-6
	W2014/0679	66 Court Street, Madeley, Telford, Shropshire, TF7 5EP	FR	0.00	-1
	W2014/0080	39 Court Street, Madeley, Telford, Shropshire, TF7 5ED	FR	0.00	-1
	W2014/0080	39 Court Street, Madeley, Telford, Shropshire, TF7 5ED	FR	0.00	2
	W2013/0705	27 Park Street, Madeley, Telford, Shropshire, TF7 5LB	FR	0.00	-1
	W2013/0705	27 Park Street, Madeley, Telford, Shropshire, TF7 5LB	FR	0.00	2
	W2010/0771	9 Park Street, Madeley, Telford, Shropshire, TF7 5	FR	0.00	4
	W2010/0771	9 Park Street, Madeley, Telford, Shropshire, TF7 5	FR	0.00	-1
	W2011/1075	Former ATS Euromaster, Queen Street, Madeley, Telford, Shropshire, TF7 4BH	GR	0.00	1
	W2014/0465	12 High Street Madeley Telford Shropshire TF7 5AQ	OB	0.00	1
Malinslee					
	W2014/0444	Site of 1-8 Eyton Place, Dawley, Telford, Shropshire	FR	0.00	-8
	W2010/0513	The former White Hart, Hinkshay Road, Dawley, Shropshire, TF4 3PA	OB	0.00	11
	W2012/0787	The Former White Hart Inn, Hinkshay Road, Dawley, Telford, Shropshire,	OB	0.00	3
Muxton					
	W2004/0457	FERNLEIGH BUNGALOW, THE FIELDS, DONNINGTON, TELFORD, SHROPSHIRE.	FR	0.06	-1

FR - Former Residential FE - Former Employment OB - Other Brownfield GR - Greenfield

Ward Name

Application No	Address	Previous Use	Hectares	Completed
W2013/0292	Land off, St Matthews Road, Donnington, Telford, Shropshire	GR	0.00	26
W2013/0936	Land off Lodge Road, Donnington Wood, Telford, Shropshire	GR	0.00	-13
W2013/0936	Land off Lodge Road, Donnington Wood, Telford, Shropshire	GR	0.00	25
W2009/0542	Muxton C2/C3, Marshbrook Way, Muxton, Telford, Shropshire.	GR	5.99	2
W2012/0709	C3, C2, Marshbrook Way, Muxton, Telford, Shropshire,	GR	0.87	10
W2010/0199	Land At, Ambleside Way, Donnington Wood, Telford, Shropshire	OB	0.20	2
W2013/0891	Sutherland Arms, Wellington Road, Muxton, Telford, Shropshire, TF2 8NN	OB	0.00	8
Newport East				
W2011/0602	Tan Bank Garage, Tan Bank, Newport, Shropshire, TF10 7LJ	FE	0.00	3
W2012/0211	Land To The Rear Of, Maynards Croft, Newport, Shropshire, TF10 7SZ	GR	0.91	22
Newport South				
W2011/0334	Former Newport Business Park, Audley Road, Newport, Shropshire, TF10 7DP	FE	1.52	35
W2014/0333	Land corner of, Stafford Road/A41, Newport, Shropshire	FE	0.00	2
W2013/1017	30 Upper Bar, Newport, Shropshire, TF10 7EJ	FR	0.00	1
W2013/0870	The Maltings, Springfields, Newport, Shropshire, TF10 7EZ	OB	0.00	2
W2013/0870	The Maltings, Springfields, Newport, Shropshire, TF10 7EZ	OB	0.00	-1
Newport West				
W2013/0768	Beechcroft, Upper Bar, Newport, Shropshire, TF10 7AP	FR	0.00	4
W2013/0928	Phase 1, Land off Wellington Road, Newport, Shropshire	GR	0.00	20
W2013/0449	Land to the rear of Chauffeured Classic Cars, 2A Lower Bar, Newport, Shropshire, TF10 7BQ	OB	0.00	1
W2013/0490	Smallwood Lodge Tearooms, Upper Bar, Newport, Shropshire, TF10 7AP	OB	0.00	-1

FR - Former Residential FE - Former Employment OB - Other Brownfield GR - Greenfield

Ward Name	Application No	Address	Previous Use	Hectares	Completed
Park					
	W2012/0942	Land between 8 & 16, Hordley Road, Wellington, Telford, Shropshire	GR	0.00	4
Priorslee					
	W2012/0587	Redhill Clay Pit, Redhill Way, St Georges, Telford, Shropshire,	OB	1.00	47
	W2013/0448	The Nyth, Moss Road, Wrockwardine Wood, Telford, Shropshire, TF2 7BL	OB	0.00	-2
St Georges					
	W2013/0208	Land at Furnace Road, Telford, Shropshire	OB	0.00	23
St. Georges					
	W2014/0130	Nolum, Station Hill, St Georges, Telford, Shropshire, TF2 9AB	FR	0.00	1
The Nedge					
	W2014/0940	Site of Hollinswood Local Centre, Hollinswood, Telford, Shropshire	FR	0.00	-3
Woodside					
	W2009/0051	Land at, Park Lane, Woodside, Telford, Shropshire.	OB	4.23	40
Wrockwardine					
	W2011/0390	Land adjacent to No 5, Bostock Close, Admaston, Shropshire, TF5 0AG	GR	0.00	1
	W2012/0508	Land to the rear of Orchard House, Bratton Road, Admaston, Telford, Shropshire, TF5 0AQ	GR	0.00	1
	W2009/0491	Longden Mill Farm Barns, Longdon-On-Tern, Shropshire.	GR	0.21	3
	W2011/0352	Land at Broomfield House Farm, Allscott, Shropshire, Telford, TF6 5EQ	OB	0.00	1
	W2012/0359	39 Coalmoor Lane, Coalmoor, Telford, Shropshire, TF4 3QB	OB	0.00	0
	W2014/0206	Wrockwardine Cottage, 16 Station Road, Wrockwardine, Telford, Shropshire, TF6 5DG	OB	0.00	1
Wrockwardine Wood and Trench					
	W2014/0794	Site of 3 - 6 Charles Street/3 - 18 Talbot Road, Wrockwardine Wood, Telford, Shropshire	FR	0.00	-20

FR - Former Residential FE - Former Employment OB - Other Brownfield GR - Greenfield

Ward Name	Application No	Address	Previous Use	Hectares	Completed
TOTALS				85.67	1,074

FR - Former Residential FE - Former Employment OB - Other Brownfield GR - Greenfield

Appendix 2 - Residential Sites Under Construction and Plots Started 2014/15

Ward Name	Application	Address	Previous Use	Ha	Total Comp	Comp 14/15	Not Started	Started
FULL GRANTED								
<i>Apley Castle</i>								
	W2013/0997	Land at, Lawton Farm Way, Leegomery, Telford, Shropshire	GR		4	4	4	19
	W2013/0953	Land adjacent, 39 Nightingale Way, Apley, Telford, Shropshire, TF1 6DT	GR	0.00	0	0	0	1
<i>Arleston</i>								
	W2014/0430	Land at 1 Dawley Road, Arleston, Telford, Shropshire	FE	0.00		0	0	7
	W2014/0452	Land Adjacent, Wendouree, High Street, Wellington, Telford, Shropshire, TF1 1JU	FR	0.00		0	0	2
<i>Brookside</i>								
	W2013/0801	112 - 140 & Brookside Youth Club, Beaconsfield, Brookside, Telford, Shropshire, TF3 1NJ	FR	0.42	-37	0	0	18
<i>Church Aston and Lilleshall</i>								
	W2012/0139	Hill Farm House, Land adjacent, Old Farm Lane, Lilleshall, Newport, Shropshire,	GR	0.00	20	20	0	1
	W2014/0418	Land adjacent Muster Hill Barn, Pitchcroft Lane, Woodcote, Newport, Shropshire	GR	0.00	0	0	0	1
	W2013/0312	9 Woodcote, Telford, Shropshire, TF10 9BW	GR			0	0	4
<i>College</i>								
	W2013/1039	45 Victoria Avenue, Wellington, Telford, Shropshire, TF1 1NN	FR	0.00	0	0	0	2
	W2014/1097	Pipeline Merchants Ltd, 23 High Street, Wellington, Telford, Shropshire, TF1 1JW	OB	0.00		0	0	6
	W2014/0970	The Kings Head, 141 High Street, Wellington, Telford, TF1 1JU	OB	0.00		0	0	1
	W2007/0667	Telford Islamic Centre, 88, King Street, Wellington	OB	0.20	0	0	0	1
	W2008/0227	Land at, Urban Gardens, Wellington, Telford, Shropshire.	OB	0.06	0	0	0	3
<i>Cuckoo Oak</i>								
	W2014/0010	Land adjacent Chillcott Drive, Madeley, Telford, Shropshire	GR	0.00	0	0	0	44
<i>Dawley Magna</i>								
	W2014/0376	Land adjacent Wivelsfield, Hamilton Road, Dawley, Telford, Shropshire	FR	0.00	0	0	0	1
	W2014/0360	Land at Heath Hill/Balls Hill, Dawley, Telford, Shropshire	GR	0.00		0	12	10
	W2012/0784	16 Holly Road, Little Dawley, Telford, Shropshire, TF4 3HB	OB	0.00		0	0	4

FR - Former Residential FE - Former Employment OB - Other Brownfield GR - Greenfield

Ward Name	Application	Address	Previous Use	Ha	Total Comp	Comp 14/15	Not Started	Started
Donnington								
	W2014/0413	7 High Mount, Donnington, Telford, Shropshire, TF2 7NL	FR	0.00		0	0	2
	W2014/0905	Site of 26 - 48 The Glebelands & 31 - 47 The Common, Donnington, Telford, Shropshire	FR	0.00		0	20	0
	W2013/0977	Tara, Oakengates Road, Donnington, Telford, Shropshire, TF2 7LQ	GR	0.00		0	0	9
Dothill								
	W2014/0467	Land rear of Haughmond Court, Whitchurch Road, Wellington, Telford, Shropshire	GR	0.00		0	19	0
Edgmond								
	W2014/0718	The Old Brick Yard, Cherrington, Newport, Shropshire	FE	0.00	0	0	0	1
	W2014/0619	Sambrook Manor Farm, Sambrook, Telford, Shropshire, TF10 8AL	FE	0.00		0	0	2
	W2014/0460	West Winds, Birchmoor Lane, Edgmond, Newport, Shropshire, TF10 8LA	FR	0.00	0	0	0	1
	W2014/0981	Swn Y Coed, Tibberton, Newport, Shropshire, TF10 8NN	GR	0.00	0	0	0	1
	W2014/0967	Land Adjacent to 53, Maslan Crescent, Tibberton, TF10 8PB	GR	0.00	0	0	0	1
	W2012/0441	The Finneys Caravan Site, Marsh Road, Edgmond, TF10 8EP	GR			0	0	3
	W2014/0654	5 Manor Road, Edgmond, Newport, Shropshire, TF10 8JS	OB	0.00		0	0	1
Ercall								
	W2013/0938	Land off Holyhead Road, Wellington, Telford, Shropshire, TF6 5AB	GR	0.00	0	0	64	76
	W2013/0265	The Mount, 1 Haygate Road, Wellington, Telford, Shropshire	OB	0.00		0	0	18
Ercall Magna								
	W2007/0986	22, Waters Upton	FR	0.10	-1	0	1	0
	W2014/0743	26 Kynnersley, Telford, Shropshire, TF6 6DY	FR	0.00	0	0	0	1
	W2014/0661	Hillcrest, Sytch Lane, Waters Upton, Telford, Shropshire, TF6 6NR	FR	0.00	0	0	0	1
	W2013/0641	Poultry Farm, Walton Grange, Walton, High Ercall, Shropshire, TF6 6AR	GR	0.00	0	0	0	1
Hadley and Leegomery								
	W2014/0713	91 Beveley Road, Oakengates, Telford, Shropshire, TF2 6SD	FR	0.00		0	0	3
	W2012/0493	Land To The Rear Of 26a-32, Mafeking Road, Hadley, Telford, Shropshire,	FR	0.00		0	0	4
	W2015/0059	Land Adjacent Dairy Farm House, Horton, Telford, Shropshire,	GR	0.00	0	0	0	1
	W2009/0546	5, Castle Street, Hadley, Telford, Shropshire.	GR	0.02	0	0	0	2
	W2014/1084	Land adjacent The Brambles, Horton Lane, Horton, Telford, Shropshire	GR	0.00	0	0	0	1
	W2004/0879	THE OLD POST OFFICE, 27, HIGH STREET, Hadley	OB	0.10	0	0	0	3
	FR - Former Residential	FE - Former Employment	OB - Other Brownfield	GR - Greenfield				

Ward Name	Application	Address	Previous Use	Ha	Total Comp	Comp 14/15	Not Started	Started
Haygate								
	W2014/1098	23 Walker Street, Wellington, Telford, Shropshire, TF1 1BD	OB	0.00		0	0	10
Horsehay and Lightmoor								
	W2014/0408	Land adjacent Greenhurst, 14 St Lukes Road, Doseley, Telford, Shropshire,	FR	0.00		0	0	3
	W2012/0851	Land adjacent to, 34, Wellington Road, Horsehay, Telford, Shropshire.	FR	0.09	0	0	0	1
	W2011/0993	Land adjacent, 4 St Lukes Road, Doseley, Telford, Shropshire, TF4 3BE	GR	0.00	0	0	0	1
	W2014/0525	Land Adjacent to Wellfield Cottage, Lawley Village, Telford, Shropshire	GR	0.00	0	0	0	1
	W2012/0292	Horsehay Limited, Horsehay House, Bridge Road, Horsehay, Telford, Shropshire, TF4 3PY	OB	0.13	2	0	0	5
	W2012/0981	The Finney, 13 Burroughs Bank, Lightmoor, Telford, Shropshire, TF4 3QS	OB	0.00	0	0	0	1
Ironbridge Gorge								
	W2008/0473	Former Dale End Garage, Dale Road, Coalbrookdale, Telford, Shropshire.	FE	0.17	0	0	0	4
	W2011/0505	Land Adjacent To, 15 Woodside, Coalbrookdale, Telford, Shropshire, TF8 7ED	GR		0	0	0	1
	W2014/0624	Former Dale End Garage, Dale End, Coalbrookdale, Telford, Shropshire	OB	0.00	0	0	0	3
	W2014/0782	Land at 6 Strethill Road, Coalbrookdale, Telford, Shropshire, TF8 7DP	OB	0.00	0	0	0	1
Ketley and Oakengates								
	W2007/1651	Land adjacent to, 62, Hartshill, Oakengates	FR	0.10	0	0	0	1
	W2013/0330	17 Vicar Street, Oakengates, Telford, Shropshire, TF2 6BJ	FR	0.00	0	0	0	1
	W2011/1037	The Walker Institute, Hartsbridge Road, Oakengates, Telford, Shropshire, TF2 6BA	GR	0.43	6		0	8
	W2011/1046	Land adjacent to, 43 West Road, Ketley Bank, Telford, Shropshire, TF2 0DJ	GR	0.00	0	0		1
	W2012/0937	Land adjacent, 1 The Cloisters, Wombridge, Telford, Shropshire	GR	0.00		0	0	1
	W2013/0422	Land adjacent to, Churchill Drive, Ketley Bank, Telford, Shropshire, TF2 0BT	GR	0.00	0	0	0	14
	W2013/0995	Maddocks Sports & Social Club, Church Street, Oakengates, Telford, Shropshire, TF2 6BP	OB	0.00		0	0	38
	W2013/0562	Plots, 66, 68, 71 & 76 Sommerfeld Road, Trench Lock, Telford, Shropshire,	OB	0.00	3	4	0	1
	W2013/0561	Plots 39 & 40, 42-46, 48-52, 58-60 & 62, Sommerfeld Road, Trench Lock, Telford, Shropshir	OB	0.00	12	12	0	4
	W2013/0096	Ketley Millennium Village, Holyhead Road, Ketley, Telford, Shropshire	OB	0.00	76	76	273	26
	W2009/0215	3, Holyhead Road, Oakengates, Telford, Shropshire.	OB	0.07	0	0	0	2
	W2011/0769	The Homelands, Mossey Green, Ketley Bank, Telford, Shropshire, TF2 0DN	OB		0	0	0	10
	W2013/0563	Plots 1-11, Sommerfeld Road, Trench Lock, Telford, Shropshire	OB			0	0	11

FR - Former Residential FE - Former Employment OB - Other Brownfield GR - Greenfield

Ward Name	Application	Address	Previous Use	Ha	Total Comp	Comp 14/15	Not Started	Started
Lawley and Overdale								
	W2012/0890	Land adjacent Windy Ridge, Rock Road, The Rock, Ketley, Telford, Shropshire	FR	0.00	0	0	0	1
	W2006/0818	Land adjacent, 3, Station Road, Lawley Bank	OB	0.20	0	0	0	1
Madeley								
	W2011/0960	Land to rear of , 25 Coronation Crescent, Madeley, Telford, Shropshire, TF7 5EQ	FR	0.00	0	0	0	5
	W2013/0667	19-24 Coronation Crescent, Madeley, Telford, Shropshire, TF7 5EQ	FR	0.00	0	0	0	11
	W2013/0917	Land adjacent, 2 Wrekin View, Madeley, Telford, Shropshire, TF7 5HY	GR	0.00	0	0	0	2
	W2014/0338	Telford & Wrekin NHS Primary Care Trust, 66 - 67 High Street, Madeley, Telford, Shropshire,	OB	0.00	0	0	0	2
	W2013/0019	13 High Street, Madeley, Telford, Shropshire, TF7 5AQ	OB	0.00	0	0	0	1
Malinslee								
	W2014/0444	Site of 1-8 Eyton Place, Dawley, Telford, Shropshire	FR	0.00	0	0	0	13
	W2008/0302	Land at the junction of, King Street, Dawley, Telford, Shropshire.	OB	0.10	2	2	8	0
Muxton								
	W2014/0451	Land to rear of, 49, 51, 53, 55, 57, 59 & 61 Muxton Lane, Muxton, Telford, Shropshire	FE		0	0	0	5
	W2013/0321	Fernleigh, The Fields, Donnington, Telford, Shropshire, TF2 7PW	FR	0.00	0	0	0	1
Newport East								
	W2013/0353	Land adjacent, 31 Water Lane, Newport, Shropshire, TF10 7LD	GR	0.00	0	0	0	1
Newport South								
	W2014/0333	Land corner of, Stafford Road/A41, Newport, Shropshire	FE	0.00	2	2	93	16
	W2011/0334	Former Newport Business Park, Audley Road, Newport, Shropshire, TF10 7DP	FE	1.52	49	35	0	12
	W2014/0069	Site of 27 and land adjacent, Upper Bar, Newport, Shropshire	FR	0.06	0	-1	0	6
Newport West								
	W2014/0006	Hesbrooks HGV Yard, Avenue Road, Newport, Shropshire, TF10 7EA	FE	0.00	0	0	0	6
	W2013/0076	87, 89 and 91 High Street, Newport, Shropshire, TF10 7AY	OB	0.00	0	0	0	14
	W2011/0354	23 High Street, Newport, Shropshire TF10 7AT	OB	0.00	0	0	6	0
Priorslee								
	W2014/0526	Land off, St Georges Bypass, Snedshill Way, St Georges, Telford	GR	0.00		0	45	0
	W2012/0243	The Hollies, Priorslee Village, Telford, Shropshire, TF2 9NW	GR		0	0	1	1

FR - Former Residential

FE - Former Employment

OB - Other Brownfield

GR - Greenfield

Ward Name	Application	Address	Previous Use	Ha	Total Comp	Comp 14/15	Not Started	Started
St. Georges								
	W2014/0130	Nolum, Station Hill, St Georges, Telford, Shropshire, TF2 9AB	FR	0.00		0	0	1
	W2012/0993	Land adjacent 80, Freeston Avenue, St Georges, Telford, Shropshire,	GR	0.00	0	0	1	1
	W2013/0053	Land adjacent, 14 The Nabb, St Georges, Telford, Shropshire, TF2 9BY	GR	0.00	0	0	0	3
The Nedge								
	W2009/0326	Randlay Centre, Randlay Community Centre, Randlay, Telford, Shropshire.	OB	1.41	6	0	12	0
Woodside								
	W2014/0168	Land at, Park Lane, Woodside, Telford, Shropshire,	FR	0.00		0	5	0
	W2014/0289	Land opposite Park Lane Centre, Park Lane, Woodside, Telford, Shropshire	GR	0.00	0	0	0	14
	W2011/1001	Land between, 46 & 47C Park Lane, Woodside, Telford, Shropshire,	OB	0.00	0	0	0	2
	W2009/0051	Land at, Park Lane, Woodside, Telford, Shropshire.	OB	4.23	101	40	32	48
Wrockwardine								
	W2013/0763	Land adjacent Dovecote Grange, Bratton Road, Bratton, Telford, Shropshire, TF5 0BT	GR		0	0	0	1
	W2013/0649	Land to rear of Holly Acres, Long Lane, Telford, Shropshire TF6 6HD	GR	0.00		0	0	12
	W2011/0352	Land at Broomfield House Farm, Allscott, Shropshire, Telford, TF6 5EQ	OB	0.00	1	1	0	1
Wrockwardine Wood and Trench								
	W2014/0794	Site of 3 - 6 Charles Street/3 - 18 Talbot Road, Wrockwardine Wood, Telford, Shropshire	FR	0.00	-20	0	22	0
	W2014/0699	Land Adjacent to 1 Talbot Close, Wrockwardine Wood, Telford, Shropshire	GR	0.00	0	0	0	4
	W2011/1060	1 Greenlea Road, Trench, Telford, Shropshire, TF2 6PZ	GR	0.00	0	0	0	1
					226	195	618	592
OUTLINE GRANTED								
Horsehay and Lightmoor								
	W2002/0392	Land at Lightmoor, Telford	OB	79.20	0	0	320	0
Lawley and Overdale								
	W2004/0980	LAND AT, LAWLEY, The Rock	GR	157.50	0	0	2294	0
					0	0	2614	0
RESERVE MATTERS GRANTED								

FR - Former Residential FE - Former Employment OB - Other Brownfield GR - Greenfield

Ward Name	Application	Address	Previous Use	Ha	Total Comp	Comp 14/15	Not Started	Started
Ercall								
	W2011/1033	Land adjoining, 313, Holyhead Road, Wellington, Telford, Shropshire.	FR	0.05	0	0	1	1
Ercall Magna								
	W2014/0987	Site of The Swan, Waters Upton, Telford, Shropshire	OB			0	0	5
Wrockwardine								
	W2008/0587	Plot 3, Land off, Elmsdale Crescent, Admaston, Telford, Shropshire.	GR	0.16	0	0	0	1
					0	0	1	7
RESERVED MATTERS GRANTED								
Church Aston and Lilleshall								
	W2014/0437	Phase 2, land south east of Grove Farm, Wellington Road, Newport, Shropshire	FE	0.00	0	0	14	19
Edgmond								
	W2014/0401	Land adjacent Ingleside, 1 Edgmond Road, Newport, Shropshire	GR	0.00		0	80	5
Ercall								
	W2013/0934	Land adjacent, 137 Haygate Road, Wellington, Telford, Shropshire, TF1 2DA	GR	0.00	0		0	1
Ercall Magna								
	W2014/0527	Land adjacent 34 Waters Upton, Telford, Shropshire	GR	0.00	1	1	0	0
Hadley and Leegomery								
	W2013/0720	Land at, Sommerfeld Road, Hadley, Telford, Shropshire,	FE	0.00	30	30	69	26
	W2014/0769	Land Off, Hadley Park West, Hadley, Telford, Shropshire	GR	0.00		0	49	19
	W2014/0221	Former Blockleys Brick Ltd, Land off Sommerfeld Road, Trench Lock, Telford, Shropshire, T	GR	0.00		0	54	6
	W2013/1003	Land at Hadley Park West, (off Okehampton Road), Leegomery, Telford, Shropshire,	GR	0.00	16	16	87	42
	W2014/0796	Land North of, Okehampton Road, Leegomery, Telford, Shropshire	GR	0.00		0	44	16
Horsehay and Lightmoor								
	W2014/0258	Land adjacent Lightmoor View, Brick Kiln Bank, Lightmoor, Telford, Shropshire	FE		0	0	61	11
	W2011/0500	Phase 1, The Croppings, Lightmoor, Telford, Shropshire,	GR	4.90	92	42	0	13
	W2011/0506	Land at Lightmoor, Phases 3 & 4, Telford, Shropshire.	GR	2.34	29	27	7	30
	W2012/0419	Lawley Phase 6, Dawley Road, Lawley , Telford, Shropshire.	GR	11.05	161	78	159	68
	W2014/0237	Land at Doseley Works, Doseley, Telford, Shropshire, TF4 3BX	GR	0.00		0	192	0
	FR - Former Residential	FE - Former Employment	OB - Other Brownfield	GR - Greenfield				

Ward Name	Application	Address	Previous Use	Ha	Total Comp	Comp 14/15	Not Started	Started
<i>Ketley and Oakengates</i>								
	W2010/0200	Capewell Works, Sommerfield Road, Trench Lock, Tel	FE	9.53	162	21	14	9
	W2011/0852	Capewell Works, Sommerfield Road, Trench Lock, Telford, Shropshire,	GR	9.26	12	0	2	0
<i>Lawley and Overdale</i>								
	W2011/0488	Phases 3 & 4 Lawley Village, Lawley Drive, Lawley, Telford,	GR	25.98	351	170	34	50
<i>Newport West</i>								
	W2013/0928	Phase 1, Land off Wellington Road, Newport, Shropshire	GR	0.00	20	20	2	39
<i>Priorslee</i>								
	W2012/0587	Redhill Clay Pit, Redhill Way, St Georges, Telford, Shropshire,	OB	1.00	77	47	16	15
					951	452	884	369
TOTALS				310.38	1,177	647	4,117	968

FR - Former Residential FE - Former Employment OB - Other Brownfield GR - Greenfield

Appendix 3 - Residential Sites with Plots Not Started 2014/15

Ward Name	Application No	Address	Previous Use	Hectares	Not Started
FULL GRANTED					
<i>Apley Castle</i>					
	W2012/0453	8 Greenfinch Close, Apley, Telford, Shropshire, TF1 6FY	GR	0.00	1
	W2013/0997	Land at, Lawton Farm Way, Leegomery, Telford, Shropshire	GR		4
<i>Arleston</i>					
	W2012/0069	Ercall Wood Technology College, Golf Links Lane, Wellington, Telford, Shropshire, TF1 2DT	EDU	0.00	80
	W2012/0240	Land at, Arleston, Telford, Shropshire	GR		153
<i>Church Aston and Lilleshall</i>					
	W2009/1015	Church Farm Yard, Preston Upon The Weald Moors, Shropshire.	GR	1.16	20
	W2010/0413	Hoo Hall, The Hoo, Preston, Telford, Shropshire, T	OB	0.00	2
	W2014/0492	Lubstree Park, Humber Lane, Telford, Shropshire, TF2 8LW	FE	0.00	8
	W2014/0857	Land adjacent 35 Littlehales Road, Chetwynd Aston, Newport, Shropshire	GR	0.00	1
	W2014/0984	Land Adjacent to 55 Pave Lane, Newport, Shropshire, TF10 9LQ	GR	0.00	1
	W2015/0046	Hinks Farm Barn, Kynnersley Drive, Lilleshall, Newport, Shropshire, TF10 9HT	OB	0.00	1
	W2015/0048	Former Coach House adjoining 1 Field Aston Manor Barns, Field Aston Lane, Field Aston, N	OB	0.00	1
<i>College</i>					
	W2013/1028	Land adjacent Mill Cottage, Mill Lane, Wellington, Telford, Shropshire	GR	0.00	4
	W2010/0487	Charlton Arms Hotel, Church Street, Wellington, Telford, Shropshire, TF1 1DG	OB	0.00	41
	W2013/0306	27-31 High Street, Wellington, Telford, Shropshire, TF1 1JW	OB	0.00	12
<i>Cuckoo Oak</i>					
	W2012/0537	29 Solway Drive, Sutton Hill, Telford, Shropshire, TF7 4JA	FR	0.00	2
<i>Dawley Magna</i>					
	W2013/0017	Unit 5, Holland Court, High Street, Dawley, Telford, Shropshire, TF4 2EX	FE	0.00	1
	W2014/0360	Land at Heath Hill/Balls Hill, Dawley, Telford, Shropshire	GR	0.00	12

FR - Former Residential FE - Former Employment OB - Other Brownfield GR - Greenfield

Ward Name	Application No	Address	Previous Use	Hectares	Not Started
	W2014/0673	Land rear of, 2 Church Walk, Dawley, Telford, Shropshire	GR	0.00	1
	W2011/0052	The Queens Arms, Southall Road, Dawley, Telford TF4 3LY	OB	0.00	4
Donnington					
	W2014/0621	The Acorns, St Georges Road, Donnington Wood, Telford, Shropshire, TF2 7NJ	FR	0.00	-1
	W2014/0912	70 Furnace Lane, Trench, Telford, Shropshire, TF2 7JE	OB	0.00	1
	W2014/0689	Land adjacent Furnace House Guest House 64 Furnace Lane, Trench, Telford, Shropshire	GR	0.00	1
	W2013/1027	Land corner of Queens Road/Church Road, Donnington, Telford, Shropshire	GR	0.00	9
	W2012/0416	Land Adjacent To, 12 Jubilee Avenue, Donnington, Telford, Shropshire, TF2 8HN	GR	0.00	2
	W2014/0905	Site of 26 - 48 The Glebelands & 31 - 47 The Common, Donnington, Telford, Shropshire	FR	0.00	20
Dothill					
	W2014/0467	Land rear of Haughmond Court, Whitchurch Road, Wellington, Telford, Shropshire	GR	0.00	19
Edgmond					
	W2014/0436	Land West Of Beech Hill, Edgmond Road, Newport, Shropshire	GR	0.00	3
	W2014/0674	Adeney Manor, Adeney, Newport, Shropshire, TF10 8LY	OB	0.00	2
	W2014/0977	Barn adjacent The Birch Moors, Adeney, Newport, Shropshire	FE	0.00	1
	W2014/0953	Land adjacent Grangefields, Hay Street, Tibberton, Newport, Shropshire	GR	0.00	2
	W2014/0909	Land to rear of 2 The Cottage, Cheney Hill, Edgmond Road, Newport, Shropshire	GR	0.00	1
	W2014/0389	54 Newport Road, Edgmond, Newport, Shropshire, TF10 8HE	GR	0.00	1
	W2013/0515	6 Puleston, Newport, Shropshire, TF10 8AF	OB	0.00	1
	W2013/0398	The Workshop, High Street, Edgmond, Newport, Shropshire, TF10 8JW	OB	0.00	0
	W2012/0961	Land at, Orchard House, Tibberton, Newport, Shropshire	GR		10
	W2009/1108	Adeney Manor Farm, Adeney, Shropshire.	OB	0.48	4
	W2014/0808	12 Marsh Road, Edgmond, Newport, Shropshire, TF10 8EP	FR	0.00	1
Ercall					
	W2014/0613	332 Holyhead Road, Wellington, Telford, Shropshire, TF1 2EY	FR	0.00	1
	W2013/0938	Land off Holyhead Road, Wellington, Telford, Shropshire, TF6 5AB	GR	0.00	64

FR - Former Residential FE - Former Employment OB - Other Brownfield GR - Greenfield

Ward Name	Application No	Address	Previous Use	Hectares	Not Started
Ercall Magna	W2014/0153	Former Telford & Wrekin Council Offices, Highfield House, 47 Wrekin Road, Wellington, Telf	FE	0.00	14
	W2014/0733	Land South of White House Farm, Cold Hatton, Telford, Shropshire	GR	0.00	2
	W2014/0722	Land adjacent Kynnersley Manor, Kynnersley, Telford, Shropshire, TF6 6DY	FE	0.00	2
	W2013/0693	Land adjacent to 8 Heath Court, Cliff Crescent, Ellerdine, Telford, Shropshire	GR	0.00	12
	W2013/0273	Lyndale, Middle Lane, Cold Hatton, Telford, Shropshire, TF6 6QA	OB	0.00	0
	W2013/0036	Brookwood, Crudgington Green, Crudgington, Shropshire, TF6 6JY	OB	0.00	1
	W2007/0986	22, Waters Upton	FR	0.10	1
	W2014/0993	The Firs, Rowton, Telford, Shropshire, TF6 6QY	FR	0.00	1
	W2011/0923	Lower House Farm, Waters Upton, Telford, Shropshire, TF6 6PB	GR	0.00	2
Hadley and Leegomery	W2014/0926	46 Horton Lane, Horton, Telford, Shropshire, TF6 6DT	FR	0.00	3
	W2014/1059	Land adjacent Fine Foods, 79 & Thiaras Fish Bar, 89 Haybridge Road, Hadley, Telford, Shro	GR	0.00	2
	W2014/0765	1-3 Castle Lane, Hadley, Telford, Shropshire, TF1 6RD	FR	0.00	11
	W2011/0357	Land at 82 Beveley Road, Oakengates, Telford, Shropshire, TF2 6SD	GR	0.00	0
	W2013/1006	Land adjacent 32 Victoria Court, Hadley, Telford, Shropshire	GR	0.00	1
Haygate	W2013/0915	Land adjacent, The Birches, 57 Wrockwardine Road, Wellington, Telford, Shropshire, TF1 3D	GR	0.00	1
	W2014/0088	Land adjacent to The Croft, Haygate Road, Wellington, Telford, Shropshire, TF1 2BW	GR	0.00	1
Horsehay and Lightmoor	W2014/0559	Woodlands Farm, Woodlands Lane, Horsehay, Telford, Shropshire, TF4 3QF	FE	0.00	4
	W2012/0301	Land adjacent Greenhurst, 14 St Lukes Road, Doseley, Telford, Shropshire, TF4 3BD	GR	0.00	1
	W2014/0182	1 Glendale, Lawley Village, Telford, Shropshire, TF4 2PJ	FR	0.00	1
Ironbridge Gorge	W2012/0485	Land Adjacent To, Humay, Hodge Bower, Ironbridge, Telford, Shropshire, TF8 7QQ	GR	0.00	1
	W2014/0648	Woodside House Barns, Woodside, Coalbrookdale, Telford, Shropshire, TF8 7ED	FE	0.00	1

FR - Former Residential FE - Former Employment OB - Other Brownfield GR - Greenfield

Ward Name	Application No	Address	Previous Use	Hectares	Not Started
	W2014/0455	Woodlands Farm, Beech Road, Ironbridge, Telford, Shropshire, TF8 7PA	FE	0.00	1
	W2014/0445	Land Adjacent Old Wynd House, Crackshall Lane, Coalbrookdale, Telford, Shropshire, TF8 7	GR	0.00	1
	W2014/0212	The Grove Inn, Wellington Road, Coalbrookdale, Telford, Shropshire, TF8 7DX	OB	0.00	8
	W2014/0191	15 Jockey Bank, Ironbridge, Telford, Shropshire, TF8 7PD	OB	0.00	3
	W2013/0665	Land adjacent to, Puddleduck Cottage, 234 Salthouse Road, Jackfield, Telford, Shropshire, T	GR	0.00	2
	W2014/0871	6 The Square, Ironbridge, Telford, Shropshire, TF8 7AQ	OB	0.00	1
	W2013/0961	Garage/annex adjacent to, Laburnum Cottage, Woodlands Road, Ironbridge, Telford, Shrops	FR	0.00	1
<i>Ketley and Oakengates</i>					
	W2013/0222	7 Oxford Street, Oakengates, Shropshire	FE	0.20	1
	W2011/0809	Hi View, Old Park Road, Ketley Bank, Telford, Shropshire, TF2 0DG	GR	0.00	1
	W2012/0358	Land between 44 & 45 Sandbrook, Ketley, Telford, Shropshire	GR	0.00	2
	W2012/0425	Grasmere, Red Lees, Ketley, Telford, Shropshire, TF1 5DE	GR	0.00	1
	W2013/0096	Ketley Millennium Village, Holyhead Road, Ketley, Telford, Shropshire	OB	0.00	273
	W2014/0094	Land adjacent, 9 Weavers Rise, Ketley Bank, Telford, Shropshire	GR	0.00	1
	W2014/0261	Land north of Industry Nightclub, off Chapel Street, Oakengates, Telford, Shropshire	GR	0.00	3
	W2014/0327	Woodruff, Shrubbery Road, Red Lake, Telford, Shropshire, TF1 5EQ	FR	0.00	1
	W2014/0531	Land to the rear of Bush House, Mossey Green, Ketley Bank, Telford, Shropshire	GR	0.00	1
	W2014/0690	Land between 29 & 33 Station Road, Ketley, Telford, Shropshire	GR	0.00	2
	W2014/1058	Land rear of 8 Ketley Vallens, Ketley, Telford, Shropshire	GR	0.00	3
	W2014/1067	Former 17-19 Stafford Road, Oakengates, Telford, Shropshire, TF2 6JH	FE	0.00	2
	W2012/0764	7 Hartshill Avenue, Oakengates, Telford, Shropshire, TF2 6AR	GR	0.00	1
<i>Lawley and Overdale</i>					
	W2014/0882	Land off Park Road/Royal Way, Malinslee, Telford, Shropshire	GR	0.00	93
	W2014/0598	Upway Cottage, 51 The Rock, Telford, Shropshire, TF3 5BH	FR	0.00	1
	W2011/0435	Land at 29 Clares Lane Close, The Rock, Telford, Shropshire, TF3 5DA	GR	0.00	1

FR - Former Residential FE - Former Employment OB - Other Brownfield GR - Greenfield

Ward Name	Application No	Address	Previous Use	Hectares	Not Started
<i>Madeley</i>					
	W2013/0469	Upper House, Church Street, Madeley, Telford, Shropshire, TF7 5BW	FE	0.00	8
	W2013/0325	Lee Dingle, 48 Lees Farm Drive, Madeley, Telford, Shropshire, TF7 5SU	FR	0.00	-1
<i>Malinslee</i>					
	W2008/0302	Land at the junction of, King Street, Dawley, Telford, Shropshire.	OB	0.10	8
	W2010/0283	Land off, Arden Avenue, Dawley, Telford, Shropshir	FR	0.03	1
	W2014/0329	Land adjacent Yeatesville, 15 St. Leonards Road, Malinslee, Telford, Shropshire	GR	0.00	1
<i>Muxton</i>					
	W2014/0846	Granville Farm, Grange Lane, Redhill, Telford, Shropshire, TF2 9PA	FE	0.00	8
	W2014/1056	Site of The Cottage, Wellington Road, Muxton, Telford, Shropshire	FR	0.00	0
	W2014/0934	Land adjacent Manderla, 7 Bradley Road, Donnington, Telford, Shropshire	GR	0.00	1
<i>Newport North</i>					
	W2014/0204	Land To The Rear Of, Nix Service Station, Forton Road, Newport, Shropshire, TF10 7JR	GR	0.00	7
	W2014/0036	Kings Head Mobile Home Park, Green Lane, Newport, Shropshire	GR	0.00	8
<i>Newport South</i>					
	W2014/0333	Land corner of, Stafford Road/A41, Newport, Shropshire	FE	0.00	93
<i>Newport West</i>					
	W2011/0354	23 High Street, Newport, Shropshire TF10 7AT	OB	0.00	6
	W2012/1014	6, Midgley Court, High Street, Newport, Shropshire, TF10 7BG	FE	0.00	3
	W2013/0574	45 Wrekin Avenue, Newport, Shropshire, TF10 7HQ	FR	0.00	1
	W2014/1076	Land rear of 28 Beaumaris Road, Newport, Shropshire	GR	0.00	2
<i>Park</i>					
	W2011/0347	Richmond House, Donnerville Gardens, Admaston, Telford, Shropshire, TF5 0DE	GR	0.00	4
	W2014/0383	The Centre for Positive Health, 11-13 Whitchurch Road, Wellington, Telford, TF1 3DS	OB	0.00	9
<i>Priorslee</i>					
	W2012/0243	The Hollies, Priorslee Village, Telford, Shropshire, TF2 9NW	GR		1

FR - Former Residential FE - Former Employment OB - Other Brownfield GR - Greenfield

Ward Name	Application No	Address	Previous Use	Hectares	Not Started
St. Georges	W2010/0152	Redhill Clay Pit, Redhill Way, St Georges, Telford, Shropshire	GR	0.00	120
	W2012/0862	Land to rear of, Erindale, Moss Road, Wrockwardine Wood, Telford, Shropshire.	FR	0.18	4
	W2014/0526	Land off, St Georges Bypass, Snedshill Way, St Georges, Telford	GR	0.00	45
	W2013/0448	The Nyth, Moss Road, Wrockwardine Wood, Telford, Shropshire, TF2 7BL	OB	0.00	12
St. Georges	W2013/0642	The Fountain Inn Car Park, New Road, Wrockwardine Wood, Telford, Shropshire	OB	0.00	2
	W2014/0736	The Red Lion Inn, New Road, Wrockwardine Wood, Telford, Shropshire, TF2 7AA	OB	0.00	4
	W2012/0465	Land adjacent, The Trees Bungalow, The Nabb, St Georges, Telford, Shropshire, TF2 9BU	GR	0.00	1
	W2006/0927	TAFS, GOWER STREET, ST GEORGES, TELFORD, SHROPSHIRE.	FE	3.53	165
	W2014/0386	Merrington, Moss Road, Wrockwardine Wood, Telford, Shropshire	FR	0.00	1
	W2015/0116	Land adjacent, 2 Moss Road, Wrockwardine Wood, Telford, Shropshire	GR	0.35	2
	W2012/0993	Land adjacent 80, Freeston Avenue, St Georges, Telford, Shropshire,	GR	0.00	1
	W2014/0680	Land opposite Blencathra, Rocfield Terrace, Lincoln Road, Wrockwardine Wood, Telford, Shr	GR	0.00	1
The Nedge	W2014/1122	Land junction of Stirchley Avenue/Randlay Avenue, Randlay, Telford, Shropshire	GR	0.00	31
	W2009/0326	Randlay Centre, Randlay Community Centre, Randlay, Telford, Shropshire.	OB	1.41	12
	W2014/0047	Land adjacent 103 Boulton Grange, Randlay, Telford, Shropshire,	GR	0.00	1
Woodside	W2014/1124	Former Woodlands Primary School, Ironbridge Road, Madeley, Telford, Shropshire	EDU	0.00	101
	W2014/0168	Land at, Park Lane, Woodside, Telford, Shropshire,	FR	0.00	5
	W2013/0920	Land adjacent Police Houses, 2 Park Lane, Woodside, Telford, Shropshire	GR	0.00	1
	W2010/0259	Rough Park House, Woodside Avenue, Woodside, Telford	OB	0.00	23
	W2009/0051	Land at, Park Lane, Woodside, Telford, Shropshire.	OB	4.23	32
Wrockwardine	W2015/0118	Site of The Hill Farm, Isombridge Lane, Longdon On Tern, Telford, Shropshire	FE	0.00	1
	W2013/0879	Land adjacent Millcroft, Walcot, Telford, Shropshire, TF6 5ER	GR	0.00	1

FR - Former Residential FE - Former Employment OB - Other Brownfield GR - Greenfield

Ward Name	Application No	Address	Previous Use	Hectares	Not Started
	W2015/0024	The Piggeries, Grove Lane, Rodington, Telford, Shropshire	FE	0.00	1
	W2014/0065	Land adjacent, 10 Rushmoor, Telford, Shropshire	GR	0.00	2
	W2012/0504	Villa Farm, Grove Lane, Rodington, Shropshire, SY4 4QP	OB	0.00	2
	W2014/0429	A B C Day Nursery, The Village School, Wrockwardine, Telford, Shropshire, TF6 5DG	EDU	0.00	4
	W2014/0570	Land West of Loft House Barn, Rodington, Telford, Shropshire	GR	0.00	2
	W2014/0575	Land adjacent 21, Allscott, Telford, Shropshire	GR	0.00	1
	W2014/0989	3 Charlton, Wrockwardine, Telford, Shropshire, TF6 5EU	FR	0.00	1
	W2014/0615	Land Adj. Raven Cottage, Isombridge Lane, Longdon-upon-Tern, Telford, TF6 6LH	GR	0.00	1
	W2014/0662	Brook Lodge, Arleston Lane, Arleston, Telford, Shropshire, TF1 2JY	FR	0.00	1
	W2010/0017	Land at, Isombridge Farm, Isombridge, Shropshire.	GR	0.09	1
Wrockwardine Wood and Trench					
	W2011/1065	Burton House, Plough Road, Wrockwardine Wood, Telford, Shropshire, TF2 7AR	OB	0.00	1
	W2011/0434	Land Adjacent 1 Furnace Lane, Trench, Shropshire, TF2 7JX	GR	0.00	2
	W2014/0794	Site of 3 - 6 Charles Street/3 - 18 Talbot Road, Wrockwardine Wood, Telford, Shropshire	FR	0.00	22
Borough				11.865	1724
FULL REFUSED					
Ercall Magna					
Appeal Allowe	W2008/0059	TERN FARM, LONGDON-ON-TERN	GR	1.01	7
Borough				1.0124	7

FR - Former Residential FE - Former Employment OB - Other Brownfield GR - Greenfield

Ward Name	Application No	Address	Previous Use	Hectares	Not Started
OUTLINE GRANTED					
<i>Apley Castle</i>					
	W2011/0541	Land off, Peregrine Way, Leegomery	OB	9.10	100
<i>Arleston</i>					
	W2012/0547	20 Arleston Village, Arleston, Telford, Shropshire, TF1 2LX	FR	0.00	1
	W2012/0337	Wendouree, High Street, Wellington, Telford, Shropshire, TF1 1JU	OB	0.00	1
	W2013/0091	Land between 5 and 6 Forester Grove, Arleston, Telford, Shropshire	FR	0.00	4
	W2012/0548	20 Arleston Village, Arleston, Telford, Shropshire, TF1 2LX	FR	0.00	1
<i>Church Aston and Lilleshall</i>					
	W2014/0271	Land adjacent 9 Hillside, Lilleshall, Newport, Shropshire	GR	0.00	2
	W2014/0415	Land adjacent The Knoll, Church Aston, Newport, Shropshire	FE	0.00	17
	W2014/0273	Land adjacent The Barns, Church Aston, Newport, Shropshire	GR	0.00	26
	W2014/0196	Land Adj. to St. Lawrence Church, Preston, Telford, Shropshire, TF6 6DH	GR	0.00	1
	W2014/0655	Land adjacent 9A Humber Lane, Telford, Shropshire, TF2 8LP	GR	0.00	1
	W2014/0288	Land adjacent Mount View, Hillside East, Lilleshall, Newport, Shropshire	FR	0.00	1
	W2014/0716	Land adjacent Middle Farm, Off Field Aston Lane, Newport, Shropshire	GR	0.00	5
	W2014/0768	Endeavor, 63 Limekiln Lane, Lilleshall, Newport, Shropshire, TF10 9EY	FR	0.00	1
	W2014/0964	Land adjacent 13 Primrose Drive, Church Aston, Newport, Shropshire	GR	0.00	1
	W2015/0030	Land between Preston Cottage 15 & Village Farm, Preston, Upon The Weald Moors, Telford,	FE	0.00	1
	W2015/0089	Site of 5 Humber Lane, Preston Upon The Weald Moors, Telford, Shropshire	FR	0.00	1
	W2014/0610	Land adjacent Village Farm, Preston, Telford, Shropshire	GR	0.00	1
<i>College</i>					
	W2012/0200	125 King Street, Wellington, Telford, Shropshire, TF1 1NX	FE	0.00	13
<i>Dawley Magna</i>					
	W2015/0121	Site of 33 Portley Road, Dawley, Telford, Shropshire	FR	0.00	1
	W2009/0914	Land at, Southwater, St Quentin Gate, Telford Town Centre, Telford, Shropshire.	OB		330

FR - Former Residential FE - Former Employment OB - Other Brownfield GR - Greenfield

Ward Name	Application No	Address	Previous Use	Hectares	Not Started
<i>Donnington</i>					
	W2013/0719	29 Queens Road, Donnington, Telford, Shropshire, TF2 8DA	FR	0.00	4
	W2014/0139	Land part of The Old Lodge, School Road, Donnington, Telford, Shropshire	FR	0.00	2
	W2014/0176	Land Adjacent Copperlea, 2 Wrekin Drive, Donnington, Telford, Shropshire, TF2 8DP	GR	0.00	6
<i>Edgmond</i>					
	W2014/1011	Site of 2 Sambrook, Newport, Shropshire	FR	0.00	1
	W2014/1074	Land adjacent 48 Shrewsbury Road, Edgmond, Newport, Shropshire	GR	0.00	2
	W2014/0705	Plot 2, Plantation Road, Tibberton, Newport, Shropshire, TF10 8PD	FR	0.00	1
	W2014/1102	Site of 27 Cherrington, Newport, Shropshire	FR	0.00	0
	W2014/1119	Land adjacent, 81 Newport Road, Edgmond, Newport, Shropshire	GR	0.00	1
	W2015/0020	Land south of 18 Cherrington, Newport, Shropshire	FE	0.00	1
	W2014/0653	Land adjacent, 56 Shrewsbury Road, Edgmond, Newport, Shropshire	GR	0.00	2
	W2014/0381	Land adjacent 10 Chetwynd Road, Edgmond, Newport, Shropshire, TF10 8HJ	GR	0.00	1
	W2014/0230	Land at Back Lane/Plantation Road, Tibberton, Newport, Shropshire, TF10 8NX	GR		26
	W2014/0115	Land between Beech Hill & Blue House Barns, Chetwynd Road, Newport, Shropshire	FE	0.00	19
	W2013/0379	Land adjacent 46 Tibberton, Shropshire, TF10 8NY	GR	0.00	2
	W2014/0391	Land North Of The Lilacs, Longwithy Lane, Edgmond, Newport, Shropshire, TF10 8EJ	GR	0.00	1
<i>Ercall</i>					
	W2011/0002	Cartridge World & Plumbing Centre, Alexandra Road, Wellington, Telford, Shropshire, TF1 1	FE	0.00	18
	W2013/0032	17 Ercall Gardens, Wellington, Telford, Shropshire, TF1 1RD	GR	0.00	1
<i>Ercall Magna</i>					
	W2014/1099	Land adjacent/rear of Chris Cottage & Nichol House, Rowton, Telford, Shropshire	FE	0.00	2
	W2014/0523	Land adjacent Roden Hall, site of Llanhaven & The Bungalow, Roden Lane, Roden, Telford,	FR	0.00	2
<i>Hadley and Leegomery</i>					
	W2013/0567	Caravan And Camping Centre, Stadium Way, Hadley, Telford, Shropshire, TF1 5NN	OB	0.00	14
	W2012/0401	Land to the side of 64 Mafeking Road, Hadley, Telford, Shropshire, TF1 5LB	GR	0.00	2

FR - Former Residential FE - Former Employment OB - Other Brownfield GR - Greenfield

Ward Name	Application No	Address	Previous Use	Hectares	Not Started
<i>Horsehay & Lightmoor</i>					
	W2012/0926	Land off Lightmoor Way, Horsehay, Telford, Shropshire	OB		200
<i>Horsehay and Lightmoor</i>					
	W2014/0081	Acorn Cottage, 36 Lawley Gate, Lawley, Telford, Shropshire, TF4 2NZ	GR	0.00	1
	W2002/0392	Land at Lightmoor, Telford	OB	79.20	320
	W2012/0650	Doseley Works, Doseley, Telford, Shropshire, TF4 3BX	OB		268
	W2013/0902	Hughes Transport Ltd, The Garage, Wellington Road, Horsehay, Telford, Shropshire, TF4 3Q	FE	0.00	23
<i>Ironbridge Gorge</i>					
	W2011/1102	Land off, Beech Road, Madeley, Telford, Shropshire	OB	0.00	92
<i>Ketley and Oakengates</i>					
	W2014/0645	Land adjacent Redvers House, Holyhead Road, Oakengates, Telford, Shropshire,	FR	0.00	1
	W2012/0056	Land at Dream Car Sale, Leonard Street and Land adjacent to 39 Stafford Road, Oakengates	OB	0.00	14
	W2011/0645	Coronation Bungalow, Station Fields, Oakengates, Telford, Shropshire, TF2 6DH	FR	0.00	2
	W2013/0738	Land adjacent 36 Quarry Lane, Red Lake, Telford, Shropshire	GR	0.00	1
	W2012/0572	Land adjacent 8 East Road, Ketley Bank, Telford, Shropshire, TF2 0DE	OB	0.00	2
<i>Lawley and Overdale</i>					
	W2011/0979	Land to the North of, Grove Road, Overdale, Shropshire, TF3 5AW	GR	0.00	80
	W2004/0980	LAND AT, LAWLEY, The Rock	GR	157.50	2294
<i>Madeley</i>					
	W2009/0937	Auto-Tech, Prince Street, Madeley, Telford, Shropshire.	OB	0.26	14
<i>Malinslee</i>					
	W2012/0514	27 Church Road, Dawley, Telford, Shropshire, TF4 2AS	FR	0.00	1
	W2013/0592	Former Ever Ready Factory, Hinkshay Road, Dawley, Telford, Shropshire	FE	0.00	165
<i>Muxton</i>					
	W2014/0008	Land rear of, 41, 43, 45, 47 Wellington Road, Muxton, Telford, Shropshire	GR	0.00	19
	W2014/0106	Land adjacent, 50 Wellington Road, Muxton, Telford, Shropshire	GR	0.00	3

FR - Former Residential FE - Former Employment OB - Other Brownfield GR - Greenfield

Ward Name	Application No	Address	Previous Use	Hectares	Not Started
<i>Newport North</i>					
	W2011/0179	Land at Broomfield Road, Newport, Shropshire	GR	0.00	30
	W2014/0085	Land adjacent The Glen, 10 Green Lane, Newport, Shropshire	GR	0.00	1
<i>Newport South</i>					
	W2014/1079	Land adjacent, 2 The Oaklands, Springfields, Newport, Shropshire	GR	0.00	8
	W2014/0938	Land adjacent, 10 Primrose Drive, Church Aston, Newport, Shropshire,	GR	0.00	1
<i>Newport West</i>					
	W2013/0898	Novascope House, Beaumaris Road, Newport, Shropshire, TF10 7BL	OB	0.00	4
	W2011/0821	Land At, Wellington Road, Newport, Shropshire,	GR	0.00	191
<i>Park</i>					
	W2012/0395	The Acorns, Donnerville Gardens, Admaston, Telford, Shropshire, TF5 0DE	FR	0.00	6
<i>Priorslee</i>					
	W2012/0530	Off, Priorslee East, Gatcombe Way/York Road/Hereford Drive, Priorslee, Telford, Shropshire,	GR	0.00	395
	W2013/0769	Land off, Castle Farm Way, Priorslee, Telford, Shropshire	GR	0.00	600
	W2008/0705	Land off, Frome Way, Donnington, Telford, Shropshire.	GR	2.35	79
<i>St. Georges</i>					
	W2013/0901	Units 7-9, Gower Street Industrial Estate, Gower Street, St Georges, Telford, Shropshire, TF2	FE	0.00	20
	W2014/1012	Land opposite Usc Con, 15 Rocfield Terrace, Lincoln Road, Wrockwardine Wood, Telford, Sh	GR	0.00	1
<i>The Nedge</i>					
	W2013/0808	Grange Park Primary School, Calcott, Stirchley, Telford, Shropshire, TF3 1YQ	EDU	0.00	37
<i>Woodside</i>					
	W2014/1114	Land adjoining Denholme, Park Lane, Woodside, Telford, Shropshire,	GR	0.00	1
<i>Wrockwardine</i>					
	W2014/0687	Land North of Dunelm, Rodington Heath, Telford, Shropshire	FE	0.00	6
	W2014/1050	Land Adjacent Falcon House, New Works, Telford, Shropshire	GR	0.00	1
	W2014/0484	Land West of The Cedars, Rodington, Telford, Shropshire	GR	0.00	14

FR - Former Residential FE - Former Employment OB - Other Brownfield GR - Greenfield

Ward Name	Application No	Address	Previous Use	Hectares	Not Started
	W2014/0371	Hollytree House, Allscott, Telford, Shropshire, TF6 5EE	FR	0.00	1
	W2013/0886	Land adjacent, 19 Aldermead Close, Admaston, Telford, Shropshire	GR	0.00	9
	W2013/0033	21 Bratton Road, Bratton, Telford, Shropshire, TF5 0BT	GR	0.00	5
<i>Wrockwardine Wood and Trench</i>					
	W2013/0806	Wrockwardine Wood Arts College, New Road, Wrockwardine Wood, Telford, TF2 6JZ	GR	0.00	53
	W2012/0833	72 Trench Road, Trench, Telford, Shropshire, TF2 6PF	GR	0.00	1
Borough				248.40	5581
RESERVE MATTERS GRANTED					
<i>Ercall</i>					
	W2011/1033	Land adjoining, 313, Holyhead Road, Wellington, Telford, Shropshire.	FR	0.05	1
<i>Haygate</i>					
	W2008/0108	Orleton Park, Orleton Lane, Wellington, Telford, Shropshire.	OB	6.84	165
Borough				6.8938	166

FR - Former Residential FE - Former Employment OB - Other Brownfield GR - Greenfield

Ward Name	Application No	Address	Previous Use	Hectares	Not Started
RESERVED MATTERS GRANTED					
<i>Church Aston and Lilleshall</i>					
	W2014/0906	Land adjacent 57 Limekiln Lane, Lilleshall, Newport, Shropshire	GR	0.00	1
	W2014/0437	Phase 2, land south east of Grove Farm, Wellington Road, Newport, Shropshire	FE	0.00	14
<i>Edgmond</i>					
	W2014/0401	Land adjacent Ingleside, 1 Edgmond Road, Newport, Shropshire	GR	0.00	80
<i>Hadley and Leegomery</i>					
	W2013/0720	Land at, Sommerfeld Road, Hadley, Telford, Shropshire,	FE	0.00	69
	W2013/1003	Land at Hadley Park West, (off Okehampton Road), Leegomery, Telford, Shropshire,	GR	0.00	87
	W2014/0221	Former Blockleys Brick Ltd, Land off Sommerfeld Road, Trench Lock, Telford, Shropshire, T	GR	0.00	54
	W2014/0769	Land Off, Hadley Park West, Hadley, Telford, Shropshire	GR	0.00	49
	W2014/0796	Land North of, Okehampton Road, Leegomery, Telford, Shropshire	GR	0.00	44
<i>Horsehay and Lightmoor</i>					
	W2014/0258	Land adjacent Lightmoor View, Brick Kiln Bank, Lightmoor, Telford, Shropshire	FE		61
	W2011/0506	Land at Lightmoor, Phases 3 & 4, Telford, Shropshire.	GR	2.34	7
	W2012/0419	Lawley Phase 6, Dawley Road, Lawley , Telford, Shropshire.	GR	11.05	159
	W2014/0237	Land at Doseley Works, Doseley, Telford, Shropshire, TF4 3BX	GR	0.00	192
<i>Ketley and Oakengates</i>					
	W2011/0852	Capewell Works, Sommerfield Road, Trench Lock, Telford, Shropshire,	GR	9.26	2
	W2010/0544	Craiglea, Holyhead Road, Ketley, Telford, Shropshire, TF1 5AN	GR	0.00	1
	W2010/0200	Capewell Works, Sommerfield Road, Trench Lock, Tel	FE	9.53	14
<i>Lawley and Overdale</i>					
	W2011/0488	Phases 3 & 4 Lawley Village, Lawley Drive, Lawley, Telford,	GR	25.98	34
<i>Newport East</i>					
	W2013/0354	48 Stafford Road, Newport, Shropshire, TF10 7NA	OB	0.00	2

FR - Former Residential

FE - Former Employment

OB - Other Brownfield

GR - Greenfield

Ward Name	Application No	Address	Previous Use	Hectares	Not Started
<i>Newport West</i>					
	W2013/0928	Phase 1, Land off Wellington Road, Newport, Shropshire	GR	0.00	2
<i>Priorslee</i>					
	W2012/0587	Redhill Clay Pit, Redhill Way, St Georges, Telford, Shropshire,	OB	1.00	16
<i>Wrockwardine</i>					
	W2012/0895	Land Adjacent 17, Charlton, Telford, Shropshire, TF6 5EH	OB	0.00	2
Borough				59.16	890
TOTALS				327.3	8368

FR - Former Residential FE - Former Employment OB - Other Brownfield GR - Greenfield

Appendix 4a - Completed Employment Floorspace 2014/15

Application No	Address	Use Class	Previous Use	Sq M	Hectares
W2013/0462	Craemer House Hortonwood 1	B1(a)		997	3.67
W2014/1043	Mere Park Garden Centre, Stafford Road, Newport, Shropshire, TF10 9BY	B1(a)		37	0.00
W2010/0002	Land at Lodgewood Farm Redhill Way Telford TF2 9PD	B1(a)	GR	200	0.72
W2013/0315	Land off Hortonwood 60 & 65, Hortonwood, Telford, Shropshire	B1(a)	GR	260	1.17
W2011/0023	Hadley Castle Works Hadley	B1(a)	PDL	-469	12.60
W2012/0008	Southwater Telford Town Centre	B1(a)	PDL	62	1.97
W2012/0118	The Glebe Centre Glebe Street Wellington	B1(a)	PDL	-1685	0.00
W2012/0118	The Glebe Centre Glebe Street Wellington	B1(a)	PDL	467	0.00
W2012/0752	Wylie and Holland Motor Cycles 146 Watling Street Wellington	B1(a)	PDL	-98	0.48
W2013/0636	Communitcation House Watling Street Wellinton TF1 2HN	B1(a)	PDL	-170	0.03
W2013/0771	Bluefin, Suite G01 Grosvenor House Hollinswood Road Snedshill TF2 9TW	B1(a)	PDL	-69	0.00
W2014/0030	Church House New Church Road Wellington	B1(a)	PDL	-140	0.00
W2014/0045	Pergo House Barclay Gardens Donnington TF2 8AB	B1(a)	PDL	-134	0.00
W2014/0242	Unit A, Doseley Industrial Estate, Frame Lane, Doseley, Telford, Shropshire, TF4 3BY	B1(a)	PDL	-979	0.00
W2014/0249	Haulotte UK Ltd, Stafford Park 7, Stafford Park, Telford, Shropshire, TF3 3AT	B1(a)	PDL	45	0.00
W2014/0260	CBL Supplies Ltd/The Chair People/CPS Group Ltd/EAC Telford Ltd, Halesfield 13, Halesfield, Telford, Shropshire, TF7	B1(a)	PDL	2364	9440.00
W2014/0290	BAE Systems Ltd, Hadley Castle Works, Hadley, Telford, Shropshire, TF1 6QW	B1(a)	PDL	1240	0.00
W2014/0720	Capital House, Hadley Road East, Telford, Shropshire, TF1 6QJ	B1(a)	PDL	-636	0.00
W2014/1019	Unit 11, The Bridges Business Park, Bridge Road, Horsehay, Telford, Shropshire, TF4 3EE	B1(a)	PDL	-263	263.00
Use Class Net				1030	
Use Class Gross				5672	
W2014/0472	Wintech Engineering Ltd, Halesfield 2, Telford, Shropshire, TF7 4QH	B1(b)	PDL	125	0.00
W2014/0472	Wintech Engineering Ltd, Halesfield 2, Telford, Shropshire, TF7 4QH	B1(b)	PDL	-125	0.00
Use Class Net				0	
Use Class Gross				125	
W2014/0132	4 Woodcote, Newport, Shropshire, TF10 9AX	B1(c)	GR	74	0.00

Application No	Address	Use Class	Previous Use	Sq M	Hectares
W2014/0134	Land at Wheat Leasows, Telford, Shropshire	B1(c)	GR	100	11.70
W2014/0211	Stockton Grange, Stockton, Newport, Shropshire, TF10 9BA	B1(c)	GR	487	0.00
W2014/0241	Stag House, Tibberton, Newport, Shropshire, TF10 8NY	B1(c)	GR	700	0.00
W2014/0379	10 Rushmoor Lane, Bratton, Telford, Shropshire, TF5 0DA	B1(c)	GR	-242	0.00
W2014/0541	Longford Mill Farm, Longford, Newport, Shropshire, TF10 8LS	B1(c)	GR	976	976.00
W2014/0701	Greenways, Ashley Road, St Georges, Telford, Shropshire, TF2 9LF	B1(c)	GR	14	0.00
W2014/0777	Land opposite Blackbird Close, Overdale, Telford, Shropshire	B1(c)	GR	0	0.00
W2012/0752	Wylie and Holland Motor Cycles 146 Watling Street Wellington	B1(c)	PDL	-195	0.48
W2013/0530	AR Manley & Sons Somerwood Rodington SY4 4RF	B1(c)	PDL	26	0.00
W2014/0474	Magna Special Confectioners Ltd, Magna House, Stafford Park 3, Telford, Shropshire, TF3 3BH	B1(c)	PDL	38	11874.00
W2014/0644	Units C1 & E, Pickstock Manor Farm, Pickstock, Newport, Shropshire	B1(c)	PDL	-78	0.00
W2014/1028	VA Technology Ltd UK, Halesfield 9, Halesfield, Telford, Shropshire, TF7 4QW	B1(c)	PDL	1184	11500.00

Use Class Net

3084

Use Class Gross

3599

W2013/0462	Craemer House Hortonwood 1	B2		5409	3.67
W2013/0882	TJ Vickers Trench Road Trench TF2 6PL	B2		506	0.00
W2013/0882	TJ Vickers Trench Road Trench TF2 6PL	B2		-31	0.00
W2011/0878	Faccenda Factory Hortonwood 60 Hortonwood	B2	GR	13489	4.88
W2012/0170	Agropharm Ltd, B5061 Overley Hill Overley	B2	PDL	158	2.83
W2012/0790	Information Technology Rentals Ltd, Technology House Halesfield 7 Halesfield	B2	PDL	833	832.00
W2013/0095	Euro Films Ltd, Units B1 & B2 Hortonwood 7 Hortonwood	B2	PDL	0	0.14
W2013/0944	54 The Pheasant Inn Market Street Wellington TF1 1DT	B2	PDL	200	0.16
W2014/0404	Units 37-38, Ketley Business Park, Ketley, Telford, Shropshire, TF1 5JD	B2	PDL	2706	0.00
W2014/0475	Unit 42, Ketley Business Park, Ketley, Telford, TF1 5JD	B2	PDL	-3000	0.00
W2014/0606	Plot 1B, Telford 54, Nedge Hill, Telford, Shropshire Telford 54, Nedge Hill, Telford, Shropshire	B2	PDL	967	4.00
W2014/0644	Units C1 & E, Pickstock Manor Farm, Pickstock, Newport, Shropshire	B2	PDL	78	0.00

Use Class Net

21314

Use Class Gross

24345

Application No	Address	Use Class	Previous Use	Sq M	Hectares
W2013/0462	Craemer House Hortonwood 1	B8		1218	3.67
W2014/1018	Matalan Retail Ltd, Unit J, Wrekin Retail Park, Arleston, Telford, TF1 2DE	B8		18	0.00
W2013/0315	Land off Hortonwood 60 & 65, Hortonwood, Telford, Shropshire	B8	GR	5326	1.17
W2011/0857	New Hall Mews, 1 New Hall Road, Wellington, Telford, Shropshire, TF1 1JS	B8	PDL	-50	50.00
W2012/0752	Wylie and Holland Motor Cycles 146 Watling Street Wellington	B8	PDL	866	0.48
W2013/0472	Tweeddale Ambulance Station Cuckoo Oak Green, Bridgnorth Road Madeley TF6 4JD	B8	PDL	284	1586.00
W2014/0165	Blists Hill Victorian Town, Legges Way, Madeley, Telford, Shropshire, TF7 5UD	B8	PDL	198	0.00
W2014/0290	BAE Systems Ltd, Hadley Castle Works, Hadley, Telford, Shropshire, TF1 6QW	B8	PDL	-620	0.00
W2014/0644	Units C1 & E, Pickstock Manor Farm, Pickstock, Newport, Shropshire	B8	PDL	-420	0.00
W2014/0750	Baileys, 18 Woodcote, Newport, Shropshire, TF10 9BW	B8	PDL	-254	0.00
W2014/0784	Unit 20, Ketley Business Park, Ketley, Telford, Shropshire, TF1 5JD	B8	PDL	-182	0.00
W2015/0050	Brockton Business Park, Halesfield 10, Halesfield, Telford, Shropshire, TF7 4QP	B8	PDL	0	0.54
Use Class Net				6384	
Use Class Gross				7910	
Borough Net Totals				31812	
Borough Gross Totals				41651	

Appendix 4b - Other Non-residential Completed Floorspace 2014/15

Application No	Address	Use Class	Previous Use	Sq M	Hectares
W2010/0050	Mere Park Garden Centre Stafford Road Newport	A1		0	0.00
W2013/0581	Land at Wrekin Retail Park Whitchurch Drive Arleston TF1 2DE	A1		116	0.00
W2014/1018	Matalan Retail Ltd, Unit J, Wrekin Retail Park, Arleston, Telford, TF1 2DE	A1		-14	0.00
W2006/0463	LAND TO THE NORTH OF, HOLYHEAD ROAD KETLEY Hadley	A1	PDL	130	2.81
W2010/0199	29 Sherwood Street Telford Town Centre, Telford, Shropshire.	A1	PDL	-100	
W2011/0632	Land at Audley Avenue Newport	A1	PDL	-2613	
W2012/0008	Southwater Telford Town Centre	A1	PDL	62	1.97
W2012/0118	The Glebe Centre Glebe Street Wellington	A1	PDL	190	0.00
W2012/0498	Land off Parkway Madeley	A1	PDL	125	10043.00
W2012/0551	Land off, Parkway Madeley	A1	PDL	1400	1.00
W2012/0752	Wylie and Holland Motor Cycles 146 Watling Street Wellington	A1	PDL	-12	0.48
W2012/0866	Land off Burford Brookside	A1	PDL	534	621.00
W2012/0867	40 High Street Dawley	A1	PDL	-14	0.01
W2012/1019	CO-OP Food Store Limes Walk Oakengates	A1	PDL	-973	0.10
W2012/1019	CO-OP Food Store Limes Walk Oakengates	A1	PDL	508	0.10
W2012/1019	CO-OP Food Store Limes Walk Oakengates	A1	PDL	465	0.10
W2013/0409	25, 29A Tan Bank, Wellington, Telford, Shropshire, TF1 1HJ	A1	PDL	-49	0.01
W2013/0472	Tweeddale Ambulance Station Cuckoo Oak Green, Bridgnorth Road Madeley TF6 4JD	A1	PDL	89	1586.00
W2013/0935	Unit 12 Telford Forge Retail Park, Colliers Way, Old Park, Telford, Shropshire, TF3 4AG	A1	PDL	5675	0.00
W2013/0935	Unit 12 Telford Forge Retail Park, Colliers Way, Old Park, Telford, Shropshire, TF3 4AG	A1	PDL	21809	0.00
W2013/0969	Telford Forge Retail Park Car Park, Colliers Way, Old Park, Telford, Shropshire, TF3 4AG	A1	PDL	-22	0.00
W2014/0004	7 Oxford Street, Oakengates, Telford, Shropshire, TF2 6AA	A1	PDL	-121	0.00
W2014/0011	Tesco Stores Ltd, Wrekin Retail Park, Arleston, Telford, Shropshire, TF1 2DE	A1	PDL	18	0.00
W2014/0030	Church House New Church Road Wellington	A1	PDL	42	0.00
W2014/0045	Pergo House Barclay Gardens Donnington TF2 8AB	A1	PDL	134	0.00
W2014/0438	54-60 Market Street, Oakengates, Telford, Shropshire, TF2 6DU	A1	PDL	91	0.00

Application No	Address	Use Class	Previous Use	Sq M	Hectares
W2014/0438	54-60 Market Street, Oakengates, Telford, Shropshire, TF2 6DU	A1	PDL	-181	0.00
W2014/0556	Merrythought Village, The Wharfage, Ironbridge, Telford, Shropshire, TF8 7NJ	A1	PDL	325	3983.00
W2014/0605	60B Upper Bar, Newport, Shropshire, TF10 7EJ	A1	PDL	-50	0.00
W2014/0748	Telford Shopping Centre, Telford Town Centre, Telford, Shropshire,	A1	PDL	-461	461.00
W2014/0912	70 Furnace Lane, Trench, Telford, Shropshire, TF2 7JE	A1	PDL	-1000	0.00
W2014/0940	Site of Hollinswood Local Centre, Hollinswood, Telford, Shropshire	A1	PDL	-282	0.00
W2015/0110	Unit 12 Telford Forge Retail Park, Colliers Way, Old Park, Telford, Shropshire, TF3 4AG	A1	PDL	1000	1000.00
Use Class Net				26821	
Use Class Gross				32712	
W2011/0953	Gladstone House Hadley	A2	PDL	140	0.98
W2012/0008	Southwater Telford Town Centre	A2	PDL	62	1.97
W2012/0008	Southwater Telford Town Centre	A2	PDL	-1174	1.97
W2012/0118	The Glebe Centre Glebe Street Wellington	A2	PDL	467	0.00
W2013/0569	38 High Street Dawley Telford	A2	PDL	-142	0.00
W2014/0438	54-60 Market Street, Oakengates, Telford, Shropshire, TF2 6DU	A2	PDL	91	0.00
W2014/0679	66 Court Street, Madeley, Telford, Shropshire, TF7 5EP	A2	PDL	238	0.00
Use Class Net				-318	
Use Class Gross				998	
W2013/0581	Land at Wrekin Retail Park Whitchurch Drive Arleston TF1 2DE	A3		149	0.00
W2010/0199	29 Sherwood Street Telford Town Centre, Telford, Shropshire.	A3	PDL	100	
W2012/0008	Southwater Telford Town Centre	A3	PDL	1208	1.97
W2012/0118	The Glebe Centre Glebe Street Wellington	A3	PDL	95	0.00
W2012/0472	Southwater Square Southwater Way Telford Town Centre	A3	PDL	313	2.01
W2012/0498	Land off Parkway Madeley	A3	PDL	260	10043.00
W2013/0834	The Font Italia, High Street, Ironbridge, Telford, Shropshire, TF8 7AD	A3	PDL	40	400.00
W2013/0996	Bella Italia, 5 Southwater Square, Town Centre, Telford, Shropshire, TF3 4HS	A3	PDL	78	78.00
W2014/0004	7 Oxford Street, Oakengates, Telford, Shropshire, TF2 6AA	A3	PDL	14	0.00
W2014/0004	7 Oxford Street, Oakengates, Telford, Shropshire, TF2 6AA	A3	PDL	121	0.00

Application No	Address	Use Class	Previous Use	Sq M	Hectares
W2014/0227	Nando's, Unit 6, Southwater Square, Telford Shopping Centre, Telford, TF3 4HS	A3	PDL	147	147.00
W2014/0664	Unit 2, Park Avenue, Southwater, Telford, Shropshire, TF3 4BF	A3	PDL	1000	1000.00
W2014/0675	Unit 11, Southwater Square, Southwater Way, Telford Town Centre, Telford, Shropshire, TF3 4JG	A3	PDL	-505	505.00
W2014/0675	Unit 11, Southwater Square, Southwater Way, Telford Town Centre, Telford, Shropshire, TF3 4JG	A3	PDL	505	505.00
W2014/1138	5 Church Street, Wellington, Telford, Shropshire, TF1 1DD	A3	PDL	121	0.07

Use Class Net

3646

Use Class Gross

4151

W2012/0165	Land off Hadley Park Roundabout Hadley Park	A4	GR	283	0.58
W2012/0008	Southwater Telford Town Centre	A4	PDL	1208	1.97
W2012/0472	Southwater Square Southwater Way Telford Town Centre	A4	PDL	313	2.01
W2013/0944	54 The Pheasant Inn Market Street Wellington TF1 1DT	A4	PDL	-200	0.16
W2014/0630	The Three Crowns (Former) 7 High Street, Wellington, Telford, Shropshire, TF1 1LL	A4	PDL	-210	0.00
W2014/0700	New Inn, 2 Stafford Road, Newport, Shropshire, TF10 7LX	A4	PDL	112	0.00
W2014/0700	New Inn, 2 Stafford Road, Newport, Shropshire, TF10 7LX	A4	PDL	-20	0.00
W2014/1138	5 Church Street, Wellington, Telford, Shropshire, TF1 1DD	A4	PDL	-121	0.07

Use Class Net

1365

Use Class Gross

1916

W2014/0518	Wrekin Retail Park, Whitchurch Drive, Telford, Shropshire, TF1 2DE	A5		10	0.00
W2012/0498	Land off Parkway Madeley	A5	PDL	260	10043.00
W2012/0866	Land off Burford Brookside	A5	PDL	86	621.00
W2013/0569	38 High Street Dawley Telford	A5	PDL	142	0.00
W2013/0636	Communitcation House Watling Street Wellinton TF1 2HN	A5	PDL	170	0.03
W2014/0166	Unit 1, Wellington Road, Muxton, Telford, Shropshire, TF2 8NQ	A5	PDL	-63	0.00
W2014/0166	Unit 1, Wellington Road, Muxton, Telford, Shropshire, TF2 8NQ	A5	PDL	83	0.00
W2014/0940	Site of Hollinswood Local Centre, Hollinswood, Telford, Shropshire	A5	PDL	-59	0.00

Use Class Net

629

Use Class Gross

751

Application No	Address	Use Class	Previous Use	Sq M	Hectares
W2011/0168	Premier Inn Euston Way Telford Town Centre	C1	PDL	783	0.66
W2012/0008	Southwater Telford Town Centre	C1	PDL	3084	1.97
W2013/0609	Telford Hotel & Golf Resort Great Hay Drive Sutton Hill TF7 4DT	C1	PDL	1750	0.00
W2014/0068	The Laurels, 78A Holyhead Road, Ketley, Telford, Shropshire, TF1 5DJ	C1	PDL	-94	0.00
Use Class Net				5523	
Use Class Gross				5617	
W2009/0326	Randlay Centre Randlay Community Centre Randlay, Telford, Shropshire.	C2	PDL	3159	0.92
W2011/0735	Audley Court Audley Avenue Newport	C2	PDL	165	1.33
Use Class Net				3324	
Use Class Gross				3324	
W2014/0191	15 Jockey Bank, Ironbridge, Telford, Shropshire, TF8 7PD	C3	PDL	-577	576.50
W2014/0465	12 High Street Madeley Telford Shropshire TF7 5AQ	C3	PDL	-65	65.00
W2014/0590	Mushroom Farm, Hill Wicket, Newport, Shropshire, TF9 2DW	C3	PDL	-1250	1.54
Use Class Net				-1892	
Use Class Gross				0	
W2013/0637	Land Adj to Carn Brea 34 Station Road Admaston TF5 0AW	D1		-60	0.00
W2013/0423	Land Off Castle Farm Way Priorslee	D1	GR	0	16.80
W2012/0008	Southwater Telford Town Centre	D1	PDL	-55	1.97
W2012/0118	The Glebe Centre Glebe Street Wellington	D1	PDL	467	0.00
W2012/0472	Southwater Square Southwater Way Telford Town Centre	D1	PDL	3910	2.01
W2012/0498	Land off Parkway Madeley	D1	PDL	1657	10043.00
W2012/0543	Wrekin College Sutherland Road Wellington	D1	PDL	313	0.08
W2012/0713	Priorslee Primary Academy Priorslee Avenue Priorslee	D1	PDL	678	1.49
W2013/0025	Telford College of Arts & Technology Haybridge Road Wellington	D1	PDL	50	0.14
W2013/0696	TCAT Wellington	D1	PDL	1693	0.00
W2013/0823	Blessed Robert Johnson college Whitchurch Road Wellington TF1 3DY	D1	PDL	-5970	0.00
W2013/0842	Cultural And Community Cohesion Centre, Stafford Road, Oakengates, Telford, Shropshire, TF2 6JN	D1	PDL	38	0.00

Application No	Address	Use Class	Previous Use	Sq M	Hectares
W2013/0842	Cultural And Community Cohesion Centre, Stafford Road, Oakengates, Telford, Shropshire, TF2 6JN	D1	PDL	-6	0.00
W2013/0847	Adams Grammer School High Street Newport TF10 7BD	D1	PDL	-86	0.00
W2013/0847	Adams Grammer School High Street Newport TF10 7BD	D1	PDL	517	0.00
W2014/0016	Meadows Primary School & Nursery Riddings Close Ketley TF1 5HF	D1	PDL	515	0.00
W2014/0143	Newport Infant School, Granville Avenue, Newport, Shropshire, TF10 7DX	D1	PDL	194	0.00
W2014/0351	Unit E4, Stafford Park 15, Stafford Park, Telford, Shropshire, TF3 3BB	D1	PDL	324	323.86
W2014/0351	Unit E4, Stafford Park 15, Stafford Park, Telford, Shropshire, TF3 3BB	D1	PDL	-324	323.86
W2014/0449	Telford College of Arts & Technology, Haybridge Road, Wellington, Telford, TF1 2NP	D1	PDL	1185	0.00
W2014/0646	Wrekin Housing Trust, High Mount Community Building, High Mount, Donnington, Telford, Shropshire	D1	PDL	14	0.00
W2014/0720	Capital House, Hadley Road East, Telford, Shropshire, TF1 6QJ	D1	PDL	636	0.00
Use Class Net				5689	
Use Class Gross				12190	
W2014/0530	Exotic Zoo, Unit 9, Bradley Road, Donnington Wood, Telford, TF2 7RG	D2		60	0.00
W2014/0132	4 Woodcote, Newport, Shropshire, TF10 9AX	D2	GR	74	0.00
W2014/0777	Land opposite Blackbird Close, Overdale, Telford, Shropshire	D2	GR	0	0.00
W2009/0326	Randlay Centre Randlay Community Centre Randlay, Telford, Shropshire.	D2	PDL	-403	0.92
W2012/0008	Southwater Telford Town Centre	D2	PDL	4937	1.97
W2013/0409	25, 29A Tan Bank, Wellington, Telford, Shropshire, TF1 1HJ	D2	PDL	-100	0.01
W2014/0170	Victoria Park, Water Lane, Newport, Shropshire, TF10 7LD	D2	PDL	54	0.00
W2014/0456	Horsehay Village Golf Centre, Horsehay, Telford, Shropshire, TF4 3BT	D2	PDL	280	74.00
W2014/0475	Unit 42, Ketley Business Park, Ketley, Telford, TF1 5JD	D2	PDL	3000	0.00
W2014/0487	Telford Sailing Club, Teece Drive, Priorslee, Telford, Shropshire, TF2 9SQ	D2	PDL	5	0.00
W2014/0487	Telford Sailing Club, Teece Drive, Priorslee, Telford, Shropshire, TF2 9SQ	D2	PDL	38	0.00
W2014/0784	Unit 20, Ketley Business Park, Ketley, Telford, Shropshire, TF1 5JD	D2	PDL	182	0.00
W2014/1019	Unit 11, The Bridges Business Park, Bridge Road, Horsehay, Telford, Shropshire, TF4 3EE	D2	PDL	263	263.00
Use Class Net				8390	
Use Class Gross				8893	
W2014/0227	Nando's, Unit 6, Southwater Square, Telford Shopping Centre, Telford, TF3 4HS	NK	PDL	-147	147.00

Application No	Address	Use Class	Previous Use	Sq M	Hectares
W2014/0664	Unit 2, Park Avenue, Southwater, Telford, Shropshire, TF3 4BF	NK	PDL	1000	1000.00
W2014/0702	Travel World, Unit G, Halesfield 14, Telford, Shropshire, TF7 4QR	NK	PDL	-100	100.00
W2015/0050	Brockton Business Park, Halesfield 10, Halesfield, Telford, Shropshire, TF7 4QP	NK	PDL	0	0.54
Use Class Net				753	
Use Class Gross				1000	
W2013/0996	Bella Italia, 5 Southwater Square, Town Centre, Telford, Shropshire, TF3 4HS	Other	PDL	-78	78.00
W2014/0260	CBL Supplies Ltd/The Chair People/CPS Group Ltd/EAC Telford Ltd, Halesfield 13, Halesfield, Telford, Shropshire, TF7	Other	PDL	-2364	9440.00
W2014/0556	Merrythought Village, The Wharfage, Ironbridge, Telford, Shropshire, TF8 7NJ	Other	PDL	-325	3983.00
W2014/0718	The Old Brick Yard, Cherrington, Newport, Shropshire Cherrington, Newport, Shropshire	Other	PDL	-14000	1.40
Use Class Net				-16767	
Use Class Gross				0	
W2013/0369	Wilsons Auctions, Trench Lock 2, Telford, TF1 5YL	SG		47	0.00
W2014/0282	Land north of, Hortonwood 66, Hortonwood, Telford, Shropshire	SG	GR	6900	0.69
W2014/0379	10 Rushmoor Lane, Bratton, Telford, Shropshire, TF5 0DA	SG	GR	242	0.00
W2013/0409	25, 29A Tan Bank, Wellington, Telford, Shropshire, TF1 1HJ	SG	PDL	149	0.01
W2013/0472	Tweeddale Ambulance Station Cuckoo Oak Green, Bridgnorth Road Madeley TF6 4JD	SG	PDL	-373	1586.00
W2013/0668	Former Service Station Kings Street Wellington	SG	PDL	50	0.00
W2013/0771	Bluefin, Suite G01 Grosvenor House Hollinswood Road Snedshill TF2 9TW	SG	PDL	69	0.00
W2013/0969	Telford Forge Retail Park Car Park, Colliers Way, Old Park, Telford, Shropshire, TF3 4AG	SG	PDL	22	0.00
W2014/0242	Unit A, Doseley Industrial Estate, Frame Lane, Doseley, Telford, Shropshire, TF4 3BY	SG	PDL	979	0.00
W2014/0404	Units 37-38, Ketley Business Park, Ketley, Telford, Shropshire, TF1 5JD	SG	PDL	-2706	0.00
W2014/0506	Monster Beds, Stafford Park 1, Stafford Park, Telford, Shropshire, TF3 3BD	SG	PDL	7000	0.00
W2014/0605	60B Upper Bar, Newport, Shropshire, TF10 7EJ	SG	PDL	15	0.00
W2014/0644	Units C1 & E, Pickstock Manor Farm, Pickstock, Newport, Shropshire	SG	PDL	420	0.00
W2014/0702	Travel World, Unit G, Halesfield 14, Telford, Shropshire, TF7 4QR	SG	PDL	100	100.00
W2014/0748	Telford Shopping Centre, Telford Town Centre, Telford, Shropshire,	SG	PDL	461	461.00
W2014/0767	Telford Forge Retail Car Park, Colliers Way, Old Park, Telford, Shropshire, TF3 4AG	SG	PDL	135	135.00
W2014/0767	Telford Forge Retail Car Park, Colliers Way, Old Park, Telford, Shropshire, TF3 4AG	SG	PDL	-135	135.00

Application No	Address	Use Class	Previous Use	Sq M	Hectares
W2014/0789	The Windings, Grange Lane, Red Hill, Telford, Shropshire, TF2 9PB	SG	PDL	982	0.00
Use Class Net				14357	
Use Class Gross				17571	
Borough Net Totals				51520	
Borough Gross Totals				89122	

Appendix 4c - Town Centre Uses Completed Floorspace 2014/15

Application No	Address	Use Class	Previous Use	Sq M	Hectares
W2010/0050	Mere Park Garden Centre Stafford Road Newport	A1		0	0.00
W2013/0581	Land at Wrekin Retail Park Whitchurch Drive Arleston TF1 2DE	A1		116	0.00
W2014/1018	Matalan Retail Ltd, Unit J, Wrekin Retail Park, Arleston, Telford, TF1 2DE	A1		-14	0.00
W2006/0463	LAND TO THE NORTH OF, HOLYHEAD ROAD KETLEY Hadley	A1	PDL	130	2.81
W2010/0199	29 Sherwood Street Telford Town Centre, Telford, Shropshire.	A1	PDL	-100	
W2011/0632	Land at Audley Avenue Newport	A1	PDL	-2613	
W2012/0008	Southwater Telford Town Centre	A1	PDL	62	1.97
W2012/0118	The Glebe Centre Glebe Street Wellington	A1	PDL	190	0.00
W2012/0498	Land off Parkway Madeley	A1	PDL	125	10043.00
W2012/0752	Wylie and Holland Motor Cycles 146 Watling Street Wellington	A1	PDL	-12	0.48
W2012/0866	Land off Burford Brookside	A1	PDL	534	621.00
W2013/0472	Tweeddale Ambulance Station Cuckoo Oak Green, Bridgnorth Road Madeley TF6 4JD	A1	PDL	89	1586.00
W2013/0935	Unit 12 Telford Forge Retail Park, Colliers Way, Old Park, Telford, Shropshire, TF3 4AG	A1	PDL	5675	0.00
W2013/0935	Unit 12 Telford Forge Retail Park, Colliers Way, Old Park, Telford, Shropshire, TF3 4AG	A1	PDL	21809	0.00
W2013/0969	Telford Forge Retail Park Car Park, Colliers Way, Old Park, Telford, Shropshire, TF3 4AG	A1	PDL	-22	0.00
W2014/0011	Tesco Stores Ltd, Wrekin Retail Park, Arleston, Telford, Shropshire, TF1 2DE	A1	PDL	18	0.00
W2014/0030	Church House New Church Road Wellington	A1	PDL	42	0.00
W2014/0045	Pergo House Barclay Gardens Donnington TF2 8AB	A1	PDL	134	0.00
W2014/0556	Merrythought Village, The Wharfage, Ironbridge, Telford, Shropshire, TF8 7NJ	A1	PDL	325	3983.00
W2014/0912	70 Furnace Lane, Trench, Telford, Shropshire, TF2 7JE	A1	PDL	-1000	0.00
W2014/0940	Site of Hollinswood Local Centre, Hollinswood, Telford, Shropshire	A1	PDL	-282	0.00
W2015/0110	Unit 12 Telford Forge Retail Park, Colliers Way, Old Park, Telford, Shropshire, TF3 4AG	A1	PDL	1000	1000.00
W2012/0008	Southwater Telford Town Centre	A2	PDL	62	1.97
W2012/0008	Southwater Telford Town Centre	A2	PDL	-1174	1.97
W2012/0118	The Glebe Centre Glebe Street Wellington	A2	PDL	467	0.00

Application No	Address	Use Class	Previous Use	Sq M	Hectares
W2013/0462	Craemer House Hortonwood 1	B1(a)		997	3.67
W2014/1043	Mere Park Garden Centre, Stafford Road, Newport, Shropshire, TF10 9BY	B1(a)		37	0.00
W2010/0002	Land at Lodgewood Farm Redhill Way Telford TF2 9PD	B1(a)	GR	200	0.72
W2013/0315	Land off Hortonwood 60 & 65, Hortonwood, Telford, Shropshire	B1(a)	GR	260	1.17
W2011/0023	Hadley Castle Works Hadley	B1(a)	PDL	-469	12.60
W2012/0008	Southwater Telford Town Centre	B1(a)	PDL	62	1.97
W2012/0118	The Glebe Centre Glebe Street Wellington	B1(a)	PDL	467	0.00
W2012/0118	The Glebe Centre Glebe Street Wellington	B1(a)	PDL	-1685	0.00
W2012/0752	Wylie and Holland Motor Cycles 146 Watling Street Wellington	B1(a)	PDL	-98	0.48
W2013/0636	Communitcation House Watling Street Wellinton TF1 2HN	B1(a)	PDL	-170	0.03
W2014/0030	Church House New Church Road Wellington	B1(a)	PDL	-140	0.00
W2014/0045	Pergo House Barclay Gardens Donnington TF2 8AB	B1(a)	PDL	-134	0.00
W2014/0242	Unit A, Doseley Industrial Estate, Frame Lane, Doseley, Telford, Shropshire, TF4 3BY	B1(a)	PDL	-979	0.00
W2014/0249	Haulotte UK Ltd, Stafford Park 7, Stafford Park, Telford, Shropshire, TF3 3AT	B1(a)	PDL	45	0.00
W2014/0260	CBL Supplies Ltd/The Chair People/CPS Group Ltd/EAC Telford Ltd, Halesfield 13, Halesfield, Telford, Shropshire, TF7	B1(a)	PDL	2364	9440.00
W2014/0290	BAE Systems Ltd, Hadley Castle Works, Hadley, Telford, Shropshire, TF1 6QW	B1(a)	PDL	1240	0.00
W2014/0720	Capital House, Hadley Road East, Telford, Shropshire, TF1 6QJ	B1(a)	PDL	-636	0.00
W2014/1019	Unit 11, The Bridges Business Park, Bridge Road, Horsehay, Telford, Shropshire, TF4 3EE	B1(a)	PDL	-263	263.00
W2014/0530	Exotic Zoo, Unit 9, Bradley Road, Donnington Wood, Telford, TF2 7RG	D2		60	0.00
W2014/0132	4 Woodcote, Newport, Shropshire, TF10 9AX	D2	GR	74	0.00
W2014/0777	Land opposite Blackbird Close, Overdale, Telford, Shropshire	D2	GR	0	0.00
W2009/0326	Randlay Centre Randlay Community Centre Randlay, Telford, Shropshire.	D2	PDL	-403	0.92
W2012/0008	Southwater Telford Town Centre	D2	PDL	4937	1.97
W2014/0170	Victoria Park, Water Lane, Newport, Shropshire, TF10 7LD	D2	PDL	54	0.00
W2014/0456	Horsehay Village Golf Centre, Horsehay, Telford, Shropshire, TF4 3BT	D2	PDL	280	74.00
W2014/0475	Unit 42, Ketley Business Park, Ketley, Telford, TF1 5JD	D2	PDL	3000	0.00
W2014/0487	Telford Sailing Club, Teece Drive, Priorslee, Telford, Shropshire, TF2 9SQ	D2	PDL	5	0.00
W2014/0487	Telford Sailing Club, Teece Drive, Priorslee, Telford, Shropshire, TF2 9SQ	D2	PDL	38	0.00

Application No	Address	Use Class	Previous Use	Sq M	Hectares
W2014/0784	Unit 20, Ketley Business Park, Ketley, Telford, Shropshire, TF1 5JD	D2	PDL	182	0.00
W2014/1019	Unit 11, The Bridges Business Park, Bridge Road, Horsehay, Telford, Shropshire, TF4 3EE	D2	PDL	263	263.00
Area Net				35150	
Area Gross				45343	
Dawley					
W2012/0867	40 High Street Dawley	A1	PDL	-14	0.01
W2013/0569	38 High Street Dawley Telford	A2	PDL	-142	0.00
Area Net				-156	
Area Gross				0	
Hadley					
W2011/0953	Gladstone House Hadley	A2	PDL	140	0.98
Area Net				140	
Area Gross				140	
Madeley					
W2012/0551	Land off, Parkway Madeley	A1	PDL	1400	1.00
W2014/0679	66 Court Street, Madeley, Telford, Shropshire, TF7 5EP	A2	PDL	238	0.00
Area Net				1638	
Area Gross				1638	
Newport					
W2014/0605	60B Upper Bar, Newport, Shropshire, TF10 7EJ	A1	PDL	-50	0.00
Area Net				-50	
Area Gross				0	
Oakengates					
W2012/1019	CO-OP Food Store Limes Walk Oakengates	A1	PDL	-973	0.10
W2012/1019	CO-OP Food Store Limes Walk Oakengates	A1	PDL	465	0.10
W2012/1019	CO-OP Food Store Limes Walk Oakengates	A1	PDL	508	0.10

Application No	Address	Use Class	Previous Use	Sq M	Hectares
W2014/0004	7 Oxford Street, Oakengates, Telford, Shropshire, TF2 6AA	A1	PDL	-121	0.00
W2014/0438	54-60 Market Street, Oakengates, Telford, Shropshire, TF2 6DU	A1	PDL	-181	0.00
W2014/0438	54-60 Market Street, Oakengates, Telford, Shropshire, TF2 6DU	A1	PDL	91	0.00
W2014/0438	54-60 Market Street, Oakengates, Telford, Shropshire, TF2 6DU	A2	PDL	91	0.00
Area Net				-121	
Area Gross				1154	
Town Centre					
W2014/0748	Telford Shopping Centre, Telford Town Centre, Telford, Shropshire,	A1	PDL	-461	461.00
W2013/0771	Bluefin, Suite G01 Grosvenor House Hollinswood Road Snedshill TF2 9TW	B1(a)	PDL	-69	0.00
Area Net				-530	
Area Gross				0	
Wellington					
W2013/0409	25, 29A Tan Bank, Wellington, Telford, Shropshire, TF1 1HJ	A1	PDL	-49	0.01
W2013/0409	25, 29A Tan Bank, Wellington, Telford, Shropshire, TF1 1HJ	D2	PDL	-100	0.01
Area Net				-149	
Area Gross				0	
Borough Net Totals				35923	
Borough Gross Totals				48275	

Appendix 5 - Non-residential Under Construction 2014/15

Year	Application No	Address	Change	Use Class	Hectares	Sq M
2015	W2010/0053	27 High Street Hadley	CU	A1	45.00	-33
2015	W2010/0053	27 High Street Hadley	CU	C3	45.00	-33
2015	W2011/0170	The White Horse Inn Heath Hill Dawley	DEM	A4	0.26	-81
2015	W2011/0170	The White Horse Inn Heath Hill Dawley	NEW	C3	0.26	-81
2015	W2011/0632	Land at Audley Avenue Newport	NEW	A1		5084
2015	W2012/0385	Unit 3 125 King Street Wellington	CU	A1	0.04	238
2015	W2012/0385	Unit 3 125 King Street Wellington	CU	SG	0.04	-238
Ward Totals					90.60	4856
Apley Castle						
2015	W2013/0498	6-17 Staff Residence, Princess Royal Hospital, Grainger Drive, Apley, Telford, Shropshire,	CU	B1(a)	0.00	840
2015	W2013/0498	6-17 Staff Residence, Princess Royal Hospital, Grainger Drive, Apley, Telford, Shropshire,	CU	C2	0.00	-840
Ward Totals					0.00	0
Church Aston and Lilleshall						
2015	W2013/0887	Former Focus DIY Ltd, Audley Avenue, Newport, Shropshire, TF10 7DW	NEW	A1	0.00	1687
2015	W2013/0887	Former Focus DIY Ltd, Audley Avenue, Newport, Shropshire, TF10 7DW	DEM	A1	0.00	-2017
2015	W2014/0697	Willow Tree Cottage, Station Road, Newport, Shropshire, TF10 9LL	CU	B1(a)	0.00	37
2015	W2014/0697	Willow Tree Cottage, Station Road, Newport, Shropshire, TF10 9LL	EXT	B1(a)	0.00	29
Ward Totals					0.00	-264
College						
2015	W2007/0667	Telford Islamic Centre, 88 King Street Wellington	CU	D1	0.23	2440
2015	W2007/0667	Telford Islamic Centre, 88 King Street Wellington	CU	D2	0.23	-2440
2015	W2013/0306	27-31 High Street Wellington TF1 1JW	DEM	A1	0.00	-2250
2015	W2014/0146	45A High Street, Wellington, Telford, Shropshire, TF1 1JW	CU	A2	0.00	-35

CU - Change of Use EXT - Extension DEM - Demolition REP - Replacement Building MOB - Mobile Unit

Year	Application No	Address	Change	Use Class	Hectares	Sq M
2015	W2014/0146	45A High Street, Wellington, Telford, Shropshire, TF1 1JW	CU	A5	0.00	35
2015	W2014/0494	Greggs, 1-3 New Street, Wellington, Telford, Shropshire, TF1 1LU	CU	A3	18.18	18.18
2015	W2014/0970	The Kings Head, 141 High Street, Wellington, Telford, TF1 1JU	CU	A4	0.00	-129
2015	W2014/1097	Pipeline Merchants Ltd, 23 High Street, Wellington, Telford, Shropshire, TF1 1JW	CU	A1	0.00	-193
Ward Totals					18.64	-2553.82
Cuckoo Oak						
2015	W2013/0871	Unit 108C, Halesfield 13, Halesfield, Telford, Shropshire, TF7 4QR	DEM	B1(a)	1.45	-6547
2015	W2013/0871	Unit 108C, Halesfield 13, Halesfield, Telford, Shropshire, TF7 4QR	DEM	B2	1.45	-718
2015	W2013/0871	Unit 108C, Halesfield 13, Halesfield, Telford, Shropshire, TF7 4QR	DEM	B8	1.45	-777
2015	W2013/0871	Unit 108C, Halesfield 13, Halesfield, Telford, Shropshire, TF7 4QR	NEW	SG	1.45	669
2015	W2014/0678	Land at Halesfield 25, Halesfield, Telford, Shropshire	NEW	Other	0.58	756
Ward Totals					6.38	-6617
Dothill						
2015	W2013/0823	Blessed Robert Johnson college Whitchurch Road Wellington TF1 3DY	NEW	D1	0.00	8270
2015	W2014/1009	The Severns, Downing House, Dee Close, Dothill, Telford, Shropshire, TF1 3JR	EXT	D1	0.00	110
Ward Totals					0.00	8380
Edgmond						
2015	W2013/0625	Brook Farm Chetwynd Newport TF10 8BL	CU	C3	350.00	-103
2015	W2014/0489	Harper Adams University College, Edgmond, Newport, Shropshire, TF10 8NB Edgmond, N	NEW	D1	36.00	1485
Ward Totals					386.00	1382
Ercall						
2015	W2013/0265	The Mount, 1 Haygate Road, Wellington, Telford, Shropshire, TF1 1QX	CU	B1(b)	0.00	-1335
2015	W2013/0938	Holyhead Road Wellington TF6 5AB	NEW	C2	0.00	6870
2015	W2014/0153	Former Telford & Wrekin Council Offices, Highfield House, 47 Wrekin Road, Wellington, Tel	CU	B1(a)	0.55	-736
Ward Totals					0.55	4799

CU - Change of Use EXT - Extension DEM - Demolition REP - Replacement Building MOB - Mobile Unit

Year	Application No	Address	Change	Use Class	Hectares	Sq M
Ercall Magna						
2015	W2013/0022	Roden Nurseries Roden Lane Roden	CU	B8	1.70	1200
2015	W2014/0446	The Packing Shed, Poynton Road, Roden, Telford, TF6 6BN	CU	B2	0.00	590
2015	W2014/0446	The Packing Shed, Poynton Road, Roden, Telford, TF6 6BN	CU	B8	0.00	-591
2015	W2014/0512	White Gates, 4 Crudgington Green, Crudgington, Telford, Shropshire, TF6 6JY	CU	B1(c)	0.00	-70
2015	W2014/0512	White Gates, 4 Crudgington Green, Crudgington, Telford, Shropshire, TF6 6JY	CU	C1	0.00	70
Ward Totals					1.70	1199
Hadley and Leegomery						
2015	W2012/0583	Blockleys Bricks Ltd Sommerfeld Road Hadley	DEM	B1(a)	4.35	-89.7
2015	W2012/0583	Blockleys Bricks Ltd Sommerfeld Road Hadley	REP	B1(a)	4.35	89.7
2015	W2013/0720	Land Off Sommerfield Road (Former Blockleys Brick site) Trech Lock TF1 5RY	DEM	B1(a)	6.29	-155
2015	W2013/0720	Land Off Sommerfield Road (Former Blockleys Brick site) Trech Lock TF1 5RY	DEM	B2	6.29	-11963
2015	W2014/0375	Mill House, Hadley Park East, Hadley, Telford, Shropshire, TF1 6QJ	CU	B1(a)	0.00	33.11
Ward Totals					21.28	-12084.89
Haygate						
2015	W2013/1041	The Pheasant Inn Market Street Wellington TF1 1DT	EXT	A3	0.00	4
2015	W2014/0652	10A Crown Street, Wellington, Telford, Shropshire, TF1 1LP	CU	B1(a)	0.00	-79
2015	W2014/1098	23 Walker Street, Wellington, Telford, Shropshire, TF1 1BD	CU	B1(a)	0.00	222
2015	W2014/1098	23 Walker Street, Wellington, Telford, Shropshire, TF1 1BD	CU	D1	0.00	-727
Ward Totals					0.00	-580
Horsehay and Lightmoor						
2015	W2012/0292	Horsehay Limited, Horsehay House Bridge Road Horsehay	CU	B1(a)	0.13	-540
2015	W2014/0419	New Lawley Primary School, Off Martingale Way, Lawley, Telford, Shropshire	NEW	D1	0.00	1500
2015	W2014/0726	Telford & Wrekin Council For Voluntary Service, The Liz Yates Centre, Lightmoor Road, Lig	DEM	B1(a)	0.30	-144
2015	W2014/0726	Telford & Wrekin Council For Voluntary Service, The Liz Yates Centre, Lightmoor Road, Lig	CU	C3	0.30	-51
Ward Totals					0.73	765

CU - Change of Use EXT - Extension DEM - Demolition REP - Replacement Building MOB - Mobile Unit

Year	Application No	Address	Change	Use Class	Hectares	Sq M
Ironbridge Gorge						
2015	W2014/0450	Half Moon Inn, 174 Salthouse Road, Jackfield, Telford, Shropshire, TF8 7LP	EXT	A3	6710.00	43
Ward Totals					6710.00	43
Ketley and Oakengates						
2015	W2005/0906	WELLINGS LTD WASTE RECYCLING CENTRE, RO Ketley	NEW	Other	2.64	500
2015	W2013/0548	Library /Theatre Limes Walk Oakengates	CU	A3	0.27	10
2015	W2013/0782	5-7 Limes Walk Oakengates	CU	A3	0.00	137.96
2015	W2013/0782	5-7 Limes Walk Oakengates	CU	D1	0.00	-137.96
2015	W2013/0995	Maddocks Sports & Social Club, Church Street, Oakengates, Telford, Shropshire, TF2 6BP	CU	D2	0.00	-560
Ward Totals					2.91	-50
Lawley and Overdale						
2015	W2013/0612	Land within Box Road and Central Southwater Telford Town Centre	REP	A1	10.76	17933.3
2015	W2013/0612	Land within Box Road and Central Southwater Telford Town Centre	REP	A3	10.76	17933.3
2015	W2013/0612	Land within Box Road and Central Southwater Telford Town Centre	REP	A4	10.76	17933.3
2015	W2013/0612	Land within Box Road and Central Southwater Telford Town Centre	REP	A5	10.76	17933.3
2015	W2013/0612	Land within Box Road and Central Southwater Telford Town Centre	REP	D2	10.76	17933.3
Ward Totals					53.80	89666.5
Madeley						
2015	W2014/0924	Land North of 53 Court Street, Madeley, Telford, Shropshire, TF7 5DZ	NEW	D1	0.39	916
Ward Totals					0.39	916
Malinslee						
2015	W2010/0564	Southwater Regeneration Telford Town Centre	NEW	A1	0.73	0
2015	W2010/0564	Southwater Regeneration Telford Town Centre	NEW	A2	0.73	0
2015	W2010/0564	Southwater Regeneration Telford Town Centre	NEW	A3	0.73	0
2015	W2010/0564	Southwater Regeneration Telford Town Centre	NEW	A4	0.73	0
2015	W2010/0564	Southwater Regeneration Telford Town Centre	NEW	B1(a)	0.73	0

CU - Change of Use EXT - Extension DEM - Demolition REP - Replacement Building MOB - Mobile Unit

Year	Application No	Address	Change	Use Class	Hectares	Sq M
2015	W2014/0013	Land to rear of 87, King Street, Dawley, Telford, Shropshire, TF4 2AH	DEM	B1(c)	0.00	-27
2015	W2014/0013	Land to rear of 87, King Street, Dawley, Telford, Shropshire, TF4 2AH	NEW	B1(c)	0.00	59.5
2015	W2014/0013	Land to rear of 87, King Street, Dawley, Telford, Shropshire, TF4 2AH	NEW	B8	0.00	59.5
Ward Totals					3.65	92
Newport South						
2015	W2015/0047	Burton Borough School, Audley Avenue, Newport, Shropshire, TF10 7DS	EXT	D1	0.00	35
2015	W92/0970	Newport Silo Audley Avenue Newport	REP	B8	2.91	1340
Ward Totals					2.91	1375
Park						
2015	W2013/0645	St patricks School North Road Wellington TF1 3ER	DEM	D1	0.00	-159.1
2015	W2013/0645	St patricks School North Road Wellington TF1 3ER	REP	D1	0.00	114.3
2015	W2014/0383	The Centre for Positive Health, 11-13 Whitchurch Road, Wellington, Telford, TF1 3DS	CU	D1	0.00	-390
Ward Totals					0.00	-434.8
Priorslee						
2015	W2013/0774	Land off Teece Drive Priorsee	NEW	D1	8.64	7944
2015	W2015/0069	Clovelley, Church Street, St Georges, Telford, Shropshire, TF2 9NA	CU	D1	0.00	37
Ward Totals					8.64	7981
The Nedge						
2015	W2013/0661	Lord Silkin School Stirchley	DEM	D1	4.83	-9746
2015	W2013/0661	Lord Silkin School Stirchley	REP	D1	4.83	9611
2015	W2013/0923	The Lighting Industry Association Stafford Park 7	NEW	B1(b)	0.12	1255.2
2015	W2014/0292	Plot 1, Telford 54, Naird Road, Nedge Hill, Telford, Shropshire, TF3 3AH	NEW	B2	1.98	2406
2015	W2014/0480	Faintree Skoda, Stafford Park 1 Stafford Park Telford Shropshire TF3 3BD	EXT	B1(a)	0.59	204
2015	W2014/0480	Faintree Skoda, Stafford Park 1 Stafford Park Telford Shropshire TF3 3BD	DEM	B1(a)	0.59	-496
2015	W2014/0940	Site of Hollinswood Local Centre, Hollinswood, Telford, Shropshire	NEW	A1	0.00	376
2015	W2014/0940	Site of Hollinswood Local Centre, Hollinswood, Telford, Shropshire	NEW	A5	0.00	94

CU - Change of Use EXT - Extension DEM - Demolition REP - Replacement Building MOB - Mobile Unit

Year	Application No	Address	Change	Use Class	Hectares	Sq M
2015	W2014/0940	Site of Hollinswood Local Centre, Hollinswood, Telford, Shropshire	NEW	D1	0.00	320
2015	W2014/1103	Land north of Randlay Wood, off Queen Elizabeth Avenue, Hollinswood, Telford, Shropshir	CU	SG	0.00	0
Ward Totals					12.94	4024.2
Woodside						
2015	W2014/1124	Former Woodlands Primary School, Ironbridge Road, Madeley, Telford, Shropshire	NEW	D1	2.65	-2650
Ward Totals					2.65	-2650
Wrockwardine						
2015	W2012/0672	Upper Coalmoor Farm Moreton Coppice Coalmoor	EXT	B1(b)	0.03	379
Ward Totals					0.03	379
Wrockwardine Wood and Trench						
2015	W2013/0095	Euro Films Ltd, Units B1 & B2 Hortonwood 7 Hortonwood	EXT	B2	0.14	0
2015	W2013/0676		NEW	D1	0.00	8550
2015	W2015/0124	l2r Packaging Solutions Ltd, Innovation House, Hortonwood 30, Hortonwood, Telford, Shrop	EXT	B2	1.15	1414
Ward Totals					1.29	9964
Borough Totals					7325.09	110587.19

CU - Change of Use EXT - Extension DEM - Demolition REP - Replacement Building MOB - Mobile Unit

Appendix 6a - Employment Land New Build Not Started 2014/15

Year	Application No	Address	Use Class	Hectares	Sq M
2015	W2014/0181	Land at Hortonwood 50/60, Hortonwood Industrial Estate, Telford, Shropshire	B2	2.98	4005
Ward Totals				2.98	4005
Dawley Magna					
2015	W2014/1030	Metal & Waste Recycling Ltd, The Old Smithy, Lightmoor Road, Lightmoor, Telford, Shropshire, TF4 3QN	B8	1.10	875
2015	W2015/0095	The Mill, Heath Hill Industrial Estate, Dawley, Telford, Shropshire, TF4 2JX	B8	0.62	162
Ward Totals				1.72	1037
Donnington					
2015	W2014/0054	MOD Donnington B8 site Corner of Hortonwood Roundabout Corner of Hortonwood Roundabout	B1(a)	7.84	232
2015	W2014/0054	MOD Donnington B8 site Corner of Hortonwood Roundabout Corner of Hortonwood Roundabout	B8	7.84	26000
Ward Totals				15.68	26232
Ercall Magna					
2015	W2013/0541	Eton House Farm	B1(c)	0.00	96
2015	W2014/0274	Greenacre Farm, 13 Crudgington Green, Telford, Shropshire, TF6 6JY	B8	0.00	72
Ward Totals				0.00	168
Hadley and Leegomery					
2015	W2011/0023	Hadley Castle Works	B1(a)	12.60	3355
Ward Totals				12.60	3355
Ironbridge Gorge					
2015	W2014/0334	A G A Rayburn, Coalbrookdale Works, Wellington Road, Coalbrookdale, Telford, Shropshire, TF8 7DX	B2	3.64	416
Ward Totals				3.64	416
Ketley and Oakengates					

Year	Application No	Address	Use Class	Hectares	Sq M
2015	W2014/0152	Land at Waterloo Road, Ketley, Telford, Shropshire, TF1 5BA	B2	0.72	1742
Ward Totals				0.72	1742
Priorslee					
2015	W2014/0701	Greenways, Ashley Road, St Georges, Telford, Shropshire, TF2 9LF	B1(c)	0.00	102.5
Ward Totals				0.00	102.5
The Nedge					
2015	W2014/0969	Plot 4, Telford 54, Naird Lane, Nedge Hill, Telford, Shropshire	B1(a)	0.00	220
2015	W2014/0969	Plot 4, Telford 54, Naird Lane, Nedge Hill, Telford, Shropshire	B1(c)	0.00	929
Ward Totals				0.00	1149
Wrockwardine					
2015	W2014/0312	Charlton Farm, Charlton, Telford, Shropshire, TF6 5ES	B1(c)	0.00	1911
2015	W2014/0741	Barratts Field, Duncote Mill, Walcot, Telford, Shropshire, TF6 5ER	B1(c)	0.47	464.5
2015	W2014/0742	Barratts Field, Duncote Mill, Walcot, Telford, Shropshire, TF6 5ER	B1(c)	0.47	464.5
Ward Totals				0.93	2840
Borough Totals				38.27	41046.5

Appendix 6b - Other Employment Land Not Started 2014/15

Year	Application No	Address	Change	Use Class	Hectares	Sq M
2015	W2011/0577	The Old Printing Works Bath Road Ironbridge	DEM	B2	0.17	-108
2015	W2011/0853	Parklands House Audley Avenue Newport	DEM	B1(a)	1.37	-279
2015	W2011/0853	Parklands House Audley Avenue Newport	DEM	B1(c)	1.37	-650
2015	W2011/0853	Parklands House Audley Avenue Newport	REP	B1(c)	1.37	2931
2015	W2012/0191	1 Furnace Lane Trench	CU	B1(a)	0.04	-44
2015	W2012/0355	W Davies & Sons Mill Lane Kynnersley	DEM	B2	0.25	-280
2015	W2012/0916	Land adjacent 17 Water Lane Newport	DEM	B8	0.24	-683
Ward Totals					4.81	887
Apley Castle						
2015	W2011/0374	Wappenshall Wharf Wappenshall	CU	B8	0.37	-479.5
Ward Totals					0.37	-479.5
Arleston						
2015	W2014/0629	Communication House, 135 Watling Street, Wellington, Telford, Shropshire, TF1 2HN	CU	B1(a)	0.00	-138
Ward Totals					0.00	-138
Church Aston and Lilleshall						
2015	W2009/0161	Land at Moor Farm Kynnersley Drive, Lilleshall, Shropshire.	CU	B2	0.10	-126
2015	W2014/0492	Lubstree Park, Humber Lane, Telford, Shropshire, TF2 8LW	REP	B1(c)	0.00	1140
2015	W2014/0492	Lubstree Park, Humber Lane, Telford, Shropshire, TF2 8LW	DEM	B1(c)	0.00	-3560
2015	W2015/0030	Land between Preston Cottage 15 & Village Farm, Preston, Upon The Weald Moors, Telfor	DEM	B1(c)	0.09	-100
Ward Totals					0.19	-2646
Cuckoo Oak						
2015	W2012/0768	Unit 10 Halesfield 9 Halesfield	CU	B2	0.45	0
2015	W2014/1091	Dairy Crest Ltd, Haybrook, Halesfield 9, Halesfield, Telford, Shropshire, TF7 4QW	CU	B8	0.40	-1170

CU - Change of Use EXT - Extension DEM - Demolition REP - Replacement Building MOB - Mobile Unit

Year	Application No	Address	Change	Use Class	Hectares	Sq M
Ward Totals					0.85	-1170
Dawley Magna						
2015	W2013/0017	Unit 5, Holland Court High Street Dawley	CU	B1(a)	0.01	-46
Ward Totals					0.01	-46
Edgmond						
2015	W2013/0398	The workshop High Street Edgmond TF10 8JW	DEM	B2	0.01	-30
2015	W2014/0619	Sambrook Manor Farm, Sambrook, Telford, Shropshire, TF10 8AL	CU	B1(c)	0.10	-317
2015	W2014/0977	Barn adjacent The Birch Moors, Adeney, Newport, Shropshire	CU	B1(c)	0.00	-84
Ward Totals					0.11	-431
Ercall Magna						
2015	W2012/0323	Riverside Stars Lane Cold Hatton Heath	CU	B1(a)	0.17	69
2015	W2012/0323	Riverside Stars Lane Cold Hatton Heath	EXT	B1(a)	0.17	82
2015	W2012/0323	Riverside Stars Lane Cold Hatton Heath	CU	B1(c)	0.17	-69
2015	W2014/0714	Unit 3, The Quarry, Waters Upton, Telford, Shropshire, TF6 6NP	EXT	B2	0.37	148
2015	W2014/0722	Land adjacent Kynnersley Manor, Kynnersley, Telford, Shropshire, TF6 6DY	DEM	B1(c)	0.00	-3000
2015	W2015/0106	Gerizim, Long Lane, Sleapford, Telford, TF6 6HQ	CU	B8	0.01	121
Ward Totals					0.89	-2649
Hadley and Leegomery						
2015	W2012/0443	Bohle UK Ltd Hortonwood 30 Hortonwood	EXT	B8	0.51	1000
2015	W2013/0040	Faccenda Group Hortonwood 60 Hortonwood	EXT	B8	0.40	360
2015	W2014/0571	42 High Street, Hadley, Telford, Shropshire, TF1 5NG	CU	B1(a)	0.00	-113
Ward Totals					0.91	1247
Haygate						
2015	W2012/0796	Orchard House Spring Hill Wellington	MOB	B1(a)	0.02	150.7
Ward Totals					0.02	150.7

CU - Change of Use EXT - Extension DEM - Demolition REP - Replacement Building MOB - Mobile Unit

Year	Application No	Address	Change	Use Class	Hectares	Sq M
Ironbridge Gorge						
2015	W2013/0800	38 High Street Coalport TF8 7HT	CU	B1(c)	0.00	76.8
2015	W2013/0800	38 High Street Coalport TF8 7HT	CU	B8	0.00	-76.8
2015	W2014/0334	A G A Rayburn, Coalbrookdale Works, Wellington Road, Coalbrookdale, Telford, Shropshir	DEM	B2	3.64	-416
2015	W2014/0649	Woodside House Barns, Woodside, Coalbrookdale, Telford, Shropshire, TF8 7ED	DEM	B1(c)	400.00	-7
2015	W2014/0649	Woodside House Barns, Woodside, Coalbrookdale, Telford, Shropshire, TF8 7ED	CU	B1(c)	400.00	-360
Ward Totals					803.64	-783
Ketley and Oakengates						
2015	W2013/0585	Autoscan QA Ltd, Autoscan House, Charlton Street Oakengates TF2 6BT	CU	B1(a)	0.00	-449.4
2015	W2014/0414	Wombridge Hall, New Street, Oakengates, Telford, Shropshire, TF2 6ES	CU	B8	0.00	-228
2015	W2015/0122	Castlebridge Plant, Ketley Business Park, Ketley, Telford, Shropshire, TF1 5JD	CU	B8	0.00	-1569
Ward Totals					0.00	-2246.4
Lawley and Overdale						
2015	W2012/0059	Land at Brodie House Central Square Telford Town Centre	DEM	B1(a)	0.75	-600
2015	W2012/0777	Darby House Lawn Central Telford Town Centre	EXT	B1(a)	1.35	11
Ward Totals					2.10	-589
Madeley						
2015	W2013/0469	Upper House Madeley 16 Church Street Madeley TF7 5BW	CU	B1(a)	0.00	-175
2015	W2014/0162	Unit 8, Madeley Industrial Estate, Station Road, Madeley, Telford, Shropshire, TF7 5EF	CU	B8	0.00	-179.95
2015	W2014/0338	Telford & Wrekin NHS Primary Care Trust, 66 - 67 High Street, Madeley, Telford, Shropshir	CU	B1(a)	0.00	-384
2015	W2014/0357	Majestic Distribution Bitec, Tweedale North, Madeley, Telford, Shropshire, TF7 4JT	EXT	B8	0.00	80
Ward Totals					0.00	-658.95
Muxton						
2015	W2012/0658	The Old Granary, Craft Way Wellington Road Muxton	EXT	B1(a)	0.00	78
2015	W2012/0658	The Old Granary, Craft Way Wellington Road Muxton	CU	B1(a)	0.00	60
2015	W2012/0939	Granville Site Offices Redhill	EXT	B1(a)	0.06	81

CU - Change of Use EXT - Extension DEM - Demolition REP - Replacement Building MOB - Mobile Unit

Year	Application No	Address	Change	Use Class	Hectares	Sq M
Ward Totals					0.06	219
Newport South						
2015	W2009/0312	Parkland House & Classic Furniture Audley Avenue Newport	REP	B1(c)	2.92	2931
2015	W2009/0312	Parkland House & Classic Furniture Audley Avenue Newport	REP	B2	2.92	2931
2015	W2013/0889	Site of Units 1 -5 Audley Avenue Business Park, Audley Avenue, Newport, Shropshire	CU	B2	0.00	-910
2015	W92/0970	Newport Silo Audley Avenue Newport	DEM	B8	2.91	-1340
Ward Totals					8.76	3612
Newport West						
2015	W2010/0019a	Advertiser Printing Works, Bellmans Yard, High Street Newport, Shropshire.	CU	B1(c)	0.09	-100
2015	W2012/1014	6 Midgley Court High Street Newport	CU	B1(a)	0.02	-177
Ward Totals					0.11	-277
St. Georges						
2015	W2013/0901	Units 7-9, Gower Street Industrial Estate, Gower Street, St Georges, Telford, Shropshire, T	CU	B1(c)	0.28	-600
Ward Totals					0.28	-600
The Nedge						
2015	W2009/0439	Magna House Stafford Park 9 Stafford Park, Telford, Shropshire.	EXT	B2	2.56	145
2015	W2010/0626	Kendall Holdings Ltd Stafford Park 6 Stafford Park	REP	B1(a)	2.00	1100
2015	W2010/0626	Kendall Holdings Ltd Stafford Park 6 Stafford Park	DEM	B1(a)	2.00	-280
2015	W2012/0094	Ace House Stafford Park 6 Stafford Park	CU	B2	0.60	2436
2015	W2012/0094	Ace House Stafford Park 6 Stafford Park	CU	B8	0.60	-2436
2015	W2013/0161	Unit C2 Stafford Park 4 Stafford Park	CU	B8	0.30	459.8
2015	W2013/0838	Unit 5 Stafford Park 12	CU	B8	0.20	-1021
2015	W2013/1020	Defence Support Group (DSG), Sapphire House, Stafford Park 6, Stafford Park, Telford, Sh	CU	B1(a)	1.39	-9000
2015	W2014/0262	Grainger and Worrall Machining, Stafford Park 13, Telford, Shropshire, TF3 3AZ	EXT	B1(a)	0.51	1057
2015	W2014/0698	Entanet International Ltd, Stafford Park 6, Stafford Park, Telford, Shropshire, TF3 3AT	REP	B8	0.00	196520
2015	W2014/0698	Entanet International Ltd, Stafford Park 6, Stafford Park, Telford, Shropshire, TF3 3AT	REP	B8	0.00	-196520

CU - Change of Use EXT - Extension DEM - Demolition REP - Replacement Building MOB - Mobile Unit

Year	Application No	Address	Change	Use Class	Hectares	Sq M
Ward Totals					10.15	-7539.200
Wrockwardine						
2015	W2014/0687	Land North of Dunelm, Rodington Heath, Telford, Shropshire	CU	B1(c)	0.30	-3000
2015	W2015/0024	The Piggeries, Grove Lane, Rodington, Telford, Shropshire	CU	B1(c)	0.12	-200
2015	W2015/0118	Site of The Hill Farm, Isombridge Lane, Longdon On Tern, Telford, Shropshire	CU	B1(c)	0.00	60
Ward Totals					0.42	-3140
Wrockwardine Wood and Trench						
2015	W2012/0581	Unit D3 Hortonwood 10 Hortonwood	CU	B8	0.04	-370
2015	W2014/0627	Heinz, Hortonwood 2, Telford, Shropshire, TF1 7XW	EXT	B2	0.00	90
2015	W2014/0627	Heinz, Hortonwood 2, Telford, Shropshire, TF1 7XW	REP	B2	0.00	-53.5
2015	W2015/0124	I2r Packaging Solutions Ltd, Innovation House, Hortonwood 30, Hortonwood, Telford, Shrop	EXT	B8	1.15	1413
Ward Totals					1.19	1079.5
Borough Totals					834.86	-16197.85

CU - Change of Use EXT - Extension DEM - Demolition REP - Replacement Building MOB - Mobile Unit

Appendix 6c - Other Non-residential Land Not Started 2014/15

Year	Application No	Address	Change	Use Class	Hectares	Sq M
2015	W2011/0157	Gower Street Youth Club Gower Street St Georges	CU	D1	0.50	-400
2015	W2011/0853	Parklands House Audley Avenue Newport	REP	SG	1.37	413
2015	W2011/0936	Former Tank Depot Haybrook, Halesfield 9 Halesfield	NEW	SG	2425.00	300
Ward Totals					2426.87	313
Apley Castle						
2015	W2011/0374	Wappenshall Wharf Wappenshall	CU	D1	0.37	479.5
Ward Totals					0.37	479.5
Church Aston and Lilleshall						
2015	W2009/0161	Land at Moor Farm Kynnersley Drive, Lilleshall, Shropshire.	CU	C1	0.10	126
2015	W2012/0859	Land off A41/A518 Roundabout Newport	NEW	A3	2.90	150.5
2015	W2012/0859	Land off A41/A518 Roundabout Newport	NEW	C1	2.90	1242
2015	W2012/0859	Land off A41/A518 Roundabout Newport	NEW	SG	2.90	430.6
2015	W2014/0020	Lilleshall Grange Abbey Road Lilleshall TF10 9HL	CU	B3-B7	0.23	-1000
2015	W2014/0020	Lilleshall Grange Abbey Road Lilleshall TF10 9HL	DEM	SG	0.23	1000
Ward Totals					9.26	1949.1
College						
2015	W2013/0877	the Old Hall School Stanley Road Wellington TF1 3BL	NEW	D1	0.00	453
2015	W2013/0994	8 Church Street Wellington TF1 1DG	CU	A2	350.00	-142.8
2015	W2013/0994	8 Church Street Wellington TF1 1DG	CU	C3	350.00	142.8
Ward Totals					700.00	453
Cuckoo Oak						
2015	W2012/0768	Unit 10 Halesfield 9 Halesfield	CU	D2	0.45	0
Ward Totals					0.45	0

CU - Change of Use EXT - Extension DEM - Demolition REP - Replacement Building MOB - Mobile Unit

Year	Application No	Address	Change	Use Class	Hectares	Sq M
Dawley Magna						
2015	W2010/0235	The Lord Hill Inn High Street Dawley TF4 2EX	CU	A4	0.01	-122.01
2015	W2014/1049	40 High Street, Dawley, Telford, Shropshire, TF4 2EX	CU	A1	0.00	-66
2015	W2014/1049	40 High Street, Dawley, Telford, Shropshire, TF4 2EX	CU	A5	0.00	66
Ward Totals					0.01	-122.01
Donnington						
2015	W2014/0621	The Acorns, St Georges Road, Donnington Wood, Telford, Shropshire, TF2 7NJ	CU	D1	0.00	192
Ward Totals					0.00	192
Edgmond						
2015	W2013/0398	The workshop High Street Edgmond TF10 8JW	NEW	C3	0.01	-30
2015	W2013/0708	The Lamb Inn 29 Shrewsbury Road Edgmond TF10 8HU	EXT	A3	0.00	84
2015	W2014/0597	Londis Edgmond Village Stores And Post Office, 27 High Street, Edgmond, Newport, Shrop	EXT	A1	87.00	2
2015	W2014/0619	Sambrook Manor Farm, Sambrook, Telford, Shropshire, TF10 8AL	CU	C3	0.10	317
2015	W2014/0824	Sutherland Arms, Tibberton, Newport, Shropshire, TF10 8NN	EXT	A3	0.00	23
2015	W2014/1101	Chetwynd Grange Farm, Marsh Road, Edgmond, Newport, Shropshire, TF10 8EP	NEW	Other	0.00	930.9
Ward Totals					87.11	1326.9
Hadley and Leegomery						
2015	W2012/0640	Greenhous Group Ltd Trench Lock Hadley	NEW	SG	0.00	802
2015	W2013/0567		CU	SG	0.00	-5300
2015	W2014/0890	Laburnums 19 Haybridge Road, Hadley, Telford, Shropshire, TF1 5LR	REP	C2	0.00	0
Ward Totals					0.00	-4498
Haygate						
2015	W2014/1138	5 Church Street, Wellington, Telford, Shropshire, TF1 1DD	EXT	A1	0.07	22
Ward Totals					0.07	22

CU - Change of Use EXT - Extension DEM - Demolition REP - Replacement Building MOB - Mobile Unit

Year	Application No	Address	Change	Use Class	Hectares	Sq M
Horsehay and Lightmoor						
2015	W2013/0902	Hughes Transport Ltd, The Garage, Wellington Road, Horsehay, Telford, Shropshire, TF4 3	NEW	C3	0.65	-697
2015	W2014/0559	Woodlands Farm, Woodlands Lane, Horsehay, Telford, Shropshire, TF4 3QF	CU	Other	2800.00	-2800
Ward Totals					2800.65	-3497
Ironbridge Gorge						
2015	W2011/1102	Land off, Beech Road, Madeley, Telford, Shropshire	NEW	Other	5.98	432
2015	W2011/1102	Land off, Beech Road, Madeley, Telford, Shropshire	DEM	Other	5.98	-820
2015	W2013/0050	Tea Rooms 17 High Street Coalport	CU	A3	0.05	-56
2015	W2013/0050	Tea Rooms 17 High Street Coalport	CU	C1	0.05	56
2015	W2013/0215	Land Adjacent, The Coach House, Strethill Road, Coalbrookdale, Telford, Shropshire	CU	NK	700.00	-700
2015	W2013/0215	Land Adjacent, The Coach House, Strethill Road, Coalbrookdale, Telford, Shropshire	CU	SG	700.00	700
2015	W2014/0056	Crown Inn, 10 Hodge Bower, Ironbridge, Telford, Shropshire, TF8 7QG	CU	C3	0.22	-2298
2015	W2014/0140	Beeches Pool, Beech Road, Ironbridge, Telford, Shropshire, TF8 7PA	NEW	Other	0.37	60
2015	W2014/0212	The Grove Inn, Wellington Road, Coalbrookdale, Telford, Shropshire, TF8 7DX	CU	C3	0.14	-500
2015	W2014/0782	Land at 6 Strethill Road, Coalbrookdale, Telford, Shropshire, TF8 7DP	CU	C3	450.00	-450
2015	W2014/0782	Land at 6 Strethill Road, Coalbrookdale, Telford, Shropshire, TF8 7DP	CU	D1	450.00	450
2015	W2014/0844	Central Cafe, 32A High Street, Ironbridge, Telford, TF8 7AD	EXT	A3	272.00	42
Ward Totals					2584.79	-3084
Ketley and Oakengates						
2015	W2012/0056	Land at Dream Car Sale, Leonard Street and Land adjacent to 39 Stafford Road, Oakengat	DEM	SG	0.00	-330
2015	W2013/0291	45 Market Street Oakengates	CU	A1	0.00	-70
2015	W2013/0291	45 Market Street Oakengates	CU	A3	0.00	70
2015	W2013/0585	Autoscan QA Ltd, Autoscan House, Charlton Street Oakengates TF2 6BT	CU	SG	0.00	449.4
2015	W2014/0414	Wombridge Hall, New Street, Oakengates, Telford, Shropshire, TF2 6ES	CU	A1	0.00	228
2015	W2014/1067	Former 17-19 Stafford Road, Oakengates, Telford, Shropshire, TF2 6JH	DEM	A2	0.00	-65
2015	W2015/0045	Florace, Station Fields, Oakengates, Telford, Shropshire, TF2 6DH	CU	A1	0.00	100

CU - Change of Use EXT - Extension DEM - Demolition REP - Replacement Building MOB - Mobile Unit

Year	Application No	Address	Change	Use Class	Hectares	Sq M
2015	W2015/0122	Castlebridge Plant, Ketley Business Park, Ketley, Telford, Shropshire, TF1 5JD	EXT	SG	0.00	108
2015	W2015/0122	Castlebridge Plant, Ketley Business Park, Ketley, Telford, Shropshire, TF1 5JD	CU	SG	0.00	1569
Ward Totals					0.00	2059.4
Lawley and Overdale						
2015	W2012/0059	Land at Brodie House Central Square Telford Town Centre	NEW	A1	0.75	2212.25
2015	W2012/0059	Land at Brodie House Central Square Telford Town Centre	DEM	A1	0.75	-600
2015	W2012/0059	Land at Brodie House Central Square Telford Town Centre	DEM	A2	0.75	-600
2015	W2012/0059	Land at Brodie House Central Square Telford Town Centre	NEW	A3	0.75	2212.25
2015	W2012/0059	Land at Brodie House Central Square Telford Town Centre	NEW	A4	0.75	2212.25
2015	W2012/0059	Land at Brodie House Central Square Telford Town Centre	NEW	A5	0.75	2212.25
2015	W2012/0059	Land at Brodie House Central Square Telford Town Centre	NEW	D2	0.75	7126
2015	W2013/0052	Lawley Medical Centre, Birchfield House Farriers Green Lawley Bank	EXT	D1	0.43	86
2015	W2013/0612	Land within Box Road and Central Southwater Telford Town Centre	DEM	A1	10.76	-107600
Ward Totals					16.44	-92739
Madeley						
2015	W2010/0010	4 Court Street, Madeley TF7 5EB	CU	SG	37.00	37
2015	W2013/0355	Telford Ski Centre Court Road Madeley TF7 5DZ	EXT	D2	0.81	162
2015	W2014/0116	Tesco Stores Ltd, 5 Russell Square, Madeley, Telford, Shropshire, TF7 5AB	CU	A1	0.00	-10
2015	W2014/0116	Tesco Stores Ltd, 5 Russell Square, Madeley, Telford, Shropshire, TF7 5AB	CU	A5	0.00	10
2015	W2014/0122	The Shire Coach House, Burnt Hall Lane, Madeley, Telford, Shropshire, TF7 5ER	CU	C3	0.00	0
2015	W2014/0162	Unit 8, Madeley Industrial Estate, Station Road, Madeley, Telford, Shropshire, TF7 5EF	CU	D2	0.00	-179.95
2015	W2014/0338	Telford & Wrekin NHS Primary Care Trust, 66 - 67 High Street, Madeley, Telford, Shropshir	CU	A2	0.00	192
Ward Totals					37.81	211.05
Muxton						
2015	W2012/0936	Shropshire Golf Centre and Driving Range Muxton Lane Muxton TF2 8PQ	EXT	A3	0.81	14
2015	W2012/0936	Shropshire Golf Centre and Driving Range Muxton Lane Muxton TF2 8PQ	EXT	C1	0.81	2048

CU - Change of Use EXT - Extension DEM - Demolition REP - Replacement Building MOB - Mobile Unit

Year	Application No	Address	Change	Use Class	Hectares	Sq M
2015	W2012/0936	Shropshire Golf Centre and Driving Range Muxton Lane Muxton TF2 8PQ	EXT	D2	0.81	958
2015	W2012/0936	Shropshire Golf Centre and Driving Range Muxton Lane Muxton TF2 8PQ	DEM	Other	0.81	-1517
2015	W2014/0846	Granville Farm, Grange Lane, Redhill, Telford, Shropshire, TF2 9PA	CU	Other	0.00	-9100
Ward Totals					3.24	-7597
Newport North						
2015	W2014/0317	Preston Trust Homes Charity, 74A Forton Road, Newport, Shropshire, TF10 8BT	EXT	C3	0.50	17
Ward Totals					0.50	17
Newport South						
2015	W2009/0312	Parkland House & Classic Furniture Audley Avenue Newport	REP	A1	2.92	3252
2015	W2009/0312	Parkland House & Classic Furniture Audley Avenue Newport	REP	Other	2.92	413
2015	W2012/0316	Audley Court Audley Avenue Newport TF10 7DR	EXT	D2	1.33	266
2015	W2013/0889	Site of Units 1 -5 Audley Avenue Business Park, Audley Avenue, Newport, Shropshire	NEW	A1	0.00	117
2015	W2014/0333	Land corner of, Stafford Road/A41, Newport, Shropshire	NEW	C2	0.00	9196
Ward Totals					7.18	13244
Newport West						
2015	W2010/0019a	Advertiser Printing Works, Bellmans Yard, High Street Newport, Shropshire.	CU	D2	0.09	100
2015	W2013/0482	Clarke Pharmaciats 75 Upper Bar Newport TF10 7AW	DEM	A1	15.00	-15
2015	W2013/0482	Clarke Pharmaciats 75 Upper Bar Newport TF10 7AW	EXT	A1	15.00	30
2015	W2014/0006	Hesbrooks HGV Yard, Avenue Road, Newport, Shropshire, TF10 7EA	CU	SG	0.10	-998
2015	W2014/0076	Land fronting, 62 High Street, Newport, Shropshire	CU	A1	0.00	30
2015	W2015/0038	74 High Street, Newport, Shropshire, TF10 7BA & car parks to Newport Arms Hotel, 4-6 Lo	CU	A1	0.00	-32.37
2015	W2015/0038	74 High Street, Newport, Shropshire, TF10 7BA & car parks to Newport Arms Hotel, 4-6 Lo	CU	SG	0.00	32.37
Ward Totals					30.19	-853
Park						
2015	W2012/0603	The Priory Nursing Home Spring Hill Wellington	EXT	C2	0.44	237

CU - Change of Use EXT - Extension DEM - Demolition REP - Replacement Building MOB - Mobile Unit

Year	Application No	Address	Change	Use Class	Hectares	Sq M
Ward Totals					0.44	237
Priorslee						
2015	W2014/0034	Stone House Shifnal Road Priorslee	EXT	C1	0.00	84.1
Ward Totals					0.00	84.1
St. Georges						
2015	W2013/0402	Wesley House 4 Station Hill St Georges TF2 9AA	CU	D1	0.00	554
2015	W2013/0402	Wesley House 4 Station Hill St Georges TF2 9AA	CU	SG	0.00	-554
2015	W2014/0736	The Red Lion Inn, New Road, Wrockwardine Wood, Telford, Shropshire, TF2 7AA	CU	A4	0.00	-238
Ward Totals					0.00	-238
The Nedge						
2015	W2013/0161	Unit C2 Stafford Park 4 Stafford Park	CU	A1	0.30	-459.8
2015	W2013/0578	Single Source Stafford Park 6 TF3 3AT	NEW	NK	0.00	9000
2015	W2013/0739	The Nedge Tavern Nazrd Lane Nedge Hill Telford TF3 1FE	CU	SG	0.30	600
2015	W2013/0808	Grange Park Primary School Calcott Stichley TF3 1YQ	DEM	D1	1.31	-2188
2015	W2013/0838	Unit 5 Stafford Park 12	CU	SG	0.20	1021
2015	W2013/1020	Defence Support Group (DSG), Sapphire House, Stafford Park 6, Stafford Park, Telford, Sh	CU	C1	1.39	9000
Ward Totals					3.50	16973.2
Wrockwardine						
2015	W2012/0912	Orchard Field The Mount Guest House Dawley Road, Lawley, Telford, Shropshire.	MOB	C1	0.19	3200
2015	W2014/0251	Overley Hall School, Overley, Telford, Shropshire, TF6 5HE	NEW	A1	0.00	35
2015	W2014/0344	Overley Hall School, Overley, Telford, Shropshire, TF6 5HE	EXT	D1	0.00	78
2015	W2014/0429	A B C Day Nursery, The Village School, Wrockwardine, Telford, Shropshire, TF6 5DG	CU	D1	0.00	-257
2015	W2014/0859	Sunnymeade Kennels And Cattery, B4394, Allscott, Telford, Shropshire, TF6 5EQ	CU	SG	0.00	2556
Ward Totals					0.19	5612

CU - Change of Use EXT - Extension DEM - Demolition REP - Replacement Building MOB - Mobile Unit

Year	Application No	Address	Change	Use Class	Hectares	Sq M
Wrockwardine Wood and Trench						
2015	W2012/0581	Unit D3 Hortonwood 10 Hortonwood	CU	D1	0.04	370
2015	W2014/0129	180 Wombridge Road, Trench, Telford, Shropshire, TF2 6PU	CU	A1	0.00	36.7
2015	W2014/0222	Duke of York, Trench Road, Trench, Telford, Shropshire, TF2 7DP	CU	A4	0.00	-65
2015	W2014/0222	Duke of York, Trench Road, Trench, Telford, Shropshire, TF2 7DP	CU	SG	0.00	65
Ward Totals					0.04	406.7
Borough Totals					8709.10	-69048.06

CU - Change of Use EXT - Extension DEM - Demolition REP - Replacement Building MOB - Mobile Unit

APPENDIX 7 - RESIDENTIAL SECTION 7(1) CONSENTS

Application Number	Address	Estimated Yield
T91/0242	The Hem (Nedge)	250
T74/0082a	Colliers Way/Acer Close	163
T86/0021	Donnington Wood (Rem)	85
T88/0216b	Land at Priorslee Road	75
T89/0223	Land adjoining BRJ School	70
T78/0114a	LAND OFF, STANIER DRIVE, MADELEY (RP1)	70
T74/0076a	Land off Majestic Way	65
T78/0114c	LAND OFF, STANIER DRIVE, MADELEY (RP2)	30
T68/0020b	Land off Randlay Avenue	26
T88/0216a	Land at Priorslee Road	25
S71/10	LAND AT, ST GEORGES ROAD, DONNINGTON, WROCKWARDINE WOOD	24
T88/0229w	Arleston Lane East	15
T68/0020a	Land off Randlay Avenue	13
T80/0001	Ketley Bank	11
T88/0229v	Arleston Lane West	6
T74/0082c	Park Lane	5
T91/0236d	Pool Hill Road	4
T91/0236a	Station Road	2
		939