

The journey of your food waste

Your food waste is recycled in an anaerobic digestion facility, where there is no oxygen and tiny microorganisms break down the food waste. The process produces biogas to power homes and a rich fertiliser for growing crops.

1 USE YOUR CADDIES FOR FOOD WASTE



2 WE COLLECT FROM KERBSIDE



3 WE TAKE IT TO OUR TRANSFER STATION



4 WE THEN BULK AND LOAD FOR TRANSPORT



5 IT THEN GOES TO AN ANAEROBIC DIGESTION FACILITY



6 WHERE ENERGY IS GENERATED AND FERTILISER PRODUCED FOR FARMLAND



Why recycle your food waste?

It's always better to reduce waste, but choosing the silver caddy for any food you can't use up has multiple benefits:

- your food waste gets collected weekly
- it creates more space in the red top bin
- it's better for the planet than putting it in your red top bin.



Need a caddy?

If you need to order replacement or additional containers visit [telford.gov.uk/recycleonline](https://www.telford.gov.uk/recycleonline)



my
Telford

Use the MyTelford app for easy access to report issues and request services. Available on all Android and iOS devices.

www.telford.gov.uk/mytelford

Sign up for weekly bin day reminder emails at: www.telford.gov.uk/bindayfinder



Telford & Wrekin
Co-operative Council

Protect, care and invest
to create a better borough

Recycle more with
VEOLIA

Your weekly food waste recycling service

Do good things with your food waste



How to use your weekly food waste collection service

How to use your caddies

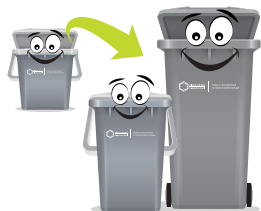
STEP 1

You can line your caddy with newspaper, kitchen roll, nothing at all, or you can purchase compostable caddy liners which are widely available.*



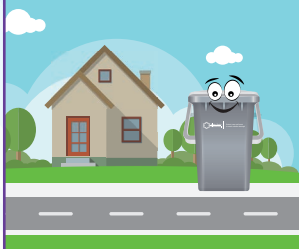
STEP 2

Use the small caddy to collect food waste in your kitchen and transport it to your larger outdoor caddy (or a communal silver top wheelie bin if you have communal bins).



STEP 3

Present your outdoor caddy at the kerbside along with your other bins on collection day. **Please place it in front of the other containers so it can be seen by the crews.**



Please put your caddy out for collection before **7am** each week on your normal bin day.

* If you have a communal food waste bin, you can request liners for your kitchen caddy at: www.telford.gov.uk/recycleonline

Your silver containers

✓ YES PLEASE



food waste



✓ Cheese & eggs



✓ Bread & pastries



✓ Fruit & veg



✓ Meat & fish



✓ Mouldy or out of date food



✓ Tea & coffee grounds



✓ All uneaten food including plate scrapings

X NO THANKS

X Plastic packaging
X Liquids

X Oils or fats
X Pet mess/litter/bedding
X Cardboard



www.telford.gov.uk/recyclefood



Did you know

if you recycle six tea bags it will make enough energy to put the kettle on for another cup of tea.



HANDLE DOWN
Your bin is open



HANDLE UP
Your bin is locked

You can secure your outdoor caddy by closing the lid and moving the handle to an upright position.

