



Telford & Wrekin
Co-operative Council

Protect, care and invest
to create a better borough

Domestic Abuse and Violence Against Women and Girls Strategy 2026-2028

Foreword

Much has been achieved during the last three years by working together to prevent and reduce domestic abuse in our communities and ensure that everyone who is affected can access the help and services they need. Telford and Wrekin is committed to a Public Health approach to reducing Domestic Violence and Violence Against Women and Girls, with a specific focus on reducing the incidence and impact on adults, children and young people through prevention and Early Help. As a result, there has been a significant increase in the number of adult survivors and children and young people receiving specialist support and domestic abuse perpetrators commencing behaviour change programmes. The number of recorded crimes and non-crime incidents in Telford and Wrekin with Domestic Abuse or Violence Against Women and Girls markers have reduced over the last three years. However, much remains to be done. The number of recorded crimes and non-crime incidents categorised as Other Sexual Offences and Honour Based Violence have increased. Over 1 in 5 recorded crimes and non-crime incidents in Telford and Wrekin have a Domestic Abuse marker (22%).

In December 2025 the government launched an ambitious national strategy, Freedom from Violence and Abuse, to half violence against women and girls over the next ten years. However, no additional funding has been allocated to local authorities to achieve this aim.

However, Telford & Wrekin Council remains committed to working with partners to prevent and reduce domestic violence and other forms of violence against women and girls in our communities.

This new Strategy retains the four pillars from the 2023-2025 Strategy to plan, deliver and evaluate interventions: working in partnership to achieve change, prevention and early intervention, providing integrated whole family services and specialist support, and providing timely and responsive protection and justice. The new strategy sets out some of our key achievements under these four pillars over the last three years, and our four priority commitments for each pillar for the next three years. The Telford & Wrekin Domestic Abuse Local Partnership Board will be responsible for delivering these commitments for our residents.

Finally, a huge thank you to all our partners and residents with lived experience who support and steer the domestic abuse programme. Your commitment to this agenda shines through our partnership work and makes us stronger - together we can end domestic abuse and violence against women and girls in our communities in all its forms, and ensure that everyone who is affected can access the help and services they need.



Jo Britton
Executive Director of
Children's Services,
Children's Safeguarding
and Family Support and
Chair of Telford & Wrekin
Domestic Abuse Local
Partnership Board (DALP)



Cllr Kelly Middleton
Cabinet Member for
Public Health & Healthier
Communities, Telford &
Wrekin Council

Context

Domestic abuse and violence against women and girls often remain unreported for a variety of reasons and so data on recorded crime data and non-crime incidents underrepresents the true volume of these incidents. However, data over several years can indicate overall trends.

The number of recorded crimes and non-crime incidents in Telford and Wrekin with a Domestic Abuse marker fell by 4% from 2023 to 2025. The number of recorded crimes and non-crime incidents with a VAWG marker fell by 8% during the same period.

Also recorded Stalking & Harassment offences and incidents reduced by 12% and recorded Rapes by 7% during the same period. However, from 2023 to 2025, recorded Other Sexual Offences and related non-crime incidents increased by 14% and recorded instances of Honour Based Abuse, while relatively small, increased fourfold.

Telford and Wrekin recorded crimes and non-crime incidents*	2023	2024	2025
Domestic Abuse	5,189	4,828	4,960
VAWG Offences	4,406	3,982	4,045
Stalking & Harassment	2,134	1,880	2,185
Other Sexual Offences	432	425	493
Rape	284	246	263
Honour Based Violence	3	10	12

*A non-crime incident is when police have been called to an incident, for example by a neighbour, but after speaking to everyone present, are satisfied that no substantive criminal offences are apparent and no further action is taken, except for recording as a non-crime incident. In the event of domestic abuse and VAWG non-crime incidents, any appropriate referrals are also made.

Survivors experiences

““ I don't think I could have felt safe in my home without the target hardening project. It helped me go from the safety of refuge to mainstream housing without the safety measures I would have not felt safe. ””

““ You listened without judging me and helped me see that what I was going through wasn't my fault. ””

““ Your calming presence has been a source of strength during the hearings. I will always remember how you hold my hand and softly say, "You can do this," while providing me with tissues to wipe my tears and water to drink. ””

““ I joined this group and really enjoyed it... everyone was included and made to feel welcome and helped to speak up. ””

““ My daughter's confidence has grown so much since starting sessions. She's calmer and happier now. The support has made a real difference at home. ””

““ You made me feel like I wasn't alone, and that meant everything to me. I can finally see a way forward. ””

““ I received two ring doorbells to the front and rear of my property and it made me feel more safe and that my property was secure which helped with my anxiety. ””

““ I felt nervous when I first joined the group. When I got to know the group I really enjoyed it. We all had a laugh and a cry. ””

““ I honestly don't know where we'd be without this support. My son feels listened to for the first time, and it's made a huge difference at home. ””

““ When I first came, I didn't even know what help looked like. Now I've got my own place and I feel like I can breathe again. ””

Definitions

Domestic Abuse

The Domestic Abuse Act 2021 defines domestic abuse as any incident of controlling, coercive or threatening behaviour or abuse between those aged 16 or over who are or have been intimate partners or family members regardless of their gender or sexuality.

Examples of domestic abuse include:

- physical or sexual abuse;
- violent or threatening behaviour;
- controlling or coercive behaviour;
- economic or financial abuse;
- forced marriage or honour-based violence;
- psychological, emotional or other abuse;
- female genital mutilation; and
- child to parent and carer abuse.

Children who see, hear or otherwise experience the abuse are also defined as victims of the abuse.

Violence Against Women and Girls

Recognising that all genders are affected by intimate partner abuse, women and girls are disproportionately affected. Violence against women and girls (VAWG) is any form of violence by men and boys against women and girls. The drivers of VAWG include:

- harmful gender stereotypes;
- patriarchal cultural norms;
- online misogyny;
- economic factors; and
- conflicts, crises and displacement.

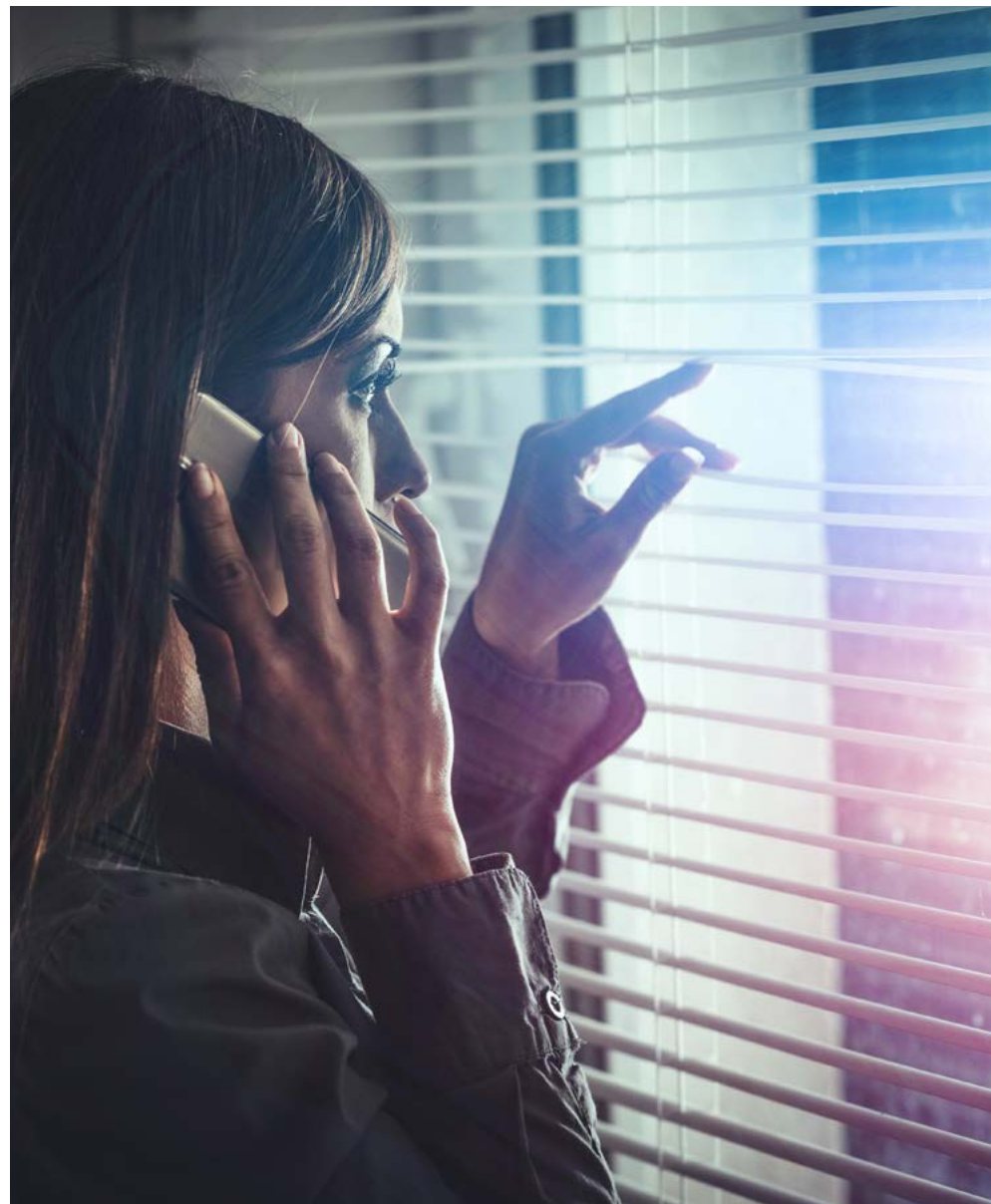
Women and girls who face other forms of inequality as a result of their race, ethnicity, social class and economic status, religion, sexuality, disability, physical and mental health or age, are more likely to experience violence and less likely to access justice and support.



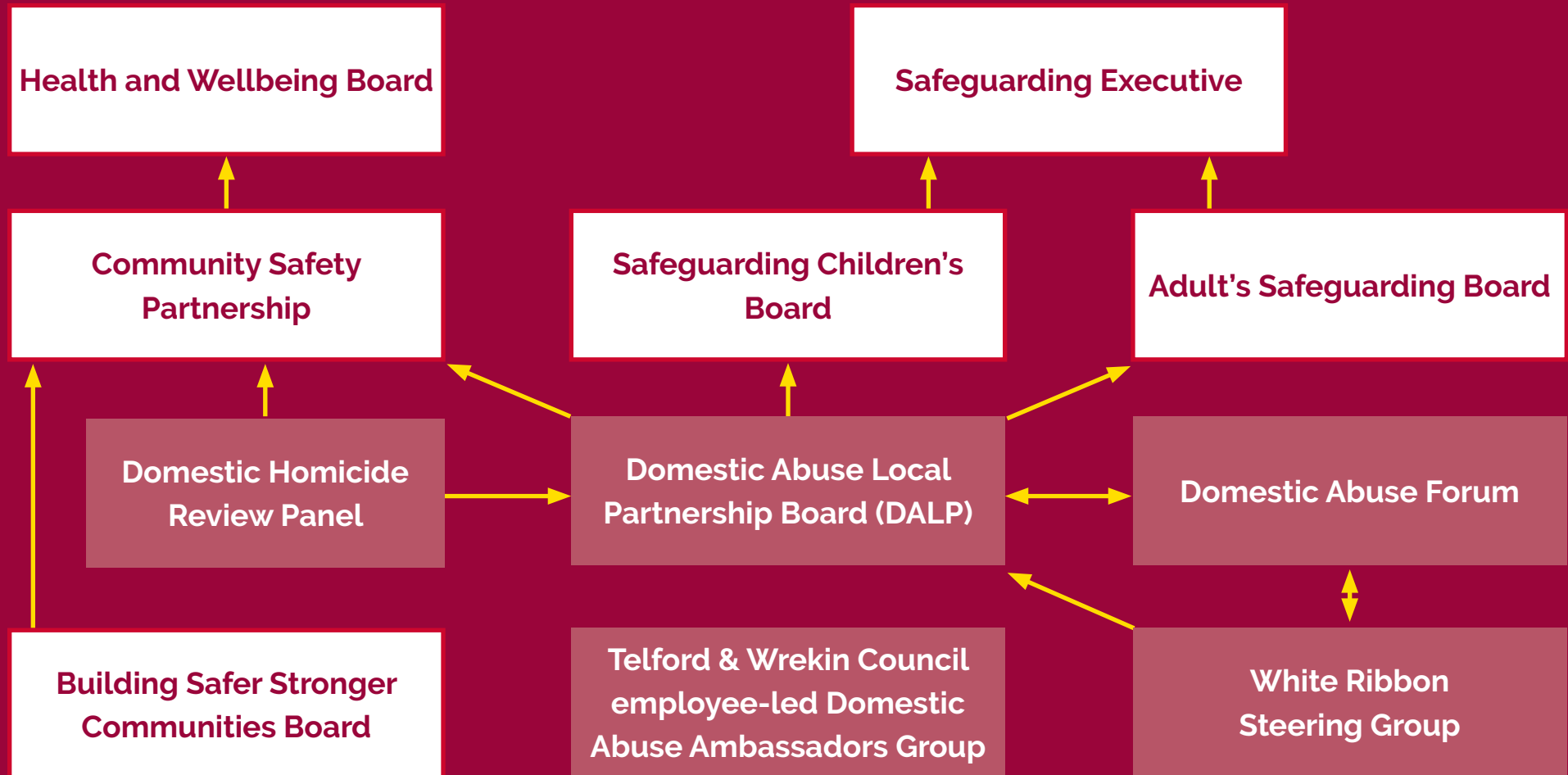
Partnership engagement and delivery

Organisations represented on the Domestic Abuse Partnership Board reviewed progress in delivering the commitments of the 2023-2025 Strategy and formulating priority commitments for the 2026-2028 Strategy during October and November 2025. The Domestic Abuse Forum were consulted on the draft commitments for the new strategy in November 2025 which resulted in some changes in scope and wording. The 16 commitments for the new strategy were approved by the DALP in January 2026.

A detailed annual action plan will be developed to deliver the strategy commitments. Progress will be reported to the DALP quarterly and formally reviewed at the end of each year. Progress against the annual action plans will also be monitored by the Domestic Abuse Forum.



Telford and Wrekin Governance



Telford & Wrekin Domestic Abuse Forum



Midlands Partnership University
NHS Foundation Trust



Shropshire, Telford
and Wrekin

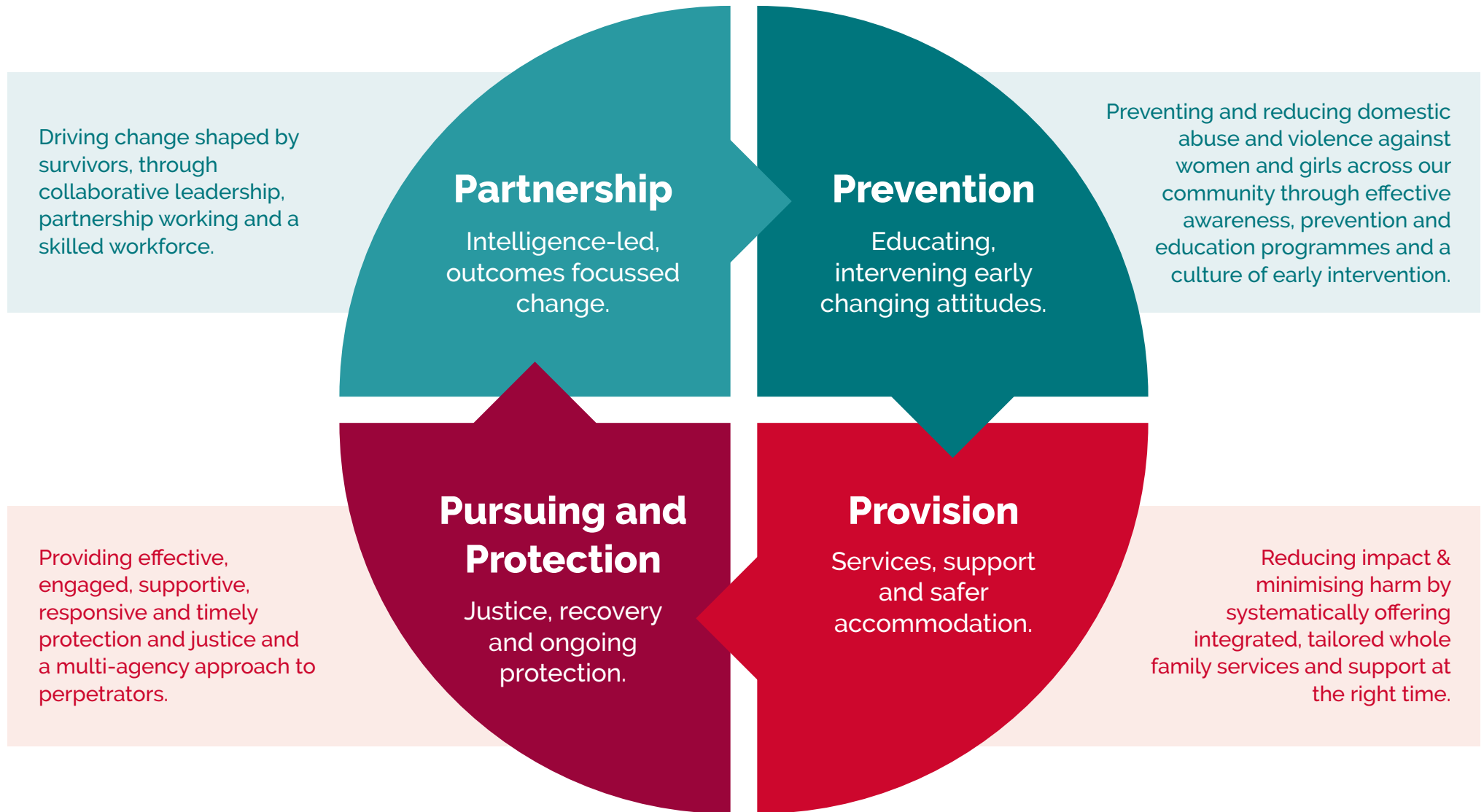


The Shrewsbury and
Telford Hospital
NHS Trust



The Robert Jones and Agnes Hunt
Orthopaedic Hospital
NHS Foundation Trust





Working together to end domestic abuse and violence against women and girls in our communities in all its forms, ensuring that everyone who is affected can access the help and services they need.

PARTNERSHIP Intelligence-led, outcomes focussed change.

Driving change shaped by survivors, through collaborative leadership, partnership working and a skilled workforce.

Key achievements 2023-2025

- ✓ Lived Experience Advisory Forum (LEAF) established in 2024 and continues to grow.
 - ✓ The Domestic Abuse Local Partnership (DALP) Board and Forum are well established with champions in partnership organisations.
 - ✓ DA Dashboard developed and presented to each DALP meeting.
 - ✓ Safe accommodation needs assessment completed in 2025.
 - ✓ 35 domestic abuse awareness sessions delivered to 454 attendees, including GPs, NHS safeguarding leads, West Mercia Police, Early Help staff and local small businesses.
 - ✓ 120 local Domestic Abuse Ambassadors with ongoing support through the quarterly local Domestic Abuse Ambassador's' Network meetings.
 - ✓ Stakeholder event held in March 2025 to highlight local effective interventions to prevent and reduce violence against women and girls.
- “*The GP training covered the changes following the Domestic Abuse Act, resources, and abuse affecting certain groups, really well. I will take these to inform wider training of those working in GP Practices and disseminate some of the videos/resources in the ICS Primary Care Safeguarding newsletter.*”

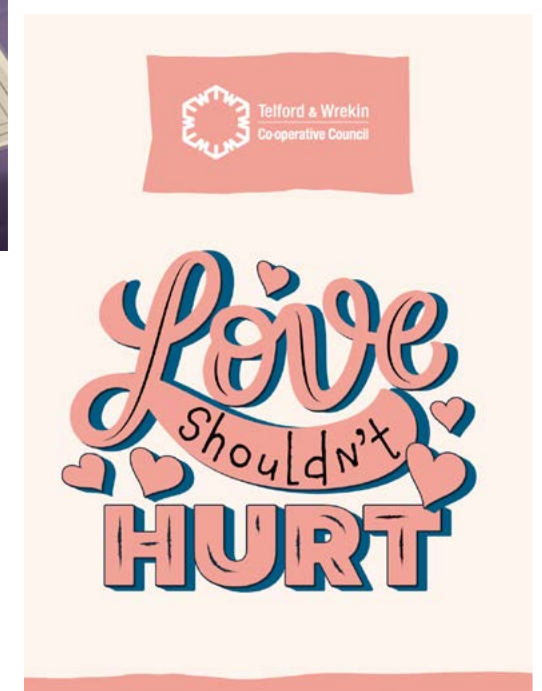
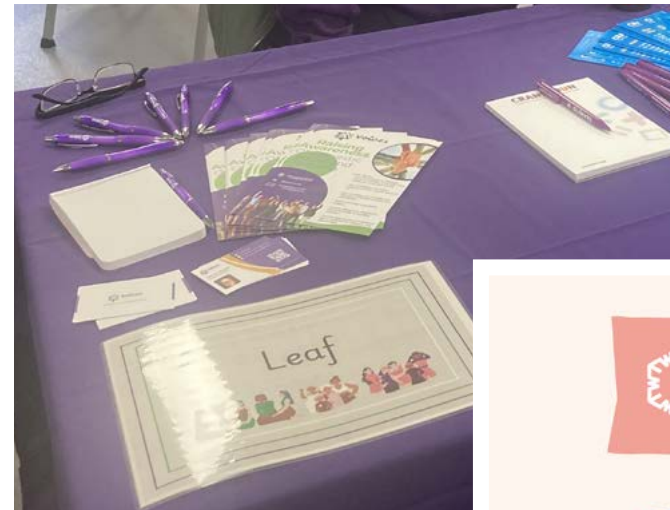


PARTNERSHIP Intelligence-led, outcomes focussed change.

Driving change shaped by survivors, through collaborative leadership, partnership working and a skilled workforce.

Partnership commitments 2026-2028

- 1** Strengthen partnership working at all levels through the Domestic Abuse Local Partnership Board and Domestic Abuse Forum.
- 2** Support the Lived Experience Advisory Forum (LEAF) to give local survivors a voice, with a particular focus on seldom heard and more marginalised groups.
- 3** Agree a framework for data collection from all safe accommodation providers, including information on protected characteristics, and incorporate into DALP dashboard.
- 4** Refresh the safe accommodation needs assessment annually and update every three years.



PREVENTION Educating, intervening early changing attitudes.

Preventing and reducing domestic abuse and violence against women and girls across our community through effective awareness, prevention and education programmes and a culture of early intervention.

Key achievements 2023-2025

- ✓ 95% of maternity staff trained to screen for domestic abuse and respond to disclosures confidently.
- ✓ Taxi marshal service operating in Southwater at weekends and in Newport for midweek student nights to improve safety in the night time economy.
- ✓ 31 licensed premises signed up to Licensing Security and Vulnerability Initiative to improve safety in the night time economy.
- ✓ Additional CCTV cameras installed to improve safety (now over 700 across Telford and Wrekin).
- ✓ Women and Girls Safety Surveys resulted in the installation of an additional 170 streetlights, improved lighting at bust stops and vegetation removal, to improve safety.
- ✓ Coordinated partnership community-based campaign and communications campaign for 2025 White

Ribbon 16 days of action, resulting in 2,998 face to face contacts with community members.

- ✓ 52 primary school sessions (reaching 2,886 children) and 58 secondary school sessions (reaching 9,943 young people) delivered to educate children and young people about staying safe, healthy relationships, consent, misogyny, gendered pressures and how to be an effective bystander.

“ The workshops helped young people feel that they are not alone in these situations and show where and how they can find help. ”



PREVENTION Educating, intervening early changing attitudes.

Preventing and reducing domestic abuse and violence against women and girls across our community through effective awareness, prevention and education programmes and a culture of early intervention.

Prevention commitments 2026-2028

- 1** Educate young people about sexual exploitation, sexual violence and unhealthy relationships, challenging attitudes that enable abuse.
- 2** Expand the reach of the annual White Ribbon campaign across our communities and into schools.
- 3** Improve the safety of women and girls in the Night-time Economy.
- 4** Provide screening and other interventions to prevent and respond to violence affecting woman throughout pregnancy and after childbirth.



PROVISION Services, support and safer accommodation.

Reducing impact & minimising harm by systematically offering integrated, tailored whole family services and support at the right time.

Key achievements 2023-2025

- ✓ New local Integrated Domestic Abuse Service commissioned from June 2023.
- ✓ A new large eight room women's refuge provided by Telford & Wrekin Council, with dedicated domestic abuse support.
- ✓ 145 contacts per month by telephone or online to the Telford & Wrekin Domestic Abuse Service Single Point of Contact.
- ✓ New Family Hub model launched including Domestic Abuse Practitioners to provide enhanced family support, alongside the Integrated Domestic Abuse Service.
- ✓ The Target Hardening Project has enabled 22 families, including 31 children, to remain safely in their own homes through modifications to improve safety and security.
- ✓ An increase from 47 to 69 units of dispersed move-on safe accommodation for survivors and their families.
- ✓ 33 referrals per month to the Telford & Wrekin Domestic Abuse Service.

“*You've helped me rebuild my confidence and make choices that put me and the kids first. Having someone who actually understood and believed me made such a difference.*”



PROVISION Services, support and safer accommodation.

Reducing impact & minimising harm by systematically offering integrated, tailored whole family services and support at the right time.

Provision commitments 2026-2028

- 1** Promote details of local support services, particularly the telephone helpline number
- 2** Strengthen pathways between the domestic abuse service for adults, children and young people, and other support services
- 3** Further increase the availability of safe accommodation to meet individual needs, with a particular focus on one and two bed units
- 4** Target harden survivor's homes so that they can continue living there safely



PURSuing AND PROTECTION Justice, recovery and ongoing protection.

Providing effective, engaged, supportive, responsive and timely protection and justice and a multi-agency approach to perpetrators.

Key achievements 2023-2025

- ✓ Independent review of MARAC completed, and action plan developed to implement recommendations.
 - ✓ Telford & Wrekin Domestic Abuse Perpetrator Panel established, linked to MARAC.
 - ✓ West Mercia Police established a Telford Prevention Hub which includes two VAWG Officers.
 - ✓ 212 survivors supported through court proceedings, and 119 survivors supported through civil remedies, by Telford & Wrekin Domestic Abuse Service.
 - ✓ Number of Domestic Violence Disclosure Scheme (Clare's Law) requests increased by 69% from 2024 to 2025.
 - ✓ Number of Domestic Violence Disclosure Scheme (Clare's Law) disclosures increased by 78% from 2024 to 2025.
 - ✓ 238 standard to medium risk perpetrators, and 102 high risk perpetrators, referred to local Perpetrator Behaviour Change Programmes.
- “ You have guided me through particularly difficult moments, such as when unexpected questions arose in the courtroom or when emotions ran high during hearings. ”

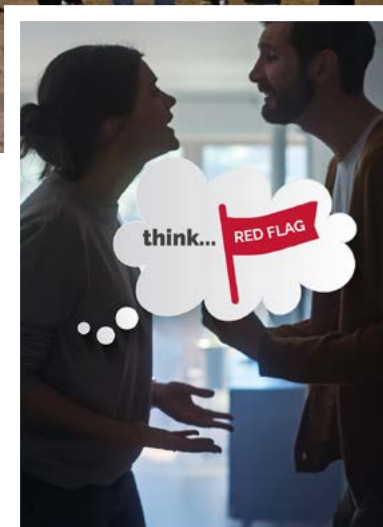


PURSuing AND PROTECTION Justice, recovery and ongoing protection.

Providing effective, engaged, supportive, responsive and timely protection and justice and a multi-agency approach to perpetrators.

Pursuing and Protection commitments 2026-2028

- 1** Continue to support local victims through court proceedings and civil remedies.
- 2** Challenge perpetrators to recognise and modify their behaviours through evidence-based perpetrator programmes and interventions.
- 3** Implement all recommendations from the independent MARAC review.
- 4** Seek and enforce appropriate legal orders and other restrictive measures to disrupt and prevent abusive behaviour.



Domestic Abuse and Violence Against Women and Girls Strategy 2026-2028

Strategy commitments

- 1 Strengthen partnership working at all levels through the Domestic Abuse Local Partnership Board and Domestic Abuse Forum.
- 2 Support the Lived Experience Advisory Forum (LEAF) to give local survivors a voice, with a particular focus on seldom heard and more marginalised groups.
- 3 Agree a framework for data collection from all safe accommodation providers, including information on protected characteristics, and incorporate into DALP dashboard.
- 4 Refresh the safe accommodation needs assessment annually and update every three years.

- 1 Educate young people about sexual exploitation, sexual violence and unhealthy relationships, challenging attitudes that enable abuse.
- 2 Expand the reach of the annual White Ribbon campaign across our communities and into schools.
- 3 Improve the safety of women and girls in the Night-Time Economy.
- 4 Provide screening and other interventions to prevent and respond to violence affecting woman throughout pregnancy and after childbirth.

- 1 Continue to support local victims through court proceedings and civil remedies.
- 2 Challenge perpetrators to recognise and modify their behaviours through evidence-based perpetrator programmes and interventions.
- 3 Implement all recommendations from the independent MARAC review.
- 4 Seek and enforce appropriate legal orders and other restrictive measures to disrupt and prevent abusive behaviour.

- 1 Promote details of local support services, particularly the telephone helpline number.
- 2 Strengthen pathways between the domestic abuse service for adults, children and young people, and other support services.
- 3 Further increase the availability of safe accommodation to meet individual needs, with a particular focus on one and two bed units.
- 4 Target harden survivor's homes, which strengthens security and surveillance, so that they can continue living there safely.

