

Annual Monitoring Report 2014



1 Introduction

1.0.1 The Annual Monitoring Report shows the performance of planning policy within the Borough over the last year and if necessary recommends changes. The data used for the report comes from the financial year of 1st April 2013 - 31st March 2014 unless otherwise noted.

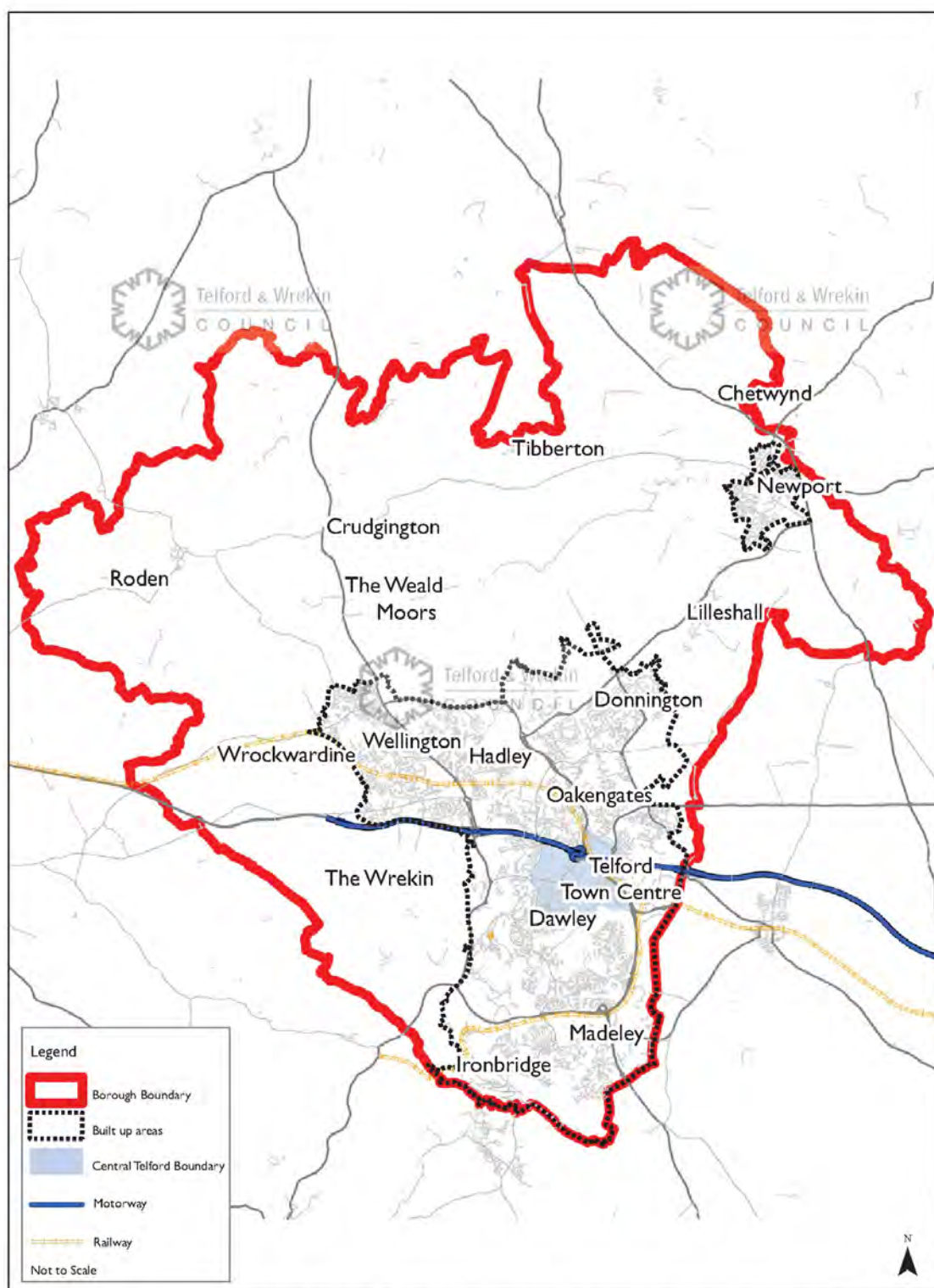
1.0.2 Where possible, this report sets out the data as the urban areas of Telford, Newport and rural area, as defined on Map 1.1.

1.0.3 The Telford and Wrekin Core Strategy covers the period up to 2016. For the period beyond 2016, the Shaping Places Local Plan will include the planning policies to deliver a spatial development strategy based on a long-term spatial vision for the Borough up to 2031. The Shaping Places Local Plan will contain planning policies which will manage where homes, businesses, shops and green spaces will be located within the borough.

1.0.4 For further information on Shaping Places and planning policy for Telford & Wrekin, please see the website via the following link - www.telford.gov.uk/shapingplaces.

1 Introduction

Map 1.1 Map of the Borough



Reproduced from the Ordnance Survey mapping with the permission of the Controller of Her Majesty's Stationery Office © Crown copyright. Unauthorised reproduction infringes Crown copyright and may lead to prosecution or civil proceedings Borough of Telford & Wrekin Licence No 100019694. Date: 2013
Drawn by Richard Overby Location r:\d\AMR\AMR2012\TownBoundary.mxd

2	Housing	4
2.1	Completions	4
2.2	Strategic Site Update	5
3	Economic Development	7
3.1	Employment	7
3.2	Employment Land	8
3.3	Retail and Town Centres	9
4	Travel and Accessibility	12
5	Water and Flood Risk	14
6	Biodiversity	15
7	Green Network	19
8	Waste and Minerals	21
8.1	Waste	21
8.2	Minerals	21
9	Heritage	23
10	Renewable Energy and Climate Change	24
11	Development Plan Documents	25
12	Local Development Scheme	26
13	Duty to cooperate	27
14	Core Strategy	28
15	Infrastructure Delivery Planning and Community Infrastructure Levy	30
16	Central Telford Area Action Plan	31
17	Neighbourhood Planning	32
18	Appendix	33

2 Housing

2.0.1 Within this section you will find information related to housing development, with 2013/14 completions and commitments.

2.1 Completions

2.1.1 Housing Completions below shows the rate of completions over the period since 2006/7. In the second half of the period there has been a rapid rise in the number of dwellings delivered.

Table 2.1 Housing Completions

	2006/7	2007/8	2008/9	2009/10	2010/11	2011/12	2012/13	2013/14	Total
Telford	365	246	407	468	511	622	591	795	4005
Newport	50	61	36	3	20	82	13	39	304
Rural Area	37	56	19	12	20	16	3	8	171
Total	452	363	462	483	551	720	607	842	4480

2.1.2 Within 2013/14 there has been a net addition of 842 dwellings, this equates 918 gross new dwellings.

2.1.3 Table 2.2 shows that as of April 2014 793 dwellings were under construction with a large number of these being within Telford. There were also over 9000 dwellings not started with planning permission. Steps continue to be taken to enable the delivery of these developments. With a large amount of dwellings under construction it is anticipated that 2014/15 will have a higher level of completions.

Table 2.2 Dwellings with permission (not yet completed)

	Under construction	Not started
Telford	702	8606
Newport	64	378
Rural	27	207
Borough total	793	9191

2.1.4 Table 2.3 shows the amount of affordable homes provided within the borough has continued to increase since the adoption of the Core Strategy. The amount of affordable housing delivered within 2013/14 is 38% and the figure is over 30% for the plan period. These figures exclude tenure switches for example mortgage rescue.

Table 2.3 Affordable Homes Provided

	Social Rent Homes Provided	Intermediate Homes Provided	Total Affordable Homes Provided
2006/7	12	9	21
2007/8	73	0	73
2008/9	139	0	139
2009/10	170	14	184
2010/11	137	65	202
2011/12	195	80	275
2012/13	180	103	211
2013/14	265	54	319

2.1.5 Since the adoption of the 2006/7, well over two thirds of dwellings have been constructed on previously developed sites.

Table 2.4 Residential Completions by Previously Developed Land (PDL) type

		2006/7	2007/8	2008/9	2009/10	2010/11	2011/12	2012/13	2013/14	2006-2013
Green Field	No.	51	65	22	50	81	184	269	555	1277
	(%)	13	20	5	10	15	27	44	66	30
Previously Developed	No.	327	255	410	433	470	500	338	287	3020
	(%)	87	80	95	90	85	73	56	34	70

2.2 Strategic Site Update

2.2.1 Lawley Village is Telford's largest development and now has completed residential development totalling over 850 new homes. Lawley Square, the commercial heart of the village, consisting of a supermarket, shops, offices, pub and apartments is now complete. Two phases of residential are currently underway - Phase 3 off West Centre Way delivering

2.2.2 434 units and Phase 6 off Dawley Road delivering 388 new homes by the consortium of the Country's top three house-builders. An Extra-Care scheme of 60 apartments has also been completed adjacent the village centre.

2.2.3 The development at Lightmoor Village continues with two sites currently under construction. Keepmoat Homes are building 105 homes on land known as the Croppings whilst Crest Nicholson are building their last phase of 66 units at Lightmoor Green.

2 Housing

2.2.4 At Telford Millennium Community in Ketley, Taylor Wimpey have completed their second phase of 83 homes and secured planning permission for a final phase of 375 units which has begun construction. An Extra-Care scheme of 86 apartments is also being built by Sanctuary Housing.

3 Economic Development

3.0.1 The information and data set out in this section has been obtained from planning application monitoring and from ONS through their NOMIS website. ⁽¹⁾

3.1 Employment

3.1.1 Within the time period of April 2013 - March 2014 unemployment within Telford & Wrekin rose from 22,200 to 22,600. However this is below the regional and national levels. Of those that are economically active, the figure fell from 8.1% to 7.7%. Outside of the monitoring period the unemployed in the economically active range has continued to fall and is now at its lowest level since march 2009.

Table 3.1 Employment levels by type

	Numbers in Employment (March 2014)	Difference from March 2012
1 Managers, directors and senior officials	8,000	+400
2 Professional occupations	12,400	-700
3 Associate professional & technical	9,400	+1,000
4 Administrative & secretarial	7,000	+800
5 Skilled trades occupations	8,000	+500
6 Caring, leisure and other service occupations	6,500	-800
7 Sales and customer service occupations	7,400	+1,500
8 Process plant & machine operatives	7,700	+700
9 Elementary occupations	11,300	+2,600
Totals:	78,000	+4,700

3.1.2 There has been an increase in the number of people employed within the borough. The largest grouping is still within professional occupations, however there has been a decrease in that sector. There have been large increases in the number of people working within elementary occupations.

3.1.3 Elementary occupations cover those which require the knowledge and experience necessary to perform mostly routine tasks, often involving the use of simple hand-held tools and, in some cases, requiring a degree of physical effort.

1 <http://www.nomisweb.co.uk/>

3 Economic Development

3.2 Employment Land

3.2.1 Telford & Wrekin continues to have a substantial supply and a wide variety of employment land and premises available for businesses and developers as indicated by Table 3.2. This includes former New Town development land that remains available within established employment parks and industrial estates including Donnington Wood, Hadley Park, Halesfield, Hortonwood, and Stafford Park. Many of these larger sites are suitable for larger format industrial and warehousing units (B2 and B8 uses).

3.2.2 There are also opportunities for smaller scale employment developments on vacant sites or through the conversion or extension of existing buildings within or close to town centres in the borough. The most notable of these opportunities is at Telford town centre, where the Southwater development will deliver office developments (B1a uses) as part of the mixed use scheme.

3.2.3 The figures in the following table are a summary of the amount of land available (in hectares) for new build employment development at April 2014. More detailed figures are set as set out in Appendix 6a.

Table 3.2 Employment land available by use class (hectares)

	B1(a) (Offices)	B1(b) (Research & Development)	B1(c) (Light Industry)	B2 (General Industry)	B8 (Warehousing & Distribution)	Totals:
Telford	95.5	0.1	2.3	53.9	71.7	223.5
Newport	0	0	0	3.05	0	3.05
Rural Area	0.4	0.8	0.1	3.1	25	29.4
Borough Total	95.9	0.9	2.4	57	96.7	252.9

3.2.4 This shows that Telford continues to contain the majority of the available employment land in the borough. There is a limited amount of new build employment land is available within Newport and the Rural Area with the majority of the land available being through extensions, change of use or replacement developments.

3.2.5 The following table summarises the changes in employment floorspace in the borough between 1st April 2013 and 31st March 2014. All figures presented are net square metres (i.e. floorspace losses are deducted from floorspace gains).

Table 3.3 Employment floorspace completions (hectares)

	B1(a) (Offices)	B1(b) (Research & Development)	B1(c) (Light Industry)	B2 (General Industry)	B8 (Warehousing & Distribution)	Totals:
Telford	1312	-	2448	11787	-282	15265
Newport	-504	-	-442	-	-	-946
Rural Area	-	-	-255	855	600	1200
Borough Total	808	-	1751	12642	318	15519

3.2.6 Overall there has been a net gain of 15519 square metres of employment floorspace within the borough. The majority of this is within Telford with 8470 square metres due to the construction of a meat processing plant at Hortonwood.

3.3 Retail and Town Centres

3.3.1 This section examines the changes that have taken place in floorspace and development land for retail and other town centre uses. 'Town centre uses' are defined in the National Planning Policy Framework as;

- retail;
- leisure;
- entertainment facilities;
- more intensive sport and recreation uses;
- offices, and;
- arts, culture and tourism development.

3.3.2 For the purposes of monitoring, these are taken to mean developments that fall within the A1, A2, A3, A4, A5, B1(a) and D2 categories of the Use Classes Order⁽²⁾. The table below sets out the changes to floorspace (net square metres) within these town centre use classes that have occurred in the monitoring year 1st April 2013 to 31st March 2014.

2 The Town and Country Planning (Use Classes) Order 1987 (as amended)

3 Economic Development

Table 3.4 Changes to floorspace (net square metres) within Town Centre use classes

	A1 (Retail)	A2 (Financial & Professional)	A3 (Restaurants & Cafes)	A4 (Drinking Establishments)	A5 (Hot Food Takeaways)	B1(a) (Offices)	D2 (Assembly & Leisure)
Telford	6925	147.5	563	-463	1289	1312	5242
Newport	-146	-	-	-	50	-225	-
Rural Area	-	-	200	-	-25	-	-
Borough Total	6779	147.5	763	-463	1314	1087	5242

3.3.3 Overall, there has been a gain in floorspace for all town centre uses (except A4) between April 2013 and March 2014. The biggest loss of A4 is to residential developments.

3.3.4 The following table breaks down the completed town centre uses by the different centres in the borough.

Table 3.5 Town Centre uses completed by Centre

	A1 (Retail)	A2 (Financial & Professional)	A3 (Restaurants & Cafes)	A4 (Drinking Establishments)	A5 (Hot Food Takeaways)	B1(a) (Offices)	D2 (Assembly & Leisure)	Total Floorspace change in Town Centre Uses
Dawley	-187	-24	-	-250	-	250	-	-211
Donnington	-	-	-	-	-	-	-	-
Hadley	511	-	140	-	140	-	-	791
Madeley	-	-	-	-	-	-	-	-
Newport	-156	-	-	-	50	-225	-	-331
Oakengates	-	-41	41	-	-	-	-	0
Telford	700	-	222	-	-	-385	225	762
Wellington	-220	-	-	-	-	-100	220	-100
Local Centres	-678	213	301	-	213	163	802	1013
Total within centres	-30	148	704	-250	403	-297	1247	1922

3.3.5 With regards to district centres in the borough, Hadley, Donnington, Madeley and Oakengates have experienced an overall gain in their town centre floorspace. Dawley however has experienced an overall reduction due to the conversion of commercial and office units to residential use.

3.3.6 Outside of the district centres the largest reduction has been in Newport, these reductions have resulted from changes of use of office and retail to provide residential accommodation.

3.3.7 Telford town centre has experienced overall gains in town centre floorspace. This is the result of a cafe, leisure and office use being permitted in the Town Centre as well as retail mezzanines and an extension to a restaurant at the Telford Bridge Retail Park.

3.3.8 Local centres have experienced a reduction in retail however gains in other uses outweigh this change. This is the result of a mixed use building being completed at Lawley Square and a new restaurant at Lightmoor. These centres have been subject to on going regeneration and redevelopment in recent years. Recent development comprises of retail, financial, restaurant, cafes and takeaway type uses. Planning permission has been granted for a health and fitness centre in Lawley Centre.

3.3.9 Overall, the patterns of development that have taken place in the borough's centres over the past year are reflective of those being experienced throughout the UK. Generally, there have been losses in office and retail floorspace but gains in food & drink, leisure and residential uses. As with the national picture, it appears that it is the smaller centres that have been most affected by these changes.

Southwater

3.3.10 Regeneration and development work in the Town Centre is on going however recent development offers an abundance of things to do in the heart of Telford Town Centre. The centre comprises of a new library, an IMAX Cinema, a refurbished Ice Rink with an improved link between Telford Shopping Centre and Telford Town Park. The Town Park now comprises of a pocket park including a boules pit, chess tables and new gateway leading into the Town Park, Arena and new Visitor Centre. Since the area has been developed there have been a number of successful events in the Town Park, Arena and Southwater.

Picture 3.1 Southwater



4 Travel and Accessibility

4 Travel and Accessibility

4.0.1 The third Local Transport Plan (LTP3) for Telford & Wrekin was approved in early 2011 and sets out how the Council plan to manage, maintain and develop the Borough's network over the period 2011 to 2026.

4.0.2 The six Local Transport Plan goals which will help achieve the overall vision in 2026 are:

1. Making travel more reliable and efficient, to attract jobs and support growth and regeneration.
2. Maintain highways effectively and efficiently
3. Reduce carbon emissions to help tackle climate change
4. Allow everyone to access jobs, education, healthcare, shops and leisure
5. Improve safety and security on the transport network and promote active travel choices which encourage people to be healthier
6. Improve the quality of life by reducing the visual, noise, air quality and other impacts of transport on people and the local environment.

4.0.3 The LTP3 comprises an overarching core strategy which provides the guiding principles for the management and improvement of the transport network, and a series of individual strategies that will be developed in order to tackle specific topics. Examples of individual strategies include the Rights of Way Improvement Plan, Asset Management Plan and Road Safety Strategy.

4.0.4 The Local Sustainable Transport Fund (LSTF) is a new programme launched by government in January 2011. It was established in support of the Local Transport White Paper 'Creating Growth, Cutting Carbon: Making Sustainable Local Transport Happen'. It will provide £560 million over the next 4 years for local highway authorities to deliver sustainable transport improvements in their areas which will meet the primary objectives of supporting economic growth and achieving carbon reduction.

Picture 4.1 Wellington Bus Station



4.0.5 Travel Telford represents an investment programme in sustainable, low carbon, low cost transport for Telford & Wrekin. The Council were successful in securing £3.5million of DfT 'Local Sustainable Transport' funding direct from Central Government. The aim of Travel Telford has been to help to reduce the impact of pollution and carbon emissions on the local environment as well as help support and stimulate economic growth across the whole Borough. Schemes included within the programme are focused on three target areas including:

- Tourism
- Business
- Schools

4.0.6 The following is a brief description of the key schemes:

- Ironbridge Park and Ride/Gorge Connect - A new Park and Ride site with access into the heart of Ironbridge.
- Improvements to cycle routes – including enhancement of the Silkin Way and the creation of a new 'cycle friendly' route between Telford/Newport/Stafford as well as targeted investments to the core cycle network.
- Telford Central Railway Station to Telford Town Centre - An improved pedestrian/cyclist route from the railway station giving improved access to major destinations including Telford Shopping Centre and Telford International Conference and Exhibition Centre.

4.0.7 The Council have also been successful in securing a large (£8.4million) LSTF funding bid for improvements to Telford Town Centre Box Road. The scheme will help enhance the town centre by creating a more pedestrian and cyclist friendly environment, helping to reduce traffic flow around the town centre and open up further development opportunities. The 'Box Road' scheme will see the replacement of a three lane one way highway with two way urban boulevards around three sections of the box as well as the creation of a 'shared space' street on Coach Central, helping to better link the shopping centre to the Southwater Development. Works are due to be complete by end of March 2015.

4.0.8 The Council have been successful in securing funding for further highway network improvements as part of the Marches Local Enterprise Partnership growth deal. This funding will be targeted on key junction improvements on the highway network between 2015 - 2017.

5 Water and Flood Risk

5.0.1 National guidance set out in the National Planning Policy Framework states inappropriate development in flood risk areas should be avoided by directing development away from areas of highest risk, but where development is required making it secure without increasing flood risk elsewhere. The Environment Agency provide advice on applications to which they object to over flood risk or water quality via their website.

5.0.2 In respect of Telford & Wrekin, no planning permissions were granted which were contrary to Environment Agency advice on flooding or water quality.

5.0.3 As part of the evidence base for the Shaping Places Local Plan we will complete a Water Cycle Study (WCS). The study will be completed alongside the plan in order to provide evidence on water and wastewater infrastructure, and the wider water environment.

6 Biodiversity

6.0.1 There are 8 Sites of Special Scientific Interest in Telford & Wrekin and Natural England carries out regular Condition Monitoring on these sites to assess the percentage of SSSI's in Favourable Condition.

Table 6.1 Results of Natural England 2013 Condition Monitoring of SSSI's in Telford & Wrekin

SSSI Name	Reason for designation	% Area Meeting PSA target	% Area favourable	%Area unfavourable recovery	% Area unfavourable no change	% Area unfavourable decline	% Area destroyed/ part destroyed
Allscott settling Ponds	Series of lagoons supporting bird population of County importance	61.59	61.59		38.41		
Lincoln Hill	Geological SSSI with varied rock exposures	100		100			
Lydebrook Dingle	Narrow steep sided dingle with ancient and relatively undisturbed woodland.	100		100			
Muxton Marsh	Good example of unimproved grassland, fen and carr remaining as a result of coal mining.	100		100			
New Hadley Brick Pit	Geological SSSI of outstanding importance for interpreting the geological history of the late Carboniferous in Britain.	100		100			
Newport Canal	Disused canal with assemblage of aquatic plants of value in Shropshire.				100		
The Wrekin & The Ercall	Prominent ridge of geological and biological importance. Valuable woodland supporting bird assemblage.	100	100				
Tick Wood and Benthall Edge Wood	An area of ancient native mixed deciduous woodland overlooking the Severn Gorge. Several uncommon plant species have been recorded,	100	10.36	89.64			

6 Biodiversity

SSSI Name	Reason for designation	% Area Meeting PSA target	% Area favourable	%Area unfavourable recovery	% Area unfavourable no change	% Area unfavourable decline	% Area destroyed/ part destroyed
	including fingered sedge which is only known in the Shropshire locality.						

6.0.2 The majority of the SSSI's in Telford & Wrekin are in favourable condition or in unfavourable recovering condition which is considered, by Natural England, to indicate that appropriate action is being undertaken to move towards favourable condition. Newport Canal remains in unfavourable and declining condition.

6.0.3 Local Nature Reserves (LNR) are designated by the Local Planning Authority in partnership with Natural England, Town and Parish Councils and interested community groups. Telford & Wrekin currently has 6 designated Local Nature Reserves, as listed below, and is in the process of designating additional areas and extending others.

6.0.4 Designated Local Nature Reserves in Telford & Wrekin:

- Granville Country Park
- Limekiln Wood
- Lodge Field
- Madebrook Pools & Stirchley Dingle
- Telford Town Park
- The Ercall & Lawrence's Hill

Table 6.2 Proposed Local Nature Reserves in Telford & Wrekin

Site Name	Stage in designation process	Timescale for designation
Apley Castle pLNR	A draft management plan is being prepared for the site and LNR boundary has been confirmed.	Autumn 2015
The Cockshutt pLNR	A draft management plan is being prepared along with a draft boundary for consultation	Summer 2015
Dothill Park and Beanhill Valley pLNR	The report was approved on 27th march 2014 and the boundaries need to be confirmed.	Summer 2014
Ironbridge Meadows & Pastures pLNR	A draft management is being prepared for this site.	2015
Lightmoor pLNR	This site has a management plan and a draft boundary is being prepared for consultation	2016
Madeley Pitmounds pLNR	The management plan has been agreed and the internal consultation has occurred. The proposal will be presented to cabinet in February 2014.	Summer 2014
Randlay Valley pLNR	A draft management plan has been prepared for this site	2016
Wide Waters & Castle Pools pLNR	Very early stages of engagement	2016
Rough Park pLNR	Very early stages of engagement	2016

6.0.5 There are two types of Locally Designated Sites in Telford & Wrekin:

6.0.6 Local Wildlife Sites (sometimes known as County Wildlife Sites) are adopted by Shropshire Wildlife Trust in partnership with a range of organisations including Local Authorities and Natural England based on areas of land, either in private or public ownership, which represent examples of high quality habitats or which support a range of important species.

6.0.7 Local Geological Sites (formerly known as Regionally Important Geological or Geomorphological sites RIGS) are adopted by Shropshire Geological Society in partnership with a range of organisations including Local Authorities and Natural England and represent high quality examples of geological exposures and other formations.

6.0.8 There are 44 Local Wildlife Sites and 26 Local Geological Sites in Telford & Wrekin. The adoption of new sites is managed through the Local Sites Partnership of which Telford & Wrekin Council is a member.

6.0.9 Local Authorities are required by Defra to report the proportion of Locally Designated Sites in their area which are in 'positive management' under Single Indicator 160-00. 'Positive management' is taken in Shropshire to mean: that more than 50% of the site is in an appropriate woodland grant scheme or higher level stewardship scheme, that the site has a formal

6 Biodiversity

management plan, that the site has been recently visited and seen to be in good condition or that Shropshire Wildlife Trust (or Shropshire Geological Society) has visited the site and provided the owner with formal advice which is being acted upon.

Table 6.3 Proportion of Locally Designated Sites in ‘positive management’ in Telford & Wrekin

Type of Locally Designated Site	Number of sites in Telford & Wrekin	Number of sites in ‘positive management’	Total Percentage of Local Sites in ‘positive management’
Local Wildlife Sites	44	29	66 %
Local Geological Sites	26	14	

6.0.10 The percentage of Locally Designated Sites in ‘positive management’ is measured annually and reported to Defra. 66% of Locally Designated Sites in Telford & Wrekin are in ‘positive management’. This is significantly above surrounding Counties, Shropshire Council for example reports only 37% of sites in ‘positive management’. This is because Telford & Wrekin has secured either ownership or management control over a larger proportion of its Locally Designated Sites than most other Local Authorities. Across the whole of the VC40 ⁽³⁾ area, which includes Shropshire and Telford & Wrekin, the Local Sites Partnership aims for an increase of 5% annually in the number of sites which can be assessed as in ‘positive management.’

3 VC40 refers to the Vice County. This is a geographical division of the British Isles, used for the purposes of biological recording.

7 Green Network

7.0.1 The Green Network is an urban green space designation which recognises the strategic nature and significance of green infrastructure planning within the Borough. It aims to protect, provide, enhance and expand the green infrastructure assets which contribute to the quality of life within the urban area of Telford. The table below shows planning application decisions made by the Council during 1st April 2013 and 31st March 2014 in areas within and adjacent the Green Network.

Table 7.1 Planning application adjacent or within Green Network

Type of application	Refused	Granted	Total
Full	4	152	156
Outline	0	19	19
Reserved matters	0	2	2
Advertisement	2	21	23
Listed Building	0	5	5
Conservation	0	2	2
Trees in Conservation Area	0	12	12
Tree Preservation Order	0	9	9
Section 192 Proposed Use	0	1	1
Householder (Prior Approval)	0	2	2
TOTAL	6	225	231

7.0.2 The significant pressure for development within urban areas is a matter with impact on green network. The table above shows planning decisions made by the Local Planning Authority on planning applications which were either within or adjacent the Green Network. It must be noted that most of the applications did not result in a change to the green network or reduction in its are. The majority are minor applications for conversions of existing buildings and advertisement consents. Applications also provide additional open space and improvements to the green network. Proposed housing development will generally result in an overall improvement to open space provision in the locality as it will have a wider community benefit and meet the aims of the Green Network.

7.0.3 Telford & Wrekin Council has a Green Infrastructure Framework (2012). This includes a comprehensive overview of the provision and performance of the green infrastructure present in the borough, identifying what green infrastructure currently exists; what it is (the type), where it is (the distribution) and what it is currently doing (how it functions).

7 Green Network

7.0.4 Since the Green Network was last reviewed in the preparation for the Wrekin Local Plan, the nature of some green spaces has changed. The Council is currently updating the Wrekin Local Plan Green Network and the Shaping Places Local Plan will include green infrastructure policies setting out the Councils approach to protecting green infrastructure assets.

8 Waste and Minerals

8.1 Waste

8.1.1 As can be seen from Table 8.1, showing the method of management by the waste planning authority, there has been a significant fall in the total of waste arisings between 2013 to 2014. The majority of this reduction has been in landfill with a substantial reduction in municipal waste going to landfill.

Table 8.1 Amount of municipal waste arising in Telford & Wrekin

	Year	Landfill	Incineration with EfW*	Incineration without EfW*	Recycled/composted	Other	Total waste arisings
Amount of waste arisings in tonnes	2007	56153.80	0	0	29727.07	0	85880.87
	2008	63216.15	122.83	0	30214.81	0	93553.79
	2009	56693.18	89.83	0	31560.96	0	88343.97
	2010	54390.18	61.44	0	35064.21	0	89519.99
	2011	51520.03	58.74	0	37103.94	0	88682.71
	2012	50589.32	82.31	0	35346.84	0	86018.47
	2013	46911.20	196.63	0	35002.56	0	82110.39
	2014	40802.71	0	0	35080.70	0	76110.83
* - EfW is energy from waste, for example as electricity or heating.							

8.1.2 The recycled/composted column includes the re-use figure. Since 2007 the amount of waste sent to landfill has fallen whilst the amount of waste recycled, re-used or composted has increased significantly.

8.2 Minerals

9.2 Minerals

8.2.1 Shropshire Council and the Borough of Telford & Wrekin are combined as a single sub region for the purpose of aggregates supply allocations. The Government requires that Mineral Planning Authorities should plan for a steady and adequate supply of aggregates. To support this planning the Council have produced a draft Local Aggregate Assessment to ascertain whether there is a shortage or surplus of supply. This will provide evidence that will be used to determine the level of provision of mineral aggregates to be made in the preparation of the Shaping Places Local Plan Shaping Places. The Local Aggregates Assessment should be considered alongside the Annual Monitoring Report.

Primary Aggregates

8.2.2 The NPPF requires the Council to identify a landbank of 7 years or above for sand and gravel. The current landbank for the sub region of Shropshire and Telford & Wrekin is entirely met by sites within Shropshire since there are no currently permitted reserves within the Borough. The landbank of permissions for sand and gravel working has remained consistently above the minimum target level of 7 years. The permitted landbank of permissions was equivalent to about 18.9 years production in 2013 (AWP data 2001 - 2012; SC data 2013). The latest available data indicates that the 10 year average for sand gravel production in Shropshire and Telford & Wrekin is 0.72mt and the 3 year average is 0.65mt, both of which are below the current production guideline of 0.82mt. (AWP data 2001 - 2012; SC data 2013).

8.2.3 9.2.6 During 2012/13, there were no additional reserves of sand and gravel granted planning permission.

8.2.4 The NPPF requires the Council to identify a landbank of at least 10 years for crushed rock. The landbank of permissions for crushed rock working has remained consistently above the minimum target level of 10 years. The existing landbank is equivalent to 38.6 years. Data indicates a 3year average production of 2.31mt and a 10year average production of 2.29 years in 2013 (AWP data 2001 - 2012; SC data 2013). During 2012/13, there were no additional reserves of crushed rock granted planning permission.

Secondary and recycled aggregates

8.2.5 Data on the production and use of secondary and recycled aggregates is limited and requires further consistent data collection from the industries involved. Figures for secondary and recycled materials used as aggregates are currently only collected sub-regionally and only limited information is available for Shropshire and Telford & Wrekin specifically.

8.2.6 Environment Agency data suggests that about 0.38 million tonnes of inert waste was handled at waste management facilities in the two areas in 2012. The arisings and use of both primary and secondary aggregates is currently in the process of being monitored as part of the new Local Aggregate Assessment regime, the findings of which will be reported in future annual monitoring reports.

Industrial Minerals

8.2.7 Brick Clay is worked within the borough at Hadley Quarry, this site supplies Blockleys Brickworks. In 2005 the site was granted planning permission to extend consequently increasing the permitted reserves by some 2.8million tonnes. Adequate permitted reserves of brick clay exist to maintain supplies up until year 2020.

9 Heritage

9.0.1 Telford and Wrekin benefits from a rich and diverse heritage. This heritage includes the Ironbridge Gorge World Heritage Site, urban Conservation Areas of Newport, Wellington and Horsehay, rural Conservation Areas in Edgmond, High Ercall and Wrockwardine together with numerous listed buildings, locally listed buildings, Scheduled Ancient Monuments and archaeological features. This built heritage is important not only for its historical significance but also in its contribution to community identity, education and environmental quality.

9.0.2 Currently the main indicator for heritage is the change in extent of Conservation Areas. This is shown in Table 9.1.

Table 9.1 Conservation Areas

Conservation Area	Hectares	Character Appraisal	Management Proposals
Edgmond	24.2	Yes	Yes
Newport	22.4		
Wrockwardine	26.9		
High Ercall	9.5	Yes	Yes
Wellington	8.2	Yes	Yes
Horsehay	25.1		
Severn Gorge	417.9	Yes	Yes
Borough	531.9	-	-

9.0.3 Conservation Areas also shows which of the Conservation Areas have Character Appraisals and Management Proposals. Although over 50% of the Conservation Areas (86% in terms of area) now have both in place, there has been no change within the last year. Character Appraisals for Wrockwardine and Horsehay Conservation Areas are currently being drafted and will be subject to public consultation during 2015.

10 Renewable Energy and Climate Change

10.0.1 Existing planning policy (the and Core Strategy and saved Wrekin Local Plan policies) and emerging planning policy in the emerging Shaping Places Local Plan recognise and promote sustainable planning and design through both passive (such as accessible locations, layout, building orientation and energy efficient) and active (such as the use of photovoltaic panels) measures.

10.0.2 Development which has involved the delivery and use of renewable energy forms part of this objective.

10.0.3 The following provides an indication of the borough's commitment to renewable energy.

Table 10.1 Renewable Energy Schemes

Application Number	Description
TWC/2014/0810	Solar farm
TWC/2014/0134	Solar farm - council
TWC/2014/0561	Solar panels - householder
TWC/2014/0336	Solar panels - householder
TWC/2014/0121	Solar panels - householder
TWC/2014/0514	Solar panels to front and rear - householder
TWC/2014/1156	Solar panels - industrial
TWC/2014/0112	Biomass heating system

11 Development Plan Documents

11.0.1 This section discusses the documents that have been adopted and how they are performing. It also gives commentary on the documents that are under preparation.

12 Local Development Scheme

12.0.1 The Council's Local Development Scheme (LDS) is available via the following link - http://www.telford.gov.uk/info/200074/planning/1652/local_development_scheme.

13 Duty to cooperate

13.0.1 Under Section 110 of the Localism Act 2011 local authorities have a legal duty to engage constructively, actively and on an ongoing basis to maximise the effectiveness of Local Plan preparation in the context of strategic cross boundary matters.

13.0.2 To date, meetings have taken place with neighbouring authorities in the region both from the perspective of Telford & Wrekin's own emerging planning framework, and regarding issues facing other authorities in the wider region. The Council is undertaking an on-going dialogue with its principal neighbour, Shropshire Council, as part of the consultation for the Strategy & Options Document (2013), and in conjunction with the consultation on the Proposed Housing and Employment Sites Document (2014).

13.0.3 Engagement at both policy and site allocation level will continue as part of the draft local plan stage, and will involve more detailed engagement with the Council's neighbours once the full details of the emerging plan have been defined.

14 Core Strategy

14.0.1 The Telford & Wrekin Core Strategy was adopted in 2007 and includes planning policies covering the period up to 2016.

14.0.2 The adopted Core Strategy includes a section on Implementation and Monitoring. Core Strategy Indicators Progress Summary shows the performance of the Core Strategy against the indicators. If the indicator is on track it receives 1 point, whilst those not showing any notable trend or the indicator is unmeasurable it receives a zero. Those which are not performing, receive -1. Each policy has several indicators, for each policy the total for all the indicators are given in Core Strategy Indicators Progress Summary.

14.0.3 A number of the indicators are linked to the completion of dwellings in previous years and so related policy areas will have lower scores. However the rate in house building within the borough has increased over the last few years so the scores are also expected to increase. Work has been completed at Southwater and together with redevelopment of the Shopping Centre following the approval of planning permission, this is will be reflected in future scores.

Table 14.1 Core Strategy Indicators Progress Summary

Policy	Title	Score
SDS	Spatial Development Strategy	+1
CS1	Homes	+3
CS2	Jobs	0
CS3	Telford	+1
CS4	Central Telford	+1
CS5	District and Local Centres	+2
CS6	Newport	+1
CS7	Rural Area	+1
CS8	Regeneration	+1
CS9	Accessibility and Social Inclusion	+1
CS10	Community Facilities	+1
CS11	Open Space	0
CS12	Natural Environment and	+1
CS13	Environmental Resources	
CS14	Cultural, Historic and Built Environment	0
CS15	Urban Design	0

14.0.4 The Telford and Wrekin Core Strategy covers the period up to 2016. For the period beyond 2016, the Shaping Places document will include the planning policies to deliver a spatial development strategy based on a long-term spatial vision for the Borough up to 2031.

15 Infrastructure Delivery Planning and Community Infrastructure Levy

15 Infrastructure Delivery Planning and Community Infrastructure Levy

15.0.1 A Community Infrastructure Levy (CIL) is a method that can be used to deliver the infrastructure related to the development strategy for an area. A CIL includes a charging schedule relating to the infrastructure needed and requires the local planning authority to have in place an up-to-date adopted development plan to provide a strategy and proposals against which the infrastructure schedule is worked up. The Council currently seeks developers contributions through Section 106 planning obligations.

15.0.2 The Council is keeping the feasibility of preparing a CIL under review. A CIL will only be prepared where its preparation is viable and feasible in the Telford & Wrekin area. If this can be demonstrated, it would be prepared alongside related stages of work on the Local Plan. The target date for the CIL examination would be immediately following the Local Plan Examination.

15.0.3 In conjunction with the ongoing work on the Shaping Places Local Plan, the Council is also preparing an Infrastructure Delivery Plan (IDP). This will be used as an evidence base to inform the preparation of any CIL. The Council is currently consulting with infrastructure providers to help understand their requirements, as well as how the new Local Plan, along with any allocated sites, may affect infrastructure.

16 Central Telford Area Action Plan

16.0.1 As with the Core Strategy, the Central Telford Area Action Plan includes a monitoring framework. Rather than score each policy, the document scores performance based on Vision Themes. For each theme there are several indicators. If the indicator is on track it gets 1 point or if it is negative trend it gets a -1, those not showing any notable trend or the indicator is unmeasurable, get zero. Central Telford Area Action Plan Progress shows the scores for all the indicators per vision theme.

Table 16.1 Central Telford Area Action Plan Progress

Objective	Title	Score
Vision Theme 1	A Centre with a Vibrant Heart	+6
Vision Theme 2	A Distinctive Sense of Place	+2
Vision Theme 3	A Place for Living	-1
Vision Theme 4	A Centre with a Thriving Economy	+1
Vision Theme 5	An Accessible and Connected Centre	+4
Vision Theme 6	A Centre with Low Environmental Footprint	0
Vision Theme 7	A Green Community	+3

16.0.2 As the delivery of developments around the Town Centre are now progressing, many of the indicators are positive. It is expected that this will improve further as developments and improvements are completed.

17 Neighbourhood Planning

17.0.1 Town and Parish Councils (or Neighbourhood Forums in other areas without parishes) can now prepare Neighbourhood Development Plans and Neighbourhood Development Orders. A Neighbourhood Development Plan can enable communities to establish general planning policies for development and use of land in their area. It can be detailed, or general, depending on what local people want and forms part of the Development Plan. To be put in place a plan needs to pass a number of tests; it must conform to national planning policies and the strategic policies of Telford & Wrekin Council.

17.0.2 Waters Upton Parish, Ercall Magna Parish and Newport Town Council are preparing Neighbourhood Development Plans for their respective areas as local "Frontrunner" pilots for Neighbourhood Planning. At this stage, no Neighbourhood Development Orders are proposed in Telford & Wrekin.

17.0.3 In October 2013, Stirchley & Brookside Parish Council applied to designate the Parish area of Stirchley & Brookside as a neighbourhood area outside of the Frontrunner scheme and were designated in January 2014. Waters Upton Parish Council have now submitted the Waters Upton Neighbourhood Plan that completed the Plan Proposals Publicising period in March 2015 ahead of independent examination.

17.0.4 Also, outside of this monitoring period; a referendum was held on 29th January 2015 for Madeley Town Council Neighbourhood Development Plan receiving a majority 'yes' vote. The result was 94% of valid votes in favour and 6% against. Overall turnout at the referendum was 16.57% from a 12,126 electorate. The Madeley Neighbourhood Development Plan was officially made in March 2015 and will now be used to inform planning decisions in the area.

17.0.5 In accordance with the Localism Act (2011) and Neighbourhood Planning (General) Regulations 2012 the Parishes prepare these plans, rather than Telford & Wrekin Council, although Telford & Wrekin Council offers advice and assistance.

17.0.6 Further details of progress of the Neighbourhood Development Plans under preparation in Telford & Wrekin will be provided on the Council's website www.telford.gov.uk/neighbourhoodplanning as well as where possible on the relevant Parishes own websites.

18 Appendix

18.0.1 Attached below are appendices which shows the raw data which has been collected. Please note that more recent planning applications with the TWC prefix are reverted back to W prefix. For example TWC/2013/0001 becomes W2013/0001.

Appendix 1 - Residential Plots Completed in 2013/14

Ward Name

	Application No	Address	Previous Use	Hectares	Completed
<i>Apley Castle</i>					
	W2010/0412	Watkins Nursery And Garden Centre, Apley Castle, A	FE	0.07	3
	W2010/0011	Former Watkins Nursery, Apley Castle, Leegomery, Telford, Shropshire.	FE	0.73	6
<i>Arleston</i>					
	W2007/0535	Site B, Limekiln Lane, Wellington	FE	3.70	24
	W2012/0487	Land adjacent, 55 Manor Rise, Arleston, Telford, Shropshire,	FR	0.06	1
	W2012/0553	45-51 Princess Avenue, Arleston, Telford, Shropshire, TF1 2LJ	FR	0.13	-4
	W2013/0341	The Former Vicarage, Church Walk, Wellington, Telford, Shropshire	FR	0.09	2
	W2012/0169	Land adjacent to, 6 Churchill Road, Arleston, Telford, Shropshire, TF1 2JB	GR	0.05	1
<i>Brookside</i>					
	W2013/0801	112 - 140 & Brookside Youth Club, Beaconsfield, Brookside, Telford, Shropshire, TF3 1NJ	FR	0.42	-37
	W2012/0714	Former Brindleyford School, Brindleyford, Brookside, Telford, Shropshire.	OB	1.30	52
<i>Church Aston and Lilleshall</i>					
	W2009/0288	Land to rear of, 15A, The Humbers, Donnington, Telford, Shropshire.	FR	0.21	2
	W2013/0074	Green Bank, Pitchcroft Lane, Woodcote, Newport, Shropshire, TF10 9AU	FR	0.22	-1
	W2013/0492	Land adjacent Greenfields Farm Shop, Station Road, Donnington, Telford, Shropshire, TF2 8JY	GR	0.24	1
<i>Cuckoo Oak</i>					
	W2012/0535	Land adjacent to, 14 Cuckoo Oak Green, Telford, Shropshire, TF7 4HT	GR	0.08	2
<i>Dawley Magna</i>					
	W2013/0742	10b Burton Street, Dawley, Telford, Shropshire, TF4 2ES	FE	0.03	1

FR - Former Residential FE - Former Employment OB - Other Brownfield GR - Greenfield

Ward Name

	Application No	Address	Previous Use	Hectares	Completed
Donnington	W2011/0256	Dulce Domum, Land adjacent, Heath Hill, Dawley, Telford, Shropshire,	FR	0.11	1
	W2011/0257	Dulce Domum, Land adjacent, Heath Hill, Dawley, Telford, Shropshire,	GR	0.10	1
	W2012/0280	Land adjacent, 23 Heath Hill, Dawley, Telford, Shropshire,	GR	0.03	1
	W2012/0846	Station Inn, Station Road, Dawley, Telford, Shropshire, TF4 2NJ	OB	0.06	1
Donnington	W2013/0876	14, 14A, 16 & 16A The Crescent, Donnington, Telford, Shropshire, TF2 8HD	FR	0.05	-4
	W2011/0633	Land to the Rear of the Former Bell Inn PH, The Fields, Donnington Wood, Telford, Shropshire, TF2 7PW	GR	0.17	1
	W2011/0677	Land at junction of Ash Lea Rd and Bradley Road, Telford, TF2 7RG	GR	0.09	5
	W2012/0027	Land adjacent 18, Hayward Avenue, Donnington, Telford, Shropshire,	GR	0.10	4
	W2013/0499	34-42 High Mount, Donnington, Telford, Shropshire, TF2 7NL	GR	0.30	-8
Edgmond					
	W2012/0808	Land adjacent to Rock Cottage, 39 Mill Lane, Tibberton, Shropshire, TF10 8NL	GR	0.14	1
Ercall Magna					
	W2013/0859	The Coach House, Church Road, High Ercall, Telford, Shropshire, TF6 6AF	FR	0.08	1
Hadley and Leegomery					
	W2011/0953	Gladstone House, Hadley, Telford, Shropshire, TF1 5NF	FR	0.82	-12
	W2012/0660	Glen Cottages, Brickhill Lane, Ketley, Telford, Shropshire, TF2 6SB	FR	0.24	-4
	W2012/0660	Glen Cottages, Brickhill Lane, Ketley, Telford, Shropshire, TF2 6SB	FR	0.24	9
	W2012/0979	1 & 2 South View, Trench Lock, Telford, Shropshire, TF1 5SU	FR	0.27	7
	W2012/0979	1 & 2 South View, Trench Lock, Telford, Shropshire, TF1 5SU	FR	0.27	-2
	W2012/0715	Parkdale, Hadley, Telford, Shropshire, TF1 6PE	GR	0.06	2

FR - Former Residential FE - Former Employment OB - Other Brownfield GR - Greenfield

Ward Name

	Application No	Address	Previous Use	Hectares	Completed
<i>Haygate</i>					
	W2012/0940	Edgbaston House, Walker Street, Wellington, Telford, Shropshire, TF1 1BD	FE	0.03	4
	W2008/0387	11, Church Street, Wellington, Telford, Shropshire.	FE	0.07	14
	W2010/0402	Flora Dugdale House, 27 Wrockwardine Road, Welling	FE	0.13	1
	W2012/0103	Land off, Grooms Alley, Wellington, Telford, Shropshire	GR	1.08	21
	W2011/0452	11 Church Street, Wellington, Telford, Shropshire, TF1 1DD	OB	0.03	10
<i>Horsehay and Lightmoor</i>					
	W2007/0145	Land at, Lawley Farm, Lawley	FE	4.10	2
	W2012/0347	Falcons Rest, Former Doseley Works, Doseley, Telford, Shropshire,	FR	0.21	1
	W2011/0093	Lawley Farm, Dawley Road, Lawley, Telford, Shropshire.	GR	0.92	18
	W2011/0500	Phase 1, The Croppings, Lightmoor, Telford, Shropshire,	GR	4.90	50
	W2011/0506	Land at Lightmoor, Phases 3 & 4, Telford, Shropshire.	GR	2.34	2
	W2011/0851	Lawley Farm, Dawley Road, Lawley, Telford	GR	0.36	16
	W2012/0419	Lawley Phase 6, Dawley Road, Lawley , Telford, Shropshire.	GR	11.05	83
	W2010/0620	Doseley Works, Doseley, Telford, Shropshire, TF4 3	OB	2.14	15
	W2012/0292	Horsehay Limited, Horsehay House, Bridge Road, Horsehay, Telford, Shropshire, TF4 3PY	OB	0.13	2
	W2013/0510	Wellfield Cottage, Lawley Village, Glendale, Lawley, Telford, Shropshire, TF4 2PL	OB	0.17	-1
	W2007/0948	Land off, Dawley Road, Lawley	OB	7.10	1
<i>Ironbridge Gorge</i>					
	W2011/0828	Land Adj The Firs Guest House, 32 Buildwas Road, Ironbridge, Telford, TF8 7BJ	GR	0.03	1

FR - Former Residential FE - Former Employment OB - Other Brownfield GR - Greenfield

Ward Name

	Application No	Address	Previous Use	Hectares	Completed
<i>Ketley and Oakengates</i>					
	W2010/0200	Capewell Works, Sommerfield Road, Trench Lock, Tel	FE	9.53	59
	W2011/0019	Land adjacent to Coronation Bungalow, Station Fields, Oakengates, Telford, Shropshire, TF2 6DH	GR	0.11	1
	W2011/0852	Capewell Works, Sommerfield Road, Trench Lock, Telford, Shropshire,	GR	9.26	1
	W2011/1037	The Walker Institute, Hartsbridge Road, Oakengates, Telford, Shropshire, TF2 6BA	GR	0.43	6
	W2010/0521	Telford Millennium Community, Ketley, Telford, Shropshire,	OB	2.48	19
	W2006/0663	LAND ADJACENT TO HOMELANDS CARAVAN PARK, MOSSEY GREEN, TELFORD	OB	0.30	2
<i>Lawley and Overdale</i>					
	W2010/0627	Ironstone Square, Lawley	GR	3.44	23
	W2011/0488	Phases 3 & 4 Lawley Village, Lawley Drive, Lawley, Telford,	GR	25.98	93
	W2011/0557	Land adjacent 16 Mannerley Lane, The Rock, Telford, Shropshire, TF3 5AX	GR	0.03	2
	W2011/0800	Lawley Square, Newdale Valley, Lawley, Telford, Shropshire	GR	3.50	32
	W2011/1090	Ironstone Square, Lawley, Telford, Shropshire	GR	0.44	60
	W2013/1008	21 Valley Road, Overdale, Telford, Shropshire, TF3 5BD	OB	0.03	1
<i>Madeley</i>					
	W2012/0739	86 Burnt Hall Lane, Madeley, Telford, Shropshire, TF7 5ER	GR	0.06	2
	W2008/1310	30, Park Street, Madeley, Telford, Shropshire.	OB	0.04	4
<i>Malinslee</i>					
	W2013/0070	Land to rear of, 33 Church Road, Dawley, Telford, Shropshire	GR	0.02	1
	W2008/0302	Land at the junction of, King Street, Dawley, Telford, Shropshire.	OB	0.10	2

FR - Former Residential FE - Former Employment OB - Other Brownfield GR - Greenfield

Ward Name

	Application No	Address	Previous Use	Hectares	Completed
<i>Muxton</i>					
	W2009/0542	Muxton C2/C3, Marshbrook Way, Muxton, Telford, Shropshire.	GR	5.99	26
	W2012/0178	Land adjacent to, 126 Fieldhouse Drive, Muxton, Telford, Shropshire, TF2 8PJ	GR	0.06	1
	W2012/0371	Muxton C2, C3, Marshbrook Way, Muxton, Telford, Shropshire,	GR	6.01	3
	W2012/0408	Land off Meadow Road, Marshbrook Way, Muxton, Telford, Shropshire,	GR	0.41	12
	W2012/0709	C3, C2, Marshbrook Way, Muxton, Telford, Shropshire,	GR	0.87	17
	W2010/0063	7 Fieldhouse Drive, Muxton, Telford, Shropshire, TF2 8JQ	OB	0.13	2
<i>Newport East</i>					
	W2012/0479	48 Stafford Road, Newport, Shropshire, TF10 7NA	FE	0.10	1
	W2012/0211	Land To The Rear Of, Maynards Croft, Newport, Shropshire, TF10 7SZ	GR	0.91	12
<i>Newport North</i>					
	W2011/0653	91 Masons Place, Newport, Shropshire, TF10 7JT	GR	0.03	1
<i>Newport South</i>					
	W2011/0489	60A & 60B Upper Bar, Newport, Shropshire	FE	0.01	3
	W2011/0334	Former Newport Business Park, Audley Road, Newport, Shropshire, TF10 7DP	FE	1.52	14
	W2011/0285	Land Off Upper Bar, Newport, Shropshire TF10 7EJ	FE	0.24	6
	W2014/0069	Site of 27 and land adjacent, Upper Bar, Newport, Shropshire	FR	0.06	-1
	W2012/0180	Land off, Upper Bar, Newport, Shropshire, TF10 7EJ	GR	0.09	3
<i>Park</i>					
	W2013/0428	26 Vineyard Road, Wellington, Telford, Shropshire, TF1 1HB	FE	0.06	1
	W2011/0245	69 Admaston Road, Wellington, Telford, Shropshire TF1 3NL	GR	0.37	5

FR - Former Residential FE - Former Employment OB - Other Brownfield GR - Greenfield

Ward Name

	Application No	Address	Previous Use	Hectares	Completed
Priorslee					
	W2011/0835	Phases 2 & 9, Redhill Clay Pit, Redhill Way, St Georges, Telford, Shropshire,	GR	1.67	34
	W2010/0731	Redhill Clay Pit, Redhill Way, St Georges, Shropshire,	OB	1.67	3
	W2012/0587	Redhill Clay Pit, Redhill Way, St Georges, Telford, Shropshire,	OB	1.00	30
St. Georges					
	W2012/0224	The Old Methodist Chapel, Church Street, St Georges, Shropshire, TF2 9JY	GR	0.04	1
	W2012/0915	Land adjacent 30 Freeston Avenue, St Georges, Telford, Shropshire	GR	0.02	2
	W2012/0951	The Fountain Inn, New Road, Wrockwardine Wood, Telford, Shropshire, TF2 6JZ	OB	0.02	8
	W2013/0503	Stafford Place, 2 Church Street, St. Georges, Telford, Shropshire, TF2 9JQ	OB	0.01	1
The Nedge					
	W2010/0082	Stirchley Grange, Stirchley Village, Stirchley, Telford, Shropshire.	FR	0.11	2
Woodside					
	W2009/0051	Land at, Park Lane, Woodside, Telford, Shropshire.	OB	4.23	29
Wrockwardine					
	W2008/1295	Keepers Cottage, Buildwas Lane, Little Wenlock, Shropshire.	FR	0.77	1
	W2009/0490	Longden Mill Farmhouse, Longdon-On-Tern, Shropshire.	FR	0.21	2
	W2009/0490	Longden Mill Farmhouse, Longdon-On-Tern, Shropshire.	FR	0.21	-1
	W2010/0622	Aston Hall Farm, Aston Hall, Aston, Telford, Shropshire, TF6 5AQ	FR	0.14	-1
	W2010/0622	Aston Hall Farm, Aston Hall, Aston, Telford, Shropshire, TF6 5AQ	FR	0.14	2
	W2012/0063	Land adjacent to, 26 Burnell Road, Admaston, Telford, Shropshire, TF5 0BQ	GR	0.04	1
	W2009/0780	Farm Buildings, Aston Hall Farm, Aston, Shropshire.	GR	0.65	8

FR - Former Residential FE - Former Employment OB - Other Brownfield GR - Greenfield

Ward Name

Application No	Address	Previous Use	Hectares	Completed
W2011/1058	Land off, Dalefield Drive, Admaston, Telford, Shropshire, TF5 0DP	GR	0.25	6
W2010/0332	The Huntsman Inn, Wellington Road, Little Wenlock,	OB	0.25	3
TOTALS			129.31	842

FR - Former Residential FE - Former Employment OB - Other Brownfield GR - Greenfield

Appendix 2 - Residential Sites Under Construction and Plots Started 2013/14

Ward Name	Application	Address	Previous Use	Ha	Total Comp	Comp 13/14	Not Started	Started
FULL GRANTED								
<i>Arleston</i>								
	W2007/0535	Site B, Limekiln Lane, Wellington	FE	3.70	102	24	9	14
	W2012/0553	45-51 Princess Avenue, Arleston, Telford, Shropshire, TF1 2LJ	FR	0.13	0	0	0	5
	W2013/0207	Garages to rear of 44 & 46 Dawley Road, Arleston, Telford, Shropshire	FR	0.00	0	0	0	4
	W2013/0341	The Former Vicarage, Church Walk, Wellington, Telford, Shropshire	FR	0.09	2	2	2	0
<i>Brookside</i>								
	W2013/0801	112 - 140 & Brookside Youth Club, Beaconsfield, Brookside, Telford, Shropshire, TF3 1NJ	FR	0.42	-37	-37	18	0
	W2012/0866	Land off Burford, Brookside, Telford, Shropshire,	OB	0.00	0	0	0	2
<i>Church Aston and Lilleshall</i>								
	W2012/0448	Land to rear of, 14 & 14a Humber Lane, Donnington, Telford, Shropshire,	GR	0.00	0	0	0	1
	W2012/0139	Hill Farm House, Land adjacent, Old Farm Lane, Lilleshall, Newport, Shropshire,	GR	0.00	0	0	0	21
<i>College</i>								
	W2008/0227	Land at, Urban Gardens, Wellington, Telford, Shropshire.	OB	0.06	0	0	0	3
	W2007/0667	Telford Islamic Centre, 88, King Street, Wellington	OB	0.20	0	0	0	1
<i>Cuckoo Oak</i>								
	W2012/0887	Site A, B, C, D & E, Sutton Hill Local Centre, Sutton Hill, Telford, Shropshire	GR	0.00	0	0	29	20
<i>Donnington</i>								
	W2013/0876	14, 14A, 16 & 16A The Crescent, Donnington, Telford, Shropshire, TF2 8HD	FR	0.05	0	0	0	3
	W2013/0848	60 Hayward Avenue, Donnington, Telford, Shropshire, TF2 8DG	GR	0.00	0	0	0	1
<i>Ercall</i>								
	W2012/0303	Land at 349 Holyhead Road, Wellington, Telford, Shropshire, TF1 2EZ	GR	0.00	0	0	0	1
	W2014/0051	62 Wrekin Road, Wellington, Telford, Shropshire, TF1 1RJ	OB	0.00	0	0	0	4
	W2013/0545	62 Wrekin Road, Wellington, Telford, Shropshire, TF1 1RJ	OB	0.00		0	0	10
<i>Ercall Magna</i>								
	W2013/0641	Poultry Farm, Walton Grange, Walton, High Ercall, Shropshire, TF6 6AR	GR	0.00	0	0	0	1

FR - Former Residential

FE - Former Employment

OB - Other Brownfield

GR - Greenfield

Ward Name	Application	Address	Previous Use	Ha	Total Comp	Comp 13/14	Not Started	Started
Great Dawley	W2012/0314	Land adjacent The Cleveland Arms, High Ercall, Telford, Shropshire, TF6 6AE	OB	0.00	0	0	4	2
	W2013/0400	Land adjacent to, 33 Church Road, Dawley, Telford, Shropshire	FR	0.00	0	0	0	2
Hadley and Leegomery								
	W2012/0979	1 & 2 South View, Trench Lock, Telford, Shropshire, TF1 5SU	FR	0.27	7	7	0	2
	W2012/0886	Land between 121 & 125, Hadley Park Road, Hadley, Telford, Shropshire,	GR		0	0	0	14
	W2013/0504	Land adjacent Wayside, Horton, Telford, Shropshire,	GR	0.00	0	0	0	1
	W2009/0546	5, Castle Street, Hadley, Telford, Shropshire.	GR	0.02	0	0	0	2
	W2012/0574	Land adjacent 16 Ripley Close, Leegomery, Telford, Shropshire, TF1 6YY	GR	0.00	0	0	0	2
	W2004/0879	THE OLD POST OFFICE, 27, HIGH STREET, Hadley	OB	0.10	0	0	0	3
Haygate								
	W2012/0103	Land off, Grooms Alley, Wellington, Telford, Shropshire	GR	1.08	0	21	0	19
Horsehay and Lightmoor								
	W2009/0308	Land adjacent to, 34, Wellington Road, Horsehay, Telford, Shropshire.	FR	0.09	0	0	0	1
	W2013/0432	1 Pool Hill Road, Horsehay, Telford, Shropshire, TF4 3AU	FR	0.00	0	0	0	1
	W2012/0292	Horsehay Limited, Horsehay House, Bridge Road, Horsehay, Telford, Shropshire, TF4 3PY	OB	0.13	2	2	0	5
Ketley and Oakengates								
	W2007/1651	Land adjacent to, 62, Hartshill, Oakengates	FR	0.10	0	0	0	1
	W2012/0883	Land off, Ketley Park Road, Ketley, Telford, Shropshire, TF1 5BF	GR	0.00	0	0	0	12
	W2011/1037	The Walker Institute, Hartsbridge Road, Oakengates, Telford, Shropshire, TF2 6BA	GR	0.43	6	6	0	8
	W2013/0096	Ketley Millennium Village, Holyhead Road, Ketley, Telford, Shropshire	OB	0.00	0	0	334	41
	W2013/0561	Plots 39 & 40, 42-46, 48-52, 58-60 & 62, Sommerfeld Road, Hadley, Telford, Shropshire,	OB	0.00	0	0	11	5
	W2006/0663	LAND ADJACENT TO HOMELANDS CARAVAN PARK, MOSSEY GREEN, TELFORD	OB	0.30	0	2	10	0
	W2009/0215	3, Holyhead Road, Oakengates, Telford, Shropshire.	OB	0.07	0	0	0	2
	W2012/0881	Land Off, Ketley Park Road, Ketley, Telford, Shropshire	OB	0.00	0	0	0	86
	W2013/0562	Plots, 66, 68, 71 & 76 Sommerfeld Road, Hadley, Telford, Shropshire,	OB	0.00	0	0	3	1
Lawley and Overdale								
	W2010/0561	30 Woodrush Heath, The Rock, Telford, Shropshire,	FR	0.00	0	0	0	2

FR - Former Residential FE - Former Employment OB - Other Brownfield GR - Greenfield

Ward Name	Application	Address	Previous Use	Ha	Total Comp	Comp 13/14	Not Started	Started
Madeley								
	W2010/0771	9 Park Street, Madeley, Telford, Shropshire, TF7 5	FR	0.00	0	0	0	3
	W2011/0960	Land to rear of , 25 Coronation Crescent, Madeley, Telford, Shropshire, TF7 5EQ	FR	0.00	0	0	0	5
	W2011/1075	Former ATS Euromaster, Queen Street, Madeley, Telford, Shropshire, TF7 4BH	GR	0.00	0	0	0	1
Malinslee								
	W2008/0302	Land at the junction of, King Street, Dawley, Telford, Shropshire.	OB	0.10	2	2	8	0
	W2010/0513	The former White Hart, Hinkshay Road, Dawley, Shropshire, TF4 3PA	OB	0.00	0	0	0	11
	W2012/0787	The Former White Hart Inn, Hinkshay Road, Dawley, Telford, Shropshire,	OB	0.00	0	0	0	3
Muxton								
	W2004/0457	FERNLEIGH BUNGALOW, THE FIELDS, DONNINGTON, TELFORD, SHROPSHIRE.	FR	0.06	0	0	0	1
	W2013/0292	Land off, St Matthews Road, Donnington, Telford, Shropshire	GR	0.00	0	0	0	26
	W2010/0199	Land At, Ambleside Way, Donnington Wood, Telford, Shropshire	OB	0.20	3	3	0	2
Newport East								
	W2011/0874	48 Stafford Road , Newport, Shropshire, TF10 7NA	FE	0.00	0	0	2	0
	W2011/0602	Tan Bank Garage, Tan Bank, Newport, Shropshire, TF10 7LJ	FE	0.00	0	0	0	3
	W2012/0211	Land To The Rear Of, Maynards Croft, Newport, Shropshire, TF10 7SZ	GR	0.91	12	12	2	20
Newport North								
	W2003/0872	Land rear of, Forton Road Motor Sales, Forton Road	FR	0.40	0	0	0	6
Newport South								
	W2011/0334	Former Newport Business Park, Audley Road, Newport, Shropshire, TF10 7DP	FE	1.52	14	14	33	14
	W2013/1017	30 Upper Bar, Newport, Shropshire, TF10 7EJ	FR	0.00	0	0	0	1
	W2014/0069	Site of 27 and land adjacent, Upper Bar, Newport, Shropshire	FR	0.06	0	-1	6	0
Newport West								
	W2013/0732	58 High Street, Newport, Shropshire, TF10 7AQ	FE	0.00	1	0	0	7
	W2011/0354	23 High Street, Newport, Shropshire TF10 7AT	OB	0.00	0	0	0	6
	W2013/0449	Land to the rear of Chauffeured Classic Cars, 2A Lower Bar, Newport, Shropshire, TF10 7BQ	OB	0.00	0	0	0	1
	W2013/0076	87, 89 and 91 High Street, Newport, Shropshire, TF10 7AY	OB	0.00	0	0	8	6

FR - Former Residential FE - Former Employment OB - Other Brownfield GR - Greenfield

Ward Name	Application	Address	Previous Use	Ha	Total Comp	Comp 13/14	Not Started	Started
Priorslee								
	W2013/0423	Land off, Castle Farm Way, Priorslee, Telford, Shropshire	GR	0.00	0	0	0	1
St Georges								
	W2013/0208	Land at Furnace Road, Telford, Shropshire	OB	0.00	0	0	0	23
St. Georges								
	W2012/0993	Land adjacent 80, Freeston Avenue, St Georges, Telford, Shropshire,	GR	0.00	0	0	1	1
Woodside								
	W2009/0051	Land at, Park Lane, Woodside, Telford, Shropshire.	OB	4.23	61	29	106	19
Wrockwardine								
	W2011/1042	39 Coalmoor Lane, Coalmoor, Telford, Shropshire, TF4 3QB	GR	0.00	0	0	0	1
	W2012/0508	Land to the rear of Orchard House, Bratton Road, Admaston, Telford, Shropshire, TF5 0AQ	GR	0.00	0	0	0	1
	W2011/0352	Land at Broomfield House Farm, Allscott, Shropshire, Telford, TF6 5EQ	OB	0.00	0	0	0	2
					175	86	586	467
OUTLINE GRANTED								
Horsehay and Lightmoor								
	W2002/0392	Land at Lightmoor, Telford	OB	79.20	0	0	343	0
Lawley and Overdale								
	W2004/0980	LAND AT, LAWLEY, The Rock	GR	157.50	0	0	1949	0
					0	0	2292	0
RESERVE MATTERS GRANTED								
Horsehay and Lightmoor								
	W2009/0716	Land at Lightmoor Way, Lightmoor, Telford Telford.	GR	0.66	34	0	0	2
Muxton								
	W2009/0542	Muxton C2/C3, Marshbrook Way, Muxton, Telford, Shropshire.	GR	5.99	105	26	0	2
Wrockwardine								
	W2008/0587	Plot 3, Land off, Elmsdale Crescent, Admaston, Telford, Shropshire.	GR	0.16	0	0	0	1
					139	26	0	5
	FR - Former Residential	FE - Former Employment	OB - Other Brownfield	GR - Greenfield				

Ward Name	Application	Address	Previous Use	Ha	Total Comp	Comp 13/14	Not Started	Started
RESERVED MATTERS GRANTED								
<i>Ercall</i>								
	W2012/1021	Ercall Wood Technology College, Limekiln Lane, Wellington, TF1 2JA	OB	0.00	0	0	0	50
<i>Hadley and Leegomery</i>								
	W2013/0720	Land at, Sommerfeld Road, Hadley, Telford, Shropshire,	FE	0.00	0	0	170	15
<i>Horsehay and Lightmoor</i>								
	W2010/0817	Lawley Farm, Dawley Road, Lawley, Telford,	GR	9.37	8	0	0	1
	W2011/0506	Land at Lightmoor, Phases 3 & 4, Telford, Shropshire.	GR	2.34	2	2	44	20
	W2012/0300	Land adjacent Greenhurst, 14 St Lukes Road, Doseley, Telford, Shropshire, TF4 3BD	GR	0.00	0	0	0	3
	W2011/0500	Phase 1, The Croppings, Lightmoor, Telford, Shropshire,	GR	4.90	50	50	37	18
	W2011/0093	Lawley Farm, Dawley Road, Lawley, Telford, Shropshire.	GR	0.92	41	18	0	2
	W2012/0419	Lawley Phase 6, Dawley Road, Lawley , Telford, Shropshire.	GR	11.05	83	83	232	73
<i>Ketley and Oakengates</i>								
	W2010/0200	Capewell Works, Sommerfield Road, Trench Lock, Tel	FE	9.53	145	59	23	21
	W2011/0852	Capewell Works, Sommerfield Road, Trench Lock, Telford, Shropshire,	GR	9.26	12	1	2	0
<i>Lawley and Overdale</i>								
	W2011/0488	Phases 3 & 4 Lawley Village, Lawley Drive, Lawley, Telford,	GR	25.98	181	93	178	76
	W2013/0700	Lawley Phase 3 & 4, Lawley, Telford, Shropshire,	GR	0.00	0	0	1	2
<i>Muxton</i>								
	W2012/0709	C3, C2, Marshbrook Way, Muxton, Telford, Shropshire,	GR	0.87	0	17	0	10
	W2013/0891	Sutherland Arms, Wellington Road, Muxton, Telford, Shropshire, TF2 8NN	OB	0.00	0	0	0	8
<i>Priorslee</i>								
	W2012/0587	Redhill Clay Pit, Redhill Way, St Georges, Telford, Shropshire,	OB	1.00	30	30	56	22
					552	353	743	321
TOTALS				333.45	866	465	3,621	793

FR - Former Residential FE - Former Employment OB - Other Brownfield GR - Greenfield

Appendix 3 - Residential Sites with Plots Not Started 2013/14

Ward Name	Application No	Address	Previous Use	Hectares	Not Started
CERTIFICATE OF ALTERNATIVE APP					
Woodside					
	W2010/0629	Land adjoining, 156a, 156b Wildwood, Woodside, Tel	OB	0.00	1
Borough				0	1
DEMOLITION DETERMINATION PERM					
Muxton					
	W2012/0032	Westwinds, Old Willow Road & Flats 1 & 2, Merevale Way, Breton Park, Muxton, Telford, Sh	GR	0.00	-3
Borough				0	-3

FR - Former Residential FE - Former Employment OB - Other Brownfield GR - Greenfield

Ward Name	Application No	Address	Previous Use	Hectares	Not Started
FULL GRANTED					
	W2012/0240	Land at, Arleston, Telford, Shropshire	GR		103
	W2013/0563	Plots 1-11, Sommerfeld Road, Hadley, Telford, Shropshire	OB		11
	W2013/0222	7 Oxford Street, Oakengates, Shropshire	FE	0.20	1
Apley Castle					
	W2013/0953	Land adjacent, 39 Nightingale Way, Apley, Telford, Shropshire, TF1 6DT	GR	0.00	1
	W2012/0453	8 Greenfinch Close, Apley, Telford, Shropshire, TF1 6FY	GR	0.00	1
	W2006/1347	LAND OFF, POOL FARM AVENUE, Leegomery	FE	1.30	71
Arleston					
	W2013/0942	Electricity Sub Station Site, Arleston Lane, Arleston, Telford, Shropshire.	GR	0.00	1
	W2013/0341	The Former Vicarage, Church Walk, Wellington, Telford, Shropshire	FR	0.09	2
	W2012/0432	11 Dawley Road, Arleston, Telford, Shropshire, TF1 2HW	OB	0.00	2
	W2012/0093	Electricity Sub Station Site, Arleston Lane, Arleston, Telford, Shropshire,	GR	0.00	1
	W2012/0069	Ercall Wood Technology College, Golf Links Lane, Wellington, Telford, Shropshire, TF1 2DT	EDU	0.00	130
	W2010/0775	160 Holyhead Road, Wellington, Telford, Shropshire	GR	0.00	1
	W2007/0535	Site B, Limekiln Lane, Wellington	FE	3.70	9
Brookside					
	W2013/0801	112 - 140 & Brookside Youth Club, Beaconsfield, Brookside, Telford, Shropshire, TF3 1NJ	FR	0.42	18
Church Aston and Lilleshall					
	W2010/0413	Hoo Hall, The Hoo, Preston, Telford, Shropshire, T	OB	0.00	2
	W2013/0726	Pave Lane Farm, Newport, Shropshire, TF10 9AX	GR	0.00	1
	W2013/0074	Green Bank, Pitchcroft Lane, Woodcote, Newport, Shropshire, TF10 9AU	FR	0.22	1
College					
	W2013/1039	45 Victoria Avenue, Wellington, Telford, Shropshire, TF1 1NN	FR	0.00	0
	W2010/0487	Charlton Arms Hotel, Church Street, Wellington, Telford, Shropshire, TF1 1DG	OB	0.00	41
FR - Former Residential FE - Former Employment OB - Other Brownfield GR - Greenfield					

Ward Name	Application No	Address	Previous Use	Hectares	Not Started
Cuckoo Oak	W2013/0306	27-31 High Street, Wellington, Telford, Shropshire, TF1 1JW	OB	0.00	12
	W2012/0887	Site A, B, C, D & E, Sutton Hill Local Centre, Sutton Hill, Telford, Shropshire	GR	0.00	29
	W2012/0537	29 Solway Drive, Sutton Hill, Telford, Shropshire, TF7 4JA	FR	0.00	1
Dawley Magna	W2013/0017	Unit 5, Holland Court, High Street, Dawley, Telford, Shropshire, TF4 2EX	FE	0.00	1
	W2011/0041	3 Southall Road, Dawley, Telford, Shropshire, TF4 3NE	OB	0.00	1
	W2011/0052	The Queens Arms, Southall Road, Dawley, Telford TF4 3LY	OB	0.00	3
	W2010/0235	The Lord Hill Inn, High Street, Dawley, Telford, S	OB	0.01	1
	W2011/0408	The Bungalow, Rednal Fields, Dawley, Telford, Shropshire, TF4 3HQ	FR	0.00	2
	W2012/0784	16 Holly Road, Little Dawley, Telford, Shropshire, TF4 3HB	OB	0.00	2
Donnington	W2013/0499	34-42 High Mount, Donnington, Telford, Shropshire, TF2 7NL	GR	0.30	16
	W2012/0416	Land Adjacent To, 12 Jubilee Avenue, Donnington, Telford, Shropshire, TF2 8HN	GR	0.00	2
	W2013/0487	7 High Mount, Donnington, Telford, Shropshire, TF2 7NL	FR	0.00	1
	W2011/0803	72, 72B Furnace Lane, Trench, Telford, Shropshire, TF2 7JE	OB	0.00	1
	W2011/0942	Land formally 11, Queens Road, Donnington, Telford, Shropshire, TF2 8DB	GR	0.00	1
	W2011/0011	The Old Lodge, School Road, Donnington, Telford, Shropshire, TF2 8HT	OB	0.00	8
	W2013/0977	Tara, Oakengates Road, Donnington, Telford, Shropshire, TF2 7LQ	GR	0.00	9
	W2013/1027	Land corner of Queens Road/Church Road, Donnington, Telford, Shropshire	GR	0.00	9
Edgmond	W2011/0343	The Coddon Sports & Social Club, Wellington Road, Donnington, Telford, Shropshire, TF2 8	GR	0.00	25
	W2012/0207	Rose Green, Tibberton, Newport, Shropshire, TF10 8NN	GR	0.00	1
	W2013/0625	Brook Farm, Chetwynd, Newport, Shropshire, TF10 8BL	OB	0.00	1
	W2013/0398	The Workshop, High Street, Edgmond, Newport, Shropshire, TF10 8JW	OB	0.00	0

FR - Former Residential FE - Former Employment OB - Other Brownfield GR - Greenfield

Ward Name	Application No	Address	Previous Use	Hectares	Not Started
Ercall					
	W2010/0220	Birtley House, 285 Holyhead Road, Wellington, Telf	OB	0.00	1
	W2010/0089	Highfield House, 47 Wrekin Road, Wellington, Telford	FE	0.00	13
	W2013/0938	Land off Holyhead Road, Wellington, Telford, Shropshire, TF6 5AB	GR	0.00	140
	W2013/0265	The Mount, 1 Haygate Road, Wellington, Telford, Shropshire	OB	0.00	18
Ercall Magna					
	W2011/0923	Lower House Farm, Waters Upton, Telford, Shropshire, TF6 6PB	GR	0.00	2
	W2007/0986	22, Waters Upton	FR	0.10	1
	W2010/0076	Eyton Hall, Eyton, Shropshire.	GR		1
	W2011/0575	Land to the South of, St Michaels Church, Waters Upton, Shropshire, TF6 6NP	GR	0.00	8
	W2013/0273	Lyndale, Middle Lane, Cold Hatton, Telford, Shropshire, TF6 6QA	OB	0.00	0
	W2013/0338	The Quarry, Waters Upton, Telford, Shropshire, TF6 6NP	OB	0.00	1
	W2012/0314	Land adjacent The Cleveland Arms, High Ercall, Telford, Shropshire, TF6 6AE	OB	0.00	4
	W2013/0036	Brookwood, Crudgington Green, Crudgington, Shropshire, TF6 6JY	OB	0.00	1
Hadley and Leegomery					
	W2011/0357	Land at 82 Beveley Road, Oakengates, Telford, Shropshire, TF2 6SD	GR	0.00	1
	W2012/0133	Land adjacent to, Dairy House Farm, Horton, Telford, Shropshire, TF6 6DR	GR	0.00	1
	W2012/0493	Land To The Rear Of 26a-32, Mafeking Road, Hadley, Telford, Shropshire,	FR	0.00	4
	W2013/1006	Land adjacent 32 Victoria Court, Hadley, Telford, Shropshire	GR	0.00	1
Haygate					
	W2013/0915	Land adjacent, The Birches, 57 Wrockwardine Road, Wellington, Telford, Shropshire, TF1 3D	GR	0.00	1
	W2014/0088	Land adjacent to The Croft, Haygate Road, Wellington, Telford, Shropshire, TF1 2BW	GR	0.00	1
	W2011/0842	23 Queen Street, Wellington, Telford, Shropshire, TF1 1EH	GR	0.00	1
Horsehay and Lightmoor					
	W2012/0753	Land adjacent to, Wellfield Cottage, Lawley Village, Telford, Shropshire, TF4 2PL	GR	0.00	1
	W2012/0301	Land adjacent Greenhurst, 14 St Lukes Road, Doseley, Telford, Shropshire, TF4 3BD	GR	0.00	1

FR - Former Residential FE - Former Employment OB - Other Brownfield GR - Greenfield

Ward Name	Application No	Address	Previous Use	Hectares	Not Started
	W2010/0619	5 Bridge Road, Horsehay, Telford, Shropshire, TF4	FR	0.00	1
	W2012/0981	The Finney, 13 Burroughs Bank, Lightmoor, Telford, Shropshire, TF4 3QS	OB	0.00	0
<i>Ironbridge Gorge</i>					
	W2013/0665	Land adjacent to, Puddleduck Cottage, 234 Salthouse Road, Jackfield, Telford, Shropshire, T	GR	0.00	2
	W2012/0485	Land Adjacent To, Humay, Hodge Bower, Ironbridge, Telford, Shropshire, TF8 7QQ	GR	0.00	1
<i>Ketley and Oakengates</i>					
	W2011/1046	Land adjacent to, 43 West Road, Ketley Bank, Telford, Shropshire, TF2 0DJ	GR	0.00	1
	W2013/0562	Plots, 66, 68, 71 & 76 Sommerfeld Road, Hadley, Telford, Shropshire,	OB	0.00	3
	W2013/0422	Land adjacent to, Churchill Drive, Ketley Bank, Telford, Shropshire, TF2 0BT	GR	0.00	0
	W2014/0094	Land adjacent, 9 Weavers Rise, Ketley Bank, Telford, Shropshire	GR	0.00	1
	W2013/0096	Ketley Millennium Village, Holyhead Road, Ketley, Telford, Shropshire	OB	0.00	334
	W2012/0937	Land adjacent, 1 The Cloisters, Wombridge, Telford, Shropshire	GR	0.00	1
	W2012/0764	7 Hartshill Avenue, Oakengates, Telford, Shropshire, TF2 6AR	GR	0.00	1
	W2012/0425	Grasmere, Red Lees, Ketley, Telford, Shropshire, TF1 5DE	GR	0.00	1
	W2012/0358	Land between 44 & 45 Sandbrook, Ketley, Telford, Shropshire	GR	0.00	2
	W2013/0561	Plots 39 & 40, 42-46, 48-52, 58-60 & 62, Sommerfeld Road, Hadley, Telford, Shropshire,	OB	0.00	11
	W2010/0586	4 Woodwell, Red Lake, Telford, Shropshire. TF1 5EA	GR	0.00	1
	W2011/0809	Hi View, Old Park Road, Ketley Bank, Telford, Shropshire, TF2 0DG	GR	0.00	1
	W2006/0663	LAND ADJACENT TO HOMELANDS CARAVAN PARK, MOSSEY GREEN, TELFORD	OB	0.30	10
<i>Lawley and Overdale</i>					
	W2011/0435	Land at 29 Clares Lane Close, The Rock, Telford, Shropshire, TF3 5DA	GR	0.00	1
	W2012/0890	Land adjacent Windy Ridge, Rock Road, The Rock, Ketley, Telford, Shropshire	FR	0.00	1
<i>Madeley</i>					
	W2013/0469	Upper House, Church Street, Madeley, Telford, Shropshire, TF7 5BW	FE	0.00	0
	W2011/1032	Land off, Wrekin View, Madeley, Telford, Shropshire, TF7 5UF	GR	0.00	3
	W2013/0019	13 High Street, Madeley, Telford, Shropshire, TF7 5AQ	OB	0.00	1

FR - Former Residential FE - Former Employment OB - Other Brownfield GR - Greenfield

Ward Name	Application No	Address	Previous Use	Hectares	Not Started
	W2013/0325	Lee Dingle, 48 Lees Farm Drive, Madeley, Telford, Shropshire, TF7 5SU	FR	0.00	-1
	W2013/0705	27 Park Street, Madeley, Telford, Shropshire, TF7 5LB	FR	0.00	0
	W2014/0080	39 Court Street, Madeley, Telford, Shropshire, TF7 5ED	FR	0.00	0
	W2011/0894	Station House, Barkers Court, Madeley, Telford, Shropshire, TF7 5AL	GR	0.00	1
	W2013/0667	19-24 Coronation Crescent, Madeley, Telford, Shropshire, TF7 5EQ	FR	0.00	11
Malinslee					
	W2008/0302	Land at the junction of, King Street, Dawley, Telford, Shropshire.	OB	0.10	8
	W2010/0283	Land off, Arden Avenue, Dawley, Telford, Shropshir	FR	0.03	1
Muxton					
	W2011/0005	Land at, Wellington Road, Muxton, Telford, Shropsh	GR	0.00	0
	W2013/0058	Land off, Muxton Lane, Muxton, Telford, Shropshire, TF2 8PF	GR	0.00	0
	W2013/0936	Land off Lodge Road, Telford, Shropshire	GR	0.00	25
Newport East					
	W2011/0874	48 Stafford Road , Newport, Shropshire, TF10 7NA	FE	0.00	2
	W2012/0211	Land To The Rear Of, Maynards Croft, Newport, Shropshire, TF10 7SZ	GR	0.91	2
	W2013/0353	Land adjacent, 31 Water Lane, Newport, Shropshire, TF10 7LD	GR	0.00	0
Newport North					
	W2010/0678	Kings Head Mobile Home Park, Green Lane, Newport, Shropshire, TF10 7LG	GR	0.00	1
Newport South					
	W2011/0334	Former Newport Business Park, Audley Road, Newport, Shropshire, TF10 7DP	FE	1.52	33
	W2013/0870	The Maltings, Springfields, Newport, Shropshire, TF10 7EZ	OB	0.00	1
	W2014/0069	Site of 27 and land adjacent, Upper Bar, Newport, Shropshire	FR	0.06	6
Newport West					
	W2011/0821	Land At, Wellington Road, Newport, Shropshire,	GR	0.00	285
	W2013/0076	87, 89 and 91 High Street, Newport, Shropshire, TF10 7AY	OB	0.00	8
	W2013/0574	45 Wrekin Avenue, Newport, Shropshire, TF10 7HQ	FR	0.00	1

FR - Former Residential FE - Former Employment OB - Other Brownfield GR - Greenfield

Ward Name	Application No	Address	Previous Use	Hectares	Not Started
Park	W2013/0490	Smallwood Lodge Tearooms, Upper Bar, Newport, Shropshire, TF10 7AP	OB	0.00	0
	W2011/0347	Richmond House, Donnerville Gardens, Admaston, Telford, Shropshire, TF5 0DE	GR	0.00	4
	W2013/0428	26 Vineyard Road, Wellington, Telford, Shropshire, TF1 1HB	FE	0.06	0
	W2012/0942	Land between 8 & 16, Hordley Road, Wellington, Telford, Shropshire	GR	0.00	4
Priorslee	W2012/0862	Land to rear of, Erindale, Moss Road, Wrockwardine Wood, Telford, Shropshire.	FR	0.18	4
	W2010/0152	Redhill Clay Pit, Redhill Way, St Georges, Telford, Shropshire	GR	0.00	120
	W2013/0448	The Nyth, Moss Road, Wrockwardine Wood, Telford, Shropshire, TF2 7BL	OB	0.00	10
St. Georges	W2013/0642	The Fountain Inn Car Park, New Road, Wrockwardine Wood, Telford, Shropshire	OB	0.00	2
	W2014/0130	Nolum, Station Hill, St Georges, Telford, Shropshire, TF2 9AB	FR	0.00	0
	W2012/0993	Land adjacent 80, Freeston Avenue, St Georges, Telford, Shropshire,	GR	0.00	1
	W2012/0528	Wayside, The Nabb, St Georges, Telford, Shropshire, TF2 9DA	FR	0.00	1
	W2012/0465	Land adjacent, The Trees Bungalow, The Nabb, St Georges, Telford, Shropshire, TF2 9BU	GR	0.00	1
	W2006/0927	TAFS, GOWER STREET, ST GEORGES, TELFORD, SHROPSHIRE.	FE	3.53	165
	W2013/0053	Land adjacent, 14 The Nabb, St Georges, Telford, Shropshire, TF2 9BY	GR	0.00	3
The Nedge	W2014/0047	Land adjacent 103 Boulton Grange, Randlay, Telford, Shropshire,	GR	0.00	1
	W2009/0326	Randlay Centre, Randlay Community Centre, Randlay, Telford, Shropshire.	OB	1.41	12
Woodside	W2011/0683	Denholme, Park Lane, Woodside, Telford, Shropshire, TF7 5HL	GR	0.00	1
	W2013/0920	Land adjacent Police Houses, 2 Park Lane, Woodside, Telford, Shropshire	GR	0.00	1
	W2011/1001	Land between, 46 & 47C Park Lane, Woodside, Telford, Shropshire,	OB	0.00	0
	W2010/0259	Rough Park House, Woodside Avenue, Woodside, Telfo	OB	0.00	23
	W2009/0051	Land at, Park Lane, Woodside, Telford, Shropshire.	OB	4.23	106

FR - Former Residential FE - Former Employment OB - Other Brownfield GR - Greenfield

Ward Name	Application No	Address	Previous Use	Hectares	Not Started
Wrockwardine					
	W2010/0017	Land at, Isombridge Farm, Isombridge, Shropshire.	GR	0.09	1
	W2012/0827	Land Adjacent To, Dovecote Grange, Bratton Road, Bratton, Telford, Shropshire, TF5 0BT	GR	0.00	0
	W2012/0504	Villa Farm, Grove Lane, Rodington, Shropshire, SY4 4QP	OB	0.00	2
	W2013/0649	Land to rear of Holly Acres, Long Lane, Telford, Shropshire	GR	0.00	12
	W2014/0065	Land adjacent, 10 Rushmoor, Telford, Shropshire	GR	0.00	2
	W2011/0390	Land adjacent to No 5, Bostock Close, Admaston, Shropshire, TF5 0AG	GR	0.00	1
	W2013/0867	Charlton Farm, Charlton, Telford, Shropshire, TF6 5ES	GR	0.00	1
	W2013/0436	Yew Tree House, Drummery Lane, Wrockwardine, Telford, Shropshire, TF6 5DH	OB	0.00	1
	W2013/0879	Land adjacent Millcroft, Walcot, Telford, Shropshire, TF6 5ER	GR	0.00	1
Wrockwardine Wood and Trench					
	W2011/0434	Land Adjacent 1 Furnace Lane, Trench, Shropshire, TF2 7JX	GR	0.00	2
	W2011/0249	News Express, Land adjacent, 90 Trench Road, Trench, Telford, Shropshire,	OB	0.00	1
	W2011/1065	Burton House, Plough Road, Wrockwardine Wood, Telford, Shropshire, TF2 7AR	OB	0.00	1
	W2011/1060	1 Greenlea Road, Trench, Telford, Shropshire, TF2 6PZ	GR	0.00	1
Borough				18.765	1971
FULL REFUSED					
Ercall Magna					
Appeal Allowe	W2008/0059	TERN FARM, LONGDON-ON-TERN	GR	1.01	7
Priorslee					
Appeal Allowe	W2012/0143	land at junction of Moss Road/Rookery Road, Wrockwardine Wood, Telford, Shropshire, TF2	FR	0.00	13
Borough				1.0124	20

FR - Former Residential FE - Former Employment OB - Other Brownfield GR - Greenfield

Ward Name	Application No	Address	Previous Use	Hectares	Not Started
OUTLINE GRANTED					
	W2012/0320	Land Off, Sommerfeld Road, Hadley, Telford, Shropshire,	OB		185
	W2012/0650	Doseley Works, Doseley, Telford, Shropshire, TF4 3BX	OB		460
	W2012/0769	Land off, Castle Farm Way, Priorslee, Telford, Shropshire	FE		600
	W2009/0914	Land at, Southwater, St Quentin Gate, Telford Town Centre, Telford, Shropshire.	OB		330
	w2007/1254	Plot E, Pool Hill/Doseley Road, Dawley, Telford, Shrops	GR		45
<i>Apley Castle</i>					
	W2011/0541	Land off, Peregrine Way, Leegomery	OB	9.10	100
<i>Arleston</i>					
	W2012/0547	20 Arleston Village, Arleston, Telford, Shropshire, TF1 2LX	FR	0.00	1
	W2013/0091	Land between 5 and 6 Forester Grove, Arleston, Telford, Shropshire	FR	0.00	4
	W2012/0337	Wendouree, High Street, Wellington, Telford, Shropshire, TF1 1JU	OB	0.00	1
	W2012/0548	20 Arleston Village, Arleston, Telford, Shropshire, TF1 2LX	FR	0.00	1
<i>College</i>					
	W2012/0200	125 King Street, Wellington, Telford, Shropshire, TF1 1NX	FE	0.00	13
<i>Dawley Magna</i>					
	W2011/0775	15 New Street, Dawley, Telford, Shropshire, TF4 3JU	GR	0.00	1
	W2011/0605	Netherwood, Heath Hill, Dawley, Telford, Shropshire, TF4 2JX	GR	0.00	2
	W2011/0185	Land at, Pool Hill Road/Station Road, Horsehay, Telford	GR	0.71	15
	W2011/0053	27 Heath Hill, Dawley, Telford, Shropshire, TF4 2JT	OB	0.00	6
	T91/0236a	Station Road	OB	0.36	2
	T74/0076a	Land off Majestic Way	GR	2.61	65
<i>Donnington</i>					
	W2013/0719	29 Queens Road, Donnington, Telford, Shropshire, TF2 8DA	FR	0.00	4

FR - Former Residential FE - Former Employment OB - Other Brownfield GR - Greenfield

Ward Name	Application No	Address	Previous Use	Hectares	Not Started
<i>Dothill</i>					
	T89/0223	Land adjoining BRJ School	GR	3.40	70
<i>Edgmond</i>					
	W2013/0379	Land adjacent 46 Tibberton, Shropshire, TF10 8NY	GR	0.00	2
	W2013/0297	Land off Edgmond Road, Newport, Shropshire	GR	0.00	0
<i>Ercall</i>					
	W2013/0032	17 Ercall Gardens, Wellington, Telford, Shropshire, TF1 1RD	GR	0.00	1
	W2011/0002	Cartridge World & Plumbing Centre, Alexandra Road, Wellington, Telford, Shropshire, TF1 1	FE	0.00	18
	W2011/0177	Land adjacent 77 Haygate Road, Wellington, Telford, Shropshire, TF1 2BJ	GR	0.00	2
<i>Ercall Magna</i>					
	W2013/0332	Land adjacent 34 Waters Upton, Telford, Shropshire	GR	0.00	1
	W2010/0053	Cedar Lodge, Waters Upton, Shropshire.	FR	0.00	1
	W2008/0619	Land adjacent to, The Old Rectory, Waters Upton	GR	0.55	12
<i>Hadley and Leegomery</i>					
	W2010/0004	Land to the rear of, 47, Church Street, Hadley, Telford, Shropshire.	FR	0.02	1
	W2011/0474	40 Castle Street, Hadley, Telford, TF1 5RA	OB	0.00	7
	W2011/1039	Land Adjacent to, 1-3 Castle Lane, Hadley, Telford, Shropshire, TF1 6RD	OB	0.00	3
	W2012/0401	Land to the side of 64 Mafeking Road, Hadley, Telford, Shropshire, TF1 5LB	GR	0.00	2
	W2013/0567	Caravan And Camping Centre, Stadium Way, Hadley, Telford, Shropshire, TF1 5NN	OB	0.00	14
	W2013/0606	Land Off, Hadley Park West, Hadley, Telford, Shropshire	GR	0.00	68
	W2011/0949	Gladstone House, Hadley, Telford, Shropshire, TF1 5NF	OB	0.00	24
<i>Horsehay & Lightmoor</i>					
	w2012/0926	Land off Lightmoor Way, Horsehay, Telford, Shropshire	OB		200
<i>Horsehay and Lightmoor</i>					
	W2011/0186	Plot C, Pool Hill Road, Horsehay, Telford, Shropshire,	GR	0.00	6
	T91/0236d	Pool Hill Road	OB	0.26	4

FR - Former Residential FE - Former Employment OB - Other Brownfield GR - Greenfield

Ward Name	Application No	Address	Previous Use	Hectares	Not Started
	W2002/0392	Land at Lightmoor, Telford	OB	79.20	343
	W2010/0111	Former Ibstock Brickworks, Brick Kiln Bank, Lightmoor, Telford, Shropshire, TF7 5LH	FE	0.00	100
	W2014/0081	Acorn Cottage, 36 Lawley Gate, Lawley, Telford, Shropshire, TF4 2NZ	GR	0.00	1
<i>Ketley and Oakengates</i>					
	T80/0001	Ketley Bank	OB	0.35	11
	W2011/0597	Redvers Guest House, Land adjacent, Holyhead Road, Oakengates, Telford, Shropshire, TF	GR	0.00	1
	W2012/0572	Land adjacent 8 East Road, Ketley Bank, Telford, Shropshire, TF2 0DE	OB	0.00	2
	W2013/0738	Land adjacent 36 Quarry Lane, Red Lake, Telford, Shropshire	GR	0.00	1
	W2011/0822	7 Hartshill Avenue, Oakengates, Telford, Shropshire, TF2 6AR	GR	0.00	2
	W2011/0645	Coronation Bungalow, Station Fields, Oakengates, Telford, Shropshire, TF2 6DH	FR	0.00	2
	W2012/0655	Land off, Bluebell Coppice, Ketley, Telford, Shropshire, TF1 5NE	GR	0.00	4
<i>Lawley and Overdale</i>					
	T74/0082a	Colliers Way/Acer Close	OB	5.98	163
	W2004/0980	LAND AT, LAWLEY, The Rock	GR	157.50	1949
	W2011/0979	Land to the North of, Grove Road, Overdale, Shropshire, TF3 5AW	GR	0.00	80
	T74/0082c	Park Lane	OB	0.20	5
<i>Madeley</i>					
	W2009/0937	Auto-Tech, Prince Street, Madeley, Telford, Shropshire.	OB	0.26	14
<i>Malinslee</i>					
	W2011/0711	Land to the rear of, 34 Bank Road, Dawley Bank, Telford, Shropshire, TF4 2AZ	GR	0.00	1
	W2012/0514	27 Church Road, Dawley, Telford, Shropshire, TF4 2AS	FR	0.00	1
<i>Muxton</i>					
	W2014/0008	Land rear of, 41, 43, 45, 47 Wellington Road, Muxton, Telford, Shropshire	GR	0.00	19
	W2014/0106	Land adjacent, 50 Wellington Road, Muxton, Telford, Shropshire	GR	0.00	3
<i>Newport North</i>					
	W2011/0179	Land at Broomfield Road, Newport, Shropshire	GR	0.00	30

FR - Former Residential FE - Former Employment OB - Other Brownfield GR - Greenfield

Ward Name	Application No	Address	Previous Use	Hectares	Not Started
Newport West					
	W2013/0898	Novascope House, Beaumaris Road, Newport, Shropshire, TF10 7BL	OB	0.00	4
	W2011/0930	Beechcroft, Upper Bar, Newport, Shropshire, TF10 7AP	GR	0.00	3
Park					
	W2012/0395	The Acorns, Donnerville Gardens, Admaston, Telford, Shropshire, TF5 0DE	FR	0.00	6
Priorslee					
	T86/0021	Donnington Wood (Rem)	OB	3.82	85
	W2013/0769	Land off, Castle Farm Way, Priorslee, Telford, Shropshire	GR	0.00	600
	T88/0216a	Land at Priorslee Road	GR	0.90	25
	S71/10	LAND AT, ST GEORGES ROAD, DONNINGTON, WROCKWARDINE WOOD	GR	0.40	24
	T88/0216b	Land at Priorslee Road	GR	2.21	75
St. Georges					
	W2013/0816	Land adjacent, 2 Moss Road, Wrockwardine Wood, Telford, Shropshire	GR	0.00	2
The Nedge					
	W2013/0808	Grange Park Primary School, Calcott, Stirchley, Telford, Shropshire, TF3 1YQ	EDU	0.00	37
	T91/0242	The Hem (Nedge)	GR	16.14	250
	T68/0020b	Land off Randlay Avenue	GR	8.00	26
	T68/0020a	Land off Randlay Avenue	GR	4.01	13
Woodside					
	W2012/0609	Land at Former Woodlands Primary School, Wensley Green, Telford, Shropshire, TF7 5NW	EDU		87
	W2011/0911	5 Brick Kiln Bank, Lightmoor, Telford, Shropshire, TF7 5PQ	FR	0.00	1
	T78/0114c	LAND OFF, STANIER DRIVE, MADELEY (RP2)	OB	1.29	30
	T78/0114a	LAND OFF, STANIER DRIVE, MADELEY (RP1)	OB	3.27	70
Wrockwardine					
	W2013/0886	Land adjacent, 19 Aldermead Close, Admaston, Telford, Shropshire	GR	0.00	9
	W2013/0033	21 Bratton Road, Bratton, Telford, Shropshire, TF5 0BT	GR	0.00	5

FR - Former Residential FE - Former Employment OB - Other Brownfield GR - Greenfield

Ward Name	Application No	Address	Previous Use	Hectares	Not Started
	W2011/0745	St Christophers Hall, Station Road, Admaston, Telford, Shropshire, TF5 0AL	OB	0.00	2
	T88/0229w	Arleston Lane East	OB	0.58	15
	T88/0229v	Arleston Lane West	OB	0.26	6
<i>Wrockwardine Wood and Trench</i>					
	W2012/0833	72 Trench Road, Trench, Telford, Shropshire, TF2 6PF	GR	0.00	1
	W2013/0806	Wrockwardine Wood Arts College, New Road, Wrockwardine Wood, Telford, TF2 6JZ	GR	0.00	53
Borough				301.38	6432
RESERVE MATTERS GRANTED					
<i>Hadley and Leegomery</i>					
	W2011/0992	Land at, Beveley Road, Ketley, Telford, Shropshire.	OB	0.39	20
<i>Haygate</i>					
	W2008/0786	Land adjacent to, 1, Admaston Road, Wellington, Telford, Shropshire.	OB	0.07	2
Borough				0.4593	22

FR - Former Residential FE - Former Employment OB - Other Brownfield GR - Greenfield

Ward Name	Application No	Address	Previous Use	Hectares	Not Started
RESERVED MATTERS GRANTED					
<i>Ercall</i>					
	W2013/0934	Land adjacent, 137 Haygate Road, Wellington, Telford, Shropshire, TF1 2DA	GR	0.00	1
<i>Hadley and Leegomery</i>					
	W2013/0720	Land at, Sommerfeld Road, Hadley, Telford, Shropshire,	FE	0.00	170
<i>Horsehay and Lightmoor</i>					
	W2011/0506	Land at Lightmoor, Phases 3 & 4, Telford, Shropshire.	GR	2.34	44
	W2012/0419	Lawley Phase 6, Dawley Road, Lawley , Telford, Shropshire.	GR	11.05	232
	W2011/0500	Phase 1, The Croppings, Lightmoor, Telford, Shropshire,	GR	4.90	37
<i>Ketley and Oakengates</i>					
	W2011/0852	Capewell Works, Sommerfield Road, Trench Lock, Telford, Shropshire,	GR	9.26	2
	W2012/0775	Land Adjacent To, Nova Espero, Hadley Road, Oakengates, Telford, Shropshire, TF2 6HJ	GR	0.00	1
	W2010/0544	Craiglea, Holyhead Road, Ketley, Telford, Shropshire, TF1 5AN	GR	0.00	1
	W2010/0200	Capewell Works, Sommerfield Road, Trench Lock, Tel	FE	9.53	23
<i>Lawley and Overdale</i>					
	W2013/0700	Lawley Phase 3 & 4, Lawley, Telford, Shropshire,	GR	0.00	1
	W2011/0488	Phases 3 & 4 Lawley Village, Lawley Drive, Lawley, Telford,	GR	25.98	178
<i>Newport East</i>					
	W2013/0354	48 Stafford Road, Newport, Shropshire, TF10 7NA	OB	0.00	2
<i>Priorslee</i>					
	W2012/0587	Redhill Clay Pit, Redhill Way, St Georges, Telford, Shropshire,	OB	1.00	56
Borough				64.06	748
TOTALS				385.7	9191

FR - Former Residential FE - Former Employment OB - Other Brownfield GR - Greenfield

Appendix 4a - Completed Employment Floorspace 2013/14

Application No	Address	Use Class	Previous Use	Sq M	Hectares
W2010/0126	Lord Hill Inn Dawley, Telford, Shropshire.	B1(a)		250	
W2010/0154	Plaza Two Telford Town Centre, Telford, Shropshire.	B1(a)		-160	
W2010/0551	2 Market Street Wellington TF1 1DT	B1(a)		-100	0.00
W2013/0334	South Staffs Hire Ltd, Hortonwood 7, Hortonwood, Telford, Shropshire, TF1 7GP	B1(a)		73	0.00
W2013/0428	26 Vineyard Road Wellington	B1(a)		-202	0.00
W2013/0670	Prospect House Unit 3 Halesfield 22 TF7 4QX	B1(a)		-168	0.00
W2013/0674	Lloyds Cottage The Lloyds Ironbridge TF8 7HH	B1(a)		700	0.09
W2013/0732	58 high Street Newport TF10 7AQ	B1(a)		-225	0.00
W2014/0090	Suite 2 Jesson House Stafford Court Stafford Park TF3 3BD	B1(a)		-225	0.00
W2012/0832	Site E Hortonwood 45 Hortonwood	B1(a)	GR	498	4.60
W2012/0922	Land off Hadley Road East Hadley	B1(a)	GR	730	0.42
W2010/0806	The Technical Centre Halesfield 7 Halesfield	B1(a)	PDL	200	1.01
W2011/0023	Hadley Castle Works Hadley	B1(a)	PDL	-469	12.60
W2011/0800	Lawley Square Newdale Valley Lawley	B1(a)	PDL	163	0.36
W2012/0431	Plot 4 Halesfield 23 Halesfield	B1(a)	PDL	80	0.52
W2012/0683	Unit A7 Hortonwood 10 Hortonwood	B1(a)	PDL	44	0.04
W2012/0863	Carter Towers Hadley Park West Hadley	B1(a)	PDL	-102	0.01
Use Class Net				1087	
Use Class Gross				2738	
W2013/0334	South Staffs Hire Ltd, Hortonwood 7, Hortonwood, Telford, Shropshire, TF1 7GP	B1(c)		-382	0.00
W2013/0450		B1(c)		-117	0.00
W2012/0922	Land off Hadley Road East Hadley	B1(c)	GR	155	0.42
W2010/0806	The Technical Centre Halesfield 7 Halesfield	B1(c)	PDL	2740	1.01
W2011/0453	The Quarry Waters Upton	B1(c)	PDL	-255	0.37
W2012/0324	Unit 15, Tweedale Court Tweedale Court Madeley	B1(c)	PDL	-65	0.01

Application No	Address	Use Class	Previous Use	Sq M	Hectares
Use Class Net				2076	
Use Class Gross				2895	
W2010/0155	Unit 14 Hadley Park Road, Hadley, Telford, Shropshire.	B2		-250	
W2013/0275		B2		-2178	0.00
W2013/0441	IT Rentals Technology House Halesfield 7 TF7 4NA	B2		994	0.00
W2013/0670	Prospect House Unit 3 Halesfield 22 TF7 4QX	B2		168	0.00
W2013/0694		B2		-115	0.00
W2013/0755	waterloo road Ketley TF1 5AY	B2		1000	0.00
W2013/0874	Western Power Distribution Ltd Epic Park Halesfield 6	B2		568	0.00
W2013/0951	Magna House Stafford Park 3	B2		660	0.00
W2013/1019	Lilleshall Grange Abby Road Lilleshall	B2		600	0.00
W2012/0832	Site E Hortonwood 45 Hortonwood	B2	GR	8470	4.60
W2011/0453	The Quarry Waters Upton	B2	PDL	255	0.37
W2012/0431	Plot 4 Halesfield 23 Halesfield	B2	PDL	60	0.52
W2012/0683	Unit A7 Hortonwood 10 Hortonwood	B2	PDL	179	0.04
W2012/0863	Carter Towers Hadley Park West Hadley	B2	PDL	34	0.01
W2012/0973	Mail Solutions Ltd Stafford Park 9 Stafford Park	B2	PDL	1199	1.33
W2013/0491	Unit 21 Hortonwood 33	B2	PDL	998	0.00
Use Class Net				12642	
Use Class Gross				15185	
W2013/0634	Telford Cultural & Leisure Centre 40 high Street Madeley	B8		15	0.00
W2013/0835		B8		-180	0.00
W2013/0912	Telford First SNU Church Stirchley Road Stirchley TF3 1DY	B8		0	0.00
W2013/1019	Lilleshall Grange Abby Road Lilleshall	B8		600	0.00
W2010/0375	Unit D7, Court Works Industrial Estate Bridgnorth Road Tweedale	B8	PDL	-112	0.01
W2010/0806	The Technical Centre Halesfield 7 Halesfield	B8	PDL	360	1.01
W2011/0042	Unit B2, B3 & B4 Halesfield 8 Halesfield	B8	PDL	-665	0.35
W2012/0669	Maiden's Of Telford Deer Park Court Donnington Wood	B8	PDL	121	1.40

Application No	Address	Use Class	Previous Use	Sq M	Hectares
W2012/0683	Unit A7 Hortonwood 10 Hortonwood	B8	PDL	179	0.04
Use Class Net				318	
Use Class Gross				1275	
Borough Net Totals				16123	
Borough Gross Totals				22093	

Appendix 4b - Other Non-residential Completed Floorspace 2013/14

Application No	Address	Use Class	Previous Use	Sq M	Hectares
W2010/0011	Former Watkins Nursery Apley Castle Leegomery, Telford, Shropshire.	A1		-62	0.73
W2010/0019b	6 Gower Street, St Georges, Telford, TF2 9JR	A1		-196	0.00
W2010/0174	Sutton Hill Local Centre adjacent to former Red Admiral public house, Sir Alexander Fleming School and Sutton Hill Co	A1		231	1.90
W2010/0189	7 Churchill Buildings Queens Street Wellington	A1		-220	
W2010/0793	40 High Street Dawley TF4 2EX	A1		-187	0.00
W2011/0201	Former Shropshire Lad, Malinslee Local Centre Brunel Road Malinslee	A1		350	0.00
W2013/0430	20 Station Road Ketley	A1		82	0.00
W2013/0461	1 The Square St Marys Street Newport TF10 7AG	A1		-50	0.00
W2013/0490	Small Wood Lodge Tearooms Upper Bar Newport TF10 7AP	A1		10	0.00
W2013/0503	Stafford Place 2 Church Street St Georges TF2 9JQ	A1		-74	0.00
W2013/0556	Unit 2,3 Lightmoor Way Lightmoor Village	A1		-88	0.00
W2013/0679	Harveys Unit 9 Colliers Way Old Park Telford	A1		388	0.15
W2014/0003	Retail Unit Gresham Drive Newdale TF3 5ES	A1		-802	0.00
W2014/0063	Crescent House, The Crescent, Church Aston, Newport, Shropshire, TF10 9LA	A1		10	0.00
W2006/0463	LAND TO THE NORTH OF, HOLYHEAD ROAD KETLEY Hadley	A1	PDL	3770	2.81
W2011/0489	60A & 60B Upper Bar Newport	A1	PDL	-116	0.03
W2011/0800	Lawley Square Newdale Valley Lawley	A1	PDL	213	0.36
W2011/0953	Gladstone House Hadley	A1	PDL	511	0.98
W2012/0324	Unit 15, Tweedale Court Tweedale Court Madeley	A1	PDL	65	0.01
W2012/0391	Unit 6 Telford Bridge Retail Park Old Park	A1	PDL	312	0.07
W2012/0498	Land off Parkway Madeley	A1	PDL	125	1.00
W2013/0102	Land off Parkway Madeley Court Madeley	A1	PDL	1419	0.62
W2013/0118	Inchcape Trench Road Donnington	A1	PDL	1090	0.51
Use Class Net				6779	
Use Class Gross				8575	
W2013/0742	10b Burton Street Dawley TF4 2ES	A2		-24	0.00

Application No	Address	Use Class	Previous Use	Sq M	Hectares
W2013/0792	9 new Street Oakengates	A2		-41	0.00
W2011/0800	Lawley Square Newdale Valley Lawley	A2	PDL	213	0.36
Use Class Net				148	
Use Class Gross				213	
W2010/0154	Plaza Two Telford Town Centre, Telford, Shropshire.	A3		160	
W2013/0358	Ellerdine Hall Farm Ellerdine TF6 6QR	A3		200	0.00
W2013/0550	Domino's Pizza (Bucks Head) Watling Street Wellington TF1 1NJ	A3		-491	0.00
W2013/0556	Unit 2,3 Lightmoor Way Lightmoor Village	A3		88	0.00
W2013/0792	9 new Street Oakengates	A3		41	0.00
W2013/0937	Kens Stacks Stafford Park 4	A3		-63	0.00
W2013/0937	Kens Stacks Stafford Park 4	A3		119	0.00
W2013/0981		A3		62	0.25
W2011/0800	Lawley Square Newdale Valley Lawley	A3	PDL	213	0.36
W2011/0953	Gladstone House Hadley	A3	PDL	140	0.98
W2012/0498	Land off Parkway Madeley	A3	PDL	260	1.00
W2012/0863	Carter Towers Hadley Park West Hadley	A3	PDL	34	0.01
Use Class Net				763	
Use Class Gross				1317	
W2010/0126	Lord Hill Inn Dawley, Telford, Shropshire.	A4		-250	
W2013/0966	Rose & Crown Public House Stirchley Road Stirchley Village	A4		-20	0.00
W2013/0271		A4	PDL	-193	0.00
Use Class Net				-463	
Use Class Gross				0	
W2010/0174	Sutton Hill Local Centre adjacent to former Red Admiral public house, Sir Alexander Fleming School and Sutton Hill Co	A5		80	1.90
W2010/0332	Huntsman Inn Wellington Road Little Wenlock	A5		-25	0.25
W2011/0201	Former Shropshire Lad, Malinslee Local Centre Brunel Road Malinslee	A5		71	0.00
W2013/0461	1 The Square St Marys Street Newport TF10 7AG	A5		50	0.00

Application No	Address	Use Class	Previous Use	Sq M	Hectares
W2013/0550	Domino's Pizza (Bucks Head) Watling Street Wellington TF1 1NJ	A5		491	0.00
W2011/0800	Lawley Square Newdale Valley Lawley	A5	PDL	213	0.36
W2011/0953	Gladstone House Hadley	A5	PDL	140	0.98
W2012/0498	Land off Parkway Madeley	A5	PDL	260	1.00
W2012/0863	Carter Towers Hadley Park West Hadley	A5	PDL	34	0.01
Use Class Net				1314	
Use Class Gross				1339	
W2010/0332	Huntsman Inn Wellington Road Little Wenlock	C1		65	0.25
W2010/0332	Huntsman Inn Wellington Road Little Wenlock	C1		25	0.25
W2009/0283	Lord Nelson Hotel 11 Park Street Wellington, Telford, Shropshire.	C1	PDL	400	0.11
Use Class Net				490	
Use Class Gross				490	
W2013/0510	Wellfield Cootage Glendale, Lawley Village TF4 2PL	C2		1000	0.16
Use Class Net				1000	
Use Class Gross				1000	
W2010/0019b	6 Gower Street, St Georges, Telford, TF2 9JR	D1		196	0.00
W2010/0168	Parish Hall Church Walk Wellington, Telford, Shropshire.	D1		115	
W2013/0534	Castle House School Chetwynd End TF10 7SE	D1		125	0.00
W2013/0535		D1		125	0.00
W2013/0844	Donnington Wood Infant School Baldwin Webb Avenue Donnington	D1		80	1.20
W2010/0811	Harper Adams University College Edgmond	D1	GR	1246	0.63
W2010/0806	The Technical Centre Halesfield 7 Halesfield	D1	PDL	-3300	1.01
W2011/0591	Dawley Regeneration Dawley	D1	PDL	10055	10.04
W2011/0800	Lawley Square Newdale Valley Lawley	D1	PDL	163	0.36
W2011/0953	Gladstone House Hadley	D1	PDL	245	0.98
W2012/0071	Donnington Health Centre Wrekin Drive Donnington	D1	PDL	939	0.45
W2012/0275	Oakengates United Church Stafford Road Oakengates	D1	PDL	40	0.08

Application No	Address	Use Class	Previous Use	Sq M	Hectares
W2012/0523	Hindu Cultural Resource Centre 20-22 Bank Road Dawley Bank	D1	PDL	8	0.13
W2012/0563	New College King Street Wellington	D1	PDL	837	0.10
W2012/0654	Muxton County Primary School Marshbrook Way Muxton	D1	PDL	352	1.16
W2012/0693	Harper Adams University College (Weston Building) Edgmond	D1	PDL	1470	0.41
W2012/0953	Priorslee Medical Practice Priorslee Avenue Priorslee	D1	PDL	59	0.01
W2013/0018	St Lawrence Church Church Lane Little Wenlock	D1	PDL	1	0.27
Use Class Net				12755	
Use Class Gross				16055	
W2010/0056	Oakengates Leisure Centre Wrockwardine Wood, Telford, Shropshire.	D2		2933	
W2010/0155	Unit 14 Hadley Park Road, Hadley, Telford, Shropshire.	D2		250	
W2010/0189	7 Churchill Buildings Queens Street Wellington	D2		220	
W2013/0676		D2		0	0.00
W2014/0003	Retail Unit Gresham Drive Newdale TF3 5ES	D2		802	0.00
W2014/0090	Suite 2 Jesson House Stafford Court Stafford Park TF3 3BD	D2		225	0.00
W2009/0442	13 Green Acres Farm Crudgington	D2	GR	0	1.06
W2012/0849	Telford Town Park Visitor Centre Telford Town Park, Hinkshay Road Telford Town Centre	D2	GR	0	0.32
W2013/0103	Telford Town Park Hinkshay Road Telford Town Centre	D2	GR	700	0.07
W2010/0375	Unit D7, Court Works Industrial Estate Bridgnorth Road Tweedale	D2	PDL	112	0.01
Use Class Net				5242	
Use Class Gross				5242	
W2013/1019	Lilleshall Grange Abby Road Lilleshall	NK		-1200	0.00
W2012/0672	Upper Coalmoor Farm Moreton Coppice Coalmoor	NK	PDL	-172	0.03
Use Class Net				-1372	
Use Class Gross				0	
W2010/0081	Harper Adams University College Edgmond Shropshire. TF10 8NB	Other		0	
Use Class Net				0	
Use Class Gross				0	

Application No	Address	Use Class	Previous Use	Sq M	Hectares
W2013/0275		SG		2178	0.00
W2013/0334	South Staffs Hire Ltd, Hortonwood 7, Hortonwood, Telford, Shropshire, TF1 7GP	SG		382	0.00
W2013/0350	Unit 10 Springfield Industrial Estate newport TF10 7NB	SG		-900	0.09
W2013/0350	Unit 10 Springfield Industrial Estate newport TF10 7NB	SG		900	0.09
W2013/0352	Unit 3 Mercian Works Holyhead Road Ketley TF1 5DY	SG		442	0.00
W2013/0352	Unit 3 Mercian Works Holyhead Road Ketley TF1 5DY	SG		-442	0.00
W2013/0430	20 Station Road Ketley	SG		-82	0.00
W2013/0694		SG		115	0.00
W2013/0732	58 high Street Newport TF10 7AQ	SG		225	0.00
W2013/0835		SG		180	0.00
W2013/0966	Rose & Crown Public House Stirchley Road Stirchley Village	SG		20	0.00
W2011/0042	Unit B2, B3 & B4 Halesfield 8 Halesfield	SG	PDL	665	0.35
W2012/0431	Plot 4 Halesfield 23 Halesfield	SG	PDL	140	0.52
W2012/0683	Unit A7 Hortonwood 10 Hortonwood	SG	PDL	-402	0.04
W2013/0022	Roden Nurseries Roden Lane Roden	SG	PDL	-1200	1.70
W2013/0118	Inchcape Trench Road Donnington	SG	PDL	-1090	0.51
W2013/0491	Unit 21 Hortonwood 33	SG	PDL	-998	0.00
Use Class Net				133	
Use Class Gross				5247	
Borough Net Totals				26788	
Borough Gross Totals				39476	

Appendix 4c - Town Centre Uses Completed Floorspace 2013/14

Application No	Address	Use Class	Previous Use	Sq M	Hectares
W2010/0011	Former Watkins Nursery Apley Castle Leegomery, Telford, Shropshire.	A1		-62	0.73
W2010/0019b	6 Gower Street, St Georges, Telford, TF2 9JR	A1		-196	0.00
W2010/0174	Sutton Hill Local Centre adjacent to former Red Admiral public house, Sir Alexander Fleming School and Sutton Hill Co	A1		231	1.90
W2010/0189	7 Churchill Buildings Queens Street Wellington	A1		-220	
W2010/0793	40 High Street Dawley TF4 2EX	A1		-187	0.00
W2011/0201	Former Shropshire Lad, Malinslee Local Centre Brunel Road Malinslee	A1		350	0.00
W2013/0430	20 Station Road Ketley	A1		82	0.00
W2013/0503	Stafford Place 2 Church Street St Georges TF2 9JQ	A1		-74	0.00
W2013/0556	Unit 2,3 Lightmoor Way Lightmoor Village	A1		-88	0.00
W2014/0003	Retail Unit Gresham Drive Newdale TF3 5ES	A1		-802	0.00
W2014/0063	Crescent House, The Crescent, Church Aston, Newport, Shropshire, TF10 9LA	A1		10	0.00
W2006/0463	LAND TO THE NORTH OF, HOLYHEAD ROAD KETLEY Hadley	A1	PDL	3770	2.81
W2011/0489	60A & 60B Upper Bar Newport	A1	PDL	-116	0.03
W2011/0800	Lawley Square Newdale Valley Lawley	A1	PDL	213	0.36
W2012/0324	Unit 15, Tweedale Court Tweedale Court Madeley	A1	PDL	65	0.01
W2012/0498	Land off Parkway Madeley	A1	PDL	125	1.00
W2013/0102	Land off Parkway Madeley Court Madeley	A1	PDL	1419	0.62
W2013/0118	Inchcape Trench Road Donnington	A1	PDL	1090	0.51
W2011/0800	Lawley Square Newdale Valley Lawley	A2	PDL	213	0.36
W2010/0126	Lord Hill Inn Dawley, Telford, Shropshire.	B1(a)		250	
W2010/0154	Plaza Two Telford Town Centre, Telford, Shropshire.	B1(a)		-160	
W2010/0551	2 Market Street Wellington TF1 1DT	B1(a)		-100	0.00
W2013/0334	South Staffs Hire Ltd, Hortonwood 7, Hortonwood, Telford, Shropshire, TF1 7GP	B1(a)		73	0.00
W2013/0428	26 Vineyard Road Wellington	B1(a)		-202	0.00
W2013/0670	Prospect House Unit 3 Halesfield 22 TF7 4QX	B1(a)		-168	0.00

Application No	Address	Use Class	Previous Use	Sq M	Hectares
W2013/0674	Lloyds Cottage The Lloyds Ironbridge TF8 7HH	B1(a)		700	0.09
W2012/0832	Site E Hortonwood 45 Hortonwood	B1(a)	GR	498	4.60
W2012/0922	Land off Hadley Road East Hadley	B1(a)	GR	730	0.42
W2010/0806	The Technical Centre Halesfield 7 Halesfield	B1(a)	PDL	200	1.01
W2011/0023	Hadley Castle Works Hadley	B1(a)	PDL	-469	12.60
W2011/0800	Lawley Square Newdale Valley Lawley	B1(a)	PDL	163	0.36
W2012/0431	Plot 4 Halesfield 23 Halesfield	B1(a)	PDL	80	0.52
W2012/0683	Unit A7 Hortonwood 10 Hortonwood	B1(a)	PDL	44	0.04
W2012/0863	Carter Towers Hadley Park West Hadley	B1(a)	PDL	-102	0.01
W2010/0056	Oakengates Leisure Centre Wrockwardine Wood, Telford, Shropshire.	D2		2933	
W2010/0155	Unit 14 Hadley Park Road, Hadley, Telford, Shropshire.	D2		250	
W2010/0189	7 Churchill Buildings Queens Street Wellington	D2		220	
W2013/0676		D2		0	0.00
W2014/0003	Retail Unit Gresham Drive Newdale TF3 5ES	D2		802	0.00
W2009/0442	13 Green Acres Farm Crudgington	D2	GR	0	1.06
W2013/0103	Telford Town Park Hinkshay Road Telford Town Centre	D2	GR	700	0.07
W2010/0375	Unit D7, Court Works Industrial Estate Bridgnorth Road Tweedale	D2	PDL	112	0.01
Area Net				12374	
Area Gross				15321	
Dawley					
W2013/0742	10b Burton Street Dawley TF4 2ES	A2		-24	0.00
Area Net				-24	
Area Gross				0	
Hadley					
W2011/0953	Gladstone House Hadley	A1	PDL	511	0.98
Area Net				511	
Area Gross				511	

Application No	Address	Use Class	Previous Use	Sq M	Hectares
Newport					
W2013/0461	1 The Square St Marys Street Newport TF10 7AG	A1		-50	0.00
W2013/0490	Small Wood Lodge Tearooms Upper Bar Newport TF10 7AP	A1		10	0.00
W2013/0732	58 high Street Newport TF10 7AQ	B1(a)		-225	0.00
Area Net				-265	
Area Gross				10	
Oakengates					
W2013/0792	9 new Street Oakengates	A2		-41	0.00
Area Net				-41	
Area Gross				0	
Town Centre					
W2013/0679	Harveys Unit 9 Colliers Way Old Park Telford	A1		388	0.15
W2012/0391	Unit 6 Telford Bridge Retail Park Old Park	A1	PDL	312	0.07
W2014/0090	Suite 2 Jesson House Stafford Court Stafford Park TF3 3BD	B1(a)		-225	0.00
W2014/0090	Suite 2 Jesson House Stafford Court Stafford Park TF3 3BD	D2		225	0.00
W2012/0849	Telford Town Park Visitor Centre Telford Town Park, Hinkshay Road Telford Town Centre	D2	GR	0	0.32
Area Net				700	
Area Gross				925	
Borough Net Totals				13255	
Borough Gross Totals				16767	

Appendix 5 - Non-residential Under Construction 2013/14

Year	Application No	Address	Change	Use Class	Hectares	Sq M
2014	W2010/0053	27 High Street Hadley	CU	A1	0.05	-10.5
2014	W2010/0053	27 High Street Hadley	CU	C3	0.05	10.5
2014	W2011/0878	Faccenda Factory Hortonwood 60 Hortonwood	EXT	B2	4.88	13489
Ward Totals					4.98	13489
Brookside						
2014	W2012/0778	Land off, Beaconsfield/Burford Brookside TF3 1NT	DEM	D2	2.20	-662
2014	W2012/0866	Land off Burford Brookside	NEW	A1	0.17	534.4
2014	W2012/0866	Land off Burford Brookside	NEW	A5	0.17	86.4
Ward Totals					2.54	-41.2
College						
2014	W2007/0667	Telford Islamic Centre, 88 King Street Wellington	CU	D1	0.23	2440
2014	W2007/0667	Telford Islamic Centre, 88 King Street Wellington	CU	D2	0.23	-2440
2014	W2013/0025	Telford College of Arts & Technology Haybridge Road Wellington	EXT	D1	0.14	50
2014	W2013/0696	TCAT Wellington	NEW	D1	0.00	1693
Ward Totals					0.60	1743
Donnington						
2014	W2014/0045	Pergo House Barclay Gardens Donnington TF2 8AB	CU	A1	0.00	134
2014	W2014/0045	Pergo House Barclay Gardens Donnington TF2 8AB	CU	B1(a)	0.00	-134
Ward Totals					0.00	0
Edgmond						
2014	W2013/0658	Harper Adams University College Edgmond	DEM	Other	0.00	-1204
Ward Totals					0.00	-1204

CU - Change of Use EXT - Extension DEM - Demolition REP - Replacement Building MOB - Mobile Unit

Year	Application No	Address	Change	Use Class	Hectares	Sq M
Ercall Magna						
2014	W2013/0022	Roden Nurseries Roden Lane Roden	CU	B8	1.70	1200
Ward Totals					1.70	1200
Hadley and Leegomery						
2014	W2011/0474	40 Castle Street Hadley	CU	A5	0.09	166
2014	W2011/0953	Gladstone House Hadley	NEW	A2	0.98	140
2014	W2012/0165	Land off Hadley Park Roundabout Hadley Park	NEW	A4	0.58	283
2014	W2012/0583	Blockleys Bricks Ltd Sommerfeld Road Hadley	REP	B1(a)	4.35	89.7
2014	W2012/0583	Blockleys Bricks Ltd Sommerfeld Road Hadley	DEM	B1(a)	4.35	-89.7
2014	W2013/0720	Land Off Sommerfield Road (Former Blockleys Brick site) Trech Lock TF1 5RY	DEM	B1(a)	6.29	-155
2014	W2013/0720	Land Off Sommerfield Road (Former Blockleys Brick site) Trech Lock TF1 5RY	DEM	B2	6.29	-11963
Ward Totals					22.93	-11529
Haygate						
2014	W2013/0944	54 The Pheasant Inn Market Street Wellington TF1 1DT	CU	A4	0.16	-200
2014	W2013/0944	54 The Pheasant Inn Market Street Wellington TF1 1DT	CU	B2	0.16	200
2014	W2013/1041	The Pheasant Inn Market Street Wellington TF1 1DT	EXT	A3	0.00	4
Ward Totals					0.32	4
Horsehay and Lightmoor						
2014	W2012/0292	Horsehay Limited, Horsehay House Bridge Road Horsehay	CU	B1(a)	0.13	-540
Ward Totals					0.13	-540
Ketley and Oakengates						
2014	W2005/0906	WELLINGS LTD WASTE RECYCLING CENTRE, RO Ketley	NEW	Other	2.64	500
2014	W2012/1019	CO-OP Food Store Limes Walk Oakengates	CU	A1	0.10	508
2014	W2012/1019	CO-OP Food Store Limes Walk Oakengates	CU	A1	0.10	-973
2014	W2012/1019	CO-OP Food Store Limes Walk Oakengates	CU	A1	0.10	465
2014	W2013/0548	Library /Theatre Limes Walk Oakengates	CU	A3	0.27	0

CU - Change of Use EXT - Extension DEM - Demolition REP - Replacement Building MOB - Mobile Unit

Year	Application No	Address	Change	Use Class	Hectares	Sq M
2014	W2013/0771	Bluefin, Suite G01 Grosvenor House Hollinswood Road Snedshill TF2 9TW	CU	B1(a)	0.00	-68.8
2014	W2013/0771	Bluefin, Suite G01 Grosvenor House Hollinswood Road Snedshill TF2 9TW	CU	SG	0.00	68.8
2014	W2014/0016	Meadows Primary School & Nursery Riddings Close Ketley TF1 5HF	EXT	D1	0.00	514.7
Ward Totals					3.21	1014.7
Lawley and Overdale						
2014	W2012/0008	Southwater Telford Town Centre	NEW	A1	1.97	62
2014	W2012/0008	Southwater Telford Town Centre	NEW	A2	1.97	62
2014	W2012/0008	Southwater Telford Town Centre	DEM	A2	1.97	-55
2014	W2012/0008	Southwater Telford Town Centre	NEW	A3	1.97	1208
2014	W2012/0008	Southwater Telford Town Centre	NEW	A4	1.97	1208
2014	W2012/0008	Southwater Telford Town Centre	NEW	B1(a)	1.97	62
2014	W2012/0008	Southwater Telford Town Centre	NEW	C1	1.97	3084
2014	W2012/0008	Southwater Telford Town Centre	DEM	D1	1.97	-1174
2014	W2012/0008	Southwater Telford Town Centre	NEW	D2	1.97	4937
Ward Totals					17.73	9394
Malinslee						
2014	W2010/0564	Southwater Regeneration Telford Town Centre	NEW	A1	0.73	156.25
2014	W2010/0564	Southwater Regeneration Telford Town Centre	NEW	A2	0.73	156.25
2014	W2010/0564	Southwater Regeneration Telford Town Centre	NEW	A3	0.73	156.25
2014	W2010/0564	Southwater Regeneration Telford Town Centre	NEW	A4	0.73	156.25
2014	W2010/0564	Southwater Regeneration Telford Town Centre	NEW	B1(a)	0.73	7739
2014	W2012/0472	Southwater Square Southwater Way Telford Town Centre	NEW	A3	2.01	312.5
2014	W2012/0472	Southwater Square Southwater Way Telford Town Centre	NEW	A4	2.01	312.5
2014	W2012/0472	Southwater Square Southwater Way Telford Town Centre	NEW	D1	2.01	3910
Ward Totals					9.68	12899

CU - Change of Use EXT - Extension DEM - Demolition REP - Replacement Building MOB - Mobile Unit

Year	Application No	Address	Change	Use Class	Hectares	Sq M
Muxton						
2014	W2010/0002	Land at Lodgewood Farm Redhill Way Telford TF2 9PD	CU	B1(a)	0.72	0
Ward Totals					0.72	0
Newport South						
2014	W2013/0832	Burton Borough School Audley Avenue Newport Tf10 7PS	EXT	D1	0.00	3900
2014	W2013/0832	Burton Borough School Audley Avenue Newport Tf10 7PS	DEM	D1	0.00	-2940
2014	W92/0970	Newport Silo Audley Avenue Newport	REP	B8	2.91	1340
Ward Totals					2.91	2300
Newport West						
2014	W2013/0847	Adams Grammer School High Street Newport TF10 7BD	EXT	D1	0.00	517
2014	W2013/0847	Adams Grammer School High Street Newport TF10 7BD	DEM	D1	0.00	-85.6
Ward Totals					0.00	431.4
Priorslee						
2014	W2013/0423	Land Off Castle Farm Way Priorslee	NEW	D1	16.80	0
2014	W2013/0774	Land off Teece Drive Priorsee	NEW	D1	8.64	7944
Ward Totals					25.44	7944
The Nedge						
2014	W2009/0326	Randlay Centre Randlay Community Centre Randlay, Telford, Shropshire.	DEM	D2	0.92	-403
2014	W2013/0661	Lord Silkin School Stirchley	REP	D1	0.00	9611
2014	W2013/0661	Lord Silkin School Stirchley	DEM	D1	0.00	-9746
2014	W2013/0933		EXT	B2	0.00	106
Ward Totals					0.92	-432
Wrockwardine						
2014	W2012/0672	Upper Coalmoor Farm Moreton Coppice Coalmoor	REP	B1(a)	0.03	379
Ward Totals					0.03	379

CU - Change of Use EXT - Extension DEM - Demolition REP - Replacement Building MOB - Mobile Unit

Year	Application No	Address	Change	Use Class	Hectares	Sq M
Wrockwardine Wood and Trench						
2014	W2013/0462	Craemer House Hortonwood 1	EXT	B1(a)	3.67	997
2014	W2013/0462	Craemer House Hortonwood 1	EXT	B2	3.67	5409.21
2014	W2013/0462	Craemer House Hortonwood 1	NEW	B8	3.67	1218.3
2014	W2013/0613		REP	D2	0.00	0
2014	W2013/0676		NEW	D1	0.00	8550
2014	W2013/0882	TJ Vickers Trench Road Trench TF2 6PL	DEM	B2	0.00	-31
2014	W2013/0882	TJ Vickers Trench Road Trench TF2 6PL	EXT	B2	0.00	506
Ward Totals					11.01	16649.51
Borough Totals					104.85	53701.41

CU - Change of Use EXT - Extension DEM - Demolition REP - Replacement Building MOB - Mobile Unit

Appendix 6a - Employment Land New Build Not Started 2013/14

Year	Application No	Address	Use Class	Hectares	Sq M
2014	SA1	Telford Shopping Centre	B1(a)	0.00	18000
2014	SA6	Central Old Park Caledonian Way	B1(a)	1.14	3600
2014	SA7	Central Park Telford	B1(a)	14.62	35000
2014	SA8	Telford Way Telford Town Centre	B1(a)	3.13	15800
Ward Totals				18.89	72400
Church Aston and Lilleshall					
2014	WLPa	AUDLEY AVENUE IND ESTATE AUDLEY AVENUE	B2	3.05	30500
Ward Totals				3.05	30500
Cuckoo Oak					
2014	T77/0007c	HALESFIELD 9 HALESFIELD	B2	0.36	4940
2014	T77/101m	HALESFIELD NORTH HALESFIELD	B2	0.64	6682
2014	T77/101n	HALESFIELD NORTH HALESFIELD	B2	0.74	7035
2014	T86/0007a	EP 7 (1) HALESFIELD N HALESFIELD	B2	2.03	5000
2014	T86/0007b	EP 7 (1) HALESFIELD 19 HALESFIELD	B2	3.80	3800
2014	T91/0238	LAND OFF BRIDGNORTH ROAD CUCKOO OAK	B2	1.65	16450
2014	WLPb	LP ALLOCATION (RFT) HALESFIELD	B8	4.39	43910
Ward Totals				13.61	87817
Donnington					
2014	T77/101c	EP 7 (1) HORTONWOOD N HORTONWOOD	B8	3.83	38270
2014	W2014/0054	MOD Donnington B8 site Corner of Hortonwood Roundabout Corner of Hortonwood Roundabout	B1(a)	7.84	232
2014	W2014/0054	MOD Donnington B8 site Corner of Hortonwood Roundabout Corner of Hortonwood Roundabout	B8	7.84	2600

Year	Application No	Address	Use Class	Hectares	Sq M
Ward Totals				19.51	41102
Edgmond					
2014	W2013/0658	Harper Adams University College Edgmond	B1(b)	0.00	1858
Ward Totals				0.00	1858
Ercall Magna					
2014	T91/0103	SHAWBIRCH CAMPUS SITE - AMENDMENT 2	B1(a)	22.29	222900
Ward Totals				22.29	222900
Hadley and Leegomery					
2014	T77/101b	EP 7 (1) HORTONWOOD N HORTONWOOD	B2	3.82	7035
2014	T77/101d	EP 7 (1) HORTONWOOD N HORTONWOOD	B8	2.82	12926
2014	T87/207b	HADLEY PARK A HADLEY	B1(a)	0.53	5261
2014	T87/207d	LAND OFF QUEENSWAY HADLEY CAMPUS	B1(a)	1.82	18200
2014	T88/0234b	HORTONWOOD NE HORTONWOOD	B8	0.70	6973
2014	T88/0234c	HORTONWOOD N HORTONWOOD	B1(a)	2.70	26660
2014	T88/0234f	EP 7 (1) HORTONWOOD N HORTONWOOD N	B8	5.51	55120
2014	T88/0234g	HORTONWOOD N HORTONWOOD	B8	6.99	69100
2014	T88/0234h	HORTONWOOD N HORTONWOOD	B8	7.13	2422
2014	T88/0234i	HORTONWOOD N HORTONWOOD	B1(a)	10.22	102200
2014	T90/0025	HADLEY CASTLE WEST HADLEY	B8	9.71	73470
2014	W2011/0023	Hadley Castle Works	B1(a)	12.60	3355
Ward Totals				64.54	382722
Horsehay and Lightmoor					
2014	C2001/0005	Land to rear of, Myford Horsehay	B2	7.34	7787
2014	T91/0243	LIGHTMOOR SOUTHWEST TELFORD	B2	2.86	28580

Year	Application No	Address	Use Class	Hectares	Sq M
Ward Totals				10.20	36367
Lawley and Overdale					
2014	T77/0001a	COURT SERVICE CAR PARK TOWN CENTRE	B1(a)	0.32	3170
2014	T77/0001b	HALL CAR PARK TOWN CENTRE	B1(a)	1.18	11840
2014	T80/0033	EP 7 (1) RAMPART WAY TOWN CENTRE	B1(a)	2.41	24000
2014	T80/033	LAND AT EUSTON WAY TOWN CENTRE	B2	0.30	2992
Ward Totals				4.21	42002
Muxton					
2014	T86/0221a	DONNINGTON GRANVILLE ROAD DONNINGTON	B8	1.24	12430
2014	T86/0221b	DONN BUS PARK 2 DONNINGTON	B8	3.26	32600
2014	T86/0221c	LAND SOUTH OF GRANVILLE ROAD DONNINGTON	B1(a)	3.29	24063
2014	T86/0221d	LAND NORTH OF GRANVILLE ROAD DONNINGTON	B8	15.71	157100
Ward Totals				23.51	226193
The Nedge					
2014	T85/0214a	TELFORD SC & TECH PK NEDGE HILL EAST	B2	2.93	148900
2014	T85/0214b	TELFORD SC & TECH PK NEDGE HILL W (MITAC)	B2	6.54	24271
2014	T85/0214c	TELFORD SC & TECH PK NEDGE HILL WEST (PT)	B2	14.89	63630
2014	W2013/0923	The Lighting Industry Association Stafford Park 7	B1(b)	0.00	1255.2
Ward Totals				24.36	238056.2
Wrockwardine Wood and Trench					
2014	W2010/0090	Vogel & Noot Products Ltd	B1(c)		0
Ward Totals					0
Borough Totals				204.15	1381917.2

Appendix 6b - Other Employment Land Not Started 2013/14

Year	Application No	Address	Change	Use Class	Hectares	Sq M
2014	W2011/0577	The Old Printing Works Bath Road Ironbridge	DEM	B2	0.17	-108
2014	W2011/0853	Parklands House Audley Avenue Newport	DEM	B1(a)	1.37	-279
2014	W2011/0853	Parklands House Audley Avenue Newport	DEM	B1(c)	1.37	-650
2014	W2011/0853	Parklands House Audley Avenue Newport	REP	B1(c)	1.37	2931
2014	W2012/0170	Agropharm Ltd, B5061 Overlay Hill Overlay	EXT	B2	2.83	157.6
2014	W2012/0191	1 Furnace Lane Trench	CU	B1(a)	0.04	-44
2014	W2012/0355	W Davies & Sons Mill Lane Kynnersley	DEM	B2	0.25	-280
2014	W2012/0916	Land adjacent 17 Water Lane Newport	DEM	B8	0.24	-683
Ward Totals					7.64	1044.6
Apley Castle						
2014	W2011/0374	Wappenshall Wharf Wappenshall	CU	B8	0.37	-479.5
2014	W2013/0498	6-17 Staff Residence, Princess Royal Hospital, Grainger Drive, Apley, Telford, Shropshire,	CU	B1(a)	0.00	840
Ward Totals					0.37	360.5
Arleston						
2014	W2012/0752	Wylie and Holland Motor Cycles 146 Watling Street Wellington	DEM	B1(a)	0.48	-98
2014	W2012/0752	Wylie and Holland Motor Cycles 146 Watling Street Wellington	DEM	B1(c)	0.48	-195
2014	W2012/0752	Wylie and Holland Motor Cycles 146 Watling Street Wellington	REP	B8	0.48	866
2014	W2013/0636	Communication House Watling Street Wellinton TF1 2HN	CU	B1(a)	0.03	-170
2014	W2014/0030	Church House New Church Road Wellington	CU	B1(a)	0.00	-139.55
Ward Totals					1.47	263.45
Brookside						
2014	W2012/0778	Land off, Beaconsfield/Burford Brookside TF3 1NT	REP	B1(a)	2.20	80
2014	W2012/0778	Land off, Beaconsfield/Burford Brookside TF3 1NT	DEM	B1(a)	2.20	-69

CU - Change of Use EXT - Extension DEM - Demolition REP - Replacement Building MOB - Mobile Unit

Year	Application No	Address	Change	Use Class	Hectares	Sq M
Ward Totals					4.40	11
Cuckoo Oak						
2014	W2012/0768	Unit 10 Halesfield 9 Halesfield	CU	B2	0.18	-1800
2014	W2013/0472	Tweedale Ambulance Station Cuckoo Oak Green, Bridgnorth Road Madeley TF6 4JD	CU	B8	0.00	284
2014	W2013/0851	WinTech Engineering Halesfield 2 TF7 4QM	EXT	B1(b)	0.00	125
Ward Totals					0.18	-1391
Dawley Magna						
2014	W2012/0201	Units 36-37, Heath Hill Industrial Estate Heath Hill Dawley	CU	B2	0.01	-116
2014	W2013/0017	Unit 5, Holland Court High Street Dawley	CU	B1(a)	0.01	-46
Ward Totals					0.02	-162
Edgmond						
2014	W2013/0398	The workshop High Street Edgmond TF10 8JW	DEM	B2	0.00	-30
Ward Totals					0.00	-30
Ercall Magna						
2014	W2012/0323	Riverside Stars Lane Cold Hatton Heath	EXT	B1(a)	0.17	82
2014	W2012/0323	Riverside Stars Lane Cold Hatton Heath	CU	B1(a)	0.17	69
2014	W2012/0323	Riverside Stars Lane Cold Hatton Heath	CU	B1(c)	0.17	-69
Ward Totals					0.51	82
Hadley and Leegomery						
2014	W2011/0456	Unit 10 Trench Lock 2 Trench Lock	CU	B1(c)	1.76	-50
2014	W2012/0443	Bohle UK Ltd Hortonwood 30 Hortonwood	EXT	B8	0.51	1000
Ward Totals					2.27	950
Haygate						
2014	W2012/0118	The Glebe Centre Glebe Street Wellington	CU	B1(a)	0.00	-1685
2014	W2012/0118	The Glebe Centre Glebe Street Wellington	CU	B1(a)	0.00	467

CU - Change of Use EXT - Extension DEM - Demolition REP - Replacement Building MOB - Mobile Unit

Year	Application No	Address	Change	Use Class	Hectares	Sq M
2014	W2012/0940	Edgbaston House Walker Street Wellington	CU	B1(a)	0.04	-345
Ward Totals					0.04	-1563
Ironbridge Gorge						
2014	W2013/0483	Merrythought Ltd, Merrythought Village Dale End Coalbrookdale TF8 7NJ	CU	B1(a)	0.00	558
2014	W2013/0483	Merrythought Ltd, Merrythought Village Dale End Coalbrookdale TF8 7NJ	CU	B8	0.00	-558
2014	W2013/0484	Merrythought Ltd, Merrythought Village Dale End Coalbrookdale TF8 7NJ	DEM	B1(a)	0.00	-160
2014	W2013/0675	Former Dale End Garage Dale End Coalbrookdale	DEM	B1(c)	0.08	-812
2014	W2013/0800	38 High Street Coalport TF8 7HT	CU	B1(c)	0.00	76.8
2014	W2013/0800	38 High Street Coalport TF8 7HT	CU	B8	0.00	-76.8
Ward Totals					0.08	-972
Ketley and Oakengates						
2014	W2009/0445	Unit 17 Ketley Business Park Waterloo Road, Ketley, Telford, Shropshire.	CU	B1(c)	0.01	-93
2014	W2011/0259	Unit 6 Trench Lock 3 Trench Lock	CU	B1(c)	0.01	-134.5
2014	W2013/0585	Autoscan QA Ltd, Autoscan House, Charlton Street Oakengates TF2 6BT	CU	B1(a)	0.00	-449.4
Ward Totals					0.02	-676.9
Lawley and Overdale						
2014	W2012/0059	Land at Brodie House Central Square Telford Town Centre	DEM	B1(a)	0.75	-600
2014	W2012/0777	Darby House Lawn Central Telford Town Centre	EXT	B1(a)	1.35	11
2014	W2014/0083	Unit 12, Telford Forge Retail Park, Colliers Way, Old Park, Telford, Shropshire, TF3 4AG	CU	B8	0.00	5675
Ward Totals					2.10	5086
Madeley						
2014	W2005/1289	UNITS A1/A2 COURT WORKS INDUSTRIAL EST TWEEDALE	REP	B2	0.17	460
2014	W2013/0469	Upper House Madeley 16 Church Street Madeley TF7 5BW	CU	B1(a)	0.00	-175
Ward Totals					0.17	285
Muxton						

CU - Change of Use EXT - Extension DEM - Demolition REP - Replacement Building MOB - Mobile Unit

Year	Application No	Address	Change	Use Class	Hectares	Sq M
2014	W2012/0658	The Old Granary, Craft Way Wellington Road Muxton	CU	B1(a)	0.00	138
2014	W2012/0939	Granville Site Offices Redhill	EXT	B1(a)	0.06	81
Ward Totals					0.06	219
Newport South						
2014	W2009/0312	Parkland House & Classic Furniture Audley Avenue Newport	REP	B1(c)	2.92	2931
2014	W2009/0312	Parkland House & Classic Furniture Audley Avenue Newport	REP	B2	2.92	2931
2014	W92/0970	Newport Silo Audley Avenue Newport	DEM	B8	2.91	-1340
Ward Totals					8.76	4522
Newport West						
2014	W2010/0019a	Advertiser Printing Works, Bellmans Yard, High Street Newport, Shropshire.	CU	B1(c)	0.09	-100
2014	W2012/1014	6 Midgley Court High Street Newport	CU	B1(a)	0.02	-177
Ward Totals					0.11	-277
The Nedge						
2014	W2008/1319	Unit G Stafford Park 15 Stafford Park	DEM	B2	0.71	-2958
2014	W2008/1319	Unit G Stafford Park 15 Stafford Park	CU	B2	0.71	-1790
2014	W2008/1319	Unit G Stafford Park 15 Stafford Park	CU	B2	0.71	1790
2014	W2009/0225	Land at Stafford Park 7 Stafford Park	EXT	B8	0.26	1280
2014	W2009/0439	Magna House Stafford Park 9 Stafford Park, Telford, Shropshire.	EXT	B2	2.56	145
2014	W2010/0626	Kendall Holdings Ltd Stafford Park 6 Stafford Park	REP	B1(a)	2.00	1100
2014	W2010/0626	Kendall Holdings Ltd Stafford Park 6 Stafford Park	DEM	B1(a)	2.00	-280
2014	W2012/0094	Ace House Stafford Park 6 Stafford Park	CU	B2	0.60	2436
2014	W2012/0094	Ace House Stafford Park 6 Stafford Park	CU	B8	0.60	-2436
2014	W2013/0161	Unit C2 Stafford Park 4 Stafford Park	CU	B8	0.30	459.8
2014	W2013/0838	Unit 5 Stafford Park 12	CU	B8	0.00	-1021
Ward Totals					10.46	-1274.2
Wrockwardine						

CU - Change of Use EXT - Extension DEM - Demolition REP - Replacement Building MOB - Mobile Unit

Year	Application No	Address	Change	Use Class	Hectares	Sq M
2014	W2011/0026	Berwick House The Farm Long Lane	CU	B8	24.60	24.6
2014	W2013/0530	AR Manley & Sons Somerwood Rodington SY4 4RF	EXT	B1(c)	0.00	25.89
Ward Totals					24.60	50.49
Wrockwardine Wood and Trench						
2014	W2012/0581	Unit D3 Hortonwood 10 Hortonwood	CU	B8	0.04	-370
2014	W2013/0095	Euro Films Ltd, Units B1 & B2 Hortonwood 7 Hortonwood	EXT	B2	0.14	0
Ward Totals					0.18	-370
Borough Totals					63.44	6157.94

CU - Change of Use EXT - Extension DEM - Demolition REP - Replacement Building MOB - Mobile Unit

Appendix 6c - Other Non-residential Land Not Started 2013/14

Year	Application No	Address	Change	Use Class	Hectares	Sq M
2014	SA1	Telford Shopping Centre Telford Town Centre	NEW	A1	0.00	50000
2014	W2010/0558	Stone House Shifnal Road Priorslee	EXT	C1	0.15	82
2014	W2011/0157	Gower Street Youth Club Gower Street St Georges	CU	D1	0.50	-400
2014	W2011/0170	The White Horse Inn Heath Hill Dawley	DEM	A4	0.26	-81
2014	W2011/0853	Parklands House Audley Avenue Newport	REP	SG	1.37	413
2014	W2011/0936	Former Tank Depot Haybrook, Halesfield 9 Halesfield	NEW	SG	0.24	300
2014	W2012/0191	1 Furnace Lane Trench	CU	C3	0.04	44
2014	W2012/0385	Unit 3 125 King Street Wellington	CU	A1	0.04	238
2014	W2012/0385	Unit 3 125 King Street Wellington	CU	SG	0.04	-238
Ward Totals					2.64	50358
Apley Castle						
2014	W2011/0374	Wappenshall Wharf Wappenshall	CU	D1	0.37	479.5
2014	W2013/0498	6-17 Staff Residence, Princess Royal Hospital, Grainger Drive, Apley, Telford, Shropshire,	CU	C2	0.00	-840
Ward Totals					0.37	-360.5
Arleston						
2014	W2012/0752	Wylie and Holland Motor Cycles 146 Watling Street Wellington	DEM	A1	0.48	-12
2014	W2013/0581	Land at Wrekin Retail Park Whitchurch Drive Arleston TF1 2DE	NEW	A1	0.00	116
2014	W2013/0581	Land at Wrekin Retail Park Whitchurch Drive Arleston TF1 2DE	NEW	A3	0.00	149
2014	W2013/0636	Communitication House Watling Street Wellinton TF1 2HN	CU	A5	0.03	170
2014	W2014/0030	Church House New Church Road Wellington	CU	A1	0.00	42
2014	W2014/0030	Church House New Church Road Wellington	CU	C3	0.00	97.55
Ward Totals					0.51	562.55

CU - Change of Use EXT - Extension DEM - Demolition REP - Replacement Building MOB - Mobile Unit

Year	Application No	Address	Change	Use Class	Hectares	Sq M
Brookside						
2014	W2012/0778	Land off, Beaconsfield/Burford Brookside TF3 1NT	REP	A1	2.20	534
2014	W2012/0778	Land off, Beaconsfield/Burford Brookside TF3 1NT	DEM	A1	2.20	-500
2014	W2012/0778	Land off, Beaconsfield/Burford Brookside TF3 1NT	REP	A5	2.20	87
2014	W2012/0778	Land off, Beaconsfield/Burford Brookside TF3 1NT	DEM	A5	2.20	-130
2014	W2012/0778	Land off, Beaconsfield/Burford Brookside TF3 1NT	REP	D2	2.20	353
Ward Totals					11.00	344
Church Aston and Lilleshall						
2014	W2010/0012	Woodcote Hall Wood cote Newport Shropshire TF10 9BW	EXT	C2	2.79	0
2014	W2010/0050	Mere Park Garden Centre Stafford Road Newport	CU	A1	0.00	0
2014	W2012/0859	Land off A41/A518 Roundabout Newport	NEW	A3	2.90	150.5
2014	W2012/0859	Land off A41/A518 Roundabout Newport	NEW	C1	2.90	1242
2014	W2012/0859	Land off A41/A518 Roundabout Newport	NEW	SG	2.90	430.6
2014	W2014/0020	Lilleshall Grange Abbey Road Lilleshall TF10 9HL	CU	B3-B7	0.00	-1000
2014	W2014/0020	Lilleshall Grange Abbey Road Lilleshall TF10 9HL	CU	SG	0.00	1000
Ward Totals					11.49	1823.1
College						
2014	W2013/0306	27-31 High Street Wellington TF1 1JW	DEM	A1	0.00	-2250
2014	W2013/0306	27-31 High Street Wellington TF1 1JW	NEW	C3	0.00	0
2014	W2013/0668	Former Service Station Kings Street Wellington	MOB	SG	0.00	50
2014	W2013/0877	the Old Hall School Stanley Road Wellington TF1 3BL	NEW	D1	0.00	453
2014	W2013/0994	8 Church Street Wellington TF1 1DG	CU	A2	0.00	-142.8
2014	W2013/0994	8 Church Street Wellington TF1 1DG	CU	C3	0.00	142.8
Ward Totals					0.00	-1747
Cuckoo Oak						
2014	W2012/0768	Unit 10 Halesfield 9 Halesfield	CU	D2	0.18	1800

CU - Change of Use EXT - Extension DEM - Demolition REP - Replacement Building MOB - Mobile Unit

Year	Application No	Address	Change	Use Class	Hectares	Sq M
2014	W2013/0331	Western Power Distribution Ltd Epic Park Halesfield 6	NEW	SG	0.00	15
2014	W2013/0472	Tweedale Ambulance Station Cuckoo Oak Green, Bridgnorth Road Madeley TF6 4JD	CU	A1	0.00	89
2014	W2013/0472	Tweedale Ambulance Station Cuckoo Oak Green, Bridgnorth Road Madeley TF6 4JD	CU	SG	0.00	-373
2014	W2013/0609	Telford Hotel & Golf Resort Great Hay Drive Sutton Hill TF7 4DT	NEW	C1	0.00	1750
Ward Totals					0.18	3281
Dawley Magna						
2014	W2010/0235	The Lord Hill Inn High Street Dawley TF4 2EX	CU	A4	0.01	-122.01
2014	W2012/0201	Units 36-37, Heath Hill Industrial Estate Heath Hill Dawley	CU	D2	0.01	116
2014	W2012/0867	40 High Street Dawley	CU	A1	0.01	-13.5
2014	W2012/0867	40 High Street Dawley	CU	C3	0.01	13.5
2014	W2013/0017	Unit 5, Holland Court High Street Dawley	CU	C3	0.01	46
2014	W2013/0569	38 High Street Dawley Telford	CU	A2	0.00	-142
2014	W2013/0569	38 High Street Dawley Telford	CU	A5	0.00	142
Ward Totals					0.05	39.99
Donnington						
2014	W2010/0509	ASDA ST. GEORGES ROAD Donnington	NEW	A1	3.56	0
2014	W2011/0803	72, 72B Furnace Lane Trench	DEM	A1	0.03	-22
2014	W2011/0803	72, 72B Furnace Lane Trench	REP	A1	0.03	65
Ward Totals					3.62	43
Dothill						
2014	W2013/0823	Blessed Robert Johnson college Whitchurch Road Wellington TF1 3DY	DEM	D1	0.00	-5970
2014	W2013/0823	Blessed Robert Johnson college Whitchurch Road Wellington TF1 3DY	NEW	D1	0.00	8270
Ward Totals					0.00	2300
Edgmond						
2014	W2009/0899	Bridge Farm Adeney Road Edgmond	CU	D1	0.01	210
2014	W2009/0899	Bridge Farm Adeney Road Edgmond	CU	Other	0.01	-210

CU - Change of Use EXT - Extension DEM - Demolition REP - Replacement Building MOB - Mobile Unit

Year	Application No	Address	Change	Use Class	Hectares	Sq M
2014	W2011/0190	Harper Adams University college Edgmond TF10 8NB	NEW	C2	0.00	922
2014	W2013/0625	Brook Farm Chetwynd Newport TF10 8BL	CU	Other	0.00	-103
2014	W2013/0708	The Lamb Inn 29 Shrewsbury Road Edgmond TF10 8HU	EXT	A3	0.00	84
Ward Totals					0.03	903
Ercall						
2014	W2012/0789	Red Lion Service Station Holyhead Road Wellington	EXT	A1	0.10	43
2014	W2013/0342	Birtley House 285 Holyhead Road Wellington TF1 2EW	CU	C1	0.00	0
2014	W2013/0938	Holyhead Road Wellington TF6 5AB	NEW	C2	0.00	6870
Ward Totals					0.10	6913
Ercall Magna						
2014	W2013/0541	Eton House Farm Eyton TF6 6EY	NEW	Other	0.00	96
Ward Totals					0.00	96
Hadley and Leegomery						
2014	W2011/0456	Unit 10 Trench Lock 2 Trench Lock	CU	SG	1.76	50
2014	W2012/0219	8 High Street Hadley	CU	D1	0.01	77
2014	W2012/0219	8 High Street Hadley	CU	SG	0.01	-77
2014	W2012/0640	Greenhous Group Ltd Trench Lock Hadley	NEW	SG	0.00	802
Ward Totals					1.78	852
Haygate						
2014	W2012/0118	The Glebe Centre Glebe Street Wellington	CU	A1	0.00	190
2014	W2012/0118	The Glebe Centre Glebe Street Wellington	CU	A2	0.00	467
2014	W2012/0118	The Glebe Centre Glebe Street Wellington	CU	A3	0.00	95
2014	W2012/0118	The Glebe Centre Glebe Street Wellington	CU	D1	0.00	467
Ward Totals					0.00	1219

CU - Change of Use EXT - Extension DEM - Demolition REP - Replacement Building MOB - Mobile Unit

Year	Application No	Address	Change	Use Class	Hectares	Sq M
Ironbridge Gorge						
2014	W2011/0239	15 Jockey Bank Ironbridge	CU	A4	0.06	-120.5
2014	W2011/0239	15 Jockey Bank Ironbridge	CU	C3	0.06	120.5
2014	W2013/0050	Tea Rooms 17 High Street Coalport	CU	A3	0.05	-56
2014	W2013/0050	Tea Rooms 17 High Street Coalport	CU	C1	0.05	56
Ward Totals					0.22	0
Ketley and Oakengates						
2014	W2006/0463	LAND TO THE NORTH OF, HOLYHEAD ROAD KETLEY Hadley	NEW	A1	2.81	130
2014	W2009/0445	Unit 17 Ketley Business Park Waterloo Road, Ketley, Telford, Shropshire.	CU	A3	0.01	93
2014	W2011/0259	Unit 6 Trench Lock 3 Trench Lock	CU	A1	0.01	134.5
2014	W2013/0291	45 Market Street Oakengates	CU	A1	0.00	-70
2014	W2013/0291	45 Market Street Oakengates	CU	A3	0.00	70
2014	W2013/0585	Autoscan QA Ltd, Autoscan House, Charlton Street Oakengates TF2 6BT	CU	SG	0.00	449.4
2014	W2013/0782	5-7 Limes Walk Oakengates	CU	A3	0.00	137.96
2014	W2013/0782	5-7 Limes Walk Oakengates	CU	D1	0.00	-137.96
Ward Totals					2.83	806.9
Lawley and Overdale						
2014	W2009/0314	Unit 4 & Unit 5 Hazeldine House Grange Central, Telford Town Centre, Telford, Shropshire.	CU	A2	0.02	-219
2014	W2009/0314	Unit 4 & Unit 5 Hazeldine House Grange Central, Telford Town Centre, Telford, Shropshire.	CU	Other	0.02	219
2014	W2010/0199	29 Sherwood Street Telford Town Centre, Telford, Shropshire.	CU	A3		0
2014	W2011/0151	Unit 12 Telford Forge Retail Park Old Park	MEZ	A1	0.11	199.5
2014	W2011/0168	Premier Inn Euston Way Telford Town Centre	EXT	C1	0.66	783
2014	W2012/0022	Ironstone Square Lawley	NEW	A3	0.49	315
2014	W2012/0022	Ironstone Square Lawley	NEW	C1	0.49	2513
2014	W2012/0059	Land at Brodie House Central Square Telford Town Centre	DEM	A1	0.75	-600
2014	W2012/0059	Land at Brodie House Central Square Telford Town Centre	NEW	A1	0.75	2212.25

CU - Change of Use EXT - Extension DEM - Demolition REP - Replacement Building MOB - Mobile Unit

Year	Application No	Address	Change	Use Class	Hectares	Sq M
2014	W2012/0059	Land at Brodie House Central Square Telford Town Centre	DEM	A2	0.75	-600
2014	W2012/0059	Land at Brodie House Central Square Telford Town Centre	NEW	A3	0.75	2212.25
2014	W2012/0059	Land at Brodie House Central Square Telford Town Centre	NEW	A4	0.75	2212.25
2014	W2012/0059	Land at Brodie House Central Square Telford Town Centre	NEW	A5	0.75	2212.25
2014	W2012/0059	Land at Brodie House Central Square Telford Town Centre	NEW	D2	0.75	7126
2014	W2013/0052	Lawley Medical Centre, Birchfield House Farriers Green Lawley Bank	EXT	D1	0.43	86
2014	W2013/0612	Land within Box Road and Central Southwater Telford Town Centre	REP	A1	10.76	17933.3
2014	W2013/0612	Land within Box Road and Central Southwater Telford Town Centre	DEM	A1	10.76	-107600
2014	W2013/0612	Land within Box Road and Central Southwater Telford Town Centre	REP	A3	10.76	17933.3
2014	W2013/0612	Land within Box Road and Central Southwater Telford Town Centre	REP	A4	10.76	17933.3
2014	W2013/0612	Land within Box Road and Central Southwater Telford Town Centre	REP	A5	10.76	17933.3
2014	W2013/0612	Land within Box Road and Central Southwater Telford Town Centre	REP	C1	10.76	17933.3
2014	W2013/0612	Land within Box Road and Central Southwater Telford Town Centre	REP	D2	10.76	17933.3
2014	W2013/0935	Unit 12 Telford Forge Retail Park, Colliers Way, Old Park, Telford, Shropshire, TF3 4AG	CU	A1	0.00	21809
2014	W2013/0935	Unit 12 Telford Forge Retail Park, Colliers Way, Old Park, Telford, Shropshire, TF3 4AG	CU	A1	0.00	5675
2014	W2014/0083	Unit 12, Telford Forge Retail Park, Colliers Way, Old Park, Telford, Shropshire, TF3 4AG	CU	A1	0.00	21809
2014	W2014/0084	Unit 12 Telford Forge Retail Park, Colliers Way, Old Park, Telford, Shropshire, TF3 4AG	MEZ	A1	0.00	790

Ward Totals

82.78 68754.3

Madeley

2014	W2012/0498	Land off Parkway Madeley	NEW	D1	1.00	1657.2
2014	W2012/0551	Land off, Parkway Madeley	NEW	A1	1.00	1400
2014	W2013/0124	Telford Ski Centre Court Road Madeley	EXT	D2	0.81	162
2014	W2013/0325	Lee Dingle, 48 Lees Farm Drive Madeley TF7 5SU	CU	C2	0.00	188
2014	W2013/0325	Lee Dingle, 48 Lees Farm Drive Madeley TF7 5SU	CU	C3	0.00	-188
2014	W2013/0355	Telford Ski Centre Court Road Madeley TF7 5DZ	EXT	D2	0.00	162

Ward Totals

2.81 3381.2

CU - Change of Use EXT - Extension DEM - Demolition REP - Replacement Building MOB - Mobile Unit

Year	Application No	Address	Change	Use Class	Hectares	Sq M
Muxton						
2014	W2012/0936	Shropshire Golf Centre and Driving Range Muxton Lane Muxton TF2 8PQ	EXT	A3	0.81	14
2014	W2012/0936	Shropshire Golf Centre and Driving Range Muxton Lane Muxton TF2 8PQ	EXT	C1	0.81	2048
2014	W2012/0936	Shropshire Golf Centre and Driving Range Muxton Lane Muxton TF2 8PQ	EXT	D2	0.81	958
2014	W2012/0936	Shropshire Golf Centre and Driving Range Muxton Lane Muxton TF2 8PQ	DEM	Other	0.81	-1517
Ward Totals					3.24	1503
Newport South						
2014	W2008/0934	Land adjacent to Newport, Shropshire.	NEW	C2	4.87	9196
2014	W2008/0934	Land adjacent to Newport, Shropshire.	NEW	C2	4.87	9196
2014	W2008/0934	Land adjacent to A41 Newport	NEW	C2	4.87	9196
2014	W2009/0312	Parkland House & Classic Furniture Audley Avenue Newport	REP	A1	2.92	3252
2014	W2009/0312	Parkland House & Classic Furniture Audley Avenue Newport	REP	Other	2.92	413
2014	W2012/0316	Audley Court Audley Avenue Newport TF10 7DR	EXT	D2	1.33	266
Ward Totals					21.79	31519
Newport West						
2014	W2010/0019a	Advertiser Printing Works, Bellmans Yard, High Street Newport, Shropshire.	CU	D2	0.09	100
2014	W2011/0354	23 High Street Newport	CU	A1	0.15	70
2014	W2011/0354	23 High Street Newport	CU	SG	0.15	-70
2014	W2012/1014	6 Midgley Court High Street Newport	CU	C3	0.02	0
2014	W2013/0482	Clarke Pharmaciats 75 Upper Bar Newport TF10 7AW	EXT	A1	0.00	30
2014	W2013/0482	Clarke Pharmaciats 75 Upper Bar Newport TF10 7AW	DEM	A1	0.00	-15
Ward Totals					0.41	115
Park						
2014	W2012/0603	The Priory Nursing Home Spring Hill Wellington	EXT	C2	0.44	237
2014	W2013/0645	St patricks School North Road Wellington TF1 3ER	REP	D1	0.00	114.3
2014	W2013/0645	St patricks School North Road Wellington TF1 3ER	DEM	D1	0.00	-159.1

CU - Change of Use EXT - Extension DEM - Demolition REP - Replacement Building MOB - Mobile Unit

Year	Application No	Address	Change	Use Class	Hectares	Sq M
Ward Totals					0.44	192.2
Priorslee						
2014	W2012/0713	Priorslee Primary Academy Priorslee Avenue Priorslee	EXT	D1	1.49	678
2014	W2014/0034	Stone House Shifnal Road Priorslee	EXT	C1	0.00	84.1
Ward Totals					1.49	762.1
St. Georges						
2014	W2013/0402	Wesley House 4 Station Hill St Georges TF2 9AA	CU	D1	0.00	554
2014	W2013/0402	Wesley House 4 Station Hill St Georges TF2 9AA	CU	SG	0.00	-554
Ward Totals					0.00	0
The Nedge						
2014	W2009/0326	Randlay Centre Randlay Community Centre Randlay, Telford, Shropshire.	NEW	C2	0.92	3159
2014	W2013/0161	Unit C2 Stafford Park 4 Stafford Park	CU	A1	0.30	-459.8
2014	W2013/0578	Single Source Stafford Park 6 TF3 3AT	NEW	NK	0.00	0
2014	W2013/0739	The Nedge Tavern Nazrd Lane Nedge Hill Telford TF3 1FE	CU	SG	0.00	0
2014	W2013/0808	Grange Park Primary School Calcott Stichley TF3 1YQ	DEM	D1	1.31	-2188
2014	W2013/0838	Unit 5 Stafford Park 12	CU	SG	0.00	1021
Ward Totals					2.53	1532.2
Wrockwardine						
2014	W2011/0026	Berwick House The Farm Long Lane	CU	Other	24.60	-24.6
2014	W2012/0912	Orchard Field The Mount Guest House Dawley Road, Lawley, Telford, Shropshire.	MOB	C1	0.19	3200
2014	W2013/0637	Land Adj to Carn Brea 34 Station Road Admaston TF5 0AW	CU	D1	0.00	-60
Ward Totals					24.79	3115.4
Wrockwardine Wood and Trench						
2014	W2010/0702	120 Trench Road Trench	CU	A1	0.02	-59
2014	W2010/0702	120 Trench Road Trench	CU	A5	0.02	59

CU - Change of Use EXT - Extension DEM - Demolition REP - Replacement Building MOB - Mobile Unit

Year	Application No	Address	Change	Use Class	Hectares	Sq M
2014	W2011/0264	Duke of York Trench Road Trench	EXT	A4	0.24	84
2014	W2011/0655	Land of the Former Youth Club Furnace Lane Trench	NEW	D1	0.23	312
2014	W2012/0581	Unit D3 Hortonwood 10 Hortonwood	CU	D1	0.04	370
Ward Totals					0.56	766
Borough Totals					175.64	179074.44

CU - Change of Use EXT - Extension DEM - Demolition REP - Replacement Building MOB - Mobile Unit